

1 **Detection of SARS-CoV-2 in saliva using tailed amplicon sequencing**

2 Aaron Garoutte¹, Tasha M. Santiago-Rodriguez¹, Heather L. Fehling², Rafal Iwasio^{3,*}

3 ¹Diversigen, Inc., Houston, TX, USA, 77046; ²Clinical Reference Laboratory, Inc. Lenexa, KS

4 66215; ³DNA Genotek, Inc., Ottawa, Ontario, CA, K2V 1C2

5

6 **ABSTRACT**

7 The most recent virus from the *Coronaviridae* family infecting humans, SARS-CoV-2, has
8 resulted in a global pandemic. As part of the surveillance efforts, SARS-CoV-2 genomes are
9 increasingly being made publicly available. Methods that include both short- and long-read
10 sequencing have been used to elucidate SARS-CoV-2 genomes; however, many of these
11 untargeted approaches may require deeper sequencing for greater genome coverage. For this
12 reason, sequence capture or amplicon-based approaches for SARS-CoV-2 genome sequencing
13 have been developed. The present study evaluated a modified sequence capture approach,
14 namely, tailed amplicon sequencing, to determine SARS-CoV-2 near complete genome
15 sequences from the saliva of infected individuals. Particularly, the suitability of saliva samples
16 stored at room temperature using OMNIgene®•ORAL OME-505 was evaluated. The tailed
17 amplicon sequencing approach poses the additional advantage of being a cost-effective method
18 for library preparation. Different known SARS-CoV-2 variants were identified across the
19 infected subjects, with an average of > 99.4% genome coverage. This methodology also enabled
20 robust genomic surveillance using phylogenetic analyses. The present study supports the
21 suitability of saliva stored at room temperature using collection devices for SARS-CoV-2 variant
22 detection. Importantly, the present study supports the use of tailed amplicon sequencing

23 approaches as an alternative, cost-effective method for SARS-CoV-2 detection in saliva for
24 genomic surveillance.

25

26 **Keywords:** genomic surveillance; SARS-CoV-2; sequence capture; tailed amplicon sequencing

27

28 ***Corresponding author email:** rafal.iwasiow@dnagenotek.com

29

30 INTRODUCTION

31 Human saliva is home to over 700 microbial species, and serves as protection against
32 bacterial, fungal and viral infections that could potentially reach the respiratory tract (Kilian et
33 al., 2016). It is composed of water and the secretion of salivary glands, dental plaque, as well as
34 nasal and bronchial secretions; thus, several different viruses in human saliva can be identified,
35 some of which may cause disease. The interactions with viruses and specific saliva components
36 can be virus-specific, complex and can potentially influence their detection as a result of the
37 biological functions of saliva (Y. Li et al., 2020). Viruses including, but not limited to hepatitis A
38 (Leon et al., 2015), hepatitis B (Khadse et al., 2016; Parizad et al., 2016), cytomegalovirus (De
39 Carvalho Cardoso et al., 2015), Epstein Barr virus (Kwok et al., 2015), Zika virus (Bonaldo et
40 al., 2016), and Severe Acute Respiratory Syndrome-Associated coronavirus (SARS-CoV) (Wang
41 et al., 2004), have all been detected in the saliva of infected individuals. This has prompted the
42 investigation of saliva as a potential sample type for the diagnosis of several of the mentioned
43 viruses, and of potential emerging and re-emerging viral pathogens.

44 The most recent virus from the *Coronaviridae* family known to infect humans, SARS-
45 CoV-2 has also been identified in the saliva of infected individuals (Y. Li et al., 2020). While the

46 origin of SARS-CoV-2 is a subject of ongoing research and speculation, it shares 96% identity
47 with a bat coronavirus (Zhou et al., 2020), 90% with coronaviruses present in pangolins (Zhang
48 et al., 2020), and 80% with SARS-CoV (Zhou et al., 2020). SARS-CoV-2 is known to also be
49 transmitted through aerosol droplets, which may also include salivary droplets. Several studies
50 have identified SARS-CoV-2 in saliva (Han and Ivanovski, 2020; Y. Li et al., 2020), and have
51 proposed its use as an alternative to nasopharyngeal (NP) and oropharyngeal (OP) sample
52 collection, which pose additional discomfort and the need for trained personnel (Yoon et al.,
53 2020). In addition, with the availability of at-home collection kits, subjects are more willing to
54 self-collect saliva (Valentine-Graves et al., 2020). Supervised, self-collected saliva has shown to
55 perform similarly to clinician-collected NP swabs for the detection of SARS-CoV-2 in terms of
56 virus detection and quantification (Noah et al., 2020). Success of detection methods for SARS-
57 CoV-2 depends, among many things, on the persistence and inactivation of the virus and nucleic
58 acids. For example, SARS-CoV-2 is detectable using reverse transcription PCR (RT-PCR) for an
59 average of 18 to 20 days, and up 21 to 26 days in some instances (To et al., 2020; Yoon et al.,
60 2020). Saliva has also been suitable for antibody testing, showing that SARS-CoV-2 antibodies
61 can be detected as early as 10 days (To et al., 2020). This further supports the use of saliva for
62 the detection of SARS-CoV-2 nucleic acids and antibodies. Other factors affecting SARS-CoV-2
63 detection include efficient viral lysis, with various commercially available kits and methods
64 showing varying levels of efficiency (Chu et al., 2020).

65 The gold standard for the detection of SARS-CoV-2 in any sample type is RT-PCR or
66 quantitative RT-PCR (RT-qPCR) (Takeuchi et al., 2020). As with any PCR-based method,
67 success will depend on primer specificity; thus, the RNA target genome(s) sequence(s) should be
68 known in order to increase sensitivity (D. Li et al., 2020). Other, less evaluated methods for the

69 detection and surveillance of SARS-CoV-2 in various sample types include high-throughput
70 sequencing. RNA high-throughput sequencing was originally used in combination with other
71 methods to identify the novel coronavirus in subjects suffering from pneumonia of unknown
72 origin, showing a similarity close to 90% to coronaviruses present in bats(Wu et al., 2020). High-
73 throughput sequencing can continue to be used for the surveillance of known and novel SARS-
74 CoV-2 variants, and also to determine genetic diversity, which is usually not provided by RT-
75 PCR or RT-qPCR (Pérez Cataluña et al., 2021). Two approaches have been developed for the
76 detection of SARS-CoV-2 in various sample types using high-throughput sequencing, namely,
77 untargeted and amplicon-based. Untargeted high-throughput sequencing provides the advantage
78 of detecting and monitoring both known and emerging SARS-CoV-2 variants, with the caveat of
79 requiring deeper sequencing to obtain the needed genome coverage for identification, making
80 this approach relatively more cost-prohibiting. Amplicon high-throughput sequencing, or
81 sequence capture methods, have been more widely applied for the detection of SARS-CoV-2 as
82 it represents a more cost-effective approach. One caveat of sequence capture approaches is the
83 failure to cover the entire viral genome as the primers usually cannot cover the genomic ends
84 (Gohl et al., 2020).

85 Approaches, such as the ARTIC network, have developed methods for amplicon pool
86 preparation for the sequencing of SARS-CoV-2 which involve a ‘lab-in-a-suitcase’ that can be
87 used in remote and resource-limited areas (<https://artic.network/1-about.html>). In the ARTIC
88 network protocol, the first cDNA strand is enriched by amplifying with two different pools of
89 primers. This generates amplicons tiling the virus genome, which are then subjected to either
90 Illumina or Oxford Nanopore library preparation and sequencing. More recently, a modification
91 to the ARTIC network protocol, known as tailed amplicon sequencing, has been developed to

92 reduce library preparation cost and time (Gohl et al., 2020). The method has been shown to
93 achieve results comparable to the ARTIC network protocol (Gohl et al., 2020). Briefly, in the
94 tailed amplicon approach, the first cDNA strand is enriched using the ARTIC v3 primers. In this
95 case, the primers also contain adapter tails that allow sequencing libraries to be created through a
96 second indexing PCR. This, in turn, adds sample-specific barcodes and flow cell adapters.
97 Notably, this modification to the ARTIC protocol has not been extensively tested in saliva
98 samples. Therefore, the main aim of the present study was to evaluate the suitability of the
99 modified tailed amplicon sequencing protocol for the detection of SARS-CoV-2 and its ability to
100 discern potential variants in human saliva.

101

102 **MATERIALS AND METHODS**

103 **Sample collection and RNA extraction**

104 Saliva samples were collected from various geographical locations in United States using
105 the OMNIgene®•ORAL OME-505 device (DNA Genotek, Inc) and shipped to Clinical
106 Reference Laboratory, Inc. for testing using the CRL Rapid Response™ COVID-19 Test. After
107 testing, the remaining saliva samples collected and stabilized in the OMNIgene®•ORAL OME-
108 505 devices, were stored at room temperature for up to 15 days prior to RNA extraction (**Table**
109 **1**). At a later point, one to fifteen days post diagnosis, eight randomly selected samples from a
110 pool of samples which had previously tested positive for SARS-CoV-2 by the CRL Rapid
111 Response™ COVID-19 Test were selected to be sequenced. The only criteria used for sample
112 selection was an initial Ct value <30 (**Table 1**). The randomly selected samples were extracted
113 using the Zymo Quick RNA/DNA Viral MagBead kit (Cat. No. R2141) following
114 manufacturer's instructions.

115

116 **Sample processing, sequencing and bioinformatic analyses**

117 The extracted RNA was then prepared and sequenced using previously described
118 methods in Gohl et al., 2020 (Gohl et al., 2020). Briefly, the integrity of the extracted RNA was
119 analyzed as described previously. After RNA quality and integrity was checked, RT-qPCR was
120 also performed as described previously. RNA was also processed through the amplicon-based
121 sequencing method that utilizes adapter tails with the ARTIC network v3 primers, allowing for a
122 more efficient library preparation (Itokawa et al., 2020). Sequencing was also performed as
123 previously described using a MiSeq 600-cycle v3 kit following manufacturer's instructions.
124 After sequencing, the paired ends were joined using PANDAseq (Masella et al., 2012) .
125 Unaligned reads were aligned to Wuhan-Hu-1 SARS-CoV-2 genome (MN908947.3) using BWA
126 (Li and Durbin, 2010; Wu et al., 2020). The Ivar software package was used for trimming and
127 filtering reads (Grubaugh et al., 2019). Ivar was also used to call variants and generate consensus
128 sequences. The consensus sequences were then strain typed using Pangolin ([github.com/cov-](https://github.com/cov-lineages/pangolin)
129 [lineages/pangolin](https://github.com/cov-lineages/pangolin)). Genome coverage plots were created using custom R scripts. Phylogenetic
130 tree was created using the Nextstrain web interface (Hadfield et al., 2018)(v0.14.2, commit:
131 f62d906, build 655).

132

133 **RESULTS AND DISCUSSION**

134 The present study evaluated a modified sequence capture approach, namely tailed
135 amplicon sequencing, for the detection of SARS-CoV-2 in the saliva of infected individuals [21].
136 Detection of SARS-CoV-2 in the saliva of infected individuals, both symptomatic and
137 asymptomatic, has expanded the toolbox of methods for the detection and diagnostics of the

138 virus. While RT-PCR and RT-qPCR are the standard methods for the detection of SARS-CoV-2
139 in various sample types, tailed amplicon sequencing approaches are also capable of identifying
140 SARS-CoV-2 in the saliva of infected individuals. Notably, results from the present study
141 showed that the tailed amplicon sequencing approach was successful in the identification of
142 various SARS-CoV-2 variants in human saliva (**Table 1**). Results also showed the suitability of
143 OMNIgene®•ORAL OME-505 for sufficient SARS-CoV-2 RNA recovery for tailed amplicon
144 sequencing. Moreover, storage of saliva samples at room temperature using OMNIgene®•ORAL
145 OME-505 for up to 15 days further supports the capacity of this collection device to capture
146 saliva composition at the time of collection, essential for SARS-CoV-2 diagnostics and
147 surveillance. While upper and lower respiratory tract specimens were first to be recommended
148 for SARS-CoV-2 diagnosis, saliva has gained acceptance as a suitable, non-invasive sample
149 type. Indeed, saliva has been included in numerous FDA Emergency Use Authorizations for the
150 purpose of SARS-CoV-2 diagnosis, including CRL Rapid Response™. The OMNIgene®•ORAL
151 OME-505 saliva collection device, which has received EUA for SARS-CoV-2 sample collection,
152 allows for self-collection and to circumvent the need to store samples on ice or frozen.

153
154 **Table 1.** Summary of relevant metadata associated with saliva samples including: Pangolin
155 lineage which indicates the strain identity, Nexclade clade identification which shows the
156 phylogenetic lineage of the variant, qPCR Ct value for diagnosis, number of raw fastq reads, read
157 depth on the genome after trimming primers, percent coverage of the genome after trimming and
158 the number of variants (mutations) identified using iVar.

159
160

Saliva	Pangolin	Nextclade	Collection	Diagnosis	Days	Fastqc	Depth	Coverage	ivar num
--------	----------	-----------	------------	-----------	------	--------	-------	----------	----------

sample ID	Lineage	Clade	Location	Ct value	from sample collection to RNA extraction	Raw Read Pairs	after trimming	(%) After Trimming	variants identified
A	B.1.2	20G	Belton, MO	27.01	15	192151	2316.21	99.96	18
B	B.1	20C	Wilmington, DE	14.01	12	260188	2413.47	99.44	21
C	B.1.2	20G	Bronx, NY	16.50	3	233789	2547.39	99.73	29
D	B.1.1.222	20B	Blacklick, OH	17.40	7	137894	1571.84	99.96	29
E	P.2	20B	Orient, OH	17.64	11	166102	2166.38	99.76	27
F	B.1.427	20C	Manhattan, KS	17.90	4	135078	1527.50	99.91	30
G	B.1.2	20G	Carson, CA	18.28	2	212666	2146.30	99.81	22
H	B.1.1.7	20I/501Y.V1	Topeka, KS	18.55	7	202621	2527.93	99.83	39

161

162 Interestingly, the tailed amplicon sequencing approach tested in the present study

163 provided near complete genomes (>99.4 % average genome coverage) for all eight samples

164 tested (**Table 1** and **Figure 1**). In addition, the tailed amplicon method produced a relatively

165 uneven genome coverage balance. Indeed, this has been noted previously when comparing the

166 tailed amplicon method with the ARTIC network protocol (Gohl et al., 2020). One feasible

167 explanation for this unevenness in genome coverage is the better balance of the untailed primers

168 utilized in the ARTIC network protocol. Nevertheless, near complete SARS-CoV-2 genomes

169 were obtained in the present study, which may improve insights into virus mutations, evolution,

170 and adaptation (e.g., increased transmissibility and infectivity) compared to evolutionary

171 relationships across spike protein sequences alone. Unlike specific genes, complete or near

172 complete genomic sequences provide the most high-resolution information that allows

173 determination of variant and strain relatedness during outbreaks and pandemics. Thus, the

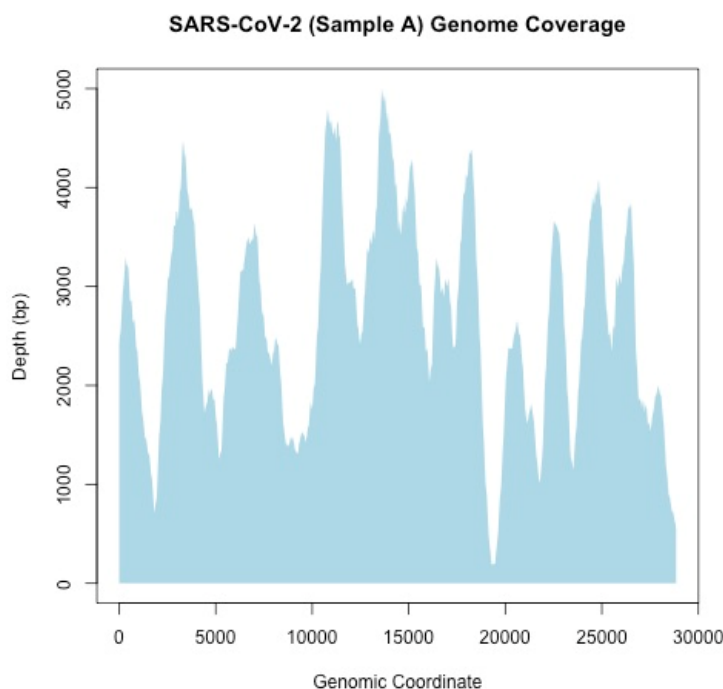
174 development of cost-effective and less time-consuming protocols to determine genomic

175 sequences is of importance. In addition, near complete genome information may also aid in the

176 classification of SARS-CoV-2 variants into strains. SARS-CoV-2 strain level resolution using

177 tailed amplicon sequencing approaches could potentially aid to bridge mutations within SARS-

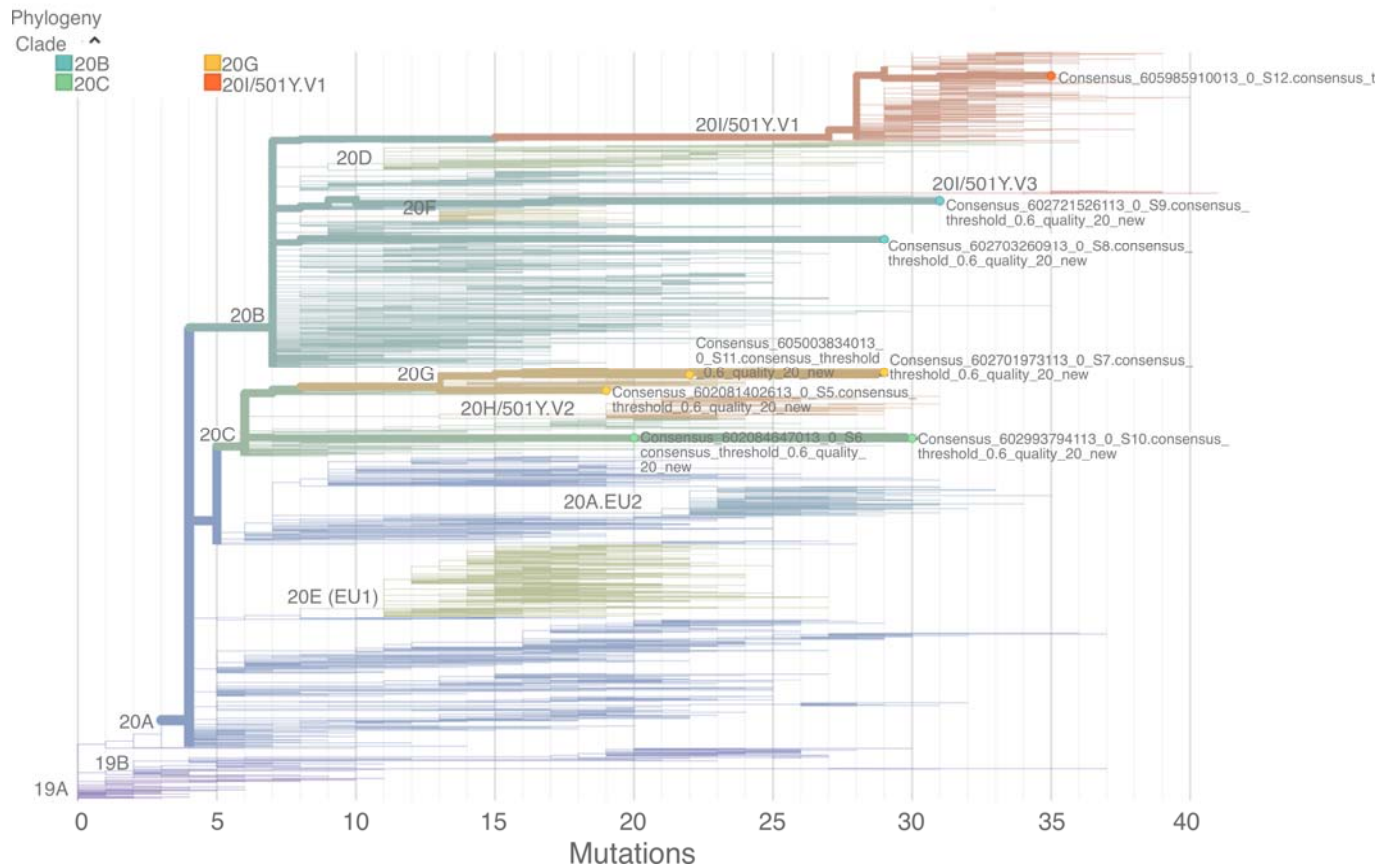
178 CoV-2 genomes at a global scale, which in turn may aid to understand virus transmission and
179 population dynamics. Variant level resolution of SARS-CoV-2 may also facilitate the
180 identification of novel target regions for vaccine development and therapeutics, particularly
181 regions across SARS-CoV-2 genomes that may be shared across variants and potential strains.



182
183 **Figure 1.** Representative example of SARS-CoV-2 genome coverage. Graph illustrates that the
184 combination of sample collection and sequencing methodology is sensitive enough to capture
185 most of the genome with very high coverage.

186
187 Near complete genomic sequences obtained using the tailed amplicon sequencing enabled
188 deciphering phylogenetic relationships across the various SARS-CoV-2 variants identified in the
189 saliva of the infected individuals in comparison with known clades (**Figure 2**). Results show
190 that, overall, the tailed amplicon method described above is sensitive enough to resolve, not only
191 large-scale genomic differences across different clades, but also differences within clades.

192 Phylogenetic relatedness may further contribute to the understanding of the pathogenic dynamics
193 of SARS-CoV-2 and associated strains over time and link these genetic variations to specific
194 geographical regions, which in turn can target genomic surveillance efforts.
195



196
197 **Figure 2.** Phylogenetic analysis of the SARS-CoV-2 variants using Nextstrain clades. Figure
198 shows that the methodologies described above are sensitive enough to resolve, not only large-
199 scale genomic differences across different clades, but also differences within clades.

200

201

202

203 **CONCLUSIONS**

204 The present study evaluated tailed amplicon sequencing as a suitable approach for the
205 detection of SARS-CoV-2 variants in the saliva of infected individuals collected using
206 OMNIgene®•ORAL OME-505. Near complete genome sequences were obtained using the
207 evaluated method, which in turn facilitated phylogenetic analysis with various SARS-CoV-2
208 variants. Near complete or complete genome sequences from SARS-CoV-2 variants continue to
209 be invaluable in disease control and prevention efforts during the COVID-19 pandemic; thus, the
210 evaluation of time- and cost-effective methods such as tailed amplicon sequencing is essential.

211

212 **Author contributions**

213 AG-data analysis, figure generation and manuscript draft editing. TSR-writing and editing of
214 original manuscript draft. HLF-sample collection and screening for positive samples RI-
215 conceptualization, and manuscript draft editing.

216

217 **Acknowledgements**

218 We thank Mike Tayeb, Geoffrey M. Graham and Austin Udacor for reviewing the manuscript
219 draft.

220

221 **Funding**

222 No funding was received for this study.

223

224 **Informed Consent and Release Statement**

225 Written informed consent and release statement has been obtained from the patient(s) to publish
226 this paper.

227

228 **Institutional Review Board Statement**

229 The study is exempt under 45 CFR § 46.104(d)(4), because the research involves the use of
230 identifiable private information/biospecimens; and information, which may include information
231 about biospecimens, is recorded by the investigator in such a manner that the identity of the
232 human subjects cannot readily be ascertained directly or through identifiers linked to the
233 subjects, the investigator does not contact the subjects, and the investigator will not re-identify
234 subjects.

235

236 **Conflict of interest**

237 AG and TSR are current employees of Diversigen Inc. RI is a current employee of DNA
238 Genotek.

239

240 **Data availability**

241 SARS-CoV-2 sequence genomes are available on the Global Initiative on Sharing Avian
242 Influenza Data (GISAID) site under IDs EPI_ISL_2156824, EPI_ISL_2156826,
243 EPI_ISL_2156827, EPI_ISL_2156821, EPI_ISL_2156810, EPI_ISL_2156811,
244 EPI_ISL_2156823, EPI_ISL_2156808.

245

246 **References**

247 Bonaldo MC, Ribeiro IP, Lima NS, dos Santos AAC, Menezes LSR, da Cruz SOD, et al.
248 Isolation of Infective Zika Virus from Urine and Saliva of Patients in Brazil. PLoS Negl Trop
249 Dis 2016. <https://doi.org/10.1371/journal.pntd.0004816>.

250 De Carvalho Cardoso ES, De Santos Jesus BL, da Silva Gomes LG, Sousa SMB, Gadelha SR,
251 Marin LJ. The use of saliva as a practical and feasible alternative to urine in large-scale
252 screening for congenital cytomegalovirus infection increases inclusion and detection rates. *Rev*
253 *Soc Bras Med Trop* 2015. <https://doi.org/10.1590/0037-8682-0200-2014>.

254 Chu AWH, Chan WM, Ip JD, Yip CCY, Chan JFW, Yuen KY, et al. Evaluation of simple
255 nucleic acid extraction methods for the detection of SARS-CoV-2 in nasopharyngeal and saliva
256 specimens during global shortage of extraction kits. *J Clin Virol* 2020.
257 <https://doi.org/10.1016/j.jcv.2020.104519>.

258 Gohl DM, Garbe J, Grady P, Daniel J, Watson RHB, Auch B, et al. A rapid, cost-effective tailed
259 amplicon method for sequencing SARS-CoV-2. *BMC Genomics* 2020.
260 <https://doi.org/10.1186/s12864-020-07283-6>.

261 Grubaugh ND, Gangavarapu K, Quick J, Matteson NL, De Jesus JG, Main BJ, et al. An
262 amplicon-based sequencing framework for accurately measuring intrahost virus diversity using
263 PrimalSeq and iVar. *Genome Biol* 2019. <https://doi.org/10.1186/s13059-018-1618-7>.

264 Hadfield J, Megill C, Bell SM, Huddleston J, Potter B, Callender C, et al. NextStrain: Real-time
265 tracking of pathogen evolution. *Bioinformatics* 2018.
266 <https://doi.org/10.1093/bioinformatics/bty407>.

267 Han P, Ivanovski S. Saliva-friend and foe in the COVID-19 outbreak. *Diagnostics* 2020.
268 <https://doi.org/10.3390/diagnostics10050290>.

269 Itokawa K, Sekizuka T, Hashino M, Tanaka R, Kuroda M. A proposal of alternative primers for
270 the ARTIC Network's multiplex PCR to improve coverage of SARS-CoV-2 genome sequencing.
271 *BioRxiv* 2020.

272 Khadse S V., Bajaj G, Vibhakar P, Nainani P, Ahuja R, Deep G. Evaluation of specificity and

273 sensitivity of oral fluid for diagnosis of hepatitis B. *J Clin Diagnostic Res* 2016.
274 <https://doi.org/10.7860/JCDR/2016/17319.7107>.

275 Kilian M, Chapple ILC, Hannig M, Marsh PD, Meuric V, Pedersen AML, et al. The oral
276 microbiome - An update for oral healthcare professionals. *Br Dent J* 2016.
277 <https://doi.org/10.1038/sj.bdj.2016.865>.

278 Kwok H, Chan KW, Chan KH, Chiang AKS. Distribution, persistence and interchange of
279 epstein-barr virus strains among PBMC, plasma and saliva of primary infection subjects. *PLoS*
280 *One* 2015. <https://doi.org/10.1371/journal.pone.0120710>.

281 Leon LAA, De Almeida AJ, De Paula VS, Tourinho RS, Villela DAM, Gaspar AMC, et al.
282 Longitudinal Study of Hepatitis A Infection by Saliva Sampling: The Kinetics of HAV Markers
283 in Saliva Revealed the Application of Saliva Tests for Hepatitis A Study. *PLoS One* 2015.
284 <https://doi.org/10.1371/journal.pone.0145454>.

285 Li D, Zhang J, Li J. Primer design for quantitative real-time PCR for the emerging Coronavirus
286 SARS-CoV-2. *Theranostics* 2020. <https://doi.org/10.7150/thno.47649>.

287 Li H, Durbin R. Fast and accurate long-read alignment with Burrows-Wheeler transform.
288 *Bioinformatics* 2010. <https://doi.org/10.1093/bioinformatics/btp698>.

289 Li Y, Ren B, Peng X, Hu T, Li J, Gong T, et al. Saliva is a non-negligible factor in the spread of
290 COVID-19. *Mol Oral Microbiol* 2020. <https://doi.org/10.1111/omi.12289>.

291 Masella AP, Bartram AK, Truszkowski JM, Brown DG, Neufeld JD. PANDAseq: Paired-end
292 assembler for illumina sequences. *BMC Bioinformatics* 2012. [https://doi.org/10.1186/1471-](https://doi.org/10.1186/1471-2105-13-31)
293 [2105-13-31](https://doi.org/10.1186/1471-2105-13-31).

294 Noah K, Fred T, Vlad S, Agatha B, Laura D, Siri K, et al. Self-collected oral fluid and nasal
295 swabs demonstrate comparable sensitivity to clinician collected nasopharyngeal swabs for

296 Covid-19 detection. MedRxiv 2020. <https://doi.org/10.1101/2020.04.11.20062372>.

297 Parizad Elaheh Gholami, Parizad Eskandar Gholami, Khosravi A, Amraei M, Valizadeh A,
298 Davoudian A. Comparing HBV viral load in serum, Cerumen, and saliva and correlation with
299 HBeAg serum status in patients with chronic hepatitis B infection. Hepat Mon 2016.
300 <https://doi.org/10.5812/hepatmon.30385>.

301 Pérez Cataluña A, Chiner-Oms Á, Cuevas Ferrando E, Díaz-Reolid A, Falcó I, Randazzo W, et
302 al. Detection Of Genomic Variants Of SARS-CoV-2 Circulating In Wastewater By High-
303 Throughput Sequencing 2021.

304 Takeuchi Y, Furuchi M, Kamimoto A, Honda K, Matsumura H, Kobayashi R. Saliva-based pcr
305 tests for sars-cov-2 detection. J Oral Sci 2020. <https://doi.org/10.2334/josnugd.20-0267>.

306 To KKW, Tsang OTY, Leung WS, Tam AR, Wu TC, Lung DC, et al. Temporal profiles of viral
307 load in posterior oropharyngeal saliva samples and serum antibody responses during infection by
308 SARS-CoV-2: an observational cohort study. Lancet Infect Dis 2020.
309 [https://doi.org/10.1016/S1473-3099\(20\)30196-1](https://doi.org/10.1016/S1473-3099(20)30196-1).

310 Valentine-Graves M, Hall E, Guest JL, Adam E, Valencia R, Shinn K, et al. At-home self-
311 collection of saliva, oropharyngeal swabs and dried blood spots for sars-cov-2 diagnosis and
312 serology: Postcollection acceptability of specimen collection process and patient confidence in
313 specimens. PLoS One 2020. <https://doi.org/10.1371/journal.pone.0236775>.

314 Wang WK, Chen SY, Liu IJ, Chen YC, Chen HL, Yang CF, et al. Detection of SARS-associated
315 coronavirus in throat wash and saliva in early diagnosis. Emerg Infect Dis 2004.
316 <https://doi.org/10.3201/eid1007.031113>.

317 Wu F, Zhao S, Yu B, Chen YM, Wang W, Song ZG, et al. A new coronavirus associated with
318 human respiratory disease in China. Nature 2020. <https://doi.org/10.1038/s41586-020-2008-3>.

319 Yoon JG, Yoon J, Song JY, Yoon SY, Lim CS, Seong H, et al. Clinical significance of a high
320 SARS-CoV-2 viral load in the Saliva. *J Korean Med Sci* 2020.
321 <https://doi.org/10.3346/JKMS.2020.35.E195>.
322 Zhang T, Wu Q, Zhang Z. Probable Pangolin Origin of SARS-CoV-2 Associated with the
323 COVID-19 Outbreak. *Curr Biol* 2020. <https://doi.org/10.1016/j.cub.2020.03.022>.
324 Zhou P, Yang X Lou, Wang XG, Hu B, Zhang L, Zhang W, et al. A pneumonia outbreak
325 associated with a new coronavirus of probable bat origin. *Nature* 2020.
326 <https://doi.org/10.1038/s41586-020-2012-7>.
327