

The roadmap for implementing value based healthcare in European university hospitals - consensus report and recommendations

AUTHORS

Yolima Cossio-Gil; Vall d'Hebron Barcelona Hospital Campus, Barcelona, Spain
ycossio@vhebron.net 0000-0002-8654-6690

Tanja Stamm (Corresponding author), MedUni Wien, Vienna, Austria Univ.-Prof. Dr. Tanja Stamm tanja.stamm@meduniwien.ac.at 0000-0003-3073-7284

Maisa Omara, MedUni Wien, Vienna, Austria: maisa.omara@meduniwien.ac.at 0000-0002-8834-2333

Carolina Watson; Vall d'Hebron Barcelona Hospital Campus, Barcelona, Spain
cwatson@vhebron.net 0000-0001-6237-7717

Joseph Casey, King's Health Partners, London, United Kingdom: joseph.casey@kcl.ac.uk

Alex Chakhunashvili, Karolinska University Hospital, Stockholm, Sweden:
alexandre.chakhunashvili@sll.se

François Crémieux, APHP, Paris, France francois.cremieux@aphp.fr

María Gutiérrez-San Miguel, Vall d'Hebron Barcelona Hospital Campus, Barcelona, Spain:
maria.gutierrezsm@vhebron.net 0000-0003-4756-1860

Pascal Kahlem, Scientific Network Management S.L. pkahlem@s-n-m.eu (0000-0002-8810-444X)

Samuel Keuchkerian, CFE-Consulting Group samuel.keuchkerian@cfe-consultinggroup.com (0000-0002-2706-8190)

Valerie Kirchberger, Charité, Berlin, Germany: valerie.kirchberger@charite.de 0000-0003-4478-8728

Virginie Luce-Garnier, APHP, Paris, France virginie.garnier2@aphp.fr

Dominik Michiels UZ Leuven, Leuven, Belgium: dominik.michiels@uzleuven.be 0000-0001-7948-6178

Matteo Moro Ospedale San Raffaele, Milan, Italy: moro.matteo@hsr.it 0000-0001-5398-6000

Barbara Philipp-Jaschek, AKH Wien & MedUni Wien, Vienna, Austria:
barbara.philipp.jaschek@akhwien.at

Simona Sancini, Ospedale San Raffaele, Milan, Italy; simona.sancini@gmail.com

Jan Hazelzet; Erasmus MC, Rotterdam, the Netherlands: j.a.hazelzet@erasmusmc.nl
0000-0002-9414-5539

Funding:

ERASMUS+ (Blueprint). Project title: Learning in ValuE based health care project.
Agreement number - 2018 - 1 - NL01 - KA202 - 039021

All experts participating in this study provided consent to have their names listed in this manuscript.

Abstract

Value based healthcare (VBHC) aims at improving patient outcomes while optimizing the use of hospitals' resources among medical personnel, administrations and support services through an evidence-based, collaborative approach.

In this paper, we present a blueprint for the implementation of VBHC in hospitals, based on our experience as members of the European University Hospital Alliance (EUHA). The EUHA is a consortium of nine large hospitals in Europe and aims at increasing quality and efficiency of care to ultimately drive better outcomes for patients. The blueprint describes how to prepare hospitals for VBHC implementation, analyses gaps, barriers and facilitators and explores the most effective ways to turn patient pathways to a process that results in high value care. Using a patient centric approach, we identified four core minimum components that must be established as cornerstones and seven organisational enablers to waive the barriers to implementation and ensure sustainability. The blueprint guides through pathway implementation and establishment of key performance indicators in six phases, which hospitals can tailor to their current status on their way to implement VBHC.

Introduction and background

Measuring outcomes that matter to patients is one of the cornerstones of value-based healthcare (VBHC)¹. VBHC puts outcomes at the center of the healthcare process and in relation to costs. It so determines the value of medical services which should be the driver for performance improvement in healthcare. Thus, VBHC contributes to the sustainability of healthcare systems and claims for reforming and re-constructing health systems globally². Aligning healthcare approaches, focussing primarily on patient outcomes, can transcend quality, increase efficiency and enable a patient-centric approach while reducing costs and burden on already overstretched support services¹.

Porter and Teisberg who pioneered VBHC argued that the transformation should be based on six interrelated elements: (i) organize into integrated practice units (IPUs), (ii) measure outcomes and costs for every patient, (iii) move to bundled payments for care cycles, (iv) integrate care delivery systems, (v) expand geographic reach and (vi) build and enable information technology platform^{3,4}. A similar approach has been followed in the so-called Quadruple Aim Model⁵ that focuses on increasing population health, while reducing the cost *per capita* and improving the experience of patients and caregivers. However, while the VBHC elements provide a broad view of the systems' parameters that need to be considered, implementation still remains largely in pilot phase^{6,7} and hospitals show diverse maturity levels. Thus, a general roadmap of transformational measures towards VBHC is lacking.

In 2017, nine leading European university hospitals established the European University Hospitals Alliance (EUHA), setting out a commitment towards excellence in healthcare,

education and research, with the overall aim to improve value of care in European. One of EUHA's working groups focuses specifically on value, with an emphasis on pathways and outcomes. It was formed to engage in defining the minimum requirements to achieve efficient implementation of VBHC in the environment of university hospitals, assuming that hospitals in the different countries would face similar resources and barriers. Furthermore, our ambition as a working group was to serve the hospital communities in their efforts to ensure that a patient-centric approach is taken while setting minimum requirements to increased efficiency when implementing VBHC measures. Moreover, we aimed at supporting other hospitals to start, integrate and further develop VBHC within their institutions and healthcare systems. We also aimed to define the training needs regarding VBHC for different healthcare professionals. We therefore established a generic roadmap ("blueprint") for the implementation of VBHC in a hospital, including the different phases and the identification of possible enablers and barriers. Since there is no single definition of VBHC or of the meaning of value in a health context, we used a definition from the European Commission experts⁸. We also considered, that no matter how exact the definition of value was, our proposed blueprint would be of use for organizations in moving towards an outcome-driven patient-centered system.

Methods

We performed an international, multicenter consensus process. The multidisciplinary working group consisted of two convenors (YC, JH), a methodologist (TS) and experts in patient-reported health outcomes, care process improvement and care pathway design. Experts' backgrounds spanned from nurses, medical doctors, process engineers, statisticians, hospital managers and outcomes researchers working in one of the nine EUHA university hospitals. An average of two experts participated per hospital.

The working group members were asked to indicate whether any step was considered, planned and/or implemented within their institution. We then met seven times face-to face or virtually, added field-visits, where possible, separated by periods of two months. During the face-to-face meetings at the different hospitals, we analysed the level of implementation of VBHC, exchanged knowledge on real evidence and learned from each other. Within this iterative process, we selected specific critical components for the implementation of VBHC in our hospitals. We invited external experts to discuss the following specific topics to our meetings: team collaboration, service design, outcomes measurement, lean methodology and organizational transformation, process improvement, VBHC strategy and tactics, and information technology. All experts' contributions acted on a non-commercial basis. We then drafted a process for implementing VBHC. In email rounds, we asked the working group members to comment on the draft version of the blueprint document until we reached the final version. In case of contradictory comments, the convenors and the methodologist discussed the pros and cons of each argument until consensus was achieved.

Results

We identified eight mandatory components to implement VBHC in a hospital (Figure 1) and grouped them into four main areas: the first three areas refer to Porter's six core elements⁹ and a fourth one was added by us. The first main area refers to **(i) organizing care pathways**. This is related to the IPU recommended by Porter. Implementing a transformation to IPU can become expensive and time consuming in university hospitals. It also requires extensive organizational and cultural changes in the way care is delivered. Therefore, we recommend starting with redirecting the process of attention in the form of a continued assistance by clinical condition. Mutual visits/exchange of staff with participation in care in a previous or subsequent unit can enhance the IPU mindset. However, in this document, we consider pathways rather than IPU. The second area is **(ii) collecting a set of outcomes**, including clinical outcomes, patient-reported outcomes measures (PROMs) as well as experience measures (PREMs), process indicators and in a later stage also costs at the patient level. **(iii) Building an information platform** is the third area. We recommend to enable the collection of PROMs integrated within the patient pathway and the visualisation of these data using dashboards where indicators are represented. This information platform must allow to communicate and provide feedback regarding PROMs to clinical teams and also feedback to patients about their own health status. The set up of a datawarehouse environment on VBHC, taking into account that process indicators and general care information (EMR) need to be linked to PROMs and PREMs. Another fourth area is **(iv) actively using short-term and long-term outcomes for clinical decisions and for improving care, with the aim for a patient-centric approach**. Cultural change towards actively using the PROMs and PREMs with the

patients, and enabling shared decision-making tools is mandatory in order to grasp significant patient-centered care.

Based on these four main areas, we structured the implementation in six development phases (Figure 2). While phase 1 corresponds to the preparation of the whole organization for VBHC, the following five phases entail the concrete implementation of the clinical pathway.

Phase 1: Preparation of the whole organization for VBHC: Institutional Strategy

In this phase, the organization sets up the strategic plan for the implementation of VBHC, including evaluation and follow-up of the maturity and readiness to transform towards VBHC. The main actors in this phase are the board members, who create a strategic umbrella for implementing VBHC in all levels of the organization. If the organization is not yet ready for the substantial change, we recommend starting with pilots. Also, we suggest to align board members, map the current situation and analyse the gaps using an evaluation tool of the maturity of the organization in relation to value, e.g. the Value Accelerators. In addition, it is important to identify a sustainable model for scaling VBHC up to the entire organization and consider starting value purchasing methods and negotiating the payment for value. Parallel to this process, the hospital should set up a communication strategy (internal for hospital staff and external for the population, for the insurance agencies, government and other providers) and advocate for the VBHC inside and outside of the hospital.

A Central Support Team (CST) should be created with at least one strategic and one operation lead. They should be trained to be able to help all the clinical leaders with the implementation of each clinical pathway. Staffing these teams is essential. The team size can

vary according to the size of the organization. The multidisciplinary nature of the support team is recommendable as clinical points of view are essential in order to connect with the clinical leads and enhance the cultural change but may be “too deep” into the hospital culture. New mindsets from other professional profiles may be of added value in order to bring on fresh inputs in the re-organization of the care pathways that come with VBHC.

Hospitals need to prioritize the clinical conditions/pathways. Board members should decide which one to start with, in order to apply the appropriate changes at the organisational level. The best strategy in each specific case should be defined (to go in deep with the pathway or identifying quick wins). We recommend to start with the clinical pathway where clinical leads show a great commitment and the team is engaged. Once the organization is gaining experience in the implementation, other criteria can be added, if there is room for improvement (e.g. fragmented care, lack of standardization in the procedures, results, costs, etc). Finally in this phase, we need to set up a follow up and evaluate the changes in the organization towards value.

Phase 2: Preparation of each clinical pathway

This phase includes the steps to prepare the team for starting a new working model and for measuring the baseline situation of the costs, team culture and patients experience prior to implementing VBHC. The main actors in this phase are the members of the central support team. We recommend to ensure leadership and multidisciplinary participation, including physicians, non-physician health professionals including nurses, porters, administrative staff, social care, business intelligence/data managers, pharmacy. Hospitals should choose

leader/s and some should sign an agreement of commitment between the clinical lead and the organization. Goals and expectation of the team members must be assessed and potential barriers identified. Team culture should facilitate communication between all the people involved in the clinical pathway and using communication tools should ensure that everyone receives the information. The ideas that arise from people that are not part of the improvement/working group are also included. It is important to ensure their engagement during the process and in decision-making.

Hostpitals should provide training and tools on methodologies to improve quality and processes, including, but not limited to, shared decision-making, culture of continuous improvement, communication with the patient and other tools that help the team to lead the changes. Furthermore, patients should be clustered into rational groups. Organizing care into pathways requires the ability to assign patients to pathways. Sometimes this is straightforward but not always. We recommend to group them according to a defined logical model (for example, using SNOMED codes or other grouping parameters).

The hospital should evaluate the baseline situation, including the outcomes which are measured, and conduct surveys on the current state of the culture of care. VBHC is about improving patient treatment results and costs, but also reducing the burden on professionals and improving satisfaction with their work. Therefore, in addition to measuring the baseline costs, PREMs (Patient Reported Experience Measures) and the process indicators of each clinical pathway, we recommend to measure the clinical team culture and work environment.

Phase 3: Design (by the CST and the clinical team)

In this phase, the outcome set and the standard of care for patients with the selected clinical condition should be defined. It should include process indicators to measure over (lead times, reports, presence of key interventions, among others) and the underuse of health care, detecting the possible root cause of outcome deficiencies and identifying the appropriateness of clinical practice linked to the outcomes. Surrogate measures, understood as those that are related/associated to higher level measures, should be taken into account. For instance, in the case of diabetes, HbA1c can be an example of such a surrogate measure since it has a profound impact on the higher-level measures such as mortality and morbidity (e.g. unwanted complications as a result of an intervention due to other clinical condition).

In this phase, the central support team should help the clinical team to find a better standard of work and to decide the outcomes of value that will be measured and monitored. Important is to co-design the pathway and outcomes with patients and team by considering what matters to patients. Focus groups, journey map, surveys to patient, literature reviewing could be some of the methodologies that could help in this stage. A continuous improvement process should be stated based on the outcomes measured.

Phase 4: Building (by the IT and the clinical team)

In this phase, the IT and business intelligence staff create the solutions for collecting, analysing and visualizing the outcomes and the process indicators. In parallel, the clinical team should start to implement the main changes to improve the pathway or circuit of attention. Note that the improvement of the pathway also continues in all the other phases in an iterative manner.

Outcome data need to be integrated in the electronic health records. IT experts need to prepare EMRs to check key interventions. We recommend to move from retrospective to prospective indicators including costs for an individual patient stay/journey. Dashboards or other tools could help the team to easily visualize indicators of processes and outcomes to make the continuous improvement. Visualizing outcomes will help clinicians to improve communication with patients as well as monitoring in between clinical visits. Patients should have access to their own outcomes and evolution over time.

Phase 5: Implementing (by the clinical teams)

Implementing VBHC on an organizational level as well as in a pilot environment requires a multi-level effort. In this phase, the team should focus on getting the capture of PROs as well as the implementation of changes to the health care pathway. It should also already at this point in time consider the continuous monitoring of both. The main actors here are the clinical lead and the clinical team. Measuring outcomes and fostering discussions on treatment pathways will facilitate the culture and organizational changes that were planned in phases 2 and 3 (mainly organizing pathways, breaking profile-based culture, patient-focused culture).

Continuous improvement could be ensured through systematic “Plan Do Check Act” (PDCA) cycles: Follow the implementation process with indicators related to PRO measurement (i.e. compliance of the questionnaires) and to clinical appropriateness along the pathway (optimal timings, overuse and underuse). Regular meetings where PDCA could be used as a tool and mindset for improvement, distinguishing PDCA cycles for data collection (i.e. involvement of patients and clinicians) and PDCA cycles for the pathway itself.

Phase 6: Evaluation and improvement

In this phase, we recommend to use the outcomes and process indicators to evaluate the changes and follow up the improvement. Annually or biannually, PREMs, culture within the disease teams as well as costs should be assessed and compared with the baseline data. Patient feedback should be used to facilitate continuous improvement. Periodic meetings with the full team (every 2-3 months) to assess the aggregate outcomes and plan actions for improving them. We recommend to use a methodology to find the real cause of the problems and to prioritize the actions. Results should be communicated with teams, the board members, the rest of the organization and to external stakeholders according to the strategy defined earlier.

Results could be also compared to learn and innovate. Best practice examples could be identified and used to innovate research and training.

Challenges and enablers

Table 1 summarizes the key gaps and barriers identified by the working group. We also propose mitigation strategies and recommendations on how to overcome each of them.

Discussion

This paper summarizes the development and implementation of a VBHC blueprint based on the consensus from nine of the largest university hospitals in the EU. This was driven by the opinions and experiences of the working group, and could be used as a strategic tool and guidance to university hospitals.

While prior studies have identified the importance of implementing VBHC, very little has been made in terms of guidelines to health care organizations and hospitals as to how implementation should be managed and sustained. Our roadmap provides for the first time, practical and applicable recommendations to each phase of the implementation of VBHC from a hospital management perspective. With this we added, in our opinion, an important component to Porter's agenda.

This paper focuses on three main points of Porter's agenda (IPU-outcomes-platform), but it addresses neither the cost-per-patient measurement, the organisation transformation towards a payment model based on value-based results/value based pricing, nor the integration and coordination with other services such as primary care, social care, and others. While we address the hospital perspective only, the implementation of VBHC needs to be embedded in a larger healthcare ecosystem. Implementing VBHC involves a broader range of elements than those described in this report (e.g. payments, etc). For all these reasons, this paper should be considered as an initial set of recommendations to foster building the bases at the hospital level, and future studies on the current topic are therefore recommended.

While top-down implementation experiences have shown poor response and adherence from patients, due to lack of commitment to improvement by the lower-level employees¹⁰ bottom-up experiences are usually pilots with difficulties in terms of consolidation and entrenchment of a general model or blueprint. From our point of view, hospitals must promote an implementation integrated in the practical clinical practice. The implementation needs the commitment and action of many actors of the healthcare system, beyond the hospital itself. Clinical teams and patients must have access to the data for making changes at the point of care and discuss the decision with patients. The hospital cannot change the payment system itself, but can either test different models to convince the payer or get prepared to face the model of the change when it comes.

It is important to understand that implementing VBHC should be based on an iterative process including evidence and a continuous self-learning process in order to achieve the maximum patient-relevant medical benefits (outcomes) and minimize the costs. Accordingly, it could be more practical to start the process through a well-designed pilot in order to evaluate risks and opportunities on real life circumstances. It is recommended to embed the pilot as much as possible in generic systems of the whole hospital and let them grow/mature together, as scaling up the VBHC journey is completely dependent on this balance. Starting the pilot in a selected health condition or pathway where better circumstances are available (e.g. motivated clinical lead and engaged team) could be the way to initiate a proper understanding for the process and how it can be implemented, although it might not reveal at the beginning all challenges which might be encountered. Moreover, the choice to start with selecting specific health conditions/care pathways or to have a complete VBHC transformation should be tuned to the specific situation of each institution. Although

adopting specific conditions and care pathway strategies then scaling up to other conditions seems to be a less risky approach, both models should be further studied and explored in the future including their related outcomes and costs.

Identifying a sustainable model for VBHC is a very important approach to visualize the future of VBHC within the organization and ensure the success of the system on the short and long term. Therefore, advocating for VBHC with providers and payers and setting a long-term plan with all stakeholders is an essential step.

Acknowledgements

We acknowledge and are grateful for the valuable contribution of external organization experts:

Michele Van Der Kemp. Expert on Value Based Health Care Strategy and Tactics: Implementation

Muir Gray. Professor and Executive Director at Oxford Centre for Triple Value Healthcare

Gregory Katz. Chaired professor of Innovation & Value in Health at University of Paris School of Medicine, and President of the Consortium VBHC France

Ingeborg Griffioen. Industrial designer at Panton Medical design Agency - Patient Journey - service design

Mona Krichen. Director of the Organizational transformation engineering department. Agence Nationale d'Appui À la Performance (ANAP)

Stéphanie Aftimos. Lean Black Belt - Agence Nationale d'Appui À la Performance (ANAP)

Tim Wilson. Managing Director at Oxford Centre for Triple Value Healthcare

Mathias Ekman. Director Industry Solutions Executive for Healthcare at Microsoft Western Europe.

Kris Vanhaecht. Associate Professor Quality in Healthcare at KU Leuven

References

1. Porter ME. What is value in health care. *The New England journal of medicine* 2010;363:2477-81.
2. Gray M. Value based healthcare. *British Medical Journal Publishing Group*; 2017.
3. Porter ME, Lee TH. The strategy that will fix health care. *Harvard business review* 2013;91:24-.
4. Porter ME, Teisberg EO. *Redefining health care: creating value-based competition on results*: Harvard business press; 2006.
5. D'Alleva A, Leigheb F, Rinaldi C, et al. Achieving quadruple aim goals through clinical networks: A systematic review. *Journal of healthcare quality research* 2019;34:29-39.
6. van Egdom LSE, Legendijk M, van der Kemp MH, et al. Implementation of Value Based Breast Cancer Care. *European journal of surgical oncology : the journal of the European Society of Surgical Oncology and the British Association of Surgical Oncology* 2019;45:1163-70.
7. Valentijn PP, Biermann C, Bruijnzeels MA. Value-based integrated (renal) care: setting a development agenda for research and implementation strategies. *BMC health services research* 2016;16:330.
8. Defining Value in Value-Based Healthcare. Publications Office of the European Union. 2021, at https://ec.europa.eu/health/expert_panel/sites/expertpanel/files/docsdire/024_defining-value-vbhc_en.pdf.)
9. Porter ME, Teisberg EO. How physicians can change the future of health care. *Jama* 2007;297:1103-11.
10. Meinert E, Alturkistani A, Brindley D, Knight P, Wells G, Pennington Nd. The technological imperative for value-based health care. *British Journal of Hospital Medicine* 2018;79:328-32.

Table 1. Gaps and barriers for each of the key enablers (KE) identified by EUHA Outcome & Pathways working group and mitigation strategies & recommendations to each of them.

Gaps & barriers	Mitigation & recommendations
KE: Organisational engagement and governance	
<p>Data on cost effectiveness for decision making are lacking</p>	<p>Start with controlled pilots where you can optimize resources and show quick and positives results Best Possible Value methodology to be used for business cases and options appraisal, for ex. broader resources appraisal (overheads, rent, out/insourcing) vs detailed cost effectiveness analysis Dashboard of process measures – how long did it take for a decision to be made from 1st meeting to approval? How many reiterations to various committees/working groups? How many resources working on that?</p>
<p>Executive leadership’s lack of clarity on strategic priorities</p> <p>No clear governance process in the Trust (re: how to escalate VBHC issues/benefits)</p> <p>Lack of key skills or willingness to contribute to the VBHC methodology</p> <p>Lack of engagement to enable and support VBHC work further development (e.g. IT support, PMO support, endorsement of training or pathways redesign)</p>	<p>“Behind the scene” work with 1:1 and 1:team meetings and customised communication strategy with key senior stakeholders within the organisation to raise consensus Identify “external” forums/organisations/partnerships which can influence powerfully the executive leadership to unlock barriers Prepare a slide deck / materials with a clear VBHC strategy and vision statement to support your engaging campaign and proposed governance structure for your VBHC programme (e.g. steering board, delivery group, faculty, implementation group etc)</p>
KE: Communication, Evaluation and Change management	
<p>No shared definition of Value-Based Healthcare for the pathways working group</p>	<p>Training will need to set a shared definition and vision for the working group from early days</p>
<p>Lack of understanding if progressing as expected and if generating “value”</p>	<p>Central Support Team (CST) to set KPIs and forecast expected deliverables from the beginning of the project/programme</p>
<p>Identify the evaluation framework and criteria from the beginning</p>	<p>Set baseline and forecast expected improvement on outcome measures and /or other elements of value (measurement plan)</p>
KE: Training, research and innovation	
<p>No formal training programme</p>	<p>Clear Training Programme/Strategy with expected deliverables, incl. customising contents for local needs (“one size does not fit all”)</p>
<p>No understanding of the purpose, audience, inconsistency with other existing training interventions in the organisation</p>	<p>Sharing contents/materials within EUHA</p>
<p>Lack of capacity for delivering the training</p>	<p>Executive endorsement for VBHC and scouting existing skills in the organisation or close by</p>

KE: Professional leadership and engagement	
Lack of social acceptance within medical teams of the VBHC concept, framework and tools?	Demonstrating benefits through responsabilisation, early engagement within the VBHC framework and tools developed in one hospital?
Lack of engagement	Trainings, knowledge transfer, dissemination, case studies?
Lack of engagement from ALL the stakeholders that can contribute to implement the “value equation” (e.g. from patient safety, patient experience, clinical effectiveness to operations, finance, analytics etc.)	Have a clear stakeholder analysis for each of your VBHC project Understand what matters to each of these groups of professionals and customise VBHC offer with an “attractive” message for them – what would be the benefit out of the programme for them?
See also the key enabler “Organisational engagement and governance”	
KE: Patient engagement	
Lack of access to data & studies Internal skills on patient engagement – how to involve patients, when and how? Lack of clarity on required skills for patients recruitment as well as requirements from their role and degree of engagement	Involve your Patient Experience lead or seek for PPI leads/expertise close to your organisation Clarify what are the expectations from patients, e.g. Job Description for recruitment Have a clear model for engagement in place (incl. reimbursements of travelling costs, rewarding vouchers, upskilling training opportunities)
KE: Health informatics and data as facilitator	
Fragmentation of communities & tools	Refine your remit: what is the change you are trying to achieve and what can you influence? “Knowledge exchange workshop”, e.g. what are the data that matter to the multi-disciplinary team vs what are those available and accessible
Costing data – ad hoc studies / analysis	Have a clear value question on what you want to demonstrate / achieve with your costing analysis, in order to decide on the best methodology to use (e.g. system wide overview with your pathway cost vs peers in the region; costing of one intervention in the pathway vs another one, etc) Define your population from very beginning working with coding and others. Engage finance departments from day 1 Seek for data / finance skilled people interested in helping you with this
KE: Transparency and benchmarking	
Access to patients’ data	Work with your Analytical team to try to anonymise your Patient’s identification number Clarify the purpose of your redesigning pathway project, e.g. not research / ethical involvement required

Access to EUHA members outcome where there are no e-dashboard or electronic systematic reporting (no electronic clinical notes/outcomes repository)	Maintain high level of communication between EUHA members
---	---

Figure 1

The hospital/s are or have:		Hospital 1	Hospital 2	Hospital 3	Hospital 4	Hospital 5	Hospital 6	Hospital 7	Hospital 8	Hospital 9
Core components of the agenda of VBHC	Organized into integrated practice units or Re-designing and improving the pathways in order to add value to patients	Not present	Present	Present	Present	Present	Present	Present	Not present	Not present
	Routinely measuring outcomes that matter to patient: Clinical outcomes	Present	Present	Present	Present	Present	Present	Present	Not present	Present
	Routinely measuring outcomes that matter to patient: PROMs	Present	Present	Present	Some form	Present	Some form	Present	Not present	Present
	Routinely measuring experience that matter to patient: PREMs	Some form	Some form	Some form	Some form	Some form	Some form	Some form	Some form	Some form
	Routinely measuring costs at patient level	Not present	Some form	Some form	Not present	Not present	Not present	Not present	Not present	Not present
	A built and enabled information technology platform	Not present	Present	Some form	Some form	Not present	Some form	Some form	Not present	Present
	Integrated care delivery across separate facilities	Not present	Some form	Not present	Not present	Some form	Not present	Not present	Not present	Some form
	Moving for bundled payments for Value for clinical condition	Present	Present	Not present	Some form	Not present	Not present	Not present	Present	Not present
Others	Using those outcomes for making clinical decisions and for improving the care of the patients	Present	Present	Some form	Present	Some form	Some form	Present	Not present	Some form
	Evaluating changes in the culture of your organization	Not present	Present	Present	Not present	Not present	Some form	Not present	Not present	Not present
	Including patients in the clinical but also organizational decisions	Not present	Some form	Some form	Present	Some form	Not present	Some form	Not present	Not present

medRxiv preprint doi: <https://doi.org/10.1101/2021.05.18.21257239>; this version posted May 29, 2021. The copyright holder for this preprint (which was not certified by peer review) is the author/funder, who has granted medRxiv a license to display the preprint in perpetuity. It is made available under a CC-BY-NC-ND 4.0 International license.

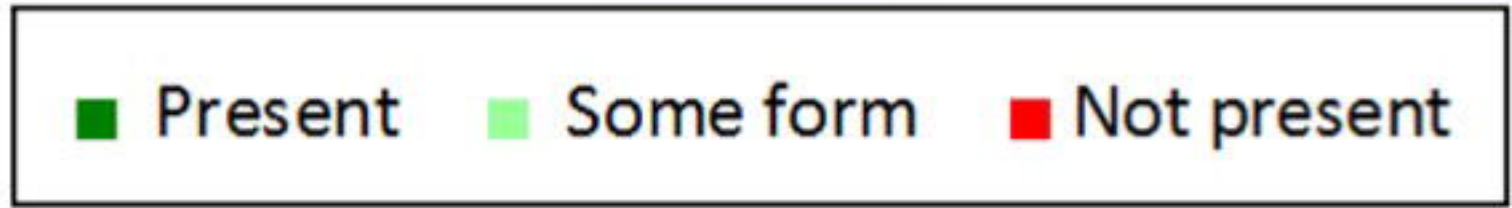
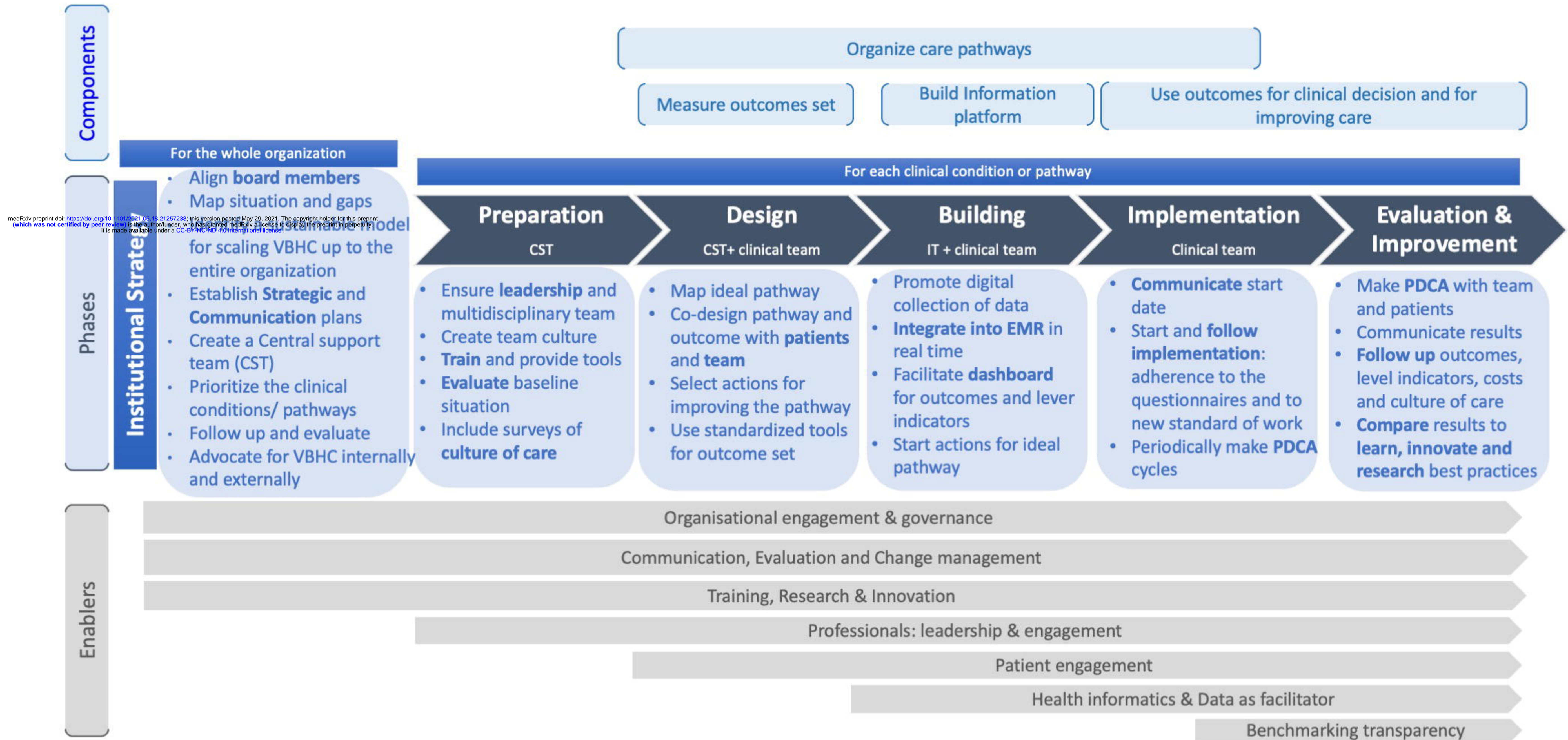


Figure 2



medRxiv preprint doi: <https://doi.org/10.1101/2021.05.19.21257238>; this version posted May 29, 2021. The copyright holder for this preprint (which was not certified by peer review) is the author/funder, who has granted medRxiv a license to display the preprint in perpetuity. It is made available under a CC-BY-NC-ND 4.0 International license.