

1           **Genetic estimates of correlation and causality between blood-based**  
2                                   **biomarkers and psychiatric disorders**

3

4   William R. Reay<sup>1,2</sup>, Dylan J. Kiltschewskij<sup>1,2</sup>, Michael P. Geaghan<sup>1,2</sup>, Joshua R. Atkins<sup>1</sup>,  
5   Vaughan J. Carr<sup>3,4,5</sup>, Melissa J. Green<sup>3,4</sup>, Murray J. Cairns<sup>1,2</sup> \*

6

7   <sup>1</sup>School of Biomedical Sciences and Pharmacy, The University of Newcastle, Callaghan,  
8   NSW, Australia

9   <sup>2</sup>Centre for Brain and Mental Health Research, Hunter Medical Research Institute,  
10   Newcastle, NSW, Australia

11   <sup>3</sup>School of Psychiatry, University of New South Wales, Randwick, NSW, Australia

12   <sup>4</sup>Neuroscience Research Australia, Sydney, NSW, Australia

13   <sup>5</sup>Department of Psychiatry, Monash University, Melbourne, VIC, Australia

14

15   To whom correspondence should be addressed: Professor Murray Cairns

16   ([Murray.Cairns@newcastle.edu.au](mailto:Murray.Cairns@newcastle.edu.au))

17

18   **Running title:** Biochemical traits and psychiatric disorders

19

20   **Keywords:** genome-wide association study, genetic correlation, causal inference,  
21   biochemical traits, pleiotropy, psychiatric illness

22

23

24

**NOTE: This preprint reports new research that has not been certified by peer review and should not be used to guide clinical practice.**

25 **ABSTRACT**

26 There is a long-standing interest in exploring the relationship between blood-based biomarkers  
27 of biological exposures and psychiatric disorders, despite their causal role being difficult to  
28 resolve in observational studies. In this study, we leverage genome-wide association study data  
29 for a large panel of heritable biochemical traits measured from serum to refine our  
30 understanding of causal effect in biochemical-psychiatric trait pairings. In accordance with  
31 expectation we observed widespread evidence of positive and negative genetic correlation  
32 between psychiatric disorders and biochemical traits. We then implemented causal inference  
33 to distinguish causation from correlation and found strong evidence that C-reactive protein  
34 (CRP) exerts a causal effect on psychiatric disorders, along with other putatively causal  
35 relationships involving urate and glucose. Strikingly, these analyses suggested CRP has a  
36 protective effect on three disorders including anorexia nervosa, obsessive-compulsive disorder,  
37 and schizophrenia, whilst being a risk factor for major depressive disorder. Multivariable  
38 models that conditioned CRP effects on interleukin-6 signalling and body mass index  
39 suggested that CRP-schizophrenia relationship was not likely mediated by those factors.  
40 Collectively, these data suggest that there are shared pathways that influence both biochemical  
41 traits and psychiatric illness, including factors such as CRP that are likely to constitute a causal  
42 effect and could be targets for therapeutic intervention and precision medicine.

43

44

45

46

47

48

49

50 **MAIN TEXT**

51 **INTRODUCTION**

52 Psychiatric disorders arise from a complex interplay between genetic and environmental risk  
53 factors. Indeed, twin-based and genome-wide association (GWAS) studies' heritability  
54 estimates have demonstrated the importance of genetic risk to the spectrum of psychiatric  
55 illness (1–3). In particular, GWAS have been successful in identifying regions of the genome  
56 associated with psychiatric disorders, as well as revealing both overlapping and distinct  
57 features amongst the genetic architecture of these traits (2–6). For example, our group  
58 previously demonstrated that several genes associated with schizophrenia were shared with  
59 other psychiatric disorders, along with genes that appeared more specifically linked to  
60 schizophrenia (4). The challenge for psychiatric genetics from here onwards is to integrate and  
61 expand these data such that the biological insights gained may be directly relevant for  
62 psychiatric practice.

63

64 GWAS has proven valuable beyond just gene discovery in psychiatry, in that it allows the study  
65 of relationships between sets of traits in terms of genetic correlation (7), as well as GWAS  
66 informed methods for causal inference (8,9). An area of continued interest is the interplay  
67 between circulating biochemical factors and the pathophysiology of psychiatric disorders (10–  
68 13). These studies have endeavoured to find biochemical traits readily detectable in blood, that,  
69 in theory, could be diagnostic or prognostic biomarkers for a given psychiatric disorder. Many  
70 of these hypotheses stem from the idea that peripheral biochemical traits may exert an effect  
71 on the brain, directly or indirectly through their effect on other mediators, and that the  
72 manifestation of mental illness is in part attributed to these factors which primarily act in the  
73 periphery (11,12,14–16). Identifying these biochemical-psychiatric relationships would be  
74 clinically valuable as many of these traits can be modulated by existing drugs and/or lifestyle

75 interventions. However, progress in this field has been hampered by small sample size studies,  
76 along with the fact that the majority of these studies are observational in nature, and thus, likely  
77 subject to at least some confounding. Genetics offers an attractive prospect for studying  
78 biochemical traits in psychiatry as many such measures are heavily influenced by genetic  
79 factors, with germline genetic variants fixed at birth and immune to reverse causation in most  
80 instances. In this study, we attempt to harmonise inter-study variability by using a panel of  
81 large sample size ( $N > 300,000$ ) biochemical GWAS from a single cohort (UK biobank) to  
82 investigate genetic overlap with different psychiatric disorders, along with putative causal  
83 effects. We found that the majority of biochemical traits tested were genetically correlated with  
84 at least one psychiatric trait, with evidence of convergent and divergent correlation profiles  
85 amongst the different disorders. Interestingly, we also demonstrated evidence that there may  
86 be a causal relationship on psychiatric phenotypes through circulating C-reactive protein  
87 (CRP), glucose, and urate – which may have direct implications for clinical practice.

88  
89  
90  
91  
92  
93  
94  
95  
96  
97  
98  
99

## 100 **METHODS AND MATERIALS**

### 101 **Psychiatric genome-wide association studies**

102 GWAS summary statistics for nine European ancestry cohorts for the following disorders were  
103 obtained from the psychiatric genomics consortium (PGC): attention/deficit hyperactivity  
104 disorder (ADHD) (17), anorexia nervosa (AN) (18), autism spectrum disorder (ASD) (19),  
105 bipolar disorder (BIP) (20), major depressive disorder (MDD) (21), obsessive compulsive  
106 disorder (OCD), post-traumatic stress disorder (PTSD) (22), schizophrenia (SZ) (23), and  
107 Tourette's syndrome (TS) (24). Given that cognitive symptoms are pervasively associated with  
108 psychiatric illness, we also included a GWAS of general cognitive ability (25). Further  
109 information regarding these studies is provided in the supplementary text.

110

### 111 **Blood-based biomarker genome-wide association studies**

112 We obtained GWAS summary statistics for a series of blood-based biochemical traits from the  
113 large UK biobank (UKBB) sample performed by the Neale group ([http://www.nealelab.is/uk-](http://www.nealelab.is/uk-biobank)  
114 [biobank](http://www.nealelab.is/uk-biobank)). The key advantage of these data is its large sample size ( $N > 300,000$ ) and that the  
115 biochemical traits analysed were obtained from a single large cohort. Specifically, we utilised  
116 a panel of 50 biochemical GWAS which had high or medium confidence estimates of SNP  
117 heritability that were significantly different from zero as outlined in supplementary table 1 and  
118 supplementary text. These traits included lipids, micronutrients, hormones, metabolites, and  
119 enzymes.

120

### 121 **Genetic correlation**

122 Genetic correlation between each psychiatric and biochemical trait was estimated using linkage  
123 disequilibrium score regression (LDSR) (7), with summary statistic cleaned ('munged') to  
124 contain around one million HapMap 3 SNPs outside the major histocompatibility complex

125 (MHC) with minor allele frequency  $> 0.05$  for consistency (<https://github.com/bulik/ldsc>).  
126 Briefly, LDSR estimates genetic covariance by regressing SNP-wise  $\chi^2$ , the product of the  
127 marginal SNP effects from both traits ( $Z_1 Z_2$ ), on its LD score, which is an estimate of total LD  
128 existing with that SNP. Trait heritabilities are utilised to normalise the genetic covariance to  
129 obtain genetic correlation ( $r_g$ ). A key advantage of LDSR is that sample overlap only affects  
130 the LDSR intercept and not the slope, meaning we can accurately estimate  $r_g$  between UKBB  
131 biochemical GWAS and psychiatric GWAS with UKBB samples included. We used the  
132 Bonferroni method to correct for the fifty traits tested. One biochemical trait was excluded  
133 from further analysis, Apolipoprotein B, as it exhibited negative heritability within the block  
134 jackknifing procedure to estimate the  $r_g$  standard error in some instances. The resulting 49 x  
135 10 matrix of LDSR  $r_g$ , divided by its standard error to obtain  $Z$ , was subjected to a latent  
136 clustering method, finite Gaussian mixture modelling (GMM), with the mclust R package  
137 version 5.4.6 (26). We selected the most parsimonious clustering configuration based on  
138 parametrisation of the covariance matrix utilising the largest Bayesian Information Criterion  
139 (BIC) value.

140

#### 141 **Biochemical polygenic scoring in a severe cognitive deficit subtype of schizophrenia**

142 We sought to further investigate biochemical traits displaying psychiatric genetic correlation  
143 and examine their relevance to the clinical dimensions of psychiatric disorders. Specifically,  
144 we considered the heterogeneity of cognitive impairment observed in schizophrenia, wherein  
145 deficits often manifest before the first psychotic episode and are highly variable in their  
146 presentation throughout clinical course (27,28). We considered biochemical traits that were  
147 genetically correlated with either schizophrenia or cognition after the application of multiple  
148 testing correction and interrogated their relationship with severe cognitive deficit in a cohort  
149 of schizophrenia cases from the Australian Schizophrenia Research Bank (ASRB) cohort. The

150 use of these data was approved by the University of Newcastle Human Research Ethics  
151 Committee (HREC) and the ASRB (28–31). Previously, Green *et al.* utilised multidimensional  
152 Grade of Membership (GoM) clustering with nine cognitive measures to derive subgroups of  
153 cognitive performance in the ASRB (28). The most parsimonious configuration were two  
154 clusters of schizophrenia cases termed cognitive deficit (CD), with more pervasive cognitive  
155 impairment, and cognitively spared (CS), displaying intermediate cognitive performance  
156 relative to CD cases and healthy controls. Polygenic scores (PGS) were constructed for the 25  
157 biochemical traits correlated with either schizophrenia or cognitive ability in a genotyped  
158 subset of the ASRB with schizophrenia cases subtyped as CD or CS (N = 391, Supplementary  
159 materials). The full details of this cohort and the generation of PGS is described in the  
160 supplementary text. We tested the association of each biochemical PGS with CD status using  
161 binomial logistic regression covaried for sex and the first three SNP-derived principal  
162 components (Supplementary Materials). The variance explained (Nagelkerke's  $R^2$ ) in the full  
163 model with the PGS versus the null (covariates and intercept only) model, was converted to  
164 the liability scale assuming a population prevalence for CD of 0.33% (32). The population  
165 prevalence for CD is somewhat arbitrary, however, given the population prevalence of  
166 schizophrenia is around 0.7%, and 43% of this portion of the schizophrenia cases in the ASRB  
167 cohort was subtyped as CD, we believe this was an appropriate value to select. A polygenic  
168 score for general cognitive ability and a schizophrenia polygenic risk score (PRS) was also  
169 derived in this cohort for comparison (Supplementary Materials).

170

### 171 **Latent causal variable models**

172 Genetic correlation may reveal important insights into shared biology between two traits,  
173 however, this should not be interpreted as implying a causal relationship in either direction. To  
174 evaluate evidence for a causal relationship, we implemented the latent causal variable (LCV)

175 model to estimate genetic causality between traits, as outlined extensively elsewhere (9,33).  
176 The LCV framework leverages the bivariate genome-wide distribution of marginal SNP effects  
177 on both traits to estimate *partial genetic causality*. Specifically, the LCV assumes a latent  
178 variable,  $L$ , mediates the genetic correlation between the traits, and tests the strength of the  
179 correlation of each trait with  $L$ . The mixed fourth moments (cokurtosis) of marginal effect sizes  
180 for each trait ( $Z_1, Z_2$ ) are compared to evaluate the proportionality of effects on either trait. The  
181 main output of the LCV model is the posterior mean genetic causality proportion ( $\widehat{GCP}$ ),  
182 whereby  $\widehat{GCP} > 0$  implies partial genetic causality of trait one on trait two, and *vice versa*. In  
183 other words, given  $\widehat{GCP} > 0$ , then trait one SNP effects ( $Z_1^2$ ) tend to be proportionally large on  
184 trait two ( $Z_1Z_2$ ), such that  $|E(Z_1^2 Z_1Z_2)| \geq |E(Z_2^2 Z_1Z_2)|$ . As in LDSR, the LDSR intercept  
185 is utilised here to guard against inflation due to sample overlap. We defined *partial genetic*  
186 *causality* using the recommended threshold of a significantly non-zero  $|\widehat{GCP}| > 0.6$ , as this was  
187 shown by O'Connor and Price in simulations to guard against false positives (9). An LCV  
188 model was constructed for all genetically correlated psychiatric-biochemical trait pairs. Weak  
189 GCP estimates close to zero for genetically correlated traits imply that their relationship is  
190 potentially mediated by horizontal pleiotropy, whereby there are shared pathways, but the two  
191 traits do not likely exhibit vertical pleiotropy by acting within the same pathway. We also  
192 attempted to replicate the observed  $\widehat{GCP}$  using a non-UKBB biochemical GWAS (34–37). It  
193 should be noted that the posterior mean  $\widehat{GCP}$  is not an estimate of the magnitude of any  
194 potential causal relationship and should not be interpreted as such – rather it evaluates the  
195 strength of evidence for a putative causal relationship using genome-wide SNP effects. The  
196 scripts to construct an LCV model are available from (<https://github.com/lukejconnor/LCV>).  
197  
198  
199



## 200 **Mendelian randomisation**

201 C-reactive protein (CRP) exhibited strong evidence of partial genetic causality on multiple  
202 psychiatric disorders, and thus, we sought to estimate the magnitude of this causal relationship  
203 using univariable and multivariable Mendelian randomisation (MR). A detailed description of  
204 the MR methodology in this study is provided in the supplementary materials. MR is different  
205 from the LCV approach in that it leverages independent SNPs strongly associated with trait  
206 one (the exposure trait) as instrumental variables (IVs) to estimate the effect of the exposure  
207 on an outcome. The theoretical justification for using SNPs as IVs has been discussed  
208 extensively previously (8,38). We estimated the total effect of CRP on each disorder using  
209 independent genome-wide significant SNPs from a smaller non-UKBB GWAS as sample  
210 overlap between exposure and outcome can bias MR estimates (Supplementary Materials) (34).  
211 The  $F$ -statistic for IVs for this CRP GWAS was sufficiently strong ( $F$ -statistic  $> 10$ ), as  
212 reported previously (34).

213

214 Our primary model was an inverse-variance weighted effect (IVW) estimator with  
215 multiplicative random effects, which assumes all IVs are valid and is less biased by  
216 heterogeneity than a fixed-effects IVW estimator (8). Whilst the IVW estimator is generally  
217 considered the most well-powered approach, the assumption that all IVs are valid is probably  
218 unrealistic in practice. As a result, we implemented a series of models which make different  
219 underlying assumptions regarding IV validity. Specifically, median based estimators which  
220 assume the majority of IVs are valid (39); a weighted mode estimator and a contamination  
221 mixture model, that both assume out of groups of IVs having the same asymptotic estimate,  
222 the largest group will be comprised of valid IVs (plurality valid) (40,41); and MR-Egger, which  
223 includes a non-zero intercept as a test of the average pleiotropic effect and assumes that there  
224 is no significant correlation between direct IV effects on the outcome and genetic association

225 of IVs with the exposure (Instrument Strength Independent of Direct Effect (InSIDE)  
226 assumption) (42). As recommended by Bowden *et al.*, we ensured that the  $I^2$  statistic of IV-  
227 exposure effects exceeded 0.9, as this assesses the relative strength of the no-measurement  
228 error assumption, and thus, the suitability of using an MR-Egger model (43). We also tested  
229 the effect of using robust regression and penalised estimates for heterogeneity on the IVW,  
230 median, and Egger regression estimates (44). Evidence of horizontal pleiotropy and outliers  
231 were further investigated by testing heterogeneity in the IV/exposure-outcome effects (45),  
232 performing a leave-one-IV out analysis (38), testing for a non-zero MR Egger intercept (42),  
233 and an MR PRESSO test of global pleiotropy (also related to heterogeneity) (46). Furthermore,  
234 we also tested whether there was evidence of a causal effect in the reverse direction (psychiatric  
235 disorder as exposure), although MR estimates with binary exposures should be treated  
236 cautiously, as described elsewhere (47,48). Given only approximately 2,000,000 SNPs were  
237 available in the non-UKBB CRP GWAS utilised, we utilised the more deeply imputed UKBB  
238 CRP GWAS as the outcome here, although these results could therefore be inflated by sample  
239 overlap for AN and MDD.

240  
241 Multivariable MR (MVMR) was then performed to evaluate the direct effect of CRP on each  
242 psychiatric outcome tested when conditioned on BMI and interleukin six (IL-6) signalling,  
243 which are both postulated to be closely functionally related to circulating CRP (Supplementary  
244 Text) (49,50). MVMR assumes that IVs are strongly associated with at least one exposure, and  
245 therefore, SNPs were chosen which were genome-wide significant for at least one phenotype.  
246 We constructed an IL-6 and BMI multivariable model separately – that is CRP conditioned on  
247 circulating IL-6 and its receptor (IL6R), and CRP conditioned on BMI, as well as BMI and IL-  
248 6R. The strength of the IVs in each multivariable model was assessed using a two-sample  
249 conditional  $F$  statistic – which tests whether the IVs strongly predict each exposure, conditional

250 on the other exposures in the model (51,52). When an  $F$  statistic  $> 10$  could not be achieved,  
251 we relaxed the SNP inclusion threshold to represent suggestive significance in the GWAS  
252 ( $P_{\text{GWAS}} < 1 \times 10^{-5}$ , Supplementary Text). We compared direct estimates for each exposure using  
253 four different MVMR models – an IVW MVMR estimator, a median based MVMR estimator,  
254 an Egger regression based MVMR estimator, and a regularisation approach whereby LASSO  
255 type penalisation is applied to shrink intercept terms corresponding to IVs predicted as valid  
256 (MVMR-LASSO) (53). Given that CRP was genetically correlated with several psychiatric  
257 GWAS, genetic correlation may result in bias in MR estimates (9). However, MR is a valuable  
258 extension to the LCV model as it allows for specification of several different assumptions about  
259 IV validity and facilitates the estimate of total (univariable MR) and direct (MVMR) effects.  
260 The MR analyses were performed using the following packages in R version 3.6.0 –  
261 TwoSampleMR v 0.5.5 (54), MendelianRandomization v 0.5 (55), MRPRESSO v 1.0 (46),  
262 and MVMR v 0.3 (51).

263

## 264 **Genetic overlap between C-reactive protein and schizophrenia**

265 We investigated whether any of the lead SNPs (genome-wide significant) reported in the PGC3  
266 SZ GWAS were also associated with CRP ( $P < 5 \times 10^{-8}$ ). For overlapping genome-wide  
267 significant signals, we tested whether there was a shared causal variant or different causal  
268 variants underlying these loci, assuming a single causal variant, using the *coloc* package  
269 colocalisation method (56). Moreover, we utilised  $\rho$ -HESS  
270 (<https://github.com/huwenboshi/hess>) to estimate local genetic covariance between SZ and  
271 CRP, as opposed to a genome-wide estimate by LDSC, with local genetic covariance ( $\rho_{g,local}$ )  
272 calculated for munged HapMap3 SNPs in around 1,600 approximately independent LD blocks  
273 outside the MHC (57,58). Genes within the five LD blocks with the most statistically  
274 significant  $\rho_{g,local}$  were subjected to pathway analysis using g:Profiler

275 (<https://biit.cs.ut.ee/gprofiler/gost>) (59). We derived an estimate of genetic correlation ( $r_{g,local}$ )  
276 by dividing  $\rho_{g,local}$  by the product of the square roots of CRP and SZ local heritability per LD  
277 block, respectively.

278

### 279 **Downstream effects of C-reactive protein**

280 We investigated the downstream effect of CRP on circulating levels of 3284 proteins in blood  
281 using MR (60). We used the larger UKBB CRP GWAS to select IVs to maximise power. The  
282 principal MR model was the IVW estimator with multiplicative random effects to maximise  
283 power. Proteins which demonstrated at least nominal association with CRP levels after multiple  
284 testing correction ( $FDR < 0.1$ ) were investigated for protein-protein interaction and  
285 overrepresentation in biological pathways using STRING v 11.0 (61).

286

287

288

289

290

291

292

293

294

295

296

297

298

299

300 **RESULTS**

301 **Widespread genetic correlation between blood-based biomarkers and psychiatric traits**

302 We tested the genetic correlation between a panel of blood-based biomarkers and 10  
 303 psychiatric GWAS using LDSR. Interestingly, we found that 61% (N = 30) of the biochemical  
 304 traits tested were significantly correlated with at least one psychiatric trait after multiple-testing  
 305 correction, with every psychiatric trait exhibiting a significantly non-zero biochemical  
 306 correlation after correction except for Tourette’s syndrome (Figure 1a, Supplementary Tables  
 307 2 – 11) The most significantly correlated biomarker for each trait is outlined in table 1.

308

309 **Table 1: The most significant genetic correlation between each trait and a biochemical**  
 310 **GWAS**

Biochemical trait	Psychiatric trait <sup>1</sup>	$r_g^2$	SE	P
High light scatter reticulocyte percentage	ADHD	0.256	0.033	4.58 x 10 <sup>-15</sup>
High light scatter reticulocyte count	OCD	-0.212	0.046	3.37 x 10 <sup>-6</sup>
C-reactive protein	AN	-0.286	0.038	9.76 x 10 <sup>-14</sup>
Vitamin D	ASD	-0.177	0.047	2 x 10 <sup>-4</sup>
Creatinine	BIP	-0.106	0.027	7.23 x 10 <sup>-5</sup>
Leukocyte count	Cognition	-0.198	0.024	2.66 x 10 <sup>-16</sup>
Leukocyte count	MDD	0.155	0.025	9.77 x 10 <sup>-10</sup>
Leukocyte count	PTSD	0.225	0.043	1.37 x 10 <sup>-7</sup>
Lymphocyte count	SZ	0.075	0.017	1.52 x 10 <sup>-5</sup>
Lymphocyte count	TS	-0.093	0.039	0.017

311 <sup>1</sup>Psychiatric GWAS: attention/deficit hyperactivity disorder (ADHD), anorexia nervosa (AN), autism  
 312 spectrum disorder (ASD), bipolar disorder (BIP), major depressive disorder (MDD), obsessive  
 313 compulsive disorder (OCD), post-traumatic stress disorder (PTSD), schizophrenia (SZ), and Tourette’s  
 314 syndrome (TS).

315  $^2r_g$  is the estimate of genetic correlation from LDSR

316

317 There was clear evidence of biomarkers with divergent genetic correlations between different  
318 psychiatric phenotypes – for instance, CRP, alanine aminotransferase (ALT), and sex-hormone  
319 binding globulin (SHBG, Figure 1b). In the case of CRP, it displayed a negative correlation  
320 after correction with OCD, AN, and cognition, as well as a trend towards a negative correlation  
321 with schizophrenia ( $P = 1.7 \times 10^{-3}$ ), whilst its correlation with PTSD, MDD, and ADHD was  
322 strongly positive. These data provide some support to recent cohort studies, including lower  
323 CRP observed in patients with eating disorder (62), whilst elevated CRP was associated with  
324 ADHD (63). Notably, this contradicts previous observational estimates of elevated CRP in  
325 schizophrenia (64). Moreover, there were 14 biochemical traits which were only correlated  
326 after multiple testing correction with two or fewer psychiatric GWAS. A few such of examples  
327 of these more specific correlations included albumin and ADHD ( $r_g = -0.151$ ), mean  
328 corpuscular volume and AN ( $r_g = 0.087$ ), mean sphered cell volume and SZ ( $r_g = 0.06$ ), and  
329 creatinine with BIP and SZ (SZ:  $r_g = -0.07$ , BIP:  $r_g = -0.106$ ).

330

331 We further investigated the relationship between the profile of 49 LDSR biochemical Z scores  
332 for each psychiatric trait. We observed strong positive and negative correlations between the  
333 trait-wise LDSR biochemical Z for each trait, which we term the *biochemical correlation*  
334 *profile* (Figure 1c). For instance, the ADHD biochemical correlation profile demonstrates large  
335 magnitude positive correlations with ASD, MDD, and PTSD but negative correlations with  
336 OCD, AN, and Cognition. This can be interpreted as traits which tend to be positively  
337 correlated with ADHD are also positively correlated with ASD, MDD, and PTSD and *vice*  
338 *versa* for OCD, AN, and Cognition. These relationships were further interrogated by subjecting  
339 the 10 biochemical correlation profiles to finite Gaussian mixture modelling (GMM, Figure

340 1d). We observed five components (clusters) with diagonal distribution, variable volume, and  
341 equal shape as the most parsimonious parameterisation of the covariance matrix  
342 (Supplementary Table 12). The biochemical correlation profile LDSR  $Z$  within each cluster are  
343 plotted in figure 1e. Briefly, the first component was composed of a series of traits with  
344 discordant correlations between the disorders, such as CRP, ALT, and glycaeted haemoglobin  
345 (HbA1c), whilst the second and third component were a diverse set of biomarkers with more  
346 similar LDSR  $Z$  across the psychiatric disorders tested. Component four was notable as it was  
347 solely composed of reticulocyte (immature erythrocytes) related traits, which analogous to  
348 component one was quite discordant in its correlation profiles. The fifth and final component  
349 was composed of other erythrocytic related traits, however, the differences between disorders  
350 were less marked than component four. Taken together, this demonstrates that groups of  
351 biomarkers tend to have similar relationships with different psychiatric traits.

352

353

354

355

356

357

358

359

360

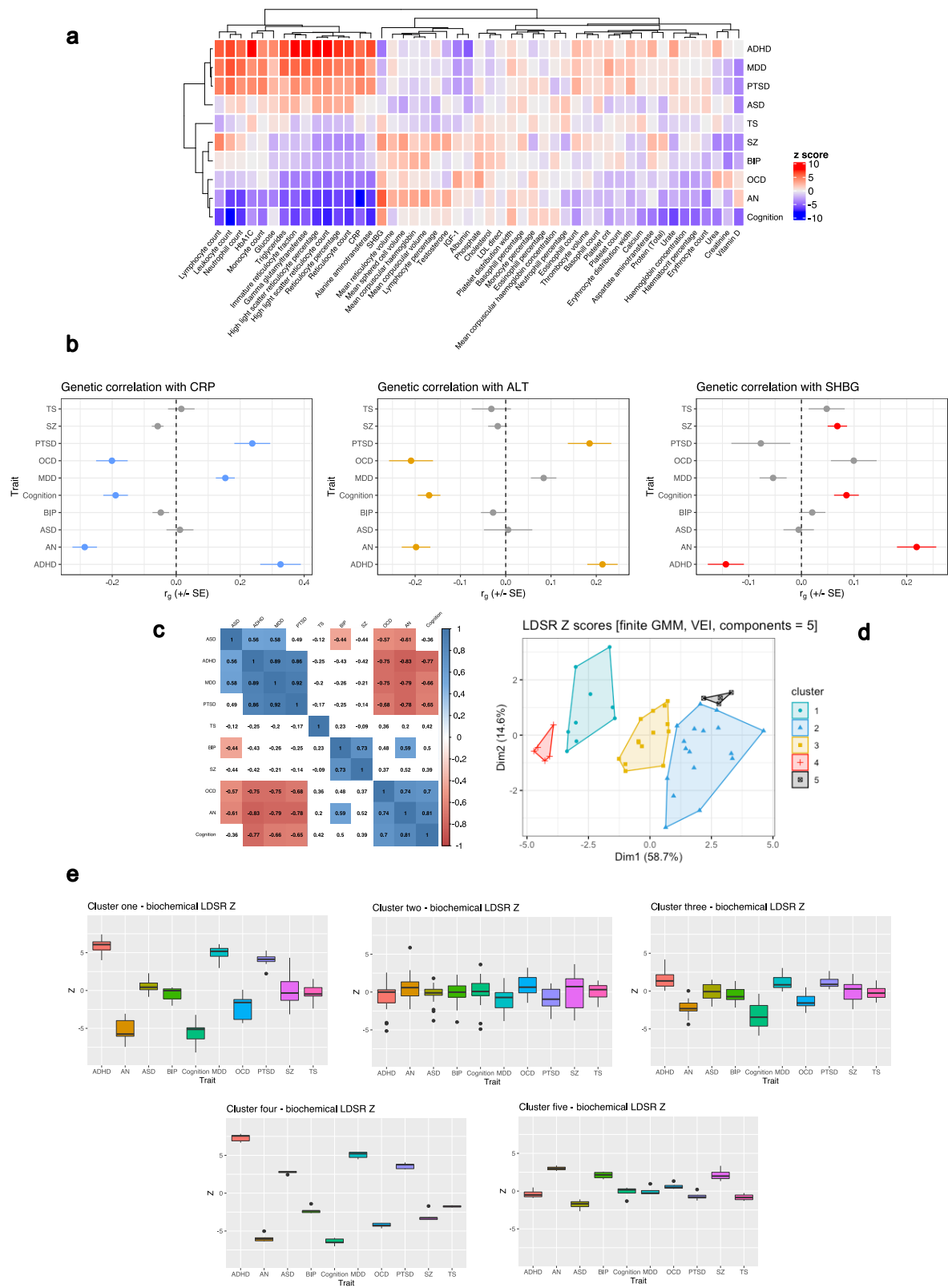
361

362

363

364

365  
366  
367  
368  
369  
370  
371  
372  
373  
374  
375  
376  
377  
378  
379  
380  
381  
382  
383  
384  
385





386 **Figure 1. Genetic correlation between blood-based biomarkers and psychiatric**  
387 **GWAS. (a)** Heatmap of LDSR correlation  $Z$  scores ( $r_g$ /standard error) between each  
388 psychiatric trait and 49 biochemical GWAS. The psychiatric and biochemical traits  
389 are grouped on the  $x$  and  $y$  axes, respectively, by hierarchical clustering using Pearson's  
390 distance. **(b)** Examples of biochemical traits with evidence of discordant genetic  
391 correlations amongst the different psychiatric phenotypes. C-reactive protein (CRP),  
392 alanine aminotransferase (ALT), and sex-hormone binding globulin (SHBG) are  
393 presented for illustration. The forest plot denotes the LDSR  $r_g$  with its standard error  
394 representing the confidence bars. Traits highlighted in blue, orange, and red, for CRP,  
395 ALT, and SHBG, respectively, were significantly correlated after the application of  
396 multiple testing correction. **(c)** Correlation matrix (Pearson) of LDSR  $Z$  between each  
397 trait, correlation estimates that survive correction for the number of tests performed  
398 are highlighted. **(d)** Components of biochemical LDSR  $Z$  scores derived using finite  
399 Gaussian mixture modelling (GMM) – the optimal parametrisation of the variance-  
400 covariance matrix was five components with diagonal distribution, variable volume,  
401 and equal shape (VEI). The components are plotted relative to their contribution to  
402 the first and second principal component of the LDSR  $Z$  matrix. **(e)** Box-and-whisker  
403 plots of the LDSR  $Z$  for each disorder composed of traits assigned to each of the five  
404 components derived from the GMM procedure.

405

406

407

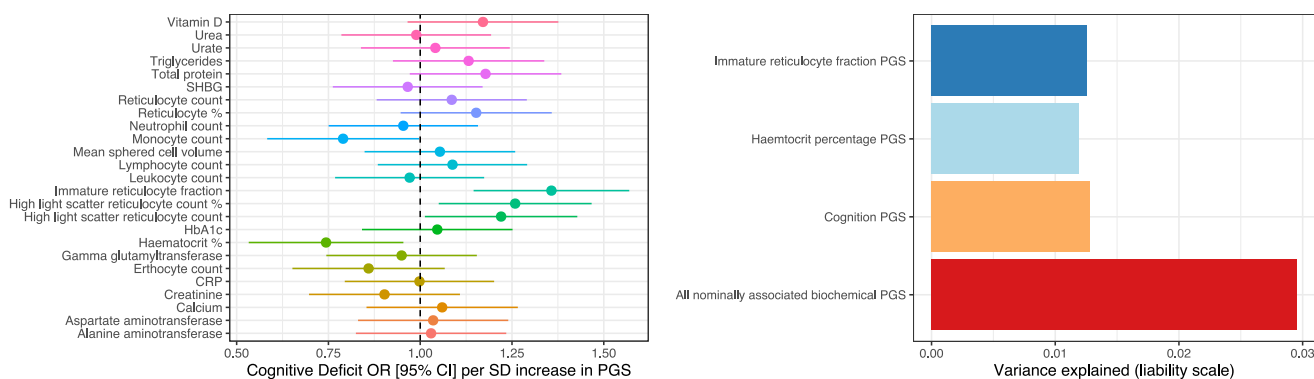
408

409

410 **Genetically proxied biochemical measures were associated with a severe cognitive**  
411 **deficit schizophrenia subtype**

412 We tested the association between 25 genetically proxied biomarkers (polygenic scores – PGS)  
413 that were correlated with either the schizophrenia or general cognitive ability GWAS and a  
414 severe cognitive deficit subtype of schizophrenia (Cognitive Deficit - CD) and a subset of cases  
415 with less marked impairment (Cognitively Spared – CS). There were two biochemical PGS  
416 that displayed a relatively significant association with CD status – haematocrit percentage and  
417 immature reticulocyte fraction (Figure 2, Supplementary Table 13). Each standard deviation  
418 increase in the immature reticulocyte fraction PGS was associated with a 35.7% (95% CI:  
419 14.5%, 56.9%,  $P = 4.72 \times 10^{-3}$ ,  $q = 0.07$ ) increase in the odds of severe cognitive deficit.  
420 Conversely, genetically proxied haemtocrit percentage exerted a protective effect – OR = 0.744  
421 [95% CI: 0.533, 0.954],  $P = 5.82 \times 10^{-3}$ ,  $q = 0.07$ . We emphasise that these signals only survive  
422 multiple testing correction using a lenient false-discovery rate (FDR) threshold of 10%,  
423 however, given the small sample size of this cohort, we believe that these findings remain  
424 noteworthy. Immature reticulocyte fraction was negatively correlated with cognition, with a  
425 trend towards a negative relationship with schizophrenia as well. Interestingly, haemtocrit  
426 percentage was also negatively correlated with cognition, however, there was a depletion of  
427 haemtocrit percentage alleles amongst CD vs CD schizophrenia cases, suggesting a more  
428 complex relationship may be present. Both the haemtocrit and reticulocyte fraction PGS  
429 explained around 1% of phenotypic variance in CD on the liability scale, which is similar to a  
430 PGS for general cognitive ability (Figure 2). A model constructed with all nominally CD-  
431 associated PGS ( $P < 0.05$ ) explained almost 3% in phenotypic variance. There was a non-  
432 significant trend of enrichment of schizophrenia PRS ( $P = 0.054$ ) in CD. Whilst these values  
433 are modest, it does suggest that the genetic architecture of biochemical traits is correlated with  
434 the severity of cognitive impairment in schizophrenia.

435



436

437 **Figure 2. The association between biochemical polygenic scores and a severe**  
 438 **cognitive deficit subtype of schizophrenia.** Left panel is a forest plot of the association  
 439 (odds ratio with 95% confidence interval) between a standard deviation increase in each  
 440 polygenic score (PGS) a severe cognitive deficit (CD), relative to schizophrenia cases  
 441 with less marked impairment (CS). The right panel is the variance explained on the  
 442 liability scale (Nagelkerke's  $R^2$ , assuming an 0.33% CD population prevalence) for  
 443 biochemical and a general cognitive ability PGS.

444

445 **Strong evidence of partial genetic causality between blood-based biomarkers and**  
 446 **neuropsychiatric illness**

447 A latent causal variable (LCV) model was constructed between each significantly correlated  
 448 biochemical-psychiatric trait pair to estimate partial genetic causality ( $|\widehat{GCP}| > 0.6$  as strong  
 449 evidence of partial genetic causality). We can then infer the consequence of the partial genetic  
 450 causality of one trait on another using the sign of the genetic correlation. There were five  
 451 instances where we found strong evidence of a potential causal relationship, with all of them  
 452 suggesting an effect of the biochemical measure on the psychiatric trait, rather than *vice versa*  
 453 (Table 2, Supplementary table 14). These were as follows: glucose on ADHD ( $\widehat{GCP} = 0.64$ ),  
 454 CRP on AN ( $\widehat{GCP} = 0.92$ ), urate on cognition ( $\widehat{GCP} = 0.88$ ), CRP on MDD ( $\widehat{GCP} = 0.62$ ), and

455 CRP on OCD ( $\widehat{GCP} = 0.75$ ). It is important to emphasise that these posterior mean  $\widehat{GCP}$  are not  
456 magnitudes of causal effect and only imply that there is a causal relationship between the  
457 biochemical traits and the psychiatric phenotype. Given the sign of the genetic correlation, we  
458 can likely infer that glucose may increase the risk of ADHD and urate could have a deleterious  
459 effect on general cognitive function. As outlined in a previous section, CRP has highly  
460 divergent correlations, and these data coupled with the LDSR further support a protective effect  
461 on AN and OCD, whilst it is likely risk increasing for MDD. SZ did not quite survive multiple-  
462 testing correction for a genetic correlation with CRP, however, given previous evidence of a  
463 protective effect of CRP on SZ from MR studies (65–67), we also constructed an LCV model  
464 between CRP and SZ and found moderate support for this relationship ( $\widehat{GCP} = 0.56$ ,  $SE = 0.23$ ,  
465  $P = 5.11 \times 10^{-6}$ ). Given the genetic correlation is only small it is less likely that previous MR  
466 studies were unduly biased by genetic correlation. In addition, we also observed an unusual  
467 phenomenon in the HbA1c and PTSD model, whereby the posterior mean  $\widehat{GCP}$  was strongly  
468 positive ( $\widehat{GCP} = 0.76$ ), implying an effect of HbA1c on PTSD, whilst its  $Z$  score was negative  
469 ( $Z = -6.51$ ), which signifies the opposite. As described in the supplementary material and  
470 supplementary figure 1, we found that these conflicting data was likely attributable to a rare  
471 violation of the LCV model assumptions, whereby the mixed fourth moments had opposite  
472 signs to each other and the genetic correlation. This could be explained by certain SNPs having  
473 highly divergent effects from the rest of the genome-wide signal. Moreover, there were two  
474 other trait pairs that trended towards partial genetic causation ( $|\widehat{GCP}| > 0.5$ ) but did not exceed  
475 the stringent 0.6 threshold. These were SHBG on cognition ( $\widehat{GCP} = 0.55$ ) and triglycerides on  
476 OCD ( $\widehat{GCP} = 0.55$ ). We then sought to replicate the LCV findings by utilising different  
477 previously published GWAS for glucose, urate, CRP, and HbA1c. Despite smaller sample  
478 sizes, we found relatively consistent GCP estimates which supported the above models using  
479 the UKBB GWAS (supplementary table 14). The exception to this was HbA1c, which did not

480 show strong evidence of partial genetic causality ( $\widehat{GCP} = 0.13$ ) using a smaller sample size  
 481 GWAS by Wheeler *et al.* (37).

482

483 **Table 2: Strong evidence of partial genetic causality of a biochemical measure on a**  
 484 **psychiatric trait**

Biochemical trait	Psychiatric trait <sup>1</sup>	$GCP^2$	$SE$	$P^3$	$r_g$
Glucose	ADHD	0.64	0.28	0.035	0.134
C-reactive protein	AN	0.92	0.07	$5.95 \times 10^{-56}$	-0.286
C-reactive protein	MDD	0.62	0.21	$1.57 \times 10^{-12}$	0.154
C-reactive protein	OCD	0.75	0.16	$2.07 \times 10^{-18}$	-0.201
Urate	Cognition	0.88	0.09	$5.27 \times 10^{-114}$	-0.1047

485 <sup>1</sup>Psychiatric GWAS: attention/deficit hyperactivity disorder (ADHD), anorexia nervosa (AN), major  
 486 depressive disorder (MDD), and obsessive-compulsive disorder (OCD).

487 <sup>2</sup>The posterior mean genetic causality proportion (GCP), with its accompanying posterior standard error  
 488 in the adjacent column.

489 <sup>3</sup> $P$  value which tests whether the GCP estimate is significantly different from zero.

490

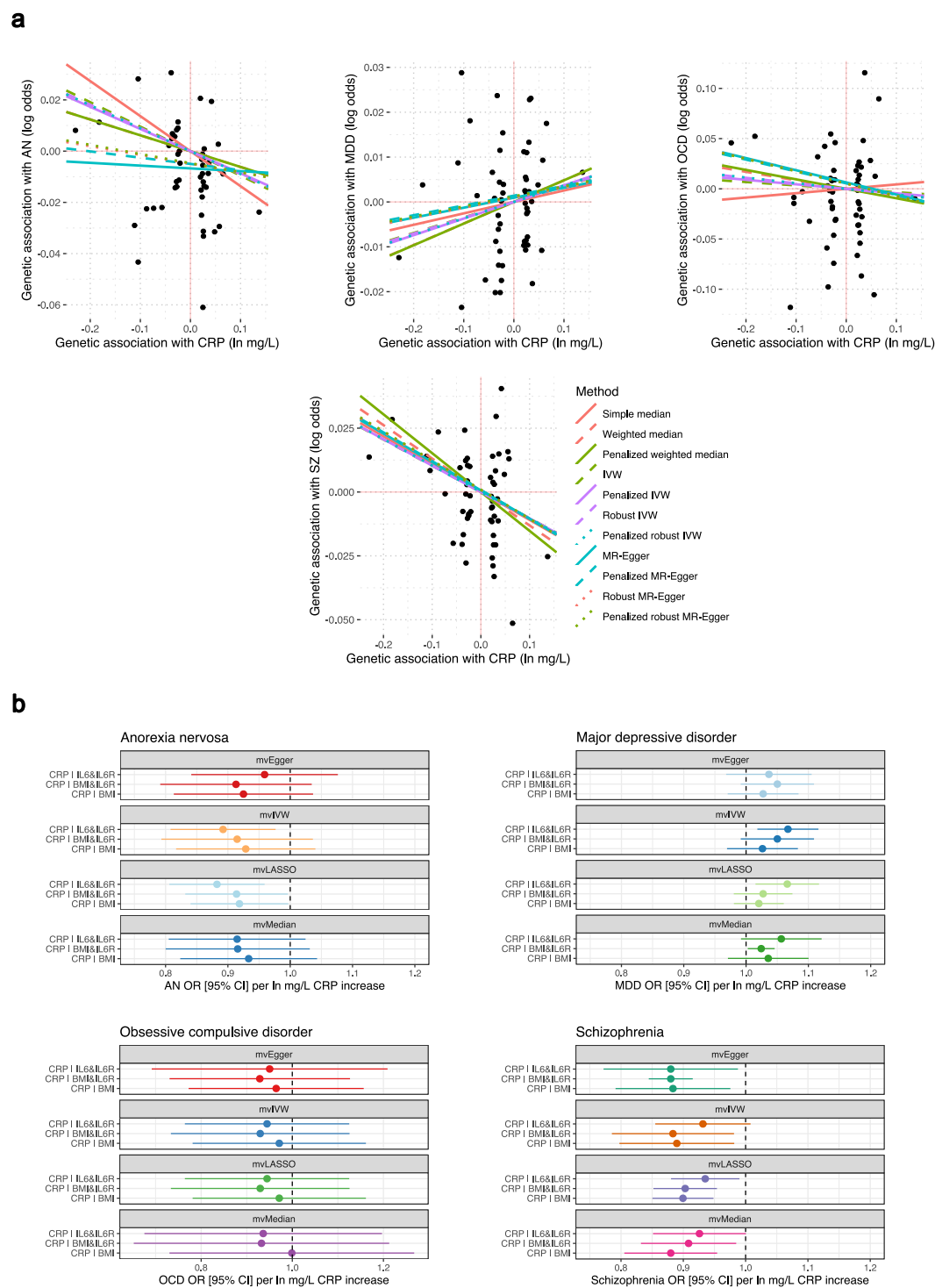
491 **C-reactive protein levels exert a direct protective effect on schizophrenia conditioned on**  
 492 **body mass index and interleukin-6 signalling**

493 CRP displayed strong evidence of partial genetic causality on three psychiatric disorders, and  
 494 thus, we sought to further analyse these relationships by estimating total effects and direct  
 495 impact of CRP using univariable and multivariable Mendelian randomisation (MR),  
 496 respectively (Supplementary Tables 16-22). We included SZ in these analyses, due to evidence  
 497 from previous SZ GWAS that CRP exerts a protective effect on schizophrenia liability, as  
 498 discussed in the previous section. The CRP GWAS utilised here was drawn from a non-UKBB  
 499 cohort such that there was no sample overlap with the AN and MDD GWAS (Supplementary

500 Materials) (34). Using our primary model (IVW estimator with multiplicative random effects),  
501 we found evidence that a natural log transformed mg/L increase in CRP was associated with a  
502 statistically significant reduction in the odds of SZ (OR = 0.91 [95% CI: 0.85,0.98],  $P = 0.01$ )  
503 and AN (OR = 0.91 [95% CI: 0.83,0.99],  $P = 0.03$ ), which supports the LDSR inferred direction  
504 of the LCV relationship. Using a less conservative IVW estimator with fixed effects yielded a  
505 more precise estimate in both instances, as expected (CRP  $\rightarrow$  SZ  $P = 6.29 \times 10^{-5}$ , CRP  $\rightarrow$  AN  
506  $P = 9.79 \times 10^{-3}$ ). There was a trend towards an odds increasing effect of CRP on MDD ( $P =$   
507 0.19), whilst there was no indication of a reliable effect in the OCD model ( $P = 0.82$ ). It should  
508 be noted that as MR exploits independent (relative linkage equilibrium) genome-wide  
509 significant variants as IVs, as opposed to using genome-wide marginal effects in the LCV  
510 approach, and thus, a non-significant estimate from MR does not necessarily preclude the  
511 existence of a causal relationship, although LCV models with corresponding MR support  
512 would perhaps be viewed as stronger evidence. We discuss the sensitivity analyses for each of  
513 these univariable models in detail in the supplementary text. Briefly, the five MR tests deployed  
514 with different assumptions regarding IV validity (plurality valid, majority valid, and InSIDE  
515 assumption) had very similar point estimates (OR range: 0.88-0.91) and were all statistically  
516 significant for CRP  $\rightarrow$  SZ with the exception of the simple median ( $P = 0.07$ ). The CRP  $\rightarrow$  AN  
517 estimate across the different models were also directionally consistent, however, they were not  
518 statistically significant (except for some contamination mixture models with different  
519 prespecified standard deviation of invalid IVs), and thus, the total effect of CRP on AN by MR  
520 has comparatively weaker evidence compared to SZ. The effect of using robust, penalised, or  
521 robust penalised weights in the median, IVW, and Egger models was not marked for each of  
522 the CRP psychiatric models (Figure 3a, Supplementary Table 21). In the CRP  $\rightarrow$  SZ and CRP  
523  $\rightarrow$  AN model, the Egger intercept was not significantly different than zero (although there was  
524 a trend in the AN model,  $P = 0.07$ ), and thus, there was no strong statistical evidence of

525 confounding pleiotropy using this metric. However, there was evidence of heterogeneity  
526 between the IV ratio estimates for AN and SZ: the MR PRESSO global test of pleiotropy was  
527 significant and Cochran's  $Q$  statistic significant for AN and SZ, although both causal estimates  
528 remained statistically significant in the MR-PRESSO outlier corrected estimates  
529 (Supplementary table 19). Given the biological complexity of these phenotypes, heterogeneity  
530 does not necessarily imply confounding pleiotropy. Moreover, using a leave-one-out-analysis,  
531 we found evidence of one outlier IV in the SZ model, whilst there were three outlier SNPs in  
532 the AN model (Supplementary Table 20), although the effects of removing these IVs were  
533 relatively small. The outlier IV in the SZ model was also proximal to the CRP gene itself (IVW  
534  $P = 0.07$  when removed), meaning it is likely to influence SZ through CRP, rather than being  
535 indicative of confounding pleiotropy. Given the CRP estimates on AN and SZ remained  
536 significant removing outliers by MR PRESSO or through iterative single IV exclusion, it is  
537 less likely that horizontal pleiotropy fully explains these signals. There was also no evidence  
538 using a reverse MR model, with the psychiatric disorder as the exposure, that there were  
539 bidirectional effects, although these models are inherently underpowered and are best treated  
540 as a test of the null hypothesis only (Supplementary Table 22).

541



542

543

544

545

546

**Figure 3. Total and direct estimated effect of C-reactive protein on psychiatric illness. (a)** Total effect of CRP on each psychiatric outcome considered. Each point represents the IV-exposure vs IV-outcome effect. Trend lines are indicative of the slope of each MR method utilised. The outcomes plotted from left to right are AN,



547 MDD, OCD, and SZ. **(b)** Direct effect of CRP in multivariable MR models – the three  
548 models contained the following phenotypes as additional exposures: i) circulating  
549 interleukin 6 (IL6) and its receptor (IL6R), body mass index (BMI), and IL6R and  
550 BMI.

551

552 We sought to investigate the direct effect of circulating CRP on the above psychiatric  
553 phenotypes using multivariable Mendelian randomisation (MVMR) conditioning on IL-6  
554 signalling and BMI. We found that CRP exhibited a robust direct protective effect on  
555 schizophrenia conditioned on IL-6 signalling and BMI (Supplementary table 23, Figure 3b).  
556 For instance, using a multivariable IVW estimator, the direct effect of CRP on schizophrenia  
557 conditioned on BMI and IL-6R was analogous to the univariable IVW total estimate (OR =  
558 0.88 [95% CI: 0.79, 0.98],  $P = 0.01$ ). There was no evidence of an effect of BMI or IL-6  
559 signalling on schizophrenia conditioned on CRP. Similarly, the effect size of the CRP → AN  
560 MVMR models remained similar to that estimated in the univariable constructs (Figure 3b),  
561 however, these estimates were only statistically significant in a subset of the models  
562 (Supplementary table 23). As a result, the MR evidence for the direct protective effect of CRP  
563 on AN is comparatively weaker than the CRP → SZ model, as was seen in the univariable  
564 estimates. We also observed some evidence to suggest that IL-6 abundance exerts a protective  
565 effect on AN conditional on CRP and IL-6R, which was nominally non-zero in every MVMR  
566 model except for the median estimator (OR = 0.96 [95% CI: 0.93, 0.99] per unit increase in  
567 IL-6,  $P = 0.037$  – multivariable IVW-multiplicative random effects). Interestingly, whilst  
568 evidence for a direct effect of CRP on MDD conditioned on each variable set was weak (Figure  
569 3b, Supplementary Table 23), there was consistent evidence that elevated IL-6R was associated  
570 with increased odds of MDD conditioned on CRP and IL-6 or CRP and BMI. For example,  
571 each unit increase in blood IL-6R protein expression was estimated to increase the odds of

572 MDD by 2.7% [95% CI: 0.6%, 4.9%] conditioned on CRP and BMI. Finally, there was no  
573 evidence in the MVMR models to support the protective effect of CRP on OCD, however,  
574 there was evidence that increased BMI decreases the odds of OCD conditioned on CRP and  
575 IL-6 signalling (Supplementary Table 23). This BMI → OCD effect estimate was quite large,  
576 albeit with wide confidence intervals – OCD OR per SD increase in BMI conditioned on CRP  
577 and IL-6R = 0.52 [95% CI: 0.14, 0.91],  $P = 1 \times 10^{-3}$ .

578

579 **C-reactive protein displays overlapping association signals with schizophrenia and may**  
580 **have downstream impacts on the brain**

581 There were five schizophrenia GWAS lead SNPs ( $P < 5 \times 10^{-8}$ ), that also obtained genome-  
582 wide significance in the UKBB CRP GWAS. Colocalisation analyses using the European only  
583 subset of the SZ GWAS demonstrated strong evidence for the association of three of these loci  
584 with both SZ and CRP, however, there was likely a different underlying causal variant  
585 (Supplementary Table 24, Supplementary Text, Supplementary Figure 2). Local genetic  
586 correlation estimates with  $\rho$ -HESS demonstrated that 13 of the LD block partitions of the  
587 human genome displayed non-zero local covariance between CRP and SZ (Supplementary  
588 Table 25, Supplementary Figure 3) after Bonferroni correction. Interestingly, five of these LD  
589 blocks with strong evidence of local genetic covariance were positive, and thus, for these  
590 regions of the genome SZ and CRP were positively correlated in contrast to the genome-wide  
591 estimate of nominal negative correlation. We investigated the pathways overrepresented for  
592 genes physically mapped to the LD blocks of the top five most significant  $r_{g,local}$  estimates  
593 (Supplementary Table 27). Interestingly, we found that *retinol metabolism* was the most  
594 significantly overrepresented gene-set after multiple testing correction, which is notable given  
595 evidence that retinoids play a role in the pathogenesis of SZ (30,68).

596

597 We also sought to investigate the downstream consequences of raised CRP. We estimated the  
598 effect of raised CRP on the expression of 3284 proteins in blood using univariable MR. Using  
599 a liberal FDR cut-off of 10%, we found that 95 proteins were putatively causally influenced by  
600 elevated CRP, with 45 of these proteins surviving a stricter FDR threshold of 5%  
601 (Supplementary Table 28). We emphasise that these analyses are exploratory in nature and we  
602 treat the effect sizes of the CRP effect on each protein largely as a test of the null hypothesis  
603 that the two are not associated. The vast majority of proteins prioritised using the IVW  
604 estimator were directionally consistent in the median, mode, and Egger sensitivity analyses  
605 (Supplementary Table 29). However, 20 of the FDR < 0.1 proteins were suggested to act in the  
606 opposite direction and causally influence CRP as the estimated variance explained by the IVs  
607 was significantly larger in the outcome than the CRP exposure, although this does not rule out  
608 bidirectional effects (Supplementary Table 30). We found that these proteins putatively  
609 influenced by CRP were enriched in several pathways including glycaemic signalling and  
610 lymphocyte biology (Supplementary Tables 31-33). Notably, there were neuronal pathways  
611 overrepresented with CRP-associated proteins – including, *axon guidance*, *dopaminergic*  
612 *synapse*, *neurogenesis*, *glial cell differentiation*, and *cholinergic synapse*. For example,  
613 dopaminergic and cholinergic synapse overrepresentations were driven by the three genes  
614 (*AKT1*, *AKT2*, and *AKT3*) that encode the RAC-alpha/beta/gamma serine/threonine-protein  
615 kinase complex, which was measured as a single entity in the protein study. Collectively, these  
616 data provide preliminary evidence that CRP may influence the expression of neuronally  
617 relevant proteins, and subsequent studies should seek to investigate these associations and their  
618 significance for different psychiatric phenotypes.

619

620

621

## 622 DISCUSSION

623 In this study, we investigated genetic correlation and causality between a diverse panel of  
624 biochemical traits and psychiatric disorders, as well as general cognitive ability and a cognitive  
625 deficit subtype of schizophrenia. Our data demonstrated that there is clear evidence of genetic  
626 overlap between blood-based measures and psychiatric phenotypes, as quantified by LDSR,  
627 which is likely indicative of shared variants and pathways that predispose to these traits.  
628 Interestingly, the distribution of biochemical-psychiatric correlations demonstrated traits often  
629 exhibited highly divergent correlations (different signs), as well as clusters of biochemical  
630 measures that tended to have similar psychiatric correlation profiles. For instance, we found  
631 that five reticulocyte traits clustered together (Figure 1e), and they tended to have opposing  
632 psychiatric correlations (strong positive correlation with ADHD, MDD, and PTSD, whilst  
633 negative correlations with AN, OCD, SZ, and cognition). The genetic architecture of  
634 reticulocyte related traits remains relatively uncharacterised, however, it is a highly polygenic  
635 trait that also has demonstrated genome-wide significant associations with rare non-  
636 synonymous variation in genes such as *SPTA1*, *E2F4*, and *IFRD2* (69,70). Future study should  
637 further investigate how the genetic factors which contribute to reticulocyte biology may also  
638 influence psychiatric traits. Given the LCV posterior mean GCP estimates between the  
639 genetically correlated reticulocyte traits and each psychiatric phenotype were low, it suggests  
640 the existence of horizontal rather than vertical pleiotropy.

641

642 A key advantage of our study is that we extended the findings from the LDSR models to  
643 estimate which biochemical-psychiatric trait pairs may represent causal relationships. We  
644 caution that all of these findings require validation in well-powered, replicated, randomised  
645 controlled trials to confirm that the causal effects do indeed exist. The putative effect of urate  
646 and glucose on cognition and ADHD, respectively, may have direct implications for drug

647 repurposing given that compounds which modulate these traits are readily available. Both of  
648 these relationships are also supported by previous observational data (71–73). Indeed, data  
649 from an incident cohort study which treated individuals with urate lowering compounds  
650 allopurinol and febuxostat demonstrated evidence of a risk decreasing effect on dementia,  
651 supporting the deleterious effect of urate on general cognitive function (74).

652

653 The inferred effect of CRP on different psychiatric disorders was particularly interesting given  
654 that there was evidence of an odds-decreasing effect on AN, OCD, and SZ, whilst the opposite  
655 is true for MDD. CRP is traditionally conceptualised as a biomarker of chronic inflammation;  
656 however, its biology is likely somewhat more complex given it is also implicated to play a  
657 direct role in pathogen response (75,76). Moreover, as reviewed by Del Giudice and  
658 Gangestad, CRP in its hepatically secreted pentameric isoform demonstrates some anti-  
659 inflammatory effects and may be a marker of other non-inflammatory states (77). In our study,  
660 we also provide evidence that CRP levels may also exert an effect on proteins with neurological  
661 significance, including proteins enriched in pathways relevant to psychiatric illness such as  
662 axon guidance. Moreover, we show for the first time the previously documented protective  
663 effect of CRP on SZ through MR is not likely attributable to the effect of BMI and IL-6  
664 signalling, which are closely related variables to CRP. Data from our study and previous  
665 examinations of the relationship between CRP and SZ through MR seemingly contradict  
666 previous observational evidence that CRP is elevated in SZ (64,78). If we assume that there is  
667 a causal effect, there are a number of explanations that could account for this, although all  
668 require further investigation. Firstly, previous observational studies that directly measured  
669 CRP in case/control cohorts could be confounded due to a variety of variables including  
670 lifestyle and general health, or even be caused by factors related to psychosis and/or  
671 schizophrenia itself. Whilst there was no evidence in this study using the LCV model or reverse

672 MR that SZ causally influences CRP levels, local significant estimates of positive and negative  
673 genetic correlation between SZ and CRP observed for several LD blocks suggests a complex  
674 interrelationship between these phenotypes may exist that warrants further study. Secondly,  
675 CRP itself may influence factors that impact the brain, directly or indirectly, and these factors  
676 may play a role in the pathogenesis of psychiatric illness. For instance, CRP was postulated in  
677 this study to causally upregulate the expression of the RAC-alpha/beta/gamma  
678 serine/threonine-protein kinase complex (*AKT1*, *AKT2*, and *AKT3*), with impaired signalling  
679 by these serine/threonine kinases implicated to dysregulate dopaminergic neurotransmission  
680 and downregulation of genetically predicted neuronal *AKT3* expression associated with SZ via  
681 a transcriptome-wide association study (23,79). Finally, given that infection has been  
682 associated with liability of SZ, the role of CRP in pathogen defence may contribute to its  
683 putative protective properties. Further study on the neurobiological consequences of CRP  
684 signalling and its role in SZ is warranted, particularly to reconcile the discrepancies between  
685 observational studies and MR.

686

687 The putative causal effect of CRP on AN was demonstrated in this study is, to our knowledge,  
688 a novel finding; however, it does support data from a recent longitudinal study which  
689 demonstrated that elevated CRP was associated with a protective effect on eating disorders  
690 (62), along with decreased measured CRP observed specifically in AN (80). It should be noted  
691 that whilst the LCV data supported strong partial genetic causality of CRP on AN, the MR  
692 evidence was less statistically significant, with some evidence in the MVMR that IL-6  
693 signalling may exert a protective effect on AN conditioned-on CRP. Inhibition of the IL-6  
694 pathway has been associated with weight gain which may be protective for AN (81).  
695 Furthermore, CRP likely is intertwined with other metabolic factors, including insulin  
696 signalling, which our group has previously shown through MR is also putatively protective for

697 AN (48). In MDD, we found some evidence to support that upregulation of the IL-6 receptor  
698 may be risk increasing conditioned on CRP and BMI, supporting preliminary data that  
699 blockade of IL-6R by agents like tocilizumab may improve depressive symptoms (82).  
700 However, data related to the anti-depressant qualities of tocilizumab are conflicting (83), and  
701 randomised control trials are warranted to further investigate repurposing opportunities for IL-  
702 6 inhibition in MDD. Finally, BMI demonstrated a quite robust protective effect on OCD  
703 conditioned on CRP and IL-6 signalling, in accordance with observational data that OCD is  
704 associated with reduced odds of obesity (84).

705

706 There are a number of important limitations that are central to the interpretation of the data in  
707 this study. Genetic correlations from LDSR likely reflect a shared underlying genetic  
708 architecture, however, this could be mediated by the relationship of the same genetic variants  
709 to another variable or variables (7). Despite this limitation, the existence of horizontal  
710 pleiotropy between traits is still informative as identifying genes which effect both psychiatric  
711 and biochemical traits, and further insight into the mechanisms, would likely refine our  
712 understanding of both traits. Moreover, the genetically informed causal inference approaches  
713 we implement in this study are subject to limitations regarding the data they are performed  
714 with and any biases therein, including potential effects of population stratification (85),  
715 selection bias (86), and the assumption of acyclicity. The LCV model is also fixed to be  
716 bivariate in nature, and thus, the effects of multiple mediators cannot be taken into account.  
717 We address this by constructing multivariable MR models such that direct effects are estimated  
718 conditioned on likely confounders, however, our selection of confounders is not exhaustive,  
719 and other unidentified factors may influence our findings. The UKBB sample is also composed  
720 of older individuals over the age of 40, and thus, more developmentally sensitive effects on the  
721 biochemical traits in question could not be assessed. Genetic variants are also sometimes

722 claimed to represent a lifetime effect on a particular variable, although caution is required in  
723 this inference given that factors like age may modulate the effect of a variant (87,88). We assert  
724 that although GWAS informed causal inference has a number of caveats and limitations it  
725 enables an important opportunity to prioritise biochemical traits which are putatively clinically  
726 relevant in psychiatry and inform future study into these traits.

727

## 728 **ACKNOWLEDGEMENTS**

729 The authors wish to acknowledge Dr Luke O'Connor for his insightful correspondence in  
730 relation to some of the LCV data in this study. This work was supported by a National Health  
731 and Medical Research Council (NHMRC) grant (1188493). M.J.C. is supported by an  
732 NHMRC Senior Research Fellowship (1121474), URL: <https://www.nhmrc.gov.au/>. The  
733 funders had no role in study design, data collection and analysis, decision to publish, or  
734 preparation of the paper.

735

## 736 **DISCLOSURES**

737 The authors declare no competing financial interests

738

## 739 **AUTHOR CONTRIBUTIONS**

740 W.R.R. conceived and designed the study with input from M.J.C. W.R.R. performed the  
741 primary analyses. M.P.G and D.J.K performed the rho-HESS analyses. J.R.A performed the  
742 SNP imputation in the ASRB cohort. M.J.C, V.J.C, and M.J.G contributed the ASRB cohort,  
743 as well as to critical interpretation of the results and drafting of the manuscript.

744

745

746



747 **REFERNECES**

- 748 1. Polderman TJC, Benyamin B, de Leeuw CA, Sullivan PF, van Bochoven A, Visscher PM,  
749 Posthuma D (2015): Meta-analysis of the heritability of human traits based on fifty  
750 years of twin studies. *Nat Genet* 47: 702–709.
- 751 2. Brainstorm Consortium, Anttila V, Bulik-Sullivan B, Finucane HK, Walters RK, Bras J, *et*  
752 *al.* (2018): Analysis of shared heritability in common disorders of the brain. *Science*  
753 360. <https://doi.org/10.1126/science.aap8757>
- 754 3. Cross-Disorder Group of the Psychiatric Genomics Consortium. Electronic address:  
755 [plee0@mg.harvard.edu](mailto:plee0@mg.harvard.edu), Cross-Disorder Group of the Psychiatric Genomics  
756 Consortium (2019): Genomic Relationships, Novel Loci, and Pleiotropic Mechanisms  
757 across Eight Psychiatric Disorders. *Cell* 179: 1469-1482.e11.
- 758 4. Reay WR, Cairns MJ (2020): Pairwise common variant meta-analyses of schizophrenia  
759 with other psychiatric disorders reveals shared and distinct gene and gene-set  
760 associations. *Transl Psychiatry* 10: 134.
- 761 5. Gamazon ER, Zwinderman AH, Cox NJ, Denys D, Derks EM (2019): Multi-tissue  
762 transcriptome analyses identify genetic mechanisms underlying neuropsychiatric  
763 traits. *Nat Genet* 51: 933–940.
- 764 6. Byrne EM, Zhu Z, Qi T, Skene NG, Bryois J, Pardini AF, *et al.* (2020): Conditional  
765 GWAS analysis to identify disorder-specific SNPs for psychiatric disorders. *Mol*  
766 *Psychiatry*. <https://doi.org/10.1038/s41380-020-0705-9>
- 767 7. Bulik-Sullivan B, Finucane HK, Anttila V, Gusev A, Day FR, Loh P-R, *et al.* (2015): An  
768 atlas of genetic correlations across human diseases and traits. *Nat Genet* 47: 1236–  
769 1241.
- 770 8. Burgess S, Butterworth A, Thompson SG (2013): Mendelian randomization analysis with  
771 multiple genetic variants using summarized data. *Genet Epidemiol* 37: 658–665.

- 772 9. O'Connor LJ, Price AL (2018): Distinguishing genetic correlation from causation across  
773 52 diseases and complex traits. *Nat Genet* 50: 1728–1734.
- 774 10. Chan MK, Guest PC, Levin Y, Umrانيا Y, Schwarz E, Bahn S, Rahmoune H (2011):  
775 Converging evidence of blood-based biomarkers for schizophrenia. *International*  
776 *Review of Neurobiology*, vol. 101. Elsevier, pp 95–144.
- 777 11. Lai C-Y, Scarr E, Udawela M, Everall I, Chen WJ, Dean B (2016): Biomarkers in  
778 schizophrenia: A focus on blood based diagnostics and theranostics. *World J*  
779 *Psychiatry* 6: 102–117.
- 780 12. Carvalho AF, Solmi M, Sanches M, Machado MO, Stubbs B, Ajnakina O, *et al.* (2020):  
781 Evidence-based umbrella review of 162 peripheral biomarkers for major mental  
782 disorders. *Transl Psychiatry* 10: 152.
- 783 13. Meduna LJ (1942): BIOCHEMICAL DISTURBANCES IN MENTAL DISORDERS: I.  
784 ANTI-INSULIN EFFECT OF BLOOD IN CASES OF SCHIZOPHRENIA. *Arch*  
785 *NeurPsych* 47: 38.
- 786 14. Kim JH, Kim JY, Lee J, Jeong GH, Lee E, Lee S, *et al.* (2020): Environmental risk  
787 factors, protective factors, and peripheral biomarkers for ADHD: an umbrella review.  
788 *The Lancet Psychiatry* 7: 955–970.
- 789 15. Masi A, Quintana DS, Glozier N, Lloyd AR, Hickie IB, Guastella AJ (2015): Cytokine  
790 aberrations in autism spectrum disorder: a systematic review and meta-analysis. *Mol*  
791 *Psychiatry* 20: 440–446.
- 792 16. Brown NC, Andreazza AC, Young LT (2014): An updated meta-analysis of oxidative  
793 stress markers in bipolar disorder. *Psychiatry Res* 218: 61–68.
- 794 17. Demontis D, Walters RK, Martin J, Mattheisen M, Als TD, Agerbo E, *et al.* (2019):  
795 Discovery of the first genome-wide significant risk loci for attention  
796 deficit/hyperactivity disorder. *Nat Genet* 51: 63–75.

- 797 18. Watson HJ, Yilmaz Z, Thornton LM, Hübel C, Coleman JRI, Gaspar HA, *et al.* (2019):  
798 Genome-wide association study identifies eight risk loci and implicates metabo-  
799 psychiatric origins for anorexia nervosa. *Nat Genet* 51: 1207–1214.
- 800 19. Grove J, Ripke S, Als TD, Mattheisen M, Walters RK, Won H, *et al.* (2019):  
801 Identification of common genetic risk variants for autism spectrum disorder. *Nat*  
802 *Genet* 51: 431–444.
- 803 20. Stahl EA, Breen G, Forstner AJ, McQuillin A, Ripke S, Trubetskoy V, *et al.* (2019):  
804 Genome-wide association study identifies 30 loci associated with bipolar disorder.  
805 *Nat Genet* 51: 793–803.
- 806 21. Wray NR, Ripke S, Mattheisen M, Trzaskowski M, Byrne EM, Abdellaoui A, *et al.*  
807 (2018): Genome-wide association analyses identify 44 risk variants and refine the  
808 genetic architecture of major depression. *Nat Genet* 50: 668–681.
- 809 22. Nievergelt CM, Maihofer AX, Klengel T, Atkinson EG, Chen C-Y, Choi KW, *et al.*  
810 (2019): International meta-analysis of PTSD genome-wide association studies  
811 identifies sex- and ancestry-specific genetic risk loci. *Nat Commun* 10: 4558.
- 812 23. Schizophrenia Working Group of the Psychiatric Genomics Consortium, Ripke S,  
813 Walters JT, O'Donovan MC (2020): *Mapping Genomic Loci Prioritises Genes and*  
814 *Implicates Synaptic Biology in Schizophrenia*. Genetic and Genomic Medicine.  
815 <https://doi.org/10.1101/2020.09.12.20192922>
- 816 24. Yu D, Sul JH, Tsetsos F, Nawaz MS, Huang AY, Zelaya I, *et al.* (2019): Interrogating the  
817 Genetic Determinants of Tourette's Syndrome and Other Tic Disorders Through  
818 Genome-Wide Association Studies. *Am J Psychiatry* 176: 217–227.
- 819 25. Savage JE, Jansen PR, Stringer S, Watanabe K, Bryois J, de Leeuw CA, *et al.* (2018):  
820 Genome-wide association meta-analysis in 269,867 individuals identifies new genetic  
821 and functional links to intelligence. *Nat Genet* 50: 912–919.

- 822 26. Scrucca L, Fop M, Murphy TB, Raftery AE (2016): mclust 5: Clustering, Classification  
823 and Density Estimation Using Gaussian Finite Mixture Models. *R J* 8: 289–317.
- 824 27. Hallmayer JF, Kalaydjieva L, Badcock J, Dragovic M, Howell S, Michie PT, *et al.*  
825 (2005): Genetic evidence for a distinct subtype of schizophrenia characterized by  
826 pervasive cognitive deficit. *Am J Hum Genet* 77: 468–476.
- 827 28. Green MJ, Cairns MJ, Wu J, Dragovic M, Jablensky A, Tooney PA, *et al.* (2013):  
828 Genome-wide supported variant MIR137 and severe negative symptoms predict  
829 membership of an impaired cognitive subtype of schizophrenia. *Mol Psychiatry* 18:  
830 774–780.
- 831 29. Loughland C, Draganic D, McCabe K, Richards J, Nasir A, Allen J, *et al.* (2010):  
832 Australian Schizophrenia Research Bank: a database of comprehensive clinical,  
833 endophenotypic and genetic data for aetiological studies of schizophrenia. *Aust N Z J*  
834 *Psychiatry* 44: 1029–1035.
- 835 30. Reay WR, Atkins JR, Quidé Y, Carr VJ, Green MJ, Cairns MJ (2020): Polygenic  
836 disruption of retinoid signalling in schizophrenia and a severe cognitive deficit  
837 subtype. *Mol Psychiatry* 25: 719–731.
- 838 31. Reay WR, Atkins JR, Carr VJ, Green MJ, Cairns MJ (2020): Pharmacological enrichment  
839 of polygenic risk for precision medicine in complex disorders. *Sci Rep* 10: 879.
- 840 32. Lee SH, Goddard ME, Wray NR, Visscher PM (2012): A better coefficient of  
841 determination for genetic profile analysis. *Genet Epidemiol* 36: 214–224.
- 842 33. Reay WR, Shair SE, Geaghan MP, Riveros C, Holiday EG, McEvoy MA, *et al.* (2020):  
843 *Genetically Informed Precision Drug Repurposing for Lung Function and*  
844 *Implications for Respiratory Infection*. Respiratory Medicine.  
845 <https://doi.org/10.1101/2020.06.25.20139816>

- 846 34. Ligthart S, Vaez A, Vösa U, Stathopoulou MG, de Vries PS, Prins BP, *et al.* (2018):  
847 Genome Analyses of >200,000 Individuals Identify 58 Loci for Chronic Inflammation  
848 and Highlight Pathways that Link Inflammation and Complex Disorders. *Am J Hum*  
849 *Genet* 103: 691–706.
- 850 35. Meta-Analyses of Glucose and Insulin-related traits Consortium (MAGIC), Lagou V,  
851 Mägi R, Hottenga J-J, Grallert H, Perry JRB, *et al.* (2021): Sex-dimorphic genetic  
852 effects and novel loci for fasting glucose and insulin variability. *Nat Commun* 12: 24.
- 853 36. Tin A, Marten J, Halperin Kuhns VL, Li Y, Wuttke M, Kirsten H, *et al.* (2019): Target  
854 genes, variants, tissues and transcriptional pathways influencing human serum urate  
855 levels. *Nat Genet* 51: 1459–1474.
- 856 37. Wheeler E, Leong A, Liu C-T, Hivert M-F, Strawbridge RJ, Podmore C, *et al.* (2017):  
857 Impact of common genetic determinants of Hemoglobin A1c on type 2 diabetes risk  
858 and diagnosis in ancestrally diverse populations: A transethnic genome-wide meta-  
859 analysis. *PLoS Med* 14: e1002383.
- 860 38. Burgess S, Bowden J, Fall T, Ingelsson E, Thompson SG (2017): Sensitivity Analyses for  
861 Robust Causal Inference from Mendelian Randomization Analyses with Multiple  
862 Genetic Variants. *Epidemiology* 28: 30–42.
- 863 39. Bowden J, Davey Smith G, Haycock PC, Burgess S (2016): Consistent Estimation in  
864 Mendelian Randomization with Some Invalid Instruments Using a Weighted Median  
865 Estimator. *Genet Epidemiol* 40: 304–314.
- 866 40. Burgess S, Foley CN, Allara E, Staley JR, Howson JMM (2020): A robust and efficient  
867 method for Mendelian randomization with hundreds of genetic variants. *Nat Commun*  
868 11: 376.

- 869 41. Hartwig FP, Davey Smith G, Bowden J (2017): Robust inference in summary data  
870 Mendelian randomization via the zero modal pleiotropy assumption. *Int J Epidemiol*  
871 46: 1985–1998.
- 872 42. Bowden J, Davey Smith G, Burgess S (2015): Mendelian randomization with invalid  
873 instruments: effect estimation and bias detection through Egger regression. *Int J*  
874 *Epidemiol* 44: 512–525.
- 875 43. Bowden J, Del Greco M F, Minelli C, Davey Smith G, Sheehan NA, Thompson JR  
876 (2016): Assessing the suitability of summary data for two-sample Mendelian  
877 randomization analyses using MR-Egger regression: the role of the I<sup>2</sup> statistic. *Int J*  
878 *Epidemiol* 45: 1961–1974.
- 879 44. Rees JMB, Wood AM, Dudbridge F, Burgess S (2019): Robust methods in Mendelian  
880 randomization via penalization of heterogeneous causal estimates. *PLoS One* 14:  
881 e0222362.
- 882 45. Bowden J, Hemani G, Davey Smith G (2018): Invited Commentary: Detecting Individual  
883 and Global Horizontal Pleiotropy in Mendelian Randomization-A Job for the Humble  
884 Heterogeneity Statistic? *Am J Epidemiol* 187: 2681–2685.
- 885 46. Verbanck M, Chen C-Y, Neale B, Do R (2018): Detection of widespread horizontal  
886 pleiotropy in causal relationships inferred from Mendelian randomization between  
887 complex traits and diseases. *Nat Genet* 50: 693–698.
- 888 47. Burgess S, Labrecque JA (2018): Mendelian randomization with a binary exposure  
889 variable: interpretation and presentation of causal estimates. *Eur J Epidemiol* 33:  
890 947–952.
- 891 48. Adams DM, Reay WR, Geaghan MP, Cairns MJ (2020): Investigation of glycaemic traits  
892 in psychiatric disorders using Mendelian randomisation revealed a causal relationship

- 893 with anorexia nervosa. *Neuropsychopharmacology*. <https://doi.org/10.1038/s41386->  
894 020-00847-w
- 895 49. Locke AE, Kahali B, Berndt SI, Justice AE, Pers TH, Day FR, *et al.* (2015): Genetic  
896 studies of body mass index yield new insights for obesity biology. *Nature* 518: 197–  
897 206.
- 898 50. Folkersen L, Fauman E, Sabater-Lleal M, Strawbridge RJ, Frånberg M, Sennblad B, *et al.*  
899 (2017): Mapping of 79 loci for 83 plasma protein biomarkers in cardiovascular  
900 disease. *PLoS Genet* 13: e1006706.
- 901 51. Sanderson E, Davey Smith G, Windmeijer F, Bowden J (2019): An examination of  
902 multivariable Mendelian randomization in the single-sample and two-sample  
903 summary data settings. *International Journal of Epidemiology* 48: 713–727.
- 904 52. Sanderson E, Spiller W, Bowden J (2020): *Testing and Correcting for Weak and*  
905 *Pleiotropic Instruments in Two-Sample Multivariable Mendelian Randomisation.*  
906 *Genetics*. <https://doi.org/10.1101/2020.04.02.021980>
- 907 53. Grant AJ, Burgess S (2020): Pleiotropy robust methods for multivariable Mendelian  
908 randomization. *arXiv:200811997 [stat]*. Retrieved March 1, 2021, from  
909 <http://arxiv.org/abs/2008.11997>
- 910 54. Hemani G, Zheng J, Elsworth B, Wade KH, Haberland V, Baird D, *et al.* (2018): The  
911 MR-Base platform supports systematic causal inference across the human phenome.  
912 *eLife* 7: e34408.
- 913 55. Yavorska OO, Burgess S (2017): MendelianRandomization: an R package for performing  
914 Mendelian randomization analyses using summarized data. *Int J Epidemiol* 46: 1734–  
915 1739.

- 916 56. Giambartolomei C, Vukcevic D, Schadt EE, Franke L, Hingorani AD, Wallace C,  
917 Plagnol V (2014): Bayesian test for colocalisation between pairs of genetic  
918 association studies using summary statistics. *PLoS Genet* 10: e1004383.
- 919 57. Shi H, Mancuso N, Spendlove S, Pasaniuc B (2017): Local Genetic Correlation Gives  
920 Insights into the Shared Genetic Architecture of Complex Traits. *Am J Hum Genet*  
921 101: 737–751.
- 922 58. Berisa T, Pickrell JK (2016): Approximately independent linkage disequilibrium blocks  
923 in human populations. *Bioinformatics* 32: 283–285.
- 924 59. Raudvere U, Kolberg L, Kuzmin I, Arak T, Adler P, Peterson H, Vilo J (2019): g:Profiler:  
925 a web server for functional enrichment analysis and conversions of gene lists (2019  
926 update). *Nucleic Acids Research* 47: W191–W198.
- 927 60. Sun BB, Maranville JC, Peters JE, Stacey D, Staley JR, Blackshaw J, *et al.* (2018):  
928 Genomic atlas of the human plasma proteome. *Nature* 558: 73–79.
- 929 61. Szklarczyk D, Gable AL, Lyon D, Junge A, Wyder S, Huerta-Cepas J, *et al.* (2019):  
930 STRING v11: protein-protein association networks with increased coverage,  
931 supporting functional discovery in genome-wide experimental datasets. *Nucleic Acids*  
932 *Res* 47: D607–D613.
- 933 62. Solmi F, Bulik CM, De Stavola BL, Dalman C, Khandaker GM, Lewis G (2020):  
934 Longitudinal associations between circulating interleukin-6 and C-reactive protein in  
935 childhood, and eating disorders and disordered eating in adolescence. *Brain,*  
936 *Behavior, and Immunity* 89: 491–500.
- 937 63. Chang JP-C, Mondelli V, Satyanarayanan SK, Chiang Y-J, Chen H-T, Su K-P, Pariante  
938 CM (2020): Cortisol, inflammatory biomarkers and neurotrophins in children and  
939 adolescents with attention deficit hyperactivity disorder (ADHD) in Taiwan. *Brain,*  
940 *Behavior, and Immunity* 88: 105–113.



- 941 64. Fond G, Lançon C, Auquier P, Boyer L (2018): C-Reactive Protein as a Peripheral  
942 Biomarker in Schizophrenia. An Updated Systematic Review. *Front Psychiatry* 9:  
943 392.
- 944 65. Hartwig FP, Borges MC, Horta BL, Bowden J, Davey Smith G (2017): Inflammatory  
945 Biomarkers and Risk of Schizophrenia: A 2-Sample Mendelian Randomization Study.  
946 *JAMA Psychiatry* 74: 1226.
- 947 66. Prins BP, Abbasi A, Wong A, Vaez A, Nolte I, Franceschini N, *et al.* (2016):  
948 Investigating the Causal Relationship of C-Reactive Protein with 32 Complex  
949 Somatic and Psychiatric Outcomes: A Large-Scale Cross-Consortium Mendelian  
950 Randomization Study. *PLoS Med* 13: e1001976.
- 951 67. Ligthart S (2019): Commentary: CRP and schizophrenia: cause, consequence or  
952 confounding? *Int J Epidemiol* 48: 1514–1515.
- 953 68. Reay WR, Cairns MJ (2020): The role of the retinoids in schizophrenia: genomic and  
954 clinical perspectives. *Mol Psychiatry* 25: 706–718.
- 955 69. Astle WJ, Elding H, Jiang T, Allen D, Ruklisa D, Mann AL, *et al.* (2016): The Allelic  
956 Landscape of Human Blood Cell Trait Variation and Links to Common Complex  
957 Disease. *Cell* 167: 1415-1429.e19.
- 958 70. Vuckovic D, Bao EL, Akbari P, Lareau CA, Mousas A, Jiang T, *et al.* (2020): The  
959 Polygenic and Monogenic Basis of Blood Traits and Diseases. *Cell* 182: 1214-  
960 1231.e11.
- 961 71. Zametkin AJ, Nordahl TE, Gross M, King AC, Semple WE, Rumsey J, *et al.* (1990):  
962 Cerebral Glucose Metabolism in Adults with Hyperactivity of Childhood Onset. *N*  
963 *Engl J Med* 323: 1361–1366.
- 964 72. Lindblad F, Eickhoff M, Forslund AH, Isaksson J, Gustafsson J (2015): Fasting blood  
965 glucose and HbA1c in children with ADHD. *Psychiatry Res* 226: 515–516.

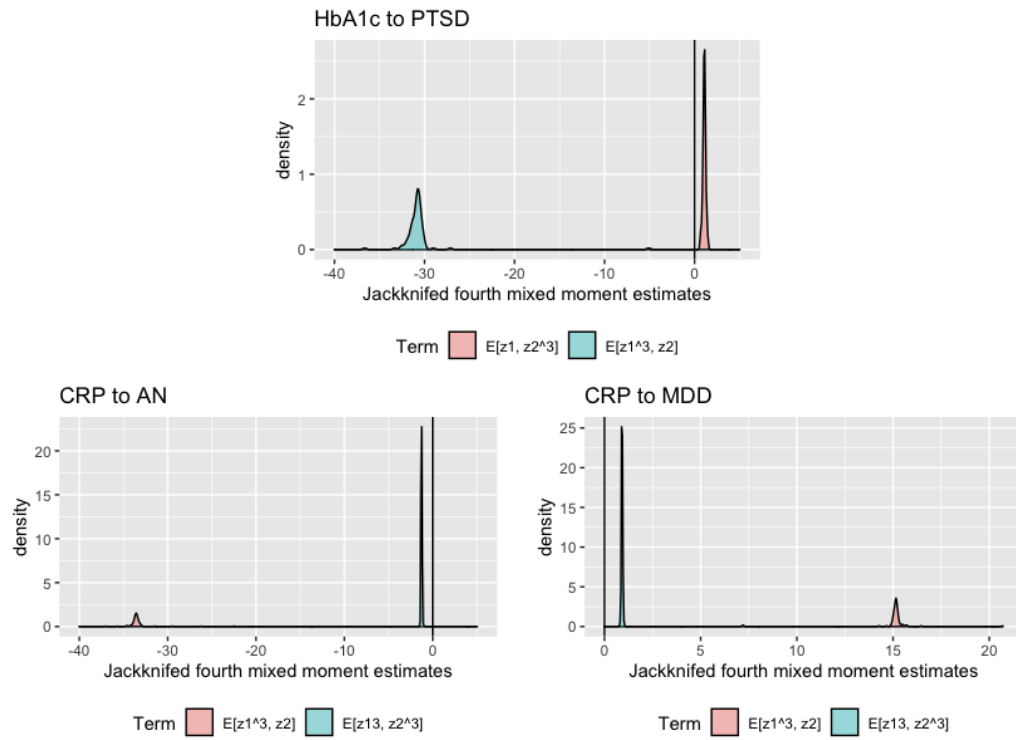
- 966 73. Beydoun MA, Canas J-A, Dore GA, Beydoun HA, Rostant OS, Fanelli-Kuczmariski MT,  
967 *et al.* (2016): Serum Uric Acid and Its Association with Longitudinal Cognitive  
968 Change Among Urban Adults. *J Alzheimers Dis* 52: 1415–1430.
- 969 74. Singh JA, Cleveland JD (2018): Comparative effectiveness of allopurinol versus  
970 febuxostat for preventing incident dementia in older adults: a propensity-matched  
971 analysis. *Arthritis Res Ther* 20: 167.
- 972 75. Sproston NR, Ashworth JJ (2018): Role of C-Reactive Protein at Sites of Inflammation  
973 and Infection. *Front Immunol* 9: 754.
- 974 76. Slaats J, ten Oever J, van de Veerdonk FL, Netea MG (2016): IL-1 $\beta$ /IL-6/CRP and IL-  
975 18/ferritin: Distinct Inflammatory Programs in Infections ((J. B. Bliska, editor)). *PLoS*  
976 *Pathog* 12: e1005973.
- 977 77. Del Giudice M, Gangestad SW (2018): Rethinking IL-6 and CRP: Why they are more  
978 than inflammatory biomarkers, and why it matters. *Brain, Behavior, and Immunity* 70:  
979 61–75.
- 980 78. Jacomb I, Stanton C, Vasudevan R, Powell H, O'Donnell M, Lenroot R, *et al.* (2018): C-  
981 Reactive Protein: Higher During Acute Psychotic Episodes and Related to Cortical  
982 Thickness in Schizophrenia and Healthy Controls. *Front Immunol* 9: 2230.
- 983 79. Li Y-C, Yang S-S, Gao W-J (2016): Disruption of Akt signaling decreases dopamine  
984 sensitivity in modulation of inhibitory synaptic transmission in rat prefrontal cortex.  
985 *Neuropharmacology* 108: 403–414.
- 986 80. Solmi M, Veronese N, Favaro A, Santonastaso P, Manzato E, Sergi G, Correll CU  
987 (2015): Inflammatory cytokines and anorexia nervosa: A meta-analysis of cross-  
988 sectional and longitudinal studies. *Psychoneuroendocrinology* 51: 237–252.

- 989 81. Patsalos O, Dalton B, Himmerich H (2020): Effects of IL-6 Signaling Pathway Inhibition  
990 on Weight and BMI: A Systematic Review and Meta-Analysis. *Int J Mol Sci* 21.  
991 <https://doi.org/10.3390/ijms21176290>
- 992 82. Tiosano S, Yavne Y, Watad A, Langevitz P, Lidar M, Feld J, *et al.* (2020): The impact of  
993 tocilizumab on anxiety and depression in patients with rheumatoid arthritis. *Eur J*  
994 *Clin Invest* 50. <https://doi.org/10.1111/eci.13268>
- 995 83. Knight JM, Costanzo ES, Singh S, Yin Z, Szabo A, Pawar DS, *et al.* (2021): The IL-6  
996 antagonist tocilizumab is associated with worse depression and related symptoms in  
997 the medically ill. *Transl Psychiatry* 11: 58.
- 998 84. Abramovitch A, Anholt GE, Cooperman A, van Balkom AJLM, Giltay EJ, Penninx BW,  
999 van Oppen P (2019): Body mass index in obsessive-compulsive disorder. *J Affect*  
1000 *Disord* 245: 145–151.
- 1001 85. Koellinger PD, de Vlaming R (2019): Mendelian randomization: the challenge of  
1002 unobserved environmental confounds. *International Journal of Epidemiology* 48:  
1003 665–671.
- 1004 86. Gkatzionis A, Burgess S (2019): Contextualizing selection bias in Mendelian  
1005 randomization: how bad is it likely to be? *International Journal of Epidemiology* 48:  
1006 691–701.
- 1007 87. Davies NM, Holmes MV, Davey Smith G (2018): Reading Mendelian randomisation  
1008 studies: a guide, glossary, and checklist for clinicians. *BMJ* k601.
- 1009 88. Labrecque JA, Swanson SA (2019): Interpretation and Potential Biases of Mendelian  
1010 Randomization Estimates With Time-Varying Exposures. *American Journal of*  
1011 *Epidemiology* 188: 231–238.

1012

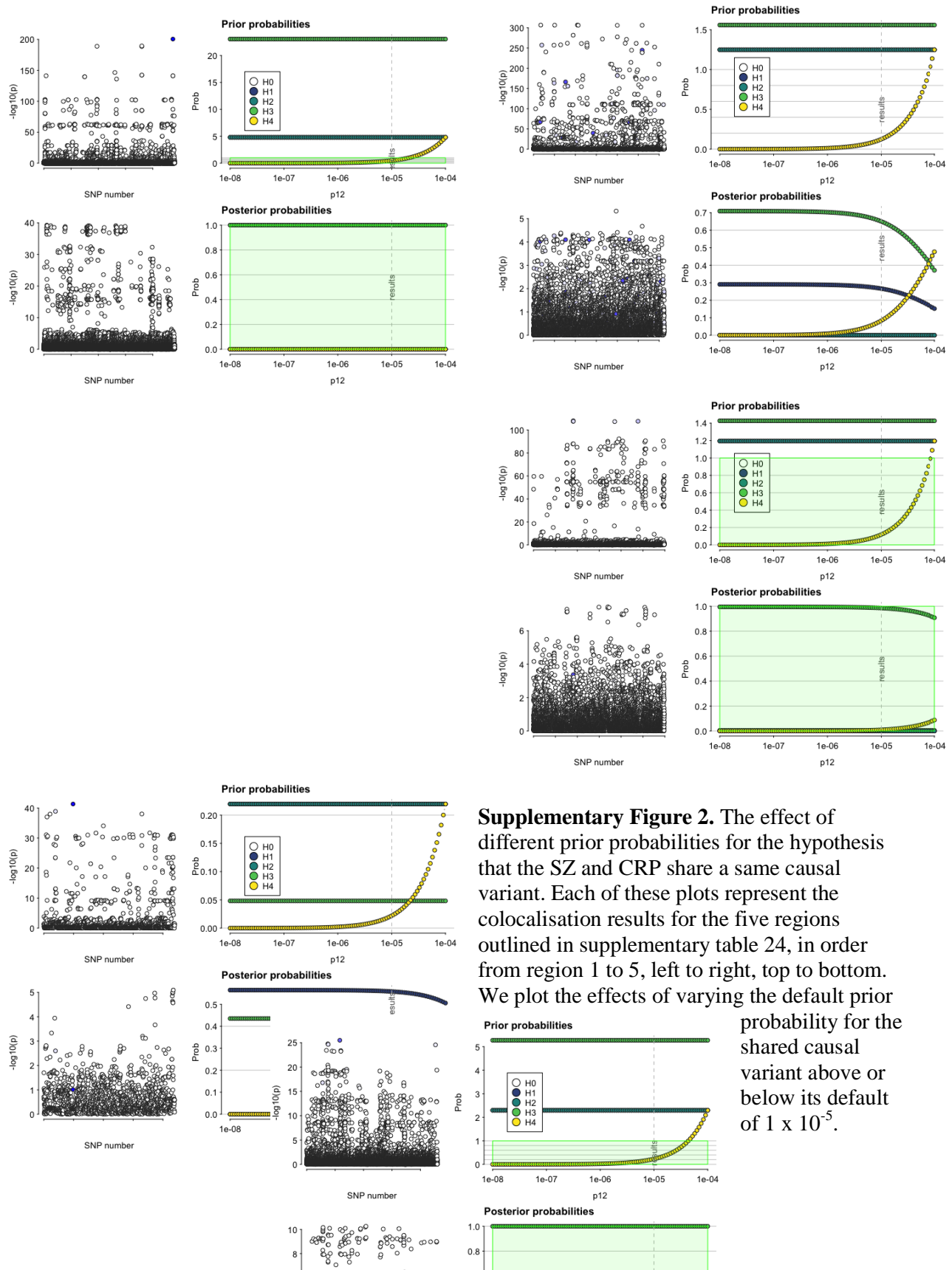
1013

## Supplementary Figure 1



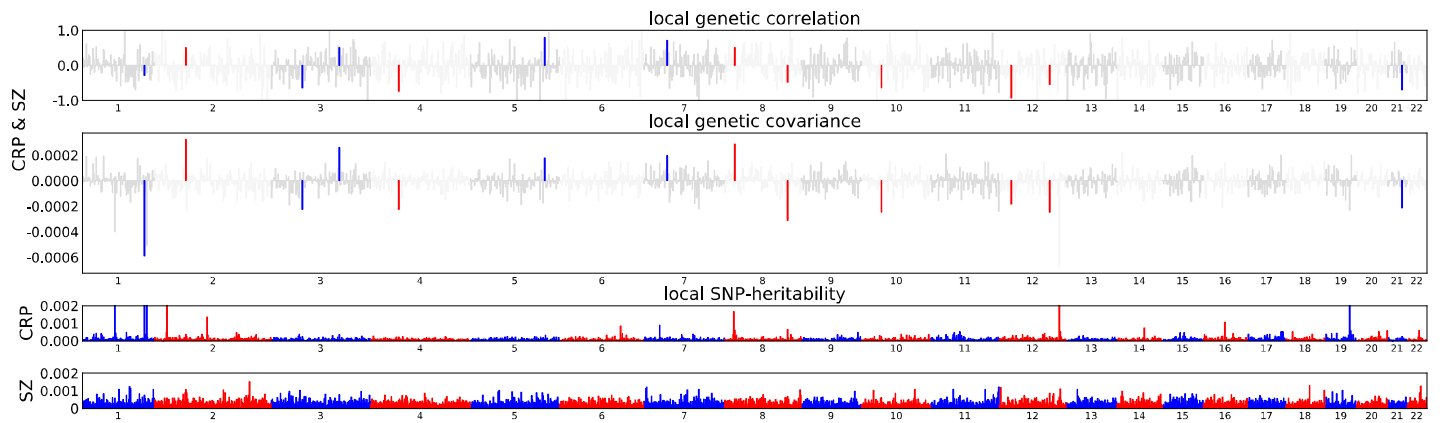
**Supplementary Figure 1. Analysis of an LCV model violation in the HbA1c to PTSD model.** As outlined in the supplementary text, we demonstrated that the two mixed fourth moments (cokurtosis) estimates for HbA1c to PTSD were opposite in sign, with an outlier jackknifed estimate of  $E[z_1, z_2^3]$  which suggests discordant SNP effects relative to the genome-wide signal. Conversely, the CRP to AN and CRP to MDD had consistent signs of  $E[z_1^3, z_2]$  and  $E[z_1, z_2^3]$  relative to each other and the genetic correlation. In both CRP models,  $E[z_1, z_2^3]$ , which implies  $GCP > 0$ .

## Supplementary Figure 2



**Supplementary Figure 2.** The effect of different prior probabilities for the hypothesis that the SZ and CRP share a same causal variant. Each of these plots represent the colocalisation results for the five regions outlined in supplementary table 24, in order from region 1 to 5, left to right, top to bottom. We plot the effects of varying the default prior probability for the shared causal variant above or below its default of  $1 \times 10^{-5}$ .

### Supplementary Figure 3



**Supplementary Figure 3. Local genetic covariance and correlation between schizophrenia and CRP as estimated by  $\rho$ -HESS.** The first two panels are estimates of local genetic correlation and covariance for each approximately independent LD block throughout the genome. Coloured bars represent significant estimates. The remaining two panels are local estimates SNP heritability in those same regions for CRP and SZ, respectively.