

Transmission roles of symptomatic and asymptomatic COVID-19 cases: a modeling study

Authors:

Jianbin Tan^{1†}, Yang Ge^{2†}, Leonardo Martinez³, Zhiping Chen⁴, Changwei Li⁵,
Adrianna Westbrook², Enfu Chen⁴, Jinren Pan⁴, Yang Li⁶, Feng Ling⁴,
Jimin Sun^{4‡}, Hui Huang^{1‡}, Ye Shen^{2‡}.

Author affiliations:

¹Sun Yat-Sen University, School of Mathematics, Guangzhou, China;

²University of Georgia, College of Public Health, Department of Epidemiology and Biostatistics, Athens, Georgia, United States;

³Boston University, Department of Epidemiology, Boston, United States;

⁴Zhejiang Provincial Center for Disease Control and Prevention, Hangzhou, China;

⁵Tulane University School of Public Health and Tropical Medicine, Department of Epidemiology, New Orleans, Louisiana, United States;

⁶Renmin University of China, School of Statistics, Beijing, China.

† Joint first authors; ‡ Joint senior authors.

Corresponding Author:

Dr. Ye Shen, University of Georgia, College of Public Health, Department of Epidemiology and Biostatistics, Athens, Georgia, United States

Word count: 3485.

Key words: COVID-19, SARS-CoV-2, age-dependent contact, asymptomatic case, transmission

Declarations

Funding: This study was supported by the Zhejiang Basic Public Welfare Research Project (Grant No. LGF21H260003, PI: Feng Ling). The funders had no role in the study design, data collection and analysis, decision to publish, or preparation of the manuscript.

Conflict of interest: The authors declare that the research was conducted in the absence of any commercial or financial relationships that could be construed as a potential conflict of interest.

Ethics approval: The research protocol was approved by the institutional review board at the Zhejiang Provincial Center for Disease Control and Prevention. The study was based on deidentified data.

Data availability statement: The data we used in the analysis contain the age and COVID-19 symptom onset/disease confirmation dates of each case. It is possible to reveal the patients' identities by linking these individual-level information to other sources such as local media coverage or social media release. Therefore, the data were not made publicly available. However, we will provide de-identified data upon request for research purposes.

1 **Abstract**

2 Age-dependent asymptomatic and symptomatic transmission dynamics of COVID-19 have not
3 been well quantified due to limited data. Through a population-based surveillance network, we
4 collected data on 1342 confirmed cases with a 90-days follow-up for all asymptomatic cases.
5 The difference in transmissibility of a symptomatic and asymptomatic case depended on age
6 and was most distinct for the middle-age groups. The asymptomatic cases had a 66.72% lower
7 transmissibility rate than symptomatic cases, and 74.10% (95%CI: 65.85% - 80.72%) of all
8 asymptomatic cases were missed in detection. The average proportion of asymptomatic cases
9 was 28.22% (95%CI: 22.97% - 34.56%). Simulation showed that the burden of asymptomatic
10 transmission increased as the epidemic continued and could potentially dominate the
11 spreading. Asymptomatic COVID-19 cases play a significant role in transmission. Vaccine
12 Strategies prioritizing the population between 30-60 years old are likely to have the most
13 population-level benefits.

14 **Background**

15 COVID-19, caused by the novel coronavirus (SARS-CoV-2),[1] is a great threat to human
16 health.[2] Nonpharmaceutical interventions such as social distancing, case isolation and contact
17 quarantines are the most common tools for suppressing the pandemic in many countries where
18 vaccine supplements are limited.[3–5] However, these interventions are less effective in
19 asymptomatic transmission prevention and control.[6]

20
21 COVID-19 patients may present and remain pre-symptomatic, asymptomatic, or
22 symptomatic and transmission may occur at each of these disease states.[7–9] Unlike the
23 transmission caused by symptomatic cases, pre-symptomatic and asymptomatic transmission
24 are hard to detect and difficult to measure as many surveillance systems rely on
25 symptom-based population screening.[7,10–12] Previous case studies suggested that
26 asymptomatic COVID-19 individuals are less infectious than symptomatic cases.[13,14]
27 However, asymptomatic cases may spread for a longer period due to reduced efficiency in case
28 detection.[15] Several studies investigated the silent transmission of SARS-CoV-2, but presented
29 contradictory conclusions with estimated burden ranged from 3% to 79%.[15–17]

30
31 Without sufficient follow-up time, asymptomatic and pre-symptomatic cases are often
32 indistinguishable. Consequently, studies using population-level data to estimate of age-specific
33 transmission and susceptibility parameters commonly falls short of accuracy which potentially
34 explains for the heterogeneous findings from different studies.[18–20] Common issues were
35 modeling without data on observed asymptomatic infection[15–17,21] and inclusion of

36 pre-symptomatic cases as part of an asymptomatic classification, [18–20] . Meanwhile, few
37 studies assessing asymptomatic infectiousness and viral load with limited sample sizes fail to
38 capture the transmission dynamics. [13,14,22–29] No studies to date have attempted to
39 combine reliable case symptom classification with age-dependent transmissibility, social
40 contact measures, and susceptibility parameters at the population level to learn the
41 transmission dynamics. However, a comprehensive understanding of the age-specific
42 symptomatic and asymptomatic transmission dynamics at the population level is essential to
43 the evaluation of an epidemic and the creation of responding health policies.

44
45 In this study, we report on a longitudinal cohort of all diagnosed COVID-19 infections,
46 between January 7th and February 22nd, 2020, from Zhejiang province, China. All patients
47 without initial symptoms were followed by at least 90 days to distinguish between
48 asymptomatic and pre-symptomatic cases, an essential procedure rarely implemented by
49 previous studies to ensure reliable classification of case symptoms. We then built age-stratified
50 compartmental models to study the age-dependent population-level transmission roles of
51 symptomatic and asymptomatic COVID-19 cases.

52 **Methods**

53 Data sources

54 Zhejiang province is an eastern coastal province adjacent to Shanghai city with a
55 population of approximately 54 million individuals.[30] The first and only major wave of the
56 COVID-19 epidemic in Zhejiang began on January 7th, 2020 and continued until February 22nd,
57 2020 after which only sporadic single-case events were observed. We included information
58 from all confirmed cases in this major wave (a total of 1342 cases), as well as a follow-up
59 investigation related to all detected asymptomatic infections to distinguish between
60 asymptomatic and pre-symptomatic cases. Individual-level data related to the symptom onset
61 of symptomatic infections, as well as COVID-19 confirmation dates and ages of both
62 symptomatic and asymptomatic cases were collected. For the contact data, we obtained
63 contact matrices between age groups from surveys conducted in Shanghai.[31,32] Other
64 primary sources of data used in our analyses include the population census data of Zhejiang
65 province[30] and the estimated age-dependent susceptibility of COVID-19 from a previous
66 study.[21]

67
68 On January 23rd, 2020, the provincial government changed its infectious disease alert
69 category to the highest level and, on February 1st, began a comprehensive set of
70 interventions.[33] As of April 10th, 2020, the date in which we restricted our data for this
71 analysis, no additional outbreak had been observed. Trained health professionals investigated
72 each confirmed case with a predefined questionnaire by which basic health and demographic
73 information were collected.

74

75 Definition of symptomatic and asymptomatic cases

76 All confirmed cases and their close contacts were isolated or quarantined after being
77 identified through contact tracing. During the isolation/quarantine period, cases and their
78 contacts received regular testing and daily symptom screening for fever, cough, and shortness
79 of breath. Tests for case confirmation were conducted using reverse transcription polymerase
80 chain reaction (RT-PCR) or viral genome sequencing on samples from throat swabs (oropharynx
81 and nasopharynx). If a case or contact had a positive test result but without any symptoms,
82 they would be temporarily classified as an asymptomatic/pre-symptomatic case at the time. All
83 cases were followed for at least 90 days after their initial positive test to distinguish between
84 asymptomatic and pre-symptomatic cases. Among these subjects, those who developed
85 symptoms later would receive a final classification as a symptomatic case. Others who had
86 never developed any symptoms between their initial positive test and first subsequent negative
87 PCR test would be classified as asymptomatic cases.

88

89 Model structure

90 We divided the total population of Zhejiang province into seven age groups: 0-10, 10-20,
91 20-30, 30-40, 40-50, 50-60, 60+. To consider transmission related to symptomatic and
92 asymptomatic infections among different age groups, our model contained 8 compartments for
93 the i^{th} age group: susceptible population (S^i), exposed contacts (E^i), pre-symptomatic cases
94 (I_{ps}^i , infected but have not yet developed symptoms), symptomatic cases (I_s^i), asymptomatic
95 cases (I_a^i , infected but asymptomatic till confirmed/recovery), and removed/recovery groups

96 $(R_{cs}^i, R_{ca}^i, R_h^i)$. We assumed new infections were driven by transmission from compartments
97 of I_{ps}^i, I_s^i and I_a^i in all age groups. Asymptomatic cases (I_a^i) were infections without typical
98 symptoms. These infections were difficult to identify through symptom-based screening;
99 therefore, underreporting in this category of infections was notable. While some asymptomatic
100 cases may have been quarantined through contact tracing, others may have remained
101 unnoticed throughout the entirety of their transmissibility. As such, it is essential to consider
102 unconfirmed asymptomatic cases, also referred as the self-recovered asymptomatic cases (R_h^i
103 in Figure 1) in modeling. For all age groups, the details of the compartments are given in Table
104 1, and the state transitions in the compartmental model are given in Figure 1.

105

106 Social contacts

107 To identify age-varying transmissibility and susceptibility within the compartmental
108 model,[21] we assumed a time-varying curve for the average contact numbers of i^{th} age
109 group with j^{th} age group (c_t^{ij}), which is estimated with the contact matrix between age groups
110 through surveys conducted in Shanghai.[31,32] The surveys provided two different strengths of
111 contact (before and during the epidemic). The first survey conducted in 2017 to 2018 in
112 Shanghai was considered as a background of the strength of contact.¹⁶ The second survey, with
113 the same design, was conducted during the epidemic (from February 1 to 10, 2020). The details
114 of the modeling of the contact function (c_t^{ij}) are further described in the Supplementary
115 Appendix.

116

117 Susceptibility-contact-transmissibility transmission process

118 When modeling transmission dynamics of infectious diseases, a key factor to consider is
119 the probability of infection for a susceptible individual given contact with an infectious
120 individual. Here, we separate this concept into two components: transmissibility (T) and
121 susceptibility (s). We define transmissibility (T) as the infectiousness of one case.
122 Theoretically, it is the secondary attack rate in their fully susceptible contacts ($s = 1$). Similarly,
123 we define susceptibility (s) as the probability of acquiring infection from an infectious case
124 ($T = 1$). Therefore, $s = 0$ corresponds to a situation in which the susceptible individuals are
125 immune to the disease (this setting was later used to conduct a simulation study to assess
126 possible age-dependent vaccination strategies if a certain age group were to achieve 100%
127 immunity by vaccinations). We assumed that case transmissibility would depend on age and the
128 presence of symptoms. To better quantify transmissibility and susceptibility, we introduced the
129 estimated susceptibility (s_i) for i^{th} age group from a previous study as a prior in our
130 model.[21] In this setting, the occurrence of a transmission event depends on both
131 transmissibility of the index case and the susceptibility of the contact. The number of secondary
132 cases (ρ) from one infectious case at unit time can be calculated as:

$$\rho = s \cdot \text{contact number} \cdot T$$

133 Let $T_{i,s}$ be the transmissibility of symptomatic infections in i^{th} age group. To capture
134 the age-dependent pattern, B splines basis functions were used to model the variability in
135 age-varying transmissibility smoothly. Given $T_{i,s}$, we assumed that the age-varying
136 transmissibility of asymptomatic infectious individuals was equivalent to $T_{i,a} := \gamma_i T_{i,s}$, where
137 $\gamma_i \leq 1$, i.e., the transmissibility of asymptomatic cases is no stronger than that of symptomatic

138 cases across different age groups, based on currently available evidence[13,14,34]. The
139 estimated mean of s_i and the B spline functions mentioned above are shown in Table S3 and
140 Figure S2 (in the Supplementary Appendix).

141

142 Asymptomatic infections

143 Our compartmental model (Figure 1) considered the transmission from asymptomatic
144 infections, which were often untraceable in the clinical survey and, therefore, their contribution
145 to population-level transmission would be underestimated. To account for this, we assumed
146 only a proportion of asymptomatic infections were detected (R_{ca}^i), while others (R_h^i) would be
147 unconfirmed (and not diagnosed) if self-recovery occurred prior to diagnosis. We were able to
148 observe disease confirmation date but not the date of infection for the period from cases
149 becoming infectious to the diagnosis of COVID-19 (\mathcal{A}_1^i) in those with confirmed asymptomatic
150 infection. Based on the virus shedding pattern of asymptomatic infections reported in previous
151 studies,[12,14,35,36] we assumed that this period should be less than 30 days, after which virus
152 shedding generally ceases, and infection is no longer detectable through pathogen-specific
153 testing. As such, a uniform prior with an upper bound of 30 days was adopted for \mathcal{A}_1^i . For the
154 period from being infectious to becoming non-infectious (negative conversion of virus shedding)
155 in the undetected asymptomatic infections (\mathcal{A}_2), we used a more informative log normal prior
156 with a mean of 17 days and standard error of 1.07 based on estimated parameters from a
157 previous study.[12,14,35,36] The difference between \mathcal{A}_1^i and \mathcal{A}_2 would reflect the intensity
158 of the contact tracing for different ages. More details are provided in the Supplementary
159 Appendix.

160

161 Model fitting

162 Let N_i be the total population of i^{th} age group in Zhejiang province. Based on the
163 setting above, we defined a dynamic system for the 8×7 compartments, which is shown in
164 the equation (S3) (in the Supplementary). The state transitions in the compartmental model are
165 given in Figure 1. Based on our compartmental model, we can estimate the secondary cases
166 transmitted by symptomatic and asymptomatic indexes respectively, which are used to
167 evaluate the burden of both symptomatic and asymptomatic transmission from different age
168 groups. More details are given in the equation (S4) and (S5) (in the Supplementary).

169

170 We built our model with features mentioned in above sections through a Bayesian
171 procedure for the estimation and inference of model parameters (listed in Table S5).[37–39]
172 Specifically, the compartmental model was fitted to the daily new symptomatic and
173 asymptomatic cases in Zhejiang province for each age group. The Bayesian procedure with a
174 Markov Chain Monte Carlo (MCMC) sampling algorithm also utilized information relating to the
175 COVID-19 transmission from other sources of datasets, e.g. survey studies on the contact
176 matrix, and estimated age-dependent susceptibility from previous studies, therefore, the
177 posterior distributions of parameters could be elegantly extracted by the sufficient prior and
178 sample evidence. More details of the Bayesian model structure, assessment, and estimation of
179 parameters are given in the Supplementary Appendix. All analyses were implemented in R
180 version 3.5.1. Packages of deSolve,[40] extraDistr,[41] and splines[42] were used for model

181 fitting. Unless stated otherwise, the medians of the posterior distributions were used as the
182 point estimators of parameters and simulated numbers.

183

184 Ethics approval

185 The research protocol was approved by the institutional review board at the Zhejiang
186 Provincial Center for Disease Control and Prevention. The study was based on deidentified data.

187

188 Results

189

190 Transmissibility

191 The estimated transmissibility presented an age-dependent difference between
192 symptomatic and asymptomatic infections (Figure 2). While the transmission of symptomatic
193 cases monotonically increased with increasing age, the transmissibility of asymptomatic
194 infection remained low until age 40, after which point it significantly increased with increasing
195 age. The age-varying ratios of the two kinds of transmissibility indicated asymptomatic cases
196 were, on average, 66.72% lower in transmission than symptomatic cases. However, the
197 difference between the two types of infections was not as big in those aged 0-20 and 60+ years
198 old, but became more obvious in the middle-aged group where the ratios were as low as 24.42%
199 and 23.38% for those aged 30-40 and 40-50 years old, respectively.

200

201 The proportion of asymptomatic cases

202 In Figure 3, the proportion of asymptomatic cases ($\frac{R_h^i + R_{ca}^i}{R_h^i + R_{cs}^i + R_{ca}^i}$) estimated by our model
203 was much larger than what was observed in the data. The average proportion of asymptomatic
204 cases was 28.22% (95%CI: 22.97% - 34.56%) of the total counts of cases in our model
205 estimation, but was 9.24% in the observed data ($\frac{R_{ca}^i}{R_{cs}^i + R_{ca}^i}$). In our estimation from the empirical
206 data, the highest proportion of asymptomatic case was among 0-10 (60.18% (95%CI: 53.61% -
207 66.99%)) and 10-20 (57.64% (95%CI: 47.45% – 66.98%)) years old groups. For asymptomatic
208 cases, we further estimated the proportion of cases that failed to be detected ($\frac{R_h^i}{R_h^i + R_{ca}^i}$). In the

209 posterior samples, the average proportion of unconfirmed cases in all asymptomatic infections
210 was 74.10% (95%CI: 65.85% - 80.72%). The maximum proportion of unconfirmed cases was
211 observed in 20-30 years old at 86.59% (95%CI: 73.64% - 92.19%).

212

213 Symptomatic and asymptomatic transmission

214 To explore the impact of symptomatic and asymptomatic transmission, we present
215 several features of the estimated dynamic of the epidemic and the transmission burden caused
216 by symptomatic and asymptomatic cases in Figure 4. The estimated number of daily new
217 transmissions reached a peak around ten days prior to the peak of the daily reported new
218 confirmed cases (Figure 4A). We estimated a substantial number of undetected asymptomatic
219 cases (109 (95%CI: 73 - 164)) were infected before the first asymptomatic case was diagnosed
220 (January 27th) (Figure 4B). New transmissions were nearly eliminated by February 1st, 2020
221 (Figure 4A), when a comprehensive set of restrictions¹⁹ had been implemented. The peak of the
222 two types of transmission both occurred between January 17th to 21st (Figure 4C). The average
223 burden of asymptomatic transmission during the major outbreak period was estimated to be
224 12.86% (95%CI: 7.54% - 19.27%). The burden of asymptomatic transmission increased with time,
225 ranging from 7.77% to 16.03% (Figure 4D). Simulation studies were conducted to investigate
226 the dynamic changes in the transmission burden over time during a prolonged epidemic (Figure
227 S5). When the duration of the decreasing process of the contact function (represented by “*m*”
228 in Figure S1) was prolonged by two weeks and each individual’s daily contact number was
229 increased by one person during the outbreak period, we found a slower decreasing trend in
230 daily new cases infected by asymptomatic cases compared with that contributed by

231 symptomatic cases (Figure S5, scenario 1). Additional scenarios were generated demonstrating
232 the possibility of asymptomatic transmission dominating the total transmission under different
233 conditions, especially when the duration between symptom onset and disease confirmation for
234 symptomatic infections was shortened and the asymptomatic infections were not controlled
235 (Figure S5, scenarios 2 and 3).

236

237 Age-dependend transmission

238 Within each age group, we observed heterogeneous transmission contributions during
239 different time periods (Figure 5A). Early on in the epidemic, the transmission burden was
240 dominated by persons of 50-60 years old (32.75% from January 7th to January 11th), but the
241 proportion of transmission contribution from people over 60 years old significantly increased
242 over time, surpassing the 50-60 years old and reaching 30.42% by January 31st, 2020. The
243 proportion of transmission contribution among varying age groups was distinct between
244 symptomatic and asymptomatic cases (Figure 5B). The majority of both symptomatic and
245 asymptomatic transmissions were contributed by persons over 30 years old (Table S9).
246 Individuals below 30 years old only contributed less than 5% of all symptomatic transmission
247 and approximately 12% of all asymptomatic transmission, respectively, despite representing
248 almost 40% of the entire population. Contributions to asymptomatic transmission among 20-30
249 and >60 year age groups (9.44%, and 31.73%, respectively) were substantially higher than their
250 corresponding contributions to symptomatic transmission (3.77%, and 26.55%, respectively). To
251 further understand possible age-dependent vaccination strategies, a simulation of seven
252 scenarios was conducted to assess the percentage decline in different age groups if one age

253 group were to achieve 100% immunity by vaccinations (Figure S6). The results suggested that
254 vaccinations targeting age groups above 30 years are likely to be more effective at the
255 population level, with the most percentage decline of cases from the entire population
256 achieved by targeting the 50-60 years old group. Meanwhile, vaccinating those younger than 30
257 years old are more likely to benefit their own age groups.

258 Discussion

259 In our study, we found that asymptomatic cases were over 60% less infectious
260 compared to symptomatic cases. While great efforts like mass screening and strict contact
261 tracing were conducted, our results suggested that a large proportion of asymptomatic
262 infections were still not detected.[43] The burden of asymptomatic transmission was inferior in
263 the early outbreak but could become higher with the continuous spread of COVID-19. Under
264 strained resources, age-specific prevention and control strategies aimed at the middle age
265 population may return greater population-level benefits.

266
267 Current evidence suggests that asymptomatic COVID-19 cases are generally less
268 infectious[13] than cases with symptoms. We found that this difference may partially be
269 explained by patient age. Age may directly impact COVID-19 transmission through virus
270 shedding patterns[14] as discussed in previous studies.[44] Symptoms are commonly mild in
271 children[45] but severe in the elderly.[46] While still debatable,[47] higher severity has been
272 associated with increased shedding of the virus.[48] In our study, symptomatic and
273 asymptomatic cases were most infectious in individuals 60 years old or older. In contrary to the
274 monotonic increasing association between age and transmission in symptomatic cases, there
275 was a plateau of a low degree of transmission in young asymptomatic infections. We suspect
276 older adults are not only the most vulnerable to succumb to COVID-19 but also may be more
277 likely to transmit once infected, regardless of symptom status. Interventions attempting to
278 suppress asymptomatic transmission, such as mask-wearing, should primarily focus on older
279 adults if interventions to the whole community are not feasible.

280

281 Similar to previous studies, our results suggest a small proportion of asymptomatic
282 cases have been detected since the start of the COVID-19 pandemic in our setting.[49–51]
283 Symptom-based screening has limited capability in asymptomatic case detection,[6] while mass
284 pathogen or immunological-based testing at the population-level consumes tremendous health
285 resources, and thus is not feasible in most settings. Considering these challenges,
286 age-dependent screening strategies may be more practical. We found that the highest number
287 of undetected asymptomatic cases was among young adults aged 20 to 30 years old (Table S7)
288 and the corresponding transmission contribution was significantly higher than that of
289 symptomatic case (Figure 5B). Young people were less likely to adhere to social distancing
290 guidelines,[52] often had mild symptoms or were asymptomatic after infection,[53] and were
291 not prioritized in prevention and controlling strategies.[54] Meanwhile, younger asymptomatic
292 patients were also more likely to have normal CAT scan findings, which may further complicate
293 case detection.[11] Case detection of asymptomatic COVID-19 cases based on current control
294 strategies implemented in this study is alarming.

295

296 Based on the estimated transmission contributions from symptomatic and
297 asymptomatic infections, roughly 13% of infections were associated with asymptomatic
298 transmission and that percentage continuously increased with a prolonged period. The overall
299 burden of transmission was mainly contributed by symptomatic cases at the beginning of the
300 epidemic, but asymptomatic infections appeared to have increasing percentages of subsequent
301 cases later on. Additional simulations suggested that the transmission burden could even be

302 dominated by asymptomatic transmissions under certain circumstances (Figure S5). Therefore,
303 the spreading potential of asymptomatic cases cannot be ignored, especially in the later stages
304 of the epidemic and in regions where social distancing has not been mandated. Meanwhile,
305 potential differences in transmission burden by age groups, as shown in Figure 5 and S6,
306 supports prioritizing age-dependent prevention and control strategies when facing strained
307 resources. As the larger contributor to the transmission of COVID-19, the older age population
308 is not only a highly vulnerable group but should also be the primary target for prevention
309 strategies. Vaccine Strategies prioritizing the population between 30-60 years old are likely to
310 have the most population-level benefits.

311

312 There are several limitations in this study. First, data collection likely missed potential
313 cases of the epidemic, despite intensified efforts devoted by the local investigation team to
314 trace contacts. Due to this, we introduced a compartment in our model (R_h^i) to adjust for poor
315 case ascertainment and missing cases. Second, transmissibility and susceptibility were two
316 factors related to symptomatic and asymptomatic transmission estimation and can be difficult
317 to capture simultaneously. We used the susceptibility estimates from a previous study[21] as
318 priors in our model to account for this parameter identification problem. Third, the contact
319 survey data we used in our model were obtained in Shanghai, a city adjacent to Zhejiang
320 province. Although the two regions share a similar culture and modes of social activities, there
321 were potential uncertainties associated with the discrepancies in contact matrices. To address
322 this limitation, we introduced a correction parameter in our model, so these uncertainties were
323 partially adjusted for in the analyses.

324

325 In summary, our results suggest individual-level transmissibility of COVID-19 increases
326 with patient age, therefore targeting older age groups with prevention and intervention
327 strategies is expected to be more efficient. While asymptomatic cases are difficult to trace, the
328 burden of asymptomatic transmission is still sizable and should not be ignored. The results from
329 our study can be used to inform policy decisions on pandemic control and safe reopening.

330 **References**

- 331 1. Guan W-J, Ni Z-Y, Hu Y, Liang W-H, Ou C-Q, He J-X, et al. Clinical Characteristics of
332 Coronavirus Disease 2019 in China. *N Engl J Med*. Massachusetts Medical Society;
333 2020;382:1708–20.
- 334 2. World Health Organization. WHO Coronavirus Disease (COVID-19) Dashboard (12/12/2020)
335 [Internet]. [cited 2020 Dec 12]. Available from: <https://covid19.who.int>
- 336 3. Ferguson N, Laydon D, Nedjati Gilani G, Imai N, Ainslie K, Baguelin M, et al. Report 9: Impact
337 of non-pharmaceutical interventions (NPIs) to reduce COVID19 mortality and healthcare
338 demand [Internet]. Imperial College London; 2020 Mar. Available from:
339 <http://spiral.imperial.ac.uk/handle/10044/1/77482>
- 340 4. Prem K, Liu Y, Russell TW, Kucharski AJ, Eggo RM, Davies N, et al. The effect of control
341 strategies to reduce social mixing on outcomes of the COVID-19 epidemic in Wuhan, China: a
342 modelling study. *The Lancet Public Health*. Elsevier; 2020;5:e261–70.
- 343 5. Lewnard JA, Lo NC. Scientific and ethical basis for social-distancing interventions against
344 COVID-19. *The Lancet Infectious Diseases*. 2020;20:631–3.
- 345 6. Gandhi M, Yokoe DS, Havlir DV. Asymptomatic Transmission, the Achilles' Heel of Current
346 Strategies to Control Covid-19. *N Engl J Med*. 2020;382:2158–60.
- 347 7. Rothe C, Schunk M, Sothmann P, Bretzel G, Froeschl G, Wallrauch C, et al. Transmission of
348 2019-nCoV Infection from an Asymptomatic Contact in Germany. *N Engl J Med*. Massachusetts
349 Medical Society; 2020;382:970–1.
- 350 8. Holshue ML, DeBolt C, Lindquist S, Lofy KH, Wiesman J, Bruce H, et al. First Case of 2019
351 Novel Coronavirus in the United States. *N Engl J Med*. 2020;382:929–36.
- 352 9. Hoehl S, Rabenau H, Berger A, Kortenbusch M, Cinatl J, Bojkova D, et al. Evidence of
353 SARS-CoV-2 Infection in Returning Travelers from Wuhan, China. *N Engl J Med*.
354 2020;382:1278–80.
- 355 10. Wölfel R, Corman VM, Guggemos W, Seilmaier M, Zange S, Müller MA, et al. Virological
356 assessment of hospitalized patients with COVID-2019. *Nature*. 2020;581:465–9.
- 357 11. Kronbichler A, Kresse D, Yoon S, Lee KH, Effenberger M, Shin JI. Asymptomatic patients as a
358 source of COVID-19 infections: A systematic review and meta-analysis. *International Journal of*
359 *Infectious Diseases*. 2020;98:180–6.
- 360 12. Han MS, Seong M-W, Kim N, Shin S, Cho SI, Park H, et al. Viral RNA Load in Mildly
361 Symptomatic and Asymptomatic Children with COVID-19, Seoul, South Korea. *Emerging*
362 *Infectious Diseases*. 2020;26:2497–9.

- 363 13. Gao M, Yang L, Chen X, Deng Y, Yang S, Xu H, et al. A study on infectivity of asymptomatic
364 SARS-CoV-2 carriers. *Respir Med.* 2020;169:106026.
- 365 14. Kim SE, Jeong HS, Yu Y, Shin SU, Kim S, Oh TH, et al. Viral kinetics of SARS-CoV-2 in
366 asymptomatic carriers and presymptomatic patients. *Int J Infect Dis.* 2020;95:441–3.
- 367 15. Moghadas SM, Fitzpatrick MC, Sah P, Pandey A, Shoukat A, Singer BH, et al. The implications
368 of silent transmission for the control of COVID-19 outbreaks. *PNAS. National Academy of*
369 *Sciences;* 2020;117:17513–5.
- 370 16. Li R, Pei S, Chen B, Song Y, Zhang T, Yang W, et al. Substantial undocumented infection
371 facilitates the rapid dissemination of novel coronavirus (SARS-CoV-2). *Science.*
372 2020;368:489–93.
- 373 17. Ferretti L, Wymant C, Kendall M, Zhao L, Nurtay A, Abeler-Dörner L, et al. Quantifying
374 SARS-CoV-2 transmission suggests epidemic control with digital contact tracing. *Science*
375 [Internet]. American Association for the Advancement of Science; 2020 [cited 2020 Dec
376 21];368. Available from: <https://science.sciencemag.org/content/368/6491/eabb6936>
- 377 18. Hu Z, Song C, Xu C, Jin G, Chen Y, Xu X, et al. Clinical characteristics of 24 asymptomatic
378 infections with COVID-19 screened among close contacts in Nanjing, China. *Sci China Life Sci.*
379 Nature Publishing Group; 2020;63:706–11.
- 380 19. Huang L, Zhang X, Zhang X, Wei Z, Zhang L, Xu J, et al. Rapid asymptomatic transmission of
381 COVID-19 during the incubation period demonstrating strong infectivity in a cluster of
382 youngsters aged 16-23 years outside Wuhan and characteristics of young patients with
383 COVID-19: A prospective contact-tracing study. *J Infect.* 2020;80:e1–13.
- 384 20. Meng H, Xiong R, He R, Lin W, Hao B, Zhang L, et al. CT imaging and clinical course of
385 asymptomatic cases with COVID-19 pneumonia at admission in Wuhan, China. *J Infect.*
386 2020;81:e33–9.
- 387 21. Davies NG, Klepac P, Liu Y, Prem K, Jit M, CMMID COVID-19 working group, et al.
388 Age-dependent effects in the transmission and control of COVID-19 epidemics. *Nat Med.*
389 Nature Publishing Group; 2020;26:1205–11.
- 390 22. Zhou R, Li F, Chen F, Liu H, Zheng J, Lei C, et al. Viral dynamics in asymptomatic patients with
391 COVID-19. *International Journal of Infectious Diseases.* 2020;96:288–90.
- 392 23. Berlin DA, Gulick RM, Martinez FJ. Severe Covid-19. *N Engl J Med.* Massachusetts Medical
393 Society; 2020;
- 394 24. Verity R, Okell LC, Dorigatti I, Winskill P, Whittaker C, Imai N, et al. Estimates of the severity
395 of coronavirus disease 2019: a model-based analysis. *Lancet Infect Dis.* 2020;20:669–77.

- 396 25. CDC COVID-19 Response Team. Severe Outcomes Among Patients with Coronavirus Disease
397 2019 (COVID-19) - United States, February 12-March 16, 2020. *MMWR Morb Mortal Wkly Rep*.
398 2020;69:343–6.
- 399 26. Kong D, Zheng Y, Wu H, Pan H, Wagner AL, Zheng Y, et al. Pre-symptomatic transmission of
400 novel coronavirus in community settings. *Influenza Other Respir Viruses*. 2020;14:610–4.
- 401 27. Furukawa NW, Brooks JT, Sobel J. Evidence Supporting Transmission of Severe Acute
402 Respiratory Syndrome Coronavirus 2 While Presymptomatic or Asymptomatic. *Emerg Infect Dis*
403 [Internet]. 2020 [cited 2020 Aug 8];26. Available from:
404 <https://www.ncbi.nlm.nih.gov/pmc/articles/PMC7323549/>
- 405 28. Mizumoto K, Kagaya K, Zarebski A, Chowell G. Estimating the asymptomatic proportion of
406 coronavirus disease 2019 (COVID-19) cases on board the Diamond Princess cruise ship,
407 Yokohama, Japan, 2020. *Eurosurveillance* [Internet]. 2020 [cited 2020 Apr 5];25. Available from:
408 <https://www.eurosurveillance.org/content/10.2807/1560-7917.ES.2020.25.10.2000180>
- 409 29. Bai Y, Yao L, Wei T, Tian F, Jin D-Y, Chen L, et al. Presumed Asymptomatic Carrier
410 Transmission of COVID-19. *JAMA. American Medical Association*; 2020;323:1406–7.
- 411 30. Bureau of Statistics. Zhejiang Provincial Bureau of Statistics: Sixth Census Data [Internet].
412 2014 [cited 2020 Jul 30]. Available from:
413 http://tjj.zj.gov.cn/art/2014/9/3/art_1530851_20980968.html
- 414 31. Zhang J, Litvinova M, Liang Y, Wang Y, Wang W, Zhao S, et al. Changes in contact patterns
415 shape the dynamics of the COVID-19 outbreak in China. *Science*. 2020;368:1481–6.
- 416 32. Zhang J, Klepac P, Read JM, Rosello A, Wang X, Lai S, et al. Patterns of human social contact
417 and contact with animals in Shanghai, China. *Scientific Reports. Nature Publishing Group*;
418 2019;9:15141.
- 419 33. Chong KC, Cheng W, Zhao S, Ling F, Mohammad KN, Wang MH, et al. Monitoring disease
420 transmissibility of 2019 novel coronavirus disease in Zhejiang, China. *International Journal of*
421 *Infectious Diseases*. 2020;96:128–30.
- 422 34. Luo L, Liu D, Liao X, Wu X, Jing Q, Zheng J, et al. Contact Settings and Risk for Transmission in
423 3410 Close Contacts of Patients With COVID-19 in Guangzhou, China: A Prospective Cohort
424 Study. *Ann Intern Med. American College of Physicians*; 2020;173:879–87.
- 425 35. Long Q-X, Tang X-J, Shi Q-L, Li Q, Deng H-J, Yuan J, et al. Clinical and immunological
426 assessment of asymptomatic SARS-CoV-2 infections. *Nat Med. Nature Publishing Group*;
427 2020;26:1200–4.
- 428 36. Lee S, Kim T, Lee E, Lee C, Kim H, Rhee H, et al. Clinical Course and Molecular Viral Shedding
429 Among Asymptomatic and Symptomatic Patients With SARS-CoV-2 Infection in a Community
430 Treatment Center in the Republic of Korea. *JAMA Internal Medicine*. 2020;180:1447–52.

- 431 37. Bolstad WM, Curran JM. Introduction to Bayesian statistics. John Wiley & Sons; 2016.
- 432 38. Wikle CK, Berliner LM. A Bayesian tutorial for data assimilation. *Physica D: Nonlinear*
433 *Phenomena*. 2007;230:1–16.
- 434 39. Gelman A, Carlin JB, Stern HS, Dunson DB, Vehtari A, Rubin DB. *Bayesian Data Analysis,*
435 *Third Edition*. CRC Press; 2013.
- 436 40. Soetaert K, Petzoldt T, Setzer RW. Solving Differential Equations in R: Package deSolve.
437 *Journal of Statistical Software*. 2010;33:1–25.
- 438 41. Wolodzko T, Wolodzko MT. Package ‘extraDistr.’ 2017;
- 439 42. Perperoglou A, Sauerbrei W, Abrahamowicz M, Schmid M. A review of spline function
440 procedures in R. *BMC Medical Research Methodology*. 2019;19:46.
- 441 43. Flaxman S, Mishra S, Gandy A, Unwin HJT, Mellan TA, Coupland H, et al. Estimating the
442 effects of non-pharmaceutical interventions on COVID-19 in Europe. *Nature*. Nature Publishing
443 Group; 2020;584:257–61.
- 444 44. Esposito S, Principi N. To mask or not to mask children to overcome COVID-19. *Eur J Pediatr*.
445 2020;179:1267–70.
- 446 45. Dong Y, Mo X, Hu Y, Qi X, Jiang F, Jiang Z, et al. Epidemiology of COVID-19 Among Children in
447 China. *Pediatrics*. American Academy of Pediatrics; 2020;145:e20200702.
- 448 46. Zhou F, Yu T, Du R, Fan G, Liu Y, Liu Z, et al. Clinical course and risk factors for mortality of
449 adult inpatients with COVID-19 in Wuhan, China: a retrospective cohort study. *The Lancet*.
450 2020;395:1054–62.
- 451 47. He X, Lau EHY, Wu P, Deng X, Wang J, Hao X, et al. Temporal dynamics in viral shedding and
452 transmissibility of COVID-19. *Nature Medicine*. Nature Publishing Group; 2020;26:672–5.
- 453 48. Liu Y, Yan L-M, Wan L, Xiang T-X, Le A, Liu J-M, et al. Viral dynamics in mild and severe cases
454 of COVID-19. *The Lancet Infectious Diseases*. 2020;20:656–7.
- 455 49. Fauci AS, Lane HC, Redfield RR. Covid-19 — Navigating the Uncharted. *New England Journal*
456 *of Medicine*. 2020;382:1268–9.
- 457 50. García LF. Immune Response, Inflammation, and the Clinical Spectrum of COVID-19. *Front*
458 *Immunol*. 2020;11:1441.
- 459 51. Oran DP, Topol EJ. Prevalence of Asymptomatic SARS-CoV-2 Infection: A Narrative Review.
460 *Ann Intern Med*. 2020;173:362–7.

461 52. Czeisler MÉ, Tynan MA, Howard ME, Honeycutt S, Fulmer EB, Kidder DP, et al. Public
462 attitudes, behaviors, and beliefs related to COVID-19, stay-at-home orders, nonessential
463 business closures, and public health guidance—United States, New York City, and Los Angeles,
464 May 5–12, 2020. *Morbidity and Mortality Weekly Report*. Centers for Disease Control and
465 Prevention; 2020;69:751.

466 53. Felsenstein S, Hedrich CM. COVID-19 in children and young people. *The Lancet*
467 *Rheumatology*. Elsevier; 2020;2:e514–6.

468 54. Bedford J, Enria D, Giesecke J, Heymann DL, Ihekweazu C, Kobinger G, et al. COVID-19:
469 Towards controlling of a pandemic. *The Lancet*. 2020;395:1015–8.

470

471 Tables and Figures

472 Table 1. The definitions of compartments.

473 Figure 1. Compartmental model for SARS-CoV-2 transmission, where “ j ” represents another age
474 group different from “ i ” for the compartments.

475 Figure 2. (A) The estimated transmissibility and 95% credible intervals for each age group; (B)
476 The ratios of asymptomatic transmissibility to symptomatic transmissibility for seven age
477 groups.

478 Figure 3. The proportion of asymptomatic infections and unconfirmed asymptomatic infections
479 until February 22nd, 2020 for seven age groups.

480 Figure 4. The estimated dynamics of the epidemic and the transmission burdens from
481 symptomatic and asymptomatic cases. (A): The estimated numbers of daily new transmissions
482 with 95% credible intervals and the observed numbers of daily reported new confirmed cases
483 from January 7th to February 21st, 2020; (B) The observed numbers of daily reported new
484 confirmed symptomatic (R_{cs}) and asymptomatic cases (R_{ca}) and the estimated numbers of
485 daily new cases that failed to be detected (R_h) with 95% credible intervals; (C): The estimated
486 numbers of infected individuals caused by symptomatic and asymptomatic transmission over
487 time, with 95% credible intervals; (D): Corresponding proportions of symptomatic and
488 asymptomatic transmissions over different time periods.

489 Figure 5. The burden of transmission caused by different ages. (A) The estimated (contribution)
490 ratios of new transmissions from different ages over different time periods; (B) The estimated
491 (contribution) ratios of symptomatic and asymptomatic transmission from different ages. The
492 contribution ratio of each age group is calculated by the proportion of the transmissions caused
493 by the corresponding age group to the number of all transmissions in each transmission type,
494 from January 7th to February 1st, 2020.

495

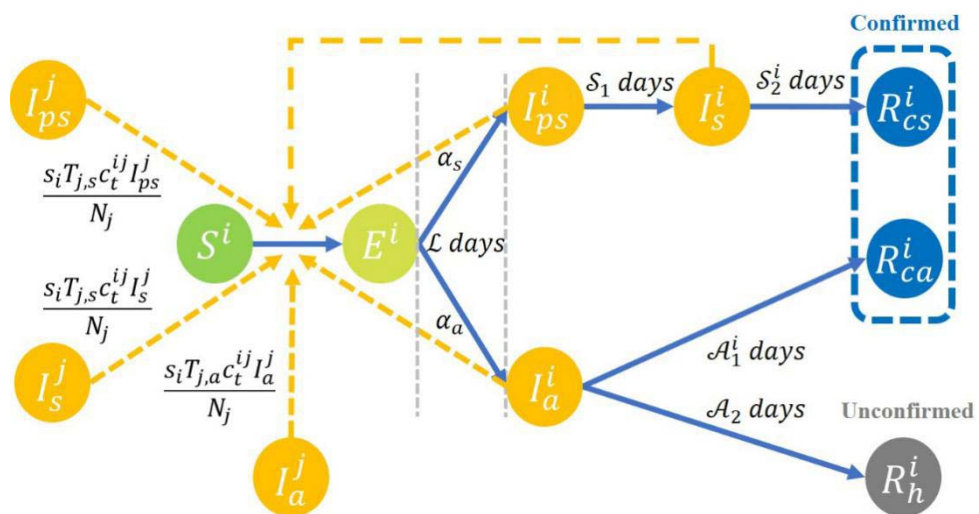
496

Table 1. The definitions of compartments

Compartments	Meaning
S^i	Represents the individuals who are susceptible to the infectious disease.
E^i	Represents the individuals who are exposed to the infectious disease but are not infectious. The individuals of E would transfer to I_{ps} or I_a with proportion α_s^i and α_a^i for different ages after latent period \mathcal{L} .
I_{ps}^i	Represents the symptomatic infectious individuals before symptom onset, which would transfer to I_s^i after the period of pre-symptomatic transmission \mathcal{S}_1 .
I_s^i	Represents the symptomatic infectious individuals after symptom onset, which would transfer to R_{cs}^i after the period of symptomatic transmission \mathcal{S}_2^i .
I_a^i	Represents the asymptomatic infectious individuals, which would transfer to R_{ca}^i (confirmed by testing after \mathcal{A}_1^i days for different ages) or R_h^i (self-recovered after \mathcal{A}_2 days) eventually.
R_{cs}^i, R_{ca}^i and R_h^i	Represents the individuals assumed to be noninfectious and immune to the disease in the first wave of Zhejiang epidemic (roughly two months).

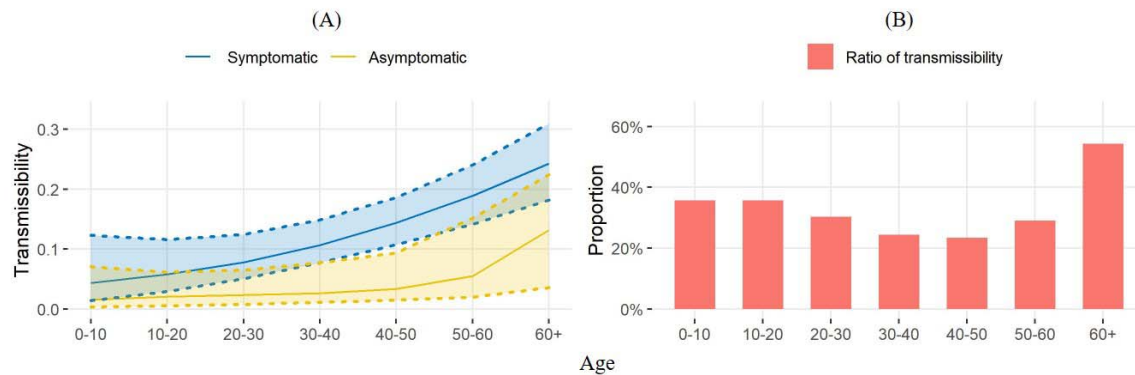
497

498 Figure 1. Compartmental model for SARS-CoV-2 transmission, where “j” represents another age
 499 group different from “i” for the compartments.



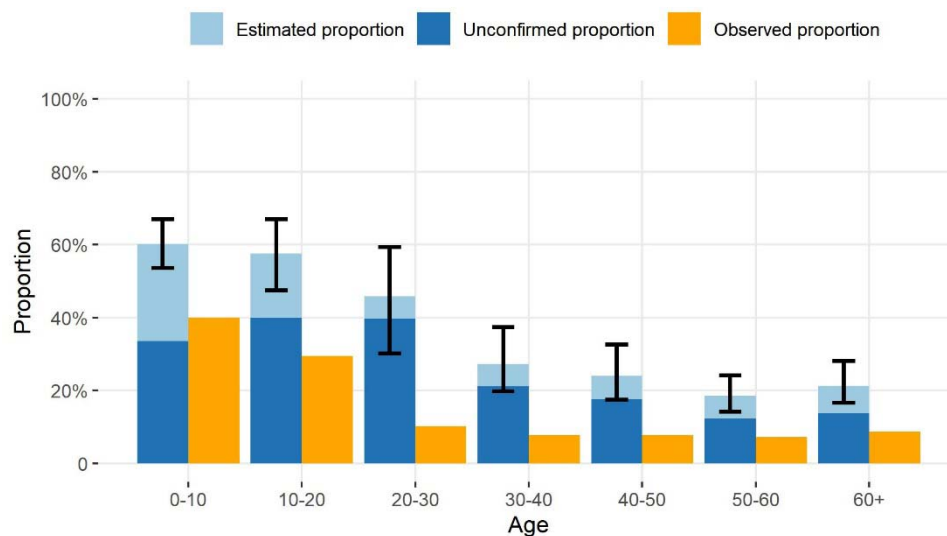
500

501 Figure 2. (A) The estimated transmissibility and 95% credible intervals for each age group; (B)
502 The ratios of asymptomatic transmissibility to symptomatic transmissibility for seven age
503 groups.



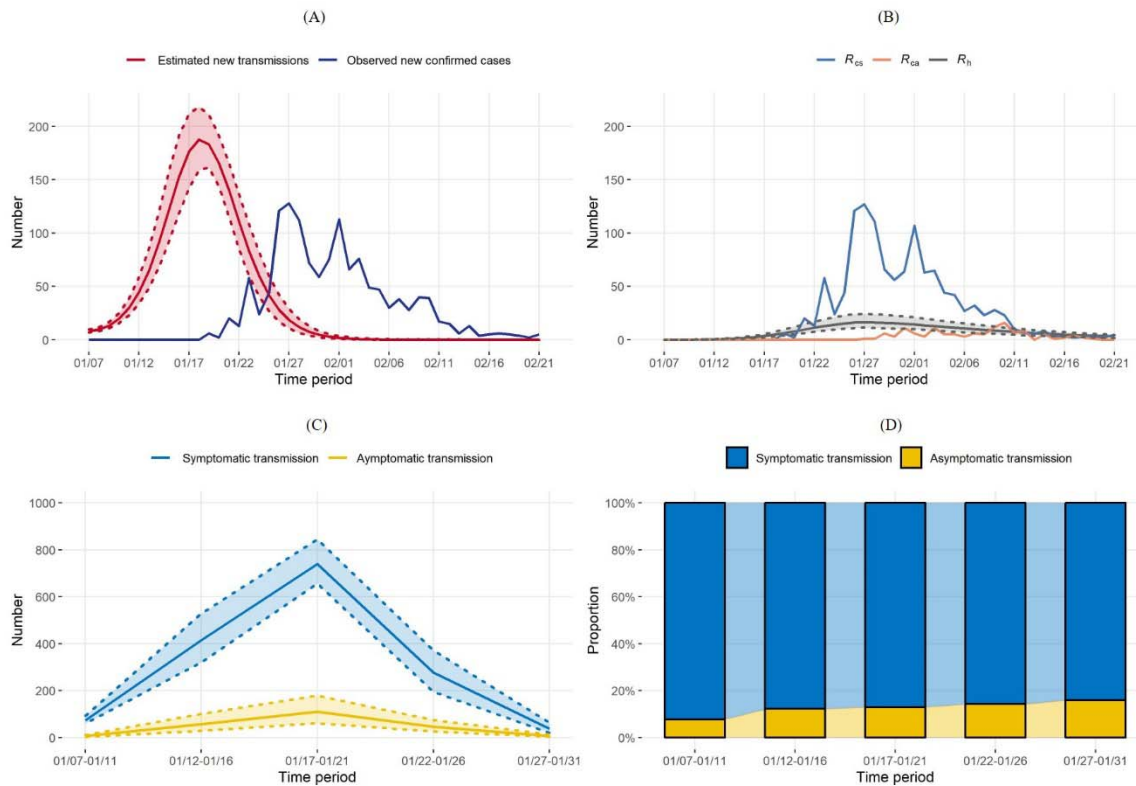
504

505 Figure 3. The proportion of asymptomatic infections and unconfirmed asymptomatic
506 infections until February 22nd, 2020 for seven age groups. The estimated proportions of
507 asymptomatic cases, the proportions of cases that failed to be detected among asymptomatic
508 infections (unconfirmed proportions), and the observed proportions of asymptomatic cases are
509 defined as: $\frac{R_h^i + R_{ca}^i}{R_h^i + R_{cs}^i + R_{ca}^i}$, $\frac{R_h^i}{R_h^i + R_{ca}^i}$, and $\frac{R_{ca}^i}{R_{cs}^i + R_{ca}^i}$, respectively. The 95% credible intervals for the
510 estimated proportions of asymptomatic cases are shown for each age group.



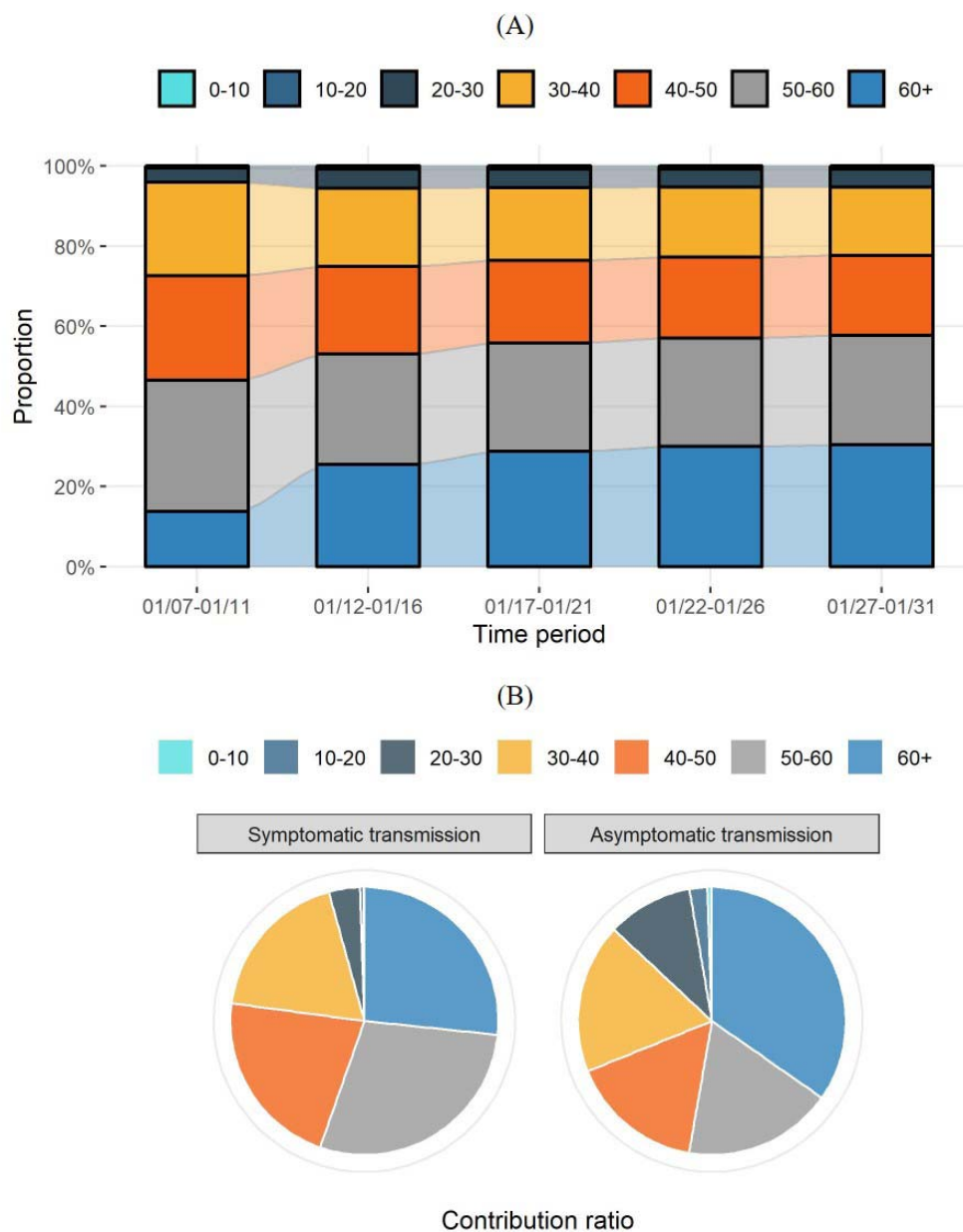
511

512 Figure 4. The estimated dynamics of the epidemic and the transmission burdens from
 513 symptomatic and asymptomatic cases. (A): The estimated numbers of daily new transmissions
 514 with 95% credible intervals and the observed numbers of daily reported new confirmed cases
 515 from January 7th to February 21st, 2020; (B) The observed numbers of daily reported new
 516 confirmed symptomatic (R_{cs}) and asymptomatic cases (R_{ca}) and the estimated numbers of
 517 daily new cases that failed to be detected (R_h) with 95% credible intervals; (C): The estimated
 518 numbers of infected individuals caused by symptomatic and asymptomatic transmission over
 519 time, with 95% credible intervals; (D): Corresponding proportions of symptomatic and
 520 asymptomatic transmissions over different time periods.



521

522 Figure 5. The burden of transmission caused by different ages. (A) The estimated (contribution)
 523 ratios of new transmissions from different ages over different time periods; (B) The estimated
 524 (contribution) ratios of symptomatic and asymptomatic transmission from different ages. The
 525 contribution ratio of each age group is calculated by the proportion of the transmissions caused
 526 by the corresponding age group to the number of all transmissions in each transmission type,
 527 from January 7th to February 1st, 2020.



528