

30 **ABSTRACT**

31 Coronavirus disease 2019 (COVID-19) has caused considerably morbidity and mortality
32 worldwide, mainly among older adults. Hospital outbreaks contribute to the burden of this
33 disease, despite optimal hand hygiene and personal protective equipment such as masks
34 and face shields. Ventilation with fresh outdoor air has emerged as an important strategy to
35 reduce indoor aerosol transmission of COVID-19. Carbon dioxide (CO₂) monitors are
36 increasingly advocated to facilitate ventilation in schools, long-term care facilities, offices and
37 public buildings. Moreover, several health authorities have issued guidelines for target CO₂
38 values in work as well as clinical environments. Given that modern hospitals have superior
39 indoor air quality control systems, it remains however unknown whether feedback from CO₂
40 monitors is needed and/or effective to improve ventilation further. Here, we describe the
41 rationale and protocol for a randomized, sham-controlled, crossover, open label trial of CO₂
42 monitors in double-bed hospital rooms in two acute geriatric wards. Based on pilot data,
43 Aranet4 Home[®] monitors will be used to alert nurses and other staff to raised indoor CO₂
44 concentrations. Practical limitations in implementing CO₂ monitors are discussed, and will be
45 surveyed among staff as additional study outcomes. The Monitors to Improve Indoor Carbon
46 Dioxide (CO₂) Concentrations in the Hospital (MICH) trial is registered at ClinicalTrials.gov,
47 identifier: [NCT04770597](https://clinicaltrials.gov/ct2/show/study/NCT04770597) .

48

49 **Keywords:** Carbon dioxide; coronavirus disease 2019; Geriatrics; Healthcare-associated
50 Infections; Hospitals; Ventilation.

51

52 **1. INTRODUCTION**

53 The coronavirus disease 2019 (COVID-19) pandemic has posed a high burden on societies,
54 healthcare systems and long-term care facilities worldwide. COVID-19 has caused
55 considerably morbidity and mortality, particularly in frail older adults [1], [2]. While there is
56 little direct evidence for any transmission route, there is accumulating evidence for
57 respiratory transmission of severe acute respiratory syndrome coronavirus 2 (SARS-CoV-2,
58 the virus which causes COVID-19), not only via droplets but also via smaller particles in
59 aerosols, mainly in closed spaces [3], [4], [5].

60 Nosocomial transmission contributes to the incidence and mortality of COVID-19 [2], [6], [7].
61 Acute medical and surgical wards in particular host many older adults close together.
62 Therefore, unprecedented infection control measures have been implemented in hospitals
63 since 2020. These include universal mask wearing by patients and caregivers, increased
64 attention to hand and surface disinfection, and screening patients and/or staff for SARS-CoV-
65 2 [8]. Other measures include physical distancing among staff and use of mobile high-
66 efficiency particulate air (HEPA)-filters. Nevertheless, clusters of SARS-CoV-2 transmission
67 have been documented despite all these countermeasures [6]. Exposure to an infected
68 patient for at least 15 minutes is a documented risk factor in this regard [6].

69 Ventilation with fresh outdoor air is increasingly highlighted as a strategy to avoid indoor
70 aerosol transmission of respiratory pathogens [9]. One convenient surrogate parameter for
71 ventilation in this context, is the indoor carbon dioxide (CO₂) concentration [10]. Humans
72 exhale CO₂ at concentrations of almost 40 000 p.p.m. [11], compared to outdoor
73 concentrations which have increased in recent years to values averaging ~450 p.p.m.
74 (fluctuating between 400-500 p.p.m.). Thus, in the absence of combustion, animals and
75 certain chemical reactions (which also produce CO₂) or plants (which catalyze CO₂ during
76 photosynthesis), the increase in CO₂ concentrations above outdoor levels, reflects the indoor
77 concentration of human exhaled air (potentially carrying respiratory pathogens). The total
78 amount of CO₂ which humans exhale is determined by their respiratory minute volume or
79 oxygen consumption (which correlates with physical activity) and their metabolic respiratory
80 quotient (ratio of CO₂ exhaled to oxygen consumed, which is influenced by diet and
81 metabolic factors). Rudnik & Milton reported that under average circumstances, an indoor
82 CO₂ concentration > 380 p.p.m. above outside levels implies that inhaled air contains 1%
83 exhaled air [11]. In turn, this rebreathed fraction or “shared air” correlates with the basic
84 reproductive number of respiratory infections [11]. On the other hand, increased ventilation
85 (particularly displacement ventilation [12]) could also facilitate spreading of pathogens if the
86 air flows from the contaminant source towards susceptible, unmasked individuals [13], [14].

87 There is no universal agreement on optimal cut-offs for indoor CO₂ concentrations in general,
88 or in the context of COVID-19 in particular. Regulatory bodies in several countries have
89 proposed guidelines to maintain indoor CO₂ concentrations below values typically ranging
90 from 800 to 1000 p.p.m. [15], [16], [17]. One COVID-19 cluster in a Dutch nursing home was
91 associated with the use of an energy-saving CO₂-driven ventilation system, which maintained
92 indoor CO₂ concentrations around 1000 p.p.m. [18]. It should be noted that indoor air quality
93 standards for buildings sometimes refer to *average* CO₂ levels over *prolonged* time periods
94 (e.g. 8 hours [19]), although the risk of respiratory infections also applies to shorter
95 exposures [6], [11].

96 As the COVID-19 pandemic continues, CO₂ monitors are increasingly deployed and
97 recommended (for example, in countries like Germany or Norway [17]) to monitor ventilation
98 and prevent aerosol transmission of SARS-CoV-2 in schools, long-term care facilities, offices
99 and public buildings [15], [17], [20]. Some experts have called for the use of CO₂ monitors by
100 nurses in hospitals and nursing homes too [20]. However, empirical evidence supporting the
101 use of CO₂ monitors to improve ventilation (let alone to prevent COVID-19) in any setting is
102 lagging behind.

103 Modern hospitals, particularly operating and delivery rooms, intensive care units and
104 microbiology laboratories, are equipped with superior heating, ventilation and air conditioning
105 (HVAC) systems, which also remove particles via HEPA filters. For normal patient rooms
106 however, the recommended outdoor and total air change rates per hour are only 2 and 4,
107 respectively [21]. While these rates may be sufficient to meet indoor air quality requirements
108 for patients, they may be temporarily insufficient when patient rooms are crowded by visitors
109 or healthcare staff. Indeed, physical distancing and limiting occupant density, which are
110 commonly recommended in stores, offices and public buildings, are challenging in hospitals,
111 since patients depend on caregivers. In one study, CO₂ production in hospital rooms
112 correlated with room entries (indicated by infrared beam breaks) [22]. Moreover, opening
113 windows in hospital may be avoided due to thermal and draft discomfort [13], [23] or risk of
114 patient injury from falling out the window [24].

115 Few studies have actually reported indoor CO₂ concentrations in hospitals [13].
116 Inappropriately high CO₂ concentrations have been reported in hospitals without modern
117 HVAC systems in Brazil (reaching peaks over 3000 p.p.m) [25] and China (daily averages >
118 1000 p.p.m.) [23]. In contrast, excellent CO₂ values were reported in an Iranian intensive
119 care unit [26] and a new hospital building in the United States (daily *average* CO₂ < 150
120 p.p.m. above outside levels) [22]. A French study reported maximal CO₂ concentrations of
121 1121 to 1325 p.p.m. in a hospital nursing care room and plaster room, respectively [27]. In a

122 Taiwanese four-bed intensive care unit room, CO₂ levels (range 828-1570 p.p.m.) were
123 above 1000 p.p.m. during visitor hours 92% of the year [28]. Another study from Taiwan
124 reported that among hospital sites, patient wards had the highest average CO₂ concentration
125 (1063 ± 483 p.p.m., N=3 hospitals) [29]. Thus, it is clear that despite guidelines for hospital
126 HVAC systems and CO₂ targets in buildings, ventilation in regular wards may be worse than
127 commonly appreciated. Most studies have reported daily average CO₂ levels or maximal
128 levels during short measurement periods. More research is needed not only to provide a
129 more detailed overview of indoor CO₂ fluctuations in hospital rooms, but even more so to
130 define optimal strategies to maintain CO₂ below recommended maximum levels.
131 Interestingly, Yang *et al.* reported daily peaks > 1000 p.p.m. in the hospital environment,
132 which could be mitigated using an integrated monitoring system which alerted medical
133 supervisors and automatically activated ventilation [19].

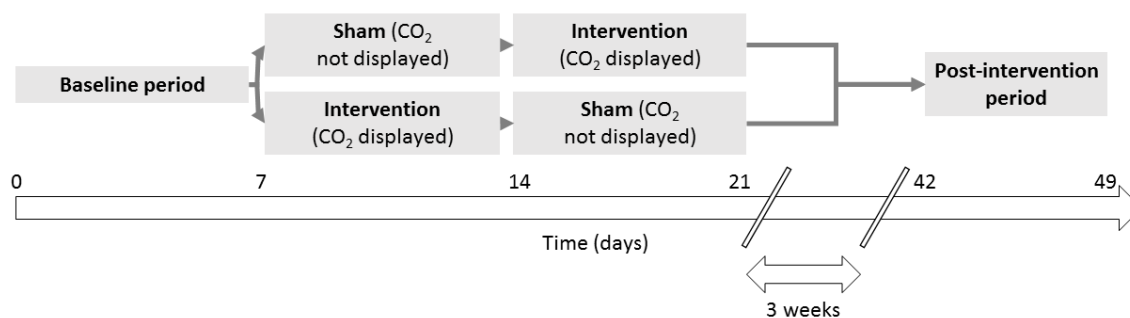
134 Given this background, the authors launched a prospective interventional study to assess the
135 efficacy and feasibility of monitors to maintain indoor CO₂ concentrations in their hospital
136 below 800 – 1000 p.p.m. Here, we describe the rationale and pilot data supporting the design
137 and protocol of the “Monitors to Improve Indoor Carbon Dioxide Concentrations in the
138 Hospital” (MICH) randomized trial.

139 **2. PROTOCOL**

140 This trial protocol (version 2.0, April 9th, 2020) is reported in accordance with the Standard
141 Protocol Items: Recommendations for Interventional Trials (SPIRIT) 2013 statement [30].
142 The SPIRIT checklist is provided (**Supplementary Table 1**).

143 **2.1. Study design**

144 This study is a randomized, sham-controlled, open-label, crossover superiority trial,
145 performed consecutively in two acute geriatric wards. In each ward, six double bed rooms
146 will be fitted with Aranet4 Home[®] CO₂ monitors, which constitute the unit of randomization.
147 The crossover design involves three phases, each lasting seven days (**Figure 1**).



148

149 **Figure 1: Study design overview.**

- 150 1. **Pre-intervention (baseline) period (1 week):** all monitors facing downwards, with
151 staff blinded to measurements.
- 152 2. **Intervention period (2 x 1 weeks):** Each monitor will be randomized either to be
153 visible to the clinical staff for one week, or in the sham-controlled group, to be turned
154 with the screen facing downwards for one week. After one week, the monitors cross
155 over to the other group (AB/BA crossover design) for one week. After two weeks, the
156 sensors will be removed from the first ward and moved for three weeks to the second
157 ward. Thus, the duration of the trial is seven weeks per ward, and ten weeks in total.
- 158 3. **Post-intervention period (1 week):** after a three week interval, the sensors are
159 again installed in six double-bed rooms, with their display facing downwards and staff
160 blinded to the measurements.

161 Given the open-label design, the sham-control group was chosen to take potential
162 observation bias (Hawthorne effect) and carryover effects into account. The primary and
163 secondary endpoints will be compared between the active and sham-controlled groups in the
164 intervention phase. However, because we expect some carry-over effects from the
165 intervention to the sham groups, pre-planned analyses will compare the intervention against
166 the pre-intervention phase. Furthermore, comparison between the intervention and post-
167 intervention phase will allow us to investigate whether significant wear-off effects can be
168 demonstrated or not.

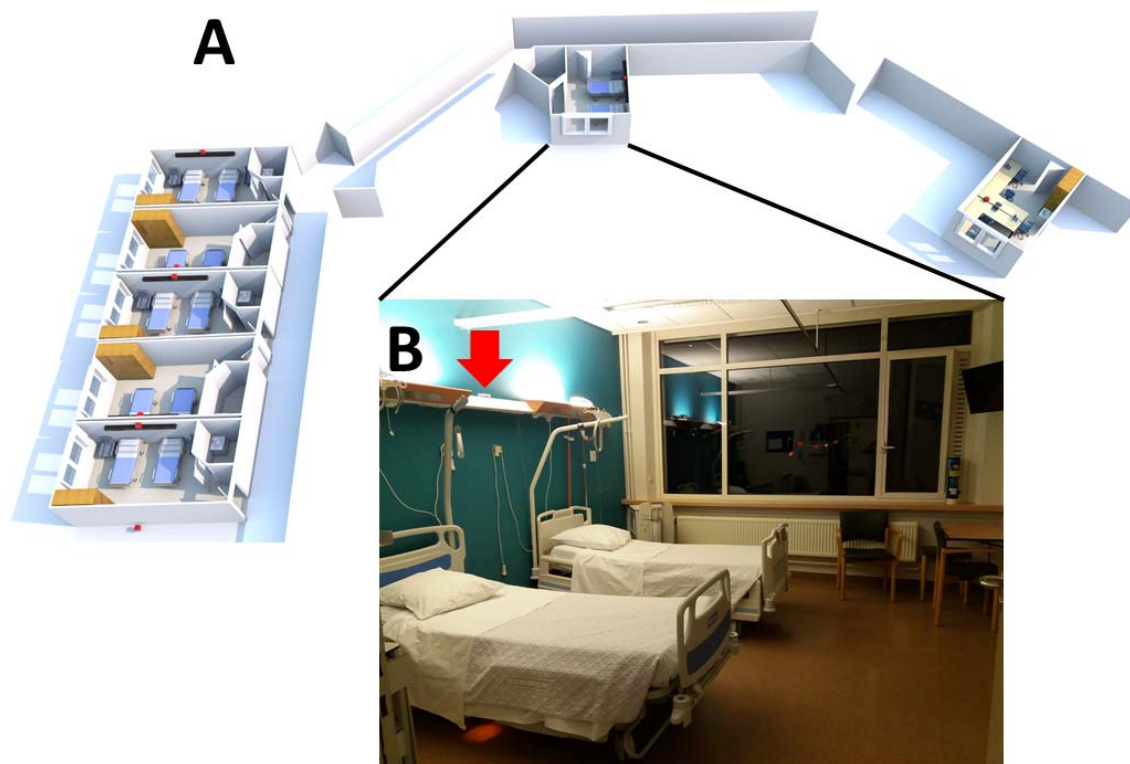
169 Sensors will be randomized by the investigators to the sham/intervention or
170 intervention/sham arm respectively, immediately prior to the intervention using an online
171 random sequence generator (1:1 ratio, N = 1 block size). Due to the nature of the
172 intervention, allocation concealment is not possible. Investigators performing the analysis will
173 also not be blinded to intervention groups. However, the *a priori* statistical analysis plan and
174 the availability of data for independent review by other scientists mitigates the risk of bias
175 from this source. Data will be analyzed using the intention-to-treat principle, e.g. even when
176 the monitors in the sham group are unblinded or *vice versa*.

177 **2.2. Setting**

178 This single-center trial will run at the Geriatrics Department, which is located in the oldest
179 wing of Imelda general hospital in the rural area of Bonheiden, Belgium. The hospital is
180 surrounded by nature and there is no traffic or other nearby CO₂ source. Our department has
181 69 acute beds (single- and double-bed rooms) divided over three wards, and one
182 rehabilitation ward with 20 beds (transformed into a dedicated COVID-19 unit during the
183 study). Among general acute wards with standard air exchange rates, the Geriatric
184 Department was selected for several reasons. First, bed occupancy rate in the department is
185 typically > 90 %. Secondly, almost all patients require assistance from staff for activities of
186 daily living such as washing, dressing, meals *etc.* Thirdly, geriatrics has higher staffing levels
187 than other acute wards and many nursing students (up to 10/ward). All these elements
188 increase room crowding.

189 On the other hand, many older patients have low levels of physical activity and thus low
190 respiratory minute volumes. Visitors were also allowed very restrictively due to the ongoing
191 COVID-19 epidemic, typically only 1 hour/week during most of the study period (with
192 exceptions for patients receiving palliative care, which are however typically housed in single
193 rooms). The latter elements may be associated with lower indoor CO₂ concentrations.

194 For this study, we selected two acute wards with near-identical architecture, on the first and
195 second floor (our third ward having slightly more spacious rooms). All rooms recently had air
196 conditioning installed (cooling mode only). Outdoor CO₂ concentrations will be measured on
197 an unused terrace immediately adjacent to the wards. The position of the sensors, along with
198 the location and size of the respective double-bed rooms is illustrated in **Figure 2**. The
199 patient rooms all had a similar surface area of ~20-21 m² and a 3-4 m² bathroom. The
200 doctor's office is 23.5 m² and hosts 2 geriatricians, 1-2 registrars and 2-4 trainees.



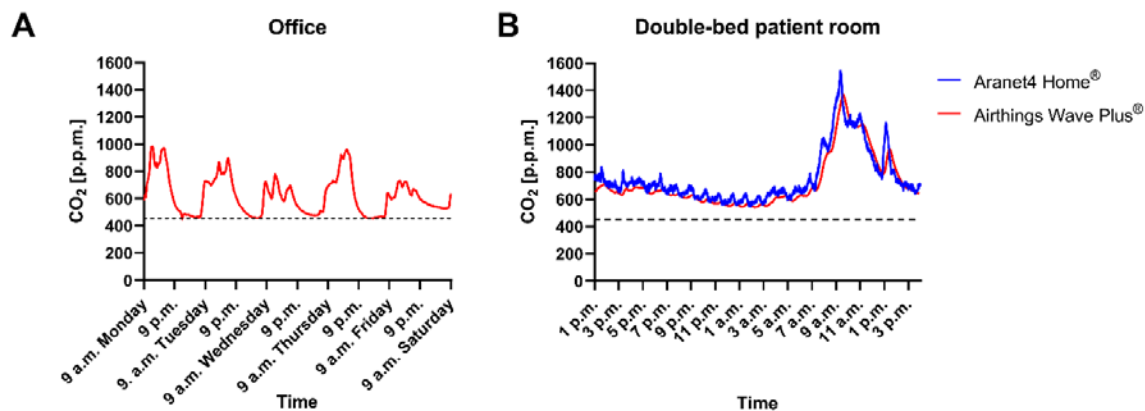
201

202 **Figure 2:** Position of the sensors and double-bed rooms during the study. **A:** Three-
203 dimensional representation of the ward showing the position of the six sensors (small red
204 squares) in the double-bed rooms, the doctor's office (*right*) and the outdoor CO₂ sensor
205 (*bottom left*). **B (inset):** Representative room photograph. The arrow indicates the position of
206 the sensor on the overhead light box.

207 2.3. Intervention

208 This study will use six Aranet4 Home[®] and one Airthings Wave Plus[®] monitor (measurement
209 ranges 0 – 9999 p.p.m. and 400 – 5000 p.p.m., respectively). Both monitors are
210 commercially available in Europe and use non-dispersive infra-red CO₂ sensors with $\pm 3\%$
211 accuracy reported by the manufacturer, and raw data logging with time stamps. The Aranet[®]
212 sensors are factory-calibrated, recommended for use in schools by the Federation of
213 European HVAC Associations [31], and have been shown to be reliable compared to
214 research-grade instruments and to reflect ventilation rates in a clinical environment [32]. The
215 Airthings[®] instrument was used after the seven-day self-calibration period. When we cross-
216 calibrated our devices (*i.e.*, putting all sensors next to each other), they displayed near-
217 identical values. We also compared the CO₂ values from Aranet4 Home[®] to a professional
218 indoor climate multimeter (Testo[®] 435-1) which showed identical measurement values. The
219 sensors will be placed in the room at a height between 1 and 2 meters and not near the
220 window or door.

221 Pilot data suggested that the highest CO₂ concentrations were observed in patient rooms
222 (**Figure 3**, and other data not shown), in line with previous literature [27]. When measured in
223 the doctor's office, CO₂ values peaked during office hours but remained < 1000 p.p.m.
224 (median 601 p.p.m., range 453 – 984 p.p.m.). We selected the Aranet4 Home[®] for use in the
225 patient rooms because, in contrast to the Airthings Wave Plus[®], it has a display showing
226 current CO₂ levels and because it can be set to bleep when threshold values are exceeded.
227 Moreover, it proved to be more responsive, which was partly but not completely explained by
228 its superior time-resolution (measurements possible at one-minute intervals, compared to 5
229 minutes with Airthings Wave Plus[®]), as shown in **Figure 3B**. Median (range) CO₂ values
230 were 653 p.p.m. (541 – 1367 p.p.m.) with the Airthings Wave Plus[®] vs. 689 p.p.m. (548 –
231 1540 p.p.m.) with Aranet4 Home[®], difference in medians -36 p.p.m. (95% confidence interval
232 -41 to -32, P < 0.0001 by Wilcoxon matched-pairs signed rank test). The values were not
233 normally distributed (P < 0.0001 D'Agostino-Pearson omnibus K2 test) and significantly
234 paired (Spearman rs 0.9344, P < 0.0001). The Aranet[®] monitor data will be analyzed using
235 two-minute bins due to ongoing technical problems with the stability of the Bluetooth[®]
236 connection to Android[®] devices. We will use the Airthings Wave Plus[®] to monitor outside CO₂
237 levels continuously during the trial.



238

239 **Figure 3. A:** Indoor CO₂ measured using Airthings Wave Plus[®] sensor in the doctor's office
240 (non-patient area) during one working week. CO₂ levels increased during office hours and
241 returned to outside CO₂ levels (*dashed line*) by next morning. One window and door
242 remained almost constantly open. Staff were blinded and unaware of measurements. **B:** Pilot
243 data showing indoor CO₂ concentrations in a double-bed patient room over a 27-hour period,
244 measured simultaneously with an Aranet4 Home[®] and an Airthings Wave Plus[®] monitor. A
245 slight delay can be seen as an offset with the Airthings Wave Plus[®] sensor. Staff were
246 blinded to measurements. Dashed line indicates median outdoor CO₂ concentrations.

247 At the start of the randomized intervention period, clinical staff on each ward will be educated
248 by the principal investigator on the purpose and methods of the trial and strategies to
249 improve ventilation. During the two-week intervention period, staff will be interviewed at least

250 every three days regarding difficulties in achieving CO₂ targets, and additional behavioral
251 interventions will be sought to facilitate implementation. For example, in the intervention
252 group, signs in the patient rooms will alert clinical staff to the ongoing experiment and CO₂
253 targets.

254 Following the two-week sham/intervention phase, an anonymous online survey will be sent to
255 ward staff to collect quantitative feedback regarding feasibility and preference to use CO₂
256 monitors (using a 10-point Likert scale). The survey will also collect feedback about whether
257 or not staff took action to increase ventilation, their knowledge about the primary CO₂ target
258 used during the study and the most important challenges to implement a CO₂ monitoring
259 strategy. We will specifically inquire about staff concerns for patient harms *e.g.* from cold or
260 draft discomfort. Hospital-wide COVID-19 clusters will be recorded during the study, but this
261 trial is not intended nor powered for clinical outcomes.

262 **2.4. Statistical analysis plan**

263 Our primary hypothesis (primary endpoint) is that the CO₂ monitors will record less time/day
264 (in minutes) with elevated CO₂ levels (> 800 p.p.m.) during the intervention period, compared
265 to the sham period. Intervention vs. sham control groups will be compared using unpaired t
266 test or Mann-Whitney U test, depending on whether or not the Gaussian distribution of the
267 data is rejected by the D'Agostino-Pearson (omnibus K2) normality test. Secondary
268 outcomes include the time with CO₂ > 1000 p.p.m. or > 1400 p.p.m. (which are the built-in
269 cut-off levels for orange and red warning lights on the Aranet[®] devices), analyzed using
270 similar statistics. Other outcomes include survey responses (see "Intervention" section
271 above).

272 It is possible (and allowed) that staff applies behaviors that influence CO₂ levels also in sham
273 rooms. Therefore, the crossover design is applied, with carry-over effects investigated by
274 comparing the Intervention periods to the baseline period. The four periods (baseline, sham,
275 intervention and post-intervention) will be analyzed by one-way ANOVA (or repeated
276 measures ANOVA, if the room-level values are significantly paired) with Dunn's multiple
277 comparisons post-test (or non-parametric Kruskal-Wallis test if not normally distributed)
278 comparing the intervention period against the baseline, sham and post-intervention periods
279 (3 comparisons). The only exclusion criterion is incomplete occupancy *i.e.* when the double-
280 bed rooms are not fully occupied before 12 *a.m.*, measurements from that day will be
281 excluded. Missing data will not be imputed.

282 *A priori*, we assume to interpret the results as follows:

- 283 • When the intervention vs. sham comparison is significant (regardless of the other
284 comparisons), an effect beyond sham will be assumed

- 285 ○ If this is the case, a significant difference between baseline and intervention
286 will be considered further supportive observational evidence of an intervention
287 carry-over effect (though not required to confirm the randomized intervention
288 vs. sham comparison)
- 289 ○ If this is the case, a significant difference between the intervention and post-
290 intervention phase will be considered supportive observational evidence of a
291 wear-off (or time trend) effect
- 292 ● If the intervention vs. baseline AND intervention vs. post-intervention comparison are
293 significant (but not intervention vs. sham, which could be masked by carry-over
294 effects), a pre-post effect of the intervention will be assumed.
- 295 ● If only the intervention vs. baseline comparison yields significant results, a
296 hypothesis-generating effect of the intervention could be considered.

297 Statistical analyses will be performed using GraphPad Prism software. Two-tailed α below
298 0.05 will be considered as significant. Due to lack of sufficient pilot data for robust power
299 calculation, we assume a conventional moderate effect size ($f = 0.25$). With an α error
300 probability of 0.05, power of 0.95 and four groups, we calculate total sample size at $n=280$.
301 With four groups, six sensors, two wards, seven days of measurements and expecting 15 %
302 excluded values due to unoccupied rooms ($N = 4 \times 6 \times 2 \times 7 \times 0.85 = 285.6$), our trial should
303 be powered to detect a moderate effect size. Power calculation was performed using
304 G*Power software version 3.1.9.7 (Kiel University, Germany).

305 **2.5. Ethics and trial registration**

306 The study was ethically reviewed by our Institutional Review Board on February 9th, 2021.
307 The Ethical Committee decided that the study did not require informed consent since the
308 design did not qualify as a human clinical trial according to applicable national and European
309 regulations. Only basic demographic data about the room occupants (*i.e.* age and sex) as
310 well as bed occupancy will be collected anonymously via the electronic health record
311 database. Still, the head nurses of each ward provided verbal consent to participate
312 voluntarily in the study, and all staff members were free to adhere to recommendations to
313 apply mitigation strategies to avoid high indoor CO₂ levels or not. There is no funding
314 involved in this trial.

315 The trial protocol was registered with ClinicalTrials.gov on February 21st, 2021 (and
316 published on February 25th, 2021) at: <https://clinicaltrials.gov/ct2/show/NCT04770597> .
317 Previous and future protocol amendments will be registered before publication of the results.
318 The full set of data supporting the trial will be made available to established investigators

319 upon simple request. The authors plan to disseminate the results through international peer-
320 reviewed scientific journals.

321 **3. DISCUSSION**

322 We report here the background, rationale and pilot data that led us to the design of the
323 Monitors to Improve Indoor Carbon Dioxide Concentrations in the Hospital (MICH) trial.

324 There is little doubt that CO₂ monitors can cheaply and accurately measure CO₂ levels in a
325 hospital environment. However, like any technology, implementation requires a behavioral
326 change on the part of caregivers. Thus, our trial classifies as “implementation science”,
327 aiming mainly to determine whether nurses and other staff will look at the monitors and
328 increase ventilation, *e.g.* by operating available HVAC systems, opening windows and/or
329 altering their daily caregiving routines. Indeed, excessive CO₂ levels are caused both by
330 raised production by occupants (too many staff members crowding patient rooms for
331 prolonged times) as well as insufficient CO₂ removal by ventilation. Significant difficulties are
332 expected to implement such behavioral changes, *e.g.* because caregivers have many other
333 responsibilities, may resist alterations in their work routines, out of concern that increased
334 ventilation leads to draft or temperature discomfort to patients and staff, or concern that
335 windows must remain closed to prevent patients from falling out.

336 A criterion of 10 m² space per person is often recommended to allow social distancing in
337 schools, offices and shops. Given the size of our patient rooms and doctor's office, it is clear
338 that these limits are adequate on average, but that they can be temporarily exceeded by staff
339 occupancy. For example, our doctor's office size is appropriate for two staff geriatricians, but
340 it does not take into account the 3-6 trainees which also need office space. Hospital space is
341 perennially constrained, and the COVID-19 pandemic has spurred further chaotic
342 reorganizations of wards and offices. Thus, continuous attention to office space occupancy in
343 hospitals is required. Moreover, given secular trends in outdoor CO₂ concentrations, ideally
344 CO₂ levels would be monitored simultaneously indoors and outdoors, and referred to in
345 guidelines as p.p.m. above outdoor values, rather than as absolute indoor levels.

346 A major limitation is that our trial is not designed nor powered to determine whether CO₂
347 monitors reduce the risk of hospital-acquired infections including COVID-19. A first step we
348 want to investigate is whether staff can demonstrate behavioral changes in response to the
349 monitors –if not, then any clinical benefit appears unlikely, and simply recommending
350 monitors with the expectation that they by themselves maintain appropriate CO₂ levels in a
351 clinical environment would be premature. Moreover, CO₂ is an imperfect proxy of respiratory

352 infection risk. Masks or HEPA filters, loud vocalization [33], [34] or physical distancing for
353 example, affect pathogen transmission risk without influencing CO₂ levels, while respiratory
354 quotient influences CO₂ production independent of exhaled air volume. Another limitation of
355 our trial protocol is the single-center open-label design. The latter could not be avoid but
356 makes our findings susceptible to observation bias (Hawthorne effect). Due to lack of
357 sufficient pilot data, a generic power calculation strategy was applied. Still, to the best of our
358 knowledge, this is the first randomized trial aimed to provide a much needed evidence base
359 regarding the effectiveness of CO₂ monitors in the hospital environment.

360 4. REFERENCES

- 361 1. Arons MM, Hatfield KM, Reddy SC, Kimball A, James A, Jacobs JR, et al.
362 Presymptomatic SARS-CoV-2 Infections and Transmission in a Skilled Nursing Facility. *N*
363 *Engl J Med.* 2020;382(22):2081-90.
- 364 2. De Smet R, Mellaerts B, Vandewinckele H, Lybeert P, Frans E, Ombelet S, et al.
365 Frailty and Mortality in Hospitalized Older Adults With COVID-19: Retrospective
366 Observational Study. *J Am Med Dir Assoc.* 2020;21(7):928-32 e1.
- 367 3. Tang JW, Bahnfleth WP, Bluysen PM, Buonanno G, Jimenez JL, Kurnitski J, et al.
368 Dismantling myths on the airborne transmission of severe acute respiratory syndrome
369 coronavirus-2 (SARS-CoV-2). *J Hosp Infect.* 2021;110:89-96.
- 370 4. Meyerowitz EA, Richterman A, Gandhi RT, Sax PE. Transmission of SARS-CoV-2: A
371 Review of Viral, Host, and Environmental Factors. *Ann Intern Med.* 2021;174(1):69-79.
- 372 5. Greenhalgh T, Jimenez JL, Prather KA, Tufekci Z, Fisman D, Schooley R. Ten
373 scientific reasons in support of airborne transmission of SARS-CoV-2. *Lancet.* 2021.
- 374 6. Klompas M, Baker MA, Rhee C, Tucker R, Fiumara K, Griesbach D, et al. A SARS-
375 CoV-2 Cluster in an Acute Care Hospital. *Ann Intern Med.* 2021.
- 376 7. Rose C. Am I Part of the Cure or Am I Part of the Disease? Keeping Coronavirus Out
377 When a Doctor Comes Home. *N Engl J Med.* 2020;382(18):1684-5.
- 378 8. Hogan CA, Gombar S, Wang H, Roltgen K, Shi RZ, Holubar M, et al. Large-Scale
379 Testing of Asymptomatic Healthcare Personnel for Severe Acute Respiratory Syndrome
380 Coronavirus 2. *Emerg Infect Dis.* 2021;27(1).
- 381 9. Belosi F, Conte M, Gianelle V, Santachiara G, Contini D. On the concentration of
382 SARS-CoV-2 in outdoor air and the interaction with pre-existing atmospheric particles.
383 *Environ Res.* 2021;193:110603.
- 384 10. Peng Z, Jimenez JL. Exhaled CO₂ as a COVID-19 Infection Risk Proxy for Different
385 Indoor Environments and Activities. *Environ Sci Technol Lett.* 2021;published online.
- 386 11. Rudnick SN, Milton DK. Risk of indoor airborne infection transmission estimated from
387 carbon dioxide concentration. *Indoor Air.* 2003;13(3):237-45.

- 388 12. Qian H, Li Y, Nielsen PV, Hyldgaard CE, Wong TW, Chwang AT. Dispersion of
389 exhaled droplet nuclei in a two-bed hospital ward with three different ventilation systems.
390 *Indoor Air*. 2006;16(2):111-28.
- 391 13. Shajahan A, Culp CH, Williamson B. Effects of indoor environmental parameters
392 related to building heating, ventilation, and air conditioning systems on patients' medical
393 outcomes: A review of scientific research on hospital buildings. *Indoor Air*. 2019;29(2):161-
394 76.
- 395 14. Memarzadeh F, Xu W. Role of air changes per hour (ACH) in possible transmission of
396 airborne infections. *Build Simul*. 2012;5(1):15-28.
- 397 15. Superior Health Council of Belgium. Recommendations on the use, outside hospitals
398 and care institutions, of passive ventilation systems, mechanical ventilation, air-conditioning
399 and filters to prevent potential airborne transmission of SARS-COV-2 Brussels, Belgium:
400 Federal Agency for Public Health, Food Safety and Environment; 2020 [Available from:
401 [https://www.health.belgium.be/sites/default/files/uploads/fields/fpshealth_theme_file/200528_](https://www.health.belgium.be/sites/default/files/uploads/fields/fpshealth_theme_file/200528_hgr-9599_covid-19_ventilatie_vweb.pdf)
402 [hgr-9599_covid-19_ventilatie_vweb.pdf](https://www.health.belgium.be/sites/default/files/uploads/fields/fpshealth_theme_file/200528_hgr-9599_covid-19_ventilatie_vweb.pdf).
- 403 16. Kaduwela AP, Kaduwela AP, Jrade E, Brusseau M, Morris S, Morris J, et al.
404 Development of a low-cost air sensor package and indoor air quality monitoring in a
405 California middle school: Detection of a distant wildfire. *J Air Waste Manag Assoc*.
406 2019;69(9):1015-22.
- 407 17. European Centre for Disease Prevention and Control. Heating, ventilation and air-
408 conditioning systems in the context of COVID-19: first update Stockholm, Sweden2020
409 [Available from: [https://www.ecdc.europa.eu/sites/default/files/documents/Heating-](https://www.ecdc.europa.eu/sites/default/files/documents/Heating-ventilation-air-conditioning-systems-in-the-context-of-COVID-19-first-update.pdf)
410 [ventilation-air-conditioning-systems-in-the-context-of-COVID-19-first-update.pdf](https://www.ecdc.europa.eu/sites/default/files/documents/Heating-ventilation-air-conditioning-systems-in-the-context-of-COVID-19-first-update.pdf).
- 411 18. de Man P, Paltansing S, Ong DSY, Vaessen N, van Nielen G, Koeleman JGM.
412 Outbreak of COVID-19 in a nursing home associated with aerosol transmission as a result of
413 inadequate ventilation. *Clin Infect Dis*. 2020.
- 414 19. Yang CT, Liao CJ, Liu JC, Den W, Chou YC, Tsai JJ. Construction and application of
415 an intelligent air quality monitoring system for healthcare environment. *J Med Syst*.
416 2014;38(2):15.
- 417 20. Ahlawat A, Mishra SK, Birks JW, Costabile F, Wiedensohler A. Preventing Airborne
418 Transmission of SARS-CoV-2 in Hospitals and Nursing Homes. *Int J Environ Res Public*
419 *Health*. 2020;17(22).
- 420 21. Leung M, Chan AH. Control and management of hospital indoor air quality. *Med Sci*
421 *Monit*. 2006;12(3):SR17-23.
- 422 22. Ramos T, Dedesko S, Siegel JA, Gilbert JA, Stephens B. Spatial and temporal
423 variations in indoor environmental conditions, human occupancy, and operational
424 characteristics in a new hospital building. *PLoS One*. 2015;10(3):e0118207.

- 425 23. Zhou Q, Lyu Z, Qian H, Song J, Möbs VC. Field-Measurement of CO₂ Level in
426 General Hospital Wards in Nanjing. *Procedia Engineering*. 2015;121:52-8.
- 427 24. The Truax Group (Healthcare consulting). Yet More Jumps from Hospital Windows
428 Grantham, NH2017 [Available from:
429 [https://www.patientsafetysolutions.com/docs/February_14_2017_Yet_More_Jumps_from_Ho](https://www.patientsafetysolutions.com/docs/February_14_2017_Yet_More_Jumps_from_Hospital_Windows.htm)
430 [spital_Windows.htm](https://www.patientsafetysolutions.com/docs/February_14_2017_Yet_More_Jumps_from_Hospital_Windows.htm).
- 431 25. Pereira M, Tribess A, Buonanno G, Stabile L, Scungio M, Baffo I. Particle and Carbon
432 Dioxide Concentration Levels in a Surgical Room Conditioned with a Window/Wall Air-
433 conditioning System. *Int J Environ Res Public Health*. 2020;17(4).
- 434 26. Kenarkoohi A, Noorimotlagh Z, Falahi S, Amarloei A, Mirzaee SA, Pakzad I, et al.
435 Hospital indoor air quality monitoring for the detection of SARS-CoV-2 (COVID-19) virus. *Sci*
436 *Total Environ*. 2020;748:141324.
- 437 27. Baures E, Blanchard O, Mercier F, Surget E, le Cann P, Rivier A, et al. Indoor air
438 quality in two French hospitals: Measurement of chemical and microbiological contaminants.
439 *Sci Total Environ*. 2018;642:168-79.
- 440 28. Tang CS, Chung FF, Lin MC, Wan GH. Impact of patient visiting activities on indoor
441 climate in a medical intensive care unit: a 1-year longitudinal study. *Am J Infect Control*.
442 2009;37(3):183-8.
- 443 29. Jung C-C, Wu P-C, Tseng C-H, Su H-J. Indoor air quality varies with ventilation types
444 and working areas in hospitals. *Building and Environment*. 2015;85:190-5.
- 445 30. Chan AW, Tetzlaff JM, Altman DG, Laupacis A, Gotzsche PC, Kroleza-Jeric K, et al.
446 SPIRIT 2013 statement: defining standard protocol items for clinical trials. *Ann Intern Med*.
447 2013;158(3):200-7.
- 448 31. COVID-19 Task Force of REHVA's Technology and Research Committee. COVID-19
449 ventilation and building services guidance for school personnel: REHVA; 2020 [Available
450 from: [https://www.rehva.eu/fileadmin/user_upload/REHVA_COVID-](https://www.rehva.eu/fileadmin/user_upload/REHVA_COVID-19_guidance_document_School_guidance_25112020.pdf)
451 [19_guidance_document_School_guidance_25112020.pdf](https://www.rehva.eu/fileadmin/user_upload/REHVA_COVID-19_guidance_document_School_guidance_25112020.pdf).
- 452 32. Huang Q, Marzouk T, Cirligeanu R, Malmstrom H, Eliav E, Ren Y-F. Ventilation rate
453 assessment by carbon dioxide levels in dental treatment rooms. *medRxiv*. 2021:1-26.
- 454 33. Barreda S, Asadi S, Cappa CD, Wexler AS, Bouvier NM, Ristenpart WD. The Impact
455 of Vocalization Loudness on COVID-19 Transmission in Indoor Spaces. *arXiv.org*.
456 2020:arXiv:2009.04060.
- 457 34. Miller SL, Nazaroff WW, Jimenez JL, Boerstra A, Buonanno G, Dancer SJ, et al.
458 Transmission of SARS-CoV-2 by inhalation of respiratory aerosol in the Skagit Valley
459 Chorale superspreading event. *Indoor Air*. 2021;31(2):314-23.