

Genomic risk prediction for breast cancer in older women

Authors:

Paul Lacaze, PhD¹, Andrew Bakshi, MSc¹, Moeen Riaz, PhD¹, Suzanne G Orchard, PhD¹, Jane Tiller, MGenCouns¹, Johannes T Neumann, MD¹, Prudence R Carr, PhD¹, Amit D Joshi, PhD², Yin Cao, MPH, ScD³, Erica T Warner, MPH², Alisa Manning, PhD², Tú Nguyen-Dumont, PhD⁴, Melissa C. Southey, PhD⁴, Roger L Milne, PhD^{4,5}, Leslie Ford, MD⁶, Robert Sebra, PhD⁷, Eric Schadt, PhD⁷, Lucy Gately, MBBS⁸, Peter Gibbs, MBBS⁸, Bryony A Thompson, PhD⁹, Finlay A Macrae, MBBS⁹, Paul James, MBBS⁹, Ingrid Winship, MBBS⁹, Catriona McLean, MBBS, MD¹⁰, John R Zalcborg, MBBS¹, Robyn L Woods, PhD¹, Andrew T Chan, MD, MPH², Anne M Murray, MD, MSc¹¹ & John J McNeil, MBBS, PhD¹.

Affiliations:

1. Department of Epidemiology and Preventive Medicine, School of Public Health and Preventive Medicine, Monash University, Melbourne, Australia.
2. Clinical and Translational Epidemiology Unit, Massachusetts General Hospital and Harvard Medical School, Boston, MA, USA; MGH Cancer Center, Boston, MA, USA
3. Division of Public Health Sciences, Department of Surgery and Alvin J. Siteman Cancer Center, Washington University School of Medicine, St Louis, MO, USA.
4. Precision Medicine, School of Clinical Sciences at Monash Health, Monash University and Clinical Pathology, University of Melbourne, Melbourne, Australia.
5. Cancer Epidemiology Division, Cancer Council Victoria, Melbourne, Australia
6. National Cancer Institute, Division of Cancer Prevention, Rockville, MD, USA.

7. Department of Genetics and Genomic Sciences, Icahn School of Medicine at Mount Sinai, New York, USA
8. Personalised Oncology Division, Walter and Eliza Hall Institute Medical Research and Faculty of Medicine University of Melbourne, Australia
9. Department of Genomic Medicine; Family Cancer Clinic, Department of Medicine, Department of Pathology, Royal Melbourne Hospital, University of Melbourne, Parkville, VIC, Australia
10. Department of Anatomical Pathology, Alfred Hospital, Melbourne, Victoria, Australia.
11. Berman Center for Outcomes and Clinical Research, Hennepin Healthcare Research Institute, Hennepin Healthcare, and University of Minnesota, Minneapolis, MN, USA

Corresponding author:

*Paul Lacaze, PhD. paul.lacaze@monash.edu

Department of Epidemiology and Preventive Medicine

School of Public Health and Preventive Medicine

Monash University, Level 5, The Alfred Centre,

99 Commercial Road, Melbourne VIC 3004, Australia.

Ph. +61 3 9903 0412, Fax: +61 3 9903 0556. ORCID ID: 0000-0002-0902-6798

Word count: 2815

Abstract

Background: Genomic risk prediction models for breast cancer (BC) have been predominantly developed with data from women aged less than 70 years. Prospective studies of women aged 70 years or older have been limited.

Methods: We assessed the effect of a 313-variant polygenic risk score (PRS) for BC in 6,339 women of European ancestry aged ≥ 70 years. We evaluated incident BC diagnoses over a median follow-up of 4.7 years. A multivariable Cox regression model including conventional risk factors was applied to prospective data, and re-evaluated after adding the PRS. We also assessed the association of rare pathogenic variants (PVs) with BC in susceptibility genes (*BRCA1/BRCA2/PALB2/CHEK2/ATM*).

Results: The PRS, as a continuous variable, was an independent predictor of incident BC (hazard ratio [HR] per standard deviation (SD)=1.4, 95% confidence interval [CI] 1.3-1.6, N=110 cases) and hormone receptor (ER/PR)-positive disease (HR=1.5 [CI 1.2-1.9], N=79 cases). Women in the top quintile of the PRS distribution had higher risk of BC than women in the lowest quintile (HR=2.2 [CI 1.2-3.9]). The concordance index of the model without the PRS was 0.62 (95% CI 0.56-0.68) which improved after addition of the PRS to 0.65 (95% CI 0.59-0.71). Among 41 (0.6%) carriers of PVs in BC susceptibility genes, we observed no incident BC diagnoses.

Conclusion: The 313-variant PRS predicts BC risk in women aged 70 years and older.

1 **Introduction**

2 Breast cancer (BC) risk prediction models may be improved by including genomic risk scores. A
3 polygenic risk score (PRS) aggregates the effect of many common BC risk-associated variants into a
4 single measure.¹⁻⁴ Predictive performance of PRS for BC has mostly been assessed in women aged
5 40-69 years.^{1,3,5-9} The PRS performance, in terms of risk prediction in older women (aged ≥ 70 years)
6 is unclear, despite a high proportion of BC diagnoses occurring in this age group. It is also unclear the
7 predictive performance of a PRS for BC attenuates with age. Given the emerging clinical utility of
8 PRS for BC risk prediction and stratification, this requires further assessment.

9 A small proportion of women (<5%) carry rare pathogenic variants (PVs) in BC predisposition genes,
10 including *BRCA1*, *BRCA2*, *PALB2*, *CHEK2* and *ATM*.¹⁰ Rare PVs can be detected by predictive
11 clinical genetic testing and are of high clinical significance,^{11,12} predisposing women to BC earlier in
12 life^{5-7,10}. Rare PVs account for ~25% of familial BC risk.¹³ If rare PVs have age-dependent effects on
13 BC risk, this may have important clinical implications for the appropriateness of offering predictive
14 genetic testing to older people. Common BC risk-associated genetic variants used in a PRS, together,
15 are estimated to account for a further 18% of familial risk.¹⁴

16 Many clinical studies have measured the association between rare PVs and BC risk.^{5-7,10} More
17 recently, risk conferred by a 313-variant PRS for BC has been measured in meta-analysis of ten
18 studies, with no evidence of age-related attenuation in predictive performance of the PRS reported.¹
19 The same PRS has been assessed across several subsequent PRS validation studies.²⁻⁴ However,
20 participant numbers aged ≥ 70 years were limited. Here, we evaluate the predictive performance of i) a
21 PRS for BC and ii) rare PVs in a prospective cohort of 6,339 women aged ≥ 70 years.

22 **Methods**

23 **Study sample**

24 The study sample comprised female participants of the ASPirin in Reducing Events in the Elderly
25 (ASPREE) trial - a randomized, placebo-controlled, clinical trial investigating the effect of aspirin on
26 disability-free survival.¹⁵⁻¹⁷ Study design^{18,19}, recruitment²⁰, and baseline characteristics²¹ have been
27 published previously. The trial recruited 19,114 individuals from Australia (N=16,703) and the United
28 States (N=2,411) aged 70 years or older (≥ 65 years for US ethnic minorities), who at enrolment were
29 free from diagnosed cardiovascular disease events, dementia, physical disability and life-threatening
30 cancer diagnoses. Biospecimens and consent for genetic analysis were obtained from 14,576
31 participants. The median follow-up time (randomization period) was 4.7 years (interquartile range 2.1
32 years). The study received local ethics committee approvals and is registered (NCT01038583).

33 **Genome-wide genotyping and polygenic risk score**

34 DNA samples were genotyped using the Axiom 2.0 Precision Medicine Diversity Research Array
35 (Thermo Fisher Scientific (TFS), CA, USA) following standard protocols. Only participants with
36 European genetic ancestry (>95% of female participants) were included, to mitigate population
37 stratification bias. Genetic ancestry was defined using principal component analysis (PCA) based on
38 the 1,000 Genomes reference population, with participants outside of the Non-Finnish European
39 ancestry cluster excluded (Figure S1).²² Imputation was performed using the TopMED Server
40 (European samples).²³ After variants with low imputation quality scores ($r^2 < 0.3$) were excluded, a
41 PRS was calculated based on the 313-variant score previously described (1), using genotypes for the
42 remaining 271 variants.¹ Using Plink version 1.9, we calculated the PRS for each individual as the
43 weighted sum of the effect size for the number of risk alleles at each variant.¹

44 **Targeted gene panel sequencing**

45 Our custom gene panel²⁴ included BC predisposition genes that are incorporated into the Breast and
46 Ovarian Analysis of Disease Incidence and Carrier Estimation Algorithm (BOADICEA) - *BRCA1*,
47 *BRCA2*, *PALB2*, *CHEK2* and *ATM*.¹⁰ Following standard protocols, DNA was extracted and

48 sequenced using the S5TM XL system, to average 200X depth. Variants with ‘pathogenic’ or ‘likely
49 pathogenic’ ClinVar annotation²⁵ and/or high-confidence predicted loss-of-function in coding
50 regions²⁶ were curated following ACMG/AMP Standards and Guidelines for the Interpretation of
51 Sequence Variants,²⁷ including review by two or more laboratory scientists and a clinical geneticist.
52 Analysis was restricted to single nucleotide variants and small insertions/deletions.

53 **Endpoints**

54 The study’s primary endpoint was invasive breast cancer (BC), which included incident invasive BC
55 diagnosed during the ASPREE trial; this was adjudicated by an expert panel using histopathology,
56 metastasis imaging or other clinical evidence.²⁸ Age at diagnosis of prevalent BC was self-reported as
57 before or after 50 years.

58 **Statistical analysis**

59 Multivariable Cox proportional hazards regression was used to evaluate the association between PRS
60 with incident BC by estimating the hazard ratio (HR) per standard deviation (SD) of the PRS, after
61 adjusting for BC family history (first-degree blood relatives), treatment (aspirin/placebo), age at
62 enrolment, number of children, alcohol consumption, body mass index (BMI) at enrolment, and use of
63 estrogen or estrogen/progesterone hormone replacement therapy (HRT) at enrolment. Alcohol
64 consumption was categorised into three groupings: none (no current consumption); low (<3 drinking
65 days per week); and high (≥ 3 drinking days per week). Interaction between PRS and aspirin treatment
66 was tested independently alongside the complete set of covariates. BMI and number of children were
67 standardised to mean=0 (SD 1).

68 In a separate model, PRS was categorized into three quintile-based distribution groups -low (0-20%,
69 Q1), moderate-risk (21-80%, Q2-4), and high-risk (81-100%, Q5). R package *pec* v2019.11.03 was
70 used for BC-free survival prediction. Net reclassification improvement (NRI) was calculated using R
71 package *nricens* v1.6, with 1% and 3% cutoff values for predicting increased and decreased risk
72 categories. We calculated cumulative incidence estimates for each PRS group (multivariate adjusted),
73 treating death as a competing risk.

74 Logistic regression was used to assess associations with prevalent breast cancer, including family
75 history and presence of rare PVs as covariates. We further stratified by diagnosis age (<50, 50+), and
76 included number of children in the model. We used variance inflation factor (VIF) to assess the
77 independence of predictors, and measured the discriminative ability of the PRS using concordance
78 index and area under the receiver operating characteristic curve (AUC). Goodness-of-fit for the
79 logistic regression was assessed using the Hosmer-Lemeshow (HL) test and the Tail-Based Max-test-
80 statistic (TBM).²⁹ DeLong's test was used to compare between two correlated ROC curves.^{30,31} We
81 calculated PV ORs for prevalent BC for each gene and all five genes combined. Analyses were
82 performed using R v3.6.1.

83 **Results**

84 **Baseline characteristics**

85 The mean age of the 6,339 female participants of European genetic ancestry was 75.1 years at time of
86 enrolment, with 14% aged >80 years, and 31% current or former smokers (Table 1). The mean BMI
87 was 28.0 kg/m², 75% were current alcohol consumers and 13% had a family history of BC in a first-
88 degree blood relative. At baseline, 533 (8.4%) participants were taking HRT (either estrogen alone or
89 with progesterone). Thirteen (0.2%) were taking progesterone-only preparations. Prevalent BC, was
90 reported by 475 (7.6%) participants, of which 60 (1%) were diagnosed before the age of 50 years.

91 **PRS and rare pathogenic variants**

92 The PRS showed a normal distribution in the study sample with mean -0.13 (SD 0.58) before
93 standardization (Figure S2a), which was scaled to a mean of 0 (SD 1) for subsequent analyses. Forty-
94 two rare pathogenic or likely pathogenic variants (PVs) passed our variant curation protocol (Table
95 S1) across 41 (0.6%) participants (one participant had two PVs detected, one each in *BRCA2* and
96 *CHEK2*). We identified participants with PVs in the *BRCA1* (N=3), *BRCA2* (N=10), *PALB2* (N=6),
97 *CHEK2* (N=7) and *ATM* (N=16) genes. Of these participants, 20% reported a family history of BC in
98 a first-degree blood relative at enrolment.

99 **Incident breast cancer risk**

100 During median follow-up (4.7 years/participant), 110 women had incident BC, with no prevalent BC.
101 None of these women had rare PVs in the *BRCA1*, *BRCA2*, *PALB2*, *CHEK2*, and *ATM* genes. In the
102 multivariable Cox model, conventional BC risk factors, including family history of BC, number of
103 children, alcohol consumption and estrogen HRT were associated with risk of incident BC (Table 2).

104 The PRS, as a continuous variable in the same model, was an independent predictor of incident BC,
105 with a HR of 1.43 (95% confidence interval [CI] 1.18 to 1.73, p<0.001) per SD (Table 2, Figure 1),
106 after adjustment for covariates. The VIF for each term in the multivariable model was less than 1.1,
107 indicating independence of the predictors. The concordance index of the model without the PRS was

108 0.62 (95% CI 0.56 to 0.68), which improved after addition of the PRS to 0.65 (95% CI 0.59 to 0.71).

109 We found no evidence of an interaction between aspirin treatment and the PRS.

110 We categorized the PRS into low- (Q1), moderate- (Q2-4) and high-risk (Q5) groups to consider PRS
111 effect on incident BC. When using Q1 as a reference, participants in the high-risk PRS group had a
112 significantly higher risk of developing incident BC compared to women in the low-risk PRS group
113 (HR=2.16 [95% CI 1.21 to 3.86], $p<0.01$) (Table 2, Figure 2). The competing risk model showed that
114 individuals in Q5 (the high-risk group) had higher cumulative incidence than those in Q1 (the low-risk
115 group) and Q2-4 (the moderate-risk group) (Figure 3). Participants in the moderate- and low-risk
116 groups did not have significantly different risks of incident BC. The calibration plot for the incident
117 risk model (Figure S2b), illustrates high concordance between the predicted and observed events. Net
118 reclassification analysis had point estimates of 0.15 [95% CI 0.03; 0.24] for combined change, with
119 NRI+ 0.09 [95% CI -0.02; 0.13] and NRI- of 0.05 [95% CI 0.02; 0.08]. Reclassification of cases and
120 controls is shown in Table S2.

121 Histopathology was available for 103 incident BC cases (Table S3). The PRS was found to be a
122 significant predictor of (ER+/PR+) disease (HR=1.53 per SD [95% CI 1.22 to 1.91]), $p<0.001$, $n=79$).

123 **Prevalent breast cancer**

124 Of the 41 participants with PVs, 11 (27.5%) reported prevalent BC at baseline, compared with 7.5%
125 (475/6,339) in all female participants, giving an estimated OR of 4.69 (95% CI 2.21 to 9.27, $p<0.001$)
126 for PVs grouped across all five genes (Table S4). The OR estimate for PVs in *BRCA1* and *BRCA2*
127 (OR=6.09 [95% CI 1.77 to 19.08]) was higher than PVs in the other genes (*ATM/PALB/CHECK2*)
128 (OR=3.33 [95% CI 1.19 to 7.92, $p=0.011$). Per-gene ORs are reported in Table S5, but are limited by
129 small carrier numbers.

130 In sub-group analysis, when stratifying prevalent BC cases by diagnosis age (before or after 50 years),
131 the OR estimate for having a PV was higher for early-onset BC risk (diagnosed <50 years, OR=9.79
132 [CI 2.29 to 28.87], $p=0.02$) than for later-onset BC risk (diagnosed >50 years, OR=3.91 [CI 1.64 to
133 8.31], $p=0.02$) (Table S6).

134 The PRS as a continuous variable was associated with prevalent BC after controlling for covariates in
135 the model (OR=1.47 per SD [95% CI 1.34 to 1.61, $p<0.001$). The HL and TBM tests did not indicate
136 a lack of goodness-of-fit ($p>0.05$). The AUC for the model with the PRS (AUC=0.62 [0.59-0.65],
137 Figure S2c) was improved relative to the model including family history of BC only (AUC=0.53
138 [0.52-0.55], Figure S2d) ($p<0.01$). When considering the PRS as a categorical variable, participants in
139 the high-risk group had a significantly higher BC risk compared with the low-risk group (OR=3.16
140 [95% CI 2.26 to 4.49], $p<0.001$). Participants in the moderate-risk group also had higher BC risk
141 versus the low-risk group (OR=2.12 [95% CI 1.56 to 2.94], $p<0.001$).

142 **Modification of BC risk by PRS in rare PV carriers**

143 Eleven participants with PVs reported prevalent BC, and 29 with PVs reported no prevalent BC. We
144 hypothesized that individuals with PVs and a history of BC (affected) may have a higher PRS, on
145 average, than those with PVs but without BC (unaffected), as suggested by previous *BRCA1/BRCA2*
146 studies.³² However, we observed no evidence of over-representation of affected or unaffected carriers
147 between low-, moderate- or high-risk PRS groups (Chi-squared $\chi^2=1.97$, $df=2$, $P=0.37$) (Figure 3,
148 Table S7).

149 **Discussion**

150 The 313-variant PRS for BC predicted incident BC risk in the ASPREE cohort, for women aged ≥ 70
151 years as both a continuous (per SD) or categorical (low, moderate and high-risk groups) variable, and
152 improved net reclassification when added to a model composed of traditional BC risk factors. This
153 suggests adding a PRS may increase predictive performance above traditional clinical risk factors for
154 models predicting BC risk in older women. Women in the highest quintile of the PRS distribution had
155 over 2-fold higher risk of incident BC than those in the lowest quintile. The PRS was also associated
156 with incident hormone receptor positive (ER+/PR+) BC specifically (HR=1.5 [95% CI 1.2-1.9]) and
157 with prevalent BC (HR=1.4 per SD [95% CI 1.3-1.6]). The emerging clinical utility of PRS for BC
158 risk prediction and risk stratification, previously demonstrated in women aged 40-69 years¹⁻⁴,
159 therefore likely extends to older women.

160 The PRS effect (HR=1.4 per SD) was similar to that reported in population-based studies of younger
161 women,^{1,3,8,9} including a recent meta-analysis measuring the same PRS used in our study across ten
162 prospective studies of younger women where ORs ranged from 1.48 to 1.75 across participants of all
163 ages.¹ Subsequent validation studies of the same PRS in other cohorts found similar ORs to our study
164 (~ 1.4), with no evidence of age-related attenuation.²⁻⁴ The average age at enrolment in ASPREE (75
165 years) is over 15 years older than other population-based studies, including the UK Biobank, where
166 average enrolment age was 58 years³³, yet similar HRs were observed. However, HR=1.4 is a modest
167 effect. Most incident BC cases in our study had favourable prognoses (*e.g.* hormone receptor
168 positive), meaning the PRS impact for improving survival in older women in a clinical setting may be
169 limited, and must be balanced against overdiagnosis/overtreatment risks in this demographic.

170 No incident BC diagnoses were observed in 41 women with rare PVs, despite the high expected BC
171 risk conferred by these PVs (*e.g.* average cumulative risk to age 70 years of 50-70% for
172 *BRCA1/BRCA2* PVs).⁷ This challenges the clinical value of predictive genetic testing for BC risk by
173 sequencing of these genes alone in women aged ≥ 70 years. However, this testing can trigger cascade
174 family testing, which has benefits including risk management, early detection, and/or prevention of

175 cancer in younger family members. We also observed no incident ovarian cancer diagnoses in the 41
176 PV carriers.

177 Retrospective data suggested a higher risk of BC in individuals with a PV compared with those
178 without (OR=4.7) when all PVs across all genes were combined into a single group. This reflects the
179 effect of PVs earlier in life. However, women with PVs diagnosed with cancer earlier in life are less
180 likely to have been ascertained by our study, because they either died from cancer before the
181 enrolment age or were too unwell to enrol in the ASPREE trial due to a current or recent cancer
182 diagnosis. This has likely resulted the healthy selection bias that can often occur in older survivor
183 cohorts.³⁴ Thus risk estimates observed in PV carriers ascertained in our study (and the ORs and CIs
184 reported for associations between the PRS/PVs and prevalent cases) must be interpreted with caution.

185 In response to recent studies reporting that an individual's PRS may modify the penetrance of rare
186 PVs in the *BRCA1* and *BRCA2* genes,^{8,9,32,35} we sought evidence of risk-modification by the PRS in
187 PV carriers affected and unaffected by prevalent BC in our study. We observed no evidence of either
188 a higher PRS in females with a PV and affected by BC, or a protective effect of a lower PRS in
189 unaffected PV carriers (Figure 3). However, we acknowledge our analysis was limited by a relatively
190 small number of PV carriers. Further studies are needed to investigate this more rigorously.

191 Key strengths of our study include the well-characterised, older study population (median age after
192 follow-up 78 years) followed prospectively, with all incident BC diagnoses adjudicated by an expert
193 panel. Most previous studies of genetic risk scores for BC have examined younger cohorts, some
194 selected for family history.

195 Limitations of our study include the unavailability of some phenotypic and clinical risk factors
196 associated with BC, such as mammographic density, reproductive factors (*e.g.* age at menarche,
197 menopause, first birth) and hormonal factors beyond HRT use (*e.g.* oral contraceptive use)³⁶. Our
198 clinical risk factor model might be improved with these additional factors. Participants may have
199 undergone risk-reducing bilateral prophylactic mastectomy or bilateral salpingo-oophorectomy prior
200 to enrolment, to reduce BC/OC risk. The relatively small number of PVs detected (N=41) necessitated
201 grouping of PVs across genes to calculate averaged risk, despite known differences in the magnitude

202 of risk conferred by PVs in different genes.^{11,12} The relatively short follow-up period of 4.7 years
203 limited the total number of incident BC events. Prevalent BC (pre-enrolment) was self-reported
204 (without specific diagnosis age) and not verified through supporting documentation, potentially
205 causing over-estimation of prevalent BC events. Our study involved only participants of European
206 genetic ancestry, meaning results may not be generalisable to other populations.

207 In conclusion, we demonstrate that the predictive value of a PRS extends to older women, with no
208 evidence of age-related attenuation in predictive performance after age 70 years. Our study has
209 clinical implications for the use and interpretation of polygenic risk prediction of BC across the
210 female lifespan.

211 **Notes:**

212 **Data availability:** The data underlying this article will be shared on reasonable request to the
213 corresponding author.

214 **Funding:** This work was supported by an ASPREE Flagship cluster grant (including the
215 Commonwealth Scientific and Industrial Research Organisation, Monash University, Menzies
216 Research Institute, Australian National University, University of Melbourne); and grants
217 (U01AG029824 and U19AG062682) from the National Institute on Aging and the National Cancer
218 Institute at the National Institutes of Health, by grants (334047 and 1127060) from the National
219 Health and Medical Research Council of Australia, and by Monash University and the Victorian
220 Cancer Agency. AEC receives a NHMRC Career Development Fellowship (1147843). HPS holds an
221 NHMRC MRFF Next Generation Clinical Researchers Program Practitioner Fellowship
222 (APP1137127). PL is supported by a National Heart Foundation Future Leader Fellowship.

223 **Author disclosures:** No conflicts are declared.

224 **Author contributions:** PL: Conceptualization, Data curation, Funding acquisition, Methodology,
225 Supervision, Writing – original draft. AB: Data curation, Formal Analysis, Investigation, Software.
226 MR: Conceptualization, Data curation, Formal Analysis, Investigation, Software. SGO: Resources,
227 Data curation, Investigation, Project administration. JT: Investigation, Writing – original draft. JN:
228 Data curation, Formal Analysis, Investigation. PRC: JN: Data curation, Formal Analysis,
229 Investigation. AJ: Conceptualization, Methodology. YC: Conceptualization, Methodology. ETW:
230 Conceptualization, Validation. AM: Methodology, Validation. TND: Conceptualization, Validation.
231 MCSS: Conceptualization, Validation. RLM: Conceptualization, Validation. LFL: Conceptualization,
232 Data curation. RS: Conceptualization, Resources, Data curation, Methodology. ES:
233 Conceptualization, Resources. LG: Data curation, Methodology. PG: Conceptualization, Resources,
234 Data curation, Methodology. BAT: Resources, Data curation, Formal Analysis, Methodology. FAM:
235 Conceptualization, Data curation. IW: Conceptualization, Resources, Data curation. CM:
236 Conceptualization, Resources, Data curation, Methodology. JRZ: Conceptualization, Resources,
237 Methodology. RW: Conceptualization, Resources, Methodology. ATC: Resources, Funding

238 acquisition, Project administration, Supervision. AM: Resources, Funding acquisition, Project
239 administration. JJM: Conceptualization, Resources, Project administration, Supervision. All authors
240 were involved in writing (review and editing).

241 **Acknowledgements:** We thank the trial staff in Australia and the United States, the participants who
242 volunteered for this trial, and the general practitioners and staff of the medical clinics who cared for
243 the participants.

Table 1. Characteristics of the study population

	Total	Low-risk PRS (Q1)	Moderate-risk PRS (Q2-4)	High-risk PRS (Q5)
Participants	N = 6339	N = 1268	N = 3803	N = 1268
Sex = Female (%)	6339 (100)	1268 (100)	3803 (100)	1268 (100)
Mean Age at Enrolment, Years	75.1	75.1	75.1	75.2
Age Group, Years (%)				
70-74	3825 (60.3)	778 (61.4)	2287 (60.1)	760 (59.9)
75-79	1599 (25.5)	304 (24.0)	975 (25.6)	320 (25.2)
80-84	706 (11.1)	136 (10.7)	429 (11.3)	141 (11.1)
85+	211 (3.3)	50 (3.9)	112 (2.9)	47 (3.7)
Current or former smoker (%)	1974 (31.1)	391 (30.8)	1195 (31.4)	388 (30.6)
Diabetes (%)	497 (7.8)	97 (7.6)	289 (7.6)	111 (8.8)
Randomized to Aspirin (%)	3170 (50.0)	630 (49.7)	1898 (49.9)	642 (50.6)
Body-mass-index kg/m² (mean) (SD))	28.03 (5.09)	28.02 (5.02)	28.05 (5.10)	28.00 (5.13)
Current alcohol consumption (%)	4730 (74.6)	941 (74.2)	2850 (74.9)	939 (74.1)
Hormone replacement therapy*	533 (8.4)	103 (8.1)	321 (8.4)	109 (8.6)
Progesterone-only HRT	13 (0.2)	1 (0.1)	3 (0.1)	2 (0.2)
Family history of breast cancer (%)[□]	850 (13.4)	135 (10.6)	500 (13.1)	215 (17.0)
Prevalent Breast Cancer				
Cases	475	47	288	140
Diagnosed < 49 Years	60	6	39	15
Diagnosed 50+ Years	415	41	249	125
Incident Breast Cancer[¶]				
Cases	129	21	66	42
Polygenic Risk Score (mean (SD))	0.1 (0.53)	-0.93 (0.26)	-0.13 (0.27)	0.69 (0.28)

PRS = Polygenic risk score, Q = Quintile, HRT = Hormone replacement therapy

* Estrogen alone or in combination with progesterone.

¶ Non-metastatic and metastatic events

□ Family history in first-degree blood relative (mother, sibling or child).

Table 2: Association of a polygenic risk score (PRS) with incident breast cancer (BC) risk in 6,339 older women. A multivariable Cox proportional hazards regression model was used to evaluate the association between PRS as a continuous or categorical variable with incident BC (N=110 cases), after adjusting for family history of BC, treatment (aspirin/placebo), age at enrolment, number of children, alcohol use, BMI and use of hormone replacement therapy.

	PRS as Continuous Variable			PRS as Categorical Variable		
	Hazard Ratio	95% CI	p-value	Hazard Ratio	95% CI	p-value
Polygenic Score (per standard deviation)	1.43	(1.18; 1.73)	<0.001			
Low PRS (Q1)				Reference		
Moderate PRS (Q2,3,4)				1.16	(0.68; 2.00)	0.58
High PRS (Q5)				2.16	(1.21; 3.86)	0.009
Pathogenic variants (N=41 carriers)	<i>No incident events</i>			<i>No incident events</i>		
Family History of Breast Cancer* (Y/N)	1.81	(1.15; 2.85)	0.01	1.83	(1.16; 2.88)	0.009
Age at Enrolment	0.97	(0.92; 1.02)	0.21	0.97	(0.92; 1.02)	0.22
Treatment (Aspirin)	1.16	(0.80; 1.69)	0.44	1.15	(0.79; 1.68)	0.45
Number of Children	0.81	(0.66; 0.99)	0.04	0.81	(0.66; 0.99)	0.04
Body-mass-index (kg/m ² (mean) SD)	1.14	(0.95; 1.37)	0.17	1.14	(0.95; 1.37)	0.15
Alcohol (None)	Reference			Reference		
Alcohol (Low)	1.16	(0.68; 1.97)	0.59	1.16	(0.68; 1.98)	0.58
Alcohol (High)	1.70	(1.01; 2.85)	0.04	1.70	(1.02; 2.86)	0.04
HRT (Y/N)	1.54	(0.88; 2.71)	0.13	1.51	(0.86; 2.65)	0.15

BMI=Body mass index, HRT=Hormone replacement therapy, PRS=Polygenic risk score, CI=Confidence Interval, SD=Standard deviation

*Family history in first-degree blood relative (mother, sibling or child).

□ Estrogen alone or in combination with progesterone.

References

- 244 1. Mavaddat N, Michailidou K, Dennis J, et al. Polygenic Risk Scores for Prediction of Breast
245 Cancer and Breast Cancer Subtypes. *Am J Hum Genet.* 2019;104(1):21-34.
- 246 2. Lakeman IMM, Rodriguez-Girondo M, Lee A, et al. Validation of the BOADICEA model
247 and a 313-variant polygenic risk score for breast cancer risk prediction in a Dutch prospective
248 cohort. *Genet Med.* 2020.
- 249 3. Kapoor PM, Mavaddat N, Choudhury PP, et al. Combined associations of a polygenic risk
250 score and classical risk factors with breast cancer risk. *J Natl Cancer Inst.* 2020.
- 251 4. Mars N, Koskela JT, Ripatti P, et al. Polygenic and clinical risk scores and their impact on
252 age at onset and prediction of cardiometabolic diseases and common cancers. *Nat Med.*
253 2020;26(4):549-557.
- 254 5. Prevalence and penetrance of BRCA1 and BRCA2 mutations in a population-based series of
255 breast cancer cases. Anglian Breast Cancer Study Group. *Br J Cancer.* 2000;83(10):1301-
256 1308.
- 257 6. Kuchenbaecker KB, Hopper JL, Barnes DR, et al. Risks of Breast, Ovarian, and Contralateral
258 Breast Cancer for BRCA1 and BRCA2 Mutation Carriers. *JAMA.* 2017;317(23):2402-2416.
- 259 7. Mavaddat N, Peock S, Frost D, et al. Cancer risks for BRCA1 and BRCA2 mutation carriers:
260 results from prospective analysis of EMBRACE. *J Natl Cancer Inst.* 2013;105(11):812-822.
- 261 8. Barnes DR, Rookus MA, McGuffog L, et al. Polygenic risk scores and breast and epithelial
262 ovarian cancer risks for carriers of BRCA1 and BRCA2 pathogenic variants. *Genet Med.*
263 2020;22(10):1653-1666.
- 264 9. Kuchenbaecker KB, McGuffog L, Barrowdale D, et al. Evaluation of Polygenic Risk Scores
265 for Breast and Ovarian Cancer Risk Prediction in BRCA1 and BRCA2 Mutation Carriers. *J*
266 *Natl Cancer Inst.* 2017;109(7).
- 267 10. Lee AJ, Cunningham AP, Tischkowitz M, et al. Incorporating truncating variants in PALB2,
268 CHEK2, and ATM into the BOADICEA breast cancer risk model. *Genet Med.*
269 2016;18(12):1190-1198.

- 270 11. Breast Cancer Association C, Dorling L, Carvalho S, et al. Breast Cancer Risk Genes -
271 Association Analysis in More than 113,000 Women. *N Engl J Med*. 2021;384(5):428-439.
- 272 12. Hu C, Hart SN, Gnanaolivu R, et al. A Population-Based Study of Genes Previously
273 Implicated in Breast Cancer. *N Engl J Med*. 2021;384(5):440-451.
- 274 13. Bahcall O. Common variation and heritability estimates for breast, ovarian and prostate
275 cancers. *Nature Genetics*. 2013.
- 276 14. Michailidou K, Lindstrom S, Dennis J, et al. Association analysis identifies 65 new breast
277 cancer risk loci. *Nature*. 2017;551(7678):92-94.
- 278 15. McNeil JJ, Wolfe R, Woods RL, et al. Effect of Aspirin on Cardiovascular Events and
279 Bleeding in the Healthy Elderly. *N Engl J Med*. 2018;379(16):1509-1518.
- 280 16. McNeil JJ, Woods RL, Nelson MR, et al. Effect of Aspirin on Disability-free Survival in the
281 Healthy Elderly. *N Engl J Med*. 2018;379(16):1499-1508.
- 282 17. McNeil JJ, Nelson MR, Woods RL, et al. Effect of Aspirin on All-Cause Mortality in the
283 Healthy Elderly. *N Engl J Med*. 2018;379(16):1519-1528.
- 284 18. Group AI. Study design of ASPirin in Reducing Events in the Elderly (ASPREE): a
285 randomized, controlled trial. *Contemporary clinical trials*. 2013;36(2):555-564.
- 286 19. Nelson MR, Reid CM, Ames DA, et al. Feasibility of conducting a primary prevention trial of
287 low-dose aspirin for major adverse cardiovascular events in older people in Australia: results
288 from the ASPirin in Reducing Events in the Elderly (ASPREE) pilot study. *The Medical
289 journal of Australia*. 2008;189(2):105-109.
- 290 20. Lockery JE, Collyer TA, Abhayaratna WP, et al. Recruiting general practice patients for large
291 clinical trials: lessons from the Aspirin in Reducing Events in the Elderly (ASPREE) study.
292 *Med J Aust*. 2019;210(4):168-173.
- 293 21. McNeil JJ, Woods RL, Nelson MR, et al. Baseline Characteristics of Participants in the
294 ASPREE (ASPIrin in Reducing Events in the Elderly) Study. *J Gerontol A Biol Sci Med Sci*.
295 2017;72(11):1586-1593.
- 296 22. Genomes Project C, Auton A, Brooks LD, et al. A global reference for human genetic
297 variation. *Nature*. 2015;526(7571):68-74.

- 298 23. Taliun D, Harris DN, Kessler MD, et al. Sequencing of 53,831 diverse genomes from the
299 NHLBI TOPMed Program. *Nature*. 2021;590(7845):290-299.
- 300 24. Lacaze P, Sebra R, Riaz M, et al. Medically actionable pathogenic variants in a population of
301 13,131 healthy elderly individuals. *Genet Med*. 2020.
- 302 25. Landrum MJ, Lee JM, Riley GR, et al. ClinVar: public archive of relationships among
303 sequence variation and human phenotype. *Nucleic acids research*. 2014;42(Database
304 issue):D980-985.
- 305 26. Lek M, Karczewski KJ, Minikel EV, et al. Analysis of protein-coding genetic variation in
306 60,706 humans. *Nature*. 2016;536(7616):285-291.
- 307 27. Richards S, Aziz N, Bale S, et al. Standards and guidelines for the interpretation of sequence
308 variants: a joint consensus recommendation of the American College of Medical Genetics and
309 Genomics and the Association for Molecular Pathology. *Genet Med*. 2015;17(5):405-424.
- 310 28. Orchard SG, Lockery JE, Gibbs P, et al. Cancer history and risk factors in healthy older
311 people enrolling in the ASPREE clinical trial. *Contemp Clin Trials*. 2020;96:106095.
- 312 29. Song M, Kraft P, Joshi AD, Barrdahl M, Chatterjee N. Testing calibration of risk models at
313 extremes of disease risk. *Biostatistics*. 2015;16(1):143-154.
- 314 30. DeLong ER, DeLong DM, Clarke-Pearson DL. Comparing the areas under two or more
315 correlated receiver operating characteristic curves: a nonparametric approach. *Biometrics*.
316 1988;44(3):837-845.
- 317 31. Sun X, Xu W. Fast Implementation of DeLong's Algorithm for Comparing the Areas Under
318 Correlated Receiver Operating Characteristic Curves. *IEEE Signal Processing Letters*.
319 2014;21(11):1389-1393.
- 320 32. Fahed AC, Wang M, Homburger JR, et al. Polygenic background modifies penetrance of
321 monogenic variants for tier 1 genomic conditions. *Nat Commun*. 2020;11(1):3635.
- 322 33. Sudlow C, Gallacher J, Allen N, et al. UK biobank: an open access resource for identifying
323 the causes of a wide range of complex diseases of middle and old age. *PLoS Med*.
324 2015;12(3):e1001779.

- 325 34. Stovitz SD, Banack HR, Kaufman JS. 'Depletion of the susceptibles' taught through a story, a
326 table and basic arithmetic. *BMJ Evid Based Med*. 2018;23(5):199.
- 327 35. Khera AV, Chaffin M, Aragam KG, et al. Genome-wide polygenic scores for common
328 diseases identify individuals with risk equivalent to monogenic mutations. *Nat Genet*.
329 2018;50(9):1219-1224.
- 330 36. Lee A, Mavaddat N, Wilcox AN, et al. BOADICEA: a comprehensive breast cancer risk
331 prediction model incorporating genetic and nongenetic risk factors. *Genet Med*.
332 2019;21(8):1708-1718.

Figure legends:

Figure 1. Association of a polygenic risk score (PRS) with incident and prevalent breast cancer (BC) risk in 6,339 older women. We evaluated incident BC diagnoses over a median follow-up of 4.7 years and prevalent BC diagnosed pre-enrolment (self-reported). A multivariable Cox regression model including conventional risk factors examined association between incident BC risk and the PRS as a categorical variable by quintiles (Q) of the distribution (low-[Q1] medium-[Q2-4], high-[Q5] risk groups). Logistic regression examined associations with prevalent BC.

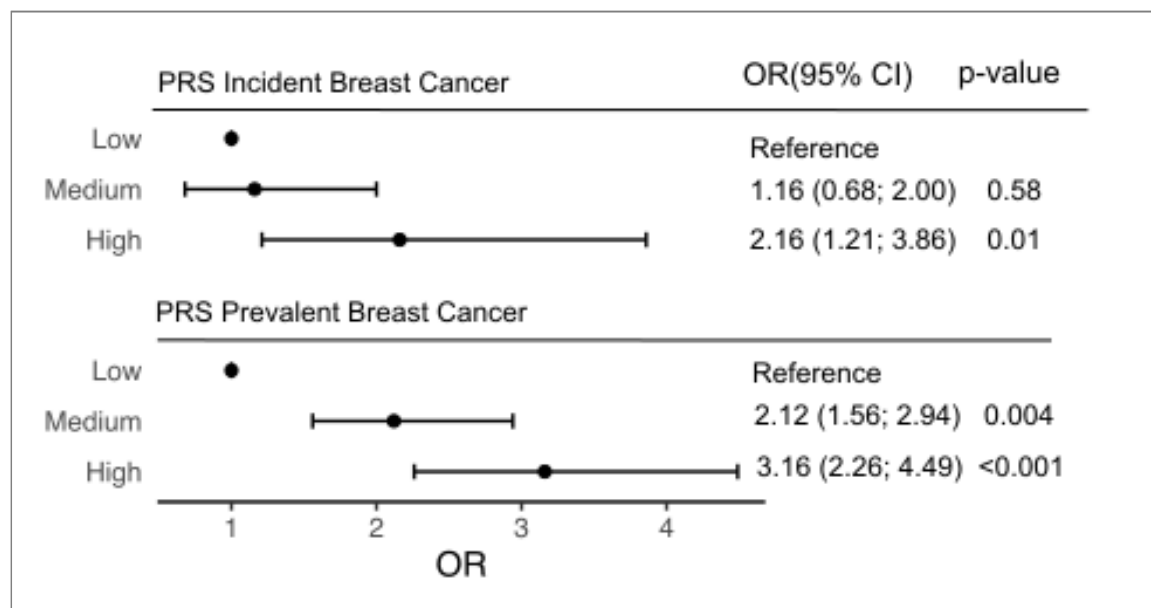


Figure 2: Competing risk survival curves for incident breast cancer according to PRS groups.

The PRS distribution was categorized by quintiles (Q) of the distribution into three groups; low-risk (Q1, green), medium-risk (Q2-4, brown) and high-risk (Q5, red). Competing risk estimates of the cumulative incidence were calculated for each group (multivariable adjusted).

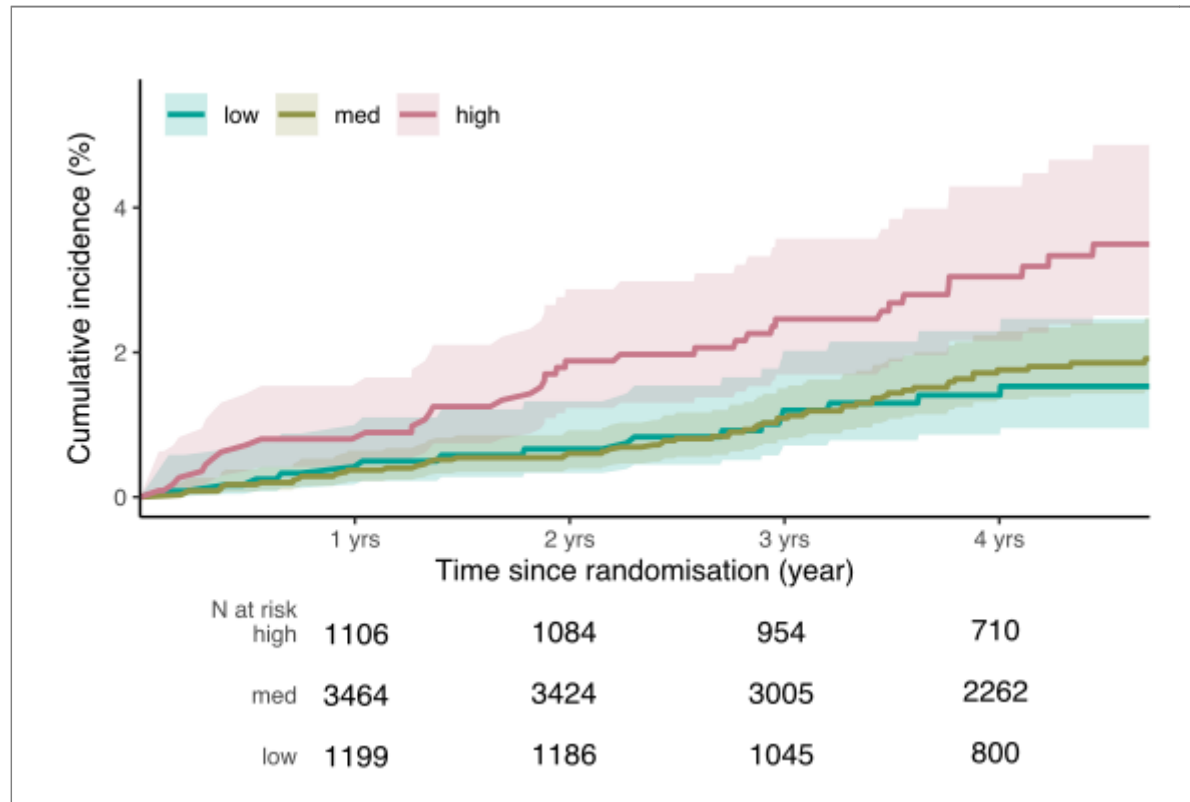


Figure 3: PRS distribution of female pathogenic variant (PV) carriers who were affected (red) or unaffected (blue) by prevalent BC. Density represents the proportion of individuals in each PRS group (low/medium/high). The PRS is distributed normally according to scaled PRS score (mean 0, standard deviation 1). PV carriers are highlighted across the PRS distribution.

