

# 1 **The Physiologic Response to COVID-19 Vaccination**

2 Giorgio Quer<sup>1,\*</sup>, Matteo Gadaleta<sup>1,\*</sup>, Jennifer M. Radin<sup>1</sup>, Kristian G. Andersen<sup>1</sup>, Katie Baca-  
3 Motes<sup>1</sup>, Edward Ramos<sup>1,2</sup>, Eric J. Topol<sup>1</sup>, Steven R. Steinhubl<sup>1</sup>

4  
5 <sup>1</sup> Scripps Research Translational Institute, 3344 N Torrey Pines Ct Plaza Level, La Jolla,  
6 California 92037 USA

7 <sup>2</sup> CareEvolution, 625 N Main St, Ann Arbor, Michigan 48104 USA

8 \*Authors G. Quer and M. Gadaleta equally contributed to the analysis of the data, the discussion,  
9 and the preparation of the manuscript.

10  
11 Correspondence to: Giorgio Quer Scripps Research Translational Institute, 3344 N Torrey Pines  
12 Ct Plaza Level, La Jolla CA 92037 USA; [gquer@scripps.edu](mailto:gquer@scripps.edu).

13  
14  
15  
16  
17  
18  
19  
20  
21  
22  
23

24 **ABSTRACT**

25 Two mRNA vaccines and one adenovirus-based vaccine against SARS CoV-2 are currently  
26 being distributed at scale in the United States. Objective evidence of a specific individual's  
27 physiologic response to that vaccine are not routinely tracked but may offer insights into the  
28 acute immune response and personal and/or vaccine characteristics associated with that. We  
29 explored this possibility using a smartphone app-based research platform developed early in the  
30 pandemic that enabled volunteers (38,911 individuals between 25 March 2020 and 4 April 2021)  
31 to share their smartwatch and activity tracker data, as well as self-report, when appropriate, any  
32 symptoms, COVID-19 test results and vaccination dates and type. Of 4,110 individuals who  
33 reported at least one mRNA vaccination dose, 3,312 provided adequate resting heart rate data  
34 from the peri-vaccine period for analysis. We found changes in resting heart rate with respect to  
35 an individual baseline increased the days after vaccination, peaked on day 2, and returned to  
36 normal on day 6, with a much stronger effect after second dose with respect to first dose (average  
37 changes 1.6 versus 0.5 beats per minute). The changes were more pronounced for individuals  
38 who received the Moderna vaccine (on both doses), those who previously tested positive to  
39 COVID-19 (on dose 1), and for individuals aged <40 years, after adjusting for possible  
40 confounding factors. Taking advantage of continuous passive data from personal sensors could  
41 potentially enable the identification of a digital fingerprint of inflammation, which might prove  
42 useful as a surrogate for vaccine-induced immune response.

43

44

45

46

## 47 INTRODUCTION

48 Due to an unprecedented effort in response to the COVID-19 pandemic, three vaccines are  
49 currently authorized and distributed in the United States: two two-dose mRNA vaccines,  
50 developed by Pfizer-BioNTech and Moderna, and one single-dose adenovirus-based vaccine,  
51 developed by Janssen / Johnson & Johnson.<sup>1-3</sup> The population-wide efficacy of these vaccines  
52 has been well established both through large-scale Phase 3 clinical trials, and reinforced by real-  
53 world data.<sup>4-8</sup> Although it is known that there is substantial variability in individuals' immune  
54 response to vaccines,<sup>9</sup> and that some fully vaccinated individuals can still become infected,<sup>10</sup>  
55 there is currently no routinely available method to objectively identify a specific person's  
56 response to a vaccine beyond self-reported side-effects, which are common. The Centers for  
57 Disease Control and Prevention's (CDC) V-safe program found a majority (69%) of the 1.9  
58 million enrolled individuals receiving the second dose of a mRNA vaccine reported some  
59 systemic side effects.<sup>11</sup> Many of the reported symptoms were consistent with systemic  
60 inflammation including fatigue, myalgias, chills, fever and joint pain being report in the range of  
61 25.6% to 53.9% of individuals the day following their 2<sup>nd</sup> dose.<sup>12</sup>

62 In this analysis from the Digital Engagement and Tracking for Early Control and Treatment  
63 (DETECT) study,<sup>13</sup> we collected daily wearable sensor data from the two-weeks before and after  
64 each vaccination dose from 4,110 volunteers who documented receiving at least one dose of the  
65 vaccine (2,366 received both doses of a mRNA vaccine). We hypothesized that there are digital  
66 biomarkers of vaccine-induced inflammatory responses via subtle deviations from an  
67 individual's normal resting heart rate (RHR), as well as changes in a person's routine sleep and  
68 activity behaviors in the days surrounding a vaccine dose. Through exploring individual and  
69 vaccine characteristics that might influence that response we identified a stronger response

70 associated with prior COVID-19 infection after the first dose only, and to the Moderna, relative  
71 to the Pfizer/BioNTech vaccine, after both doses.

72

## 73 **METHODS**

74 DETECT is an app-based longitudinal prospective study which has enrolled 38,911 individuals  
75 so far from the United States (from March 25, 2020 to April 4, 2021) who have donated their  
76 wearable data, self-reported symptoms when ill, viral testing results and vaccination dates/type.  
77 The protocol for DETECT was reviewed and approved by the Scripps Office for the Protection  
78 of Research Subjects (IRB 20–7531). All participants in the study provided informed consent  
79 electronically.

80 Among DETECT participants, 4,110 have reported receiving at least one dose of the vaccine  
81 (3,954 first dose only, 2,366 both first and second dose, 156 single dose), 57% were female and  
82 their median age was 56 (inter quartile range, IQR 44 - 66).

83 Individuals who had been vaccinated with the single dose Janssen vaccine were excluded as  
84 there were too few (156 individuals) to allow for a meaningful comparison. We have included in  
85 the analysis individuals wearing a Fitbit device (76%) and an Apple watch (20%), while 151  
86 individuals with other devices were not included in this analysis. We also excluded 31  
87 participants who reported a vaccine date before Dec. 11, 2020 – the official date of the first US  
88 vaccine intake – and 6 participants who did not report age or gender. Individuals were excluded  
89 if they had less than 4 days of recording in the 2 weeks before dose 1 vaccination, or less than 3  
90 of the 5 days after vaccination, or less than 14 days during the baseline period (from 60 days to 7  
91 days before vaccination). A number of individuals were excluded in the calculation of RHR  
92 (454), sleep (1091) and activity (345) metrics because of missing data.

93 For each individual, we calculated the average of the absolute changes of RHR, sleep and  
94 activity with respect to their individual baseline, which we have previously shown to be  
95 relatively stable for an individual over time, but to vary substantially between individuals.<sup>14,15</sup> A  
96 single daily value is considered valid only if the device was worn for more than 15 hours during  
97 the day. The RHR was based on the value of heart rate that would be obtained in a supine  
98 position immediately after waking but before getting out of bed for Fitbit devices,<sup>14</sup> and by  
99 considering heart rate values over the day by a proprietary algorithm for Apple watches. The  
100 individual baseline was calculated using the period from 60 days to 7 days before vaccination,  
101 using a decreasing exponential (with exponent  $\alpha=0.05$ ) to reduce the weight of days farthest in  
102 the past. The baseline for the RHR was calculated as

$$103 \quad RHR_{baseline} = \frac{\sum_{d=-60}^{-7} e^{\alpha d} RHR(d)}{\sum_{d=-60}^{-7} e^{\alpha d}}$$

104 while the RHR metric was

$$105 \quad RHR_{metric}(d) = RHR(d) - RHR_{baseline}$$

106 The sleep and activity metrics were calculated accordingly using the total time asleep and the  
107 number of steps recorded by the sensor in the 24 hours, respectively. In the figures, the mean  
108 (over all individuals) and the 95% confidence interval for each metric (RHR, sleep and activity)  
109 in the 15 days before and after the first and second dose of the vaccine are represented. The  
110 cumulative distribution of the maximal variation in RHR in the 2 days after the vaccines is also  
111 represented.

112 The cohort of vaccinated individuals (with first and second vaccine doses, treated separately)  
113 was then split into subgroups according to gender, age (<40, 40-60, >60), vaccine type received,  
114 and if they previously reported a COVID-19 positive test. For each subgroup and for each

115 metric, the mean (over all individuals) of the individual average value (calculated considering the  
116 day of vaccination and the following 4 days), with the corresponding confidence interval was  
117 calculated. The 95% confidence interval in the calculation of the mean is obtained with a  
118 bootstrap method with 1000 iterations.

119 The demographic characteristics of these groups are reported in the Supplement (Table S.1).

120 Unless stated otherwise, all the reported p-values refer to a two-sided t-test to quantify statistical  
121 difference among different groups (Table 1), and to a chi-squared test to evaluate significant  
122 changes in the frequency of observation in each group (Table S.1).

123 A multiple linear regression model was used to calculate the estimated marginal means after  
124 adjusting for potential confounding variables. A t-test was used to assess significant coefficients  
125 and the associated p-values (Table S.2).

126

## 127 **RESULTS**

128 At least one vaccination to date was reported by 4,110 participants in the DETECT study. After  
129 applying the exclusion criteria discussed in Methods, we included a total of 3,312 (80%)  
130 individuals for the analysis of changes in their RHR. Of them, 165 (5.0%) reported having been  
131 previously diagnosed with COVID-19 infection, 1,465 (44%) received the Moderna vaccine and  
132 1,847 (56%) received the Pfizer-BioNTech vaccine. 3,421 (83%) and 2,675 (65%) participants  
133 contributed adequate data - as discussed in Methods - to evaluate changes in activity and sleep,  
134 respectively. (Table S.1)

135 We observed that the average RHR significantly increased the day following vaccination,  
136 reaching a peak on day 2 with a population mean increase of +0.49 (CI: [0.38, 0.61], one-sided t-

137 test,  $p = 0.012$ ) and  $+1.59$  (CI: [1.40, 1.74],  $p < 0.01$ ) beats per minute (BPM) with respect to  
138 baseline, following the first and second dose, respectively. We found that the average RHR did  
139 not return to baseline until day 4 after the first dose and day 6 after the second (Figure 1a & b)  
140 The majority of vaccinated individuals, 70% and 76% after first and second dose, respectively,  
141 experienced an increase in their RHR in the two days following the vaccine. (Figure 1c & d)  
142 We explored several participant and vaccine characteristics that could impact immune response.  
143 (Table 1) We found that average RHR changes with respect to baseline in the 5 days following  
144 vaccination did not vary by gender (two-sided t-test,  $p = 0.44$  and  $p = 0.28$  for first and second  
145 doses, respectively). In contrast, we found that RHR responses vary by age, with individuals age  
146  $< 40$  years having the greatest increase in RHR. (Figure 2) We showed that  $< 60$  years was  
147 associated with a significantly higher RHR increase than 60+ years, but only after the second  
148 dose of the vaccine (average 0.78 versus 0.53 BPM,  $p = 0.03$ ).  
149 We found that prior COVID-19 infection was associated with a significantly higher RHR  
150 increase after the first vaccine dose relative to those without prior infection (average 0.75 versus  
151 0.22 BPM,  $p = 0.02$ ), but no significant difference after the second dose (0.28 versus 0.68,  $p =$   
152 0.10). (Figure 3a & 3b)(Table 1) The changes in RHR for individuals who received the Moderna  
153 vaccine were significantly greater than those who received the Pfizer-BioNTech vaccine, after  
154 both the first (0.39 versus 0.22,  $p = 0.04$ ) and second doses (0.88 versus 0.46,  $p < 0.01$ ). (Figure  
155 3c & 3d)(Table 1)  
156 A multiple regression model was used to adjust for potential confounding factors. Prior COVID-  
157 19 infection was independently associated with a higher RHR increase after the first dose, with  
158 estimated marginal mean of 0.770 (CI: [0.392, 1.147]) versus 0.293 (CI: [0.195, 0.392]) BPM,  
159  $p=0.014$ ; and no significant difference after the second dose, 0.275 (CI: [-0.183, 0.734]) versus

160 0.731 (CI: [0.606, 0.856]),  $p=0.055$ , after adjusting for age, gender, device, and vaccine type.  
161 Similarly, the Moderna vaccine was also independently associated with a higher RHR increase  
162 after both doses (with respect to Pfizer-BioNTech), with estimated marginal mean of 0.622 (CI:  
163 [0.400, 0.843]) versus 0.442 (CI: [0.231, 0.652]),  $p=0.035$  for first dose, and 0.721 (CI: [0.453,  
164 0.989]) versus 0.285 (CI: [0.023, 0.548]),  $p<0.01$  for second dose, after adjusting for age, gender,  
165 device, and prior COVID-19 infection. Age was also associated with RHR response, but only  
166 after the second vaccine dose ( $p<0.01$ ). We assessed the interaction between age and gender but  
167 did not find it to be significant ( $p=0.53$  and  $p=0.52$  for first and second dose, respectively).  
168 (Table S.2)

169 We also observed that normal activity and sleep patterns among participants were minimally  
170 affected by the first dose of the vaccine, with no decrease in number of steps and a mean increase  
171 of only 13 minutes (CI: [10, 16]) of sleep in the day following the vaccine. However, a  
172 significant decrease in activity (-1375 steps, CI: [-1540, -1205]) and increase in sleep (40  
173 minutes, CI: [34, 45]) relative to baseline were observed on day 1 after the second vaccine dose,  
174 both of which returned to baseline by day 2. (Figures 4 and 5)

175

## 176 **DISCUSSION**

177 While there is a goal of achieving COVID-19 immunization in billions of people, there is  
178 currently no objective means of detecting a response to vaccines except for the occurrence of  
179 side-effects. Moreover, while vaccines against COVID-19 are remarkably effective, they are not  
180 100% effective, as recently highlighted by reports of “vaccine breakthrough” in fully vaccinated  
181 people. Many individuals are concerned about their lack of any symptoms after getting  
182 vaccinated. The present study demonstrates the ability, through widely available wearable



183 sensors, to recognize individual physiologic changes associated with a systemic vaccine-induced  
184 inflammatory response.

185 Individual response to vaccination is remarkably complex, incorporating components of innate,  
186 humoral and cell-based immune system. A study of response to yellow fever vaccination found  
187 significant modulation of expression in 97 genes in the days following vaccination.<sup>16</sup> Modern  
188 improvements in a range of analytic tools have enabled a system biological approach to better  
189 understand the immune responses to vaccination, which have shown promise in helping define  
190 molecular signatures that may predict vaccine-induced immunity.<sup>17</sup> There are no commercially  
191 available tests for neutralizing antibodies to the spike protein or its components S1, S2, RBD,  
192 that would provide quantitative evidence of an immune response. Beyond humoral immunity, the  
193 early T-cell spike-specific response has recently been shown to be important,<sup>18</sup> yet is only rarely  
194 assessed in academic research settings. Accordingly, it is currently impossible to identify, at  
195 scale, the level of protection an individual acquires after vaccination.<sup>19</sup>

196 Currently available mRNA vaccines (Pfizer-BioNTech and Moderna) and adenovirus vaccine  
197 (Janssen) elicit an inflammatory response through immune cell activation leading to the  
198 production of Type 1 interferon and the release of multiple inflammatory mediators.<sup>20</sup>

199 Vaccination has been shown to stimulate the production of neutralizing antibodies, activate  
200 virus-specific CD4<sup>+</sup> and CD8<sup>+</sup> T cells, and lead to the robust release of immune-modulatory  
201 cytokines in the days that follow a first, and especially a second dose of the mRNA vaccines.<sup>21</sup>

202 Beyond rapid stimulation of innate immunity via adjuvant stimulation, prior studies of mRNA  
203 vaccines have shown peak production of the vaccine-induced antigen protein to occur as soon as  
204 6 hours after vaccination, suggesting that an inflammatory response begins within hours of  
205 vaccination.<sup>22</sup> Consistent with that, we identified a rapid rise in heart rate the day after

206 vaccination, and one that was more robust after the second dose, unless the participant had prior  
207 COVID-19 infection, mirroring the significantly higher incidence of systemic symptoms  
208 following the second dose found in V-safe.<sup>23</sup> We also observed a more pronounced increase after  
209 a Moderna vaccine, in accordance to a recent analysis of V-safe data that identified a higher  
210 incidence of side effects relative to those receiving the Pfizer-BioNTech vaccine, especially after  
211 the second dose.<sup>12</sup> This may be related to a possible unnecessary excess dose and consequent  
212 side-effects, supporting the finding of a randomized trial of full (100 ml) versus half (50 ml) dose  
213 of the Moderna vaccine with lack of differences in immune response.<sup>24</sup>

214 Immunosenescence or waning response to vaccination as someone ages has been described for  
215 many vaccines and is a concern for COVID-19.<sup>25</sup> We found that individuals in the younger age  
216 group (<40 years) had a significantly higher RHR response to the second dose compared to older  
217 individuals. Overall, women also reported more side effects to V-Safe compared to men.<sup>23</sup>  
218 Immune response to other vaccines has varied by gender, possibly because of differences in  
219 hormones, genetics, or differences in dosing by weight. A prior flu vaccine study found that  
220 vaccine induced immunity in mice was increased by estradiol in females and decreased by  
221 testosterone in males<sup>26</sup> and that as age increased, sex differences in vaccine efficacy was  
222 declined. Although the RHR differences we saw was not significant, it is possible that a greater  
223 change would be identified when younger age groups are vaccinated.

224 We found that the observable variables (age, gender, previously COVID-19 infection, device  
225 used, vaccine type) can explain only 2% of the variance in terms of average changes in RHR  
226 (and less than 24% of the variance in terms of peak changes in RHR). It is possible that with  
227 further investigation it may be found that RHR response to vaccines may correlate with

228 individual immune response and therefore wearables may offer a way to easily quantify  
229 someone's protection.

230 The presence of a fever has previously been shown to be associated with an increase in heart  
231 rate, with an ~8.5 BPM increase for every degree Celsius increase in body temperature.<sup>27</sup> While  
232 ~30% of V-safe participants reported having a fever after their second dose and ~9% after the  
233 first, we showed that the vast majority of participants experienced an increase in RHR after both  
234 vaccination doses, suggesting that inflammation unassociated with an elevated temperature also  
235 influences heart rate, albeit much more subtly.<sup>12</sup> Inflammation, outside of that associated with  
236 fever, and its influence on heart rate has been previously described, but primarily at a population  
237 level.<sup>28,29</sup> Similarly, inflammation has also been shown to lead to increase in sleep and a  
238 decrease in activity, with a more rapid return to normal with treatment.<sup>30,31</sup> By taking advantage  
239 of wearable sensors we were able to recognize subtle, but significant deviations from an  
240 individual's unique, normal resting heart rate due to vaccination. We were able to also  
241 demonstrate substantial interindividual variability in that heart rate increase that was only related  
242 to the mRNA vaccine type and prior COVID-19 infection in our population. The significantly  
243 greater heart rate response at the time of vaccination, especially the first dose, in those with prior  
244 infection is consistent with a greater immune response for these individuals.<sup>32</sup> Although this  
245 response is clearly multifactorial, future work coupling continuous sensory data with a "systems  
246 vaccinology" approach<sup>17</sup> could enable the identification of easily scalable, sensor-based markers  
247 of the desired immune response.

#### 248 Limitations

249 The data collected as part of the DETECT study depends entirely on the participants' willingness  
250 to use their wearable device and accurately reporting vaccination date and type. While we do not

251 have direct control on self-reported information, the DETECT app provides an intuitive tool to  
252 self-report vaccination information, and an optional reminder to report information on the second  
253 dose after first one has been reported. While the information collected may not be as accurate as  
254 in a controlled laboratory setting, we rely on previous work confirming that self-reported  
255 symptoms and sensor data provide valuable information.<sup>33-35</sup> Only daily sensor data is considered  
256 in this analysis, excluding intra-day data provided by some wearable sensor. These once-a-day  
257 values are indeed more stable and less affected by independent confounders like the specific  
258 activity performed by the individual during the day. Furthermore, the population in the DETECT  
259 study that has received a COVID-19 vaccine may not be representative of the population of the  
260 United States, as the study is open to individuals who have access to a wearable device  
261 technology.<sup>36</sup> While research has found no racial or ethnic variation in smartwatch or activity  
262 tracker usage in the U.S., they are less commonly utilized by older individuals, those in the  
263 lowest socioeconomic tertile, and lower educational attainment.<sup>37</sup> Another reason our results may  
264 not be representative of the broader population is that the first phase of the vaccine distribution  
265 has focused on an older age range and at-risk individuals based on their profession or health  
266 status. It is also possible that some participants had prior COVID-19 that went undiagnosed,  
267 which may have impacted their immune response to the first dose.

## 268 Conclusions

269 Fitness bands and smartwatches are owned by approximately 1 in 3 American adults and appear  
270 to provide, through passive data capture, meaningful data to track the physiologic response to  
271 COVID-19 vaccines at the individual level. Not only might this provide reassurance for  
272 vaccinees who do not experience any symptoms, but correlation with the humoral and cellular  
273 immune response may indicate digital tracking as a useful surrogate. Noteworthy is the potential

274 to identify the small proportion of people (approximately 5%) who do not have an adequate  
275 immune response to vaccines, and who may benefit by more in-depth assessment and re-  
276 vaccination.

277 **ACKNOWLEDGEMENTS**

278 This work was funded by grant number UL1TR002550 from the National Center for Advancing  
279 Translational Sciences (NCATS) at the National Institutes of Health (NIH) (E.J.T., K.G.A, and  
280 S.R.S.) and NIH NIAID grant number U19AI135995 (K.G.A and S.R.S). We thank also Danny  
281 Oran, Lauren Ariniello, Tyler Peters, Royan Kamyar, Chris Nowak and Vik Kheterpal for their  
282 contribution to DETECT.

283 **AUTHORS CONTRIBUTIONS**

284 G.Q., M.G., and S.R.S. made substantial contributions to the study conception and design. G.Q.,  
285 M.G., J.M.R., K.B.-M., E.R., and S.R.S. made substantial contributions to the acquisition of  
286 data. G.Q., M.G., and J.M.R. conducted statistical analysis. G.Q., M.G., J.M.R., and S.R.S. made  
287 substantial contributions to the interpretation of data. G.Q., M.G., and S.R.S. drafted the first  
288 version of the manuscript. G.Q., M.G., J.M.R., K.G.A., K.B.-M., E.R., E.J.T. and S.R.S.  
289 contributed to critical revisions and approved the final version of the manuscript. G.Q., M.G. and  
290 S.R.S. take responsibility for the integrity of the work.

291 **DECLARATION OF INTERESTS**

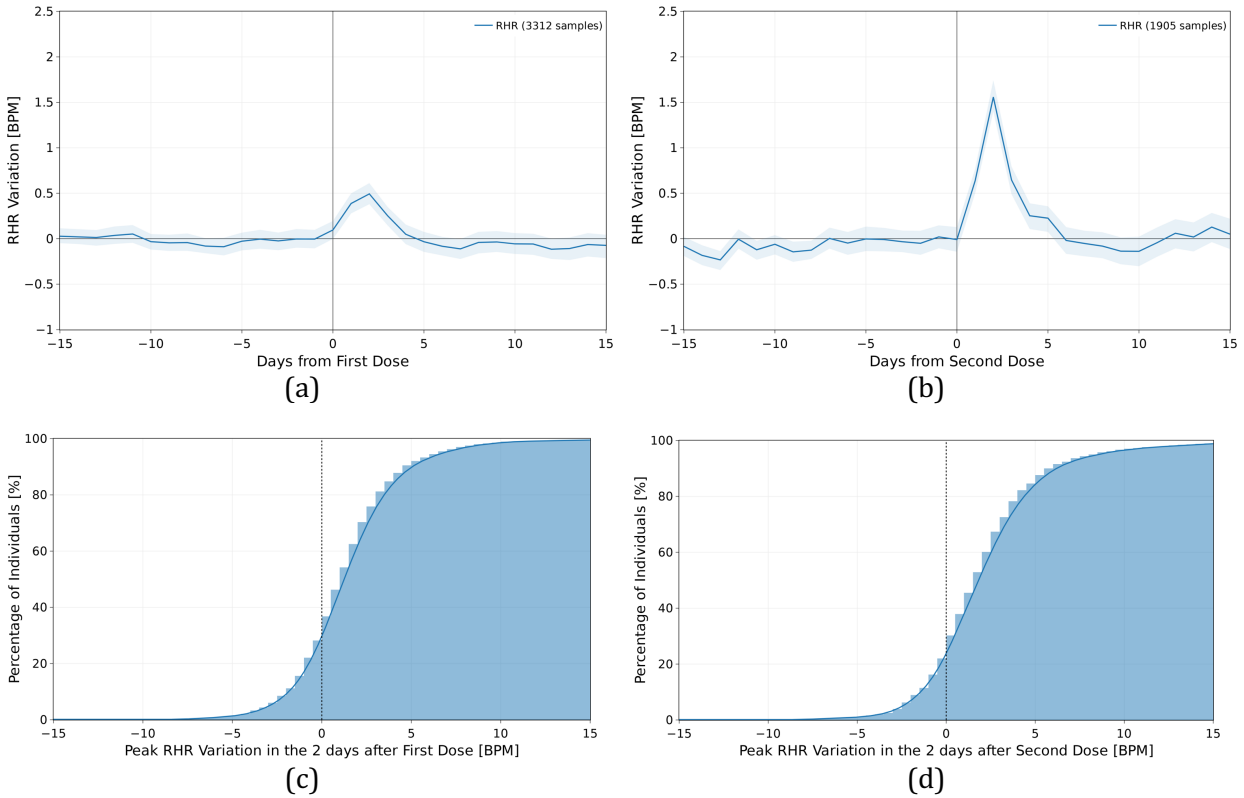
292 S.R.S. is employed by PhysIQ. The other authors declare no competing interests.

		After First Dose				After Second Dose			
		Mean	95% CI	Individuals	p-value (t-test)	Mean	95% CI	Individuals	p-value (t-test)
RHR Variation [BPM]	Overall	0.29	(0.21, 0.37)	3312		0.65	(0.56, 0.76)	1905	
	Female	0.32	(0.20, 0.42)	1893	0.44	0.7	(0.56, 0.86)	1119	0.28
	Male	0.25	(0.13, 0.37)	1419		0.58	(0.42, 0.76)	786	
	Moderna	0.39	(0.28, 0.51)	1465	0.04	0.88	(0.73, 1.03)	865	< 0.01
	Pfizer/BioNTech	0.22	(0.10, 0.33)	1847		0.46	(0.32, 0.61)	1040	
	Age >60	0.27	(0.15, 0.38)	1348	0.66	0.53	(0.40, 0.68)	957	0.03
	Age <=60	0.31	(0.19, 0.42)	1964		0.78	(0.61, 0.95)	948	
	Prev. Positive	0.75	(0.30, 1.20)	165	0.02	0.28	(-0.18, 0.73)	108	0.1
	Others	0.27	(0.18, 0.35)	3147		0.68	(0.57, 0.78)	1797	
Sleep Variation [min]	Overall	2.75	(1.28, 4.34)	2675		5.9	(3.63, 8.18)	1490	
	Female	2.51	(0.41, 4.52)	1545	0.66	6.17	(3.21, 9.06)	885	0.72
	Male	3.15	(0.94, 5.44)	1130		5.53	(2.24, 8.74)	605	
	Moderna	2.96	(0.59, 5.18)	1174	0.87	9.66	(6.44, 13.33)	671	< 0.01
	Pfizer/BioNTech	2.72	(0.59, 4.75)	1501		2.73	(-0.26, 5.58)	819	
	Age >60	2.16	(-0.19, 4.45)	1064	0.55	5.06	(2.18, 8.02)	743	0.53
	Age <=60	3.19	(0.95, 5.22)	1611		6.52	(3.56, 9.68)	747	
	Prev. Positive	7.75	(0.22, 15.40)	141	0.15	6.61	(-3.45, 17.91)	88	0.83
	Others	2.51	(0.97, 4.02)	2534		5.81	(3.59, 8.14)	1402	
Activity Variation [n steps]	Overall	43.9	(-24.59, 117.67)	3421		-363.63	(-455.50, -278.27)	1960	
	Female	29.94	(-60.11, 125.50)	1971	0.69	-407.18	(-523.43, -305.41)	1160	0.2
	Male	56.97	(-45.31, 162.52)	1450		-295.73	(-430.40, -147.68)	800	
	Moderna	-4.61	(-106.04, 93.00)	1516	0.23	-583.83	(-712.91, -457.53)	880	< 0.01
	Pfizer/BioNTech	81.07	(-15.57, 182.10)	1905		-185.04	(-312.38, -61.69)	1080	
	Age >60	-80.71	(-177.65, 20.72)	1375	< 0.01	-337.26	(-453.95, -227.53)	969	0.59
	Age <=60	126.82	(28.46, 223.58)	2046		-392.36	(-525.60, -261.86)	991	
	Prev. Positive	-190.16	(-435.46, 55.30)	176	0.13	-192.74	(-560.89, 152.98)	117	0.37
	Others	55.84	(-18.38, 127.25)	3245		-374.93	(-455.95, -289.25)	1843	

Table 1 Mean changes in RHR, sleep and activity metrics with respect to the individual baseline in the day of vaccination and the following 4 days, for dose 1 and dose 2. Individuals are divided into binary groups based on gender, age over 60, COVID-19 vaccine type and previously reported COVID-19 positive test.

293  
294  
295  
296

297

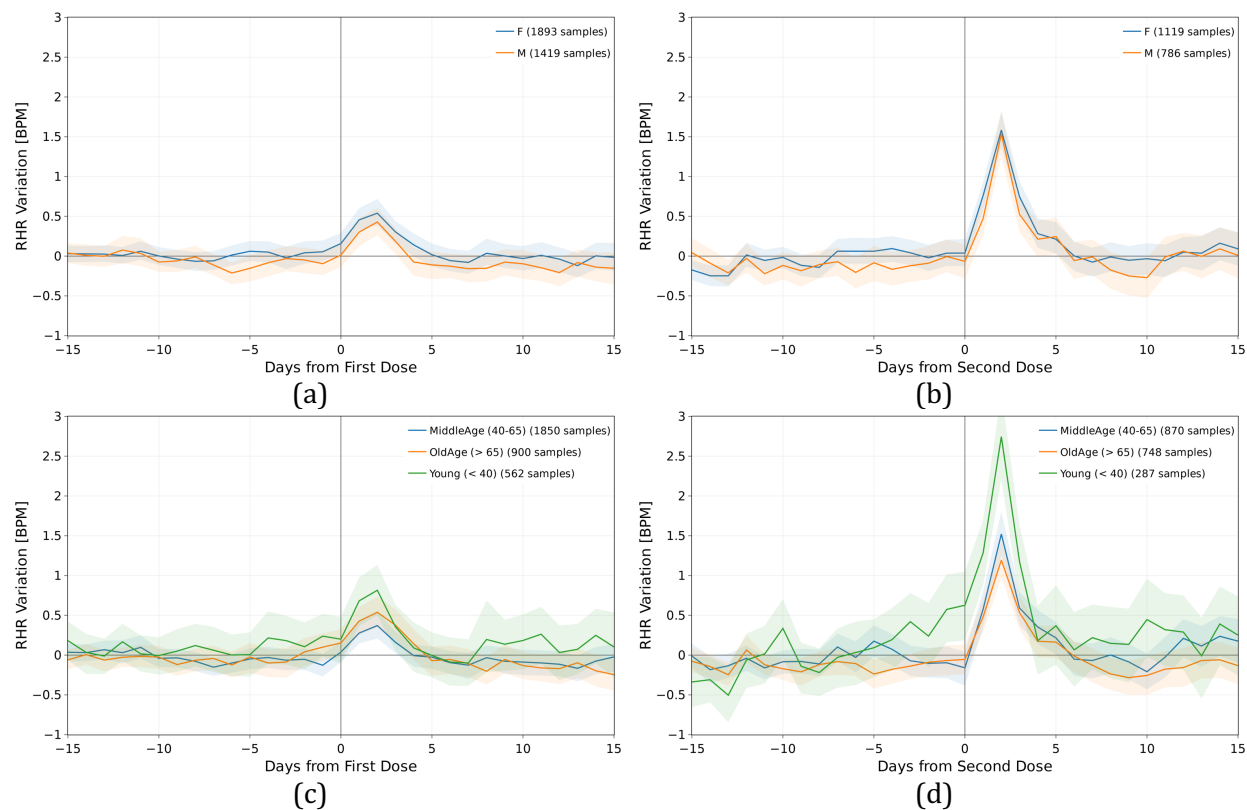


298 *Figure 1* Mean and 95% confidence interval of the absolute individual changes in resting heart rate (in BPM) with respect  
299 to the individual baseline around the date of vaccination (day 0), for the first dose of the vaccine (a) and for the second  
300 dose (b). The cumulative distribution of the maximal variation in resting heart rate in the 2 days after the vaccines after  
301 the first (c) and second (d) vaccine dose.

302

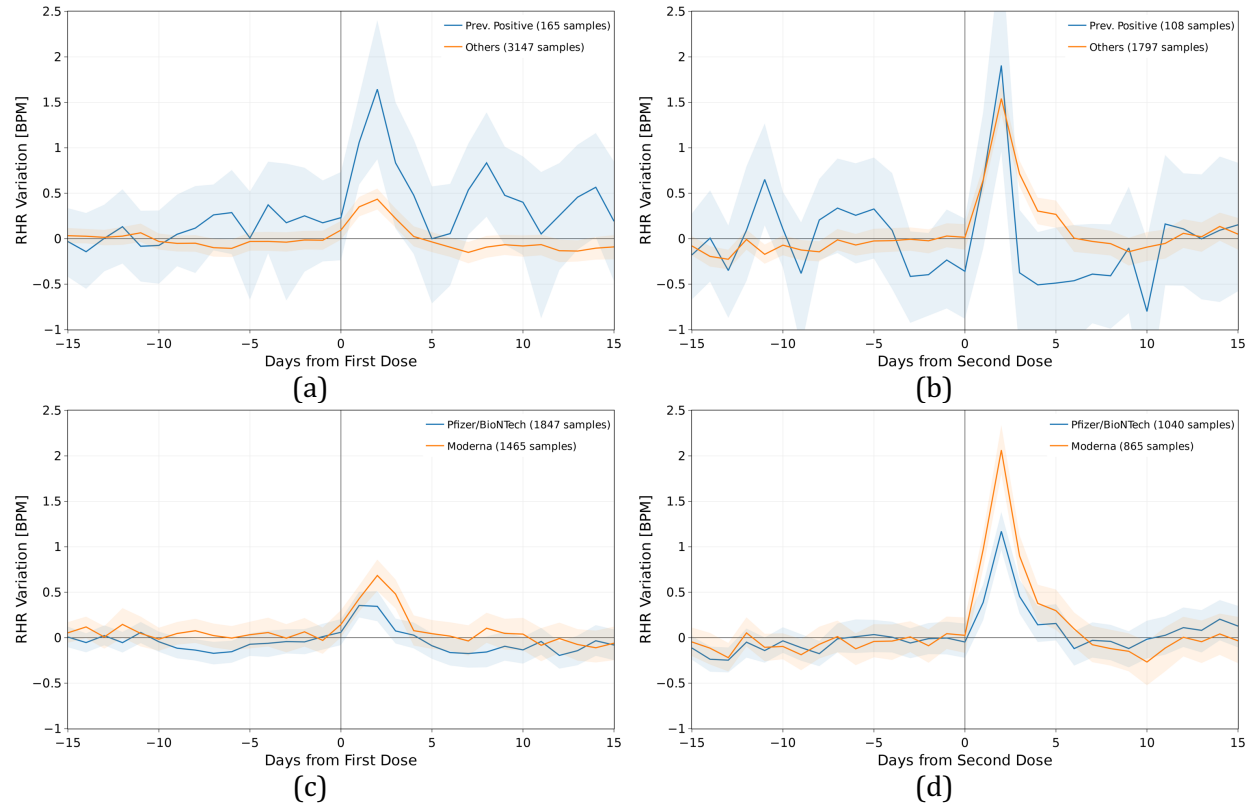


303



304 *Figure 2* Mean and 95% confidence interval of the absolute individual changes in resting heart rate (in BPM) with respect  
305 to the individual baseline around the date of vaccination (day 0), for the first dose of the vaccine (a), (c), and for the  
306 second dose (b), (d), for all individuals grouped by gender (a), and (b) and age(c) and (d).

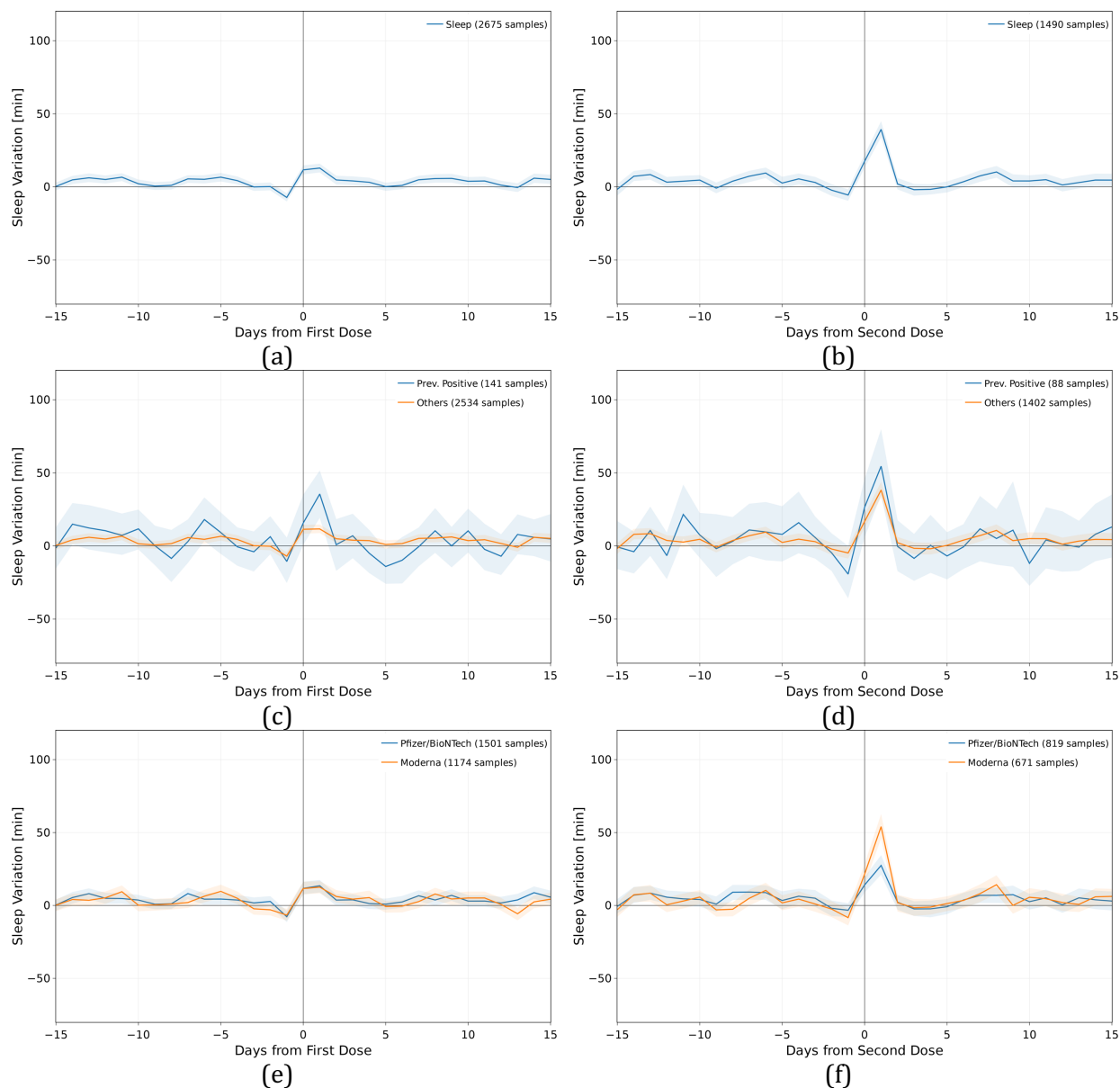
307  
308  
309  
310  
311  
312  
313  
314  
315  
316  
317



318 *Figure 3* Mean and 95% confidence interval of the absolute individual changes in resting heart rate (in BPM) with respect  
319 to the individual baseline around the date of the first and second dose of vaccine (day 0), based on prior COVID-19  
320 infection (a) and (b), and based on the type of mRNA vaccine received, either Pfizer-BioNTech or Moderna vaccines (c)  
321 and (d).

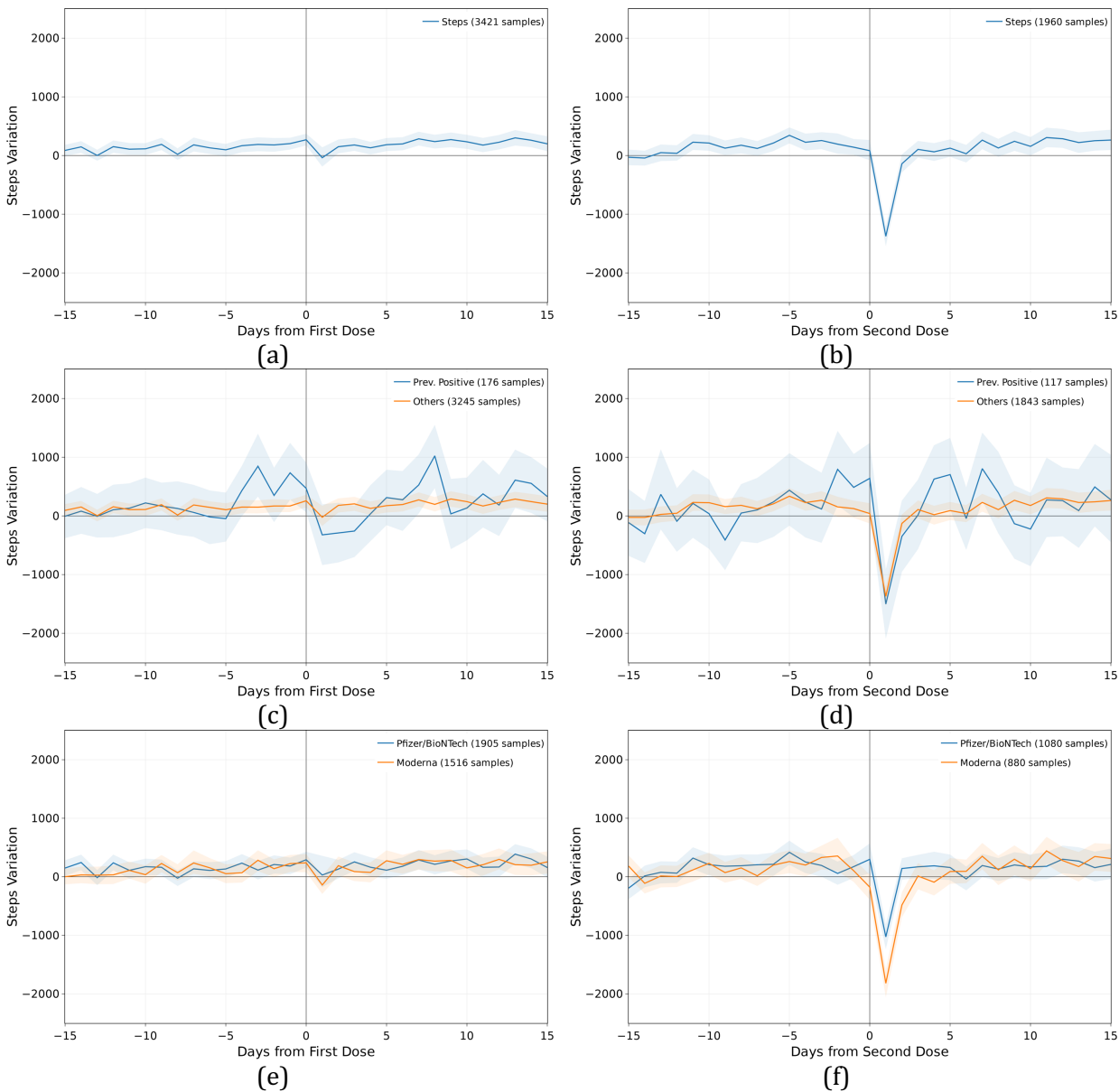
322

323



324 *Figure 4* Mean and 95% confidence interval of the absolute individual changes in sleep metric (in minutes) with respect to  
325 the individual baseline around the date of vaccination (day 0), for the first dose of the vaccine (a), (c), (e), and for the  
326 second dose (b), (d), (f), for all individuals vaccinated (a) and (b), for individuals previously tested positive to COVID-19  
327 (c) and (d), and for individuals vaccinated with the Pfizer-BioNTech or Moderna vaccines (e) and (f).

328



329 *Figure 5* Mean and 95% confidence interval of the absolute individual changes in activity metric (number of steps) with  
330 respect to the individual baseline around the date of vaccination (day 0), for the first dose of the vaccine (a), (c), (e), and  
331 for the second dose (b), (d), (f), for all individuals vaccinated (a) and (b), for individuals previously tested positive to  
332 COVID-19 (c) and (d), and for individuals vaccinated with the Pfizer-BioNTech or Moderna vaccines (e) and (f).

333

334

335

336

337 SUPPLEMENTAL TABLES

338

		After First Dose					After Second Dose						
		Individuals	Age Median [IQR]	Female	Age >60	Prev. Positive	Fitbit	Individuals	Age Median [IQR]	Female	Age >60	Prev. Positive	Fitbit
<b>RHR Variation [BPM]</b>	<b>Overall</b>	3312	57 [45 - 66]	57.20%	40.70%	5.00%	74.90%	1905	61 [47 - 69]	58.70%	50.20%	5.70%	73.30%
	<b>Moderna</b>	1465	58 [46 - 67]	58.2% p=0.32	43.8% p < 0.01	4.3% p=0.13	75.3% p=0.71	865	62 [48 - 70]	60.0% p=0.33	52.3% p=0.12	6.2% p=0.37	73.8% p=0.74
	<b>Pfizer/BioNTech</b>	1847	56 [44 - 65]	56.4% p=0.32	38.2% p < 0.01	5.5% p=0.13	74.7% p=0.71	1040	60 [47 - 68]	57.7% p=0.33	48.6% p=0.12	5.2% p=0.37	73.0% p=0.74
	<b>Prev. Positive</b>	165	52 [44 - 62]	67.9% p < 0.01	30.3% p < 0.01	-	78.2% p=0.37	108	53 [44 - 66]	75.0% p < 0.01	36.1% p < 0.01	-	79.6% p=0.16
	<b>Others</b>	3147	57 [45 - 66]	56.6% p < 0.01	41.2% p < 0.01	-	74.8% p=0.37	1797	61 [48 - 69]	57.8% p < 0.01	51.1% p < 0.01	-	73.0% p=0.16
<b>Sleep Variation [min]</b>	<b>Overall</b>	2675	57 [44 - 66]	57.80%	39.80%	5.30%	86.20%	1490	60 [47 - 69]	59.40%	49.90%	5.90%	85.50%
	<b>Moderna</b>	1174	58 [45 - 67]	58.9% p=0.29	42.2% p=0.02	4.4% p=0.10	86.7% p=0.51	671	61 [47 - 69]	61.0% p=0.29	51.3% p=0.35	6.4% p=0.53	86.6% p=0.32
	<b>Pfizer/BioNTech</b>	1501	56 [44 - 65]	56.8% p=0.29	37.8% p=0.02	5.9% p=0.10	85.7% p=0.51	819	60 [47 - 68]	58.1% p=0.29	48.7% p=0.35	5.5% p=0.53	84.6% p=0.32
	<b>Prev. Positive</b>	141	52 [43 - 62]	67.4% p=0.02	30.5% p=0.03	-	87.2% p=0.80	88	51 [42 - 65]	72.7% p=0.01	36.4% p=0.01	-	92.0% p=0.10
	<b>Others</b>	2534	57 [45 - 66]	57.2% p=0.02	40.3% p=0.03	-	86.1% p=0.80	1402	61 [47 - 69]	58.6% p=0.01	50.7% p=0.01	-	85.1% p=0.10
<b>Steps Variation</b>	<b>Overall</b>	3421	57 [45 - 66]	57.60%	40.20%	5.10%	77.50%	1960	60 [47 - 69]	59.20%	49.40%	6.00%	76.50%
	<b>Moderna</b>	1516	58 [46 - 67]	58.7% p=0.26	43.1% p < 0.01	4.4% p=0.10	77.5% p=0.98	880	62 [48 - 69]	60.5% p=0.32	51.7% p=0.08	6.5% p=0.45	76.8% p=0.79
	<b>Pfizer/BioNTech</b>	1905	56 [44 - 65]	56.7% p=0.26	37.8% p < 0.01	5.7% p=0.10	77.5% p=0.98	1080	59 [47 - 68]	58.1% p=0.32	47.6% p=0.08	5.6% p=0.45	76.2% p=0.79
	<b>Prev. Positive</b>	176	52 [44 - 62]	69.3% p < 0.01	29.5% p < 0.01	-	79.5% p=0.57	117	53 [42 - 64]	74.4% p < 0.01	34.2% p < 0.01	-	81.2% p=0.26
	<b>Others</b>	3245	57 [45 - 66]	57.0% p < 0.01	40.8% p < 0.01	-	77.4% p=0.57	1843	61 [47 - 69]	58.2% p < 0.01	50.4% p < 0.01	-	76.2% p=0.26

339

340 *Table S.1 Demographic characteristics (age and gender) and device used by individuals in the 4 groups used in the analysis,*  
 341 *depending on vaccine type and if previously tested positive to COVID-19. A chi-squared test has been used to evaluate*  
 342 *significant changes in the frequency of observation in each group.*

343

344

345

	First Dose			Second Dose		
	Coefficient	Std. Error	p-value	Coefficient	Std. Error	p-value
<b>(Intercept)</b>	0.253	0.180	0.160	1.395	0.237	<0.01
<b>Normalized Age</b>	-0.066	0.176	0.708	-0.923	0.224	<0.01
<b>Gender (1 if Male)</b>	-0.057	0.086	0.509	-0.068	0.113	0.547
<b>Prev. Covid (1 if Positive)</b>	0.477	0.194	0.014	-0.491	0.237	0.039
<b>VaccineType (1 if Moderna)</b>	0.180	0.085	0.035	0.449	0.110	<0.01
<b>Device (1 if Apple)</b>	0.091	0.098	0.352	0.172	0.124	0.165

346

347 *Table S.2 Coefficients with 95% confidence interval and associated significance for a multiple regression model to predict the*  
348 *average RHR change after each dose of one mRNA vaccine. Age has been normalized with respect to the population median.*

349

350

351

352

353

354   **REFERENCES**

- 355
- 356   1.    Oliver, S.E., *et al.* The Advisory Committee on Immunization Practices' Interim  
357        Recommendation for Use of Pfizer-BioNTech COVID-19 Vaccine - United States,  
358        December 2020. *MMWR Morb Mortal Wkly Rep* **69**, 1922-1924 (2020).
- 359   2.    Oliver, S.E., *et al.* The Advisory Committee on Immunization Practices' Interim  
360        Recommendation for Use of Moderna COVID-19 Vaccine - United States, December  
361        2020. *MMWR Morb Mortal Wkly Rep* **69**, 1653-1656 (2021).
- 362   3.    Oliver, S.E., *et al.* The Advisory Committee on Immunization Practices' Interim  
363        Recommendation for Use of Janssen COVID-19 Vaccine - United States, February  
364        2021. *MMWR Morb Mortal Wkly Rep* **70**, 329-332 (2021).
- 365   4.    Polack, F.P., *et al.* Safety and Efficacy of the BNT162b2 mRNA Covid-19 Vaccine. *N*  
366        *Engl J Med* **383**, 2603-2615 (2020).
- 367   5.    Aran, D. Estimating real-world COVID-19 vaccine effectiveness in Israel using  
368        aggregated counts. *medRxiv*, 2021.2002.2005.21251139 (2021).
- 369   6.    Baden, L.R., *et al.* Efficacy and Safety of the mRNA-1273 SARS-CoV-2 Vaccine. *N Engl*  
370        *J Med* **384**, 403-416 (2021).
- 371   7.    Sadoff, J., *et al.* Interim Results of a Phase 1-2a Trial of Ad26.COV2.S Covid-19  
372        Vaccine. *N Engl J Med* (2021).
- 373   8.    Thompson, M.G., *et al.* Interim Estimates of Vaccine Effectiveness of BNT162b2 and  
374        mRNA-1273 COVID-19 Vaccines in Preventing SARS-CoV-2 Infection Among Health  
375        Care Personnel, First Responders, and Other Essential and Frontline Workers —  
376        Eight U.S. Locations. *MMWR Morb Mortal Wkly Rep* **ePub**: (2021).
- 377   9.    Zimmermann, P. & Curtis, N. Factors That Influence the Immune Response to  
378        Vaccination. *Clin Microbiol Rev* **32**(2019).
- 379   10.   Poland, G.A. & Jacobson, R.M. Failure to Reach the Goal of Measles Elimination:  
380        Apparent Paradox of Measles Infections in Immunized Persons. *Archives of Internal*  
381        *Medicine* **154**, 1815-1820 (1994).
- 382   11.   NIH. V-safe After Vaccination Health Checker.  
383        <https://www.cdc.gov/coronavirus/2019-ncov/vaccines/safety/vsafe.html>. (2021).
- 384   12.   Chapin-Bardales, J., Gee, J. & Myers, T. Reactogenicity Following Receipt of mRNA-  
385        Based COVID-19 Vaccines. *Jama* (2021).
- 386   13.   Quer, G., *et al.* Wearable sensor data and self-reported symptoms for COVID-19  
387        detection. *Nature Medicine* **27**, 73-77 (2021).
- 388   14.   Quer, G., Gouda, P., Galarnyk, M., Topol, E.J. & Steinhubl, S.R. Inter- and  
389        intraindividual variability in daily resting heart rate and its associations with age,  
390        sex, sleep, BMI, and time of year: Retrospective, longitudinal cohort study of 92,457  
391        adults. *PLoS One* **15**, e0227709 (2020).
- 392   15.   Jaiswal, S.J., *et al.* Association of Sleep Duration and Variability With Body Mass  
393        Index: Sleep Measurements in a Large US Population of Wearable Sensor Users.  
394        *JAMA Internal Medicine* (2020).
- 395   16.   Querec, T.D., *et al.* Systems biology approach predicts immunogenicity of the yellow  
396        fever vaccine in humans. *Nat Immunol* **10**, 116-125 (2009).

- 397 17. Nakaya, H.I. & Pulendran, B. Vaccinology in the era of high-throughput biology.  
398 *Philos Trans R Soc Lond B Biol Sci* **370**(2015).
- 399 18. Kalimuddin, S., *et al.* Early T cell and binding antibody responses are associated with  
400 Covid-19 RNA vaccine efficacy onset. *Med* (2021).
- 401 19. Brodin, P. & Davis, M.M. Human immune system variation. *Nat Rev Immunol* **17**, 21-  
402 29 (2017).
- 403 20. Teijaro, J.R. & Farber, D.L. COVID-19 vaccines: modes of immune activation and  
404 future challenges. *Nature Reviews Immunology* (2021).
- 405 21. Sahin, U., *et al.* COVID-19 vaccine BNT162b1 elicits human antibody and TH1 T cell  
406 responses. *Nature* **586**, 594-599 (2020).
- 407 22. Bahl, K., *et al.* Preclinical and Clinical Demonstration of Immunogenicity by mRNA  
408 Vaccines against H10N8 and H7N9 Influenza Viruses. *Mol Ther* **25**, 1316-1327  
409 (2017).
- 410 23. Gee, J., *et al.* First Month of COVID-19 Vaccine Safety Monitoring - United States,  
411 December 14, 2020-January 13, 2021. *MMWR Morb Mortal Wkly Rep* **70**, 283-288  
412 (2021).
- 413 24. Chu, L., *et al.* A preliminary report of a randomized controlled phase 2 trial of the  
414 safety and immunogenicity of mRNA-1273 SARS-CoV-2 vaccine. *Vaccine* (2021).
- 415 25. Cox, L.S., *et al.* Tackling immunosenescence to improve COVID-19 outcomes and  
416 vaccine response in older adults. *Lancet Healthy Longev* **1**, e55-e57 (2020).
- 417 26. Potluri, T., *et al.* Age-associated changes in the impact of sex steroids on influenza  
418 vaccine responses in males and females. *npj Vaccines* **4**, 29 (2019).
- 419 27. Karjalainen, J. & Viitasalo, M. Fever and cardiac rhythm. *Arch Intern Med* **146**, 1169-  
420 1171 (1986).
- 421 28. Whelton, S.P., *et al.* Association between resting heart rate and inflammatory  
422 biomarkers (high-sensitivity C-reactive protein, interleukin-6, and fibrinogen) (from  
423 the Multi-Ethnic Study of Atherosclerosis). *Am J Cardiol* **113**, 644-649 (2014).
- 424 29. Park, W.C., Seo, I., Kim, S.H., Lee, Y.J. & Ahn, S.V. Association between Resting Heart  
425 Rate and Inflammatory Markers (White Blood Cell Count and High-Sensitivity C-  
426 Reactive Protein) in Healthy Korean People. *Korean J Fam Med* **38**, 8-13 (2017).
- 427 30. Bryant, P.A., Trinder, J. & Curtis, N. Sick and tired: does sleep have a vital role in the  
428 immune system? *Nature Reviews Immunology* **4**, 457-467 (2004).
- 429 31. Bettis, R., *et al.* Impact of influenza treatment with oseltamivir on health, sleep and  
430 daily activities of otherwise healthy adults and adolescents. *Clin Drug Investig* **26**,  
431 329-340 (2006).
- 432 32. Ebinger, J.E., *et al.* Antibody responses to the BNT162b2 mRNA vaccine in  
433 individuals previously infected with SARS-CoV-2. *Nature Medicine* (2021).
- 434 33. Rivera, S.C., *et al.* The impact of patient-reported outcome (PRO) data from clinical  
435 trials: a systematic review and critical analysis. *Health and Quality of Life Outcomes*  
436 **17**, 156 (2019).
- 437 34. Bell, S.K., *et al.* Frequency and Types of Patient-Reported Errors in Electronic Health  
438 Record Ambulatory Care Notes. *JAMA Network Open* **3**, e205867-e205867 (2020).
- 439 35. Basch, E., *et al.* Overall Survival Results of a Trial Assessing Patient-Reported  
440 Outcomes for Symptom Monitoring During Routine Cancer Treatment. *Jama* **318**,  
441 197-198 (2017).



- 442 36. Beaunoyer, E., Dupéré, S. & Guitton, M.J. COVID-19 and digital inequalities:  
443 Reciprocal impacts and mitigation strategies. *Comput Human Behav* **111**, 106424  
444 (2020).  
445 37. Vogels, E.A. About one-in-five Americans use a smart watch or fitness tracker,  
446 [https://www.pewresearch.org/fact-tank/2020/01/09/about-one-in-five-](https://www.pewresearch.org/fact-tank/2020/01/09/about-one-in-five-americans-use-a-smart-watch-or-fitness-tracker/)  
447 [americans-use-a-smart-watch-or-fitness-tracker/](https://www.pewresearch.org/fact-tank/2020/01/09/about-one-in-five-americans-use-a-smart-watch-or-fitness-tracker/). (2020).  
448