

1 **COVID-19 wastewater surveillance in rural communities: Comparison of lagoon**  
2 **and pumping station samples**

3 Patrick M. D'Aoust<sup>1</sup>, Syeda Tasneem Towhid<sup>1</sup>, Élisabeth Mercier<sup>1</sup>, Nada Hegazy<sup>1</sup>, Xin Tian<sup>1</sup>, Kamy Bhatnagar<sup>1</sup>,  
4 Zihao Zhang<sup>1</sup>, Colleen C. Naughton<sup>3</sup>, Alex E. MacKenzie<sup>2</sup>, Tyson E. Graber<sup>2</sup>, Robert Delatolla<sup>1</sup>

5 1: Department of Civil Engineering, University of Ottawa, Ottawa, Ontario, Canada

6 2: Children's Hospital of Eastern Ontario Research Institute, Ottawa, Ontario, Canada

7 3: University of California Merced, Merced, California, United States

## 8 **Abstract**

9 Wastewater-based epidemiology/wastewater surveillance has been a topic of significant interest over the last  
10 year due to its application in SARS-CoV-2 surveillance to track prevalence of COVID-19 in communities. Although  
11 SARS-CoV-2 surveillance has been applied in more than 50 countries to date, the application of this surveillance has  
12 been largely focused on relatively affluent urban and peri-urban communities. As such, there is a knowledge gap  
13 regarding the implementation of reliable wastewater surveillance in small and rural communities for the purpose of  
14 tracking rates of incidence of COVID-19 and other pathogens or biomarkers. This study examines the relationships  
15 existing between SARS-CoV-2 viral signal from wastewater samples harvested from an upstream pumping station and  
16 from an access port at a downstream wastewater treatment lagoon with the community's COVID-19 rate of incidence  
17 (measured as percent test positivity) in a small, rural community in Canada. Real-time quantitative polymerase chain  
18 reaction (RT-qPCR) targeting the N1 and N2 genes of SARS-CoV-2 demonstrate that all 24-hr composite samples  
19 harvested from the pumping station over a period of 5.5 weeks had strong viral signal, while all samples 24-hr composite  
20 samples harvested from the lagoon over the same period were below the limit of quantification. RNA concentrations  
21 and integrity of samples harvested from the lagoon were both lower and more variable than from samples from the  
22 upstream pumping station collected on the same date, indicating a higher overall stability of SARS-CoV-2 RNA  
23 upstream of the lagoon. Additionally, measurements of PMMoV signal in wastewater allowed to normalize SARS-CoV-  
24 2 viral signal for fecal matter content, permitting the detection of actual changes in community prevalence with a high  
25 level of granularity. As a result, in sewered small and rural communities or low-income regions operating wastewater  
26 lagoons, samples for wastewater surveillance should be harvested from pumping stations or the sewershed as opposed  
27 to lagoons.

28

29 Keywords: wastewater treatment lagoon; SARS-CoV-2; wastewater-based epidemiology; wastewater surveillance;  
30 COVID-19; pepper mild mottle virus

31

32

## 33 1. Introduction

34 In late 2019, cases of COVID-19 began to spread rapidly internationally (Li et al., 2020). It became clear to  
35 public health officials across the world that this new disease, caused by the severe acute respiratory syndrome  
36 coronavirus 2 (SARS-COV-2) (Eurosurveillance Editorial Team, 2020), was rapidly becoming a pandemic-potential  
37 pathogen due to its relatively low virulence but high degree of infectiousness (He et al., 2020). More than a year after  
38 the first cases of COVID-19, the world is still grappling with the disease and newer and more infectious variants of the  
39 virus are spreading (Duong, 2021; Galloway et al., 2021; Volz et al., 2020; Walensky et al., 2021), causing widespread  
40 disease and death (WHO COVID-19 Dashboard <https://covid19.who.int/>). At the time of writing (May 20<sup>th</sup>, 2021), more  
41 than 2.4% of the global population (191.1 M) has been infected by SARS-CoV-2, and 2.1% of those infected have died  
42 (4.1 M) ([WHO COVID-19 Dashboard](#)).

43 Now widely applied in over 1,000 sites in more than 50 countries worldwide (Ahmed et al., 2020; Arora et al.,  
44 2020; Bivins et al., 2020b; D'Aoust et al., 2021a; Gonzalez et al., 2020; Mao et al., 2020; Medema et al., 2020; Naughton  
45 et al., 2021; Polo et al., 2020; Randazzo et al., 2020; Sims and Kasprzyk-Hordern, 2020; Thompson et al., 2020),  
46 Wastewater surveillance (WWS) efforts conducted with RT-qPCR are underway around the world, focused primarily in  
47 larger metropolitan areas of higher income countries (Bivins et al., 2020b). By and large rural communities and low-  
48 income countries have not had the same services afforded to them as urban and peri-urban communities (WEF  
49 Network of Wastewater-Based Epidemiology, 2021) and higher income countries, which is based on numerous factors  
50 that include but are not limited to: i) discrepancies in financial and material resources, ii) distance to research, academic  
51 and governmental facilities capable of carrying out the analyses and iii) capacity of the local public health unit to take  
52 in the results and act upon them. Furthermore, smaller, rural communities and low-income countries without larger  
53 mechanical water resource recovery facilities may not have the staff, equipment or expertise to carry out sampling for  
54 SARS-CoV-2 viral detection in wastewater (Haider et al., 2016; Naughton et al., 2021; Switzer et al., 2016). Larger  
55 facilities are often equipped with automatic composite samplers throughout the plant, making the implementation of a  
56 WWS monitoring program in comparison relatively easy for routine purposes. Furthermore, there is a growing  
57 consensus that higher concentrations of SARS-CoV-2 viral particles are found in wastewater solids (Chik et al., 2021;  
58 D'Aoust et al., 2021b; Graham et al., 2020; Peccia et al., 2020; Pecson et al., 2021) and as such several WWS efforts  
59 are now focusing on measuring signal from solid fractions of samples (Chik et al., 2021; Wolfe et al., 2021). In small  
60 and rural communities, harvesting solids may be problematic as dedicated solid separation units present in larger  
61 facilities located in urban and peri-urban communities may not exist in smaller facilities, requiring different sampling  
62 approaches. Unfortunately, the limited resources available in small and rural communities or lower income countries

63 often compromise the WWS efforts. The communities may in turn be at the mercy of funding or mandates due to the  
64 lack physical, material and/or financial resources. As an example of the precariousness of WWS in smaller  
65 communities, Finnish authorities recently announced in June 2021 that they would-be discontinuing SARS-CoV-2  
66 WWS efforts in cities with populations smaller than 150,000 (Finnish institute for health and welfare, 2021). In contrast,  
67 remote communities in the Northwest Territories of Canada have implemented wastewater surveillance to monitor the  
68 communities for COVID-19 viral signal (Government of Northwest Territories, 2021), despite the low population of the  
69 geographic area (<45,000). Having clear guidelines, appropriate analytical methods and low-cost strategies for  
70 surveillance which are also applicable for smaller communities will therefore be critical to ensure that WWS efforts  
71 service the most residents in each region.

72 Most WWS efforts attempt to predict trends of epidemiological metrics of COVID-19 in the general population  
73 by quantifying increases and decreases in the rates of clinical cases of COVID-19 (Bivins et al., 2020a; D'Aoust et al.,  
74 2021a; Hill et al., 2020; Kumar et al., 2021; Polo et al., 2020). These environmental studies will often focus on collecting  
75 samples within the raw influent or primary sludge due to the relatively high concentration of solids in these wastewater  
76 streams (Hill et al., 2020). However, several municipalities operating smaller types of treatment systems such as waste  
77 stabilization ponds, also known as wastewater treatment lagoons, do not have direct access to raw influent or primary  
78 sludge. Smaller communities may however have direct access to the waste stabilization ponds and pumping/lift stations  
79 (MOE Ontario, 2008). Wastewater treatment lagoons are commonly used in the world, with over 1,200 in operation in  
80 Canada (Statistics Canada, 2016), over 5,500 in Europe (Mara, 2009), and over 8,000 in the United States alone  
81 (USEPA, 2011). Solids separation occurs in lagoons due to the slowing of flow velocities, leading to particle settling,  
82 particularly in the same area of the lagoon that oxidizes carbonaceous deleterious substances or in lagoon areas or  
83 isolated lagoon units designed specifically for solids sedimentation (Asano et al., 2007; D'Aoust et al., 2021c; Leblond  
84 et al., 2020). As such, harvesting of wastewater solids in lagoon treatment systems with the goal of performing WWS  
85 is very difficult due to potentially long retention times in lagoons, the degradation of RNA targets due to environmental  
86 temperature fluctuations and the difficulty of collecting "fresh" solids from a lagoon representing current incidence of  
87 COVID-19 in the community. Furthermore, as lagoon systems are located outdoors and exposed to ambient  
88 temperatures, in locales where air temperatures can dip below freezing these systems may become difficult to sample  
89 due to the presence of ice-cover. High temperatures during summer months and UV radiation from sunlight may also  
90 further degrade viral RNA (Verbyla et al., 2017). As a result, smaller communities may not have evident sampling  
91 locations to collect wastewater samples containing SARS-CoV-2 viral particles which can accurately represent changes  
92 in prevalence of the disease in the community. Another factor easing the implementation of WWS programs in small  
93 and rural communities is to see if the community is sewered or not. In communities that are not sewered and where

94 centralized sampling points are not available, sewage brought to lagoons can be sampled from sewage and sludge  
95 trucks while they are being emptied at the facility (Telliard, 1989).

96 In preparation for applying SARS-CoV-2 wastewater surveillance initiatives in a small sewer community in  
97 Eastern Ontario (Canada), wastewater samples were collected from an access/sampling point situated between the  
98 first and second cells of a lagoon treatment system, and from the last pumping station on the sewer network located  
99 upstream of the lagoon treatment system. The specific objectives of this study were to: i) compare SARS-CoV-2 signal  
100 at both sampling locations for strength of the RNA viral signal and RNA integrity and ii) compare the higher integrity  
101 longitudinal SARS-CoV-2 signal to existing community epidemiological data to ascertain the ability of WWS to track  
102 and predict and correlate with trends in rates of incidence of COVID-19 in small and rural communities.

## 103 **2. Experimental methods**

### 104 **Rural community sampling locations**

105 The wastewater of a rural community of less than 5,000 inhabitants in Eastern Ontario (Canada) were sampled  
106 in this study between October 2020 and May 2021 (Figure 1). The rural community is sewer, with the wastewater  
107 flowing into the main pumping station located 1.3 km upstream of a wastewater treatment lagoon. The lagoon system  
108 consists of 3 cells/ponds (total surface area of approximately 182,000 m<sup>2</sup>) operated in-series that flow from cell #1 to  
109 #2 to #3. The lagoon receives continuous inflow with an average daily flow rate of 2,110 m<sup>3</sup>/d. The lagoon system  
110 discharges to a nearby river twice annually, in Spring (Mar. 7<sup>th</sup> to May 15<sup>th</sup>) and Fall (Oct. 1<sup>st</sup> to Dec. 19<sup>th</sup>). The lagoon  
111 system does not include a wetland component. Cell #3 has bottom-mounted aerators that are engaged prior to and  
112 during discharge to strip hydrogen sulfide before the release of treated wastewater to the natural environment. To  
113 control phosphorus concentrations in the final effluent of the lagoon treatment facility, a polyaluminum sulphate solution  
114 is injected directly into the pressurized wastewater pipe following the pumping station (force main) immediately before  
115 being released to the first cell of the lagoon system. The yearly average treatment efficiency of cBOD<sub>5</sub>, total suspended  
116 solids, total phosphorus, total ammonia nitrogen, total Kjeldahl nitrogen and alkalinity is of 96.0%, 94.9%, 98.0%,  
117 96.9%, 94.1% and 64.6% removal efficiency, respectively.

118 Two locations were sampled for wastewater in the rural community: i) the upstream pumping station, which

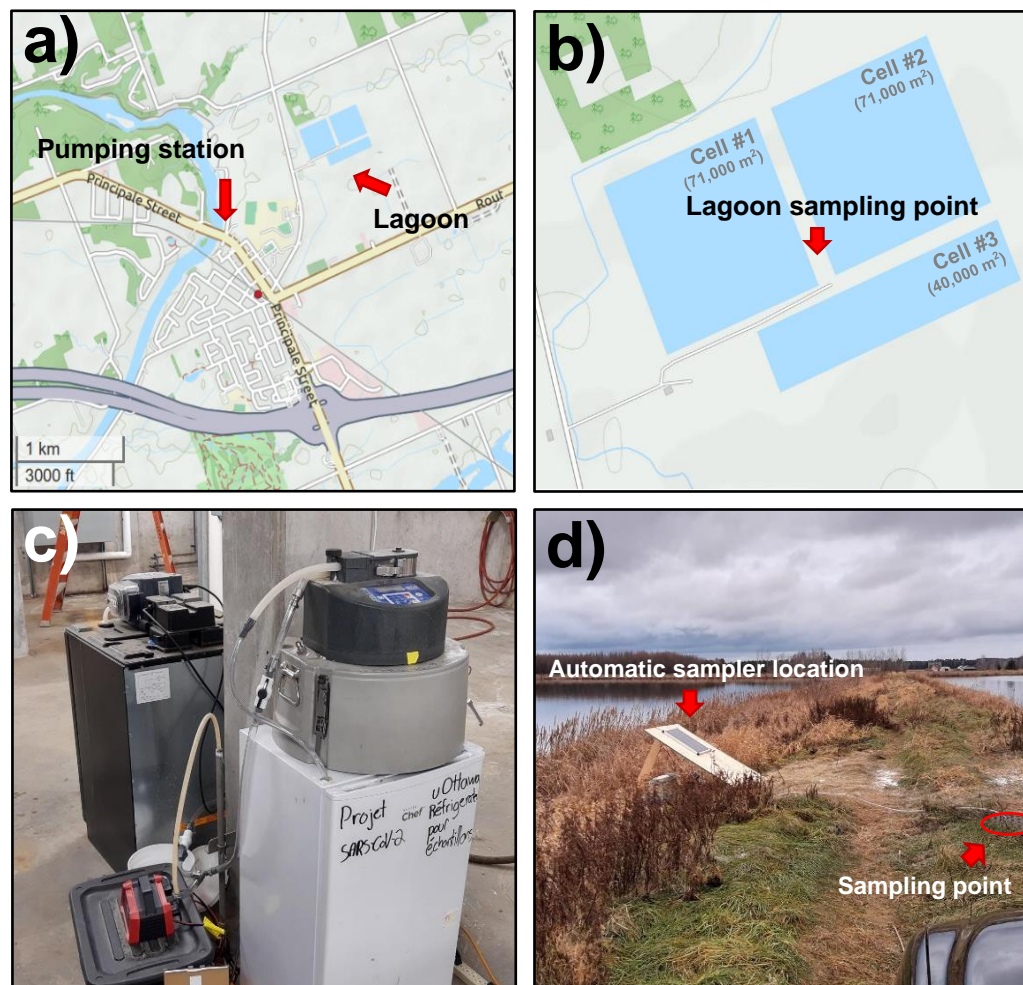


Figure 1: Sampling locations and configurations: a) geographic locations of pumping station and lagoon, b) lagoon treatment system consisting of three cells, identification of sampling point, c) automatic sampler at pumping station, sampler dispenses samples into refrigerator, and d) automatic sampler under the solar panel at lagoon sampling point and sampling point.

119 receives the same annual volumetric flow of wastewater as the wastewater treatment lagoon system itself, and ii) an  
120 access/sampling point situated between cells 1 and 2 of the lagoon treatment system (Figure 1). The wastewater travel  
121 time between the pumping station and the inlet of the lagoon is approximately 15 minutes, while the residence time of  
122 the wastewater at the sampling location between the two cells of the lagoon ranges significantly due to the annual  
123 discharge design of the system (approximated residence times ranging between 80 hours and 10 days during the  
124 period of the study). The typical wastewater characteristics at the pumping station and at the lagoon effluent are shown  
125 in Table 1.

126

127

128 Table 1. Yearly average wastewater characteristics at the pumping station and lagoon effluent.

	Yearly average pumping station wastewater characteristics (avg. $\pm$ standard dev.)	Yearly average pumping lagoon wastewater characteristics (avg. $\pm$ standard dev.)
cBOD <sub>5</sub> (mg/L)	88.4 $\pm$ 80.3	3.5 $\pm$ 0.9
Total suspended solids (mg/L)	224.3 $\pm$ 154.1	11.4 $\pm$ 6.1
Total phosphorus (mg P/L)	8.0 $\pm$ 5.6	0.2 $\pm$ 0.1
Total ammonia nitrogen (mg N/L)	34.2 $\pm$ 10.5	1.1 $\pm$ 1.1
Total Kjeldahl nitrogen (mg N/L)	49.0 $\pm$ 20.9	2.9 $\pm$ 2.2
Alkalinity (mg/L as CaCO <sub>3</sub> )	356.2 $\pm$ 60.4	126.2 $\pm$ 34.0

129

### 130 Sample collection

131 At the pumping station, 24-hr composite samples of wastewater were collected every 3 to 7 days from October  
132 16<sup>th</sup>, 2020, to May 2<sup>nd</sup>, 2021, using an ISCO 6700 series automatic sampler (Teledyne ISCO, Lincoln, NE, USA). The  
133 autosampler located at the pumping station pumped the wastewater into a storage container located inside an adjacent  
134 refrigerator to maintain the samples at 4°C until collection (within 24 hours). At the lagoon sampling point, 24-hr  
135 composite samples of wastewater were also collected every 3 to 7 days from December 3<sup>rd</sup>, 2020, to January 11<sup>th</sup>,  
136 2021. The autosampler located at the lagoon pumped the wastewater into a sealed bottle in an insulated foam container  
137 located adjacent to the autosampler. Outdoor temperatures at the lagoon during the study period (Dec. 3<sup>rd</sup>, 2020, to  
138 Jan. 11<sup>th</sup>, 2021) oscillated between -5.5°C and 1.3°C, hence allowing safe preservation of the samples between  
139 sampling and collection without additional refrigeration being required. composite samples were comprised of twenty-  
140 four 50 mL aliquots. During the pairwise comparison of both locations from Dec. 3<sup>rd</sup>, 2020, to Jan. 11<sup>th</sup>, 2021), the  
141 automatic samplers were programmed to collect samples at the same time at both locations. After every sampling cycle  
142 ended, the composite samples were collected and were transported on ice to the laboratory for analysis. Once in the  
143 laboratory, samples were concentrated immediately, and the resulting pellets were frozen at -30°C and processed  
144 within 14 days. After January 11<sup>th</sup>, site access became difficult due to low outdoor temperatures, freezing of the lagoon,  
145 and snowing conditions, making access to the automatic sampler highly difficult, which led to the cessation of sampling  
146 at the lagoon.

### 147 Sample concentration, extraction, and PCR quantification

148 The composite samples were concentrated by allowing the samples to settle at 4°C for an hour, followed by  
149 the decantation of the supernatant to isolate the settled solids fraction. 40 mL of remaining solid fraction was then  
150 transferred to a 40 mL centrifuge tube and samples were then centrifuged for 45 mins at 10,000 x g at 4°C to isolate  
151 the centrifuged pellet. Sample pellets which could not be immediately processed were frozen at -30°C for a period of  
152 up to 14 days before being extracted. RNA was extracted and purified from the resulting pellet using the RNeasy

153 PowerMicrobiome kit (Qiagen, Germantown, MD, USA) using a QIAcube Connect automated extraction platform, with  
154 the protocol modifications specified in an earlier study (D'Aoust et al., 2021b). The SARS-CoV-2 signal in the samples  
155 was assayed using a singleplex one-step RT-qPCR targeting the N1 and N2 gene regions of SARS-CoV-2 genome.  
156 The signal of pepper mild mottle virus (PMMoV) was also measured in each of the samples (samples were diluted 1/10  
157 for measurements of PMMoV). In each PCR reaction, the reaction mix consisted of 1.5 µl of RNA template, 500 nM of  
158 each of forward and reverse primer (IDT, Kanata, Canada) in 4x TaqMan® Fast Virus 1-step Mastermix (Thermo-Fisher,  
159 USA) with 125 nM probe (IDT, Kanata, Canada) in final volume of 10 µl. The samples were run in triplicates with non-  
160 template controls and were quantified using a five-point gradient of the EDX SARS-CoV-2 COV-19 RNA standard  
161 (Exact Diagnostics, USA). Reverse transcription (RT) was performed at 50°C for 5 minutes followed by RT inactivation  
162 and initial denaturation at 95°C for 20 seconds. This was followed by 45 cycles of denaturation at 95°C for 3 seconds  
163 and annealing/extension at 60°C for 30 seconds with a CFX Connect qPCR thermocycler (Bio-Rad, USA). The assay  
164 limit of detection (ALOD, ≥95% detection) was assessed (D'Aoust et al., 2021b) and determined to be approximately 2  
165 copies/reaction for both N1 and N2 SARS-CoV-2 gene targets. The assay limit of quantification (ALOQ, CV=35%) was  
166 determined to be approximately 3.2 copies/reaction for N1 and 8.1 copies/reaction for N2 SARS-CoV-2 gene targets.  
167 SARS-CoV-2 N1 and N2 gene region viral signals were normalized by dividing the N1 and N2 gene copies per reaction  
168 by the PMMoV gene copies per reaction, as a means of normalizing the N1 and N2 signal by the quantity of fecal matter  
169 in the sample (D'Aoust et al., 2021b, 2021a; Graham et al., 2020; Kitajima et al., 2018). Vesicular stomatitis virus (VSV)  
170 was used as an internal control to monitor the efficiency of the viral concentration and extraction processes and was  
171 spiked into the sample prior to extraction. The extraction efficiency quantified with the VSV spike-in was between 3-  
172 4.5%. All samples were checked for inhibition by diluting the samples by a factor of 4 and 10 and measuring the  
173 corresponding drop in signal of PMMoV.

#### 174 **Assessment of RNA Integrity**

175 Samples were analysed for RNA integrity using an Agilent 2100 Bioanalyzer. RNA (2 µL) of each sample was  
176 loaded on an RNA 6000 Pico Chip (#5067-1513). Data analysis and RNA concentration calculations were performed  
177 using Agilent's proprietary 2100 Expert software (version B.02.10.SI764).

#### 178 **Collection of epidemiological data and correlation to wastewater viral signal**

179 Weekly epidemiological data was obtained from the ICES COVID-19 dashboard  
180 (<https://www.ices.on.ca/DAS/AHRQ/COVID-19-Dashboard>) and the Eastern Ontario Health Unit (EOHU) dashboard  
181 (<https://eohu.ca/en/covid/covid-19-status-update-for-eohu-region>). Correlation analyses were then performed between  
182 the PMMoV-normalized SARS-CoV-2 viral signal in wastewater and the available epidemiological data.



183

### 184 **3. Results & discussion**

185           During the pairwise comparison of samples collected from both locations at the same time-point, all samples  
186 (5/5) from the pumping station showed detectable signal for the N1 and N2 gene regions of SARS-CoV-2 (Figure 2),  
187 as well as for PMMoV. Measurements of viral signal for the N1 gene region of the samples collected from the pumping  
188 station ranged from  $5.5 \times 10^3$  -  $4.6 \times 10^4$  genomic copies/L while measurements for the N2 gene region ranged from  
189  $4.3 \times 10^3$  –  $3.2 \times 10^4$  genomic copies/L. Meanwhile, all composite samples collected at the lagoon sampling point  
190 between cells #1 and #2 of the lagoon were below the ALOQ and the ALOD for the N1 and N2 gene, and 4 out of 5  
191 samples had no detectable SARS-CoV-2 viral signal altogether. During the same short span of side-by-side test period,  
192 PMMoV was only observed in three of the five lagoon samples.

193           In samples collected from the pumping station, measurements of PMMoV ranged from  $1.4 \times 10^5$  –  $4.8 \times 10^6$   
194 genomic copies/L, and in lagoon samples with PMMoV measurements, the PMMoV concentration ranged from  $6.9 \times$   
195  $10^2$  –  $9.9 \times 10^5$  genomic copies/L. The lack of PMMoV signal in some of the lagoon samples could potentially signify  
196 that near complete RNA degradation of PMMoV RNA occurred in the lagoon. When comparing viral signal  
197 measurements from the RT-qPCR analyses for the N1 and N2 SARS-CoV-2 gene regions and PMMoV between the  
198 pumping station and lagoon samples, pairwise comparisons clearly outline a stronger detection of both SARS-CoV-2  
199 N gene regions and PMMoV viral signal in the samples collected from the pumping station (Figure 2). Furthermore,  
200 due to the ubiquity of PMMoV in wastewater, observing PMMoV measurements may allow to distinguish SARS-CoV-2  
201 N1 and N2 gene region true non-detects from false-negatives caused by sample degradation or severe inhibition of the  
202 sample (Hong et al., 2021).

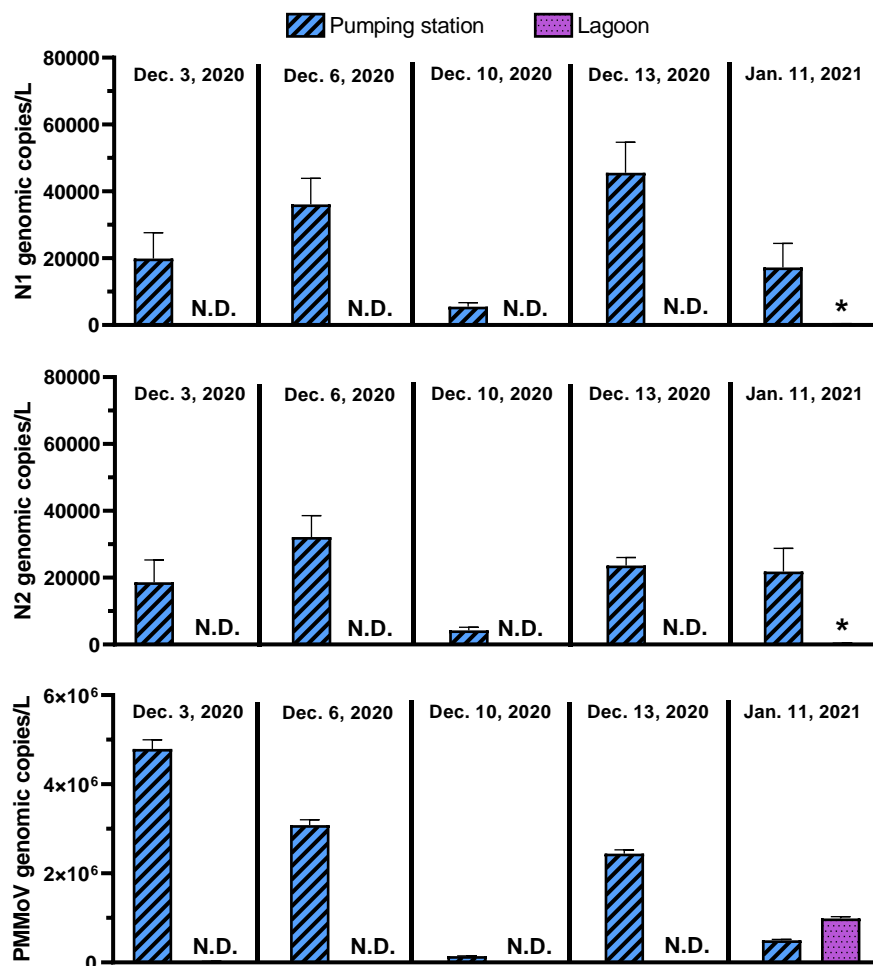


Figure 1: Comparison of genomic copies/L of pumping station samples and waste stabilization pond samples over time for the N1 and N2 SARS-CoV-2 gene regions, and PMMoV. Bars with a star (\*) indicate that the sample signal was below the ALOQ.

203 RNA of the SARS-CoV-2 and PMMoV targets in samples collected from the sampling location in the lagoon  
 204 may have experienced more degradation due to extended residence times within the lagoon. Although temperature  
 205 and storage time have been shown to affect SARS-CoV-2 viral signal degradation in wastewater (Hart and Halden,  
 206 2020), the similar storage temperature of the pumping station and lagoon samples during the pairwise study along with  
 207 the short storage time until analysis enable this study to isolate the difference in signals to the conditions of the two  
 208 sampling locations. Furthermore, due to the low temperature of the wastewater in the pumping station and within the  
 209 lagoon during the study, viral degradation due to elevated temperatures is not a likely pathway of degradation. It is also  
 210 possible that the RNA of the samples in the lagoon may have been subject to UV degradation once within the lagoon  
 211 itself (Fongaro et al., 2012; Verbyla et al., 2017). Furthermore, as SARS-CoV-2 viral particles are believed to likely  
 212 partition preferentially to wastewater solids in typical wastewater conditions (Arora et al., 2020; Chakraborty et al., 2021;

213 D'Aoust et al., 2021a; Graham et al., 2020; McLellan et al., 2021), a significant portion of the viral RNA may have settled  
214 throughout the first lagoon cell as the flow velocity of the wastewater immediately decreases upon entering the lagoon  
215 system's first cell. Additionally, this facility doses polyaluminum sulphate for phosphorus abatement, which likely  
216 contributes to a more rapid and pronounced settling of solids. It is believed that the polyaluminum may also help  
217 flocculate SARS-CoV-2 genetic material, as evidenced by several studies employing aluminum-driven flocculation  
218 concentration methods (Barril et al., 2021; Randazzo et al., 2020). It is noted that all mechanisms contributing to  
219 potential degradation of viral signal in the lagoon are symptomatic of treatment of wastewater in the lagoon. Further  
220 investigations with a control location which does not use polyaluminum sulphate could be conducted to verify this  
221 hypothesis.

222 Total RNA concentrations were measured in a series of samples collected from the pumping station and the  
223 lagoon sampling point. Results of the analyses are shown in Figure 3. RNA concentrations are distinctly lower in lagoon  
224 samples as compared to pumping station samples. This is likely due to the presence of less fecally-associated biological  
225 material or greater degradation in the material collected in the samples collected in the lagoon.

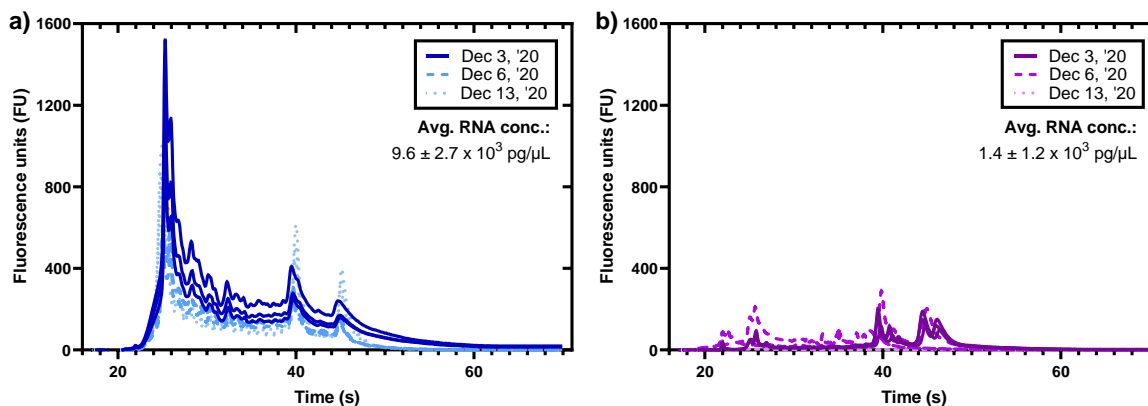


Figure 2: Electropherograms of samples from the a) pumping station and the b) lagoon, showing drastic differences in the RNA profiles.

226 The epidemiological data pertaining to this study were not available at the granulation of the studied  
227 community itself (pop.: ~4,000; ~5 km<sup>2</sup>), but rather for a larger geographical region (pop.: ~200,000; ~5,300 km<sup>2</sup>) that  
228 includes the community. The lack of available epidemiological data for the small community itself is indicative of the  
229 need for additional resources for small, rural communities and the potential for the application of WWS in these  
230 communities as an effective indicator of incidence of infections at the granulation of the community. Further, the clinical  
231 metric that was available at the geographic region level was percent positivity as opposed to daily clinical new cases.  
232 As such, this study compares the SARS-CoV-2 viral signal in wastewater to the percent positivity data acquired at the

233 geographic region. The studied rural community (2,500-5,000 people) represents approximately 2% of the whole  
234 population within the health unit's geographical boundaries for which epidemiological data are available. Although travel  
235 between communities in this geographic area is common, it is noted that presentation of the community SARS-CoV-2  
236 viral signal against the epidemiological data at the geographic region level assumes that this town and its citizens  
237 behave similar to the residents of the larger region, which may not necessarily be a correct assumption. However, due  
238 to the limitations of available epidemiological information no other data were available to perform a comparison. As  
239 outlined by these results, it appears that samples harvested from the pumping station of the community could provide  
240 similar viral signal trends to the clinical data sets, making the pumping station a suitable sampling location for rural  
241 communities that are serviced by wastewater treatment lagoons. It is hypothesized that samples collected from the last  
242 pumping station of a smaller rural community will have similar usability for wastewater surveillance to samples collected  
243 from influent of a larger mechanical wastewater treatment plant.

244           When comparing the pumping station samples expressed as PMMoV-normalized viral genomic copies, viral  
245 genomic copies per gram of wastewater solids and viral genomic copies per L to available epidemiological data (clinical  
246 test percent positivity for the whole population) (Figure 4), a degree of visible agreement could be seen between the  
247 SARS-CoV-2 viral signal in wastewater and the reported percent positivity in the geographic region. However, this  
248 comparison may not be of significant relevance as the clinical data references a larger geographical zone than the  
249 sampled sewershed. It has been outlined in several studies that mass or volumetric normalization of SARS-CoV-2 viral  
250 signal alone may not truly capture sewershed dilution effects (Bivins et al., 2021; D'Aoust et al., 2021b; Wu et al., 2020).  
251 Furthermore, it is believed that while not observed or demonstrated with solid mass (copies/g) or volume (copies/L)  
252 normalized SARS-CoV-2 viral genomic copies, PMMoV-normalized viral genomic copies show a true change in  
253 community prevalence as the normalization with PMMoV helps account for the intrinsic quantity of fecal material in the  
254 wastewater (Graham et al., 2020; Kitamura et al., 2021; Wolfe et al., 2021; Wu et al., 2021). PMMoV normalization in  
255 WWS applications is believed to be particularly important in the context of surveillance of fecally shed pathogens as it  
256 allows to call true localized changes in prevalence which could otherwise be missed without normalizing for the quantity  
257 of fecal material in wastewater.

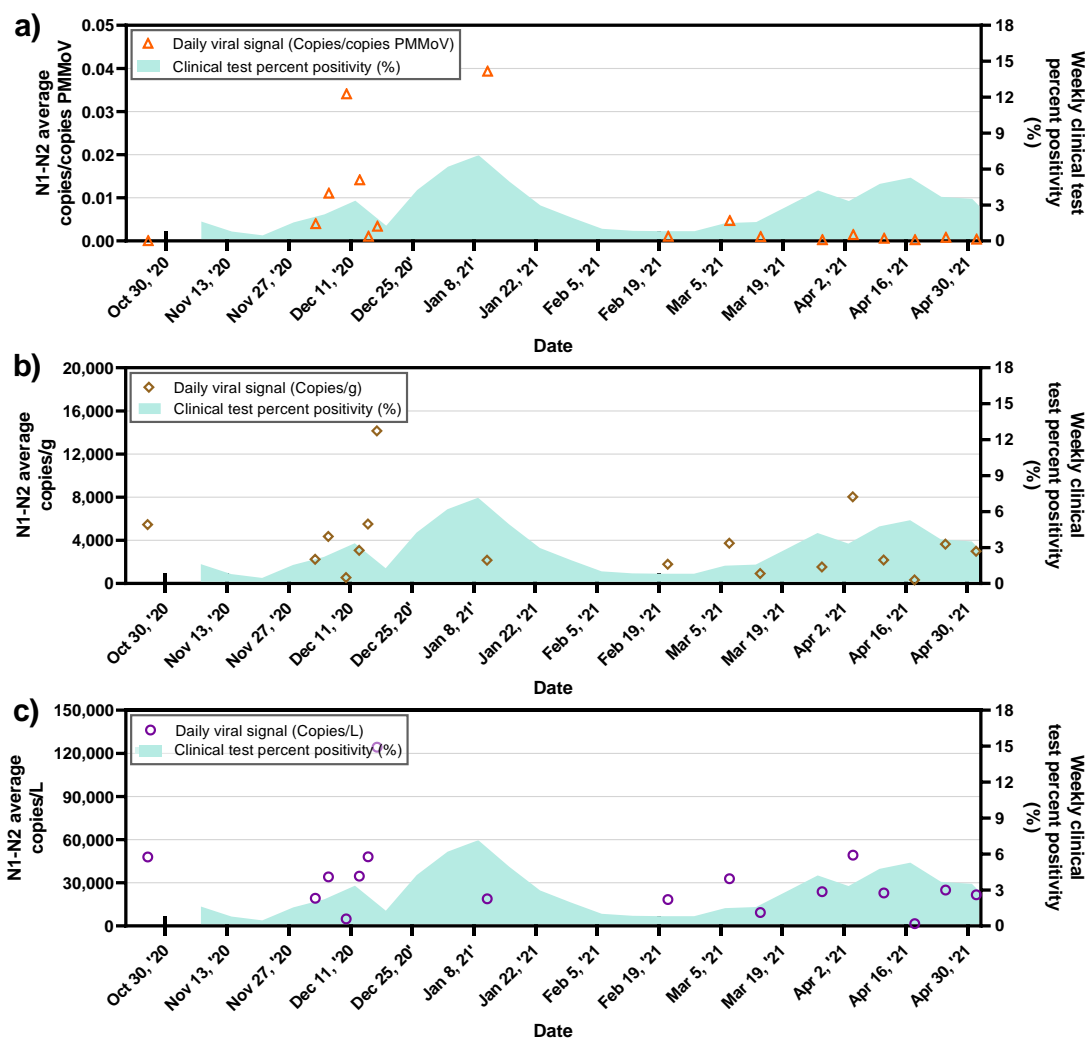


Figure 3: Average SARS-CoV-2 signal in the pumping station wastewater samples expressed as a) PMMoV normalized SARS-CoV-2 viral genomic copies, b) SARS-CoV-2 viral copies/g and c) SARS-CoV-2 viral genomic copies/L, along with the weekly COVID-19 test percent positivity.

## 259 **4. Conclusions and recommendations**

260 As many locations throughout the world have experienced new resurgence in COVID-19 cases due to the  
261 rapid spread of infectious variants of concern, it has become increasingly important for communities to implement  
262 effective COVID-19 wastewater monitoring programs that can rapidly detect and predict upcoming resurgences in  
263 COVID-19 cases. WWS programs may provide epidemiological information at a higher level of granularity to public  
264 health units than what is currently available in small, rural communities and low-income countries. Unfortunately, such  
265 programs are not frequently found in smaller, rural communities or low-income countries, and these communities often  
266 rely on low-cost, more passive treatment systems, compounding the gap of knowledge between the application of WWS  
267 to high-income, peri-urban and urban communities compared to low-income and rural communities. These smaller  
268 communities are particularly vulnerable to changes in funding or mandates as they may not have the resources to take  
269 over or start WWS initiatives on their own.

270 In this study, it was observed that in municipalities with wastewater lagoons, surveillance of changes in  
271 incidence of COVID-19 in the general population is possible via sampling from an upstream pumping station within the  
272 sewershed. Measurements of N1 and N2 SARS-CoV-2 gene regions and PMMoV in wastewater demonstrate  
273 consistent strong detection in samples collected at the upstream pumping station, but not from samples collected in  
274 wastewater treatment lagoons. Preliminary results show that samples collected from the wastewater treatment lagoon  
275 dosing polyaluminum sulphate for phosphorus removal demonstrates significant weaker detection due to potential  
276 preferential partitioning of SARS-CoV-2 viral particles to solids which rapidly settle upon entering the lagoon inlet  
277 structure. Furthermore, degradation of SARS-CoV-2 and PMMoV genetic material in the lagoon may be associated  
278 with the long retention time of the system. Finally, UV light exposure and degradation of the genetic material may also  
279 be a potentially significant mechanism of genetic material degradation. Even though SARS-CoV-2 genetic material is  
280 largely attached/associated to solids, the long retention time of the lagoon system may enable UV degradation of the  
281 solids partitioned material across a significant period of time. Additionally, it is observed that PMMoV-normalized viral  
282 signal may allow for detection of true increases in prevalence by normalizing measurements for the quantity of fecal  
283 material in wastewater. By observing PMMoV viral signal in wastewater, it may also be possible to distinguish SARS-  
284 CoV-2 N1 and N2 non-detects from false-negatives caused by sample degradation or severe inhibition. Finally, it is  
285 observed that wastewater-acquired SARS-CoV-2 viral signal from the upstream pumping station can be measured  
286 without difficulty and as such, could be used effectively in tandem with local epidemiological data to help detect and  
287 track new and existing COVID-19 outbreaks, even where localized increases in COVID-19 prevalence would not be  
288 visible with low granularity publicly available weekly regional epidemiological information.

## 289 **Declaration of competing interests**

290           The authors declare that no known competing financial interests or personal relationships could appear to  
291 influence the work reported in this manuscript.

## 292 **Acknowledgements**

293           The authors wish to acknowledge the help and assistance of the University of Ottawa, the Ottawa Hospital,  
294 the Children's Hospital of Eastern Ontario, the Children's Hospital of Eastern Ontario's Research Institute, Public Health  
295 Ontario and all their employees involved in the project. Their time, facilities, resources, and feedback are greatly  
296 appreciated. The authors also wish to specifically outline the assistance of Mr. Alain Castonguay.

## 297 **Funding**

298           This research was supported by the Province of Ontario's Wastewater Surveillance Initiative (WSI). This  
299 research was also supported by a CHEO (Children's Hospital of Eastern Ontario) CHAMO (Children's Hospital  
300 Academic Medical Organization) grant, awarded to Dr. Alex E. MacKenzie.

## 301 5. References

- 302 Ahmed, W., Angel, N., Edson, J., Bibby, K., Bivins, A., O'Brien, J.W., Choi, P.M., Kitajima, M., Simpson, S.L., Li, J.,  
303 Tschärke, B., Verhagen, R., Smith, W.J.M., Zaugg, J., Dierens, L., Hugenholtz, P., Thomas, K. V., Mueller, J.F.,  
304 2020. First confirmed detection of SARS-CoV-2 in untreated wastewater in Australia: A proof of concept for the  
305 wastewater surveillance of COVID-19 in the community. *Sci. Total Environ.* 728, 138764.  
306 <https://doi.org/10.1016/j.scitotenv.2020.138764>
- 307 Arora, S., Nag, A., Sethi, J., Rajvanshi, J., Saxena, S., Shrivastava, S.K., Gupta, A.B., 2020. Sewage surveillance for  
308 the presence of SARS-CoV-2 genome as a useful wastewater based epidemiology (WBE) tracking tool in India.  
309 *Water Sci. Technol.* 82, 2823–2836. <https://doi.org/10.2166/wst.2020.540>
- 310 Asano, T., Burton, F.L., Leverenz, H.L., Tsuchihashi, R., Tchobanoglous, G., 2007. *Water Reuse Issues, Technologies,  
311 and Applications*, 1st editio. ed, Journal of Chemical Information and Modeling. McGraw-Hill.
- 312 Barril, P.A., Pianciola, L.A., Mazzeo, M., Ousset, M.J., Jaureguiberry, M.V., Alessandrello, M., Sánchez, G., Oteiza,  
313 J.M., 2021. Evaluation of viral concentration methods for SARS-CoV-2 recovery from wastewaters. *Sci. Total  
314 Environ.* 756, 144105. <https://doi.org/10.1016/j.scitotenv.2020.144105>
- 315 Bivins, A., Greaves, J., Fischer, R., Yinda, K.C., Ahmed, W., Kitajima, M., Munster, V.J., Bibby, K., 2020a. Persistence  
316 of SARS-CoV-2 in Water and Wastewater. *Environ. Sci. Technol. Lett.*  
317 <https://doi.org/10.1021/acs.estlett.0c00730>
- 318 Bivins, A., North, D., Ahmad, A., Ahmed, W., Alm, E., Been, F., Bhattacharya, P., Bijlsma, L., Boehm, A.B., Brown, J.,  
319 Buttiglieri, G., Calabro, V., Carducci, A., Castiglioni, S., Cetecioglu Gurol, Z., Chakraborty, S., Costa, F., Curcio,  
320 S., De Los Reyes, F.L., Delgado Vela, J., Farkas, K., Fernandez-Casi, X., Gerba, C., Gerrity, D., Girones, R.,  
321 Gonzalez, R., Haramoto, E., Harris, A., Holden, P.A., Islam, M.T., Jones, D.L., Kasprzyk-Hordern, B., Kitajima,  
322 M., Kotlarz, N., Kumar, M., Kuroda, K., La Rosa, G., Malpei, F., Mautus, M., McLellan, S.L., Medema, G.,  
323 Meschke, J.S., Mueller, J., Newton, R.J., Nilsson, D., Noble, R.T., Van Nuijs, A., Peccia, J., Perkins, T.A.,  
324 Pickering, A.J., Rose, J., Sanchez, G., Smith, A., Stadler, L., Stauber, C., Thomas, K., Van Der Voorn, T.,  
325 Wigginton, K., Zhu, K., Bibby, K., 2020b. Wastewater-Based Epidemiology: Global Collaborative to Maximize  
326 Contributions in the Fight against COVID-19. *Environ. Sci. Technol.* 54, 7754–7757.  
327 <https://doi.org/10.1021/acs.est.0c02388>
- 328 Bivins, A., North, D., Wu, Z., Shaffer, M., Ahmed, W., Bibby, K., 2021. Within-Day Variability of SARS-CoV-2 RNA in  
329 Municipal Wastewater Influent During 1 Periods of Varying COVID-19 Prevalence and Positivity 2. *medRxiv*  
330 2021.03.16.21253652.
- 331 Chakraborty, P., Pasupuleti, M., Jai Shankar, M.R., Bharat, G.K., Krishnasamy, S., Dasgupta, S.C., Sarkar, S.K., Jones,  
332 K.C., 2021. First surveillance of SARS-CoV-2 and organic tracers in community wastewater during post lockdown  
333 in Chennai, South India: Methods, occurrence and concurrence. *Sci. Total Environ.* 778, 146252.  
334 <https://doi.org/10.1016/j.scitotenv.2021.146252>
- 335 Chik, A.H.S., Glier, M.B., Servos, M., Mangat, C.S., Pang, X., Qiu, Y., D'Aoust, P.M., Burnet, J.-B., Delatolla, R., Dorner,  
336 S., Giesy, J.P.J., McKay, M., Prystajecy, N., Srikanthan, N., Xie, Y., Conant, B., Hruddy, S.E., 2021. Comparison  
337 of approaches to quantify SARS-CoV-2 in wastewater using RT-qPCR: Results and implications from a  
338 collaborative inter-laboratory study in Canada *Journal of Environmental Sciences. J. Environ. Sci.* (in-press).
- 339 D'Aoust, P.M., Graber, T.E., Mercier, E., Montpetit, D., Alexandrov, I., Neault, N., Baig, A.T., Mayne, J., Zhang, X.,  
340 Alain, T., Servos, M.R., Srikanthan, N., MacKenzie, M., Figeys, D., Manuel, D., Jüni, P., MacKenzie, A.E.,  
341 Delatolla, R., 2021a. Catching a resurgence: Increase in SARS-CoV-2 viral RNA identified in wastewater 48 h  
342 before COVID-19 clinical tests and 96 h before hospitalizations. *Sci. Total Environ.* 770.  
343 <https://doi.org/10.1016/j.scitotenv.2021.145319>
- 344 D'Aoust, P.M., Mercier, É., Montpetit, D., Jia, J., Alexandrov, I., Neault, N., Baig, A.T., Mayne, J., Zhang, X., Alain, T.,  
345 Langlois, M.-A., Servos, M.R., MacKenzie, M., Figeys, D., MacKenzie, A.E., Graber, T.E., Delatolla, R., 2021b.  
346 Quantitative analysis of SARS-CoV-2 RNA from wastewater solids in communities with low COVID-19 incidence  
347 and prevalence. *Water Res.* 188, 116560. <https://doi.org/10.1016/j.watres.2020.116560>
- 348 D'Aoust, P.M., Vincent, S., LeBlond, G., Arabgol, R., Hérard, R., Ahmed, W., Guilherme, S., Kinsley, C., Delatolla, R.,  
349 2021c. Upgrading municipal lagoons in temperate and cold climates: Total nitrogen removal and phosphorus  
350 assimilation at ultra-low temperatures. *Water Environ. J.* 1–13. <https://doi.org/10.1111/wej.12736>



- 351 Duong, D., 2021. What's important to know about the new COVID-19 variants? *CMAJ* 193, E141–E142.  
352 <https://doi.org/10.1503/cmaj.1095915>
- 353 Eurosurveillance Editorial Team, 2020. Note from the editors: World Health Organization declares novel coronavirus  
354 (2019-nCoV) sixth public health emergency of international concern. *Euro Surveill.* 25, 2019–2020.  
355 <https://doi.org/10.2807/1560-7917.ES.2020.25.5.200131e>
- 356 Finnish institute for health and welfare, 2021. Coronavirus waste water monitoring will now focus on the largest cities -  
357 News - THL [WWW Document]. URL [https://thl.fi/en/web/thlfi-en/-/coronavirus-waste-water-monitoring-will-now-](https://thl.fi/en/web/thlfi-en/-/coronavirus-waste-water-monitoring-will-now-focus-on-the-largest-cities?redirect=%2Fen%2Fweb%2Fthlfi-en%2Fwhats-new%2Fpress-releases-and-news%2Fnews)  
358 [focus-on-the-largest-cities?redirect=%2Fen%2Fweb%2Fthlfi-en%2Fwhats-new%2Fpress-releases-and-](https://thl.fi/en/web/thlfi-en/-/coronavirus-waste-water-monitoring-will-now-focus-on-the-largest-cities?redirect=%2Fen%2Fweb%2Fthlfi-en%2Fwhats-new%2Fpress-releases-and-news%2Fnews)  
359 [news%2Fnews](https://thl.fi/en/web/thlfi-en/-/coronavirus-waste-water-monitoring-will-now-focus-on-the-largest-cities?redirect=%2Fen%2Fweb%2Fthlfi-en%2Fwhats-new%2Fpress-releases-and-news%2Fnews) (accessed 7.14.21).
- 360 Fongaro, G., Nascimento, M.A., Viancelli, A., Tonetta, D., Petrucio, M.M., Barardi, C.R.M., 2012. Surveillance of human  
361 viral contamination and physicochemical profiles in a surface water lagoon. *Water Sci. Technol.* 66, 2682–2687.  
362 <https://doi.org/10.2166/wst.2012.504>
- 363 Galloway, S.E., Paul, P., MacCannell, D.R., Johansson, M.A., Brooks, J.T., MacNeil, A., Slayton, R.B., Tong, S., Silk,  
364 B.J., Armstrong, G.L., Biggerstaff, M., Dugan, V.G., 2021. Emergence of SARS-CoV-2 B.1.1.7 Lineage. *Morb.*  
365 *Mortal. Wkly. Rep.* 70, 95–99.
- 366 Gonzalez, R., Curtis, K., Bivins, A., Bibby, K., Weir, M.H., Yetka, K., Thompson, H., Keeling, D., Mitchell, J., Gonzalez,  
367 D., 2020. COVID-19 surveillance in Southeastern Virginia using wastewater-based epidemiology. *Water Res.*  
368 186, 116296. <https://doi.org/10.1016/j.watres.2020.116296>
- 369 Government of Northwest Territories, 2021. Wastewater (sewage) testing | GNWT's Response to COVID-19 [WWW  
370 Document]. URL <https://www.gov.nt.ca/covid-19/en/wastewater-sewage-testing> (accessed 7.14.21).
- 371 Graham, K.E., Loeb, S.K., Wolfe, M.K., Catoe, D., Sinnott-Armstrong, N., Kim, S., Yamahara, K.M., Sassoubre, L.M.,  
372 Mendoza Grijalva, L.M., Roldan-Hernandez, L., Langenfeld, K., Wigginton, K.R., Boehm, A.B., 2020. SARS-CoV-  
373 2 RNA in Wastewater Settled Solids Is Associated with COVID-19 Cases in a Large Urban Sewershed. *Environ.*  
374 *Sci. Technol.* *acs.est.0c06191*. <https://doi.org/10.1021/acs.est.0c06191>
- 375 Haider, H., Sadiq, R., Tesfamariam, S., 2016. Inter-Utility Performance Benchmarking Model for Small-to-Medium-  
376 Sized Water Utilities: Aggregated Performance Indices. *J. Water Resour. Plan. Manag.* 142, 04015039.  
377 [https://doi.org/10.1061/\(asce\)wr.1943-5452.0000552](https://doi.org/10.1061/(asce)wr.1943-5452.0000552)
- 378 Hart, O.E., Halden, R.U., 2020. Computational analysis of SARS-CoV-2/COVID-19 surveillance by wastewater-based  
379 epidemiology locally and globally: Feasibility, economy, opportunities and challenges. *Sci. Total Environ.* 730,  
380 138875. <https://doi.org/10.1016/j.scitotenv.2020.138875>
- 381 He, X., Lau, E.H.Y., Wu, P., Deng, X., Wang, J., Hao, X., Lau, Y.C., Wong, J.Y., Guan, Y., Tan, X., Mo, X., Chen, Y.,  
382 Liao, B., Chen, W., Hu, F., Zhang, Q., Zhong, M., Wu, Y., Zhao, L., Zhang, F., Cowling, B.J., Li, F., Leung, G.M.,  
383 2020. Temporal dynamics in viral shedding and transmissibility of COVID-19. *Nat. Med.* 26, 672–675.  
384 <https://doi.org/10.1038/s41591-020-0869-5>
- 385 Hill, K., Zamyadi, A., Deere, D., Vanrolleghem, P.A., Crosbie, N.D., 2020. SARS-CoV-2 known and unknowns,  
386 implications for the water sector and wastewater-based epidemiology to support national responses worldwide:  
387 early review of global experiences with the COVID-19 pandemic. *Water Qual. Res. J.* 1–11.  
388 <https://doi.org/10.2166/wqrj.2020.100>
- 389 Hong, P.Y., Rachmadi, A.T., Mantilla-Calderon, D., Alkahtani, M., Bashawri, Y.M., Al Qarni, H., O'Reilly, K.M., Zhou,  
390 J., 2021. Estimating the minimum number of SARS-CoV-2 infected cases needed to detect viral RNA in  
391 wastewater: To what extent of the outbreak can surveillance of wastewater tell us? *Environ. Res.* 195, 110748.  
392 <https://doi.org/10.1016/j.envres.2021.110748>
- 393 Kitajima, M., Sassi, H.P., Torrey, J.R., 2018. Pepper mild mottle virus as a water quality indicator. *npj Clean Water* 1.  
394 <https://doi.org/10.1038/s41545-018-0019-5>
- 395 Kitamura, K., Sadamasu, K., Muramatsu, M., Yoshida, H., 2021. Efficient detection of SARS-CoV-2 RNA in the solid  
396 fraction of wastewater. *Sci. Total Environ.* 763, 144587. <https://doi.org/10.1016/j.scitotenv.2020.144587>
- 397 Kumar, M., Joshi, M., Patel, A.K., Joshi, C.G., 2021. Unravelling the early warning capability of wastewater surveillance  
398 for COVID-19: A temporal study on SARS-CoV-2 RNA detection and need for the escalation. *Environ. Res.* 196,  
399 110946. <https://doi.org/10.1016/j.envres.2021.110946>
- 400 Leblond, G., D'Aoust, P.M., Kinsley, C., Delatolla, R., 2020. Wastewater lagoon solids, phosphorus, and algae removal

- 401 using discfiltration. *Water Qual. Res. J. Canada* 55, 382–393. <https://doi.org/10.2166/wqrj.2020.013>
- 402 Li, X., Xu, W., Dozier, M., He, Y., Kirolos, A., Theodoratou, E., 2020. The role of children in transmission of SARS-CoV-  
403 2: A rapid review. *J. Glob. Health* 10, 1–10. <https://doi.org/10.7189/JOGH.10.011101>
- 404 Mao, K., Zhang, K., Du, W., Ali, W., Feng, X., Zhang, H., 2020. The potential of wastewater-based epidemiology as  
405 surveillance and early warning of infectious disease outbreaks. *Curr. Opin. Environ. Sci. Heal.* 17, 1–7.  
406 <https://doi.org/10.1016/j.coesh.2020.04.006>
- 407 Mara, D., 2009. Waste stabilization ponds: Past, present and future. *Desalin. Water Treat.* 4, 85–88.  
408 <https://doi.org/10.5004/dwt.2009.359>
- 409 McLellan, S.L., Feng, S., Roguet, A., McClary-Gutierrez, J.S., Newton, R.J., Kloczko, N., Meiman, J.G., 2021. Evaluation  
410 of sampling frequency and normalization of SARS-CoV-2 wastewater concentrations for capturing COVID-19  
411 burdens in the community. *medRxiv* 1, 2021.02.17.21251867.
- 412 Medema, G., Heijnen, L., Elsinga, G., Italiaander, R., Brouwer, A., 2020. Presence of SARS-Coronavirus-2 RNA in  
413 Sewage and Correlation with Reported COVID-19 Prevalence in the Early Stage of the Epidemic in The  
414 Netherlands. *Environ. Sci. Technol. Lett.* 7, 511–516. <https://doi.org/10.1021/acs.estlett.0c00357>
- 415 MOE Ontario, 2008. Design guidelines for sewage works, Ontario Ministry of the Environment. Canada.
- 416 Naughton, C.C., Roman, F.A., Alvarado, A.G.F., Tariqi, A.Q., Deeming, M.A., Bibby, K., Bivins, A., Rose, J.B., Medema,  
417 G., Katsivelis, P., Allan, V., Sinclair, R., Zhang, Y., Maureen, N., 2021. Show us the Data: Global COVID-19  
418 Wastewater Monitoring Efforts, Equity, and Gaps. *medRxiv* 1–15.
- 419 Peccia, J., Zulli, A., Brackney, D.E., Grubaugh, N.D., Kaplan, E.H., Casanovas-Massana, A., Ko, A.I., Malik, A.A.,  
420 Wang, D., Wang, M., Warren, J.L., Weinberger, D.M., Arnold, W., Omer, S.B., 2020. Measurement of SARS-  
421 CoV-2 RNA in wastewater tracks community infection dynamics. *Nat. Biotechnol.* 38, 1164–1167.  
422 <https://doi.org/10.1038/s41587-020-0684-z>
- 423 Pecson, B.M., Darby, E., Haas, C.N., Amha, Y.M., Bartolo, M., Danielson, R., Dearborn, Y., Di Giovanni, G., Ferguson,  
424 C., Fevig, S., Gaddis, E., Gray, D., Lukasik, G., Mull, B., Olivas, L., Olivieri, A., Qu, Y., SARS-CoV-2  
425 Interlaboratory Consortium, 2021. Reproducibility and sensitivity of 36 methods to quantify the SARS-CoV-2  
426 genetic signal in raw wastewater: findings from an interlaboratory methods evaluation in the U.S. *Environ. Sci.*  
427 *Water Res. Technol.* <https://doi.org/10.1039/d0ew00946f>
- 428 Polo, D., Quintela-Baluja, M., Corbishley, A., Jones, D.L., Singer, A.C., Graham, D.W., Romalde, J.L., 2020. Making  
429 waves: Wastewater-based epidemiology for COVID-19 – approaches and challenges for surveillance and  
430 prediction. *Water Res.* 186, 116404. <https://doi.org/10.1016/j.watres.2020.116404>
- 431 Randazzo, W., Truchado, P., Cuevas-Ferrando, E., Simón, P., Allende, A., Sánchez, G., 2020. SARS-CoV-2 RNA in  
432 wastewater anticipated COVID-19 occurrence in a low prevalence area. *Water Res.* 181.  
433 <https://doi.org/10.1016/j.watres.2020.115942>
- 434 Sims, N., Kasprzyk-Hordern, B., 2020. Future perspectives of wastewater-based epidemiology: Monitoring infectious  
435 disease spread and resistance to the community level. *Environ. Int.* 139, 105689.  
436 <https://doi.org/10.1016/j.envint.2020.105689>
- 437 Statistics Canada, 2016. Canada's Core Public Infrastructure Survey: Wastewater and solid waste assets, 2016.
- 438 Switzer, D., Teodoro, M.P., Karasik, S., 2016. The human capital resource challenge: Recognizing and overcoming  
439 small utility workforce obstacles. *J. Am. Water Works Assoc.* 108, E416–E424.  
440 <https://doi.org/10.5942/jawwa.2016.108.0093>
- 441 Telliard, W.A., 1989. Sampling procedures and protocols for the national sewage sludge survey. Environmental  
442 Protection Agency, Washington, DC (United States). Office of ...
- 443 Thompson, J.R., Nancharaiyah, Y. V., Gu, X., Lee, W.L., Rajal, V.B., Haines, M.B., Girones, R., Ng, L.C., Alm, E.J.,  
444 Wuertz, S., 2020. Making waves: Wastewater surveillance of SARS-CoV-2 for population-based health  
445 management. *Water Res.* 184. <https://doi.org/10.1016/j.watres.2020.116181>
- 446 USEPA, 2011. Principles of design and operations of wastewater treatment pond systems for plant operators,  
447 engineers, and managers, 2nd ed. US Environmental Protection Agency Cincinnati, OH, Cincinnati, OH.
- 448 Verbyla, M.E., von Sperling, M., Maiga, Y., 2017. Waste Stabilization Ponds, in: Mihelcic, J.R., Verbyla, M.E. (Eds.),

- 449 Water and Sanitation for the 21st Century: Health and Microbiological Aspects of Excreta and Wastewater  
450 Management (Global Water Pathogen Project). Michigan State University, Lansing, MI.  
451 <https://doi.org/10.14321/waterpathogens.65>
- 452 Volz, E., Hill, V., McCrone, J.T., Price, A., Jorgensen, D., O'Toole, Á., Southgate, J., Johnson, R., Jackson, B.,  
453 Nascimento, F.F., Rey, S.M., Nicholls, S.M., Colquhoun, R.M., da Silva Filipe, A., Shepherd, J., Pascall, D.J.,  
454 Shah, R., Jesudason, N., Li, K., Jarrett, R., Pacchiarini, N., Bull, M., Geidelberg, L., Siveroni, I., Goodfellow, I.,  
455 Loman, N.J., Pybus, O.G., Robertson, D.L., Thomson, E.C., Rambaut, A., Connor, T.R., 2020. Evaluating the  
456 effects of SARS-CoV-2 Spike mutation D614G on transmissibility and pathogenicity. *Cell* 64–75.  
457 <https://doi.org/10.1016/j.cell.2020.11.020>
- 458 Walensky, R.P., Walke, H.T., Fauci, A.S., 2021. SARS-CoV-2 Variants of Concern in the United States—Challenges  
459 and Opportunities. *JAMA - J. Am. Med. Assoc.* 325, 1037–1038. <https://doi.org/10.1001/jama.2021.2294>
- 460 WEF Network of Wastewater-Based Epidemiology, 2021. Network of Wastewater-Based Epidemiology [WWW  
461 Document]. URL [https://nwbe.org/?page\\_id=20](https://nwbe.org/?page_id=20) (accessed 6.14.21).
- 462 Wolfe, M.K., Archana, A., Catoe, D., Coffman, M.M., Dorevich, S., Graham, K.E., Kim, S., Grijalva, L.M., Roldan-  
463 Hernandez, L., Silverman, A.I., Sinnott-Armstrong, N., Vugia, D.J., Yu, A.T., Zambrana, W., Wigginton, K.R.,  
464 Boehm, A.B., 2021. Scaling of SARS-CoV-2 RNA in Settled Solids from Multiple Wastewater Treatment Plants  
465 to Compare Incidence Rates of Laboratory-Confirmed COVID-19 in Their Sewersheds. *Environ. Sci. Technol.*  
466 *Lett.* <https://doi.org/10.1021/acs.estlett.1c00184>
- 467 Wu, F., Xiao, A., Zhang, J., Moniz, K., Endo, N., Armas, F., Bushman, M., Chai, P.R., Duvallet, C., Erickson, T.B.,  
468 Foppe, K., Ghaeli, N., Gu, X., Hanage, W.P., Huang, K.H., Lee, W.L., Matus, M., McElroy, K.A., Rhode, S.F.,  
469 Wuertz, S., Thompson, J., Alm, E.J., 2021. Wastewater Surveillance of SARS-CoV-2 across 40 U.S. states.  
470 *medRxiv* 1–13. <https://doi.org/10.1101/2021.03.10.21253235>
- 471 Wu, F., Zhang, J., Xiao, A., Gu, X., Lee, W.L., Armas, F., Kauffman, K., Hanage, W., Matus, M., Ghaeli, N., Endo, N.,  
472 Duvallet, C., Poyet, M., Moniz, K., Washburne, A.D., Erickson, T.B., Chai, P.R., Thompson, J., Alm, E.J., 2020.  
473 SARS-CoV-2 titers in wastewater are higher than expected from clinically confirmed cases. *mSystems* 5,  
474 2020.04.05.20051540. <https://doi.org/10.1128/mSystems.00614-20>
- 475