

1 Use of U.S. Blood Donors for National Serosurveillance of SARS-CoV-2 Antibodies: Basis for an  
2 Expanded National Donor Serosurveillance Program.

3  
4 Mars Stone<sup>1,2</sup>, Clara Di Germanio<sup>1</sup>, David J. Wright<sup>3</sup>, Hasan Sulaeman<sup>1</sup>, Honey Dave<sup>1</sup>, Rebecca V.  
5 Fink<sup>3</sup>, Edward P. Notari<sup>4</sup>, Valerie Green<sup>5</sup>, Donna Strauss<sup>6</sup>, Debra Kessler<sup>6</sup>, Mark Destree<sup>7</sup>, Paula Saa<sup>4</sup>,  
6 Phillip C. Williamson<sup>1,5</sup>, Graham Simmons<sup>1,2</sup>, Susan L. Stramer<sup>4</sup>, Jean Opsomer<sup>3</sup>, Jefferson M. Jones<sup>8</sup>,  
7 Steven Kleinman<sup>9</sup>, Michael P. Busch<sup>1,2</sup>; for the NHLBI Recipient Epidemiology and Donor Evaluation  
8 Study-IV-Pediatric (REDS-IV-P)

- 9 1. Vitalant Research Institute (VRI), San Francisco, CA
- 10 2. Department of Laboratory Medicine, University of California, San Francisco, CA
- 11 3. Westat, Rockville, MD
- 12 4. American Red Cross (ARC), Gaithersburg, MD
- 13 5. Creative Testing Solutions (CTS), Tempe, AZ
- 14 6. New York Blood Center (NYBC), New York, NY
- 15 7. BloodWorks Northwest, Seattle, WA
- 16 8. Centers for Disease Control and Prevention COVID-19 Response Team, Atlanta, Georgia
- 17 9. University of British Columbia, Victoria, BC, Canada

18  
19 Corresponding author: Michael P. Busch MD, PhD. Address: Vitalant Research Institute, 270  
20 Masonic Avenue, San Francisco, CA, United States 94118. Phone: 1-415-354-1389. Fax: 1-415-567-  
21 5899. Email: [mbusch@vitalant.org](mailto:mbusch@vitalant.org)

22 Alternate corresponding author: Mars Stone, PhD. Vitalant Research Institute, 270 Masonic Avenue,  
23 San Francisco, CA, United States 94118. Phone: 1-415-354-1389. Fax: 1-415-567-5899. Email:  
24 [mstone@vitalant.org](mailto:mstone@vitalant.org)

25 Keywords: SARS-CoV-2, COVID-19, seroprevalence, COVID-19 Serological Testing

26 Word count: 2965/3000

27 Summary: SARS-CoV-2 serosurveillance data from blood donors in 6 US regions were used  
28 to estimate population weighted seroprevalence. Seroprevalence rates were higher in  
29 younger, non-Hispanic Black, and Hispanic donors and correlated with reported regional  
30 case rates. The study was expanded to a national donor serosurveillance program.

31  
32 Disclaimer: The content is solely the responsibility of the authors and does not represent the policy  
33 of the National Institutes of Health or the Department of Health and Human Services. Any specific  
34 brand names included in this manuscript are for identification purposes only and are not intended  
35 to represent an endorsement by CDC. The findings and conclusions in this report are those of the  
36 authors and do not necessarily represent the official position of the Centers of Disease Control and  
37 Prevention.

38

### 39 **Abstract**

40 **Introduction:** The REDS-IV-P Epidemiology, Surveillance and Preparedness of the Novel  
41 SARS-CoV-2 Epidemic (RESPONSE) seroprevalence study conducted monthly cross-  
42 sectional testing for SARS-CoV-2 antibodies on blood donors in six U.S. metropolitan  
43 regions to estimate the extent of SARS-COV-2 infections over time.

44 **Study Design/Methods** During March-August 2020, approximately  $\geq 1,000$  serum  
45 specimens were collected monthly from each region and tested for SARS-CoV-2 antibodies  
46 using a well-validated algorithm. Regional seroprevalence estimates were weighted based  
47 on demographic differences with the general population. Seroprevalence was compared  
48 with reported COVID-19 case rates over time.

49 **Results/Findings:** For all regions, seroprevalence was  $< 1.0\%$  in March 2020. New York  
50 experienced the biggest increase (peak seroprevalence,  $15.8\%$  in May). All other regions

51 experienced modest increases in seroprevalence (1-2% in May-June to 2-4% in July-  
52 August). Seroprevalence was higher in younger, non-Hispanic Black, and Hispanic donors.  
53 Temporal increases in donor seroprevalence correlated with reported case rates in each  
54 region. In August, 1.3-5.6 estimated cumulative infections (based on seroprevalence data)  
55 per COVID-19 case reported to CDC.

56 **Conclusion:** Increases in seroprevalence were found in all regions, with the largest  
57 increase in New York. Seroprevalence was higher in non-Hispanic Black and Hispanic blood  
58 donors than in non-Hispanic White blood donors. SARS-CoV-2 antibody testing of blood  
59 donor samples can be used to estimate the seroprevalence in the general population by  
60 region and demographic group. The methods derived from the RESPONSE seroprevalence  
61 study served as the basis for expanding SARS-CoV-2 seroprevalence surveillance to all 50  
62 states and Puerto Rico.

### 63 **Introduction**

64 Globally, as of January 2021, SARS-CoV-2 has caused nearly 100 million diagnosed COVID-  
65 19 cases, over two million deaths, and a substantial number of infections that are either  
66 asymptomatic or mildly symptomatic (1-3). With application of sensitive and specific  
67 serological assays and algorithms to representative populations, SARS-CoV-2 serosurveys  
68 are critical for estimating total infection rates, infection fatality rates, extent of herd  
69 immunity, and the effect of epidemic mitigation policies (4). Blood-donor-based  
70 serosurveillance is a powerful and cost-effective strategy that has provided valuable  
71 insights on infection prevalence and incidence for past emerging infectious threats  
72 including West Nile Virus, dengue, chikungunya and Zika (5-10). Choice of assays for  
73 serosurveillance should be determined by intended purpose (11, 12) and assay

74 performance which can be influenced by antigen and immunoglobulin targets, and assay  
75 configuration (13).  
76 In response to the emergence of COVID-19 in the United States in early 2020, the National  
77 Heart, Lung and Blood Institute Recipient Epidemiology and Donor Evaluation Study  
78 (REDS-IV-P) program developed and implemented molecular and serologic surveillance for  
79 SARS-CoV-2 in six metropolitan regions, called the **REDS-IV-P Epidemiology, Surveillance**  
80 **and Preparedness of the Novel SARS-CoV-2 Epidemic (RESPONSE)** study. RESPONSE  
81 project aims included conducting testing for SARS-CoV-2 antibodies to estimate  
82 seroprevalence, to evaluate trends in seroprevalence, and to compare the observed  
83 seroprevalence with reported case data.

## 84 **METHODS**

### 85 *Study Sites and Donation Sampling*

86 The RESPONSE study tested for SARS-CoV-2 antibodies in three early-outbreak regions  
87 starting in March 2020 (Seattle, New York, and San Francisco), and three initially low-  
88 prevalence regions in April 2020 (Boston, Los Angeles, and Minneapolis)(see Table 1 for  
89 donor characteristics and Figure 1 for testing algorithm). About 1000 serum specimens  
90 were randomly selected monthly from allogeneic blood donors from March/April through  
91 August 2020. In July and August, monthly sampling increased to 2000-4000 per region as  
92 the study transitioned into the expanded Multistate Assessment of SARS-CoV-2  
93 Seroprevalence in Blood Donors (MASS-BD) Study (14). Beginning in June 2020, the blood  
94 collection organizations associated with four regions (San Francisco, Los Angeles,  
95 Minneapolis, and Boston) began screening all blood donors for SARS-CoV-2 antibodies.(15)  
96 In July and August in these regions, antibody data were extracted from donation records,  
97 whereas for Seattle and New York, study-initiated testing continued. For all months,

98 donations made specifically to provide COVID-19 convalescent plasma (CCP) were  
99 excluded. The study was reviewed by the UCSF Committee for Human Research and  
100 determined to meet the definition of research as defined in 46.102(l) but did not involve  
101 human subjects based on anonymization of data and routine consent for blood donation  
102 testing that includes use of residual samples for research purposes (as defined in  
103 46.103(e)(1) consistent with applicable federal law and CDC policy (45 C.F.R. part 46; 21  
104 C.F.R. part 56; 42 U.S.C. §241(d), 5 U.S.C. §552a, 44 U.S.C. §3501)). We used the STROBE  
105 cross sectional checklist when writing our report. (16)

106 *Screening and supplemental serology assays and establishing a testing algorithm*

107 Initially, the serology screening and supplemental testing algorithm consisted of screening  
108 all samples with the Ortho VITROS Immunodiagnostic Products Anti-SARS-CoV-2 Total test  
109 (Vitros CoV2T). Reactive samples were confirmed by parallel testing by both a  
110 nucleocapsid (NC)-based Total Ig assay (Roche Elecsys NC Anti-SARS-CoV-2 Total Ig)  
111 (Elecsys CoV2T) and a pseudovirus reporter virus particle neutralization test (RVPN)  
112 (Appendix A). Screened-positive specimens were considered confirmed if reactive by either  
113 Elecsys CoV2T or RVPN. The Vitros CoV2T and Elecsys CoV2T assays were selected based  
114 on their double antigen-sandwich design, which enables durable detection of total Ig and  
115 employed as an orthogonal algorithm to detect antibodies to different SARS-CoV-2 antigens  
116 (S1 and NC, respectively). FDA EUA Instructions for Use (IFU) (17) and other reports have  
117 demonstrated excellent sensitivity of both assays during acute infection and stability of  
118 antibody reactivity on serial samples collected >120 days from COVID-19 symptom onset.  
119 (18-20)

120 *Statistical methods to extrapolate donor seroprevalence to the general population*

121 The geographic distribution and demographic composition of sampled donors varied  
122 monthly. To ensure sample populations represented a consistent geographic area over the  
123 course of the study, donations were restricted to ZIP codes in which at least 80% of donors  
124 resided, referred to in this study as the Donor Catchment Regions (DCRs). Donations from  
125 donors that resided outside of the DCR were excluded. Monthly sample donor  
126 demographics were compared with monthly total donation demographics at each blood  
127 center via Chi-square statistics (without accounting for a multiple comparison adjustment)  
128 to ensure that sampled donations were representative of general donor populations.  
129 To estimate the monthly seroprevalence in the general population based on blood donor  
130 seroprevalence, monthly estimation weights were created that accounted for demographic  
131 difference between the blood donor sample and general population. The 2018 American  
132 Community Survey (ACS) estimates (21) for the age, gender, and race/ethnicity  
133 composition for the DCRs were used to standardize DCR sample totals by raking. In  
134 addition to these estimation weights, monthly sets of 50 pseudo-replicate weights were  
135 created to compute weighted seroprevalence standard errors. Because seroprevalence in  
136 the U.S. population is known to vary by location and time, a stratified (by blood center and  
137 month) logistic regression model was developed to assess the association between  
138 seropositivity and demographic characteristics.  
139 Blood donation DCRs were defined by ZIP codes, but case reporting by state and local  
140 health departments to CDC is reported by county. Therefore, to compare the number of  
141 cumulative infections estimated from seroprevalence with the number of cumulative cases  
142 reported to CDC by each region, we created county-based DCRs. The number of total  
143 cumulative infections in a DCR was estimated by multiplying the weighted seroprevalence  
144 by the total population in the DCR. (See Supplemental Figure 1 and Appendix B for detailed

145 statistical methods). For each county-based DCR, the number of cumulative infections  
146 based on seroprevalence was divided by the number of reported cases.

147

## 148 **RESULTS**

### 149 *Validation of supplemental testing algorithm*

150 During March-June 2020, a total of 21,485 donations were screened with Vitros CoV2T, of  
151 which 489 reactive specimens were tested in parallel by the Elecsys CoV2T and RVPN  
152 (**Figure 1a**). Specimens were stratified based on Vitros CoV2T signal to cutoff (S/CO)  
153 ratios: specimens with S/CO 1-10 and specimens with S/CO  $\geq 10$ . Parallel testing of all  
154 screened reactive specimens demonstrated that among the 404 specimens with Vitros  
155 CoV2T S/CO  $\geq 10.0$  and available Elecsys CoV2T results, 384 were Elecsys CoV2T reactive  
156 and 19 reactive by RVPN, thus >99% of specimens with Vitros CoV2T S/CO  $\geq 10$  were  
157 confirmed reactive by either Elecsys CoV2T or RVPN. In contrast, of 79 screened reactive  
158 specimens with Vitros CoV2T S/CO 1-10 and available Elecsys CoV2T results, 29 were  
159 Elecsys CoV2T reactive and 12 were RVPN reactive, only 51% of specimens with S/CO 1-10  
160 were confirmed reactive (**Figure 1a**). Thus, beginning in July we modified the  
161 supplemental testing algorithm to be more cost-effective while maintaining high sensitivity  
162 and specificity for July and August (**Figure 1b**) so that specimens were considered  
163 “confirmed antibody positive” if: i) they had a S/CO  $\geq 10$  on Vitros CoV2T screening assay  
164 (i.e., no supplemental testing was performed); or ii) if the Vitros CoV2T S/CO was 1–10  
165 and reactive on either the Elecsys CoV2T or RVPN assay. Details and results of application  
166 of this testing algorithm for the entire study interval (March-August) are presented in  
167 Appendix C.

168 *Seroprevalence estimates over time, with and without supplemental testing and population*  
169 *weighting*

170 In total, 499,476 non-COVID-19 convalescent plasma donations were collected in all  
171 participating regions during the study period, of which 50,156 (10%) were included in the  
172 study. Monthly distributions of Vitros CoV2T reactivity, supplemental testing status, and  
173 number of tested specimens are shown in **Figure 2, Panel A**, and seroprevalence by month  
174 and site are presented in Supplemental Table 2. Low rates of unweighted confirmed  
175 seroreactivity (<1%) were observed for all regions at the beginning of the testing period in  
176 March 2020, with variable increases over the 5-6-month serosurveillance period. The  
177 greatest increase in seroprevalence was seen in New York (0.7% to 15.7%) followed by Los  
178 Angeles (0.8% to 4.5%) and Boston (0.9% to 4.2%). Mean Vitros CoV2T signal intensity  
179 increased from a S/CO of 37.8 (range: 1.1-182.4) in March to 308.9 (range: 1.0-1380.0) in  
180 August, demonstrating that both proportions of confirmed seropositive donations and  
181 mean signal intensities increased over time in each region.

182 In **Figure 2, Panel B**, the screening and confirmed seroprevalence data are presented over  
183 time for each DCR. A high proportion of screen-reactive donations confirmed, particularly  
184 in later months as seroprevalence increased; in July and August, 81-96% of specimens that  
185 screened reactive for anti-S antibodies by Vitros CoV2T were also reactive for anti-NC  
186 antibodies by Elecsys CoV2T.

187 Median weighted confirmed seroprevalence was 1.3 times higher than unweighted  
188 confirmed seroprevalences (IQR 1.02-1.44).

189 *Demographic, blood group and donation status associations with weighted seroprevalence*  
190 *estimates*



191 The confirmed, weighted seroprevalence estimates by donor demographic subcategories  
192 (sex, age, race/ethnicity), and by blood groups (ABO and Rh) presented in **Table 2** were  
193 restricted to August as the most recent findings in this study. For New York, Los Angeles  
194 and Boston, sites with sufficient donations from racial and ethnic minority donors for  
195 meaningful comparison, seroprevalence was higher among younger age groups and among  
196 non-Hispanic Blacks and Hispanics than non-hispanic Whites. In New York in August, the  
197 seroprevalence among Hispanics was 28.6%, among non-Hispanic Blacks was 16.0% and  
198 among non-Hispanic Whites was 8.4%.

199 In a logistic regression model that included results from all regions and months,  
200 seroprevalence was associated with younger age ( $p < 0.0001$ ): compared to persons aged  
201 50-64 years, persons aged 16-29 years had 1.31 (CI 1.1-1.6) times the odds of being  
202 seropositive. Both non-Hispanic Blacks (Odds ratio [OR] 2.2, 95% confidence interval [CI]  
203 1.6-2.9) and Hispanics (OR 2.6, CI 2.2-3.1) had greater odds of being seropositive than non-  
204 Hispanic Whites (**Table 3**). Gender and blood types were not significantly associated with  
205 seroprevalence. First-time donors had increased seroprevalence compared to repeat  
206 donors (OR 2.2, CI: 1.6-3.2)). In the four regions where donors in July and August were  
207 universally tested for SARS-CoV-2 antibodies, first-time donors had 2.2 (CI 1.8-2.6) times  
208 the odds of being seropositive compared to repeat donors. In the two regions where blood  
209 donors were not being offered antibody testing, first time donors had only 1.2 (CI 1.0-1.5)  
210 times the odds of repeat donors.

211 *Comparison of monthly seroprevalence (as calculated from donor serosurveillance) with*  
212 *reported COVID-19 case rates*

213 For each region, the monthly confirmed, weighted seroprevalence was juxtaposed with the  
214 weekly and cumulative COVID-19 case counts. Seroprevalence and cumulative COVID-19

215 case rates increased in all regions from March/April through August (**Figure 3**). New York  
216 reported the highest seroprevalence, increasing from 0.7% in March to 13.2% in April,  
217 corresponding with the sharp rise in reported New York COVID-19 cases. Coincident with a  
218 decrease in daily reported cases from May through July, the seroprevalence in New York  
219 stabilized at ~15-16% during this time, with smaller increases in other regions. The  
220 cumulative case incidence for Boston and Los Angeles in July was similar to the cumulative  
221 case incidence for New York in April (~2,000 cumulative reported cases per 100,000  
222 population), but seroprevalence for Boston and Los Angeles remained substantially lower  
223 than New York.

224 The number of estimated cumulative infections, based on the adjusted donor  
225 seroprevalence and population sizes, was larger than the number of cumulative reported  
226 infections for all regions (**Table 4**). However, the ratio varied by region and over time. For  
227 all cities except New York, much higher numbers of estimated infections per reported case  
228 occurred in the first month of blood donor screening compared with later months. The  
229 highest reported ratio of estimated infections to reported cases occurred in Minneapolis in  
230 April (42 infections per reported case). By August 2020, all regions other than New York  
231 had 1.6-3.2 estimated infections per reported case. During May through August, New York  
232 had the highest number of estimated infections per reported case (5.3-6.4 infections per  
233 reported case).

## 234 **DISCUSSION**

235 Use of blood donor populations with broad national representativeness provides a  
236 surveillance tool to monitor seroprevalence and to impute infection rates within  
237 communities, track outbreaks, and potentially correlate evolving infection rates with  
238 pandemic mitigation measures.

239 Critical to the success of serosurveillance programs is the choice of SARS-CoV-2 antibody  
240 assays and development and validation of supplemental testing algorithms. Antibody  
241 persistence or waning has been shown to be assay-dependent (22), so it is essential to  
242 select assays demonstrating durable antibody reactivity to accurately estimate cumulative  
243 incidence based on serial cross-sectional seroprevalence data. Also important is the assay's  
244 ability to sensitively detect antibodies following asymptomatic and mildly symptomatic  
245 infections, which may produce weak systemic antibody responses (23).

246 The Vitros CoV2T and Elecsys CoV2T assays employed in this study satisfy many of these  
247 criteria for serosurveillance assays: They have stable S/CO values over at least 4-5 months  
248 following seroconversion (20, 24) and have wide dynamic ranges, enabling implementation  
249 of a screening assay S/CO threshold-based supplementary testing algorithm. By  
250 demonstrating that >99% of specimens screened with Vitros CoV2T that had  $S/CO \geq 10$   
251 were also reactive by the Elecsys CoV2T or RVPN, we were able to adopt a robust and  
252 lower-cost testing algorithm, limiting supplemental testing to screened specimens with  
253 S/CO 1-10. This algorithm is now being employed by CDC's nationwide seroprevalence  
254 blood donor study. To differentiate natural-infection-induced and vaccine-induced  
255 seropositivity, the nationwide study is testing all anti-S-reactive specimens with an NC-  
256 based assay beginning in January 2021 (25).

257 Higher seroprevalence was observed in non-Hispanic Blacks and Hispanics than in non-  
258 Hispanic Whites in most regions but was particularly notable in New York. These racial  
259 seroprevalence disparities are consistent with other reports (15, 26), potentially because  
260 racial and ethnic minority groups experience inequities in access to health care, quality  
261 housing, ability to work from home, and reliable transportation (27). Increased risk for  
262 infection has been associated with younger age, possibly related to lack of adherence to

263 mitigation measures (15, 28). Future analyses will include comparing region-, age-, and  
264 race/ethnicity-specific seroprevalence rates to the number of demographic group-specific  
265 cumulative reported cases.

266 In this study, seroprevalence trends were consistent with the pattern of cumulative  
267 reported COVID-19 cases. For most regions, the ratio of estimated infections to reported  
268 cases was higher during March-April 2020 than in subsequent months. This suggests that  
269 underreporting of COVID-19 cases to CDC was more severe during the earliest months of  
270 the pandemic. Lack of available testing and avoiding medical care to obtain testing because  
271 of COVID-19-related concerns might also have contributed (29). From May through August,  
272 the calculated seroprevalence predicted 1.6-3.2 SARS-CoV-2 infections per cumulative case  
273 reported to CDC for all regions except New York, which predicted 5.3-6.4 infections per  
274 reported case.

275 Compared to the other large seroprevalence survey conducted by CDC using commercial  
276 lab specimens, this study generally showed lower seroprevalence estimates (30). A  
277 national seroprevalence study of dialysis patients with blood specimens collected during  
278 July 2020 also reported generally higher seroprevalence estimates (31). Differences in the  
279 geographic distribution of participants, serology assays used, and assumptions made when  
280 extrapolating seroprevalence estimates to the general population may explain these  
281 differences. Several local seroprevalence studies conducted in regions similar to the six  
282 regions in this study have calculated similar or higher seroprevalence estimates (32-34).  
283 However, many of these collected specimens were from healthcare workers or hospitalized  
284 patients, who may be at higher risk of SARS-CoV-2 infection.

285 This study could have underestimated seroprevalence for several reasons. First, blood  
286 donors may represent a population less likely to be exposed to SARS-CoV-2 than the

287 general population (35). Also, blood donors tend to be in better health than the general  
288 population and recruitment practices and eligibility criteria for blood donations may bias  
289 the donor sample toward lower-risk individuals; this may explain the lower rates of  
290 antibody positivity in repeat donors (who provide >80% of donations) compared to first  
291 time donors. Secondly, many higher-risk populations cannot or do not donate, including  
292 persons who are acutely febrile or ill, children aged <16 years, and institutionalized  
293 persons such as those residing in nursing homes or prison. Third, compared to the general  
294 population, relatively few ethnic and racial minorities donate, and these groups are at  
295 increased risk for SARS-CoV-2 infection; this bias is partially compensated for because our  
296 results were adjusted by weighting for race/ethnicity. Fourth, there is growing evidence  
297 that approximately 5-10% of infected persons do not seroconvert (23). We did not adjust  
298 our results to account for such “serosilent” infections.

299 Our results may overestimate seroprevalence because of implementation of SARS-CoV-2  
300 antibody screening of all blood donations by some blood collection organizations in the  
301 summer of 2020. These blood centers publicly advertised availability of this screening  
302 which could have led to test seeking by prospective donors with increased concern over  
303 exposure to the virus. However, our analysis of relative seroprevalence before and after  
304 implementation of such “universal screening” in first time donors, who give 15-20% of  
305 total donations, indicates that although the odds ratio was greater for first-time donors, the  
306 impact of such test seeking was small relative to the expanding pandemic. Finally, there  
307 was no formal process for randomization, however no bias was seen in comparison of  
308 monthly samples with monthly donations (Supplemental Table 1).

309 Building on the approach developed in the RESPONSE seroprevalence study, in July 2020

310 the U.S. CDC funded a nationwide blood donor seroprevalence program that expanded this  
311 surveillance program from six regions for 6 months to >60 U.S. regions with monthly  
312 collections of 2,000-6,000 samples per region from July 2020 to December 2021  
313 (Supplemental Figure 2). Similar to RESPONSE, changes in overall, geographic region-, age-,  
314 sex-, and race/ethnicity-specific SARS-CoV-2 seroprevalence will be calculated monthly  
315 over the course of the study and compared with clinical cases, deaths, and community  
316 serosurvey data.

317 In conclusion, serial serosurveillance studies of SARS-CoV-2 using blood donor populations,  
318 which are now being implemented in many countries (36), provide a powerful adjunct to  
319 standard public health case reporting. Although serosurveillance data from asymptomatic  
320 blood donors may lag behind viral transmission and case reporting by up to several weeks,  
321 if appropriately designed, executed, analyzed, and interpreted, these studies will provide  
322 urgently needed data to inform our understanding of the epidemiology and effectiveness of  
323 responses to this unprecedented pandemic.

324

325

326

327 Acknowledgments

328 The NHLBI REDS Epidemiology, Surveillance and Preparedness of the Novel SARS-CoV-2  
329 (RESPONSE) study is the responsibility of the following persons: Vitalant Research Institute M.P.  
330 Busch, P.J. Norris, and M. Stone, Vitalant Research Institute, San Francisco, CA, Data coordinating  
331 center; S.M. Mathew, Westat, Rockville, MD; Blood Collection Organizations: S. Stramer, American  
332 Red Cross (ARC), Gaithersburg, MD, D. Kessler, New York Blood Center (NYBC), New York, NY, B.A.  
333 Konkle, Blood Works Northwest, Seattle, WA, B. Custer, Vitalant Research Institute, San Francisco,

334 CA; Publications Committee Chairman: P.M. Ness, Johns Hopkins University, Baltimore, MD;  
335 Steering Committee Chairpersons: S.H. Kleinman, University of British Columbia, Victoria, BC,  
336 Canada, C.D. Josephson, Emory University, Atlanta, GA, National Heart, Lung, and Blood Institute,  
337 National Institutes of Health, S.A. Glynn and K. Malkin.  
338  
339 The authors thank C. Casseti, National Institute of Allergies and Infectious Diseases (NIAID) and J.  
340 Jones, S. Gerber, M. Patton, F. Havers and S. Basavaraju of the Centers for Disease Control and  
341 Prevention (CDC) for their technical support, as well as A.E. Williams and S. Anderson of the U.S.  
342 Food and Drug Administration (FDA), J. Haynes from ARC for their contribution of data from the  
343 Transfusion-Transmissible Infections Monitoring System (TTIMS) and L. McCain, A. Hui, C. Samuels,  
344 H. Tanner and Z. Kaidarova of Vitalant Research Institute for their technical assistance.  
345  
346 **Funding source:** The authors were supported by research contracts from the National Heart, Lung,  
347 and Blood Institute (NHLBI Contracts HHSN 75N92019D00032 and HHSN 75N92019D00033) as  
348 well as with funding support from the National Institute of Allergies and Infectious Diseases  
349 (NIAID), NIH.

## 350 **References**

- 351 1. European Centre for Disease Prevention and Control: COVID-19 situation update  
352 worldwide, as of 14 July 2020 2020. Available from:  
353 <https://www.ecdc.europa.eu/en/geographical-distribution-2019-ncov-cases>.
- 354 2. Long QX, Tang XJ, Shi QL, Li Q, Deng HJ, Yuan J, Hu JL, Xu W, Zhang Y, Lv FJ, Su K, Zhang  
355 F, Gong J, Wu B, Liu XM, Li JJ, Qiu JF, Chen J, Huang AL. Clinical and immunological assessment  
356 of asymptomatic SARS-CoV-2 infections. *Nature medicine*. 2020. Epub 2020/06/20. doi:  
357 10.1038/s41591-020-0965-6. PubMed PMID: 32555424.
- 358 3. Rothe C SM, Sothmann P, Bretzel G, Froeschl G, Wallrauch C, Zimmer T, Thiel V, Janke C,  
359 Guggemos W, Seilmaier M, Drosten C, Vollmar P, Zwirgmaier K, Zange S, Wolfel R, Hoelscher  
360 M. Transmission of 2019-nCoV Infection from an Asymptomatic Contact in Germany. *The New  
361 England journal of medicine*. 2020;382(20):970-2. Epub 2020/02/01.
- 362 4. Cohn J. Unprecedented nationwide blood studies seek to track U.S. coronavirus spread.  
363 *Science*. 2020. doi: doi:10.1126/science.abc1319.
- 364 5. Williamson PC, Linnen JM, Kessler DA, Shaz BH, Kamel H, Vassallo RR, Winkelman V, Gao  
365 K, Ziermann R, Menezes J. First cases of Zika virus–infected US blood donors outside states with  
366 areas of active transmission. *Transfusion*. 2017;57(3pt2):770-8.
- 367 6. Stone M, Bakkour S, Lanteri MC, Brambilla D, Simmons G, Bruhn R, Kaidarova Z, Lee T-H,  
368 Orlando Alsina J, Williamson PC, Galel SA, Pate LL, Linnen JM, Kleinman S, Busch MP. Zika virus  
369 RNA and IgM persistence in blood compartments and body fluids: a prospective observational  
370 study. *The Lancet infectious diseases*. 2020;20(12):1446-56. doi: 10.1016/s1473-  
371 3099(19)30708-x.
- 372 7. Busch MP, Sabino EC, Brambilla D, Lopes ME, Capuani L, Chowdhury D, McClure C,  
373 Linnen JM, Prince H, Simmons G, Lee TH, Kleinman S, Custer B, International Component of the  
374 NRE, Donor Evaluation S, III. Duration of Dengue Viremia in Blood Donors and Relationships  
375 Between Donor Viremia, Infection Incidence and Clinical Case Reports During a Large Epidemic.  
376 *The Journal of infectious diseases*. 2016;214(1):49-54. doi: 10.1093/infdis/jiw122. PubMed  
377 PMID: 27302934; PMCID: PMC4907419.
- 378 8. Lanteri MC, Lee TH, Wen L, Kaidarova Z, Bravo MD, Kiely NE, Kamel HT, Tobler LH, Norris  
379 PJ, Busch MP. West Nile virus nucleic acid persistence in whole blood months after clearance in  
380 plasma: implication for transfusion and transplantation safety. *Transfusion*. 2014;54(12):3232-  
381 41. doi: 10.1111/trf.12764. PubMed PMID: 24965017; PMCID: PMC4268370.
- 382 9. Simmons G, Bres V, Lu K, Liss NM, Brambilla DJ, Ryff KR, Bruhn R, Velez E, Ocampo D,  
383 Linnen JM, Latoni G, Petersen LR, Williamson PC, Busch MP. High Incidence of Chikungunya  
384 Virus and Frequency of Viremic Blood Donations during Epidemic, Puerto Rico, USA, 2014.  
385 *Emerg Infect Dis*. 2016;22(7):1221-8. doi: 10.3201/eid2207.160116. PubMed PMID: 27070192;  
386 PMCID: PMC4918147.
- 387 10. Saa P, Proctor M, Foster G, Krysztof D, Winton C, Linnen JM, Gao K, Brodsky JP,  
388 Limberger RJ, Dodd RY, Stramer SL. Investigational Testing for Zika Virus among U.S. Blood  
389 Donors. *The New England journal of medicine*. 2018;378(19):1778-88. doi:  
390 10.1056/NEJMoa1714977. PubMed PMID: 29742375.
- 391 11. Sethuraman N, Jeremiah SS, Ryo A. Interpreting Diagnostic Tests for SARS-CoV-2. *JAMA*.  
392 2020;323(22):2249-51. doi: 10.1001/jama.2020.8259.



- 393 12. Guo L, Ren L, Yang S, Xiao M, Chang, Yang F, Dela Cruz CS, Wang Y, Wu C, Xiao Y, Zhang  
394 L, Han L, Dang S, Xu Y, Yang Q, Xu S, Zhu H, Xu Y, Jin Q, Sharma L, Wang L, Wang J. Profiling Early  
395 Humoral Response to Diagnose Novel Coronavirus Disease (COVID-19). *Clin Infect Dis*. 2020.  
396 Epub 2020/03/22. doi: 10.1093/cid/cia310. PubMed PMID: 32198501.
- 397 13. Che XY QL, Liao ZY, Wang YD, Wen K, Pan YX, Hao W, Mei YB, Cheng VC, Yuen KY.  
398 Antigenic cross-reactivity between severe acute respiratory syndrome-associated coronavirus  
399 and human coronaviruses 229E and OC43. *The Journal of infectious diseases*.  
400 2020;191(12):2033-7.
- 401 14. Centers for Disease Control and Prevention. Multistate Assessment of SARS-CoV-2  
402 Seroprevalence in Blood Donors [https://www.cdc.gov/coronavirus/2019-ncov/cases-](https://www.cdc.gov/coronavirus/2019-ncov/cases-updates/blood-bank-serosurvey.html2020)  
403 [updates/blood-bank-serosurvey.html2020](https://www.cdc.gov/coronavirus/2019-ncov/cases-updates/blood-bank-serosurvey.html2020) [updated Nov. 13, 2020].
- 404 15. Dodd R, Xu M, Stramer SL. Change in Donor Characteristics and Antibodies to SARS-CoV-  
405 2 in Donated Blood in the US, June-August. *JAMA*. 2020. Epub Published online September 14,  
406 2020.
- 407 16. von Elm E, Altman DG, Egger M, Pocock SJ, Gøtzsche PC, Vandenbroucke JP. The  
408 Strengthening the Reporting of Observational Studies in Epidemiology (STROBE) statement:  
409 guidelines for reporting observational studies. *J Clin Epidemiol*. 2008;61(4):344-9. Epub  
410 2008/03/04. doi: 10.1016/j.jclinepi.2007.11.008. PubMed PMID: 18313558.
- 411 17. U.S. Food & Drug Administration. EUA Authorized Serology Test Performance 2020  
412 [February 9, 2021]. Available from: [https://www.fda.gov/medical-devices/coronavirus-disease-](https://www.fda.gov/medical-devices/coronavirus-disease-2019-covid-19-emergency-use-authorizations-medical-devices/eua-authorized-serology-test-performance)  
413 [2019-covid-19-emergency-use-authorizations-medical-devices/eua-authorized-serology-test-](https://www.fda.gov/medical-devices/coronavirus-disease-2019-covid-19-emergency-use-authorizations-medical-devices/eua-authorized-serology-test-performance)  
414 [performance](https://www.fda.gov/medical-devices/coronavirus-disease-2019-covid-19-emergency-use-authorizations-medical-devices/eua-authorized-serology-test-performance).
- 415 18. Zilla M, Wheeler BJ, Keetch C, Mitchell G, McBreen J, Wells A, Shurin MR, Peck-Palmer  
416 O, Wheeler SE. Variable Performance in 6 Commercial SARS-CoV-2 Antibody Assays May Affect  
417 Convalescent Plasma and Seroprevalence Screening. *Am J Clin Pathol*. 2020. Epub 2020/11/07.  
418 doi: 10.1093/ajcp/aqaa228. PubMed PMID: 33155015.
- 419 19. Grandjean L, Saso A, Ortiz A, Lam T, Hatcher J, Thistlethwaite R, Harris M, Best T,  
420 Johnson M, Wagstaffe H, Ralph E, Mai A, Colijn C, Breuer J, Buckland M, Gilmour K, Goldblatt D.  
421 Humoral Response Dynamics Following Infection with SARS-CoV-2. *medRxiv*.  
422 2020:2020.07.16.20155663. doi: 10.1101/2020.07.16.20155663.
- 423 20. Clara Di Germanio CD, Simmons G, Kelly K, Martinelli R, Darst O, Azimpouran M, Stone  
424 M, Hazegh K, Grebe E, Zhang S, Ma P, Orzechowski M, Livny J, Hung DT, Vassallo RR, Busch MP,  
425 Dumont LJ. SARS-CoV-2 Antibody persistence in COVID-19 convalescent plasma donors.  
426 *medRxiv preprint*. 2021. Epub March 26, 2021. doi: 10.1101/2021.03.24.21254260.
- 427 21. American Community Survey (ACS) [https://www.census.gov/programs-](https://www.census.gov/programs-surveys/acs2018)  
428 [surveys/acs2018](https://www.census.gov/programs-surveys/acs2018).
- 429 22. Buss LF, Prete CA, Abraham CMM, Mendrone A, Salomon T, de Almeida-Neto C, França  
430 RFO, Belotti MC, Carvalho MPSS, Costa AG, Crispim MAE, Ferreira SC, Fraiji NA, Gurzenda S,  
431 Whittaker C, Kamaura LT, Takecian PL, da Silva Peixoto P, Oikawa MK, Nishiya AS, Rocha V,  
432 Salles NA, de Souza Santos AA, da Silva MA, Custer B, Parag KV, Barral-Netto M, Kraemer MUG,  
433 Pereira RHM, Pybus OG, Busch MP, Castro MC, Dye C, Nascimento VH, Faria NR, Sabino EC.  
434 Three-quarters attack rate of SARS-CoV-2 in the Brazilian Amazon during a largely unmitigated  
435 epidemic. *Science*. 2021;371(6526):288-92. doi: 10.1126/science.abe9728.
- 436 23. Petersen LR, Sami S, Vuong N, Pathela P, Weiss D, Morgenthau BM, Henseler RA,  
437 Daskalakis DC, Atas J, Patel A, Lukacs S, Mackey L, Grohskopf LA, Thornburg N, Akinbami LJ. Lack

- 438 of antibodies to SARS-CoV-2 in a large cohort of previously infected persons. *Clinical Infectious*  
439 *Diseases*. 2020. doi: 10.1093/cid/ciaa1685.
- 440 24. Peluso MJ, Takahashi S, Hakim J, Kelly JD, Torres L, Iyer NS, Turcios K, Janson O, Munter  
441 SE, Thanh C, Nixon CC, Hoh R, Tai V, Fehrman E, Hernandez Y, Spinelli MA, Gandhi M, Palafox  
442 M-A, Vallari A, Rodgers MA, Prostko J, Hackett J, Trinh L, Wrin T, Petropoulos CJ, Chiu CY, Norris  
443 PJ, DiGermanio C, Stone M, Busch MP, Elledge SK, Zhou XX, Wells JA, Shu A, Kurtz TW, Pak JE,  
444 Wu W, Burbelo PD, Cohen JI, Rutishauser RL, Martin JN, Deeks SG, Henrich TJ, Rodriguez-  
445 Barraquer I, Greenhouse B. SARS-CoV-2 antibody magnitude and detectability are driven by  
446 disease severity, timing, and assay. *medRxiv*. 2021:2021.03.03.21251639. doi:  
447 10.1101/2021.03.03.21251639.
- 448 25. Moore JP, Offit PA. SARS-CoV-2 Vaccines and the Growing Threat of Viral Variants.  
449 *JAMA*. 2021. doi: 10.1001/jama.2021.1114.
- 450 26. Mackey K, Ayers CK, Kondo KK, Saha S, Advani SM, Young S, Spencer H, Rusek M,  
451 Anderson J, Veazie S, Smith M, Kansagara D. Racial and Ethnic Disparities in COVID-19-Related  
452 Infections, Hospitalizations, and Deaths : A Systematic Review. *Ann Intern Med*. 2020. Epub  
453 2020/12/01. doi: 10.7326/M20-6306. PubMed PMID: 33253040; PMCID: PMC7772883.
- 454 27. Centers for Disease Control and Prevention. COVID-19 Racial and Ethnic Health  
455 Disparities 2020; December 10: [
- 456 28. Centers for Disease Control and Prevention. COVID-19 Mitigation Behaviors by Age  
457 Group — United States, April–June 2020. *Morbidity and Mortality Weekly Report (MMWR)*.  
458 2020;69(43):1584-90. Epub October 30, 2020
- 459 29. Czeisler MÉ, Marynak K, Clarke KEN, Salah Z, Shakya I, Thierry JM, Ali N, McMillan H,  
460 Wiley JF, Weaver MD, Czeisler CA, Rajaratnam SMW, Howard ME. Delay or Avoidance of  
461 Medical Care Because of COVID-19–Related Concerns -United States, June 2020. *MMWR*  
462 *Recommendations and reports : Morbidity and mortality weekly report Recommendations and*  
463 *reports / Centers for Disease Control*. 2020;63(36):1250-7.
- 464 30. Centers for Disease Control and Prevention: Commercial laboratory seroprevalence  
465 survey data [https://www.cdc.gov/coronavirus/2019-ncov/cases-updates/commercial-lab-](https://www.cdc.gov/coronavirus/2019-ncov/cases-updates/commercial-lab-surveys.html#surveymap2020)  
466 [surveys.html#surveymap2020](https://www.cdc.gov/coronavirus/2019-ncov/cases-updates/commercial-lab-surveys.html#surveymap2020) [January 12, 2021].
- 467 31. Anand S, Montez-Rath M, Han J, Bozeman J, Kerschmann R, Beyer P, Parsonnet J,  
468 Chertow GM. Prevalence of SARS-CoV-2 antibodies in a large nationwide sample of patients on  
469 dialysis in the USA: a cross-sectional study. *The Lancet*. 2020;396(10259):1335-44. doi:  
470 10.1016/S0140-6736(20)32009-2.
- 471 32. Mansour M, Leven E, Muellers K, Stone K, Mendu DR, Wajnberg A. Prevalence of SARS-  
472 CoV-2 Antibodies Among Healthcare Workers at a Tertiary Academic Hospital in New York City.  
473 *J Gen Intern Med*. 2020;35(8):2485-6. Epub 2020/06/05. doi: 10.1007/s11606-020-05926-8.  
474 PubMed PMID: 32495088; PMCID: PMC7269421.
- 475 33. Morcuende M, Guglielminotti J, Landau R. Anesthesiologists' and Intensive Care  
476 Providers' Exposure to COVID-19 Infection in a New York City Academic Center: A Prospective  
477 Cohort Study Assessing Symptoms and COVID-19 Antibody Testing. *Anesth Analg*.  
478 2020;131(3):669-76. Epub 2020/06/11. doi: 10.1213/ANE.0000000000005056. PubMed PMID:  
479 32520728; PMCID: PMC7302070.
- 480 34. Stadlbauer D, Tan J, Jiang K, Hernandez MM, Fabre S, Amanat F, Teo C, Arunkumar GA,  
481 McMahan M, Jhang J, Nowak MD, Simon V, Sordillo EM, Bakel Hv, Krammer F. Seroconversion

482 of a city: Longitudinal monitoring of SARS-CoV-2 seroprevalence in New York City. medRxiv.  
483 2020:2020.06.28.20142190. doi: 10.1101/2020.06.28.20142190.  
484 35. Havers FP, Reed C, Lim T, Montgomery JM, Klena JD, Hall AJ, Fry AM, Cannon DL, Chiang  
485 C-F, Gibbons A, Krapivnaya I, Morales-Betoulle M, Roguski K, Rasheed MAU, Freeman B, Lester  
486 S, Mills L, Carroll DS, Owen SM, Johnson JA, Semenova V, Blackmore C, Blog D, Chai SJ, Dunn A,  
487 Hand J, Jain S, Lindquist S, Lynfield R, Pritchard S, Sokol T, Sosa L, Turabelidze G, Watkins SM,  
488 Wiesman J, Williams RW, Yendell S, Schiffer J, Thornburg NJ. Seroprevalence of Antibodies to  
489 SARS-CoV-2 in 10 Sites in the United States, March 23-May 12, 2020. JAMA Internal Medicine.  
490 2020;180(12):1576-86. doi: 10.1001/jamainternmed.2020.4130.  
491 36. Erikstrup C, Hother CE, Pedersen OBV, Mølbak K, Skov RL, Holm DK, Sækmose SG,  
492 Nilsson AC, Brooks PT, Boldsen JK, Mikkelsen C, Gybel-Brask M, Sørensen E, Dinh KM, Mikkelsen  
493 S, Møller BK, Haunstrup T, Harritshøj L, Jensen BA, Hjalgrim H, Lillevang ST, Ullum H. Estimation  
494 of SARS-CoV-2 infection fatality rate by real-time antibody screening of blood donors. Clinical  
495 infectious diseases : an official publication of the Infectious Diseases Society of America.  
496 2020:ciaa849. doi: 10.1093/cid/ciaa849. PubMed PMID: 32584966.  
497

## Tables and Figures

	New York		San Francisco		Seattle		Boston		Los Angeles		Minneapolis		All Regions	
	All Donations	Sampled Donations	All Donations	Sampled Donations	All Donations	Sampled Donations	All Donations	Sampled Donations	All Donations	Sampled Donations	All Donations	Sampled Donations	All Donations	Sampled Donations
<i>All</i>	131622	9132	28758	7986	76209	8019	47437	6999	114692	11000	98010	7000	496728	50156
<i>Gender</i>														
Female	46.5	47.5	51.6	50.8	56.7	55.7	53.6	53.8	54.7	54.1	57.5	57.8	53.1	53.1
Male	53.5	52.5	48.4	49.2	43.3	44.3	46.4	46.2	45.3	45.9	42.5	42.2	46.9	46.9
<i>Age</i>														
16-29	18.0	20.5	12.5	11.8	14.4	13.1	13.6	14.4	16.3	16.4	10.8	9.8	14.9	14.7
30-49	30.2	31.2	30.8	32.0	34.2	32.6	28.5	29.1	35.5	36.3	28.2	29.0	31.5	32.1
50-64	38.8	34.5	36.9	36.1	32.2	32.6	40.3	39.2	34.5	34.3	36.1	36.7	36.3	35.4
65+	13.0	13.8	19.8	20.2	19.2	21.7	17.6	17.2	13.7	13.1	24.9	24.5	17.3	17.9
<i>Race/ Ethnicity</i>														
White	78.5	77.3	71.3	71.3	81.2	83.8	92.6	92.7	62.4	60.5	97.0	97.0	79.8	78.6
Black	3.6	3.8	1.4	1.4	0.9	0.7	1.0	1.0	2.1	2.2	0.3	0.3	1.8	1.7
Hispanic	8.9	8.0	8.2	8.4	2.4	2.3	2.0	2.2	19.9	20.8	0.8	0.7	8.1	8.1
Other	8.9	10.9	19.2	18.8	15.6	13.2	4.4	4.1	15.7	16.4	1.9	2.0	10.3	11.6
<i>Blood group</i>														
O	50.9	49.4	48.6	48.2	50.4	52.0	51.2	51.6	50.7	50.6	47.5	47.3	50.0	49.9
A	32.6	33.5	33.7	34.4	35.3	34.9	33.2	33.1	32.8	32.4	37.3	37.0	34.1	34.1
B	12.3	12.5	12.2	12.4	10.3	9.9	11.2	10.7	11.9	12.3	10.6	11.0	11.4	11.6
AB	4.2	4.5	5.5	5.0	4.1	3.1	4.4	4.6	4.6	4.7	4.6	4.6	4.4	4.4
<i>Rh type</i>														
Rh positive	83.3	84.2	83.0	83.5	79.9	79.2	80.7	80.5	84.7	84.5	78.5	77.9	81.9	81.9
Rh negative	16.7	15.8	17.0	16.5	20.1	20.7	19.3	19.4	15.3	15.5	21.4	22.1	18.1	18.0
<i>Donor Status</i>														
First time	14.6	14.8	28.4	18.0	21.1	16.2	22.8	21.8	30.9	27.3	18.0	16.2	21.6	19.5
Repeat	85.4	85.2	71.6	82.0	78.9	83.8	77.2	78.2	69.1	72.7	82.0	83.8	78.4	80.5

**Table 1.** Demographic characteristics of donors that provided specimens included in study and of all donors who donated in each region, six U.S. metropolitan regions, March–August 2020. Rh = rhesus factor.

Variables	Region					
	Seroprevalence (95% CI)					
	New York	San Francisco	Seattle	Los Angeles	Boston	Minneapolis
	15.7 (13.6, 18.0)	1.5 (0.6, 3.1)	1.9 (1.2, 2.9)	4.5 (3.8, 5.3)	4.2 (2.8, 6.0)	1.5 (0.9, 2.3)
<b>Age</b>						
16-29	18.4 (13.9, 23.7)	4.1 (0.7, 12.2)	1.9 (0.4, 5.2)	8.0 (5.9, 10.7)	5.6 (2.5, 10.3)	2.1 (0.5, 5.7)
30-49	17.4 (13.7, 21.6)	0.8 (0.2, 2.2)	1.7 (0.6, 3.9)	4.8 (3.4, 6.6)	3.4 (1.1, 7.7)	1.7 (0.7, 3.6)
50-64	14.9 (10.8, 19.8)	0.5 (0.1, 1.6)	2.5 (1.0, 5.2)	2.4 (1.4, 3.8)	5.1 (3.2, 7.8)	1.2 (0.4, 2.5)
65+	10.2 (5.3, 17.3)	0.9 (0.1, 3.3)	1.2 (0.3, 3.3)	1.2 (0.4, 2.8)	2.6 (1.2, 5.1)	0.6 (0.1, 2.1)
<b>Gender</b>						
Female	16.8 (13.8, 20.2)	1.9 (0.4, 5.5)	2.0 (1.1, 3.6)	5.6 (4.4, 7.0)	4.2 (2.2, 7.2)	0.9 (0.3, 1.8)
Male	14.5 (11.6, 17.8)	1.1 (0.5, 2.1)	1.7 (0.8, 3.2)	3.4 (2.3, 4.7)	4.2 (2.6, 6.4)	2.1 (1.1, 3.6)
<b>Race</b>						
White	8.4 (7.1, 9.8)	1.6 (0.8, 3.0)	2.5 (1.5, 3.9)	2.1 (1.5, 2.8)	2.9 (2.1, 3.8)	1.8 (1.1, 2.8)
Black	16.0 (9.6, 24.4)	0.0 (0.0, 15.8)	0.0 (0.0, 20.0)	3.1 (0.5, 9.2)	16.6 (3.8, 40.5)	0.0 (0.0, 60.0)
Hispanic	28.6 (22.1, 35.8)	2.8 (0.2, 11.3)	0.0 (0.0, 5.8)	6.9 (5.2, 8.9)	8.7 (2.1, 22.3)	0.0 (0.0, 21.4)
Other	13.0 (9.7, 16.9)	0.6 (0.0, 2.7)	0.5 (0.0, 3.3)	3.8 (2.3, 6.0)	5.6 (1.1, 16.0)	0.0 (0.0, 8.8)
<b>Blood Type</b>						
A	12.4 (8.9, 16.7)	2.2 (0.2, 8.7)	1.6 (0.8, 3.1)	3.1 (2.1, 4.4)	4.0 (2.3, 6.5)	1.6 (0.7, 3.1)
AB	23.1 (11.4, 38.9)	3.1 (0.1, 16.7)	2.4 (0.1, 10.4)	4.0 (1.0, 10.3)	5.5 (0.3, 22.7)	2.0 (0.0, 10.8)
B	15.8 (9.2, 24.6)	1.2 (0.1, 4.3)	2.7 (0.3, 9.3)	4.1 (2.2, 6.9)	4.9 (1.6, 11.2)	2.7 (0.4, 8.5)
O	17.1 (13.5, 21.2)	1.0 (0.3, 2.3)	1.8 (0.8, 3.4)	5.4 (4.3, 6.6)	4.0 (2.2, 6.6)	1.0 (0.4, 2.1)
<b>Rh type</b>						
Rh positive	16.1 (13.6, 18.7)	1.6 (0.6, 3.4)	1.9 (1.1, 3.1)	4.9 (4.1, 5.8)	4.4 (2.9, 6.4)	1.3 (0.7, 2.4)
Rh negative	13.4 (8.9, 19.0)	0.9 (0.0, 3.9)	1.7 (0.3, 5.1)	1.6 (0.5, 3.7)	3.1 (0.9, 7.7)	2.1 (0.9, 4.1)

**Table 2.** Weighted confirmed seroprevalence by demographic characteristics, six U.S. metropolitan regions, August 2020.

95% CI = 95% confidence interval; DCR = donor catchment region; Rh +ve = rhesus factor positive; Rh-ve = rhesus factor negative

<i>Characteristic</i>	<i>Odds Ratio (95%CI)</i>	<i>p-value</i>
<i>Gender</i>		0.22
Female	1 (reference)	
Male	0.93 (0.82, 1.05)	
<i>Age</i>		<0.0001
16-29	1.31 (1.11, 1.55)	
30-49	1.12 (0.97, 1.30)	
50-64*	1 (reference)	
65+	0.66 (0.53, 0.83)	
<i>Race/Ethnicity</i>		<0.0001
White	1 (reference)	
Black	2.16 (1.64, 2.85)	
Hispanic	2.57 (2.17, 3.05)	
Other	1.16 (0.96, 1.41)	
<i>Blood Type</i>		0.29
A	1.11 (0.97, 1.26)	
AB	1.21 (0.91, 1.61)	
B	1.00 (0.82, 1.21)	
O	1 (reference)	
<i>Rh type</i>		0.69
Rh negative	1.03 (0.88, 1.22)	
Rh positive	1 (reference)	
<i>Donation Type</i>		<0.0001
First time	2.24 (1.58, 3.16)	
repeat	1 (reference)	

**Table 3.** Factors associated with SARS-CoV-2 seropositivity in blood donors, six U.S. metropolitan regions, March–August 2020. 95% CI = 95% confidence interval. Rh = rhesus factor. \*Reference 50-64 as the age group with highest frequency of donations

<i>Region</i>	<i>Month</i>	<i>Seroprevalence</i>	<i>Estimated number of cumulative infections*</i>	<i>Cumulative reported cases†</i>	<i>Estimated number of infections per reported case‡</i>
		Seroprevalence (95% CI)	No. (95% CI)	No.	Ratio (95% CI)
<i>New York</i>	March	0.71 (0.27–1.82)	129184 (49126 – 331148)	34562	3.7 (1.4–9.6)
	April	13.22 (9.27–18.5)	2405373 (1686672–3366067)	349083	6.9 (4.8–9.6)
	May	4 (12.19–20.14)	2867525 (2217965–3664465)	445202	6.4 (5.0–8.2)
	June	14.97 (11.08–19.93)	2723785 (2016001–3626255)	473521	5.8 (4.3–7.7)
	July	14.45 (10.87–18.96)	2629171 (1977792–3449764)	494591	5.3 (4.0–7.0)
	August	15.73 (13.68–18.03)	2862067 (2489070–3280551)	508746	5.6 (4.9–6.4)
<i>San Francisco</i>	March	0.11 (0.01–0.82)	8513 (773–63462)	624	13.6 (1.2–101.7)
	April	0.15 (0.03–0.76)	11609 (2321–58819)	6035	1.9 (0.4–9.7)
	May	0.44 (0.19–1.01)	34053 (14704–78167)	8980	3.8 (1.6–8.7)
	June	1.13 (0.36–3.49)	87454 (27861–270104)	15829	5.5 (1.8–17.1)
	July	0.91 (0.51–1.62)	70428 (39470–125377)	38667	1.8 (1.0–3.2)
	August	1.48 (0.7–3.11)	114542 (54175–240694)	65403	1.8 (0.8–3.7)
<i>Seattle</i>	March	0.18 (0.04–0.77)	8824 (1961–37751)	262	33.7 (7.5–144.1)
	April	1.01 (0.39–2.6)	49517 (19120–127471)	6410	7.7 (3.0–19.9)
	May	0.97 (0.43–2.16)	47556 (21081–105899)	12618	3.8 (1.7–8.4)
	June	1.75 (0.69–4.34)	85798 (33828–212779)	14973	5.7 (2.3–14.2)
	July	1.4 (0.9–2.17)	68638 (44124–106389)	23920	2.9 (1.8–4.4)
	August	1.87 (1.22–2.87)	91681 (59813–140708)	35170	2.6 (1.7–4.0)
<i>Boston</i>	April	0.86 (0.24–3.06)	54284 (15149–193152)	12677	4.3 (1.2–15.2)
	May	1.37 (0.7–2.67)	86476 (44185–168534)	63678	1.4 (0.7–2.6)
	June	2.3 (1.19–4.41)	145179 (75114–278366)	101040	1.4 (0.7–2.8)
	July	3.78 (2.71–5.25)	238599 (171059–331388)	108209	2.2 (1.6–3.1)



<i>Los Angeles</i>	August	4.21 (2.93–6.02)	265741 (184946–379992)	117279	2.3 (1.6–3.2)
	April	0.79 (0.3–2.04)	147820 (56134–381713)	7303	20.2 (7.7–52.3)
	May	0.68 (0.25–1.82)	127237 (46778–340548)	50077	2.5 (0.9–6.8)
	June	1.61 (0.78–3.3)	301254 (145949–617477)	87888	3.4 (1.7–7.0)
	July	2.39 (1.71–3.32)	447203 (319965–621219)	211358	2.1 (1.5–2.9)
	August	4.5 (3.81–5.3)	842014 (712905–991706)	347083	2.4 (2.1–2.9)
<i>Minneapolis</i>	April	0.67 (0.12–3.74)	36579 (6551–204192)	875	41.8 (7.5–233.4)
	May	0.54 (0.16–1.76)	29482 (8735–96090)	12357	2.4 (0.7–7.8)
	June	0.69 (0.22–2.17)	37671 (12011–118475)	25883	1.5 (0.5–4.6)
	July	1.78 (0.83–3.79)	97182 (45315–206921)	40927	2.4 (1.1–5.1)
	August	1.47 (0.93–2.33)	80257 (50775–127210)	60502	1.3 (0.8–2.1)

**Table 4.** Monthly seroprevalence, estimated number of cumulative infections, cumulative reported COVID-19 cases, and the estimated number of cumulative infections per reported case, six U.S. metropolitan regions, March–August 2020. 95% CI = 95% confidence interval

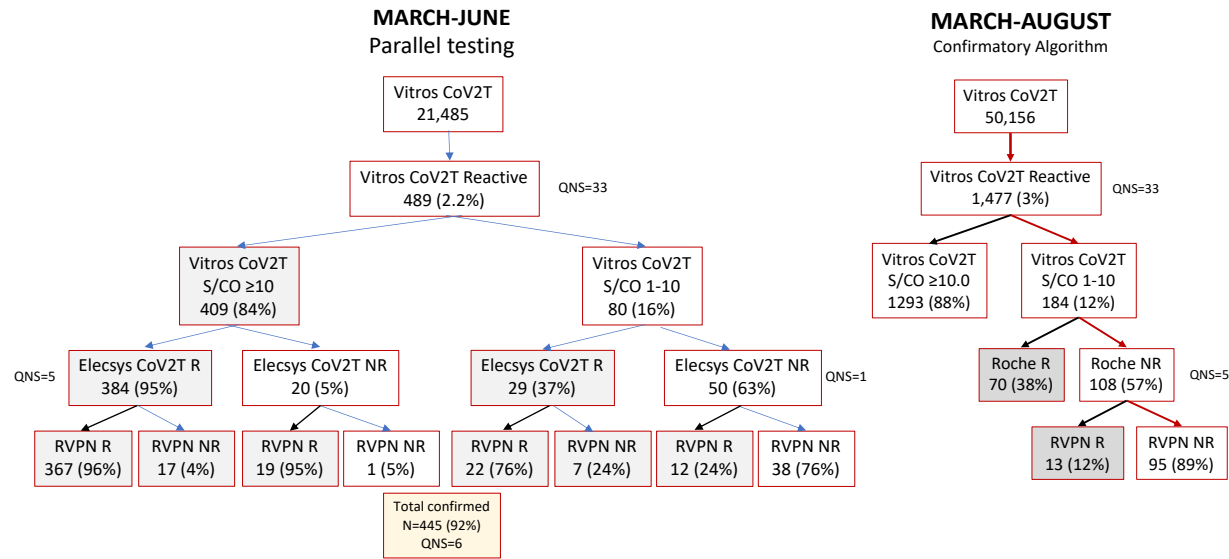
\*Confirmed seroprevalence multiplied by the region population size.

†Number reported to CDC.

‡Number of estimated infections divided by the number of cumulative reported cases.

**Panel A**

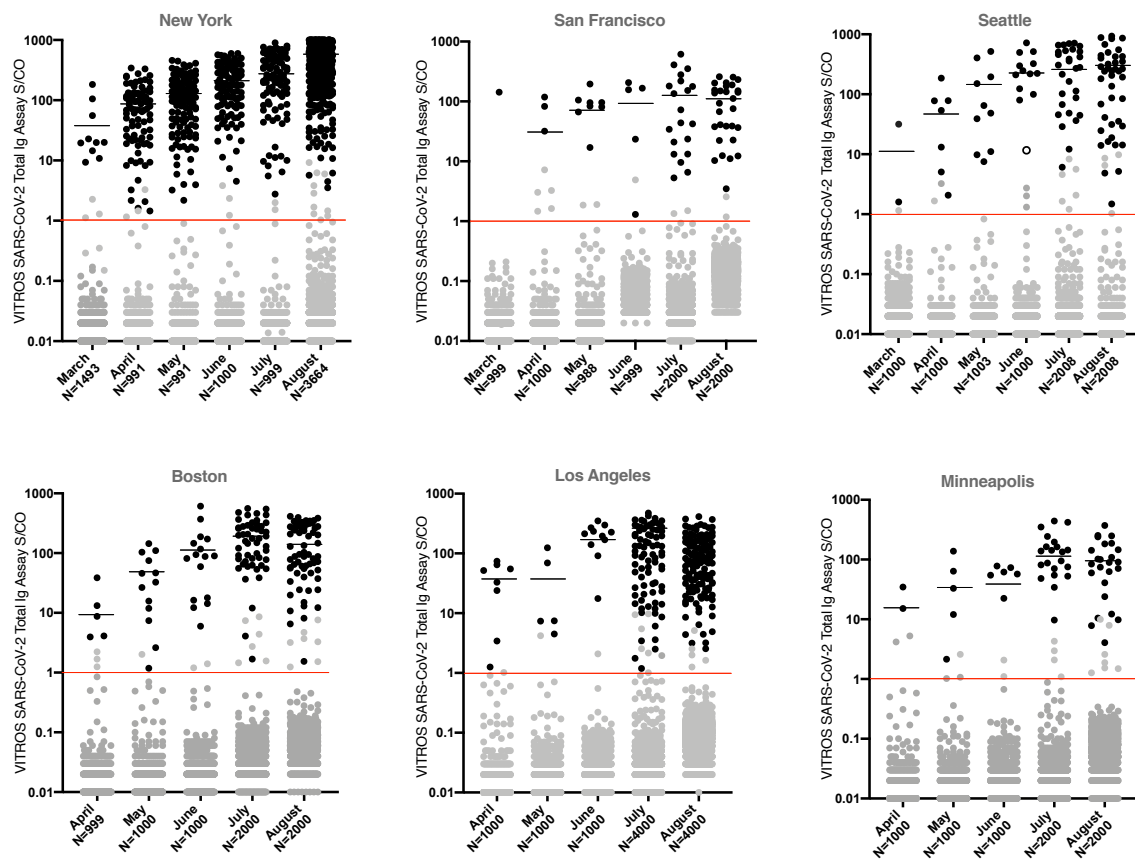
**Panel B**



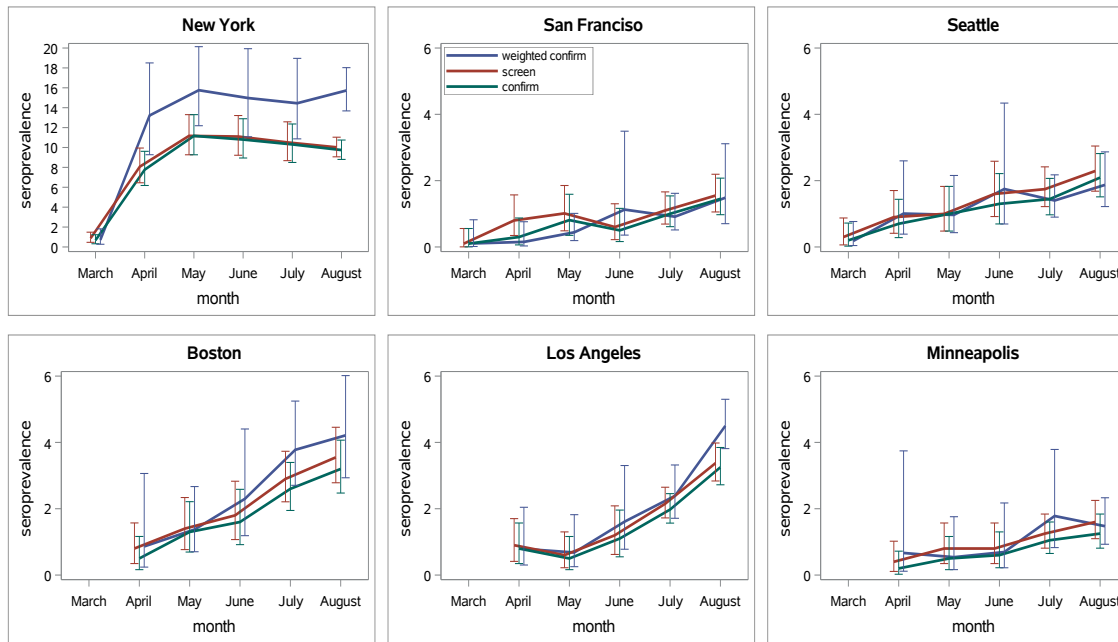
**Figure 1.** SARS-CoV-2 serology testing results flow chart, six U.S. metropolitan regions. Panel A: Parallel testing using Elecsys CoV2T and RVNPT assay on Ortho Vitros S1 Total Ig CoV2T reactive samples collected during March–June 2020. Panel B: Results from March through August 2020 combining the initial and revised supplementary testing algorithms.

Vitros COV2T: Ortho VITROS Immunodiagnostic Products Anti-SARS-CoV-2 Total; QNS: quantity not sufficient; Elecsys CoV2T: Roche Elecsys Nucleocapsid Anti-SARS-CoV-2 Total Immunoglobulin; RVPN: pseudovirus reporter virus particle neutralization; R: reactive; NR: nonreactive.

Panel A

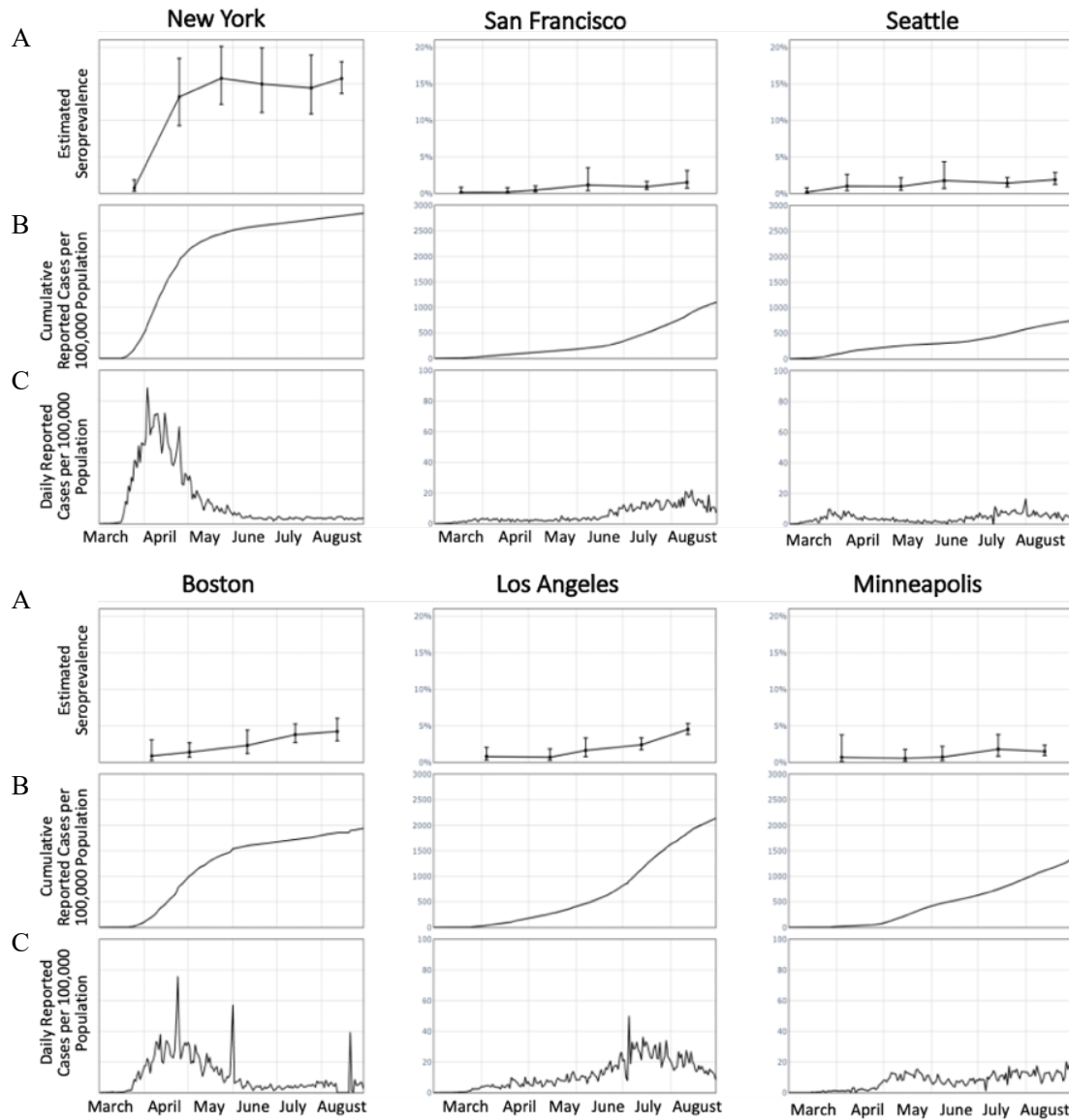


Panel B



**Figure 2.** Monthly distribution of all Ortho Vitros SARS-CoV-2 Total Immunoglobulin (Ig) assay values (panel A) and unadjusted and weighted cumulative seroprevalence (panel B), six U.S. metropolitan regions, March–August 2020. Panel A: Red lines indicate the Vitros CoV2T signal to cutoff value for reactivity ( $S/CO$  ratio = 1.0;  $\text{Log}_{10} S/CO$  ratio = 0). Black symbols indicate confirmed reactive samples based on the study algorithm and black lines indicate the mean signal intensity of the Vitros CoV2T reactive donation samples for each region for each month of the study. Grey symbols above the Vitros CoV2T cutoff threshold indicate samples that were reactive by the Vitros CoV2T screening assay but which did not confirm using the study algorithm. Grey symbols below the red line indicate samples that were nonreactive on the Vitros CoV2T assay. The open black symbol (Seattle panel, June column) indicates the only sample with Vitros

CoV2T S/CO >10 which did not confirm. N= Number of sampled donations for each month. Panel B: Screened and confirmed, and confirmed restricted to ZIP code of residence seroprevalence for each region.



**Figure 3.** Weighted confirmed SARS-CoV-2 seroprevalence derived from blood donors (A), reported COVID-19 case rates per 100,000 population\* (B), and daily COVID-19 case rates per 100,000\* (C) in six U.S. metropolitan regions, March–August 2020.

\*Reported COVID-19 cases reported to CDC.