

COVID-19 Outcomes and Sequencing of SARS-CoV-2 isolated from Veterans in New England

Megan Lee, BS¹; Ya Haddy Sallah, MPH¹; Matt Ringer, MD¹; Mary Petrone, PhD²; Nathan Grubaugh, PhD²; Shaili Gupta, MBBS^{1,3}

¹Yale School of Medicine, New Haven, Connecticut, United States

²Yale School of Public Health, New Haven, Connecticut, United States

³VA Connecticut Healthcare System West Haven, Connecticut, United States

Running Title: COVID-19 Outcomes in New England Veterans

Funding source: Part of this work (whole genome sequencing) was supported by a CDC grant:

BAA 75D301-20-R-68024

Word Count: 1927 words

COI: The authors have no conflicts of interest

Corresponding Author

Shaili Gupta, MBBS

Department of Medicine, Yale School of Medicine

VA Connecticut Healthcare System

950 Campbell Ave, Bldg 1, 5th floor, Mailstop 111

West Haven, CT 06516

E-mail: shaili.gupta@yale.edu; phone: 203-932-5711, ext 4412; fax: 203-932-3748

Key words: COVID-19, SARS-CoV-2, factors affecting outcomes, COVID disease severity, Veterans

Abstract:

Background: Clinical outcomes of Veterans with COVID-19 in New England and respective genomic variants of SARS-CoV-2 have not been described. Factors impacting outcomes will inform triage and management algorithms. We proposed to conduct these clinical and genomic evaluations.

Methods: We recorded demographics, comorbidities, and outcomes for 274 patients with COVID-19 in 6 states (CT, MA, ME, NH, RI, VT) from 4/8/20-9/16/20, and used STATA v16 for logistic regressions. Peak disease severity was defined from grade 1-5 as no O₂ requirement, 1-3 liters (L) by nasal cannula (NC), 4-6 L NC, >6 L O₂ or non-invasive positive pressure ventilation, and mechanical ventilation. We generated 64 whole genomes from 3/31/20-5/11/20 using Illumina (238) and Nanopore (61) platforms and built a phylogenetic tree (Nextstrain).

Results: Of 274 Veterans, 92.7% were male, 83.2% white, and mean age was 63 years (IQR: 51 to 74 years). Over a third resided in a long-term care facility, and most common comorbidities were coronary artery disease (27%), diabetes (25%), and tobacco use (23%). 11.7% of patients required O₂ within 24 hours of admission, with 20.8% of all patients requiring O₂ support above their baseline during the hospitalization. Overall, 28.8% were hospitalized, with the highest rates in people with COPD (50%), CAD (45.9%), and those over age 80 years (44.4%). The overall mortality rate was 10.6%, with the highest rates in people with dementia (33.3%), age >80 (28.9%), and those from LTC (23.9%). On multivariate regression, significant predictors of hospitalization were age (OR: 1.05) and Non-white race (OR: 2.39). Peak severity also varied by age (OR: 1.07) and O₂ requirement on admission (OR: 45.7). Mortality was predicted by age (OR: 1.06), dementia (OR: 3.44), and O₂ requirement on admission (OR: 6.74).

Most of our samples were in the A (2.36%) and B (97.3%) lineages. One genome was part of the N.1 lineage. Notably, the majority of genomes (97%) are part of the B1 lineage, which is defined by a D614G substitution.

Conclusions: Our study found that in an older cohort of Veterans from the six New England states with a high comorbidity burden, age was the single strongest predictor of hospitalization, peak severity, and mortality. Non-white Veterans were more likely to be hospitalized, and patients who required oxygen on admission were more likely to have severe disease and higher rates of mortality. Furthermore, patients with dementia were more likely to die. Multiple genomic variants of SARS-CoV-2 were distributed in patients in New England early in the COVID-19 era, mostly in the New York clade with a D614G mutation.

Introduction

The Coronavirus Disease 2019 (COVID-19) caused by Severe Acute Respiratory Syndrome Coronavirus-2 (SARS-CoV-2) has infected nearly 30 million people in the United States and caused over 500,000 deaths.¹ Disease severities and outcomes vary among individuals who become infected, and throughout the course of the pandemic, researchers have tried to identify patient characteristics and comorbidities that may predispose patients to having worse outcomes. It still remains unclear why some people have severe disease requiring intubation or death, while others have asymptomatic infections. Some factors that have been shown to impact disease severity and mortality include Charlson comorbidity index score, age, and body mass index (BMI).²⁻⁶

The genomic sequence of the virus itself may also impact the severity of disease. Previous research has divided globally circulating SARS-CoV-2 viruses into 5 major clades based on an 11-nucleotide barcode.⁷ These clades and mutations within them could impact infectivity and virulence. Early during the pandemic course in the United States, viral isolates on the East Coast predominantly saw the Spike Protein D614G mutation.⁸ This mutation has been suggested to have higher transmissibility(Ref),⁹ supported by the higher upper airway viral loads and higher viral replication in lung epithelial cells.¹⁰ At the same time, the D614G variant has also been found to be more susceptible to neutralization by antibodies generated by infection with wild-type virus.^{11,12} With the increasing focus on possible mutations such as the “UK variant” (B.1.1.7) being more lethal,¹³ more research is required on how mutations affect patient outcomes.

Given the high variability and conflicting data in predicting who will have poor outcomes, it becomes important to assess specific populations to give providers the best clinical

picture on their patients. Clinical outcomes of Veterans with COVID-19 in New England and respective genomic variants of SARS-CoV-2 have not been described. We aimed to (1) describe patient characteristics, comorbidities, and disease factors that impact patient outcomes and (2) present data on the genomes of the viruses in these patients who were infected. Factors impacting outcomes will inform triage and management algorithms in these patients.

Methods

Our cohort was composed of all Veterans receiving care at Veterans Administration centers who tested positive in six New England states (CT, MA, ME, NH, RI, VT) from April 8, 2020, to September 16, 2020. We manually reviewed charts and recorded demographics (age, gender, race, BMI, long-term care facility (LTC) status, state). We recorded history of comorbidities, including immunosuppression, dementia, diabetes mellitus, chronic kidney disease (CKD) stage 3 or higher, chronic liver disease, coronary artery disease (CAD), heart failure, atrial fibrillation (aFib), chronic obstructive pulmonary disease (COPD), asthma, and current or recent tobacco use (based on patients eligible for lung cancer screening).¹⁴ Protocols were approved by Veterans Administration (VA) Connecticut Institutional Review Board.

We recorded hospitalization status of patients, mortality, and whether patients required oxygen (O₂) within 24 hours of admission. Lastly, we divided patients based on their peak severity status depending on oxygenation requirements, dividing them into 5 categories: 1) no O₂ requirement, 2) 1-3 liters (L) by nasal cannula (NC), 3) 4-6 L NC, 4) >6 L O₂ or non-invasive positive pressure ventilation (NIPPV), and 5) mechanical ventilation. We used STATA v16 for univariate and multivariate logistic regressions on finding predictors of the outcomes of interest.

For the genetic data, we sequenced 299 whole genomes (20x coverage, $\geq 70\%$ of genome) using Illumina (n = 238) and Nanopore (n = 61 platforms). Using BWA-MEM version 0.7.15, we aligned reads to the Wuhan-Hu-1 reference genomes (GenBank MN908937.3). With iVar v1.2.1, we trimmed sequencing adaptors and primer sequences and called bases by simple majority ($>50\%$ frequency) at each site to generate consensus genomes. An ambiguous N was used when fewer than 10 reads were present at a site.

We aligned these consensus genomes with MAFFT,¹⁵ and masked problematic sites.^{16,17} We then built a phylogenetic tree with IQTree¹⁷ using an HKY substitution model and 1000 bootstraps. We visualized this tree using the Python module baltic v0.1.5. We used Pangolin to assign lineages to our genomes.

Results

Of 274 Veterans, 92.7% were male, 83.2% white, and mean age was 63 years \pm 17.6 years (Table 1). Over a third resided in a long-term care facility (LTC) (n=92), of which 76% were at the VA's community living center. Over half the residents were from Massachusetts, and one third from Connecticut. Most common comorbidities were coronary artery disease (27%), diabetes (25%), and tobacco use (23%).

Overall, 20.8% of all patients required oxygen support above their baseline home oxygen dose throughout their hospitalization. Additionally, 11.7% of all patients required O₂ within 24 hours of admission. In terms of peak severity, 78.5% required only room air, 10.9% required 1-3 L NC, 4.0% required 4-6 L NC, 3.6% required >6 L or NIPPV, and 2.2% required mechanical intubation. The hospitalization rate was 28.8% (Figure 1), with the highest rates in people with COPD (50%), CAD (45.9%), and those over age 80 years (44.4%). The overall mortality rate

was 10.6% (Figure 2), with the highest rates in people with dementia (33.3%), age >80 (28.9%), and those from LTC (23.9%).

On univariate regression, significant predictors of hospitalization were age (Odds Ratio (OR): 1.06), non-white race (OR: 1.97), LTC residence (OR: 1.78), COPD (OR: 3.04), CAD (OR: 2.93), and aFib (OR: 2.05) (Table 2). Peak severity increased with age (OR: 1.06), LTC residence (OR: 2.8), CAD (OR: 2.1), aFib (OR: 2.97), and O2 requirement on admission (OR: 46.2). Higher mortality was seen with age (OR: 1.10), LTC residence (OR: 7.86), BMI<30 (OR: 5.80), dementia (OR: 7.23), aFib (OR: 3.11), hospitalization (OR: 2.58), and O2 requirement on admission (OR: 4.34).

On multivariate regression, significant predictors of hospitalization were age (OR: 1.05) and Non-white race (OR: 2.39) (Table 3). Peak severity also varied by age (OR: 1.07) and O2 requirement on admission (OR: 45.7). Mortality was predicted by age (OR: 1.06), dementia (OR:3.44), and O2 requirement on admission (OR: 6.74). This means that for every year increase in age, the odds of hospitalization increased by 5%, peak severity increased by 7%, and mortality increased by 6%.

For the genomes, we found that all but one is part of 2 main lineages: A (2.36%) and B (97.3%) (Figure 3). One genome is part of the N.1 lineage. Notably, the majority of genomes (97%) are part of the B1 lineage, which is defined by a D614G substitution.

Discussion

Our study found that in an older cohort of Veterans from the six New England states with a high comorbidity burden, age was the single strongest predictor of hospitalization, peak severity, and mortality. Our study is unique in that it is the first to look at several COVID-19

outcomes in this population of Veterans. The CDC currently has a list of chronic medical conditions that predispose individuals to severe illness from COVID-19 infection.¹⁸ However, the list is so extensive that one study found over 75% of United States adult would fall under a high-risk category.¹⁹ Thus, understanding clinical factors that impact outcomes in Veterans in the Northeast will help clinicians in risk stratification for patients with similar demographic profiles.

Our primary outcome is that age is associated with worse outcomes and has been supported by nearly all studies on COVID-19 outcomes.²⁰⁻²⁴ In our study, the impact of age was so large that most comorbidities became insignificant after adjusting for it. Interestingly, long term care status predicted all three of our outcomes on univariate analysis, but became insignificant after adjusting for age on multivariate analysis. Early during the COVID-19 era, residents of nursing homes had higher rates of infection as well as severe illness and mortality.²⁵ Our study shows that for Veterans in a long term care facility, a majority of which was the VA's community living center, their disease outcomes were not impacted by their residence status.

Concurrent work in our lab suggests that oxygen requirement on admission predicts poor outcomes in Veterans. Similarly, our study found that patients who required oxygen within 24 hours of admission had worse outcomes. This is an important finding because other ways of using oxygenation status, such as the arterial oxygen saturation/ fraction of inspired oxygen (SaO₂/FiO₂) ratio,²⁶ can frequently change and thus become difficult for clinicians to use in practice. Knowing that patients who require oxygen within 24 hours of admission can help providers more easily triage who will likely end up requiring a higher level of care and are at higher risk of death throughout the admission.

Our finding that non-White participants were more likely to be hospitalized but experienced similar peak severity and mortality outcomes was repeated by several studies across

different hospital systems.^{27,28} One study of 5902 patients with COVID-19 in New York found that non-Hispanic Black patients were more likely to test positive for coronavirus but had similar outcomes.²⁹ Similar to our study, Azar et al. found that in 1052 cases of COVID in California, non-Hispanic African American patients had 2.7 increase in odds of being hospitalized.³⁰ Cardemil et al. also found a 4.6 and 4.2-fold increase in rates of hospitalization for Hispanic and Black veterans, respectively.²⁸ Many studies have shown that minorities often have delays in care due to mistrust of the medical system because of providers' implicit biases,^{31,32} and our results may indicate that non-white patients had more advanced or severe illness at the time of presentation. It is critical to continue ongoing efforts to combat medical inequities and target prevention efforts and education to communities and racial groups most affected by COVID-19.

Even after adjusting for age and other comorbidities, we found that patients with dementia had a higher risk of death. This is similar to other studies on patients with COVID-19 and dementia.^{24,33,34} In a meta-analysis of 46,391 patients, Hariyanto et al. found that dementia was significantly associated with a higher risk of severe infection (relative risk: 2.63) and death (relative risk: 2.62).³⁵ This may be explained by a host of biological factors,³⁵ but it emphasizes the importance of extra care and monitoring required when approached with a patient with dementia. In this vulnerable population that may not be able to voice their symptoms, providers and caregivers must ensure they receive sufficient support throughout the course of their illness.

Limitations of this work include the smaller sample size. We are working on a larger study based off of these results by increasing our date ranges and capturing more patients. Furthermore, our study is specific to Veterans, which is a largely male and older cohort, and may not be generalizable to women. Our study time period was prior to established medical therapies for COVID and our outcomes reported are likely worse than you would expect today. Since this

was during the first wave of the pandemic when standard guidelines were not yet solidified, many patients not requiring oxygen were admitted which is not standard of practice today. Strengths of our study include its comprehensive scope, wide geographic range, manual chart review allowing for the capturing of all comorbidities and oxygenation parameters that may not be available otherwise in a database, and multivariate analysis of many potential risk factors.

Conclusion

Our study found that in an older cohort of Veterans from the six New England states with a high comorbidity burden, age was the single strongest predictor of hospitalization, peak severity, and mortality. Non-white Veterans were more likely to be hospitalized, and patients who required oxygen on admission were more likely to have severe disease and higher rates of mortality. Furthermore, patients with dementia were more likely to die. Multiple genomic variants of SARS-CoV-2 were distributed in patients in New England early in the COVID-19 era, mostly in the B1 clade with a D614G mutation.

Table 1 – Patient Characteristics (n = 274)

Demographics		Comorbidities	
Age	62.9+17.6	Immunosuppressed	10 (4)
Gender		Dementia	42 (15)
Male	254 (93)	Diabetes	68 (25)
Female	20 (7)	CKD 3	18 (7)
Race		Chronic liver disease	32 (12)
White	228 (83)	Chronic heart disease	107 (39)
Non-white	46 (17)	CAD	74 (27)
BMI > 30	110 (40)	Heart failure	29 (11)
From LTC	92 (34)	Atrial fibrillation	40 (15)
State		Chronic Lung disease	97 (35)
Connecticut	89 (32)	COPD	44 (16)
Massachusetts	150 (55)	Asthma	19 (7)
Maine	4 (1)	OSA	55 (20)
New Hampshire	9 (3)	Tobacco Use	62 (23)
Rhode Island	20 (7)		
Vermont	2 (1)		

Results are presented as numbers (percentages).

Abbreviations: LTC - long term care, BMI – body mass index, CKD – chronic kidney disease, CAD – coronary artery disease, COPD – chronic obstructive pulmonary disease, OSA – obstructive sleep apnea

Figure 1. Percent of patients hospitalized, based on patient demographics and comorbidities

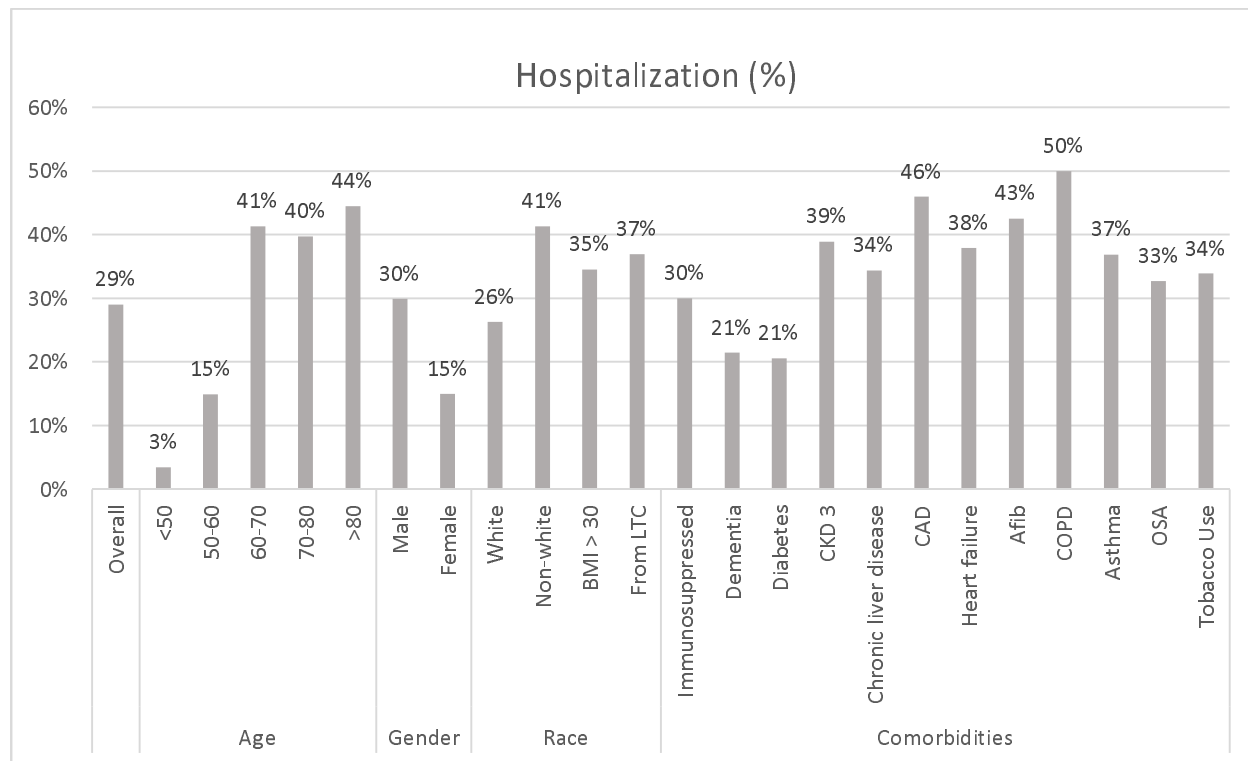


Figure 2. Percent of patients who died, based on patient demographics and comorbidities

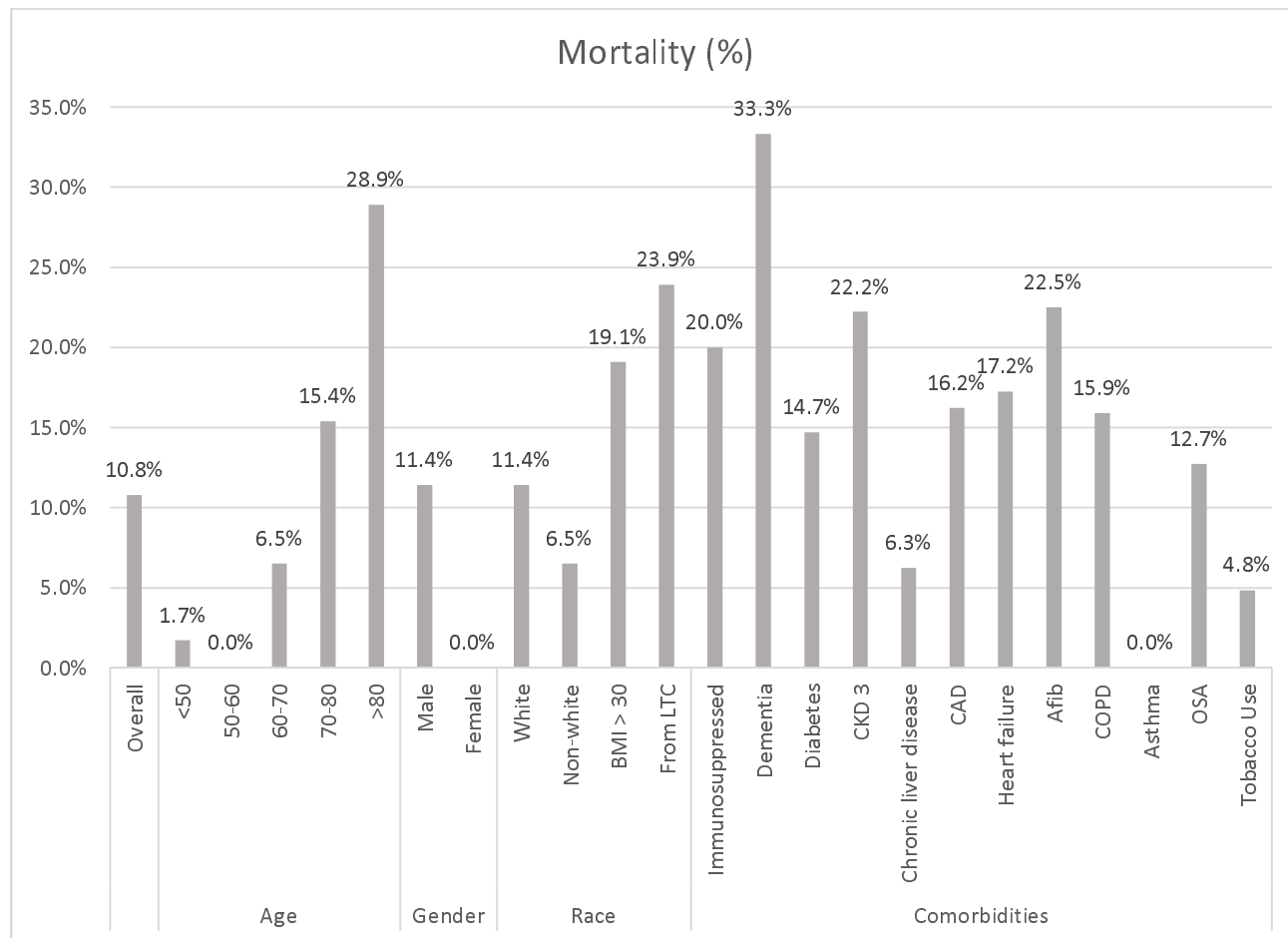


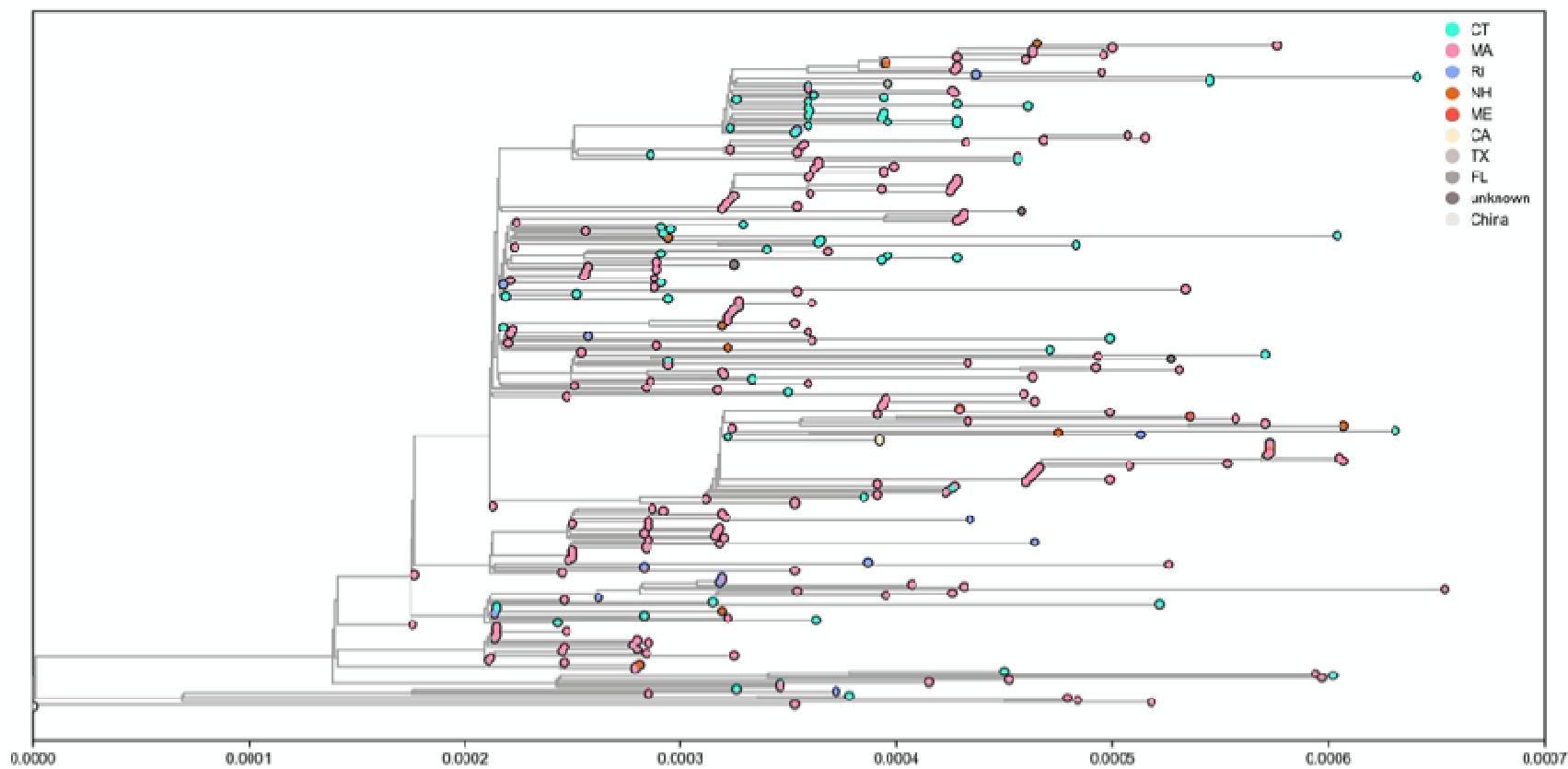
Table 2. Univariate regression analysis

	Hospitalization		Peak Severity		Death	
	Unadjusted OR (95% CI)	P-value	Unadjusted OR (95% CI)	P-value	Unadjusted OR (95% C.)	P-value
Demographics						
Age	1.06 (1.03-1.08)	<0.001*	1.06 (1.04 - 1.09)	<0.001*	1.1 (1.06 - 1.14)	<0.001*
Gender						
Male	Ref		Ref		Ref	
Female	0.41 (0.12- 1.45)	0.17	0.42 (0.95 - 1.9)	0.26	n/a	n/a
Race						
White	Ref		Ref		Ref	
Non-White	1.97 (1.02 - 3.8)	0.04*	1.3 (0.6 - 2.6)	0.55	0.54 (0.16 - 1.9)	0.33
From Long Term Facility	1.78 (1.04 - 3.07)	0.04*	2.8 (1.5 - 5.1)	0.001*	7.9 (3.2 - 19.2)	<0.001*
Clinical Characteristics						
BMI < 30	1.52 (0.9 - 2.7)	0.14	1.1 (0.6 - 2)	0.77	5.8 (2.1 - 15.9)	0.001*
Dementia	0.63 (0.29 - 1.4)	0.25	1.6 (0.7 - 3.3)	0.26	7.2 (3.2 - 16.6)	<0.001*
COPD	3.04 (1.6 - 5.9)	0.001*	1.5 (0.74 - 3.2)	0.25	1.8 (0.7 - 4.5)	0.22
Heart Failure	1.6 (0.7 - 3.5)	0.25	1.8 (0.8 - 4.0)	0.18	1.9 (0.67 - 5.5)	0.23
CAD	2.93 (1.66 - 5.2)	<0.001*	2.1 (1.2 - 3.9)	0.016*	2.1 (0.9 - 4.6)	0.07
Atrial Fibrillation	2.05 (1.03 - 4.1)	0.04*	3 (1.4 - 5.9)	0.002*	3.1 (1.3 - 7.4)	0.01*
Hospitalization	n/a		n/a		2.58 (1.18-5.65)	0.017*
O2 on admission	n/a		46.2 (19.9, 107.3)	<0.001*	4.34 (1.77 - 10.6)	0.001*

Table 3. Multivariate regression analysis

	Hospitalization		Peak Severity		Death	
	OR (95% C.I)	P-value	OR (95% C.I)	P-value	OR (95% C.I)	P-value
Demographics						
Age	1.05 (1.03, 1.08)	<.001*	1.07 (1.03 - 1.11)	<0.001*	1.06 (1.01, 1.11)	0.019*
Race						
White	Ref		n/a		n/a	
Non-White	2.39 (1.13, 5.01)	0.021*				
From long term facility	0.70 (0.36, 1.38)	0.307	1.18 (0.55, 2.55)	0.668	2.0 (0.58, 6.88)	0.273
Clinical Characteristics						
BMI < 30	n/a		n/a		2.95 (0.81, 10.75)	0.102
Dementia	n/a		n/a		3.44 (1.07, 11.1)	0.038*
COPD	1.73 (0.84, 3.35)	0.136	n/a		n/a	
CAD	1.44 (0.75, 2.81)	0.273	0.71 (0.32, 1.55)	0.390	0.57 (0.209, 1.57)	0.283
Atrial Fibrillation	0.984 (0.45, 2.16)	0.969	1.11 (0.46, 2.64)	0.819	1.25 (0.42, 3.69)	0.686
Hospitalization	n/a		n/a		1.36 (0.40, 4.65)	0.631
O2 on admission	n/a		45.7 (18.79, 111)	<0.001*	6.74 (1.74, 26.1)	0.006*

Figure 3. Maximum Likelihood tree of genomes



Literature Cited

1. U.S. Department of Health & Human Services. Published COVID Data Tracker. Accessed March 25, 2021.
2. Wu C, Chen X, Cai Y, et al. Risk Factors Associated With Acute Respiratory Distress Syndrome and Death in Patients With Coronavirus Disease 2019 Pneumonia in Wuhan, China. *JAMA Intern Med.* 2020;180(7):934-943.
3. Richardson S, Hirsch JS, Narasimhan M, et al. Presenting Characteristics, Comorbidities, and Outcomes Among 5700 Patients Hospitalized With COVID-19 in the New York City Area. *Jama.* 2020;323(20):2052-2059.
4. Ioannou GN, Locke E, Green P, et al. Risk Factors for Hospitalization, Mechanical Ventilation, or Death Among 10 131 US Veterans With SARS-CoV-2 Infection. *JAMA Netw Open.* 2020;3(9):e2022310.
5. Garg S, Kim L, Whitaker M, et al. Hospitalization Rates and Characteristics of Patients Hospitalized with Laboratory-Confirmed Coronavirus Disease 2019 - COVID-NET, 14 States, March 1-30, 2020. *MMWR Morb Mortal Wkly Rep.* 2020;69(15):458-464.
6. Simonnet A, Chetboun M, Poissy J, et al. High Prevalence of Obesity in Severe Acute Respiratory Syndrome Coronavirus-2 (SARS-CoV-2) Requiring Invasive Mechanical Ventilation. *Obesity (Silver Spring).* 2020;28(7):1195-1199.
7. Guan Q, Sadykov M, Mfarrej S, et al. A genetic barcode of SARS-CoV-2 for monitoring global distribution of different clades during the COVID-19 pandemic. *International Journal of Infectious Diseases.* 2020;100:216-223.
8. Brufsky A. Distinct viral clades of SARS-CoV-2: Implications for modeling of viral spread. *Journal of Medical Virology.* 2020;92(9):1386-1390.
9. Korber B, Fischer WM, Gnanakaran S, et al. Tracking Changes in SARS-CoV-2 Spike: Evidence that D614G Increases Infectivity of the COVID-19 Virus. *Cell.* 2020;182(4):812-827.e819.
10. Lorenzo-Redondo R, Nam HH, Roberts SC, et al. A clade of SARS-CoV-2 viruses associated with lower viral loads in patient upper airways. *EBioMedicine.* 2020;62.
11. Plante JA, Liu Y, Liu J, et al. Spike mutation D614G alters SARS-CoV-2 fitness. *Nature.* 2021;592(7852):116-121.
12. Weissman D, Alameh MG, de Silva T, et al. D614G Spike Mutation Increases SARS CoV-2 Susceptibility to Neutralization. *Cell Host Microbe.* 2021;29(1):23-31.e24.
13. Davies NG, Jarvis CI, Edmunds WJ, Jewell NP, Diaz-Ordaz K, Keogh RH. Increased mortality in community-tested cases of SARS-CoV-2 lineage B.1.1.7. *Nature.* 2021.
14. Wender R, Fontham ETH, Barrera Jr E, et al. American Cancer Society lung cancer screening guidelines. *CA: A Cancer Journal for Clinicians.* 2013;63(2):106-117.
15. Katoh K, Standley DM. MAFFT Multiple Sequence Alignment Software Version 7: Improvements in Performance and Usability. *Molecular Biology and Evolution.* 2013;30(4):772-780.
16. Nicola De Maio* CW, Rui Borges, Lukas Weilguny, Greg Slodkowicz, Nick Goldman. Masking strategies for SARS-CoV-2 alignments. <https://virological.org/t/masking-strategies-for-sars-cov-2-alignments/480>. Published 2020. Accessed April 9, 2021.

17. Minh BQ, Schmidt HA, Chernomor O, et al. IQ-TREE 2: New Models and Efficient Methods for Phylogenetic Inference in the Genomic Era. *Molecular Biology and Evolution*. 2020;37(5):1530-1534.
18. People with Certain Medical Conditions. In: CDC, ed2021.
19. Ajufo E, Rao S, Navar AM, Pandey A, Ayers CR, Khera A. U.S. population at increased risk of severe illness from COVID-19. *Am J Prev Cardiol*. 2021;6:100156-100156.
20. Kim L, Garg S, O'Halloran A, et al. Risk Factors for Intensive Care Unit Admission and In-hospital Mortality among Hospitalized Adults Identified through the U.S. Coronavirus Disease 2019 (COVID-19)-Associated Hospitalization Surveillance Network (COVID-NET). *Clin Infect Dis*. 2020:ciaa1012.
21. Ioannou GN, Locke E, Green P, et al. Risk Factors for Hospitalization, Mechanical Ventilation, or Death Among 10 131 US Veterans With SARS-CoV-2 Infection. *JAMA network open*. 2020;3(9):e2022310-e2022310.
22. Williamson EJ, Walker AJ, Bhaskaran K, et al. Factors associated with COVID-19-related death using OpenSAFELY. *Nature*. 2020;584(7821):430-436.
23. Docherty AB, Harrison EM, Green CA, et al. Features of 20 133 UK patients in hospital with covid-19 using the ISARIC WHO Clinical Characterisation Protocol: prospective observational cohort study. *BMJ*. 2020;369:m1985-m1985.
24. Giorgi Rossi P, Marino M, Formisano D, et al. Characteristics and outcomes of a cohort of COVID-19 patients in the Province of Reggio Emilia, Italy. *PLoS One*. 2020;15(8):e0238281-e0238281.
25. Evan SBJMQLESEMAAMMSJREALBDAP. Rates of COVID-19 Among Residents and Staff Members in Nursing Homes — United States, May 25–November 22, 2020. *MMWR Morb Mortal Wkly Rep* 2021. 2021.
26. Garibaldi BT, Fiksel J, Muschelli J, et al. Patient Trajectories Among Persons Hospitalized for COVID-19 : A Cohort Study. *Ann Intern Med*. 2021;174(1):33-41.
27. Gold JAW, Wong KK, Szablewski CM, et al. Characteristics and Clinical Outcomes of Adult Patients Hospitalized with COVID-19 - Georgia, March 2020. *MMWR Morb Mortal Wkly Rep*. 2020;69(18):545-550.
28. Cardemil CV, Dahl R, Prill MM, et al. COVID-19-Related Hospitalization Rates and Severe Outcomes Among Veterans From 5 Veterans Affairs Medical Centers: Hospital-Based Surveillance Study. *JMIR Public Health Surveill*. 2021;7(1):e24502-e24502.
29. Kabarriti R, Brodin NP, Maron MI, et al. Association of Race and Ethnicity With Comorbidities and Survival Among Patients With COVID-19 at an Urban Medical Center in New York. *JAMA network open*. 2020;3(9):e2019795-e2019795.
30. Azar KMJ, Shen Z, Romanelli RJ, et al. Disparities In Outcomes Among COVID-19 Patients In A Large Health Care System In California. *Health Aff (Millwood)*. 2020;39(7):1253-1262.
31. Nelson A. Unequal treatment: confronting racial and ethnic disparities in health care. *J Natl Med Assoc*. 2002;94(8):666-668.
32. Hall WJ, Chapman MV, Lee KM, et al. Implicit Racial/Ethnic Bias Among Health Care Professionals and Its Influence on Health Care Outcomes: A Systematic Review. *Am J Public Health*. 2015;105(12):e60-e76.

33. Harrison SL, Fazio-Eynullayeva E, Lane DA, Underhill P, Lip GYH. Comorbidities associated with mortality in 31,461 adults with COVID-19 in the United States: A federated electronic medical record analysis. *PLoS Med.* 2020;17(9):e1003321-e1003321.
34. Miyashita S, Yamada T, Mikami T, Miyashita H, Chopra N, Rizk D. Impact of dementia on clinical outcomes in elderly patients with coronavirus 2019 (COVID-19): an experience in New York. *Geriatr Gerontol Int.* 2020;20(7):732-734.
35. Hariyanto TI, Putri C, Arisa J, Situmeang RFV, Kurniawan A. Dementia and outcomes from coronavirus disease 2019 (COVID-19) pneumonia: A systematic review and meta-analysis. *Arch Gerontol Geriatr.* 2021;93:104299-104299.