

Head and body dyskinesia during gait in tactical athletes with vestibular deficit following concussion

John J. Fraser, PT, DPT, PhD,^{a,*} Jacob VanDehy, MS,^{a,b} Dawn M. Bodell, PT, DPT,^{a,b} Kim R. Gottshall, PT, PhD^{b,c} Pinata H. Sessoms, PhD^a

^a*Warfighter Performance Department, Operational Readiness and Health Directorate, Naval Health Research Center, 140 Sylvester Road, San Diego, CA 92106, USA;*

^b*Leidos, Inc., 4161 Campus Point Court, San Diego, CA 92121, USA;*

^c*Florida Ear and Balance Center, 410 Celebration Place, Kissimmee, FL 34747, USA*

Word count: 2538

*Corresponding author: John J Fraser, Warfighter Performance Department, Naval Health Research Center, 140 Sylvester Road, San Diego, CA 92106, USA. Tel: 757-438-0390, email: john.j.fraser8.mil@mail.mil, ORCID: 0000-0001-9697-3795, Twitter: @NavyPT

Funding: This work was supported by the U.S. Navy Bureau of Medicine and Surgery under work unit no. N1703.

Disclaimer: The author(s) are military service members or employees of the U.S. Government and this work was prepared as part of their official duties. Title 17, U.S.C. §105 provides that copyright protection under this title is not available for any work of the U.S. Government. Title

17, U.S.C. §101 defines a U.S. Government work as work prepared by a military service member or employee of the U.S. Government as part of that person's official duties. Report No. 19-69 was supported by the U.S. Navy Bureau of Medicine and Surgery under work unit no. N1703. The views expressed in this article are those of the authors and do not necessarily reflect the official policy or position of the Department of the Navy, Department of Defense, nor the U.S. Government. The study protocol was approved by the Naval Health Research Center Institutional Review Board in compliance with all applicable Federal regulations governing the protection of human subjects. Research data were derived from an approved Naval Health Research Center Institutional Review Board protocol, number NHRC.2015.0010. All participants provided informed consent.

Presented at the Military Health System Research Symposium, August 20, 2018, Orlando, FL and is archived at doi:10.7490/f1000research.1115992. The preprint of the manuscript is archived on medRxiv and accessible at doi:10.1101/2021.04.27.21256200

1 ABSTRACT

2 *Background:* Vestibular deficit is common following concussion and may affect gait. The
3 purpose of this study was to investigate differences in head and pelvic center of mass (COM)
4 movement during gait in tactical athletes with and without concussion-related central vestibular
5 impairment.

6 *Material & Methods:* 24 patients with post-concussion vestibular impairment (20 males, 4
7 females; age: 31.7 ± 7.9 years; BMI: 27.3 ± 3.3) and 24 matched controls (20 males, 4 females;
8 age: 31.8 ± 6.4 years; BMI: 27.2 ± 2.6) were included in the analyses. Three-dimensional head and
9 pelvic COM displacement and velocities were collected at a 1.0 m/s standardized treadmill
10 walking speed and assessed using Statistical Parametric Mapping t-tests. Maximum differences
11 (d_{\max}) between groups were reported for all significant kinematic findings.

12 *Results:* The Vestibular group demonstrated significantly diminished anteroposterior head
13 excursions ($d_{\max}=2.3$ cm, $p=0.02$;) and slower anteroposterior ($d_{\max}=0.37$ m/s, $p=0.01$),
14 mediolateral ($d_{\max}=0.47$ m/s, $p=0.02$) and vertical ($d_{\max}=0.26$ m/s, $p<0.001$) velocities during
15 terminal stance into pre-swing phases compared to the Control group. Vertical pelvic COM
16 excursion was significantly increased in midstance ($d_{\max}=2.4$ cm, $p=0.03$) and mediolaterally
17 during pre- to initial-swing phases ($d_{\max}=7.5$ cm, $p<0.001$) in the Vestibular group. In addition,
18 Pelvic COM velocities of the Vestibular group were higher mediolaterally during midstance
19 ($d_{\max}=0.19$ m/s, $p=0.02$) and vertically during post-initial contact ($d_{\max}=0.14$ m/s, $p<0.001$) and
20 pre-swing ($d_{\max}=0.16$ m/s, $p<0.001$) compared to the Control group.

21 *Significance:* The Vestibular group demonstrated a more constrained head movement strategy
22 during gait compared with Controls, a finding that is likely attributed to a neurological
23 impairment of visual-vestibular-somatosensory integration.

24

25 *Keywords:* movement, walking, dizziness, mild traumatic brain injury, impairment

26 1. Introduction

27 Concussion, also known as mild traumatic brain injury (mTBI), is a common clinical
28 entity experienced by more than 22 400 tactical athletes in the United States Armed Forces(1)
29 and is responsible for more than 2.8 million civilian emergency room visits per annum.(2) Many
30 individuals who sustain a concussion experience signs and symptoms that include dizziness,
31 imbalance, dyskinesia, and cognitive deficit.(3) These manifestations are a result of
32 neurophysiological impairment in higher-order brain function, pyramidal and extrapyramidal
33 motor pathways, and vestibular function.(4) These alterations in visual-vestibular-somatosensory
34 integration may persist well beyond the initial injury. Athletes with prior history of concussion
35 have been found to have lasting alteration in static and dynamic postural control at an average 44
36 months following injury.(5) Visual-vestibular-somatosensory integration deficits may affect
37 smooth pursuit, vestibulo-ocular reflex (VOR), dynamic visual acuity, gaze stabilization,
38 subjective visual vertical, and spatial orientation during execution of complex motor tasks such
39 as walking.

40 Individuals with concussion have been reported to have gait differences compared with
41 healthy controls. In a recent systematic review assessing gait changes following concussion,
42 individuals have been found to walk slower in the early acute phase (6 of 14 studies) that
43 resolved within 10 days (10 of 13 studies).(6) There were mixed results for measures of stride
44 length acutely (decreased in 2 of 7 studies) and double support time (increased in 2 of 5 studies)
45 from intermediate to long-term time-points following injury. (6) Decreased anteroposterior (4 of
46 13 studies) and increased mediolateral center of mass (COM) movement (3 of 12 studies) was
47 observed acutely following injury that was primarily resolved by 10 days post-injury (8 of 9

48 studies).(6) It is highly likely that the wide variability of findings observed during gait is related
49 to heterogeneity of neurological impairment found in this clinical population.

50 Little is known regarding the effects of central vestibular impairment on head and pelvic
51 kinematics during walking following concussion. In a preliminary study of head and trunk
52 mechanics during gait, tactical-athletes with vestibular deficit resulting from concussion were
53 found to have asynchrony and large variability of the overall head position in relation to the
54 pelvic COM.(7) These findings warrant further investigation due to the small sample size and
55 large observed variability.(7) Therefore, the purpose of this study was to investigate head and
56 trunk mechanics during gait in tactical-athletes with and without vestibular deficit following
57 concussion.

58

59 2. Material & Methods

60 A descriptive laboratory cross-sectional study was performed where the independent
61 variable was group (Control, Vestibular). The outcome measures were COM displacement and
62 velocity of the head and pelvis in the sagittal, frontal, and transverse planes during treadmill
63 walking at a standardized 1.0 m/s.

64

65 2.1. Participants

66 After excluding one participant for suspected secondary gain, 24 tactical athletes in the
67 United States Armed Forces with post-concussion vestibular impairment (20 males, 4 females;
68 age: 31.7 ± 7.9 years; BMI: 27.3 ± 3.3) recruited from a military vestibular rehabilitation clinic
69 were included in the analyses. The control group was comprised of 24 tactical athletes without a
70 history of concussion (20 males, 4 females; age: 31.8 ± 6.4 years; BMI: 27.2 ± 2.6) that were

71 matched on sex, age, and BMI (Table 1). Participants in both groups were included if they were
72 active duty military between the ages of 18 and 50. Those who incurred a concussion 6 to 52
73 weeks prior to consent and had a medical diagnosis of a concussion-related central vestibular
74 disorder were included in the post-concussion Vestibular group [Dizziness Handicap Inventory:
75 41.0±19.9; Activities-specific Balance Confidence Scale: 73.7±17.1; Functional Gait
76 Assessment: 23.8±4.5; Computerized Dynamic Posturography Sensory Organization Test (SOT)
77 Composite: 63.1±12.1]. Healthy controls must have passed their most recent physical fitness
78 assessment.

79 Participants were excluded from participation if they had an orthopaedic condition that
80 could affect gait, impaired joint mobility, benign positional vertigo, fluctuating peripheral
81 vestibular dysfunction, non-organic behavior, conversion reactions, peripheral neuropathy,
82 oculomotor nuclei (III, IV, VI) abnormalities, motor impairment, central neurological diseases,
83 cerebral vascular accident, or were pregnant. Each participant gave informed consent before
84 participating in the study. While participants did not directly contribute to the design of this
85 study, specialist clinicians who care for and advocate for this patient population contributed.
86 Regarding dissemination, study participants will be provided a link to a website that explains the
87 research findings in common language. This study was approved by the Naval Health Research
88 Center Institutional Review Board (protocol NHRC.2015.0010).

89

90 2.2. Procedures

91 Figure 1 details the study flow sheet from recruitment to analysis. Following consent,
92 patients provided demographic information, and health and injury history. Height and mass were
93 measured. Patients were asked to walk at a 1.0 m/s pace on a dual-belt instrumented treadmill

94 (Motekforce Link, Amsterdam, The Netherlands) while looking forward at an optotype placed on
95 a screen in front of the treadmill. Subjects wore a safety harness to prevent them from falling but
96 the harness did not provide weight support.

97 Kinematic data were collected with a 14-camera optical motion capture system (Motion
98 Analysis Corp., Santa Rosa, CA, USA) at 120 Hz and referenced to the world. Three-
99 dimensional measurements of COM displacement and velocity for 10–15 consecutive strides
100 were averaged using 101 data points and normalized to initial contact (IC). Head movement was
101 tracked using a total of five photo-reflective markers affixed to a fitted ball cap worn on the head
102 (left, front, right, back, and top of the head). A cluster of four markers affixed to a rigid plastic
103 fixture and placed on the sacrum measured pelvic motion. A single heel marker affixed to the
104 counter of each shoe were used to demarcate initial contact during gait. Kinematic data were
105 processed using the Visual3D software (C-Motion Inc., Germantown, MD, USA). Head and
106 pelvic COM were calculated as the average X, Y, Z position of the head and pelvic markers,
107 respectively, while foot contact positions were collected using the heel markers. Velocities were
108 calculated as the first derivative of the positional data.

109

110 2.3. Statistical analysis

111 An *a priori* sample size estimation of 16 participants were needed based on the variance of head
112 stabilization,[6] an $\alpha=.05$, and $\beta=.20$. Descriptive statistics were calculated for demographic and
113 spatiotemporal gait characteristics and assessed for differences with independent t-tests using
114 MATLAB (MathWorks, Inc., Natick, MA, USA). Group differences in triplanar motion of the
115 head and pelvic COM over the gait cycle were assessed using Statistical Parametric Mapping
116 (SPM) t-tests using spm1d version 0.4, a package written by Pataky(8) for one-dimensional SPM

117 analysis for Python 3.6.5 (Python Software Foundation, Beaverton, OR, USA). Maximum
118 differences (d_{\max}) and mean difference (d_{mean}) between the two groups were reported for all
119 significant kinematic findings.

120

121 3. Results

122 There were no significant differences between the Vestibular and Control groups for age,
123 height, mass, or BMI (Table 1). The Vestibular group walked with a significantly wider base of
124 support (Table 1). There were no other significant gait differences between groups.

125 Figure 2 illustrates the COM motion of the head and pelvis in three dimensions. Several
126 significant group differences were observed in head and pelvic COM movement during gait
127 (Figure 3). The Vestibular group demonstrated diminished anteroposterior head excursions
128 ($d_{\max} = 2.3$ cm, $p = 0.02$) and slower anteroposterior ($d_{\max} = 0.34$ m/s, $p < 0.001$), mediolateral
129 ($d_{\max} = 0.47$ m/s, $p = 0.02$) and vertical ($d_{\max} = 0.26$ m/s, $p < 0.001$) velocities during terminal
130 stance into pre-swing phases compared to controls. Vertical pelvic COM excursion was
131 significantly increased in midstance ($d_{\max} = 2.4$ cm, $p = 0.03$) and mediolaterally during pre- to
132 initial-swing phases ($d_{\max} = 7.5$ cm, $p < 0.001$) in the Vestibular group. In addition, pelvic COM
133 velocities were higher mediolaterally during midstance ($d_{\max} = 0.19$ m/s, $p = 0.02$) and vertically
134 during post-IC ($d_{\max} = 0.14$ m/s, $p < 0.001$) and pre-swing ($d_{\max} = 0.16$ m/s, $p < 0.001$) in the
135 Vestibular group compared to the Control group.

136

137 4. Discussion

138 The primary findings of this study were that patients with post-concussion vestibular
139 deficit demonstrated a more constrained head but increased mediolateral and vertical pelvic

140 movement strategy during gait compared with the Control group, a finding that is likely
141 attributed to a deficit of the VOR, vestibulospinal reflex, and dynamic balance integration. To
142 our knowledge, these findings are the first to be reported within this clinical subpopulation.

143

144 4.1. Head mechanics

145 We posit that the observed lower head excursion and velocity are likely a compensation
146 for deficits in dynamic visual acuity (DVA), gaze stabilization, and subjective visual vertical
147 affecting static and dynamic spatial orientation. From a kinematic perspective, movement of the
148 head functions similarly to the proximal joints of the extremities. The mobility of the head allows
149 for multiple degrees of freedom when exploring the environment visually. Similar to the
150 extremities, proximal segmental stabilization of the head contributes to visual acuity, gaze
151 stability, and spatial orientation. Vestibulopathy following concussion likely manifests with
152 compensatory reduction of head excursion to try to stabilize gaze during dynamic gait. Further
153 research incorporating optical tracking in relation to head movement during gait tasking is
154 needed to substantiate this supposition.

155 The VOR, gaze stabilization, accurate subjective visual vertical, and the angular
156 vestibulocollic (VCR) and cervicocollic (CCR) reflexes are important in head stabilization and
157 control during static and dynamic function.(9) Increasing temporal stimulation of the
158 semicircular canals, otoliths sensitive to gravity, and the eyes contribute to ‘velocity storage’ in
159 the vestibular nuclei.(10) Individuals post-concussion may display high-gain VOR and a
160 propensity for motion intolerance. Decreased excursion of head motion response to external
161 moments is a countermeasure for the conflicting sensory afference when gait tasking is
162 superimposed. Both the VCR and the CCR function to dampen head movement(9) and are

163 normally inhibited during gait.(11) Our findings suggest that central vestibular impairment
164 resulting from concussion may disinhibit these reflexes during walking,(9,12) resulting in
165 diminished head movement during gait.

166 Mechanical or neurophysiological impairment resulting from zygapophyseal or muscular
167 injury in the cervical spine may contribute to constrained head movement. Kinematics of
168 concussion involved high accelerations of the head that are mitigated by cervical co-
169 contraction.(13) Cervical spine pain is a common comorbidity following concussion, a condition
170 that has many overlapping signs and symptoms.(14) It is plausible that injury to the cervical
171 joints and muscles that serve an important role in providing afferent information regarding head
172 position is disrupted. Furthermore, injury may change the contraction dynamics of the cervical
173 musculature(9)and further increase the burden on impaired central control mechanisms.

174 Psychogenic factors are both plausible and a likely contributor to diminished head
175 movement excursion and velocity following concussion. Individuals with psychological trauma
176 resulting from the injurious event or other prior traumatic exposure may demonstrate altered
177 movement strategies. Kinesiophobia, pain, and perceived function have previously been shown
178 to be associated with altered cervical kinematics.(15)

179 To contextualize our results, our data both agree and diverge from previous studies of
180 head movement in patients with post-concussion central vestibular deficit and other studies
181 investigating peripheral vestibular dysfunction. Sessoms and colleagues(7) assessed head
182 kinematics during walking in tactical-athletes with post-concussion vestibular deficit and found
183 asynchrony and large group variability of head position in relation to the pelvic COM. We
184 similarly observed substantially large group variability, a finding likely resulting from
185 heterogeneity of movement strategies employed during walking in the Vestibular group. Mijovic

186 and colleagues(16) studied head movement in individuals with unilateral peripheral vestibular
187 deficit during a 15-meter walking task using movement sensors and found no kinematic
188 differences compared to healthy controls. This is likely a function of severity of impairment,
189 with our sample having substantially higher DHI scores compared to those reported by Mijovic
190 and colleagues.(16) While Pozzo and colleagues(17) found that individuals with bilateral
191 peripheral vestibular deficit demonstrated no significant differences in head motion during
192 walking measured with video analysis, they similarly observed greater variability in movement.
193 Disparity between our findings and those previously reported are likely a function of lesion type
194 and severity of symptoms.

195 4.2 Body mechanics

196 Basford and colleagues(18) studied body COM kinematics in individuals with traumatic
197 brain injury with similar DHI scores and found that body COM excursion and velocity were
198 significantly diminished in the AP and increased in the ML. These findings were attributed to
199 decreased walking velocity and step length,(18) spatiotemporal alterations previously observed
200 in this clinical population.(18,19) The supposition of pelvic excursion as a function of
201 spatiotemporal parameters is supported by our findings. While we similarly saw increased
202 mediolateral and vertical pelvic motion and velocity, we did not observe any differences in
203 anteroposterior parameters. Since gait speed was standardized, the increased mediolateral pelvic
204 excursion was likely attributed to the wider step width, a finding likely attributed to the
205 neurological deficit.

206 The pelvic excursions and velocities observed in our study agree with a few previously-
207 reported findings. Catena and colleagues(20) studied pelvic COM kinematics during over-ground
208 walking in individuals post-concussion and found that pelvic COM velocity were significantly

209 increased in the ML, with significantly lower COM velocity in the AP. They did not find any
210 significant differences in pelvic excursion. (20) In a later study, Catena and colleagues(21) found
211 no significant differences in COM kinematics between post-concussion patients and healthy
212 controls during single-task walking up to 28 days post injury. Parker and colleagues(22) found
213 that while AP displacement and velocity were not significantly different between post-
214 concussion patients and healthy controls up to 28 days following concussion, there was a
215 significantly diminished maximum separation difference between AP COM and center of
216 pressure indicating a more conservative strategy for stability. Reciprocal arm swing has been
217 postulated to be a mass dampener that mitigates trunk torsion and head yaw during walking.(23)
218 While we did not measure upper extremity kinematics, it is plausible that asynchronous arm
219 swing likely contributed to alteration in pelvic and head mechanics in this study.

220

221 4.3 Clinical and research implications

222 Clinical and instrumented measures of head motion during gait may garner additional
223 information regarding central neurological mechanisms and may be an important clinical
224 correlate in the assessment of the balance system during function. Based on heterogeneity of
225 clinical presentation following concussion, diminished head motion may be a useful measure
226 when diagnosing, prognosticating, and guiding treatment in this population. Physical
227 examination should include assessment of cervical motion, cervicogenic dizziness, dynamic
228 visual acuity, gaze stabilization, subjective visual vertical, static balance using the SOT, and gait.
229 Identified deficits to include diminished head kinematics during gait should be addressed during
230 rehabilitation to allow the patient to reach their full potential. Further research is needed to

231 investigate the relationship between head motion and optical tracking and stabilization and how
232 these change in response to vestibular rehabilitation.

233

234 4.4. Limitations

235 There are limitations to this study. This was a cross-sectional study, so cause and effect
236 relations cannot be determined. The study sample consisted of young adult tactical athletes with
237 a high level of physical function prior to injury, hence generalizability is likely limited to
238 individuals of similar age and physical function. Kinematic measurements were focused on
239 assessment of the pelvic and head COM during walking. Three-dimensional kinematic
240 evaluation of head, arm, trunk, and lower extremity kinematics were not possible based on the
241 marker set used in this study. Future study should consider the intersegmental coupling
242 relationships that can further elucidate these findings.

243

244 5. Conclusion

245 Patients with post-concussion vestibular deficit demonstrated a more constrained head
246 and pelvic movement strategy during gait compared with the Control group, a finding that is
247 likely attributed to a neurological impairment of visual-vestibular-somatosensory integration.
248 Clinicians and researchers should consider assessment of head and neck movement during gait
249 following concussion, as this information may provide greater insight to impaired peripheral and
250 central vestibular-visual-somatosensory mechanisms.

251 Role of the funding source: None.

252

253 Declaration of Competing Interest: Authors Jacob VanDehy, Dawn M. Bodell, and Kim R.

254 Gottshall was employed by the company Leidos, Inc. The remaining authors declare that the

255 research was conducted in the absence of any commercial or financial relationships that could be

256 construed as a potential conflict of interests.

257

258 Author contributions: John J. Fraser contributed to study design, data analysis and interpretation,

259 and drafting this manuscript. Jacob VanDehy contributed to data collection and analysis. Dawn

260 M. Bodell contributed to study design, participant recruitment, data collection, and interpretation

261 of findings. Kim R. Gottshall contributed to study design, data interpretation, and drafting this

262 manuscript. Pinata H. Sessoms contributed to study design, procurement of funding, data

263 collection, and data interpretation. All authors have reviewed and approved this manuscript.

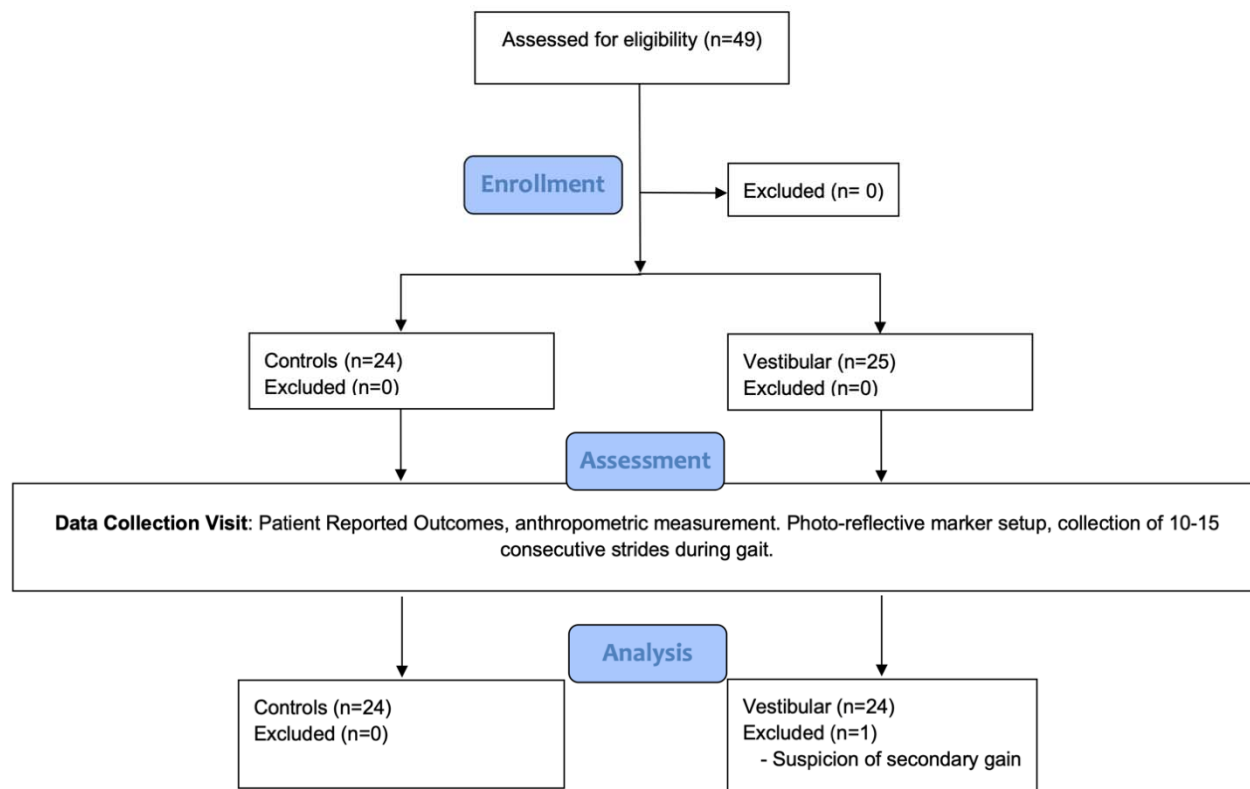
264

265 References

- 266 1. DoD worldwide numbers for TBI. *DVBIC* (2016) Available at: [http://dvbic.dcoe.mil/dod-](http://dvbic.dcoe.mil/dod-worldwide-numbers-tbi)
267 worldwide-numbers-tbi [Accessed December 12, 2017]
- 268 2. Taylor CA. Traumatic brain injury–related emergency department visits, hospitalizations,
269 and deaths — United States, 2007 and 2013. *MMWR Surveill Summ* (2017) **66**:1–16.
270 doi:10.15585/mmwr.ss6609a1
- 271 3. Sosnoff JJ, Broglio SP, Ferrara MS. Cognitive and motor function are associated following
272 mild traumatic brain injury. *Exp Brain Res* (2008) **187**:563–571. doi:10.1007/s00221-008-
273 1324-x
- 274 4. Kolev OI, Sergeeva M. Vestibular disorders following different types of head and neck
275 trauma. *Funct Neurol* (2016) **31**:75–80. doi:10.11138/FNeur/2016.31.2.075
- 276 5. Sosnoff JJ, Broglio SP, Shin S, Ferrara MS. Previous mild traumatic brain injury and
277 postural-control dynamics. *J Athl Train* (2011) **46**:85–91. doi:10.4085/1062-6050-46.1.85
- 278 6. Fino PC, Parrington L, Pitt W, Martini DN, Chesnutt JC, Chou L-S, King LA. Detecting gait
279 abnormalities after concussion or mild traumatic brain injury: A systematic review of
280 single-task, dual-task, and complex gait. *Gait Posture* (2018) **62**:157–166.
281 doi:10.1016/j.gaitpost.2018.03.021
- 282 7. Sessoms PH, Gottshall KR, Sturdy J, Viirre E. Head stabilization measurements as a
283 potential evaluation tool for comparison of persons with TBI and vestibular dysfunction
284 with healthy controls. *Mil Med* (2015) **180**:135–142. doi:10.7205/MILMED-D-14-00386
- 285 8. Pataky TC. One-dimensional statistical parametric mapping in Python. *Comput Methods*
286 *Biomech Biomed Engin* (2012) **15**:295–301. doi:10.1080/10255842.2010.527837
- 287 9. Peng GCY, Hain TC. Predicting vestibular, proprioceptive, and biomechanical control
288 strategies in normal and pathological head movements. *IEEE Trans Biomed Eng* (1999)
289 **46**:1269–80.
- 290 10. Laurens J, Angelaki DE. The functional significance of velocity storage and its dependence
291 on gravity. *Exp Brain Res Exp Hirnforsch Exp Cerebrale* (2011) **210**:407–422.
292 doi:10.1007/s00221-011-2568-4
- 293 11. Goldberg JM, Cullen KE. Vestibular control of the head: possible functions of the
294 vestibulocollic reflex. *Exp Brain Res* (2011) **210**:331–345. doi:10.1007/s00221-011-2611-5
- 295 12. Bisdorff AR, Bronstein AM, Wolsley C, Lees AJ. Torticollis due to disinhibition of the
296 vestibulo-collic reflex in a patient with Steele-Richardson-Olszewski syndrome. *Mov*
297 *Disord* (1997) **12**:328–336. doi:10.1002/mds.870120311

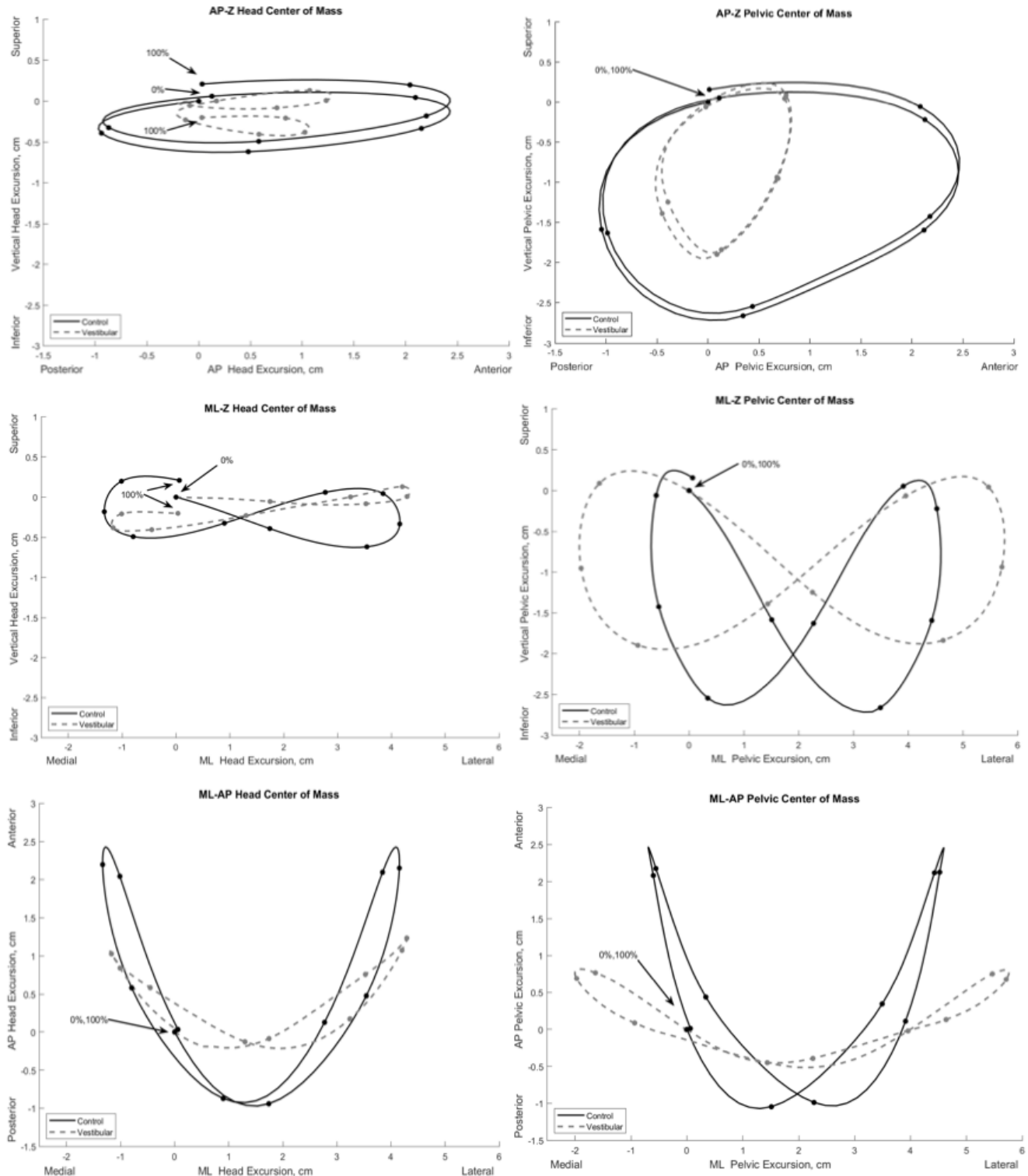
- 298 13. Eckner JT, Oh YK, Joshi MS, Richardson JK, Ashton-Miller JA. Effect of neck muscle
299 strength and anticipatory cervical muscle activation on the kinematic response of the head
300 to impulsive load. *Am J Sports Med* (2014) **42**:566–576. doi:10.1177/0363546513517869
- 301 14. Morin M, Langevin P, Fait P. Cervical spine involvement in mild traumatic brain injury: a
302 review. *J Sports Med* (2016) **2016**: doi:10.1155/2016/1590161
- 303 15. Sarig Bahat H, Weiss PL (Tamar), Sprecher E, Krasovsky A, Laufer Y. Do neck kinematics
304 correlate with pain intensity, neck disability or with fear of motion? *Man Ther* (2014)
305 **19**:252–258. doi:10.1016/j.math.2013.10.006
- 306 16. Mijovic T, Carriot J, Zeitouni A, Cullen KE. Head Movements in Patients with Vestibular
307 Lesion: a Novel Approach to Functional Assessment in Daily Life Setting. *Otol Neurotol*
308 *Off Publ Am Otol Soc Am Neurotol Soc Eur Acad Otol Neurotol* (2014) **35**:e348–e357.
309 doi:10.1097/MAO.0000000000000608
- 310 17. Pozzo T, Berthoz A, Lefort L, Vitte E. Head stabilization during various locomotor tasks in
311 humans. II. Patients with bilateral peripheral vestibular deficits. *Exp Brain Res* (1991)
312 **85**:208–217.
- 313 18. Basford JR, Chou L-S, Kaufman KR, Brey RH, Walker A, Malec JF, Moessner AM, Brown
314 AW. An assessment of gait and balance deficits after traumatic brain injury. *Arch Phys Med*
315 *Rehabil* (2003) **84**:343–349. doi:10.1053/apmr.2003.50034
- 316 19. McFadyen BJ, Swaine B, Dumas D, Durand A. Residual effects of a traumatic brain injury
317 on locomotor capacity: a first study of spatiotemporal patterns during unobstructed and
318 obstructed walking. *J Head Trauma Rehabil* (2003) **18**:512–525.
- 319 20. Catena RD, van Donkelaar P, Chou L-S. Cognitive task effects on gait stability following
320 concussion. *Exp Brain Res* (2007) **176**:23–31. doi:10.1007/s00221-006-0596-2
- 321 21. Catena RD, van Donkelaar P, Chou L-S. Different gait tasks distinguish immediate vs. long-
322 term effects of concussion on balance control. *J NeuroEngineering Rehabil* (2009) **6**:25.
323 doi:10.1186/1743-0003-6-25
- 324 22. Parker TM, Osternig LR, Van Donkelaar P, Chou L-S. Gait Stability following Concussion:
325 *Med Sci Sports Exerc* (2006) **38**:1032–1040. doi:10.1249/01.mss.0000222828.56982.a4
- 326 23. Pontzer H, Holloway JH, Raichlen DA, Lieberman DE. Control and function of arm swing in
327 human walking and running. *J Exp Biol* (2009) **212**:523–534. doi:10.1242/jeb.024927

329 Fig. 1. Study flow diagram.



330
331

332 Fig. 2. Mean three-dimensional excursion of the head and pelvic center of mass during gait in the
333 Vestibular (dashed line) and Control (solid line) groups. Each point on the line depicts 10%
334 increments of the gait cycle starting at initial contact (0%) to ipsilateral initial contact (100%).
335 AP, anteroposterior; ML, mediolateral; Z, vertical.



336 Fig. 3. Group comparison of the head and pelvic center of mass excursion and velocity during
 337 gait. Group means and 95% confidence interval cloud for the Vestibular (grey mean line and
 338 confidence interval cloud) and Control (black mean line and white confidence interval cloud)
 339 groups are depicted. d_{max} , maximum difference between groups; d_{mean} , mean difference between
 340 groups; SPM, Statistical Parametric Mapping.

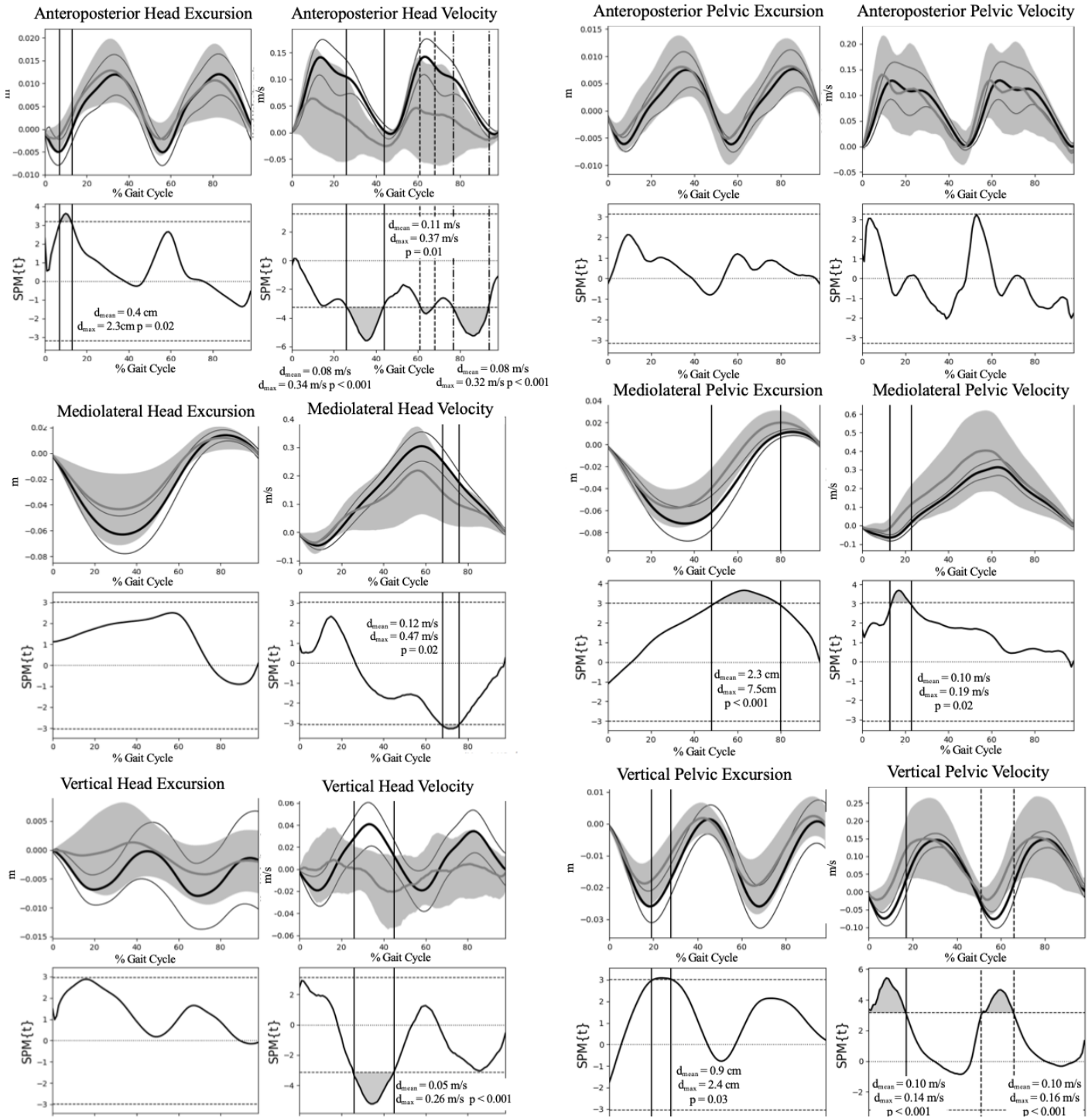
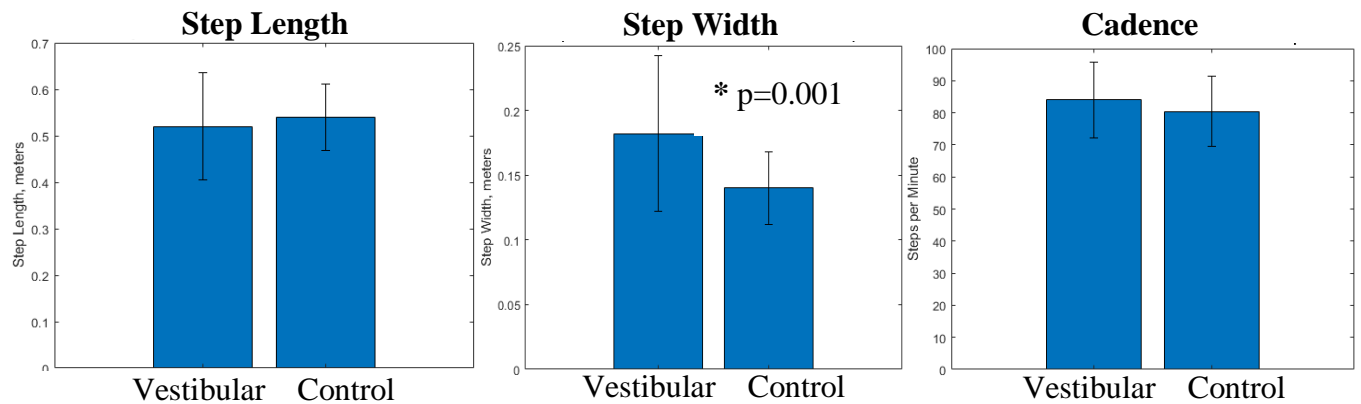


Table 1. Group demographics and spatiotemporal gait characteristics.

	Control (n=24) 20 males, 4 females	Vestibular (n=24) 20 males, 4 females	
	Mean \pm SD		<i>p</i> -value
Age (years)	31.8 \pm 6.4	31.7 \pm 7.9	.68
Height (cm)	175.2 \pm 9.8	174.8 \pm 9.1	.76
Weight (kg)	83.8 \pm 12.4	83.9 \pm 13.8	.96
BMI (kg/m ²)	27.2 \pm 2.6	27.3 \pm 3.3	.84

Gait Measures



* statistically significant. BMI, body mass index; cm, centimeter; kg, kilogram; m, meter; min, minute; s, second.