

Reserved space. Do not place any text in this section. Include the mandatory author checklist or your manuscript will be returned. Use *continuous* line numbering in your manuscript.

1 **Article Summary Line:** University students and co-located non-student residents experienced  
2 asynchronous COVID-19 outbreaks of differing magnitudes indicating limited transmission  
3 between subpopulations

4 **Running Title:** Limited SARS-CoV-2 transmission between subpopulations

5 **Keywords:** COVID-19, Universities, colleges, students, pandemic, incidence, public health

6

7 **Title** Large university with high COVID-19 incidence did not increase risk to non-student  
8 population

9 **Authors:** Nita Bharti, Brian Lambert, Cara Exten, Christina Faust, Matt Ferrari, Anthony  
10 Robinson

11 **Affiliations:** Center for Infectious Disease Dynamics, Department of Biology, Eberly College of  
12 Science, Pennsylvania State University, University Park, PA, USA (N.B., B.L., C.F., M.F.)

13 College of Nursing, Pennsylvania State University, University Park, PA, USA (C.E.)

14 GeoVISTA Center, Department of Geography, College of Earth and Mineral Sciences,

15 Pennsylvania State University, University Park, PA, USA (A.R.)

16 **ORCID iDs:**

17 Nita Bharti <http://orcid.org/0000-0003-1940-7794>

18 Brian Lambert <http://orcid.org/0000-0002-8595-2726>

19 Cara Exten <http://orcid.org/0000-0001-5494-7724>

Reserved space. Do not place any text in this section. Include the mandatory author checklist or your manuscript will be returned. Use *continuous* line numbering in your manuscript.

20 Christina L. Faust <http://orcid.org/0000-0002-8824-7424>

21 Matthew Ferrari <https://orcid.org/0000-0001-5251-8168>

22 Anthony C. Robinson <http://orcid.org/0000-0002-5249-8010>

23 **Abstract—word count 123**

24 Large US colleges and universities that re-opened campuses in the fall of 2020 and the spring of  
25 2021 experienced high per capita rates of COVID-19. Returns to campus were controversial  
26 because they posed a risk to the surrounding communities. A large university in Pennsylvania  
27 that returned to in-person instruction in the fall of 2020 and spring of 2021 reported high  
28 incidence of COVID-19 among students. However, the co-located non-student resident  
29 population in the county experienced fewer COVID-19 cases per capita than reported in  
30 neighboring counties. Activity patterns from mobile devices indicate that the non-student  
31 resident population near the university restricted their movements during the pandemic more  
32 than residents of neighboring counties. Preventing cases in student and non-student populations  
33 requires different, specifically targeted strategies.

34 **Text—word count 2351**

35 **Introduction**

36 Following the WHO's March 2020 official declaration of the COVID-19 pandemic, caused by  
37 the novel SARS-CoV-2 virus (1), most schools and colleges in the US quickly moved to virtual  
38 instruction. To return to campus operations in the fall of 2020, some universities developed  
39 COVID-19 policies including frequent testing, mask mandates, distancing in classrooms, and  
40 hybrid online and in-person instruction plans (2)(3). Other universities pivoted to fully remote

Reserved space. Do not place any text in this section. Include the mandatory author checklist or your manuscript will be returned. Use *continuous* line numbering in your manuscript.

41 learning and did not return to campus (4). The decision to re-open campuses was controversial  
42 because high density student populations would create high-risk transmission situations for  
43 students who returned to campus and have negative impacts on their health. Further, outbreaks in  
44 students populations had the potential to increase incidence in surrounding communities (5)(6).  
45 While individual students could make informed decisions about whether to return to campus  
46 based on their risk tolerance, town residents were forced to accept a changing level of local risk  
47 based on the decisions of others.

48 In Centre County, Pennsylvania, The Pennsylvania State University's (PSU) University Park  
49 (UP) campus returned to campus operations in August 2020. The university offered students  
50 options for virtual, hybrid learning, and in-person classes with physical distancing in classrooms.  
51 Unofficially, the university estimates that about 30,000 undergraduate students returned to the  
52 county for the fall semester of 2020, down from approximately 40,000 in the fall of 2019 due to  
53 the pandemic. The return to campus quickly resulted in a large COVID-19 outbreak among  
54 students (7). We assessed the COVID-19 outbreak in non-student residents in Centre County for  
55 comparison to the outbreaks in the surrounding counties, where large universities are not present.

56 We show that that the timing of the increase in cases among non-student residents of Centre  
57 County during the Fall 2020 term lagged the increase in the student population and that the per  
58 capita cases among non-student residents of Centre County was lower than in surrounding  
59 counties. We then compare activity patterns derived from mobile devices for census block  
60 groups within Centre County where students make up more than half the residents, to non-  
61 student dominated census block groups in Centre County, and to the neighboring counties.

## 62 **Methods**

Reserved space. Do not place any text in this section. Include the mandatory author checklist or your manuscript will be returned. Use *continuous* line numbering in your manuscript.

63 We used publicly available, daily, county-level COVID-19 cases and deaths from the  
64 Pennsylvania Department of Health (PA DOH)  
65 (<https://www.health.pa.gov/topics/disease/coronavirus/pages/cases.aspx>)(8)(9) for Centre County  
66 and the six neighboring counties with which it shares borders: Blair, Clearfield, Clinton,  
67 Huntingdon, Mifflin, and Union (Table 1, Figure 1). Official COVID-19 reporting for these  
68 counties began on March 1, 2020 and is ongoing.

69 Within Centre County, PSU provided COVID-19 testing for UP students from fall 2020 onward  
70 and reported anonymized weekly (2020) and daily (2021) confirmed cases, negative test results,  
71 and total tests completed for each campus in a public dashboard ([https://virusinfo.psu.edu/covid-  
72 19-dashboard/](https://virusinfo.psu.edu/covid-19-dashboard/))(7). Reporting began on August 7, 2020 and is ongoing.

73 At the county level, PA DOH reports the total positive, probable, and negative tests for each  
74 county. Because PSU is within Centre County, we estimated the number of total positive and  
75 negative tests for non-student Centre County residents by subtracting the PSU estimates (from  
76 PSU dashboard) from the Centre County estimates provided by PA DOH. However, not all  
77 student tests were reported to DOH. A portion of the tests conducted for PSU UP students were  
78 completed by a third party vendor, which required student registration. At the time of student  
79 registration, an estimated 0-25% of students registered with an address for a family home that did  
80 not reflect their residence in Centre County. Their test results were reported to the county of their  
81 registered address. This impacts a maximum of 1,166 positive student test results and 10,760  
82 negative student tests. As a result, our estimates of cases and per capita testing among non-  
83 student residents in Centre County are imprecise (Table 1).

84

Reserved space. Do not place any text in this section. Include the mandatory author checklist or your manuscript will be returned. Use *continuous* line numbering in your manuscript.

85 We also used publicly available data from PA DOH data and PSU to calculate COVID-19 deaths  
86 per 100,000 for Centre County, the six neighboring counties, and PSU UP.

87 We acquired county-level data on median household income, population size, and college  
88 enrollment status from the 2019 United Census Bureau’s American Community Survey (ACS) 5-  
89 year data (<https://www.census.gov/data/developers/data-sets/acs-5year.html>) for all seven  
90 previously mentioned counties in central PA (10).

91 We divide the census block groups (CBGs) of Centre County into two categories. We first  
92 designated ‘student-dominated CBGs’ as CBGs where >50% of ACS responses report  
93 enrollment as undergraduate students. We consider data from the 19 student-dominated CBGs in  
94 Centre County to be representative of the student population in Centre County. These 19 CBGs  
95 are either on or adjacent to PSU’s UP campus and occupy exactly 6 census tracts. Then, the  
96 remaining 25 county census tracts were designated as non-student dominated areas.

97 SafeGraph (11) receives geolocation data from anonymized mobile devices collected from  
98 numerous applications. We analyzed SafeGraph’s mobile device-derived daily visit counts to  
99 points of interest (POI), which are fixed locations, such as businesses or attractions. SafeGraph  
100 data provide daily counts for total numbers of visits by mobile devices while using at least one  
101 application that provides geolocation data to SafeGraph. A “visit” indicates that the device  
102 entered the building or spatial perimeter designated as a POI. We acquired daily visit counts for  
103 POIs in the seven previously mentioned counties in central PA from January 1, 2019 forward  
104 (Table 1) and grouped counts into student-dominated CBGs and non-student dominated CBGs  
105 within Centre County. From January 1, 2020 forward, we used SafeGraph data on the median  
106 daily minutes that devices spent outside of their home in each county and the student- and non-

Reserved space. Do not place any text in this section. Include the mandatory author checklist or your manuscript will be returned. Use *continuous* line numbering in your manuscript.

107 student dominated CBG divisions in Centre County. The “home location” of each device is  
108 defined by its location overnight. Finally, we used SafeGraph’s weekly calculated number of  
109 devices residing in each county and the CBG divisions of Centre County for 2019 to measure  
110 SafeGraph’s data representation across the seven counties and the CBGs of Centre County.

## 111 **Results**

112 Seven clustered counties in central Pennsylvania experienced a similar number of COVID-19  
113 cases per capita through March 23, 2021 (Table 1, Figure 1). In Centre County, the epidemic  
114 surged in the student population early in the fall, when students returned to campus in August  
115 2020, and lagged in all neighboring counties. Throughout the fall of 2020, the outbreak in non-  
116 students in Centre County lagged the student outbreak by approximately 7-8 weeks in  
117 cumulative reported cases, despite the non-student population size being over four times greater  
118 than the student population (Figure 1A). Per capita case totals in the student population were  
119 greater than all neighboring counties, including the non-student residents of Centre County  
120 (Figure 1B, Table 1). Per capita COVID-19 cases were lower among the non-student residents of  
121 Centre County than in neighboring counties. Median household income was not correlated to per  
122 capita COVID-19 cases at the county level (Pearson correlation = 0.41). Through March 23,  
123 testing per capita among PSU students was 5.01, higher than any of the seven counties, which  
124 reported per capita testing rates ranging from 0.31 to 0.70 (Table 1). Through March 23, 2021,  
125 the mean number of deaths per 100,000 across these seven counties was 219.77 (range 131.51,  
126 378.17); Centre County, including students and non-students, reported the lowest value. We  
127 subtract the student population and reported student deaths (N=0) from the Centre County totals  
128 and calculate that Centre County non-students experienced 162.02 COVID-19 deaths per  
129 100,000.

Reserved space. Do not place any text in this section. Include the mandatory author checklist or your manuscript will be returned. Use *continuous* line numbering in your manuscript.

130 In 2019, SafeGraph collected data in Centre County on 4,976,706 visit counts to 2,199 points of  
131 interest from a weekly mean of 6,798 mobile devices (range 4,780-8,695). SafeGraph's 2019  
132 mean count of mobile devices residing in each county represents 4% (range 3.4-4.9%) of the  
133 2019 census population of each county. The Pearson correlation between the mean count of  
134 devices residing in a county and 2019 ACS population size of the county was 0.99 for the seven  
135 counties (Table 1, Figure 2A). Some demographic groups are likely better represented among  
136 SafeGraph's mobile device users than others; Centre County's student-dominated CBGs had  
137 greater SafeGraph representation (6%) than any other areas in this study (Table 1, Figure 2A).  
138 SafeGraph representation was not biased by median household income at the county level  
139 (Pearson correlation = -0.20).

140 In 2019, pre-pandemic SafeGraph data showed different daily visit patterns for the student-  
141 dominated CBGs, the rest of Centre County, and the neighboring six counties. The patterns in  
142 Centre County strongly reflected academic semesters and university events. The lowest visit  
143 counts in student CBGs corresponded to university breaks during winter, summer, and spring  
144 while the highest visit counts corresponded to student arrival at the beginning of semesters. This  
145 pattern was not seen in the non-student dominated CBGs of Centre County or in other counties  
146 (Figure S1). Throughout Centre County, the highest visit counts occurred around home football  
147 games, which was not seen in other counties (Figure S1).

148 SafeGraph data showed reductions in daily visits to POI from March 2020 forward across all  
149 seven counties, coinciding with the onset of the pandemic and suggested behavioral restrictions  
150 in central PA (12). During the pandemic, small increases in visits were detectable in Centre  
151 County just before PSU semesters began in August 2020 for the fall term and February 2021 for  
152 the spring term. These increases were driven by the student dominated CBGs of Centre County

Reserved space. Do not place any text in this section. Include the mandatory author checklist or your manuscript will be returned. Use *continuous* line numbering in your manuscript.

153 (Figure 2C). All large university gatherings, intercollegiate athletics, and mid-semester breaks  
154 were cancelled. Visit counts across all of Centre County in 2020 were reduced to 56% of their  
155 2019 values and in the non-student dominated CBGs, 2020 visit counts were 71% of their 2019  
156 values. In the student-dominated CBGs, 2020 visit counts were 35% of their 2019 values.  
157 Unofficial estimates suspected the undergraduate population returning to Centre County for fall  
158 2020 was 75% of its 2019 level, so the smaller population size alone is unlikely to account for  
159 the decline in visit counts. In the neighboring six counties, 2020 visit counts ranged from 81% to  
160 100% of the 2019 values during the fall term period.

161 During the 2020 spring academic semester from Jan 13 to March 6 2020, before the pandemic  
162 restricted movements and impacted behavior in central Pennsylvania, SafeGraph data show  
163 mobile devices in Centre County spent more minutes outside the home than devices in any  
164 neighboring county (Figure 2B). When the fall semester was in session from August 24 to  
165 November 20, 2020 following widespread local pandemic restrictions, the surrounding six  
166 counties showed a mean reduction of 3.6-13% in minutes spent outside the home. For the same  
167 time period, Centre County showed a mean reduction of 43% in non-student CBGs and 49% in  
168 all Centre CBGs in minutes spent outside the home. Mobile devices in Centre County recorded  
169 fewer minutes outside the home than any of the surrounding six counties during the fall of 2020.  
170 Median household income across the seven counties was correlated to the reduction in minutes  
171 spent outside the home between Jan 13 to March 6 2020 and August 24 to November 20, 2020  
172 (Pearson correlation = 0.69) but this relationship was weak when Centre County was removed  
173 from the analysis (Pearson correlation = 0.15).

174 Comparing the fall term of 2020 to the spring term return to campus from February 15 to March  
175 19, 2021, Centre County showed a further 16% reduction in minutes spent outside the home for



Reserved space. Do not place any text in this section. Include the mandatory author checklist or your manuscript will be returned. Use *continuous* line numbering in your manuscript.

176 non-student CBGs and 8% reduction across all Centre CBGs. Comparing across the same time  
177 periods, surrounding counties showed between a 12% decrease and 13% increase in minutes  
178 spent outside the home.

## 179 **Discussion**

180 From March 1, 2020 through March 23, 2021, reported county-level COVID-19 cases per capita  
181 in Centre County and six neighboring counties were similar, despite high per capita cases in PSU  
182 students (1.8-2.8 times the rate in the 6 surrounding counties). Nearly half of the reported cases  
183 from Centre County occurred in university students. The outbreak in students was asynchronous  
184 with the outbreak in non-students in Centre County and led the reported cases in the non-student  
185 residents of Centre County. The outbreak in Centre County's non-students was synchronous with  
186 outbreaks in surrounding counties. After subtracting student cases reported by PSU, Centre  
187 County reported fewer cases per capita than all neighboring counties.

188 Testing per capita was highest for university students, which may have contributed to higher case  
189 detection in students. PA DOH reports showed testing totals were also high for all of Centre  
190 County compared to neighboring counties. While we can't precisely calculate the testing per  
191 capita for non-students in Centre County, the number of COVID-19 deaths per capita would not  
192 be affected by testing rates. Centre County non-students experienced 162.02 COVID-19 deaths  
193 per 100,000, which falls below the mean of 219.77 for these seven counties. This supports the  
194 assertion that Centre County nonstudent residents also experienced fewer cases per capita than  
195 the surrounding counties and the low number of cases per capita was not an artifact caused by  
196 low testing rates.

Reserved space. Do not place any text in this section. Include the mandatory author checklist or your manuscript will be returned. Use *continuous* line numbering in your manuscript.

197 Mobile-device derived data from SafeGraph showed widespread declines in the number of visits  
198 to points of interest (POI) from 2019 to 2020. Centre County recorded greater declines in visit  
199 counts from 2019 to 2020 than the surrounding counties. During the pandemic, individuals  
200 residing in Centre County spent fewer minutes per day outside their homes during university  
201 academic terms than they did for the same time period prior to the pandemic. The decline in  
202 minutes spent outside the home in Centre County was greater than the decline in the neighboring  
203 counties during the pandemic.

204 Despite high incidence of COVID-19 among students in Centre County, the delayed outbreak  
205 progression in non-student residents of Centre County is consistent with the outbreak timing in  
206 neighboring counties, which do not contain large universities. Self-imposed stay-at-home  
207 behaviors among Centre County residents may have limited transmission between students and  
208 non-student residents of Centre County and slowed transmission among non-student residents  
209 (13). Slightly higher median household incomes may have contributed to Centre County  
210 residents' abilities to stay at home during the pandemic more than the residents of neighboring  
211 counties (14). Centre County residents may have also disproportionately adopted suggested  
212 behavioral interventions, including staying home, in reaction to the large outbreak in Centre  
213 County in university students. Ultimately, PSU's return to campus operations did not cause  
214 excess COVID-19 cases per capita in non-student residents around the university but did create a  
215 high risk of infection for students who returned to campus.

216 The primary response to the pandemic through most of 2020 relied on behavioral interventions to  
217 prevent SARS-CoV-2 transmission. Public health recommendations emphasized the protective  
218 effects of mask wearing, hand washing, and staying home. We show that on average, Centre  
219 County residents spent less time outside the home during the pandemic than the residents of the

Reserved space. Do not place any text in this section. Include the mandatory author checklist or your manuscript will be returned. Use *continuous* line numbering in your manuscript.

220 surrounding six counties. Non-student Centre County residents also reported a higher median  
221 household income compared to neighboring counties and students in Centre County, which may  
222 indicate they were more able to quarantine and work from home. Lower wages among students  
223 and in neighboring counties may correspond with higher density housing for students (15) or  
224 jobs that cannot transition to remote work in neighboring counties (16). These factors could  
225 contribute to increased exposure to SARS-CoV-2 due to less time spent at home (17). County  
226 level outbreak prevention and management should consider distinct strategies to meet the  
227 specific needs of sub-populations.

## 228 **Acknowledgments**

229 We acknowledge SafeGraph for access to their mobile device data, the Pennsylvania Department  
230 of Health for making COVID-19 data publicly available at the county level, and The  
231 Pennsylvania State University for making their COVID-19 data publicly available. We  
232 acknowledge financial support from Penn State University's Huck Institutes of the Life Sciences  
233 and the Institute for Computational and Data Sciences. The funding sources had no role in the  
234 study design, execution or interpretation of the results.

## 235 **Conflict of interest**

236 None declared.

## 237 **Data availability and ethics Statement**

238 The datasets used that were freely available in the public domain can be found at the links below:

239 <https://www.health.pa.gov/topics/disease/coronavirus/pages/cases.aspx>;

240 <https://virusinfo.psu.edu/covid-19-dashboard/>; <https://www.census.gov/data/developers/data->

Reserved space. Do not place any text in this section. Include the mandatory author checklist or your manuscript will be returned. Use *continuous* line numbering in your manuscript.

241 [sets/acs-5year.html](https://www.safegraph.com/academic-sets/acs-5year.html). Academic researchers must register to receive access to SafeGraph data at  
242 no charge for non-commercial purposes only here: <https://www.safegraph.com/academics>.  
243 SafeGraph data are anonymized and aggregated.

## 244 **References**

- 245 1. Cucinotta D, Vanelli M. WHO Declares COVID-19 a Pandemic. *Acta Biomed.* 2020;157–  
246 60.
- 247 2. Paltiel AD, Zheng A, Walensky RP. Assessment of SARS-CoV-2 Screening Strategies to  
248 Permit the Safe Reopening of College Campuses in the United States. *JAMA Network*  
249 *Open.* 2020;e2016818–e2016818.
- 250 3. Bradley EH, An M-W, Fox E. Reopening Colleges During the Coronavirus Disease 2019  
251 (COVID-19) Pandemic—One Size Does Not Fit All. *JAMA Network Open.*  
252 2020;e2017838–e2017838.
- 253 4. College Crisis Initiative at Davidson College, *The Chronicle of Higher Education.* C2i  
254 Dashboard for Reopening Plans. 2020.
- 255 5. Leidner AJ, Barry V, Bowen VB, Silver R, Musial T, Kang GJ, et al. Opening of Large  
256 Institutions of Higher Education and County-Level COVID-19 Incidence — United States,  
257 July 6–September 17, 2020. *MMWR Morb Mortal Wkly Rep.* 2021;14–9.
- 258 6. Walke HT, Honein MA, Redfield RR. Preventing and Responding to COVID-19 on  
259 College Campuses. *JAMA.* 2020;1727–8.
- 260 7. The Pennsylvania State University. Penn State COVID-19 Dashboard. COVID-19  
261 Dashboard.
- 262 8. Pennsylvania Department of Health. Pennsylvania National Electronic Disease  
263 Surveillance. Pennsylvania; 2021.
- 264 9. Pennsylvania Department of Health. Pennsylvania National Electronic Disease  
265 Surveillance: COVID-19 deaths by county. 2021.
- 266 10. U.S. Census Bureau. American Community Survey 5-Year Data (2009-2019). 2020.
- 267 11. SafeGraph. San Francisco, CA: SafeGraph; 2021.
- 268 12. Faust C, Lambert B, Kochenour C, Robinson AC, Bharti N. Open access movement data  
269 tracks restriction phases and predicts COVID-19 transmission in a college town. *medRxiv.*  
270 2020.

Reserved space. Do not place any text in this section. Include the mandatory author checklist or your manuscript will be returned. Use *continuous* line numbering in your manuscript.

- 271 13. Lai S, Ruktanonchai NW, Zhou L, Prosper O, Luo W, Floyd JR, et al. Effect of non-  
272 pharmaceutical interventions to contain COVID-19 in China. *Nature*. 2020;410–3.
- 273 14. Valdano E, Lee J, Bansal S, Rubrichi S, Colizza V. Highlighting socio-economic  
274 constraints on mobility reductions during COVID-19 restrictions in France can inform  
275 effective and equitable pandemic response. *Journal of Travel Medicine*. 2021;in press.
- 276 15. Center for Disease Control and Prevention. Considerations for Owners and Operators of  
277 Multifamily Housing Including Populations at Increased Risk for Complications from  
278 COVID-19. 2021.
- 279 16. Dingel JI, Neiman B. How many jobs can be done at home? *J Public Econ*. 2020/07/09 ed.  
280 2020;104235–104235.
- 281 17. Yan Y, Malik AA, Bayham J, Fenichel EP, Couzens C, Omer SB. Measuring voluntary and  
282 policy-induced social distancing behavior during the COVID-19 pandemic. *Proc Natl Acad  
283 Sci USA*. 2021;e2008814118.

284 Address for correspondence: Nita Bharti, Department of Biology, Center for Infectious Disease  
285 Dynamics, W-253 Millennium Science Complex, The Pennsylvania State University, University  
286 Park, PA, USA; email: nita@psu.edu

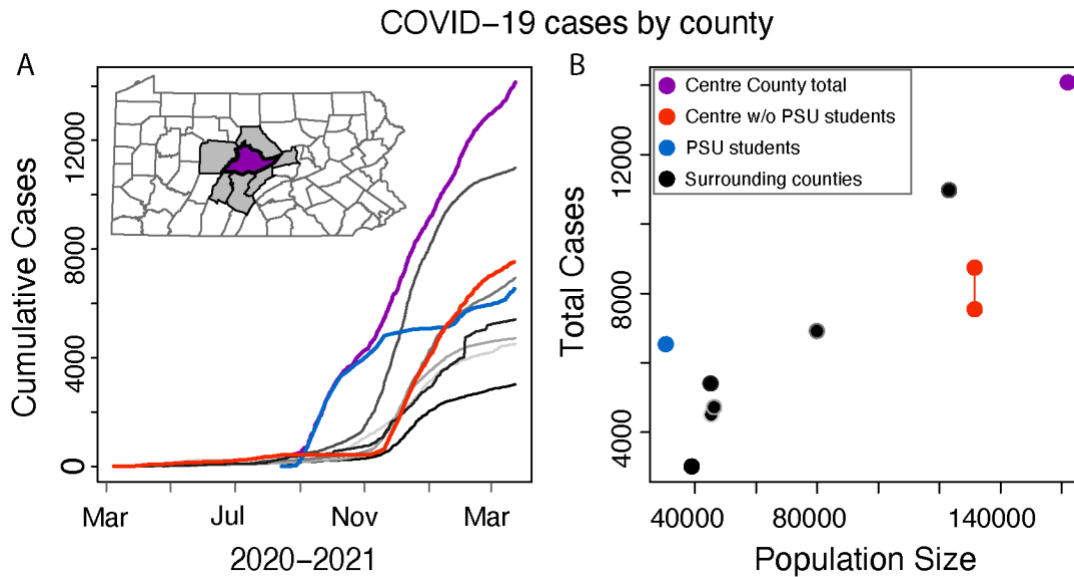
287 Table 1: Summary statistics. COVID-19 reporting, census data, SafeGraph mobile-device  
288 derived data. \*Negative tests for non-students in Centre County cannot be calculated so the  
289 number of tests conducted per capita for non-students is not known.

County	Population size (2019 ACS)	Total cases 3/6/20-3/23/21	Reported cases per capita	Tests per capita (to 3/23/21)	Median household income	2019 devices residing per capita
Blair	123157	10997	0.089	0.38	\$49,181	0.049
Centre all CBGs	161960	14136	0.087	0.48	\$60,403	0.042
Clearfield	79908	6949	0.087	0.33	\$49,015	0.040
Clinton	38915	3017	0.078	0.31	\$50,923	0.044
Huntingdon	45369	4512	0.099	0.41	\$51,678	0.034
Mifflin	46276	4729	0.10	0.39	\$50,219	0.036
Union	45111	5412	0.12	0.70	\$59,399	0.037

Reserved space. Do not place any text in this section. Include the mandatory author checklist or your manuscript will be returned. Use *continuous* line numbering in your manuscript.

Centre non-student-dominated CBGs	131466	7581-8747	0.058-0.067	0.17-0.26	\$63,310	0.038
Centre Student-dominated CBGs	30494	6543 (PSU student tests)	0.21	5.01	\$25,127	0.060

290

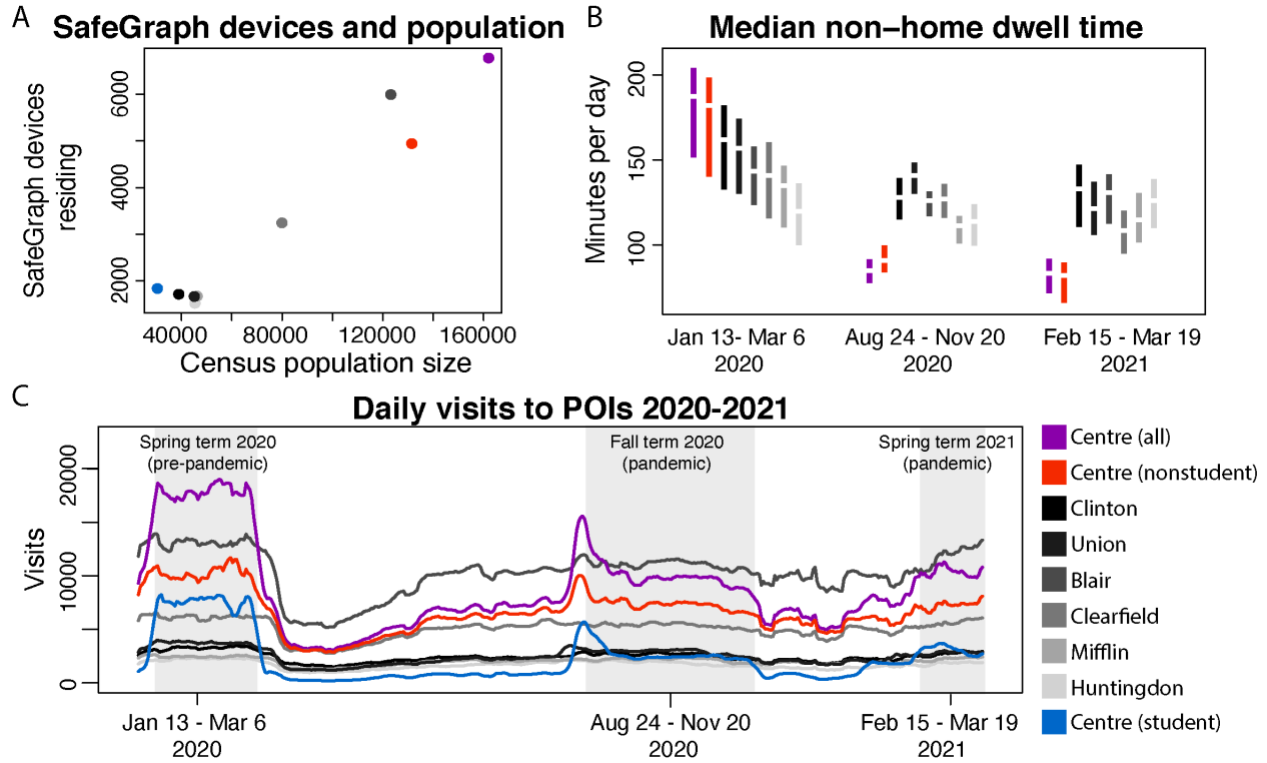


291

292 Figure 1: **A**: The cumulative COVID-case trajectory for Centre County minus the student cases  
 293 (red line) has the same shape as the outbreak for the neighboring counties. When we look at  
 294 student cases only (blue line), the curve leads other counties. Centre County cumulative cases  
 295 including the university (purple line) take on the shape of an early increase because of the  
 296 student cases. **B**: Centre County including PSU student cases (purple dot) reported about the  
 297 number of cases expected for its population size based on the neighboring counties (black dots).  
 298 When we separate the student cases the university reported from the non-student residents of the  
 299 county, Centre County (red dots show possible range of total cases) falls below the number of

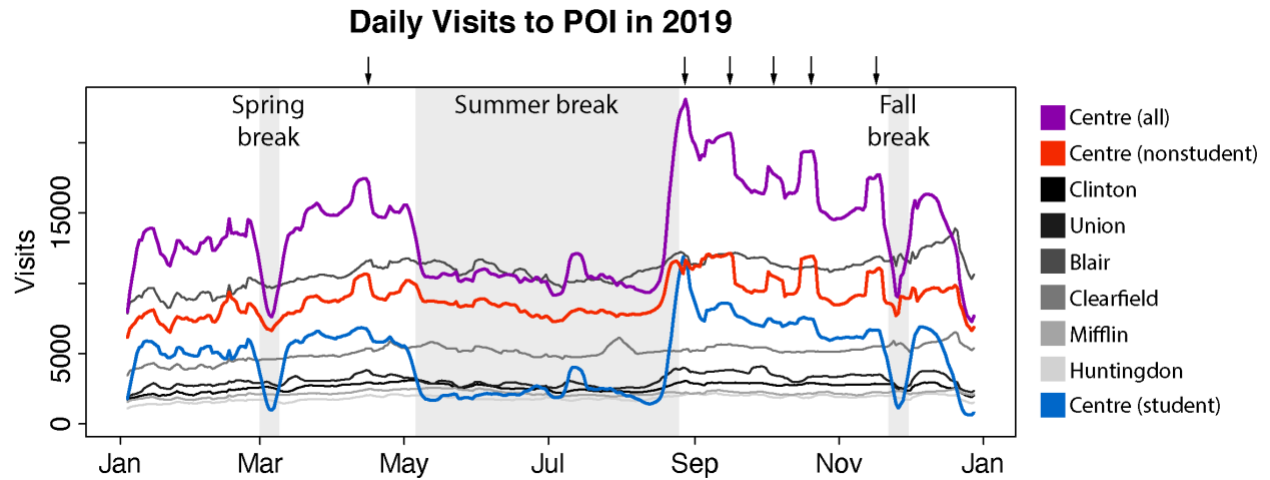
Reserved space. Do not place any text in this section. Include the mandatory author checklist or your manuscript will be returned. Use *continuous* line numbering in your manuscript.

300 cases we would expect for the population size. Student cases only (blue dot) are high for the  
301 student population size.



302  
303 Figure 2: **A:** SafeGraph mean devices per county in 2019 against population size 2019. **B:**  
304 Median daily minutes spent outside the home time per county and non-student and student  
305 dominated CBGs of Centre County. Mean in center and central 50% in colored bars. From left to  
306 right: pre-pandemic, fall term during campus operations, spring term during campus operations.  
307 **C:** Rolling seven day mean of total daily visits to points of interest per county and to student-  
308 non-student dominated CBGs within Centre County. Areas shaded in grey correspond to time  
309 indicated in B. Colors as shown.

Reserved space. Do not place any text in this section. Include the mandatory author checklist or your manuscript will be returned. Use *continuous* line numbering in your manuscript.



310

311 Figure S1: Rolling seven day mean of total daily visits to points of interest per county and  
312 student- and non-student dominated CBGs within Centre County. Areas shaded in grey  
313 correspond to university breaks, arrows correspond to football games and a ticketed spring  
314 scrimmage.