

1 **Clinical Characteristics and Outcomes of Critically Ill Mechanically Ventilated Patients Receiving**
2 **Adjunctive Ketamine for Sedation: an Investigator-Driven, Open-Label, Randomized, Controlled Trial**
3 Marwa Amer ^{a,b*}, Mohammed Bawazeer ^c, Khalid Maghrabi ^{b,c}, Kamel Alshaikh^c, Mohammad Shaban ^c, Muhammad
4 Rizwan ^c, Rashid Amin ^a, Edward De Vol^f, Mawadah Baali^f, Malak Altewerki^d, Fawziah Alkhalidi^e, Sanaa Alenazi^e,
5 Mehreen Bano^e, Mohammed Hijazi ^c **ATTAINMENT Trial investigators**

6 ^a Pharmaceutical Care Division, King Faisal Specialist Hospital and Research Center, Riyadh, Saudi Arabia

7 ^b College of Medicine, Alfaisal University

8 ^c Department of Critical Care Medicine, King Faisal Specialist Hospital and Research Center, Riyadh, Saudi Arabia

9 ^d Department of Neurosciences, Residency Training Program, King Faisal Specialist Hospital and Research Center,
10 Riyadh, Saudi Arabia

11 ^e Departments of Oncology Liver Nursing, King Faisal Specialist Hospital and Research Center, Riyadh, Saudi
12 Arabia

13 ^f Biostatistics, Epidemiology & Scientific Computing Department, King Faisal Specialist Hospital and Research
14 Center, Riyadh, Saudi Arabia

15
16
17 ***Corresponding Authors at:** King Faisal Specialist Hospital & Research Center, Pharmaceutical Care Division
18 (MBC # 11), PO Box 3354, Riyadh, 11211, Tel: +966114647272 Ext 70836 or 48030
19 Email address: mamer@kfshrc.edu.sa

20
21
22
23

24 **Abstract**

25 **Background:** Ketamine has been shown to decrease sedative requirements in intensive care unit (ICU).

26 Randomized trials are lacking on patient-centered outcomes. We aimed to compare the clinical characteristics
27 and outcomes of mechanically ventilated adult ICU patients receiving ketamine as an adjunct analgesedative
28 with those receiving standard of care (SOC) alone. We also described the feasibility during COVID-19 pandemic.

29 **Methods:** In this randomized, open-label trial either ketamine or SOC, in a 1:1 ratio, was administered to
30 patients who were intubated within 24 hours (medical, surgical, or transplant/oncology ICUs), expected to
31 require mechanical ventilation (MV) for the next calendar day, and had the institutional pain and sedation
32 protocol initiated. Ketamine infusion was 2 µg/kg/min on day 1 and 1 µg/kg/min on day 2. The primary outcome
33 was the 28-day MV duration and ventilator-free days as co-primary outcome. Cox-proportional regression
34 analysis was used to assess factors associated with probability for weaning off MV.

35 **Results:** A total of 83 patients (43 in SOC and 40 in ketamine) were included. Demographics were balanced
36 between the groups. The median duration of MV was not significantly different between the groups [median
37 (interquartile range): 7 (3-9.25) for ketamine and 5 (2-8) for SOC, $p=0.15$]. The median ventilation-free days was
38 19 days (IQR 0-24.75) in the ketamine and 19 days (IQR 0-24) in the SOC ($p=0.70$). Surgical and
39 transplant/oncology ICU patients had a higher probability of weaning off MV than those in medical ICU [hazard
40 ratio (95% confidence interval) : 2.09 (1.06–4.14) for surgical ICU, 2.11 (1.02–4.35) for transplant/oncology ICU].
41 More patient was at goal RASS in ketamine compared to SOC. The sedatives and vasopressors cumulative doses
42 were similar between the two arms at 48 hours. We found no difference in 28-day mortality rate, ICU and
43 hospital length of stay, and hemodynamic changes. The consent rate was adequate and the protocol adherence
44 rate was 97.5%.

45 **Conclusions:** Ketamine as an adjunct agent for sedation did not decrease the duration of MV and appeared to
46 be safe, feasible, and effective in subgroups of ICU patients. No effect was noted in sedative and pressors
47 requirements, or on hemodynamics.

48 **Trial registration:** ClinicalTrials.gov: NCT04075006 and current-controlled trials: ISRCTN14730035

49 **Keywords:** ketamine, critical care, sedation, mechanical ventilation, standard of care, ATTAINMENT

50

51

52

53

54

55

56

57

58

59

60

61

62

63

64

65

66

67

68

69

70

71

72 **Introduction**

73 Analgo-sedation or analgesia-first-sedation has gained popularity in recent years ^[1]. This approach has been
74 developed to avoid or decrease the use of sedatives, and facilitate mechanical ventilation (MV) weaning ^[2].
75 Ketamine has gained much interest in recent years in critical care settings because of its unique characteristics
76 ^[3,4]. It acts by inhibiting N-methyl-D-aspartate (NMDA) receptors and the activation of the opioid μ - and κ -
77 receptors. It is an attractive agent in intensive care unit (ICU) because favorable hemodynamic profile, preserves
78 respiratory drive, and does not affect gastric motility ^[5]. Anesthetists have been using ketamine for years for
79 acute and chronic pain, procedural sedation, and rapid sequence intubation. It has been used in postoperative
80 pain control in surgical and trauma patients [as part of multimodal opioid-sparing analgesia in enhanced recovery
81 after surgery (ERAS)], as an analgo-sedative agent in mechanically ventilated patients, status asthmatics, status
82 epilepticus, alcohol withdrawal, and agitation ^[6,7]. Its use has been extended during the coronavirus disease
83 (COVID-19) pandemic due to a shortage of other sedatives. It has been shown to decrease the use of fentanyl,
84 propofol, and dexmedetomidine, and reduce opioid-induced hyperalgesia and opioid tolerance ^[8,9,10,11]. However,
85 the evidence provided in the Pain, Agitation-Sedation, Delirium, Immobility, and Sleep Disruption (PADIS)
86 guideline in support of adjunct ketamine as an analgo-sedative in mechanically ventilated patients was
87 insufficient due to the limited number of randomized controlled trials (RCTs)^[12]. Data on whether ketamine has
88 an effect on patient-centered outcomes and its safety in RCTs, as compared with standard of care (SOC), are
89 unclear. We sought to compare the clinical characteristics and outcomes of Analgo-sedative adjunct keTAmine
90 Infusion iN Mechanically vENTilated ICU patients (ATTAINMENT trial) compared to SOC alone, using a randomized
91 trial design. We also described the feasibility of conducting this trial as a non-pandemic critical care research
92 during the COVID-19 pandemic.

93 **Methods:**

94 The ATTAINMENT trial was registered with ClinicalTrials.gov: NCT04075006, current controlled trials:
95 ISRCTN14730035, and Saudi Food and Drug Authority: SCTR #19063002. The full study protocol has been

96 published previously^[13]. The study was conducted according to the Consolidated Standards of Reporting Trials
97 (CONSORT) guidelines.

98 Design and setting

99 The trial was an investigator-initiated, single-center, prospective, parallel-group, randomized open-label clinical
100 trial. Participants were recruited from the King Faisal Specialist Hospital and Research Center (KFSH&RC). It is
101 located in Riyadh and is a major referral center that provides tertiary and quaternary care, receiving cases from
102 all around the country of Saudi Arabia. The ICU department is composed of several intensive care units (medical,
103 surgical, transplant/oncology). During the COVID-19 pandemic, new units were opened to accommodate the
104 surge of patients. Recruitment began in September 2019 and was completed in November 2020.

105 Participants

106 Patients were eligible for inclusion if they were admitted to any of our three adult ICUs, if MV had been initiated
107 within the previous 24 hours and was expected to continue on the next calendar day, initiated on institutional
108 pain and sedation protocol, and no objection from ICU attending or primary treating team. Patients were
109 excluded if they had a history of dementia or psychiatric disorders, or were comatose on admission due to hepatic
110 encephalopathy. The full inclusion and exclusion criteria are detailed in Supplementary Appendix (**Table S1**).
111 Other exclusion criteria were considered: pulmonary hypertension, tracheostomy at baseline, ketamine
112 administration at baseline prior to randomization, intellectual disability which precluded delirium assessment,
113 transfer from an external hospital, history of substance abuse, and situations where high blood pressure could
114 trigger dangerous complications such as aortic dissection. We also excluded those with repeated ICU admissions
115 within the same hospital visit and those who participated in another interventional trial. We recorded all patients
116 who were eligible but not randomized for any of the following reasons: (1) patient or next of kin declined consent;
117 (2) patient was unable to consent and the next of kin was not available (missing consent); and (3) ICU physician
118 or primary team declined the patient's enrolment.

119

120

121 Ethics approval and consent

122 The study was conducted in accordance with the principles of the Declaration of Helsinki. Our institution's
123 research ethics committee (REC) approved the study through the Research Advisory Council (RAC) number 2191
124 187. Given the need to enroll patients in an expedited manner within the 24 hours window, verbal consent from
125 a guardian/next of kin was allowed and documented in the chart. Written consent was obtained as soon as the
126 next of kin became available. During the COVID-19 pandemic, where patients' family visits were prohibited, we
127 were unable to obtain written consent. Therefore, we granted approval from our research ethics committee for
128 the following consenting process: verbal consent from the family over the phone or a conference call to explain
129 the nature of the study, as detailed in the written informed consent. A witness (not part of this study) was present
130 during the verbal consenting process and documentation was completed in the patient chart.

131 Randomization

132 Patients were randomized in a 1:1 allocation using a computer-generated, pre-determined randomization list
133 created by an independent biostatistician; no stratification was performed. The overall study population included
134 all patients who were enrolled, randomly assigned, and received at least one dose of the study medication,
135 constituting the modified intention-to-treat (mITT) population. Confirmation of the inclusion and exclusion
136 criteria by local principal investigators in an electronic screening form in Research Electronic Data Capture
137 (REDCap). Group allocation was concealed until after randomization. The investigators and all others involved in
138 the trial were masked to the outcome data during the trial. Since this is an open-label study and because of lack
139 of funding, blinding the investigators and the treating team was not possible at this phase. However, patients,
140 and families were unaware of the group assignments.

141 Trial interventions

142 After randomization, both groups were started on the KFSH&RC ICU sedation and analgesia protocol. This is the
143 SOC for all units in our practice. Since it was a nurse-driven protocol, the treating team placed an order regarding
144 the target Richmond Agitation-Sedation Scale (RASS), and the nurse adjusted the infusions of other sedatives
145 according to the protocol. The control group was called SOC and was continued on the sedation protocol only.

146 The intervention group, “The Ketamine group,” was started on ketamine continuous infusion for 48 hours. During
147 the first 24 hours, ketamine was administered at a rate of 2 µg/kg/min (0.12 mg/kg/h). During the following 24
148 hours, ketamine was administered at a rate of 1 µg/kg/min (0.06 mg/kg/h). The infusion was stopped at 48 hours
149 or earlier if sedation was weaned off in preparation for patient extubation. The dose of ketamine was reported
150 in µg per kilogram of actual body weight per min as per institutional practice. When the patient was deemed to
151 be excessively sedated, the other sedatives were held first (or decreased) until the subject reached the team’s
152 desired RASS goal. In situations where excessive sedation persisted, ketamine was discontinued. When the
153 patient was deemed to be agitated, the other sedative rate was increased, and boluses or dexmedetomidine
154 infusion were added, as required. Patients who were mechanically ventilated beyond the 48 hours study drug
155 period were then sedated according to the standard practice of the KFSH&RC ICU.

156 *Standard treatment common to both arms*

157 The other aspects of care, including MV, fluid management, vasopressor use, blood products, enteral nutrition,
158 renal replacement therapy, and early mobilization at the discretion of the treating team, were similar in both the
159 groups. Other ICU supportive measures were applied as appropriate, including prone positioning of patients who
160 met the criteria based on established guidelines for patients with ARDS and venous thromboembolism (VTE)
161 prophylaxis. Septic patients with the expected source of infection were managed according to the latest survival
162 sepsis campaign guidelines. Patient-ventilator asynchrony was systematically assessed and managed through
163 inter-professional collaboration, prioritizing analgesia, and management of MV and respiratory-drive related
164 factors to avoid the unnecessary use of neuromuscular blocking blockers [NMB]. The spontaneous awakening
165 trial (SAT) was assessed every morning with a SAT safety screen, unless the patients were receiving sedative
166 infusion for status epilepticus or undergoing sedative dose escalation due to ongoing agitation, or were started
167 on NMB post randomization. Patients who passed the SAT were immediately managed using the spontaneous
168 breathing trial (SBT) protocol. Both groups received a basic analgesic regimen that included paracetamol and
169 epidural analgesia for hyperthermic intraperitoneal chemotherapy (HIPEC) patients. If delirium treatment was
170 needed, non-pharmacological measures (reassurance or mobilization, and family support) was applied first. If

171 not sufficient, the protocol allowed the use of antipsychotic agents and the decision was left to the ICU attending
172 physician.

173 **Outcomes and Variable Definitions**

174 Clinical

175 The primary outcome was the median duration of MV, with ventilator-free days (VFDs) up to day 28 as the co-
176 primary outcome. This outcome was chosen as patient-centered and highly influenced by mortality^[14]. Duration
177 of MV was recorded as either the number of calendar days from intubation to extubation or until ICU discharge
178 or death, whichever occurred first. Successful extubation was defined as the absence for the need of reintubation
179 within 48 hours. The secondary outcomes included the following up to 28 days: the ICU and hospital length of
180 stay (LOS), mortality rate, and the percentage of participants with adverse events (AEs). We collected the daily
181 cumulative dose of sedatives and analgesics [fentanyl, propofol, midazolam, and dexmedetomidine] and of
182 antipsychotic medications over 48 hours post-randomization. Data only on sedatives administered in the ICU
183 were collected while those given outside the ICU setting during anesthesia or intraoperative management were
184 not collected. The presence of delirium was assessed using the confusion assessment method for the ICU (CAM-
185 ICU), which was measured at baseline and 48 hours post randomization. If the CAM-ICU scores were not
186 available, an electronic progress note was reviewed to detect any evidence of delirium. Hemodynamics changes
187 were assessed until 48 hours after randomization included tachycardia, hypertension, and hypotension.
188 Tachycardia was defined as a heart rate > 130 beats per minute, and hyper or hypotension were classified as
189 systolic blood pressure ≥ 180 mmHg and ≤ 90 mmHg, respectively. Data were stored online in REDCap web
190 application and data quality assessments were executed routinely to ensure completion and accuracy. Details
191 about the variables extracted from the electronic medical record were reported previously [13] .

192 Feasibility and process of care

193 Feasibility was assessed by evaluating the consent rate, recruitment success, and protocol adherence. Consent
194 rate was deemed to be adequate if > 70% of surrogate decision makers (SDMs) or patients chose to participate
195 upon being approached. Successful recruitment was defined as > 3 patients enrolled per month. Protocol

196 adherence was defined as patients receiving ketamine according to the prescribed protocol if they remained
197 ventilated for 48 hours for >75%. This threshold was chosen after examining other pilot studies on complex
198 interventions. We conducted educational sessions for clinicians, nurses, and hospital pharmacies to facilitate the
199 implementation of the protocol ^[9]. Protocol deviation was defined as not starting ketamine immediately after
200 randomization (ideally within 4 hours) due to pharmacy delay or non-placement of the order.

201 **Sample size calculation and Statistical analysis**

202 The study was designed to recruit 40 ketamine-treated and 40 untreated subjects for analysis (i.e., total sample
203 size 80). A statistician blinded to the study group allocation conducted all analyses based on the mITT principle.
204 Based on previous evidence, the median time for extubation for patients with ketamine is 1.44 days (IQR 0.58–
205 2.66) and 2.44 (IQR 1.60 –4.00) for patients without ketamine^[15]. A sample size of 80 was determined to have
206 80% power to detect a clinically meaningful and achievable reduction of one day less in the Ketamine group
207 compared to the SOC, with two sided $\alpha = 0.05$. Extra patients were recruited towards the end of the study to
208 make up for the missing patients. Statistical analyses were performed using R statistical software Version 3.5.0
209 (The R Foundation for Statistical Computing, Vienna, Austria) and SAS/JMP version 15.0 (SAS Institute, Cary, NC).
210 Counts and percentages were used to summarize the distribution of categorical variables. Continuous variables
211 were summarized using either mean \pm standard deviation or the median/interquartile range, based on the results
212 of normality testing (performed using the Shapiro-Wilk test). Histograms were also checked for normality. The
213 chi-square test of independence was used to assess whether the distribution of categorical variables was
214 significantly different between the groups. The unpaired t-test or Mann-Whitney test was used to compare the
215 distribution of normal and non-normal continuous variables. Variables with more than one possible response
216 were dummy coded, and the percentage of each response was calculated from the total sample size. The analysis
217 was performed separately for each response after dummy coding (changing it to yes/no variables). Statistical
218 analysis was performed on VFDs after assigning VFD=0 for patients who died during 28 days and were calculated
219 by subtracting the number of ventilation days from 28.

220 Kaplan-Meier curve with a corresponding log-rank test was used to estimate the probability of weaning-off MV.
221 Patients who were not weaned-off MV during their ICU stay were censored at the last follow-up date. Kaplan-
222 Maier estimates with a corresponding log-rank test were also used to compare the survival probability, hospital
223 and ICU LOS between patients who received ketamine and patients who did not. Patients who alive or stayed in
224 the ICU were censored at the last follow-up date. Cox-proportional regression analysis was used to assess factors
225 associated with probability for weaning off MV and was reported as hazard ratio (HR) and 95% confidence
226 interval (CI). The adjustment of observed effects was undertaken using a list of a priori defined covariates (age,
227 Acute Physiology And Chronic Health Evaluation II (APACHE-II) score, Sequential Organ-Failure Assessment
228 (SOFA) score, comorbidities, and ICU type]. Multivariate logistic regression was used to assess factors associated
229 with all-cause mortality at 28-days with estimated odds ratios (ORs) and 95% CIs. The model was adjusted for
230 age, the APACHE-II score, SOFA score, admission group (medical, surgical, or transplant), infection, metabolic
231 acidosis, urea concentration, and the duration of MV. Backward stepwise logistic regression was used to
232 eliminate variables that were not statistically significant. The likelihood ratio test was also used to assess whether
233 the reduced model was significantly different from the full model (one with all the covariates) . Sensitivity
234 analysis for sedatives and vasopressors requirements excluding patients started on NBM post randomization was
235 conducted. No imputation was done as there were no missing variables.

236 **Study management and data monitoring**

237 We ensured immediate data entry and identified missing data quickly, and issues were resolved in a timely
238 manner. We used random source data verification to monitor data integrity and ensure data fidelity. An
239 independent Research Advisory Council at our institution served as a Data Safety Monitoring Committee (DSMC)
240 and reviewed all adverse events (including all deaths) ^[13].

241 **Results**

242 **Participants**

243 From September 2019 through November 2020, a total of 437 MV patients were screened; 83 patients met the
244 inclusion criteria and 354 were excluded. Among the screened patients, 88 did not meet the eligibility criteria

245 mainly because they were expected to require MV for < 24 hours. Among the included patients, 43 were in the
246 SOC group and 40 were included in the ketamine group in the mITT analysis. The flow of the participants through
247 the trial is shown in **Figure 1**. Other exclusion criteria assessed were pulmonary hypertension (3 patients),
248 tracheostomy at baseline post-face flab or due to subglottic stenosis (11 patients), ketamine at baseline prior to
249 randomization (1 patient), intellectual disability that precluded the delirium assessment (two patients),
250 transferred from an external hospital (two patients), and history of substance abuse (three patients).

251 Overall Characteristics

252 Overall, the median age was 60 years, with a higher proportion of males. About half of the patients were from
253 the medical ICU, 26.5% from the surgical ICU, and 25.3% from the transplant/oncology ICU; median SOFA 8, and
254 APACHE II, 20. The demographic characteristics were balanced between the groups, and the patients were similar
255 in terms of sex, race, and most comorbidities, except for the prevalence of chronic obstructive pulmonary
256 disease, which was higher in patients who receive SOC. We included a wide variety of ICU admission diagnoses
257 and among those randomized to ketamine, 60% had ARDS and about 34% were recipients of solid organ
258 transplant and solid malignancy. Other primary reasons for ICU admission included HIPEC (three patients: two in
259 the ketamine group and one in the SOC group), COVID-19 pneumonia (two patients: one in each arm), Sickle cell
260 disease (one patient in the ketamine arm). Ketamine-treated patients were noted to have higher lactate levels
261 (median 2.2, IQR 1.58-3.4 mmol/L, $p= 0.004$) (**Table 1**). The median number of hours of ICU admission before
262 study enrollment was 13 in SOC (IQR 6, 21.15) and 15 (IQR 12, 21) in ketamine treated patients ($p=0.17$). Post
263 randomization, NMB was initiated in % 12.5 ketamine-treated patients compared to 4.65 % in SOC group.

264 Clinical Outcomes

265 **Primary outcome**

266 The median duration of MV on day 28 was 7 days in the ketamine group (IQR 3-9.25) compared to 5 days in the
267 SOC group (IQR 2-8) (**Table 2**). Among the 83 patients assessed, a similar proportion of patients had come off MV
268 at 28 days: 25 of 40 (62.5%) in the ketamine group and 27 of 43 (62.8%) in the SOC. The distribution of VFDs at
269 day 28 in the ketamine arm was not significantly different compared to the SOC (median 19, IQR: 0–24.75 days

270 vs. median 19, IQR: 0–24 days, respectively; $P = 0.70$). Kaplan-Maier estimates for weaning off MV showed no
271 statistically significant difference in the probability of the weaning off MV between the groups ($P = 0.9$) (**Figure**
272 **2,A**). The Cox-proportional hazard regression model showed that a lower probability of weaning off MV in
273 patients with metabolic acidosis (HR [95% CI]: 0.48, [0.24-0.94], $P = 0.032$), whereas ICU admission for surgical
274 reasons and transplant or oncology reasons was associated with a higher probability of weaning off MV [HR (95%
275 CI): 2.09 (1.06–4.14) for surgical ICU, 2.11 (1.02–4.35) for transplant/oncology ICU] compared to medical
276 admission (**Supplementary table S2**).

277 **Secondary outcomes:**

278 The median RASS in our trial was -2 at baseline, which gradually increased to -1 during 48 hours post
279 randomization indicating light sedation and ability of patients to make eye contact with verbal stimulation. More
280 patient was at goal RASS in 24 and 48 hours in ketamine arm (67.5 % in 24 hours and 73.5 % in 48 hours) compared
281 to SOC (52.4 % in 24 hours and 66.7 % in 48 hours). However, this was not statistically different between groups.
282 In addition, no significant differences were noted in the median pain score throughout the 48 hours interval post-
283 randomization (**Table 2**). There was no difference in the baseline values of other vasopressors and sedative
284 requirements prior to randomization. Ketamine-treated patients were noted to have a higher amount of
285 vasopressin prior to randomization (median 39.6, IQR 30.5-64.2 units, $P = 0.053$). The cumulative doses of
286 fentanyl and other sedatives were similar between the two arms at 48 hours post-randomization. Similar trends
287 were observed with the cumulative dose of vasopressors in mg at 48 hours post-randomization (**table 3**). Box
288 plots were used to visualize the distribution of cumulative doses for various sedatives and vasopressors and
289 available in **Supplementary figure S1, S2**. Sensitivity analysis was conducted on sedative requirements, excluding
290 those started on NMB post-randomization, and the findings were consistent with the primary analysis; no
291 difference was observed between the two arms (**Supplementary table S3**). The median duration of hospital LOS
292 and ICU LOS were comparable between the groups. Kaplan-Maier estimates were used to compare the hospital
293 and ICU LOS between patients and the results showed that the probabilities of ICU discharge and hospital
294 discharge were not significantly different between the groups (**Figure 2,B-C**).

295 **Table 4** illustrates the safety outcome. The proportion of patients who did not completed 48 hours of the trials
296 was significantly different between groups ($P = 0.01$) and was higher in ketamine (37.5%) compared to SOC
297 (11.63%). The main difference was weaning off sedation in preparation of extubation. The prevalence of delirium
298 and hallucinations was higher in patients who received ketamine than those who did not (10% vs. 0%, $P = 0.05$).
299 Thirty-six patients underwent CAM-ICU assessment (43.37 %), of which 2 were positive within 48 hours after
300 randomization. However, this does not translate to either an increased use of antipsychotic agents, which was
301 started in 3 ketamine-treated patients compared to 4 patients in the SOC arm, or increased dexmedetomidine
302 initiation within 48 hours after randomization in the ketamine arm. The rates of re-intubation and tracheostomy
303 28 days post-randomization were not different between the two arms ($P = 0.072$). The median Clinical Pulmonary
304 Infection Score (CPIS used to differentiate secretions caused by patients' underlying lung pathology vs ketamine-
305 associated hypersalivation) within the first 48 hours of randomization was higher in SOC (4, IQR 3 – 6) indicating
306 a higher proportion of patients with ventilator- associated pneumonia, thus, higher frequency of hypersalivation
307 and frequent suctioning in the SOC arm. With regard to the hemodynamic changes in HR and MAP at baseline,
308 24 hours, and 48 hours, we found no statistical difference between the patients randomized to ketamine as
309 compared to SOC (**figure 3**).

310 The 28-day mortality rate was not statistically different between group (**Figure 2, D**). The DSMC reviewed all
311 deaths, and all were determined to have been due to underlying disease, with participation in the trial not being
312 a contributing factor. Multivariate logistic regression was used to assess the factors associated with all-cause
313 mortality at 28-days, showing that higher age was associated with a higher risk of mortality (OR [95% CI]: 1.04,
314 [1.00 – 1.07], $P = 0.04$). Mortality was lower in patients admitted to the surgical ICU than in those admitted to the
315 medical ICU (OR [95% CI]: 0.11, [0.02 – 0.64], $P = 0.016$). None of the remaining factors were associated with 28-
316 days mortality (**Supplementary table S4**).

317

318

319

320 **Feasibility outcomes**

321 The average patients enrollment was 3-4 patients/month. The consent rate was adequate; more than 70% of
322 SDMs or patients when approached for consent chose to participate. The recruitment rate significantly decreased
323 during the COVID-19 pandemic and was withheld for 1 month. We resumed recruitment at a slower rate in March
324 2020, with an average of 1-2 patients/month. In total, 12% of the patients were enrolled outside traditional
325 working hours, that is, on weekends. This process was facilitated through close collaboration with the on-call ICU
326 physician, the research coordinator, and the research investigators. Protocol adherence was 97.5%. and the
327 median hours from consent or enrollment until ketamine started was 4.25 hours [IQR 2.08 - 5.88]. The adherence
328 rate was lower than expected (90%) during the COVID-19 pandemic, and we were able to improve compliance
329 using strategies such as pre-study education sessions for the research and clinical staff and routine clinical
330 reminders, including documentation in the patient's charts.

331

332 **Discussion**

333 Our trial has attempted to quantify the potential vasopressor and opiate-sparing effects of ketamine, as
334 well as assess patient-centered outcomes and feasibility for conducting larger RCTs. We demonstrated that
335 ketamine, as an adjunct in a dose of 1-2 $\mu\text{g}/\text{kg}/\text{min}$ in mechanically ventilated ICU patients, did not decrease the
336 duration of MV and appeared to be safe, feasible, and effective in subgroups of ICU patients. No effect was noted
337 in sedative and vasopressor requirements and there was no impact on hemodynamics. The prevalence of
338 delirium and hallucinations was slightly higher in patients who received ketamine, however, this does not
339 translate to the increased use of antipsychotic or dexmedetomidine initiation, but is more likely attributed to the
340 limited assessment and documentation of CAM-ICU.

341 Data regarding the ideal sedative agent in mechanically ventilated hemodynamically unstable ICU
342 patients are limited. The interest in ketamine's favorable hemodynamic, analgesic, and adverse effect profile has
343 driven providers to pursue its use as analgesedative agent. When compared with other sedatives in the ICU,
344 ketamine has the fastest onset (within 30-40 sec) and a 15 min duration of action. There is an increasing body of

345 literature supporting the use of continuous ketamine infusion. Groetzing et al. evaluated 91 patients who
346 received ketamine at a median dose of 6.8 µg/kg/min (0.41 mg/kg/hours) for a median duration of 2.8 days.
347 Within 24 hours of initiating ketamine, other sedatives were reduced or discontinued in 63% of patients.
348 Additionally, 61% of patients were within the target sedation agitation scale goal after ketamine initiation,
349 compared with 55% of patients prior to ketamine initiation. No adverse events were noted, and no increase in
350 the use of antipsychotic medications was reported ^[16]. Similar results were reported in a study of 104 patients
351 who received ketamine at doses of 5-7 µg/kg/min. At 24 hours after ketamine initiation, there was a 20% relative
352 reduction in the total doses of the analgesic-sedative infusions and the median percent time within the goal RASS
353 improved from 7% to 25% ^[17]. Another study on 36 patients with blunt trauma requiring MV and sedation
354 showed a decrease in the use of other sedatives such as opioids and propofol. However, it was also associated
355 with an increase in the dose of dexmedetomidine used, from 0.7 µg/kg/hr to 0.9 µg/kg/hr (p = 0.002), and
356 ziprasidone, from a median cumulative dose of 120 mg to 220 mg (p = 0.018), to achieve target sedation^[18].
357 Ketamine does not appear to have the potential adverse effects of nonsteroidal anti-inflammatory drugs on the
358 gastrointestinal tract (bleeding) and kidneys (acute kidney injury). Also, in contrast to opioids, ketamine does not
359 have negative effects on the mu receptors of the gastrointestinal tract associated with the ileus. Therefore, it has
360 been used as a multimodal opioid-free analgesic as part of the ERAS protocols ^[19,20,21]. Further studies to control
361 acute pain in traumatic rib fractures of severely injured individuals at sub-anesthetic doses resulted in a reduction
362 of the pain scale score and morphine equivalent dose ^[22,23]. A systematic review and meta-analysis addressed the
363 efficacy and safety of non-opioid adjunctive analgesics for ICU patients. Ketamine resulted in decreased opioid
364 consumption (mean difference, 36.81 mg less; 95% CI, 27.32–46.30 mg less; low certainty). The authors
365 concluded that clinicians should consider using adjunct agents to limit opioid exposure and improve pain scores
366 in critically ill patients ^[24].

367 Most of the previous studies had a limited focus on patient centered outcomes, such as the duration of
368 MV, as the primary outcome favoring surrogate outcomes, such as sedation scores and changes in analgesics and
369 sedatives, leaving a significant knowledge gap, which is reflected by the wide variation in the use of this agent as

370 a sedative agent in ICUs. To the best of our knowledge, our trial was the first and largest RCT on ketamine that
371 reported a patient-centered outcome as the primary outcome and included diverse ICU population. We chose
372 the duration of MV because ketamine preserves pharyngeal and laryngeal protective reflexes, lowers airway
373 resistance, increases lung compliance, and is less likely to cause respiratory depression in low and slow
374 infusions^[4]. In addition, we reported VFDs as a co-primary outcome, which assumes that interventions may
375 shorten ventilator duration, and improve mortality, thereby increasing efficiency as an outcome measure. In our
376 trial, ketamine did not decrease the duration of MV and the median VFDs in our cohort is consistent with the one
377 reported in the MENDS2 sedation trial; adjusted median, 23.7 days in dexmedetomidine vs. 24 days in propofol;
378 OR, 0.96; 95% CI, 0.74 to 1.26)^[25]. This neutral effect on VFDs could be because the majority of our population
379 was from the medical ICU (48.2% of the entire cohort) and had moderate ARDS with a median baseline PaO₂/FiO₂
380 ratio of 152. Patients with ARDS may be under-represented in analgesia/sedation studies, and currently
381 recommended strategies may not be feasible with light sedation. Although we found a high proportion of surgical
382 patients being weaned off MV compared to medical ICU patients, this is because of the patient population nature
383 in the surgical ICU; the majority without respiratory disorders and were admitted for postoperative management.
384 Moreover, by increasing pulmonary airway pressure, there is a theoretical concern that ketamine could aggravate
385 pulmonary hypertension; therefore, it should be used cautiously in patients with this condition.

386 In our trial, ketamine was most commonly used in conjunction with fentanyl and propofol infusions,
387 which aligns with the PADIS guideline recommendations. In our trial, the cumulative doses of fentanyl and other
388 sedatives were similar between the two arms. This could be explained by the fact that the proportion of patients
389 who did not complete 48 hours of the trials was significantly different between groups (P = 0.027) and was higher
390 in patients who received ketamine (37.5%) than in those who did not. This could also be due to starting NMB in
391 5 patients randomized to ketamine compared to 2 patients in the SOC after randomization. In addition, the
392 adherence rate to our protocol and sedative titration was lower than expected (90%) during the COVID-19
393 pandemic, due to staff shortage and re-assignment of ICU nurses to COVID-19 ICUs. Subsequently, newly hired
394 non-ICU nurses were assigned to cover manpower shortages in non-COVID-19 ICUs and could be unaware of the

395 study protocol. Hence, efforts to reduce concomitant sedatives with ketamine may be conservative. For
396 midazolam, two patients who were randomized to ketamine had status epilepticus at baseline, which could
397 explain the higher midazolam requirement in ketamine-treated patients. The findings of our trial are in contrast
398 to the trial by Guillou *et al.* which showed a reduction in opioid consumption with low-dose ketamine infusion
399 for 48 hours ^[26]. However, patients in this trial underwent postoperative abdominal surgery and were able to use
400 patient-controlled analgesia. It is difficult to extrapolate these findings to mechanically ventilated patients who
401 are unable to self-report pain, have a higher severity of illness, and require a deeper level of sedation, as in our
402 trial.

403 Another question to address pertains to ketamine dosing for analgosedation. It is well known that the
404 severity of critical illness influences drug pharmacodynamics and pharmacokinetics ^[27]. Sympathetic
405 overstimulation, hemodynamic instability, and acute septic brain dysfunction negatively affect organ function
406 and thus absorption, distribution, metabolism, and drug dose-response relationships. It is a common finding that
407 severely ill patients need much lower doses of sedatives to maintain deep sedation. Ketamine is highly lipophilic
408 and is metabolized in the liver, generating active compounds (norketamine and hydroxynorketamine), and is
409 eliminated almost entirely in the urine with an elimination half-life of 1.5-3 hours ^[28,29]. Published data for
410 ketamine doses for analgosedative effects showed that it can be safely titrated up to 10-20 µg/kg/min, as needed,
411 to achieve the desired level of analgosedation. We chose ketamine dosing as 1-2 µg/kg/minute because the
412 majority of the ICU population included in our trial was relatively elderly (median age 61 years), with renal and
413 hepatic dysfunction, which potentially alters the metabolism and excretion of ketamine and its active metabolite,
414 resulting in increased sensitivity to continuous infusion ketamine, prolonged duration, drug accumulation, and a
415 longer recovery process. Moreover, the dose described in this trial is in agreement with the existing literature
416 describing the light sedation strategy and 2018 PADIS guideline recommendations ^[1,13]. This regimen is more
417 conservative to minimize dose-related reactions, such as psychotomimetic episodes, that could lead to complex
418 differential diagnoses in ICU patients who are prone to delirium and other CNS disturbances. We also did not
419 observe notable severe confusion, nightmares, or emergence phenomena associated with ketamine use, which

420 is consistent with the findings reported by Perbert et al. ^[30]. A retrospective cohort study evaluating the effect
421 of ketamine versus non-ketamine-based sedation on delirium and coma in the ICU showed similar rates of
422 delirium- and coma-free days in both groups ($p = 0.25$ and $p = 0.51$, respectively)^[31]. Ketamine at these lower
423 doses ($< 5 \mu\text{g} / \text{kg} / \text{min}$) does not appear to induce psychomimetic adverse effects that have been observed when
424 using higher doses ($>10 \mu\text{g} / \text{kg} / \text{min}$). Although the mechanism is not completely clear, it has been hypothesized
425 that the neurochemical basis for psychomimetic effects may be related to ketamine losing receptor selectivity at
426 higher doses, leading to the depression of auditory and visual relay nuclei.

427 Ketamine itself has a sympathomimetic effect and can cause hypertension and tachycardia by acting as
428 a catecholamine re-uptake inhibitor and has a negative inotropic effect. However, in a subgroup of patients,
429 especially in the catecholamine-depleted state, it can sometimes cause hemodynamic compromise and
430 hypotension^[32]. It is best avoided in patients with a history of ischemic cardiac disease, hypertensive crisis or
431 heart failure due to decreased cardiac index, increased pulmonary capillary wedge pressure, increased systemic
432 vascular resistance, and myocardial depressant effect ^[33]. In our trial, we excluded patients with cardiogenic
433 shock due to potential harm. Moreover, the addition of ketamine did not lower the vasopressor requirements,
434 and not associated with clinically significant hemodynamic changes and appeared to be safe. We hypothesized
435 that ketamine did not lower vasopressor requirements due to the lack of difference in dosing requirements of
436 hemodynamic-altering sedative agents. In addition, ketamine-treated patients were sicker at baseline evident by
437 higher lactate levels and higher vasopressin dose at baseline.

438 We noticed that the 28-day mortality rate in our cohort was 30.1% (32.6% in the SOC compared with
439 27.5% in ketamine treated patients), which is slightly higher than the mortality rate reported in old sedation
440 trials; in the MIDEX trial, 21.1% midazolam patients and 27.3% dexmedetomidine patients died between
441 randomization and follow-up at day 45, and in the PRODEX trial, 19.4% propofol patients and 17.1%
442 dexmedetomidine patients died ^[34]. This was expected because we are a tertiary care hospital. Therefore, it is
443 likely that our patients were sicker. The APACHE II and SOFA scores also suggest that these data were derived
444 from a cohort of critically ill patients. This is comparable to the mortality rate in patients admitted to the ICU with

445 severe sepsis and shock ^[35,36] and to the 90 day all-cause mortality rate reported in more recent sedation trials
446 such as the SPICE III trial, which showed 29.1% in both the dexmedetomidine and usual-care groups, and the
447 MENDS 2 trial, with 38% in the dexmedetomidine group vs. 39% propofol (HR, 1.06; 95% CI, 0.74 to 1.52) ^[25,37].

448 Even during the COVID-19 pandemic, we successfully completed the trial enrollment assessing the
449 feasibility of conducting a larger multicenter trial. Achieving our threshold of recruitment and consent rate
450 demonstrated that the trial is acceptable to patients, families, and clinicians. The major barriers faced were
451 difficulties in continuing under lockdown conditions, infected research staff, shifting the staff to cover COVID-19
452 areas, and reorientation in clinical trial research towards COVID-19. We demonstrated that ketamine appears to
453 be safe, and effective in subgroups of ICU patients, and may be considered as an alternative analgosedative
454 agent. This is particularly important during the COVID-19 era, when the limited availability of many commonly
455 used agents and medication shortages have necessitated the development of alternative strategies to keep
456 patients on MV comfortable and synchronous^[38]. Moreover, ketamine has several advantages over fentanyl. It
457 has not been associated with chest wall rigidity precipitating insufficient ventilation, which has occasionally been
458 described with fentanyl ^[39]. Additionally, propofol and dexmedetomidine associated-hypotension may
459 necessitate the vasopressor support which may exclude patients from qualifying for COVID-19 antiviral
460 medication (remdesivir), making ketamine an attractive alternative in those populations ^[40].

461 This study had several strengths. Firstly, it analyzed robust patient-centered outcomes, high rates of
462 completed follow-up, and comprehensive assessments of AEs associated with ketamine use and its impact on
463 hemodynamic response. We believe that our results provide incremental value in understanding the effects of
464 ketamine. Randomization, blinded study statistician, and adherence to the mITT principle limit the potential
465 sources of bias. Moreover, our trial included diverse ICU populations from the medical, surgical,
466 transplant/oncology ICU, which potentially increased the trial generalizability and external validity. We also made
467 every effort to include eligible patients within a narrow randomization window (within 24 hours of intubation)
468 to eliminate potential confounders with other co-interventions.

469 Despite these strengths, we acknowledge the limitations of our trial. Although we enrolled our target
470 sample size, it was small. Since it was a single center-study, the trial may not statistically powered enough to
471 show a difference in MV duration or mortality between the trial groups. Moreover, we excluded neuro patients,
472 such as those with severe traumatic brain injury (TBI) and hydrocephalus, which may limit the generalizability to
473 the neurocritical care ICU patients. However, more recent systematic reviews of heterogeneous acute brain
474 populations (subarachnoid hemorrhage, tumors, TBI) have concluded that ketamine causes only temporary
475 changes in intracranial pressure without modifying cerebral perfusion pressure, and has no detrimental effect on
476 ICU stay, outcomes, or mortality^[41]. Furthermore, we did not collect detailed data on the frequency and duration
477 of prone positioning for the ARDS patients who were made prone, or the median change in the PaO₂/FiO₂ ratio
478 post randomization, limiting the determination of the real benefit of ketamine in oxygenation post-
479 randomization. Although we made efforts to validate the diagnosis of delirium and delirium assessment with the
480 CAM-ICU, we had a large proportion of patients (56.6 %) with un-assessed CAM-ICU, leaving a knowledge gap to
481 be addressed by future trials. Finally, while all patients in our cohort were followed-up for 28 days, additional
482 follow-up will be valuable to determine the full course of hospitalization and to characterize the long-term
483 sequelae for survivors. Furthermore, the ketamine duration was limited to 48 hours and a longer duration with
484 different ketamine dosing needs to be investigated by future multicenter trials.

485 Future studies should capture MV settings after randomization, co-interventions including, the use of
486 bicarbonate, corticosteroids, prone position, and diuretics. Future studies should also consider looking at the
487 analgesedative effect of ketamine in COVID-19 and neurocritical care ICUs. It was hypothesized that the anti-
488 inflammatory effect of ketamine may have a beneficial effects in COVID-19 patients with pro-inflammatory
489 activity compared to other sedatives. Finally, ketamine is not an expensive drug. Currently, no studies have
490 evaluated the cost-effectiveness of ketamine in the management of sedation and analgesia and this should be
491 considered in future studies.

492

493

494 **Conclusions**

495 Ketamine has been shown to be an attractive option for analgosedation. In our trial, ketamine did not decrease
496 the duration of MV and appeared to be safe, feasible, and effective in subgroups of ICU patients. No effect was
497 noted in sedative and pressor requirements and there was no negative impact on hemodynamics. However, this
498 trial is not sufficiently powered to show a difference in important clinical outcomes, precluding definitive
499 conclusions. While these data are encouraging and can help reform clinical practice, results from larger
500 multicenter trials are awaited to shed light on the remaining questions and further investigate the association
501 with patient-centered outcomes. Additional data are needed to further elucidate the role of ketamine in COVID-
502 19 patients and as an alternative when resources are low and there is a shortage of essential sedative agents.

503

504

505 **List of Abbreviations**

506 Acute Physiology and Chronic Health Evaluation II, APACHE II; Clinical Research Committee, CRC; Confusion
507 Assessment Method for the ICU, CAM-ICU; Do-not-resuscitate, DNR; Extracorporeal membrane oxygenation,
508 ECMO; Heart rate, HR; Intensive care unit, ICU; Interquartile range, IQR; Institutional Review Board, IRB; King
509 Faisal Specialist Hospital and Research Centre, KFSH&RC; Length of stay, LOS; Mechanical ventilation, MV;
510 Office of Research Affair, ORA; Pain, Agitation, Sedation, Delirium, Immobility, and Sleep, PADIS; Randomized
511 controlled trial, RCT; Ratio of the partial pressure of arterial oxygen to the fraction of inspired oxygen, PF ratio;
512 Research Ethics Committee, REC; Research Electronic Data Capture, REDCap; Richmond Agitation-Sedation
513 Scale, RASS; Sequential Organ Failure Assessment, SOFA; Spontaneous awakening trial, SAT; Spontaneous
514 breathing trial, SBT; Systolic blood pressure, SBP

515

516

517

518

519 **Tables**

520 **Table 1: Demographic and baseline characteristics**

521 **Table legend:** Data presented as n (%), mean \pm sd, or median (interquartile range). SOC donates to standard
522 of care

523 ¶ The Sequential Organ Failure Assessment (SOFA) is used to track organ failure in the ICU; scores range from
524 0 to 24, with higher scores indicating greater severity of illness

525 **The Acute Physiology and Chronic Health Evaluation (APACHE II) assesses the risk of death on a scale from
526 0 to 71, with higher scores indicating a higher risk of death.

527 † PRE-DELIRIC is a delirium prediction 24 hours after ICU admission to predict the chance to develop a delirium
528 episode during the ICU stay.

529 Abbreviations: AC, assist-control mode; ABG, arterial blood gas; APACHE II, Acute Physiology And Chronic
530 Health Evaluation II; COPD, chronic obstructive pulmonary disease; CKD, chronic kidney disease; CVVH,
531 continuous veno-venous hemofiltration; CVVHDF, Continuous veno-venous hemodiafiltration; FiO₂, fraction
532 of inspired oxygen; HR, heart rate; HIV/AIDS, Human immunodeficiency virus infection and acquired
533 immunodeficiency syndrome; HSCT, hematopoietic stem-cell transplantation; IQR interquartile range; IHD,
534 intermittent hemodialysis; MAP, mean arterial pressure; RRT, renal replacement therapy; PaO₂, partial
535 pressure of oxygen; PCO₂, partial pressure of carbon dioxide; PCV, pressure control ventilation; PS, pressure
536 support; PRVC, pressure-regulated volume control; SIMV, Synchronized intermittent mandatory ventilation;
537 SOFA, Sequential Organ Failure Assessment

538 **Table 2: Efficacy outcomes**

539 **Table 2 legend:** Data presented as n (%), mean \pm sd, or median (interquartile range). SOC donates to standard
540 of care

541 † 53 patients (26 SOC and 27 ketamine) were alive and zero VFD was assigned for patients who died within 28
542 days

543 * The RASS measures levels of consciousness (scores range from -5 [unresponsive] to +4 [combative]) .
544 Assessed in 82 patients at 24 hours (42 SOC and 40 ketamine-treated)

545 § The RASS was assessed in 73 patients at 48 hours (39 SOC and 34 in ketamine-treated)

546 ¶ Assessment of pain was done by Critical Care Pain Observation Tool for pain (CPOT) by evaluating facial
547 expression, body movement, muscle tension, and adherence to use of the ventilator if intubated or
548 vocalization if extubated. Total scores range from 0 to 8, with scores higher than 2 indicating the presence of
549 pain.

550 Abbreviations: MV, mechanical ventilation; RASS, Richmond Agitation and Sedation

551 **Table 3: Sedatives and vasopressors requirements**

552 **Table 3 legend:** Data presented as n (%), mean \pm sd, or median (interquartile range). SOC denotes to standard
553 of care

554 *The RASS measures levels of consciousness (scores range from -5 [unresponsive] to +4 [combative])

555 ¶ Assessment of pain was done by Critical Care Pain Observation Tool for pain (CPOT) by evaluating facial
556 expression, body movement, muscle tension, and adherence to use of the ventilator if intubated or
557 vocalization if extubated. Total scores range from 0 to 8, with scores higher than 2 indicating the presence of
558 pain.

559 † The CAM-ICU, scores delirium as either present [positive] or not present [negative]. Assessments was done
560 when the patient was maximally awake.

561 Abbreviation: CAM-ICU, Confusion Assessment Method for the ICU; RASS, Richmond Agitation and Sedation
562 Scale.

563 **Table 4: Safety outcomes**

564 Data presented as n (%), mean \pm sd, or median (interquartile range). SOC denotes to standard of care

565 ¶ Assessed in 20 patients (5 SOC and 15 ketamine-treated)

566 † CPIS score used to differentiate secretions caused by patients' underlying lung pathology (ventilator-
567 associated pneumonia [VAP]) vs ketamine-associated hypersalivation. Likelihood of VAP does seem to be
568 somewhat higher when scores are >6

569 Abbreviations: CAM-ICU, Confusion Assessment Method for the ICU; CPIS, Clinical Pulmonary Infection
570 Score; HR, heart rate; MAP, mean arterial pressure; RASS, Richmond Agitation and Sedation Scale

571 **Figures**

572 **Figure 1: Study Flow Chart**

573 Figure Caption: ¶ deemed to be extubatable post randomization

574 Abbreviations: ESLD, end stage liver diseases; HR, heart rate; SBP, systolic blood pressure; ECMO,
575 Extracorporeal membrane oxygenation; DNR, do-not-resuscitate

576 **Figure 2: Time to event and Kaplan-Maier Curves**

577 **Figure caption:** Panel A for duration of mechanical ventilation; Panel B represents the overall ICU length of
578 stay (days); Panel C represents the overall hospital length of stay (days); Panel D represents 28-day
579 mortality. Red line represents the standard of care group and blue line represents the ketamine group.
580 Confidence interval was illustrated as a band around the time-to-event curves. SOC denotes to standard of
581 care

582 **Figure 3. HR and MAP at baseline, 24 hours, and 48 hours**

583 SOC denotes to standard of care. The middle black line is the median. The lower and upper lines of the box
584 are the 25th and 75th percentile, respectively. Check this image. The lower and upper lines represent that
585 percentile multiplied by 1.5 the Interquartile range

586 Abbreviation: HR, heart rate; MAP, mean arterial pressure

587 **Supplemental Digital Content**

588 **Table S1: Full inclusion and exclusion criteria**

589 **Table S2. Cox-proportional regression analysis for weaning-off mechanical ventilation**

590 Table legend: Abbreviation: APACHE II, Acute Physiology and Chronic Health Evaluation II; SOFA, Sequential
591 Organ Failure Assessment; HR : hazard ratio; CI: confidence interval

592 **Figure S1. Box plots for cumulative doses of sedatives at 48 hours post-randomization**

593 SOC donates to standard of care

594 **Figure S2. Box plots for cumulative doses of vasopressors at 48 hours post-randomization**

595 SOC donates to standard of care

596 **Table S3: Sensitivity analysis for sedatives and vasopressors requirements excluding patients started on**
597 **atracurium post randomization**

598 Data presented as n (%), mean \pm sd, or median (interquartile range). SOC donates to standard of care

599 **Table S4. Factors associated with mortality at 28 days**

600 Table legend: Abbreviation: APACHE II, Acute Physiology and Chronic Health Evaluation II; SOFA, Sequential
601 Organ Failure Assessment; OR : Odds Ratio; CI: confidence interval.

602

603 **Consent for publication**

604 Not Applicable

605 **Availability of data and material**

606 The datasets used and analyzed during the current report are available from the corresponding author on
607 reasonable request.

608 **Competing interest**

609 The authors declare that they have no conflicts of interest

610 **Funding**

611 This trial was investigator-initiated and all study authors are employees at King Faisal Specialist Hospital and
612 Research Center (KFSH&RC), which has not provided any research grant for this particular project. All authors
613 volunteered their time and used local resources to conduct the study.

614 **Authors' contributions**

615 MB and MA: Conception and design, analytical plan, drafting of the manuscript, critical revision of the manuscript
616 for important intellectual content, trial registration at Saudi FDA and clinicaltrials.gov, and approval of the final
617 version to be published. KM, MH, RA, MR, KA, MS: acquisition, analysis, and interpretation of data, critical revision
618 of the manuscript for important intellectual content, and approval of the final version to be published. ED: sample
619 size calculation, analysis, and interpretation of data, assisted in submitting the documents to the Saudi FDA, and
620 approved the final version to be published. M Altewerki, F Alkhalidi, S Alenazi, M Bano: acquisition and data
621 collection, research coordinators, review final version to be published. We confirmed that the authorship followed
622 the uniform requirements for manuscripts submitted to biomedical journals.

623 **Authors' information:**

624 MA: PharmD; BCPS, BCCCP; Critical Care Pharmacy Consultant; Medical and Surgical ICU; Adjunct Assistant
625 Professor- Alfaisal University; Pharmaceutical Care Division (MBC 11); King Faisal Specialist Hospital & Research
626 Center PO Box 3354, Riyadh 11211, Tel: +966114647272 Ext 70836.

627 MB: MD, FRCSC, FACS, Consultant Trauma and Acute Care Surgery, Critical Care Medicine, Department of Critical
628 Care Medicine (MBC 94), King Faisal Specialist Hospital & Research Centre, P. O. Box 3354, Riyadh 11211, Tel:
629 +966-11-216-2919, Ext: 24731

630 KM: MD, FCCP, MRCP (UK), Chairman and Consultant Intensivist, Department of Critical Care Medicine (MBC 94),
631 King Faisal Specialist Hospital & Research Centre, P. O. Box 3354, Riyadh 11211, Tel: +966-11-442-4731.

632 MH: MD, FACP, FCCP, Consultant Intensivist, Department of Critical Care Medicine (MBC 94), King Faisal Specialist
633 Hospital & Research Centre, P. O. Box 3354, Riyadh 11211, Tel: +966-11-464-7272 Ext 37165.

634 RA: PharmD, BCPS, BCCCP, critical care pharmacy specialist, medical and surgical ICU, pharmaceutical care division
635 (MBC 11), King Faisal Specialist Hospital & Research Center, PO Box 3354, Riyadh 11211.

636 MS: MD, Assistant consultant Department of Critical Care Medicine (MBC 94), King Faisal Specialist Hospital &
637 Research Centre, P. O. Box 3354, Riyadh 11211, Tel: +966-11-464-7272 Ext 37165.

638 KA: MD, Assistant consultant, Department of Critical Care Medicine (MBC 94), King Faisal Specialist Hospital &
639 Research Centre, P. O. Box 3354, Riyadh 11211, Tel: +966-11-464-7272 Ext 37165.

640 MR: MD, Assistant consultant, Department of Critical Care Medicine (MBC 94), King Faisal Specialist Hospital &
641 Research Centre, P. O. Box 3354, Riyadh 11211, Tel: +966-11-464-7272 Ext 37165.

642 ED: Chairman of Biostatistics and Epidemiology, Department of Biostats and Epidemiology, King Faisal Specialist
643 Hospital & Research Centre, P.O Box 3354, Riyadh 11211, Tel: +966-11-464-7272 Ext 32504.

644 M Altwerki: Neurology Resident, Department of Neurosciences, Residency Training Program, King Faisal
645 Specialist Hospital and Research Center, Riyadh, Saudi Arabia

646 F Alkhaldi, S Alenazi, M Bano: staff nurse I, Department of Oncology Liver Nursing, King Faisal Specialist Hospital
647 and Research Center, Riyadh, Saudi Arabia

648 **Acknowledgments**

649 We thank the ICU physicians, ICU nurses, ICU respiratory therapists, ICU physiotherapists, ICU satellite
650 pharmacists, and ICU clinical pharmacists of KFSH&RC for their efforts to save the lives of ICU patients and their
651 bravery in fighting against the COVID-19 pandemic. We also thank the Saudi Critical Care Trials Group for providing
652 feedback on the study proposal and the participants and their families. Without their collective generosity, this
653 trial would not have been possible.

654

655 **References**

¹ Devlin JW, Skrobik Y, Gélinas C, Needham DM, Slooter AJC, Pandharipande PP, et al. Clinical practice guidelines for the prevention and management of pain, agitation/sedation, delirium, immobility, and sleep disruption in adult patients in the ICU. *Crit Care Med*. 2018;46(9):e825-e873.

² Shah FA, Girard TD, Yende S. Limiting sedation for patients with acute respiratory distress syndrome - time to wake up. *Curr Opin Crit Care*. 2017;23(1):45-51.

-
- ³ Whitman CB, Rhodes H, Tellow BR, Hampton NB. Continuous infusion of Ketamine for adjunctive sedation in medical intensive care unit: a case series. *J Anesthesiology Critical care Medicine* 2015;2(5):1-5.
- ⁴ Wieruszewski PM, Leung JG, Nelson S. Ketamine Use in the Intensive Care Unit. *AACN Adv Crit Care*. 2018;29(2):101-6.
- ⁵ Hanidziar D, Bittner EA. Sedation of Mechanically Ventilated COVID-19 patients: Challenges and Special Considerations. *Anesth Analg*. 2020;13(1):e40-e41.
- ⁶ Hurth KP, Jaworski A, Thomas KB, Kirsch WB, Rudoni MA, Wohlfarth KM. The reemergence of ketamine for treatment in critically ill adults. *Crit Care Med*. 2020;48(6):899-911.
- ⁷ Radvansky BM, Shah K, Parikh A, Sifonios AN, Le V, Eloy JD. Role of ketamine in acute postoperative pain management: a narrative review. *Biomed Res Int*. 2015;2015:749837.
- ⁸ Pribish A, Wood N, Kalava A. A review on nonanesthetic uses of ketamine. *Anesthesiol Res Pract*. 2020;2020:5798285.
- ⁹ Adams CD, Altshuler J, Barlow BL, Dixit D, Droege CA, Effendi MK, et al. Analgesia and Sedation Strategies in Mechanically Ventilated Adults with COVID-19. *Pharmacotherapy*. 2020;40(12):1180-91.
- ¹⁰ Erstad BL, Patanwala AE. Ketamine for analgosedation in critically ill patients. *J Crit Care*. 2016;35:145-9.
- ¹¹ Echeverria-Villalobos M, Stoicea N, Todeschini AB, Fiorda-Diaz J, Uribe AA, Weaver T, et al. Enhanced Recovery After Surgery (ERAS): A Perspective Review of Postoperative Pain Management Under ERAS Pathways and Its Role on Opioid Crisis in the United States. *Clin J Pain*. 2020;36(3):219-26.
- ¹² Bawazeer M, Amer M, Maghrabi K, Al-Sheikh K, Amin R, Rizwan M, et al. Adjunctive continuous ketamine infusion to conventional sedation in mechanically ventilated patients: it is time for a randomized trial. *Saudi Crit Care J*. 2020;4(1):5-8.
- ¹³ Bawazeer M, Amer M, Maghrabi K, Alshaikh K, Amin R, Rizwan M, et al. Adjunct low-dose ketamine infusion vs standard of care in mechanically ventilated critically ill patients at a Tertiary Saudi Hospital (ATTAINMENT Trial): study protocol for a randomized, prospective, pilot, feasibility trial. *Trials*. 2020;21(1):288.

-
- ¹⁴ Yehya N, Harhay MO, Curley MAQ, Schoenfeld DA, Reeder RW. Reappraisal of ventilator-free days in critical care research. *Am J Respir Crit Care Med*. 2019;200(7):828–36.
- ¹⁵ Buchheit JL, Yeh DD, Eikermann M, Lin H. Impact of Low-Dose Ketamine on the Usage of Continuous Opioid Infusion for the Treatment of Pain in Adult Mechanically Ventilated Patients in Surgical Intensive Care Units. *J Intensive Care Med*. 2019;34(8):646-51.
- ¹⁶ Groetzing LM, Rivosecchi RM, Bain W, Bahr M, Chin K, McVerry BJ, et al. Ketamine infusion for adjunct sedation in mechanically ventilated patients. *Pharmacotherapy*. 2018;38(2):181-8.
- ¹⁷ Garber PM, Droege CA, Carter KE, Harger NJ, Mueller EW. Continuous infusion ketamine for adjunctive analgesedation in mechanically ventilated, critically ill patients. *Pharmacotherapy*. 2019;39(3):288-96.
- ¹⁸ Pruskowski KA, Harbourt K, Pajoumand M, Chui SJ, Reynolds HN. Impact of ketamine use on adjunctive analgesic and sedative medications in critically ill trauma patients. *Pharmacotherapy*. 2017;37(12):1537-44.
- ¹⁹ Joachimsson PO, Hedstrand U, Eklund A. Low-dose ketamine infusion for analgesia during postoperative ventilator treatment. *Acta Anaesthesiol Scand* 1986;30(8):697–702
- ²⁰ Takieddine SC, Droege CA, Ernst N, Droege ME, Webb M, Branson RD, et al. Ketamine versus hydromorphone patient-controlled analgesia for acute pain in trauma patients. *J Surg Res* 2018; 225:6–14
- ²¹ Zhao H, Yang S, Wang H, Zhang H, An Y. Non-opioid analgesics as adjuvants to opioid for pain management in adult patients in the ICU: A systematic review and meta-analysis. *J Crit Care*. 2019;54:136-44.
- ²² Kugler NW, Carver TW, Juul J, Peppard WJ, Boyle K, Drescher KM, et al. Ketamine infusion for pain control in elderly patients with multiple rib fractures: Results of a randomized controlled trial. *J Trauma Acute Care Surg*. 2019;87(5):1181-8.
- ²³ Carver TW, Kugler NW, Juul J, Peppard WJ, Drescher KM, Somberg LB, et al. Ketamine infusion for pain control in adult patients with multiple rib fractures: Results of a randomized control trial. *J Trauma Acute Care Surg*. 2019;86(2):181-8.
- ²⁴ Wheeler KE, Grilli R, Centofanti JE, Martin J, Gelinas C, Szumita PM, et al. Adjuvant Analgesic Use in the Critically Ill: A Systematic Review and Meta-Analysis. *Crit Care Explor*. 2020;2(7):e0157.

-
- ²⁵ Hughes CG, Mailloux PT, Devlin JW, Swan JT, Sanders RD, Anzueto A, et al. Dexmedetomidine or Propofol for Sedation in Mechanically Ventilated Adults with Sepsis. *N Engl J Med* 2021; doi: 10.1056/NEJMoa2024922
- ²⁶ Guillou N, Tanguy M, Seguin P, Branger B, Campion J, Mallédant Y. The effects of small-dose ketamine on morphine consumption in surgical intensive care unit patients after major abdominal surgery. *Anesth Analg*. 2003;97(3):843–7.
- ²⁷ Power BM, Forbes AM, van Heerden PV, Ilett KF. Pharmacokinetics of drugs used in critically ill adults. *Clin Pharmacokinet* 1998; 34(1):25–56
- ²⁸ Opdenakker O, Vanstraelen A, De Sloovere V, Meyfroidt G. Sedatives in neurocritical care: an update on pharmacological agents and modes of sedation. *Curr Opin Crit Care*. 2019;25(2):97–104
- ²⁹ Zanos P, Moaddel R, Morris PJ, Riggs LM, Highland JN, Georgiou P, et al. Ketamine and ketamine metabolite pharmacology: insights into therapeutic mechanisms. *Pharmacol Rev*.2018;70(3):621–60.
- ³⁰ Perbet S, Verdonk F, Godet T, Jabaudon M, Chartier C, Cayot S, et al. Low doses of ketamine reduce delirium but not opiate consumption in mechanically ventilated and sedated ICU patients: A randomised double-blind control trial. *Anaesth Crit Care Pain Med* 2018; 37(6):589–95
- ³¹ Shurtleff V, Radosevich JJ, Patanwala AE. Comparison of ketamine- versus nonketamine-based sedation on delirium and coma in the intensive care unit. *J Intensive Care Med*. 2020;35(6):536-41.
- ³² Miller M, Kruit N, Heldreich C, Ware S, Habig K, Reid C, et al. Hemodynamic response after rapid sequence induction with ketamine in out-of-hospital patients at risk of shock as defined by the shock index. *Ann Emerg Med* 2016;68(2):181-8.e2.
- ³³ Christ G, Mundigler G, Merhaut C, Zehetgruber M, Kratochwill C, Heinz G, et al. Adverse cardiovascular effects of ketamine infusion in patients with catecholamine-dependent heart failure. *Anaesth Intensive Care*. 1997;25(3):255-9.
- ³⁴ Jakob SM, Ruokonen E, Grounds RM, Sarapohja T, Garratt C, Pocock SJ, et al. Dexmedetomidine vs midazolam or propofol for sedation during prolonged mechanical ventilation: two randomized controlled trials. *JAMA*. 2012;307(11):1151–60.

- ³⁵ Mohamed AKS, Mehta AA, James P. Predictors of mortality of severe sepsis among adult patients in the medical Intensive Care Unit. *Lung India*. 2017;34(4):330–5.
- ³⁶ Vallet H, Schwarz GL, Flaatten H, de Lange DW, Guidet B, Dechartres A. Mortality of Older Patients Admitted to an ICU: A Systematic Review. *Crit Care Med*. 2021;49(2):324-34.
- ³⁷ Shehabi Y, Howe BD, Bellomo R, Arabi YM, Bailey M, Bass FE, et al. Early sedation with dexmedetomidine in critically ill patients (SPICE III). *N Engl J Med*. 2019;380(26):2506–17
- ³⁸ Chanques G, Constantin JM, Devlin JW, Ely EW, Fraser GL, Gélinas C, et al. Analgesia and sedation in patients with ARDS. *Intensive Care Med*. 2020;46(12):2342-56.
- ³⁹ Phua CK, Wee A, Lim A, Abisheganaden J, Verma A. Fentanyl-induced chest wall rigidity syndrome in a routine bronchoscopy. *Respir Med Case Rep*. 2017;20:205–7
- ⁴⁰ Ammar MA, Sacha GL, Welch SC, Bass SN, Kane-Gill SL, Duggal A, et al. Sedation, Analgesia, and Paralysis in COVID-19 Patients in the Setting of Drug Shortages. *J Intensive Care Med*. 2021;36(2):157-74. doi: 10.1177/0885066620951426
- ⁴¹ Gregers MCT, Mikkelsen S, Lindvig KP, Brøchner AC. Ketamine as an anesthetic for patients with acute brain injury: a systematic review. *Neurocrit Care*. 2020;33(1):273-82.

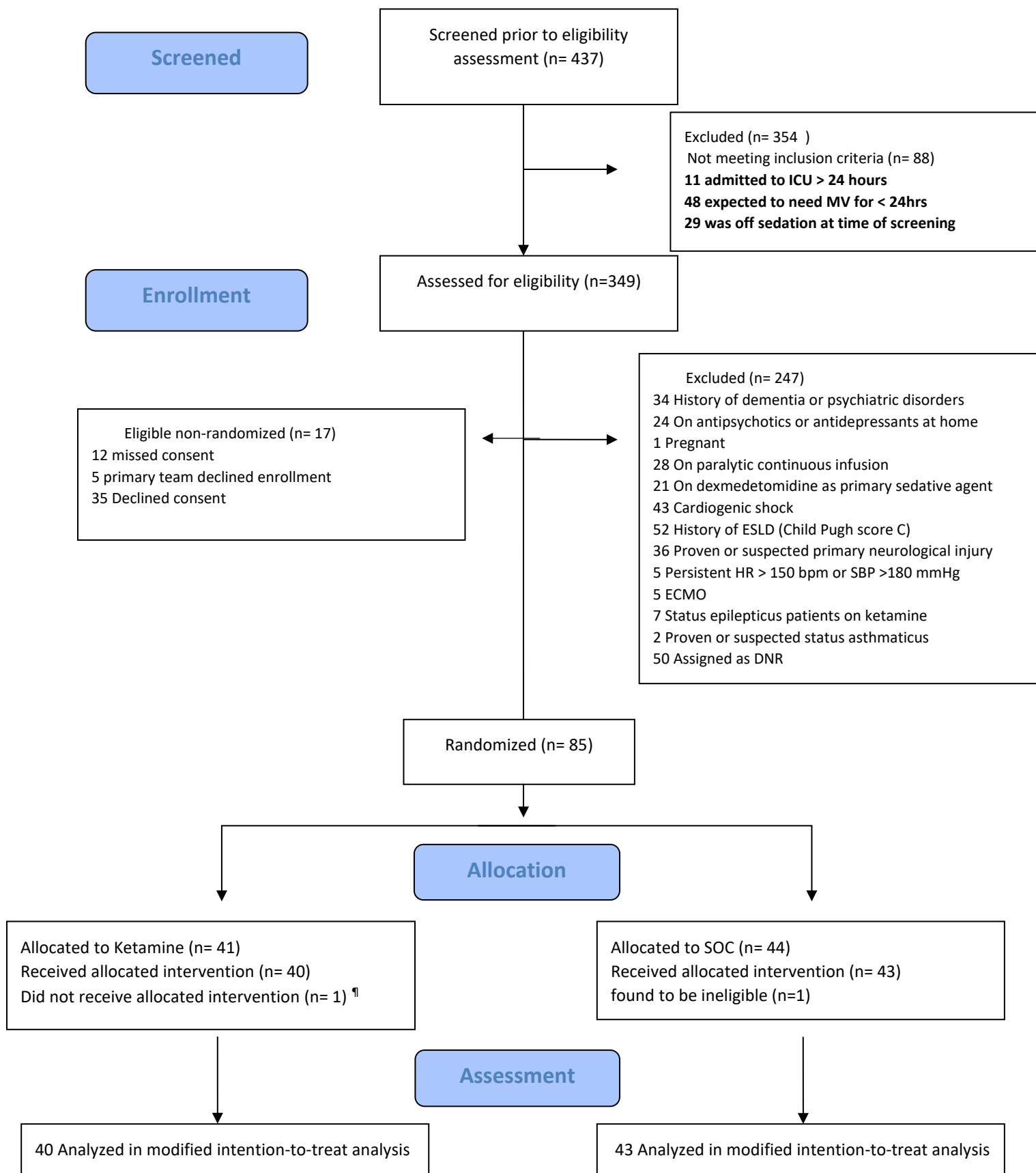


Figure 1: Study Flow Chart

Figure Caption: ¶ deemed to be extubatable post randomization

Abbreviations: ESLD, end stage liver diseases; HR, heart rate; SBP, systolic blood pressure; ECMO, Extracorporeal membrane oxygenation; DNR, do-not-resuscitate

Table 1. Demographic and baseline characteristics

	All (N=83)	SOC (N=43)	Ketamine (N=40)	P
Age, years	61 [44.5;71]	61 [47.5;70]	59 [40.5;73]	0.61
Sex, N (%)				0.68
Male	51 (61.4)	25 (58.1)	26 (65.0)	
Female	32 (38.6)	18 (41.9)	14 (35.0)	
Weight, kilogram	65 [50.7;73.2]	61.8 [47.5;69.4]	67.5 [51.9;81.2]	0.09
ICU type, N (%)				0.74
Medical	40 (48.2)	19 (44.2)	21 (52.5)	
Surgical	22 (26.5)	12 (27.9)	10 (25)	
Transplant/oncology ICU	21 (25.3)	12 (27.9)	9 (22.5)	
The primary reason for ICU admission, N (%)				
Sepsis or septic shock	25 (30.1)	14 (32.6)	11 (27.5)	0.79
Acute respiratory distress syndrome	50 (60.2)	28 (65.1)	22 (55)	0.47
Cardiovascular	8 (9.64)	3 (6.98)	5 (12.5)	0.47
Gastrointestinal	6 (7.23)	5 (11.6)	1 (2.5)	0.20
Neurological	10 (12)	5 (11.6)	5 (12.5)	1
Trauma	2 (2.41)	1 (2.33)	1 (2.5)	1
Metabolic and endocrine disorder	1 (1.2)	1 (2.33)	0 (0)	1
Renal	6 (7.23)	3 (6.98)	3 (7.5)	1
Hematological	3 (3.61)	1 (2.33)	2 (5)	0.61
Major surgery	25 (30.1)	11 (25.6)	14 (35)	0.49
Comorbidities, N (%)				
COPD	6 (7.23)	6 (14)	0 (0)	0.03
Mild liver dysfunction [Child Pugh score A, B]	9 (10.8)	6 (14)	3 (7.5)	0.49
Diabetes	28 (33.7)	17 (39.5)	11 (27.5)	0.35
CKD	16 (19.3)	9 (20.9)	7 (17.5)	0.91
Solid malignancy	24 (28.9)	14 (32.6)	10 (25)	0.61
Hematological malignancy	14 (16.9)	4 (9.3)	10 (25)	0.11
Recipient of solid organ transplantation	21 (25.3)	11 (25.6)	10 (25)	1
HSCT	7 (8.43)	3 (6.98)	4 (10)	0.71
HIV/AIDS	1 (1.2)	0 (0)	1 (2.5)	0.48
Hypertension	24 (28.9)	11 (25.6)	13 (32.5)	0.65
Source of infection, N (%)				
Gastrointestinal	5 (6.02)	2 (4.65)	3 (7.5)	0.67
Urine	6 (7.23)	4 (9.3)	2 (5)	0.68
Blood	9 (10.8)	3 (6.98)	6 (15)	0.30
Skin and soft tissue infections and osteomyelitis	2 (2.41)	2 (4.65)	0 (0)	0.49
Respiratory	26 (31.3)	13 (30.2)	13 (32.5)	1
Unknown	11 (13.3)	4 (9.3)	7 (17.5)	0.44
Neuromuscular blockers (atracurium infusion) post-randomization, N (%)	7 (8.43)	2 (4.65)	5 (12.5)	0.25
SOFA score [¶]	8 [5;10]	8 [6;9]	8 [5;10]	0.87
APACHE II ^{**}	20 [13;26]	19 [14;25]	20.5 [13;26.75]	0.83
Renal replacement therapy at baseline, N (%)	7 (8.43)	3 (6.98)	4 (10)	0.71

	All (N=83)	SOC (N=43)	Ketamine (N=40)	P
Type of RRT, N (%)				1
iHD	5 (71.4)	2 (66.7)	3 (75)	
CVVH	1 (14.3)	1 (33.3)	0 (0)	
CVVHDF	1 (14.3)	0 (0)	1 (25)	
Lactate at baseline, mmol/L	1.8 [1.2;3.05]	1.4 [1 ;2.30]	2.2 [1.58;3.4]	0.004
Urea at baseline, mmol/L	7.2 [4.25;14.4]	7.7 [4.65;17.6]	6.15 [4.12;10.9]	0.27
Mode of mechanical ventilation, N (%)				0.08
AC	43 (51.8)	19 (44.2)	24 (60)	
PCV	19 (22.9)	14 (32.6)	5 (12.5)	
PS	1 (1.2)	1 (2.33)	0 (0)	
SIMV	1 (1.20)	1 (2.33)	0 (0)	
PRVC	19 (22.9)	8 (18.6)	11 (27.5)	
PH from ABG	7.31 [7.24;7.40]	7.34 [7.25;7.42]	7.3 [7.23;7.37]	0.31
PCO2 from ABG, kilopascals	6 [5;7.5]	6 [5.1;7.6]	5.9 [4.97;7.34]	0.56
PO2 from ABG, kilopascals	10.5 [7.45;14.1]	10.6 [6.85;14.1]	10.1 [8.15;14.2]	0.79
HCO3 from ABG, mmol/L	23.6 [20.1;29.2]	23.7 [20.4;31.3]	23.3 [19.5;27.5]	0.31
Metabolic acidosis, N (%)	29 (34.9)	15 (34.9)	14 (35)	1
FiO2	0.5 [0.35;0.7]	0.5 [0.4;0.7]	0.5 [0.34;0.82]	0.66
PO2/ FiO2 ratio	152 [94.1;294]	144 [88.9;263]	156 [99.2;314]	0.77
PRE-DELIRIC score (%) †	20 [12; 33]	20 [12;36]	20 [13;28]	0.68
Heart rate (HR), beats/ min	93 [80;106]	91 [79;105]	93.5 [81.5;106]	0.48
Mean arterial pressure (MAP), mmHg	77 [69;89.5]	77 [69.5;88.5]	76.5 [65.5;91]	0.87

Data presented as n (%), mean ± sd, or median (interquartile range). SOC donates to standard of care

[¶]The Sequential Organ Failure Assessment (SOFA) is used to track organ failure in the ICU; scores range from 0 to 24, with higher scores indicating greater severity of illness

**The Acute Physiology and Chronic Health Evaluation (APACHE II) assesses the risk of death on a scale from 0 to 71, with higher scores indicating a higher risk of death.

† PRE-DELIRIC is a delirium prediction 24 hours after ICU admission to predict the chance to develop a delirium episode during the ICU stay.

Abbreviations: AC, assist-control mode; ABG, arterial blood gas; APACHE II, Acute Physiology And Chronic Health Evaluation II; COPD, chronic obstructive pulmonary disease; CKD, chronic kidney disease; CVVH, continuous veno-venous hemofiltration; CVVHDF, Continuous veno-venous hemodiafiltration; FiO2, fraction of inspired oxygen; HR, heart rate; HIV/AIDS, Human immunodeficiency virus infection and acquired immunodeficiency syndrome; HSCT, hematopoietic stem-cell transplantation; IQR interquartile range; IHD, intermittent hemodialysis; MAP, mean arterial pressure; RRT, renal replacement therapy; PaO2, partial pressure of oxygen; PCO2, partial pressure of carbon dioxide; PCV, pressure control ventilation; PS, pressure support; PRVC, pressure-regulated volume control; SIMV, Synchronized intermittent mandatory ventilation; SOFA, Sequential Organ Failure Assessment

Table 2. Efficacy outcomes

	All (N=83)	SOC (N=43)	Ketamine (N=40)	p
Primary and coprimary outcome				
MV within 28 days post-intubation, N (%)				1
No	52 (62.7)	27 (62.8)	25 (62.5)	
Yes	31 (37.3)	16 (37.2)	15 (37.5)	
28-Day Duration of MV, days	5 [2 ; 9]	5 [2;8]	7 [3;9.25]	0.15
Duration of MV at ICU discharge/death	8 [3 ;18.5]	7 [3;13.8]	9 [3;19]	0.32
Ventilation-free days [†]	19 [0;24]	19 [0;24]	19 [0 ;24.75]	0.70
Secondary				
Patients at goal RASS at 24 h [*] , N (%)	49 (59.8)	22 (52.4)	27 (67.5)	0.24
Patients at goal RASS at 48 h [§] , N (%)	51 (69.9)	26 (66.7)	25 (73.5)	0.70
Patients at Goal pain score at 24 h [¶] , N (%)	80 (96.39)	41 (95.35)	39 (97.5)	1
Patients at Goal pain score at 48 h [¶] , N (%)	79 (95.2)	41 (95.3)	38 (95)	1
Discharge from ICU, N (%)	76 (91.6)	40 (93)	36 (90)	0.71
ICU length of stay, days	12 [6;22.5]	12 [5.5;23]	12.5 [6;21.2]	0.89
Disposition at ICU discharge, N (%)				0.64
Morgue	28 (33.7)	16 (37.2)	12 (30)	
Floor	55 (66.3)	27 (62.8)	28 (70)	
Hospital discharge, N (%)	79 (95.2)	41 (95.3)	38 (95)	1
Hospital length of stay, days	26 [13.0; 39]	27 [12.5;47]	26 [15.8;38]	0.87
Disposition at hospital discharge, N (%)				0.96
Home	41 (49.4)	21 (48.8)	20 (50)	
Morgue	38 (45.8)	20 (46.5)	18 (45)	
Another facility	1 (1.2)	1 (2.33)	0 (0)	
Still in hospital	3 (3.61)	1 (2.33)	2 (5)	

Data presented as n (%), mean ± sd, or median (interquartile range). SOC donates to standard of care

[†] 53 patients (26 SOC and 27 ketamine) were alive and zero VFD was assigned for patients who died within 28 days

^{*} The RASS measures levels of consciousness (scores range from -5 [unresponsive] to +4 [combative]). Assessed in 82 patients at 24 hours (42 SOC and 40 ketamine-treated)

[§] The RASS was assessed in 73 patients at 48 hours (39 SOC and 34 in ketamine-treated)

[¶] Assessment of pain was done by Critical Care Pain Observation Tool for pain (CPOT) by evaluating facial expression, body movement, muscle tension, and adherence to use of the ventilator if intubated or vocalization if extubated. Total scores range from 0 to 8, with scores higher than 2 indicating the presence of pain.

Abbreviations: MV, mechanical ventilation; RASS, Richmond Agitation and Sedation

Table 3: Sedatives and vasopressors requirements

	Baseline				48h post-randomization			
	All (N=83)	SOC (N=43)	Ketamine (N=40)	P	All (N=83)	SOC (N=43)	Ketamine (N=40)	P
RASS Score*	-2 [-4;-1]	-2 [-4;-1]	-2.50 [-4;-0.25]	0.76	-1 [-3;-1]	-1.50 [-3;-1]	-1.00 [-3;0]	0.847
pain score*	0 [0;0]	0 [0;0]	0 [0;0]	0.60	0 [0;0]	0 [0;0]	0 [0;0]	0.305
CAM-ICU Positive, N (%) †	1 (1.2)	0 (0)	1 (2.5)		2 (2.41)	0 (0)	2 (5)	
CAM-ICU Negative, N (%)†	36 (43.37)	19 (44.19)	17 (42.5)	0.58	34 (40.96)	19 (44.19)	15 (37.5)	0.30
CAM-ICU Not assessed, N (%)†	46 (55.42)	24 (55.81)	22 (55)		47 (56.63)	24 (55.81)	23 (57.5)	
Fentanyl, N (%)	80 (96.4)	40 (93.0)	40 (100)	0.24	82 (98.8)	43 (100)	39 (97.5)	0.48
Propofol, N (%)	70 (84.3)	35 (81.4)	35 (87.5)	0.64	48 (57.8)	24 (55.8)	24 (60)	0.87
Midazolam, N (%)	47 (56.6)	24 (55.8)	23 (57.5)	1	14 (16.9)	8 (18.6)	6 (15)	0.89
Dexmedetomidine, N (%)	.	.	.		16 (19.3)	12 (27.9)	4 (10)	0.05
Cumulative dose of fentanyl (µg)	1475 [681;2600]	1262 [488;2612]	1612 [1100;2512]	0.17	3938 [2100;6400]	3817 [2220;6140]	4400 [1588;7700]	0.67
Fentanyl daily dose (µg /Kg)	23.4 [9.9 ;39.7]	21 [7.37;37.2]	26.4 [15.7;43.2]	0.22	66.8 [26.6;105]	63.5 [32.8;97.1]	69.6 [22.7;110]	0.69
Cumulative dose of propofol (mg)	755 [172;1738]	780 [150;1425]	640 [215;1850]	0.37	1990 [530;3862]	2091 [492;3316]	1815 [778;4272]	0.95
Propofol daily dose (mg/Kg)	10.9 [3.26;24.7]	12.7 [2.13;22.2]	10.6 [4.38;25.3]	0.63	28.4 [9.29;59]	28.4 [6.59;58.1]	28 [9.62;60.9]	1
Cumulative dose midazolam (mg)	5 [3 ;5.75]	4.75 [2;5.38]	5 [3 ;6]	0.54	12.5 [5.25;101]	7 [4.5 ;32.2]	62.8 [17.1;125]	0.11
Midazolam daily dose (mg/Kg)	0.08 [0.04;0.13]	0.08 [0.04;0.13]	0.08 [0.05;0.12]	0.89	0.24 [0.1 ;1.25]	0.15 [0.08;0.49]	0.85 [0.26;1.74]	0.16

Table 3: Sedatives and vasopressors requirements

	Baseline				48h post-randomization			
	All (N=83)	SOC (N=43)	Ketamine (N=40)	P	All (N=83)	SOC (N=43)	Ketamine (N=40)	P
Cumulative Dexmedetomidine dose (µg)	.	.	.		667 [357;1222]	667 [357;1222]	711 [310;1730]	0.90
Dexmedetomidine Daily dose (µg /Kg)	.	.	.		9.34 [5.33;22.8]	9.34 [5.33;22.0]	18 [4.67;35.5]	0.63
Norepinephrine, N (%)	50 (60.2)	26 (60.5)	24 (60)	1	52 (62.7)	27 (62.8)	25 (62.5)	1
Epinephrine, N (%)	6 (7.23)	4 (9.3)	2 (5)	0.68	5 (6.02)	1 (2.33)	4 (10)	0.19
Phenylephrine, N (%)	24 (28.9)	16 (37.2)	8 (20)	0.14	11 (13.3)	5 (11.6)	6 (15)	0.89
Vasopressin, N (%)	8 (9.64)	5 (11.6)	3 (7.5)	0.71	15 (18.1)	8 (18.6)	7 (17.5)	1
Dopamine, N (%)	4 (4.82)	2 (4.65)	2 (5)	1	5 (6.02)	3 (6.98)	2 (5)	1
Cumulative dose of Norepinephrine (mg)	5.92 [2.5;12.1]	5.92 [1.82;10.7]	6.35 [3.53;14.2]	0.38	9 [4.92;28]	8.63 [6.13;26]	9.37 [4.4;28.4]	0.89
Cumulative dose of epinephrine (mg)	1.167 [0.43;1.37]	1.24 [0.53;1.5]	0.81 [0.47;1.15]	0.36	6.09 [2;13.1]	29.2 [29.2;29.2]	4.04 [1.88;7.84]	0.16
Cumulative phenylephrine dose (mg)	0.45 [0.3;1.1]	0.45 [0.3;1.3]	0.45 [0.3;0.7]	0.78	0.60 [0.21;46.8]	36 [0.5;57.6]	0.45 [0.17;5.1]	0.52
Cumulative dose of dopamine (mg)	133 [70.6;203]	133 [110; 156]	149 [86.2; 213]	1	563 [490;676]	563 [482;619]	602 [546;659]	0.56
Cumulative vasopressin (units)	18.2 [11.4;27.9]	12.0 [9.6;15]	39.6 [30.5;64.2]	0.05	70.8 [30;91.6]	24 [21.6;82.8]	81.6 [60;89.6]	0.20

Data presented as n (%), mean ± sd, or median (interquartile range). SOC donates to standard of care

* The RASS measures levels of consciousness (scores range from -5 [unresponsive] to +4 [combative])

¶ Assessment of pain was done by Critical Care Pain Observation Tool for pain (CPOT) by evaluating facial expression, body movement, muscle tension, and adherence to use of the ventilator if intubated or vocalization if extubated. Total scores range from 0 to 8, with scores higher than 2 indicating the presence of pain.

† The CAM-ICU, scores delirium as either present [positive] or not present [negative]). Assessments was done when the patient was maximally awake. if in coma, unable to evaluate.

Abbreviation: CAM-ICU, Confusion Assessment Method for the ICU; RASS, Richmond Agitation and Sedation Scale.

Table 4. Safety outcomes

	All (N=83)	SOC (N=43)	Ketamine (N=40)	p
28-Day Tracheotomy, N (%)	22 (26.5)	11 (25.6)	11 (27.5)	1
28-Day unplanned extubation/Self-extubation, N (%)	2 (2.41)	0 (0)	2 (5)	0.23
28-Day Re-intubation, N (%)	17 (20.5)	5 (11.6)	12 (30)	0.07
Patient who did not Completed 48h of trial, N (%)	20 (24.1)	5 (11.63)	15 (37.5)	0.01
Reason for trial discontinuation before 48h, N (%) ¶				
Excessive sedation and patients not in target RASS	2 (10)	0 (0)	2 (13.3)	1
Death	4 (20)	2 (40)	2 (13.3)	0.25
Goal changed to comfort care	2 (10)	1(20)	1 (6.67)	0.45
Extubation and weaning off sedation in 48h	14 (70)	3 (60)	11 (73.33)	0.61
Physician decline patient participation	1 (5)	0 (0)	1 (6.67)	1
Hemodynamics				
HR at 24h	92 [75.5;107]	95 [80;107]	83.5 [71.8;105]	0.11
HR at 48h	84 [72;100]	89 [75;104]	82 [71;99]	0.31
MAP at 24h	75 [64.5;87]	75 [62.5;86.5]	74.5 [69.5;91.5]	0.31
MAP at 48h	77 [65;90]	76 [67.5;87]	77.5 [64;92.5]	0.50
Persistent tachycardia within the first 48h [HR > 130 beats/minutes] , N (%)	4 (4.82)	1 (2.33)	3 (7.5)	0.35
Persistent hypertension within the first 48h [systolic blood pressure ≥ 180 mmHg] , N (%)	1 (1.2)	0 (0)	1 (2.5)	0.48
Uncontrolled agitation, N (%)	10 (12.05)	4 (9.3)	6 (15)	0.51
Combative behavior to the nursing staff, N (%)	2 (2.41)	1 (2.33)	1 (2.5)	1
Hyper-salivation and frequent suctioning, N (%)	22 (26.5)	14 (32.6)	8 (20)	0.29
CPIS score within 48h post-randomization†	4 [2;5]	4 [3;6]	3.50 [2;4.25]	0.02
Pneumonia , N (%)	16 (19.3)	10 (23.3)	6 (15)	0.41
Delirium and hallucination, N (%)	4 (4.82)	0 (0)	4 (10)	0.05
Patient started on antipsychotics within 48h post-randomization, N (%)	7 (8.43)	4 (9.3)	3 (7.5)	1
Haldol	1 (14.3)	1 (25)	0 (0)	1
Quetiapine	5 (71.4)	2 (50)	3 (100)	0.43
Risperidone	1 (14.3)	1 (25)	0 (0)	1

Olanzapine	1 (14.3)	0 (0)	1 (33.3)	0.43
Psychiatric Physician consulted, N (%)	1 (1.20)	0 (0)	1 (2.5)	0.48
Use of physical restraint 48h post-randomization, N (%)	22 (26.5)	10 (23.3)	12 (30)	0.66
28-day mortality rate, N (%)	25 (30.1)	14 (32.6)	11 (27.5)	0.79
Cause of death, N (%)				
Cardiogenic shock	4 (17.4)	3 (23.1)	1 (10)	0.60
Septic shock	15 (62.5)	9 (64.3)	6 (60)	1
Hypovolemic shock	4 (17.4)	3 (23.1)	1 (10)	0.60
Respiratory	17 (68)	8 (57.1)	9 (81.8)	0.23
Metabolic	6 (26.1)	4 (30.8)	2 (20)	0.66
Multi-organ failure	16 (66.7)	11 (78.6)	5 (50)	0.20

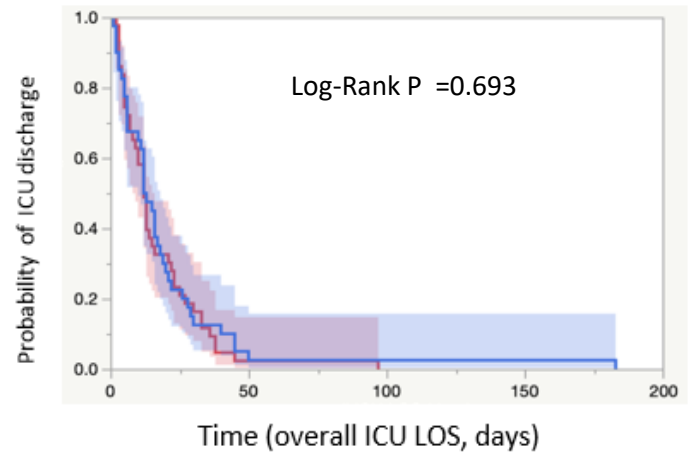
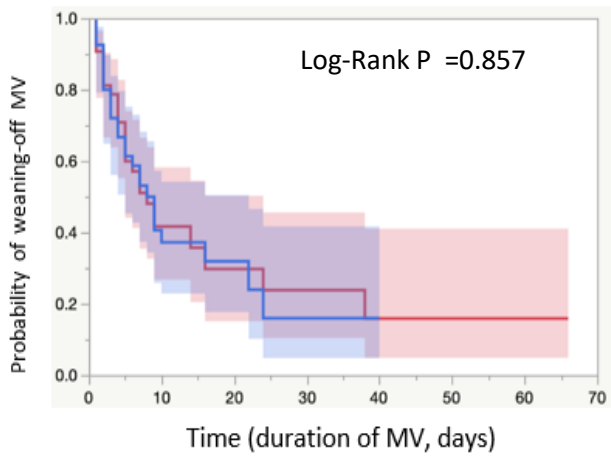
Data presented as n (%), mean \pm sd, or median (interquartile range). SOC donates to standard of care

[¶] Assessed in 20 patients (5 SOC and 15 ketamine-treated)

[†] CPIS score used to differentiate secretions caused by patients' underlying lung pathology (ventilator-associated pneumonia [VAP]) vs ketamine-associated hypersalivation. Likelihood of VAP does seem to be somewhat higher when scores are >6

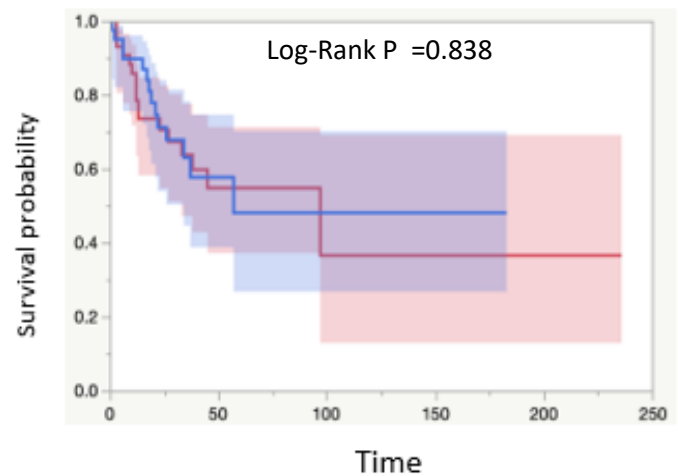
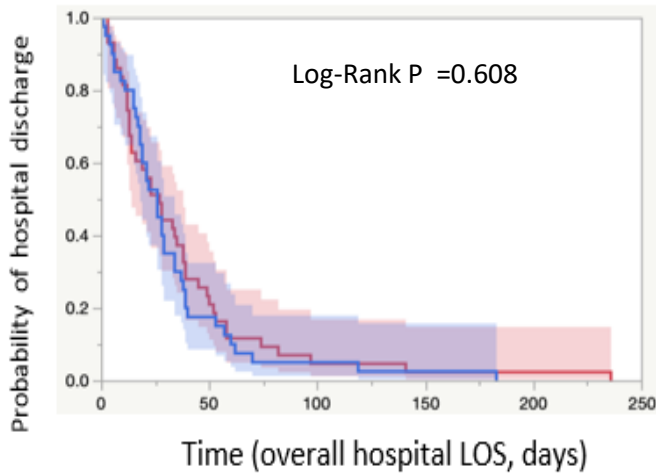
Abbreviations: CAM-ICU, Confusion Assessment Method for the ICU; CPIS, Clinical Pulmonary Infection Score; HR, heart rate; MAP, mean arterial pressure; RASS, Richmond Agitation and Sedation Scale

Figure 2: Time to event and Kaplan-Maier Curves



Panel A.

Panel B.



Panel C.

Panel D.

Figure caption: Panel A for duration of mechanical ventilation; Panel B represents the overall ICU length of stay (days); Panel C represents the overall hospital length of stay (days); Panel D represents 28-day mortality. Red line represents the standard of care group and blue line represents the ketamine group. The 95% confidence interval was illustrated as a band around the time-to-event curves. SOC donates to standard of care

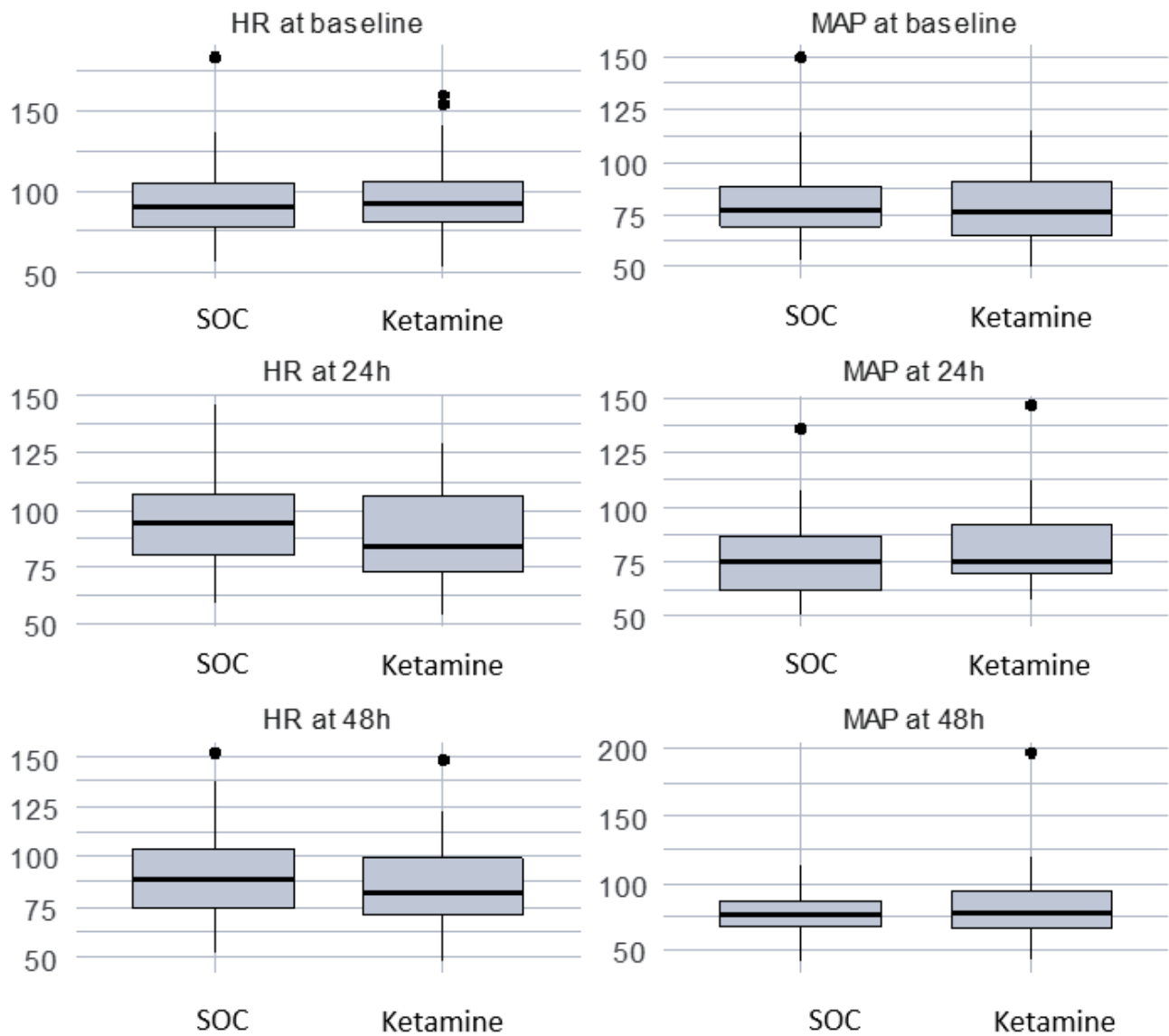


Figure 3. HR and MAP at baseline, 24 hours, and 48 hours

SOC donates to standard of care. The middle black line is the median. The lower and upper lines of the box are the 25th and 75th percentile, respectively. Check this image. The lower and upper lines represent that percentile multiplied by 1.5 the Interquartile range

Abbreviation: HR, heart rate; MAP, mean arterial pressure

Supplementary Data

Table S1: Full inclusion and exclusion criteria

Inclusion criteria:
<ol style="list-style-type: none">1. Adults patients (>14 years)2. Recently intubated and commenced on mechanical ventilation within the last 24 hours.3. Admitted to one of the following ICUs (Medical, Surgical, transplant/oncology or COVID-19).4. Expected to require MV longer than 24 hours.5. Expected to be on the KFSH&RC sedation protocol.6. There is no objection of the ICU attending for enrollment.
Patients with the above inclusion criteria and has one of the following exclusion criteria were screened then excluded:
<ul style="list-style-type: none">• Patients with a history of dementia or psychiatric disorders or those on any antipsychotic or antidepressant medications at home.• Pregnancy.• Age < 14 years old.• Expected to need MV < 24 h.• Known hypersensitivity to ketamine.• Patients with expected targeted RASS score of – 5, e.g., patients on continuous infusion neuromuscular blockade.• Patients on dexmedetomidine as the primary sedative prior to randomization.• Patients with cardiogenic shock, acute decompensated heart failure, or myocardial infarction• History of end-stage liver failure (Child-Pugh score C).• Proven or suspected primary neurological injury (traumatic brain injury, ischemic stroke, intracranial

hemorrhage, spinal cord injury, anoxic brain injury, brain edema).

- Patients with persistent heart rate (HR) > 150 beats per minute (bpm) or systolic blood pressure (SBP) >180mmHg.
- Patients identified as Do Not Resuscitate (DNR) or those expected to die within 24 h.
- Patients on extracorporeal membrane oxygenation (ECMO).
- Patients with refractory status epilepticus who are receiving ketamine infusion.
- Proven or suspected status asthmaticus (the dose of this indication differed from the recommended dose for analgo-sedation)

Table S2: Cox-proportional regression analysis for weaning off mechanical ventilation

<i>Predictors</i>	<i>HR</i>	<i>95% CI</i>	<i>p</i>
Age	0.99	0.97 – 1.01	0.352
APACHE II on admission	0.99	0.94 – 1.03	0.620
SOFA score	0.97	0.87 – 1.08	0.536
Urea at baseline (mmol/L)	1.02	0.99 – 1.04	0.235
ketamine: No	<i>Reference</i>		
ketamine: Yes	1.19	0.66 – 2.16	0.563
Metabolic acidosis: No	<i>Reference</i>		
Metabolic acidosis: Yes	0.48	0.24 – 0.94	0.032
ICU type: Medical	<i>Reference</i>		
ICU type: Surgical	2.09	1.06 – 4.14	0.034
ICU type: transplant/oncology	2.11	1.02 – 4.35	0.043

Table legend: Abbreviation: APACHE II, Acute Physiology and Chronic Health Evaluation II; SOFA,

Sequential Organ Failure Assessment; HR : hazard ratio; CI: confidence interval

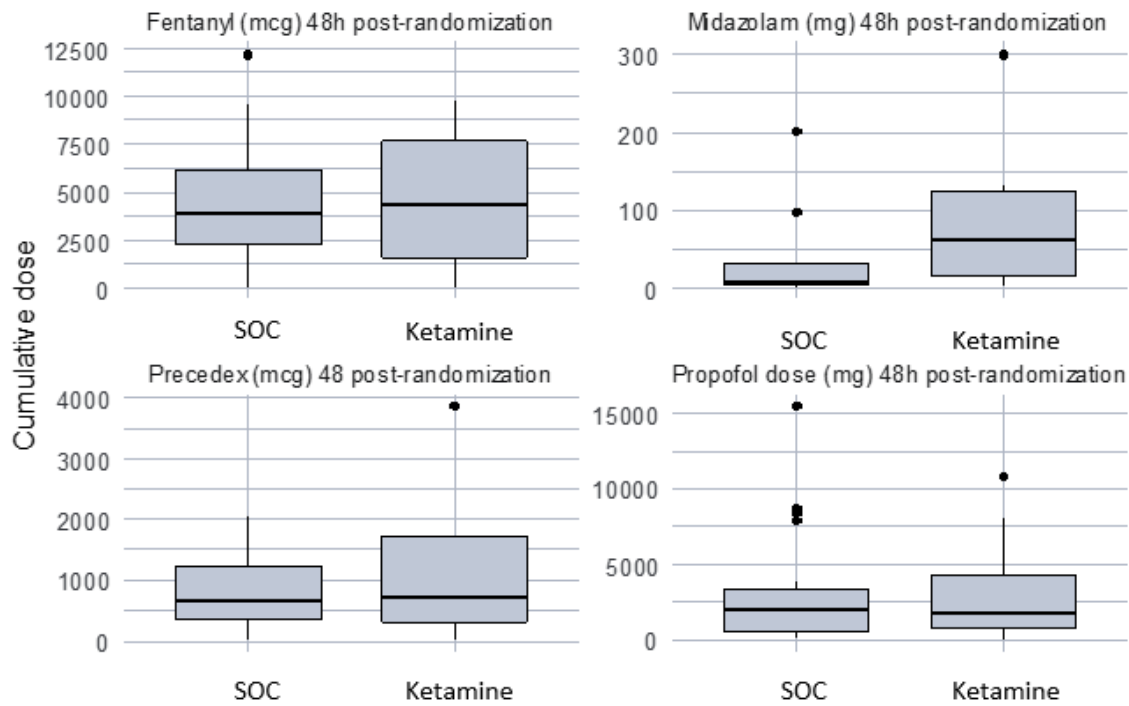


Figure S1. Box plots for cumulative doses of sedatives at 48 hours' post-randomization

SOC donates to standard of care

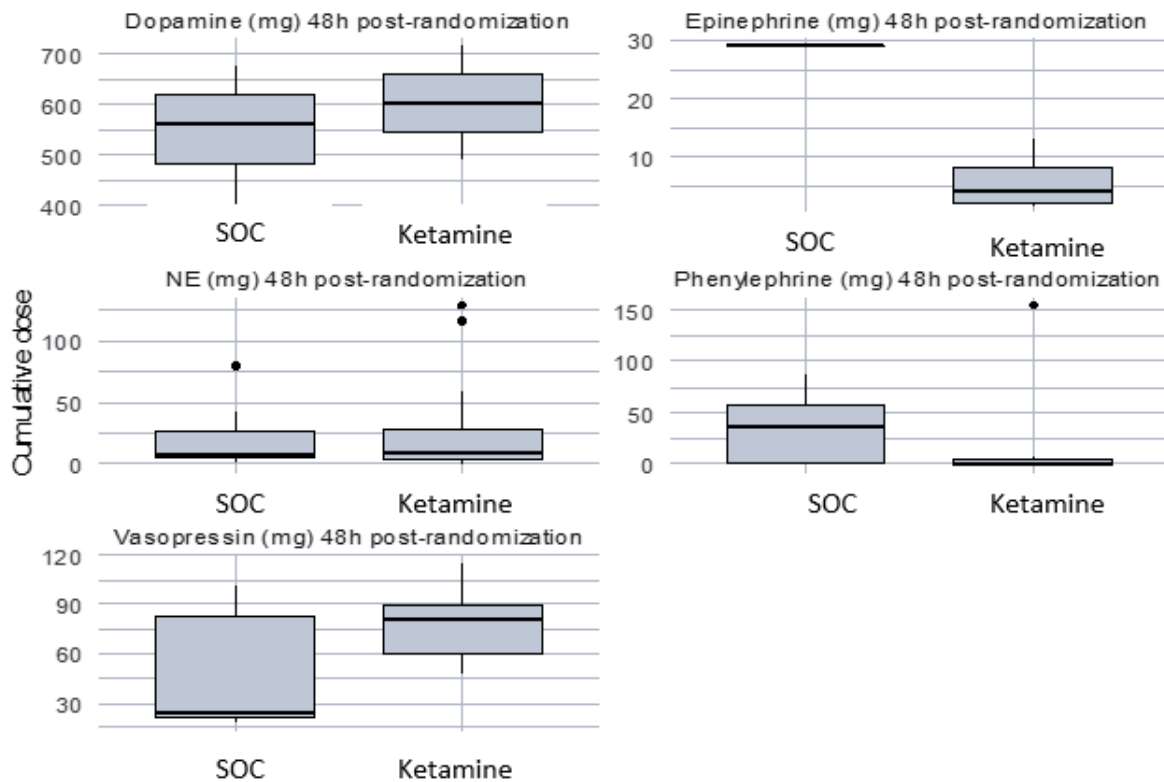


Figure S2. Box plots for cumulative doses of vasopressors at 48 hours' post-randomization

SOC donates to standard of care

Table S3: Sensitivity analysis for Sedatives and vasopressors requirements excluding patients started on atracurium post randomization

	SOC (N=41)	Ketamine (N=35)	P
Patient on fentanyl within 48h, N (%)	41 (100)	34 (97.1)	0.46
Fentanyl route of administration (48h) , N (%)			0.33
Infusion	35 (85.4)	30 (88.2)	
PRN bolus	3 (7.32)	0 (0)	
Both	3 (7.32)	4 (11.8)	
Cumulative dose of fentanyl (mcg) 48h post-randomization	3817 [2200;5900]	3400 [1500;6298]	0.87
Daily dose of fentanyl (mcg/Kg) 48h post-randomization	66.1 [32.7;103]	61.4 [19.5;108]	0.91
Patient on propofol 48h post-randomization, N (%)	22 (53.7)	20 (57.1)	0.94
Propofol route of administration (48h) , N (%)			0.09
Infusion	22 (100)	17 (85)	
PRN bolus	0 (0)	1 (5)	
Both	0 (0)	2 (10)	
Cumulative propofol dose (mg) 48h post-randomization	2161 [398;3406]	1688 [778;4272]	0.88
Propofol daily dose (mg/kg) 48h post-randomization	33.6 [7.65;58.5]	27.8 [9.62;56.7]	0.76
Patient on midazolam within 48h post-randomization, N (%)	7 (17.1)	4 (11.4)	0.71
Midazolam route of administration (48h) , N (%)			0.49
Infusion	3 (42.9)	1 (25)	
PRN bolus	4 (57.1)	2 (50)	
Both	0 (0)	1 (25)	
Cumulative dose of midazolam (mg) 48h post-randomization	6.00 [4.00;54.5]	58.5 [12.5;110]	0.29
Midazolam daily dose (mg/kg) 48h post-randomization	0.21 [0.09;0.72]	0.74 [0.19;1.43]	0.45
Dexmedetomidine starter within 24h post-randomization, N (%)	12 (29.3)	4 (11.4)	0.11
Cumulative dose of Dexmedetomidine (mcg) 48 post-randomization	667 [357;1222]	711 [310;1730]	0.90
Daily dose of Dexmedetomidine (mcg/Kg) 48h post-randomization	9.34 [5.33;22.0]	18 [4.67;35.5]	0.63
Patient on Norepinephrine within 48 h, N (%)	25 (60.89)	21 (60.0)	1

Cumulative dose of Norepinephrine (mg) 48h post-randomization	8.07 [5.27;20.07]	8.21 [3.66;28]	0.97
Patient of epinephrine within 48h post-randomization, N (%)	1 (2.44)	2 (5.71)	0.59
Cumulative dose of epinephrine (mg) 48h post-randomization	29.2 [29.2;29.2]	3.805 [1.52;6.09]	0.22
Patient on phenylephrine within 48h post-randomization, N (%)	5 (12.2)	5 (14.29)	1
Cumulative dose of phenylephrine (mg) 48h post-randomization	36 [0.3;72.55]	0.6 [0.213;81.3]	0.75
Patient on dopamine within 48h post-randomization, N (%)	3 (7.32)	2 (5.71)	1
Cumulative dose of dopamine (mg) 48h post-randomization	562.56 [401.74;675.84]	602.3 [489.6;715]	0.56
Patient on vasopressin within 48h post-randomization, N (%)	7 (17.07)	5 (14.29)	1
Cumulative dose of vasopressin (units) 48h post-randomization	48 [21.6;95.57]	69.6 [49.2;104.4]	0.41

Data presented as n (%), mean \pm sd, or median (interquartile range). SOC donates to standard of care

Table S4: Factors associated with mortality at 28 days

<i>Predictors</i>	<i>OR</i>	<i>95% CI</i>	<i>p</i>
Intercept	0.04	0.00 – 0.64	0.026
ketamine =No	Ref		
ketamine = Yes	0.66	0.22 – 1.99	0.460
APACHE II on admission	1.05	0.96 – 1.15	0.285
SOFA score	1.01	0.81 – 1.24	0.961
Age	1.04	1.00 – 1.07	0.040
Duration of mechanical ventilation	0.99	0.96 – 1.02	0.558
ICU type: Medical			
ICU type=Surgical	0.11	0.02 – 0.64	0.016
ICU type= transplant/oncology	0.63	0.17 – 2.40	0.505
Urea at baseline(mmol/L)	0.97	0.92 – 1.04	0.422
Metabolic acidosis=No			
Metabolic acidosis=Yes	2.34	0.67 – 8.15	0.185

Table legend: Abbreviation: APACHE II, Acute Physiology and Chronic Health Evaluation II; SOFA,

Sequential Organ Failure Assessment; OR : Odds Ratio; CI: confidence interval.