

**Fatigue symptoms associated with COVID-19 in convalescent or recovered COVID-19 patients;  
a systematic review and meta-analysis**

Sanjay Rao<sup>1, \*</sup>, Tarek Benzouak<sup>2</sup>, Sasha Gunpat<sup>2</sup>, Rachel J. Burns<sup>2</sup>, Tayyeb A. Tahir<sup>3</sup>, Stephen Jolles<sup>4</sup>, and Steve Kisely<sup>5</sup>

<sup>1</sup> University of Ottawa, Department of Psychiatry

<sup>2</sup> Carleton University, Department of Psychology

<sup>3</sup> University Hospital of Wales, Department of Liaison Psychiatry

<sup>4</sup> University Hospital of Wales, Department of Immunology

<sup>5</sup> University of Queensland, Department of Psychiatry

**\*Corresponding Author.**

Dr. Sanjay Rao, MBBS, MD, FRCPsych, FRCPC, MBA

Email address: [sra4@uottawa.ca](mailto:sra4@uottawa.ca)

Telephone number: +001-888-691-6111

Faculty of Medicine, Department of Psychiatry, University of Ottawa

5457-1145 Carling Avenue

Ottawa, Ontario

Canada, K1Z 7K4

**Running Title:** Fatigue symptoms associated with convalescent or recovered COVID-19

**Main Text Word Count:** 5910

## **Background**

The prevalence and prognosis of post-acute stage SARS-CoV-2 infection fatigue symptoms remain largely unknown.

## **Aims**

We performed a systematic review to evaluate the prevalence of fatigue in post-recovery from SARS-CoV-2 infection.

## **Method**

Medline, Embase, PsycINFO, CINAHL, Web of Science, Scopus, trial registries, Cochrane Central Register of Controlled Trials and Google Scholar were searched for studies on fatigue in samples that recovered from PCR diagnosed COVID-19. Meta-analyses were conducted separately for each recruitment setting.

## **Results**

We identified 39 studies with 8825 patients that recovered from COVID-19. Post-COVID-19 patients self-report of fatigue was higher compared to healthy controls (RR = 3.688, 95%CI [2.502, 5.436],  $p < 0.001$ ). Over 50% of patients discharged from inpatient care reported symptoms of fatigue during the first (ER = 0.517, 95%CI [0.278, 0.749]) and second month following recovery (ER = 0.527, 95%CI [0.337, 0.709]). 10% of the community patients reported fatigue in the first month post-recovery. Patient setting moderated the association between COVID-19 recovery and fatigue symptoms ( $R^2 = 0.12$ ,  $p < 0.001$ ). Female gender was associated with greater self-report of fatigue (OR = 1.782, 95%CI [1.531, 2.870]). Patients recruited through social media had fatigue above 90% across multiple time points. Fatigue was highest in studies from Europe.

## **Conclusion**

Fatigue is a symptom associated with functional challenges which could have economic and social impacts. Developing long-term planning for fatigue management amongst patients beyond acute stages of SARS-CoV-2 infection is essential to optimizing patient care and public health outcomes.

The first cases of SARS-CoV-2 (later named COVID-19) were reported in November 2019[1]. By March 2020, the World Health Organization gave it a pandemic status [2]. Even during the early period of the spread, several studies reported acute mental health effects[3] ranging from stress[4] to depression[5] and anxiety[6]. A high level of post-traumatic stress and depressive symptoms were reported in a systematic review of these studies[7].

Several factors can influence mental health and wellbeing in pandemics. General factors may be related to fear of acquiring the infection[8 9], challenges posed by the pandemic restrictions[10 11], and the economic impacts of the pandemic itself[12 13]. The specific factors influencing mental health due to COVID-19 can be the direct biological mechanisms by which the virus affects individuals[14]. For example, an autoinflammatory response affecting multiple systems has been noted in early research of patients infected with SAR-Cov-2[15 16].

The virus can directly affect the brain[17 18] and produce symptoms such as encephalopathy[19], dysgeusia[20], anosmia[21], confusion[22 23], dizziness[24], headache[25], Ischemic Stroke[26 27], and behavioural changes[28]. At a symptom level, acute mental health effects of the virus include depression[29], anxiety[30], and fatigue[31]. However, viral infections are known to have effects beyond the acute infection[32 33]. They can impact mental health even when the virus is not active in the body[34]. Post recovery from the infection, patients may suffer symptoms such as fatigue[35] and low mood[36]. Chronic fatigue has been associated with previous infections with cytomegalovirus (CMV)[37], Epstein-Barr Virus (EBV)[38], Herpesvirus-6[39], Ross River virus[40], Dengue virus[41], MERS[42], and SARS[34]. The causes of post-viral symptoms during recovery stages are largely unknown. Longer-term changes in the immune system[41 43] or dysregulation of peripheral and autonomic nervous system functioning[44 45] have been implicated.

Several patterns of persistent symptoms are emerging post recovery from COVID-19. The symptoms may be present continually[46 47] or in a cyclical manner[48], at times triggered by stress[49 50] and physical effort[51 52]. Fatigue and low mood have been noted repeatedly even after the acute SARS-Cov-2 infection has subsided[53-55]. The terms 'long Covid', 'long haul Covid', and 'Covid long hauler' are frequently used in the media and scientific literature to capture the challenges of individuals suffering from such post-Covid syndromes[56-58]. These syndromes can fall into more than one pattern[54 59], and the underlying causal mechanisms may be many. For instance, in certain individuals, cardiac function changes have been described in patients with symptoms of fatigue after contracting and recovering from acute SAR-Cov-2 infection[60 61]. Patients admitted in the ICU may also have more extensive lung damage[62] with fatigue as a symptom[63].

In some countries, such as the UK, services to address the long-term effects of COVID-19 have been proposed[64 65] and are being established[66 67]. In this context, fatigue is an important symptom because it is associated with disability[68 69] and economic consequences[70 71]. Fatigue symptoms may also affect the morale of the sufferers and push them to develop other psychiatric conditions such as depression[72 73]. Various professional bodies have published

initial guidelines for the management of such symptoms[74]. It has been argued that patients with even milder attacks of COVID-19 who do not receive inpatient care may suffer long-term symptoms[75].

The current literature is unclear about the incidence and prevalence of such symptoms in individuals with a past diagnosis of SARS-Cov-2 and how long they persist. As the number of patients recovering from COVID-19 continues to rise, addressing long-term consequences, such as fatigue, are critical for optimizing the health outcomes of survivors.

This systematic review aims to address essential questions specific to post-Covid fatigue to inform and guide the evaluation and management of COVID-19 recovery. First, the study will provide a quantitative evaluation of post-Covid fatigue prevalence across different time points from cross-sectional and longitudinal studies. Where possible, the review will also examine associations with factors such as the severity of illness, type of patient population (e.g., inpatient vs outpatient), effect of gender, comorbidities and different definitions of recovery.

## Methods

This systematic review was conducted in accordance with the PRISMA [76] and MOOSE guidelines. The study protocol and MEDLINE search strategy were pre-registered in the Open Science Framework (i.e., [osf.io/zu25b](https://osf.io/zu25b)) on the 14th of September, 2020 and underwent full registration in the International Prospective Register of Systematic Reviews on the 18th of September, 2020 (i.e., [CRD42020209411]).

### Search strategy

We searched Medline, Embase, PsycINFO, CINAHL, Web of Science, Scopus, trial registries (i.e., NIH clinical trials registry, Cochrane Central Register of Controlled Trials and ISRCTN registry) and google scholar. Pre-print servers (MedRxiv and Psycharxiv) were also included in our search. The database search was undertaken on the 16th of September, 2020, the 1st of October, 2020 the 8th of November, 2020, and the 14th of February, 2021. The study selection process was applied to these new searches.

A combined set of MeSH and keywords associated with COVID-19 and fatigue were used to identify publications on fatigue in individuals recovered from acute COVID-19 infection, diagnosed with appropriate testing. No restrictions relating to study design, location, or language were imposed. The search strategy was synthesized by one of the authors (TB) and reviewed by a medical librarian. The strategy for each database is provided in Supplementary Material S-2. Only publications from 2019 onwards were considered. References from opinion publications relating to post-COVID fatigue were hand searched and screened. Study authors were contacted when PCR reports were ambiguous or for further data on the course of fatigue.

Rayyan (QCRI) software was used for screening and managing the abstracts. Title, abstract, and full-text screening were conducted by two independent reviewers (TB and SG), and a senior author (SR) resolved any screening discordance. Study selection criteria were applied to the retrieved full text articles independently by two reviewers (TB and SG). Any disagreements were resolved through a discussion between the reviewers and a senior author (SR).

### **Selection Criteria**

The eligibility criteria were: a) COVID-19 was diagnosed by Rapid Testing polymerase chain reaction test (RT-PCR) or Viral Antigen Test; b) Recovery was defined by a negative finding in one of these tests and/or clinical judgement; c) Fatigue was assessed on follow-up either through self-report, clinical interview or a fatigue specific scale.

The exclusion criteria were: a) COVID-19 status was screened through antibody testing (i.e., IgG and IgM) only; b) absence of a post-infection follow-up; c) presence of medical or neurological complications (which could explain fatigue symptoms); d) the sample was comprised of participants below the age of 18; e) publication was in a language other than English, French or Spanish; or f) utilizing non-human methodology (i.e., lab simulation, in vitro or animal models).

As post-viral effects related to COVID-19 is an evolving challenge, several study designs were considered for evaluation: cluster or non-cluster randomized controlled trials, controlled trials, and uncontrolled trials, cross-sectional, case-control and cohort studies.

### **Data Extraction**

Data extraction was initiated on the 20th of December, 2020, and completed on the 20th of February, 2021. Data extraction was conducted by reviewers (TB and SG) in consultation with a senior author (SR). Study authors were contacted if required data were missing from a publication. Descriptive data extracted in this systematic review included the author, year of publication, study location, COVID-19 diagnostics, participants' mean age, study setting (i.e., clinical setting, general population), fatigue symptom report, study sample size, attrition, length of time between recovery and follow-up assessments of fatigue. For each report of post-viral fatigue, continuous data (i.e., mean and standard deviation) and categorical data (i.e., frequency data) relating to post-viral fatigue were extracted for meta-analysis.

### **Assessment of Bias and Quality**

Study quality assessments were completed by two reviewers (TB and SG). A third reviewer (SR) resolved any discrepancies. Risk of bias was assessed using several instruments, matching the appropriate scale to the study design. For non-randomized studies, the National Institute of Health Study Quality Assessment Tool for Observational Cohort and Cross-Sectional Studies was

selected. For randomized studies, Cochrane's ROB 2 was identified. The Joanna Briggs level of evidence scale for prognosis[77] was used for the overall strength of evidence.

## Data analysis

Comprehensive Meta-Analysis software (version 3) was used to conduct a meta-analysis of the data from the selected studies. Analyses were initiated on the 21st of February, 2021. A random-effects model was used for all statistical analyses. The primary outcome was the presence of fatigue. We calculated pooled prevalence and two-tailed 95% confidence intervals in studies reporting post-viral fatigue on follow-up. Prevalence analyses were pooled by recruitment setting: inpatient, outpatient, mixed, registries, and social media or COVID-19 app-based settings. For each recruitment setting, meta-analyses were performed for studies that applied uniform measurements of fatigue (i.e., self-report and validated measurement tools) and in which follow-up was conducted within the same month post-recovery. We used Risk Ratio (RR) as an effect size metric in studies that compared patients who recovered from COVID-19 with a control group. Odds Ratios (OR) were also used where COVID-19 recovered patients were divided into groups based on the severity of the acute infection or type of hospital care received. ORs were calculated to compare patients with PCR test negative and those retested positive after recovery. ORs were also used for examining gender differences and estimating the effect of biomarkers. Meta-regressions were conducted on studies rated as fair or good quality. We first examined the moderating effect of self-reported fatigue compared to the use of fatigue rating scales. The majority of the studies assessed fatigue through self-reports. Data from these were used to examine the effect of time since recovery, PCR negative test confirmed recovery, recruitment setting, average sample age, proportion of females, Diabetes Mellitus, COPD and hypertension.

Heterogeneity was tested using the Q statistic and reported in the form of a percentage of variation across studies ( $I^2$ ). A visual inspection of publication bias was conducted using a funnel plot and Egger's linear regression modelling to statistically determine the presence of symmetry.

## Results

### Study Selection

The initial search of the literature identified 4384 abstracts. 496 abstracts were selected. Full-text articles of these abstracts were obtained, and study criteria were applied. Thirty-one published studies[53-55 78-105] and eight medRxiv preprints[46 75 106-111], met the inclusion criteria for this systematic review (Figure 1). The sample sizes ranged from 18[102] to 1655[79], with mean age across studies ranging from 32.3 (SD = 8.5)[54] to 67.1 (SD =11.6)[87]. The studies represented 18 countries with a total sample of 8825 individuals recovered from

COVID-19 (Table 1). Diagnosis of COVID-19 was confirmed through Polymerase Chain Reaction (PCR) testing. PCR negative status was used to confirm recovery in 16 studies (5190 cases). 25 studies (3635 cases) defined recovery hospital discharge or a specified number of days since the last positive PCR results. 25 studies were from inpatient settings and five were from outpatient settings, while four studies recruited through a mix of different clinical settings. Two studies recruited through patient registries, and one utilized a combination of two epidemiological datasets. Two studies reported recruitment through other methods such as social media (k = 1) or a COVID-19 symptom app (k = 1). 30 studies measured fatigue through symptom self-report and 9 studies utilized validated fatigue scales to evaluate fatigue rates within their samples.

Four studies compared patients discharged from ICUs and hospital wards[84 89 92 105]. Five studies compared recovery from severe and non-severe experiences of SARS-CoV-2 infection[55 79 81 94 101]. Three studies compared COVID-19 recovered patients and healthy controls[46 81 102]. Eight studies compared residual fatigue in female and male survivors[75 79 81 82 88 89 92 105], and two compared patients who retested positive for SARS-Cov-2 on PCR test with those who retrained PCR negative status[83 106]. Finally, two studies evaluated the association between biomarkers and post-COVID fatigue[80 92].

Data were extracted from thirty-nine studies and organized primarily according to the study setting and time intervals over which fatigue was assessed. Thirty (i.e., 30/39) studies used self-report of fatigue and ten used fatigue rating scales.

The study setting groups were: primarily inpatients, primarily outpatients, mixed inpatients/outpatients, population studies, recruitment through apps and social media. The time intervals or temporal groups were: 0-30 days (1 month), 31-60 days (1-2 months), 61-90 days (2-3 months), 91-120 days (3-4 months), 121-150 days (4-5 months), and 151-180 days (5-6 months).

Studies differed in the way recovery from COVID-19 was defined. Therefore, for each study, we chose one of the following approaches: PCR negative test, number of days after discharge from the hospital, and number of days since onset of the symptoms or PCR positive test. Fifteen studies defined their follow-up time as the number of days since symptom onset or PCR positive test results. In these studies, to account for the acute phase of COVID-19, day-0 of recovery was defined as fourteen days after follow-up initiation as this represents the recommended length of self-quarantine for patients with COVID-19[112 113]

Eight had repeated measure designs[46 55 75 86 95 96 98 104]. Where there were multiple assessments of fatigue within a temporal group, we calculated the mean of the fatigue scores or mean of the proportion of patients reporting fatigue.

## **Quality assessment and Publication bias**



Risk of bias assessment was conducted using the NIH Quality Assessment Tool for observational studies. Most studies were of fair quality (see S-6). The interrater reliability of the assessments was high ( $k = 0.8921$ , %agreement = 94.65%), and discrepancies were resolved through consensus. However, most studies were exploratory in nature rather than hypothesis-driven. Publication bias was assessed through funnel plots and Egger's regression. A low level of Publication bias was observed when all studies were considered (see S-5; Egger's bias = -2.742, 95%CI [-6.019, 0.534],  $t = 1.69$ ,  $p = 0.099$ ). No significant publication bias was found in studies with self-reported fatigue (Egger's bias = -2.458, 95%CI [-6.649, 1.734],  $t = 1.196$ ,  $p = 0.241$ ). However, studies using fatigue scales showed significant publication bias (Egger's bias = -3.797, 95%CI [-7.534, -0.059],  $t = 2.34$ ,  $p = 0.047$ ).

### **1. Fatigue in COVID-19 recovered patients from inpatient settings**

In the twenty-five studies with inpatient settings, the duration of follow-up was from 1-6 months. The majority of these studies assessed fatigue through self-reports ( $k = 20$ ). 10 studies used PCR negative test as a proxy for recovery.

In Group 1 (<1 month), 3 out of 5 studies used self-report of fatigue. There was a trend towards lower pooled prevalence of fatigue with the use of validated scales at 32% ( $k = 2$ ,  $ER = 0.320$ , 95%CI [0.126, 0.607],  $I^2 = 88.14\%$ ) compared to self-reports at 51.7% ( $k = 3$ ,  $ER = 0.517$ , 95%CI [0.278, 0.749],  $I^2 = 92.81\%$ ). However, the heterogeneity associated with these studies was found to be high. No meaningful comparison could be made between methods of defining recovery as 4 out of 5 studies used PCR negative test to confirm recovery.

With 12 studies, Group 2 (1-2 months) had the largest sample size and all studies used self-reports of fatigue. The pooled prevalence of fatigue was 52.7% ( $k = 7$ ,  $ER = 0.527$ , 95%CI [0.337, 0.709],  $I^2 = 96.07\%$ ; see figure 2a) in studies that did not use PCR negative test to confirm recovery compared to 49.3% ( $k = 7$ ,  $ER = 0.493$ , 95%CI [0.204, 0.787],  $I^2 = 98.36\%$ ; see figure 2b) in studies that used PCR negative test. This difference was nonsignificant ( $Q = 0.037$ ,  $df = 1$ ,  $p > 0.05$ ) and there was considerable heterogeneity between studies.

In Group 3 (2-3 months), 11 studies assessed fatigue. 7 of these studies used self-reports of fatigue and 4 used fatigue scales. Self-reported fatigue was higher in studies that did not use PCR negative test to define recovery ( $k=5$ ,  $ER = 0.590$ , 95%CI [0.189, 0.684],  $I^2 = 58.83\%$ ; see figure 2c) compared to those that did not ( $k=2$ ,  $ER = 0.352$ , 95%CI [0.071, 0.795],  $I^2 = 95.34\%$ ; see figure 2d) but this did not reach significance ( $p > 0.05$ ). Pooled prevalence of fatigue measured with scales was 47.8% ( $k = 4$ ,  $ER = 0.478$ , 95%CI [0.399, 0.558],  $I^2 = 56.29\%$ ; see figure 2e) with moderate heterogeneity between studies. No meaningful comparison could be made between methods of defining recovery within these studies as only 1 study used PCR negative test to confirm recovery. The pooled prevalence of fatigue measured through scales was lower



than the analysis of self-reported fatigue, this difference was nonsignificant ( $Q = 0.424$ ,  $df = 1$ ,  $p > 0.05$ ).

In the 3-4 month period (Group 4), there were 3 studies that elicited self-report of fatigue. Only 1 study used the PCR negative test result to identify recovery and had a fatigue prevalence of 28.3% ( $n = 538$ , 95%CI [0.246, 0.322]). The two smaller studies that did not use PCR negative test status for recovery, had a wide difference in fatigue prevalence with a 19.3% pooled prevalence of fatigue ( $k = 2$ ,  $ER = 0.193$ , 95%CI [0.049, 0.523],  $I^2 = 90.04\%$ ).

Group 5 (4-5 months) had only one study[105] which assessed self-reported fatigue. The prevalence of fatigue within their sample was found to be 39.1% ( $k = 1$ ,  $ER = 0.391$ , 95%CI [0.218, 0.598]). Notably, this study did not use PCR to define recovery.

Two studies followed up recovered patients beyond 6 months (Group 6). Huang and colleagues measured fatigue through self-report and defined recovery through PCR negative test. Within their sample, 1038 (62.7%) reported fatigue out of a total of 1655 participants (95%CI [0.604, 0.650]). In contrast, Latronico et al. also evaluated fatigue 180 days following discharge and assessed fatigue using the Fatigue Severity Scale rather than dichotomous self-reports. This single point estimate found a 35.6% (95%CI [0.231, 0.504]) prevalence of residual fatigue in COVID-19 recovered cases; this assessment did not use the PCR test to confirm recovery from COVID-19. However, the study conducted by Latronico et al. had a lower precision of estimate, likely due to a small sample size of 55 participants.

## **2. Fatigue in COVID-19 recovered patients from outpatient settings**

Five studies measured fatigue outcomes in COVID-19 in the first, second, and third month following recovery.

In Group 1 (<1 month) the larger study by Cellai et al. did not use PCR negative test for recovery, and reported fatigue in only 3.4% ( $n = 496$ , 95%CI [0.021, 0.054]) of patients. However, this may have been a result of the study design. Only a small number of the total sample were assessed for symptoms after 3 weeks. The Knight et al. study established recovery through PCR test negative findings. 34.7% ( $n = 101$ , 95%CI [0.260, 0.444]) and 28.4% ( $n = 95$ , 95%CI [0.203, 0.383]) reported fatigue during follow-ups conducted 36 days and 81 days following recovery status.

The only study of fatigue between 1-2 months (Group 2) was Townsend et al. This study evaluated the presence of post-COVID fatigue. The prevalence of fatigue within their sample was 52.3% ( $n = 128$ , 95%CI [0.437, 0.608]). Fatigue was measured using the Chalder Fatigue Scale, but recovery was not defined using PCR testing.

Two studies assessed fatigue using a validated scale within 2-3 months (Group 3). Woo et al. had a smaller sample size of 18 and a very wide time interval over which patients were assessed for symptoms. The prevalence of fatigue was 16.7% over 20-105 days. In contrast, Townsend et al. (2021) reported fatigue in 47.7% of their cohort (n = 153, 95%CI [0.399, 0.556]). Neither study used PCR negative testing to confirm recovery, and the data from these studies were not pooled due to significant differences in the duration of follow-up.

### **3. Fatigue in COVID-19 recovered patients from mixed settings**

Four studies evaluated fatigue in patients that recovered from COVID-19 in mixed settings. Two studies examined self-reported fatigue during the first month (Group 1) following recovery and consisted of patients that recovered from in-and outpatient care, and non-hospitalized cases. Data from these studies were not pooled due to significant differences in their follow-up design. First, 72.8% (n = 287, 95%CI [0.674, 0.777]) of the cohort in a study conducted by Kamal et al. reported experiencing fatigue. This study used PCR to define recovery from COVID-19. Another study conducted within this timeframe by Tenforde et al. found a prevalence of 71% when considering only respondents to telephone follow-up; however, this prevalence dropped to 35.4% when considering the full sample in which non-respondents are included.

One study was found to report fatigue during the second month of recovery within a mixed sample (i.e., hospital and non-hospital care). Within their sample, the prevalence of fatigue was found to be 29.5% (n = 61, 95%CI [0.194, 0.421]).

Peterson et al. used the Fatigue Impact Scale during an average follow-up of 111 days; however, this was accomplished using a wide range of 45-215 days. The fatigue reported within their cohort was lower than other studies as the prevalence was found to be 8.3% (n = 180, 95%CI [0.051, 0.134]); this difference is most likely affected by the study methodology.

### **4. Fatigue in COVID-19 recovered subjects recruited from general registry and secondary data**

Three studies were found to analyze self-report data from non-hospitalized patient registries (k = 2) and non-selective databases (k = 1). None defined recovery by PCR, and all measured fatigue using symptom self-report. Pooling two data points within the first month (Group 1) of recovery resulted in a prevalence of 9.7% (k = 2, ER = 0.097, 95%CI [0.031, 0.262], I<sup>2</sup> = 91.10%; see S-4).

One study by Cirulli and colleagues assessed fatigue during the second month of recovery. Within their sample, 6.6% (n = 152, 95%CI [0.036, 0.118]) reported the presence of fatigue symptoms 46 days following recovery.

All three studies evaluated fatigue symptoms during the third month of recovery, in which pooling point estimates resulted in an 8.2% ( $k = 3$ ,  $ER = 0.082$ , 95%CI [0.034, 0.188],  $I^2 = 80.75\%$ ; see S-4) prevalence of fatigue. Figures from all different time points in this study are substantially lower than post-COVID fatigue in the hospital population.

## **5. Fatigue in COVID-19 recovered subjects recruited using social media or tech-based apps.**

Two heterogeneous studies recruited individuals that recovered from COVID-19 using social media ( $k = 1$ ) and a COVID-19 related app ( $k = 1$ ) during the first and second months following recovery.

A repeated measures study conducted by Sudre et al. used a mobile symptom tracking COVID-19 app. Within their sample, fatigue was reported by 97.7% of 558 recovered cases ( $ER = 0.977$ , 95%CI [0.960, 0.986]) during follow-up participation 28 days post-positive PCR test results. Furthermore, when assessing fatigue in 189 individuals that recovered from COVID-19 56 days following PCR diagnosis of COVID-19, the prevalence was found to be 96.8% ( $k = 1$ ,  $ER = 0.968$ , 95%CI [0.931, 0.986]). The study aimed to identify symptoms associated with long-COVID; fatigue was found to be the most prevalent symptom within individuals reporting persistent symptoms following COVID-19 recovery. Fatigue during the first week of diagnosis was found to be the strongest predictor of fatigue reports during a follow-up 28 days post-diagnosis fatigue ( $k = 1$ ,  $OR=2.83$  95%CI [2.09;3.83]). This study remains ongoing and is now assessing over 4182 incident cases of COVID-19.

Klein et al. recruited their sample using social media 5 to 6 months (Group 5) post recovery and employed a snowball recruitment method. The prevalence of self-reported fatigue was found to be 21.90% ( $K = 1$ ,  $ER = 0.977$ , 95%CI [0.960, 0.986]) 180 days post-PCR diagnosis.

## **6. Comparing fatigue in COVID-19 recovered patients with healthy controls**

Three studies compared individuals recovered from COVID-19 with healthy controls. The studies collected participants from inpatients[81], outpatients[102] and an epidemiological database[46]. Pooled analysis of fatigue data was conducted for the period between 76-97 days, and fatigue assessment for all studies was in the form of self-report. COVID-19 patients were found to have a 3.688 increase in relative risk of fatigue outcomes compared to non-COVID-19 exposed groups ( $k = 3$ ,  $RR = 3.688$ , 95%CI [2.502, 5.436],  $z = 6.592$ ,  $p < 0.001$ ;  $I^2 = 0\%$ ; see S-4). The heterogeneity within these studies was low.

One study[46] assessed fatigue over 3-time points in which the COVID-19 recovered group had an increased relative risk of fatigue across time points when compared to healthy controls. These follow-ups were conducted 16 days ( $n = 4021$ ,  $RR = 4.451$ , 95%CI [2.341, 8.464],  $p <$

0.001), 46 days ( $n = 3221$ ,  $RR = 4.696$ ,  $95\%CI [2.406, 9.163]$ ,  $p < 0.001$ ) and 76 days ( $n = 2821$ ,  $RR = 5.530$ ,  $95\%CI [2.746, 11.136]$ ,  $p < 0.001$ ) following recovery. However, this is likely explained by higher attrition in the post-COVID-19 group compared to the control group. Notably, there were not enough data points to conduct a meta-analysis.

## **7. Fatigue in Covid-19 PCR negative vs PCR positive patients**

Two studies had data from discharged inpatients comparing those who retested PCR positive to those who were persistently PCR negative. No significant difference was found between patients identified as recovered from COVID-19 and patients retested positive for COVID-19 ( $k = 2$ ,  $RR = 0.806$ ,  $95\%CI [0.476, 1.363]$ ,  $p = 0.420$ ,  $I^2 = 53.02\%$ ; see S-4).

## **8. Gender and fatigue reports amongst COVID-19 recovered patients.**

Eight studies had data comparing males with females in COVID-19 recovered patients from both inpatient[79 81 82 88 89 105] and outpatient[92] settings and epidemiological datasets[75]. Females were more likely to self-report fatigue between 84-180 days of follow-up (Group 3-6) in pooled data from 4 studies ( $k = 4$ ,  $OR = 1.782$ ,  $95\%CI [1.531, 2.870]$ ,  $z = 3.366$ ,  $p = 0.001$ ,  $I^2 = 52.51\%$ ; see S-4). Sensitivity analysis in which only studies from Groups 2 to 3 were included further replicated the observed gender effects ( $k = 3$ ,  $OR = 2.096$ ,  $95\%CI [1.531, 2.870]$ ,  $z = 4.620$ ,  $p < 0.001$ ,  $I^2 = 0\%$ ), and heterogeneity for this analysis was low. However, this difference disappeared when fatigue was assessed using rating scales (see S-4) in two studies across two time points of 12-48 days ( $k = 2$ ,  $OR = 1.254$ ,  $95\%CI [0.0.273, 5.756]$ ,  $p = 0.771$ ,  $I^2 = 89.92\%$ ), and 72 to 81 days post-COVID-19 recovery ( $k = 2$ ,  $OR = 1.503$ ,  $95\%CI [0.456, 4.951]$ ,  $p = 0.503$ ,  $I^2 = 90.63\%$ ).

## **9. Fatigue in Severe vs. Non-Severe SARS-CoV-2 patients**

Two studies similar in design and duration of follow-ups, compared recovered individuals with severe COVID-19 and non-severe COVID-19 related illnesses. When examining outcomes 54 to 97 days following recovery, individuals recovering from severe cases of COVID-19 did not significantly differ from one another with respect to fatigue ( $OR = 1.344$ ,  $95\%CI [0.958, 1.886]$ ,  $z = 1.711$ ,  $p = 0.087$ ,  $I^2 = 0\%$ ; see S-4) and other chronic symptoms[81 94]. Data from 2 other studies, which could not be pooled due to differences in study design, had similar findings; in which no difference was observed during the first month following PCR negative findings ( $OR = 1.181$ ,  $95\%CI [0.262, 5.326]$ ,  $p = 0.829$ ), and 75 days following discharge in which fatigue was assessed using the Chalder Fatigue Scale ( $OR = 0.711$ ,  $95\%CI [0.397, 1.274]$ ,  $p = 0.252$ ). Similarly, no significant difference was detected when evaluating evidence comparing patients discharged from the ICU and hospital during a follow-up within the second and third month of

recovery ( $k = 2$ , OR = 0.991, 95%CI [0.332, 2.960],  $z = -0.017$ ,  $p = 0.987$ ,  $I^2 = 60.23\%$ ; see S-4) in which fatigue was assessed using validated scales, and second and fourth month in which fatigue was self-reported ( $k = 2$ , OR = 1.001, 95%CI [0.363, 2.762],  $z = 0.002$ ,  $p > 0.999$ ,  $I^2 = 27.18\%$ ; see S-4).

In contrast, Huang et al. found within a sample of 1733 COVID-19 recovered cases that had previously received care in the form of a high-flow nasal cannula for oxygen therapy, non-invasive ventilation or invasive mechanical ventilation were 2.73 times (OR = 2.725, 95%CI [1.694, 4.381]) more likely to experience post-COVID fatigue when compared to patients that had previously received no supplementary oxygen. Perhaps the divergent findings may be linked to the different ways in which severity is defined. A more objective measure of severity was utilized in the study, which showed a difference between the severe and non-severe groups.

## 10. Biomarkers and Post-COVID fatigue

Two studies examined immunological markers and their association with fatigue in patients that recovered from COVID-19. These studies were not pooled due to design differences in fatigue assessments. With regard to the two-point estimates, Liang et al. found no significant effect on fatigue outcomes when examining the role of CD3 ( $p > 0.05$ ), CD4 ( $p > 0.05$ ), CD8 ( $p > 0.05$ ) lymphocytes. Furthermore, both pro-inflammatory IL-6 ( $p > 0.05$ ), and CRP ( $p > 0.05$ ) were nonsignificant predictors of fatigue 90 days following PCR negative testing. This finding was mirrored by Townsend et al. in which lymphocytes ( $p > 0.05$ ), IL-6 ( $p > 0.05$ ) and CRP ( $p > 0.05$ ) were nonsignificant predictors of fatigue 72 days post-hospital discharge. However, patients recovered from COVID-19 within the Liang et al.'s sample were found to be 94.76 times more likely to experience fatigue for each unit increase in serum troponin-I (95%CI [24.935, 360.149],  $p < 0.001$ ), suggesting cardiovascular implications. However, the current review did not have the necessary data points to evaluate this meta-analytically.

## 11. Country of origin and fatigue

Extracted studies provided sufficient data points for comparison of self-reported fatigue in Asia, North-America, and Europe within the first six months of recovery from COVID-19. Self-reported fatigue was dependent on the continent of origin when comparing data points from Europe, North-America, and Asia ( $Q = 0.424$ ,  $df = 2$ ,  $p = 0.016$ ). Europe had the highest levels of self-reported fatigue post-recovery from COVID-19 ( $K = 14$ , ER = 0.546, 95%CI [0.389, 0.695],  $I^2 = 91.37\%$ ), followed by North-America ( $K = 7$ , ER = 0.300, 95%CI [0.149, 0.510],  $I^2 = 97.58\%$ ) and Asia ( $K = 9$ , ER = 0.225, 95%CI [0.116, 0.392],  $I^2 = 98.83\%$ ). Heterogeneity was high within the continental data points. However, multivariate meta-regression determined that the significant

variance explained by continental differences was robust as it remained significant ( $k = 30$ ,  $Q = 11.44$ ,  $df = 2$ ,  $p = 0.0033$ ) when holding recruitment setting constant.

## 12. Moderator analysis

Meta-regression was employed to examine the explained variance between point estimates and only included studies assessed to be of fair or good quality. Studies with repeated measures were excluded from the moderation analysis. When considering the first six months following COVID-19 recovery, the comparison between self-reported fatigue and fatigue assessed using validated scales did not significantly differ regarding COVID-19 prevalence ( $k = 27$ ,  $Q = 0.07$ ,  $df = 1$ ,  $p = 0.7931$ ).

All further moderation analyses were carried out using self-reported fatigue. The association between COVID-19 recovery and fatigue was not found to be dependent on the use of PCR negative testing to define recovery ( $k = 20$ ,  $Q = 0.76$ ,  $df = 1$ ,  $p = 0.3819$ ), average sample age ( $k = 18$ ,  $z = 0.379$ ,  $p = 0.379$ ), sample gender proportions ( $k = 20$ ,  $z = -1.78$ ,  $p = 0.076$ ), proportions of Diabetes Mellitus ( $k = 20$ ,  $z = 1.51$ ,  $p = 0.131$ ) or the sample prevalence of COPD ( $k = 12$ ,  $z = 0.85$ ,  $p = 0.394$ ). However, the association between COVID-19 recovery and fatigue was found to be dependent on recruitment setting ( $k = 20$ ,  $R^2 = 0.12$ ,  $Q = 17$ ,  $df = 3$ ,  $p = 0.0007$ ), and hypertension ( $k = 20$ ,  $R^2 = 0.01$ ,  $\beta = 2.81$ ,  $z = 2.01$ ,  $p = 0.044$ ). Overall, when considering 6 months following COVID-19 recovery, the length since recovery was not a significant mechanism of change for the association between COVID-19 exposure and post-recovery fatigue outcomes ( $K = 20$ ,  $z = 0.28$ ,  $p = 0.778$ ), even when holding patient setting constant ( $k = 20$ ,  $z = -0.23$ ,  $p = 0.814$ ).

## Discussion

This systematic review shows that self-reported fatigue after recovery from COVID-19 infection can last up to 6 months based on the longest duration studies. Patients in the post-acute stage of COVID-19 were 3.7 times more at risk for onset of fatigue compared to healthy controls. Between 30% to 60% of inpatient and outpatient treated patients reported fatigue. However, at the population level, the proportion of COVID-19 recovered patients suffering fatigue may be lower (i.e., < 10%). The highest proportion of fatigue (i.e., up to 90%) was amongst those persons who were recruited through social media and COVID-19 apps. This could be the effect of self-selection as those with persistent symptoms are more likely to use these channels to report on their health. PCR negative to confirm recovery did not influence fatigue. Even when the PCR test is negative, non-viral shedding may continue to occur[114], which may explain this finding.

There were insufficient number of studies comparing self-report to the assessment of fatigue through rating scales. However, in females, fatigue was higher compared to males but only on



self-report and not on assessments using rating scales. The severity of COVID-19 did not appear to moderate the expression of fatigue. This maybe a result of how disease severity is defined (e.g., based on admission to general wards or to ICU), which could be dependent on multiple factors, including local admission protocols. A more precise definition of severity used in at least one study did show an increase in self-reported fatigue in those deemed more unwell.

Surprisingly, age did not have an effect on self-report or rating scale scores of fatigue. Since mortality is higher in older adults, the survivors may have fewer symptoms overall. Similarly, our analysis could not assess the influence of chronic disease comorbidity. The data on comorbidities reported in publications does not allow accurate quantification of the chronic disease burden. This would require access to individual patient data.

There is an effect of continent of origin (see S-7), but it is possible that this may be due to reliance on self-report rather than the use of more objective fatigue measurement instruments. Reinfection measured through PCR positive seroconversion did not appear to influence the proportion of people reporting fatigue. There are initial findings of links with biomarkers; however, this will require additional studies to confirm persistent associations.

### **Limitations and Strengths**

To the best of our knowledge, this is the first systematic review examining fatigue post-recovery from COVID-19 across a wide range of individuals and settings spanning several countries. However, the findings were affected by significant heterogeneity in study design, duration, population, method of assessment of fatigue, and more. In addition, our search was restricted to articles in English, French, and Spanish. Based on JBI methodology, the evidence for prognosis was level 3.a, and there was a wide range of study designs restricting definitive conclusions on quantifying fatigue post-recovery from COVID-19. The study highlights that clinical populations are at risk for persistent fatigue. This could inform how advice is given to those who have been treated for SARS-Cov-2 infection in the hospital or outpatient settings. We did not have information to analyse the effect of different waves of the infection.

### **Future research and application to clinical practice**

Health policy and healthcare leadership must prepare for a longer-term management plan for COVID-19 as there are significant needs beyond recovery from the acute infection. Fatigue, along with other symptoms, may also affect the ability to function and work. This may have a significant economic impact as well as an impact on the lives of significant others in the patients' lives. Fatigue and its economic impact has been studied[71]. Future research should focus on more objective assessments of fatigue and standardized follow-up of post-COVID-19 patients. In the interest of public health, it should be possible to share anonymized individual data of persistent post-COVID-19 symptoms. New variants of coronavirus may have a different



profile of fatigue and this warrants further research. Finally, more research is needed into the pathogenesis of what may be a range of long-term syndromes.

### **Conflict of Interest**

The authors declare that they have no conflict of interest.

### **Funding Statement**

This research received no specific grant from any funding agency, commercial or not-for-profit sectors.

### **Author contributions**

S.R., T.T., S.K., S.J., and T.B. contributed to the design and conception of the study. S.R., S.G., and T.B. were involved in screening the texts for inclusion in the review. S.G. and T.B. extracted the data. T.B. and S.R. led the analysis and interpretation of data. S.R. and T.B. led the manuscript's write-up, and T.T. contributed to the manuscript write-up. S.R. and T.B. contributed to the analysis and interpretation of the synthesis. All other authors provided a critical review of the manuscript and assisted with revising the manuscript. T.B., coordinated and S.R., supervised the systematic review. All authors approved the final manuscript for submission.

### **References**

1. Allam Z. The First 50 days of COVID-19: A Detailed Chronological Timeline and Extensive Review of Literature Documenting the Pandemic. *Surveying the Covid-19 Pandemic and its Implications* 2020:1
2. WHO. WHO Director-General's opening remarks at the media briefing on COVID-19–11 March. 2020
3. Taquet M, Luciano S, Geddes JR, Harrison PJ. Bidirectional associations between COVID-19 and psychiatric disorder: retrospective cohort studies of 62 354 COVID-19 cases in the USA. *The Lancet Psychiatry* 2020
4. Bo H-X, Li W, Yang Y, et al. Posttraumatic stress symptoms and attitude toward crisis mental health services among clinically stable patients with COVID-19 in China. *Psychological medicine* 2020:1-2
5. Zhang J, Lu H, Zeng H, et al. The differential psychological distress of populations affected by the COVID-19 pandemic. *Brain, behavior, and immunity* 2020
6. Mazza MG, De Lorenzo R, Conte C, et al. Anxiety and depression in COVID-19 survivors: Role of inflammatory and clinical predictors. *Brain, behavior, and immunity* 2020;**89**:594-600
7. Vindegaard N, Benros ME. COVID-19 pandemic and mental health consequences: Systematic review of the current evidence. *Brain, behavior, and immunity* 2020;**89**:531-42

8. Tamsah M-H, Al-Sohime F, Alamro N, et al. The psychological impact of COVID-19 pandemic on health care workers in a MERS-CoV endemic country. *Journal of infection and public health* 2020;**13**(6):877-82
9. Islam SD-U, Bodrud-Doza M, Khan RM, Haque MA, Mamun MA. Exploring COVID-19 stress and its factors in Bangladesh: a perception-based study. *Heliyon* 2020;**6**(7):e04399
10. Fisher JR, Tran TD, Hammarberg K, et al. Mental health of people in Australia in the first month of COVID-19 restrictions: a national survey. *Medical journal of Australia* 2020;**213**(10):458-64
11. Zhang SX, Wang Y, Rauch A, Wei F. Unprecedented disruption of lives and work: Health, distress and life satisfaction of working adults in China one month into the COVID-19 outbreak. *Psychiatry research* 2020;**288**:112958
12. Mamun MA, Ullah I. COVID-19 suicides in Pakistan, dying off not COVID-19 fear but poverty?—The forthcoming economic challenges for a developing country. *Brain, behavior, and immunity* 2020
13. Mazza C, Ricci E, Biondi S, et al. A nationwide survey of psychological distress among Italian people during the COVID-19 pandemic: immediate psychological responses and associated factors. *International journal of environmental research and public health* 2020;**17**(9):3165
14. Gavriatopoulou M, Korompoki E, Fotiou D, et al. Organ-specific manifestations of COVID-19 infection. *Clinical and experimental medicine* 2020:1-14
15. Galeotti C, Bayry J. Autoimmune and inflammatory diseases following COVID-19. *Nature Reviews Rheumatology* 2020;**16**(8):413-14
16. Pouletty M, Borocco C, Ouldali N, et al. Paediatric multisystem inflammatory syndrome temporally associated with SARS-CoV-2 mimicking Kawasaki disease (Kawa-COVID-19): a multicentre cohort. *Annals of the rheumatic diseases* 2020;**79**(8):999-1006
17. Meinhardt J, Radke J, Dittmayer C, et al. Olfactory transmucosal SARS-CoV-2 invasion as a port of central nervous system entry in individuals with COVID-19. *Nature neuroscience* 2020:1-8
18. Mao L, Jin H, Wang M, et al. Neurologic manifestations of hospitalized patients with coronavirus disease 2019 in Wuhan, China. *JAMA neurology* 2020;**77**(6):683-90
19. Liotta EM, Batra A, Clark JR, et al. Frequent neurologic manifestations and encephalopathy-associated morbidity in Covid-19 patients. *Annals of clinical and translational neurology* 2020;**7**(11):2221-30
20. Vaira LA, Salzano G, Deiana G, De Riu G. Anosmia and ageusia: common findings in COVID-19 patients. *The Laryngoscope* 2020
21. Mutiawati E, Fahriani M, Mamada SS, et al. Anosmia and dysgeusia in SARS-CoV-2 infection: incidence and effects on COVID-19 severity and mortality, and the possible pathobiology mechanisms—a systematic review and meta-analysis. *F1000Research* 2021;**10**(40):40
22. Helms J, Kremer S, Merdji H, et al. Neurologic features in severe SARS-CoV-2 infection. *New England Journal of Medicine* 2020;**382**(23):2268-70
23. Chen N, Zhou M, Dong X, et al. Epidemiological and clinical characteristics of 99 cases of 2019 novel coronavirus pneumonia in Wuhan, China: a descriptive study. *The Lancet* 2020;**395**(10223):507-13
24. Saniasiaya J, Kulasegarah J. Dizziness and COVID-19. *Ear, Nose & Throat Journal* 2021;**100**(1):29-30
25. Sampaio Rocha-Filho PA, Magalhães JE. Headache associated with COVID-19: Frequency, characteristics and association with anosmia and ageusia. *Cephalalgia* 2020;**40**(13):1443-51
26. Merkler AE, Parikh NS, Mir S, et al. Risk of ischemic stroke in patients with coronavirus disease 2019 (COVID-19) vs patients with influenza. *JAMA neurology* 2020;**77**(11):1366-72
27. Sweid A, Hammoud B, Bekelis K, et al. Cerebral ischemic and hemorrhagic complications of coronavirus disease 2019. *International Journal of Stroke* 2020;**15**(7):733-42
28. Allen WE, Altae-Tran H, Briggs J, et al. Population-scale longitudinal mapping of COVID-19 symptoms, behaviour and testing. *Nature Human Behaviour* 2020;**4**(9):972-82

29. Deng J, Zhou F, Hou W, et al. The prevalence of depression, anxiety, and sleep disturbances in COVID-19 patients: a meta-analysis. *Annals of the New York Academy of Sciences* 2020
30. Dai L-L, Wang X, Jiang T-C, et al. Anxiety and depressive symptoms among COVID-19 patients in Jiangnan Fangcang Shelter Hospital in Wuhan, China. *Plos one* 2020;**15**(8):e0238416
31. Fu L, Wang B, Yuan T, et al. Clinical characteristics of coronavirus disease 2019 (COVID-19) in China: a systematic review and meta-analysis. *Journal of Infection* 2020;**80**(6):656-65
32. Thabane M, Kottachchi D, Marshall J. Systematic review and meta-analysis: the incidence and prognosis of post-infectious irritable bowel syndrome. *Alimentary pharmacology & therapeutics* 2007;**26**(4):535-44
33. Seet RC, Quek AM, Lim EC. Post-infectious fatigue syndrome in dengue infection. *Journal of clinical virology* 2007;**38**(1):1-6
34. Moldofsky H, Patcai J. Chronic widespread musculoskeletal pain, fatigue, depression and disordered sleep in chronic post-SARS syndrome; a case-controlled study. *BMC neurology* 2011;**11**(1):1-7
35. Litleskare S, Rortveit G, Eide GE, Hanevik K, Langeland N, Wensaas K-A. Prevalence of irritable bowel syndrome and chronic fatigue 10 years after Giardia infection. *Clinical Gastroenterology and Hepatology* 2018;**16**(7):1064-72. e4
36. Lyons D, Frampton M, Naqvi S, Donohoe D, Adams G, Glynn K. Fallout from the Covid-19 pandemic—should we prepare for a tsunami of post viral depression? *Irish journal of psychological medicine* 2020;**37**(4):295-300
37. Shikova E, Reshkova V, Kumanova A, et al. Cytomegalovirus, Epstein-Barr virus, and human herpesvirus-6 infections in patients with myalgic encephalomyelitis/chronic fatigue syndrome. *Journal of medical virology* 2020;**92**(12):3682-88
38. Pedersen M, Asprusten TT, Godang K, et al. Predictors of chronic fatigue in adolescents six months after acute Epstein-Barr virus infection: a prospective cohort study. *Brain, behavior, and immunity* 2019;**75**:94-100
39. Komaroff AL. Is human herpesvirus-6 a trigger for chronic fatigue syndrome? *Journal of Clinical Virology* 2006;**37**:S39-S46
40. Hickie I, Davenport T, Wakefield D, et al. Post-infective and chronic fatigue syndromes precipitated by viral and non-viral pathogens: prospective cohort study. *Bmj* 2006;**333**(7568):575
41. Wei K-C, Huang M-S, Chang T-H. Dengue virus infects primary human hair follicle dermal papilla cells. *Frontiers in cellular and infection microbiology* 2018;**8**:268
42. Lee SH, Shin H-S, Park HY, et al. Depression as a mediator of chronic fatigue and post-traumatic stress symptoms in middle east respiratory syndrome survivors. *Psychiatry investigation* 2019;**16**(1):59
43. Proal A, Marshall T. Myalgic encephalomyelitis/chronic fatigue syndrome in the era of the human microbiome: persistent pathogens drive chronic symptoms by interfering with host metabolism, gene expression, and immunity. *Frontiers in pediatrics* 2018;**6**:373
44. Loa Y, Leonga H, Hsua L, et al. Autonomic dysfunction in recovered severe acute respiratory syndrome patients. *Canadian journal of neurological sciences* 2005;**32**(2):264-64
45. Pagani M, Lucini D. Chronic fatigue syndrome: a hypothesis focusing on the autonomic nervous system. *Clinical science* 1999;**96**(1):117-25
46. Cirulli E, Barrett KMS, Riffle S, et al. Long-term COVID-19 symptoms in a large unselected population. *medrxiv* 2020
47. Sami R, Soltaninejad F, Amra B, et al. A one-year hospital-based prospective COVID-19 open-cohort in the Eastern Mediterranean region: The Khorshid COVID Cohort (KCC) study. *PloS one* 2020;**15**(11):e0241537
48. Gousseff M, Penot P, Gallay L, et al. Clinical recurrences of COVID-19 symptoms after recovery: viral relapse, reinfection or inflammatory rebound? *Journal of Infection* 2020;**81**(5):816-46

49. Underhill R. Myalgic encephalomyelitis, chronic fatigue syndrome: an infectious disease. *Medical hypotheses* 2015;**85**(6):765-73
50. Maes M, Twisk FN. Chronic fatigue syndrome: Harvey and Wessely's (bio) psychosocial model versus a bio (psychosocial) model based on inflammatory and oxidative and nitrosative stress pathways. *BMC medicine* 2010;**8**(1):1-13
51. van der Werf SP, Prins JB, Vercoulen JH, van der Meer JW, Bleijenberg G. Identifying physical activity patterns in chronic fatigue syndrome using actigraphic assessment. *Journal of psychosomatic research* 2000;**49**(5):373-79
52. Lorusso L, Mikhaylova SV, Capelli E, Ferrari D, Ngonga GK, Ricevuti G. Immunological aspects of chronic fatigue syndrome. *Autoimmunity reviews* 2009;**8**(4):287-91
53. Carfi A, Bernabei R, Landi F. Persistent symptoms in patients after acute COVID-19. *Jama* 2020;**324**(6):603-05
54. Kamal M, Abo Omirah M, Hussein A, Saeed H. Assessment and characterisation of post-COVID-19 manifestations. *International Journal of Clinical Practice* 2020:e13746
55. Wang X, Xu H, Jiang H, et al. Clinical features and outcomes of discharged coronavirus disease 2019 patients: a prospective cohort study. *QJM: An International Journal of Medicine* 2020;**113**(9):657-65
56. Callard F, Perego E. How and why patients made Long Covid. *Social Science & Medicine* 2020;**268**:113426
57. Miyake E, Martin S. Long Covid: quantitative and qualitative analyses of online Long Haulers' experiences, emotions and practices in the UK. medRxiv 2020
58. Siegelman JN. Reflections of a COVID-19 long hauler. *JAMA* 2020;**324**(20):2031-32
59. Garrigues E, Janvier P, Kherabi Y, et al. Post-discharge persistent symptoms and health-related quality of life after hospitalization for COVID-19. *Journal of Infection* 2020;**81**(6):e4-e6
60. Inciardi RM, Lupi L, Zaccone G, et al. Cardiac involvement in a patient with coronavirus disease 2019 (COVID-19). *JAMA cardiology* 2020;**5**(7):819-24
61. Islam MF, Cotler J, Jason LA. Post-viral fatigue and COVID-19: lessons from past epidemics. *Fatigue: Biomedicine, Health & Behavior* 2020;**8**(2):61-69
62. Colombi D, Bodini FC, Petrini M, et al. Well-aerated lung on admitting chest CT to predict adverse outcome in COVID-19 pneumonia. *Radiology* 2020;**296**(2):E86-E96
63. Li S, Jiang L, Li X, et al. Clinical and pathological investigation of patients with severe COVID-19. *JCI insight* 2020;**5**(12)
64. Sivan M, Taylor S. NICE guideline on long covid: British Medical Journal Publishing Group, 2020.
65. Wade DT. Rehabilitation after COVID-19: an evidence-based approach. *Clinical Medicine* 2020;**20**(4):359
66. Gorna R, MacDermott N, Rayner C, et al. Long COVID guidelines need to reflect lived experience. *The Lancet* 2020
67. Halpin S, O'Connor R, Sivan M. Long COVID and chronic COVID syndromes. *Journal of medical virology* 2020
68. Jason LA, Taylor RR, Kennedy CL. Chronic fatigue syndrome, fibromyalgia, and multiple chemical sensitivities in a community-based sample of persons with chronic fatigue syndrome-like symptoms. *Psychosomatic Medicine* 2000;**62**(5):655-63
69. Yorkston KM, Johnson K, Boesflug E, Skala J, Amtmann D. Communicating about the experience of pain and fatigue in disability. *Quality of Life Research* 2010;**19**(2):243-51
70. Jason LA, Evans M, Brown M, Porter N. What is fatigue? Pathological and nonpathological fatigue. *PM&R* 2010;**2**(5):327-31

71. Assefi NP, Coy TV, Uslan D, Smith WR, Buchwald D. Financial, occupational, and personal consequences of disability in patients with chronic fatigue syndrome and fibromyalgia compared to other fatiguing conditions. *The Journal of rheumatology* 2003;**30**(4):804-08
72. Vahdaninia M, Omidvari S, Montazeri A. What do predict anxiety and depression in breast cancer patients? A follow-up study. *Social psychiatry and psychiatric epidemiology* 2010;**45**(3):355-61
73. Corwin EJ, Brownstead J, Barton N, Heckard S, Morin K. The impact of fatigue on the development of postpartum depression. *Journal of Obstetric, Gynecologic, & Neonatal Nursing* 2005;**34**(5):577-86
74. National Institute for Health and Care Excellence RCoGP, Healthcare Improvement Scotland SIGN. COVID-19 rapid guideline: managing the long term effects of COVID-19: NICE guideline, 2020.
75. Bliddal S, Banasik K, Pedersen OB, et al. Acute and persistent symptoms in non-hospitalized PCR-confirmed COVID-19 patients. medRxiv 2021
76. Moher D, Liberati A, Tetzlaff J, Altman DG, Group P. Preferred reporting items for systematic reviews and meta-analyses: the PRISMA statement. *PLoS medicine* 2009;**6**(7):e1000097
77. JBI. JBI Levels of Evidence. Secondary JBI Levels of Evidence 2013. [https://jbi.global/sites/default/files/2019-05/JBI-Levels-of-evidence\\_2014\\_0.pdf](https://jbi.global/sites/default/files/2019-05/JBI-Levels-of-evidence_2014_0.pdf).
78. Zhao Y-m, Shang Y-m, Song W-b, et al. Follow-up study of the pulmonary function and related physiological characteristics of COVID-19 survivors three months after recovery. *EClinicalMedicine* 2020;**25**:100463
79. Huang C, Huang L, Wang Y, et al. 6-month consequences of COVID-19 in patients discharged from hospital: a cohort study. *The Lancet* 2021
80. Liang L, Yang B, Jiang N, et al. Three-Month Follow-Up Study of Survivors of Coronavirus Disease 2019 after Discharge. *Journal of Korean medical science* 2020;**35**(47)
81. Xiong Q, Xu M, Li J, et al. Clinical sequelae of COVID-19 survivors in Wuhan, China: a single-centre longitudinal study. *Clinical Microbiology and Infection* 2021;**27**(1):89-95
82. El Sayed S, Shokry D, Gomaa SM. Post-COVID-19 fatigue and anhedonia: A cross-sectional study and their correlation to post-recovery period. *Neuropsychopharmacology Reports* 2020
83. Landi F, Carfi A, Benvenuto F, et al. Predictive factors for a new positive nasopharyngeal swab among patients recovered from covid-19. *American Journal of Preventive Medicine* 2021;**60**(1):13-19
84. de Graaf M, Antoni M, Ter Kuile M, et al. Short-term outpatient follow-up of COVID-19 patients: A multidisciplinary approach. *EClinicalMedicine* 2021:100731
85. Daher A, Balfanz P, Cornelissen C, et al. Follow up of patients with severe coronavirus disease 2019 (COVID-19): Pulmonary and extrapulmonary disease sequelae. *Respiratory medicine* 2020;**174**:106197
86. Knight D, Downes K, Munipalli B, et al. Symptoms and Clinical Outcomes of Coronavirus Disease 2019 in the Outpatient Setting. *SN Comprehensive Clinical Medicine*:1-8
87. Paneroni M, Simonelli C, Saleri M, et al. Muscle Strength and Physical Performance in Patients Without Previous Disabilities Recovering From COVID-19 Pneumonia. *American journal of physical medicine & rehabilitation* 2021;**100**(2):105-09 doi: <http://dx.doi.org/10.1097/PHM.0000000000001641>[published Online First: Epub Date]].
88. Venturelli S, Benatti S, Casati M, et al. Surviving COVID-19 in Bergamo Province: a post-acute outpatient re-evaluation. *Epidemiology & Infection* 2021:1-25
89. Halpin SJ, McIvor C, Whyatt G, et al. Postdischarge symptoms and rehabilitation needs in survivors of COVID-19 infection: A cross-sectional evaluation. *Journal of medical virology* 2021;**93**(2):1013-22
90. Characterization of prolonged COVID-19 symptoms in an outpatient telemedicine clinic. *Open forum infectious diseases*; 2020. Oxford University Press US.



91. Tenforde MW, Kim SS, Lindsell CJ, et al. Symptom duration and risk factors for delayed return to usual health among outpatients with COVID-19 in a multistate health care systems network—United States, March–June 2020. *Morbidity and Mortality Weekly Report* 2020;**69**(30):993
92. Townsend L, Dyer AH, Jones K, et al. Persistent fatigue following SARS-CoV-2 infection is common and independent of severity of initial infection. *Plos one* 2020;**15**(11):e0240784
93. D'Cruz RF, Waller MD, Perrin F, et al. Chest radiography is a poor predictor of respiratory symptoms and functional impairment in survivors of severe COVID-19 pneumonia. *ERJ Open Research* 2021;**7**(1)
94. Mandal S, Barnett J, Brill SE, et al. 'Long-COVID': a cross-sectional study of persisting symptoms, biomarker and imaging abnormalities following hospitalisation for COVID-19. *Thorax* 2020
95. Latronico N, Peli E, Rodella F, et al. Six-Month Outcome in Survivors of COVID-19 Associated Acute Respiratory Distress Syndrome. *Six-Month Outcome in Survivors of COVID-19 Associated Acute Respiratory Distress Syndrome* 2020
96. Persistent symptoms in hospitalized patients recovering from COVID-19 in Denmark. *Open Forum Infectious Diseases*; 2021.
97. Petersen MS, Kristiansen MF, Hanusson KD, et al. Long COVID in the Faroe Islands—a longitudinal study among non-hospitalized patients. *Clinical Infectious Diseases* 2020
98. Jacobs LG, Gourna Paleoudis E, Lesky-Di Bari D, et al. Persistence of symptoms and quality of life at 35 days after hospitalization for COVID-19 infection. *PloS one* 2020;**15**(12):e0243882
99. Contreras-Andrade RI, Juárez-González LI, Arellano-Montellano EI, Herrera-García JC. Persistencia de síntomas en pacientes después de la enfermedad por coronavirus (COVID-19) en un hospital de tercer nivel de Puebla, México. *Medicina Interna de México* 2020;**36**(6):789-93
100. Moradian ST, Parandeh A, Khalili R, Karimi L. Delayed Symptoms in Patients Recovered from COVID-19. Available at SSRN 3667840 2020
101. Townsend L, Dowds J, O'Brien K, et al. Persistent Poor Health Post-COVID-19 Is Not Associated with Respiratory Complications or Initial Disease Severity. *Annals of the American Thoracic Society* (ja)
102. Woo MS, Malsy J, Pöttgen J, et al. Frequent neurocognitive deficits after recovery from mild COVID-19. *Brain communications* 2020;**2**(2):fcaa205
103. Horvath L, Lim JWJ, Taylor JW, et al. Smell and taste loss in COVID-19 patients: assessment outcomes in a Victorian population. *Acta Oto-Laryngologica* 2020:1-5
104. Prolonged and late-onset symptoms of coronavirus disease 2019. *Open forum infectious diseases*; 2020. Oxford University Press US.
105. Sykes DL, Holdsworth L, Jawad N, Gunasekera P, Morice AH, Crooks MG. Post-COVID-19 Symptom Burden: What is Long-COVID and How Should We Manage It? *Lung* 2021:1-7
106. Su Y, Zhu L-S, Gao Y, et al. Clinical characteristics of Covid-19 patients with re-positive test results: an observational study. *medRxiv* 2020
107. Klein H, Asseo K, Karni N, et al. Onset, duration, and persistence of taste and smell changes and other COVID-19 symptoms: longitudinal study in Israeli patients. *medRxiv* 2020
108. Clavario P, De Marzo V, Lotti R, et al. Assessment of functional capacity with cardiopulmonary exercise testing in non-severe COVID-19 patients at three months follow-up. *medRxiv* 2020
109. Savarraj JP, Burkett AB, Hinds SN, et al. Three-month outcomes in hospitalized COVID-19 patients. *medRxiv* 2020
110. Sudre CH, Murray B, Varsavsky T, et al. Attributes and predictors of Long-COVID: analysis of COVID cases and their symptoms collected by the Covid Symptoms Study App. *medRxiv* 2020
111. Chun HJ, Coutavas E, Pine A, et al. Immuno-fibrotic drivers of impaired lung function in post-COVID-19 syndrome. *medRxiv* 2021

112. Quilty BJ, Clifford S, Hellewell J, et al. Quarantine and testing strategies in contact tracing for SARS-CoV-2: a modelling study. *The Lancet Public Health* 2021
113. Bikbov B, Bikbov A. Maximum incubation period for COVID-19 infection: do we need to rethink the 14-day quarantine policy? *Travel Medicine and Infectious Disease* 2021;**40**:101976
114. Agarwal V, Venkatakrishnan A, Puranik A, et al. Long-term SARS-CoV-2 RNA shedding and its temporal association to IgG seropositivity. *Cell death discovery* 2020;**6**(1):1-9



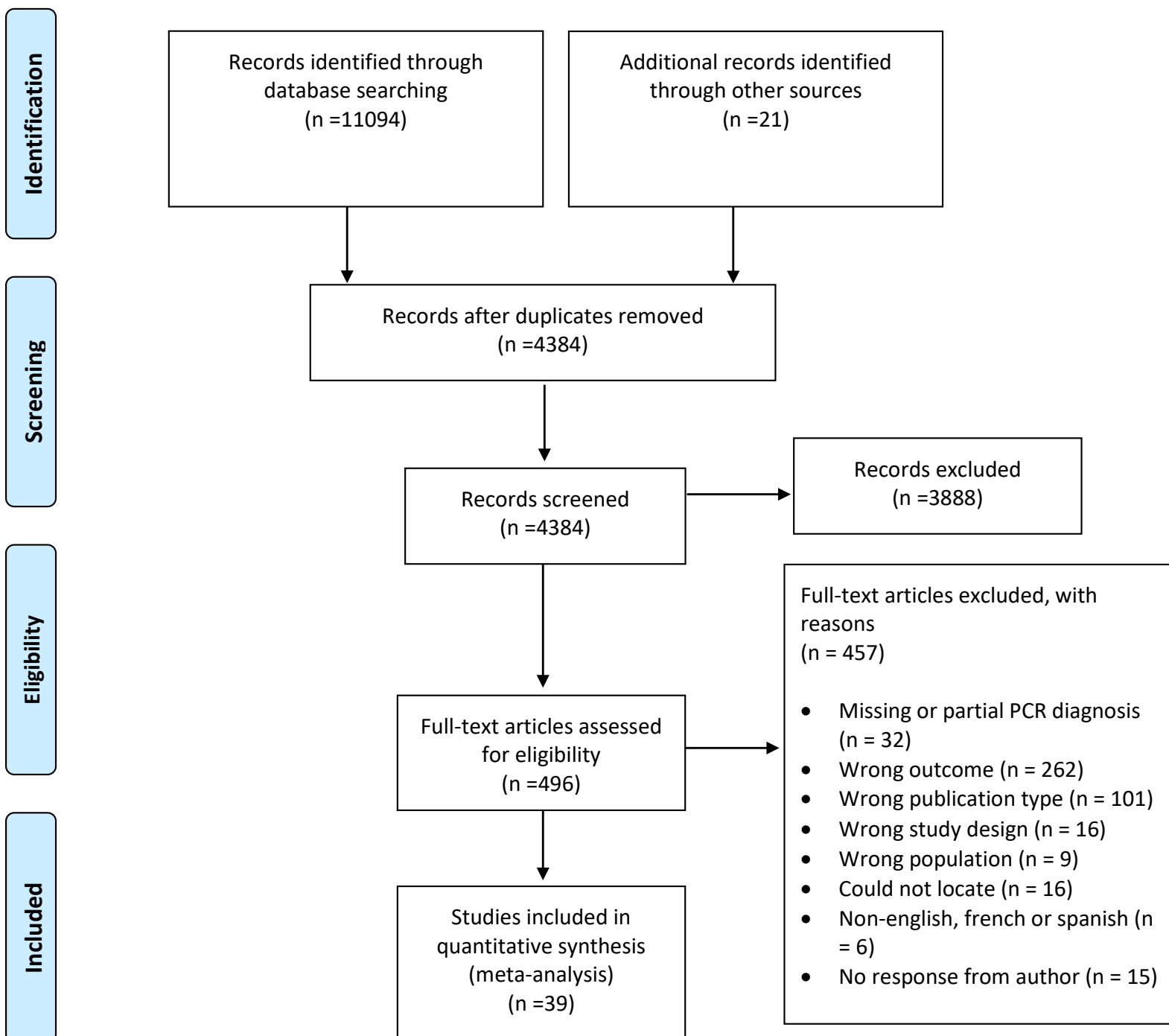


Figure 1. Preferred Reporting Items for Systematic Reviews and Meta-Analyses (PRISMA) flow diagram.

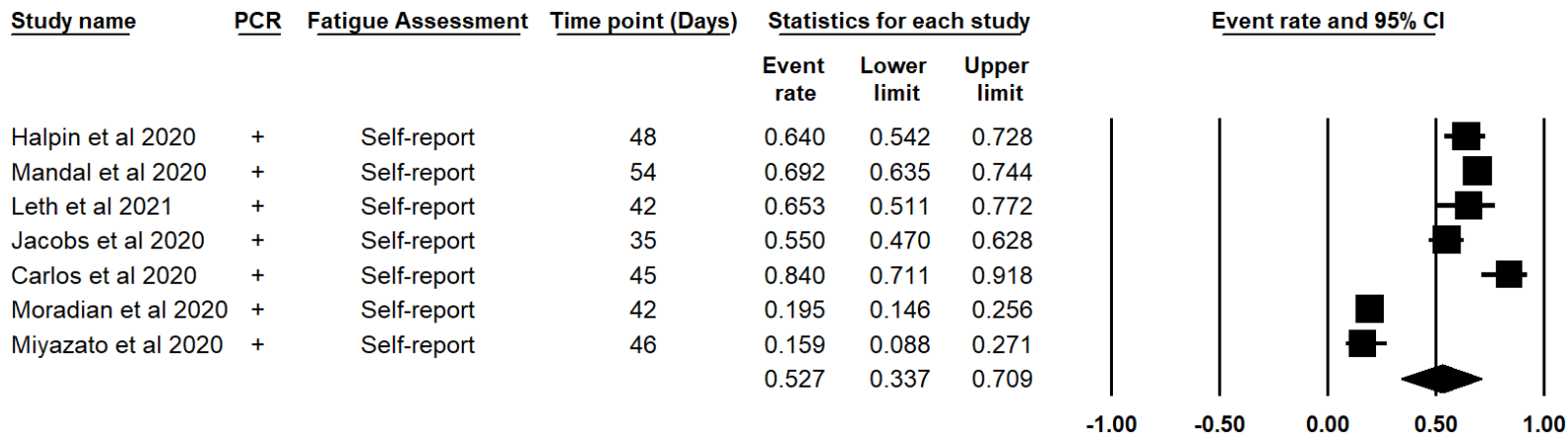


Figure 2a. Prevalence of self-reported fatigue within the second month following inpatient recovery defined by clinical assessment rather than PCR negative testing.

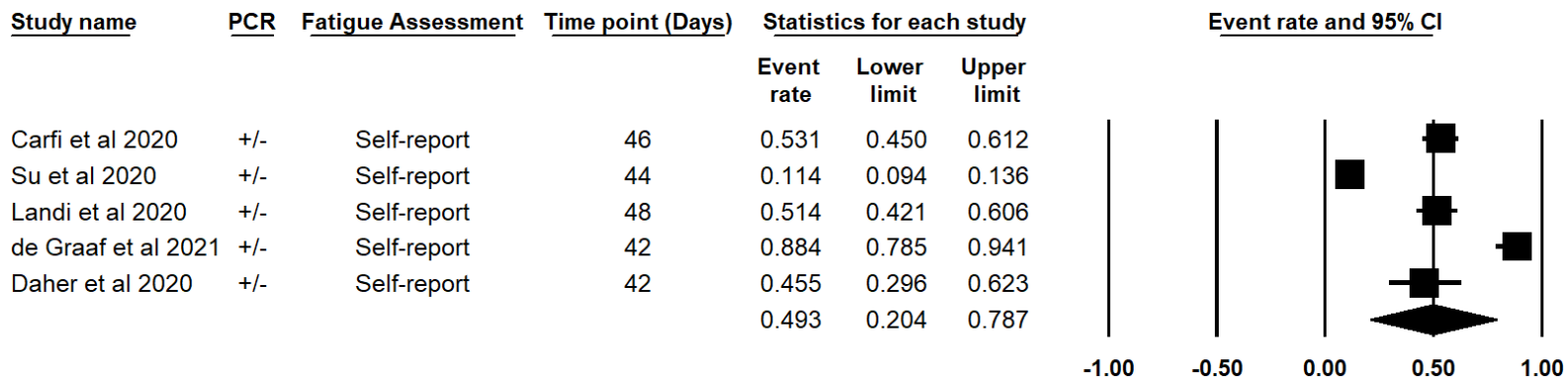


Figure 2b. Prevalence of self-reported fatigue within the first month following inpatient recovery defined by PCR negative testing.

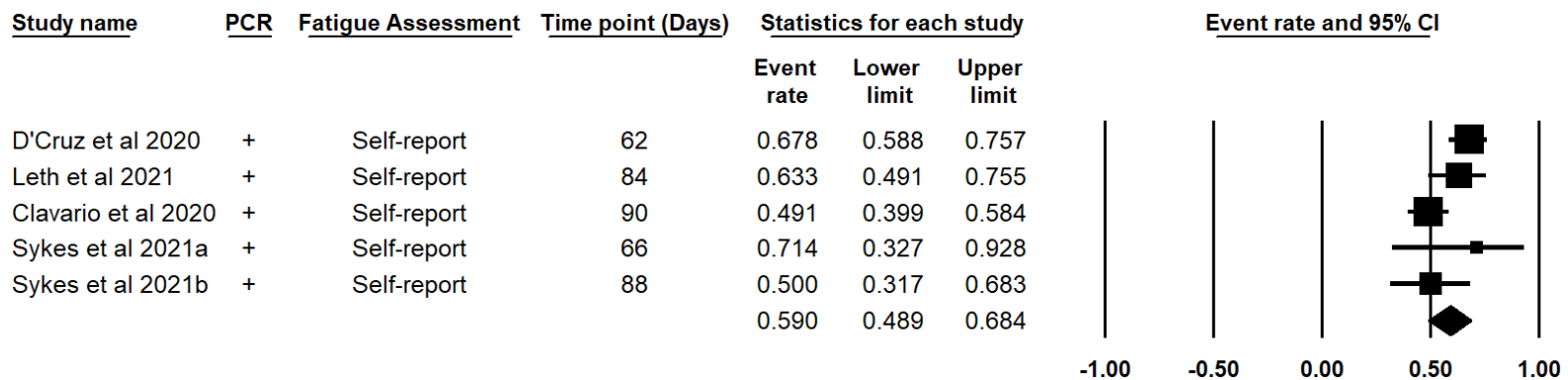


Figure 2c. Prevalence of self-reported fatigue within the third month following inpatient recovery defined by clinical assessment rather than PCR negative testing.

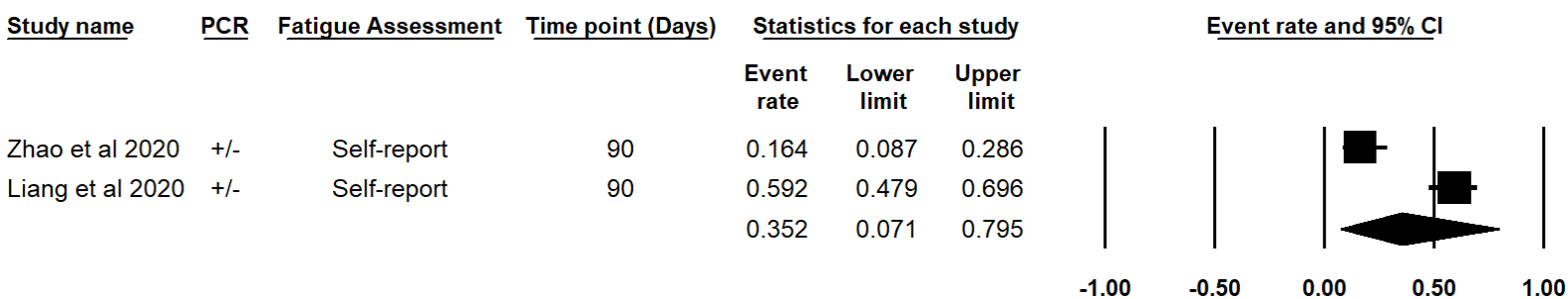


Figure 2d. Prevalence of self-reported fatigue within the third month following inpatient recovery defined by PCR negative testing.

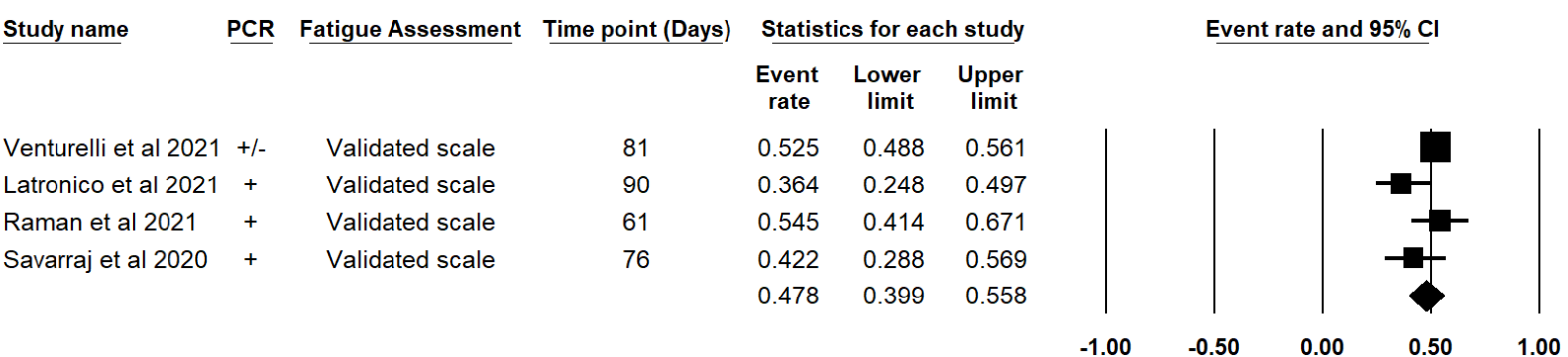


Figure 2e. Prevalence of fatigue within the third following inpatient recovery, in which fatigue was measured using validated fatigue scales.

Table 1. Characteristics of included studies								
Study	n*	Mean age**	Setting	Study location	PCR defined survival	Follow-up	Fatigue assessment	Analysis***
Carfi et al., 2020	143	56.5	Inpatient	Italy	Yes	46.3 days following recovery	Binary self-report	I
Kandil et al., 2020	287	32.3	Mixed	Egypt	Yes	20 days following discharge	Binary self-report	I
Zhao et al., 2020	55	47.7	Outpatient	China	Yes	90 days following discharge	Binary self-report	I
Su et al., 2020	880	56.9	Inpatient	China	Yes	44 days following discharge	Binary self-report	I, III
Wang et al., 2020	131	49	Inpatient	China	Yes	0, 14, 30 days following discharge	Binary self-report	I, IV,
Huang et al., 2021	1655	57	Inpatient	China	Yes	180 days following discharge	Binary self-report	I, II, IV,
Liang et al., 2020	76	41.3	Inpatient	China	Yes	90 days following discharge	Binary self-report	I, VIII
Xiong et al., 2021	538	52	Inpatient	China	Yes	97 days following discharge	Binary self-report	I, II, IV, VI,
El Sayed et al., 2020	200	36.58	Inpatient	Saudi Arabia	Yes	12 days following discharge	Fatigue Assessment Scale	I, II,
Landi et al., 2020	109	55.7	Inpatient	Italy	Yes	47.4 days following discharge	Binary self-report	I, III
de Graaf et al., 2021	69	60.8	Inpatient	Netherlands	Yes	42 days following discharge	Binary self-report	I, V
Daher et al., 2020	33	64	Inpatient	Germany	Yes	42 days following discharge	Binary self-report	I
Klein et al., 2020	105	35	Other	Israel	Yes	166 days following recovery	Binary self-report	I
Knight et al., 2021	101	51	Outpatient	USA	Yes	36 and 81 hours following discharge	Binary self-report	I
Paneroni et al., 2021	41	67.1	Inpatient	Italy	Yes	0 days (at discharge based on PCR Neg)	Borg Perceived Exertion Scale	I
Venturelli et al., 2021	767	63	Inpatient	Italy	Yes	81 days following discharge	Brief Fatigue Inventory	I, II
Halpin et al., 2020	100	Ward: 70.5 ICU: 58.5	Inpatient	United Kingdom	No/Not specified	48 days following discharge	Fatigue Assessment Scale	I, II, V
Cellai et al., 2020	496	47.5	Out-patient	USA	No/Not specified	28 days following recovery	Binary self-report	I, VII,
Tenforde et al., 2020	192	N.K	Mixed	USA	No/Not specified	16 days following recovery	Binary self-report	I
Townsend et al., 2020	128	49.5	Outpatient	Ireland	No/Not specified	72 days following discharge	Chalder Fatigue Scale	I, II, V, VIII
D'Cruz et al., 2020	115	58.7	Inpatient	United Kingdom	No/Not specified	76 days following recovery	Binary self-report	I
Mandal et al., 2020	276	59.9	Inpatient	United Kingdom	No/Not specified	54 days following discharge	Binary self-report	I, IV,
Latronico et al., 2021	55	59	Inpatient	Italy	No/Not specified	90 and 180 days following discharge	Fatigue Severity Scale	I
Leth et al., 2021	49	58	Inpatient	Denmark	No/Not specified	42 and 84 days following discharge	Binary self-report	I
Bliddal et al., 2021	198	Females: 44 Males: 46	registry/database	Denmark	No/Not specified	16 and 70 days following recovery	Binary self-report	I, II
Petersen et al., 2020	180	39.9	Mixed	Denmark	No/Not specified	111 days following recovery	Fatigue Impact Scale	I
Cirulli et al., 2020	205	56	registry/database	USA	No/Not specified	46 and 76 days following recovery	Binary self-report	I, VI,
Jacobs et al., 2020	149	57	Inpatient	USA	No/Not specified	7, 21 and 35 days following discharge	Binary self-report	I
Clavario et al., 2020	110	61.7	Inpatient	Italy	No/Not specified	90 days following discharge	Binary self-report	I
Carlos et al., 2020	50	50.5	Inpatient	Mexico	No/Not specified	30 to 60 day following discharge	Binary self-report	I
Moradian et al., 2020	200	55.58	Inpatient	Iran	No/Not specified	42 days following discharge	Binary self-report	I
Savarraj et al., 2020	45	50	Inpatient	USA	No/Not specified	76 days following recovery	Fatigue Severity Scale	I
Sudre et al., 2020	558	50	Other	United Kingdom Sweden	No/Not specified	14 and 42 days following recovery	Binary self-report	VII,
Townsend et al., 2021	153	48	Out-patient	Ireland	No/Not specified	61 days following recovery	Chalder Fatigue Scale	I, IV,
Woo et al., 2021	18	42.2	Out-patient	Germany	No/Not specified	71 days following recovery	Fatigue Assessment Scale	I, VI,
Chun et al., 2021	61	53	Mixed	USA	No/Not specified	49 days following recovery	Binary self-report	I
Horvath et al., 2020	102	45	registry/database	Australia`	No/Not specified	69 days following recovery	Binary self-report	I
Miyazato et al., 2020	61	48.1	Inpatient	Japan	No/Not specified	46 and 106 days following recovery	Binary self-report	I
Sykes et al., 2021	134	59.6	Inpatient	United kingdom	No/Not specified	61, 88, 113 and 147 days following discharge	Binary self-report	I, II, V

Note\*: Sample size in which fatigue was measured  
Note\*\*: The median was reported in studies that did not include mean sample age  
Note\*\*\*: I = Prevalence , II = Females vs. Males, III = PCR+ vs. PCR-, IV = Severe vs. Non-severe, V = ICU vs. Ward, VI = Survivors vs. Controls, VII = Continent of origin, VIII = Biomarkers and post-covid fatigue