

Full title: Regional atrophy and cognitive decline depend on definition of subjective cognitive decline

Running title: Atrophy observed in SCD varies based on definition of SCD

Cassandra Morrison¹ (PhD), Mahsa Dadar^{1,2} (PhD), Neda Shafiee¹ (MSc), Sylvia Villeneuve^{1,3,4,5} (PhD), D. Louis Collins^{1,5} (PhD) for Alzheimer's Disease Neuroimaging Initiative‡

¹McConnell Brain Imaging Centre, Montreal Neurological Institute, McGill University, Montreal, Quebec, Canada.

²Department of Radiology and Nuclear Medicine, Faculty of Medicine, Laval University

³Department of Psychiatry, McGill University, H3A 1A1, Montreal, Quebec, Canada

⁴Douglas Mental Health University Institute, Studies on Prevention of Alzheimer's Disease (StoP-AD) Centre, H4H 1R3, Montreal, Quebec, Canada

⁵Department of Neurology and Neurosurgery, McGill University, H3A 2B4, Montreal, Quebec, Canada

‡ Data used in preparation of this article were obtained from the Alzheimer's Disease Neuroimaging Initiative (ADNI) database (adni.loni.usc.edu). As such, the investigators within the ADNI contributed to the design and implementation of ADNI and/or provided data but did not participate in analysis or writing of this report. A complete listing of ADNI investigators can be found at: http://adni.loni.usc.edu/wp-content/uploads/how_to_apply/ADNI_Acknowledgement_List.pdf

Corresponding author:

Cassandra Morrison, Montreal Neurological Institute, 3801 University Street, Montreal QC, H3A 2B4 email: cassandra.morrison@mail.mcgill.ca

Keywords: Subjective cognitive decline, Magnetic resonance imaging, Deformation based morphometry

Acknowledgments: Data collection and sharing for this project was funded by the Alzheimer's Disease Neuroimaging Initiative (ADNI) (National Institutes of Health Grant U01 AG024904) and DOD ADNI (Department of Defense award number W81XWH-12-2-0012). ADNI is funded by the National Institute on Aging, the National Institute of Biomedical Imaging and Bioengineering, and through generous contributions from the following: AbbVie, Alzheimer's Association; Alzheimer's Drug Discovery Foundation; Araclon Biotech; BioClinica, Inc.; Biogen; Bristol-Myers Squibb Company; CereSpir, Inc.; Cogstate; Eisai Inc.; Elan Pharmaceuticals, Inc.; Eli Lilly and Company; EuroImmun; F. Hoffmann-La Roche Ltd and its affiliated company Genentech, Inc.; Fujirebio; GE Healthcare; IXICO Ltd.; Janssen Alzheimer

Immunotherapy Research & Development, LLC.; Johnson & Johnson Pharmaceutical Research & Development LLC.; Lumosity; Lundbeck; Merck & Co., Inc.; Meso Scale Diagnostics, LLC.; NeuroRx Research; Neurotrack Technologies; Novartis Pharmaceuticals Corporation; Pfizer Inc.; Piramal Imaging; Servier; Takeda Pharmaceutical Company; and Transition Therapeutics. The Canadian Institutes of Health Research is providing funds to support ADNI clinical sites in Canada. Private sector contributions are facilitated by the Foundation for the National Institutes of Health (www.fnih.org). The grantee organization is the Northern California Institute for Research and Education, and the study is coordinated by the Alzheimer's Therapeutic Research Institute at the University of Southern California. ADNI data are disseminated by the Laboratory for Neuro Imaging at the University of Southern California.

MD is supported by a scholarship from the Canadian Consortium on Neurodegeneration in Aging as well as an Alzheimer Society Research Program (ASRP) postdoctoral award. The Consortium is supported by a grant from the Canadian Institutes of Health Research with funding from several partners including the Alzheimer Society of Canada, Sanofi, and Women's Brain Health Initiative.

Funding information

Alzheimer's Disease Neuroimaging Initiative; This research was supported by a grant from the Canadian Institutes of Health Research

Abstract

Background: People with subjective cognitive decline (SCD) may be at increased risk for Alzheimer's disease (AD). However, not all studies have observed this increased risk. Inconsistencies may be related to different methods used to define SCD. The current project examined whether four methods of defining SCD (applied to the same sample) results in different patterns of atrophy and future cognitive decline between cognitively normal older adults with (SCD+) and without SCD (SCD-).

Methods: MRI scans and questionnaire data for 273 cognitively normal older adults from Alzheimer's Disease Neuroimaging Initiative were examined. To operationalize SCD we used four common methods: Cognitive Change Index (CCI), Everyday Cognition Scale (ECog), ECog + Worry, and Worry only. A previously validated MRI analysis method (SNIPE) was used to measure hippocampal *volume* and *grading*. Deformation-based morphometry was performed to examine volume at regions known to be vulnerable to AD. Logistic regressions were completed to determine whether diagnostic method was associated with volume differences between SCD- and SCD+. Linear mixed effects models were performed to examine the relationship between the definitions of SCD and future cognitive decline.

Results: Results varied between the four methods of defining SCD. Left hippocampal grading was lower in SCD+ than SCD- when using the CCI ($p=.041$) and Worry ($p=.021$) definitions. The right ($p=.008$) and left ($p=.003$) superior temporal regions were smaller in SCD+ than SCD-, but only with the ECog. SCD+ was associated with greater future cognitive decline measured by Alzheimer's Disease Assessment Scale, but only with the CCI definition. In contrast, only the ECog definition of SCD was associated with future decline on the Montreal Cognitive Assessment.

Conclusion: The current findings suggest that the various methods used to differentiate between SCD- and SCD+ influence whether volume differences and findings of cognitive decline are observed between groups in this retrospective analysis.

Introduction

In 2020, there were approximately 50 million people worldwide living with dementia. Alzheimer's disease (AD) accounts for around 50-75% of these cases (1). People with AD experience progressive declines in cognitive functioning, including memory and thinking, with symptoms interfering with daily functioning (2). These symptoms may occur because of brain pathology, including excessive amyloid and tau build-up and neurodegeneration in regions associated with cognitive deficits (3). Recent work suggests that this neuropathology may be present for many years before the onset of behavioral symptoms that interfere with daily activities and cognitive functioning (4,5). Thus, much of the current AD research has been devoted to finding an early biomarker that can identify individuals with preclinical AD.

People with preclinical AD are cognitively normal but display AD pathology (5). Individuals meeting the criteria for preclinical AD may also report subjective cognitive decline (SCD), i.e., perceived deficits in memory and/or cognitive functioning in the absence of objective cognitive decline (6). Reports of SCD may occur up to 15 years before the onset of AD symptoms (7) and increases the likelihood of progression to clinically probable AD by up to five times (8). SCD may be one of the earliest clinical manifestations of AD (6) with AD pathology including amyloidosis and neurodegeneration being observed in people with SCD (see 7,8 for review).

Much research has shown that people with SCD show increased neurodegenerative pathology compared to cognitively normal older adults without SCD. Nevertheless, results suggesting atrophy declines in people with SCD compared to those without SCD are inconsistent. For example, while Jessen et al. (10) observed atrophy in the bilateral entorhinal cortex and not the hippocampus, Striepens et al. (11) reported reduced volume in both the bilateral entorhinal cortex and bilateral hippocampus in people with SCD relative to people without SCD. Different

methods used to classify SCD may underly the conflicting results regarding hippocampal volume between these studies. Jessen et al. recruited participants who sought medical help for their self-reported feeling of worsening memory with an onset in the last 5 years (10). On the other hand, Striepens et al. recruited participants who had both self and informant confirmation of memory impairment within the last 10 years (12). They may have observed reduced hippocampal in people with SCD because of including informant confirmation. Informant confirmation is a feature of SCD *plus* (people with SCD who have features that make them more likely to progress to AD) and might be a better predictor of objective performance as disease severity progresses (8,13). Therefore, the participants included in the Streipens et al. study may be closer to clinical decline than those recruited in the Jessen et al. study.

Inconsistencies in defining SCD lead to the development of the Subjective Cognitive Decline Initiative (SCD-I; 6). This working group developed a broad definition of pre-MCI SCD for research, which includes self-experienced persistent decline in cognitive capacity compared to a previously normal status and normal performance on standardized cognitive tests. MCI/AD, psychiatric conditions, neurological diseases, medical disorders, medications, or substance abuse cannot explain these self-perceived declines. Some other important features that may improve SCD identification include the study setting, *Apolipoprotein E (APOE)* status, memory vs non-memory domain complaints, informant confirmation, and concerns with SCD. The authors provide specific features that increase the likelihood of preclinical AD (SCD *plus*) in individuals with SCD include 1) SCD in memory (rather than other domains), 2) onset within the last 5 years, 3) age of onset ≥ 60 years, 4) worry/concern with SCD, and 5) feeling of worse performance than others of the same age. They also note that when studying SCD *plus*, confirmation of decline from an informant, presence of the *APOE* $\epsilon 4$ genotype, and AD biomarker evidence is important.

Despite the SCD-I working groups' recommendations (6), standards and features included in defining SCD have not been universally implemented. One concern is the lack of standardization of the methodologies used to capture SCD. The review by Wang et al. (9) provides further insight into this problem. Some studies use specific questionnaires to define SCD such as the Cognitive Change Index (CCI; 10), Everyday Cognition Scale (ECog; 12), or Memory Assessment Clinics Questionnaire (MAC-Q; 13), others use one or two questions (e.g., do you have memory declines; are you worried about those declines), while other studies use memory clinic consultation to define people with SCD. Several potential problems exist with this lack of standardization.

There may also be an association between neurodegeneration and perceived concern/worry since people with perceived worry have an increased risk of developing MCI (17). Few studies have examined the relationship between different SCD questionnaires. One study observed only a moderate correlation between the MAC-Q and the Subjective Memory Complaints (SMC) scale (18). Similarly, van Harten et al. (17) only found a moderate correlation between the ECog and Blessed Memory scale. These findings suggest that different SCD questionnaires may not be measuring the same construct and may influence the heterogeneous results regarding the association between SCD and early AD-biomarkers.

The goal of the current study was to examine whether brain atrophy and future cognitive decline observed between cognitive normal older adults with and without SCD vary between four methods of differentiating SCD. We also completed another analysis, including APOE ϵ 4 status and amyloid positivity as two factors in the model since they may be associated with increased risk for AD (see 7 for review). In this study, we examined the following regions of interest (ROIs): hippocampus, amygdala, lateral ventricles, and superior temporal regions. While there are many regions that have been shown to be associated with AD-pathology, several studies have observed

that the hippocampus may be sensitive to these changes in SCD+ populations (see (9) for review). When predicting who will convert to AD in cognitively healthy older adults, hippocampal changes have shown a prediction accuracy of 72.5% up to 7 years in advance (19). The superior temporal regions and amygdala were chosen for analysis as previous research has also shown that these regions have high prediction accuracy when examining conversion from SCD to MCI (20). The lateral ventricles have also shown to be more sensitive to detection of early changes in MCI rather than discriminating between MCI and AD (21).

Methods

Alzheimer's Disease Neuroimaging Initiative

Data used in the preparation of this article were obtained from the Alzheimer's Disease Neuroimaging Initiative (ADNI) database (adni.loni.usc.edu). The ADNI was launched in 2003 as a public-private partnership, led by Principal Investigator Michael W. Weiner, MD. The primary goal of ADNI has been to test whether serial magnetic resonance imaging (MRI), positron emission tomography (PET), other biological markers, and clinical and neuropsychological assessment can be combined to measure the progression of mild cognitive impairment (MCI) and early Alzheimer's disease (AD). The participants of this study are from the ADNI-2 cohort, between 55 and 90 years old at the time of recruitment. The ADNI-2 cohort participants were used because it was the first cohort to introduce the CCI questionnaire and define participants with significant memory concerns. For consistency with current research standards, we use the definition of subjective cognitive decline. The study received ethical approval from the review boards of all participating institutions. Written informed consent was obtained from participants or their study partner before the testing procedures began.

Participants

While there are 420 cognitively normal controls in the ADNI-2 cohort, participants were only included in this study if they had an MRI scan within 6 months of SCD questionnaire completion, and fully completed the questionnaires accessing SCD. A total of 280 total participants from the ADNI-2 dataset met the requirements for this study. The participants were separated into either cognitively normal controls without subjective cognitive decline (negative for subjective cognitive decline, or SCD-) or cognitively normal controls with subjective cognitive decline (positive for subjective cognitive decline, or SCD+)¹. Both groups had no objective evidence of cognitive impairment on cognitive tasks or the Clinical Dementia Rating and no signs of depression. Four separate definitions of SCD were used to differentiate the participants into either the SCD- or SCD+ group; therefore, the number of SCD- and SCD+ participants varied between each analysis as the criteria for SCD differed. Demographic information, by group, for each definition is presented in Table 1.

For Analysis One, participants were identified as having SCD if they had self-reported significant memory concern as quantified by a score of ≥ 16 on the first 12 items (representing memory changes) on the Cognitive Change Index (CCI). If the SCD was accompanied by informant concern they were excluded. For Analysis Two, the Everyday Cognition [ECog] scale (14) was used to differentiate between SCD- and SCD+. If a participant endorsed any item on the ECog with a score ≥ 3 (signifying consistent SCD) they were assigned to the SCD+ group. The SCD- group consisted of those who selected either better, no change, or questionable/occasionally worse. The third analysis separated groups base on the ECog scale and worry. The SCD+ participants had to self-report consistent SCD+ on any item from the ECog (again ≥ 3) as well as

¹ In this manuscript SCD+ refers to cognitive normal older adults with subjective cognitive decline and is not referring to SCD *plus* as defined by Jessen et al. (6).

indicate worry/concern about their cognitive decline. For the final analysis, participants were considered SCD+ based only if they indicated worry/concern about their memory/thinking abilities, irrespective of their CCI or ECog scores.

Structural MRI acquisition and processing

All included participants were imaged using a 3T scanner with T1-weight imaging parameters (for more information see the ADNI's official webpage for the MRI data acquisition protocol; <http://adni.loni.usc.edu/methods/mri-tool/mri-analysis/>). Baseline scans were download from the ADNI public website.

T1w scans for each participant were pre-processed through our standard pipeline in three steps: noise reduction (22), intensity inhomogeneity correction (23), and intensity normalization into range [0-100]. The pre-processed images were then both linearly (9 parameters: 3 translation, 3 rotation, and 3 scaling) (24) and nonlinearly (1 mm³ grid) (25) registered to the MNI-ICBM152-2009c average template (26). The quality of the linear and nonlinear registrations was visually verified by an experienced rater, and those that did not pass this quality control step were discarded (n = 7). The [¹⁸F]-AV45-PET data were downloaded from ADNI website.

Deformation based morphometry

DBM analysis was performed to measure local anatomical differences in the brain by estimating the Jacobian determinant of the inverse nonlinear deformation field using MNI MINC tools. Jacobian determinant values reflect the volume of each voxel relative to the corresponding voxel on the average template. A DBM value of 1 indicates similar volume to the corresponding voxel in the template, and values lower (higher) than one indicates regions smaller (larger) than the same area in the template.

An atlas-based approach was also used to examine mean volume differences for ROIs (lateral ventricles, superior temporal, and amygdala from CerebrA atlas (26)) estimated by integrating the Jacobian of the deformation field within the ROI.

SNIFE

Scoring by Nonlocal Image Patch Estimator (SNIFE) was used to measure the extent of Alzheimer's disease related pathology using the linearly registered preprocessed T1-weighted images (27). SNIFE estimates a similarity metric for each voxel in the region of interest (e.g., hippocampus), indicating how much that voxel's surrounding neighborhood resembles similar neighborhoods patches in a library of patients with probable Alzheimer's disease or cognitively healthy controls. Average SNIFE values in the region of interest can then be used to examine the overall level of AD-related *macroscopic* neurodegeneration in that region. Positive SNIFE grading scores indicate normal appearing hippocampi, whereas negative scores indicate presence of AD-like atrophy.

Statistical Analysis

All analyses were performed using MATLAB R2019b. Independent sample t-test were completed on the demographic information presented in Table 1. To investigate volume differences between SCD- and SCD+ participants we completed logistic regressions with ROI volume as the dependent variable and controlled for age, sex, and education. We performed separate logistic regression analyses for the four separate SCD definitions for each ROI. Additionally, we performed the analyses with and without *APOE e4* and amyloid status.

Linear mixed effects models were conducted to examine whether SCD diagnosis would influence future longitudinal cognitive scores. A total of 1421 time points for 273 participants were

included in the Alzheimer's Disease Assessment Scale–Cognitive Subscale (ADAS-13) model and 820 timepoints for 273 participants were included in the Montreal Cognitive Assessment (MoCA) model:

$$\text{CognitiveScore} \sim \text{Diagnosis} + \text{Age}_{BL} + \text{Sex} + \text{Education} + \text{Age}_{BL} * \text{Diagnosis} + (1 | \text{RID}) \quad (1).$$

We examined the power of this model to predict scores from the ADAS-13 and MoCA as the *CognitiveScore*. The categorical variable of interest was Diagnosis, indicating SCD- or SCD+ status based on each definition. The models also included Time from baseline, sex, and years of education as covariates. Subject ID was included as a categorical random effect. All continuous variables were z-scored before being entered into the model. To express the unit change of ADAS and MoCA scores, the estimate from the model was then multiplied by the standard deviation of the scores divided by the standard deviation of the time at baseline factor.

Linear regressions were also completed to examine whether definition of SCD influenced amyloid levels between SCD- and SCD+. Five participants did not complete the PET imaging and therefore were not included in this analysis. A total of 270 participants were included in the model:

$$\text{AV45} \sim \text{Diagnosis} + \text{Age} + \text{Sex} \quad (2).$$

Results

Demographics

Table 1 shows the demographic information and cognitive testing scores for all participants. No statistically significant differences in mean age, education, or male:female ratio between groups was observed. Figure 1 displays the participant overlap between the different methods of defining SCD.

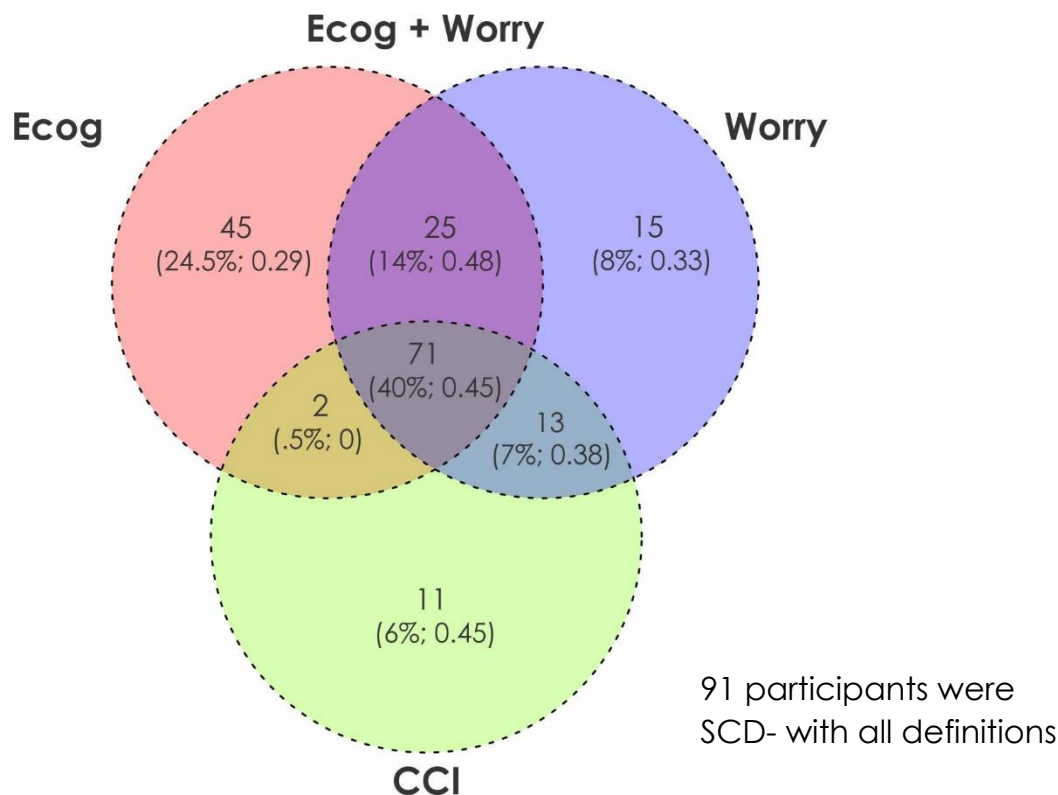


Figure 1: Venn Diagram representing the overlap of subjective cognitive decline (SCD) diagnosis between the four definitions of SCD. There was a total of 273 participants in the sample, 91/273 (33%) were SCD- with all definitions. The remaining 182 participants are shown in the Venn Diagram with the number of participants, the percentage of overall SCD+ sample, and the fraction of the sample that was amyloid positive. Overall, there were 72/182 (0.40) SCD participants that were amyloid positive. For the four SCD definitions, there were 97 SCD+ subjects defined by CCI, 143 SCD+ defined by ECog, 96 SCD+ defined by ECog & Worry and 124 defined by Worry only. Finally, only 40% of the SCD+ subjects are common between the four definitions.

Atlas-based DBM analysis

Table 2 summarizes the results of the logistic regression models for both DBM and SNIPE analysis. Figure 2 shows significant t-statistic values obtained for the categorical diagnosis variable (Subjective Cognitive Decline; SCD+ and SCD-) for only the six regions tested (left/right hippocampus, amygdala, and superior temporal gyrus). Green regions indicate ROIs that were examined but were not significantly different between the groups. There were few anatomical

differences detected by DBM. Only the right (OR = 0.72, 95% CI = -0.58 – -0.09, $p = .008$) and left (OR = 0.68, 95% CI = -0.64 – -0.01, $p = .003$) superior temporal regions were influenced by diagnosis when using the ECog-based definition. A trending effect of diagnosis was also observed in the right amygdala (OR = 0.79, 95% CI = -0.49 – 0.01, $p = .064$) for the ECog analysis. No other structures were significantly different for SCD+ and SCD- groups using the ECog definition. No structures were found to be different using the other SCD definitions. (All p-values reported after correction for multiple comparisons).

SNIFE Analysis

There was an effect of diagnosis on grading in the left hippocampus for both the CCI definition of SCD (OR = 0.74, 95% CI = -0.60 – -0.01, $p = .04$) and Worry (OR = 0.72, 95% CI = -0.62 – -0.05, $p = .02$), with an approaching significant effect for ECog + Worry definition (OR = -0.27, 95% CI = -0.56–0.02, $p = .065$).

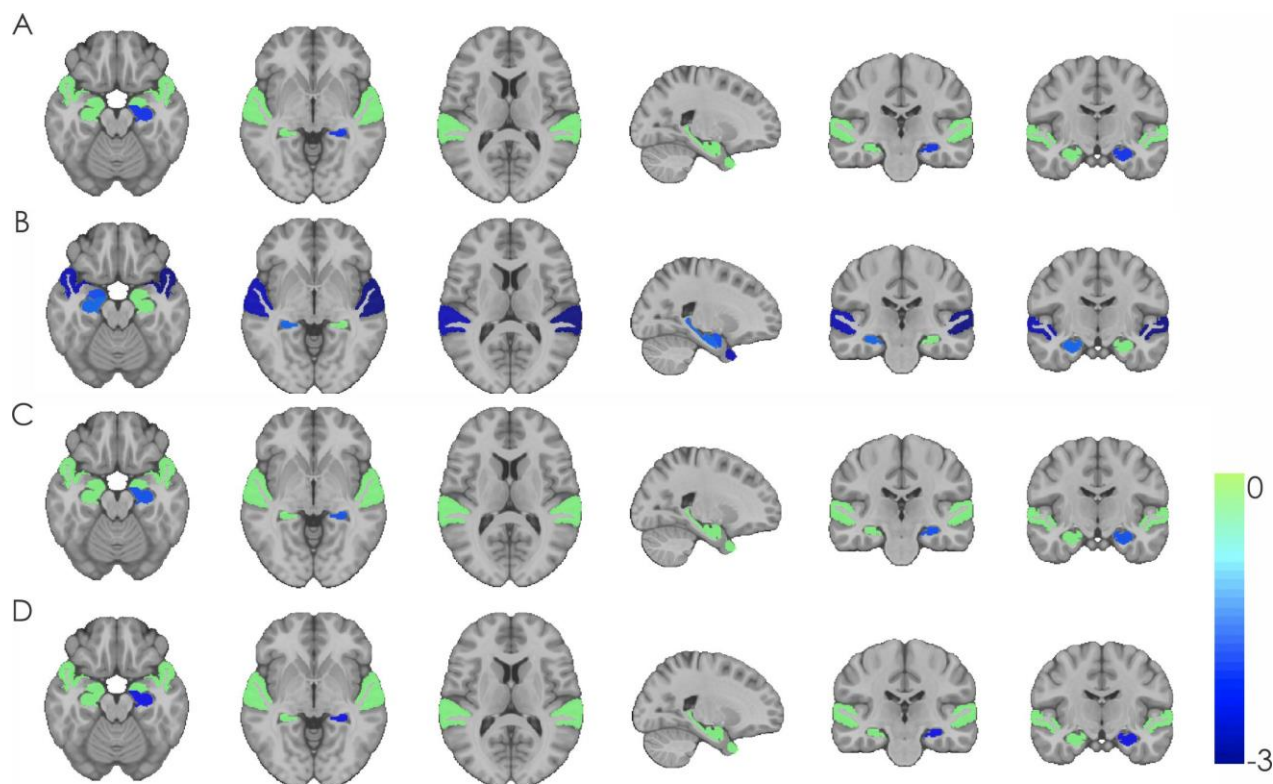


Figure 2: This figure shows significant t-statistic values obtained for the categorical diagnosis variable (Subjective Cognitive Decline; SCD+ and SCD-) for only the six regions tested (left/right hippocampus, amygdala, and superior temporal gyrus). Green regions indicate ROIs that were examined but were not significantly different between the groups. Colder colors indicate lower DBM values in SCD+ compared to SCD-. A) Cognitive Change Index analysis – smaller left hippocampal grading in SCD+ vs SCD-. B) Everyday Cognition Scale analysis – smaller right hippocampal grading, right amygdala, and right and left superior temporal regions in SCD+ vs SCD-. C) Everyday Cognition Scale + Worry analysis – smaller left hippocampal grading in SCD+ vs SCD-. D) Worry analysis – smaller left hippocampal grading in SCD+ vs SCD-.

Amyloid & APOE Status

As can be observed in Table 3 when amyloid positivity and *APOE e4* status were included in the models the differences due to diagnosis on volume did not significantly change. Amyloid positivity was significantly associated with volume for all SNIPE analyses, except for the ECog definition. On the other hand, *APOE* status was not associated with volume change in any of the ROIs or SCD definitions. As measured by AV-45, levels of amyloid did not differ between SCD- and SCD+ in

any of the analysis (see Table 4). Levels of amyloid deposition also did not differ between the SCD+ groups using the four definitions. *APOE e4+* status did not differ between SCD- and SCD+ populations or between SCD+ groups between the four definitions.

Cognitive Follow-up

Figure 3 displays the longitudinal change in cognitive scores for the ADAS and MoCA. For the ADAS, the only significant difference between SCD- and SCD+ was observed when using the CCI definition of SCD ($\beta=0.18$, $SE=0.09$, $t= 2.10$, $p=.036$). This result indicates that people who were SCD+ had 0.40 units more of ADAS13 than those who were SCD. The model also revealed a significant effect of Age ($\beta=0.33$, $SE=0.04$, $t= 7.86$, $p<.001$), Sex ($\beta=0.35$, $SE=0.09$, $t= 3.98$, $p<.001$), and Education ($\beta=-0.09$, $SE=0.04$, $t= -2.23$, $p=.03$). That is, with every year of increased age the ADAS13 increases by 0.73, there is a 0.77-unit difference between males and females, and every year of education increases ADAS13 scores by 0.20 units. The interaction between Time from Baseline and Diagnosis was not significant ($t=1.31$, $p=.19$). The other definitions of SCD were not associated with cognitive change as measured by the ADAS13.

Longitudinal change in the MoCA was observed for the ECoG definition of SCD ($\beta= -0.27$, $SE=0.09$, $t= 2.87$, $p=.004$). People who were SCD+ had 0.77 units less of MoCA than those who are SCD-. This model also revealed a significant effect of Age ($\beta=-0.28$, $SE=0.05$, $t= -6.03$, $p<.001$), Sex ($\beta=-0.31$, $SE=0.10$, $t= -3.323$, $p=.001$), and Education ($\beta=0.14$, $SE=0.05$, $t= 2.87$, $p=.004$). The interaction between Time from Baseline and Diagnosis was not significant ($t<1$, $p=.87$). Every year of increased age reduces the MoCA score by 0.80 units, there is a difference of 0.88 units between males and females, and every year of education increases MoCA scores by 0.40 units.

The ECog + Worry definition of SCD also revealed a significant group effect ($\beta = -0.22$, $SE = 0.10$, $t = -2.18$, $p = .03$). That is, people who were SCD+ had 0.63 units less of MoCA than those who are SCD-. Similar to the ECog results, this model also revealed a significant effect of Age ($\beta = -0.29$, $SE = 0.05$, $t = -5.94$, $p < .001$), Sex ($\beta = -0.34$, $SE = 0.10$, $t = -3.39$, $p < .001$), and Education ($\beta = 0.14$, $SE = 0.05$, $t = 2.90$, $p = .004$). The interaction between Time from Baseline and Diagnosis was not significant ($t = -1.10$, $p = .27$). Every year of increased age reduces the MoCA score by 0.83 units, there is a difference of 0.97 units between males and females, and every year of education increases MoCA scores by 0.40 units. The CCI and Worry definition of SCD was not significantly associated with MoCA scores.

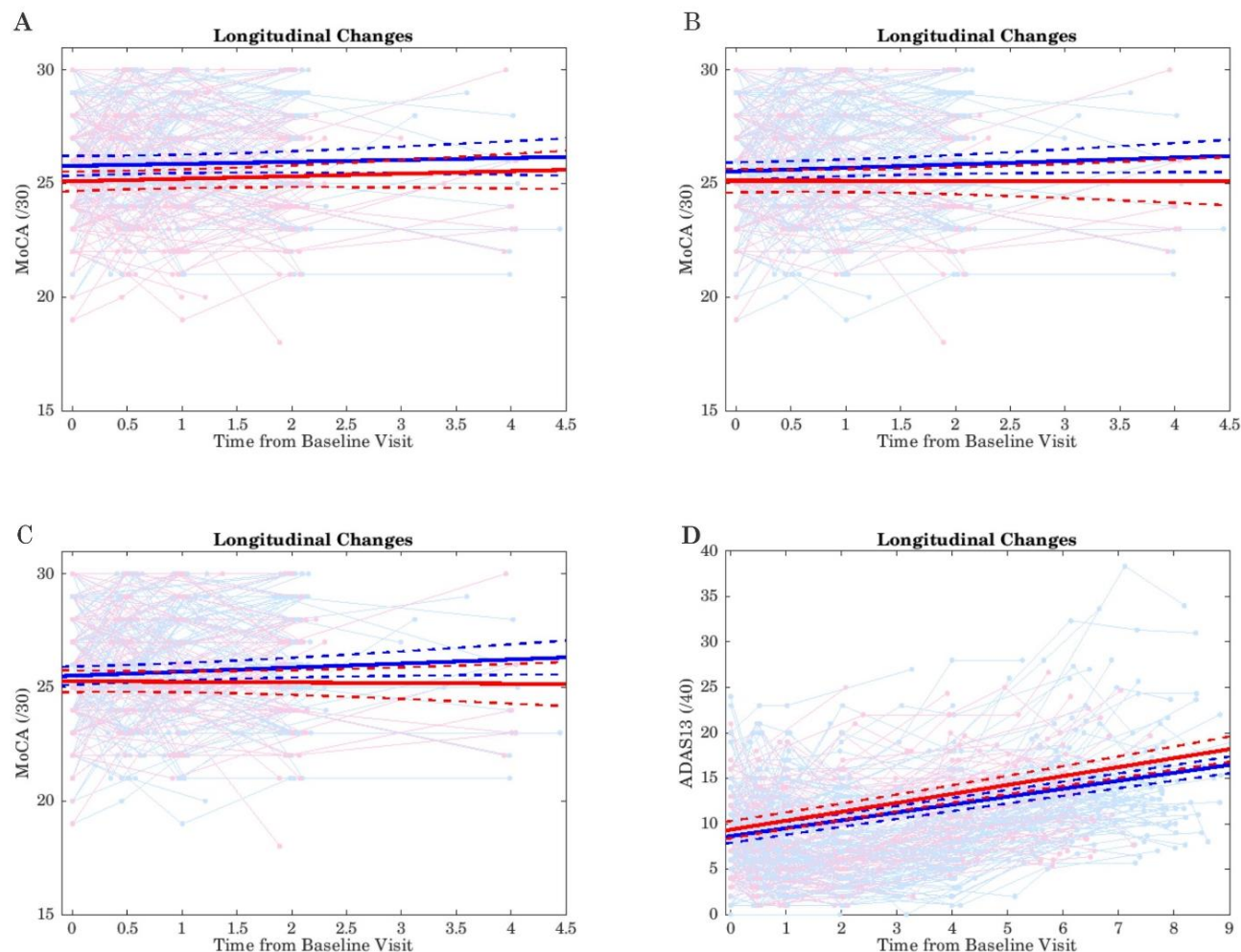


Figure 3. All figures show the longitudinal clinical change of each participant as well as the group change over time. Red lines = SCD+; Blue lines = SCD- A) Longitudinal change of MoCA scores when defining SCD- and SCD+ based on ECog; B) Longitudinal change of MoCA scores when defining SCD- and SCD+ based on ECog + Worry; C) Longitudinal change of Montreal Cognitive Assessment (MoCA) scores when defining SCD- and SCD+ based on Worry; D) Longitudinal change of ADAS scores when defining SCD- and SCD+ based on the Cognitive Change Index

Discussion

The current study investigated three questions: 1) do four commonly used methods to define SCD categorize older adults into similar groups? 2) do SCD-:SCD+ atrophy differences vary depending on the definition of SCD? and 3) are longitudinal cognitive trajectories of SCD- and SCD+ populations different between the four definitions of SCD? We observed that the four methods do

not categorize older adults similarly as there was little overlap between the definitions. Both atrophy differences and longitudinal cognitive trajectories between SCD- and SCD+ vary depending on the method used to define SCD.

First, only 40% of the SCD+ participants were common between the four definitions. This result suggests that there are major inconsistencies in who is identified as having SCD between these methods. Such differences in identifying who has SCD can be a problem if a clinician is attempting to determine which measure to use to predict/screen for AD or future cognitive decline. With little overlap between these methods, clinicians may screen out people who could have preclinical AD or may include people who do not have preclinical AD. Therefore, if early treatment becomes available, they could miss treatment for some patients while providing treatment that is not necessary to others. Relying on subjective clinical judgment may introduce further inconsistencies across care providers and clinics. To better understand which SCD definition best predicts future brain atrophy and cognitive decline more research is needed to standardize how SCD is screened for, measured, and diagnosed.

Second, we observed SCD-:SCD+ volume differences between groups using the four definitions. However, these group effects were in the same locations across the definitions. Hippocampal volume was smaller in SCD+ relative to SCD- when using both the CCI and Worry and approached significance for the ECog + Worry definition. Superior temporal region volume was smaller in SCD+ relative to SCD-, but only when groups were differentiated using ECog.

The SCD Initiative working group has suggested standards for defining SCD in research (6). Nevertheless, current studies have used widely discrepant methodologies for defining SCD, making generalizations difficult. This lack of standardization may explain why there are inconsistencies when determining if people with SCD exhibit AD-related brain pathology. In this

study, we observed decreased hippocampal volumes in those with SCD+ relative to SCD- (using the CCI and Worry methods), these findings are consistent with other studies (11,28–30).

However, we did not find hippocampal volume group differences when defining SCD with the ECog and only approached significance with ECog + Worry. These findings are *also* consistent with several studies that did not report hippocampal atrophy in people with SCD (12,14,31).

The ECog was sensitive to SCD-:SCD+ group differences in the right and left superior temporal regions that were not observed with the other definitions. Previous studies have found that white matter (20) and cortical thickness (32) in the superior temporal regions are sensitive to progression to amnesic MCI and AD. Yue et al. observed that enlarged white matter at the banks of the superior temporal sulcus was associated with increased progression to MCI over 7 years (20). Eskildsen et al. found that cortical thickness of the left superior temporal sulcus was a key feature in discriminating between people with MCI who remain stable and people with MCI who convert to AD over 3 years (32). It is thus possible that the ECog may be sensitive to early subtle future cognitive decline several years in advance.

Third, we found different cognitive trajectories between the SCD+ groups using the different definitions. While an association between the CCI and future cognitive decline as measured by the ADAS-13 was found, an association between the CCI and cognitive change on the MoCA was not. On the other hand, the ECog definition of SCD was associated with a decline on the MoCA, but not on the ADAS-13. For both the ADAS and MoCA models, we found a positive relationship between education with test scores and a negative association between male sex and age with test scores. The worry definition was not associated with future cognitive decline as measured by either the ADAS or MoCA. This finding is further supported by the ECog + Worry model for the MoCA score reaching significance at a lower level while the ECog was quite

significant; suggesting that the ECog definition is driving the association between SCD and cognitive change for MoCA scores.

The observed differences between future cognitive decline and the SCD definitions in this study may be related to individual sensitivity of the cognitive tests and/or the SCD definitions. The ADAS and MoCA have been found to be highly correlated, suggesting that they measure similar cognitive functioning (33). However, the ADAS may be more sensitive at detecting moderate levels of cognitive decline and not as sensitive in the early stages (34) while the MoCA may be sensitive to cognitive decline in the prodromal and mild AD stage (35,36). It is also possible that the CCI, ECog, and Worry definitions have various levels of sensitivity to SCD or are measuring different subtypes of SCD.

The mixed group volume differences and cognitive trajectories between SCD- and SCD+ observed between the four definitions of SCD suggest these methods may measure different *constructs* or types of SCD. This hypothesis is further supported by the participant overlap between the methods reaching only 40%. A recent study identified multiple subgroups of SCD that were characterized by unique patterns of brain atrophy (37). They observed a strong association between memory, language production, and language comprehension complaints with the signature pattern of AD atrophy. It is thus possible that the CCI and Worry methods, which revealed hippocampal volume declines in people with SCD, may tap into subjective cognitive declines involved with the left hippocampus such as verbal memory deficits (38). Reduced volume in the superior temporal region was observed in SCD+ compared to SCD- but only using the ECog definition. Thus, the ECog may be sensitive to cognition declines related to the superior temporal gyrus such as episodic memory coding, language comprehension, and speech processing (39,40).

It should be noted that the image processing employed in this study (i.e., DBM and SNIPE) have been developed and extensively validated for use in multi-center and multi-scanner studies. These processing methods have previously shown patterns of atrophy in cognitively normal, MCI, dementia, and neurodegenerative disease populations, including ADNI (41–44). These techniques thus have the required sensitivity to reveal group differences between SCD- and SCD+. Therefore, the lack of SCD-:SCD+ group differences observed in this study is not the result of image processing methods that are not sensitive to observe group differences.

There are a few limitations of the current study. First, in current study we used cross-sectional data. Future research should use a longitudinal design to determine if the conversion rate to MCI from SCD varies in the assigned groups with all four definitions. A longitudinal study would not only help differentiate between the subtypes of SCD but would also improve our understanding of how the questionnaires may be associated with regional atrophy in SCD+ vs. SCD-. In the current dataset, the CCI was only administered at screening and thus a follow-up with the CCI was not possible. Another limitation of the current study is the use of a population-based cohort. This study design is a limitation because people who seek medical help (i.e., memory clinic consultation) for memory concerns show more hippocampal atrophy than those who do not seek help (45) and may be more likely to convert to MCI (17). Within our sample, all our participants education levels were quite high. High education is a limitation because the changes observed in this sample may not be representative of all populations.

Conclusion

The current findings indicate regional atrophy and future cognitive decline observed in SCD+ populations will depend on the SCD definition used. Although hippocampal and superior temporal volumes differed between SCD- and SCD+, these differences were dependent on the

SCD definition employed. The CCI was associated with future decline on the ADAS-13 while the ECog was associated with future decline on the MoCA. These findings have significant implications for both clinicians and researchers. In both clinical and research settings, it is crucial to use a definition which has high sensitivity and specificity to identify individuals in the preclinical stages of AD. Misidentifying people who will progress to AD reduces the likelihood of researchers finding an early biomarker and reduces the chances of clinicians providing effective treatments to slow or stop AD progression. Future research needs to determine which questionnaire correctly identifies preclinical AD to determine who will progress to AD.

Table 1: Demographic and clinical characteristics for cognitively normal older adults with and without subjective cognitive decline

Demographic information	Analysis 1- CCI		Analysis 2-ECog		Analysis 3- ECog + Worry		Analysis 4- Worry	
	SCD- n=176	SCD+ n=97	SCD- n=130	SCD+ n=143	SCD- n=177	SCD+ n=96	SCD- n=149	SCD+ n=124
Age	73.50 ± 6.27	72.44 ± 5.59	72.56 ± 6.21	73.63 ± 5.86	72.94 ± 6.17	73.43 ± 5.84	72.97 ± 6.17	73.29 ± 5.93
Education	16.55 ± 2.54	16.77 ± 2.59	16.58 ± 2.65	16.67 ± 2.48	16.63 ± 2.57	16.63 ± 2.56	16.64 ± 2.52	16.61 ± 2.62
AV-45	1.11 ± 0.18	1.13 ± 0.19	1.10 ± 0.16	1.13 ± 0.19	1.11 ± 0.18	1.14 ± 0.19	1.10 ± 0.17	1.14 ± 0.19
<i>APOE</i> e4+	51 (29%)	29 (30%)	38 (29%)	42 (29%)	54 (30%)	26 (27%)	44 (30%)	36 (30%)
Amyloid Positivity	61 (35%)	42 (43%)	46 (35%)	57 (40%)	59 (33%)	44 (46%)	49 (33%)	54(44%)
Male sex	86(48%)	61 (41%)	64 (49%)	64 (45%)	88(50%)	38 (40%)	83(51%)	50(40%)
ADAS-13	9.05 ± 4.44	8.79 ± 4.23	8.79 ± 4.23	9.19 ± 4.19	8.93 ± 4.57	8.84 ± 3.77	8.99 ± 4.77	8.78 ± 3.67
MoCA	25.75 ± 2.37	25.65 ± 2.58	26.12 ± 2.35	25.36 ± 2.47*	25.83 ± 2.37	25.50 ± 2.58	25.82 ± 2.36	25.58 ± 2.56
MMSE	29.02 ± 1.23	29.01 ± 1.22	29.12 ± 1.13	28.93 ± 1.30	29.06 ± 1.20	28.95 ± 1.28	29.08 ± 1.17	28.95 ± 1.30

Values are expressed as mean and standard deviation. *APOE* e4+, amyloid positivity, and male sex are represented as total number of sample and percentage of sample. CCI = Cognitive Change Index. ECog = Everyday Cognition Scale. SCD- = Cognitively normal older adults without subjective cognitive decline. SCD+ = cognitively normal older adults with subjective cognitive decline. ADAS-13 = Assessment Scale–Cognitive Subscale. MoCA = Montreal Cognitive Assessment. MMSE = Mini Mental Status Examination.

Table 2: Logistic regression model results showing differences between cognitively healthy older adults with and without subjective cognitive decline

<i>SNIFE</i>	Analysis 1–CCI	Analysis 2–ECog	Analysis3–ECog + Worry	Analysis 4–Worry Only
Grading rHC	$\beta=-0.03, t=-0.19, p=.85, OR=0.97$	$\beta=-\mathbf{0.23}, t=-\mathbf{1.69}, p=.09, OR=\mathbf{1.26}$	$\beta=0.09, t=0.65, p=.51, OR=1.10$	$\beta=0.08, t=0.57, p=.56, OR=1.08$
Grading lHC	$\beta=-\mathbf{0.30}, t=-\mathbf{2.04}, p=.041, OR=\mathbf{0.74}$	$\beta=-0.13, t=-0.94, p=.34, OR=0.87$	$\beta=-\mathbf{0.27}, t=-\mathbf{1.84}, p=.065, OR=\mathbf{0.76}$	$\beta=-\mathbf{0.33}, t=-\mathbf{2.31}, p=.021, OR=\mathbf{0.72}$
Volume rHC	$\beta=0.05, t=0.41, p=.67, OR=1.10$	$\beta=-0.01, t=-0.09, p=.93, OR=1.02$	$\beta=0.06, t=0.46, p=.64, OR=1.06$	$\beta=-0.02, t=-0.19, p=.85, OR=0.98$
Volume lHC	$\beta=0.15, t=1.15, p=.25, OR=1.16$	$\beta=-0.02, t=-0.15, p=.88, OR=0.98$	$\beta=0.07, t=0.54, p=.59, OR=1.07$	$\beta=0.06, t=0.47, p=.64, OR=1.06$
<i>DBM- Volume</i>				
Right amygdala	$\beta=-0.11, t=-0.88, p=.38, OR=0.89$	$\beta=-\mathbf{0.24}, t=-\mathbf{1.85}, p=.064, OR=\mathbf{0.79}$	$\beta=0.02, t=0.16, p=.87, OR=1.02$	$\beta=0.11, t=0.96, p=.34, OR=1.11$
Left amygdala	$\beta=0.02, t=0.12, p=.90, OR=1.02$	$\beta=-0.18, t=-1.42, p=.15, OR=0.83$	$\beta=0.11, t=0.92, p=.36, OR=1.12$	$\beta=0.16, t=1.43, p=.15, OR=1.18$
Right lateral ventricle	$\beta=0.05, t=0.39, p=.70, OR=1.05$	$\beta=0.14, t=1.07, p=.29, OR=1.15$	$\beta=0.11, t=0.95, p=.34, OR=1.12$	$\beta=0.04, t=0.38, p=.70, OR=1.04$
Left lateral ventricle	$\beta=0.02, t=0.17, p=.86, OR=1.02$	$\beta=0.16, t=1.20, p=.23, OR=1.17$	$\beta=0.18, t=1.56, p=.11, OR=1.21$	$\beta=0.09, t=0.86, p=.38, OR=1.10$
Right superior temporal	$\beta=-0.15, t=-1.22, p=.22, OR=0.86$	$\beta=-\mathbf{0.33}, t=-\mathbf{2.64}, p=.008, OR=\mathbf{0.72}$	$\beta=-0.14, t=-1.18, p=.24, OR=0.87$	$\beta=0.03, t=0.26, p=.79, OR=1.03$
Left superior temporal	$\beta=-0.14, t=-1.10, p=.27, OR=0.87$	$\beta=-\mathbf{0.39}, t=-\mathbf{3.00}, p=.003, OR=\mathbf{0.68}$	$\beta=-0.19, t=1.58, p=.11, OR=0.83$	$\beta=0.02, t=0.15, p=.88, OR=1.02$

CCI = Cognitive Change Index. ECog = Everyday Cognition Scale. rHC = right hippocampus. lHC = left hippocampus. Bolded values represent either significant or approaching significant differences between SCD+ and SCD-.

Table 3: Logistic regression model results including APOE and amyloid status showing the differences between cognitively healthy older adults with and without subjective cognitive decline

<i>SNiPE</i>	Analysis 3–CCI	Analysis 2–ECog	Analysis3–ECog + Worry	Analysis 4–Worry Only
Grading rHC	$\beta=-0.007, t=-0.05, p=.96, OR=0.99$ Amyloid: $\beta=0.50, t=1.78, p=.075, OR=1.65$ <i>APOE</i> : $\beta=-0.23, t=-0.76, p=.44, OR=0.80$	$\beta=0.24, t=1.76, p=.078, OR=1.28$ Amyloid: $\beta=0.21, t=0.79, p=.43, OR=1.24$ <i>APOE</i> : $\beta=0.01, t=0.23, p=.98, OR=1.01$	$\beta=0.12, t=0.81, p=.42, OR=1.13$ Amyloid: $\beta=0.64, t=2.28, p=.022, OR=1.90$ <i>APOE</i> : $\beta=-0.35, t=-1.14, p=.26, OR=0.70$	$\beta=0.10, t=0.72, p=.47, OR=1.10$ Amyloid: $\beta=0.50, t=1.87, p=.061, OR=1.66$ <i>APOE</i> : $\beta=-0.16, t=-0.54, p=.59, OR=0.86$
Grading lHC	$\beta=-0.30, t=-1.98, p=.047, OR=0.74$ Amyloid: $\beta=0.48, t=1.72, p=.085, OR=1.62$ <i>APOE</i> : $\beta=-0.23, t=-0.75, p=.45, OR=0.80$	$\beta=-0.13, t=-0.92, p=.36, OR=0.88$ Amyloid: $\beta=0.17, t=0.63, p=.53, OR=1.18$ <i>APOE</i> : $\beta=-0.01, t=-0.05, p=.96, OR=0.99$	$\beta=-0.27, t=1.78, p=.075, OR=0.77$ Amyloid: $\beta=0.61, t=2.16, p=.030, OR=1.83$ <i>APOE</i> : $\beta=-0.35, t=-1.15, p=.25, OR=0.70$	$\beta=-0.33, t=-2.26, p=.024, OR=0.72$ Amyloid: $\beta=0.48, t=1.76, p=.078, OR=1.61$ <i>APOE</i> : $\beta=-0.17, t=-0.57, p=.57, OR=0.85$
Volume rHC	$\beta=0.04, t=0.33, p=.74, OR=1.04$ Amyloid: $\beta=0.50, t=1.78, p=.075, OR=1.64$ <i>APOE</i> : $\beta=-0.22, t=-0.73, p=.46, OR=0.80$	$\beta=-0.01, t=-.10, p=.91, OR=0.99$ Amyloid: $\beta=0.18, t=0.66, p=.50, OR=1.19$ <i>APOE</i> : $\beta=-0.01, t=-0.05, p=.96, OR=0.99$	$\beta=0.05, t=0.36, p=.72, OR=1.05$ Amyloid: $\beta=0.62, t=2.21, p=.027, OR=1.85$ <i>APOE</i> : $\beta=-0.35, t=-1.13, p=.26, OR=0.71$	$\beta=-0.03, t=-0.26, p=.79, OR=0.97$ Amyloid: $\beta=0.49, t=1.83, p=.067, OR=1.63$ <i>APOE</i> : $\beta=-0.17, t=-0.58, p=.56, OR=0.85$
Volume lHC	$\beta=0.14, t=1.12, p=.26, OR=1.16$ Amyloid: $\beta=0.49, t=1.77, p=.076, OR=1.64$ <i>APOE</i> : $\beta=-0.22, t=-0.74, p=.46, OR=0.80$	$\beta=-0.02, t=-.16, p=.87, OR=0.98$ Amyloid: $\beta=0.18, t=0.66, p=.51, OR=1.19$ <i>APOE</i> : $\beta=-0.13, t=-0.04, p=.96, OR=0.99$	$\beta=0.06, t=0.49, p=.62, OR=1.07$ Amyloid: $\beta=0.62, t=2.21, p=.027, OR=1.86$ <i>APOE</i> : $\beta=-0.35, t=-1.14, p=.25, OR=0.70$	$\beta=0.06, t=0.44, p=.66, OR=1.06$ Amyloid: $\beta=0.49, t=1.82, p=.069, OR=1.63$ <i>APOE</i> : $\beta=-0.16, t=-0.55, p=.58, OR=0.85$
<i>DBM</i>	Analysis 3–CCI	Analysis 2–ECog	Analysis3–ECog + Worry	Analysis 4–Worry Only
Right amygdala	$\beta=-0.11, t=-0.82, p=.41, OR=0.90$ Amyloid: $\beta=0.41, t=1.48, p=.13, OR=1.51$ <i>APOE</i> : $\beta=-0.10, t=-0.35, p=.73, OR=0.90$	$\beta=-0.23, t=-1.83, p=.067, OR=0.79$ Amyloid: $\beta=0.13, t=0.47, p=.64, OR=1.13$ <i>APOE</i> : $\beta=-0.02, t=-0.08, p=.94, OR=0.98$	$\beta=0.02, t=0.18, p=.86, OR=1.02$ Amyloid: $\beta=0.13, t=0.52, p=.60, OR=1.14$ <i>APOE</i>: $\beta=-0.47, t=-1.72, p=.085, OR=0.62$	$\beta=0.10, t=0.94, p=.35, OR=1.11$ Amyloid: $\beta=-0.01, t=-0.06, p=.95, OR=0.99$ <i>APOE</i> : $\beta=-0.31, t=-1.23, p=.21, OR=0.74$

Left amygdala	$\beta=0.03, t=0.23, p=.82, OR=1.03$ Amyloid: $\beta=0.42, t=1.52, p=.13, OR=1.52$ APOE: $\beta=-0.10, t=-0.33, p=.74, OR=0.91$	$\beta=-0.17, t=-1.39, p=.16, OR=0.84$ Amyloid: $\beta=0.12, t=0.45, p=.66, OR=1.13$ APOE: $\beta=-0.02, t=-0.06, p=.96, OR=0.98$	$\beta=0.12, t=0.97, p=.33, OR=1.13$ Amyloid: $\beta=0.15, t=0.58, p=.56, OR=1.16$ APOE: $\beta=-0.48, t=-1.75, p=.081, OR=0.62$	$\beta=0.16, t=1.43, p=.15, OR=1.18$ Amyloid: $\beta=-0.01, t=-0.02, p=.98, OR=1.00$ APOE: $\beta=-0.31, t=-1.26, p=.21, OR=0.73$
Right lateral ventricle	$\beta=0.04, t=0.30, p=.76, OR=1.04$ Amyloid: $\beta=0.41, t=1.48, p=.14, OR=1.51$ APOE: $\beta=-0.09, t=-0.30, p=.77, OR=0.91$	$\beta=0.13, t=1.05, p=.29, OR=1.15$ Amyloid: $\beta=0.12, t=0.46, p=.64, OR=1.13$ APOE: $\beta=-0.02, t=-0.07, p=.95, OR=1.02$	$\beta=0.10, t=0.80, p=.43, OR=1.10$ Amyloid: $\beta=0.12, t=0.49, p=.62, OR=1.13$ APOE: $\beta=-0.45, t=-1.65, p=.10, OR=0.63$	$\beta=0.03, t=0.27, p=.79, OR=1.03$ Amyloid: $\beta=-0.03, t=-0.12, p=.90, OR=0.97$ APOE: $\beta=-0.30, t=-1.19, p=.23, OR=0.74$
Left lateral ventricle	$\beta=0.01, t=0.10, p=.91, OR=1.01$ Amyloid: $\beta=0.42, t=1.50, p=.13, OR=1.51$ APOE: $\beta=-0.10, t=-0.32, p=.75, OR=0.91$	$\beta=0.16, t=1.20, p=.23, OR=1.17$ Amyloid: $\beta=0.13, t=0.47, p=.64, OR=1.13$ APOE: $\beta=0.03, t=0.09, p=.93, OR=1.03$	$\beta=0.17, t=1.39, p=.16, OR=1.18$ Amyloid: $\beta=0.12, t=0.48, p=.63, OR=1.13$ APOE: $\beta=-0.44, t=-1.58, p=.12, OR=0.65$	$\beta=0.08, t=0.74, p=.46, OR=1.09$ Amyloid: $\beta=-0.03, t=-0.13, p=.89, OR=0.97$ APOE: $\beta=-0.28, t=-1.15, p=.25, OR=0.75$
Right superior temporal	$\beta=-0.15, t=-1.21, p=.23, OR=0.86$ Amyloid: $\beta=0.41, t=1.50, p=.13, OR=1.51$ APOE: $\beta=-0.09, t=-0.30, p=.77, OR=0.92$	$\beta=-0.33, t=-2.64, p=.008, OR=0.72$ Amyloid: $\beta=0.14, t=0.53, p=.60, OR=1.15$ APOE: $\beta=0.01, t=0.04, p=.97, OR=1.01$	$\beta=-0.13, t=-1.19, p=.23, OR=0.87$ Amyloid: $\beta=0.11, t=0.44, p=.65, OR=1.21$ APOE: $\beta=-0.47, t=-1.72, p=.085, OR=0.62$	$\beta=0.02, t=0.23, p=.82, OR=1.03$ Amyloid: $\beta=-0.03, t=-0.11, p=.91, OR=0.97$ APOE: $\beta=-0.30, t=-1.21, p=.22, OR=0.74$
Left superior temporal	$\beta=-0.14, t=-1.04, p=.30, OR=0.87$ Amyloid: $\beta=0.39, t=1.44, p=.15, OR=1.49$ APOE: $\beta=-0.06, t=-0.19, p=.85, OR=0.94$	$\beta=-0.39, t=-3.00, p=.002, OR=0.68$ Amyloid: $\beta=0.10, t=0.36, p=.72, OR=1.10$ APOE: $\beta=0.11, t=0.37, p=.71, OR=1.11$	$\beta=-0.18, t=-1.51, p=.13, OR=0.83$ Amyloid: $\beta=0.11, t=0.44, p=.65, OR=1.12$ APOE: $\beta=-0.45, t=-1.66, p=.097, OR=0.63$	$\beta=0.02, t=0.19, p=.85, OR=1.02$ Amyloid: $\beta=-0.03, t=-0.11, p=.91, OR=0.97$ APOE: $\beta=-0.30, t=-1.22, p=.22, OR=0.74$

CCI = Cognitive Change Index. ECog = Everyday Cognition Scale. rHC = right hippocampus. lHC = left hippocampus. Bolded values represent either significant or approaching significant differences between SCD+ and SCD-.

Table 4: Linear regression model results showing the group differences in AV-45 between SCD- and SCD+.

	Analysis 1–CCI	Analysis 2–ECog	Analysis3–ECog + Worry	Analysis 4–Worry Only
Intercept	$\beta=0.71, SE= 0.13, t=5.41, p<.001$	$\beta=0.71, SE= 0.13, t=5.56, p<.001$	$\beta=0.71, SE= 0.13, t=5.43, p<.001$	$\beta=0.71, SE= 0.13, t=5.41, p<.001$
Group	$\beta=0.13, SE= 0.02, t=0.62, p=.54$	$\beta=0.02, SE= 0.02, t=1.13, p=.26$	$\beta=0.02, SE= 0.02, t=0.92, p=.35$	$\beta=0.03, SE= 0.02, t=1.39, p=.17$
Sex- Male	$\beta=-0.09, SE= 0.02, t=-4.14, p<.001$	$\beta=-0.09, SE= 0.02, t=-4.14, p<.001$	$\beta=-0.09, SE= 0.02, t=-4.15, p<.001$	$\beta=-0.09, SE= 0.02, t=-4.08, p<.001$
Age	$\beta=0.01, SE< 0.01, t=3.40, p<.001$	$\beta=0.01, SE< 0.01, t=3.26, p<.001$	$\beta=0.01, SE< 0.01, t=3.40, p<.001$	$\beta=.01, SE< 0.01, t=3.38, p<.001$

CCI = Cognitive Change Index. ECog = Everyday Cognition Scale. Bolded values represent significant differences between SCD+ and SCD-.

1. International Alzheimer's Disease (2020): Dementia Statistics. Retrieved from <https://www.alzint.org/about/dementia-facts-figures/dementia-statistics/>
2. Association A (2021): What is Alzheimer's disease. Retrieved from <https://www.alz.org/alzheimers-dementia/what-is-alzheimers>
3. Serrano-Pozo A., Frosch MP, Masliah E, Hyman, BT (2011). Neuropathological alterations in Alzheimer disease. *Cold Spring Harbor perspectives in medicine*, *1*(1), a006189.
4. Craig-Schapiro R, Fagan AM, Holtzman DM (2009): Neurobiology of Disease Biomarkers of Alzheimer's disease. *PloS one* *35*:128–140.
5. Sperling RA, Aisen PS, Beckett LA, Bennett DA, Craft S, Fagan AM, *et al.* (2011): Toward defining the preclinical stages of Alzheimer's disease: Recommendations from the National Institute on Aging-Alzheimer's Association workgroups on diagnostic guidelines for Alzheimer's disease. *Alzheimer's Dement* *7*:280–292.
6. Jessen F, Amariglio R, Van Boxtel MPJ, Breteler MM, Ceccaldi M, Chételat G, *et al.* (2014): A conceptual framework for research on subjective cognitive decline in preclinical Alzheimer's disease. *Alzheimer's Dement* *10*:844–852.
7. Reisberg B, Shulman MB, Torossian C, Leng L, Zhu W (2010): Outcome over seven years of healthy adults with and without subjective cognitive impairment. *Alzheimer's Dement* *6*:11–24.
8. Rabin LA, Smart CM, Amariglio RE (2017): Subjective Cognitive Decline in Preclinical Alzheimer's Disease. *Annu Rev Clin Psychol* *13*: 369–396.
9. Wang X, Huang W, Su L, Xing Y, Jessen F, Sun Y, Shu N, *et al.* (2020): Neuroimaging advances regarding subjective cognitive decline in preclinical Alzheimer's disease. *Mol. Neurodegener* *3*: 1–27.
10. Jessen F, Feyen L, Freymann K, Tepest R, Maier W, Heun R, *et al.* (2006): Volume reduction of the entorhinal cortex in subjective memory impairment. *Neurobiol Aging* *27*: 1751–1756.
11. Striepens N, Scheef L, Wind A, Popp J, Spottke A, Cooper-Mahkorn D, *et al.* (2010): Volume loss of the medial temporal lobe structures in subjective memory impairment. *Dement Geriatr Cogn Disord* *29*: 75–81.
12. Striepens N, Scheef L, Wind A, Meiberth D, Popp J, Spottke A, *et al.* (2011): Interaction effects of subjective memory impairment and ApoE4 genotype on episodic memory and hippocampal volume. *Psychol Med* *41*: 1997–2006.
13. Amariglio RE, Donohue MC, Marshall GA, Rentz DM, Salmon DP, Ferris SH, *et al.* (2015): Tracking early decline in cognitive function in older individuals at risk for Alzheimer disease dementia: The Alzheimer's disease cooperative study cognitive function instrument the

Alzheimer's disease cooperative study cognitive function instrument. *JAMA Neurol* 72: 446–454.

14. Saykin AJ, Wishart HA, Rabin LA, Santulli RB, Flashman LA, West JD, *et al.* (2006): Older adults with cognitive complaints show brain atrophy similar to that of amnesic MCI. *Neurology* 67:834–842.

15. Farias ST, Mungas D, Reed BR, Cahn-Weiner D, Jagust W, Baynes K, DeCarli C (2008): The Measurement of Everyday Cognition (ECog): Scale Development and Psychometric Properties. *Neuropsychology* 22:531–544.

16. Crook TH, Feher EP, Larrabee GJ (1992): Assessment of Memory Complaint in Age-Associated Memory Impairment: The MAC-Q. *Int Psychogeriatrics* 4:165–176.

17. van Harten AC, Mielke MM, Swenson-Dravis DM, Hagen CE, Edwards KK, Roberts RO, Geda YE, *et al.* (2018): Subjective cognitive decline and risk of MCI The Mayo Clinic Study of Aging. *Neurology* 4:e300-e321

18. Vogel A, Salem LC, Andersen BB, Waldemar G (2016): Differences in quantitative methods for measuring subjective cognitive decline - Results from a prospective memory clinic study. *Int Psychogeriatrics* 28:1513–1520.

19. Coupe P, Yger P, Prima S, Hellier P, Kervrann C, Barillot C (2008): An optimized blockwise nonlocal means denoising filter for 3-D magnetic resonance images. *IEEE Trans Med Imaging* 27:425–441.

20. Yue L, Hu D, Zhang H, Wen J, Wu Y, Li W, *et al.* (2020): Prediction of 7-year's conversion from subjective cognitive decline to mild cognitive impairment. *Hum Brain Mapp* 42:192–203.

21. Chou Y, Leporé N, Avedissian C, Madsen SK, Parikshak N, Hua X, *et al.* (2009): NeuroImage Mapping correlations between ventricular expansion and CSF amyloid and tau biomarkers in 240 subjects with Alzheimer's disease, mild cognitive impairment and elderly controls. *Neuroimage* 46: 394–410.

22. Coupe P, Yger P, Prima S, Hellier P, Kervrann C, Barillot C (2008): An optimized blockwise nonlocal means denoising filter for 3-D magnetic resonance images. *IEEE Trans Med Imaging* 27: 425–441.

23. Sled JG, Zijdenbos AP, Evans AC (1998): A nonparametric method for automatic correction of intensity nonuniformity in mri data. *IEEE Trans Med Imaging* 17:87–97.

24. Dadar M, Fonov VS, Collins DL (2018): A comparison of publicly available linear MRI stereotaxic registration techniques. *Neuroimage* 174:191–200.

25. Avants BB, Epstein CL, Grossman M, Gee JC (2008): Symmetric diffeomorphic image registration with cross-correlation: Evaluating automated labeling of elderly and neurodegenerative brain. *Med Image Anal* 12:26–41.
26. Manera AL, Dadar M, Fonov V, Collins DL (2020): CerebrA, registration and manual label correction of Mindboggle-101 atlas for MNI-ICBM152 template. *Sci Data* 7:1–9.
27. Coupé P, Eskildsen SF, Manjón J V., Fonov VS, Pruessner JC, Allard M, Collins DL (2012): Scoring by Nonlocal Image Patch Estimator for early detection of Alzheimer’s disease. *NeuroImage Clin* 1:141–152.
28. Cantero JL, Iglesias JE, Van Leemput K, Atienza M (2016): Regional hippocampal atrophy and higher levels of plasma amyloid-beta are associated with subjective memory complaints in nondemented elderly subjects. *Journals Gerontol - Ser A Biol Sci Med Sci* 71:1210–1215.
29. Perrotin A, De Flores R, Lamberton F, Poisnel G, La Joie R, De La Sayette V, *et al.* (2015): Hippocampal Subfield Volumetry and 3D Surface Mapping in Subjective Cognitive Decline. *J Alzheimer’s Dis* 48:S141–S150.
30. Kim M-J, Seo SW, Kim GH, Kim ST, Lee J-M, Qiu A, Na DL (2013): Less depressive symptoms are associated with smaller hippocampus in subjective memory impairment. *Arch Gerontol Geriatr* 57:110–115.
31. Shen L, Saykin AJ, Kim S, Firpi HA, West JD, Risacher SL, *et al.* (2010): Comparison of Manual and Automated Determination of Hippocampal Volumes in MCI and Early AD. *Brain Imaging Behav* 4:86–95.
32. Eskildsen SF, Coupé P, Fonov VS, Pruessner JC, Collins DL (2015): Structural imaging biomarkers of Alzheimer’s disease: Predicting disease progression. *Neurobiol Aging* 36: S23–S31.
33. Solomon TM, DeBros GB, Budson AE, Mirkovic N, Murphy CA, Solomon PR (2014): Correlational analysis of 5 commonly used measures of cognitive functioning and mental status: An update. *Am J Alzheimers Dis Other Demen* 29:718–722.
34. Bengtson JF, Balsis S, Geraci L, Massman PJ, Doody RS (2009): How well do the ADAS-cog and its subscales measure cognitive dysfunction in Alzheimer’s disease? *Dement Geriatr Cogn Disord* 28:63–69.
35. Larner AJ (2012): Screening utility of the Montreal Cognitive Assessment (MoCA): in place of – or as well as – the MMSE? *Int. Psychogeriatr* 24:391–396.
36. Costa AS, Reich A, Fimm B, Ketteler ST, Schulz JB, Reetz K (2014): Evidence of the sensitivity of the MoCA alternate forms in monitoring cognitive change in early Alzheimer’s disease. *Dement Geriatr Cogn Disord* 37:95–103.

37. Diaz-Galvan P, Ferreira D, Barroso J, Westman E (2021): Comparing different approaches for operationalizing subjective cognitive decline: Impact on syndromic and biomarker profiles. *Sci. Rep* 16: 1–15.
38. Ezzati A, Katz MJ, Zammit AR, Lipton ML, Zimmerman ME, Sliwinski MJ, Lipton RB (2017): With Verbal Episodic and Spatial Memory in Older Adults. *Neuropsychologia* 93:380–385.
39. Wang P, Li J, Li HJ, Huo L, Li R (2016): Mild cognitive impairment is not “mild” at all in altered activation of episodic memory brain networks: Evidence from a meta-analysis. *Front Aging Neurosci* 8:1–16.
40. Yi HG, Leonard MK, Chang EF (2019): The Encoding of Speech Sounds in the Superior Temporal Gyrus. *Neuron* 102:1096–1110.
41. Dadar M, Camicioli R, Duchesne S, Collins DL (2020): The temporal relationships between white matter hyperintensities, neurodegeneration, amyloid beta, and cognition. *Alzheimer's & Dementia: Diagnosis, Assessment & Disease Monitoring* 12: e12091.
42. Zandifar A, Fonov VS, Ducharme S, Belleville S, Collins DL (2020): NeuroImage: Clinical MRI and cognitive scores complement each other to accurately predict Alzheimer’s dementia 2 to 7 years before clinical onset. *NeuroImage Clin* 25:102121.
43. Dadar M, Gee M, Shuaib A, Duchesne S, Camicioli R (2020): Cognitive and motor correlates of grey and white matter pathology in Parkinson’s disease. *NeuroImage Clin* 27:102353.
44. Manera AL, Dadar M, Collins DL, Ducharme S, Lobar F (2019): NeuroImage: Clinical Deformation based morphometry study of longitudinal MRI changes in behavioral variant frontotemporal dementia. *NeuroImage Clin* 24:102079.
45. Perrotin A, La Joie R, de La Sayette V, Barré L, Mézenge F, Mutlu J, *et al.* (2017): Subjective cognitive decline in cognitively normal elders from the community or from a memory clinic: Differential affective and imaging correlates. *Alzheimer’s Dement* 13:550–560.