

Infants have lower RT-PCR cycle threshold for SARS-CoV-2 in comparison with older children and adults

Márcia Polese-Bonatto^{1*}, Ivaine Tais Sauthier Sartor^{1*}, Fernanda Hammes Varela^{1,2}, Gabriela Luchiari Tumieto Gianinni³, Thaís Raupp Azevedo¹, Ingrid Rodrigues Fernandes¹, Gabriela Oliveira Zavaglia¹, Luciane Beatriz Kern¹, Amanda Paz Santos¹, Caroline Nespolo de David¹, Walquiria Aparecida Ferreira de Almeida⁴, Victor Bertollo Gomes Porto⁴; Marcelo Comerlato Scotta^{1,2}, Renato T. Stein^{1,2}, COVIDa study group¹

*These authors contributed equally to this manuscript.

1. Social responsibility – PROADI-SUS, Hospital Moinhos de Vento, Porto Alegre, Brazil
2. School of Medicine, Pontifícia Universidade Católica do Rio Grande do Sul, Porto Alegre, Brazil
3. Laboratory of Genetics and Molecular Biology - Hospital Moinhos de Vento, Porto Alegre, Brazil
4. General Coordination, Programa Nacional de Imunização, Brazilian Ministry of Health

Corresponding author: Marcelo Comerlato Scotta, e-mail: marcelo.scotta@hmv.org.br, phone: 55-51-981118678, address: Ramiro Barcelos street, 630/1002, ZIP-Code: 90035-001, Porto Alegre, Brazil.

Abstract

Background: The viral dynamics and the role of children in the spread of SARS-CoV-2 are not completely understood. Our aim was to evaluate how RT-PCR Ct values among children with confirmed SARS-CoV-2 compared with that of adult subjects.

Methods: Patients (aged from 2 months to ≤ 18 years, and adults) with signs and symptoms of acute SARS-CoV-2 infection for less than 7 days, were prospectively enrolled in the study from May to November 2020. All participants performed RT-PCR assay for SARS-CoV-2 detection; Ct values of ORF1ab, N, and S gene-targets, and the average of all the three probes were used as surrogates of viral load.

Results: Of the total of 376 participants with confirmed SARS-CoV-2 infection there were 21 infants, 62 children and 293 adults. The RT-PCR Ct values of children under 18 were not significantly different from that of adults, as observed by the analyzed probes (namely ORF1ab, N, and S), and by the mean of all 3 gene-targets. However, infants had significantly lower Ct values compared to children and adults ($P = 0.044$).

Discussion: Ct values for children were not significantly different than that of adults with positive SARS-CoV-2. Interestingly, infants had even lower Ct values when compared to older children and adults. Although viral load is not the only determinant of transmission, infants may play a significant role in the spread of SARS-CoV-2 in the community, especially if or when this population returns to regular daycare activities.

Key words: SARS-CoV-2, COVID-19, children, cycle threshold, viral load.

Introduction

In December 2019, an outbreak of a new viral pneumonia was identified in Wuhan, China¹. Phylogenetic analysis of the new virus, classified initially as 2019 nCoV, pointed it as a member of the *Betacoronavirus* genus. This virus presented typical features of the coronavirus family previously identified in humans, bats and other wild animals. By February 2020, the Coronavirus Study Group (CSG) of the International Committee on Virus Taxonomy suggested a nomenclature change to severe acute respiratory syndrome coronavirus 2 (SARS-CoV-2) due to phylogenetic analysis relating this new virus to coronaviruses².

Since then, all countries have been dealing with this pandemic with an unprecedented number of severe and also non-severe patients. Still, children have somehow been spared from these severe outcomes. An important issue that still needs clarification relates to understanding the impact of viral load for different levels of disease, since these could be associated not only with disease severity, but also to its impact on infectivity and viral transmission in the community. The difference on the amount of viral loads between infected children and adults is at this stage of knowledge yet a matter of some debate^{3,4}.

The viral load of SARS-CoV-2 can be indirectly measured using the cycle threshold (Ct) value of automated RT-PCR techniques, and its value is inversely proportional to the viral load. Ct value is defined as the number of cycles necessary to amplify viral RNA to reach a detectable level, which is a positive fluorescent amplification signal in a real-time reverse transcription-polymerase chain reaction (RT-PCR) assay^{5,6}. Pujadas et. al.⁷ suggested the use of viral load to identify severe patients, and to develop predictive algorithms.

The role of children as spreaders of SARS-CoV-2 is not completely understood, even though it is clear that they (as a group) have been spared of severe presentations of the

disease^{3,8}. However, such differences among different age groups remain unclear⁹. In this study we report the viral RNA Ct values patterns observed during the early phase of infection in a cohort of patients with confirmed SARS-CoV-2 infection and have these Ct values compared between infants (2 mo. to <2 years), children between 2 years to <18 years and adults (≥ 18 years).

Materials and Methods

This was a prospective cross-sectional multicenter study with data collected in two hospitals in Brazil. From May to November 2020, we assessed outpatient subjects seen at these emergency rooms (ERs), or those hospitalized, presenting with at least one sign or symptom suggestive of COVID-19 (cough, fever, or sore throat) within 7 days of symptoms onset (SO). Eligible patients with confirmed SARS-CoV-2 infection were included in the study. Main exclusion criteria was failure to collect an appropriate sample for diagnosis. Age groups compared were classified as infants (2 mo. to <2 years), children (aged from ≥ 2 to <18 years) and adults (≥ 18 years).

All participants performed RT-PCR assay for SARS-CoV-2 detection. Procedure for sample collection involved one bilateral nasopharyngeal and one oropharyngeal swab collection. Both swabs were placed in the same transport medium with saline solution and RNeasy[®], RNA Stabilization Solution (Catalog number AM7021). RNA was extracted using MagMax[™] Viral/Pathogenic Nucleic Acid Isolation (Applied Biosystems) in the KingFisher Duo Prime System platform (ThermoFisher, USA). The RT-PCR assay was performed using Path[™] 1-Step RT-qPCR Master Mix, CG (catalog number A15299, AppliedBiosystems) and TaqMan[™] 2019-nCoV Assay Kit v1 (catalog number A47532, which comprised *ORF1ab*, *S* and *N* SARS-CoV-2-specific targets) in 10 μ L total reaction, of which 5 μ L were RNA. For reaction control we used 5 μ L (200 copies/ μ L) of TaqMan[™] 2019-nCoV Control Kit v1 (catalog number A47533). Due to assistencial

and laboratory decisions, since 7th October, the RT-PCR assays were performed using only for *N* and *ORF1ab* SARS-CoV-2–specific targets.

We excluded participants with clinical conditions that compromised the immune system and could potentially interfere with viral load, such as type 1 or 2 diabetes mellitus, previous organ transplant, cancer diagnosis or subjects who had chemotherapy in the two weeks previous to enrollment.

We included in these analyses only participants within the first 7 days of SO, since the peak of infectivity largely occurs in the first week of illness^{10(p19)}. All the three probes cycle threshold (Ct) values of *ORF1ab*, *N*, *S* gene-targets and the median of these were compared as surrogates of viral load. Percentages were used to describe categorical variables; continuous variables were summarized in terms of median and interquartile range (IQR). Data normality assumptions were verified for continuous variables. Two-tailed Mann-Whitney-Wilcoxon test or two-tailed Kruskal-Wallis test followed by Benjamini-Hochberg correction for multiple comparisons, used to compare Ct values of *ORF1ab*, *S* and *N* SARS-CoV-2–specific targets between groups. Linear regression analysis was performed to predict the Ct values from RT-PCR assays, and odds ratio with 95% confidence intervals were calculated. All data preprocessing and analyses were performed in R 3.5.0 statistical software¹¹.

The study was performed in accordance with the declaration of Helsinki and Good Clinical Practice Guidelines, after approval by the Hospital Moinhos de Vento Institutional Review Board (IRB number 30749720.4.1001.5330) submitted April 14th, 2020 and a decision made April 17th, 2020 (decision number 3.977.144). All participants included in this study provided either a written informed consent, or a legal responsible provided written informed consent.

Results

In the study 1,823 subjects were originally screened and 334 were excluded for different reasons, Figure 1. All subjects who tested negative for SARS-CoV-2 (N=1,113) were removed from the current analysis, as shown in Figure 1. In the end there were 376 participants with confirmed SARS-CoV-2 infection, with 21 (5.6%) infants, 62 (16.5%) children and 293 (77.9%) adults.

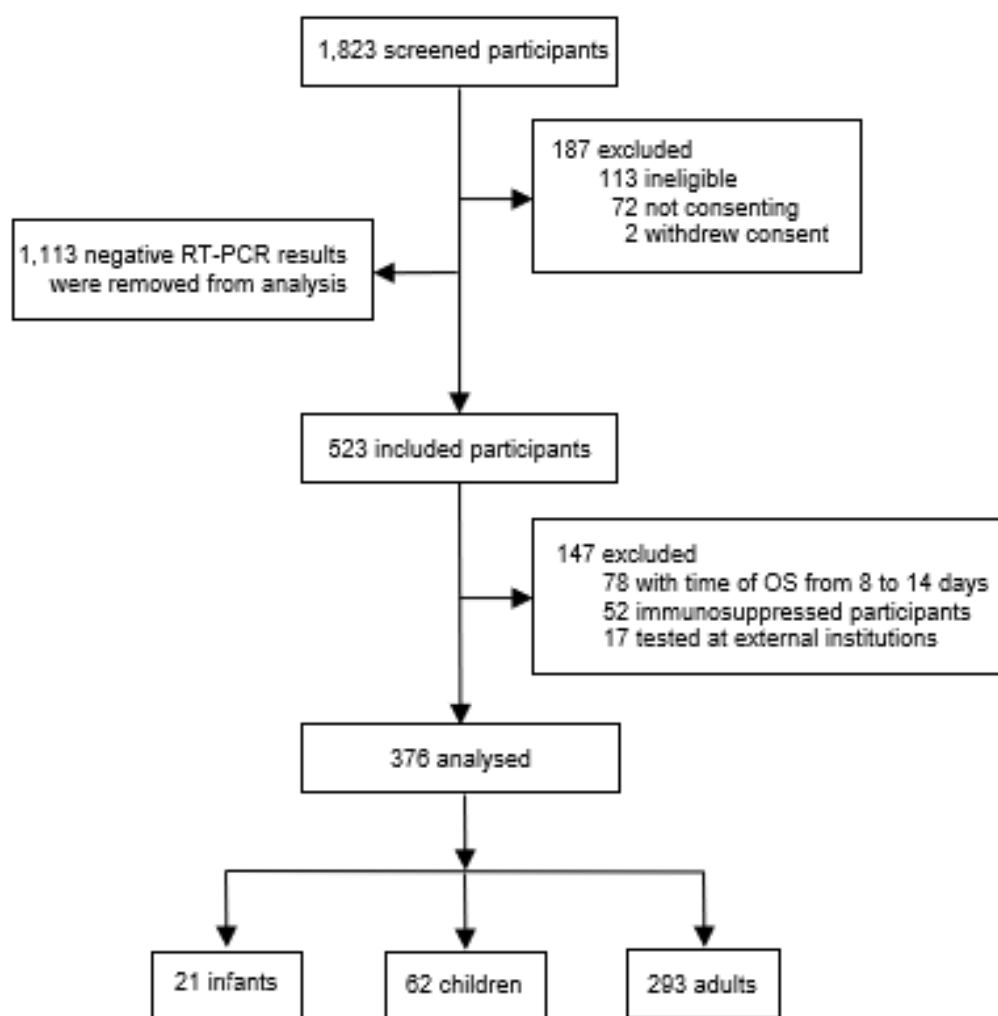


Figure 1. Study subjects' flowchart. (SO) Symptom onset.

In the initial analysis participants were split in two groups, of <18 years and ≥ 18 years of age, to compare overall children and adult mean Ct values. Mean Ct values for children (<18 years) and adults were 20.73 and 20.83 ($P = 0.453$), respectively, for all gene targets (Figure 2). When children were further stratified in two age groups, mean Ct values were 18.11 for infants, 21.19 for children, and 20.84 for adults ($P = 0.128$) for all gene targets, as shown in Figure 3. To increase study power, older children and adults were then combined as a group, and compared to infants. Median Ct values for *ORF1ab*, *S*, and for the median of all the three gene-targets were significantly lower in infants group ($P = 0.037$, $P = 0.006$, $P = 0.044$, respectively) (Figure 4).

There were 10.6% of the adults (31/293) who required hospitalization, while almost all infants and children had only mild clinical symptoms with only one child needing admission, yet not progressing for a severe outcome.

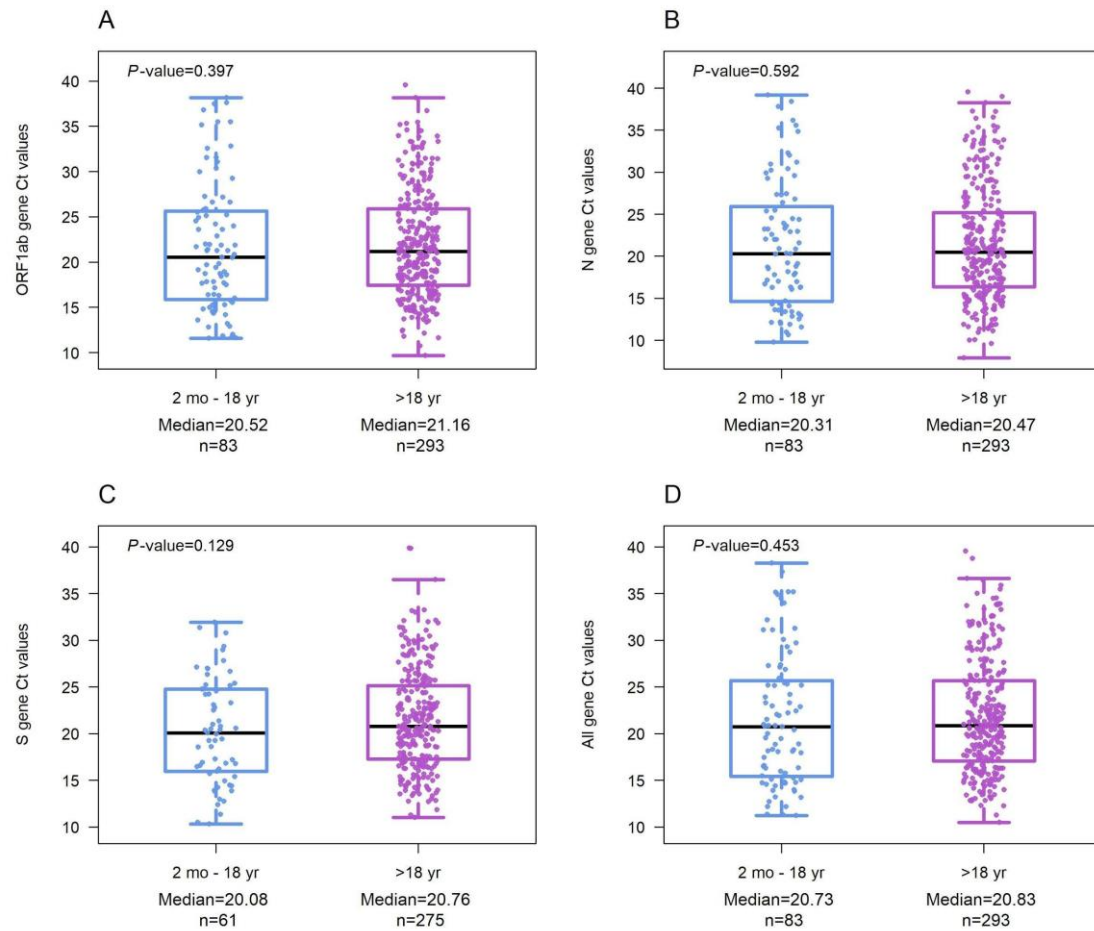


Figure 2. Comparison of Ct values in those of 2 months to 18 years versus adults with confirmed SARS-CoV-2 infection. (A) Ct values of *ORF1ab* gene. (B) Ct values of *N* gene. (C) Ct values of *S* gene. (D) Ct values of the mean of *ORF1ab*, *N* and *S* genes. Median is represented as a solid black line, interquartile ranges are represented by boxes, upper and lower adjacent values are represented by whiskers, and outliers are represented by isolated points. (mo) months. (yr) years.

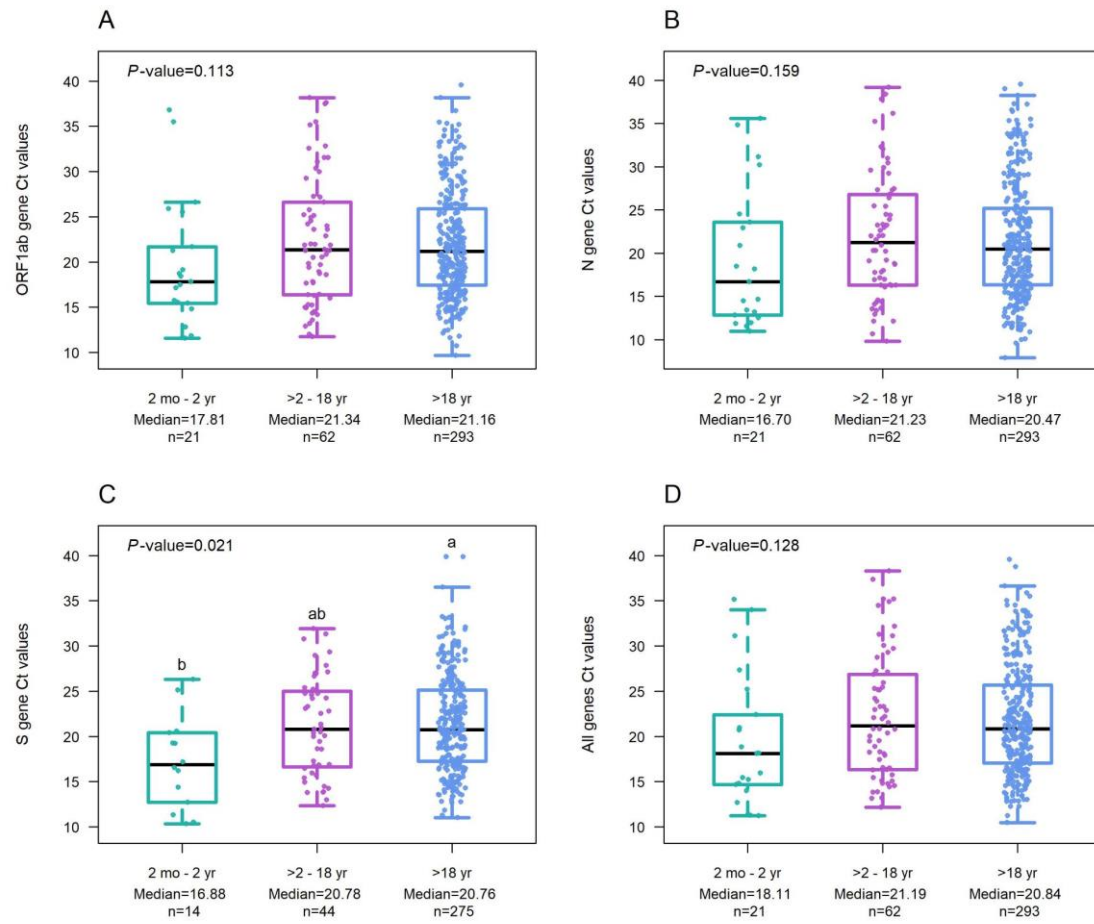


Figure 3. Comparison of Ct values according to age stratification among participants with confirmed SARS-CoV-2 infection. (A) Ct values of *ORF1ab* gene. (B) Ct values of *N* gene. (C) Ct values of *S* gene. (D) Ct values of the mean of *ORF1ab*, *N* and *S* genes. Median is represented as a solid black line, interquartile ranges are represented by boxes, upper and lower adjacent values are represented by whiskers, and outliers are represented by isolated points. (mo) months. (yr) years.

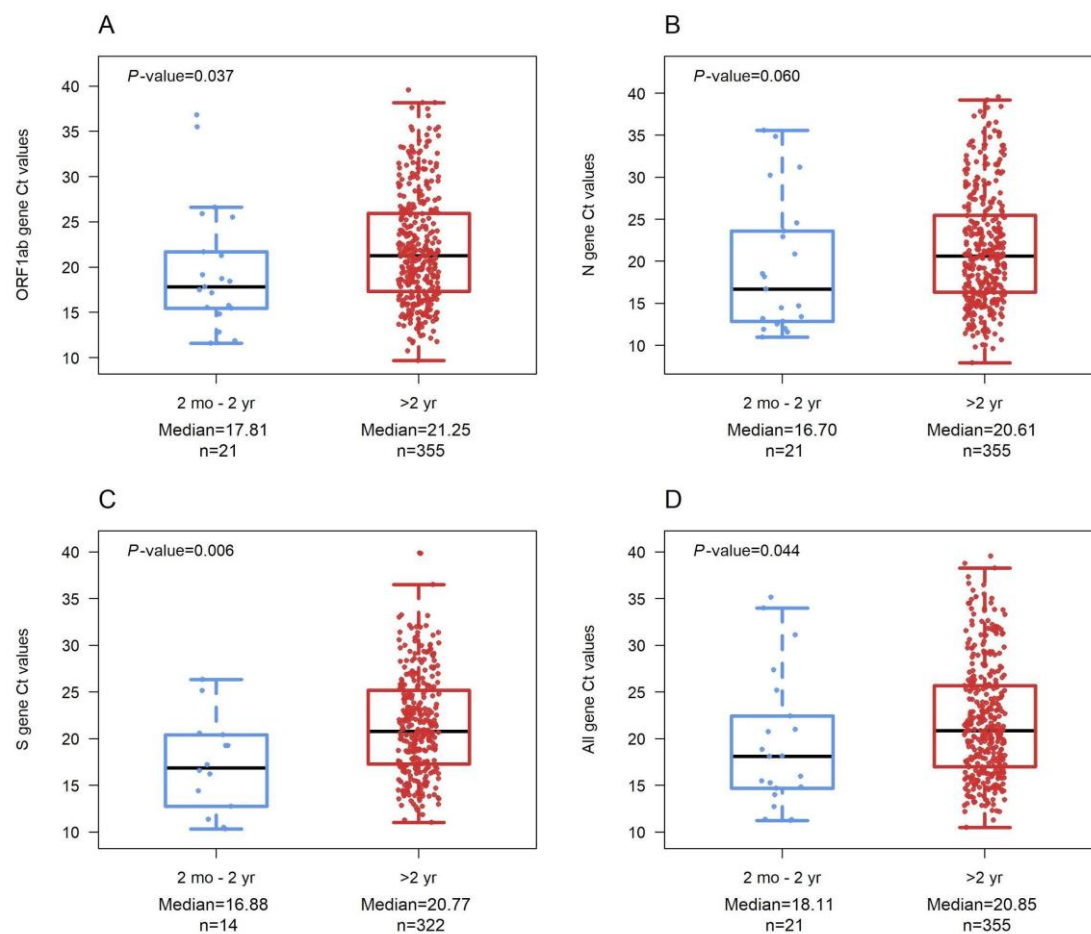


Figure 4. Comparison of Ct values of infants versus children and adults with confirmed SARS-CoV-2 infection. (A) Ct values of *ORF1ab* gene. (B) Ct values of *N* gene. (C) Ct values of *S* gene. (D) Ct values of the mean of *ORF1ab*, *N* and *S* genes. Median is represented as a solid black line, interquartile ranges are represented by boxes, upper and lower adjacent values are represented by whiskers, and outliers are represented by isolated points. (mo) months. (yr) years.

Median of SO at sample collection was lower in infants (2 days, IQR 1-3, range 1-7) than those >2 years (3 days, IQR 2-4, range 0-7) with $P = 0.01$. Demographic and baseline clinic details are presented in Supplementary Table 1. All infants were outpatients, whereas among children and adults, 324 (91.3%) participants were seen as outpatients; 28 (7.9%) were admitted (including one child), and 3 (0.8%) to inpatient unit and ICU (all adults), respectively.

Discussion

Our findings reinforce some previous findings suggesting that children do not have lower SARS-CoV-2 viral loads, as compared to adults¹². Going a step further than this latter study, infants with positive SARS-CoV-2 testing had even lower Ct values when compared to other age groups. It is important to remember that there was no clinical correlation with these low Ct results in infants, since they all presented very mild disease.

As suggested by Yonker et al⁴ children could carry higher viral loads even with mild symptoms. Yet another study confirms the finding from the study in California, suggesting that children younger than five years of age presented higher viral load when compared with older children and adults^{3,12}. However, recent viral load comparisons across age groups have yielded inconsistent conclusions^{3,12,13}. Some studies following adults only show a positive correlation between higher SARS-CoV-2 viral load with disease severity, need of mechanical ventilation, and/or higher mortality rates, which is not the case in children. The reasons for such differences in the relation of viral load and severity across age groups are not yet fully understood¹⁴.

Although viral load may not be the only determinant of transmission of SARS-CoV-2, it is probably one of the most important factors. On the other hand, as children usually present with a milder form of disease, the lower frequency of cough and the generation of droplets and aerosols may have some impact in reducing the risk of aerosolized transmission. However, despite the usual milder disease in children, our findings highlight that efforts to mitigate transmission should include this age group. The finding of a higher viral load in, since the use of masks have not been recommended for this age group^{15,16}.

Our study has some limitations worth mentioning. We have included only symptomatic participants during the early stage of SARS-CoV-2 infection, so that we cannot draw conclusions about asymptomatic individuals or those later in the course of the disease.

Another limitation was a restricted sample size of infected children. Social distancing, closed schools and daycare centers, together with the concern to take children to ERs have led to a sharp reduction in the overall number of pediatric consultations. Therefore, the real scenario of COVID-19 in the pediatric population is not yet known^{13,17,18}. There was also a great variability observed in the days of SO to inclusion, which could introduce some bias introduced by different timing for PCR collection, as not all subjects were at the same stage of disease. Furthermore, the quality and volume of viral RNA on collected swabs could vary depending on how sample collection was conducted¹⁹. We have not corrected our sample for the amount of viral RNA, since it would only add another step to the diagnostic routine that was already overstretched at that point of the pandemic. But it is well known that Cycle threshold values can be affected by a batch effect²⁰, since variations among different runs can occur.

Despite these limitations our findings are strong enough to suggest that symptomatic children may play a significant role in SARS-CoV-2 transmission since they harbor viral loads that are not lower than adults. Our finding suggesting that infants had even lower Ct values (thus higher viral load) than all other age strata raises some concern, because it indicates that when daycare activities return to "normal" while transmission of SARS-CoV-2 is still running in the community, this specific population may be a significant source of contamination to adults and older children.

Conclusion

Our findings strongly suggest that symptomatic children have equivalent Ct values when compared to adults. Furthermore, our study is the first to describe that infants present even lower SARS-CoV-2 RT-PCR Ct levels, indicating that this age group may play a significant role as spreaders of SARS-CoV-2 transmission.

Funding

This work was supported by the Brazilian Ministry of Health, through the Institutional Development Program of the Brazilian National Health System (PROADI-SUS) in collaboration with Hospital Moinhos de Vento. The Ministry of Health had no role in study design, sample and data collection, data analysis and interpretation, and in the decision to submit the article for publication.

Conflict of Interest

The authors declare no conflict of interest.

Acknowledgments

We thank the Scientific Committee of the Research Support Nucleus (NAP) of Moinhos de Vento Hospital for technical-scientific consultancy. We thank the statistician Matias Segelis Vieira who supported data analysis. We thank the inclusion personal, laboratory team, and site staff from Hospital Moinhos de Vento and from Hospital Restinga e Extremo Sul. Aline Andrea da Cunha, Joao Ronaldo Mafalda Krauser, Paulo Sergio Kroeff Schmitz, Sidiclei Machado Carvalho, Fabio Jose Rockenbach, Kelly Viegas Antunes, Marcelo da Silva Ferreira, Rafael Garcia Trindade, Thayna Silva Lino, Tiago da Silva Silvano, Adriana da Silva Silveira, Alceu Kuckoski, Ana Paula da Silva Lopes, Andreia Escobar da Costa, Clarice Cardoso Machado, Erica Vieira da Silva, Evelin Inácia da Silva, Luciana Rodrigues Ribeiro, Marcelly Mayr da Costa, Morgana Thais Carollo Fernandes and Rafael da Silva Cassafuz.

COVIDa study group

Adriane Isabel Rohden, Ana Carolina Monteiro da Rocha, Ana Paula dos Santos, Camila Bonalume Dall'Aqua, Camila Dietrich, Caroline Cabral Robinson, Catia Moreira Guterres, Charles Francisco Ferreira, Débora Vacaro Fogazzi, Denise Arakaki-Sanchez, Eliana Marcia da Ros Wendland, Emerson Silveira de Brito, Fernanda Lutz Tolves, Fernando Rovedder Boita, Francieli Fontana Sutile Tardetti Fantinato, Giovana Petracco de Miranda, Gisele Alcina Nader Bastos, Glaucia Fragoso Hohenberger, Jaina da Costa Pereira, Leonardo Araújo Pinto, Madelaine Correa de Oliveira, Maicon Falavigna, Maristênia Machado Araújo, Patricia Bartholomay Oliveira, Raul Correia da Silva, Regis Goulart Rosa, Shirlei Villanova Ribeiro, Tássia Rolim Camargo, Thainá Dias Luft, Thaís Jacobsen Duarte, Thayane Martins Dornelles, Tiago Fazolo and William Jones Dartora.

References

1. Pan Y, Zhang D, Yang P, Poon LLM, Wang Q. Viral load of SARS-CoV-2 in clinical samples. *Lancet Infect Dis* 2020;20(4):411–412.
2. Gorbalenya AE, Baker SC, Baric RS, Groot RJ de, Drosten C, Gulyaeva AA, Haagmans BL, Lauber C, Leontovich AM, Neuman BW, et al. Severe acute respiratory syndrome-related coronavirus: The species and its viruses – a statement of the Coronavirus Study Group. *bioRxiv* 2020 Feb 11:2020.02.07.937862.
3. Heald-Sargent T, Muller WJ, Zheng X, Rippe J, Patel AB, Kociolek LK. Age-Related Differences in Nasopharyngeal Severe Acute Respiratory Syndrome Coronavirus 2 (SARS-CoV-2) Levels in Patients With Mild to Moderate Coronavirus Disease 2019 (COVID-19). *JAMA Pediatr* 2020;174(9):902.
4. Yonker LM, Neilan AM, Bartsch Y, Patel AB, Regan J, Arya P, Gootkind E, Park G, Hardcastle M, John AS, et al. Pediatric Severe Acute Respiratory Syndrome Coronavirus 2 (SARS-CoV-2): Clinical Presentation, Infectivity, and Immune Responses. *J Pediatr* 2020;227:45-52.e5.

5. La Scola B, Le Bideau M, Andreani J, Hoang VT, Grimaldier C, Colson P, Gautret P, Raoult D. Viral RNA load as determined by cell culture as a management tool for discharge of SARS-CoV-2 patients from infectious disease wards. *Eur J Clin Microbiol Infect Dis* 2020;39(6):1059–1061.
6. Bullard J, Dust K, Funk D, Strong JE, Alexander D, Garnett L, Boodman C, Bello A, Hedley A, Schiffman Z, et al. Predicting infectious SARS-CoV-2 from diagnostic samples. *Clin Infect Dis Off Publ Infect Dis Soc Am* 2020 May 22 [accessed 2021 Feb 18]. <https://www.ncbi.nlm.nih.gov/pmc/articles/PMC7314198/>
7. Pujadas E, Chaudhry F, McBride R, Richter F, Zhao S, Wajnberg A, Nadkarni G, Glicksberg B, Houldsworth J, Cordon-Cardo C. SARS-CoV-2 Viral Load Predicts COVID-19 Mortality. *medRxiv* 2020 Jun 12:2020.06.11.20128934.
8. Yasuhara J, Kuno T, Takagi H, Sumitomo N. Clinical characteristics of COVID-19 in children: A systematic review. *Pediatr Pulmonol* 2020;55(10):2565–2575.
9. Fialkowski A, Gernez Y, Arya P, Weinacht KG, Kinane TB, Yonker LM. Insight into the pediatric and adult dichotomy of COVID-19: Age-related differences in the immune response to SARS-CoV-2 infection. *Pediatr Pulmonol* 2020;55(10):2556–2564.
10. He X, Lau EHY, Wu P, Deng X, Wang J, Hao X, Lau YC, Wong JY, Guan Y, Tan X, et al. Temporal dynamics in viral shedding and transmissibility of COVID-19. *Nat Med* 2020;26(5):672–675.
11. R Core Team. R: The R Project for Statistical Computing. 2017 [accessed 2021 Feb 11]. <https://www.r-project.org/>
12. Madera S, Crawford E, Langelier C, Tran NK, Thornborrow E, Miller S, DeRisi JL. Nasopharyngeal SARS-CoV-2 viral loads in young children do not differ significantly from those in older children and adults. *Sci Rep* 2021;11(1):3044.
13. Baggio S, L'Huillier AG, Yerly S, Bellon M, Wagner N, Rohr M, Huttner A, Blanchard-Rohner G, Loevy N, Kaiser L, et al. Severe Acute Respiratory Syndrome Coronavirus 2 (SARS-CoV-2) Viral Load in the Upper Respiratory Tract of Children and Adults With Early Acute Coronavirus Disease 2019 (COVID-19). *Clin Infect Dis* 2020 [accessed 2021

Feb 19];(c1aa1157). <https://doi.org/10.1093/cid/c1aa1157>

14. Magleby R, Westblade LF, Trzebucki A, Simon MS, Rajan M, Park J, Goyal P, Safford MM, Satlin MJ. Impact of SARS-CoV-2 Viral Load on Risk of Intubation and Mortality Among Hospitalized Patients with Coronavirus Disease 2019. *Clin Infect Dis Off Publ Infect Dis Soc Am* 2020 Jun 30 [accessed 2021 Feb 18]. <https://www.ncbi.nlm.nih.gov/pmc/articles/PMC7337625/>

15. World Health Organization. Coronavirus disease (COVID-19): Children and masks. [accessed 2021 Apr 12]. <https://www.who.int/news-room/q-a-detail/q-a-children-and-masks-related-to-covid-19>

16. Centers for Disease Control and Prevention. COVID-19 and Your Health. *Cent Dis Control Prev* 2020 Feb 11 [accessed 2021 Apr 12]. <https://www.cdc.gov/coronavirus/2019-ncov/daily-life-coping/children/protect-children.html>

17. Idele P, Anthony D, You D, Luo C, Mofenson L. The evolving picture of SARS-CoV-2 and COVID-19 in children: critical knowledge gaps. *BMJ Glob Health* 2020 [accessed 2021 Feb 19];5(9). <https://www.ncbi.nlm.nih.gov/pmc/articles/PMC7496567/>

18. Viner RM, Mytton OT, Bonell C, Melendez-Torres GJ, Ward J, Hudson L, Waddington C, Thomas J, Russell S, van der Klis F, et al. Susceptibility to SARS-CoV-2 Infection Among Children and Adolescents Compared With Adults: A Systematic Review and Meta-analysis. *JAMA Pediatr* 2021;175(2):143.

19. Wishaupt JO, Ploeg T van der, Smeets LC, Groot R de, Versteegh FGA, Hartwig NG. Pitfalls in interpretation of CT-values of RT-PCR in children with acute respiratory tract infections. *J Clin Virol* 2017;90:1–6.

20. Han MS, Byun J-H, Cho Y, Rim JH. RT-PCR for SARS-CoV-2: quantitative versus qualitative. *Lancet Infect Dis* 2021;21(2):165.

Supplementary Table 1. Demographic and baseline clinical characteristics of included subjects.

Variable	All participants (n = 376)	2 mo - 2 yr (n = 21)	>2 yr (n = 355)	P value
Age, median (IQR)	33.5 (21.7-43.4)	1.2 (0.6-1.7)	34.6 (24.1-44.0)	1.35e-14*
Female sex, n (%)	217 (57.7)	11 (52.4)	206 (58.0)	0.78†
Active or passive smoking, n (%)	69 (18.4)	3 (14.3)	66 (18.6)	1.00‡
Duration of symptoms to sample collection, median (IQR)	3.0 (2.0-4.0)	2.0 (1.0-3.0)	3.0 (2.0-4.0)	0.01*
Symptoms				
Cough, n (%)	302 (80.3)	14 (66.7)	288 (81.1)	0.15‡
Fever, n (%)	257 (68.3)	18 (85.7)	239 (67.3)	0.15†
Coryza, n (%)	243 (64.6)	14 (66.7)	229 (64.5)	1.00†
Blocked nose, n (%)	199 (52.9)	9 (42.9)	190 (53.5)	0.44†
Appetite loss, n (%)	190 (50.5)	12 (57.1)	178 (50.1)	0.73†
Sputum production, n (%)	129 (34.3)	7 (33.3)	122 (34.8)	1.00†
Conjunctivitis, n (%)	124 (33.0)	4 (19.0)	120 (33.8)	0.29†
Diarrhea, n (%)	107 (28.5)	4 (19.0)	103 (29.0)	0.45†
Vomiting, n (%)	50 (13.3)	6 (28.6)	44 (12.4)	0.05‡
Skin rash, n (%)	17 (4.5)	5 (23.8)	12 (3.4)	0.001‡
Chronic medical conditions				
Obesity, n (%)	93 (24.7)	1 (4.8)	92 (25.9)	0.19‡
Asthma, n (%)	28 (7.4)	0 (0.0)	28 (7.9)	1.00‡
COPD, n (%)	6 (1.6)	0 (0.0)	6 (1.7)	1.00‡

Previous tuberculosis, n (%)	4 (1.1)	0 (0.0)	4 (1.1)	1.00‡
HIV, n (%)	1 (0.3)	0 (0.0)	1 (0.3)	1.00‡
Congenital heart disease, n (%)	1 (0.3)	0 (0.0)	1 (0.3)	1.00‡
* Mann-Whitney-Wilcoxon test; † Pearson's Chi-squared test; ‡ Fisher's exact test				