

# 1 Mid-Regional pro-Adrenomedullin (MR- 2 proADM), C-Reactive Protein (CRP) and Other 3 Biomarkers in the Early Identification of 4 Disease Progression in COVID-19 Patients in 5 the Acute NHS Setting. 6

7 Nathan Moore<sup>1#</sup>, Rebecca Williams<sup>1#</sup>, Matilde Mori<sup>2</sup>, Beatrice Bertolusso<sup>1</sup>, Gabrielle Vernet<sup>1</sup>, Jessica  
8 Lynch<sup>1</sup>, Peter Philipson<sup>3</sup>, Thomas Ledgerwood<sup>1</sup>, Stephen P. Kidd<sup>1</sup>, Claire Thomas<sup>1</sup>, Veronica Garcia-  
9 Arias<sup>1</sup>, Michelle Young<sup>4</sup>, Kordo Saeed<sup>2,5</sup>, Kirsty Gordon<sup>1</sup>, Nicholas Cortes<sup>1,2,6,7\*</sup>

10  
11 <sup>1</sup>Hampshire Hospitals NHS Foundation Trust, Basingstoke and North Hampshire Hospital,  
12 Basingstoke, UK

13 <sup>2</sup>University of Southampton, School of Medicine, UK

14 <sup>3</sup>Newcastle University, School of Mathematics, Statistics & Physics, UK

15 <sup>4</sup>Whittington Hospital, London, UK

16 <sup>5</sup>University Hospital Southampton NHS Foundation Trust, Southampton, UK

17 <sup>6</sup>Gibraltar Health Authority, Gibraltar, UK

18 <sup>7</sup>University of Gibraltar, Gibraltar, UK

19  
20  
21 #Joint first authors

22 \*Corresponding author:

23 [Nick.cortes@hhft.nhs.uk](mailto:Nick.cortes@hhft.nhs.uk)

24 01256 473202

25  
26 Keywords: MR-proADM, SARS-CoV-2, COVID-19, Mortality, Biomarkers, Emergency Department,  
27 Disease progression

28  
29  
30 **Background:** There is a lack of biomarkers validated for assessing clinical deterioration in  
31 COVID-19 patients upon presentation to secondary or tertiary care. This evaluation looked at  
32 the potential clinical application of a range of biomarkers, including C-Reactive Protein  
33 (CRP) and Procalcitonin (PCT) and Mid-Regional pro-adrenomedullin (MR-proADM), and  
34 White Cell Count to support prediction of clinical outcomes.

35  
36 **Methods:** Adult patients presenting to Hampshire Hospitals NHS Foundation Trust between  
37 April and June 2020 confirmed to have COVID-19 via RT-qPCR were included. Biomarkers  
38 were measured in blood samples taken within 24 hours of admission and logistic regression  
39 and area under the receiver operating characteristic (AUROC) curves were used to predict  
40 disease progression. The endpoints assessed were 30-day all-cause mortality, intubation  
41 and ventilation, admission to critical care and non-invasive ventilation (NIV) use.

42  
43 **Findings:** A total of 135 adult patients were identified. Elevated levels of MR-proADM were  
44 shown to have the greatest ability to predict 30-day mortality adjusting for age,  
45 cardiovascular disease, renal disease and neurological disease. A significant association  
46 was also noted between raised MR-proADM and CRP concentrations and the requirement  
47 for critical care admission and non-invasive ventilation, when controlling for covariates.

48  
**NOTE:** This preprint reports new research that has not been certified by peer review and should not be used to guide clinical practice.

49 **Interpretation:** The measurement of biomarkers, particularly MR-proADM and CRP in  
50 patients with confirmed COVID-19 infection upon admission to secondary care shows  
51 significant potential to support clinicians in the early identification of those at increased risk  
52 of disease progression and need for higher level care, subsequently enabling prompt  
53 escalation in clinical interventions and treatment.

54

55 **Funding:** No funding was required for this article

56

## 57 **Introduction**

58

59 Since initial reports of a cluster of pneumonia cases arising from Wuhan, Hubei and the subsequent  
60 identification of the causative *betacoronavirus*, the severe acute respiratory syndrome coronavirus 2  
61 (SARS-CoV-2) has infected over 100 million people globally and directly resulted in the deaths of  
62 approximately 2.3 million by January 2021.

63

64 The progressive multi-organ failure associated with SARS-CoV-2 mortality is driven in part by  
65 significant inflammation and microvascular thrombosis. Presence of SARS-CoV-2 within the  
66 endothelium can cause a secondary endotheliitis and an impairment of vascular blood flow, a pro-  
67 thrombotic state and vascular leakage.(1) During endotheliitis there is elevation of biomarkers, such  
68 as neutrophil extracellular traps, that can lead to microvascular thrombosis and inflammation.(2)

69

70 Adrenomedullin is a peptide that has been shown to have a role in preserving the integrity and  
71 stability of the endothelium after severe infection. Furthermore, it has potent vasodilatory  
72 properties, as well as having a role in immunomodulation and metabolic regulation. It is upregulated  
73 in several pathogenic processes, including sepsis and the progression of septic patients towards  
74 multi-organ failure(3-5).

75

76 The novel biomarkers mid-regional proadrenomedullin (MR-proADM) has also been shown to be  
77 predictive of poor clinical outcomes in patients with sepsis and infections involving the respiratory(6,  
78 7) and urinary(8, 9) systems. Similarly, it has been demonstrated during non-infective processes such  
79 as heart failure and kidney injury(10). As a precursor amino acid sequence that splits from  
80 proadrenomedullin, MR-proADM is used as a surrogate marker for adrenomedullin. It can be  
81 measured via an automated immunofluorescent assay, as levels are directly proportional to  
82 adrenomedullin which rapidly breaks down in blood.

83

84 The instigation of an appropriate management plan is dependent on an adequate assessment of the  
85 infection severity, which is determined by the host pathophysiological response and the virulence of  
86 the organism causing infection.

87 However, infection is a dynamic process with infection severity changing over time within an  
88 individual. As infection progresses, patients may transition from low severity to high severity which if  
89 not identified, may lead to delayed or inappropriate therapy.

90 Therefore, biomarkers that could help stratify risk of disease progression are of clinical interest as  
91 they may help guide appropriate early management and patient placement within hospital. A recent  
92 study by Saeed *et al.* found that the measurement of MR-proADM could effectively predict disease  
93 progression; identifying those at increased risk of mortality, those who would need ICU admission  
94 and those requiring a longer length of stay in hospital. Furthermore, they identified its potential use  
95 in facilitating early discharge from hospital, with no increase in mortality.(11)

96

97 The aim of this study was to assess the effectiveness of a number of biomarkers, both established  
98 and emerging, in the acute setting as prognostic markers to support clinicians in the early  
99 identification of patients with Covid-19 at risk of mortality, ICU admission and ventilation.

100

101  
102  
103  
104  
105  
106  
107  
108  
109  
110  
111  
112  
113  
114  
115  
116  
117  
118  
119  
120  
121  
122  
123  
124  
125  
126  
127  
128  
129  
130  
131  
132  
133  
134  
135  
136  
137  
138  
139  
140  
141  
142  
143  
144  
145  
146  
147  
148  
149  
150  
151

## Methods

### Study Design and Data Collection

In this observational study, we identified adult patients confirmed to have SARS-CoV-2 at a district general hospital, Hampshire Hospitals NHS Foundation Trust, during the first wave of the virus between April and June 2020. SARS-CoV-2 was detected by real-time reverse-transcription PCR (rRT-PCR) using the COVID-19 genesig® Real-Time PCR assay (Primerdesign Ltd, Chandler's Ford, UK). All blood samples analysed were collected as part of routine clinical care on admission to hospital. Measurement of C-reactive protein (CRP) on serum samples was performed on ADVIA 2400 analysers; procalcitonin (PCT) on Centaur XP analysers and full blood count (FBC) and differential white blood cell counts were performed on Ethylenediaminetetraacetic acid (EDTA) samples on Siemens Advia 2120i (all Siemens Healthineers, Tarrytown, New York, USA). Measurement of MR-proADM was performed (within 72 hours of collection, in line with manufacturer's guidance) on EDTA blood samples taken on admission using an immunoassay (B.R.A.H.M.S. KRYPTOR™, Thermo Fisher Scientific, Henningsdorf, Germany).

Patients were followed up until discharge, with demographics, comorbidities, admission and discharge dates, non-invasive ventilation (NIV) use, need for intubation and ventilation, admission to ICU and mortality data being anonymously collected.

### Statistical Analysis

Time to event analysis was performed with univariate and multivariate Cox proportional hazard models. However, this was only performed for clinical outcomes with a sufficiently high event per variable ratio. (12, 13) Time to event analysis was right-censored at 30 days. The Cox proportional hazard models were checked for proportionality by correlating sets of scaled Schoenfeld residuals with time, to test for independence between residuals and time. Where proportionality was not met stratification was performed as necessary. Hazard ratios and C-index score were calculated with corresponding 95% confidence intervals. Confounding variables for the multivariate analysis were selected based on those that were significant upon univariate logistic regression following Bonferroni correction, with a p-value of <0.005.

Symmetrically distributed variables were reported using the mean (standard deviation), whereas variables exhibiting a skewed distribution were reported using the median [first quartile – third quartile]. The Chi-square test ( $\chi^2$ ) was used to assess differences in categorical variables in the demographics and clinical characteristics between those who did and did not die within 30 days, with the Mann-Whitney U test being used to assess differences in continuous variables and Student's T-test for age.

Data analysis was performed using R version 4.0.1.

Receiver operating characteristic (ROC) curves with area under the curve (AUC) analysis was used to determine predictive value for each clinical endpoint with 95% confidence intervals to establish significance. To investigate if individual biomarkers offer a significant improvement in predicting an adverse outcome over a model incorporating previously identified confounding variables, as outlined above, AUC analyses were compared using a bootstrap method.

## 152 **Results**

153 Samples from 135 patients in total were analysed with a mean age of 64.6 years and a  
154 predominance of males (51.9% male vs 48.1% female). The patient group included 105 who had  
155 survived by thirty days post admission and 30 who had died by this timepoint. The characteristics of  
156 the patient cohort are described in Table 1.

157  
158 Median biomarker concentrations in this group showed elevated median CRP 59mg/L (Q1-Q3 range  
159 17 – 143) and MR-proADM 1.02 nmol/L (Q1-Q3 range 0.71 - 1.61); median levels within normal  
160 clinical ranges for total white blood cell count  $7.1 \times 10^9/L$  (Q1-Q3 range 5.2 – 9.65), neutrophils  $5.31$   
161  $\times 10^9/L$  (Q1-Q3 range 3.51 – 7.66) and PCT 0.13ng/mL (Q1-Q3 range 0.07 - 0.41) but a suppressed  
162 median lymphocyte count  $0.98 \times 10^9/L$  (Q1-Q3 range 0.70 – 1.36).

163  
164 Twenty-five of these patients were enrolled into the RECOVERY trial with 9 receiving standard care,  
165 6 received hydroxychloroquine, 6 received Lopinavir-Ritonavir and 3 received Azithromycin, all of  
166 which were deemed to have no clinical benefit.(14-16) One patient received dexamethasone as part  
167 of the RECOVERY trial. Otherwise none of the patients received other immunomodulation, including  
168 IL-6 inhibitors (tocilizumab or sarilumab), IL-1 inhibitors (such as anakinra) or convalescent plasma.  
169 Multivariate Cox regression adjusted for age, cardiovascular disease, renal disease and neurological  
170 disease. Proportionality was checked for all Cox regression models and stratification performed as  
171 necessary.

### 172 173 **MR-proADM**

174 For this novel biomarker Saeed et al (11) have previously derived and proposed, in a non-COVID-19  
175 acute patient population, a cut-off of 1.54 nmol/L as a predictor of elevated mortality, higher rate of  
176 ICU admission and longer length of stay. Applying this cut-off to our COVID-19 patient population  
177 shows significantly ( $p = 1.59 \times 10^{-5}$ ) lower mortality rate of 11.11% (N=11) in the patients with MR-  
178 proADM values  $< 1.54$  nmol/L (N=99 (73.33%)) compared to a higher mortality rate of 52.78% (N=19)  
179 in patients (N=36, (26.67%)) with MR-proADM values equal to or exceeding a cut-off of 1.54 nmol/L.  
180 None of the patients who died (N=30) had a MR-proADM value below the pre-defined threshold of  $<$   
181  $0.88$  nmol/L ( $p = 1.61 \times 10^{-9}$ ), previously proposed in a non-COVID-19 population by Saeed et al (11) as  
182 a potential cut-off for identifying patients at very low risk for deterioration and no mortality.  
183 Of interest, fifty-two (38.52%) patients with MR-proADM values of  $<0.88$  nmol/L had a median  
184 inpatient stay of 4 days (interquartile range [IQR] 0.75 – 9 days), representing a significantly shorter  
185 length of stay than those with an MR-proADM of  $>0.88$  nmol/L whose median stay was 12 days (IQR  
186 5 – 22.5 days),  $p < 0.00001$ .

### 187 188 **30 Day Mortality**

189 Table 1 compares the patient demographics and clinical characteristics between survivors and non-  
190 survivors. Of note CRP, PCT and MR-proADM were all significantly raised amongst those that did not  
191 survive at day 30.

192  
193 Univariate Cox regression analysis found MR-proADM to have the greatest ability to predict 30 day  
194 mortality (Wald 20.3, HR 1.5455 [1.279-1.868]), with CRP also proving effective at predicting 30 day  
195 mortality (Wald 4.02, HR 1.0034 [1.000-1.007]) as shown in Table 2.

196  
197 Although PCT was significant for univariate Cox regression analysis (Wald 11.54, HR 1.0898 [1.037-  
198 1.145]), the assumption of proportional hazards was not supported for PCT. Rather than attempting  
199 to estimate a time-dependent coefficient in order to include covariates with time-varying  
200 coefficients multivariate analysis was not performed. Both MR-proADM (Wald 23.735, HR  
201 1.809[1.454-2.407]) and CRP (Wald 12.166, HR 1.0069[1.003-1.011]) remained significant for  
202 predicting 30 day mortality following adjustment for age, cardiovascular disease, renal disease and

203 neurological disease (Table 3). Similarly, lymphocyte count was significant in predicting 30 day  
204 mortality after adjusting for co-variates (Wald 6.6564, HR 1.1213[1.028-1.223]).

205

206 MR-proADM offered a significant improvement in predicting 30 day mortality over a model  
207 combining age, renal disease, cardiovascular disease and neurological disease with an AUC of 0.874  
208 ( $p=0.01727$ ), whereas CRP did not offer an improvement ( $p=0.1464$ ).

209

#### 210 **Intubation and Ventilation**

211 Elevated MR-proADM (Wald 12.37, HR 1.6015[1.232-2.082]) and CRP (Wald 16.57, HR 1.0069 [1.004-  
212 1.010]) were both associated with an increase in the need for intubation and ventilation when  
213 performing univariate cox regression. No firm conclusions are offered here from a multivariate  
214 analysis for prediction of need for intubation and ventilation due to the lower number of events per  
215 predictor variable, though the results are suggestive for both MR-proADM and CRP having efficacy in  
216 predicting the need for intubation.

217

#### 218 **Admission to Critical Care**

219 On univariate analysis only CRP demonstrated a significant association with a requirement for  
220 admission to critical care (Wald 15.83, HR [1.0055-1.008]), which was maintained once controlled for  
221 covariates, however proportionality was affected by renal disease (Chisq 4.2243,  $p=0.04$ ), which was  
222 therefore taken out by stratification (Wald 22.062, HR 1.0078[1.005-1.011]). Although insignificant  
223 on univariate analysis MR-proADM (Wald 3.2, HR 1.257[0.978-1.615]) did exhibit a significant  
224 association with a requirement for critical care once covariates were controlled for (Wald 10.151, HR  
225 1.5451 [1.182-2.019]).

226

227 Only CRP provided an improvement over the previously described combined model with an AUC of  
228 0.8026 ( $p=0.012$ ).

229

#### 230 **Non-Invasive Ventilation**

231 Once again elevated CRP (Wald 15.53, HR 1.0061[1.003-1.009]) and MR-proADM (Wald 11.62, HR  
232 1.4992[1.188-1.892]) were associated with requirement for NIV following univariate analysis, with  
233 both CRP (Wald 18.293 HR 1.0081[1.004-1.012]) and MR-proADM (Wald 30.393, HR 2.5230[1.816-  
234 3.506]) both retaining significance on multivariate analysis. Lymphocyte count was not a constant  
235 hazard and so further analysis was omitted rather than estimating a time-dependent coefficient.

236

237 Both CRP and MR-proADM offered an improvement over the combined model with AUCs of 0.8544  
238 ( $p=0.000375$ ) and 0.8139 ( $p=0.001052$ ) respectively.

239

240

241

242 **Table 1. Characteristics with regards to 30-day mortality**

Patient characteristics	Total patient cohort (N=135)	Survivors (N=105)	Non-Survivors (N=30)	p-value
<b>Demographics</b>				
Age (years) (mean, SD)	64.6 (19.5)	60.0 (18.9)	80.7 (11.6)	1.22x10 <sup>-11</sup>
Male gender (N, %)	70 (51.9%)	56 (53.3%)	14 (46.7%)	0.6547
<b>Disease progression and mortality</b>				
Non-Invasive Ventilation (N, %)	23 (17.04%)	14 (13.3%)	9 (30.0%)	0.0511
Intensive care unit admission (N, %)	31 (22.96%)	25 (23.8%)	6 (20.0%)	0.7010
Invasive Ventilation (N, %)	16 (11.85%)	12 (11.4%)	4 (13.3%)	0.6366
30-day mortality (N, %)	30 (22.22%)			
Hospital length of stay (days)(median, Q1-Q3)	8 [3 - 17]	8 [2 - 17]	11.5 [5.25 - 15.75]	0.0722
<b>Comorbidities</b>				
Cardiovascular disease (N, %)	75 (55.6%)	52 (49.5%)	23 (76.7%)	0.0786
Respiratory disease (N, %)	35 (25.9%)	30 (28.6%)	5 (16.7%)	0.2587
Haematological disease (N, %)	5 (3.7%)	5 (4.8%)	0 (0.0%)	0.2320
Immunodeficiency (N, %)	5 (3.7%)	5 (4.8%)	0 (0.0%)	0.2320
Diabetes (N, %)	32 (23.7%)	26 (24.8%)	6 (20.0%)	0.6366
Renal Disease (N, %)	23 (17.0%)	13 (12.4%)	10 (33.3%)	0.0142
Liver Disease (N, %)	9 (6.7%)	8 (7.6%)	1 (3.3%)	0.4227
Malignancy (N, %)	20 (14.8%)	14 (13.3%)	6 (20.0%)	0.4028
Central Nervous System Disease (N, %)	27 (20.0%)	16 (15.2%)	11 (36.7%)	0.0206
<b>Biomarker concentrations</b>				
CRP <sup>1</sup> (mg/L) (median, Q1-Q3)	59 [17 - 143]	52 [13 - 143]	102 [43 - 148.75]	0.0301
White Cell Count (10 <sup>9</sup> /L) (median, Q1-Q3)	7.1 [5.2 - 9.65]	7.1 [5.5 - 9.7]	7.0 [4.425 - 8.675]	0.1469
Neutrophil Count (10 <sup>9</sup> /L) (median, Q1-Q3)	5.31 [3.51 - 7.66]	5.33 [3.72 - 8.0]	5.23 [3.235 - 6.8475]	0.2005
Lymphocyte Count (10 <sup>9</sup> /L) (median, Q1-Q3)	0.98 [0.70 - 1.36]	0.99 [0.74 - 1.41]	0.845 [0.5675 - 1.2675]	0.1469
PCT <sup>2</sup> (ng/mL) (median, Q1-Q3)	0.13 [0.07 - 0.41]	0.12 [0.07 - 0.2853]	0.3595 [0.09 - 0.5575]	0.0307
MR-proADM (nmol/L) (median, Q1-Q3)	1.02 [0.71 - 1.61]	0.899 [0.6284 - 1.316]	1.842 [1.3943 - 2.6323]	<0.00001

243  
244 **Table 2. Univariate Cox regression for prediction of 30-day mortality, requirement of critical care, NIV and**  
245 **intubation and ventilation using biomarkers in baseline bloods**

Biomarker	Patients (N)	Cases (N)	Wald	D.F.	C-index [95% CI]	HR [95% CI]	p-value
<b>Prediction of 30-day mortality</b>							
MR-proADM	135	30	20.3	1	0.811 [0.746-0.876]	1.5455 [1.279-1.868]	6.64e-6
CRP <sup>1</sup>	135	30	4.02	1	0.613 [0.515-0.711]	1.0034 [1.000-1.007]	0.0449
PCT <sup>2</sup>	116	26	11.54	1	0.621 [0.511-0.731]	1.0898 [1.037-1.145]	0.000681
Neutrophils	135	30	0.73	1	0.549 [0.445-0.653]	0.9555 [0.861-1.061]	0.394
Lymphocytes	135	30	3.53	1	0.448 [0.338-0.558]	1.0920 [0.996-1.197]	0.0603
<b>Prediction of requiring critical care admission</b>							
MR-proADM	135	31	3.2	1	0.614 [0.518-0.710]	1.2570 [0.978-1.615]	0.0737
CRP <sup>1</sup>	135	31	15.83	1	0.716 [0.624-0.808]	1.0055 [1.003-1.008]	0.0000695
PCT <sup>2</sup>	116	31	0.03	1	0.687 [0.595-0.779]	1.0050 [0.951-1.062]	0.86
Neutrophils	135	31	0.37	1	0.609 [0.511-0.707]	1.0183 [0.960-1.080]	0.544
Lymphocytes	135	31	2.52	1	0.465 [0.357-0.573]	1.0759 [0.983-1.178]	0.113
<b>Prediction of requiring NIV</b>							
MR-proADM	135	23	11.62	1	0.726 [0.634-0.818]	1.4992 [1.188-1.892]	0.000651
CRP <sup>1</sup>	135	23	15.53	1	0.725 [0.617-0.833]	1.0061 [1.003-1.009]	0.0000813
PCT <sup>2</sup>	116	22	0.1	1	0.772 [0.682-0.862]	1.0098 [0.952-1.072]	0.747
Neutrophils	135	23	0.06	1	0.432 [0.324-0.540]	0.9883 [0.901-1.085]	0.804
Lymphocytes	135	23	4.81	1	0.552 [0.442-0.662]	1.0991 [1.010-1.196]	0.0283
<b>Prediction of intubation and ventilation</b>							
MR-proADM	135	16	12.37	1	0.748 [0.650-0.846]	1.6015 [1.232-2.082]	0.000435
CRP <sup>1</sup>	135	16	16.57	1	0.745 [0.614-0.876]	1.0069 [1.004-1.010]	0.0000469
PCT <sup>2</sup>	116	16	0.63	1	0.836 [0.746-0.926]	1.0215 [0.969-1.077]	0.429
Neutrophils	135	16	0.43	1	0.641 [0.514-0.768]	1.0259 [0.950-1.107]	0.513
Lymphocytes	135	16	0.09	1	0.468 [0.337-0.599]	0.9415 [0.630-1.408]	0.769

246  
247  
  

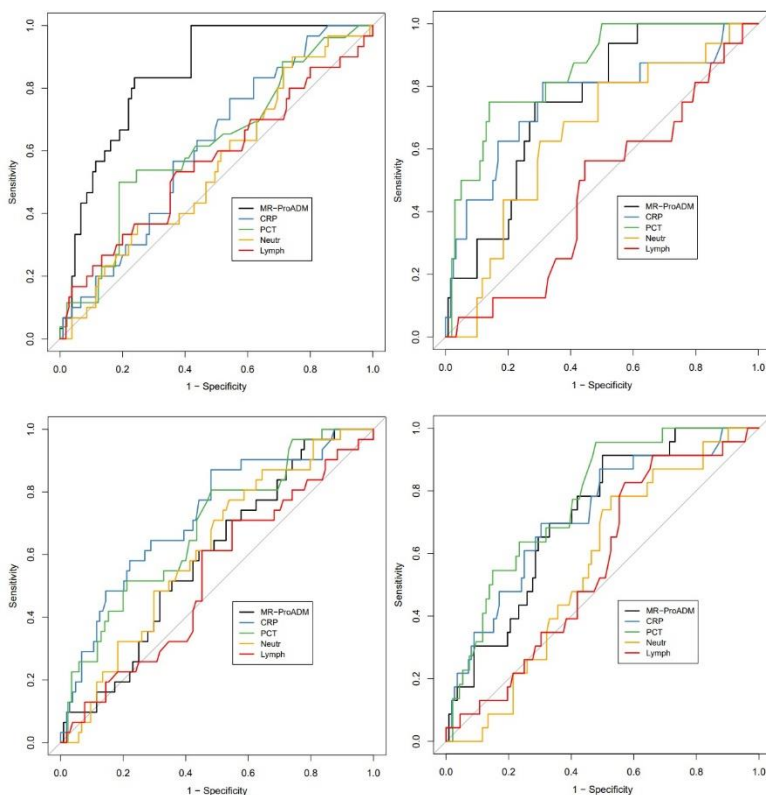
---

<sup>1</sup> C-reactive protein  
<sup>2</sup> Procalcitonin

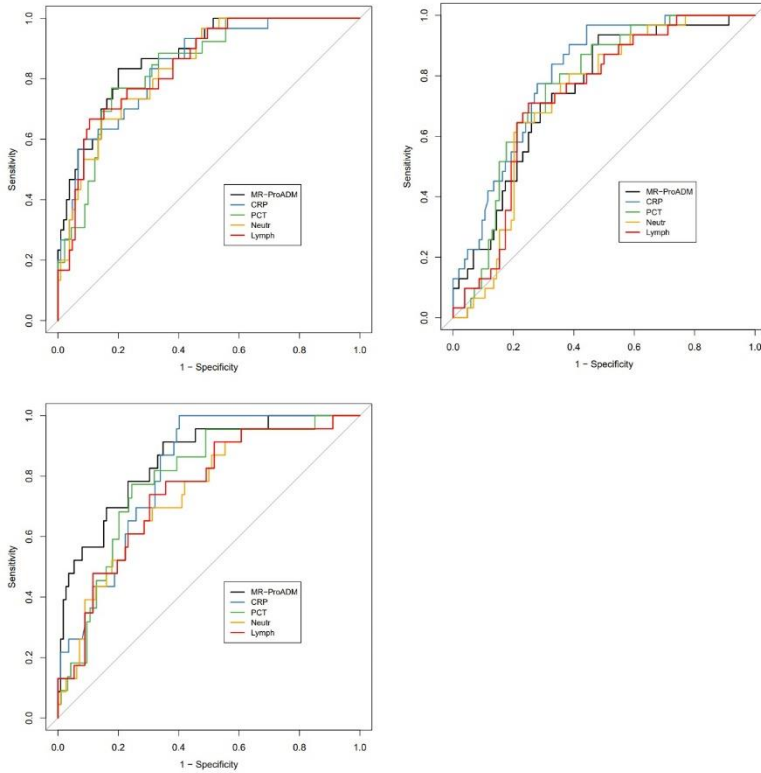
248 **Table 3. Multivariate Cox regression for prediction of 30-day mortality, requirement of critical care, NIV and**  
 249 **intubation and ventilation using biomarkers in baseline bloods**

Biomarker	Patients (N)	Cases (N)	Wald	D.F.	C-index [95% CI]	HR [95% CI]	p-value
<b>Prediction of 30-day mortality</b>							
MR-proADM	135	30	23.736	5	0.827 [0.756-0.898]	1.8709 [1.454-2.407]	1.1e-6
CRP <sup>1</sup>	135	30	12.166	5	0.788 [0.704-0.872]	1.0069 [1.003-1.011]	0.000487
PCT	116	26	-	-	-	-	-
Neutrophils	135	30	0.9235	5	0.808 [0.745-0.871]	0.9445 [0.841-1.061]	0.336303
Lymphocytes	135	30	6.6564	5	0.791 [0.713-0.869]	1.1213 [1.028-1.223]	0.009879
<b>Prediction of requiring critical care admission</b>							
MR-proADM	135	31	10.151	5	0.713 [0.621-0.805]	1.5451 [1.182-2.019]	0.00144
CRP <sup>1</sup>	135	31	22.062	4	0.775 [0.702-0.848]	1.0078 [1.005-1.011]	2.64e-6
PCT <sup>2</sup>	116	31	0.6084	5	0.715 [0.631-0.799]	1.0254 [0.963-1.092]	0.43564
Neutrophils	135	31	0.5761	5	0.686 [0.596-0.776]	1.0221 [0.966-1.081]	0.44772
Lymphocytes	135	31	1.4066	5	0.689 [0.599-0.779]	1.0638 [0.961-1.178]	0.23544
<b>Prediction of requiring NIV</b>							
MR-proADM	135	23	30.393	5	0.828 [0.740-0.916]	2.5230 [1.816-3.506]	3.53e-8
CRP <sup>1</sup>	135	23	18.293	5	0.799 [0.725-0.873]	1.0081 [1.004-1.012]	1.89e-5
PCT <sup>2</sup>	116	22	1.39	5	0.755 [0.659-0.851]	1.0454 [0.971-1.125]	0.2383
Neutrophils	135	23	0.0266	5	0.72 [0.616-0.824]	0.9923 [0.905-1.089]	0.8706
Lymphocytes	135	23	-	-	-	-	-
<b>Prediction of intubation and ventilation</b>							
MR-proADM	135	16	22.648	5	0.793 [0.687-0.899]	2.2457 [1.609-3.134]	1.94e-6
CRP <sup>1</sup>	135	16	18.318	5	0.803 [0.713-0.893]	1.0088 [1.005-1.013]	1.87e-5
PCT <sup>2</sup>	116	16	2.241	5	0.715 [0.617-0.813]	1.0558 [0.983-1.134]	0.134
Neutrophils	135	16	0.4543	5	0.665 [0.563-0.767]	1.0254 [0.953-1.103]	0.500
Lymphocytes	135	16	0.2663	5	0.67 [0.554-0.786]	0.8260 [0.400-1.707]	0.606

250  
 251 **Figure 1. Univariate Receiver Operating Characteristic Curves for predicting outcomes starting top-left and**  
 252 **progressing clockwise towards bottom-left A) 30 Day Mortality B) Critical Care Admission C) NIV Use D)**  
 253 **Intubation and Ventilation**



286 **Figure 2. Multivariate Receiver Operating Characteristic Curves for predicting outcomes, starting top-left and**  
 287 **progressing clockwise A) 30 Day Mortality B) Critical Care Admission and C) NIV Use**



320 **Table 4. Univariate area under receiver operating characteristic curve data for predicting various outcomes**  
 321 **from baseline bloods**

Biomarker	Patients (N)	Cases (N)	D.F.	AUC [95% CI]
<b>30 day mortality</b>				
MR-proADM	135	30	1	0.8441 [0.7761-0.9122]
CRP <sup>1</sup>	135	30	1	0.6132 [0.5066-0.7198]
PCT <sup>2</sup>	116	26	1	0.6212 [0.4963-0.7460]
Neutrophils	135	30	1	0.5503 [0.4356-0.6650]
Lymphocytes	135	30	1	0.5629 [0.4373-0.6884]
<b>Critical Care Admission</b>				
MR-proADM	135	31	1	0.594 [0.4873-0.7007]
CRP <sup>1</sup>	135	31	1	0.7238 [0.6213-0.8263]
PCT <sup>2</sup>	116	31	1	0.6856 [0.5771-0.7941]
Neutrophils	135	31	1	0.6158 [0.5104-0.7213]
Lymphocytes	135	31	1	0.5296 [0.4147-0.6446]
<b>NIV</b>				
MR-proADM	135	23	1	0.7189 [0.617-0.8209]
CRP <sup>1</sup>	135	23	1	0.722 [0.6068-0.8373]
PCT <sup>2</sup>	116	22	1	0.7706 [0.6734-0.8677]
Neutrophils	135	23	1	0.5615 [0.4505-0.6726]
Lymphocytes	135	23	1	0.5646 [0.4476-0.6817]
<b>Intubation and Ventilation</b>				
MR-proADM	135	16	1	0.75 [0.6434-0.8566]
CRP <sup>1</sup>	135	16	1	0.7545 [0.6059-0.903]
PCT <sup>2</sup>	116	16	1	0.8497 [0.7565-0.9429]
Neutrophils	135	16	1	0.6476 [0.5104-0.7848]
Lymphocytes	135	16	1	0.468 [0.324-0.612]

322



323 **Table 5. Multivariate area under receiver operating characteristic data for predicting various outcomes from**  
 324 **baseline bloods**

Biomarker	Patients (N)	Cases (N)	D.F.	AUC [95% CI]	Bootstrap
<b>30 day mortality</b>					
MR-proADM	135	30	5	0.874 [0.8085-0.9395]	0.01727
CRP <sup>1</sup>	135	30	5	0.8441 [0.769-0.9192]	0.1464
PCT <sup>2</sup>	116	26	5	0.8406 [0.7619-0.9193]	0.06908
Neutrophils	135	30	5	0.8394 [0.7667-0.9121]	0.1417
Lymphocytes	135	30	5	0.8448 [0.7716-0.918]	0.1056
<b>Critical Care Admission</b>					
MR-proADM	135	31	5	0.7466 [0.6553-0.8379]	0.1457
CRP <sup>1</sup>	135	31	5	0.8026 [0.7256-0.8796]	0.012
PCT <sup>2</sup>	116	31	5	0.7632 [0.6747-0.8517]	0.1465
Neutrophils	135	31	5	0.7252 [0.6359-0.8145]	0.2458
Lymphocytes	135	31	5	0.7317 [0.6413-0.8221]	0.2132
<b>NIV</b>					
MR-proADM	135	23	5	0.8544 [0.7727-0.9362]	0.000375
CRP <sup>1</sup>	135	23	5	0.8139 [0.7374-0.8904]	0.001052
PCT <sup>2</sup>	116	22	5	0.7872 [0.6884-0.8861]	0.03331
Neutrophils	135	23	5	0.7418 [0.6341-0.8496]	0.07907
Lymphocytes	135	23	5	0.7519 [0.6461-0.8578]	0.05353
<b>Intubation and Ventilation</b>					
MR-proADM	135	16	5	0.812 [0.7071-0.9169]	0.005858
CRP <sup>1</sup>	135	16	5	0.8183 [0.7176-0.9189]	0.002934
PCT <sup>2</sup>	116	16	5	0.7256 [0.6193-0.8319]	0.1324
Neutrophils	135	16	5	0.6817 [0.576-0.7874]	0.2557
Lymphocytes	135	16	5	0.6838 [0.5664-0.8012]	0.2675

325  
326

## 327 Discussion

328 Our study demonstrates that use of biomarkers, both established and novel, has significant potential  
 329 to support clinical decisions and aid in identification of COVID-19 patients at both high and low risk  
 330 for disease progression. Of the biomarkers evaluated, elevated MR-proADM and CRP concentrations  
 331 showed the greatest potential for clinical application for utilisation to aid prediction of 30-day  
 332 mortality, critical care admission requirement and need for both invasive and non-invasive  
 333 ventilation.

334  
 335 Of these, on multivariate regression analysis MR-proADM concentration showed the strongest  
 336 association with an increased 30-day mortality, requirement for non-invasive and invasive  
 337 ventilation, with CRP showing the strongest association with critical care admission. Our data are  
 338 also suggestive of an association between elevated MR-proADM and CRP concentration with a  
 339 progression to being intubated and ventilated, though more cases are required to verify this by  
 340 controlling for covariates. This is consistent with previous studies that have shown increased MR-  
 341 proADM levels to be predictive of intensive care requirement.(17) Gonzalez del Castillo *et al.*  
 342 identified MR-proADM to have the strongest association for ICU admission and mortality compared  
 343 to other blood biomarkers; with concentrations of >1.77nmol/L having significantly higher rates of  
 344 ICU stay (8.1% vs 1.6%; p<0.001) and disease progression (29.7% vs 4.9%; p<0.001) compared to low  
 345 MR-proADM concentrations.(18) Application of these and our own findings, applying previously  
 346 derived thresholds of 0.88 and 1.54nmol/L may support clinicians with decisions regarding earlier  
 347 transfer of selected patients to wards with staff with experience in non-invasive ventilation, earlier  
 348 transfer to critical care and dependent on emerging trial data, potentially those who are at low risk  
 349 of deterioration suitable for ambulant monitoring. Similarly, subject to future studies, biomarker  
 350 concentrations may have significant value in signalling patients suitable for earlier commencement  
 351 of targeted therapies, including antiviral treatments (e.g. remdesivir) or immunomodulation with  
 352 high dose steroids or interleukin-6 inhibitors (e.g. tocilizumab & sarilumab); in the NHS the latter are  
 353 subject in the UK to specific inclusion criteria which includes physiological derangement and  
 354 requirement for respiratory support.(19, 20)

355  
 356 Previous studies examining the clinical utility of MR-proADM have focussed on predicting adverse  
 357 events, primarily in patients with a diagnosis of community-acquired pneumonia and elevated MR-  
 358 proADM levels,(4) reflecting the development of organ dysfunction. However, these patients

359 typically have had low rates of severe viral infection.(11, 21) We have shown commensurate results  
360 in individuals diagnosed with SARS-CoV-2 infections. This may be explained by the development of  
361 endothelial dysfunction during SARS-CoV-2 infection, for which endoreticular stress and the  
362 activation of the unfolded protein response is a significant inducer. Endothelial dysfunction is  
363 associated with complications of Covid-19 including ARDS, thromboembolism and vascular disease,  
364 with Adrenomedullin known to be a regulator of vascular tone and the integrity and stability of the  
365 endothelial barrier.

366  
367 The early recognition of potential for deterioration in patients infected with SARS-CoV-2 is invariably  
368 challenging given the varied clinical course of the disease; particularly with the currently  
369 unpredictable potential for deterioration during the second and third weeks of disease. As such, a  
370 reliable indicator for early identification of patients at risk of deterioration or a more severe illness  
371 trajectory could be of great value, in allowing for earlier targeted intervention or escalation of  
372 treatment.

373  
374 The study has several limitations. Primarily, a higher event per variable ratio is desirable, fortunately  
375 however stratification was only needed for one covariate. Greater power could be achieved through  
376 higher participant numbers or through examining serial results over time. A multi-centre study with  
377 more patients could also allow for prediction of progression from NIV to intubation. It is a  
378 retrospective study; it remains to be seen whether application of such biomarkers into clinical  
379 diagnostic and management pathways will deliver the potential expected benefits. Clinician  
380 confidence in use of such biomarkers to support decisions has to be developed and evidenced in  
381 clinical practice.

382  
383 MR-proADM and CRP may have other clinical utility worth exploring, such as whether measurement  
384 of these has use in facilitating earlier discharges (11) in individuals with low concentrations or  
385 whether a delta change in concentrations could be used to guide decisions on weaning ventilatory  
386 support and also the de-escalation or stopping of antibiotics to mitigate against potential future  
387 antimicrobial resistance.

### 388 389 **Conclusions**

390 Biomarker measurement, in particular MR-proADM, in patients infected with SARS-CoV-2 upon  
391 presentation to secondary care shows significant promise in allowing early identification of those at  
392 increased risk of disease progression and mortality, possibly providing a tool to support clinical  
393 decisions regarding therapeutic interventions and level of care setting. Additionally, adopting use of  
394 biomarkers such as MR-proADM in the acute setting carries potential in allowing identification of  
395 those at low-risk for severe disease, facilitating discharge decisions. Further prospective, multi-  
396 centre studies are needed to investigate possible exciting clinical applications of this and other  
397 biomarkers.

398  
399  
400  
401  
402  
403

404 **Author Contributions** NAM, MY, KG and NC contributed to the study conception and design.  
405 Material preparation was performed by TL. Data collection was performed by RW, MM, BB, GV and  
406 JL. Analysis was performed by NAM and PP. The first draft of the manuscript was written by NAM.  
407 RW, SPK, CT, VGA, KS, KG and NC commented on previous versions of the manuscript. All authors  
408 read and approved the final manuscript.

409  
410 **Ethical approval** Local Hampshire Hospitals NHS Foundation Trust R&D approval was obtained. HRA  
411 Approval was sought who deemed an ethical review was not necessary. HRA Approval was  
412 subsequently granted for this project (IRAS project ID: 299130). Anonymised confidential patient  
413 information was used under the COVID-19 COPI notice issued by the UK Department of Health and  
414 Social Care

415  
416 **Conflicts of Interest** Thermofisher (UK) provided reagent for measurement of MR-proADM free of  
417 charge. PP received payment from Thermo Fisher (Germany), however this did not have any role in  
418 the collection, management, analysis, or interpretation of the data, in the preparation, review, or  
419 approval of the manuscript, or in the decision to submit the manuscript for publication. There are no  
420 non-financial interests.

421  
422  
423  
424  
425

- 426 1. Varga Z, Flammer AJ, Steiger P, Haberecker M, Andermatt R, Zinkernagel AS, et al.  
427 Endothelial cell infection and endotheliitis in COVID-19. *Lancet*. 2020;395(10234):1417-8.
- 428 2. Zuo Y, Yalavarthi S, Shi H, Gockman K, Zuo M, Madison JA, et al. Neutrophil extracellular  
429 traps in COVID-19. *JCI Insight*. 2020;5(11).
- 430 3. Gille J, Ostermann H, Dragu A, Sablotzki A. MR-proADM: A New Biomarker for Early  
431 Diagnosis of Sepsis in Burned Patients. *J Burn Care Res*. 2017;38(5):290-8.
- 432 4. Elke G, Bloos F, Wilson DC, Brunkhorst FM, Briegel J, Reinhart K, et al. The use of mid-  
433 regional proadrenomedullin to identify disease severity and treatment response to sepsis - a  
434 secondary analysis of a large randomised controlled trial. *Crit Care*. 2018;22(1):79.
- 435 5. Elke G, Bloos F, Wilson DC, Meybohm P, Group SCCT. Identification of developing multiple  
436 organ failure in sepsis patients with low or moderate SOFA scores. *Crit Care*. 2018;22(1):147.
- 437 6. Legramante JM, Mastropasqua M, Susi B, Porzio O, Mazza M, Miranda Agrippino G, et al.  
438 Prognostic performance of MR-pro-adrenomedullin in patients with community acquired pneumonia  
439 in the Emergency Department compared to clinical severity scores PSI and CURB. *PLoS One*.  
440 2017;12(11):e0187702.
- 441 7. Pereira JM, Azevedo A, Basílio C, Sousa-Dias C, Mergulhão P, Paiva JA. Mid-regional  
442 proadrenomedullin: An early marker of response in critically ill patients with severe community-  
443 acquired pneumonia? *Rev Port Pneumol (2006)*. 2016;22(6):308-14.
- 444 8. Stalenhoef JE, van Nieuwkoop C, Wilson DC, van der Starre WE, Delfos NM, Leyten EMS, et  
445 al. Biomarker guided triage can reduce hospitalization rate in community acquired febrile urinary  
446 tract infection. *J Infect*. 2018;77(1):18-24.
- 447 9. van der Starre WE, Zunder SM, Vollaard AM, van Nieuwkoop C, Stalenhoef JE, Delfos NM, et  
448 al. Prognostic value of pro-adrenomedullin, procalcitonin and C-reactive protein in predicting  
449 outcome of febrile urinary tract infection. *Clin Microbiol Infect*. 2014;20(10):1048-54.
- 450 10. von Haehling S, Filippatos GS, Papassotiriou J, Cicoira M, Jankowska EA, Doehner W, et al.  
451 Mid-regional pro-adrenomedullin as a novel predictor of mortality in patients with chronic heart  
452 failure. *Eur J Heart Fail*. 2010;12(5):484-91.

- 453 11. Saeed K, Wilson DC, Bloos F, Schuetz P, van der Does Y, Melander O, et al. The early  
454 identification of disease progression in patients with suspected infection presenting to the  
455 emergency department: a multi-centre derivation and validation study. *Crit Care*. 2019;23(1):40.  
456 12. Vittinghoff E, McCulloch CE. Relaxing the rule of ten events per variable in logistic and Cox  
457 regression. *Am J Epidemiol*. 2007;165(6):710-8.  
458 13. Riley RD, Snell KI, Ensor J, Burke DL, Harrell FE, Moons KG, et al. Minimum sample size for  
459 developing a multivariable prediction model: PART II - binary and time-to-event outcomes. *Stat Med*.  
460 2019;38(7):1276-96.  
461 14. Group RC. Azithromycin in patients admitted to hospital with COVID-19 (RECOVERY): a  
462 randomised, controlled, open-label, platform trial. *Lancet*. 2021;397(10274):605-12.  
463 15. Horby P, Mafham M, Linsell L, Bell JL, Staplin N, Emberson JR, et al. Effect of  
464 Hydroxychloroquine in Hospitalized Patients with Covid-19. *N Engl J Med*. 2020;383(21):2030-40.  
465 16. Group RC. Lopinavir-ritonavir in patients admitted to hospital with COVID-19 (RECOVERY): a  
466 randomised, controlled, open-label, platform trial. *Lancet*. 2020.  
467 17. Baldirà J, Ruiz-Rodríguez JC, Wilson DC, Ruiz-Sanmartin A, Cortes A, Chiscano L, et al.  
468 Biomarkers and clinical scores to aid the identification of disease severity and intensive care  
469 requirement following activation of an in-hospital sepsis code. *Ann Intensive Care*. 2020;10(1):7.  
470 18. Gonzalez Del Castillo J, Wilson DC, Clemente-Callejo C, Román F, Bardés-Robles I, Jiménez I,  
471 et al. Biomarkers and clinical scores to identify patient populations at risk of delayed antibiotic  
472 administration or intensive care admission. *Crit Care*. 2019;23(1):335.  
473 19. Improvement NEaN. Interim Clinical Commissioning Policy: Tocilizumab for critically ill  
474 patients with COVID-19 pneumonia (adults)  
475 [https://www.england.nhs.uk/coronavirus/publication/interim-clinical-commissioning-policy-](https://www.england.nhs.uk/coronavirus/publication/interim-clinical-commissioning-policy-tocilizumab-for-hospitalised-patients-patients-with-covid-19-pneumonia-adults/)  
476 [tocilizumab-for-hospitalised-patients-patients-with-covid-19-pneumonia-adults/](https://www.england.nhs.uk/coronavirus/publication/interim-clinical-commissioning-policy-tocilizumab-for-hospitalised-patients-patients-with-covid-19-pneumonia-adults/): NHS England and  
477 NHS Improvement; 2021 [  
478 20. Improvement NEaN. Interim Clinical Commissioning Policy: Sarilumab for critically ill patients  
479 with COVID-19 pneumonia (adults) [https://www.england.nhs.uk/coronavirus/publication/interim-](https://www.england.nhs.uk/coronavirus/publication/interim-clinical-commissioning-policy-sarilumab-for-critically-ill-patients-with-covid-19-pneumonia-adults/)  
480 [clinical-commissioning-policy-sarilumab-for-critically-ill-patients-with-covid-19-pneumonia-adults/](https://www.england.nhs.uk/coronavirus/publication/interim-clinical-commissioning-policy-sarilumab-for-critically-ill-patients-with-covid-19-pneumonia-adults/):  
481 NHS England and NHS Improvement; 2021 [  
482 21. Xie Z, Chen WS, Yin Y, Chan EC, Terai K, Long LM, et al. Adrenomedullin surges are linked to  
483 acute episodes of the systemic capillary leak syndrome (Clarkson disease). *J Leukoc Biol*.  
484 2018;103(4):749-59.  
485