

Title: Von Meyenburg Complexes and Malignancy: A Systematic Review

Abu Baker Sheikh¹, Anthony Nguyen², Abdul Ahad Ehsan Sheikh³, Nismat Javed⁴, Katarina Leyba⁵, Rahul Shekhar⁶

1. Resident Physician, University of New Mexico Health Sciences Center, Department of Internal Medicine, Albuquerque, NM, USA. Email: absheikh@salud.unm.edu.
2. Resident Physician, University of New Mexico Health Sciences Center, Department of Internal Medicine, Albuquerque, NM, USA. Email: apnguyen@salud.unm.edu.
3. Resident Physician, The Wright Center for Graduate Medical Education, Department of Internal Medicine, Scranton, PA, USA. Email: abdulahad.esn@gmail.com.
4. Shifa College of Medicine, Shifa Tameer-e-Millat University, Islamabad, Pakistan. Email: nismatjaved@gmail.com.
5. Medical Student, University of New Mexico, Department of Internal Medicine, Albuquerque, NM, USA. Email: katarinaleyba@gmail.com.
6. Assistant Professor, Division of Hospital Medicine, University of New Mexico School of Medicine, Department of Internal Medicine, Albuquerque, NM, USA. Email: rahul547843@gmail.com.

Corresponding Author:

Dr. Abu Baker Sheikh

MSC 10-5550, 1 University of New Mexico, Albuquerque, NM 87131

Contact: 631-633-4125, Email: absheikh@salud.unm.edu.

Word count for abstract: 192 words, **for main text:** 2501 words

ABSTRACT:

Von Meyenburg Complexes (VMC) are benign lesions secondary to ductal plate malformations. These are relatively rare in adults and are often asymptomatic, with many lesions being diagnosed on imaging. Despite these benign characteristics, VMC have the potential to undergo malignant changes leading to conditions such as cholangiocarcinoma and other cancers. The objective of the review is to report and analyze the cases of biliary hamartomas which were associated with malignancy. We performed a structured systematic review of literature and identified 31 cases of biliary duct hamartomas associated with malignancy. The mean age at onset was 61 years \pm 13 (min 19 to max 88) with the majority of the patients being male (64.5%). Of all cases, 41.9% reported symptoms (13/31 cases) with the most common symptom being abdominal pain (32.3%). Biopsies reported malignancy in 77.4% of cases (24/31 cases) with the most common reported associated malignancy being cholangiocarcinoma 54.8% (17/31). 93.3% of the cases underwent surgical intervention (28/30 cases). VMC are an important entity with malignancy potential which is under-reported. Presence of ‘red flag’ symptoms such as weight loss and obstructive jaundice in patients with diagnosed biliary hamartomas should prompt an evaluation for malignancy.

Key-words: Von meyenburg complexes; cholangiocarcinoma; malignancy; biliary hamartomas

INTRODUCTION:

Biliary Hamartomas, also referred to as Von Meyenburg Complexes (VMC), are hepatic tumor like lesions that form as a result of ductal plate malformations. VMCs have an incidence of approximately 5.6% in adults [1], are often subclinical and are most often found incidentally on abdominal CT or MRI. Histologically, they are characterized by dilated and irregularly formed bile ducts with bland cuboidal epithelium. Although most often asymptomatic, the clinical relevance of VMCs lie in their potential to transform into more malignant pathologies such as intrahepatic cholangiocarcinoma (ICC) and less often, hepatocellular carcinoma (HCC). There have been numerous case reports of VMCs with subsequent transformation into ICC or HCC however the actual rate of transformation into malignancy and its type is unclear at this time. This is a systematic review that compiles 31 cases of biliary hamartomas with associated malignancy dating back to 1975.

METHODS

Protocol development and systematic review registration

We developed the protocol for this review after consensus with all the reviewers and subject experts. After protocol preparation, data search was done. We kept our data search broad.

Search strategy

Keywords (including all commonly used abbreviations of these terms) used in the search strategy were as follows: "Biliary hamartomas" OR "Von Meyenburg Complexes" OR "Biliary duct hamartomas" OR "Hamartomas AND biliary " OR "Multiple biliary hamartomas" OR "Multiple biliary duct hamartomas".

Data extraction (selection and coding)

We screened PubMed, Web of Science and CINAHL databases and articles published in the English language were included in the systemic review. On the initial search, 163 articles on PubMed, 33 on Web of Science (excluding Medline) and 63 on CINAHL (excluding Medline) were included. After the initial search, duplicates were removed and we imported all included search study into EndNote online software. Two independent reviewers screened remaining studies for the inclusion based on inclusion criteria, and researchers were blinded to each other's decisions. Rayyan software and Mendeley desktop were used. Once the initial screening is done, two independent reviewers reviewed the full-text article for final inclusion. Reviewers were blinded to each other's decisions, and a third reviewer resolved any dispute.

Data was extracted from study documents, including information about study design and methodology, participant demographics and baseline characteristics, publication journal, clinical presentation, symptoms, laboratory data, imaging data, intervention, treatment, clinical outcomes, morbidity and mortality.

One reviewer did data extraction, and another reviewer cross-checked the extracted data for accuracy and completeness. Publications that were not peer-reviewed were excluded from this study. The preliminary data was entered and recorded in an excel spreadsheet. The final analysis included 31 studies (figure 1).

Strategy for data synthesis

For statistical analysis, we used IBM SPSS Statistics version 21 (IBM, Armonk, NY, USA). Based on the distribution of values, continuous data were expressed as mean \pm standard deviation. Qualitative variables were expressed as frequency and percentages.

CURRENT STATE OF KNOWLEDGE:

Our literature search identified 21 articles including 16 case reports and 5 case series covering a total of 31 cases of biliary hamartoma. All data concerning the demographics, clinical course and outcomes of these cases is shown in Table 1 [2-22].

Epidemiology:

Cases included in this study covered a wide time period with the earliest case occurring in 1994. The mean age at onset was approximately 61 years \pm 13 (min 19 to max 88). In regards to gender, cases were predominantly in male patients who made up 64.5% of the case population compared to 35.5% for females. Comorbidities were variably included in case descriptions with 54.8% of cases

reporting comorbidities (17/31 cases). Of the comorbidities noted, there was no disproportionately high prevalence of one specific disease, although the most commonly reported were hypertension (22.6%), hepatitis C (16.1%) and alcohol use disorder (16.1%).

Structural disease:

There were six patients (19.4%) who had some form of previously diagnosed structural hepatobiliary disease. These diseases included fibrocystic liver disease (1/6 cases), polycystic liver and kidney disease (1/6 cases), biliary duct adenoma (1/6 cases), Caroli's disease (1/6 cases), hemochromatosis (1/6 cases) and biliary adenofibroma (1/6 cases). The malignancies found in these specific cases included hepatocellular carcinoma (2/6 cases), hepatocellular carcinoma and cholangiocarcinoma (1/6 cases) and intrahepatic cholangiocarcinoma (1/6 cases).

Clinical Picture:

Of all reported cases, 41.9% reported symptoms (13/31 cases) with the most common symptom being abdominal pain (32.3%). All other reported symptoms which included weight loss, jaundice, fever, abdominal distension and upper GI bleed occurred in less than 10% of cases.

Biochemical/Imaging Findings/Pathology:

Of the 31 cases, biochemical data was reported in 21. Aspartate aminotransferase (AST) and alanine aminotransferase (ALT) were elevated in 19.4% of cases (6/21 cases). Alkaline phosphatase and GGT elevations occurred in 29.0% of cases (9/21 cases) and total bilirubin was elevated in 12.9% of cases (4/21 cases). Imaging modalities occurred variably with ultrasound being conducted in 12

cases, CT in 17 cases and MRI in 12 cases. Ultrasound findings were minimally reported in regards to echogenicity. Lesions were reported as hypointense on CT in 29% of cases (10/17). On MRI, lesions were reported as hypointense on T1-weighted MRI 29.0% of the time (vs hyperintense in 3.2%) and hypointense 9.7% of the time on T2-weight MRI (vs hyperintense 19.4% of the time). The size of the tumor was reported in 17 cases and was larger than 1 cm in 16/17 cases. The location of the lesion was reported in 25 cases and was most often found in the right liver lobe (35.5%) vs. the left liver lobe which occurred in 9.7% of cases. A specific liver segment was reported in the remaining 35.5% of cases. Biopsies were consistent with malignancy in 77.4% of cases (24/31 cases) and were reported as partially malignant with histology consistent with Von Meyenburg complexes in the remaining 22.6%. Most common reported associated malignancy was cholangiocarcinoma 54.8% (17/31), followed by hepatocellular carcinoma 29.0% (10/31), 2/31 cases were consistent with malignant colon cancer. 1 case had underlying hepatocellular and concomitant cholangiocarcinoma and 1 case had underlying biliary adenofibroma.

Management/Outcomes:

Management of the biliary hamartomas and associated malignancy was reported in 30 cases, 93.3% of which resulted in surgical intervention (28/30 cases). The patient died in the remaining 2 cases prior to surgical intervention. Outcomes were reported in 29 cases and 22.6% of patients died while the remaining 77.5% were alive or the outcome was unknown.

DISCUSSION:

Biliary duct hamartomas (BDH) also known as “von Meyenburg complexes” were first reported in 1918 [23]. These are small bile duct lesions, most often benign in nature, that are believed to be caused by abnormal embryologic development of the ductal plates [24]. The lesions are often bile-filled and are found in both non-cirrhotic and cirrhotic livers [25]. Biliary duct hamartomas were originally reported in only 0.6 to 0.7% of surgical and autopsy liver specimens [26]. However a more accurate incidence of approximately 5.6% in adults and 0.9 % in children was reported by Redston in a study of 2843 autopsies [1]. On gross examination and imaging, BDH are frequently mistaken for metastatic tumors.

The risk of developing neoplasia in association with BDH appears to be small and the exact incidence is not known. Most of the reported cases with BDH malignant transformation are diagnosed in resected liver specimens or at autopsy. We suspect the incidence of malignancy and carcinoma associated with BDH may be higher and our systematic review is aimed at identifying the lab work, imaging findings, and common clinical characteristics including appearance, size, and location of the lesions that are possibly related to malignancy.

The direct relation between BDH and malignancy has been rarely observed in the literature. Our study covered 31 cases from 21 articles dating back to 1975 which showed BDH cases leading into a potential malignant transformation. BDH transforming into a malignant lesion is not a well-known hypothesis. The increased risk has been attributed to bile stasis and the subsequent interaction of the possible carcinogens present in bile with the parenchyma. The gradual transition from BDH to hyperplastic or adenomatous lesions and then cholangiocarcinoma has been reported [18] (Figure 2, 3). It has been postulated that bile exposure time is directly

proportional to the risk of developing malignancy and therefore the chance of BDH converting into malignancy can be higher than other biliary lesions [18, 27, 28]. Supporting the premise, our review showed that the mean age at onset was 61 years.

Our study showed a male predominance with 64.5% cases found in males. The gender patterns have shown to be varied by different sites in the hepatobiliary system. Gallbladder cancer is seen more in females and extrahepatic bile duct and ampulla of Vater cancers noted more in males corresponding to our findings [29].

As discussed earlier BDH and malignancy are rare and biliary hamartomas are mostly incidental findings at laparotomy and autopsy [24]. In our review, we made an attempt to find relations with BDH and different malignancies. The most common malignant tumors noted in the background of BDH are cholangiocarcinoma (CC), 17/31 cases, as reflected in our table followed by Hepatocellular carcinoma, 10/31. Histological review done by at least one of the studies revealed strong evidence of the evolution of BDH to CC through an intermediate stage of hyperplasia or adenomatous transformation and carcinoma-in-situ [18]. This is consistent with the current concept of a hyperplasia, dysplasia, neoplasia sequence seen in cholangiocarcinoma [30]. However, one study reported the prevalence of BDH as 5.6% in adults and suggested that combined with the lower number of cases, it should be assumed that both conditions may occur as a coincidence and not as a potential sequela [31].

HCC has also been observed in conjunction with BDH. Kim et al [13], reported a case with both HCC and CC in the presence of underlying BDH. In that study, no evidence was found of direct contact or histologic transition between HCC and CC, and only the CC had a transition area from the BDH as discussed above. Similarly in our review, all but 3 cases of HCC were associated with either viral illness, underlying cirrhosis, alcohol use, or concomitant CC. Perhaps it can be argued that these associations were the causative

agents for HCC and BDH were just an incidental finding but the 3 cases reported by Heinke, and Lin make room for the debate as there were no precancerous factors associated with any of these cases [4, 22].

A few structural liver diseases also increase the risk of developing subsequent malignancies. This includes hemochromatosis. In a study conducted in 2011, 18.4% of the patients who had intrahepatic cholangiocarcinoma also had genetic hemochromatosis [32]. A similar finding was seen in a case report of a patient with polycystic liver and kidney disease [33]. Caroli's disease is another structural problem that might increase the predisposition to developing malignancy [34]. Although, biliary duct hamartomas are a rare entity, it might be possible that another structural disease can increase the chances of developing dysplasia in a few benign lesions.

In regards to clinical presentation, there were no clear clinical or biochemical findings that were present in a high proportion of cases that could be used as a predictor of disease onset. The most frequently reported symptom in this case series was abdominal pain (32.3% of cases), which is relatively non-specific. Laboratory abnormalities were also relatively non-specific as lab patterns consistent with cholestasis were only reported in 29.4% of cases.

Imaging findings were consistent with what is currently known about the radiographic characteristics of biliary hamartomas which is that they are typically 5-15mm, homogeneous lesions that appear hypointense on CT and T1-weighted MRI and hyperintense on T2-weighted MRI. Given the indolent, subclinical presentation of BDH, patients were generally not intervened upon until later in the disease course where surgical resection was often required.

There is variation in the sizes of these lesions on biopsy. According to one study, biliary duct hamartomas are about 0.2 cm in size, ranging from 0.1 to 0.4 cm whereas well-differentiated cholangiocarcinoma varies from 0.9 to 9.0 cm (mean: 4.3 cm) and moderate to

poorly differentiated cholangiocarcinoma varies from 0.9 to 9.8 cm in terms of size [35]. The difference in sizes of biliary duct hamartomas and well-differentiated cholangiocarcinoma were significant implying that the size of the lesions might help to determine suspicion of malignancy. In our study, the majority of the malignant lesions were greater than 1 cm in size except for one lesion that was malignant despite being smaller than 1 cm suggesting that this discrepancy in size is an important factor. Although literature reports intrahepatic location (10.0%) of cholangiocarcinoma to be less frequent than the other locations [36], our study found that the majority (80.7%) of the suspicious lesions were located either in liver lobes or liver segments.

This case series has several limitations. The first being that it is retrospective, which limits the data available for analysis, as many of the cases did not report data such as lab findings and imaging. Case series are also subject to selection bias, as the studies included in the series are selected by individual researchers. Another limitation is the wide period of time between the earliest and the most recent study. As the earliest case was reported in the 1990s, imaging study selection would certainly be different between cases because MRIs would not be as commonly used in the early 1990s as compared to more recent cases. Perhaps the most important limitation is that there is limited data in the studies for immunohistochemistry results that could suggest or explain if cholangiocarcinoma may indeed occur in a pre-existing BDH.

In patients with either stable lesions or suspicion of biliary hamartomas, increasing symptoms, like worsening abdominal pain, weight loss, increase in size of lesions and obstructive jaundice would need further evaluation with possible biopsy to rule out underlying malignancy. Biliary hamartoma transformation to malignancy is under-reported but prevalence is still very low and in case of stable lesions, regular surveillance with imaging is not recommended and would not be a cost-effective approach.

CONCLUSION:

VMCs are an important entity when the question of malignancy potential comes into consideration. Patients with structural hepatobiliary diseases, chronic hepatitis, drug use and progressive symptoms might have an underlying hepatobiliary malignancy developing. This possibility of malignancy must be considered as a potential differential diagnosis when evaluating patients with worsening symptoms such as weight loss or increase in size of lesion. Regular surveillance is not recommended in patients with stable biliary hamartomas.

What is known about this topic:

- Biliary duct hamartomas are benign lesions usually found in surgical and autopsy liver specimens.

What this study adds:

- Patients with structural hepatobiliary disease or red flag symptoms such as weight loss, increase in size of lesion and obstructive jaundice should be evaluated for underlying malignant transformations.
- Biliary duct hamartomas are an important entity with malignancy potential which is under-reported.
- Regular surveillance is not recommended and not cost-effective in patients with stable lesions.

Competing Interests:

The authors have no competing interests to declare.

Author Contributions:

A.S. conceived the idea and contributed to the manuscript draft; A.N. contributed to the literature search; N.J. contributed to the data analysis; A.S., A.N., A.E.S., N.J., and K.L. wrote parts of the manuscript; A.S., provided the pathology slides; R.S. contributed to the supervision (attending), resources and critical review of the manuscript. All the authors have read and agreed to the final manuscript.

Acknowledgements

The authors have no acknowledgments to declare.

REFERENCES:

1. Redston MS, Wanless IR. The hepatic von Meyenburg complex: prevalence and association with hepatic and renal cysts among 2843 autopsies. *Mod Pathol*. 1996; 9(3):233–237.
2. Xu AM, Xian ZH, Zhang SH, Chen XF. Intrahepatic cholangiocarcinoma arising in multiple bile duct hamartomas: report of two cases and review of the literature. *Eur J Gastroenterol Hepatol*. 2009; 21(5):580-584.
3. Wałędziak M, Różańska-Wałędziak A, Kowalewski PK, Paśnik K. Intrahepatic cholangiocarcinoma in an obese patient qualified for laparoscopic bariatric surgery - a case study. *Wideochir Inne Tech Maloinwazyjne*. 2018; 13(2):257-259.
4. Heinke T, Pellacani LB, Costa Hde O, Fuziy RA, Franco M. Hepatocellular carcinoma in association with bile duct hamartomas: report on 2 cases and review of the literature. *Ann Diag Pathol*. 2008; 12(3):208-211.
5. Jain D, Nayak NC, Saigal S. Hepatocellular carcinoma arising in association with von-Meyenburg's complexes: an incidental finding or precursor lesions? A clinicopathologic study of 4 cases. *Ann Diagn Pathol*. 2010; 14(5):317-320.
6. Song JS, Lee YJ, Kim KW, Huh J, Jang SJ, Yu E. Cholangiocarcinoma arising in von Meyenburg complexes: report of four cases. *Pathol Int*. 2008; 58(8):503-512.

7. Sugawara T, Shindoh J, Hoshi D, Hashimoto M. Intrahepatic cholangiocarcinoma and portal hypertension developing in a patient with multicystic biliary microhamartomas. *Malays J Pathol.* 2018; 40(3):331-335.
8. Hasebe T, Sakamoto M, Mukai K, Kawano N, Konishi M, Ryu M, et al. Cholangiocarcinoma arising in bile duct adenoma with focal area of bile duct hamartoma. *Virchows Arch.* 1995; 426(2):209-213. doi: 10.1007/BF00192644.
9. Neto AG, Dainiak C, Qin L, Salem RR, Jain D. Intraductal papillary cholangiocarcinoma associated with von Meyenberg complexes: a case report. *Dig Dis Sci.* 2007; 52(10):2643-2645.
10. Kim YW, Park YK, Park JH, Lee J, Lee SM, Hong SW, et al. A case with intrahepatic double cancer: hepatocellular carcinoma and cholangiocarcinoma associated with multiple von Meyenburg complexes. *Yonsei Med J.* 1999; 40(5): 506-509.
11. Röcken C, Pross M, Brucks U, Ridwelski K, Roessner A. Cholangiocarcinoma occurring in a liver with multiple bile duct hamartomas (von Meyenburg complexes). *Arch Pathol Lab Med.* 2000; 124(11):1704-1706.
12. Blanc JF, Bernard PH, Carles J, Le Bail B, Balabaud C, Bioulac-Sage P. Cholangiocarcinoma arising in Von Meyenburg complex associated with hepatocellular carcinoma in genetic haemochromatosis. *Eur J Gastroenterol Hepatol.* 2000; 12(2):233-237.
13. Kim HK, Jin SY. Cholangiocarcinoma arising in von Meyenburg complexes. *Korean J Hepatol.* 2011; 17(2):161-164.
14. Li WH, Tsang YW, Cheung MT. Cholangiocarcinoma arising from bile duct hamartoma. *Surg Pract.* 2009; 13(3): 83-85.

15. Parekh V, Reddy S, Peker D. Histologic Glimpse to Cholangiocarcinoma Arising in Von-Meyenburg Complexes: Report of a Rare Case. *Am J Clin Pathol*. 2013; 140 (Suppl 1): A107.
16. Pinho AC, Melo RB, Oliveira M, Almeida M, Lopes J, Graça L, et al. Adenoma-carcinoma sequence in intrahepatic cholangiocarcinoma. *Int J Surg Case Rep*. 2012; 3(4):131-133.
17. Zimpfer A, Nebel B, Terracciano L, Koch H. Intrahepatic cholangiocellular carcinoma associated with von Meyenburg complexes: case report and review of literature. *Diagn Pathol*. 2007; 2: S10.
18. Jain D, Sarode VR, Abdul-Karim FW, Homer R, Robert ME. Evidence for the neoplastic transformation of Von-Meyenburg complexes. *Am J Surg Pathol*. 2000; 24(8):1131-1139.
19. Beard RE, Yee EU, Morteale KJ, Khwaja K. Multicystic biliary hamartoma: A report of a rare entity and a review of the literature. *Int J Surg Case Rep*. 2014; 5(12):919-923.
20. Gupta A, Pattnaik B, Das A, Kaman L. Von Meyenburg complex and complete ductal plate malformation along with Klatskin tumour: a rare association. *BMJ Case Rep*. 2016; 2016:10.1136/bcr-2016-215220.
21. Jang MH, Lee YJ, Kim H. Intrahepatic cholangiocarcinoma arising in Caroli's disease. *Clin Mol Hepatol*. 2014; 20(4):402-405.

22. Lin S, Shang TY, Wang MF, Lin J, Ye XJ, Zeng DW, et al. Polycystic kidney and hepatic disease 1 gene mutations in von Meyenburg complexes: Case report. *World J Clin Cases*. 2018; 6(9):296-300.
23. von Meyenburg H. Uber die Cystenleber . *Beitr Pathol Anat*. 1918; 64:477–532. In German.
24. Desmet VJ. Congenital diseases of intrahepatic bile ducts: variations on the theme ‘ductal plate malformation’. *Hepatology*. 1992; 16(4):1069–1083.
25. Torbenson MS. Hamartomas and malformations of the liver. *Semin Diagn Pathol*. 2019; 36(1):39-47.
26. Thommesen N. Biliary hamartomas (Von Meyenburg complexes) in liver needle biopsies. *Acta Pathol Microbiol Scand A*. 1978; 86(2):93–99.
27. Dekker A, Ten Kate FJW, Terpstra OT. Cholangiocarcinoma associated with multiple bile duct hamartomas of the liver. *Dig Dis Sci*. 1989; 34(6):952–958.
28. Scott J, Shousha S, Thomas HC, Sherlock S. Bile duct carcinoma: a late complication of congenital hepatic fibrosis. *Am J Gastroenterol*. 1980; 73(2):113–119.
29. Castro FA, Koshiol J, Hsing AW, Devesa SS. Biliary tract cancer incidence in the United States-Demographic and temporal variations by anatomic site. *Int J Cancer*. 2013; 133(7):1664-1671.
30. Anthony PP. Pathology of the Liver-3rd edition. 1994. New York. Churchill Livingstone.

31. Kendall T, Verheij J, Gaudio E, Evert M, Guido M, Goepfert B, et al. Anatomical, histomorphological and molecular classification of cholangiocarcinoma. *Liver Int.* 2019; 39 Suppl 1:7-18.
32. Sulpice L, Rayar M, Boucher E, Pele F, Pracht M, Meunier B. Intrahepatic cholangiocarcinoma: impact of genetic hemochromatosis on outcome and overall survival after surgical resection. *J Surg Res.* 2013; 180(1):56-61.
33. Sasaki M, Katayanagi K, Watanabe K, Takasawa K, Nakanuma Y. Intrahepatic cholangiocarcinoma arising in autosomal dominant polycystic kidney disease. *Virchows Arch.* 2002; 441(1):98-100.
34. Kasper HU, Stippel DL, Töx U, Drebber U, Dienes HP. Primäres Cholangiokarzinom auf dem Boden einer Caroli-Erkrankung. Fallbericht und Literaturübersicht [Primary cholangiocarcinoma in a case of Caroli's disease: case report and literature review]. *Pathologe.* 2006; 27(4):300-304. In German.
35. Tsokos CG, Krings G, Yilmaz F, Ferrell LD, Gill RM. Proliferative index facilitates distinction between benign biliary lesions and intrahepatic cholangiocarcinoma. *Hum Pathol.* 2016; 57:61-67.
36. Razumilava N, Gores GJ. Cholangiocarcinoma. *Lancet.* 2014; 383 (9935):2168-2179.

Figure Legends

Figure 1: PRISMA diagram

Figure 2: Liver parenchyma showing a well-demarcated lesion with numerous small to medium sized, irregularly shaped, angulated and dilated glands with intervening fibrous stroma consistent with biliary duct hamartomas. (H&E, x10)

Figure 3: Well-differentiated irregular ductular to cribriform glands in a prominent fibrous stroma. The nuclei show mild to moderate atypia, are hyperchromatic and pleomorphic with nucleoli consistent with cholangiocarcinoma. (H&E, 40X)

Table legends:

Table 1: Summary of all the articles reviewed.

Study	Age	Sex	Clinical Picture		Comorbidities	Labs			Imaging			Pathology	Diagnosis	Outcome
			Symptoms	Physical Exam		AFP	CEA	CA19-9	Alkaline	AST/ALT	Total			

Table 1: Summary of all the articles reviewed.

Author	Age	Sex	Symptoms	RUQ	No structural disease	Normal	Elevated	Elevated	Phosphatase		Bilirubin		8cm R liver lobe tumor	8cm R liver lobe tumor	Multiple dot-like hypodensities	Segment	8cm diameter tumor with areas of dysplastic ductal cells consistent with adenocarcinoma w/ transition from mild dysplasia to invasive, inflammatory infiltrates and lymph follicles within connective tissue and necrosis present	Intrahepatic Cholangiocarcinoma (ICC)	R hemihepatectomy performed, patient died 1 year later from recurrent disease
									Elevated	N/A	N/A	N/A							
Xu, 2009 ²	65	F	Severe, colicky RUQ pain, 10Kg weight loss over 10 weeks	N/A	N/A No structural disease	Normal	Elevated	Elevated	Elevated	N/A	N/A	8cm R liver lobe tumor	8cm R liver lobe tumor	Multiple dot-like hypodensities	6/7 (R liver lobe)	8cm diameter tumor with areas of dysplastic ductal cells consistent with adenocarcinoma w/ transition from mild dysplasia to invasive, inflammatory infiltrates and lymph follicles within connective tissue and necrosis present	Intrahepatic Cholangiocarcinoma (ICC)	R hemihepatectomy performed, patient died 1 year later from recurrent disease	
	88	M	Epigastric pain, weight loss	RUQ tenderness, (+) Murphy's sign	N/A No structural disease	N/A	N/A	N/A	N/A	ALT elevated	N/A	4cm R liver lobe tumor	4cm R liver lobe tumor	4cm R liver lobe tumor	6/7 (R liver lobe)	4.5cm diameter tumor w/ cavitating lesions and otherwise similar findings to case above (Case 2)	Intrahepatic Cholangiocarcinoma (ICC)	Laparotomy w/ excision, patient died 7 months later from recurrent disease	
Waledziak, 2018 ³	58	M	None	N/A	Obesity (BMI 44), Tobacco use, HTN, HLD, T2DM, OSA, Afib No structural disease	N/A	N/A	N/A	N/A	N/A	N/A	No liver lesions or abnormalities	No evidence of metastasis	N/A	2	Initial resected tumor: Low-grade ICC w/o vascular invasion, CK7+, CK19+, CK20-, p53+, PAs-, CK20-. Subsequent R hepatectomy: focal bile duct hamartoma w/o signs of malignancy	Low-grade Intrahepatic Cholangiocarcinoma	Started Roux-N-Y gastric bypass, a borted after finding 10cm tumor, resected tumor, patient still alive 5 months post-op.	
Heinke, 2008 ⁴	19	F	Abdominal distension for 1 year, jaundice, cholelithiasis and cachexia	N/A	N/A No structural disease	N/A	N/A	N/A	N/A	N/A	N/A	N/A	N/A	N/A	6/7 (R liver lobe)	Solid-tubercular, well-differentiated pattern with polygonal cells, vesicular nuclei, prominent nucleoli features of hepatocellular carcinoma, irregular dilated bile ducts w/ fibrous stroma consistent with bile duct hamartomas	HCC, underlying von-Meyenburg complexes	Patient died of hepatic failure shortly after presentation, pathologic findings were from autopsy.	
	39	M	Asymptomatic	N/A	N/A No structural disease	N/A	N/A	N/A	N/A	N/A	N/A	N/A	N/A	N/A	N/A	3.2cm tumor, white-yellow w/ central fibrosis consistent with hepatocellular carcinoma and biliary hamartomas w/ multiple VMGs	HCC w/ VMGs	Patient underwent hepatectomy without mention of long term outcome	
Jain, 2010 ⁵	55	M	Abdominal pain, diarrhea, fever, BRBPR for 6 months	N/A	N/A No structural disease	N/A	N/A	N/A	N/A	N/A	N/A	N/A	N/A	N/A	R lobe	Nodular liver, 1.4kg, HCC, surrounded by numerous proliferating dilated bile ductules consistent with vMC. Lining epithelium were flattened and attenuated to simple cuboidal type.	HCV-related ESLD (HCC with VMC)	Transplanted for ESLD	
	59	M	N/A	N/A	N/A No structural disease	N/A	N/A	N/A	N/A	N/A	N/A	N/A	N/A	N/A	R lobe	Nodular liver, 1.02kg liver, HCC in largest nodule surrounded by dilated bile ducts consistent with vMC	HCV-related ESLD (HCC with VMC)	Transplanted for ESLD	
	60	M	Abdominal Distension, UGIB	N/A	ETOH Use Disorder No structural disease	N/A	N/A	N/A	N/A	N/A	N/A	CLD, Portal HTN, Ascites	N/A	N/A	R lobe	HCC in largest nodule surrounded by dilated bile ducts consistent with vMC	ETOH-related CLD (HCC with VMC)	Living donor transplant for ETOH Cirrhosis	
	56	M	N/A	N/A	N/A No structural disease	N/A	N/A	N/A	N/A	N/A	N/A	N/A	N/A	N/A	R lobe	HCC in largest nodule surrounded by dilated bile ducts consistent with vMC	Cryptogenic cirrhosis (HCC with VMC)	LDLT for cryptogenic cirrhosis	
Song, 2008 ⁶	69	M	N/A	Normal	HBV-associated CLD, DM, BPH No structural disease	Normal	Normal	N/A	N/A	N/A	N/A=	N/A	N/A	Well-circumscribed 4cm-sized mass in left liver w/ low signal intensity in T1-weighted imaging.	L lobe	Tumor composed of benign VMC/BDH characterized by irregular and dilated ducts w/o luminal bile w/ multiple foci of adenocarcinoma consisting of infiltrative and dysplastic glandular/solid	Metastatic Colon cancer	Low anterior resection of the large intestine and lateral segmentectomy of the liver w/ adjuvant chemotherapy. 2 years later, f/u CT showed	

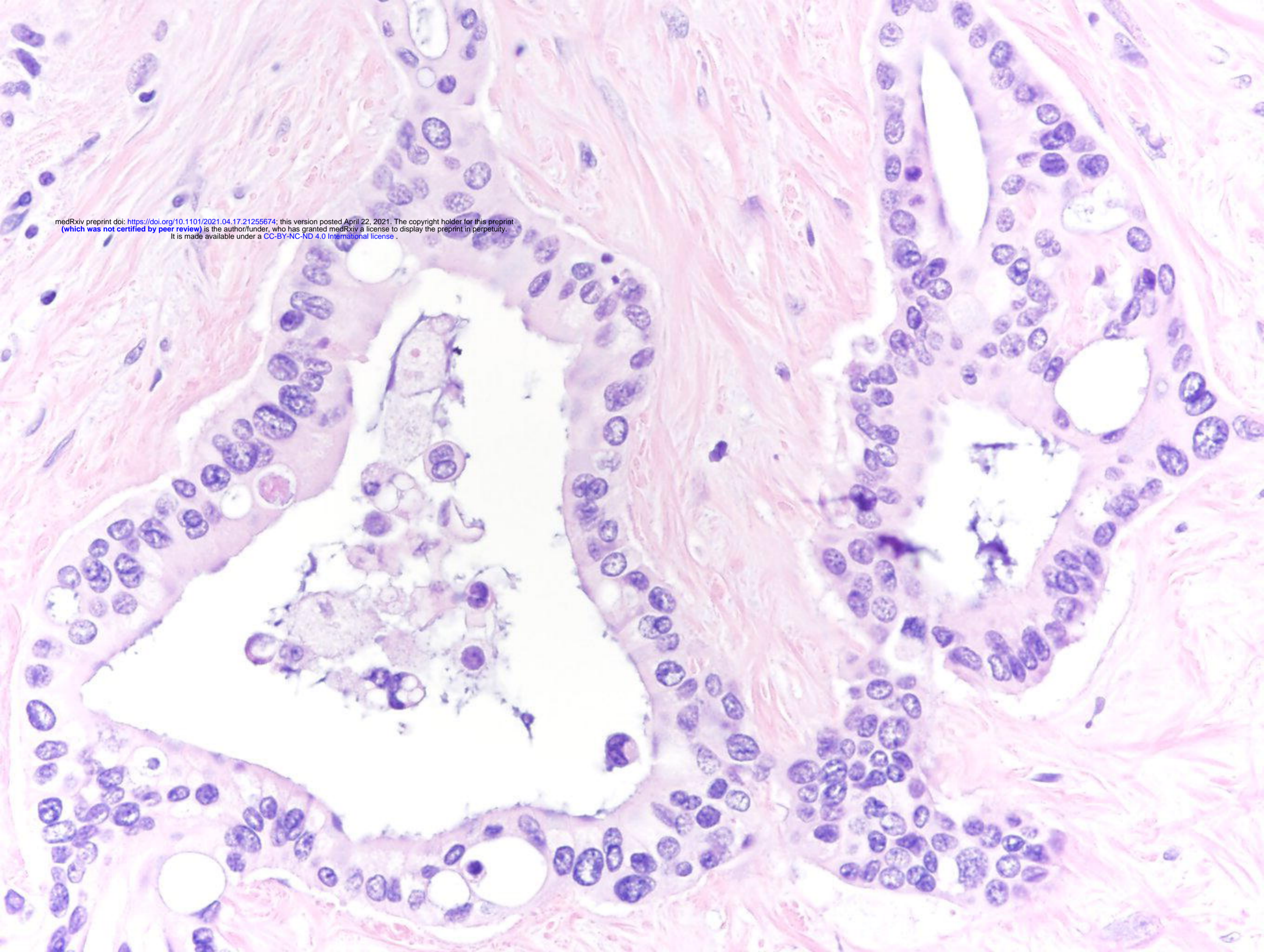
															structures. Dysplasia shown as pseudostatification comprising cells w/ enlarged and variably sized nuclei and some apical snouts.	metastatic lesions in mesentery and omentum. Palliative ileostomy performed, patient died from disease 3 months later.		
59	M	N/A	N/A	TB (40 years prior), HTN, aortic aneurysm, polymyalgia rheumatica No structural disease	Normal	Normal	N/A	N/A	N/A	N/A	N/A	3 cm-sized ill-defined enhancing mass in R posterior segment of the liver	N/A	N/A	Similar findings to patient 1 in Song (2008) study	Metastatic Colon cancer	Given suspicion for metastatic colon cancer, patient underwent R. hemicolectomy and segmentectomy of the liver. No evidence of liver or colon tumors at 3 years post-op.	
68	M	2.5kg weight loss over 2 weeks	Normal	ETOH Use Disorder Fibrocystic liver disease (6 years ago)	Normal	N/A	Normal	N/A	N/A	N/A	N/A	Cystic tumor measuring 10cm at the largest w/ several smaller 4cm lesions throughout the liver	N/A	R liver lobe	[Needle biopsy], fibrocystic liver disease + similar findings to patient 1 in Song 2008 study	Presumed "unusual type of HCC or hemangioma	R liver lobectomy performed, patient had no further evidence of tumor	
75	M	N/A	Normal	HCV-associated CLD, cardiomegaly, HTN, ETOH abuse No structural disease	Elevated	N/A	Normal	N/A	Normal	N/A	N/A	4.5cm hypovascular/lobulated hepatic mass in R liver lobe	N/A	R liver lobe	Similar findings to patient 1 in Song (2008) study	Hepatic adenocarcinoma (per biopsy)	R partial hepatectomy, patient had no further evidence of tumor	
Sugawara, 2018 ⁷	55	M	Fever	N/A	None Liver abscesses that did not resolve	Normal	Normal	Elevated	N/A	N/A	N/A	Obscure lesion w/ unclear enhancement	Abdominal MRI showed multiple tiny space-occupying lesions (hypointense on T1, hyperintense on T2)	8	Findings compatible with ICC w/ diffuse microhamatomas and dilated/irregular hyperplastic bile ducts	Cholangiocarcinoma w/ concurrent VMC	Initially thought to be abscess, but failed abx course, then found to have ICC w/ segment 8 liver resection	
Hasebe, 1994 ¹	59	M	N/A	N/A	Sigmoid cancer s/p resectosigmoidectomy No structural liver disease	N/A	Elevated	N/A	N/A	Normal	N/A	Tumors in Segment 2 and 4	Tumors in Segment 2 and 4	N/A	2,4	(tumor in S4):bile ducts w/ variable stroma compatible with bile duct adenoma (BDA) and atypical ductules growing into the liver parenchyma, coarsely granular/hyperchromatic large nuclei, (tumor in S2): metastatic adenocarcinoma from sigmoid colon	Bile duct adenocarcinoma w/ focal area of bile duct hamatoma	Patient underwent partial resection of S2 and S4, recovered w/ complications and CEA decreased to a normal level. Patient was alive 19 months after surgery
Neto, 2006 ¹	70	F	Severe colicky RUQ pain for 3 weeks, nausea	Non-distended abdomen, RUQ tenderness, decreased bowel sounds, positive Murphy's sign	hypothyroidism, osteoporosis, spontaneous pneumothorax requiring pleurodesis, remote tobacco use No structural liver disease	N/A	N/A	N/A	Elevated	Elevated	N/A	mildly distended gallbladder w/o wall thickening or pericholecystic fluid	N/A	MRCP (small filling defect in the common bile duct suspicious for cholelithiasis, ERCP showed no intraductal abnormality, MRI showed well circumscribed mass within segments 2 and 3 of the Lobe	2,3	tumor within lumen of the bile duct without invasion into liver parenchyma,	Intraductal Papillary cholangiocarcinoma	Underwent left liver lobe resection
Kim, 1999 ¹¹	74	M	Asymptomatic	Normal	HTN, aorto-bifemoral bypass graft (for atherosclerosis) No structural disease	Normal	Normal	Normal	Elevated	N/A	N/A	2 relatively well-defined round masses on the R lobe of the liver	2 relatively well-defined round masses on the R lobe of the liver	Right	well differentiated HCC composed of proliferating bile ductules with foci of dysplastic epithelium along the dilated bile ducts, multiple foci of VMCs scattered throughout tumor.	HCC	anterior bi-segmentectomy performed given concern for double HCC, HCC diagnosed w/ scapular metastases 2 years after initial liver resection, underwent	

																		scapulectomy without evidence of recurrence 6 months later.
Rocken, 2000 ¹¹	59	F	Epigastric pain, weight loss	N/A	None No structural disease	Normal	Normal	Normal	Elevated	N/A	N/A	Tumor in segments 6 and 7 of R liver lobe	Tumor in segments 6 and 7 of R liver lobe	N/A	6,7	10cm tumor, non-encapsulated tumor w/ columnar/cuboidal cell w/ necrosis consistent with likely poorly differentiated adenocarcinoma. Liver nodules scattered throughout found to be BDHs	Intrahepatic cholangiocarcinoma (ICC)	Liver biopsy + Right sided hemihepatectomy performed
Blanc, 2000 ¹²	61	M	Asymptomatic	N/A	Genetic hemochromatosis, ETOH/tobacco use	Normal	Normal	N/A	Normal	Normal	Normal	N/A	2 adjacent tumors in liver segment 6	2 adjacent tumors in liver segment 6	6	Tumor composed of two distinct parts: 1) white, typical of cholangiocarcinoma w/ VMCs, 2) green, moderately differentiated HCC w/ necrosis and macro-trabecular glands	Concurrent HCC and ICC	Resection of segment 6, unclear post-operative course
Kim, 2011 ¹³	66	M	Asymptomatic	Normal	HTN No structural disease	Normal	Normal	N/A	N/A	N/A	N/A	N/A	2 lobulated masses w/ bulging contour in R liver lobe	N/A	Right	Consistent with cholangiocarcinoma w/ surrounding VMCs	ICC	R liver lobectomy, at 10 months post-op no recurrence
Li, 2009 ¹⁴	71	F	Asymptomatic	N/A	Hepatitis B No structural disease	Normal	Normal	Normal	Normal	Normal	Normal	mass 8 by 6 cm	segments 6 and 7, measuring 8.6 cm × 6.8 cm × 7.7 cm with slight arterial enhancement and a necrotic center,	N/A	6,7,8	N/A	cholangiocarcinoma arising from a pre-existing bile duct hamartoma	right hepatectomy with a cholecystectomy, favorable
Parekh, 2013 ¹⁵	76	F	Abdominal distension	N/A	None No structural disease	N/A	N/A	N/A	N/A	N/A	N/A	N/A	N/A	N/A	5, 4A	well-differentiated cholangiocarcinoma and numerous VMCs. Tumor cells were positive for CK7 and CA19.9 with focal staining for CK20, but negative for TTF-1 and p63	Cholangiocarcinoma and VMC	Right partial hepatectomy of segment 5, wedge biopsy of segment 4A, and cholecystectomy ensued. Favorable outcome
Pinho, 2012 ¹⁶	56	F	N/A	N/A	N/A Bile duct adenoma	N/A	N/A	N/A	N/A	N/A	N/A	31.8 mm nodule in liver segment 5	N/A	growth of the nodule to 38.3 mm, with no evidence of extra-hepatic disease in several imagiological studies	Liver segment V	Bile duct adenoma	ICC in setting of bile duct adenoma	right hepatectomy. Favorable outcome
Zimpfer, 2007 ¹⁷	73	M	N/A	N/A	N/A No structural disease	N/A	N/A	N/A	N/A	N/A	N/A	Hepatic mass	N/A	N/A	N/A	multiple dilated bile duct, some containing bile plugs, small glandular units lined by cuboidal cells with marked atypia, dense desmoplastic stroma and invaded the liver parenchyma. CK7 positive	ICC and BDH	None
Jain, 2000 ¹⁸	63	M	Abdominal Pain	Splenomegaly, ascites	ETOH Use Disorder No structural disease	Normal	Normal	Normal	Normal	Normal	Normal	5 cm mass	N/A	N/A	L lobe	diffuse nodularity and fibrosis, numerous VMCs, ductal proliferations showing adenocarcinoma, neoplastic changes in VMC (irregular contours, insipitated bile, hyalinized stroma), mild cytologic atypia	ICC	Left lobectomy, death
	81	M	N/A	N/A	AML, CHF, HTN, T2DM, Hep C, CRF No structural disease	Normal	Normal	Normal	Normal	Normal	Normal	N/A	N/A	N/A	L lobe	diffuse nodularity and fibrosis, numerous VMCs, ductal proliferations showing adenocarcinoma,	ICC	Death, autopsy findings

	66	F	Epigastric pain	Portal HTN, splenomegaly, ascites, varices	Breast cancer, tobacco use, HTN No structural disease	Normal	Normal	Normal	Normal	Elevated ALT	Normal	N/A	N/A	N/A	Not clear/N/A	neoplastic changes in VMC (irregular contours, insipitated bile, hyalinized stroma), mild cytologic atypia diffuse nodularity and fibrosis, numerous VMCs, ductal proliferations showing adenocarcinoma, neoplastic changes in VMC (irregular contours, insipitated bile, hyalinized stroma), mild cytologic atypia	ICC	Unclear
Beard, 2004 ¹⁹	48	F	Epigastric & RUQ abdominal pain	N/A	Hepatitis C, open cholecystectomy, hysterectomy Biliary adenofibroma	N/A	N/A	N/A	N/A	N/A	N/A	echogenic 5.7 cm mass in the right lobe of the liver	5.6 × 3.4 cm lobulated subcapsular mass in segment 8, subcentimeter cystic lesions, consistent with microhamartomas, were noted in segment 7	tubulocystic composition and intermingled normal hepatic tissue	7,8	thick, dense fibrous tissue containing cytologically bland, large caliber bile ducts with intermingled benign hepatocytes	Biliary adenofibroma in setting of MBH	R hepatectomy, alive
Gupta, 2016 ³⁰	53	M	Jaundiced, clay colored stool	Jaundice, hepatomegaly 3cm below costal margin	None No structural disease	N/A	N/A	N/A	N/A	Elevated AST/ALT	N/A	N/A	presence of ill-defined soft tissue with enhancement at the confluence of the right and the left hepatic ducts. Bilateral intrahepatic biliary radicles were dilated and the confluence was non patent	dilated bilateral intrahepatic bile duct radicles with collapsed gallbladder. There was presence of a 2.5 by 2.0 cm heterogeneous lesion with altered intensity at the porta. The common bile duct was not visualised.	Not clear/N/A	Multiple VMCs with complete ductal plate dysgenesis were also seen	VMC w/ Klatskin tumor	Caudate lobe excision, right hepatectomy, alive
Jang, 2014 ²¹	44	F	N/A	N/A	None Biliary cystadenoma, Caroli disease	N/A	N/A	N/A	N/A	N/A	N/A	N/A	septated cystic lesion measuring 4 cm in diameter was noted in segment 2 without dilatation of adjacent intrahepatic bile ducts	T1 hypointense and T2 hyperintense focal lesion adjacent to the cystic lesion and dilated intrahepatic ducts in the left lateral section of the liver	N/A	the affected large intrahepatic bile ducts were markedly dilated and surrounded by various degrees of fibrosis and chronic active inflammation. Most of the ducts were lined by flattened cuboidal or columnar epithelium, and some dilated ducts demonstrated polypoid fibrovascular projections characteristic of ductal plate malformation (DPM). Ascending cholangitis with periductal fibrosis was seen in some smaller peripheral bile duct branches, and the bile duct mucosa were ulcerated and the lumens filled with inflammatory exudate [Fig. 3H]. There was no histological evidence of associated congenital hepatic fibrosis.	ICC	Left lateral sectionectomy, alive
Lin, 2018 ²²	62	F	N/A	N/A	PCKD	N/A	N/A	N/A	N/A	Elevated	N/A	N/A	N/A	VMC changes	N/A	moderately differentiated hepatocellular carcinoma (HCC) and the existence of VMCs	HCC and VMC	Supportive, alive

F- female, M-male, RUQ- right upper quadrant, AFP- alpha fetoprotein, CEA- carcinoembryonic antigen, AST- aspartate aminotransferase, ALT- alanine aminotransferase, N/A- not applicable, HTN- hypertension, TB- tuberculosis, HBV- Hepatitis B virus, TB- tuberculosis, ETOH- ethanol use disorder, CLD-chronic liver disease, DM- diabetes mellitus, BPH- benign prostatic hyperplasia, PCKD- polycystic kidney disease, CT- computed tomography, MRI- magnetic resonance imaging, R-right, L-left, HCC- hepatocellular carcinoma, VMC- Von Meyenburg Complexes, ICC- intrahepatic cholangiocarcinoma

medRxiv preprint doi: <https://doi.org/10.1101/2021.04.17.21255674>; this version posted April 22, 2021. The copyright holder for this preprint (which was not certified by peer review) is the author/funder, who has granted medRxiv a license to display the preprint in perpetuity. It is made available under a [CC-BY-NC-ND 4.0 International license](#).



medRxiv preprint doi: <https://doi.org/10.1101/2021.04.17.21255674>; this version posted April 22, 2021. The copyright holder for this preprint (which was not certified by peer review) is the author/funder, who has granted medRxiv a license to display the preprint in perpetuity. It is made available under a [CC-BY-NC-ND 4.0 International license](https://creativecommons.org/licenses/by-nc-nd/4.0/).

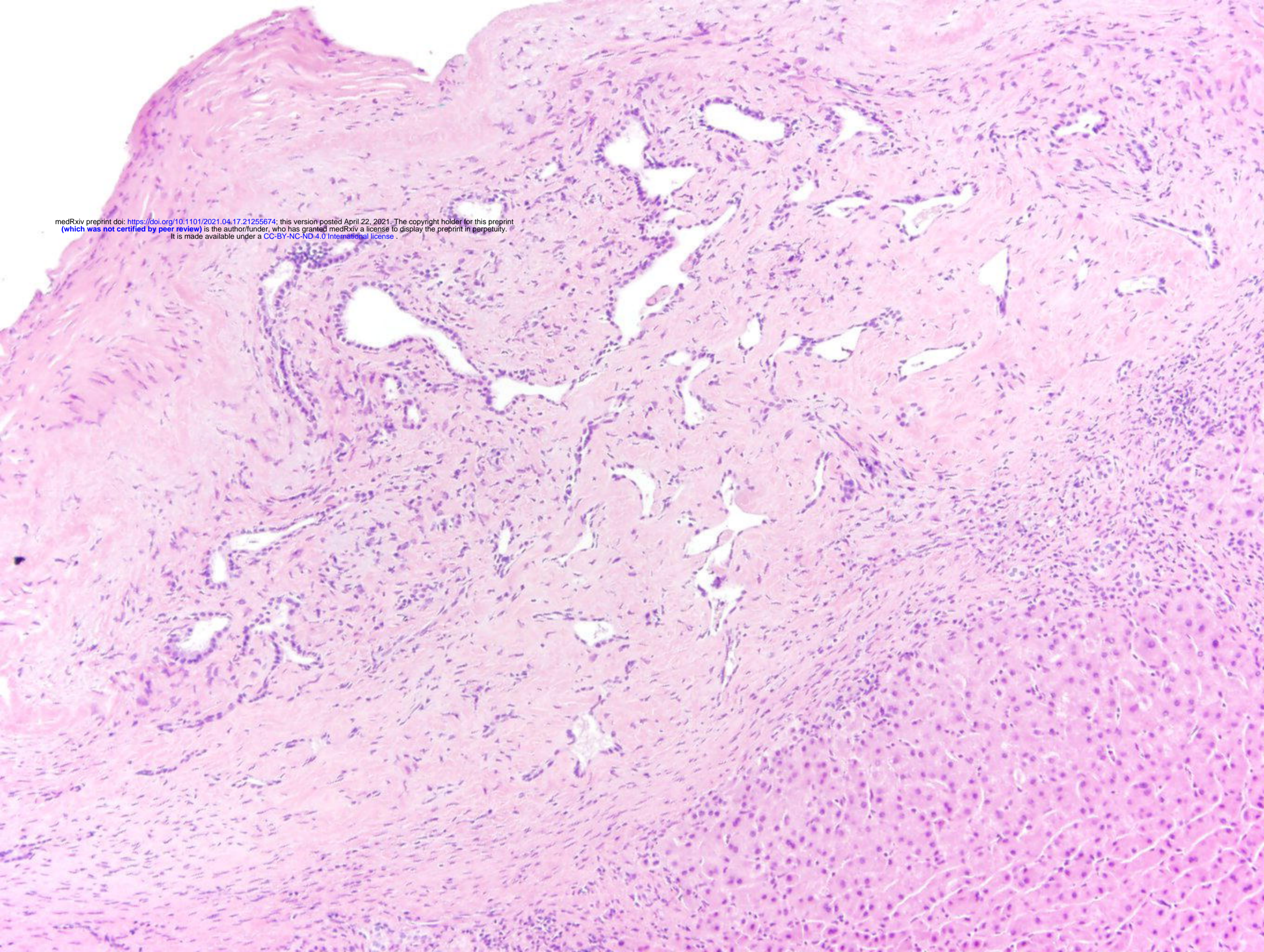
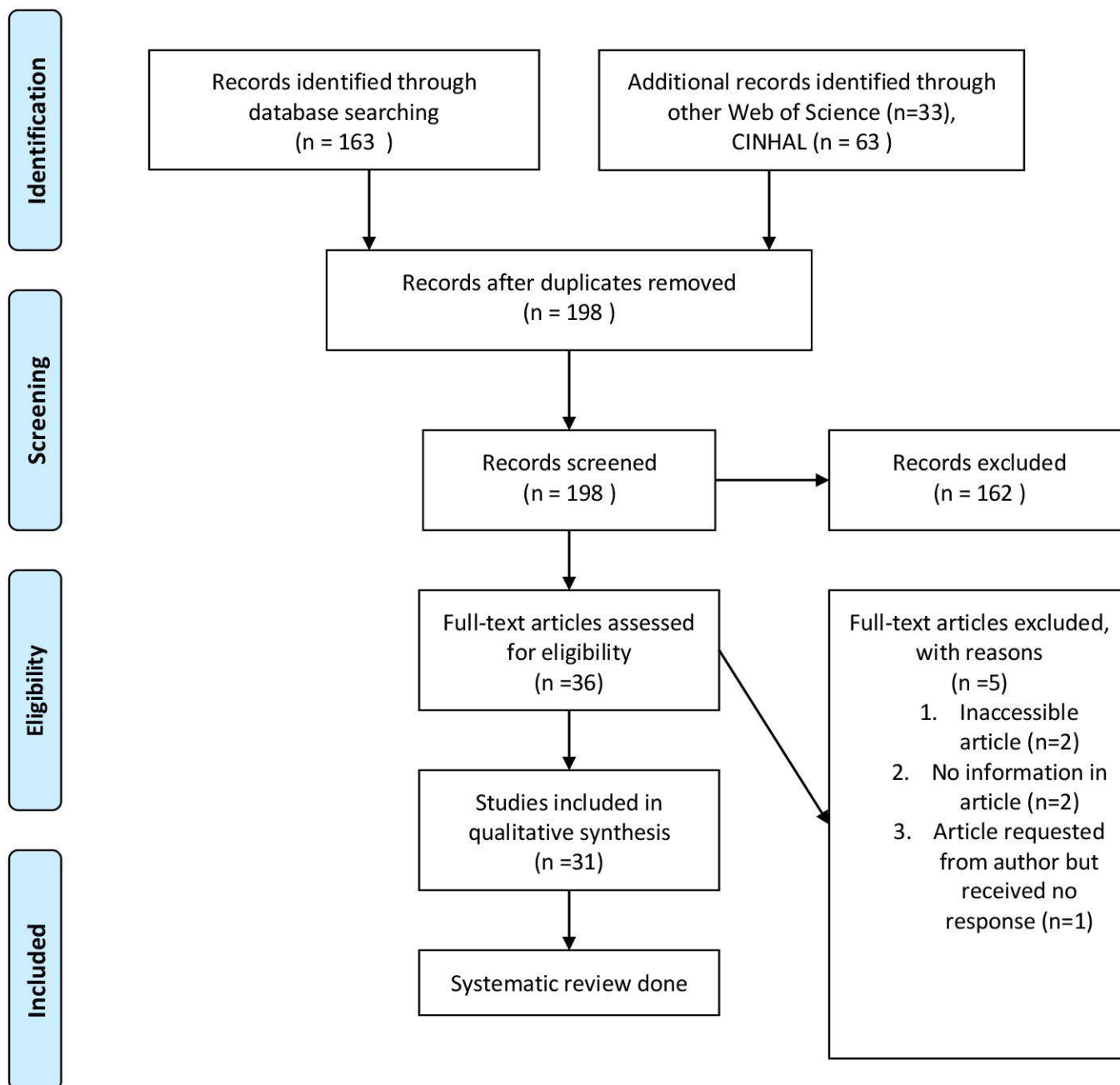


Figure 1: PRISMA 2009 Flow Diagram



From: Moher D, Liberati A, Tetzlaff J, Altman DG, The PRISMA Group (2009). Preferred Reporting Items for Systematic Reviews and Meta-Analyses: The PRISMA Statement. PLoS Med 6(7): e1000097. doi:10.1371/journal.pmed1000097

For more information, visit www.prisma-statement.org.