

Polygenic Risk for Schizophrenia, Brain Structure and Environmental Risk in UK Biobank

Xingxing Zhu^{*1}, Joey Ward¹, Breda Cullen¹, Donald M. Lyall¹, Rona J. Strawbridge^{1,2,3}, Laura M. Lyall¹, Daniel J. Smith¹

1. Institute of Health and Wellbeing, University of Glasgow, Glasgow, UK

2. Cardiovascular Medicine Unit, Department of Medicine Solna, Karolinska Institutet, Stockholm, Sweden

3. Health Data Research (HDR) UK

*Corresponding author: Xingxing Zhu (2487460Z@student.gla.ac.uk)

Abstract

Schizophrenia is a heritable neurodevelopmental disorder characterized by neuroanatomical changes in the brain but exactly how increased genetic burden for schizophrenia influences brain structure is unknown. Similarly, the impact of environmental risk factors for schizophrenia on brain structure is not fully understood. We investigated how genetic burden for schizophrenia (indexed by a polygenic risk score, PRS-SCZ) was associated with cortical thickness (CT), cortical surface area (SA), cortical volume (CV) and multiple subcortical structures within 18,147 White British ancestry participants from UK Biobank. We also explored whether environmental risk factors for schizophrenia (cannabis use, childhood trauma, low birth weight and Townsend social deprivation index) exacerbated the impact of PRS-SCZ on brain structure. We found that PRS-SCZ was significantly associated with lower CT in the frontal lobe, insula lobe, lateral orbitofrontal cortex, medial orbitofrontal cortex, posterior cingulate cortex and inferior frontal cortex, as well as reduced SA and CV in the supramarginal cortex and superior temporal cortex, but not with differences in subcortical volumes. When models included environmental risk factors as covariates, PRS-SCZ was only associated with lower SA/CV within the supramarginal cortex, superior temporal cortex and inferior frontal cortex. Moreover, no interactions were observed between PRS-SCZ and each of the environmental risk factors on brain structure. Overall, we identified brain structural correlates of PRS-SCZ predominantly within frontal and temporal regions. Some of these associations were independent of environmental risk factors, suggesting that they may represent biomarkers of genetic risk for schizophrenia.

key words: schizophrenia; polygenic risk; environmental risk; cortical thickness; surface area; cortical volume

Introduction

Schizophrenia is a debilitating and complex psychiatric disorder, affecting about 1% of the population¹. It is a heritable condition that arises via a complex interaction of genetic and environmental risk factors². Neuroimaging studies have reported brain structural alterations in cortical and subcortical regions in people with schizophrenia relative to healthy individuals³⁻⁶. These brain changes could be driven by genetic factors and may mediate the effect of genetic risk on the phenotype of schizophrenia⁷⁻⁹. Genome-wide association studies (GWAS) have identified hundreds of significant loci and indicate a polygenic architecture of schizophrenia^{8,10,11}. A polygenic risk score for schizophrenia, which captures the cumulative effect of significant risk loci across the whole genome, is useful in exploring the neurobiology of schizophrenia¹²⁻¹⁴. To date, little is known about how polygenic risk for schizophrenia influences brain structure, or how environmental risk factors may influence these associations.

Convergent evidence has demonstrated widespread grey matter reductions in individuals with schizophrenia, including lower cortical volume (CV), reduced cortical thickness (CT) and smaller surface area (SA) and subcortical volumes, predominantly in the frontal and temporal regions^{3,15-17}. Longitudinal neuroimaging studies have demonstrated progressive grey matter changes related to schizophrenia¹⁸⁻²⁰ as well as morphological differences that may be present prior to the onset of symptoms^{20,21}. High-risk familial studies have observed brain structural alterations in unaffected relatives of patients with schizophrenia relative to controls, suggesting a genetic contribution²²⁻²⁴. The association between polygenic risk scores for schizophrenia (PRS-SCZ) and brain structure has been the subject of some early investigations. Initial work focused on total brain volume, total grey/white matter volume, lateral ventricular volume and subcortical volumes^{25,26}, and a systematic review of seven studies found inconsistent findings plus a lack of significant associations²⁷. The biggest study (N = 14,701) to date reported significant negative associations between genetic risk for schizophrenia and the right pallidum and right thalamus volumes¹³. Studies on cortical measures have also reported negative associations between PRS-SCZ and global CT and insular lobe CT¹², frontal and temporal cortex CT⁵, rostral anterior cingulate cortex CT²⁸ within the general population, as well as global cortical thinning in patients with schizophrenia and bipolar disorder²⁹. Relatively few studies have systematically examined associations between PRS-SCZ and regional CT, SA and CV^{5,12,28}. In addition, none of published studies in this area have taken account of the possible influence of environmental risk factors for schizophrenia on brain structure^{5,12,28}.

Environmental risk factors, along with their interaction with genetic risk, contribute to the occurrence and development of schizophrenia^{2,30,31}. Epidemiological studies have identified that childhood adverse events, cannabis use, obstetric complications, and low socioeconomic status are among the strongest non-genetic risk factors for schizophrenia³²⁻³⁶. These factors may contribute, at least in part, to some of the brain structural abnormalities observed in schizophrenia^{29,37,38} and may also contribute to gene-environment interactions^{38,39}.

Here we investigate associations between PRS-SCZ and cortical metrics (CV, SA, and CT), as well as subcortical volumes, using data from ~18,000 White British ancestry individuals from UK Biobank. We also assess the impact of environmental risk factors (childhood trauma, cannabis use, birth weight, and Townsend social deprivation index) on any observed associations between PRS-SCZ and these environmental risk factors. We hypothesized that a higher PRS-SCZ would be associated with lower global CT, thinner frontal and temporal cortices, thinner insula lobe, smaller thalamus and pallidum^{5,12,13} and more localized brain volume reductions. In addition, we expected that environmental risk factors would influence the association between PRS-SCZ and grey matter atrophy we observed.

Methods

Participants

This study was conducted using participants from UK Biobank under approval from the NHS National Research Ethics Service (UK Biobank approved applications #6553 and #17689). Freesurfer data (released by Jan 2020) based on the Desikan-Killiany cortical atlas⁴⁰ were available for a total of 21,915 participants. Participants were excluded for the following reasons: having a developmental or neurological disorder (See Table S1 for detailed participant exclusion criteria); having withdrawn from the projects; non-White British ancestry base on self-report and genetic data; intracranial volume beyond three standard deviations from the sample mean; and genetic data failing to pass quality control. A total of 18,147 participants were included in this study.

Derivation of the polygenic risk score for schizophrenia

LDpred was utilized to calculate the PRS-SCZ⁴¹, based on the summary statistics from a GWAS specific to schizophrenia¹⁰, which included 33,426 schizophrenia patients and 54,065 controls, excluding individuals from UK Biobank. Participants were excluded if over 10% of genetic data was missing; if self-reported sex did not match genetic sex; if purported sex chromosome aneuploidy was reported; and if heterozygosity value was a clear outlier.

Brain imaging variables

All neuroimaging data were acquired, pre-processed, quality controlled and made available by UK Biobank (https://biobank.ctsu.ox.ac.uk/crystal/crystal/docs/brain_mri.pdf). Details on the acquisition parameters and the imaging protocol are documented online and are described within the protocol paper ⁴². Derived phenotypes were used in this study. The main neuroimaging data consisted of global, lobar and regional values for CT, SA and CV of 33 regions (data of temporal pole are not available) in each hemisphere from the Desikan-Killiany cortical atlas ⁴⁰. Global and lobar values were calculated as per Neilson et al. ¹². In addition, we analysed subcortical volumes including thalamus, caudate, putamen, pallidum, hippocampus, amygdala, accumbens processed by subcortical volumetric segmentation in Freesurfer. A more detailed description of these variables is provided within supplementary materials.

Environmental risk factors

Childhood trauma was calculated by summing five online questions on previous adversity (data field 20487 to 20491). These questions cover the self-reported frequency of feeling loved, being physically abused, feeling hated, being sexually molested and being taken to the doctor when needed as a child. Participants answered these questions by selecting “Prefer not to answer”, “Never true”, “Rarely true”, “Sometimes true”, “Often” or “Very often true” (supplementary materials).

Cannabis use (<https://biobank.ctsu.ox.ac.uk/crystal/field.cgi?id=20453>) was reported via an online question, “Have you taken CANNABIS (marijuana, grass, hash, ganja, blow, draw, skunk, weed, spliff, dope), even if it was a long time ago?”. Participants chose from “Prefer not to answer”, “No”, “Yes, 1-2 times”, “Yes, 3-10 times”, “Yes, 11-100 times” and “Yes, more than 100 times”. We grouped participants into two categories: never (participants who answered “No”) and ever (participants who answered “Yes”, having used cannabis at least once).

Birth weight (<https://biobank.ctsu.ox.ac.uk/crystal/field.cgi?id=20022>) was reported by participants during a verbal interview. To maximise the number of participants included in analyses, missing values at the initial assessment visit were replaced by those at the first repeat assessment visit or the imaging visit.

The Townsend deprivation index (<https://biobank.ctsu.ox.ac.uk/crystal/field.cgi?id=189>) is based on postcode reported at baseline assessment in UK Biobank. A greater Townsend index score implies a higher level of neighbourhood social and economic deprivation.

Statistical analysis

All analyses were carried out using Stata/MP 15.0. For associations between PRS-SCZ and brain structure, PRS-SCZ was set as the independent variable; each brain structural measure was set as an outcome. PRS-SCZ \times hemisphere interactions were examined in a repeated measures format to determine whether analysis of left and right homologous structures separately was required, with sex, age, age², hemisphere, ICV, scanner positions on the x, y and z axes, genotype array and the first fifteen genetic principal components included as covariates. For brain measures that did not show PRS-SCZ \times hemisphere interaction, we repeated the linear mixed model with hemisphere as a fixed effect and included the same covariates as in analyses testing for interaction effects. If there was a significant interaction, analyses on both lateralised structures would be conducted separately. PRS-SCZ and each brain outcome were rescaled into zero mean and unitary standard deviation. Participants with PRS and each brain outcome beyond three standard deviations were excluded. False Discovery Rate (FDR) correction⁴³, with a significance threshold of $p < 0.05$, was applied for each metric individually, by correcting over all eight possible lobar structures, twenty-six parcellations or seven subcortical volumes, using 'p.adjust' function in R.

Furthermore, considering the potential impact of environmental risk factors, we investigated whether associations between PRS-SCZ and brain measures were significant when childhood trauma, cannabis use, birth weight and Townsend deprivation index were included as additional covariates. In total, 8,707 individuals had complete data for all four environmental factors. Because the subsample was much smaller compared to that in the main analyses, we wished to clarify whether the reduction in sample size influenced the results. Therefore, we repeated previous analyses in this subsample (N = 8,707) without controlling for environmental risk factors. For further examination of the influence of environmental risk factors on the relationship between PRS-SCZ and brain structure, we excluded 21 individuals who definitely had used antipsychotic medication (self-reported at the imaging visit), considering that antipsychotic medication may also influence brain structure^{44,45}.

We also examined the interaction between PRS-SCZ and each of the environmental risk factors on brain structure. The interaction term, together with main effects of the PRS-SCZ and the environmental risk factor were included in the model, as well as same covariates in the analysis for PRS-SCZ and brain structure. Multiple comparisons correction for interaction effects was done using FDR correction ($p < 0.05$) in the same way.

Results

Demographics

A total of 18,147 participants (ages 45-80 years, 8,651 males) were included in the analysis. Characteristics of the participants are provided in Table 1. There was no significant sex difference in PRS-SCZ (female = 0.006, male = -0.007, $t = 0.942$, $p = 0.346$), but the differences in birth weight (female = 3.278 kg, male = 3.462 kg, $t = -16.486$, $p < 0.001$), childhood trauma (female = 1.796, male = 1.544, $t = 6.201$, $p < 0.001$) and cannabis use (17.766% females vs 23.902% males, Chi squared 76.093, $p < 0.001$) were significant.

Associations between PRS-SCZ and cortical thickness

We did not find a significant interaction between PRS-SCZ and hemisphere for either global or regional CT (Table S2) and there was no significant association between PRS-SCZ and global CT ($\beta = -0.012$, $p_{\text{corrected}} = 0.160$; Table 2 shows significant associations only; Table S3 lists all the results). In the eight lobar structures, CT in the frontal lobe ($\beta = -0.018$, $p_{\text{corrected}} = 0.040$; Table 2) and insula lobe ($\beta = -0.016$, $p_{\text{corrected}} = 0.040$) were negatively associated with PRS-SCZ. Moreover, we found significant negative associations between PRS-SCZ and CT in the lateral orbitofrontal cortex ($\beta = -0.025$, $p_{\text{corrected}} < 0.001$), the medial orbitofrontal cortex ($\beta = -0.019$, $p_{\text{corrected}} = 0.013$), the posterior cingulate cortex ($\beta = -0.021$, $p_{\text{corrected}} = 0.009$) and the inferior frontal cortex ($\beta = -0.026$, $p_{\text{corrected}} < 0.001$). Figure 1A illustrates the associations between PRS-SCZ and regional CT.

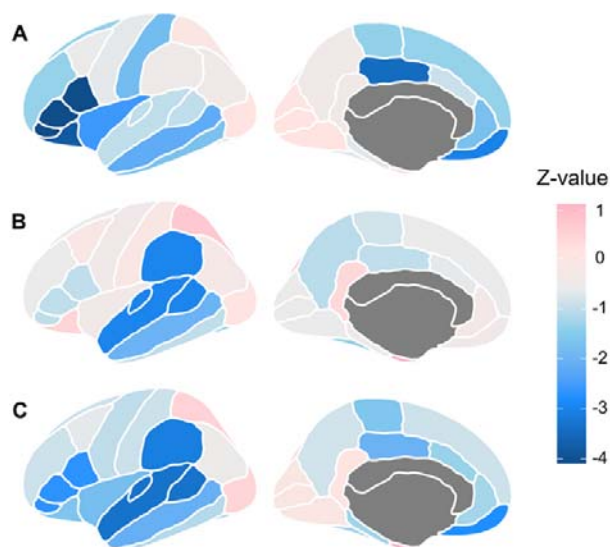


Figure 1: Cortical map of associations between the polygenic risk score for schizophrenia and (A) cortical thickness, (B) surface area and (C) cortical volume.

Regions were mapped on the left hemisphere.

In the subsample with complete data on environmental risk factors (childhood trauma, cannabis use, birth weight and Townsend deprivation index) we found modest negative associations between PRS-SCZ and CT in the above regions (Table S4), although none of these associations were significant after FDR correction in this smaller sample. Similarly, after controlling for the environmental risk factors and excluding participants who had used antipsychotic medication, there were no significant associations, although a similar negative pattern of association was found (Table 3 shows significant associations only; Table S5 lists all the results; Figure S1).

Associations between PRS-SCZ and surface area

No interactions were observed between PRS-SCZ and hemisphere for global or regional SA (Table S2). Although PRS-SCZ was not associated with global SA ($\beta = -0.002$, $p_{\text{corrected}} = 0.672$; Table S3; Figure 1B), we found an association with reduced SA in the supramarginal cortex ($\beta = -0.016$, $p_{\text{corrected}} = 0.026$; Table 2) and the superior temporal cortex ($\beta = -0.015$, $p_{\text{corrected}} = 0.026$). Analyses in the subsample also found significant associations with these two regions, in addition to inferior frontal cortex (Table S4).

When these analyses were adjusted for environmental factors, the associations with supramarginal cortex ($\beta = -0.028$, $p_{\text{corrected}} < 0.001$; Table 3), superior temporal cortex ($\beta = -0.021$, $p_{\text{corrected}} = 0.026$) and inferior frontal cortex ($\beta = -0.022$, $p_{\text{corrected}} = 0.035$) remained significant.

Associations between PRS-SCZ and cortical volume

Analyses for the interaction between PRS-SCZ and hemisphere on global or regional CV did not demonstrate any significant effects (Table S2). Similar to the results for surface area, PRS-SCZ was not associated with global CV ($\beta = -0.004$, $p_{\text{corrected}} = 0.449$; Table S3; Figure 1C), but there were significant negative associations with supramarginal cortex ($\beta = -0.016$, $p_{\text{corrected}} = 0.013$; Table 2) and superior temporal cortex ($\beta = -0.018$, $p_{\text{corrected}} < 0.001$).

Analyses in the subsample with complete environmental risk factor data found significant negative associations with the supramarginal cortex and inferior frontal cortex (Table S4). Among them, inferior frontal cortex ($\beta = -0.026$, $p_{\text{corrected}} = 0.026$; Table 3) remained significant when environmental risk factors were added as covariates.

Associations between PRS-SCZ and subcortical volumes

Analyses for the interaction between PRS-SCZ and hemisphere found a significant interaction effect for the hippocampus ($\beta = -0.011$, $p_{\text{corrected}} = 0.025$; Table S2) and nucleus accumbens ($\beta = -0.015$, $p_{\text{corrected}} = 0.025$). Therefore, we also examined the left and right hippocampus and nucleus accumbens separately in following analyses.

PRS-SCZ had a negative association with volume in the right accumbens before ($\beta = -0.013$, $p_{\text{uncorrected}} = 0.043$; Table S3), but not after FDR correction. Similarly, when environmental risk factors were taken into account, no subcortical structure survived correction for multiple comparisons correction (Table S5).

PRS-SCZ and environmental risk factors

We firstly tested gene by environment correlation using the linear regression or logistic regression model (cannabis use) for each of the environmental factors. We found PRS-SCZ was significantly associated with Townsend deprivation index ($\beta = 0.039$, $t = 1.98$, $p = 0.048$), cannabis use (odds ratio = 1.077, $z = 3.22$, $p = 0.001$) and childhood trauma ($\beta = 0.139$, $t = 6.68$, $p < 0.001$), but not birth weight ($\beta = -0.004$, $t = -0.62$, $p = 0.535$).

For the interaction between PRS-SCZ and environmental risk factors, we found no statistically significant results, albeit some modest associations before FDR correction. For example, PRS-SCZ \times childhood trauma on SA in the medial orbitofrontal cortex ($\beta = -0.006$, $p_{\text{uncorrected}} = 0.013$; Table S6): there was a negative association of PRS-SCZ with SA in the medial orbitofrontal cortex in participants exposed to more childhood trauma and a positive association in those who experienced less childhood trauma. More detailed results for the interaction effect are shown in Table S6-S9. Statistics for main effects of the environmental factors are also given (table S10-S13).

Discussion

In this study we have observed associations between an increased genetic liability for developing schizophrenia and wide-spread cortical differences in generally population, including lower CT in frontal lobe, insula lobe, lateral orbitofrontal cortex, medial orbitofrontal cortex, inferior frontal cortex and posterior cingulate cortex, as well as reduced SA and CV in the supramarginal cortex and superior temporal cortex. In addition, the associations with reduced SA and CV remained after adjustment for environmental risk factors, indicating that some cortical alterations might be driven predominantly by genetic liability for schizophrenia rather than environmental risk factors. Finally, our results suggest that PRS-SCZ and these environmental risk factors may contribute independently to brain abnormalities in schizophrenia. Overall, our findings have expanded on previous findings by making use of data within a much larger population-based sample.

PRS-SCZ and CT

Previous studies of the relationship between PRS-SCZ and global CT have been inconsistent, with global cortical thinning^{12,29} or no association⁴⁶ reported. Here, we found no association between PRS-SCZ and global CT, which is unsurprising because schizophrenia-associated genetic variants showed no significant enrichment in mean CT⁹. For regional measures, we replicated significant associations with reduced CT in insula, lateral orbitofrontal cortex and inferior frontal gyrus, as reported in previous studies in UK Biobank^{5,12,47}. In addition, we observed reduced CT within the frontal lobe, medial orbitofrontal cortex and posterior cingulate cortex. Reduced CT in these regions has been commonly observed in individuals with schizophrenia^{3,17,48-50} and in individuals at high genetic risk of schizophrenia^{24,48,51}. These regions may also be implicated in the symptoms seen in schizophrenia: the insula is engaged in auditory hallucinations⁴⁷; the orbitofrontal cortex is thought to play a role in negative symptoms⁵²; and the frontal lobe has shown associations with cognitive impairment in schizophrenia⁵³.

PRS-SCZ and SA

We found that PRS-SCZ was not associated with global SA. Regarding this, previous studies have reported inconsistent findings^{12,46,54}. Analyses for regional SA found negative associations within temporal cortices: the supramarginal cortex and superior temporal cortex. This is in line with the significant enrichment of schizophrenia GWAS loci in SA of temporal regions⁹. Previous studies support structural differences in superior temporal gyrus and inferior frontal cortex as possible biomarkers in schizophrenia^{55,56}. Baseline grey matter

reductions in superior temporal and inferior frontal areas are associated with later transition to psychosis²¹. Additionally, correlations have been observed between superior temporal gyrus atrophy and positive psychotic symptoms, especially auditory verbal hallucinations⁵⁷⁻⁵⁹. Similarly, the involvement of supramarginal and inferior frontal cortex in auditory hallucinations has been extensively documented⁶⁰ and the supramarginal gyrus is associated with delusions of reference and persecutory delusions⁴⁷. Alterations in these regions may represent general susceptibility to psychotic symptoms and vulnerability to developing schizophrenia.

PRS-SCZ and CV

For the relationship between PRS-SCZ and brain volume, findings were also contradictory. Van Scheltinga et al.²⁵ found PRS-SCZ was significantly associated with smaller total brain volume regardless of disease status, but later studies found different results even within larger samples^{12,26,61,62}. We found no such association. However, we found significant volume reduction in supramarginal cortex and superior temporal cortex. When environmental risk factors were taken into account, an association with inferior frontal cortex volume was significant, and both supramarginal cortex and superior temporal cortex were nominally significant. As indicated earlier, this is in line with putative roles for these structures in processing auditory inputs, and their relation to auditory hallucinations in schizophrenia^{57,63,64}.

PRS-SCZ and subcortical volumes

For subcortical volumes, although some studies have reported associations of PRS-SCZ with smaller thalamus and pallidum volume^{13,26,54,65}, others have found no association^{5,46,66}. Here, we observed no association with thalamus or pallidum volumes and a modest association with the right nucleus accumbens. Smaller nucleus accumbens has been reported in individuals with schizophrenia^{4,5}, as well as in their first-degree relatives^{22,48}. The nucleus accumbens is implicated in numerous neurological and psychiatric disorders, and is a main target of antipsychotic drugs and neurosurgical intervention in schizophrenia^{67,68}. However, it should be noted that the association with the right nucleus accumbens was no longer significant after FDR correction. Overall, our data suggest that subcortical brain volumes are not strongly associated with genetic mechanisms of schizophrenia.

Influence of environmental risk factors

When environmental risk factors were included in the model as covariates and participants on antipsychotic medication were excluded, we observed a similar pattern of grey matter reduction; the effects for the supramarginal cortex, superior temporal cortex and inferior frontal

cortex remained significant. Although these environmental risk factors seem to show little impact, they are still important considerations. Marsman et al.⁶⁹ examined the relative contributions of genes and environment to mental health and found that familial and environmental factors explained around 17% of the variance, of which around 3% by PRS. Indeed, environmental risk factors, such as cannabis use, childhood trauma and socioeconomic status, increase the risk for multidimensional symptoms in schizophrenia, including cognitive, affective, negative and predominantly positive symptoms such as hallucinations and delusions⁷⁰⁻⁷³ and elevate the risk of developing schizophrenia^{74,75}. Moreover, these environmental risk factors exhibit associations with structural differences in widespread brain regions across frontal, parietal, temporal and occipital cortex, as well as in subcortical volumes^{39,76-78}. Our results also showed significant associations between birth weight and the brain measures that were significant in analyses including environmental risk factors as covariates, although the other three environmental factors did not show such associations. Future studies on brain abnormalities in schizophrenia should consider the role of environmental risks more closely.

Correlation between PRS-SCZ and environmental risk factors

We found that genetic risk for schizophrenia was associated with greater likelihood of using cannabis^{79,80}, experiencing more childhood trauma^{81,82} and higher socioeconomic deprivation, but not birth weight¹². Previous studies on the genetic influences on environmental measures demonstrate considerable heritability⁸³ and GWASs have found many genetic variants associated with Townsend deprivation index^{84,85}, birth weight⁸⁶ and cannabis use^{87,88}. Other studies also report genetic correlations between Townsend deprivation index, cannabis use and schizophrenia^{80,84,87}. As a result, the associations we observed may be due to shared genetic aetiologies.

Interaction between PRS-SCZ and environmental risk factors

To our knowledge, only one study so far has reported significant interaction between PRS-SCZ and environmental risk on brain structure: PRS-SCZ was negatively associated with mean CT in male cannabis users, while there was no significant association in male nonusers³⁸. By contrast, studies focused on schizophrenia susceptibility genes especially COMT (catechol-O-methyltransferase) and BDNF (brain-derived neurotrophic factor) demonstrated interactions with obstetric complications, early life stress and cannabis abuse^{89,90}, supporting the role of gene–environment interaction. Together with the modest interaction in this study, while preliminary, we recommend that further confirmatory studies in even larger clinical and

non-clinical samples should be conducted to improve understanding of gene-environment interactions in schizophrenia.

Strengths and Limitations

This study represents the largest neuroimaging PRS-SCZ study to date, identifying associations with multiple brain measures. Nevertheless, it is unclear to what extent these structural differences are causes, consequences or confounders of schizophrenia. Importantly, we also considered the influence of environmental risk factors for schizophrenia and explored gene-by-environment interactions on structural brain measures. Considering the modest significant associations, further studies which take these variables into account will need to be undertaken with larger samples. Furthermore, our study was conducted in White British participants aged from 45 to 80, which may restrict generalization of our findings to the other populations with different ancestry or age range. Finally, the environmental factors in this study were limited to childhood trauma, cannabis use, Townsend deprivation index and birth weight. To develop a fuller picture of gene-by-environment interactions, additional studies on other factors such as migration background⁹¹ are required.

Conclusion

In summary, this study suggests that grey matter reductions in multiple regions, predominantly in frontal and temporal regions, are neuroanatomical correlates of increased genetic liability for schizophrenia. Further, environmental risk factors such as childhood trauma, cannabis use, Townsend deprivation index and birth weight, appear to contribute very little to these associations, plus genetic liability for schizophrenia and these environmental factors contribute independently to brain abnormalities in schizophrenia. Our findings are meaningful in terms of identifying neuroimaging-based biomarkers for schizophrenia and elucidating the complex pathophysiology of schizophrenia.

Acknowledgments

XZ acknowledges financial support from China Scholarship Council. RJS is funded by UKRI Innovation-HDR-UK Fellowship (MR/S003061/1). DJS acknowledges support from a Lister Institute Prize Fellowship and an MRC Mental Health Data Pathfinder Award (MC_PC_17217). JW is funded by DJS Lister Institute Prize Fellowship. LML is supported by a Royal College of Physicians of Edinburgh JMAS Sim Fellowship.

References

1. Whiteford HA, Degenhardt L, Rehm J et al. Global burden of disease attributable to mental and substance use disorders: findings from the Global Burden of Disease Study 2010. *The lancet*. 2013; 382(9904):1575-1586.
2. McCutcheon RA, Reis Marques T, Howes OD. Schizophrenia—An Overview. *JAMA Psychiatry*. 2020; 77(2):201-210.
3. Van Erp TG, Walton E, Hibar DP et al. Cortical brain abnormalities in 4474 individuals with schizophrenia and 5098 control subjects via the Enhancing Neuro Imaging Genetics Through Meta Analysis (ENIGMA) Consortium. *Biol Psychiatry*. 2018; 84(9):644-654.
4. van Erp TG, Hibar DP, Rasmussen JM et al. Subcortical brain volume abnormalities in 2028 individuals with schizophrenia and 2540 healthy controls via the ENIGMA consortium. *Mol Psychiatry*. 2016; 21(4):547-553.
5. Alnæs D, Kaufmann T, van der Meer D et al. Brain heterogeneity in schizophrenia and its association with polygenic risk. *JAMA psychiatry*. 2019; 76(7):739-748.
6. Rimol LM, Nesvåg R, Hagler Jr DJ et al. Cortical volume, surface area, and thickness in schizophrenia and bipolar disorder. *Biol Psychiatry*. 2012; 71(6):552-560.
7. Birnbaum R, Weinberger DR. Genetic insights into the neurodevelopmental origins of schizophrenia. *Nat Rev Neurosci*. 2017; 18(12):727-740.
8. Schizophrenia Working Group of the Psychiatric Genomics Consortium. Biological insights from 108 schizophrenia-associated genetic loci. *Nature*. 2014; 511(7510):421.
9. Lee PH, Baker JT, Holmes AJ et al. Partitioning heritability analysis reveals a shared genetic basis of brain anatomy and schizophrenia. *Mol Psychiatry*. 2016; 21(12):1680-1689.
10. Ruderfer DM, Ripke S, McQuillin A et al. Genomic dissection of bipolar disorder and schizophrenia, including 28 subphenotypes. *Cell*. 2018; 173(7):1705-1715. e1716.
11. Pardiñas AF, Holmans P, Pocklington AJ et al. Common schizophrenia alleles are enriched in mutation-intolerant genes and in regions under strong background selection. *Nature genetics*. 2018; 50(3):381-389.
12. Neilson E, Shen X, Cox SR et al. Impact of polygenic risk for schizophrenia on cortical structure in UK Biobank. *Biol Psychiatry*. 2019; 86(7):536-544.
13. Grama S, Willcocks I, Hubert JJ et al. Polygenic risk for schizophrenia and subcortical brain anatomy in the UK Biobank cohort. *Transl Psychiatry*. 2020; 10(1):1-10.
14. Murray RM, Vassos E. Nature, Nurture, and the Polygenic Risk Score for Schizophrenia. *Schizophr Bull*. 2020; 46(6):1363–1365.
15. Haijma SV, Van Haren N, Cahn W, Koolschijn PCM, Hulshoff Pol HE, Kahn RS. Brain volumes in schizophrenia: a meta-analysis in over 18 000 subjects. *Schizophr Bull*. 2013; 39(5):1129-1138.

16. Takayanagi Y, Sasabayashi D, Takahashi T et al. Reduced cortical thickness in schizophrenia and schizotypal disorder. *Schizophr Bull.* 2020; 46(2):387-394.
17. Madre M, Canales-Rodríguez EJ, Fuentes-Claramonte P et al. Structural abnormality in schizophrenia versus bipolar disorder: A whole brain cortical thickness, surface area, volume and gyrification analyses. *Neuroimage Clin.* 2020; 25:102131.
18. Takahashi T, Suzuki M. Brain morphologic changes in early stages of psychosis: implications for clinical application and early intervention. *Psychiatry Clin Neurosci.* 2018; 72(8):556-571.
19. Dietsche B, Kircher T, Falkenberg I. Structural brain changes in schizophrenia at different stages of the illness: a selective review of longitudinal magnetic resonance imaging studies. *Aust N Z J Psychiatry.* 2017; 51(5):500-508.
20. Sugranyes G, de la Serna E, Ilzarbe D et al. Brain structural trajectories in youth at familial risk for schizophrenia or bipolar disorder according to development of psychosis spectrum symptoms. *J Child Psychol Psychiatry.* 2020.
21. Fusar-Poli P, Borgwardt S, Crescini A et al. Neuroanatomy of vulnerability to psychosis: a voxel-based meta-analysis. *Neurosci Biobehav Rev.* 2011; 35(5):1175-1185.
22. de Zwarte SM, Brouwer RM, Agartz I et al. The association between familial risk and brain abnormalities is disease-specific: an ENIGMA–Relatives study of schizophrenia and bipolar disorder. *Biol Psychiatry.* 2019; 86(7):545-556.
23. Zhang W, Sweeney JA, Yao L et al. Brain structural correlates of familial risk for mental illness: a meta-analysis of voxel-based morphometry studies in relatives of patients with psychotic or mood disorders. *Neuropsychopharmacology.* 2020:1-11.
24. de Zwarte SMC, Brouwer RM, Agartz I et al. Intelligence, educational attainment, and brain structure in those at familial high-risk for schizophrenia or bipolar disorder. *Hum Brain Mapp.* 2020.
25. Van Scheltinga AFT, Bakker SC, Van Haren NE et al. Genetic schizophrenia risk variants jointly modulate total brain and white matter volume. *Biol Psychiatry.* 2013; 73(6):525-531.
26. Reus LM, Shen X, Gibson J et al. Association of polygenic risk for major psychiatric illness with subcortical volumes and white matter integrity in UK Biobank. *Sci Rep.* 2017; 7:42140.
27. van der Merwe C, Passchier R, Mufford M, Ramesar R, Dalvie S, Stein D. Polygenic risk for schizophrenia and associated brain structural changes: A systematic review. *Compr Psychiatry.* 2019; 88:77-82.
28. Harris MA, Shen X, Cox SR et al. Stratifying major depressive disorder by polygenic risk for schizophrenia in relation to structural brain measures. *Psychol Med.* 2020; 50(10):1653-1662.

29. Neilson E, Bois C, Gibson J et al. Effects of environmental risks and polygenic loading for schizophrenia on cortical thickness. *Schizophr Res.* 2017; 184:128-136.
30. Van Os J, Rutten BP, Poulton R. Gene-environment interactions in schizophrenia: review of epidemiological findings and future directions. *Schizophr Bull.* 2008; 34(6):1066-1082.
31. Howes OD, Murray RM. Schizophrenia: an integrated sociodevelopmental-cognitive model. *The Lancet.* 2014; 383(9929):1677-1687.
32. Van Os J, Kenis G, Rutten BP. The environment and schizophrenia. *Nature.* 2010; 468(7321):203-212.
33. Agerbo E, Sullivan PF, Vilhjálmsson BJ et al. Polygenic risk score, parental socioeconomic status, family history of psychiatric disorders, and the risk for schizophrenia: a Danish population-based study and meta-analysis. *JAMA psychiatry.* 2015; 72(7):635-641.
34. Stepniak B, Papiol S, Hammer C et al. Accumulated environmental risk determining age at schizophrenia onset: a deep phenotyping-based study. *The Lancet Psychiatry.* 2014; 1(6):444-453.
35. Schmitt A, Malchow B, Hasan A, Falkai P. The impact of environmental factors in severe psychiatric disorders. *Front Neurosci.* 2014; 8:19.
36. Belbasis L, Köhler C, Stefanis N et al. Risk factors and peripheral biomarkers for schizophrenia spectrum disorders: an umbrella review of meta-analyses. *Acta Psychiatr Scand.* 2018; 137(2):88-97.
37. Cancel A, Dallel S, Zine A, El-Hage W, Fakra E. Understanding the link between childhood trauma and schizophrenia: A systematic review of neuroimaging studies. *Neurosci Biobehav Rev.* 2019; 107:492-504.
38. French L, Gray C, Leonard G et al. Early cannabis use, polygenic risk score for schizophrenia and brain maturation in adolescence. *JAMA psychiatry.* 2015; 72(10):1002-1011.
39. Habets P, Marcelis M, Gronenschild E, Drukker M, van Os J. Reduced cortical thickness as an outcome of differential sensitivity to environmental risks in schizophrenia. *Biol Psychiatry.* 2011; 69(5):487-494.
40. Desikan RS, Ségonne F, Fischl B et al. An automated labeling system for subdividing the human cerebral cortex on MRI scans into gyral based regions of interest. *Neuroimage.* 2006; 31(3):968-980.
41. Vilhjálmsson BJ, Yang J, Finucane HK et al. Modeling linkage disequilibrium increases accuracy of polygenic risk scores. *Am J Hum Genet.* 2015; 97(4):576-592.
42. Miller KL, Alfaro-Almagro F, Bangerter NK et al. Multimodal population brain imaging in the UK Biobank prospective epidemiological study. *Nat Neurosci.* 2016; 19(11):1523.

43. Benjamini Y, Hochberg Y. Controlling the false discovery rate: a practical and powerful approach to multiple testing. *J R Stat Soc Series B Stat Methodol.* 1995; 57(1):289-300.
44. Fusar-Poli P, Smieskova R, Kempton M, Ho B, Andreasen N, Borgwardt S. Progressive brain changes in schizophrenia related to antipsychotic treatment? A meta-analysis of longitudinal MRI studies. *Neurosci Biobehav Rev.* 2013; 37(8):1680-1691.
45. Lesh TA, Tanase C, Geib BR et al. A multimodal analysis of antipsychotic effects on brain structure and function in first-episode schizophrenia. *JAMA psychiatry.* 2015; 72(3):226-234.
46. Lancaster TM, Dimitriadis SL, Tansey KE et al. Structural and Functional Neuroimaging of Polygenic Risk for Schizophrenia: A Recall-by-Genotype–Based Approach. *Schizophr Bull.* 2019; 45(2):405-414.
47. Alloza C, Blesa-Cabez M, Bastin ME et al. Psychotic-like experiences, polygenic risk scores for schizophrenia, and structural properties of the salience, default mode, and central-executive networks in healthy participants from UK Biobank. *Transl Psychiatry.* 2020; 10(1):1-13.
48. de Zwarte SM, Brouwer RM, Tsouli A et al. Running in the family? Structural brain abnormalities and IQ in offspring, siblings, parents, and co-twins of patients with schizophrenia. *Schizophr Bull.* 2019; 45(6):1209-1217.
49. Wannan CM, Cropley VL, Chakravarty MM et al. Evidence for network-based cortical thickness reductions in schizophrenia. *Am J Psychiatry.* 2019; 176(7):552-563.
50. Shahab S, Mulsant BH, Levesque ML et al. Brain structure, cognition, and brain age in schizophrenia, bipolar disorder, and healthy controls. *Neuropsychopharmacology.* 2019; 44(5):898-906.
51. Byun MS, Kim JS, Jung WH et al. Regional cortical thinning in subjects with high genetic loading for schizophrenia. *Schizophr Res.* 2012; 141(2-3):197-203.
52. Kanahara N, Sekine Y, Haraguchi T et al. Orbitofrontal cortex abnormality and deficit schizophrenia. *Schizophr Res.* 2013; 143(2-3):246-252.
53. Jirsaraie RJ, Sheffield JM, Barch DM. Neural correlates of global and specific cognitive deficits in schizophrenia. *Schizophr Res.* 2018; 201:237-242.
54. Cordova-Palomera A, Kaufmann T, Bettella F et al. Effects of autozygosity and schizophrenia polygenic risk on cognitive and brain developmental trajectories. *Eur J Hum Genet.* 2018; 26(7):1049-1059.
55. Bandeira ID, Barouh JL, Bandeira ID, Quarantini L. Analysis of the superior temporal gyrus as a possible biomarker in schizophrenia using voxel-based morphometry of the brain magnetic resonance imaging: A comprehensive review. *CNS Spectr.* 2020; 10:1-7.
56. Knöchel C, Stäblein M, Prvulovic D et al. Shared and distinct gray matter abnormalities in schizophrenia, schizophrenia relatives and bipolar disorder in association with cognitive impairment. *Schizophr Res.* 2016; 171(1-3):140-148.

57. Köse G, Jessen K, Ebdrup BH, Nielsen MØ. Associations between cortical thickness and auditory verbal hallucinations in patients with schizophrenia: A systematic review. *Psychiatry Res Neuroimaging*. 2018; 282:31-39.
58. van Tol M-J, van der Meer L, Bruggeman R, Modinos G, Knegtering H, Aleman A. Voxel-based gray and white matter morphometry correlates of hallucinations in schizophrenia: the superior temporal gyrus does not stand alone. *Neuroimage Clin*. 2014; 4:249-257.
59. Walton E, Hibar DP, van Erp TG et al. Positive symptoms associate with cortical thinning in the superior temporal gyrus via the ENIGMA Schizophrenia consortium. *Acta Psychiatr Scand*. 2017; 135(5):439-447.
60. Gaser C, Nenadic I, Volz H-P, Büchel C, Sauer H. Neuroanatomy of 'Hearing Voices': A Frontotemporal Brain Structural Abnormality Associated with Auditory Hallucinations in Schizophrenia. *Cereb Cortex*. 2004; 14(1):91-96.
61. Papiol S, Mitjans M, Assogna F et al. Polygenic determinants of white matter volume derived from GWAS lack reproducibility in a replicate sample. *Transl Psychiatry*. 2014; 4(2):e362-e362.
62. Van der Auwera S, Wittfeld K, Homuth G, Teumer A, Hegenscheid K, Grabe HJ. No association between polygenic risk for schizophrenia and brain volume in the general population. *Biol Psychiatry*. 2015; 78(11):e41-e42.
63. Oberhuber M, Hope T, Seghier ML et al. Four functionally distinct regions in the left supramarginal gyrus support word processing. *Cereb Cortex*. 2016; 26(11):4212-4226.
64. Nenadic I, Smesny S, Schlösser RG, Sauer H, Gaser C. Auditory hallucinations and brain structure in schizophrenia: voxel-based morphometric study. *Br J Psychiatry*. 2010; 196(5):412-413.
65. Caseras X, Tansey KE, Foley S, Linden D. Association between genetic risk scoring for schizophrenia and bipolar disorder with regional subcortical volumes. *Transl Psychiatry*. 2015; 5(12):e692-e692.
66. Franke B, Stein JL, Ripke S et al. Genetic influences on schizophrenia and subcortical brain volumes: large-scale proof of concept. *Nat Neurosci*. 2016; 19(3):420-431.
67. Perez SM, Lodge DJ. Convergent inputs from the hippocampus and thalamus to the nucleus accumbens regulate dopamine neuron activity. *J Neurosci*. 2018; 38(50):10607-10618.
68. Salgado S, Kaplitt MG. The nucleus accumbens: a comprehensive review. *Stereotact Funct Neurosurg*. 2015; 93(2):75-93.
69. Marsman A, Pries L-K, ten Have M et al. Do Current Measures of Polygenic Risk for Mental Disorders Contribute to Population Variance in Mental Health? *Schizophr Bull*. 2020; 46(6):1353-1362.

70. Gallagher III BJ, Jones BJ. Early-onset schizophrenia: Symptoms and social class of origin. *Int J Soc Psychiatry*. 2017; 63(6):492-497.
71. Smeets F, Lataster T, Viechtbauer W, Delespaul P, GROUP. Evidence that environmental and genetic risks for psychotic disorder may operate by impacting on connections between core symptoms of perceptual alteration and delusional ideation. *Schizophr Bull*. 2015; 41(3):687-697.
72. Dauvermann MR, Donohoe G. The role of childhood trauma in cognitive performance in schizophrenia and bipolar disorder—A systematic review. *Schizophr Res Cogn*. 2019; 16:1-11.
73. Torniainen M, Wegelius A, Tuulio-Henriksson A, Lönnqvist J, Suvisaari J. Both low birthweight and high birthweight are associated with cognitive impairment in persons with schizophrenia and their first-degree relatives. *Psychol Med*. 2013; 43(11):2361.
74. Welch KA, McIntosh AM, Job DE et al. The impact of substance use on brain structure in people at high risk of developing schizophrenia. *Schizophr Bull*. 2011; 37(5):1066-1076.
75. Luo Y, Zhang L, He P, Pang L, Guo C, Zheng X. Individual-level and area-level socioeconomic status (SES) and schizophrenia: cross-sectional analyses using the evidence from 1.9 million Chinese adults. *BMJ open*. 2019; 9(9):e026532.
76. Abush H, Ghose S, Van Enkevort EA et al. Associations between adolescent cannabis use and brain structure in psychosis. *Psychiatry Res Neuroimaging*. 2018; 276:53-64.
77. Farah MJ. The neuroscience of socioeconomic status: Correlates, causes, and consequences. *Neuron*. 2017; 96(1):56-71.
78. Paquola C, Bennett MR, Lagopoulos J. Understanding heterogeneity in grey matter research of adults with childhood maltreatment—A meta-analysis and review. *Neurosci Biobehav Rev*. 2016; 69:299-312.
79. Power RA, Verweij KJ, Zuhair M et al. Genetic predisposition to schizophrenia associated with increased use of cannabis. *Mol Psychiatry*. 2014; 19(11):1201-1204.
80. Verweij KJ, Abdellaoui A, Nivard MG et al. Genetic association between schizophrenia and cannabis use. *Drug Alcohol Depend*. 2017; 171:117-121.
81. Sallis HM, Croft J, Havdahl A et al. Genetic liability to schizophrenia is associated with exposure to traumatic events in childhood. *Psychol Med*. 2020:1-8.
82. Veling W, Counotte J, Pot-Kolder R, Van Os J, Van Der Gaag M. Childhood trauma, psychosis liability and social stress reactivity: a virtual reality study. *Psychol Med*. 2016; 46(16):3339-3348.
83. Kendler KS, Baker JH. Genetic influences on measures of the environment: a systematic review. *Psychol Med*. 2007; 37(5):615.
84. Hill WD, Hagenars SP, Marioni RE et al. Molecular genetic contributions to social deprivation and household income in UK Biobank. *Curr Biol*. 2016; 26(22):3083-3089.

85. Marioni RE, Davies G, Hayward C et al. Molecular genetic contributions to socioeconomic status and intelligence. *Intelligence*. 2014; 44:26-32.
86. Horikoshi M, Beaumont RN, Day FR et al. Genome-wide associations for birth weight and correlations with adult disease. *Nature*. 2016; 538(7624):248-252.
87. Pasmán JA, Verweij KJ, Gerring Z et al. GWAS of lifetime cannabis use reveals new risk loci, genetic overlap with psychiatric traits, and a causal effect of schizophrenia liability. *Nat Neurosci*. 2018; 21(9):1161-1170.
88. Stringer S, Minică C, Verweij KJ et al. Genome-wide association study of lifetime cannabis use based on a large meta-analytic sample of 32 330 subjects from the International Cannabis Consortium. *Transl Psychiatry*. 2016; 6(3):e769-e769.
89. Misiak B, Stramecki F, Gawęda Ł et al. Interactions between variation in candidate genes and environmental factors in the etiology of schizophrenia and bipolar disorder: a systematic review. *Mol Neurobiol*. 2018; 55(6):5075-5100.
90. Geoffroy PA, Etain B, Houenou J. Gene x environment interactions in schizophrenia and bipolar disorder: evidence from neuroimaging. *Front Psychol*. 2013; 4:136.
91. Akdeniz C, Schäfer A, Streit F et al. Sex-dependent association of perigenual anterior cingulate cortex volume and migration background, an environmental risk factor for schizophrenia. *Schizophr Bull*. 2017; 43(4):925-934.

Table 1. Descriptive statistics for demographic variables (N=18,147).

Measure	N (%) or mean \pm SD (range)
Gender	Male: 8,651 (47.67%)
Age (years)	62.78 \pm 7.46 (45 - 80)
Townsend deprivation index at recruitment (N = 18130)	-2.11 \pm 2.57 (-6.26 - 9.16)
Birth weight (Kg; N = 11960)	3.36 \pm 0.61 (0.74 – 6.78)
Childhood trauma (N = 13044)	7.69 \pm 1.42 (0 – 18)
Antipsychotic medication	No: 17,194 (94.75%) Yes: 38 (0.21%) Missing: 915 (5.04%)
Cannabis use	No: 10,556 (58.17%) Yes: 2,741 (15.10%) Prefer not to answer: 20 (0.11%) Missing: 4,830 (26.62%)

Table 2. The association between polygenic risk score for schizophrenia and brain structures.

Brain structure	N	β	SE	z	p_{uncorrected}	p_{corrected}
<i>Lobes</i>						
Cortical thickness						
Frontal lobe	18,036	-0.018	0.007	-2.760	0.006	0.040
Insula lobe	18,086	-0.016	0.006	-2.590	0.010	0.040
<i>Parcellations</i>						
Cortical thickness						
Lateral orbitofrontal	18,072	-0.025	0.007	-3.830	<0.001	<0.001
Medial orbitofrontal	18,074	-0.019	0.006	-3.030	0.002	0.028
Posterior cingulate	18,085	-0.021	0.006	-3.460	0.001	0.022
Inferior frontal	18,038	-0.026	0.006	-4.100	<0.001	<0.001
Surface area						
Supramarginal	18,073	-0.016	0.005	-3.150	0.002	0.028
Superior temporal	18,074	-0.015	0.005	-3.140	0.002	0.028
Cortical volume						
Supramarginal	18,074	-0.016	0.005	-3.190	0.001	0.022
Superior temporal	18,062	-0.018	0.005	-3.580	<0.001	<0.001

Table 3. The association between polygenic risk score for schizophrenia and brain structures, adjusted for birth weight, Townsend deprivation index, cannabis use and childhood trauma and excluding participants having used antipsychotics.

Brain structure	N	β	SE	z	p_{uncorrected}	p_{corrected}
<i>Parcellations</i>						
Surface area						
Supramarginal	8,638	-0.028	0.007	-3.910	<0.001	<0.001
Superior temporal	8,637	-0.021	0.007	-3.090	0.002	0.026
Inferior frontal	8,639	-0.022	0.008	-2.880	0.004	0.035
Cortical volume						
Inferior frontal	8,635	-0.026	0.008	-3.330	0.001	0.026