

## Neuroimaging correlates and predictors of response to repeated-dose intravenous ketamine in PTSD

Agnes Norbury, PhD<sup>1</sup>, Sarah B. Rutter, MA<sup>1</sup>, Abigail B. Collins, BA<sup>1</sup>, Sara Costi, MD<sup>1</sup>, Manish K. Jha, MD<sup>1</sup>, Sarah R. Horn, MA<sup>1</sup>, Marin Kautz, MA<sup>1</sup>, Morgan Corniquel, MA<sup>1</sup>, Katherine A. Collins, PhD, LCSW<sup>1,2</sup>, Andrew M. Glasgow, MD<sup>3</sup>, Jess Brallier, MD<sup>3</sup>, Lisa M. Shin, PhD<sup>4,5</sup>, Dennis S. Charney, MD<sup>1,6,7</sup>, James W. Murrough, MD, PhD<sup>1,6</sup>, Adriana Feder, MD<sup>1</sup>

<sup>1</sup>Department of Psychiatry, Icahn School of Medicine at Mount Sinai, New York, NY, USA

<sup>2</sup>Nathan S. Kline Institute for Psychiatric Research, Orangeburg, NY, USA

<sup>3</sup>Department of Anesthesiology, Perioperative and Pain Medicine, Icahn School of Medicine at Mount Sinai, New York, NY, USA

<sup>4</sup>Department of Psychology, Tufts University, Medford, MA, USA

<sup>5</sup>Department of Psychiatry, Massachusetts General Hospital/Harvard Medical School, Boston, MA, USA

<sup>6</sup>Department of Neuroscience, Icahn School of Medicine at Mount Sinai, New York, NY, USA

<sup>7</sup>Department of Pharmacological Sciences, Icahn School of Medicine at Mount Sinai, New York, NY, USA

Corresponding author: Adriana Feder, MD, One Gustave L. Levy Place, Department of Psychiatry, Box 1230, New York, NY 10029, USA. E-mail: [adriana.feder@mssm.edu](mailto:adriana.feder@mssm.edu)

## Abstract

Promising initial data indicate that the glutamate N-methyl-D-aspartate (NMDA) receptor antagonist ketamine may be beneficial in post-traumatic stress disorder (PTSD). Here, we explore the neural correlates of ketamine-related changes in PTSD symptoms, using a rich battery of functional imaging data (two emotion-processing tasks and one task-free scan), collected from a subset of participants of a randomized clinical trial of repeated-dose intravenous ketamine *vs* midazolam (total  $N=21$ ). In a pre-registered analysis, we tested whether changes in an *a priori* set of imaging measures were predictive of improvement in PTSD symptoms, using leave-one-out cross-validated elastic-net regression models. Improvements in PTSD severity were associated with increased functional connectivity between the ventromedial prefrontal cortex (vmPFC) and amygdala during emotional face-viewing (change score retained in model with minimum predictive error in left-out subjects, standardized regression coefficient  $[\beta]=2.90$ ). This effect was stronger in participants who received ketamine compared to midazolam (interaction  $\beta=0.86$ ), and persisted following inclusion of concomitant change in depressive symptoms in the analysis model ( $\beta=0.69$ ). Improvement following ketamine was also predicted by decreased dorsal anterior cingulate activity during emotional conflict regulation, and increased task-free connectivity between the vmPFC and anterior insula ( $\beta_s=-2.82, 0.60$ ). Exploratory follow-up analysis via dynamic causal modelling revealed that whilst improvement in PTSD symptoms following either drug was associated with decreased excitatory modulation of amygdala→vmPFC connectivity during emotional face-viewing, increased top-down inhibition of the amygdala by the vmPFC was only observed in participants who improved under ketamine. Individuals with low prefrontal inhibition of amygdala responses to faces at baseline also showed greater improvements following ketamine treatment. These preliminary findings suggest that, specifically under ketamine, improvements in PTSD symptoms are accompanied by normalization of hypofrontal control over amygdala responses to social signals of threat.

## Introduction

Emerging evidence suggests that intravenous administration of ketamine may also improve symptoms of PTSD – over and above effects on comorbid depression [1,2]. Although the mechanism by which ketamine alleviates mood and stress-related psychopathology is not fully understood, it is thought that this may include promoting synaptogenesis in the prefrontal cortex and hippocampus: thereby reversing characteristic structural deficits observed in these brain regions following chronic stress [3–7]. Further, it has been proposed that this window of increased neuroplasticity may support the (re-)learning of maladaptive associations that contribute to longer-term symptom maintenance in these disorders [8,9]. Previous studies in individuals with treatment-resistant depression suggest that improvements in depressive symptom severity following ketamine are associated with changes in neural connectivity during emotional processing (e.g., [10–12]). Dysfunction in a partially overlapping set of brain regions in response to both trauma cues and trauma-unrelated emotional stimuli has previously been identified in PTSD [13–17]: however to our knowledge no previous studies have reported neural correlates of symptom change during ketamine treatment for PTSD.

Here, we analyse a battery of neuroimaging data collected during a recent randomized clinical trial of repeated-dose ketamine *vs* midazolam for chronic, severe PTSD [2].  $N=21$  trial participants consented to provide imaging data before and after treatment, allowing us to preliminarily identify changes in neural functioning that accompany symptom improvement. Given the limited available sample size, we harnessed knowledge derived from previous functional imaging studies to define a set of candidate measures that may *a priori* be expected to be related to both experience of PTSD symptoms and ketamine-related changes in neural function. In addition to this target-driven approach, we used a statistical method appropriate for such datasets (i.e., where the number of observations is small relative to the number of measures), and pre-registered a detailed analysis plan.

Although this is an observational analysis, meaning we are unable to disambiguate whether changes in brain function following treatment are causally related to or downstream effects of changes in symptom levels, data presented here may help generate testable hypotheses regarding the mechanism of action of ketamine in PTSD. Specifically, we suggest that improvement in PTSD symptom severity following ketamine is accompanied by normalization of hypofrontal control over amygdala responses to social signals of threat – brain circuitry which has previously been implicated in extinction learning and emotional regulation. If confirmed in future studies, this finding has implications for the potential utility of combining plasticity-promoting agents such as ketamine with psychological therapies that directly encourage reconsolidation and extinction of trauma memories [8,9,18].

## Materials and Methods

### Pre-registration of analysis

A pre-registered analysis plan was deposited with the Open Science Framework (OSF) [19,20]. The point of pre-registration was approximately 2/3 of the way through imaging data collection: at this time both imaging and clinical data were unseen by the primary analyst [20]. Time-stamped pre-registration documents and analytic code used to produce all results reported here are available at the project OSF page (<https://osf.io/8bewv/>). Follow-up analyses not detailed in the pre-registered analytic plan are described below (see **Exploratory follow-up analyses**).

### Participants

Participants were individuals taking part in a randomized clinical trial of repeated-dose ketamine for chronic PTSD (NCT02397889), results of which are reported elsewhere [2]. All participants met DSM-5 criteria for PTSD and were recruited from the wider trial cohort on an *ad hoc* basis, based on their consent to take part in the scanning sessions, and MRI eligibility criteria (for full inclusion/exclusion criteria see Supplementary Material). All participants gave written consent, and the study received ethical approval from the Institutional Review Board at the Icahn School of Medicine at Mount Sinai.

### Procedures

Study procedures are outlined in **Figure 1a**. Trial participants completed an initial screening visit, then received six intravenous infusions of either ketamine (0.5mg/kg) or the active control drug midazolam (0.045mg/kg; both three infusions per week for two weeks). Participants and all research staff were blind to drug conditions. Imaging data were collected during a baseline (pre-infusion) scan session and a second post-infusion scan following at least one week of treatment (for 2/3 participants this was the day after the 4<sup>th</sup> drug or 5<sup>th</sup> infusion, and for 1/3 participants, this occurred within 48 hours of the 6<sup>th</sup> infusion, due to scheduling conflicts).

### Clinical measures

The primary clinical measure was the Clinician-Administered PTSD Scale for DSM-5 (CAPS-5; [12]), a structured clinical interview that yields a measure of total symptom severity over the past week (a composite metric of frequency and intensity for each DSM-5 PTSD symptom). Given substantial comorbidity between PTSD and depression, the Montgomery-Åsberg Depression Rating Scale (MADRS; [22]) was also administered. Both measures were administered by blinded raters, who were absent during drug infusion sessions (and therefore unexposed to differences in subjective reaction to study drugs between participants). Information about psychotropic medication status and current self-medication with marijuana or cannabis derivatives was also recorded (see Supplementary Material).

### Drug side-effect measures

Clinician-rated dissociative, psychotomimetic, and manic effects [23–25] and patient-rated somatic effects [26] were included in the analysis of symptom change data, in order to account for potential

functional unblinding of ketamine vs midazolam, or non-specific effects related to the magnitude of psychoactive reaction to either drug [27,28] (see Supplementary Material).

### Neuroimaging data

On each imaging session, a T1-weighted structural and three T2\*-weighted functional imaging runs were collected. Functional runs consisted of: 1) an emotional face-processing task [29]; 2) an emotional conflict regulation ('face Stroop') task [30]; and 3) a 12-minute eyes-open task-free ('resting state') scan (**Figure 1c**).

**Data acquisition.** Imaging data were acquired using a 3T Siemens Biograph mMR scanner (Siemens Healthcare) with 64-channel head coil. T2\*-weighted images were collected using an echoplanar imaging (EPI) sequence (TR=2000ms, TE=0.027ms, flip angle=90°, slices per volume=38, voxel size 2×2×2mm). The T1-weighted structural scan used an MPRAGE sequence (voxel size 1×1×1mm).

**Pre-processing.** Imaging data were pre-processed using fMRIprep, version 1.1.4 [31,32]. Briefly, images were slice-time corrected, spatially normalized, and smoothed with an isotropic Gaussian kernel of 6mm FWHM, followed by non-aggressive independent components analysis (ICA-AROMA) denoising [33] and re-sampling to standard MNI space (for full details see Supplementary Material).

**First level analysis.** First level models were specified using SPM12 (Wellcome Trust Centre for Neuroimaging, 2014), run in MATLAB, version R2019a. For the emotional face-processing task, onsets of emotional faces and comparison shape-judgement trials were modelled separately. For the emotional conflict regulation task, onsets of incongruent and congruent trials (defined on the basis of consistency between background image and foreground text meaning) were modelled. Primary contrasts of interest were faces>shapes and incongruent>congruent trials, respectively. For both tasks, erroneous responses were also modelled, with onsets at the time of response. Nuisance regressors describing mean time-series and spatially-coherent noise components in white matter and cerebrospinal fluid [34], plus outlier volumes based on movement and intensity traces [35] were included in all first level models (see Supplementary Material).

**Target circuit definition.** Due to our relatively small sample size, we decided to restrict our analysis to measures drawn from an *a priori* target circuit, defined on the basis of previous task-based functional imaging studies in individuals with PTSD ([13–16]; see [17] for a recent meta-analysis). This target network consisted of the ventromedial prefrontal cortex (vmPFC), rostral and dorsal anterior cingulate cortices (rACC and dACC), anterior insula, amygdala (AMG), and anterior hippocampus (aHC) (**Figure 1d**). Notably, signal changes in or between several of these brain regions during emotional processing tasks have been also identified following intravenous ketamine in healthy volunteers and individuals with treatment-resistant depression [10–12,36].

**Mask definition.** Masks for anatomically well-defined regions of interest (ROIs) (AMG, anterior insula) were generated using the Neuromorphometrics maximum probability tissue label atlas distributed with SPM12. Functionally-defined ROIs (vmPFC, rACC, dACC, aHC) were generated from consensus maps using Neurosynth [37] (see Supplementary Material).

**Derivation of imaging measures.** For each functional scan, a pre-defined set of imaging measures (mean regional BOLD signal, covariation in time series or functional connectivity between regions, and/or multivariate representational similarity across voxels within a region) were extracted. Briefly, mean BOLD signal estimates across ROIs were extracted from the contrast of interest for each first level model using MarsBaR [38]; task-specific ROI-ROI covariances or functional connectivity estimates were generated via generalized psychophysiological interaction (gPPI) analysis using the CONN toolbox [39]; and multivariate representational similarity metrics (linear discriminant contrast estimates) were generated using the RSA toolbox [40], run in MATLAB (see Supplementary Material).

The full set of imaging measures submitted to further analysis is listed in **Figure 1c**. In order to further limit chance of Type 1 error related to across- or within-subjects differences in motion during scan sessions (which may covary effects of interest, e.g., clinical severity; [31,27]), derived imaging measures were first regressed against mean framewise displacement (head movement) recorded during the relevant functional scan. Residuals from these regressions were then passed on to further analysis (*NB*, in the absence of a relationship between within-scan motion and a given imaging metric, the rank ordering of individual estimates should be unaffected by this process; see e.g., [43]). For clarity, all bivariate plots presented in the Results depict ‘raw’ (un-regressed/unimputed) values.

### Statistical analysis

Further analysis was carried out in R, version 3.6.1 (R Core Team, 2019). Imaging measures and other relevant sociodemographic variables were related to change in PTSD symptom severity following treatment using elastic net regression [44], as implemented in the R package *glmnet*, version 3.0-2 [45]. Elastic net is a form of penalized regression which balances LASSO (or L1-norm) penalization [46], which forces small effects to zero, with ridge (or L2-norm) penalization, which shrinks effects towards the null and deals better with multicollinearity among (sets of) predictors [47]. As such, it is able to cope relatively well with situations where the number of observations is small with respect to the number of measurements, and where measurements are interrelated [44].

Parameters governing balance between L1 and L2-norm penalization ( $\alpha$ ) and degree of regularization applied ( $\lambda$ ) were chosen via grid search and a leave-one-(subject)-out cross-validation (LOOCV) procedure. Specifically, parameter values defining the winning model were chosen so as to minimize error when predicting the target variable in left-out subjects (minimum mean squared error [MSE] model), a process designed to guarding against over-fitting. Under a prediction framework, retention in the minimum MSE model implies that values of a particular variable may be useful in estimating the target variable (here, change in PTSD symptom severity following treatment) – although there is no inference on significance *per se* [48].

The first analysis related *changes* in imaging measures to changes in CAPS-5 total scores following treatment, in order to identify correlates of symptom change. The second analysis related *baseline values* of imaging measures and other variables to changes in CAPS-5 scores, in order to identify predictors of treatment response. In both cases, a set of nested models was constructed: the first



examining at predictors of symptom change across all subjects (drug-agnostic analysis), and the second including interaction terms between imaging measures and a dummy variable encoding received drug identity ([0,1] for midazolam *vs* ketamine), in order to identify effects that were stronger in individuals who received ketamine. A third model also included changes in depressive symptoms (MADRS total scores) following treatment, in order to attempt to identify predictors specific to cardinal PTSD symptomatology (but see below).

All models included a set of demographic and clinical measures that may potentially confound imaging or symptom change metrics, specifically: age, gender identity, self-reported education level, concurrent use of stable doses of psychotropic medication, urine toxicology tetrahydrocannabinol (THC) results, four drug side-effects measures (indexing dissociative, psychotomimetic, manic, and somatic effects), and baseline PTSD severity (CAPS-5 total score). The baseline prediction model also included several other variables which have been previously related to clinical response to ketamine or resilience to trauma-related psychopathology in general, specifically: self-reported income, perceived social support, cognitive test (CogState battery) performance, history of alcohol use disorder in first degree relatives, and dissociative symptoms during the first infusion (see Supplementary Material). All predictors were scaled (z-scored) prior to entering into the prediction models, yielding standardized regression ( $\beta$ ) weights. Symptom change scores were positively framed (calculated as baseline minus outcome visit scores), in order to aid interpretability of model output. Further information regarding sample size, missing data, and deviations from the pre-registered analysis plan is available in the Supplementary Material.

**Exploratory follow-up analyses.** As PTSD is a heterogenous disorder [49,50], exploratory follow-up analyses were conducted to examine how strongly changes in imaging metrics were related to changes in different PTSD symptom dimensions, as defined by Armour et al., [49,51]. Given the considerable conceptual overlap between some dimensions (e.g., negative affect, anhedonia) and symptoms of depression, this may be a cleaner way of examining specificity of effects to different aspects of PTSD symptomatology than our pre-registered plan of attempting to remove variance related to change in total depression severity (MADRS) score.

In order to gain insight into the directionality of functional connectivity effects identified in the main analysis, follow-up effective connectivity analysis was carried out via dynamic causal modelling (DCM) [52]. Specifically, changes in effective connectivity between pre- and post-infusion imaging sessions that were related to change in PTSD symptoms over the course of treatment, and interactions of these changes with the factor of drug (ketamine *vs* midazolam), were identified using hierarchical Parametric Empirical Bayes (PEB) analysis [53–55] (see Supplementary Material).

## Results

### Study participants and clinical measures

Study participants are described in **Table 1**. Participants had severe, chronic PTSD (mean baseline CAPS-5 score of 37, mean duration 17 years). The majority of participants were women, and the most common primary trauma was sexual violence, followed by other forms of interpersonal

violence or abuse. Improvements in PTSD and depressive symptoms over the course of treatment were observed in individuals who received both midazolam ( $N=10$ ) and ketamine ( $N=11$ ); however, greater improvement was observed in the ketamine group: both in the wider clinical trial [2] and the imaging subsample (significant time\*drug interaction on CAPS-5 and MADRS total scores in repeated-measures ANOVA with factors of drug, session, and measure;  $F_{1,57}=6.58$ ,  $p=0.013$ ; **Figure 1b**). In general, response accuracy and timing on the emotion-processing tasks did not vary according to imaging session or received drug (Supplementary Results; **Figure S1**). Distributions of clinical outcome and side-effects variables, and correlation matrices depicting relationships between variables, are available in the Supplementary Material (**Table S1**; **Figure S2,7**).

### **Neuroimaging correlates of PTSD symptom improvement**

Across all study participants, the strongest correlate of improvement in PTSD symptom severity retained in the minimum MSE model was increased functional connectivity between the vmPFC and AMG during emotional face-viewing (standardized regression weight [ $\beta$ ]=2.90). Increases in rACC BOLD during negative emotional conflict regulation, and greater task-free (resting) connectivity between the rACC and anterior insula were also retained in the model ( $\beta$ s=0.97, 0.68, respectively) (**Figure S3**). When interactions between drug and imaging measures were entered into the model, the interaction term between drug and vmPFC-AMG connectivity during emotional face-viewing was also retained: indicating a stronger effect in individuals who received ketamine ( $\beta=0.86$ ; **Figure 2a,b**). Interactions between drug and dACC BOLD during emotional conflict regulation, and task-free vmPFC-anterior insula connectivity were also retained ( $\beta$ s=-2.82, 0.60). Inspection of bivariate correlation plots revealed that improvements in PTSD symptom severity were associated with decreased dACC BOLD during emotional conflict and increased resting vmPFC-anterior insula connectivity, only in individuals who received ketamine (**Figure 2c,d**). In a follow-up analysis which included concurrent change in depressive symptom severity (MADRS total score), the overall effect of increased vmPFC-AMG connectivity during emotional face-viewing and the interaction of drug with decreased dACC BOLD during emotional conflict regulation were retained in the minimum MSE model ( $\beta$ s=0.69, -0.33) – suggesting some specificity of these effects to improvement in cardinal PTSD symptoms (**Figure S4**).

**Exploratory follow-up analysis by PTSD symptom dimension.** An exploratory follow-up analysis was carried out to investigate how changes in the measure most consistently identified across models as a correlate of overall symptom improvement (face-related vmPFC-AMG connectivity) were related to changes in symptoms across different PTSD symptom dimensions. Increased vmPFC-AMG coherence during viewing of emotional faces was most strongly related to improvement in re-experiencing, avoidance, and anxious arousal symptoms ( $r$ s=0.53, 0.55, 0.56, respectively) – with weaker relationships to improvement in negative affect, anhedonia, externalizing behaviour, and dysphoric arousal symptom dimensions ( $r$ s=0.19–0.45; **Figure S5**). There was no evidence of a relationship between number of infusions received at the time of the post-infusion scan and pre-post change in vmPFC-AMG connectivity during emotional face-viewing (Spearman's  $\rho=-0.06$ ,  $p>0.5$ ; **Figure S6**).



**Exploratory follow-up analysis via Dynamic Causal Modelling.** Effective connectivity analysis was next used to explore the directionality of vmPFC-AMG connectivity changes over the course of treatment associated with PTSD symptom improvement. When considering data only from the pre-infusion (baseline) session, PEB analysis of mean effective connectivity across participants revealed strong evidence that the onset of emotional face stimuli modulated the AMG→vmPFC pathway towards an excitatory connection (posterior estimate [Ep]=0.89, posterior probability [Pp]=1.00), with weaker evidence for face-induced inhibition of the AMG by the vmPFC (Ep=-0.18, Pp=0.81) (**Figure 3a; Table S2**). When considering data from both pre and post-infusion sessions (regardless of drug received), 2<sup>nd</sup> level PEB analysis revealed that greater improvements in PTSD symptom severity over the course of treatment were associated with shifts towards lesser face-related excitation in the AMG→vmPFC pathway (Ep=-0.022, Pp=0.98), and greater face-related inhibition in the vmPFC→AMG pathway (Ep=-0.052, Pp=1.00), post *vs* pre-treatment (**Figure 3b; Table S3**). When separated by drug, there was evidence for an association between greater symptom improvement and lower face-related excitation of the vmPFC by the AMG in individuals who received both midazolam and ketamine (Ep=-0.019, -0.031, Pp=0.94, 1.00; respectively). However, the relationship between PTSD symptom improvement and greater top-down inhibition of the AMG by the vmPFC was only evident in the ketamine group (Ep=0.004, -0.091, Pp=0.60, 1.00) (**Figure 3c; Table S3**). Formal comparison between drug conditions via passing the two models to a 3<sup>rd</sup> level PEB analysis revealed evidence of a stronger effect of increased vmPFC→AMG inhibition on symptom improvement in individuals who received ketamine (Ep=-0.047, Pp=0.98; **Table S4**).

### **Baseline prediction of PTSD symptom improvement**

A second set of analyses examined whether any of the candidate set of baseline measurements were reliably predictive of symptom improvement following treatment. Across all study participants, the strongest predictor of clinical response (greater PTSD symptom improvement) was lower baseline vmPFC-AMG connectivity during the emotional face-viewing task ( $\beta=-6.03$ ; **Figure S8**). Moderate-to-large effects were also observed for lower baseline rACC BOLD during both emotional face-viewing and emotional conflict regulation tasks ( $\beta_s=-4.83, -1.30$ ; **Figure 4b**), and in individuals with more distinct representation of fearful vs neutral faces across rACC voxels ( $\beta=1.35$ ; **Figure 4c**). Small predictive effects were retained for clinical variables related to baseline clinical severity (pre-infusion CAPS-5 total score, and concurrent use of psychotropic medication or cannabis;  $\beta_s=0.15, 0.62, 0.56$ ), which likely reflect a regression to the mean effect (tendency for greater improvement at follow-up in individuals with more extreme values at baseline, [56,57]; there was no evidence that baseline vmPFC-AMG face-related connectivity was related to baseline PTSD severity,  $r=0.04$ ). Other small effects retained in the minimum MSE model are not discussed further here, given the likelihood that these may reflect over-fitting (total model  $r^2=0.857$ ).

When interactions between drug and imaging measures were entered into the model, the interaction between drug and face-related vmPFC-AMG connectivity was retained (**Figure 4a**), providing evidence of a stronger relationship between baseline connectivity and PTSD symptom improvement in individuals who went on to receive ketamine ( $\beta=-4.15$ ; **Figure 4d**). When change in MADRS

score was included in the model, the interaction between drug and face-related vmPFC-AMG connectivity was retained ( $\beta=-5.21$ ; **Figure S9**), indicating some specificity in predicting improvements in cardinal PTSD symptoms, in particular in individuals who went on to receive ketamine.

Exploratory follow-up analysis of baseline effective connectivity data revealed that, across all participants, greater improvement over the course of treatment was associated with lower baseline inhibition of the AMG by the vmPFC ( $E_p=0.05$ ,  $P_p=1.00$ ), and greater baseline excitement of the vmPFC by the AMG, during viewing of emotional face stimuli ( $E_p=0.02$ ,  $P_p=0.98$ ; **Table S5**). Examining PEB results for each drug group separately revealed that the AMG→vmPFC effect was present in both groups ( $E_p=0.046$ ,  $0.0229$ ,  $P_p=1.00$ ,  $0.99$ ) – but that the relationship between ineffective baseline vmPFC inhibition of the AMG and treatment response was only evident in individuals who went on to receive ketamine ( $E_p=0.011$ ,  $0.091$ ,  $P_p=0.71$ ,  $0.99$ ; **Table S6**). Formal comparison of drug conditions by passing to a 3<sup>rd</sup> level PEB analysis revealed evidence of a stronger effect of baseline vmPFC→AMG connectivity in predicting response in the ketamine group ( $E_p=0.040$ ,  $P_p=0.95$ ; **Table S4**). Specifically, participants who responded better to ketamine tended to lack inhibitory modulation of the AMG by the vmPFC in response to emotional stimuli at baseline (or show abnormal excitatory modulation of this connection; see Discussion); conversely, those who were already able to harness vmPFC inhibition of the AMG during emotional face-viewing showed less improvement following treatment (**Figure S10**).

## Discussion

Here, we provide preliminary evidence of changes in functional imaging measures of brain activity associated with improvement in overall PTSD symptom severity in individuals undergoing treatment with repeated-dose intravenous ketamine or midazolam. In a sample of individuals with severe, chronic PTSD, the most reliably identified predictor of symptom improvement across models was increased functional connectivity between the AMG and vmPFC during viewing of emotional face stimuli. Increased emotion-related vmPFC-AMG coherence was the strongest correlate of symptom change across all subjects – with evidence of a stronger effect in individuals who received ketamine, and some specificity to reduction in cardinal PTSD symptoms (i.e., over and above concomitant decreases in depressive symptoms; **Figure S3**, **Figure 2**, **Figure S4**).

This finding is consistent with a body of evidence from previous imaging studies of PTSD and other trauma-exposed groups: specifically, that individuals with PTSD may exhibit hypoactive prefrontal and hyperactive AMG responses to trauma cues and trauma-unrelated emotional stimuli [13–17]; that differences in prefrontal-AMG function are implicated in and predictive of resilient outcomes following trauma exposure [58–60]; and that increases in vmPFC-AMG resting functional connectivity are observed during trials of the current gold standard treatment for PTSD, prolonged exposure therapy [55,61]. Follow-up analysis via dynamic causal modelling indicated that whilst responders in both drug conditions showed decreased excitatory influence from the AMG to the vmPFC in response to emotional faces (perhaps representing a common anxiolytic effect of

treatment), greater top-down vmPFC inhibition of the AMG during emotional face viewing was uniquely involved in PTSD symptom reduction under ketamine (**Figure 3**). As emotional faces (particularly fearful, angry, and surprised expressions) can be considered social signals of danger – especially in individuals traumatized by interpersonal violence [62] – this could be interpreted as representing decreased threat-responsivity in treatment responders (via both common and drug-specific neural mechanisms).

Indeed, there is a striking overlap between the brain circuitry associated here with response to ketamine, and neural mechanisms identified as central to successful extinction learning in preclinical models and human studies [63–68]. Although the mechanism of action of ketamine in humans is incompletely understood, it has been proposed that it may help remediate mood and stress-related symptoms by opening a ‘window of plasticity’ that promotes re-learning of maladaptive associations that may contribute to these symptoms, via increasing neurogenesis in brain regions negatively impacted by chronic stress – in particular in the medial prefrontal cortex [3,4,8,5–7]. Consistent with this hypothesis, preclinical evidence suggests that under some conditions administration of ketamine improves fear extinction learning in rodents [69–71]. It is therefore possible that extinction of maladaptive fear responses related to trauma memories may contribute to symptom improvement in individuals who responded to ketamine [7,9]. In trial participants’ own words when discussing their trauma, “I made peace, I could go past it, I could, can let it go”; “Before, talking about it used to make me feel a terrible feeling...[but now] I have to dig out the memory as if from an attic” [2]. This interpretation is consistent with our exploratory finding that changes in vmPFC-AMG connectivity were most strongly related to improvements in prototypical PTSD symptoms (re-experiencing, anxious arousal, and avoidance), and less strongly related to changes in low mood/motivational symptoms that are also part of PTSD (**Figure S5**).

Finally, the baseline prediction analysis indicated that, across all participants, the strongest predictor of PTSD symptom improvement over the course of treatment was lower baseline vmPFC-AMG connectivity during emotional face-viewing (**Figure S8**). Lower pre-infusion vmPFC-AMG coherence in response to faces was particularly associated with response to ketamine, and to improvement in cardinal PTSD symptoms in participants who went on to receive ketamine (**Figure 4, Figure S9**). Follow-up analysis suggested that greater overall PTSD symptom reduction following ketamine was associated with lower baseline vmPFC inhibition of AMG during viewing of emotional stimuli (**Figure S10**). Of note, hypofrontal regulation of the AMG in response to emotional face stimuli has previously been observed in other anxiety disorder samples [72,73], and under task-free conditions in non-dissociative PTSD [74,75]. Greater response to either treatment was also predicted by lower baseline rACC activity during both emotional face-viewing and emotional conflict regulation tasks (which has previously been interpreted as reflecting poorer regulation of emotional responses in PTSD samples, [30]), and more disparate representation of fearful *vs* neutral faces in the rACC. The latter finding may represent hyper-sensitivity to social signals of threat [76] and/or a signature related to long-term fear learning – as greater representational differentiation between fear and non-fear-associated stimuli in a network of brain regions including the ACC has previously been demonstrated to be predictive of future fear memory retention [77]. Together, these measures may be reflective of a type of PTSD that is more likely to

respond to this form of treatment: i.e., one that is primarily related to more abnormal function in brain circuitry subserving extinction learning and threat responsivity – although this hypothesis needs to be confirmed by further investigation.

Strengths of the work presented here include highly novel data (the first presentation to our knowledge of changes in brain function during ketamine treatment for PTSD), collected during a rigorously controlled randomized clinical trial, with detailed clinical and drug side-effects measures available for all participants. We attempted to leverage previous knowledge gained from imaging studies of PTSD by focusing our analysis on an *a priori* target circuit of relevant regions and connections, as specified in a pre-registered analysis plan. Further, the directionality of effects identified here converges with those identified during previous PTSD treatment studies [55,61].

The major limitation of this work stems from this being a small pilot study, as ketamine is still in the development stage as a therapy for PTSD. A small sample size means that our analyses are likely to be underpowered for small-to-moderate effect sizes, although they should be adequately powered to detect moderate-to-large effects (per the Supplementary Material, we should be able to detect a bivariate  $r$  of 0.55 and above at  $N=21$  with 80% power: for the relationship between PTSD symptom improvement and change in vmPFC-AMG connectivity,  $r=0.54$ ; for the relationship with vmPFC-AMG baseline connectivity,  $r=0.51$ ). We urge particular caution when interpreting results from emotion regulation (face Stroop) task, given almost 20% imputed data for this measure. Recent work has also highlighted that mean univariate BOLD measures derived from emotional processing tasks (including the emotional face-viewing task employed here) may exhibit poor within-subject reliability, particularly for subcortical regions [78–80]. Whilst there is some evidence that reliability may be greater for both PPI functional connectivity estimates [81] and multivariate similarity measures [82,83], it is important to note that measurement reliability fundamentally limits the ability to detect true between-subjects effects in our data. Overall, we believe that these findings should be considered as preliminary, as a basis for hypothesis-generation and confirmation in independent datasets, when these become available.

In summary, improvement in PTSD symptom severity over the course of treatment was related to connectivity changes between regions previously identified as showing abnormal activity in PTSD (specifically, the vmPFC, AMG, d/rACC, and anterior insula). These changes were primarily observed during processing of socio-emotional stimuli (emotional faces), which may be considered as signals of potential threat in individuals traumatized by interpersonal violence. We provide preliminary evidence for a drug-specific mechanism underlying vmPFC-AMG connectivity changes following treatment: i.e., that improvement under both midazolam and ketamine was related to decreased AMG→vmPFC excitation during processing of socio-emotional stimuli, but that only improvement under ketamine was associated with increased top-down inhibition of the AMG by the vmPFC under these conditions. We propose that enhancement of fear extinction learning and associated down-regulation of threat responses might contribute to decreases in the severity of prototypical PTSD symptoms following ketamine – learning that may be supported by increased neurogenesis in the medial prefrontal cortex. This may help explain the greater rate of response, and longer time to relapse, in individuals who received ketamine vs the anxiolytic midazolam [2]. This

interpretation is in line with increasing evidence that successful treatments for mood and stress-related disorders are both pharmacological and psychological in nature: i.e., that effective drugs ‘open a window’ for re-learning of ingrained cognitive biases or maladaptive fear memories [84–86,9]. Future work should therefore explore the potential of combining ketamine with adjunct treatments that directly target extinction learning (e.g., psychological therapies with an element of imagined re-exposure), in order to test if this might improve response rates or result in longer maintenance of treatment response for this chronic, debilitating disorder [8,18].



## Funding and Disclosures

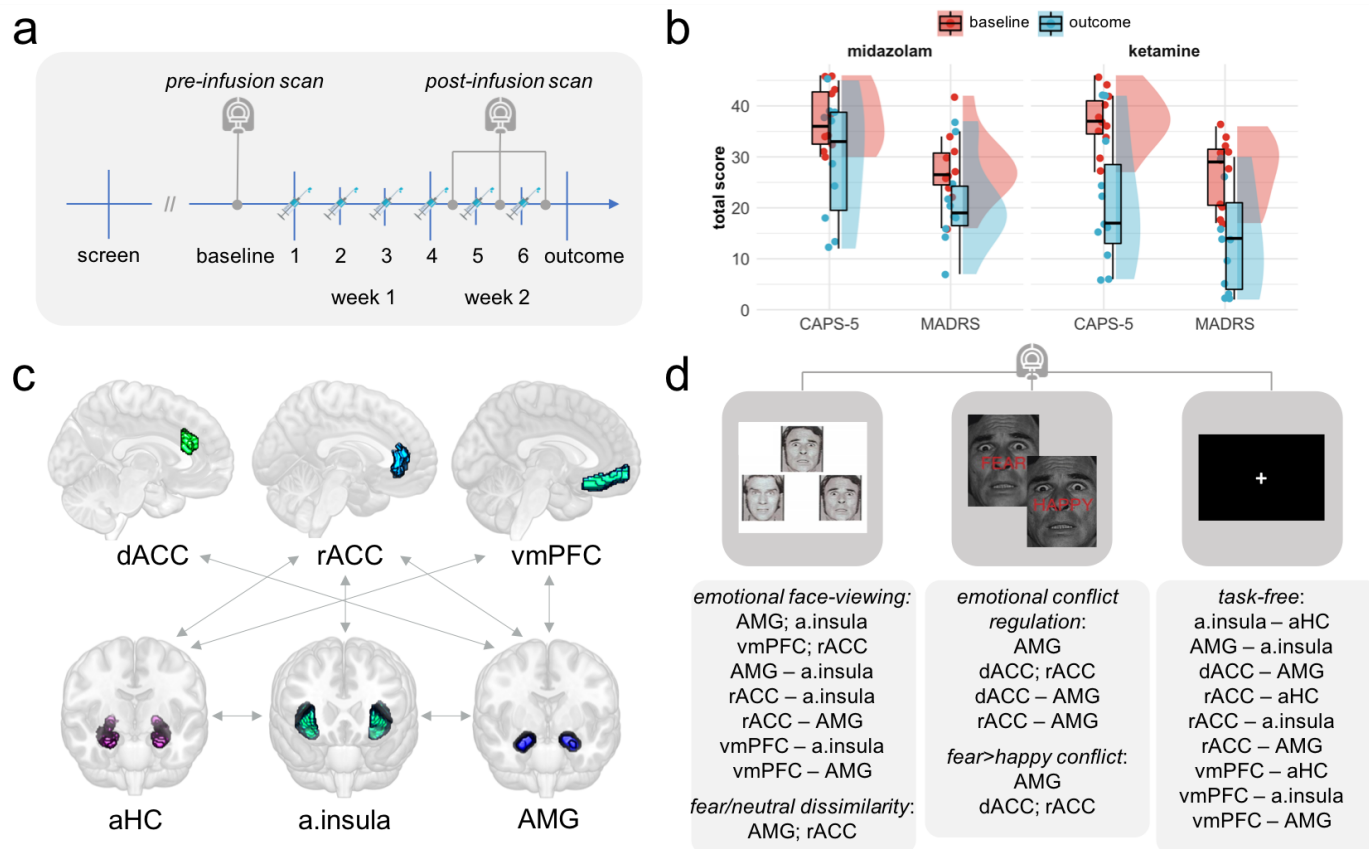
This work was supported by an Independent Investigator Award from the Brain and Behavior Research Foundation to AF (grant number 23144), Technology Development Awards from Mount Sinai Innovation Partners and the Mount Sinai i3 Accelerator, and a donation from Mr. Gerald Greenwald and Mrs. Glenda Greenwald. Additional funding was provided by the Ehrenkranz Laboratory for Human Resilience, a component of the Depression and Anxiety Center for Discovery and Treatment at Icahn School of Medicine at Mount Sinai.

Drs. Feder and Charney are named co-inventors on a patent application in the US, and several issued patents outside the US, filed by the Icahn School of Medicine at Mount Sinai (ISMMS) related to the use of ketamine for the treatment of PTSD. This intellectual property has not been licensed. Dr. Jha has received contract research grants from Acadia Pharmaceuticals and Janssen Research & Development, educational grant to serve as Section Editor of the Psychiatry & Behavioral Health Learning Network, consultant fees from Eleusis Therapeutics US, Inc, and honoraria for CME presentations from North American Center for Continuing Medical Education and Global Medical Education. Dr. K. Collins is a paid independent rater for Medavante-Prophase. In the past 5 years, Dr. Murrough has provided consultation services and/or served on advisory boards for Allergan, Boehringer Ingelheim, Clexio Biosciences, Fortress Biotech, FSV7, Global Medical Education (GME), Novartis, Otsuka, Sage Therapeutics, and Engrail Therapeutics. Dr. Murrough is named on a patent pending for neuropeptide Y as a treatment for mood and anxiety disorders and on a patent pending for the use of KCNQ channel openers to treat depression and related conditions. The ISMMS (employer of Dr. Murrough) is named on a patent and has entered into a licensing agreement and will receive payments related to the use of ketamine or esketamine for the treatment of depression. The ISMMS Medicine is also named on a patent related to the use of ketamine for the treatment of PTSD. Dr. Murrough is not named on these patents and will not receive any payments. Dr. Charney is named as co-inventor on patents filed by the ISMMS relating to the treatment for treatment-resistant depression, suicidal ideation and other disorders. ISMMS has entered into a licensing agreement with Janssen Pharmaceuticals, Inc. and it has and will receive payments from Janssen under the license agreement related to these patents for the treatment of treatment-resistant depression and suicidal ideation. Consistent with the ISMMS Faculty Handbook (the medical school policy), Dr. Charney is entitled to a portion of the payments received by the ISMMS. Since SPRAVATO has received regulatory approval for treatment-resistant depression, ISMMS and thus, through the ISMMS, Dr. Charney, will be entitled to additional payments, beyond those already received, under the license agreement. Dr. Charney is a named co-inventor on several patents filed by ISMMS for a cognitive training intervention to treat depression and related psychiatric disorders. The ISMMS has entered into a licensing agreement with Click Therapeutics, Inc. and has and will receive payments related to the use of this cognitive training intervention for the treatment of psychiatric disorders. In accordance with the ISMMS Faculty Handbook, Dr. Charney has received a portion of these payments and is entitled to a portion of any additional payments that the medical school might receive from this license with Click Therapeutics. Dr. Charney is a named co-inventor on a patent application filed by the ISMMS for the use of intranasally administered Neuropeptide Y (NPY) for the treatment of mood and anxiety disorders. This intellectual property has not been licensed. The other authors declare no conflicts of interest.



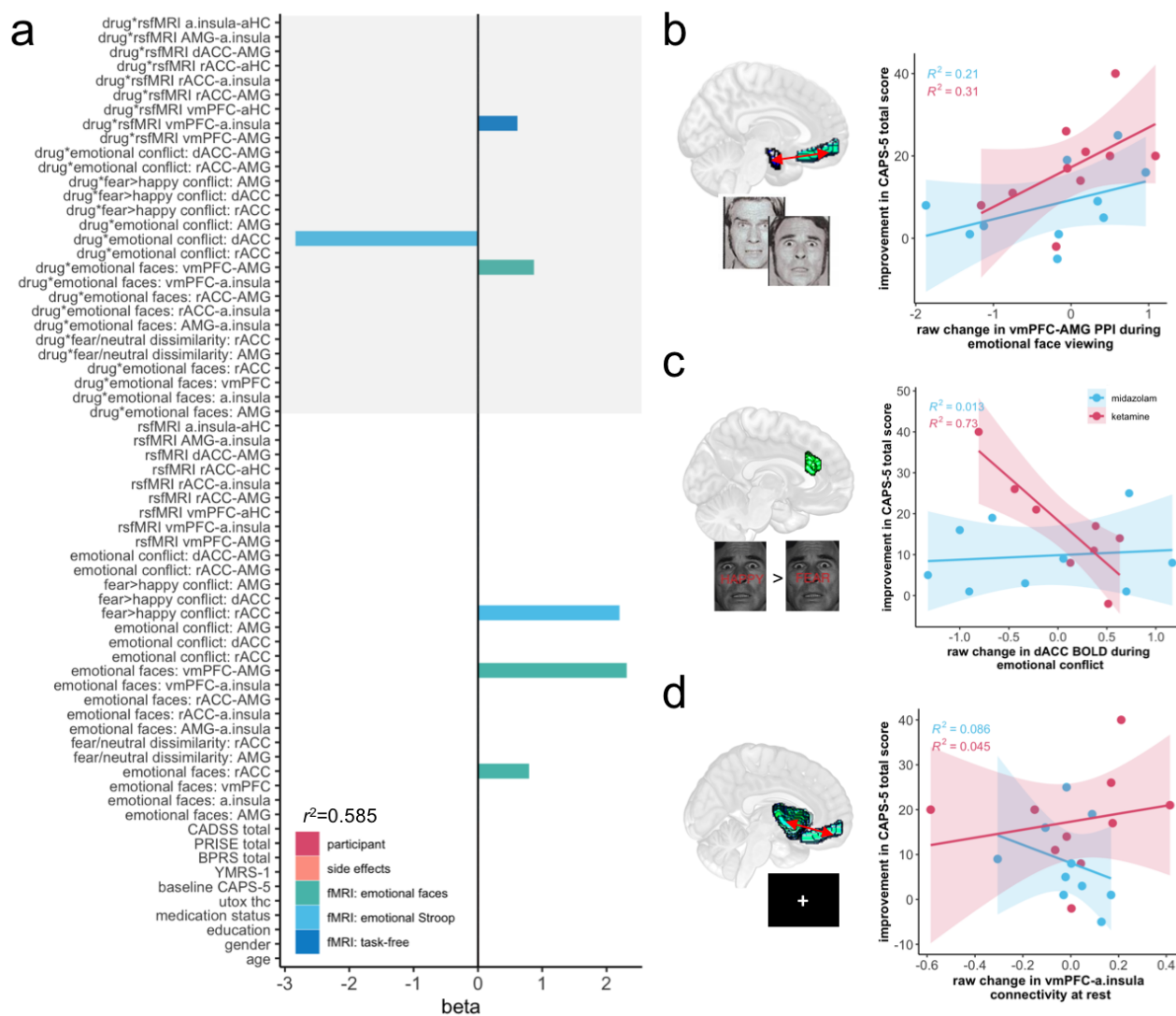
Age (years)	42.4 (13.0)
Gender ( <i>N</i> female, other, or non-binary)	18 (86%)
Race ( <i>N</i> )	
Black or African American	3 (14%)
Asian	4 (19%)
White or Caucasian	10 (48%)
Other	4 (19%)
Ethnicity ( <i>N</i> )	
Hispanic/Latinx	6 (29%)
Education level ( <i>N</i> )	
High school graduate	2 (10%)
Some college or trade school	6 (29%)
Graduated 4-year college	6 (29%)
>4 years college or professional school	7 (33%)
Baseline CAPS-5 (past week) total score	37.4 (5.8)
Baseline MADRS (past week) total score	27.4 (6.7)
PTSD duration (years)	17.4 (14.8)
Primary (index) trauma ( <i>N</i> )	
Sexual violence	9 (43%)
Physical violence or abuse	7 (33%)
Witnessed violence or death; combat exposure	5 (24%)
Medication status ( <i>N</i> )	
Psychotropic medication (stable dose)	11 (52%)
Marijuana or cannabis derivative use	3 (14%)
Psychological treatment status ( <i>N</i> )	
Currently receiving talk therapy or counselling	10 (48%)

**Table 1. Summary of demographic and clinical variables for study participants (*N*=21).** Values represent mean (SD) unless otherwise specified. Low-frequency gender/racial identities and index trauma types were collapsed into other categories, in order to preserve participant privacy. CAPS-5, Clinician-Administered PTSD Scale for DSM-5 (a measure of past-week PTSD symptom severity); MADRS, Montgomery-Åsberg Depression Rating Scale (a measure of past-week depressive symptom severity).

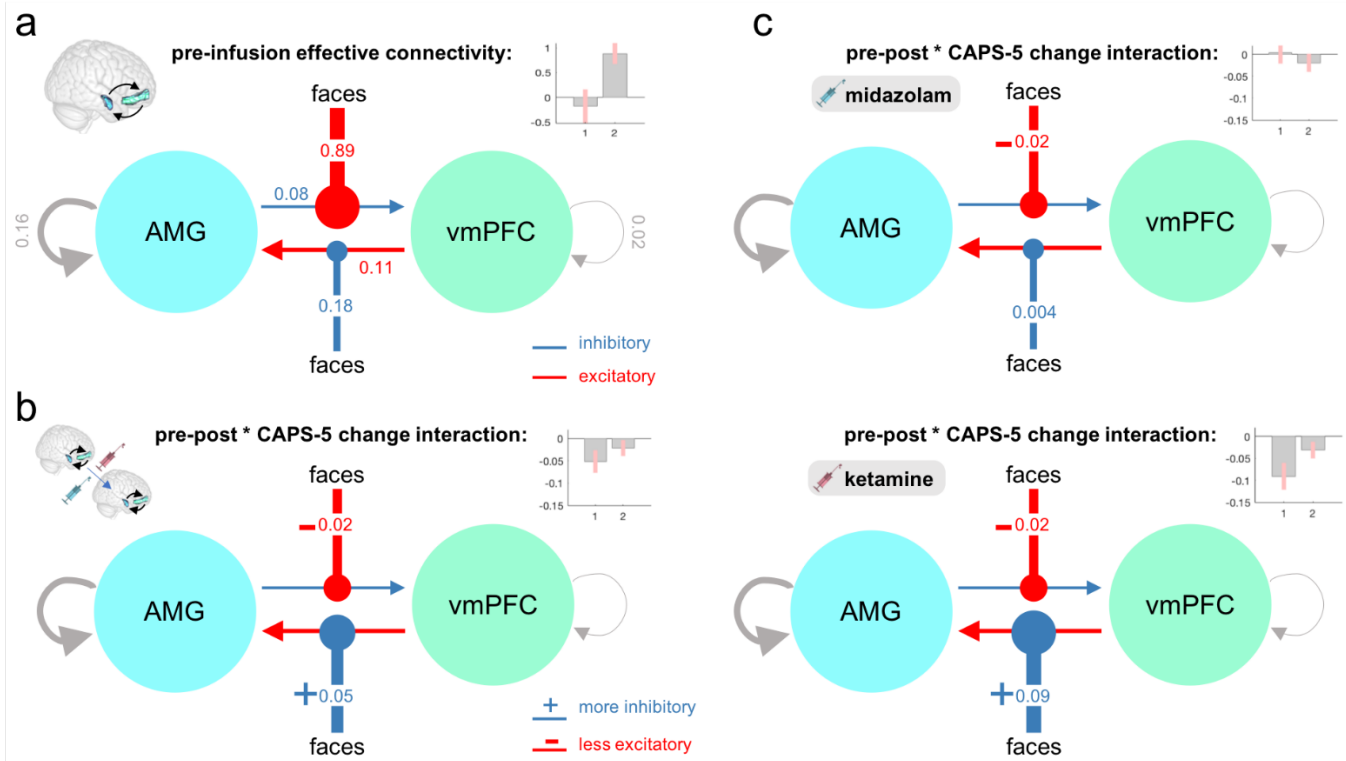


**Figure 1. Description of study procedures, clinical measures, and functional imaging measures.**

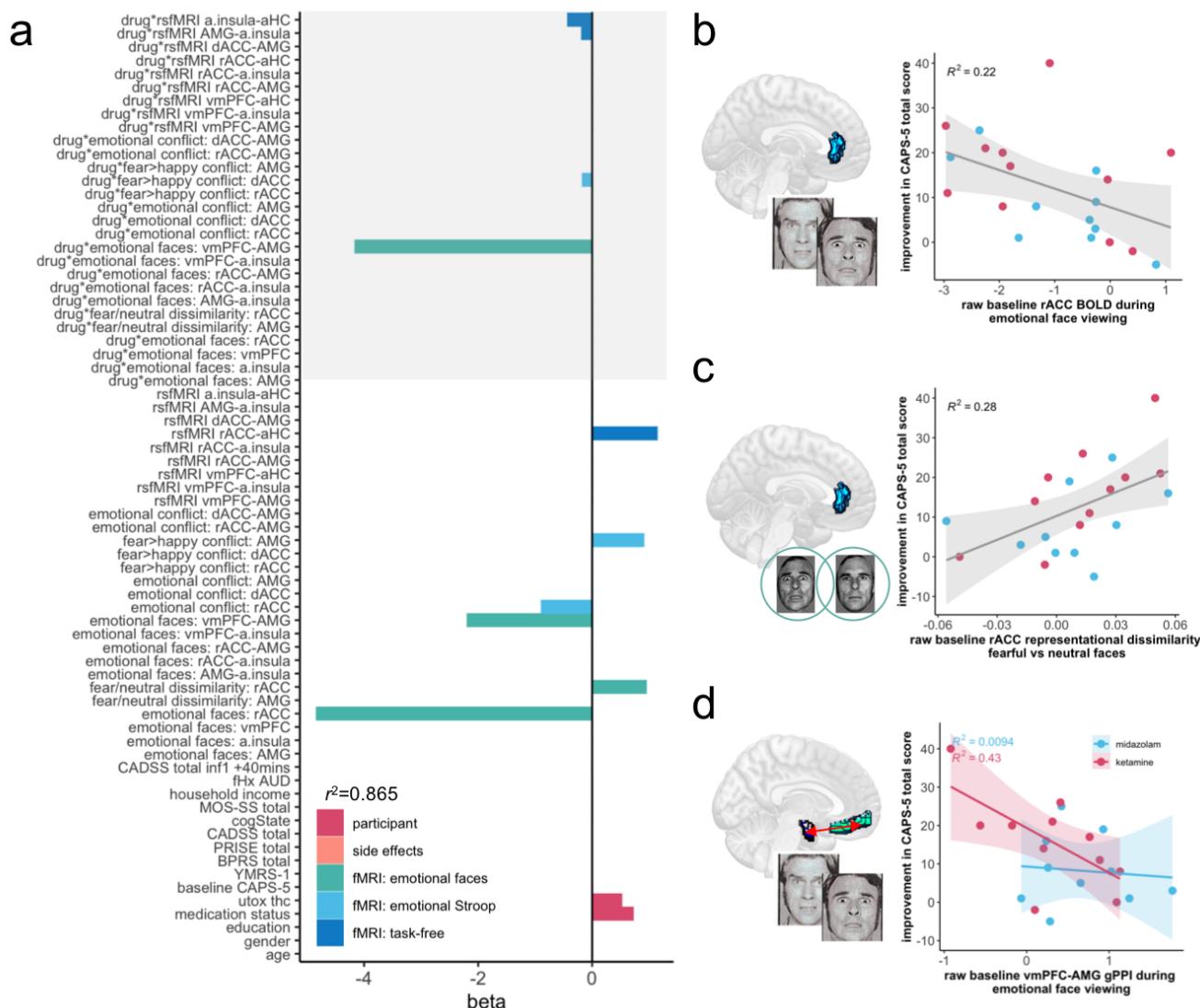
**a** Timeline of study procedures. Upon recruitment to the trial, participants were randomly allocated to a drug condition (ketamine vs midazolam) by the trial pharmacist in a 1:1 ratio. Participants received three intravenous infusions per week for two weeks of either 0.045mg/kg midazolam or 0.5mg/kg ketamine. The baseline (pre-infusion) imaging session took place prior to administration of any drugs. The second (post-infusion) scan was the day after the 4<sup>th</sup> or 5<sup>th</sup> drug infusion for 2/3 participants, and within 48 hours of the 6<sup>th</sup> infusion for 1/3 participants. **b** Baseline (pre-infusion 1) and outcome visit clinical measures for all study participants. CAPS-5, Clinician-Administered PTSD Scale for DSM-5; MADRS, Montgomery-Åsberg Depression Rating Scale. Both measures probed symptom levels over the past week and were administered by blinded raters, who were not present during drug infusion sessions. **c** Depiction of target circuit (regions of interest [ROIs] and connections between ROIs) from which functional imaging measures were extracted. dACC, dorsal anterior cingulate cortex; rACC, rostral anterior cingulate cortex, vmPFC, ventromedial prefrontal cortex; aHC, anterior hippocampus; a.insula, anterior insula; AMG, amygdala. **d** Top panels, the three functional imaging measures collected during each scan session: 1) the emotional face-processing task; 2) the emotional conflict regulation (face Stroop) task; 3) 12-minute task-free (resting state) scan. Bottom panels, imaging measures extracted from each functional run. Single ROIs represent mean univariate BOLD signal, pairs of ROIs represent generalized psychophysiological interaction (gPPI) functional connectivity estimates, and the multivariate dissimilarity metric was cross-validated linear discriminant contrast values.



**Figure 2. Neuroimaging correlates of PTSD symptom change.** **a** Standardized regression coefficient (beta) values for the elastic net model with minimum predictive error for change in PTSD symptoms over the course of treatment in left-out subjects. Non-zero coefficients represent measures with predictive value for change in PTSD severity. All imaging measures represent change scores (post-infusion scan minus pre-infusion scan). Grey shading highlights interaction terms between imaging measures and received drug identity (ketamine vs midazolam). rsfMRI, resting-state/task-free fMRI scan; CADSS, Clinician-Administered Dissociative States Scale; BPRS, four items from the Brief Psychiatric Rating Scale probing psychotomimetic symptoms; YMRS, a single item from the Young Mania Rating Scale indexing elevated mood; PRISE, Patient Rated Inventory of Side-Effects (total score calculated by summing across all somatic domains); CAPS-5, Clinician-Administered PTSD Scale for DSM-5; utox thc, urine toxicology results for presence of THC. **b** Increased connectivity between the vmPFC and AMG during emotional face-viewing was predictive of improvement in total PTSD symptom severity across all participants, but the effect was stronger in individuals who received ketamine. Decreased dACC BOLD during emotional conflict regulation (**c**), and increased resting (task-free) vmPFC-anterior insula functional connectivity (**d**), were only associated with improvement in CAPS-5 total score in individuals who received ketamine. For generalized psychophysiological interaction (gPPI) and task-free functional connectivity estimates, values represent Fisher-transformed correlation coefficients. For regional BOLD signal, values are in arbitrary units. For ease of interpretation, bivariate plots represent ‘raw’ imaging measure values (i.e., calculated prior to regression against average within-scan framewise displacement).



**Figure 3. Dynamic causal modelling of task-modulated effective connectivity during the emotional face-processing task.** **a** Parametric Empirical Bayes (PEB) analysis of pre-infusion scan data for all participants revealed that, at baseline, the onset of emotional faces shifted the AMG→vmPFC connection towards an excitation – with only weak evidence for a shift towards top-down inhibition of the AMG by the vmPFC. **b** PEB analysis of pre-post changes in connectivity related to improvement in PTSD symptoms revealed that across all participants, improvement in overall PTSD severity (CAPS-5 total score) was associated with both increased vmPFC inhibition of the AMG, and decreased AMG excitation of the vmPFC, during emotional face-viewing. **c** When participants were divided by drug condition, the relationship between PTSD symptom improvement and increased top-down inhibition of the AMG by the vmPFC during emotional stimuli was only evident in participants who received ketamine, a difference confirmed by passing both models to a 3<sup>rd</sup> level PEB analysis (more negative parameter estimate for the vmPFC→AMG connection in the ketamine group, posterior probability=0.98). For all panels, pointed arrowheads represent connections between regions, and circular arrowheads represent modulation of those connections by the experimental condition of interest (emotional faces). Values are rates of change constants in Hz. Insets depict PEB posterior parameter estimates for modulation of connectivity by the listed effect of interest: 1, vmPFC→AMG; 2, AMG→vmPFC; error bars represent 90% confidence intervals.



**Figure 4. Baseline predictors of PTSD symptom change.** **a** Standardized regression coefficient (beta) values for the elastic net model with minimum predictive error for change in PTSD symptoms over the course of treatment in left-out subjects. Imaging measures represent estimates extracted from the baseline (pre-infusion) session. Grey shading highlights interaction terms between imaging measures and received drug identity (ketamine vs midazolam). fHX AUD, family history of alcohol use disorder in first degree relatives; MOS-SS, Medical Outcomes Study Social Support Survey total score; cogState, composite score for executive function derived from the cogState neurocognitive test battery. Lower rACC BOLD during emotional face-viewing (**b**) and increased baseline representational distance between fearful and neutral faces in the rACC (**c**) were retained in the minimum error model as baseline predictors of PTSD symptom improvement across all study participants. **d** Decreased baseline connectivity between the vmPFC and AMG during emotional face-viewing was predictive of symptom improvement across all participants, with evidence of a stronger effect in individuals who went on to receive ketamine (interaction with drug retained in the model with minimum predictive error). Regional BOLD signal values are in arbitrary units. Representational dissimilarity was evaluated using cross-validated linear discriminant contrast estimates, equivalent to the Mahalanobis distance between patterns of response evoked by each kind of stimulus. For generalized psychophysiological interaction (gPPI) functional connectivity estimates, values represent Fisher-transformed correlation coefficients. Bivariate plots represent ‘raw’ imaging measure values (i.e., calculated prior to regression against average within-scan framewise displacement).



## References

1. Feder A, Parides MK, Murrough JW, Perez AM, Morgan JE, Saxena S, et al. Efficacy of Intravenous Ketamine for Treatment of Chronic Posttraumatic Stress Disorder: A Randomized Clinical Trial. *JAMA Psychiatry*. 2014;71:681–688.
2. Feder A, Costi S, Rutter SB, Collins AB, Govindarajulu U, Jha MK, et al. A Randomized Controlled Trial of Repeated Ketamine Administration for Chronic Posttraumatic Stress Disorder. *AJP*. 2021;178:193–202.
3. Abdallah CG, Sanacora G, Duman RS, Krystal JH. Ketamine and Rapid-Acting Antidepressants: A Window into a New Neurobiology for Mood Disorder Therapeutics. *Annu Rev Med*. 2015;66:509–523.
4. Duman RS, Aghajanian GK, Sanacora G, Krystal JH. Synaptic plasticity and depression: new insights from stress and rapid-acting antidepressants. *Nature Medicine*. 2016;22:238–249.
5. Shinohara R, Aghajanian GK, Abdallah CG. Neurobiology of the Rapid Acting Antidepressant Effects of Ketamine: Impact and Opportunities. *Biological Psychiatry*. 2020. 15 December 2020. <https://doi.org/10.1016/j.biopsych.2020.12.006>.
6. Krystal JH, Abdallah CG, Averill LA, Kelmendi B, Harpaz-Rotem I, Sanacora G, et al. Synaptic Loss and the Pathophysiology of PTSD: Implications for Ketamine as a Prototype Novel Therapeutic. *Curr Psychiatry Rep*. 2017;19:74.
7. Feder A, Rutter SB, Schiller D, Charney DS. The emergence of ketamine as a novel treatment for posttraumatic stress disorder. *Adv Pharmacol*. 2020;89:261–286.
8. Wilkinson ST, Holtzheimer PE, Gao S, Kirwin DS, Price RB. Leveraging neuroplasticity to enhance adaptive learning: The potential for synergistic somatic-behavioral treatment combinations to improve clinical outcomes in depression. *Biological Psychiatry*. 2018;85:454–465.
9. Fattore L, Piva A, Zanda MT, Fumagalli G, Chiamulera C. Psychedelics and reconsolidation of traumatic and appetitive maladaptive memories: focus on cannabinoids and ketamine. *Psychopharmacology*. 2018;235:433–445.
10. Murrough JW, Collins KA, Fields J, DeWilde KE, Phillips ML, Mathew SJ, et al. Regulation of neural responses to emotion perception by ketamine in individuals with treatment-resistant major depressive disorder. *Translational Psychiatry*. 2015;5:e509.
11. Reed JL, Nugent AC, Furey ML, Szczepanik JE, Evans JW, Zarate CA. Effects of Ketamine on Brain Activity During Emotional Processing: Differential Findings in Depressed Versus Healthy Control Participants. *Biological Psychiatry: Cognitive Neuroscience and Neuroimaging*. 2019;4:610–618.
12. Loureiro JRA, Leaver A, Vasavada M, Sahib AK, Kubicki A, Joshi S, et al. Modulation of amygdala reactivity following rapidly acting interventions for major depression. *Human Brain Mapping*. 2020;41:1699–1710.
13. Pitman RK, Rasmusson AM, Koenen KC, Shin LM, Orr SP, Gilbertson MW, et al. Biological studies of post-traumatic stress disorder. *Nature Reviews Neuroscience*. 2012;13:769–787.
14. Patel R, Spreng RN, Shin LM, Girard TA. Neurocircuitry models of posttraumatic stress disorder and beyond: A meta-analysis of functional neuroimaging studies. *Neuroscience & Biobehavioral Reviews*. 2012;36:2130–2142.
15. Hayes JP, Hayes SM, Mikedis AM. Quantitative meta-analysis of neural activity in posttraumatic stress disorder. *Biology of Mood & Anxiety Disorders*. 2012;2:9.
16. Sheynin J, Liberzon I. Circuit dysregulation and circuit-based treatments in posttraumatic stress disorder. *Neuroscience Letters*. 2017;649:133–138.



17. Negreira AM, Abdallah CG. A Review of fMRI Affective Processing Paradigms Used in the Neurobiological Study of Posttraumatic Stress Disorder. *Chronic Stress*. 2019;3:1–13.
18. Duek O, Kelmendi B, Pietrzak RH, Harpaz-Rotem I. Augmenting the Treatment of PTSD with Ketamine—a Review. *Curr Treat Options Psych*. 2019;6:143–153.
19. Weston SJ, Ritchie SJ, Rohrer JM, Przybylski AK. Recommendations for Increasing the Transparency of Analysis of Preexisting Data Sets. *Advances in Methods and Practices in Psychological Science*. 2019;2:214–227.
20. Norbury A, Collins A, Murrough JW, Feder A. Neuroimaging correlates and predictors of response to repeated-dose intravenous ketamine in PTSD. *Open Science Framework*. 2019. 18 January 2019. <https://doi.org/10.17605/OSF.IO/8BEWV>.
21. Weathers FW, Blake DD, Schnurr PP, Kaloupek DG, Marx BP, Keane TM. Clinician-Administered PTSD Scale for DSM-5 (CAPS-5). 2013. <https://www.ptsd.va.gov/professional/assessment/adult-int/caps.asp>. Accessed 9 October 2018.
22. Montgomery SA, Åsberg M. A New Depression Scale Designed to be Sensitive to Change. *The British Journal of Psychiatry*. 1979;134:382–389.
23. Bremner JD, Krystal JH, Putnam FW, Southwick SM, Marmar C, Charney DS, et al. Measurement of dissociative states with the Clinician-Administered Dissociative States Scale (CADSS). *Journal of Traumatic Stress*. 1998;11:125–136.
24. Overall JE, Gorham DR. The Brief Psychiatric Rating Scale (BPRS): Recent developments in ascertainment and scaling. *Psychopharmacology Bulletin*. 1988;24:97–99.
25. Young RC, Biggs JT, Ziegler VE, Meyer DA. A Rating Scale for Mania: Reliability, Validity and Sensitivity. *The British Journal of Psychiatry*. 1978;133:429–435.
26. Rush AJ, Fava M, Wisniewski SR, Lavori PW, Trivedi MH, Sackeim HA, et al. Sequenced treatment alternatives to relieve depression (STAR\*D): rationale and design. *Controlled Clinical Trials*. 2004;25:119–142.
27. Wilkinson ST, Farmer C, Ballard ED, Mathew SJ, Grunebaum MF, Murrough JW, et al. Impact of midazolam vs. saline on effect size estimates in controlled trials of ketamine as a rapid-acting antidepressant. *Neuropsychopharmacology*. 2019;44:1233–1238.
28. Dakwar E, Anerella C, Hart CL, Levin FR, Mathew SJ, Nunes EV. Therapeutic infusions of ketamine: do the psychoactive effects matter? *Drug Alcohol Depend*. 2014;136:153–157.
29. Hariri AR, Tessitore A, Mattay VS, Fera F, Weinberger DR. The Amygdala Response to Emotional Stimuli: A Comparison of Faces and Scenes. *NeuroImage*. 2002;17:317–323.
30. Offringa R, Handwerker Brohawn K, Staples LK, Dubois SJ, Hughes KC, Pfaff DL, et al. Diminished rostral anterior cingulate cortex activation during trauma-unrelated emotional interference in PTSD. *Biology of Mood & Anxiety Disorders*. 2013;3:10.
31. Esteban O, Blair R, Markiewicz CJ, Berleant SL, Moodie C, Ma F, et al. poldracklab/fmriprep: 1.1.4. Zenodo; 2018.
32. Esteban O, Markiewicz CJ, Blair RW, Moodie CA, Isik AI, Erramuzpe A, et al. fMRIPrep: a robust preprocessing pipeline for functional MRI. *Nature Methods*. 2019;16:111–116.
33. Pruim RHR, Mennes M, van Rooij D, Llera A, Buitelaar JK, Beckmann CF. ICA-AROMA: A robust ICA-based strategy for removing motion artifacts from fMRI data. *NeuroImage*. 2015;112:267–277.
34. Behzadi Y, Restom K, Liau J, Liu TT. A component based noise correction method (CompCor) for BOLD and perfusion based fMRI. *NeuroImage*. 2007;37:90–101.
35. Power JD, Barnes KA, Snyder AZ, Schlaggar BL, Petersen SE. Spurious but systematic correlations in functional connectivity MRI networks arise from subject motion. *NeuroImage*. 2012;59:2142–2154.

36. Ionescu DF, Felicione JM, Gosai A, Cusin C, Shin P, Shapero BG, et al. Ketamine-Associated Brain Changes: A Review of the Neuroimaging Literature. *Harv Rev Psychiatry*. 2018;26:320–339.
37. Yarkoni T, Poldrack RA, Nichols TE, Van Essen DC, Wager TD. Large-scale automated synthesis of human functional neuroimaging data. *Nature Methods*. 2011;8:665–670.
38. Brett M, Anton J-L, Valabregue R, Poline J-B. Region of interest analysis using an SPM toolbox. *Neuroimage*, vol. 16 (2), Sendai, Japan; 2002.
39. Whitfield-Gabrieli S, Nieto-Castanon A. Conn: A Functional Connectivity Toolbox for Correlated and Anticorrelated Brain Networks. *Brain Connectivity*. 2012;2:125–141.
40. Nili H, Wingfield C, Walther A, Su L, Marslen-Wilson W, Kriegeskorte N. A Toolbox for Representational Similarity Analysis. *PLOS Computational Biology*. 2014;10:e1003553.
41. Power JD, Schlaggar BL, Petersen SE. Recent progress and outstanding issues in motion correction in resting state fMRI. *NeuroImage*. 2015;105:536–551.
42. Satterthwaite TD, Ciric R, Roalf DR, Davatzikos C, Bassett DS, Wolf DH. Motion artifact in studies of functional connectivity: Characteristics and mitigation strategies. *Human Brain Mapping*. 2019;40:2033–2051.
43. Yang Z, Gu S, Honnorat N, Linn KA, Shinohara RT, Aselcioglu I, et al. Network changes associated with transdiagnostic depressive symptom improvement following cognitive behavioral therapy in MDD and PTSD. *Molecular Psychiatry*. 2018;23:2314–2323.
44. Zou H, Hastie T. Regularization and variable selection via the elastic net. *Journal of the Royal Statistical Society: Series B (Statistical Methodology)*. 2005;67:301–320.
45. Friedman JH, Hastie T, Tibshirani R. Regularization Paths for Generalized Linear Models via Coordinate Descent. *Journal of Statistical Software*. 2010;33:1–22.
46. Tibshirani R. Regression Shrinkage and Selection Via the Lasso. *Journal of the Royal Statistical Society: Series B (Methodological)*. 1996;58:267–288.
47. Tikhonov AN, Arsenin VY. Solutions of ill-posed problems. V. H. Winston and Sons (distributed by Wiley, New York); 1977.
48. Yarkoni T, Westfall J. Choosing prediction over explanation in psychology: Lessons from machine learning. *Perspect Psychol Sci*. 2017;12:1100–1122.
49. Armour C, Tsai J, Durham TA, Charak R, Biehn TL, Elhai JD, et al. Dimensional structure of DSM-5 posttraumatic stress symptoms: Support for a hybrid Anhedonia and Externalizing Behaviors model. *Journal of Psychiatric Research*. 2015;61:106–113.
50. Contractor AA, Roley-Roberts ME, Lagdon S, Armour C. Heterogeneity in patterns of DSM-5 posttraumatic stress disorder and depression symptoms: Latent profile analyses. *Journal of Affective Disorders*. 2017;212:17–24.
51. Armour C, Contractor A, Shea T, Elhai JD, Pietrzak RH. Factor Structure of the PTSD Checklist for DSM-5: Relationships Among Symptom Clusters, Anger, and Impulsivity. *J Nerv Ment Dis*. 2016;204:108–115.
52. Friston KJ, Harrison L, Penny W. Dynamic causal modelling. *NeuroImage*. 2003;19:1273–1302.
53. Friston KJ, Litvak V, Oswal A, Razi A, Stephan KE, van Wijk BCM, et al. Bayesian model reduction and empirical Bayes for group (DCM) studies. *NeuroImage*. 2016;128:413–431.
54. Zeidman P, Jafarian A, Seghier ML, Litvak V, Cagnan H, Price CJ, et al. A guide to group effective connectivity analysis, part 2: Second level analysis with PEB. *NeuroImage*. 2019;200:12–25.
55. Fonzo GA, Goodkind MS, Oathes DJ, Zaiko YV, Harvey M, Peng KK, et al. Amygdala and Insula Connectivity Changes Following Psychotherapy for Posttraumatic Stress Disorder: A

- Randomized Clinical Trial. *Biological Psychiatry*. 2020. 8 December 2020. <https://doi.org/10.1016/j.biopsych.2020.11.021>.
56. Oldham PD. A note on the analysis of repeated measurements of the same subjects. *Journal of Chronic Diseases*. 1962;15:969–977.
  57. Tu Y-K, Gilthorpe MS. Revisiting the relation between change and initial value: a review and evaluation. *Statistics in Medicine*. 2007;26:443–457.
  58. Norbury A, Perez-Rodriguez MM, Feder A. Neuroimaging resilience to trauma: convergent evidence and challenges for future research. 2019.
  59. Moreno-López L, Ioannidis K, Askelund AD, Smith AJ, Schueler K, van Harmelen A-L. The Resilient Emotional Brain: A Scoping Review of the Medial Prefrontal Cortex and Limbic Structure and Function in Resilient Adults With a History of Childhood Maltreatment. *Biological Psychiatry: Cognitive Neuroscience and Neuroimaging*. 2020;5:392–402.
  60. Kaldewaj R, Koch SBJ, Hashemi MM, Zhang W, Klumpers F, Roelofs K. Anterior prefrontal brain activity during emotion control predicts resilience to post-traumatic stress symptoms. *Nat Hum Behav*. 2021. 18 February 2021. <https://doi.org/10.1038/s41562-021-01055-2>.
  61. Zhu X, Suarez-Jimenez B, Lazarov A, Helpman L, Papini S, Lowell A, et al. Exposure-based therapy changes amygdala and hippocampus resting-state functional connectivity in patients with posttraumatic stress disorder. *Depression and Anxiety*. 2018;35:974–984.
  62. Fonso GA, Simmons AN, Thorp SR, Norman SB, Paulus MP, Stein MB. Exaggerated and Disconnected Insular-Amygdalar Blood Oxygenation Level-Dependent Response to Threat-Related Emotional Faces in Women with Intimate-Partner Violence Posttraumatic Stress Disorder. *Biological Psychiatry*. 2010;68:433–441.
  63. Quirk GJ, Mueller D. Neural Mechanisms of Extinction Learning and Retrieval. *Neuropsychopharmacology*. 2008;33:56–72.
  64. Orsini CA, Maren S. Neural and cellular mechanisms of fear and extinction memory formation. *Neuroscience & Biobehavioral Reviews*. 2012;36:1773–1802.
  65. Milad MR, Wright CI, Orr SP, Pitman RK, Quirk GJ, Rauch SL. Recall of Fear Extinction in Humans Activates the Ventromedial Prefrontal Cortex and Hippocampus in Concert. *Biological Psychiatry*. 2007;62:446–454.
  66. Schiller D, Delgado MR. Overlapping neural systems mediating extinction, reversal and regulation of fear. *Trends in Cognitive Sciences*. 2010;14:268–276.
  67. Zuj DV, Palmer MA, Lommen MJJ, Felmingham KL. The centrality of fear extinction in linking risk factors to PTSD: A narrative review. *Neuroscience & Biobehavioral Reviews*. 2016;69:15–35.
  68. Reddan MC, Wager TD, Schiller D. Attenuating Neural Threat Expression with Imagination. *Neuron*. 2018;100:994-1005.e4.
  69. Girenti MJ, Ghosal S, LoPresto D, Taylor JR, Duman RS. Ketamine accelerates fear extinction via mTORC1 signaling. *Neurobiology of Disease*. 2017;100:1–8.
  70. Fortress AM, Smith IM, Pang KCH. Ketamine facilitates extinction of avoidance behavior and enhances synaptic plasticity in a rat model of anxiety vulnerability: Implications for the pathophysiology and treatment of anxiety disorders. *Neuropharmacology*. 2018;137:372–381.
  71. Wei M-D, Wang Y-H, Lu K, Lv B-J, Wang Y, Chen W-Y. Ketamine reverses the impaired fear memory extinction and accompanied depressive-like behaviors in adolescent mice. *Behavioural Brain Research*. 2020;379:112342.
  72. Sladky R, Höflich A, Küblböck M, Kraus C, Baldinger P, Moser E, et al. Disrupted Effective Connectivity Between the Amygdala and Orbitofrontal Cortex in Social Anxiety Disorder

- During Emotion Discrimination Revealed by Dynamic Causal Modeling for fMRI. *Cerebral Cortex*. 2015;25:895–903.
73. Minkova L, Sladky R, Kranz GS, Woletz M, Geissberger N, Kraus C, et al. Task-dependent modulation of amygdala connectivity in social anxiety disorder. *Psychiatry Research: Neuroimaging*. 2017;262:39–46.
  74. Rangaprakash D, Dretsch MN, Venkataraman A, Katz JS, Denney TS, Deshpande G. Identifying disease foci from static and dynamic effective connectivity networks: Illustration in soldiers with trauma. *Human Brain Mapping*. 2018;39:264–287.
  75. Nicholson AA, Friston KJ, Zeidman P, Harricharan S, McKinnon MC, Densmore M, et al. Dynamic causal modeling in PTSD and its dissociative subtype: Bottom–up versus top–down processing within fear and emotion regulation circuitry. *Human Brain Mapping*. 2017;38:5551–5561.
  76. Chavez RS, Heatherton TF. Representational Similarity of Social and Valence Information in the Medial pFC. *Journal of Cognitive Neuroscience*. 2014;27:73–82.
  77. Visser, R.M., Scholte, H.S., Beemsterboer, T., Kindt, M. Neural pattern similarity predicts long-term fear memory. *Nature Neuroscience*. 2013;16:388–390.
  78. Plichta MM, Schwarz AJ, Grimm O, Morgen K, Mier D, Haddad L, et al. Test–retest reliability of evoked BOLD signals from a cognitive–emotive fMRI test battery. *NeuroImage*. 2012;60:1746–1758.
  79. Nord CL, Gray A, Charpentier CJ, Robinson OJ, Roiser JP. Unreliability of putative fMRI biomarkers during emotional face processing. *NeuroImage*. 2017;156:119–127.
  80. Elliott ML, Knodt AR, Ireland D, Morris ML, Poulton R, Ramrakha S, et al. What Is the Test-Retest Reliability of Common Task-Functional MRI Measures? New Empirical Evidence and a Meta-Analysis. *Psychol Sci*. 2020;31:792–806.
  81. Nord CL, Gray A, Robinson OJ, Roiser JP. Reliability of Fronto–Amygdala Coupling during Emotional Face Processing. *Brain Sciences*. 2019;9:89.
  82. Dubois J, Adolphs R. Building a Science of Individual Differences from fMRI. *Trends in Cognitive Sciences*. 2016;20:425–443.
  83. Walther A, Nili H, Ejaz N, Alink A, Kriegeskorte N, Diedrichsen J. Reliability of dissimilarity measures for multi-voxel pattern analysis. *Neuroimage*. 2015;137:188–200.
  84. Roiser JP, Elliott R, Sahakian BJ. Cognitive Mechanisms of Treatment in Depression. *Neuropsychopharmacology*. 2012;37:117–136.
  85. Godlewska BR, Harmer CJ. Cognitive neuropsychological theory of antidepressant action: a modern-day approach to depression and its treatment. *Psychopharmacology*. 2020. 2020. <https://doi.org/10.1007/s00213-019-05448-0>.
  86. Nord CL, Barrett LF, Lindquist KA, Ma Y, Marwood L, Satpute AB, et al. Neural effects of antidepressant medication and psychological treatments: a quantitative synthesis across three meta-analyses. *The British Journal of Psychiatry*. 2021:1–5.