

1 **An international, interlaboratory ring trial confirms the feasibility of an open-**  
2 **source, extraction-less “direct” RT-qPCR method for reliable detection of**  
3 **SARS-CoV-2 RNA in clinical samples**

4 Margaret G. Mills<sup>1¶</sup>, Emily Bruce<sup>2¶</sup>, Meei-Li Huang<sup>1</sup>, Jessica W. Crothers<sup>2</sup>, Ollivier Hyrien<sup>3</sup>, Christopher  
5 A. L. Oura<sup>4</sup>, Lemar Blake<sup>4</sup>, Arianne Brown Jordan<sup>5</sup>, Susan Hester<sup>6</sup>, Leah Wehmas<sup>6</sup>, Bernard Mari<sup>7</sup>, Pascal  
6 Barby<sup>7</sup>, Caroline Lacoux<sup>7</sup>, Julien Fassy<sup>7</sup>, Pablo Vial<sup>8</sup>, Cecilia Vial<sup>8</sup>, Jose R.W. Martinez<sup>8</sup>, Olusola  
7 Olalekan Oladipo<sup>9</sup>, Bitrus Inuwa<sup>10</sup>, Ismaila Shittu<sup>10</sup>, Clement A. Meseke<sup>10</sup>, Roger Chammas<sup>11</sup>, Carlos  
8 Ferreira Santos<sup>12</sup>, Thiago José Dionísio<sup>12</sup>, Thais Francini Garbieri<sup>12</sup>, Viviane Aparecida Parisi<sup>12</sup>, Maria  
9 Cassia Mendes-Correa<sup>13</sup>, Anderson V. dePaula<sup>13</sup>, Camila M. Romano<sup>13</sup>, Luiz Gustavo Bentim Góes<sup>14,15</sup>,  
10 Paola Minoprio<sup>14</sup>, Angelica C. Campos<sup>14</sup>, Marielton P. Cunha<sup>14</sup>, Ana Paula P. Vilela<sup>14</sup>, Tonney  
11 Nyirenda<sup>16</sup>, Rajhab Sawasawa Mkakosya<sup>16</sup>, Adamson S. Muula<sup>17</sup>, Rebekah E. Dumm<sup>18</sup>, Rebecca M.  
12 Harris<sup>18</sup>, Constance A. Mitchell<sup>19</sup>, Cyril Pettit<sup>19\*</sup>, Jason Botten<sup>2,20\*</sup>, and Keith R. Jerome<sup>1,3\*</sup>

13 <sup>1</sup>Virology Division, Department of Laboratory Medicine and Pathology, University of Washington,  
14 Seattle, Washington, USA

15 <sup>2</sup>Division of Immunobiology, Department of Medicine, Robert Larner, M.D. College of Medicine,  
16 University of Vermont, Burlington, Vermont, USA

17 <sup>3</sup>Vaccine and Infectious Disease Division, Fred Hutchinson Cancer Research Center, Seattle, Washington,  
18 USA

19 <sup>4</sup>School of Veterinary Medicine, University of the West Indies, Trinidad and Tobago

20 <sup>5</sup>Ministry of Health, Trinidad and Tobago

21 <sup>6</sup>Office of Research and Development, U.S. Environmental Protection Agency, Research Triangle Park,  
22 North Carolina, USA

23 <sup>7</sup>Université Côte d’Azur, CNRS, Institut de Pharmacologie Moléculaire et Cellulaire, FHU-OncoAge,  
24 Valbonne, France

- 25 <sup>8</sup>Programa Hantavirus, Instituto de Ciencias e Innovación en Medicina, Facultad de Medicina Clínica  
26 Alemana Universidad del Desarrollo, Santiago, Chile
- 27 <sup>9</sup>Biochemistry Division, National Veterinary Research Institute, Vom, Nigeria
- 28 <sup>10</sup>Infectious and Transboundary Animal Diseases, National Veterinary Research Institute, Vom, Nigeria
- 29 <sup>11</sup>Centro de Investigação Translacional em Oncologia, Departamento de Radiologia e Oncologia, Instituto  
30 do Cancer do Estado de São Paulo, Faculdade de Medicina da Universidade de São Paulo, São Paulo,  
31 Brazil
- 32 <sup>12</sup>Bauru School of Dentistry, Department of Biological Sciences, University of São Paulo, Bauru, São  
33 Paulo, Brazil
- 34 <sup>13</sup>Department of Infectious Diseases, Institute of Tropical Medicine of São Paulo, São Paulo, Brazil
- 35 <sup>14</sup>Scientific Platform Pasteur-USP, Universidade de São Paulo, São Paulo, São Paulo, Brazil
- 36 <sup>15</sup>Department of Microbiology, Biomedical Sciences Institute, University of São Paulo, São Paulo, Brazil
- 37 <sup>16</sup>Department of Pathology, College of Medicine, University of Malawi, Blantyre, Malawi
- 38 <sup>17</sup>Department of Public Health, College of Medicine, University of Malawi, Blantyre, Malawi
- 39 <sup>18</sup>Children's Hospital of Philadelphia, Philadelphia, Pennsylvania, USA
- 40 <sup>19</sup>Health and Environmental Sciences Institute, Washington, DC, USA
- 41 <sup>20</sup>Department of Microbiology and Molecular Genetics, Robert Larner, M.D. College of Medicine,  
42 University of Vermont, Burlington, Vermont, USA
- 43 \*Corresponding authors: [spettit@hesiglobal.org](mailto:spettit@hesiglobal.org) (SP), [jason.botten@uvm.med.edu](mailto:jason.botten@uvm.med.edu) (JB),  
44 [kjerome@uw.edu](mailto:kjerome@uw.edu) (KRJ).
- 45 <sup>†</sup>These authors contributed equally to this work.

## 46 **Abbreviations**

47	CDC	Centers for Disease Control and Prevention
48	COVID-19	coronavirus disease
49	C <sub>t</sub>	cycle threshold
50	FFU	focus forming unit
51	HESI	Health and Environmental Sciences Institute
52	IRB	institutional review board
53	N2	specific PCR target within SARS-CoV-2 nucleocapsid (N) gene
54	RNA	ribonucleic acid
55	RP	human RNase P gene
56	RT-PCR	real time–reverse transcription polymerase chain reaction
57	RT-qPCR	reverse transcription–quantitative polymerase chain reaction
58	SARS-CoV-2	severe acute respiratory syndrome coronavirus 2
59	UWVL	University of Washington Virology Laboratory

## 60 **Abstract**

61 Reverse transcription–quantitative polymerase chain reaction (RT-qPCR) is used worldwide to test and  
62 trace the spread of severe acute respiratory syndrome coronavirus 2 (SARS-CoV-2). “Extraction-less” or  
63 “direct” real time–reverse transcription polymerase chain reaction (RT-PCR) is an open-access qualitative  
64 method for SARS-CoV-2 detection from nasopharyngeal or oral pharyngeal samples with the potential to  
65 generate actionable data more quickly, at a lower cost, and with fewer experimental resources than full  
66 RT-qPCR. This study engaged 10 global testing sites, including laboratories currently experiencing  
67 testing limitations due to reagent or equipment shortages, in an international interlaboratory ring trial.  
68 Participating laboratories were provided a common protocol, common reagents, aliquots of identical  
69 pooled clinical samples, and purified nucleic acids and used their existing in-house equipment. We  
70 observed 100% concordance across laboratories in the correct identification of all positive and negative  
71 samples, with highly similar cycle threshold values. The test also performed well when applied to locally  
72 collected patient nasopharyngeal samples, provided the viral transport media did not contain charcoal or  
73 guanidine, both of which appeared to potently inhibit the RT-PCR reaction. Our results suggest that open-  
74 access, direct RT-PCR assays are a feasible option for more efficient COVID-19 coronavirus disease  
75 testing as demanded by the continuing pandemic.

## 76 **1. Introduction**

77 The global coronavirus disease (COVID-19) pandemic response depends on effective rollout of  
78 recently approved vaccines and the use of nonpharmaceutical interventions to slow the spread of the  
79 disease. Physical distancing supported by test-and-trace informed containment strategies has been  
80 promoted worldwide [1]. The effectiveness of testing as a containment strategy requires the  
81 implementation of accessible, affordable, reliable, and rapidly executable test methods that can meet the  
82 rapid pace of severe acute respiratory syndrome coronavirus 2 (SARS-CoV-2) transmission [2-4]. At  
83 present, this goal remains largely unmet.

84 The majority of regional and national health laboratories around the world rely on reverse  
85 transcription–quantitative polymerase chain reaction (RT-qPCR) SARS-CoV-2 virologic testing methods  
86 such as those developed by the World Health Organization and the U.S. Centers for Disease Control and  
87 Prevention (CDC) to support their public health programs [5, 6]. The methods themselves are robust and  
88 have proven to be useful standards for detection and reporting. However, sample processing time and a  
89 lack of supplies to support extraction as required to run this type of assay have resulted in widely reported  
90 backlogs and shortages in the United States and around the world [7]. In regions that also suffer from  
91 systemic financial and logistical challenges (e.g., Africa, the Caribbean, and South America), these  
92 hurdles will continue to consistently impair reliable procurement of consumables, support for staffing,  
93 and thus testing viability [8, 9]. Although the diversity and efficiency of commercial virologic and  
94 serologic test methods expands weekly, most public health laboratories lack the resources (human and  
95 capital) or remit to pivot to novel commercial methods.

96 To address these challenges, the nonprofit Health and Environmental Science Institute (HESI)  
97 convened an international network of public and academic COVID-19 testing laboratories — the  
98 Propagate Network — with the goal of collectively evaluating and disseminating practical, efficient, and  
99 impactful open-access methods for SARS-CoV-2 detection. The Propagate Network and others have  
100 identified “extraction-less” or “direct” real time–reverse transcription polymerase chain reaction (RT-

101 PCR) as an open-access qualitative method for SARS-CoV-2 detection from nasopharyngeal samples  
102 with the potential to generate actionable data more quickly, at a lower cost, and with fewer experimental  
103 resources than full RT-qPCR [10, 11]. The method allows for detection of SARS-CoV-2 viral ribonucleic  
104 acid (RNA) with the omission of the most labor-intensive step — the RNA extraction step — and its  
105 associated extraction reagents. Published intralaboratory studies indicate that the technique is internally  
106 reproducible (with some loss of sensitivity compared to standard RT-PCR) and is effective in detecting  
107 both true negatives and positives. Notably, direct RT-qPCR remains sufficiently sensitive to detect viral  
108 RNA from patients most likely to be infectious (cycle threshold [Ct] < 33) [12-15].

109 The major goal of this Propagate Network study was to determine the practical utility of an open-  
110 access, direct RT-PCR assay [10] via an international, interlaboratory ring trial. The study engaged 10  
111 global sites, including laboratories currently experiencing many of the testing limitations described above,  
112 in a series of studies involving a common protocol, common reagents, aliquots of identical pooled clinical  
113 samples, and purified nucleic acids, using their existing in-house equipment. Our results suggest that  
114 open-access, direct RT-PCR assays are a feasible option for more efficient COVID-19 testing as  
115 demanded by the growing pandemic.

## 116 **2. Materials and Methods**

### 117 **2.1 Participants**

118 The Propagate Network study was coordinated and partially funded by the international nonprofit  
119 HESI as part of its global public health mission and via voluntary contributions of time and effort from  
120 the participating partners. Special acknowledgment is given to the University of Washington Virology  
121 Laboratory (UWVL) for their efforts to prepare and ship samples for this study and to the University of  
122 Vermont Larner School of Medicine for their support in refining the study protocols and recruiting  
123 partner laboratories.

124 Ten laboratories were recruited to participate in the trial for the detection of SARS-CoV-2 RNA from  
125 patient nasopharyngeal swabs without RNA extraction using kits provided by UWVL (**Table 1**).

126 Laboratories participated voluntarily and were not offered any compensation for their participation. Due  
 127 to logistical shipping challenges, which were in large part brought on by the pandemic, samples were  
 128 unable to be sent to Malawi or Nigeria, underlying the hardships some areas face when testing relies on  
 129 reagents or materials from other countries.

130 **Table 1. Institutions and Countries of the Laboratories Participating in the Trial.**

131

<b>Institution</b>	<b>Country</b>	<b>Role in Propagate Network</b>	<b>Laboratory Role in COVID-19 Testing Regionally</b>
Department of Pathology, College of Medicine, University of Malawi	Malawi	Project C	Collaborating with government public health authorities to provide testing for local population
Bauru School of Dentistry, Department of Biological Sciences, University of São Paulo, Bauru, São Paulo, Brazil	Brazil	Projects A and B	Collaborating with government public health authorities to provide testing for local population and students. Laboratory component of the COVID-19 Diagnostic Network from the University of São Paulo
Department of Infectious Diseases, Institute of Tropical Medicine of São Paulo, São Paulo, Brazil	Brazil	Projects A, B, and C	Collaborating with government public health authorities to provide testing for local population and students. Laboratory component of the COVID-19 Diagnostic Network from the University of São Paulo
Scientific Platform Pasteur-USP, Universidade de São Paulo, São Paulo, São Paulo, Brazil	Brazil	Projects A, B, and C	Collaborating with government public health authorities to provide testing for local population and students. Laboratory component of the COVID-19 Diagnostic Network from the University of São Paulo
Biochemistry Division, National Veterinary Research Institute	Nigeria	Project C	Collaborating with government public health authorities to provide testing for local population
Instituto de Ciencias e Innovación en Medicina, Facultad de Medicina Clínica Alemana Universidad del Desarrollo, Santiago, Chile	Chile	Projects A, B, and C	Collaborating with government public health authorities to provide testing for local population
Institut de Pharmacologie Moléculaire et Cellulaire, Université Côte d'Azur	France	Projects A and B	Basic science, testing developments

LBM Bioesterel	France	Projects A and B	Medical laboratory: processes thousands of samples daily for the south east region of France
School of Veterinary Medicine, University of the West Indies	Trinidad and Tobago	Projects A, B, and C	Collaborating with government public health authorities to provide testing for local population, returning residents, and migrants
Division of Immunobiology, Department of Medicine, Robert Larner, M.D. College of Medicine, University of Vermont	United States	Projects A, B, and C	Basic science, development of streamlined diagnostic RT-PCR assays for SARS-CoV-2 testing/screening in Vermont, determining how viral RNA load in clinical samples correlates with infectiousness
Office of Research and Development, U.S. Environmental Protection Agency	United States	Projects A and B	Not engaged in COVID-19 testing on a regular basis
University of Washington Virology Laboratory (UWVL), Virology Division, Department of Laboratory Medicine and Pathology, University of Washington	United States	Projects A and B; lead laboratory responsible for Project A/B sample preparation and dissemination	Processes thousands of samples daily for Pacific Northwest Region and elsewhere in the United States

---

132

## 133 **2.2 Ethical statement**

134 The samples generated and disseminated as part of Projects A and B were approved under a waiver of  
135 consent by the University of Washington institutional review board (IRB; STUDY00000408). The de-  
136 identified samples were determined to be exempt because they were not considered human subjects  
137 research due to the quality improvement and public health intent of the work. For Project C, participating  
138 laboratories sought the locally appropriate review and permissions for use of de-identified clinical  
139 samples as described below.

- 140 • **University of West Indies:** Based on the Campus Research Ethics Committee at the University  
141 of West Indies, this research met the criteria for Exemption. This decision was made by the chair  
142 of the ethics committee, Professor Jerome De Liste.



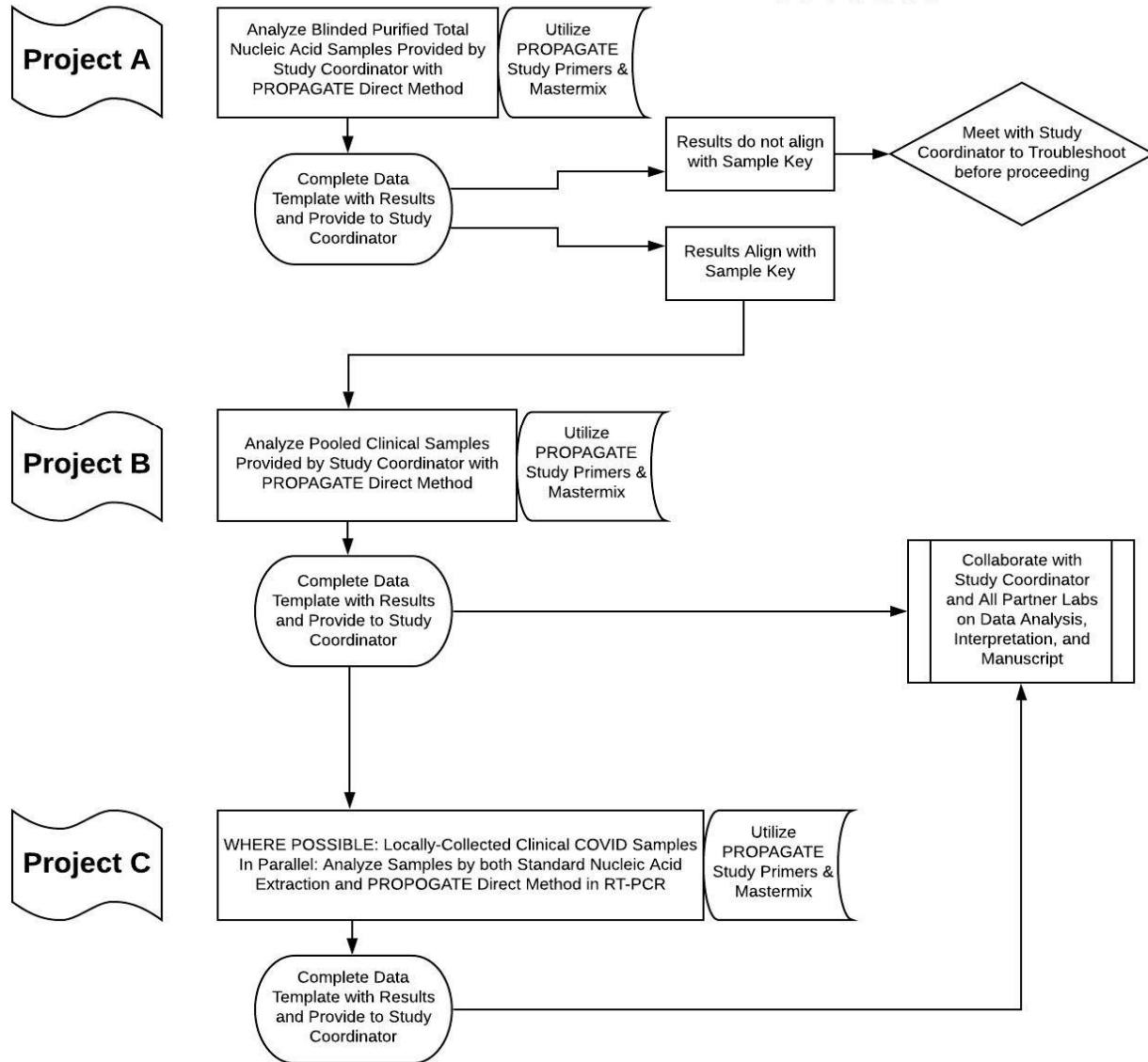
- 143       • **Department of Infectious Diseases, Institute of Tropical Medicine of São Paulo:** Sample use  
144       was approved by the local ethics committee (Comissão de Ética para Análise de Projeto de  
145       Pesquisa; protocol number CAAE 30419320.7.0000.0068). Informed consent was obtained from  
146       all the individuals enrolled in this study.
- 147       • **National Veterinary Research Institute, Nigeria:** This work and samples were approved for  
148       ethical use within the emergency response to COVID-19 control in Nigeria through rapid  
149       laboratory diagnosis. The National Veterinary Research Institute in accordance with the World  
150       Organization for Animal Health guidance offered its facility for Public Health Service in Nigeria  
151       following activation by the Nigerian Centre for Diseases Control of the Federal Ministry of  
152       Health.
- 153       • **University of Malawi:** Based on a review by the College of Medicine Research and Ethics  
154       Committee (COMREC), no IRB approval acknowledgments were required. This was reviewed by  
155       the COMREC administrator, Dr. Lucinda Manda-Taylor, and the compliance officer, Khama  
156       Mita.
- 157       • **University of Vermont:** This work was approved under a waiver of consent by the University of  
158       Vermont IRB (STUDY00000881).
- 159       • **Instituto de Ciencias e Innovación en Medicina, Facultad de Medicina Clínica Alemana**  
160       **Universidad del Desarrollo, Santiago, Chile:** The study and publication of its data was  
161       approved by a decision made by the Scientific Ethics Committee at the Center of Bioethics at the  
162       College of Medicine on 17 March 2021 (as approved by Dr. Marcial Osorio (President of the  
163       Scientific Ethics Committee) and Javiera Bellolio A. (Executive Secretary of the Scientific Ethics  
164       Committee, College of Medicine, Center of Bioethics) upon review of the document  
165       “Admin\_Comp\_200-53 Requests for Release of Clinical Specimens or Results”, as well as this  
166       manuscript. The committee made the statement “It is considered that, given the modality of the  
167       study, where the identity is duly protected, and, given the importance from the public health point

168 of view, this project has been approved by the Committee for the publication of the data.” The  
169 signed document can be provided upon request.

- 170 • Bauru School of Dentistry, Department of Biological Sciences, University of Sao Paulo: Sample  
171 use approved by the Institutional Review Board of the Bauru School of Dentistry, University of  
172 Sao Paulo (CAAE # 32658720.4.0000.5417)

### 173 **2.3 Study design**

174 The Propagate ring trial consisted of three components. Projects A and B engaged participant  
175 laboratories in the analysis of pooled samples disseminated from the lead laboratory (UWVL) for the  
176 purpose of evaluating the cross-laboratory performance of the direct method with parallel (identical)  
177 samples. Project C characterized the feasibility of the direct method as applied to locally sourced samples  
178 collected as part of regional public health testing efforts (**Fig 1**).



179

180 **Fig 1. Study Design for the Propagate Network.**

181 All laboratories were invited to participate in Projects A, B, and C. Logistical challenges due to  
 182 COVID-related shipping restrictions prohibited the involvement of the Malawi and Nigeria laboratories in  
 183 Projects A and B.

184 **Project A.** To confirm that all reagents arrived safely and that every laboratory could perform the  
185 direct RT-PCR method, each laboratory tested a set of eight nucleic acid samples purified from patients  
186 with COVID-19 and supplied by UWVL, which included six blinded samples (three positive and three  
187 negative), one sample identified positive, and one sample identified negative to serve as controls, plus a  
188 laboratory-supplied no-template water control. Each laboratory reviewed the results of Project A with the  
189 study coordinator to confirm that they had correctly identified 100% of the positive and negative blinded  
190 samples before proceeding.

191 **Project B.** Each laboratory then tested a set of 34 samples supplied by UWVL, including 30 blinded  
192 samples (25 positive CT and 5 negative) as well as 2 identified positive and 2 identified negative samples  
193 as controls, plus a laboratory-supplied no-template water control. Results for all Project B samples were  
194 shared with the study coordinator.

195 **Project C.** When and where possible, laboratories selected known-positive, locally collected clinical  
196 samples and known-negative samples and tested each by both their standard extraction method and the  
197 direct RT-PCR method. Results for all Project C samples were shared with the study coordinator.

## 198 **2.4 Heat inactivation**

199 To validate whether a 10-min heating step would inactivate infectious SARS-CoV-2 virus present in  
200 clinical samples, the University of Vermont team incubated high-titer stocks of authentic SARS-CoV-2 at  
201 95°C (in a heat block) or room temperature in 1.5-ml Eppendorf tubes for 10 min, spun samples briefly in  
202 a microcentrifuge, then measured the infectious units remaining in the heat-treated samples versus the  
203 untreated controls by immunofocus assay [16]. The stock virus (strain  
204 2019-nCoV/USA\_USA-WA1/2020 [WA1]) was graciously provided by Kenneth Plante and the World  
205 Reference Center for Emerging Viruses and Arboviruses at the University of Texas Medical Branch.

## 206 **2.5 Sample preparation**

207 Identical kits were prepared by UWVL and sent on dry ice to each participating laboratory. These kits  
208 included reagents for the three possible projects (Fig 1): blinded purified total nucleic acid samples plus

209 positive and negative controls (Project A); blinded unpurified patient samples plus positive and negative  
210 controls (Project B); and sufficient enzyme, buffer, primers, and probes to test all samples for Projects A  
211 and B, as well as local patient samples (Project C).

212 To make positive and negative control samples for the kits, nasopharyngeal patient samples in viral  
213 transport media were gathered from UWVL's clinical specimen collection. Three positive samples with a  
214 high concentration of SARS-CoV-2 viral RNA ( $C_t \sim 15$ ) were pooled together and then diluted 1:32 in a  
215 pool of negative samples. Aliquots of positive pooled samples ( $C_t \sim 20$ ) and of negative pooled samples  
216 were subjected to RNA extraction using a MagNA Pure LC (Roche) to generate purified positive and  
217 negative total nucleic acid for Project A.

218 The unpurified positive pool was diluted further in the negative pool to generate samples at 18  
219 specific expected  $C_t$  values ranging from 21 to 32 for Project B. These de-identified and pooled samples,  
220 both purified total nucleic acid and unpurified patient samples, were each divided into 50- $\mu$ l aliquots.  
221 Two aliquots with a  $C_t$  value of 21 were included as positive controls in each kit. A random number  
222 generator was used to determine the order of blinded samples within the kits. All samples were tested in  
223 parallel by direct RT-PCR method and by MagNA Pure LC nucleic acid extraction followed by RT-PCR  
224 at UWVL to confirm negative samples and  $C_t$  range of positive samples.

## 225 **2.6 Testing method**

226 The direct RT-PCR method is described in Bruce et al. [10]. Briefly, 20  $\mu$ l of each sample was heat  
227 treated for 10 min at 95°C then vortexed and spun down. A Master Mix was made by combining 7  $\mu$ l of  
228 water, 12.5  $\mu$ l of buffer mix, 1.5  $\mu$ l of primer/probe mix (IDT), and 1  $\mu$ l of AgPath-ID enzyme  
229 (ThermoFisher) per reaction. Either in 96-well optical PCR plates or optical strip tubes, 22  $\mu$ l of Master  
230 Mix and 3  $\mu$ l of heat-treated sample was added to each well or tube. All manipulations of clinical samples  
231 (transfer for heat inactivation as well as loading of the RT-PCR plate) were performed in a class IIA  
232 biosafety cabinet following biosafety level 2 practices. The plates or tubes were then covered with an  
233 optical adhesive cover or caps and spun down at 1000 rpm for 1 min. The RT-PCR reaction consisted of

234 10 min at 48°C for reverse transcription, 10 min at 95°C, and 40 cycles of 95°C for 15 s, followed by  
235 60°C for 45 s with fluorescence measured at the end of each cycle. All samples were tested in duplicate,  
236 with water controls on each plate. Reactions to measure the SARS-CoV-2 N-gene (using CDC N2  
237 primers and FAM-labeled probe) and human RNase P gene (using CDC RP primers and FAM-labeled  
238 probe) were carried out for each sample in parallel.

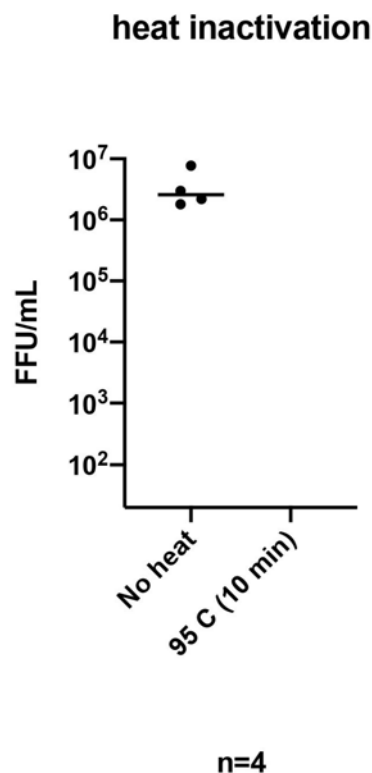
## 239 **2.7 Data collection and analysis**

240 For each sample, a mean  $C_t$  value was computed by averaging individual  $C_t$  values from all  
241 laboratories. A  $C_t$  value residual (for a given laboratory and sample) was defined as the individual  $C_t$   
242 value minus the associated mean  $C_t$  value. For data visualization, individual  $C_t$  values and residual  $C_t$   
243 values were plotted against mean  $C_t$  values. Assay specificity and sensitivity was evaluated using the  
244 negative and positive blinded samples.

## 245 **3. Results**

### 246 **3.1 Heat inactivation**

247 High-titer stocks of SARS-CoV-2 were treated at 95°C for 10 min. The stock virus had a titer of  $>10^6$   
248 focus forming units (FFUs) per milliliter. After heat treatment there was more than a 5-log drop, with no  
249 detectable foci after 10 min at 95°C (**Fig 2**).



250

251 **Fig 2. Heat Treatment Inactivates SARS-CoV-2.** Stocks of SARS-CoV-2 split into aliquots were  
252 treated at 95°C for 10 min or untreated. Viral titer was determined using a focus forming assay with an  
253 antibody recognizing the viral N protein. Measurements are in focus forming units (FFU) per milliliter ( $n$   
254 = 4 replicates). The limit of detection for this assay was 20 FFU/ml.

### 255 3.2 Project A: laboratory qualification

256 All participating laboratories correctly identified 100% of the positive ( $n = 3$ ) and negative ( $n = 3$ )  
257 blinded samples sent for purposes of confirming that the samples arrived safely and that the laboratory  
258 was able to run the direct RT-PCR method.

### 259 3.3 Project B: interlaboratory agreement using blinded samples

260 **Qualitative agreement between laboratories.** The most critical performance measures of a SARS-  
261 CoV-2 test are its sensitivity and specificity (simply put, the ability to accurately distinguish the presence  
262 versus absence of the viral RNA) and the consistency of its performance across laboratories. As an initial  
263 approach, assay specificity and sensitivity was evaluated using 5 known-negative and 25 known-positive  
264 samples that were tested in a blinded fashion by the 10 laboratories. For the five negative samples, a total

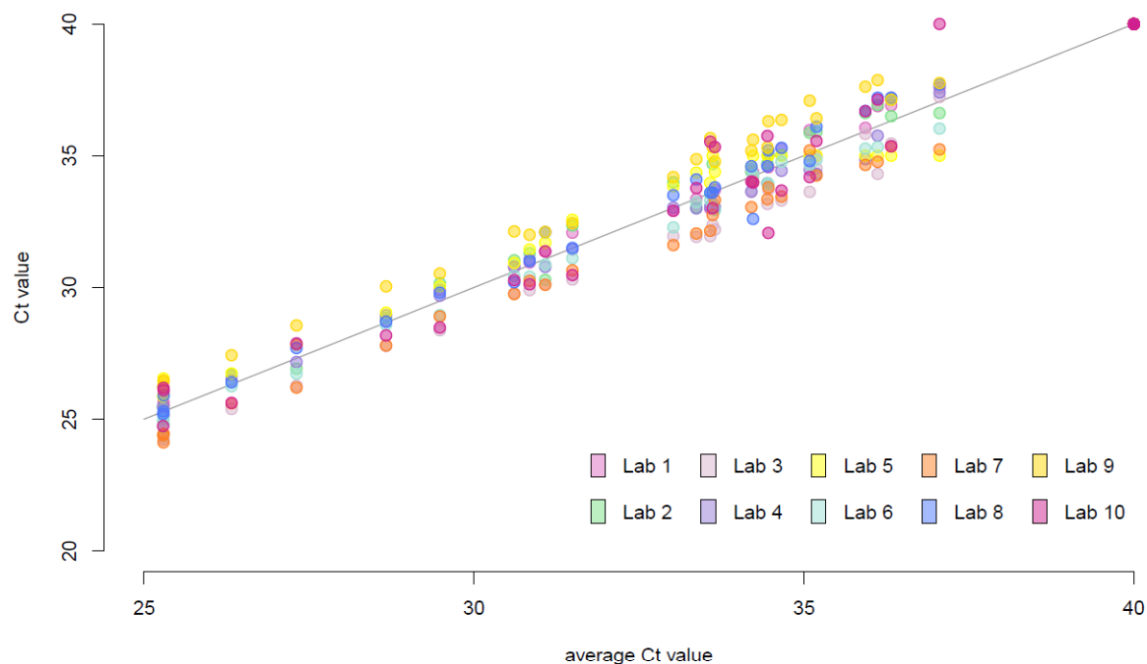
265 of 50 values were reported by the laboratories, all of which were reported as negative for virus. Thus, the  
266 assay demonstrated consistently high (100%) specificity across the laboratories for negative samples  
267 (Table 2). For the 25 positive samples, the 10 laboratories reported a total of 250  $C_t$  values. All of these  
268 but one were reported as positive. Thus, all 10 laboratories were able to correctly detect the virus in 24 of  
269 25 samples, and 9 of 10 laboratories were able to correctly detect the virus in all 25 samples using the  
270 assay, yielding consistently high [99.6% =  $(249/250) \times 100\%$ ] sensitivity across the 10 laboratories for  
271 positive samples.

272 **Table 2. Specificity and Sensitivity of the Test Based on Results From 30 Blinded Samples (5**  
273 **Negative and 25 Positive) and the 10 Laboratories.**

		Test	
		Negative	Positive
Truth	Negative	50	0
	Positive	1	249

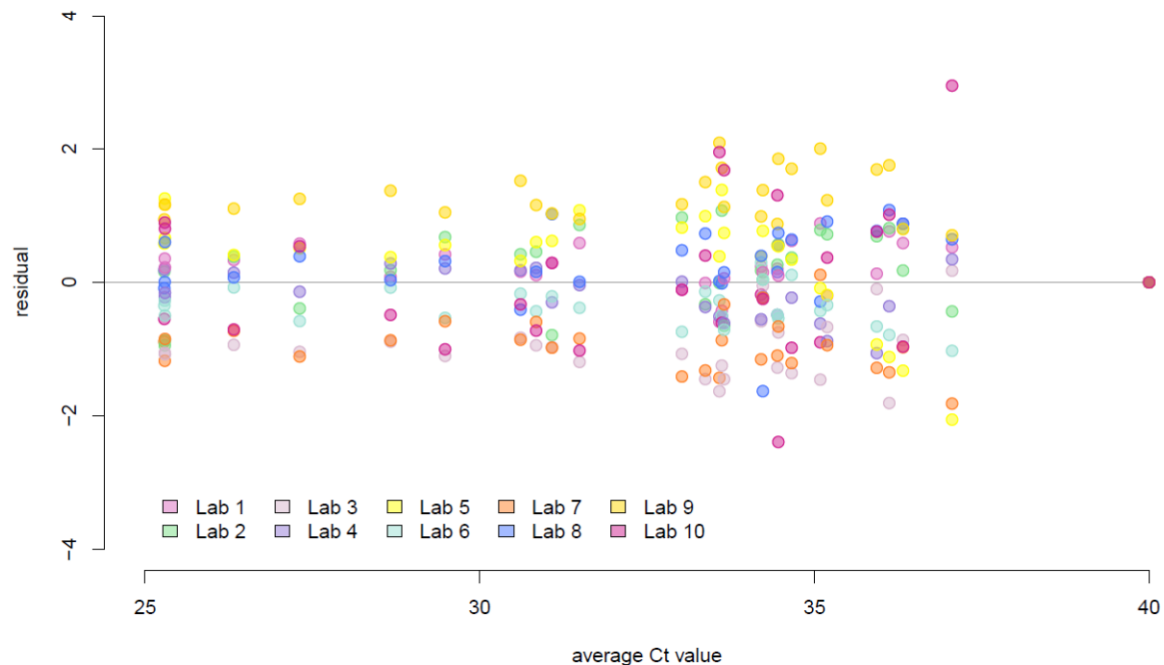
274  
275 **Quantitative agreement between laboratories.** In addition to providing a qualitative  
276 determination of the presence versus absence of virus, RT-PCR tests for SARS-CoV-2 can provide  
277 additional value by reporting their  $C_t$  value, which serves as a proxy for the amount of viral RNA present.  
278 We therefore investigated the  $C_t$  values reported for the blinded positive samples tested by the  
279 participating laboratories. In general, the agreement between  $C_t$  values from different laboratories was  
280 good, with tighter agreement at lower average  $C_t$  (higher viral loads) than at higher average  $C_t$  (lower  
281 viral loads; Fig 3).





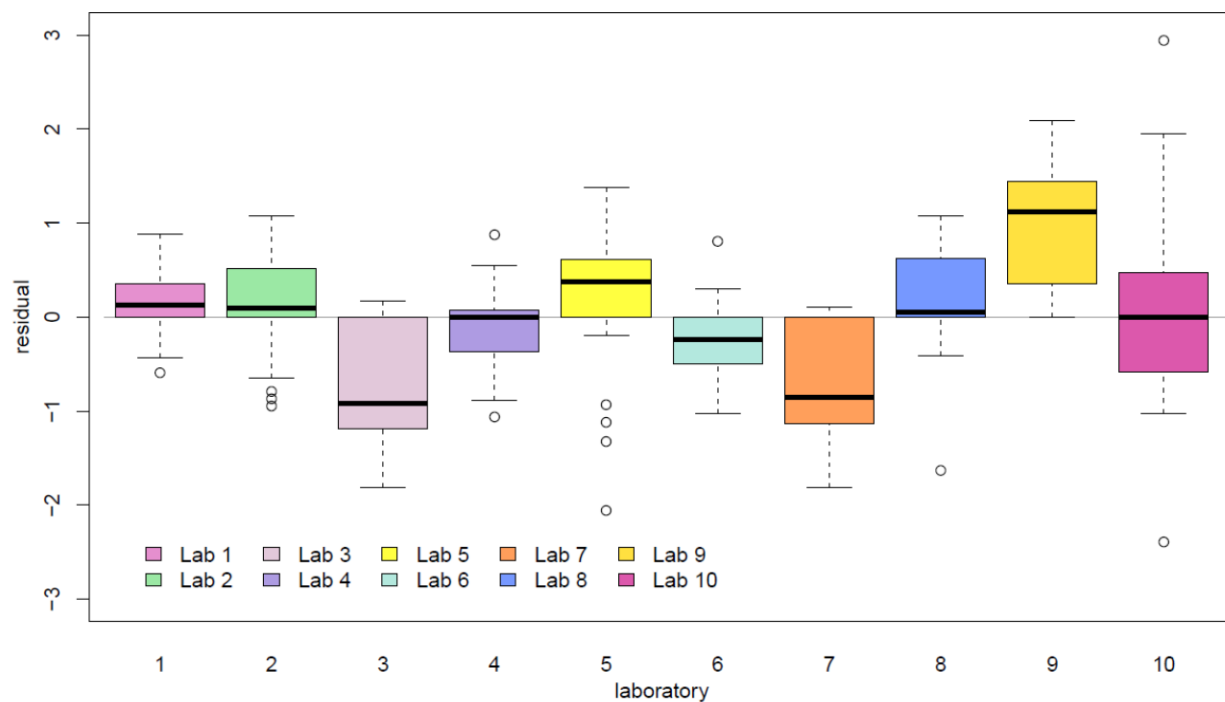
282  
283 **Fig 3. High Interlaboratory Agreement in  $C_t$  Values for Blinded Clinical Samples in Project B.**  $C_t$   
284 values plotted against the sample-specific average  $C_t$  values from the 10 laboratories. The solid line  
285 indicates the line of equation  $y = x$ . Each color indicates one laboratory; the same color is used to identify  
286 each laboratory in all subsequent figures.

287 We then evaluated the overall quantitative performance of each individual laboratory against the  
288 sample-specific average  $C_t$  value as determined by all 10 laboratories. The  $C_t$  value residual for a given  
289 laboratory and sample was defined as the  $C_t$  value for the corresponding laboratory and sample minus the  
290 sample-specific average  $C_t$  value; the narrower their distribution within a laboratory, the more consistent  
291 the relationship of  $C_t$  values from the laboratory with the average  $C_t$  value from all laboratories. Residual  
292  $C_t$  values had overall similar variability across samples and were minimally affected by the actual viral  
293 load (**Fig 4**). The residuals appeared to be centered around zero for most laboratories (**Fig 5**), with the  
294 exception of laboratories 3 and 7, for which residuals appeared systematically negative (indicative of  $C_t$   
295 values consistently lower than average), and laboratory 9, in which residuals tended to be positive  
296 (indicative of  $C_t$  values consistently higher than average). There was no evidence that the assay had a  
297 lower sensitivity in this particular laboratory.



298

299 **Fig 4. Distribution of  $C_t$  Residuals Relative to Sample-Specific Average  $C_t$  Values.** Residuals were  
300 consistent between laboratories regardless of viral load. Residuals were plotted against sample-specific  
301 average  $C_t$  values. Each colored dot represents a different participating laboratory per legend.

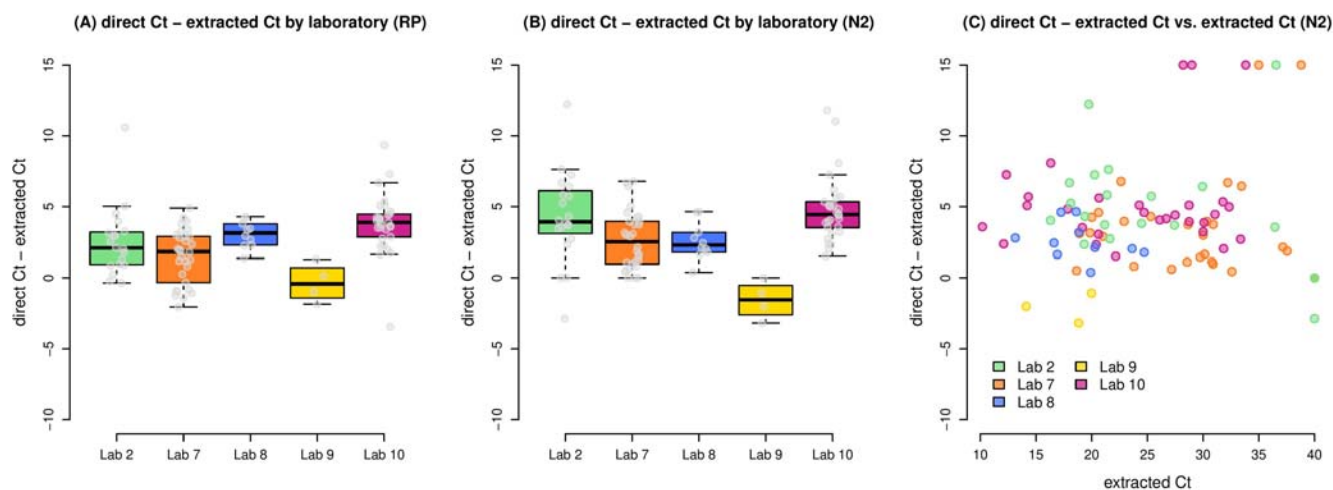


302

303 **Fig 5. Distribution of  $C_t$  Value Residuals Plotted by Laboratory.**  $C_t$  value residuals were calculated as  
304 the  $C_t$  values minus the sample-specific average  $C_t$  value.

### 305 3.4 Project C: application of direct RT-PCR on locally collected clinical samples

306 Seven Propagate partner laboratories conducted side-by-side comparisons of direct RT-PCR and  
307 extraction RT-PCR on clinical samples collected from their regions. For four laboratories (2, 7, 8, and  
308 10), these studies demonstrated average losses of sensitivity of between 1.5 and 3.8 cycles in RP  $C_t$  value  
309 (Fig 6a; Table 3) and between 2.6 and 4.8 cycles in N2  $C_t$  value (Fig 6b; Table 3), compared with direct  
310 RT-PCR. For RP, this resulted in no failure to detect any sample from any of the four laboratories. For  
311 samples in which N2 was detectable by both direct and extraction RT-PCR, the difference in  $C_t$  values  
312 between the two methods did not correlate with the  $C_t$  value obtained by either method (Fig 6c).  
313 However, a few samples (6 of 93) that were detected between  $C_t$  values of 28 and 39 by extraction RT-  
314 PCR were undetectable by direct RT-PCR, while other samples in that range were still detectable by the  
315 same laboratories (Fig 6c).



316  
317 **Fig. 6. Comparison of Direct Versus Extracted PCR Analyses for Locally Sourced Clinical Samples**  
318 **(Project C).** The left (A) and center (B) boxplots illustrate the difference between direct and extracted  $C_t$   
319 values in the five laboratories participating in Project C for the RP and N2 genes respectively. The right  
320 boxplot (C) illustrates the difference between direct and extracted  $C_t$  values plotted against the extracted  
321  $C_t$  value, in five laboratories.

322

323 **Table 3. Difference in Sensitivity of Direct RT-PCR and Extraction RT-PCR Methods on Local**  
324 **Samples From Five Laboratories.**

	<b>Lab 2</b>	<b>Lab 7</b>	<b>Lab 8</b>	<b>Lab 9</b>	<b>Lab 10</b>	<b>All labs</b>
Samples ( <i>n</i> )	20	30	10	4	29	93
Direct, extracted C <sub>t</sub> (mean ± SD)						
RP	2.5 ± 2.5	1.5 ± 1.9	3.1 ± 0.9	-0.3 ± 1.4	3.8 ± 2.2	2.5 ± 2.3
N2	4.3 ± 3.2	2.6 ± 2.0	2.6 ± 1.3	-1.6 ± 1.4	4.8 ± 2.3	3.4 ± 3.0

325

326 For laboratory 9, direct RT-PCR yielded lower Ct values for both RP and N2 than extraction RT-  
327 PCR, with an average difference of -0.3 cycles and -1.6 cycles, respectively (Table 3). The reason for  
328 this unexpected result is not clear, but it may have been related to the laboratory's observation that  
329 samples became "highly viscous" after the heating step (an observation not reported in any of the other  
330 participating laboratories). As with any method, the authors recommend internal validation of the  
331 approach prior to clinical implementation.

332 For two laboratories, direct amplification of both N2 and RP was unsuccessful in all samples,  
333 including for samples with low N2 C<sub>t</sub> values (high viral loads) as measured by extraction RT-PCR. These  
334 samples were later determined to have been collected in transport media containing ingredients that were  
335 inhibitory to PCR, including charcoal and guanidine (e.g., ManTacc UTM and Jiangsu Rongye  
336 Technology LinkGen media were reported as incompatible). Information on the brand/type of viral  
337 transport media was not available for all samples used in Project C (this information is often not reported  
338 with swabbed samples as provided to analysis laboratories). However, the following media were  
339 specifically identified as compatible with this method (Hardy viral transport media, saline, and phosphate-  
340 buffered saline).

341 Overall, the direct approach worked effectively to detect samples deemed positive by standard RT-  
342 qPCR when samples were collected in media lacking charcoal or guanine.

## 343 **4. Discussion**

344 This study confirms that the direct RT-qPCR method, initially described by Bruce et al. [10], has the  
345 potential to meaningfully contribute to global efforts to detect and contain the COVID-19 pandemic. This  
346 study provides evidence that the direct RT-qPCR method is an efficient, reliable, and achievable method  
347 for detection of SARS-CoV-2. Although the reproducibility of the method has been reported in single-  
348 laboratory studies previously, this study is the first to demonstrate that a globally diverse set of  
349 laboratories operating with different equipment, clinical sample collection and handling conditions,  
350 resource limitations, and operating practices can successfully implement the method.

351 As described above, when centrally disseminated pooled samples were evaluated with a common  
352 Master Mix and primers/probes (Projects A and B), the Propagate partner laboratory results were >99.5%  
353 concordant (all negatives and all but one positive correctly identified and strong agreement on  $C_t$  values).  
354 This result demonstrates the robustness of the methodology. Although all Propagate partner laboratories  
355 had prior experience with standard RNA extraction RT-PCR analysis of SARS-CoV-2 test samples, they  
356 were able to adopt and implement the direct method on Project A and B samples with only a minimum of  
357 instruction (a brief written protocol and a few minutes of discussions via web meeting), showing that the  
358 method is easily transferable. Due to halts and delays in air shipments, the partner laboratories in Malawi  
359 and Nigeria were unable to receive or analyze the Project A/B sample kits. While this was unfortunate, it  
360 is emblematic of the challenges that the African continent (among others) continues to face in receiving  
361 needed laboratory supplies and the importance of resource-sensitive methods development efforts such as  
362 these.

363 In Project C of this study, Propagate partner laboratories were encouraged to use their own extraction  
364 methods and locally collected samples with RT-qPCR reagents supplied by UWVL to compare results  
365 from the direct method versus standard extraction-based PCR. The majority of the participating partner  
366 laboratories were successfully able to apply the method and reliably detect RT-PCR-positive samples.  
367 The importance of “ground testing” new methods was made evident when some of the laboratories were

368 unable to detect any signal (N2 or RP) following the direct method despite using high-titer positive  
369 samples as detected by standard methods. Laboratories experiencing this problem in some cases were  
370 working with samples collected in commercial viral transport media that were often found to contain  
371 charcoal or in inactivating media such as those containing guanidine. We hypothesize that these are  
372 inhibitory to the RT-PCR reaction in the absence of an extraction phase. Similar inhibitory outcomes have  
373 been subsequently identified by other laboratories [11, 17]. In other cases, the constituents of media were  
374 unknown, so we were not able to hypothesize why the direct method was incompatible. We recommend  
375 that laboratories seeking to employ the direct method for SARS-CoV-2 detection should conduct a small  
376 pilot run (comparing results from direct and full PCR analyses on the same samples) to ensure that sample  
377 media are compatible with this method. This pilot should be replicated if/when sample collection methods  
378 or media are changed.

379       The success of this ring trial is of critical importance given the growing calls for COVID-19  
380 screening as a containment strategy. The growing pandemic requires that we supplement definitive  
381 clinical testing with scalable screening strategies that generate efficient, reliable results that can readily  
382 inform public health action (e.g., quarantine and isolation) [2]. Non-PCR immunoassay antigen screening  
383 kits have decreased sensitivity as compared to standard PCR but are widely utilized depending on the  
384 country's COVID-19 pandemic testing strategy [18]. As anticipated per previous studies, the direct  
385 method as applied to SARS-CoV-2 results in some loss in sensitivity compared to standard PCR. One  
386 primary explanation for this observation is that RNA extraction typically concentrates RNA present in the  
387 clinical sample (by eluting the sample in a smaller volume. In addition, there is a low level of inhibition  
388 seen in clinical NP samples loaded directly into an RT-PCR reaction, and the sensitivity of the approach  
389 drops when more than 3 ul of patient sample is used [10]. However, this loss is of lower significance to  
390 the method's potential value as a public health screening tool. The direct method succeeds in all of the  
391 areas of greatest contemporary need: 1) it reliably detects samples with RNA levels correlating to the  
392 presence of live virus (and thus most potential for infectivity), 2) it provides the potential to optimize  
393 throughput and reduce costs/logistics for SARS-CoV-2 testing, 3) it is an open-access methodology with

394 no commercial barriers or de novo equipment investment hurdles, and 4) it can be readily adopted by  
395 most current public health or clinical laboratories with experience handling infectious samples [14, 15].

396 We believe that the direct RT-qPCR method for SARS-CoV-2 screening is ripe for adoption in  
397 laboratories seeking to reduce turnaround time for processing samples, experiencing challenges in  
398 accessing extraction reagents, seeking to decrease costs, and/or looking to reduce the use, handling, and  
399 disposal of chemicals in their laboratory. We do not propose this method as a substitute for samples  
400 requiring ultrasensitive detection. As with the adoption of any new method, appropriate validation must  
401 be conducted by the host laboratory. As standard RNA extraction reagents for PCR can cost \$5–\$6 USD  
402 per extraction and millions of these tests are performed each day around the world, the potential savings  
403 are significant. The utilization of this method could lead to greater testing coverage of individuals per  
404 dollar invested, or alternatively a larger number of examinations per individual, either of which would  
405 allow for the follow up of suspected cases.

406 The opportunity and feasibility described here is not simply theoretical. At the time of publication,  
407 several of the Propagate Network partner laboratories (Brazil, France, United States) are promoting or  
408 exploring the broad-scale adoption and implementation of this method for ongoing SARS-CoV-2 public  
409 health screening efforts in their regions [19]. Additionally, in October 2020, the Infectious Disease  
410 Diagnostic Laboratory at the Children’s Hospital of Philadelphia implemented an extraction-free protocol  
411 for routine diagnostic testing of SARS-CoV-2 (*personal communication*). In the 3 months following  
412 implementation, >40,000 samples were tested using this workflow. The laboratory observed several  
413 critical advantages with this approach, including dramatically reduced extraction reagent costs and a  
414 halving of the average laboratory turnaround time, despite increasing test volumes. Further, the  
415 independence from specialized extraction reagents for routine testing alleviated pressure on supply chains  
416 to meet the increased demand. These same positive impacts on testing efficiency are expected to apply to  
417 other laboratories that adopt the method.

418 While no current testing or screening method is optimal to all situations, the direct method should be  
419 considered as a viable, fit-for-purpose resource to address the growing need for population monitoring

420 during a challenging vaccination rollout and amidst the emergence of increasingly virulent strains of  
421 SARS-CoV-2.

422 In addition to the valuable data described above, the global viral testing network established for this  
423 study exemplifies the feasibility and importance of establishing transparent, open-access engagements in  
424 the public health sciences. Following this study, the Propagate Network will continue to serve as a forum  
425 for scientific information exchange and collaboration in the face of future pandemics or health challenges.

## 426 **5. Conclusions**

427 The need for testing for SARS-CoV-2 continues and in many regions is increasing dramatically. This  
428 study provides multisite evidence that the direct RT-PCR method can be employed for the detection of  
429 SARS-CoV-2 viral RNA with the omission of the RNA extraction step and its associated extraction  
430 reagents. This effort represents the first step toward simplifying detection of SARS-CoV-2 viral RNA for  
431 the global research community by leveraging evidence-based guidance such as the results present herein.  
432 Many options for detecting SARS-CoV-2 have emerged recently, such as antibody testing, saliva testing,  
433 and point-of-care testing, which taken together support the urgent need for actionable viral testing. This  
434 work lays the foundation for an adoptable method for future viral outbreaks.

## 435 **Acknowledgments**

436 The authors thank and acknowledge Vianney Leclercq (LBM BIOESTEREL, Mouans-Sartoux,  
437 France) for assistance in sample analysis and Bob Bruneau (University of Washington, USA) for  
438 coordinating international shipping of samples and reagents. The views expressed in this article are those  
439 of the author(s) and do not necessarily represent the views or the policies of the U.S. Environmental  
440 Protection Agency.

## 441 **Funding**

442 A grant from HESI to the University of Washington supported preparation and shipment of Project A  
443 and B samples to Propagate partner laboratories. Fondecyt provided funding (grant 1201240) for the work  
444 of C. Vial and P. Vial. Grants from the National Institutes of Health National Institute of Allergy and



445 Infectious Diseases (5R01AI129518 and UM1AI068635) and a gift from the MJ Murdock Charitable  
446 Trust helped to support the work of University of Washington and Fred Hutchinson Cancer Research  
447 Center researchers.

## 448 **References**

- 449 1. World Health Organization. COVID-19 strategy update [Internet]. 2020 [cited 24 March 2021].  
450 Available from: <https://www.who.int/publications/m/item/covid-19-strategy-update>
- 451 2. Mina MJ, Parker R, Larremore DB. Rethinking COVID-19 test sensitivity - a strategy for  
452 containment. *N Engl J Med*. 2020;383:e120. doi: 10.1056/NEJMp2025631.
- 453 3. Pettit SD, Jerome KR, Rouquié D, Mari B, Barbry P, Kanda Y, et al. 'All In': a pragmatic framework  
454 for COVID-19 testing and action on a global scale. *EMBO Mol Med*. 2020;12:e12634. doi:  
455 10.15252/emmm.202012634.
- 456 4. World Health Organization. Laboratory testing for coronavirus disease 2019 (COVID-19) in  
457 suspected human cases. Interim guidance 2 March 2020 [Internet]. 2020 [cited 24 March 2021].  
458 Available from: <https://apps.who.int/iris/handle/10665/331329>
- 459 5. Corman VM, Landt O, Kaiser M, Molenkamp R, Meijer A, Chu DK, et al. Detection of 2019 novel  
460 coronavirus (2019-nCoV) by real-time RT-PCR. *Euro Surveill*. 2020;25:2000045. doi: 10.2807/1560-  
461 7917.Es.2020.25.3.2000045.
- 462 6. U.S. Centers for Disease Control and Prevention. CDC 2019-novel coronavirus (2019-nCoV) real-  
463 time RT-PCR diagnostic panel for emergency use only: instructions for use [Internet]. 2020 [cited 24  
464 March 2021]. Available from: <https://www.fda.gov/media/134922/download>
- 465 7. American Society for Microbiology. Supply shortages impacting COVID-19 and non-COVID testing  
466 [Internet]. 2021 [cited 24 March 2021]. Available from:  
467 <https://asm.org/Articles/2020/September/Clinical-Microbiology-Supply-Shortage-Collecti-1>
- 468 8. Millan C, Navarro A, Kueffner S. Test scarcity means Latin America is 'walking blindly' on virus  
469 [Internet]. 2020 [cited 24 March 2021]. Available from:

- 470 [https://www.bloomberg.com/news/articles/2020-04-08/test-scarcity-makes-tracking-virus-in-latin-](https://www.bloomberg.com/news/articles/2020-04-08/test-scarcity-makes-tracking-virus-in-latin-america-a-crapshoot)  
471 [america-a-crapshoot](https://www.bloomberg.com/news/articles/2020-04-08/test-scarcity-makes-tracking-virus-in-latin-america-a-crapshoot)
- 472 9. Soy A. Lack of Covid-19 testing undermines Africa's 'success' [Internet]. 2020 [cited 24 March  
473 2021]. Available from: <https://www.bbc.com/news/world-africa-52801190>
- 474 10. Bruce EA, Huang ML, Perchetti GA, Tighe S, Laaguiby P, Hoffman JJ, et al. Direct RT-qPCR  
475 detection of SARS-CoV-2 RNA from patient nasopharyngeal swabs without an RNA extraction step.  
476 PLoS Biol. 2020;18:e3000896. doi: 10.1371/journal.pbio.3000896.
- 477 11. Smyrlaki I, Ekman M, Lentini A, Rufino de Sousa N, Papanicolaou N, Vondracek M, et al. Massive  
478 and rapid COVID-19 testing is feasible by extraction-free SARS-CoV-2 RT-PCR. Nat Commun.  
479 2020;11:4812. doi: 10.1038/s41467-020-18611-5.
- 480 12. Arons MM, Hatfield KM, Reddy SC, Kimball A, James A, Jacobs JR, et al. Presymptomatic SARS-  
481 CoV-2 Infections and transmission in a skilled nursing facility. N Engl J Med. 2020;382:2081-2090.  
482 doi: 10.1056/NEJMoa2008457.
- 483 13. La Scola B, Le Bideau M, Andreani J, Hoang VT, Grimaldier C, Colson P, et al. Viral RNA load as  
484 determined by cell culture as a management tool for discharge of SARS-CoV-2 patients from  
485 infectious disease wards. Eur J Clin Microbiol Infect Dis. 2020;39:1059-1061. doi: 10.1007/s10096-  
486 020-03913-9.
- 487 14. van Kampen JJA, van de Vijver DAMC, Fraaij PLA, Haagmans BL, Lamers MM, Okba N, et al.  
488 Shedding of infectious virus in hospitalized patients with coronavirus disease-2019 (COVID-19):  
489 duration and key determinants. medRxiv:2020.2006.2008.20125310 [Preprint]. 2020 [cited 24 March  
490 2021]. Available from: <http://medrxiv.org/content/early/2020/06/09/2020.06.08.20125310.abstract>
- 491 15. Wölfel R, Corman VM, Guggemos W, Seilmaier M, Zange S, Müller MA, et al. Virological  
492 assessment of hospitalized patients with COVID-2019. Nature. 2020;581:465-469. doi:  
493 10.1038/s41586-020-2196-x.
- 494 16. Graham NR, Whitaker AN, Strother CA, Miles AK, Grier D, McElvany BD, et al. Kinetics and  
495 isotype assessment of antibodies targeting the spike protein receptor-binding domain of severe acute

- 496 respiratory syndrome-coronavirus-2 in COVID-19 patients as a function of age, biological sex and  
497 disease severity. *Clin Transl Immunology*. 2020;9:e1189. doi: 10.1002/cti2.1189.
- 498 17. Kirkland PD, Frost MJ. The impact of viral transport media on PCR assay results for the detection of  
499 nucleic acid from SARS-CoV-2. *Pathology*. 2020;52:811-814. doi: 10.1016/j.pathol.2020.09.013.
- 500 18. Eshghifar N, Busheri A, Shrestha R, Beqaj S. Evaluation of analytical performance of seven rapid  
501 antigen detection kits for detection of SARS-CoV-2 virus. *Int J Gen Med*. 2021;14:435-440. doi:  
502 10.2147/ijgm.S297762.
- 503 19. Fassy J, Lacoux C, Leroy S, Noussair L, Hubac S, Degoutte A, et al. Versatile and flexible  
504 microfluidic qPCR test for high-throughput SARS-CoV-2 and cellular response detection in  
505 nasopharyngeal swab samples. medRxiv:2020.2011.2009.20228437 [Preprint]. 2020 [cited 24 March  
506 2021]. Available from: <https://www.medrxiv.org/content/10.1101/2020.11.09.20228437v1>
- 507