

1 **Title:** Racial and Ethnic Inequities in Mortality During Hospitalization for Traumatic Brain  
2 Injury: A Call to Action

3  
4 **Authors:** Emma A. Richie<sup>1\*</sup>, Joseph G. Nugent<sup>1</sup>, MHS, & Ahmed M. Raslan<sup>1</sup>, MD, FAANS

5  
6 **Affiliations:**

7 <sup>1</sup>Oregon Health & Science University, Department of Neurological Surgery, Portland, OR,  
8 United States of America

9  
10 **Correspondence:**

11 Emma A. Richie  
12 richie@ohsu.edu

13  
14 **Keywords:** mortality, disparities, inequities, TBI, neurotrauma, race

15  
16 **Abstract**

17  
18 The health disparities which drive inequities in health outcomes have long plagued our already  
19 worn healthcare system and are often dismissed as being a result of social determinants of health.  
20 Herein, we explore the nature of these inequities by comparing outcomes for racial and ethnic  
21 minority patients suffering from traumatic brain injury (TBI). We retrospectively reviewed all  
22 patients enrolled in the Trauma One Database at the Oregon Health & Science University  
23 Hospital from 2006 to October 2017 with an abbreviated injury scale (AIS) scale for the head or  
24 neck greater than 2. Racial and ethnic minority patients were defined as non-White or Hispanic.  
25 A total of 6,352 patients were included in our analysis with 1,504 in the racial and ethnic  
26 minority cohort vs. 4,848 in the non-minority cohort. A propensity score (PS) model was  
27 generated to account for differences in baseline characteristics between these cohorts to generate  
28 1,500 matched pairs. The adjusted hazard ratio for in-hospital mortality for minority patients was  
29 2.21 (95% Confidence Interval (CI) 1.43-3.41,  $p < 0.001$ ) using injury type, probability of  
30 survival, and operative status as covariates. Treating patients under our care is our greatest  
31 privilege and responsibility as physicians. As such, we have a societal duty to recognize and  
32 accept that the effects of structural racism have taken hold of our patients' health long before  
33 they arrive in our trauma bays, ICU beds, and operating tables. These disparities permeate our  
34 society and contribute to inequitable health outcomes, and we must take action to identify the  
35 factors which perpetuate this disproportionate suffering. Simply treating the minority of patients  
36 who require surgical intervention or clinical consultation is not enough. Our roles demand that  
37 we recognize these larger social factors acting upstream on our patients before they enter our  
38 fractioned healthcare system which often fosters the very mistrust that hides them from our  
39 otherwise watchful eyes in the first place. What shape, if any, these health inequities take among  
40 other nations will enable us to better understand the root of these problems in our society and  
41 allow us to work together toward equitable healthcare for all victims of traumatic injury.

42 **1 Introduction**

43 Structural disparities propagated against racial and ethnic minorities have long been known to  
44 drive inequities in health outcomes in the US yet are often dismissed as an unfortunate yet

45 unavoidable consequences of what has been disguised as the social determinants of health.  
46 However, many of these inequities are formed long before our patients ever step foot into a  
47 healthcare facility and stem not from individual poor health decisions but from decades of  
48 structural racism and systematic oppression which leave minority patients at a disadvantage for  
49 health outcomes even from before birth<sup>(1-3)</sup>. (It is important to state clearly at this point that we  
50 will discuss race and ethnicity not as biologically-based separations of persons but as socially-  
51 formed systematic manners of categorizing persons based on culture, geographic origin,  
52 language, etc. so as to provide financial, social, and political advantage over specific groups of  
53 persons with a long and evidence-based history of such action<sup>(3-8)</sup>.) These systemic factors have  
54 been extensively researched in the fields of public health, sociology, psychology, and more to  
55 demonstrate significant negative impacts on a minority persons lifelong risk for medical and  
56 psychological trauma<sup>(1-3, 9)</sup>.

57 Specifically in the field of trauma, these inequities are then exacerbated by ongoing external  
58 factors such as insurance, access to level I trauma centers, mechanism of injury, time to surgical  
59 intervention, staffing of skilled providers, access to post-acute care and rehabilitation, and  
60 community or financial support<sup>(1, 10-14)</sup>. In neurosurgical trauma, the crux of disease burden lies  
61 in traumatic brain injury (TBI) which is increasingly becoming a more prevalent global medical  
62 issue with devastating effects on both personal and healthcare sequelae<sup>(15-20)</sup>. As with other  
63 healthcare fields, neurosurgery and neuro-trauma are not immune to the adverse effects of  
64 structural racism on racial and ethnic inequities<sup>(10, 21-24)</sup>. Misguided past research in this field has  
65 failed to identify or call out the specific role of sociological and systemic factors that influence  
66 these pervasive, persistent, and problematic disparities of health outcomes for our minority  
67 patients. In this study, we explore the racial and ethnic inequities in mortality during  
68 hospitalization following traumatic brain injury and will engage both a sociological and medical  
69 perspective to call to action a change in practice towards a more expansive and sympathetic  
70 understanding of the factors involved in minority health outcomes in neuro-trauma.

## 71 **2 Materials and Methods**

### 72 **2.1 Study design and setting**

73 This study is a retrospective review of all patients entered into the Trauma One Database  
74 established in 2006 at the Oregon Health & Science University Hospital (OHSU), one of the two  
75 Level I Trauma centers in the state of Oregon. For our research, we included all patients  $\geq 16$   
76 years-old entered into the system from 2006 to October of 2017. The dataset used for analysis  
77 contained all patient demographic and insurance characteristics, details regarding the mechanism  
78 of injury (MOI), treatments provided in the pre-hospital setting and throughout the hospital stay,  
79 comorbidities at the time of presentation, discharge disposition, and overall complications. This  
80 study follows the Strengthening the Reporting of Observational Studies in Epidemiology  
81 (STROBE) reporting guidelines, and was approved by the OHSU Institutional Review Board<sup>(25)</sup>.

### 82 **2.2 Measurements and Outcomes**

83 TBI severity was classified according to the patient's Glasgow Coma Scale (GCS) score on  
84 arrival with the following classifications: severe as GCS  $<8$ , moderate as 8-12, and mild as  $\geq 13$ .

85 Minor trauma was defined by an Injury Severity Score (ISS) of  $\leq 15$ . Racial and ethnic minority  
86 patients were defined as identifying as any non-White race or as being of Hispanic ethnicity.  
87 Mechanism of injury categories were assigned based on the Abbreviated Injury Scale (AIS), ISS,  
88 and ICD-9-CM, or ICD-10-CM codes<sup>(26)</sup>. Probability of survival is calculated at our institution  
89 using the Trauma Injury Severity Score methodology with a weighted formula comprising of  
90 ISS, age, and Revised Trauma Score.

91 The primary outcome of interest was in-hospital mortality stratified by racial and ethnic minority  
92 status. The secondary outcome was the trend in mortality classified by arrival year, injury type,  
93 and the presence of work-related injuries.

## 94 **2.3 Statistical Analysis**

95 Continuous variables were described using means and standard deviations (SD), and compared  
96 between groups using a two-sample Student's t-test. Dichotomous and categorical variables were  
97 reported using counts and percentages and compared using Fisher's exact test.

98 Due to the inherent potential for selection bias in this observational retrospective study, and to  
99 account for differences in baseline socioeconomic and demographic characteristics, a propensity-  
100 score (PS) matching model was employed. Age, sex, injury mechanism, and primary payor were  
101 included as the covariates in this final model, consistent with what has been done in the literature  
102 previously when examining racial and ethnic disparities<sup>(27, 28)</sup>. Matching with a 1:1 ratio using  
103 nearest neighbor methodology was then performed using MatchIt Package in R, version 4.1.0<sup>(29)</sup>.  
104 Balance of baseline covariates and region of common support was then assessed using absolute  
105 standardized mean differences, jitter plots and histograms, provided in the supplementary  
106 materials.

107 A multivariate Cox Proportional Hazards regression model was then created using an iterative  
108 combined forward and backward stepwise selection procedure from the candidate covariates for  
109 the propensity-matched cohorts. Assumptions required for proportional hazards regression were  
110 assessed numerically for each covariate, and graphically by the plotting of scaled Schoenfeld  
111 residuals. The final model included injury type, probability of survival, and operative status as  
112 covariates. Since the AIS score covariate was found to violate the assumption of proportional  
113 hazards, the final model was stratified by this covariate. Goodness of fit of each model was then  
114 assessed using Cox-Snell residuals.

115 A p-value  $< 0.05$  was considered to be statistically significant. All analyses were performed  
116 using R software, version 4.0.4 (R Foundation for Statistical Computing, Vienna, Austria). The  
117 final analysis was confirmed using Stata, version 16.1 (StataCorp, College Station, Texas).

## 118 **3 Results**

### 119 **3.1 Patient demographics**

120 There was a total of 6,352 patients included in the Trauma One database with 1,504 included in  
121 the racial/ethnic minority cohort and 4,848 patients in the White/non-Hispanic cohort.. The  
122 clinical characteristics of the patients and propensity-matched patients are shown in Tables 1A  
123 and 1B, respectively. Following statistical PS matching, the maximum number of participants in  
124 each group was 1,504 (approximately equivalent to the total number of patients in the minority  
125 group).

126 Overall, the patients were 68.5% male and 31.5% female. There was a statistically significant  
127 difference in sex between the White/non-Hispanic and the minority cohorts with males making  
128 up 67.3% of the White/non-Hispanic group vs. 72.4% of the minority cohort ( $p < 0.001$ ). The  
129 average age of all patients was 53.25 years old. There was a statically significant difference in  
130 the average ages based on cohorts with that of the White/non-Hispanic group as 54.90 years old  
131 and of the minority group as 47.91 years old ( $p < 0.001$ ). By age group, the highest incidence of  
132 TBI overall and in the White/non-Hispanic cohort occurred in the 55-64 year old group (14.9%  
133 of overall patients, 15.8 % of White/non-Hispanic patients) while the highest incidence for the  
134 minority cohort occurred in the 15-24 year old group (19.6% of minority patients).

135 Overall, there were 7 different categories for race/ethnicity included in the demographics of the  
136 database: White (86.9%), Black/African American (1.8%), American Indian or Alaskan Native  
137 (1.1%), Asian (2.5%), Hispanic/Latino (6.2%), Pacific Islander or Native Hawaiian (0.3%), and  
138 Other (1.2%). Of the minority sub-group, the patients were 13.4% Black, 7.9% American  
139 Indian/Alaskan Native, 19% Asian, 46.2% Hispanic/Latino, 2.0% Pacific Islander/Native  
140 Hawaiian, and 9.2% Other.

### 141 **3.2 Mortality and adverse outcomes**

142 The overall in-hospital mortality rate was 9.9% with a statistically significant difference between  
143 in-hospital mortality rate of White/non-Hispanic patients (8.5%) and the in-hospital mortality  
144 rate of minority patients (14.6%) ( $p < 0.001$ ). The adjusted hazard ratio for in-hospital mortality  
145 for minority patients in the propensity-matched cohort was 2.21 (95% Confidence Interval (CI)  
146 1.43, 3.43) with  $p < 0.001$  (Table 2). Examination of the absolute standardized mean differences,  
147 and of the region of common support indicated effective propensity-score matching  
148 (Supplementary Figure 1, Supplementary Figure 2). There was no statistically significant  
149 difference in the overall probability of survival prior to propensity matching, however the  
150 Kaplan-Meier curve of both the non-propensity matched and propensity matched patients (Figure  
151 1A, 1B) demonstrates a visibly lower survival probability in the minority group. The overall  
152 length of hospital stay was 7.70 days with a larger standard deviation in the minority group  
153 (12.08 days) vs the White/non-Hispanic group (10.65 days) ( $p = 0.435$ ). The length of ICU stay  
154 in all groups was an average of 3.88 days ( $p = 0.966$ ). There was no statistically significant  
155 difference in discharge disposition, with 58.5% overall discharged to home, 58.5% of White/non-  
156 Hispanic patients discharged home, and 60.0% of minority patients discharged home. There were  
157 slight differences in discharges to Skilled Nursing Facilities (SNFs) (17.9% of White/non-  
158 Hispanic patients vs 12.2% of minority patients), Acute Care Facility-Hospitals (1.6% of  
159 White/non-Hispanic patients vs 0.8% of minority patients), and Rehabilitation Facilities (5.2% of  
160 White/non-Hispanic patients vs 4.7% of minority patients).

### 161 3.3 Severity and type of disease at presentation

162 Out of all TBI admissions, 96.5% were due to blunt trauma and 3.5% were due to penetrating  
163 trauma. There was a statistically significant difference between percentage of blunt vs  
164 penetrating trauma with only 2.9% of trauma being penetrating in the White/non-Hispanic group  
165 while 5.3% of trauma was penetrating in the minority group ( $p < 0.001$ ). In all patients, the most  
166 common mechanism of injury was fall (47.5%), followed by occupant in a motor vehicle crash  
167 (MVC) (17.0%). In the White/non-Hispanic group, this trend was similar with 50% of trauma  
168 being due to fall and 15.8% being due to MVC; however, in the minority group, although the  
169 trend was similar, the percentage of fall (39.3%) was lower and the percentage of MVC trauma  
170 (20.9%) was higher than the White/non-Hispanic group. There was a statistically significant  
171 difference in work-relatedness of injury with 4.7% of the minority group's injuries being due to  
172 work vs only 3.2% of the White/non-Hispanic group ( $p = 0.011$ ).

173 There were many statistically significant differences in severity of presenting injury between the  
174 White/non-Hispanic group and the minority group. The presenting GCS in the White/non-  
175 Hispanic group was 12.60 while that in the minority group was 11.95 ( $p < 0.001$ ). The ISS in the  
176 White/non-Hispanic group was 21.27 vs 22.44 in the minority group ( $p < 0.001$ ). The percentage  
177 of patients with AIS  $> 3$  and 4 was similar between groups, however the percentage of patients  
178 with AIS  $> 5$  was 18.5% in the White/non-Hispanic group vs 22.5% in the minority group. The  
179 percentage of TBI severity (mild, moderate, and severe) was statistically significant with 5.8%  
180 moderate and 16.4% severe TBI in the White/non-Hispanic group vs 7.2% moderate and 21.7%  
181 severe in the minority group ( $p < 0.001$ ).

### 182 3.4 Types of medical interventions

183 There was no statistically significant difference between groups regarding mode of transport to  
184 the hospital with each group arriving via ambulance around 77% of the time and a privately  
185 owned vehicle 1.3-1.4% of the time. Advanced directives were in place for 3.0% of White/non-  
186 Hispanic patients vs 2.0% of minority patients. There were 92.5% of patients in the White/non-  
187 Hispanic group with neither an Advanced Director nor POLST in place prior to injury vs 94.4%  
188 of patients in the minority group with neither document in place. In the White/non-Hispanic  
189 group, 30.8% of the patients were operative vs 34.5% of the patients in the minority group ( $p =$   
190 0.008).

### 191 3.5 Insurance and financial factors

192 The average total hospital charges for all patients was \$75,966.76 vs \$75,408.30 for White/non-  
193 Hispanic patients and \$77,766.92 for minority patients ( $p = 0.450$ ). For the White/non-Hispanic  
194 group, commercial insurance was the most common primary payor at 31.5% of patients while for  
195 the minority group, the most common primary payor was vehicle insurance at 26.2% of patients.  
196 The second most common primary payor for White/non-Hispanic patients was Medicare at

197 21.4% while the second most common for minority patients was commercial insurance at 20.2%.  
198 Workman's compensation paid as the primary payor for 2.9% of White/non-Hispanic patients vs  
199 4.3% of minority patients. White/non-Hispanic patients utilized self-pay methods 7.3% of the  
200 time vs 11.1% of the time for minority patients.

#### 201 **4 Discussion**

202 In this study, we explored the disparities between white/non-Hispanic and minority patients in  
203 mortality and adverse outcomes in traumatic brain injury patients presenting to a Level I trauma  
204 center in Portland, OR. Our results suggest that there are significant differences in mortality and  
205 adverse outcomes even given similar severity of injury, presenting factors, and financial factors.  
206 In our primary outcome, mortality, there was a large statistically significant difference between  
207 in-hospital death and hospital length of stay between groups. Accounting for potentially  
208 confounding factors such as severity of presenting injury, primary payor insurance mechanisms,  
209 hospital charges, and mechanism of injury, minority patients were at double the risk of in-  
210 hospital mortality than White/non-Hispanic patients. Regarding disparities in other aspects of  
211 care, there was no statistically significant difference in discharge disposition, though there was a  
212 trend towards higher rates of discharge to SNFs, Acute Care Facility-Hospitals, and  
213 Rehabilitation Facilities in the White/non-Hispanic group compared to the minority group.

214 This could potentially demonstrate differences in access to such facilities, differences in  
215 insurance or payment methods, or even access to social work facilitation of these types of  
216 discharges. Although there was no statistically significant difference in total hospital charges, our  
217 analyses did in fact show a trend regarding types of primary payors between the White/non-  
218 Hispanic patients and the minority patients in that the most common primary payor for  
219 White/non-Hispanic patients was commercial insurance vs vehicle insurance for minority  
220 patients. This correlates well to our finding that there was a higher percentage of MVC-related  
221 injury in the minority group compared to the White/non-Hispanic group and may also help to  
222 explain their greater severity of injury at presentation. However, the additional increase in  
223 percentage of both Workman's compensation as well as self-pay seen in the minority group  
224 raises the concern that through these payor routes, minority patients may not have had similar  
225 access to discharge options such as SNFs or rehab facilities as did patients in the White/non-  
226 Hispanic group.

227 There was a statistically significant difference in types of trauma between White/non-Hispanic  
228 patients and minority patients with minority patients presenting more often with penetrating  
229 trauma than their White/non-Hispanic counterparts. Minority patients also tended to have a  
230 higher rate of MVC as primary MOI and a higher rate of injury related to their work compared to  
231 the White/non-Hispanic patients. Minority patients tended to present with more severe injuries as  
232 demonstrated by both pure ISS as well as their tendency towards higher rates of more severe AIS  
233 at presentation. This may correlate to our findings that a higher number of minority patients were  
234 judged as operative patients compared to the White/non-Hispanic patients. Although all of these  
235 findings as secondary outcomes are disparities in and of themselves, they do not explain the

236 significant difference in our primary outcome of overall mortality between minority and  
237 White/non-Hispanic patients given that our primary analysis accounted for these severity factors.

238 It is well-studied in many other aspects of medicine and epidemiology that patients receive  
239 differing quality of healthcare and therefore have significantly different outcomes as a result of  
240 these health disparities. Not only do minority patients face persistent unconscious bias in the  
241 healthcare field and have differential access to baseline healthcare, it has also been shown that  
242 the healthcare that they do end up receiving likely is less adequate to handle surgically or  
243 medically complex issues due to shortages of necessary specialists, technology gaps, or timely  
244 access to services<sup>(24, 30)</sup>. Previous research in neurosurgery and other surgically complex fields  
245 have demonstrated marked disparities in the procedural outcomes between minority and  
246 White/non-Hispanic patients<sup>(13, 22, 23, 31)</sup>, however the current research regarding disparities in  
247 trauma management of minority patients still has yet to show the true inequality of care.

248 Among reasons that can be documented for these healthcare disparities in traumatic brain injury,  
249 one of the most likely explanations in our patient population was the sheer severity of injury at  
250 presentation and the likelihood of operation in our minority patients. This, alongside greater  
251 numbers of penetrative traumas and traumas related to MVC rather than fall, produced a much  
252 more severe clinical picture for our minority group than our White/non-Hispanic group. To  
253 explain these presenting findings, it is important to look at the history of trauma in regions and  
254 neighborhoods of predominantly minority persons. Through decades of housing red-lining, tax  
255 adjustments, and inequitable educational progress, neighborhoods primarily composed of  
256 minority persons in America have trended towards more dangerous, violent regions by no fault  
257 of the persons living in those regions<sup>(32-36)</sup>. It is logical to assume that areas of increased risk of  
258 violence would have higher rates of violent trauma than those with better protections in place.  
259 Additionally, persons of minority status often live further from healthcare facilities adequately  
260 equipped to manage the complexity of the trauma with which the patient presents. Many studies  
261 have recently shown the extent of the disparities in both number and quality of providers but also  
262 the number and quality of the technology available at local or regional hospitals compared to the  
263 wealthier and often more academic hospitals placed in centers of higher economic advantage<sup>(12,</sup>  
264 <sup>24, 30, 37)</sup>.

265 However, there are many factors that could potentially influence a patient's mortality or  
266 secondary outcomes following a traumatic brain injury. Among those, we were only able to  
267 analyze the data points associated with the seemingly extensive Trauma One database for one of  
268 the two level 1 trauma centers in the state of Oregon, yet even with these data, there are  
269 numerous sociological, epidemiological, financial, psychological, and political factors at play  
270 that go unreported and therefore are under-researched<sup>(21)</sup>. These factors typically thought of to be  
271 non-medical have consistently demonstrated pervasive, persistent, and poignant disparities  
272 between minority patients and White/non-Hispanic patients that have plagued our healthcare  
273 system in the United States<sup>(1, 3, 8, 10, 34, 38-40)</sup>. These health disparities have been demonstrated to be  
274 independent of individual health choices; these inequalities are not biologically determined yet  
275 they plague only certain sects of our populations, permeating beyond healthcare. Not only do our

276 minority patients have generations of well-documented medical trauma that prohibits a full  
277 trusting relationship of the American healthcare system but there are clearly also disparities in  
278 patient's lives pre-hospital such as access to routine healthcare, leniency in the workplace for  
279 regular healthcare maintenance, financial freedom for healthcare maintenance, safe working  
280 environments, housing opportunities in neighborhoods free of violence, full of healthy foods, and  
281 access to clear air/water, and many more that are simply not documented when our patients  
282 present with neuro-trauma<sup>(3, 8, 34, 38, 40)</sup>. The health equity framework with which we claim to  
283 utilize to progress our medical care demands that we recognize these extraneous but highly  
284 influential aspects of our patients' lives. We must make ourselves aware of the macro-social  
285 factors which perpetuate this disproportionate suffering among our patients of color and act with  
286 the responsibility and privilege we carry in our communities to make these disparities known.  
287 We must not only care for our patients when we encounter them within our clinics, emergency  
288 departments (EDs), and operating rooms, but in the healthcare disparities that exist outside of the  
289 concrete confines of the traditional healthcare system. Thus, we have a responsibility to engage  
290 with the upstream factors in our patients' lives that put them at increased risk even prior to  
291 entering our facility's doors. The traumas of structural racism do not start the moment of impact  
292 from a fall or an MVC; our patients' traumas begin when they are raised in a discriminatory  
293 society and robbed of certain medical, social, political, and financial privileges accustomed by  
294 our White/non-Hispanic patients.

295 Our study is but one current research set to analyze the disparities in yet another aspect of  
296 medical care in the United States and certainly not the only one to find inequalities in  
297 management of trauma. It is imperative that we as a medical community target not only  
298 healthcare improvements to properly regulate and treat neurosurgical trauma, but focus our  
299 progress towards equitable community environments, living situations, financial and insurance-  
300 based payment plans, and trauma prevention efforts in order to better care for our patients of  
301 color both pre-hospital and once they arrive into our ED. Now with an ever-growing  
302 accumulation of research shining light to these racial and ethnic disparities in every corner of  
303 medical research, it is simply insufficient to produce more research, but it is ever more pertinent  
304 to call all medical providers to greater action.

## 305 **5 Conclusion**

306 In this study, we explored the in-hospital mortality outcomes and characteristics of adult patients  
307 who were admitted with traumatic brain injury to one of the two Level I trauma centers in  
308 Portland, OR between 2006 to October of 2017. Our data demonstrate a significant disparity in  
309 overall in-hospital mortality in minority patients, greater severity of presenting injury, higher  
310 incidence of MVC- or work-related injury, and higher operative rate than White/non-Hispanic  
311 patients given insignificant differences in insurance, hospital charges, and other accounting  
312 factors. Although these are novel findings for the field of neurosurgical trauma related to  
313 traumatic brain injury, they are repeated in other specialties and other medically complex patient  
314 populations in the American healthcare system. Though research has been keen to identify these  
315 marked inequalities over the past couple of decades, there has not been a clear path to



316 dismantling these disparities within the medical community. The necessary first step in providing  
317 an equitable healthcare system for all patients regardless of socioeconomic, racial, or ethnic  
318 status, is continued awareness of the pervasiveness and consistency of these medical disparities  
319 and emphasized efforts to improve the sociological factors that perpetuate them.

## 320 **6 Resources**

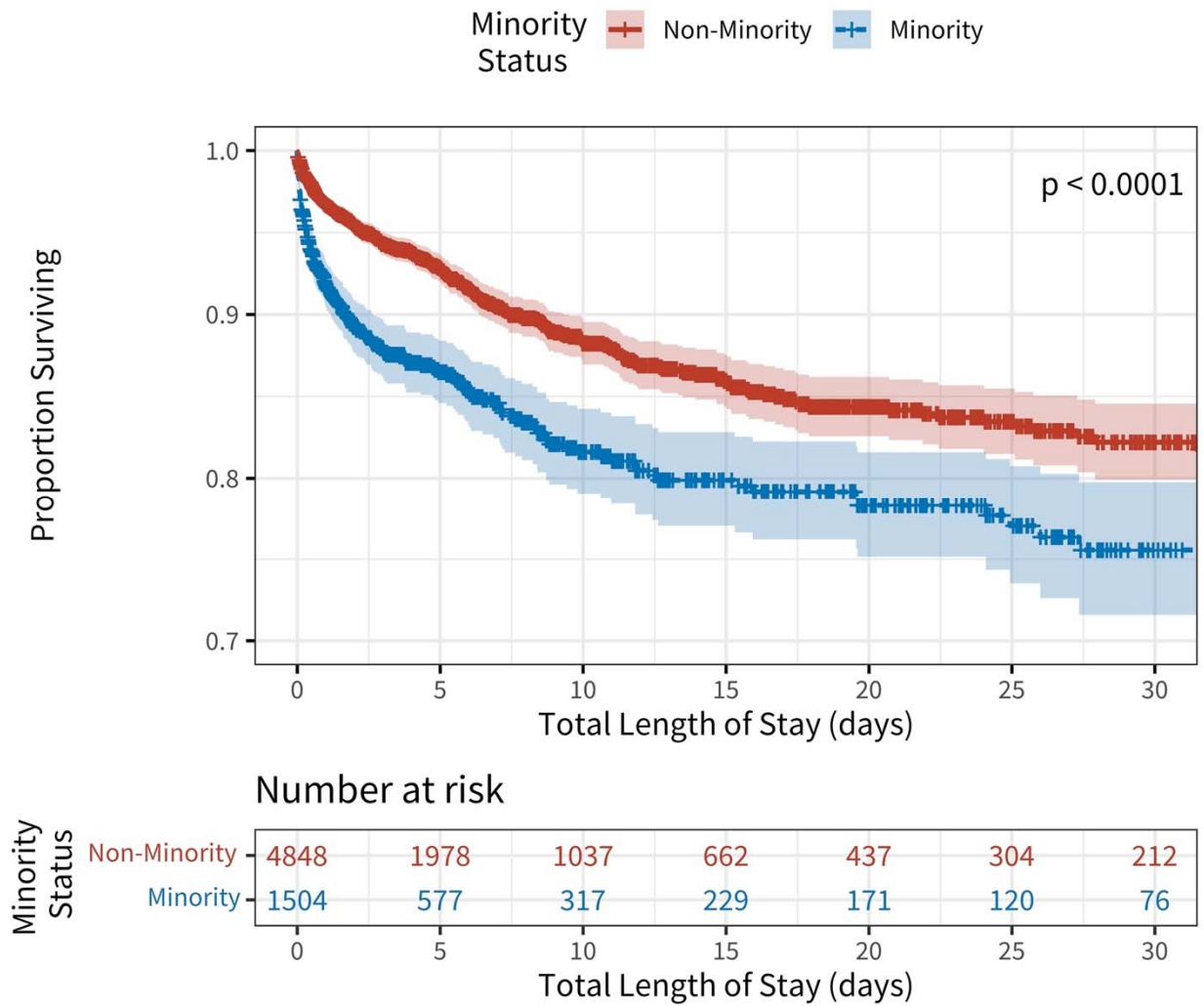
- 321 1. Institute of Medicine (US) Committee on Understanding and Eliminating Racial and  
322 Ethnic Disparities in Health Care. *Unequal Treatment: Confronting Racial and Ethnic*  
323 *Disparities in Health Care*. Washington (DC): National Academies Press (US) (2003).
- 324 2. Churchwell K, Elkind MSV, Benjamin RM, Carson AP, Chang EK, Lawrence W, et  
325 al. Call to Action: Structural Racism as a Fundamental Driver of Health Disparities: A  
326 Presidential Advisory From the American Heart Association. *Circulation* (2020) 142(24). doi:  
327 10.1161/cir.0000000000000936.
- 328 3. Gee GC, Ford CL. STRUCTURAL RACISM AND HEALTH INEQUITIES. *Du Bois*  
329 *Review: Social Science Research on Race* (2011) 8(1):115-32. doi:  
330 10.1017/s1742058x11000130.
- 331 4. Kuzawa CW, Sweet E. Epigenetics and the embodiment of race: Developmental  
332 origins of US racial disparities in cardiovascular health. *American Journal of Human Biology*  
333 (2009) 21(1):2-15. doi: 10.1002/ajhb.20822.
- 334 5. Phelan JC, Link BG, Feldman NM. The Genomic Revolution and Beliefs about  
335 Essential Racial Differences. *American Sociological Review* (2013) 78(2):167-91. doi:  
336 10.1177/0003122413476034.
- 337 6. Meloni M. Scientific racism. *The Wiley-Blackwell Encyclopedia of Social Theory*  
338 (2017):1-3.
- 339 7. Geneviève LD, Martani A, Shaw D, Elger BS, Wangmo T. Structural racism in  
340 precision medicine: leaving no one behind. *BMC Medical Ethics* (2020) 21(1). doi:  
341 10.1186/s12910-020-0457-8.
- 342 8. Smedley A, Smedley BD. Race as biology is fiction, racism as a social problem is real:  
343 Anthropological and historical perspectives on the social construction of race. *American*  
344 *psychologist* (2005) 60(1):16.
- 345 9. Nazroo JY, Bhui KS, Rhodes J. Where next for understanding race/ethnic inequalities  
346 in severe mental illness? Structural, interpersonal and institutional racism. *Sociology of Health &*  
347 *Illness* (2020) 42(2):262-76. doi: 10.1111/1467-9566.13001.
- 348 10. Gao S, Kumar RG, Wisniewski SR, Fabio A. Disparities in Health Care Utilization of  
349 Adults With Traumatic Brain Injuries Are Related to Insurance, Race, and Ethnicity: A  
350 Systematic Review. *Journal of Head Trauma Rehabilitation* (2018) 33(3):E40-E50. doi:  
351 10.1097/htr.0000000000000338.
- 352 11. Haider AH, Weygandt PL, Bentley JM, Monn MF, Rehman KA, Zarzaur BL, et al.  
353 Disparities in trauma care and outcomes in the United States. *Journal of Trauma and Acute Care*  
354 *Surgery* (2013) 74(5):1195-205. doi: 10.1097/ta.0b013e31828c331d.
- 355 12. Udyavar R, Perez S, Haider A. Equal Access Is Quality: an Update on the State of  
356 Disparities Research in Trauma. *Current Trauma Reports* (2018) 4(1):25-38. doi:  
357 10.1007/s40719-018-0114-6.
- 358 13. Collaborative G. Mortality of emergency abdominal surgery in high-, middle- and  
359 low-income countries. *British Journal of Surgery* (2016) 103(8):971-88. doi: 10.1002/bjs.10151.

- 360 14. Montgomery JR, Cain-Nielsen AH, Jenkins PC, Regenbogen SE, Hemmila MR.  
361 Prevalence and Payments for Traumatic Injury Compared With Common Acute Diseases by  
362 Episode of Care in Medicare Beneficiaries, 2008-2014. *JAMA* (2019) 321(21):2129. doi:  
363 10.1001/jama.2019.1146.
- 364 15. Madsen T, Erlangsen A, Orlovskaya S, Mofaddy R, Nordentoft M, Benros ME.  
365 Association Between Traumatic Brain Injury and Risk of Suicide. *JAMA* (2018) 320(6):580. doi:  
366 10.1001/jama.2018.10211.
- 367 16. Crane PK, Gibbons LE, Dams-O'Connor K, Trittschuh E, Leverenz JB, Keene CD, et  
368 al. Association of Traumatic Brain Injury With Late-Life Neurodegenerative Conditions and  
369 Neuropathologic Findings. *JAMA Neurology* (2016) 73(9):1062. doi:  
370 10.1001/jamaneurol.2016.1948.
- 371 17. Hyder AA, Wunderlich CA, Puvanachandra P, Gururaj G, Kobusingye OC. The  
372 impact of traumatic brain injuries: A global perspective. *NeuroRehabilitation* (2007) 22(5):341-  
373 53. doi: 10.3233/nre-2007-22502.
- 374 18. James SL, Theadom A, Ellenbogen RG, Bannick MS, Montjoy-Venning W, Lucchesi  
375 LR, et al. Global, regional, and national burden of traumatic brain injury and spinal cord injury,  
376 1990–2016: a systematic analysis for the Global Burden of Disease Study 2016. *The Lancet*  
377 *Neurology* (2019) 18(1):56-87. doi: 10.1016/s1474-4422(18)30415-0.
- 378 19. Branch CL, Boop F, Haglund MM, Dempsey RJ. Introduction. Neurosurgical  
379 opportunities in global health inequities. *Neurosurgical Focus* (2018) 45(4):E1. doi:  
380 10.3171/2018.7.focus18367.
- 381 20. Johnson WD, Griswold DP. Traumatic brain injury: a global challenge. *The Lancet*  
382 *Neurology* (2017) 16(12):949-50. doi: 10.1016/s1474-4422(17)30362-9.
- 383 21. Brenner EK, Grossner EC, Johnson BN, Bernier RA, Soto J, Hillary FG. Race and  
384 ethnicity considerations in traumatic brain injury research: Incidence, reporting, and outcome.  
385 *Brain Injury* (2020) 34(6):801-10. doi: 10.1080/02699052.2020.1741033.
- 386 22. Chiu RG, Murphy BE, Zhu A, Mehta AI. Racial and Ethnic Disparities in the  
387 Inpatient Management of Primary Spinal Cord Tumors. *World Neurosurg* (2020) (140):e175-  
388 e84. Epub 2020 May 7. doi: 10.1016/j.wneu.2020.04.231.
- 389 23. Curry WT, Carter BS, Barker FG. Racial, Ethnic, and Socioeconomic Disparities in  
390 Patient Outcomes After Craniotomy for Tumor in Adult Patients in the United States, 1988–  
391 2004. *Neurosurgery* (2010) 66(3):427-38. doi: 10.1227/01.neu.0000365265.10141.8e.
- 392 24. Homo RL, Grigorian A, Chen J, Figueroa C, Chin T, Kuza CM, et al. Regional,  
393 Racial, and Mortality Disparities Associated With Neurosurgeon Staffing at Level I Trauma  
394 Centers. *The American Surgeon* (2020):000313482098318. doi: 10.1177/0003134820983187.
- 395 25. Von Elm E, Altman DG, Egger M, Pocock SJ, Gøtzsche PC, Vandenbroucke JP. The  
396 Strengthening of Reporting of Observational Studies in Epidemiology (STROBE) statement:  
397 guidelines for reporting observational studies. *The Lancet* (2007) 370(9596):1453-7. doi:  
398 10.1016/s0140-6736(07)61602-x.
- 399 26. Clark DE, Black AW, Skavdahl DH, Hallagan LD. Open-access programs for injury  
400 categorization using ICD-9 or ICD-10. *Injury Epidemiology* (2018) 5(1). doi: 10.1186/s40621-  
401 018-0149-8.
- 402 27. Rosenbaum PR, Rubin DB. The central role of the propensity score in observational  
403 studies for causal effects. *Biometrika* (1983) 70(1):41-55. doi: 10.1093/biomet/70.1.41.
- 404 28. Vanderweele TJ. Principles of confounder selection. *European Journal of*  
405 *Epidemiology* (2019) 34(3):211-9. doi: 10.1007/s10654-019-00494-6.

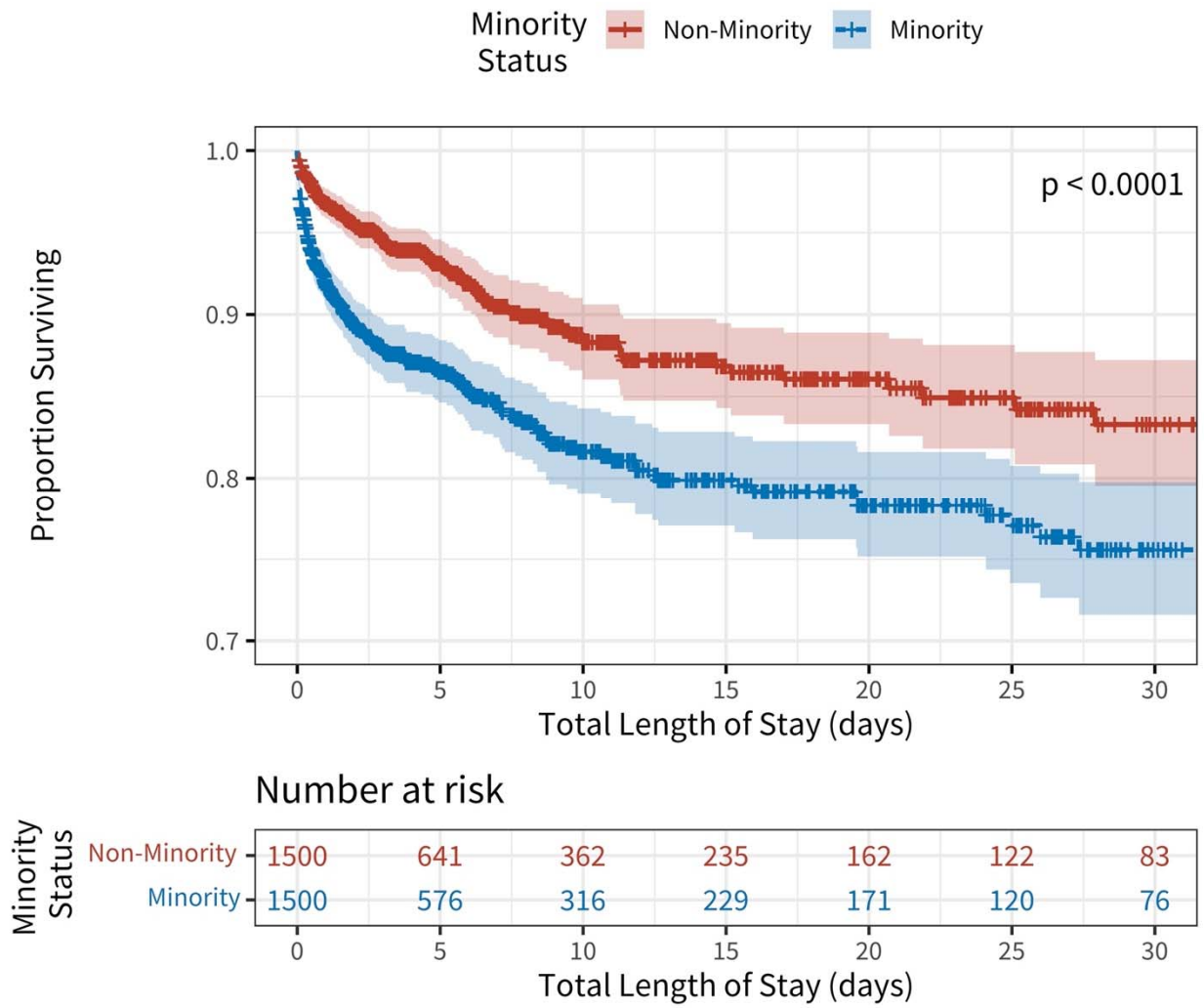
- 406 29. Ho DE, Imai K, King G, Stuart EA. MatchIt: Nonparametric Preprocessing for  
407 Parametric Causal Inference. *Journal of Statistical Software* (2011) 42(8). doi:  
408 10.18637/jss.v042.i08.
- 409 30. Zhu TH, Hollister L, Opoku D, Galvagno SM. Improved Survival for Rural Trauma  
410 Patients Transported by Helicopter to a Verified Trauma Center: A Propensity Score Analysis.  
411 *Academic Emergency Medicine* (2018) 25(1):44-53. doi: 10.1111/acem.13307.
- 412 31. Lucas FL, Stukel TA, Morris AM, Siewers AE, Birkmeyer JD. Race and surgical  
413 mortality in the United States. *Ann Surg* (2006) 243(2):281-6. doi:  
414 10.1097/01.sla.0000197560.92456.32. PubMed PMID: 16432363.
- 415 32. Martin MJ, Mccarthy B, Conger RD, Gibbons FX, Simons RL, Cutrona CE, et al.  
416 The Enduring Significance of Racism: Discrimination and Delinquency Among Black American  
417 Youth. *Journal of Research on Adolescence* (2011) 21(3):662-76. doi: 10.1111/j.1532-  
418 7795.2010.00699.x.
- 419 33. Lane SD, Rubinstein RA, Bergen-Cico D, Jennings-Bey T, Fish LS, Larsen DA, et al.  
420 Neighborhood Trauma Due to Violence: A Multilevel Analysis. *Journal of Health Care for the*  
421 *Poor and Underserved* (2017) 28(1):446-62. doi: 10.1353/hpu.2017.0033.
- 422 34. Williams DR, Mohammed SA. Racism and Health I. *American Behavioral Scientist*  
423 (2013) 57(8):1152-73. doi: 10.1177/0002764213487340.
- 424 35. Mesic A, Franklin L, Cansever A, Potter F, Sharma A, Knopov A, et al. The  
425 Relationship Between Structural Racism and Black-White Disparities in Fatal Police Shootings  
426 at the State Level. *Journal of the National Medical Association* (2018) 110(2):106-16. doi:  
427 10.1016/j.jnma.2017.12.002.
- 428 36. Krivo J, Lauren, Peterson D, Ruth, Kuhl C, Danielle. Segregation, Racial Structure,  
429 and Neighborhood Violent Crime. *American Journal of Sociology* (2009) 114(6):1765-802. doi:  
430 10.1086/597285.
- 431 37. Haider AH, Hashmi ZG, Zafar SN, Hui X, Schneider EB, Efron DT, et al. Minority  
432 Trauma Patients Tend to Cluster at Trauma Centers with Worse-Than-Expected Mortality. *Ann*  
433 *Surg* (2013) 258(4):572-81. doi: 10.1097/sla.0b013e3182a50148.
- 434 38. Bailey ZD, Feldman JM, Bassett MT. How Structural Racism Works — Racist  
435 Policies as a Root Cause of U.S. Racial Health Inequities. *New England Journal of Medicine*  
436 (2021) 384(8):768-73. doi: 10.1056/nejmms2025396.
- 437 39. Egede LE. Race, ethnicity, culture, and disparities in health care. *Journal of General*  
438 *Internal Medicine* (2006) 21(6):667-9. doi: 10.1111/j.1525-1497.2006.0512.x.
- 439 40. Paradies Y, Ben J, Denson N, Elias A, Priest N, Pieterse A, et al. Racism as a  
440 Determinant of Health: A Systematic Review and Meta-Analysis. *PLOS ONE* (2015)  
441 10(9):e0138511. doi: 10.1371/journal.pone.0138511.

## 442 7 Conflict of Interest

443 *The authors declare that the research was conducted in the absence of any commercial or*  
444 *financial relationships that could be construed as a potential conflict of interest.*



**Figure 1A.** Unadjusted Kaplan-Meier survival curves stratified by minority status.



**Figure 1B.** Propensity-Score Weighted Kaplan-Meier survival curves stratified by minority status.

**Table 1A.** Baseline patient characteristics stratified by minority status.

		<b>Total</b>	<b>Non-Minority</b>	<b>Minority</b>	<b>p-value</b>	<b>Absolute Standardized Difference</b>
<b>n</b>		6,352	4,848	1,504		
<b>Age (years)</b>		53.25 (22.36)	54.90 (22.19)	47.91 (22.10)	<0.001	0.316
<b>Categorical Age</b>	<u>15-24</u>	908 (14.3)	613 (12.6)	295 (19.6)	NA	0.341
	<u>25-34</u>	813 (12.8)	567 (11.7)	246 (16.4)		
	<u>35-44</u>	700 (11.0)	491 (10.1)	209 (13.9)		
	<u>45-54</u>	868 (13.7)	672 (13.9)	196 (13.0)		
	<u>55-64</u>	946 (14.9)	766 (15.8)	180 (12.0)		
	<u>65-74</u>	792 (12.5)	656 (13.5)	136 (9.0)		
	<u>75-84</u>	743 (11.7)	589 (12.1)	154 (10.2)		
	<u>85+</u>	582 (9.2)	494 (10.2)	88 (5.9)		
<b>Sex</b>	<u>Male</u>	4353 (68.5)	3264 (67.3)	1089 (72.4)	<0.001	0.111
	<u>Female</u>	1999 (31.5)	1584 (32.7)	415 (27.6)		
<b>Race</b>	<u>White</u>	4866 (86.9)	4848 (100.0)	18 (2.4)	NA	9.012
	<u>Black or African American</u>	100 (1.8)	0 (0.0)	100 (13.4)		
	<u>American Indian or Alaskan Native</u>	59 (1.1)	0 (0.0)	59 (7.9)		
	<u>Asian</u>	142 (2.5)	0 (0.0)	142 (19.0)		
	<u>Hispanic or Latino</u>	346 (6.2)	0 (0.0)	346 (46.2)		
	<u>Pacific Islander or Native Hawaiian</u>	15 (0.3)	0 (0.0)	15 (2.0)		

**Table 1A.** Baseline patient characteristics stratified by minority status.

		<b>Total</b>	<b>Non-Minority</b>	<b>Minority</b>	<b>p-value</b>	<b>Absolute Standardized Difference</b>
	<u>Other</u>	69 (1.2)	0 (0.0)	69 (9.2)		
<b>Ethnicity</b>	<u>Not Hispanic or Latino</u>	5976 (94.1)	4848 (100.0)	773 (51.4)	<0.001	1.375
	<u>Hispanic or Latino</u>	375 (5.9)	0 (0.0)	731 (48.6)		
<b>BMI</b>		27.25 (6.02)	27.35 (6.06)	26.90 (5.84)	0.116	0.076
<b>Injury Type</b>	<u>Blunt</u>	6130 (96.5)	4706 (97.1)	1424 (94.7)	<0.001	0.122
	<u>Penetrating</u>	221 (3.5)	141 (2.9)	80 (5.3)		
<b>Mechanism of Injury</b>	<u>Fall</u>	3006 (47.5)	2416 (50.0)	590 (39.3)	NA	0.322
	<u>Firearm</u>	146 (2.3)	94 (1.9)	52 (3.5)		
	<u>Motor vehicle traffic - Motorcyclist</u>	272 (4.3)	227 (4.7)	45 (3.0)		
	<u>Motor vehicle traffic - Occupant</u>	1079 (17.0)	765 (15.8)	314 (20.9)		
	<u>Motor vehicle traffic - Pedestrian</u>	397 (6.3)	272 (5.6)	125 (8.3)		
	<u>Pedal cyclist, other</u>	287 (4.5)	240 (5.0)	47 (3.1)		
	<u>Struck by, against</u>	511 (8.1)	345 (7.1)	166 (11.1)		
	<u>Transport, other</u>	248 (3.9)	201 (4.2)	47 (3.1)		
	<u>Other</u>	386 (6.1)	270 (5.6)	116 (7.7)		
<b>Work Relatedness of Injury</b>	<u>Work Related</u>	226 (3.6)	156 (3.2)	70 (4.7)	0.011	0.074

**Table 1A.** Baseline patient characteristics stratified by minority status.

		<b>Total</b>	<b>Non-Minority</b>	<b>Minority</b>	<b>p-value</b>	<b>Absolute Standardized Difference</b>
	<u>Not Work Related</u>	6125 (96.4)	4691 (96.8)	1434 (95.3)		
<b>GCS on ED Presentation</b>		12.45 (4.28)	12.60 (4.17)	11.95 (4.58)	<0.001	0.149
<b>ISS</b>		21.55 (10.47)	21.27 (10.26)	22.44 (11.06)	<0.001	0.110
<b>AIS H&amp;N</b>	<u>3</u>	2721 (42.8)	2102 (43.4)	619 (41.2)	0.001	0.112
	<u>4</u>	2374 (37.4)	1836 (37.9)	538 (35.8)		
	<u>5</u>	1238 (19.5)	899 (18.5)	339 (22.5)		
	<u>6</u>	19 (0.3)	11 (0.2)	8 (0.5)		
<b>TBI Severity</b>	<u>Mild</u>	4010 (76.2)	3139 (77.8)	871 (71.1)	<0.001	0.155
	<u>Moderate</u>	323 (6.1)	235 (5.8)	88 (7.2)		
	<u>Severe</u>	927 (17.6)	661 (16.4)	266 (21.7)		
<b>Transport Mode</b>	<u>Ambulance</u>	4880 (77.0)	3713 (76.9)	1167 (77.6)	0.516	0.081
	<u>Privately Owned Vehicle</u>	88 (1.4)	68 (1.4)	20 (1.3)		
	<u>Walk In</u>	7 (0.1)	7 (0.1)	0 (0.0)		
	<u>Helicopter</u>	891 (14.1)	684 (14.2)	207 (13.8)		
	<u>Police or Law Enforcement</u>	1 (0.0)	1 (0.0)	0 (0.0)		
	<u>Auto Launch Helicopter</u>	0 (0.0)	0 (0.0)	0 (0.0)		
	<u>Other</u>	40 (0.6)	35 (0.7)	5 (0.3)		
	<u>Fixed Wing Aircraft</u>	427 (6.7)	323 (6.7)	104 (6.9)		
<b>Advanced Directives</b>	<u>Advance Directive,</u>	174 (2.8)	145 (3.0)	29 (2.0)	0.081	0.080



**Table 1A.** Baseline patient characteristics stratified by minority status.

	<b>Total</b>	<b>Non-Minority</b>	<b>Minority</b>	<b>p-value</b>	<b>Absolute Standardized Difference</b>
<u>Directive to physicians, or Living Will</u>					
<u>Both Advance Directive AND POLST prior to injury</u>	41 (0.7)	32 (0.7)	9 (0.6)		
<u>No, neither Advance Directive nor POLST prior to injury</u>	5863 (93.0)	4470 (92.5)	1393 (94.4)		
<u>POLST in effect prior to injury</u>	229 (3.6)	184 (3.8)	45 (3.0)		
<b>Operative Status</b>				0.008	0.079
<u>Operative Patient</u>	2012 (31.7)	1493 (30.8)	519 (34.5)		
<u>Non-Operative Patient</u>	4337 (68.3)	3352 (69.2)	985 (65.5)		
<b>Length of Hospital Stay (days)</b>	7.70 (11.00)	7.64 (10.65)	7.89 (12.08)	0.435	0.022
<b>Length of ICU Stay (days)</b>	3.88 (5.61)	3.88 (5.67)	3.88 (5.42)	0.966	0.001
<b>Total Hospital Charges</b>	75,966.76 (105,810.70)	75,408.30 (107,687.29)	77,766.92 (99,534.22)	0.450	0.023
<b>Primary Payor</b>				NA	0.341
<u>Vehicle Insurance</u>	1382 (21.8)	988 (20.4)	394 (26.2)		
<u>Charity</u>	1 (0.0)	0 (0.0)	1 (0.1)		
<u>Commercial</u>	1832 (28.8)	1529 (31.5)	303 (20.2)		

**Table 1A.** Baseline patient characteristics stratified by minority status.

		<b>Total</b>	<b>Non-Minority</b>	<b>Minority</b>	<b>p-value</b>	<b>Absolute Standardized Difference</b>
	<u>Insurance</u>					
	<u>Medicaid</u>	798 (12.6)	559 (11.5)	239 (15.9)		
	<u>Medicare</u>	1290 (20.3)	1038 (21.4)	252 (16.8)		
	<u>Other Health Insurance (VA)</u>	290 (4.6)	216 (4.5)	74 (4.9)		
	<u>Self Pay</u>	521 (8.2)	354 (7.3)	167 (11.1)		
	<u>Ward of Federal Government</u>	29 (0.5)	21 (0.4)	8 (0.5)		
	<u>Workman's Compensation</u>	208 (3.3)	143 (2.9)	65 (4.3)		
<b>Secondary Payor</b>	<u>Vehicle Insurance</u>	412 (14.4)	299 (13.7)	113 (16.4)	NA	0.225
	<u>Charity</u>	0 (0.0)	0 (0.0)	0 (0.0)		
	<u>Commercial Insurance</u>	1417 (49.4)	1119 (51.3)	298 (43.3)		
	<u>Medicaid</u>	642 (22.4)	467 (21.4)	175 (25.4)		
	<u>Medicare</u>	195 (6.8)	160 (7.3)	35 (5.1)		
	<u>Other Health Insurance (VA)</u>	198 (6.9)	133 (6.1)	65 (9.4)		
	<u>Self Pay</u>	2 (0.1)	1 (0.0)	1 (0.1)		
	<u>Ward of Federal Government</u>	3 (0.1)	2 (0.1)	1 (0.1)		
	<u>Workman's Compensation</u>	1 (0.0)	1 (0.0)	0 (0.0)		
<b>Discharge Disposition</b>	<u>Home</u>	3737 (58.8)	2834 (58.5)	903 (60.0)	NA	0.256

**Table 1A.** Baseline patient characteristics stratified by minority status.

	<b>Total</b>	<b>Non-Minority</b>	<b>Minority</b>	<b>p-value</b>	<b>Absolute Standardized Difference</b>
<u>Expired</u>	630 (9.9)	411 (8.5)	219 (14.6)		
<u>Skilled Nursing Facility</u>	1050 (16.5)	866 (17.9)	184 (12.2)		
<u>Acute Care Facility-Hospital</u>	91 (1.4)	79 (1.6)	12 (0.8)		
<u>Rehabilitation facility</u>	321 (5.1)	251 (5.2)	70 (4.7)		
<u>Home Health</u>	179 (2.8)	139 (2.9)	40 (2.7)		
<u>Hospice</u>	42 (0.7)	36 (0.7)	6 (0.4)		
<u>Court/law enforcement</u>	8 (0.1)	5 (0.1)	3 (0.2)		
<u>Against Medical Advice</u>	71 (1.1)	55 (1.1)	16 (1.1)		
<u>Psychiatric hospital or unit</u>	7 (0.1)	6 (0.1)	1 (0.1)		
<u>Long Term Acute Care</u>	44 (0.7)	34 (0.7)	10 (0.7)		
<u>Institution not defined elsewhere</u>	162 (2.6)	126 (2.6)	36 (2.4)		
<u>Intermediate Care Facility</u>	10 (0.2)	6 (0.1)	4 (0.3)		
<u>Other</u>	0 (0.0)	0 (0.0)	0 (0.0)		
<b>Probability of Survival</b>	0.92 (0.12)	0.92 (0.12)	0.92 (0.14)	0.203	0.043
<b>Deaths</b>					
<u>Live</u>	5722 (90.1)	4437 (91.5)	1285 (85.4)	<0.001	0.191
<u>Die</u>	630 (9.9)	411 (8.5)	219 (14.6)		

BMI = Body Mass Index

GCS = Glasgow Coma Scale

ISS = Injury Severity Score

AIS H&N = Abbreviated Injury Score of the Head & Neck

TBI = Traumatic Brain Injury

POLST = Physicians Orders For Life-Sustaining Treatment

ICU = Intensive Care Unit

VA = Veterans Affairs

**Table 1B.** Patient characteristics stratified by minority status following propensity matching.

	<b>Total</b>	<b>Non-Minority</b>	<b>Minority</b>	<b>pp-value</b>	<b>Absolute Standardized Difference</b>	
<b>n</b>		3,000	1,500	1,500		
<b>Age (years)</b>		48.41 (22.12)	48.87 (22.13)	47.96 (22.10)	0.259	0.041
<b>Categorical Age</b>	<u>15-24</u>	568 (18.9)	275 (18.3)	293 (19.5)	NA	0.120
	<u>25-34</u>	494 (16.5)	249 (16.6)	245 (16.3)		
	<u>35-44</u>	383 (12.8)	174 (11.6)	209 (13.9)		
	<u>45-54</u>	396 (13.2)	201 (13.4)	195 (13.0)		
	<u>55-64</u>	390 (13.0)	210 (14.0)	180 (12.0)		
	<u>65-74</u>	293 (9.8)	157 (10.5)	136 (9.1)		
	<u>75-84</u>	285 (9.5)	131 (8.7)	154 (10.3)		
	<u>85+</u>	191 (6.4)	103 (6.9)	88 (5.9)		
<b>Sex</b>	<u>Male</u>	2172 (72.4)	1087 (72.5)	1085 (72.3)	0.967	0.003
	<u>Female</u>	828 (27.6)	413 (27.5)	415 (27.7)		
<b>Race</b>	<u>White</u>	1518 (67.6)	1500 (100.0)	18 (2.4)	NA	9.000
	<u>Black or African American</u>	99 (4.4)	0 (0.0)	99 (13.3)		
	<u>American Indian or Alaskan Native</u>	59 (2.6)	0 (0.0)	59 (7.9)		
	<u>Asian</u>	142 (6.3)	0 (0.0)	142 (19.0)		
	<u>Hispanic or Latino</u>	346 (15.4)	0 (0.0)	346 (46.3)		
	<u>Pacific Islander or Native Hawaiian</u>	15 (0.7)	0 (0.0)	15 (2.0)		

	<u>Other</u>	68 (3.0)	0 (0.0)	68 (9.1)		
<b>Ethnicity</b>	<u>Not Hispanic or Latino</u>	2624 (87.5)	1500 (100.0)	771 (51.4)	<0.001	1.375
	<u>Hispanic or Latino</u>	375 (12.5)	0 (0.0)	729 (48.6)		
<b>BMI</b>		27.18 (5.91)	27.47 (5.96)	26.91 (5.85)	0.123	0.095
<b>Injury Type</b>	<u>Blunt</u>	2853 (95.1)	1432 (95.5)	1421 (94.7)	0.398	0.034
	<u>Penetrating</u>	147 (4.9)	68 (4.5)	79 (5.3)		
<b>Mechanism of Injury</b>	<u>Fall</u>	1198 (39.9)	608 (40.5)	590 (39.3)	NA	0.051
	<u>Firearm</u>	104 (3.5)	52 (3.5)	52 (3.5)		
	<u>Motor vehicle traffic - Motorcycle</u>	87 (2.9)	42 (2.8)	45 (3.0)		
	<u>Motor vehicle traffic - Occupant</u>	616 (20.5)	303 (20.2)	313 (20.9)		
	<u>Motor vehicle traffic - Pedestrian</u>	253 (8.4)	128 (8.5)	125 (8.3)		
	<u>Pedal cyclist, other</u>	91 (3.0)	44 (2.9)	47 (3.1)		
	<u>Struck by, against</u>	341 (11.4)	175 (11.7)	166 (11.1)		
	<u>Transport, other</u>	85 (2.8)	38 (2.5)	47 (3.1)		
	<u>Other</u>	225 (7.5)	110 (7.3)	115 (7.7)		
<b>Work Relatedness of Injury</b>	<u>Work Related</u>	129 (4.3)	59 (3.9)	70 (4.7)	0.368	0.036
	<u>Not Work Related</u>	2870 (95.7)	1440 (96.1)	1430 (95.3)		
<b>GCS on ED Presentation</b>		12.09 (4.52)	12.24 (4.45)	11.94 (4.59)	0.099	0.067

<b>ISS</b>		22.14 (10.93)	21.83 (10.79)	22.45 (11.06)	0.121	0.057
<b>AIS H&amp;N</b>	<u>3</u>	1239 (41.3)	623 (41.5)	616 (41.1)	0.220	0.077
	<u>4</u>	1104 (36.8)	566 (37.7)	538 (35.9)		
	<u>5</u>	646 (21.5)	308 (20.5)	338 (22.5)		
	<u>6</u>	11 (0.4)	3 (0.2)	8 (0.5)		
<b>TBI Severity</b>	<u>Mild</u>	1780 (72.6)	912 (74.1)	868 (71.0)	0.219	0.070
	<u>Moderate</u>	169 (6.9)	81 (6.6)	88 (7.2)		
	<u>Severe</u>	503 (20.5)	237 (19.3)	266 (21.8)		
<b>Transport Mode</b>	<u>Ambulance</u>	2312 (77.2)	1147 (76.7)	1165 (77.7)	0.796	0.073
	<u>Privately Owned Vehicle</u>	37 (1.2)	17 (1.1)	20 (1.3)		
	<u>Walk In</u>	2 (0.1)	2 (0.1)	0 (0.0)		
	<u>Helicopter</u>	419 (14.0)	213 (14.2)	206 (13.7)		
	<u>Police or Law Enforcement</u>	1 (0.0)	1 (0.1)	0 (0.0)		
	<u>Auto Launch Helicopter</u>	0 (0.0)	0 (0.0)	0 (0.0)		
	<u>Other</u>	12 (0.4)	7 (0.5)	5 (0.3)		
	<u>Fixed Wing Aircraft</u>	211 (7.0)	108 (7.2)	103 (6.9)		
<b>Advanced Directives</b>	<u>Advance Directive, Directive to physicians, or Living Will</u>	62 (2.1)	33 (2.2)	29 (2.0)	0.492	0.058
	<u>Both Advance Directive AND POLST prior to injury</u>	13 (0.4)	4 (0.3)	9 (0.6)		
	<u>No, neither Advance Directive nor</u>	2805 (94.6)	1416 (94.8)	1389 (94.4)		

	<u>POLST prior to injury</u>					
	<u>POLST in effect prior to injury</u>	86 (2.9)	41 (2.7)	45 (3.1)		
<b>Operative Status</b>	<u>Operative Patient</u>	1039 (34.6)	522 (34.8)	517 (34.5)	0.848	0.007
	<u>Non-Operative Patient</u>	1960 (65.4)	977 (65.2)	983 (65.5)		
<b>Length of Hospital Stay (days)</b>		8.13 (11.79)	8.35 (11.49)	7.90 (12.09)	0.302	0.038
<b>Length of ICU Stay (days)</b>		4.08 (5.71)	4.29 (5.98)	3.88 (5.42)	0.065	0.072
<b>Total Hospital Charges</b>		79,507.40 (102,980.49)	81,158.88 (106,227.79)	77,855.92 (99,635.52)	0.380	0.032
<b>Primary Payor</b>	<u>Vehicle Insurance</u>	792 (26.4)	398 (26.5)	394 (26.3)	NA	0.090
	<u>Charity</u>	0 (0.0)	0 (0.0)	0 (0.0)		
	<u>Commercial Insurance</u>	589 (19.6)	287 (19.1)	302 (20.1)		
	<u>Medicaid</u>	489 (16.3)	251 (16.7)	238 (15.9)		
	<u>Medicare</u>	530 (17.7)	278 (18.5)	252 (16.8)		
	<u>Other Health Insurance (VA)</u>	127 (4.2)	53 (3.5)	74 (4.9)		
	<u>Self Pay</u>	334 (11.1)	167 (11.1)	167 (11.1)		
	<u>Ward of Federal Government</u>	17 (0.6)	9 (0.6)	8 (0.5)		
	<u>Workman's Compensation</u>	122 (4.1)	57 (3.8)	65 (4.3)		
<b>Secondary Payor</b>	<u>Vehicle Insurance</u>	230 (16.3)	117 (16.1)	113 (16.4)	NA	0.118



	<u>Charity</u>	0 (0.0)	0 (0.0)	0 (0.0)		
	<u>Commercial Insurance</u>	647 (45.7)	349 (48.0)	298 (43.3)		
	<u>Medicaid</u>	340 (24.0)	165 (22.7)	175 (25.4)		
	<u>Medicare</u>	74 (5.2)	39 (5.4)	35 (5.1)		
	<u>Other Health Insurance (VA)</u>	119 (8.4)	54 (7.4)	65 (9.4)		
	<u>Self Pay</u>	2 (0.1)	1 (0.1)	1 (0.1)		
	<u>Ward of Federal Government</u>	3 (0.2)	2 (0.3)	1 (0.1)		
	<u>Workman's Compensation</u>	0 (0.0)	0 (0.0)	0 (0.0)		
<b>Discharge Disposition</b>	<u>Home</u>	1793 (59.8)	893 (59.5)	900 (60.0)	NA	0.235
	<u>Expired</u>	346 (11.5)	128 (8.5)	218 (14.5)		
	<u>Skilled Nursing Facility</u>	402 (13.4)	218 (14.5)	184 (12.3)		
	<u>Acute Care Facility-Hospital</u>	33 (1.1)	21 (1.4)	12 (0.8)		
	<u>Rehabilitation facility</u>	165 (5.5)	95 (6.3)	70 (4.7)		
	<u>Home Health</u>	82 (2.7)	42 (2.8)	40 (2.7)		
	<u>Hospice</u>	15 (0.5)	9 (0.6)	6 (0.4)		
	<u>Court/law enforcement</u>	6 (0.2)	3 (0.2)	3 (0.2)		
	<u>Against Medical Advice</u>	38 (1.3)	22 (1.5)	16 (1.1)		
	<u>Psychiatric hospital or unit</u>	5 (0.2)	4 (0.3)	1 (0.1)		

	<u>Long Term Acute Care</u>	23 (0.8)	13 (0.9)	10 (0.7)		
	<u>Institution not defined elsewhere</u>	87 (2.9)	51 (3.4)	36 (2.4)		
	<u>Intermediate Care Facility</u>	5 (0.2)	1 (0.1)	4 (0.3)		
	<u>Other</u>	0 (0.0)	0 (0.0)	0 (0.0)		
<b>Probability of Survival</b>		0.92 (0.13)	0.93 (0.12)	0.92 (0.14)	0.040	0.092
<b>Deaths</b>	<u>Live</u>	2654 (88.5)	1372 (91.5)	1282 (85.5)	<0.001	0.189
	<u>Die</u>	346 (11.5)	128 (8.5)	218 (14.5)		

BMI = Body Mass Index

GCS = Glasgow Coma Scale

ISS = Injury Severity Score

AIS H&N = Abbreviated Injury Score of the Head & Neck

TBI = Traumatic Brain Injury

POLST = Physicians Orders For Life-Sustaining Treatment

ICU = Intensive Care Unit

VA = Veterans Affairs

Table 2: Final Cox Proportional Hazard regression models for overall survival using propensity-matched cohorts and robust standard error.

<b>Mortality</b>		<b>n (%)</b>	<b>Univariate HR (95% CI)</b>	<b>Multivariate HR (95% CI)</b>
Minority Status	<u>Non-Minority</u>	1500 (50.0)	Reference	Reference
	<u>Minority</u>	1500 (50.0)	1.83 (1.47-2.29, p<0.001)	2.21 (1.43-3.41, p<0.001)
Injury Type	<u>Blunt</u>	2853 (95.1)	Reference	Reference
	<u>Penetrating</u>	147 (4.9)	3.50 (2.52-4.89, p<0.001)	1.51 (0.64-3.59, p=0.350)

Probability of Survival	<u>Mean (SD)</u>	0.9 (0.1)	0.02 (0.01-0.04, p<0.001)	0.04 (0.02-0.08, p<0.001)
Operative Status	<u>Operative Patient</u>	1039 (34.6)	Reference	Reference
	<u>Non-Operative Patient</u>	1960 (65.4)	2.11 (1.66-2.69, p<0.001)	2.60 (1.55-4.35, p<0.001)

HR = Hazard Ratio

SD = Standard Deviation