

## **Association of HIV with COVID-19 Outcomes Among Hospitalized Adults**

### **Brief title: Association of HIV with COVID-19 Hospitalization Outcomes**

Matthew S. Durstenfeld, MD,<sup>a,b</sup> Kaiwen Sun, MD,<sup>a</sup> Yifei Ma, MS,<sup>a,c</sup> Fatima Rodriguez, MD, MPH,<sup>d</sup> Eric A. Secemsky, MD, MSc,<sup>e,f</sup> Rushi V. Parikh MD,<sup>g</sup> and Priscilla Y. Hsue, MD<sup>a,b</sup>

a Department of Medicine, University of California, San Francisco, CA, USA

b Division of Cardiology, UCSF at Zuckerberg San Francisco General Hospital, San Francisco, CA, USA

c San Francisco Veteran's Affairs Medical Center, San Francisco, CA, USA

d Division of Cardiovascular Medicine and Cardiovascular Institute, Stanford University, Stanford, CA

e Smith Center for Outcomes Research in Cardiology; Department of Medicine, Division of Cardiology; Beth Israel Deaconess Medical Center, Boston, MA, USA.

f Harvard Medical School, Boston, MA, USA

g Division of Cardiology, University of California, Los Angeles, David Geffen School of Medicine, Los Angeles, CA, USA

**Sources of funding:** AHA's suite of Registries is funded by multiple industry sponsors. AHA's COVID-19 CVD Registry is partially supported by The Gordon and Betty Moore Foundation (Palo Alto, California). Dr Durstenfeld is supported by NIH/NHLBI 5T32HL007731-28. Dr. Rodriguez was funded by NIH/NHLBI K01 HL 144607 and the American Heart Association/Robert Wood Johnson Harold Amos Medical Faculty Development Program. Dr Secemsky is supported by NIH/NHLBI K23HL150290. Dr. Parikh is supported by American Heart Association 18CDA34110335. Dr Hsue is supported by NIH/NIAID 2K24AI112393-06.

**Disclosures:** MSD, KS, and YM have no disclosures. FR has received consulting fees from Novartis, Janssen, NovoNordisk, and HealthPals unrelated to this work. EAS reports unrelated research grants to BIDMC: AstraZeneca, BD, Boston Scientific, Cook, CSI, Laminate Medical, Medtronic and Philips and unrelated consulting/speaking fees from Abbott, Bayer, BD, Boston Scientific, Cook, CSI, Inari, Janssen, Medtronic, Philips, and VentureMed. RVP reports unrelated research support Janssen and Infraredx; consulting fees from Abbott Vascular; and scientific advisory board (minor equity interest) of Stallion Cardio, DocVocate, and HeartCloud. PYH has received honoraria from Gilead and Merck.

#### **Address for Correspondence:**

Matthew S. Durstenfeld, MD

Division of Cardiology, UCSF

Zuckerberg San Francisco General Hospital

1001 Potrero Avenue, 5G4

San Francisco, CA 94110, USA.

Tel: +1 628 206 5461; Fax: +1 628 206 5447

e-mail: [matthew.durstenfeld@ucsf.edu](mailto:matthew.durstenfeld@ucsf.edu)

twitter: @durstenfeld

**Acknowledgements:** The Get With The Guidelines® programs are provided by the American Heart Association (AHA). The AHA Precision Medicine Platform (<https://precision.heart.org/>) was used for data analysis. IQVIA (Parsippany, New Jersey) serves as the data collection and coordination center.

## Abstract

**Background:** Whether HIV infection is associated with differences in outcomes among people hospitalized with COVID-19 is uncertain.

**Objective:** To evaluate the association between HIV and COVID-19 outcomes among hospitalized patients.

**Methods:** Using the American Heart Association's COVID-19 Cardiovascular Disease registry, we used hierarchical mixed effects models to assess the association of HIV with in-hospital mortality accounting for patient demographics and comorbidities and clustering by hospital. Secondary outcomes included major adverse cardiac events (MACE), severity of illness, and length of stay (LOS).

**Results:** The registry included 21,528 hospitalization records of people with confirmed COVID-19 from 107 hospitals in 2020, including 220 people living with HIV (PLWH). PLWH were younger (56.0±13.0 versus 61.3±17.9 years old) and more likely to be male (72.3% vs 52.7%), Non-Hispanic Black (51.4% vs 25.4%), on Medicaid (44.5% vs 24.5%), and active tobacco users (12.7% versus 6.5%).

Of the study population, 36 PLWH (16.4%) had in-hospital mortality compared with 3,290 (15.4%) without HIV (Risk ratio 1.06, 95%CI 0.79-1.43; risk difference 0.9%, 95%CI -4.2 to 6.1%; p=0.71). After adjustment for age, sex, race, and insurance, HIV was not associated with in-hospital mortality (aOR 1.13; 95%CI 0.77-1.6; p 0.54) even after adding body mass index and comorbidities (aOR 1.15; 95%CI 0.78-1.70; p=0.48). HIV was not associated with MACE (aOR 0.99, 95%CI 0.69-1.44, p=0.91), severity of illness (aOR 0.96, 95%CI 0.62-1.50, p=0.86), or LOS (aOR 1.03; 95% CI 0.76-1.66, p=0.21).

**Conclusion:** In this large registry-based study, HIV was not associated with adverse outcomes of COVID-19 among hospitalized patients including in-hospital mortality, MACE, or severity of illness.

**Key Words:** COVID-19, SARS-CoV-2, HIV, human immunodeficiency virus, outcomes

**Abbreviations:** human immunodeficiency virus (HIV); people living with HIV (PLWH); major adverse cardiac events (MACE); adjusted odds ratio (aOR); length of stay (LOS); American Heart Association (AHA); acquired immunodeficiency syndrome (AIDS); body mass index (BMI)

## Introduction

There are limited data regarding risk of mortality among people living with human immunodeficiency virus (HIV; PLWH) hospitalized with COVID-19 (1). The prior severe acute respiratory syndrome epidemic suggested that people living with HIV/AIDS exposed to SARS-CoV-1 were not susceptible to infection with that coronavirus despite exposure (2). There is a case report of a patient with HIV/AIDS infected with EMC/2012, the coronavirus responsible for the Middle East Respiratory Syndrome epidemic which has a 60% mortality rate, who survived (3). Whether the experiences of PLWH with these prior coronaviridae are relevant to the present COVID-19 pandemic is uncertain.

It is possible that treatment with antiretroviral therapy among PLWH may decrease risk of severe disease or mortality after exposure to SARS-CoV-2 compared with that of people without HIV. Secondly, if severe disease is related to excessive immune activation, it is possible that immunosuppression among PLWH, even those who are treated and virally suppressed, may decrease the risk of severe disease or mortality. Alternatively, by altering coagulation and thrombosis pathways activated in severe COVID-19, HIV coinfection may increase risk of cardiovascular complications including myocardial infarction, stroke, deep venous thrombosis and pulmonary embolism. Furthermore, with excess cardiovascular risk due to traditional cardiovascular risk factors and chronic inflammation from immune activation, PLWH may be more susceptible to cardiac injury or myocarditis due to a “third hit” from SARS-CoV-2 infection that results in higher mortality, cardiovascular complications, or post-acute sequelae of COVID-19. Prior work has demonstrated that PLWH with COVID-19 have higher prevalence of hypertension, diabetes, chronic kidney disease, and smoking compared to those with COVID-19 without HIV (4,5). As with people without HIV, cardiovascular risk factors are associated with

adverse COVID-19 outcomes among PLWH (5). Thus, SARS-CoV-2 infection may present with different disease severity and result in different clinical outcomes among PLWH (6).

Several small case series have found higher risks of hospitalization and mortality among PLWH (4,5) hospitalized with COVID-19, but most case series suggest that the acute course of PLWH is similar to people without HIV (7-12). In contrast, the largest study of 110 PLWH hospitalized with COVID-19 in the United Kingdom found a higher risk of 28-day mortality (13). With these conflicting data, whether coinfection with HIV portends worse outcomes among hospitalized patients with COVID-19 remains uncertain. Therefore, we used the American Heart Association's COVID-19 CVD Registry powered by Get with the Guidelines to study the association of HIV with COVID-19 outcomes among a large sample of hospitalized patients in the United States.

## **Methods**

### *Data Source/Study Population*

The Get With The Guidelines® programs are provided by the American Heart Association (AHA). As described previously, the AHA COVID-19 Cardiovascular Disease Registry is a quality improvement program that began in April 2020 and as of December 2020 included 21,528 hospitalization records from 107 participating hospitals, including a mix of academic and community hospitals from across the United States (14). Approximately 2000 variables are collected, including hospital characteristics, demographics, medical history, symptoms, vital signs, lab tests, and clinical outcomes. Records are uploaded by participating hospitals and a deidentified dataset is provided to investigators after review by a scientific review committee. The dataset included for this study includes records entered through December 2020.

### *Inclusion/Exclusion Criteria*

Participating hospitals were instructed to upload data on all adult patients who had been hospitalized with confirmed COVID-19 and who had been discharged at the time of registry data upload. We included all patients uploaded to the registry in this analysis.

### *Explanatory Variables*

The primary predictor was HIV status as defined by the medical record. Data regarding antiretroviral therapy, viral load, CD4 counts, and AIDS status were not included in the database. Other explanatory variables included age, sex, race, insurance, body mass index (BMI), other past medical history including hypertension, dyslipidemia, diabetes, smoking, chronic kidney disease, chronic lung disease, and time from symptom onset to admission. Insurance status was classified as Medicare, Medicaid, commercial, self/uninsured, and other/unable to determine. We also report values for initial laboratory tests upon admission to the hospital.

### *Outcomes*

The primary outcome was in-hospital mortality, defined by a discharge disposition of “expired.” The first secondary outcome was a composite endpoint of major adverse cardiovascular outcomes (MACE) defined by in-hospital mortality, myocardial infarction, stroke, incident heart failure or myocarditis, and cardiogenic shock (15). The next secondary outcome was the AHA COVID-19 Ordinal Scale defined as died, cardiac arrest, mechanical ventilation and shock requiring mechanical circulatory support, mechanical ventilation with shock requiring vasopressors/inotropes, mechanical ventilation only, and hospitalization only (15). The next

outcome was length of stay among survivors. Because PLWH were initially excluded from COVID-19 clinical trials, the final secondary outcome was participation in a COVID-19 clinical trial.

### *Missing Data*

There were few missing data among our included covariates with exception of BMI, which was missing in 2,422 people (18 with HIV). We imputed missing values using multiple imputation with a random forest algorithm (MissRanger) based on the height, weight, age, sex, ZIP code, hospital, and history of diabetes. No other variables included in our models had a significant proportion of missing values.

### *Statistical Analysis*

To characterize the study population stratified by HIV status, we report numbers and proportions for categorical variables and means with standard deviations for continuous variables. We used chi-squared test or Fisher's exact test for categorical variables, Student's t-test for normally distributed continuous variables, Mann-Whitney U test for non-normally distributed continuous variables, and Kruskal-Wallis test for ordinal variables. We used hierarchical logistic regression mixed-effects models with hospital modeled as random effects and HIV and other covariates as fixed effects to examine associations of HIV status with our primary and secondary outcomes with both unadjusted models and models adjusted for demographics and past medical history and account for clustering by hospital. For the ordinal scale we used a hierarchical multinomial logistic regression mixed-effects model for adjusted analyses. We included models adjusted only for age, sex, race, and insurance in case

comorbidities are mediators and models that are adjusted for age, sex, race, body mass index, and comorbidities to estimate the conditional effect of HIV independent of those potential confounders. P values for hierarchical models were generated by comparing the hierarchical model with HIV included with a similar model without HIV included using ANOVA. Wald estimates of confidence intervals were used for hierarchical models. P values of  $<0.05$  were considered significant for the primary and secondary outcomes.

### *Prespecified exploratory analyses*

As an alternative approach to address confounding due to differences between those with and without HIV, we conducted a pre-specified exploratory propensity-matched analysis. We used a 3:1 control to case nearest neighbor matching algorithm (MatchIt) including the same variables as our adjusted model, including facility and the imputed BMI value for those missing BMI.

The American Heart Association Precision Medicine Platform (<https://precision.heart.org/>) was used for data analysis using R version 3.6.0 and SAS version 3.8. IQVIA (Parsippany, New Jersey) serves as the data collection and coordination center. Institutional Review Board approval was granted by the University of California, San Francisco.

## **Results**

Among 21,528 hospitalizations for COVID-19 at 107 hospitals, the mean age was 61.2 $\pm$ 17.9 years and 9,884 (45.9%) were female. The population included 25.4% Hispanic/Latinx, 25.6% Non-Hispanic Black, 0.5% Native American, 4.0% Asian, 0.4% Pacific Islander, and

38.0% Non-Hispanic White. Of this cohort, there were 220 PLWH (1.0%), with characteristics described in detail in Table 1. PLWH were younger (56.0 $\pm$ 13.0 versus 61.3 $\pm$ 17.9 years old), more likely to be male (72.3% vs 52.7%), and more likely to be Non-Hispanic Black (51.4% vs 25.4%). PLWH were more likely to be on Medicaid (44.5% vs 24.5%) and less likely to be on Medicare (20.9% vs 30.3%). Time from symptom onset to admission was not different by HIV status (mean 6.2 vs 6.0; median 5 days for both). PLWH had lower mean BMI (29.4 versus 30.8 kg/m<sup>2</sup>) and were more likely to be active tobacco users (12.7% versus 6.5%). Laboratory findings are shown in Table 1: PLWH had lower serum creatinine (p=0.02) and higher d-dimer (p=0.01) compared to people without HIV, but no other significant differences. Despite having younger age, PLWH did not have significant differences in other comorbidities (Appendix: Supplementary Table A).

Of the study population, 36 PLWH (16.4%) had the primary outcome of in-hospital mortality compared with 3,290 (15.4%) patients without HIV (Central Illustration). In hospital-mortality was not significantly different by HIV status in unadjusted analysis (Risk ratio 1.06, 95% CI 0.79-1.43; risk difference 0.9%, 95% CI -4.2 to 6.1%; p=0.71).

As shown in Table 3, in unadjusted hierarchical regression models to account for clustering by hospital, HIV was not associated with in-hospital mortality (Model 1: OR 0.87; 95% CI 0.59-1.25; P 0.47). After adjustment for age, sex, race, and insurance, HIV remained unassociated with in-hospital mortality (Model 2: aOR 1.13 95% CI 0.77-1.6; p 0.54). This relationship persisted after adding body mass index and comorbidities (Model 3: aOR 1.15; 95% CI 0.78-1.70; p=0.48).



Accounting for clustering by hospital and patient factors, HIV was also not associated with increased risk of major adverse cardiac events (aOR 0.99; 95% CI 0.69-1.44;  $p=0.91$ ). Among those hospitalized with COVID-19, HIV was not associated with increased severity of illness as assessed by the American Heart Association's COVID Ordinal Scale (Figure 1,  $p=0.93$ ). In adjusted models, HIV was not associated with increased severity of disease (aOR 0.96; 95% CI 0.62-1.50;  $p=0.86$ ).

HIV was also not associated with differences in length of stay by unadjusted analysis (median 6 days with or without HIV;  $p=0.73$ ). After adjustment for demographics and past medical history, HIV was not associated with an increased length of stay (aOR 1.03; 95% CI 0.76-1.66,  $p=0.21$ ). Documented participation in a COVID-19 clinical trial was low and did not differ by HIV status (8.6% among PLWH and 9.2% among people without HIV,  $p=0.80$ ).

As a sensitivity analysis using propensity matching as an alternative approach to account for confounding, we found an increased effect size compatible with an association of HIV with increased risk of in-hospital mortality that was not statistically significant (OR 1.53, 95% CI 0.96-2.42,  $p=0.06$ ). In the propensity-matched analysis, there was not a significant association between HIV and MACE (aOR 1.17, 95% CI 0.76 1.77,  $p=0.45$ )

## **Discussion**

Among those hospitalized for COVID-19 at hospitals participating in the AHA COVID-19 Cardiovascular Disease registry, PLWH were younger and more likely to identify as Non-Hispanic Black, consistent with the demographics of PLWH in the United States. We found that HIV was not associated with in-hospital mortality among people hospitalized with COVID-19 at participating hospitals in both unadjusted and adjusted models. We also did not find significant

differences in severity of illness, major adverse cardiac events, or length of stay by HIV status.

Lastly, enrollment in COVID-19 clinical trials was not lower among PLWH compared to people without HIV.

### *Hypotheses regarding HIV as a risk factor*

Although we hypothesized that HIV could either decrease risk of mortality among PLWH via reduced severity of illness either by decreased immune response or partial effectiveness of HIV-targeted antiretroviral therapy against SARS-CoV-2, or increase risk of mortality due to changes in coagulation or increased cardiovascular risk factors, our findings do not support either of these hypotheses. We did not find evidence of reduced severity of illness among those hospitalized with HIV and SARS-CoV-2 coinfection to support our first hypothesis, and levels of CRP and ferritin were not significantly different. It remains possible that there are differences in mild or asymptomatic infection not requiring hospitalization. Despite finding higher d-dimer levels among PLWH, our findings also do not support our second hypothesis that HIV may increase risk of mortality via increased thrombotic complications of acute SARS-CoV-2 infection, as we did not find a difference in MACE. We did find a higher age-adjusted burden of cardiovascular risk factors among PLWH, but including cardiovascular risk factors in our models also did not change our findings.

### *Comparison with other studies of hospitalized PLWH*

As the largest hospital-based analysis in the United States to date, our finding that HIV is not independently associated with in-hospital mortality is consistent with several small case series among PLWH hospitalized with COVID-19 (7-11). Consistent with our results, the

Veterans Aging Cohort Study, which included 253 HIV+/COVID+ veterans, most of whom were not hospitalized, found similar risk of hospital admission (aHR 1.09, 95% CI 0.85 to 1.41), intensive care unit admission (aHR 1.08, 95% CI 0.72 to 1.62), and death (aHR 1.08, 95% CI 0.66 to 1.75) (12). Our study has additional power to confirm these findings among hospitalized patients.

Prior to our study, the two largest studies of PLWH hospitalized for COVID-19 were the HIV-COVID-19 consortium study (16) and the United Kingdom-based ISARIC WHO CCP study, which included 122 PLWH was previously the largest cohort of PLWH hospitalized for COVID-19 that included an HIV-negative control group (13). The HIV-COVID-19 consortium study was a multicenter registry that included 286 PLWH at 36 institutions mostly in the United States, of whom 164 were hospitalized. This descriptive study lacked a control group of people without HIV, but found a mortality rate of 16.5%, similar to that in our study. The ISARIC WHO CCP investigators found higher overall mortality than our study or the consortium study (26.7% among PLWH, 32.1% among those without HIV). They found no difference in crude mortality by HIV status, which is consistent with our findings. After adjustment for age, however, they found that HIV was associated with higher risk of mortality (1.47, 95% CI 1.01-2.14). Similar to their analyses, our results were not sensitive to inclusion or exclusion of comorbidities as potential mediators versus inclusion as potential confounders. Our data provide evidence that PLWH hospitalized with COVID-19 are not at significantly elevated risk of in-hospital mortality, major adverse cardiovascular events, or prolonged length of stay.

*Distinction of our findings from population-based registry data*

Our results are distinct from population-based registries in that we are estimating the association of HIV with in-hospital mortality conditional upon being admitted to a participating hospital rather than the marginal risk across a population. In particular, a large population-based registry in the United Kingdom (OpenSAFELY) (15) and a South African cohort study (4) both found higher population-based mortality rates among PLWH with COVID-19 compared to those without PLWH. A population-based approach may yield different results if HIV status is associated with presenting to a registry participating versus non-participating hospital and hospitals participating in the registry have different mortality rates than non-participating hospitals, or if HIV is associated with higher rates of admission. Therefore, we agree with those authors that the results of our hospital-based analysis do not argue against a meaningfully increased population-level risk among PLWH because our analysis is restricted to those with severe disease requiring hospitalization (17). Future studies may provide insights reconciling population-level differences in outcomes with our findings, which may be related to social determinants of health, differences in infection rates, and differences in severity.

### *Limitations*

The strengths of our study are that this is a large study population with over 21,000 people hospitalized at 107 hospitals with rigorous clinical adjudication of outcomes and detailed clinical phenotyping. The registry did not contain details regarding HIV such as treatment with antiretroviral therapy, CD4 counts, or viral loads. Despite diversity in hospital type and geographic location, the subset of hospitals participating in the registry may not be representative of all hospitals in the United States. Therefore, we focused not a population-based analysis to estimate marginal effects of the average additional risk of HIV but rather the conditional effect:

what additional risk might a person living with HIV face conditional upon being admitted to a participating hospital. Our analysis is limited by inclusion of fewer PLWH than anticipated and lower mortality rate than predicted early in the pandemic resulting in fewer events and wider confidence intervals than anticipated. Our measure of HIV status as listed in the “Past Medical History” is likely highly specific with imperfect sensitivity, so we expect bias toward the null if there is a true effect. We were careful that none of the variables included in our adjusted model are colliders or instrumental variables that would amplify bias. It remains possible that there is unmeasured confounding; to address this concern, we performed a propensity score-matched analysis in which we achieved good matching, but the results of this analysis were compatible with our findings as well as a significant association. As data are entered by each individual site, it is possible that there are variations in interpretation of the case definitions. We also did not account for calendar week or the local burden of the pandemic at a given hospital site as we hypothesized these should be non-differential with respect to HIV status.

## **Conclusions**

In this registry-based study of over 21,000 people hospitalized for COVID-19, 1.1% had a past medical history that included HIV. In-hospital mortality was similar among people with and without HIV. HIV is not independently associated with increased incidence of in-hospital mortality, incidence of MACE, or COVID-19 severity among adults hospitalized for COVID-19 at registry-participating hospitals. Therefore, our results support that HIV is neither a protective nor inherently high-risk feature among people hospitalized with COVID-19.

## **Perspectives**

Core Clinical Competencies:

*Competency in Patient Care:*

We did not find that HIV is associated with increased risk of in-hospital mortality or MACE among those hospitalized with COVID-19, nor is it a protective factor. Therefore, our findings do not support consideration of HIV status in estimating risks of adverse outcomes among those hospitalized with COVID-19.

*Translational Outlook:*

Further research is needed to reconcile our findings that PLWH hospitalized at hospitals participating with the AHA's COVID-19 Cardiovascular Disease registry are not at elevated risk of adverse outcomes with other studies that have found population-level differences in outcomes which may be related to social determinants of health, differences in infection rates, and differences in severity

## References

1. Fung M, Babik JM. COVID-19 in Immunocompromised Hosts: What we know so far. Clin Inf Dis 2020.
2. Chen XP, Li GH, Tang XP, Xiong Y, Chen XJ, Cao Y. Lack of severe acute respiratory syndrome in 19 AIDS patients hospitalized together. J Acquir Immune Defic Syndr. 2003;34(2):242-243.
3. Shalhoub S, AlZahrani A, Simhairi R, Mushtaq A. Successful recovery of MERS CoV pneumonia in a patient with acquired immunodeficiency syndrome: a case report. J Clin Virol. 2015;62:69-71.
4. Boulle A, Davies MA, Hussey H, et al. Risk factors for COVID-19 death in a population cohort study from the Western Cape Province, South Africa. Clin Infect Dis 2020..
5. Hadi YB, Naqvi SFZ, Kupec JT, Sarwari AR. Characteristics and outcomes of COVID-19 in patients with HIV: a multi-center research network study. AIDS. 2020.
6. Mascolo S, Romanelli A, Carleo MA, Esposito V. Could HIV infection alter the clinical course of SARS-CoV-2 infection? When less is better. J Med Virol. 2020.
7. Meyerowitz EA, Kim AY, Ard KL, et al. Disproportionate burden of COVID-19 among racial minorities and those in congregate settings among a large cohort of people with HIV. AIDS. 2020.
8. Vizcarra P, Pérez-Elías MJ, Quereda C, et al. Description of COVID-19 in HIV-infected individuals: a single-centre, prospective cohort. The Lancet HIV. 2020;7(8):e554-e564.
9. Sigel K, Swartz T, Golden E, et al. Covid-19 and People with HIV Infection: Outcomes for Hospitalized Patients in New York City. Clin Infect Dis. 2020.

10. Stoeckle K, Johnston CD, Jannat-Khah DP, et al. COVID-19 in Hospitalized Adults With HIV. *Open Forum Infect Dis*. 2020;7(8):ofaa327.
11. Karmen-Tuohy S, Carlucci PM, Zervou FN, et al. Outcomes Among HIV-Positive Patients Hospitalized With COVID-19. *J Acquir Immune Defic Syndr*. 2020;85(1):6-10.
12. Park LS, Rentsch CT, Sigel K, et al. COVID-19 in the largest US HIV cohort. *AIDS 2020: 23rd International AIDS Conference Virtual*. July 6-10, 2020. Abstract LBPEC23.
13. Gerreti AM, Stockdale AJ, Kelly SH, et al. Outcomes of Coronavirus Disease 2019 (COVID-19) Related Hospitalization Among People with Human Immunodeficiency Virus (HIV) in ISARIC World Health Organization (WHO) Clinical Characterization Protocol (UK): A prospective observational study. *Clin Inf Diseases* 2020.
14. Alger HM, Rutan C, Williams JH, et al. American Heart Association COVID-19 CVD Registry Powered by Get With The Guidelines. *Circ Cardiovasc Qual Outcomes*. 2020;13(8):e006967.
15. Rodriguez F, Solomon N, de Lemos JA, et al. Racial and Ethnic Differences in Presentation and Outcomes for Patients Hospitalized with COVID-19: Findings from the American Heart Association's COVID-19 Cardiovascular Disease Registry. *Circulation* 2020.
16. Dandachi D, Geiger G, Montgomery MW, et al. Characteristics, Comorbidities, and Outcomes in a Multicenter Registry of Patients with Human Immunodeficiency Virus and Coronavirus Disease 2019. *Clin Inf Diseases* 2020.
17. Bhaskaran K, Rentsch CT, MacKenna B, et al. HIV Infection and COVID-19 death: a population based cohort analysis of UK primary care data and linked national death registrations within the OpenSAFELY platform. *Lancet HIV* 2020.



**Table 1: Demographics and Baseline Characteristics by HIV status**

	HIV positive (n=220)	HIV negative (n=21,308)
Age	56.0 ± 13.0	62.3 ± 17.9
Female	61 (27.7%)	9,823 (46.1%)
Ethnicity/Race		
Hispanic/Latinx	60 (27.3%)	5,418 (25.4%)
Non-Hispanic Black	113 (51.4%)	5,418 (25.4%)
Native American	0	106 (0.5%)
Asian	1 (0.5%)	856 (4.0%)
Pacific Islander	0	78 (0.4%)
Non-Hispanic White	26 (11.8%)	8,176 (38.4%)
Other/Unable to Determine	20 (9.1%)	1,256 (5.9%)
Insurance		
Medicare	46 (20.9%)	6,448 (30.3%)
Medicaid	98 (44.5%)	5,228 (24.5%)
Commercial	56 (25.5%)	6,638 (31.2%)
Self/Uninsured	13 (5.9%)	2,077 (9.7%)
Other/Unable to Determine	7 (3.2%)	917 (4.3%)
Body Mass Index, kg/m <sup>2</sup> °	29.4 ± 7.9	30.8 ± 8.5
Past Medical History		
Hypertension	125 (56.8%)	12,548 (58.9%)
Dyslipidemia	69 (31.4%)	7,354 (34.5%)

Diabetes	88 (40.0%)	7,526 (35.3%)
Active Tobacco Use	28 (12.7%)	1,378 (6.5%)
Chronic Kidney Disease	35 (15.9%)	2,749 (12.9%)
Chronic Lung Disease	48 (21.8%)	3,967 (18.6%)
Symptom Onset to Admission (days) <sup>^</sup>	5.0 (IQR 2-9)	5.0 (IQR 2-8)
<b>Initial Laboratory Testing</b>		
WBC Count, k/uL <sup>*</sup>	6.70 (IQR 4.95-8.70)	7.00 (IQR 5.10-9.70)
Platelet Count, k/uL <sup>*</sup>	204 (IQR 143-260)	204 (IQR 167-267)
Serum Creatinine, mg/dl <sup>*</sup>	1.00 (IQR 0.94-1.64)	1.13 (IQR 0.80-1.47)
C reactive protein, mg/L <sup>^</sup>	64 (IQR 24-100)	57 (IQR 14-111)
Ferritin, ng/ml <sup>^</sup>	484 (IQR 273-1013)	563 (IQR 239-1157)
Troponin, ng/L <sup>^</sup>	10 (IQR 0-50)	11 (IQR 0-50)
BNP, pg/mL <sup>#</sup>	34 (IQR 19-94)	64 (IQR 23-223)
NT-Pro-BNP, pg/mL <sup>#</sup>	299 (IQR 61-1753)	217 (IQR 75-1607)
D-Dimer, ng FEU/mL <sup>#</sup>	850 (IQR 300-1231)	600 (IQR 410-1660)

Table 1 Legend: Baseline demographics, body mass index, time from symptom onset to admission, and admission laboratory testing. <sup>\*</sup>Missing <5%. <sup>°</sup>Missing 5-19%. <sup>^</sup>Missing 20-50%. <sup>#</sup>Missing 60-85%.

**Table 2: Crude Outcomes by HIV status**

	HIV positive (n=220)	HIV negative (n=21,308)
<b>In-Hospital Mortality</b>	36 (16.4%)	3,290 (15.4%)
<b>Major Adverse Cardiac Event</b>	40 (18.2%)	4,130 (19.4%)
<b>AHA COVID-19 Ordinal Scale</b>		
Died	36 (16.4%)	3,290 (15.4%)
Cardiac Arrest	0	93 (0.4%)
Mech. Vent + Mech Circ. Support	0	51 (0.2%)
Mech. Vent + Vasopressors/Inotropes	12 (5.5%)	775 (3.6%)
Mechanical Ventilation Only	6 (2.7%)	1,188 (5.6%)
Hospitalization Only	166 (75.5%)	15,911 (74.7%)
<b>Enrolled in COVID-19 Clinical Trial</b>	19 (8.6%)	1962 (9.2%)
<b>Length of Stay among Survivors, median</b>	6 (IQR 4-11)	6 (IQR 4-11)

Table 2 Legend: Major adverse cardiovascular outcomes (MACE) is defined as in-hospital mortality, myocardial infarction, stroke, incident heart failure or myocarditis, and cardiogenic shock

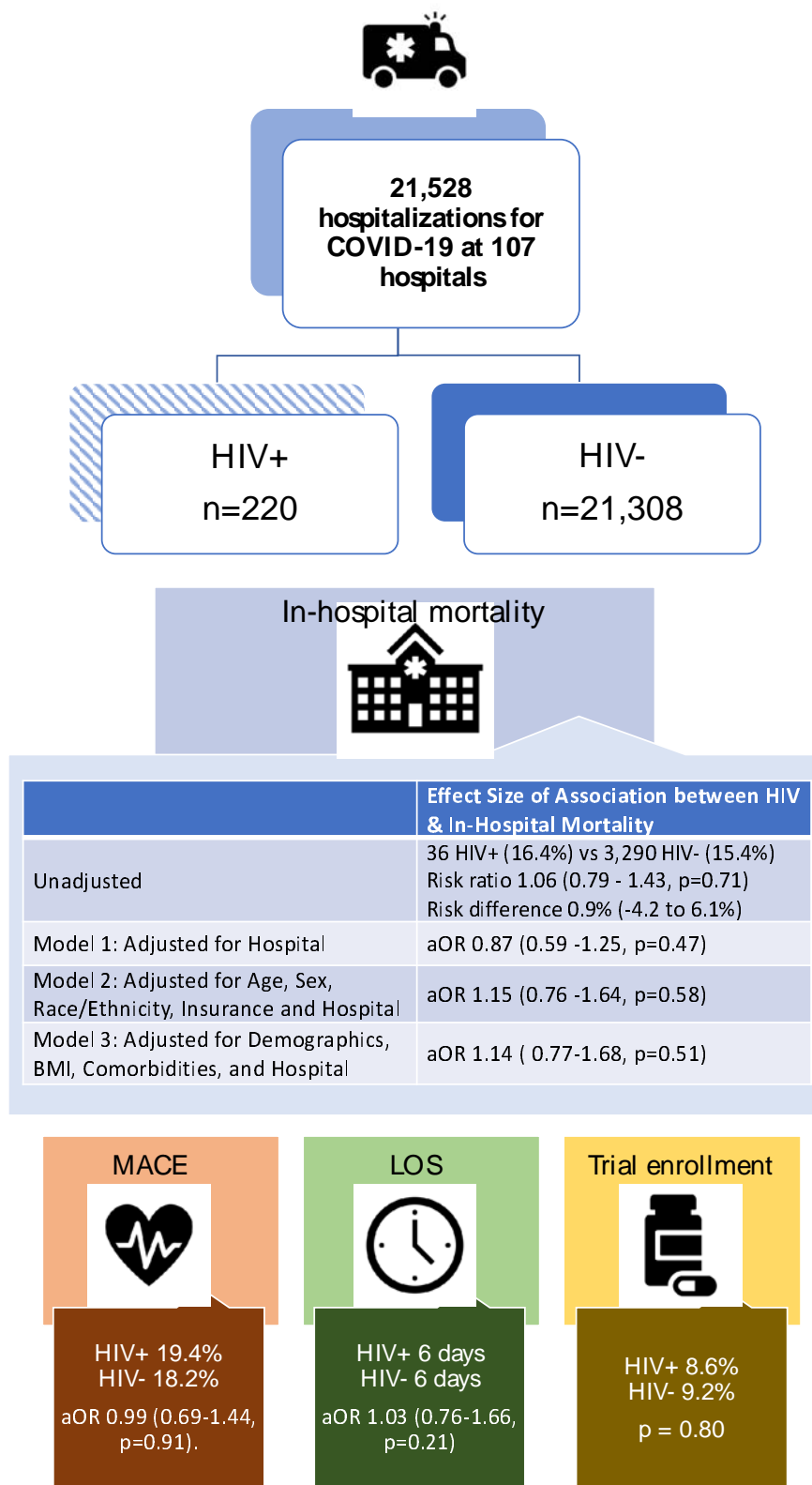
### **Table 3. Adjusted Odds Ratios for Conditional Association of HIV with In-Hospital**

#### **Mortality**

	Odds Ratio	95% CI	P value
Model 1	0.87	0.59-1.25	0.47
Model 2	1.15	0.76-1.64	0.58
Model 3	1.14	0.77-1.68	0.51

Table 3 Legend: HIV was not associated with in-hospital mortality in hierarchical mixed effects logistic regression analysis to account for clustering by hospital. Model 1 includes HIV (fixed effect) and hospital (random effects); Model 2 is adjusted for Age, Sex, Race, and Insurance; Model 3 is adjusted for demographics as in Model 2, body mass index, and past medical history. Confidence intervals are estimated via the Wald estimation and p-values are calculated by ANOVA compared to models excluding HIV.

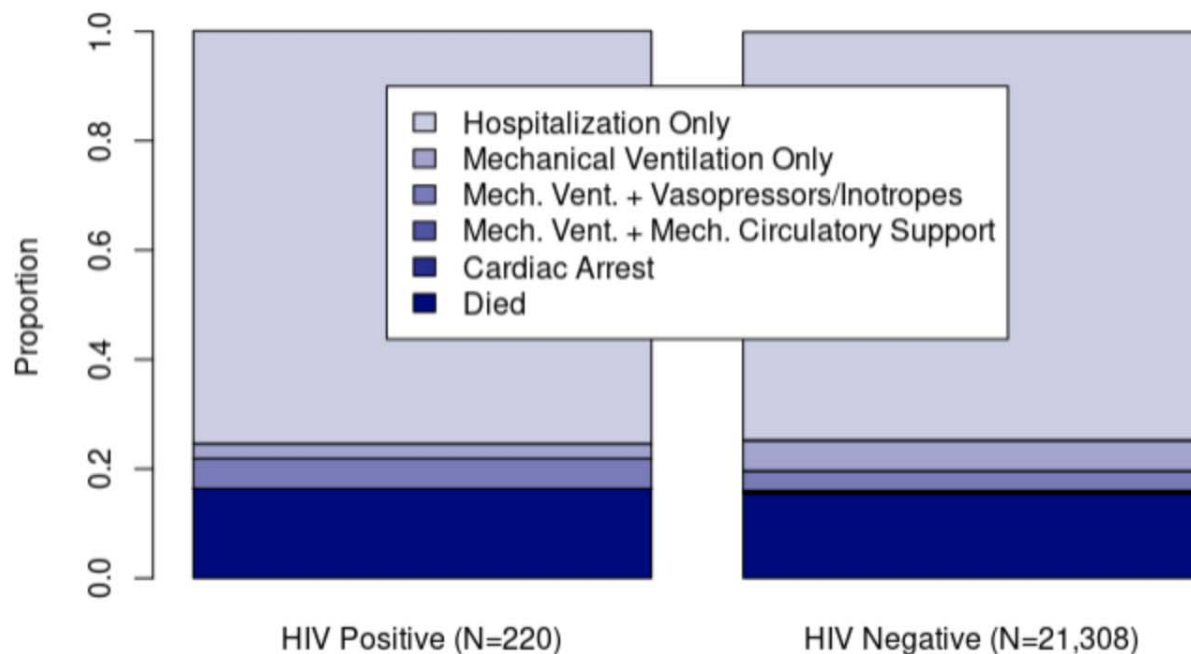
## Central Illustration



**Central Illustration: Association of HIV with COVID-19 Outcomes among Hospitalized Patients in the American Heart Association COVID-19 CVD Registry (n=21,528)**

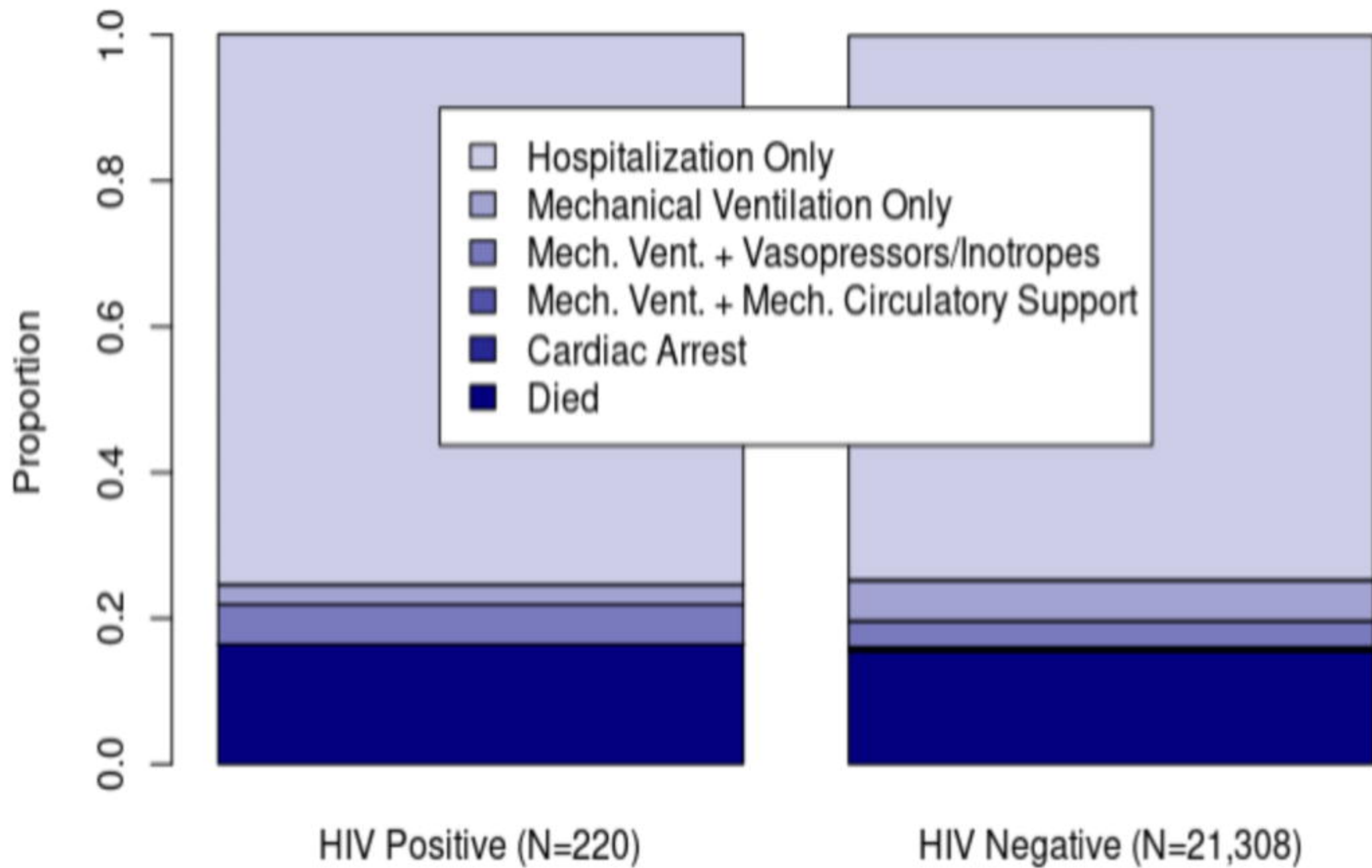
Central Illustration Legend: HIV was not found to have a significant association with in-hospital mortality among people hospitalized with COVID-19 in unadjusted analysis (Risk ratio 1.06, 95% CI 0.79-1.43; p=0.71) or after adjustment (aOR 1.15; 95%CI 0.78-1.70; p=0.48). HIV was also not found to have an association with MACE (aOR 0.99, 95%CI 0.69-1.44, p=0.91) or severity of illness (aOR 0.96, 95%CI 0.62-1.50, p=0.86. or adjusted analyses. aOR=adjusted odds ratio; MACE=major adverse cardiac events; LOS=Length of Stay.

**Figure 1**



**Figure 1: COVID-19 Ordinal Status by HIV**

Figure 1 Legend: HIV is not associated with differences in clinical severity as defined by the AHA COVID Ordinal Scale: Hospitalization, Mechanical Ventilation, Mechanical Ventilation and Vasopressors/Inotropes, Mechanical Ventilation and Mechanical Circulatory Support, Cardiac Arrest, and Death; ( $p=0.93$  by Kruskal-Wallis test). With adjustment for clustering by hospital and patient characteristics including demographics and comorbidities, HIV was not associated with increased severity of disease (aOR 0.96, 95%CI 0.62-1.50,  $p=0.86$ ).







medRxiv preprint doi: <https://doi.org/10.1101/2021.04.05.21254938>; this version posted April 7, 2021. The copyright holder for this preprint (which was not certified by peer review) is the author/funder, who has granted medRxiv a license to display the preprint in perpetuity. It is made available under a [CC-BY-NC-ND 4.0 International license](#).

21,528  
hospitalizations for  
COVID-19 at 107  
hospitals

HIV+  
n=220

HIV-  
n=21,308

In-hospital mortality



	Effect Size of Association between HIV & In-Hospital Mortality
Unadjusted	36 HIV+ (16.4%) vs 3,290 HIV- (15.4%) Risk ratio 1.06 (0.79 - 1.43, p=0.71) Risk difference 0.9% (-4.2 to 6.1%)
Model 1: Adjusted for Hospital	aOR 0.87 (0.59 - 1.25, p=0.47)
Model 2: Adjusted for Age, Sex, Race/Ethnicity, Insurance and Hospital	aOR 1.15 (0.76 - 1.64, p=0.58)
Model 3: Adjusted for Demographics, BMI, Comorbidities, and Hospital	aOR 1.14 (0.77-1.68, p=0.51)

MACE



HIV+ 19.4%  
HIV- 18.2%  
aOR 0.99 (0.69-1.44,  
p=0.91).

LOS



HIV+ 6 days  
HIV- 6 days  
aOR 1.03 (0.76-1.66,  
p=0.21)

Trial enrollment



HIV+ 8.6%  
HIV- 9.2%  
p = 0.80