

Title: Risk factors for severity on admission and the disease progression during hospitalization in a large cohort of COVID-19 patients in Japan

Mari Terada (0000-0002-5171-1828), R.Ph., M.P.H.^{1,2}, Hiroshi Ohtsu, M.Sc.², Sho Saito, M.D.¹,

Kayoko Hayakawa, M.D., Ph.D.^{1,3}, Shinya Tsuzuki, M.D., M.Sc.^{3,4}, Yusuke Asai, Ph.D.³,

Nobuaki Matsunaga, M.D., M.P.H., Ph.D.³, Satoshi Kutsuna, M.D., Ph.D.¹, Wataru Sugiura,

M.D., Ph.D.², Norio Ohmagari, M.D., M.Sc., Ph.D.^{1,3}

- 1) Department of Infectious Diseases, Disease Control and Prevention Center, National Center for Global Health and Medicine, Tokyo, Japan.
- 2) Center for Clinical Sciences, National Center for Global Health and Medicine, Tokyo, Japan.
- 3) AMR Clinical Reference Center, National Center for Global Health and Medicine, Tokyo, Japan.
- 4) Faculty of Medicine and Health Sciences, University of Antwerp, Antwerp, Belgium.

Center for Clinical Sciences/Disease Control and Prevention Center, National Center for Global Health and Medicine, 1-21-1 Toyama, Shinjuku-ku, Tokyo 162-8655, Japan. Mari Terada

pharmacist

Center for Clinical Sciences, National Center for Global Health and Medicine, 1-21-1 Toyama,

Shinjuku-ku, Tokyo 162-8655, Japan. Hiroshi Ohtsu statistician

Department of Infectious Diseases, Disease Control and Prevention Center, National Center for

Global Health and Medicine, 1-21-1 Toyama, Shinjuku-ku, Tokyo 162-8655, Japan. Sho Saito

physician

Department of Infectious Diseases, Disease Control and Prevention Center/AMR Clinical

Reference Center, National Center for Global Health and Medicine, 1-21-1 Toyama,

Shinjuku-ku, Tokyo 162-8655, Japan. Kayoko Hayakawa chief physician

AMR Clinical Reference Center, National Center for Global Health and Medicine, 1-21-1

Toyama, Shinjuku-ku, Tokyo 162-8655, Japan. Faculty of Medicine and Health Sciences,

University of Antwerp, Antwerp, Belgium. Shinya Tsuzuki senior researcher

AMR Clinical Reference Center, National Center for Global Health and Medicine, 1-21-1

Toyama, Shinjuku-ku, Tokyo 162-8655, Japan. Yusuke Asai senior researcher

AMR Clinical Reference Center, National Center for Global Health and Medicine, 1-21-1

Toyama, Shinjuku-ku, Tokyo 162-8655, Japan. Nobuaki Matsunaga section head

Department of Infectious Diseases, Disease Control and Prevention Center, National Center for

Global Health and Medicine, 1-21-1 Toyama, Shinjuku-ku, Tokyo 162-8655, Japan. Satoshi

Kutsuna chief physician

Center for Clinical Sciences, National Center for Global Health and Medicine, 1-21-1 Toyama,

Shinjuku-ku, Tokyo 162-8655, Japan. Wataru Sugiura director

Department of Infectious Diseases, Disease Control and Prevention Center/AMR Clinical

Reference Center, National Center for Global Health and Medicine, 1-21-1 Toyama,

Shinjuku-ku, Tokyo 162-8655, Japan. Norio Ohmagari director

Correspondence to: Sho Saito

Disease Control and Prevention Center

National Center for Global Health and Medicine, Tokyo, Japan

1-21-1 Toyama, Shinjuku-ku, Tokyo 162-8655, Japan

Tel: +81-3-3202-7181

Fax: +81-3-3207-1038

E-mail: ssaito@hosp.ncgm.go.jp

Word Count: 3025

Abstract

Objectives: To investigate the risk factors contributing to severity on admission.

Additionally, risk factors on worst severity and fatality were studied. Moreover, factors were compared based on three points: early severity, worst severity, and fatality.

Design: A observational cohort study utilizing data entered in a Japan nationwide COVID-19 inpatient registry, COVIREGI-JP.

Setting: As of August 31, 2020, 7,546 cases from 780 facilities have been registered. Participating facilities cover a wide range of hospitals where COVID-19 patients are admitted in Japan.

Participants: Participants who had a positive test result on any applicable SARS-CoV-2 diagnostic tests, and were admitted to participating healthcare facilities. A total of 3,829 cases were identified from January 16 to May 31, 2020, of which 3,376 cases were included in this study.

Primary and secondary outcome measures: Primary outcome was severe or non-severe on admission, determined by the requirement of mechanical ventilation or oxygen therapy, SpO₂, or respiratory rate. Secondary outcome was the worst severity during hospitalization, judged by the requirement of oxygen and/or IMV/ECMO.

Results: Risk factors for severity on admission were older age, male, cardiovascular disease, chronic respiratory disease, diabetes, obesity, and hypertension. Cerebrovascular disease, liver disease, renal disease or dialysis, solid tumor, and hyperlipidemia did not influence severity on admission ; however it influenced worst severity. Fatality rates for obesity, hypertension, and hyperlipidemia were relatively lower.

Conclusions: This study segregated the comorbidities driving severity and death. It is possible that risk factors for severity on admission, worst severity, and fatality are not consistent and may be propelled by different factors. Specifically, while hypertension, hyperlipidemia, and obesity had major effect on worst severity, their impact was mild on fatality in the Japanese population. Some studies contradict our results; therefore, detailed analyses, considering in-hospital treatments, are needed for validation.

Trial

registration: UMIN000039873. https://upload.umin.ac.jp/cgi-open-bin/ctr_e/ctr_view.cgi?recptno=R000045453

Strengths and limitations of this study

- In this article, we studied the disease progression of COVID-19, by comparing the risk factors on three points: early severity, worst severity, and fatality.

- Our results are useful from a public health perspective, as we provide risk factors for predicting the severity on admission and disease progression from patients' background factors.
- This study pointed out the possibility that risk factors of the severity on admission, worst severity, and fatality are not consistent and may be propelled by different factors.
- Our data were collected from hundreds of healthcare facilities; thus data accuracy may be questionable.
- Also, treatment type, dosage, duration, and combination varied immensely across the facilities and we did not consider treatments prior to and during hospitalization in the analysis.

Introduction

Coronavirus disease 2019 (COVID-19), caused by severe acute respiratory syndrome coronavirus-2 (SARS-CoV-2), has caused a major global public health crisis. As of October 3, 2020, >34 million people had been infected in over 230 countries^{1,2}. Japan experienced two pandemic waves after the first case reported on January 16, 2020. During the first wave, a state of emergency was declared on April 7, which ended on May 25, settling the first wave. Nearly thrice as many SARS-CoV-2 positive cases were detected in the second wave, which emerged from the end of June³. The fatality rate in the second wave has generally been lower in many countries, including Japan⁴.

When the number of patients explodes, hospital beds were in great shortage; hotels were utilized as isolation facilities in many countries⁵⁻⁷. Likewise, in Japan, mild patients were transferred to hotels from April 2020⁸. About two-thirds of cases did not require oxygen support throughout their illness⁹. However, some cases initiated non-severe may instantly plunge into a serious state and require aggressive care¹⁰. Therefore, public health centers are in demand for indicators to identify those at a higher risk of aggravation in the early phase and determine the destination—hospital, hotel, or home. Depicting the clinical course—from onset to worst severity and the outcome—is imperative to appropriately allocate patients to healthcare resources. Analyses considering the severity on admission and the disease progression thereafter

has not been conducted are of interest to physicians globally.

We obtained nationwide data from a COVID-19 inpatient registry, "COVID-19 REGISTRY JAPAN (COVIREGI-JP)"¹¹, and conducted a study to identify the independent risk factors contributing towards severity on admission. We aimed to determine the risk factors on admission, namely demographics and comorbidities. Progression of severity was inspected in detail on different time points. Cases identified within the period of the first pandemic wave were studied.

Methods

Study design and patients

This is an observational cohort study that utilizes the data accumulated in the nationwide "COVID-19 REGISTRY JAPAN (COVIREGI-JP)"¹¹. As of September 28, 2020, 10,048 cases from 802 facilities have been registered. Participating facilities covers a wide range of hospitals where COVID-19 patients are admitted in Japan. Enrolled cases satisfied two eligibility criteria: a positive test result for COVID-19 and being admitted to a healthcare facility. Registration started on March 2, 2020, and is ongoing, at present.

Data collection and case report form

Data were collected in a case report form (CRF) developed for COVIREGI-JP. This CRF includes modified information of the International Severe Acute Respiratory and Emerging Infection Consortium CRF on COVID-19¹². Upon modification, we elaborated on data collection, especially on treatments, comorbidities, and symptoms. In addition, as of October 26, 2020, this CRF underwent revisions twice to update therapeutic options or definitions, as new evidence emerges. Study data were collected and managed using Research Electronic Data Capture (REDCap) electronic data capture tools^{13,14}, hosted at the datacenter in National Center for Global Health and Medicine. Data were either recorded on a CRF hard-copy or were entered directly into REDCap at each facility.

Comorbidities

Comorbidities were collected based on Charlson comorbidity index^{15,16} with modifications. Some comorbidities were combined as follows: Cardiovascular disease (CVD)—myocardial infarction, congestive heart failure, and peripheral vascular disease; Chronic respiratory disease (CRD)—chronic obstructive pulmonary disease (COPD) and other chronic lung diseases; Renal disease or dialysis—moderate to severe renal disorder (creatinine \geq 3mg/dL, nephropathy, post-renal transplantation, or on dialysis), and maintenance hemodialysis or peritoneal dialysis before hospitalization; and Solid tumor—solid tumor with or without metastasis. Obesity was

diagnosed based on physician's judgement, and body mass index (BMI) was not considered in this study.

Drug administration prior to and during hospitalization

Steroids, chemotherapy, and immunosuppressants administered prior to hospitalization were collected as pre-hospitalization treatments. Steroids included those equivalent to 20 mg/day prednisolone for ≥ 1 month and are not considered as immunosuppressants. Chemotherapy and immunosuppressants was applicable if administered 3 months prior to hospitalization. Treatment during hospitalization was studied on systemic steroids, favipiravir, ciclesonide, heparin, and tocilizumab, due to the frequent use in Japan. Heparin use included those given for both prophylactic and treatment purposes.

Dataset

We defined the first wave period as January 16 to May 31, 2020¹⁷, and cases from the first wave was included in this analysis. Therefore, data extraction conditions were: (1) cases admitted to healthcare facilities between January 16 and May 31, 2020, and (2) all CRF items completed on dataset generation. The dataset was generated and fixed on September 2, 2020.

Definitions of severity

1) Severity on admission

Severity on admission was converted into bivariate variables: severe and non-severe. Cases met at least one of the following criteria were categorized as severe: (1) requiring invasive or non-invasive mechanical ventilation, (2) requiring supplemental oxygen, (3) $SpO_2 \leq 94\%$ in room air, or (4) tachypnea with respiratory rate (RR) ≤ 24 breaths per minute¹⁸. Those who did not meet the aforementioned were classified as non-severe.

2) Worst severity

The worst severity was grouped into three categories: no-oxygen, oxygen, and IMV/ECMO. The worst state during hospitalization was adopted on categorization, and each was defined as follows:

No-oxygen—No requirement of supplemental oxygen throughout hospitalization.

Oxygen—Required supplemental oxygen (including high-flow oxygen devices) or non-invasive mechanical ventilation during hospitalization.

IMV/ECMO—Required invasive mechanical ventilation or extracorporeal membrane oxygenation during hospitalization.

Statistical analysis

Continuous variables are presented in median and interquartile range (IQR) and categorical variables in number of cases and percentages. We classified the disease progression into three stages: severity on admission, worst severity, and clinical outcomes. We used Mann-Whitney U tests (for two groups) or Kruskal-Wallis tests (for three groups) for continuous variables and chi-squared tests for categorical variables.

We conducted a multivariable logistic regression analysis to identify the factors associated with the patients' severity on admission. We included age, sex, comorbidities (CVD, cerebrovascular disease, CRD, asthma, liver disease, diabetes, obesity diagnosed by physicians, renal disease or dialysis, solid tumors, leukemia, lymphoma, hypertension, and hyperlipidemia), use of systemic steroids in the past month, chemotherapy in the past three months, and use of immunosuppressants other than steroids as independent variables. Multicollinearity was evaluated using the variance inflation factor (VIF). Variables of $VIF > 3$ were excluded from the model; however, no variables demonstrated obvious multicollinearity.

R version 3.6.3 (R core team, 2020)¹⁹ was used for all the analyses performed in this study.

Ethics

The National Center for Global Health and Medicine ethics board approved this study (referral

number NCGM-G-003494-08), and waived the need for informed consent from individual patients owing to the non-invasive, non-interventional nature of this observational study according to the local Ethical Guidelines²⁰. Information regarding opting out of our study is available on the website¹¹. Although it is not mandatory, the study is also being registered on trial registration website (Unique ID: UMIN000039873, https://upload.umin.ac.jp/cgi-open-bin/ctr_e/ctr_view.cgi?recptno=R000045453).

Results

Within the study period, 3,829 cases were identified and 3,376 cases from 299 facilities were included in this study. Of them, 2,199 cases (65.1%) were non-severe, and 1,181 cases (34.9%) were severe at the time of admission. After categorizing the two groups further into no-oxygen, oxygen, and IMV/ECMO by worst severity, compositions were 1,758 (81.5%), 357 (16.5%), and 43 (2.0%) for the non-severe group and 190 (16.1%), 677 (57.5%), and 311 (26.4%) for the severe group, respectively. While categorizing the cases, 44 (1.3%) were unavailable due to missing values.

Demographics and clinical characteristics of the study population are shown in Table 1.

Days between onset and admission were similar in both groups (non-severe 6.0 vs severe 7.0 days). Over ten times as many severe cases on admission underwent IMV/ECMO than

non-severe cases (2.0% vs 26.4%). Severe cases were older (50.0 vs 67.0), had higher BMI (22.9 vs 24.1), greater male dominance (56.3% vs 70.5%), and a higher prevalence of comorbidities excluding leukemia, compared to the non-severe group. The most prevalent symptoms in both groups were fever (non-severe 49.5%, severe 73.7%), cough (non-severe 53.8%, severe 64.9%), and fatigue (non-severe 40.3%, 59.9%), but was greater in the severe group. Conversely, prevalence of dysgeusia (25.9% vs 13.2%), dysosmia (22.6% vs 11.5%), headache (18.1% vs 14.7%), and runny nose (11.9% vs 8.9%) was higher in the non-severe group.

Results of the multivariate logistic regression to determine the risk of severity on admission are shown in Table 2. Older age (OR 1.038 [1.032—1.044]) and male (OR 2.06 [1.69—2.51]) were considered a risk among the demographics and comorbidities included CVD (OR 1.61 [1.07—2.43]), respiratory disease (OR 2.59 [1.63—4.13]), diabetes (OR 1.39 [1.09—1.76]), obesity (OR 1.62 [1.12—2.35]), and hypertension (OR 1.31 [1.03—1.67]). Days between onset to admission were non-significant ($p = 0.376$); the timing of admission did not affect the severity on admission.

Table 3 depicts the study population from a different angle and is categorized by the worst severity (n=3,336) and fatality (n=3,376). Oxygen and IMV/ECMO cases were predominantly severe at admission (65.5% and 87.9%, respectively), whereas most no-oxygen

cases come from non-severe group (90.2%). Prevalence of comorbidities was lowest in no-oxygen cases; however, prominent difference was not observed for asthma. Similarly, fatal cases were more severe at admission (84.0% vs 31.1%) and had higher prevalence of oxygen and IMV/ECMO cases (oxygen: 56.4% vs 29.0%, IMV/ECMO: 41.9% vs 8.2%, respectively). Days between onset and admission was longer in non-fatal cases (5-days vs 7-days).

More non-severe cases with any comorbidity underwent treatment with oxygen or IMV/ECMO compared to non-severe cases with no comorbidities. In figure 1, only 11.9% underwent oxygen therapy or IMV/ECMO in non-severe cases without any comorbidities. However, among the non-severe cases with comorbidity, the rates of oxygen or IMV/ECMO were higher in most comorbidities, including CVD (34.7%), CRD (38.9%), liver disease (36.7%), diabetes (35.1%), obesity (35.8%), cerebrovascular disease (34.7%), renal disease (40.9%), solid tumor (27.3%), hypertension (31.2%), and hyperlipidemia (25.0%). Asthma alone followed a different trend; the chances of oxygen and IMV/ECMO requirement was lower.

Among the cases without comorbidity, 75.2% of cases that were severe on admission required oxygen or IMV/ECMO; however, the fatality rate was low, and only 8.0% resulted in death (Figure 2). Fatality rates were approximately 3—5 times higher when the following comorbidities were present: renal disease or dialysis (44%), CVD (40.5%), cerebrovascular

disease (39.5%), CRD (30.4%), solid tumor (30.4%), diabetes (25.8%), and liver disease (25.6%). Even among non-severe cases, relatively high fatality rate was observed in cases with solid tumor, CRD, cerebrovascular disease, CVD, and renal disease or dialysis, with fatality rates ranging from 8.1% to 11.1%. Collectively, obesity, hypertension, and hyperlipidemia influenced the worst severity; however, their influence on fatality was relatively lower than that mentioned earlier.

Older age was relevant to both worst severity and fatality, as shown in supplemental figures 1 and 2. The combined proportion of oxygen and IMV/ECMO increased gradually by age from 5.3% in 20s to 69.3% in ≥ 80 s. Conversely, the fatality rate leaped between 60s (2.2%) and 70s (8.6%). Likewise, supplemental figure 3 shows the combined proportion of oxygen and IMV/ECMO and fatality rates as higher in older individuals, irrespective of underlying comorbidities.

Predominant comorbid cases required more drug administration than those without comorbidities (Supplementary Table 1). Systemic steroids were most frequently used in cases with CRD (27.9%). Heparin was used most often in renal disease (12.8%), hypertension (11.2%), diabetes (10.9%), and CVD (10.4%).

Discussion

We took disease progression into consideration and evaluated the study population based on severity on admission, worst severity, and the outcome. To our knowledge, studies have predominantly reported worst severity, whereas disease progression has not been considered. Our findings, therefore, are novel, augmenting the evidence needed to depict the clinical course and trajectory from onset to worsening condition. Specifically, this study segregated the comorbidities influencing severity and death. Based on our findings, it may be possible that the early severity, worst severity, and death are propelled by different factors, whilst confirmation is necessary by multivariate analysis.

The majority of comorbidities we studied did not influence severity on admission. On admission, severity was driven by age, sex, CVD, CRD, diabetes, obesity, and hypertension. The trend was similar for the worst severity, as cases with these factors had higher rate of oxygen or IMV/ECMO. However, all comorbidities appeared to influence the worst severity.

Within the comorbidities, the prognosis of cases with obesity, hypertension, or hyperlipidemia was relatively favorable. In contrast to our results, hypertension and obesity are reportedly related to an increased risk of severity and mortality²¹⁻²⁴. However, a large cohort reported a trend similar to our results²⁵. Another study reported that obesity is be confounded by age and sex^{26,27}. Obesity was judged by a physician in our study, and the results may change after incorporating BMI. Several other evidences suggest that the association of these

comorbidities with poorer outcome of COVID-19 needs further investigation. BMI, on average, is lower in the Asia-Pacific region than in other global regions²⁸; therefore, the degree of obesity may have been milder in our study population. Extreme obesity may worsen the prognosis, and confounders should be addressed in consecutive analyses. On the other hand, the presence of hypertension and the use of angiotensin-converting enzyme (ACE) inhibitors and angiotensin II receptor blockers act contrarily²⁹⁻³¹, while ACE2 mediates the entry of SARS-CoV-2 into host cells^{32,33}, making the COVID-19 pathophysiology in hypertensive patients intricate. Our study suggested that hypertension, hyperlipidemia, and obesity could be less detrimental on fatality.

In accordance with previous studies, CVD, CRD, liver disease, diabetes, cerebrovascular disease, renal disease or dialysis, and solid tumor were associated with to fatality and worst severity. Two meta-analyses have reported common risk factors for worst severity during hospitalization, which include, diabetes, COPD, malignancy, CVD, and cerebrovascular disease^{34,35}. Other studies have also reported chronic liver disease and renal disease as risk factors³⁶⁻³⁸. Studies have elucidated that acute respiratory distress syndrome and coagulation dysfunction are related to the renin-angiotensin-aldosterone system and blood coagulation pathways, which are altered by SARS-CoV-2 host cell invasion via ACE2³⁹⁻⁴¹. Clinical and non-clinical studies revealed an association between these comorbidities; while SARS-CoV-2 infection decreases ACE2 expression, ACE2 deficiency is reported to cause

cardiac overload and kidney inflammation⁴¹⁻⁴⁴. Elevated blood glucose is also associated with mortality⁴⁵. Although risk factors vary among studies, the comorbidities we identified are highly likely associated with fatality, backed up by clinical and non-clinical results.

Different trends were seen in the rates of IMV/ECMO and death for each comorbidity.

Although rates of IMV/ECMO were comparable in all comorbid cases, those with obesity, asthma, hyperlipidemia, and hypertension showed a lower fatality rate, suggesting that the fatality rates within the IMV/ECMO cases with these comorbidities were lower than expected. Contrarily, fatality rates in cases with CVD, cerebrovascular disease, renal dysfunction, tumor, and CRD were comparable or higher than IMV/ECMO rates. The number of death actually exceeded the number of IMV/ECMO cases in patients with tumor, cerebrovascular disease, or CVD. These comorbidities likely have caused a higher risk of death and some even died without intubation. Healthcare nearly overwhelmed in the first wave in Japan but ICU capacity was maintained⁴⁶, and thus intubation may have been unperformed due to a medical judgment. A detailed examination of these issues is necessary in the future.

Our results did not show prominent difference in fatality between males and females.

Oftentimes, males are considered to develop severe conditions and increased fatality^{37,38,47-49}.

However, according to Global Health 5050, sexual disparity in incidence of COVID-19 is low⁵⁰.

Additionally, ACE2 expression is affected by sexual hormones, whereby higher expression is

observed in men, possibly explaining the sexual disparity⁵¹⁻⁵³. Moreover, the immunological response to produce antibodies is more favorable in females⁵⁴. These studies support the rationale that males are more susceptible to severe COVID-19, which contravene our results. The lower-than-expected fatality rate in our male population may be attributed to comorbidity prevalence, treatments, age, and/or degree of obesity.

Fatality rates were comparable between asthmatic and cases without comorbidities in our results. Theoretically, COVID-19 can be a risk for asthmatic patients. A viral respiratory infection is presented as relatively worse and causes asthma exacerbation^{55,56}. Asthmatic patients reportedly require a longer duration of mechanical ventilation when intubated⁵⁷; however, no study, including ours, has found strong evidence on severity or mortality⁵⁸⁻⁶¹. Inhaled corticosteroids (ICS) are known to downregulate ACE2^{62,63} and are being investigated for treating COVID-19⁶⁴. ICS may have impeded aggravation in asthmatic patients with COVID-19⁶⁵. Overall, further studies are needed to elucidate the true risk of asthma on COVID-19.

Our results could be useful to roughly identify those at a risk of aggravation or death. Days from onset to admission was not a risk factor; early hospitalization will not influence the disease progression or outcome, and severity on admission was mostly driven by age and the presence of a few comorbidities. Several studies have created a scoring system to predict the

risk of severity or mortality⁶⁶⁻⁶⁸. However, these utilize laboratory data collected on admission and are seldom practical for estimating the severity of illness prior to medical visits or when test results are not promptly available. While these are useful to predict prognosis more precisely, our results are useful from a public health perspective, as they provide risk factors for predicting the severity on admission and disease progression from patients' background factors.

Our study has several limitations. In some of our analyses, confounders were not eliminated. We did not consider treatments prior to and during hospitalization. As our data were collected from hundreds of healthcare facilities, treatment type, dosage, duration, and combination varied immensely. We plan to deliberate the analytical methodology further to evaluate the outcomes which are prone to be affected by in-hospital treatments. Data were collected from numerous facilities; therefore, accuracy may be questionable. Additionally, hotels were utilized as isolation facilities from April 2020, and participant selection might have altered thereafter. COVIREGI-JP is continuously open for new entry; the number of registrations is increasing, and subsequent results may vary from ours.

Conclusion

On admission, factors that influence severity were age, sex, and comorbidities, including CVD, CRD, diabetes, obesity, and hypertension. Risk factors for severity on

admission, worst severity, and fatality were not consistent, and it is likely that they are each propelled by different factors. Our results are practically useful for predicting the progression and preparing for the worst, based on patients' backgrounds. Moreover, based on our predictions, healthcare resources can be allocated to patients in the most suitable way.

Acknowledgments

We thank all the participating facilities for their care towards COVID-19 patients and cooperation during data entry. We are especially grateful for the 299 facilities that contributed to the dataset used in this study.

Contributorship statement

MT conceived and HO, SS, KH, ST and MT designed the study. ST, YA, SS, KH, and MT analyzed and interpreted the data. MT and ST drafted the first version of the manuscript. All the authors contributed to, read, and approved the final manuscript. The corresponding author attests that all listed authors meet authorship criteria and that no others meeting the criteria have been omitted. SS is the guarantor.

Funding

This study was funded by Health and Labor Sciences Research Grant, “Research for risk assessment and implementation of crisis management functions for emerging and re-emerging infectious diseases”, provided by the Japanese Ministry of Health, Labour, and Welfare. The funding agency did not assume any role in this study or COVIREGI-JP.

Competing Interests

All authors have completed the ICMJE uniform disclosure form at www.icmje.org/coi_disclosure.pdf and declare: no support from any organisation for the submitted work; H.O. reports personal fees as a statistician and as an external consultant for clinical trials from EPS International, outside the submitted work; no other relationships or activities that could appear to have influenced the submitted work.

Transparency Statement

The corresponding author affirms that this manuscript is an honest, accurate, and transparent account of the study being reported; that no important aspects of the study have been omitted; and that any discrepancies from the study as planned (and, if relevant, registered) have been explained.

Data sharing

Data on an individual level is shared with limitation to participating healthcare facilities through applications to COVIREGI-JP¹¹.

Patient and Public Involvement

No patient was involved in the setting of research question, outcome measures, or study design, nor were they involved in the recruitment to and conduct of the study.

Dissemination to participants and related patients and public communities

The study results will be shared with all the healthcare facilities which participated and registered data in COVIREGI-JP. It will also be shared with the public on the website¹¹.

Reference

1. World Health Organization. Coronavirus disease (COVID-19) pandemic. <https://www.who.int/emergencies/diseases/novel-coronavirus-2019>. Accessed October 3, 2020
2. Huang C, Wang Y, Li X, et al. Clinical features of patients infected with 2019 novel coronavirus in Wuhan, China [published correction appears in Lancet. 2020 Jan 30;:]. Lancet. 2020;395(10223):497-506. doi:10.1016/S0140-6736(20)30183-5
3. Our World in Data. Japan: Coronavirus Pandemic Country Profile. <https://ourworldindata.org/coronavirus/country/japan?country=~JPN>. Accessed October 3, 2020.
4. Fan G, Yang Z, Lin Q, Zhao S, Yang L, He D. Decreased Case Fatality Rate of COVID-19 in the Second Wave: A study in 53 countries or regions [published online ahead of print, 2020 Sep 6]. Transbound Emerg Dis. 2020;10.1111/tbed.13819. doi:10.1111/tbed.13819
5. Bruni T, Lalvani A, Richeldi L. Telemedicine-enabled Accelerated Discharge of Patients Hospitalized with COVID-19 to Isolation in Repurposed Hotel Rooms. Am J Respir Crit Care Med. 2020;202(4):508-510. doi:10.1164/rccm.202004-1238OE
6. Fenton ME, Wasko K, Behl V, Froh J, Schmalenberg M. An Expanded COVID-19 Telemedicine Intermediate Care Model Utilizing Repurposed Hotel Rooms [published

- online ahead of print, 2020 Aug 13]. *Am J Respir Crit Care Med*. 2020;10.1164/rccm.202007-2902LE. doi:10.1164/rccm.202007-2902LE
7. Ramírez-Cervantes KL, Romero-Pardo V, Pérez-Tovar C, Martínez-Alés G, Quintana-Díaz M. A medicalized hotel as a public health resource for the containment of Covid-19: more than a place for quarantining [published online ahead of print, 2020 Aug 10]. *J Public Health (Oxf)*. 2020;fdaa129. doi:10.1093/pubmed/fdaa129
 8. Hayasaki E. Covid-19: how Japan squandered its early jump on the pandemic. *BMJ*. 2020;369:m1625. Published 2020 Apr 24. doi:10.1136/bmj.m1625
 9. Matsunaga N, Hayakawa K, Terada M, et al. Clinical epidemiology of hospitalized patients with COVID-19 in Japan: Report of the COVID-19 REGISTRY JAPAN [published online ahead of print, 2020 Sep 28]. *Clin Infect Dis*. 2020;ciaa1470. doi:10.1093/cid/ciaa1470
 10. Duan J, Wang X, Chi J, et al. Correlation between the variables collected at admission and progression to severe cases during hospitalization among patients with COVID-19 in Chongqing [published online ahead of print, 2020 May 29]. *J Med Virol*. 2020;10.1002/jmv.26082. doi:10.1002/jmv.26082
 11. COVID-19 REGISTRY JAPAN. <https://covid-registry.ncgm.go.jp/>. Accessed October 3, 2020.
 12. International Severe Acute Respiratory and Emerging Infection Consortium ISARIC).

COVID-19 Clinical Research Resources.

<https://isaric.tghn.org/covid-19-clinical-research-resources/>. Accessed October 3, 2020.

13. Harris PA, Taylor R, Thielke R, Payne J, Gonzalez N, Conde JG. Research electronic data capture (REDCap)--a metadata-driven methodology and workflow process for providing translational research informatics support. *J Biomed Inform.* 2009;42(2):377-381.
doi:10.1016/j.jbi.2008.08.010
14. Harris PA, Taylor R, Minor BL, et al. The REDCap consortium: Building an international community of software platform partners. *J Biomed Inform.* 2019;95:103208.
doi:10.1016/j.jbi.2019.103208
15. Charlson ME, Pompei P, Ales KL, MacKenzie CR. A new method of classifying prognostic comorbidity in longitudinal studies: development and validation. *J Chronic Dis.* 1987;40(5):373-383. doi:10.1016/0021-9681(87)90171-8
16. Schneeweiss S, Wang PS, Avorn J, Glynn RJ. Improved comorbidity adjustment for predicting mortality in Medicare populations. *Health Serv Res.* 2003;38(4):1103-1120.
doi:10.1111/1475-6773.00165
17. Ministry of Health, Labour, and Welfare. Fatality and Severity risk factor of COVID-19 (Article in Japanese). <https://www.mhlw.go.jp/content/10900000/000662183.pdf>. Accessed October 3, 2020.

18. Beigel JH, Tomashek KM, Dodd LE, et al. Remdesivir for the Treatment of Covid-19 - Final Report [published online ahead of print, 2020 Oct 8]. *N Engl J Med*. 2020;NEJMoa2007764. doi:10.1056/NEJMoa2007764
19. R Core Team (2020). R: A language and environment for statistical computing. R Foundation for Statistical Computing, Vienna, Austria. URL <https://www.R-project.org/>.
20. Ministry of Education, Culture, Sports, Science and Technology, Ministry of Health, Labour and Welfare. Ethical Guidelines for Medical Research Involving Human Subjects (Provisional translation). <https://www.mhlw.go.jp/file/06-Seisakujouhou-10600000-Daijinkanboukouseikagakuka/000080278.pdf>. Accessed October 26, 2020.
21. Hussain A, Mahawar K, Xia Z, Yang W, El-Hasani S. Obesity and mortality of COVID-19. Meta-analysis. *Obes Res Clin Pract*. 2020;14(4):295-300. doi:10.1016/j.orcp.2020.07.002
22. de Siqueira JVV, Almeida LG, Zica BO, Brum IB, Barceló A, de Siqueira Galil AG. Impact of obesity on hospitalizations and mortality, due to COVID-19: A systematic review [published online ahead of print, 2020 Jul 23]. *Obes Res Clin Pract*. 2020;S1871-403X(20)30553-6. doi:10.1016/j.orcp.2020.07.005
23. Pranata R, Lim MA, Huang I, Raharjo SB, Lukito AA. Hypertension is associated with increased mortality and severity of disease in COVID-19 pneumonia: A systematic review,

- meta-analysis and meta-regression. *J Renin Angiotensin Aldosterone Syst.* 2020;21(2):1470320320926899. doi:10.1177/1470320320926899
24. Lippi G, Wong J, Henry BM. Hypertension in patients with coronavirus disease 2019 (COVID-19): a pooled analysis. *Pol Arch Intern Med.* 2020;130(4):304-309. doi:10.20452/pamw.15272
25. Fried MW, Crawford JM, Mospan AR, et al. Patient Characteristics and Outcomes of 11,721 Patients with COVID19 Hospitalized Across the United States [published online ahead of print, 2020 Aug 28]. *Clin Infect Dis.* 2020;ciaa1268. doi:10.1093/cid/ciaa1268
26. Tartof SY, Qian L, Hong V, Wei R, Nadjafi RF, Fischer H, Li Z, Shaw SF, Caparosa SL, Nau CL, Saxena T, Rieg GK, Ackerson BK, Sharp AL, Skarbinski J, Naik TK, Murali SB. Obesity and Mortality Among Patients Diagnosed With COVID-19: Results From an Integrated Health Care Organization. *Ann Intern Med.* 2020 Aug 12:M20-3742. doi:10.7326/M20-3742. Epub ahead of print. PMID: 32783686; PMCID: PMC7429998.
27. Palaiodimos L, Kokkinidis DG, Li W, et al. Severe obesity, increasing age and male sex are independently associated with worse in-hospital outcomes, and higher in-hospital mortality, in a cohort of patients with COVID-19 in the Bronx, New York. *Metabolism.* 2020;108:154262. doi:10.1016/j.metabol.2020.154262
28. NCD Risk Factor Collaboration (NCD-RisC). Trends in adult body-mass index in 200

- countries from 1975 to 2014: a pooled analysis of 1698 population-based measurement studies with 19.2 million participants [published correction appears in *Lancet*. 2016 May 14;387(10032):1998]. *Lancet*. 2016;387(10026):1377-1396. doi:10.1016/S0140-6736(16)30054-X
29. Tikellis C, Bernardi S, Burns WC. Angiotensin-converting enzyme 2 is a key modulator of the renin-angiotensin system in cardiovascular and renal disease. *Curr Opin Nephrol Hypertens*. 2011;20(1):62-68. doi:10.1097/MNH.0b013e328341164a
30. Fang L, Karakiulakis G, Roth M. Are patients with hypertension and diabetes mellitus at increased risk for COVID-19 infection? [published correction appears in *Lancet Respir Med*. 2020 Jun;8(6):e54]. *Lancet Respir Med*. 2020;8(4):e21. doi:10.1016/S2213-2600(20)30116-8
31. Yang G, Tan Z, Zhou L, et al. Effects of Angiotensin II Receptor Blockers and ACE (Angiotensin-Converting Enzyme) Inhibitors on Virus Infection, Inflammatory Status, and Clinical Outcomes in Patients With COVID-19 and Hypertension: A Single-Center Retrospective Study. *Hypertension*. 2020;76(1):51-58. doi:10.1161/HYPERTENSIONAHA.120.15143
32. Zhou P, Yang XL, Wang XG, et al. A pneumonia outbreak associated with a new coronavirus of probable bat origin. *Nature*. 2020;579(7798):270-273.

- doi:10.1038/s41586-020-2012-7
33. Hoffmann M, Kleine-Weber H, Schroeder S, et al. SARS-CoV-2 Cell Entry Depends on ACE2 and TMPRSS2 and Is Blocked by a Clinically Proven Protease Inhibitor. *Cell*. 2020;181(2):271-280.e8. doi:10.1016/j.cell.2020.02.052
 34. Wang B, Li R, Lu Z, Huang Y. Does comorbidity increase the risk of patients with COVID-19: evidence from meta-analysis. *Aging (Albany NY)*. 2020;12(7):6049-6057. doi:10.18632/aging.103000
 35. Fang X, Li S, Yu H, et al. Epidemiological, comorbidity factors with severity and prognosis of COVID-19: a systematic review and meta-analysis. *Aging (Albany NY)*. 2020;12(13):12493-12503. doi:10.18632/aging.103579
 36. Zhou Y, He Y, Yang H, et al. Development and validation a nomogram for predicting the risk of severe COVID-19: A multi-center study in Sichuan, China. *PLoS One*. 2020;15(5):e0233328. Published 2020 May 18. doi:10.1371/journal.pone.0233328
 37. Patel U, Malik P, Usman MS, et al. Age-Adjusted Risk Factors Associated with Mortality and Mechanical Ventilation Utilization Amongst COVID-19 Hospitalizations-a Systematic Review and Meta-Analysis [published online ahead of print, 2020 Aug 29]. *SN Compr Clin Med*. 2020;1-10. doi:10.1007/s42399-020-00476-w
 38. Harrison SL, Fazio-Eynullayeva E, Lane DA, Underhill P, Lip GYH. Comorbidities

- associated with mortality in 31,461 adults with COVID-19 in the United States: A federated electronic medical record analysis. *PLoS Med.* 2020;17(9):e1003321. Published 2020 Sep 10. doi:10.1371/journal.pmed.1003321
39. Lazzaroni MG, Piantoni S, Masneri S, et al. Coagulation dysfunction in COVID-19: The interplay between inflammation, viral infection and the coagulation system [published online ahead of print, 2020 Aug 24]. *Blood Rev.* 2020;100745. doi:10.1016/j.blre.2020.100745
40. Sathler PC. Hemostatic abnormalities in COVID-19: A guided review. *An Acad Bras Cienc.* 2020;92(4):e20200834. doi:10.1590/0001-3765202020200834
41. Kuba K, Imai Y, Rao S, et al. A crucial role of angiotensin converting enzyme 2 (ACE2) in SARS coronavirus-induced lung injury. *Nat Med.* 2005;11(8):875-879. doi:10.1038/nm1267
42. Oudit GY, Kassiri Z, Patel MP, et al. Angiotensin II-mediated oxidative stress and inflammation mediate the age-dependent cardiomyopathy in ACE2 null mice. *Cardiovasc Res.* 2007;75(1):29-39. doi:10.1016/j.cardiores.2007.04.007
43. Crackower MA, Sarao R, Oudit GY, et al. Angiotensin-converting enzyme 2 is an essential regulator of heart function. *Nature.* 2002;417(6891):822-828. doi:10.1038/nature00786
44. Liu Z, Huang XR, Chen HY, Penninger JM, Lan HY. Loss of angiotensin-converting

- enzyme 2 enhances TGF- β /Smad-mediated renal fibrosis and NF- κ B-driven renal inflammation in a mouse model of obstructive nephropathy. *Lab Invest.* 2012;92(5):650-661. doi:10.1038/labinvest.2012.2
45. Wu J, Huang J, Zhu G, et al. Elevation of blood glucose level predicts worse outcomes in hospitalized patients with COVID-19: a retrospective cohort study. *BMJ Open Diabetes Res Care.* 2020;8(1):e001476. doi:10.1136/bmjdr-2020-001476
46. Fujii Y, Hirota K. Critical care demand and intensive care supply for patients in japan with covid-19 at the time of the state of emergency declaration in april 2020: a descriptive analysis. *Medicina.* 2020;56(10):530.
47. Xu L, Mao Y, Chen G. Risk factors for 2019 novel coronavirus disease (COVID-19) patients progressing to critical illness: a systematic review and meta-analysis. *Aging (Albany NY).* 2020;12(12):12410-12421. doi:10.18632/aging.103383
48. Zhao J, Li X, Gao Y, Huang W. Risk factors for the exacerbation of patients with 2019 Novel Coronavirus: A meta-analysis. *Int J Med Sci.* 2020;17(12):1744-1750. Published 2020 Jul 6. doi:10.7150/ijms.47052
49. Yu C, Lei Q, Li W, et al. Clinical Characteristics, Associated Factors, and Predicting COVID-19 Mortality Risk: A Retrospective Study in Wuhan, China. *Am J Prev Med.* 2020;59(2):168-175. doi:10.1016/j.amepre.2020.05.002

50. Global Health 5050. The COVID-19 Sex-Disaggregated Data Tracker. 2020.
<https://globalhealth5050.org/the-sex-gender-and-covid-19-project/>. Accessed October 3, 2020.
51. Gupte M, Thatcher SE, Boustany-Kari CM, et al. Angiotensin converting enzyme 2 contributes to sex differences in the development of obesity hypertension in C57BL/6 mice. *Arterioscler Thromb Vasc Biol.* 2012;32(6):1392-1399.
doi:10.1161/ATVBAHA.112.248559
52. Zhou X, Zhang P, Liang T, Chen Y, Liu D, Yu H. Relationship between circulating levels of angiotensin-converting enzyme 2-angiotensin-(1-7)-MAS axis and coronary heart disease. *Heart Vessels.* 2020;35(2):153-161. doi:10.1007/s00380-019-01478-y
53. Liu J, Ji H, Zheng W, et al. Sex differences in renal angiotensin converting enzyme 2 (ACE2) activity are 17 β -oestradiol-dependent and sex chromosome-independent. *Biol Sex Differ.* 2010;1(1):6. Published 2010 Nov 5. doi:10.1186/2042-6410-1-6
54. Cook IF. Sexual dimorphism of humoral immunity with human vaccines. *Vaccine.* 2008;26(29-30):3551-3555. doi:10.1016/j.vaccine.2008.04.054
55. Zheng XY, Xu YJ, Guan WJ, Lin LF. Regional, age and respiratory-secretion-specific prevalence of respiratory viruses associated with asthma exacerbation: a literature review. *Arch Virol.* 2018;163(4):845-853. doi:10.1007/s00705-017-3700-y

56. Papadopoulos NG, Christodoulou I, Rohde G, et al. Viruses and bacteria in acute asthma exacerbations--a GA² LEN-DARE systematic review. *Allergy*. 2011;66(4):458-468.
doi:10.1111/j.1398-9995.2010.02505.x
57. Mahdavinia M, Foster KJ, Jauregui E, et al. Asthma prolongs intubation in COVID-19. *J Allergy Clin Immunol Pract*. 2020;8(7):2388-2391. doi:10.1016/j.jaip.2020.05.006
58. Johnston SL. Asthma and COVID-19: Is asthma a risk factor for severe outcomes?. *Allergy*. 2020;75(7):1543-1545. doi:10.1111/all.14348
59. Li X, Xu S, Yu M, et al. Risk factors for severity and mortality in adult COVID-19 inpatients in Wuhan. *J Allergy Clin Immunol*. 2020;146(1):110-118.
doi:10.1016/j.jaci.2020.04.006
60. Liu S, Zhi Y, Ying S. COVID-19 and Asthma: Reflection During the Pandemic. *Clin Rev Allergy Immunol*. 2020;59(1):78-88. doi:10.1007/s12016-020-08797-3
61. Ssentongo P, Ssentongo AE, Heilbrunn ES, Ba DM, Chinchilli VM. Association of cardiovascular disease and 10 other pre-existing comorbidities with COVID-19 mortality: A systematic review and meta-analysis. *PLoS One*. 2020;15(8):e0238215. Published 2020 Aug 26. doi:10.1371/journal.pone.0238215
62. Kimura H, Francisco D, Conway M, et al. Type 2 inflammation modulates ACE2 and TMPRSS2 in airway epithelial cells. *J Allergy Clin Immunol*. 2020;146(1):80-88.e8.

- doi:10.1016/j.jaci.2020.05.004
63. Jackson DJ, Busse WW, Bacharier LB, et al. Association of respiratory allergy, asthma, and expression of the SARS-CoV-2 receptor ACE2. *J Allergy Clin Immunol.* 2020;146(1):203-206.e3. doi:10.1016/j.jaci.2020.04.009
64. Nicolau DV, Bafadhel M. Inhaled corticosteroids in virus pandemics: a treatment for COVID-19?. *Lancet Respir Med.* 2020;8(9):846-847. doi:10.1016/S2213-2600(20)30314-3
65. Johnson RM, Vinetz JM. Dexamethasone in the management of covid-19. *BMJ.* 2020;370:m2648. Published 2020 Jul 3. doi:10.1136/bmj.m2648
66. Zhao Z, Chen A, Hou W, et al. Prediction model and risk scores of ICU admission and mortality in COVID-19. *PLoS One.* 2020;15(7):e0236618. Published 2020 Jul 30. doi:10.1371/journal.pone.0236618
67. Shang Y, Liu T, Wei Y, et al. Scoring systems for predicting mortality for severe patients with COVID-19. *EclinicalMedicine.* 2020;24:100426. Published 2020 Jul 3. doi:10.1016/j.eclinm.2020.100426
68. Dong Y, Zhou H, Li M, et al. A novel simple scoring model for predicting severity of patients with SARS-CoV-2 infection [published online ahead of print, 2020 May 29]. *Transbound Emerg Dis.* 2020;10.1111/tbed.13651. doi:10.1111/tbed.13651

Table 1. Characteristics of patients included in the present study

	Non-severe (n=2196)	Severe (n=1180)
Fatal cases	39 (2)	204 (17)
Worst severity during hospitalization		
No oxygen	1796 (82)	192 (16)
Oxygen	357 (16)	678 (58)
IMV/ECMO^a	43 (2)	310 (26)
Days between onset and admission (median [IQR])	6 [4, 10]	7 [4, 10]
Age (median [IQR])	50 [35, 64]	67 [53, 78]
Male	1232 (56)	830 (71)
BMI (median [IQR])	22.9 [20.3, 25.7]	24.1 [21.5, 27.1]
Comorbidities		
Cardiovascular disease	62 (3)	121 (10)
Respiratory disease	36 (2)	104 (9)
Liver disease	49 (2)	39 (3)
Cerebrovascular disease	72 (3)	115 (10)
Asthma	102 (5)	64 (5)

Diabetes	262 (12)	300 (25)
Obesity	95 (4)	83 (7)
Severe renal disease or dialysis	22 (1)	25 (2)
Solid tumor	66 (3)	79 (7)
Leukemia	10 (1)	3 (0)
Lymphoma	16 (1)	9 (1)
Hypertension	292 (13)	331 (28)
Hyperlipidemia	176 (8)	157 (13)
Treatments prior to COVID-19		
Use of steroid in one month	6 (0)	10 (1)
Chemotherapy in three months	32 (2)	24 (2)
Immunosuppressants^b use in three months	26 (1)	18 (2)
Symptoms on admission		
Fever ($\geq 37.5^{\circ}\text{C}$)	1078 (49)	862 (74)
Cough	1167 (54)	716 (65)
Sore throat	340 (17)	142 (16)
Runny nose	239 (12)	86 (9)
Chest pain	95 (5)	44 (5)

Myalgia	172 (9)	79 (9)
Headache	361 (18)	136 (15)
Confusion	21 (1)	68 (6)
Fatigue	834 (40)	595 (60)
Abdominal pain	60 (3)	24 (3)
Vomit	88 (4)	59 (6)
Diarrhea	251 (12)	164 (16)
Dysgeusia	494 (26)	113 (13)
Dysosmia	422 (23)	96 (12)

^ainvasive mechanical ventilation/extracorporeal membrane oxygenation

^bimmunosuppressants other than steroids

Table 2. Factors associated with being “severe” at the time of admission

	Odds ratio	95% CI^a	P value
Days between onset and admission	1.0	0.99-1.01	0.960
Age	1.04	1.03-1.04	< 0.001
Male	2.09	1.76-2.48	< 0.001
Comorbidities			
Cardiovascular disease	1.48	1.04-2.10	0.028
Cerebrovascular disease	1.33	0.95-1.85	0.097
Chronic respiratory disease	2.51	1.67-3.78	< 0.001
Asthma	1.24	0.87-1.77	0.240
Liver disease	0.97	0.61-1.54	0.892
Diabetes	1.34	1.09-1.64	0.006
Obesity diagnosed by physicians	1.75	1.26-2.45	0.001
Severe renal disease or dialysis	1.0	0.54-1.88	0.991
Solid tumor	1.20	0.82-1.77	0.351
Leukemia	0.34	0.08-1.39	0.132
Lymphoma	0.42	0.16-1.11	0.081
Hypertension	1.33	1.08-1.64	0.008

Hyperlipidemia	0.91	0.70-1.19	0.490
Treatments prior to COVID-19			
Use of steroid in one month	1.65	0.52-5.22	0.394
Chemotherapy in three months	1.47	0.72-3.0	0.286
Immunosuppressants^b use in three months	1.35	0.69-2.64	0.384

^aconfidence interval

^bimmunosuppressants other than steroids

Table 3. Characteristics of patients stratified by non-fatal/fatal cases and severity during hospitalization

	Non-fatal (n=3129)	Fatal (n=243)	No-oxygen (n=1988)	Oxygen (n=1035)	IMV/ECMO^a (n=353)
Fatal cases			6 (0)	137 (13)	100 (28)
Severity on admission					
Non-severe	2155 (69)	39 (16)	1796 (90)	357 (35)	43 (12)
Severe	974 (31)	204 (84)	192 (10)	678 (66)	310 (88)
Worst severity during hospitalization					
No-oxygen	1980 (63)	6 (3)			
Oxygen	897 (29)	137 (56)			
IMV/ECMO	252 (8)	100 (41)			
Days between onset and admission (median [IQR])	7 [4, 10]	5 [2, 8]	7 [4, 10]	6 [3, 9]	7 [5, 10]
Age (median [IQR])	54 [40, 68]	80 [71, 86]	48 [33, 61]	68 [53, 80]	65 [56, 74]
Male	1899 (61)	161 (66)	1083 (55)	694 (67)	285 (81)

BMI (median [IQR])	23.3 [20.8, 26.3]	22.7 [19.4, 25.7]	22.6 [20.2, 25.5]	24.0 [21.5, 27.0]	24.8 [22.6, 27.8]
Cardiovascular disease	129 (4)	54 (22)	48 (2)	106 (10)	29 (8)
Respiratory disease	103 (3)	35 (14)	29 (2)	78 (8)	33 (9)
Liver disease	75 (2)	13 (5)	36 (2)	32 (3)	20 (6)
Cerebrovascular disease	135 (4)	51 (21)	57 (3)	105 (10)	25 (7)
Asthma	157 (5)	9 (4)	92 (5)	52 (5)	22 (6)
Diabetes	475 (15)	86 (35)	197 (10)	244 (24)	121 (34)
Obesity	169 (5)	9 (4)	70 (4)	75 (7)	33 (9)
Severe renal disease or dialysis	34 (1)	13 (5)	14 (1)	21 (2)	12 (3)
Solid tumor	114 (4)	31 (13)	60 (3)	63 (6)	22 (6)
Leukemia	9 (0)	4 (2)	6 (0)	7 (1)	0 (0)
Lymphoma	13 (0)	12 (5)	6 (0)	16 (2)	3 (1)
Hypertension	551 (18)	70 (29)	234 (12)	274 (27)	115 (33)
Hyperlipidemia	305 (10)	26 (11)	148 (7)	124 (12)	61 (17)
Use of steroid in one	10 (0)	5 (2)	4 (0)	8 (1)	4 (1)

month					
Chemotherapy in three months	38 (1)	18 (7)	21 (1)	30 (3)	5 (1)
Immunosuppressants^b use in three months	37 (1)	7 (3)	18 (1)	18 (2)	8 (2)
Fever ($\geq 37.5^{\circ}\text{C}$)	1737 (56)	199 (82)	897 (45)	758 (74)	285 (82)
Cough	1770 (58)	112 (52)	1034 (53)	643 (64)	206 (69)
Sore throat	459 (17)	23 (16)	316 (18)	125 (15)	41 (16)
Runny nose	311 (11)	13 (7)	224 (12)	79 (9)	22 (8)
Chest pain	136 (5)	3 (2)	88 (5)	46 (6)	5 (2)
Myalgia	242 (9)	9 (7)	148 (8)	84 (10)	19 (7)
Headache	486 (18)	11 (8)	333 (18)	138 (17)	26 (10)
Confusion	60 (2)	29 (14)	19 (1)	54 (6)	16 (5)
Fatigue	1323 (46)	104 (62)	709 (38)	560 (62)	160 (58)
Abdominal pain	79 (3)	5 (3)	53 (3)	25 (3)	6 (2)
Vomit	139 (5)	8 (5)	80 (4)	51 (6)	16 (6)
Diarrhea	397 (14)	18 (9)	236 (13)	143 (15)	36 (13)
Dysgeusia	128 (17)	25 (10)	454 (26)	128 (17)	25 (10)

Dysosmia	103 (14)	13 (6)	402 (23)	103 (14)	13 (6)
-----------------	----------	--------	----------	----------	--------

^a**invasive mechanical ventilation/extracorporeal membrane oxygenation**

^b**immunosuppressants other than steroids**

Supplementary Table. Proportion of therapeutics used for each comorbidity

	Number of patients	Systemic steroid	Favipiravir	Ciclesonide	Heparin	Tocilizumab
No comorbidity	1873	105 (6)	606 (32)	562 (30)	48 (3)	22 (1)
Obesity	178	34 (19)	109 (61)	72 (40)	17 (10)	5 (3)
Cardiovascular disease	183	30 (16)	86 (47)	46 (25)	19 (10)	6 (3)
Chronic respiratory disease	140	39 (28)	94 (67)	52 (37)	10 (7)	5 (4)
Diabetes	562	98 (17)	325 (58)	197 (35)	61 (11)	12 (2)
Hypertension	623	120 (19)	338 (54)	200 (32)	70 (11)	20 (3)
Cerebrovascular disease	187	34 (18)	93 (50)	42 (23)	15 (8)	7 (4)
Liver disease	88	15 (17)	57 (65)	32 (36)	5 (6)	3 (3)
Severe renal disease or dialysis	47	9 (19)	21 (45)	12 (26)	6 (13)	3 (6)
Solid tumor	145	20 (14)	68 (47)	34 (23)	6 (4)	1 (1)

Numbers in brackets represent percentages.

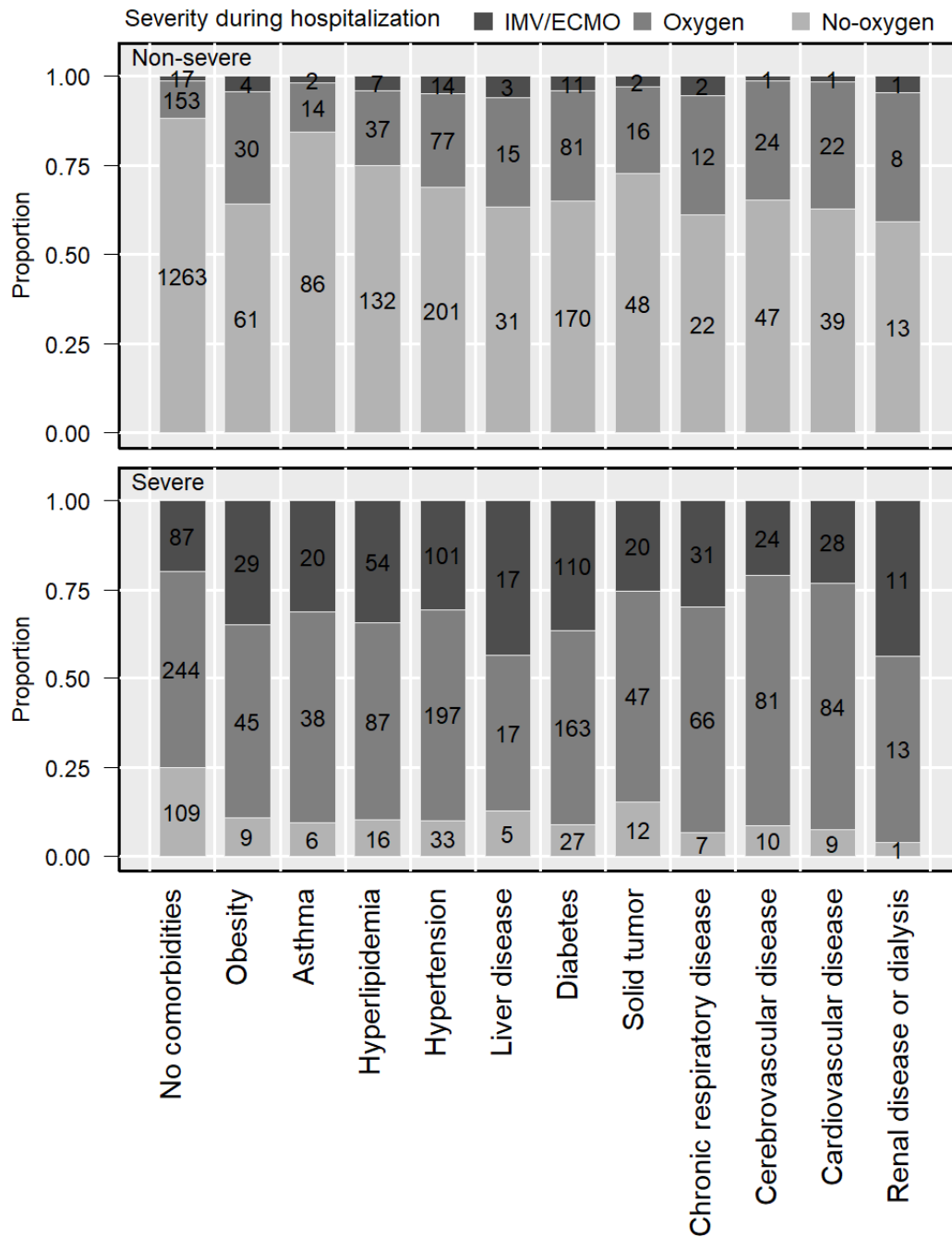


Figure 1. Distribution of the worst severity arranged by severe/non-severe at admission and

presence/absence of comorbidities.

Top bars represent non-severe cases at admission and bottom bars represent severe cases at admission. Each group of cases was divided based on the presence of comorbidities. Bars represent different categories of worst severity: light gray – no-oxygen, darker gray – oxygen, and darkest gray – IMV/ECMO.

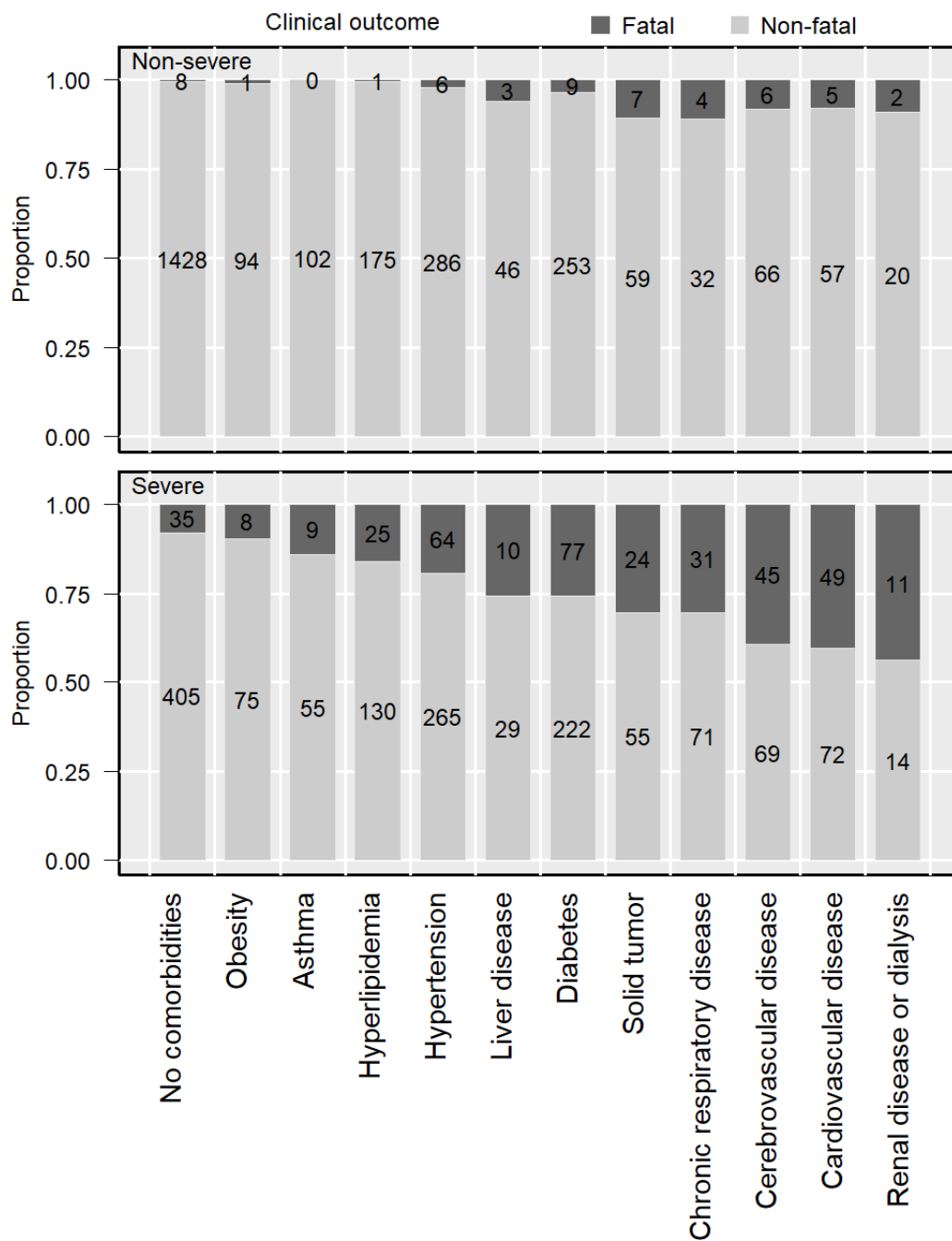
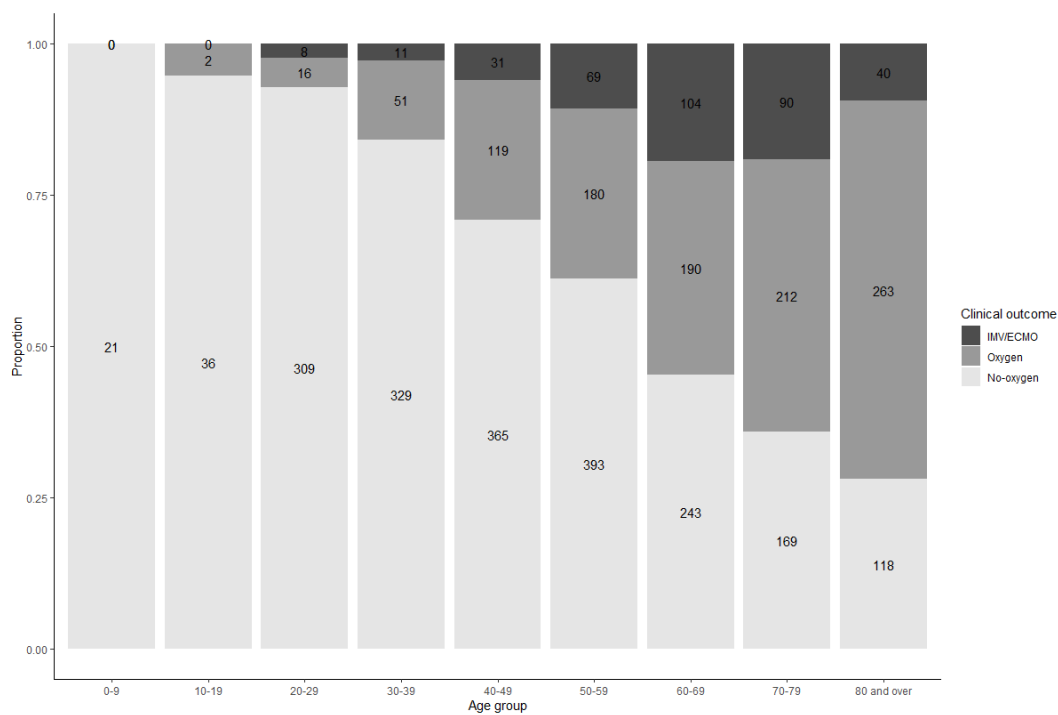


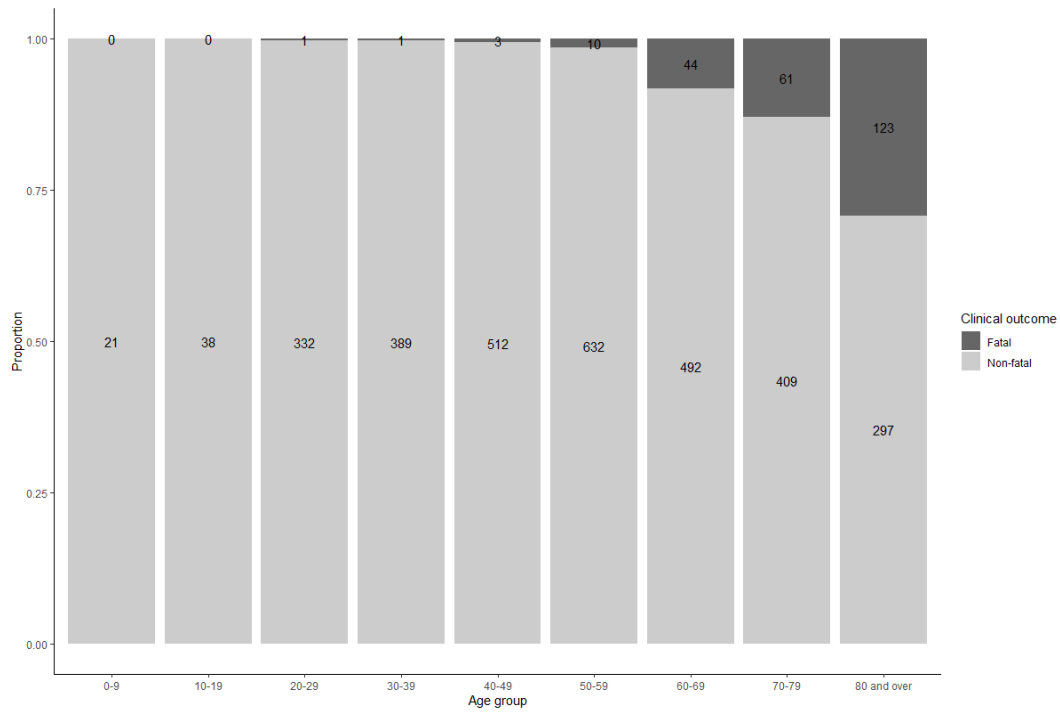
Figure 2. Distribution of the fatality arranged by severe/non-severe at admission and

presence/non-presence of comorbidities

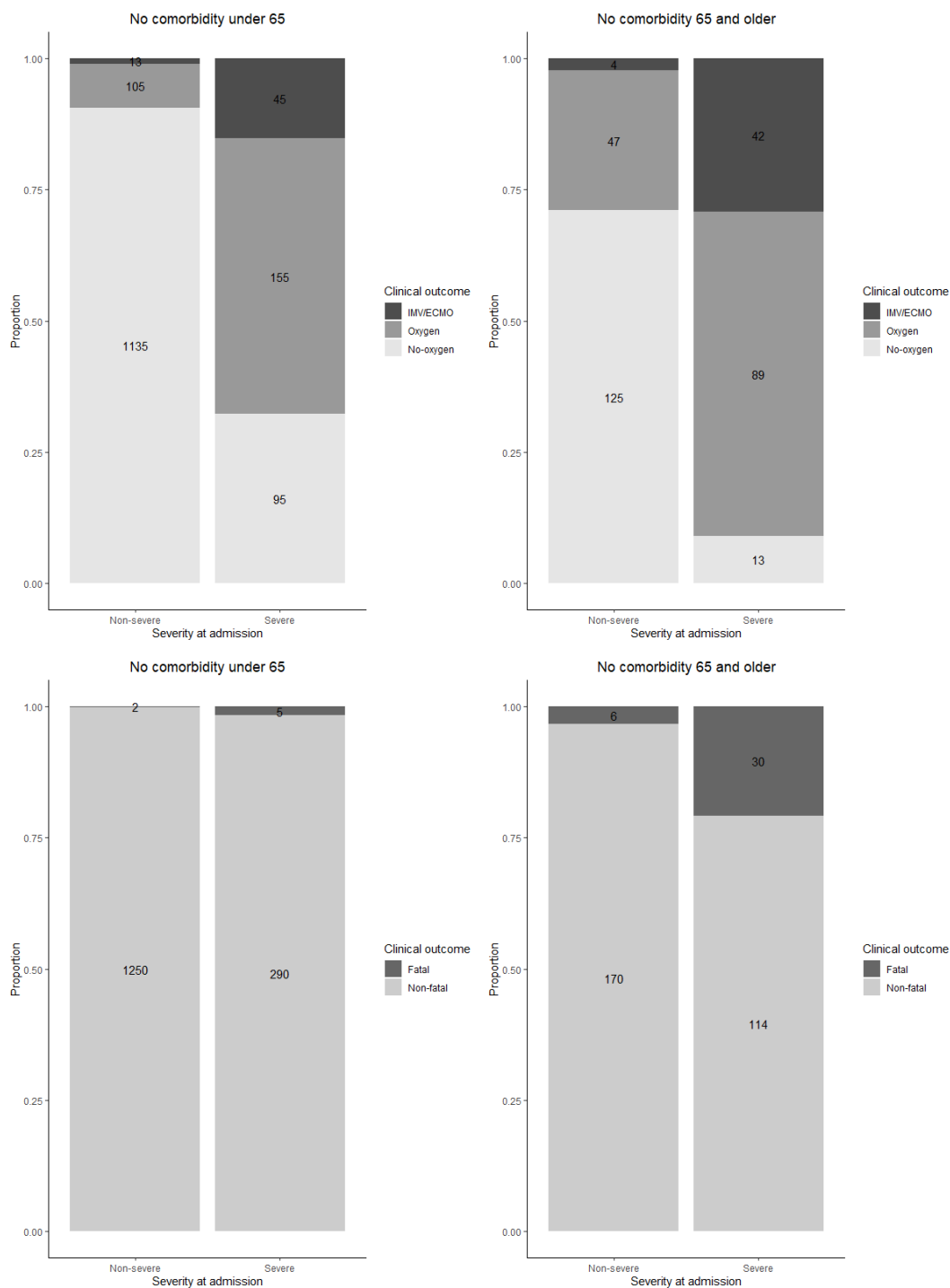
Top bars represent non-severe cases at admission and bottom bars represent severe cases at admission. Each group of cases was divided based on the presence of comorbidities. Dark gray represents fatal cases while light gray represents non-fatal cases.



Supplementary Figure 1. Distribution of worst severity by age group



Supplementary Figure 2. Distribution of fatality by age group



Supplementary Figure 3. (a) Worst severity of cases aged <65 and ≥65 with no comorbidities

(b) Fatality in cases aged <65 and ≥65 with no comorbidities