

1 **Full title: Exploring the causal effect of maternal pregnancy adiposity on offspring**

2 **adiposity: Mendelian randomization using polygenic risk scores**

3 **Short title: Exploring the causal effect of maternal pregnancy adiposity on offspring**

4 **adiposity**

5 Tom A Bond<sup>1,2,3,4,5,\*</sup>, Rebecca C Richmond<sup>4,5</sup>, Ville Karhunen<sup>1,6,7</sup>, Gabriel Cuellar-Partida<sup>3,8</sup>,

6 Maria Carolina Borges<sup>4,5</sup>, Verena Zuber<sup>1,9</sup>, Alexsander Couto Alves<sup>1,10</sup>, Dan Mason<sup>11</sup>, Tiffany

7 C Yang<sup>11</sup>, Marc J Gunter<sup>12</sup>, Abbas Dehghan<sup>1,2</sup>, Ioanna Tzoulaki<sup>1,2,13</sup>, Sylvain Sebert<sup>6</sup>, David M

8 Evans<sup>3,4,14</sup>, Alex M Lewin<sup>1,15</sup>, Paul F O'Reilly<sup>16</sup>, Deborah A Lawlor<sup>4,5,§</sup>, Marjo-Riitta Järvelin<sup>1,2,6,17,18,§</sup>

9 <sup>1</sup>Department of Epidemiology and Biostatistics, Imperial College London, London, UK.

10 <sup>2</sup>MRC-PHE Centre for Environment and Health, School of Public Health, Imperial College  
11 London, London, UK.

12 <sup>3</sup>The University of Queensland Diamantina Institute, The University of Queensland,  
13 Brisbane, Australia.

14 <sup>4</sup>MRC Integrative Epidemiology Unit at the University of Bristol, Bristol, UK.

15 <sup>5</sup>Population Health Sciences, Bristol Medical School, University of Bristol, Bristol, UK.

16 <sup>6</sup>Center for Life-course Health Research, Faculty of Medicine, University of Oulu, Oulu,  
17 Finland.

18 <sup>7</sup>Research Unit of Mathematical Sciences, University of Oulu, Oulu, Finland.

19 <sup>8</sup>23andMe, Inc., Sunnyvale, CA, USA.

20 <sup>9</sup>MRC Biostatistics Unit, School of Clinical Medicine, University of Cambridge, Cambridge,  
21 UK.

22 <sup>10</sup>School of Biosciences and Medicine, Faculty of Health and Medical Sciences, University of  
23 Surrey, Guildford, UK.

24 <sup>11</sup>Born in Bradford, Bradford Institute for Health Research, Bradford Teaching Hospitals NHS  
25 Foundation Trust, Bradford, UK.

26 <sup>12</sup>Section of Nutrition and Metabolism, IARC, Lyon, France.

27 <sup>13</sup>Department of Hygiene and Epidemiology, University of Ioannina Medical School, Ioannina,

28 Greece

29 <sup>14</sup>Institute for Molecular Bioscience, University of Queensland, Brisbane, Australia.

30 <sup>15</sup>Department of Medical Statistics, London School of Hygiene and Tropical Medicine,

31 London, UK.

32 <sup>16</sup>Genetics and Genomic Sciences, Icahn School of Medicine at Mount Sinai, New York,

33 USA.

34 <sup>17</sup>Unit of Primary Care, Oulu University Hospital, Oulu, Finland.

35 <sup>18</sup>Department of Life Sciences, College of Health and Life Sciences, Brunel University

36 London, London, UK.

37 \*Corresponding author: tom.bond@bristol.ac.uk

38 <sup>§</sup>These authors contributed equally to this work

39

40 **Abstract**

41 Background

42 Greater maternal adiposity before or during pregnancy is associated with greater offspring  
43 adiposity throughout childhood, but the extent to which this is due to causal intrauterine or  
44 periconceptual mechanisms remains unclear. Here we use Mendelian Randomization  
45 (MR) with polygenic risk scores (PRS) to investigate whether associations between maternal  
46 pre-/early pregnancy body mass index (BMI) and offspring adiposity from birth to  
47 adolescence are causal.

48 Methods

49 We undertook confounder adjusted multivariable (MV) regression and MR using mother-  
50 offspring pairs from two UK cohorts: Avon Longitudinal Study of Parents and Children  
51 (ALSPAC) and Born in Bradford (BiB). In ALSPAC and BiB the outcomes were birthweight  
52 (BW;  $N = 9339$ ) and BMI at age 1 and 4 years ( $N = 8659$  to  $7575$ ). In ALSPAC only we  
53 investigated BMI at 10 and 15 years ( $N = 4476$  to  $4112$ ) and dual-energy X-ray  
54 absorptiometry (DXA) determined fat mass index (FMI) from age 10–18 years ( $N = 2659$  to  
55  $3855$ ). We compared MR results from several PRS, calculated from maternal non-  
56 transmitted alleles at between 29 and 80,939 single nucleotide polymorphisms (SNPs).

57 Results

58 MV and MR consistently showed a positive association between maternal BMI and BW,  
59 supporting a moderate causal effect. For adiposity at most older ages, although MV  
60 estimates indicated a strong positive association, MR estimates did not support a causal  
61 effect. For the PRS with few SNPs, MR estimates were statistically consistent with the null,  
62 but had wide confidence intervals so were often also statistically consistent with the MV  
63 estimates. In contrast, the largest PRS yielded MR estimates with narrower confidence  
64 intervals, providing strong evidence that the true causal effect on adolescent adiposity is  
65 smaller than the MV estimates ( $P_{\text{difference}} = 0.001$  for 15 year BMI). This suggests that the MV

66 estimates are affected by residual confounding, therefore do not provide an accurate  
67 indication of the causal effect size.

## 68 Conclusions

69 Our results suggest that higher maternal pre-/early-pregnancy BMI is not a key driver of  
70 higher adiposity in the next generation. Thus, they support interventions that target the whole  
71 population for reducing overweight and obesity, rather than a specific focus on women of  
72 reproductive age.

## 73 **Keywords**

74 Obesity, BMI, pregnancy, child, maternal, offspring, DOHaD, Mendelian randomization,  
75 ALSPAC, Born in Bradford

## 76 **Background**

77 It has been hypothesised that prenatal exposure to greater maternal adiposity during or prior  
78 to pregnancy causes greater adiposity in the offspring throughout life, via intrauterine effects  
79 or periconceptual mechanisms (for example effects on the oocyte) (1-4). There are well  
80 replicated observational associations between maternal body mass index (BMI) before or  
81 during pregnancy and offspring adiposity and cardiometabolic outcomes in childhood,  
82 adolescence and adulthood (5-8). Furthermore, evidence from animal experiments suggests  
83 that such associations are plausibly due to causal biological effects in the intrauterine period  
84 (9, 10). If true, this could have important implications for obesity prevention policy, because  
85 interventions to reduce maternal obesity before pregnancy might reduce offspring obesity  
86 risk in later life (1, 2, 6).

87 Triangulated epidemiological evidence from different study designs (11) suggests that  
88 associations between maternal BMI and offspring childhood/adolescent adiposity may *not*  
89 reflect a causal effect. For example, negative paternal exposure control studies (12-18) and  
90 studies examining associations within sibling groups (19, 20) suggest that confounding by

91 genetic and/or environmental factors shared within families may be an important explanation  
92 for the associations. In addition, two Mendelian randomization (MR) (21, 22) studies, which  
93 used genetic variants as instrumental variables (IVs) for maternal BMI, provided no strong  
94 evidence for a causal effect (14, 23). However, in order to avoid bias due to genetic  
95 inheritance the primary analysis in the most recent MR study (23) was adjusted for an  
96 offspring weighted allele score, and simulations suggest that the use of a *weighted* allele  
97 score may not be the optimal approach to avoid bias (Personal communication, Wang G,  
98 Warrington N, Evans DM, 2020). In addition, both previous studies (14, 23) were unable to  
99 adjust for paternal genetic variants, which may be necessary to avoid collider bias (24).  
100 Furthermore, the causal estimates from previous MR studies were imprecise (14, 23, 24).  
101 For example, in the largest study ( $N = 6057$ ) a one standard deviation (SD) higher maternal  
102 BMI was associated with a 0.05 SD increase in mean offspring BMI at age 7, but the 95%  
103 confidence interval was consistent with a 0.11 SD reduction or a 0.21 SD increase (23). If a  
104 positive causal effect is present this could have important public health implications, because  
105 it could lead to an accelerating intergenerational cycle of obesity that is difficult to break (1,  
106 25). It is therefore important to conduct further MR investigations with improved methods, in  
107 order to obtain more precise estimates that are not subject to the aforementioned biases.

108 We aimed to use maternal non-transmitted allele polygenic risk scores (PRS) as IVs in a  
109 one-sample MR design, to explore the causal effect of maternal BMI on offspring adiposity  
110 from birth to adolescence, and to compare those results with confounder adjusted  
111 multivariable (MV) regression estimates. Because we used only maternal alleles that were  
112 not inherited by the offspring, we did not need to adjust for offspring or paternal genotype  
113 and thereby avoided biases that may have affected previous studies. We included  
114 thousands of genetic variants (hereafter referred to as single nucleotide polymorphisms  
115 [SNPs]) in the PRS, affording increased precision over previous MR studies which used only  
116 genome wide significant (GWS;  $P < 5e-8$ ) SNPs (14, 23). Based on previous MR studies (23,

117 26, 27) we hypothesised that greater maternal BMI would cause increased offspring birth  
118 weight (BW), but that the causal effect would attenuate over childhood and adolescence.

## 119 **Methods**

### 120 Study design

121 We have followed the MR-STROBE reporting guidelines in this paper (28). We conducted  
122 one-sample MR and compared these results with confounder adjusted multivariable (MV)  
123 regression analyses. We analysed data from two British population based prospective birth  
124 cohorts: the Avon Longitudinal Study of Parents and Children (ALSPAC) and Born in  
125 Bradford (BiB). These cohorts are described in **Additional file 1: Supplementary**  
126 **information S1** (14, 22-24, 29-75) and details of the study methodology have been reported  
127 previously (29-31).

### 128 Selection of participants

129 Full details of sample selection for each cohort are given in **Additional file 1:**  
130 **Supplementary information S2**, and selection flow charts are presented in **Additional file**  
131 **1: Supplementary information S3**. We included live-born singletons with non-missing data  
132 for the variables required for MR analyses, and excluded one offspring from any sibling  
133 groups present (chosen at random in ALSPAC or to maximise the sample size with data  
134 available in BiB). As the effects we were exploring may differ by ethnicity (32) we limited  
135 analyses to two ethnic groups: White European and South Asian, which comprised 40% and  
136 51% of the sample with offspring genotype data available respectively. There were very few  
137 participants from other ethnic groups in either cohort. ALSPAC (93% White European)  
138 contributed only to the analyses in White Europeans and we meta-analysed these results  
139 with those from models fitted separately for BiB South Asians and BiB White Europeans.  
140 Derivation of ethnicity variables is described in **Additional file 1: Supplementary**  
141 **information S4**. The overall sample size for MR analyses ranged from 2659–5085 for  
142 ALSPAC, 1566–2262 for BiB South Asians and 1339–1992 for BiB White Europeans. The

143 sample sizes for confounder adjusted MV estimates were somewhat smaller due to missing  
144 confounder data (1884–3265 for ALSPAC, 325–449 for BiB South Asians and 442–604 for  
145 BiB White Europeans). To enable comparison between the confounder adjusted MV  
146 estimates from models that adjusted for different covariates, we fitted all the models for each  
147 outcome using an identical sample with non-missing data for all relevant variables.

#### 148 Parental anthropometric variables

149 In ALSPAC, maternal pre-pregnancy weight and height were retrospectively reported by the  
150 women during pregnancy (at a mean gestational age of 24.7 weeks [SD 6.3]) or postnatally  
151 for 11.2% of mothers (at a mean of 22.0 weeks after birth [SD 6.7]). The reported weights  
152 correlated highly with weight recorded at the first antenatal clinic (Pearson correlation  
153 coefficient = 0.96). Paternal height and weight were reported by the fathers during their  
154 partner's pregnancy (or postnatally for a minority of fathers). In BiB, early pregnancy BMI  
155 was calculated from height reported by the mothers at recruitment (26–28 weeks gestation)  
156 and weight extracted from the first antenatal clinic records (median 12 weeks gestation).  
157 Paternal height and weight were reported by the fathers at recruitment, which for the majority  
158 of fathers was at the time of their partner's pregnancy.

#### 159 Offspring anthropometric variables

160 Offspring outcomes included BW and BMI at age 1 and 4 years (in ALSPAC and BiB), BMI  
161 at age 10 and 15 years (ALSPAC only) and fat mass index (FMI) at age 10, 12, 14, 16 and  
162 18 years (ALSPAC only). The assessment of these outcomes is described in **Additional file**  
163 **1: Supplementary information S5** and **Additional file 1: Supplementary information S6**,  
164 and included extraction of measurements from routine data sources (birth  
165 records/notifications, child health records, primary care records and school nurse records),  
166 clinical measurement by research staff or UK Government National Child Measurement  
167 Programme (NCMP) staff, and maternal/offspring questionnaire responses. In ALSPAC, we

168 calculated FMI as fat mass (kg) / height (m)<sup>2</sup> using fat mass measured by whole body dual-  
169 energy X-ray absorptiometry (DXA) (**Additional file 1: Supplementary information S5**).

#### 170 Anthropometric variable standardisation

171 In each of the three samples (ALSPAC, BiB White Europeans and BiB South Asians) we  
172 internally standardised exposure and outcome variables to give measures in standard  
173 deviation (SD) units. We standardised maternal BMI by maternal age (at delivery), in one  
174 year age categories. We standardised offspring BW by sex, and offspring BMI and FMI by  
175 sex and age (in one month categories).

#### 176 Confounder adjusted multivariable regression

177 We considered the following variables to be potential confounders: maternal age (which was  
178 adjusted for in the standardised exposure by calculating z-scores within maternal age  
179 strata), parity, maternal smoking during pregnancy, parental occupation, maternal  
180 educational attainment, paternal educational attainment and paternal BMI. Standard  
181 protocols for assessing these variables were used in each cohort, and full details are  
182 provided in **Additional file 1: Supplementary information S7**. We fitted three MV  
183 regression models: in model one we adjusted for maternal age, offspring age and offspring  
184 sex, in model two we additionally adjusted for the potential confounders listed above except  
185 for paternal BMI, and in model three (which was the main multivariable model of interest and  
186 is presented in **Results**) we additionally adjusted for paternal BMI. We took a complete case  
187 approach and excluded individuals with any missing data, therefore models one to three  
188 were fitted using identical samples. In sensitivity analyses we adjusted all models for  
189 gestational age at delivery, and for 20 genetic principal components (PCs) which we  
190 calculated from genome-wide SNPs separately for each of the three samples (**Additional**  
191 **file 1: Supplementary information S8**), in order to adjust for ancestry. In BiB we had to  
192 exclude a large number of individuals from the main MV models due to missing paternal BMI  
193 data. We therefore refitted models one and two without first excluding individuals with



194 missing paternal BMI data (i.e. on larger samples), in order to explore potential selection  
195 bias.

#### 196 Genotyping, quality control and imputation

197 Mothers, offspring and (in ALSPAC only) fathers were genotyped using genome-wide arrays,  
198 followed by standard quality control (QC) measures (**Additional file 1: Supplementary**  
199 **information S9**). Array genotypes were then imputed to the Haplotype Reference  
200 Consortium (HRC), 1000 Genomes or UK10K reference panels (46-48) (**Additional file 1:**  
201 **Supplementary information S9**). In order to maximize the sample size we did not exclude  
202 cryptically related individuals for the primary analyses. As a sensitivity analysis we removed  
203 cryptic relatedness at a level corresponding to first cousins (dropping 6.7%, 13.5% and 9.1%  
204 of individuals in ALSPAC, BiB South Asians and BiB White Europeans respectively) by  
205 applying a KING (48) kinship coefficient threshold of 0.044 to the offspring using the PLINK  
206 software package version 2.00 (49, 50).

#### 207 Inference of maternal non-transmitted alleles

208 Our MR analyses used maternal PRS as IVs for maternal pre-pregnancy BMI. MR assumes  
209 that the IV is only associated with the outcome via its association with the exposure  
210 (**Additional file 1: Supplementary information S10**). For this to be true, the maternal PRS  
211 must be independent of the offspring's genotype, but due to genetic inheritance this is not  
212 the case for PRS calculated in the usual way from all maternal alleles. We therefore  
213 calculated maternal PRS from only those maternal alleles that were not inherited by the  
214 offspring (maternal non-transmitted alleles (34)). After conversion of imputed genotypes to  
215 hard calls (integer valued allele dosages) and application of QC filters (**Additional file 1:**  
216 **Supplementary information S9**), we phased offspring imputed SNPs (for the sample of  
217 genotyped mother-offspring duos) using the duoHMM method implemented in the SHAPEIT  
218 v2 (r904) software package, with a window size of 5 Mb as per the authors  
219 recommendations for parent-offspring duos (76). This yielded maternal transmitted alleles

220 (i.e. maternal alleles that were inherited by the offspring), which we used (along with the  
221 maternal genotypes) to infer the maternal non-transmitted alleles, from which we calculated  
222 maternal PRS, having first estimated SNP weights using maternal genotypes (see below).

### 223 Polygenic risk score (PRS) calculation

224 Previous MR studies followed the widely used practice of using up to 97 GWS ( $P < 5e-8$ )  
225 SNPs, but for polygenic traits such as BMI it is known that substantially improved phenotypic  
226 prediction can be achieved by including many more SNPs in the genetic risk score (i.e. more  
227 weakly associated SNPs that individually are not GWS) (61, 77-79). In order to maximise  
228 statistical power we used thousands of genome-wide SNPs to calculate a BMI PRS, as a  
229 weighted sum of BMI-increasing maternal non-transmitted alleles at SNPs across the  
230 genome. We tested four PRS methods (clumping and thresholding (80), LDpred (52),  
231 lassosum (53, 81) and the BOLT-LMM linear predictor (54)) (**Additional file 1:**

232 **Supplementary information S11** provides further information for each of these). Of these  
233 four methods, lassosum explained the highest proportion of variance ( $R^2$ ) for maternal BMI  
234 in both ALSPAC and BiB (which we refer to as the target datasets), therefore we used the  
235 lassosum PRS for subsequent MR analyses. Lassosum requires summary statistics from a  
236 genome wide association study (GWAS), which we refer to as the base dataset. We  
237 conducted a GWAS in the UK Biobank (UKB), a prospective cohort of 502,628 volunteers  
238 (with 5% response rate of those invited), recruited from across the UK at age 40–69 years  
239 between 2006 and 2010 (58, 82) (**Additional file 1: Supplementary information S11**). In  
240 order to avoid overfitting due to overlap between the base and target samples we excluded  
241 attendees of the Bristol (where ALSPAC participants would have attended) or Leeds (where  
242 Born in Bradford participants would have attended) UKB assessment centres. We meta-  
243 analysed the summary statistics from the UKB GWAS with a published BMI GWAS from the  
244 GIANT consortium (60, 83), giving a total base sample size of up to 756,048. We applied the  
245 lassosum algorithm to the meta-analysed base dataset; lassosum uses penalised regression  
246 to carry out shrinkage and selection on the base GWAS SNP effects and accounts for LD

247 information from a reference panel. We used the ALSPAC or BiB datasets as the reference  
248 panels as per the authors' recommendations) (53). PLINK was used to calculate the PRS for  
249 ALSPAC and BiB individuals using the lassosum SNP weights for around 80,000 SNPs (see  
250 **Table 2** for the exact number of SNPs for each cohort). We also calculated three PRS from  
251 fewer SNPs, to be used in sensitivity analyses to explore potential pleiotropic effects (we  
252 would expect that the risk of pleiotropic bias might decrease as fewer SNPs are included in  
253 the IV; see below). These PRS used (i) around 30 GWS SNPs identified in a 2010 BMI  
254 GWAS (67), (ii) around 90 GWS SNPs identified in a 2015 BMI GWAS (60), and (iii) around  
255 500 GWS SNPs identified as primary signals in a 2018 BMI GWAS (61). Full details of these  
256 analyses, including the exact number of SNPs used to calculate each PRS (which varied  
257 between samples) are given in **Additional file 1: Supplementary information S12**.

#### 258 Mendelian randomization

259 For the primary MR analyses we used the lassosum non-transmitted allele BMI PRS as an  
260 IV for maternal BMI and fitted models using the two-stage least squares (TSLS) method (22)  
261 (i.e. one sample MR). **Additional file 1: Supplementary information S10** shows our MR  
262 analyses diagrammatically. We included 20 genetic PCs as covariates in order to adjust for  
263 population stratification. We tested for a difference between the most extensively confounder  
264 adjusted MV estimates (model three) and MR estimates using a z-test (**Additional file 1:**  
265 **Supplementary information S13**), and used a bootstrapping procedure to estimate the  
266 covariance between MV and MR estimates in order to calculate the z-statistic. Evidence for  
267 a difference between the two could reflect residual confounding in the MV analyses or  
268 violation of one or more of the MR assumptions.

#### 269 Meta-analysis

270 We examined the point estimates,  $I^2$  statistics and Cochran's Q test P-values for the MV and  
271 MR associations and found little evidence for heterogeneity between ALSPAC, BiB South  
272 Asians and BiB White Europeans (**Additional file 1: Supplementary information S14**). We

273 therefore meta-analysed estimates from the three samples using a fixed effects model.  
274 Results were similar when we instead used a random effects model. For the meta-analyses  
275 we used the ratio estimator (calculated as the meta-analysed PRS-outcome regression  
276 coefficient  $\hat{\beta}_{ZY}$  divided by the meta-analysed PRS-exposure regression coefficient  $\hat{\beta}_{ZX}$ ; in the  
277 present study both coefficients were estimated in the same sample) which gives equivalent  
278 results to TSLS (84). We calculated the standard errors for the pooled MR estimates using a  
279 Taylor series approximation (70).

### 280 Checking MR assumptions

281 We checked the assumptions made by MR analyses (**Additional file 1: Supplementary**  
282 **information S10**); if these assumptions are met then our MR estimates can be interpreted  
283 as causal effect estimates (22). We first assessed whether the PRS were associated with  
284 maternal BMI using the  $R^2$  and  $F$ -statistics. Next, we explored whether the PRS-outcome  
285 associations were confounded by ancestry (population stratification) using a linear mixed  
286 model (LMM). LMMs have been widely used in GWAS to adjust for population stratification  
287 and cryptic relatedness (71). We fitted models for the numerator and denominator of the  
288 ratio estimator separately, using the *--reml-est-fix* command in the GCTA software package  
289 (version 1.91.7beta) (43). Further details of the LMM approach are given in **Additional file**  
290 **1: Supplementary information S15**. Finally, we conducted several analyses to explore  
291 whether the maternal PRS influences offspring adiposity via mechanisms other than  
292 intrauterine or periconceptual exposure to increased maternal BMI (horizontal pleiotropy).  
293 We first tested for associations of the PRS with other potential risk factors for the offspring  
294 outcomes (85). We would expect that the risk of pleiotropic bias might decrease as fewer  
295 SNPs are included in the IV. We therefore repeated MR analyses with IVs calculated from a  
296 single BMI-associated SNP (rs9939609 at the *FTO* locus, the locus at which there is  
297 currently the strongest evidence for association with BMI (61)), as well as the three PRS  
298 calculated from only strongly BMI-associated (GWS) SNPs, as described above.  
299 Furthermore, most of the SNPs included in the lassosum BMI PRS had small effect sizes,

300 and the consequences of this for the extent of horizontal pleiotropic effects are unclear (72),  
301 so we explored how MR estimates varied with varying SNP effect size distributions. We also  
302 tested for evidence of between-SNP MR estimate heterogeneity (Cochran's Q test) and used  
303 MR Egger regression (74) to investigate horizontal pleiotropy, for the analyses based on  
304 GWS SNPs. Finally, to investigate collider bias and bias due to assortative mating we  
305 examined the association between the maternal and paternal lassosum BMI PRS, in the  
306 subset of ALSPAC participants with paternal genotype data available ( $N = 1325$ ).

### 307 Other sensitivity analyses

308 We explored departure from linearity of the MV and MR associations by examining  
309 augmented partial residual plots with overlaid linear regression lines and nonparametric  
310 loess smoothers (86). The residuals from several models involving adolescent BMI and FMI  
311 variables were somewhat positively skewed so we repeated MV and MR analyses using the  
312 natural log of the relevant variables. We examined whether results differed for BW, BMI and  
313 ponderal index (weight [kg] / length [m]<sup>3</sup>) at birth (in ALSPAC only as birth length was not  
314 available in BiB). Finally, we tested for interaction by offspring sex for the MV and MR  
315 models. We carried out statistical analyses in R version 3.5.1 (87), and Stata version 13.1  
316 (StataCorp, College Station, TX, USA).

## 317 **Results**

### 318 Participant characteristics

319 **Table 1** shows the participant characteristics. The prevalence of maternal obesity (maternal  
320 BMI  $\geq 30$ ) was 5.5% (95% confidence interval [CI]: 4.9%, 6.1%) in ALSPAC and markedly  
321 higher in BiB South Asians (20.5% [95% CI: 18.9%, 22.2%]) and BiB White Europeans  
322 (26.0% [95% CI: 24.1%, 28.0%]). The samples for our analyses were smaller than those for  
323 the full cohorts at birth due to missing data, particularly for the MV associations. Despite this  
324 there were not large differences in the distributions of BW, maternal BMI or offspring sex  
325 between the baseline samples and those from which we calculated the MV estimates

326 **(Additional file 1: Supplementary information S16)**. Furthermore, when we fitted MV  
327 models one and two on a larger sample (retaining individuals with missing paternal BMI)  
328 there were not large differences in the primary MV results **(Additional file 1:**  
329 **Supplementary information S17)**.

330 **Table 1:** Characteristics of the mothers and offspring in ALSPAC and BiB

	ALSPAC				BiB (WE)				BiB (SA)			
	Mean	SD	N	Female offspring (%)	Mean	SD	N	Female offspring (%)	Mean	SD	N	Female offspring (%)
Maternal BMI (kg/m <sup>2</sup> )	23.0	3.8			26.9	6.0			25.8	5.5		
Maternal age (years)	29.3	4.5			27.4	6.0			28.8	5.0		
Birth weight (z score)	0.10	0.95	5085	50.5	-0.05	0.97	1992	47.9	-0.56	0.92	2262	47.9
Gestational age (weeks)	39.6	1.7			39.4	1.6			39.1	1.5		
1yr weight for length percentile*	0.64	0.27	4838	50.6	0.61	0.28	1798	47.8	0.48	0.30	2023	48.1
Age at measurement (years)	0.9	0.2			0.8	0.3			0.8	0.3		
4yr BMI (z score)	0.46	1.05	4670	50.2	0.50	0.97	1339	48.6	0.10	1.21	1566	48.5
Age at measurement (years)	4.1	0.7			4.5	0.7			4.5	0.7		
10yr BMI (z score)	0.26	1.12	4476	51.3								
Age at measurement (years)	9.9	0.5										
15yr BMI (z score)	0.30	1.11	4112	51.7								
Age at measurement (years)	15.0	0.8										

331 **SA:** South Asians, **WE:** White Europeans, **SD:** standard deviation, **z score:** sex- and gestational age-  
332 adjusted standard deviation score (UK-WHO Growth Reference (88)), \*Sex-adjusted percentile  
333 calculated using the WHO Child Growth Standards (89). All z scores and percentiles were calculated  
334 via the *zanthro* Stata package (90). Data for absolute values (as opposed to z scores) are presented  
335 in **Additional file 1: Supplementary information S18**

336

337 Associations of genetic IVs with maternal BMI and offspring genotype

338 As we included more SNPs in the IV the  $R^2$  for maternal BMI increased markedly, from <1%  
339 for the *FTO* IV to ~3–7% for the lassosum IV (**Table 2**). First-stage *F*-statistics were >75 for  
340 all lassosum MR models (**Additional file 1: Supplementary information S19**). The  
341 lassosum maternal non-transmitted allele BMI PRS was not correlated with the offspring's  
342 PRS (results available from the authors on request).

343 Associations of maternal BMI with confounders/outcome risk factors

344 There was strong evidence in all three samples for associations between maternal BMI and  
345 several other potential risk factors for the offspring outcomes, including parental occupation,  
346 educational attainment, maternal parity and paternal BMI (results are summarised in **Table**  
347 **2**, and full regression results including the direction of associations are given in **Additional**  
348 **file 1: Supplementary information S20–S23**).

349 Associations of maternal BMI PRS with confounders/outcome risk factors

350 Genetic IVs based on fewer SNPs (i.e. <100 SNPs) were generally not associated with the  
 351 outcome risk factors. In ALSPAC however there was strong evidence for association of the  
 352 lassosum IV (based on 80,939 SNPs) with parental occupation, parental educational  
 353 attainment, parental age, maternal smoking and paternal BMI. These associations were  
 354 mostly present for BiB White Europeans but absent for BiB South Asians.

355 **Table 2:** Associations of maternal BMI with outcome risk factors, and of the genetic IVs (maternal  
 356 non-transmitted alleles) with maternal BMI and outcome risk factors

	N SNPs	$R^2$ maternal BMI	Correlation with outcome risk factors <sup>a</sup>							
			Parental occupation	Maternal education	Paternal education	Maternal smoking	Parity	Paternal BMI	Maternal age	Paternal age
<b>ALSPAC</b>										
N		5157	4807	4826	4572	4891	5042	3766	5157	3593
Maternal BMI <sup>b</sup>			0.11***	-0.12***	-0.11***	-0.01	0.06**	0.16***	0.00 <sup>c</sup>	-0.01 <sup>c</sup>
Genetic IV										
<i>FTO</i>	1	0.36%	0.03*	-0.01	-0.01	0.00	0.02	-0.01	-0.01	0.00
Speliotes	31	0.89%	0.02	0.00	-0.03*	-0.01	0.02	0.01	0.00	0.01
Locke	87	1.02%	0.03	-0.01	-0.04*	-0.01	0.03*	0.01	0.00	0.00
Yengo	497	2.37%	0.04*	-0.04*	-0.05**	0.02	0.03	0.01	-0.02	-0.01
Lassosum	80939	6.61%	0.08***	-0.07***	-0.08***	0.07***	0.02	0.03*	-0.08***	-0.06**
<b>BiB (SA)</b>										
N		2267	1689	2259	2258	2262	2215	475	2267	583
Maternal BMI <sup>b</sup>			-0.10**	-0.08**	-0.03	0.01	0.15***	0.12*	-0.02 <sup>c</sup>	0.02 <sup>c</sup>
Genetic IV										
<i>FTO</i>	1	0.77%	-0.01	-0.01	0.00	-0.03	0.00	0.00	0.02	0.06
Speliotes	29	1.71%	-0.01	0.01	0.01	-0.04	0.00	-0.01	0.00	-0.05
Locke	82	1.33%	-0.04	0.02	0.03	-0.05*	-0.01	-0.06	0.00	0.02
Yengo	446	1.64%	-0.04	-0.04*	0.01	0.01	0.01	-0.03	-0.02	-0.03
Lassosum	79101	3.46%	-0.01	-0.02	-0.02	0.01	-0.02	-0.04	-0.04	-0.06
<b>BiB (WE)</b>										
N		2000	1587	2000	1999	1999	1951	639	2000	788
Maternal BMI <sup>b</sup>			-0.09**	-0.07*	0.01	0.01	0.11***	0.22***	0.00 <sup>c</sup>	0.04 <sup>c</sup>
Genetic IV										
<i>FTO</i>	1	0.56%	0.03	0.02	-0.01	0.00	0.00	0.03	0.00	-0.02
Speliotes	31	0.92%	0.05	0.01	0.03	-0.03	0.00	0.02	0.00	-0.01
Locke	86	1.16%	0.03	0.00	0.04	-0.01	-0.01	0.04	-0.02	-0.02
Yengo	453	1.78%	-0.01	0.00	0.05*	0.01	0.00	0.00	-0.03	0.00
Lassosum	79101	5.21%	-0.08*	-0.05*	0.04	0.07*	0.04	0.03	-0.07*	0.01

357

358 **a:** Pearson correlation coefficients are presented here to give an indication of the direction and  
 359 magnitude of associations; full regression results are presented in **Additional file 1: Supplementary**  
 360 **information S16–S19**, \*  $P < 0.05$ , \*\*  $P < 0.001$ , \*\*\*  $P < 1e-5$ , **b:** age-standardised z-scores for maternal  
 361 BMI, as per the primary analyses, **c:** maternal BMI is not correlated with maternal or paternal age  
 362 because it was age-standardised, **SA:** South Asians, **WE:** White Europeans,  $R^2$ : proportion of  
 363 maternal BMI variance explained by the IV (maternal non-transmitted allele scores), **FTO:** rs9939609  
 364 at the *FTO* locus, **Speliotes, Locke, Yengo:** PRS calculated from SNPs that reached genome wide



365 significance in the BMI GWAS with the indicated first author, **Lassosum**: PRS calculated by the  
366 lassosum method

### 367 Confounder adjusted MV regression

368 In confounder adjusted MV regression models maternal BMI was positively associated with  
369 all offspring outcomes (**Figure 1, Additional file 1: Supplementary information S24**; meta-  
370 analysis heterogeneity statistics are given in **Additional file 1: Supplementary information**  
371 **S14**). Estimates for the SD scale increase in offspring outcomes associated with a 1 SD  
372 higher age-adjusted maternal BMI ranged from 0.07 (95% CI: 0.04, 0.10) for 4 year BMI to  
373 0.32 (95% CI: 0.29, 0.36) for 15 year BMI, and MV estimates for 10–18 year FMI were  
374 similar to those for 15 year BMI. Adjustment for potential confounders had a negligible  
375 impact on the estimates, aside from a small attenuation on adjustment for paternal BMI for  
376 outcomes after birth. Results were similar when we refitted MV models one and two on  
377 larger samples without excluding individuals with missing paternal BMI data (**Additional file**  
378 **1: Supplementary information S17**). Additional adjustment for gestational age at birth or  
379 20 genetic PCs had a negligible effect (**Additional file 1: Supplementary information S25,**  
380 **S26**), and there was not a large difference when BMI or ponderal index at birth was  
381 substituted for BW in ALSPAC (**Additional file 1: Supplementary information S27**).

### 382 MR results

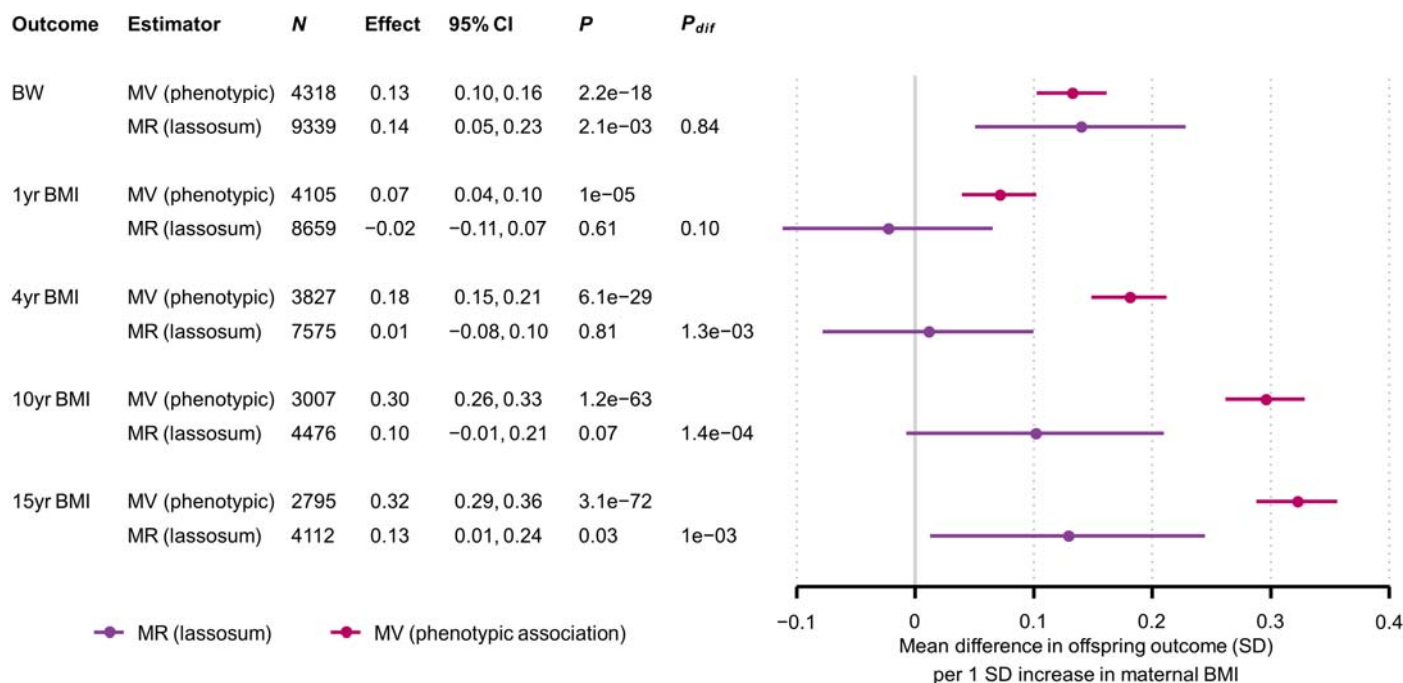
383 For BW the MR estimate for the lassosum PRS for all three samples meta-analysed was  
384 0.14 (0.05, 0.23), which was similar to the MV estimate;  $P_{\text{difference (MV vs. MR)}} = 0.84$ ) (**Figure 1**).  
385 The corresponding lassosum MR estimates for 1 year BMI and 4 year BMI were -0.02 (-0.11,  
386 0.07) and 0.01 (-0.08, 0.10) respectively, and there was moderate to strong evidence for an  
387 MR-MV difference ( $P_{\text{difference}} = 0.10$  and  $1.3e-3$  respectively). The MR estimates for 10 and 15  
388 year BMI in ALSPAC (0.10 [-0.01, 0.21] and 0.13 [0.01, 0.24] respectively) were also smaller  
389 than the MV estimates ( $P_{\text{difference}} = 1.4e-4$  and  $1.0e-3$  respectively). Results for adolescent  
390 FMI (**Figure 2**) were similar to those for adolescent BMI: MR estimates ranged between 0.09  
391 and 0.19, and there was strong evidence that the MR estimates were smaller than the MV

392 estimates, with  $P_{\text{difference}}$  ranging between 0.05 and  $4.7\text{e-}4$ ). We did not observe strong  
393 evidence for non-linearity or interaction by sex for either the MV or MR models (results  
394 available from the authors), and results were similar when we (i) substituted BMI or ponderal  
395 index at birth for BW (**Additional file 1: Supplementary information S28**), (ii) natural log  
396 transformed skewed variables (results available from the authors), (iii) removed cryptic  
397 relatedness from the sample (results available from the authors), and (iv) used linear mixed  
398 models to adjust for population structure (**Additional file 1: Supplementary information**  
399 **S29**). In linear regression models (as opposed to two-stage least squares regression) there  
400 was strong to moderate evidence that the lassosum maternal non-transmitted allele BMI  
401 PRS was associated with offspring BW and adolescent adiposity (**Additional file 1:**  
402 **Supplementary information S30, S31**).

403

404

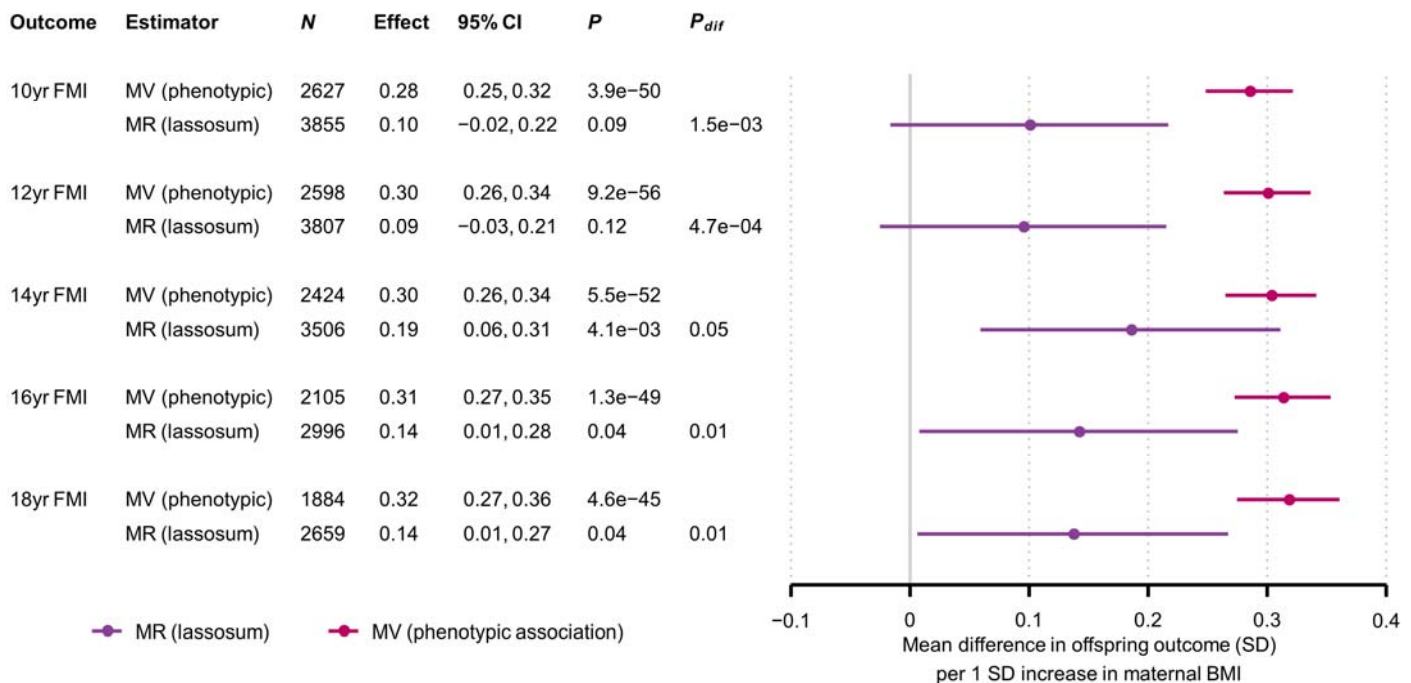
405 **Figure 1:** Mean difference in offspring BW and BMI (SD) per 1SD increase in maternal BMI, from MR  
 406 (lassosum) and confounder adjusted multivariable regression (MV) models



407 Confounder adjusted multivariable regression (MV) estimates are from model three (**Methods**). **N:**  
 408 Number of participants. The number of SNPs used for the MR analyses is provided separately by  
 409 cohort in **Table 1**. **P:** *P*-value for the null hypothesis that the effect equals zero,  $P_{dif}$ : *P*-value for the  
 410 null hypothesis that MR effect equals the MV effect.

411

412 **Figure 2:** Mean difference in offspring FMI (SD) per 1SD increase in maternal BMI, from MR  
 413 (lassosum) and confounder adjusted multivariable regression (MV) models



414 Confounder adjusted multivariable regression (MV) estimates are from model three (**Methods**). **N:**  
 415 Number of participants. The number of SNPs used for the MR analyses is provided separately by  
 416 cohort in **Table 1**. **P:**  $P$ -value for the null hypothesis that the effect equals zero,  $P_{dif}$ :  $P$ -value for the  
 417 null hypothesis that MR effect equals the MV effect.

418 MR estimates for IVs with fewer SNPs

419 When we replaced the lassosum PRS with alternative IVs calculated from fewer SNPs, our  
 420 MR estimates varied in a manner that was specific to the offspring outcome (**Figure 3**,  
 421 **Figure 4**). For BW, including fewer SNPs in the IV did not result in large differences in the  
 422 MR estimates, although the precision reduced markedly as we used fewer SNPs. For 1 and  
 423 4 year BMI, MR estimates increased as we used fewer SNPs, whereas for 10 year BMI they  
 424 largely remained stable and for 15 year BMI they decreased. The patterns for adolescent  
 425 FMI were similar to those for adolescent BMI. For outcomes apart from BW and 1yr BMI,  
 426 including more SNPs in the IV generally resulted in stronger evidence that MR estimates  
 427 differed from MV estimates (i.e. smaller  $P_{dif}$ ).

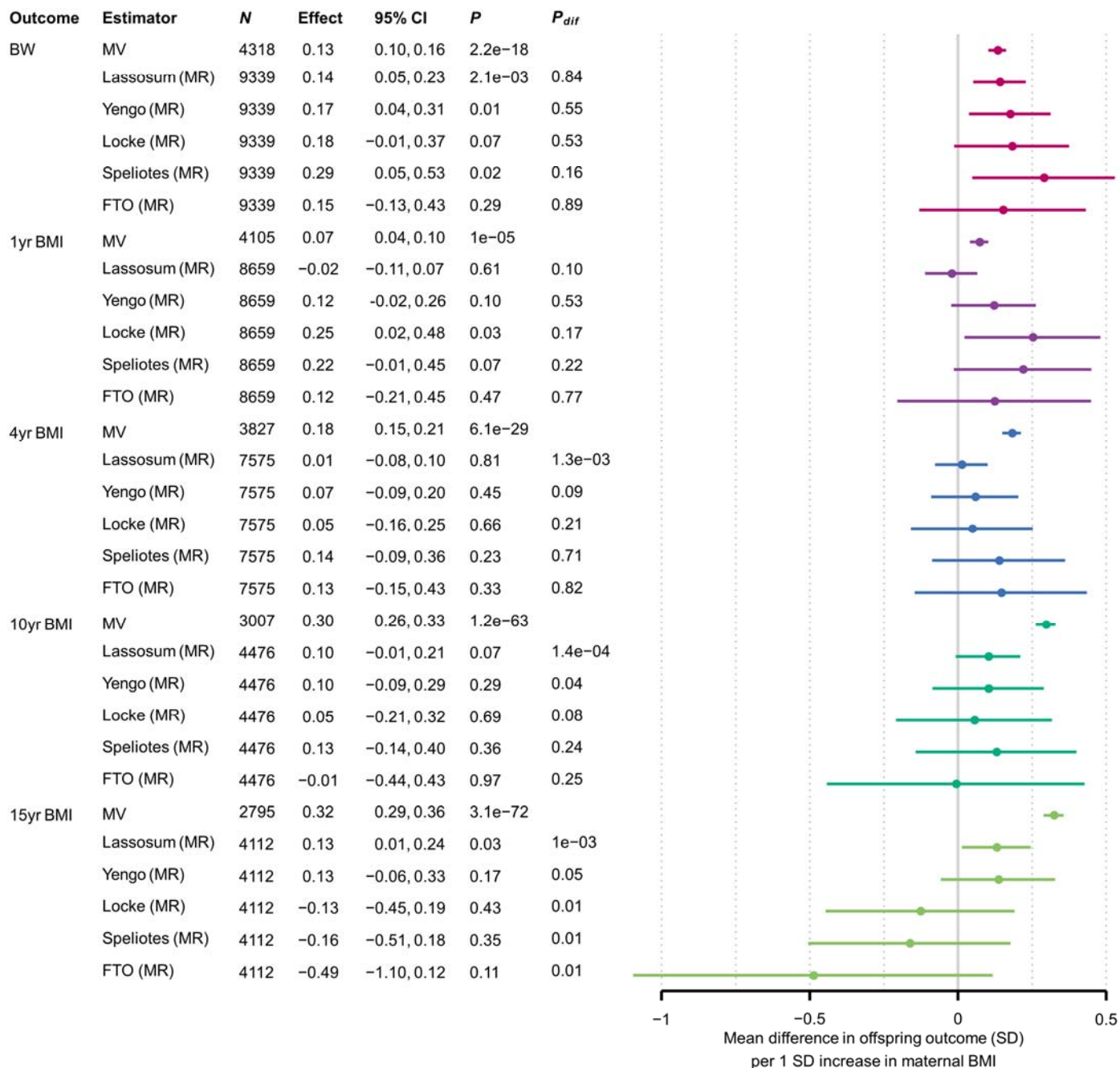
428 MR estimates for SNPs with differing effect size distributions, between-SNP heterogeneity  
 429 and MR Egger results

430 For the majority of outcomes (particularly in adolescence) there was moderate to strong  
431 statistical evidence that SNPs with smaller effect sizes gave larger (more positive) MR  
432 estimates ( $P = 4.0e-3, 2.6e-2, 1.8e-2$  and  $4.7e-4$  for 15yr BMI, 14yr FMI, 16yr FMI and 18yr  
433 FMI respectively), and this was not driven by weak instrument bias (**Additional file 1:  
434 Supplementary information S32**). When using only large-effect (GWS) SNPs, in general  
435 (and in light of the 40 statistical tests carried out) there was not strong statistical evidence for  
436 between-SNP MR estimate heterogeneity (all Cochran's Q test  $P$ -values  $\geq 0.017$ ), nor was  
437 there strong evidence that the MR-Egger intercept differed from zero (all MR-Egger intercept  
438  $P$ -values  $\geq 0.023$ ) (**Additional file 1: Supplementary information S33**).

439

440

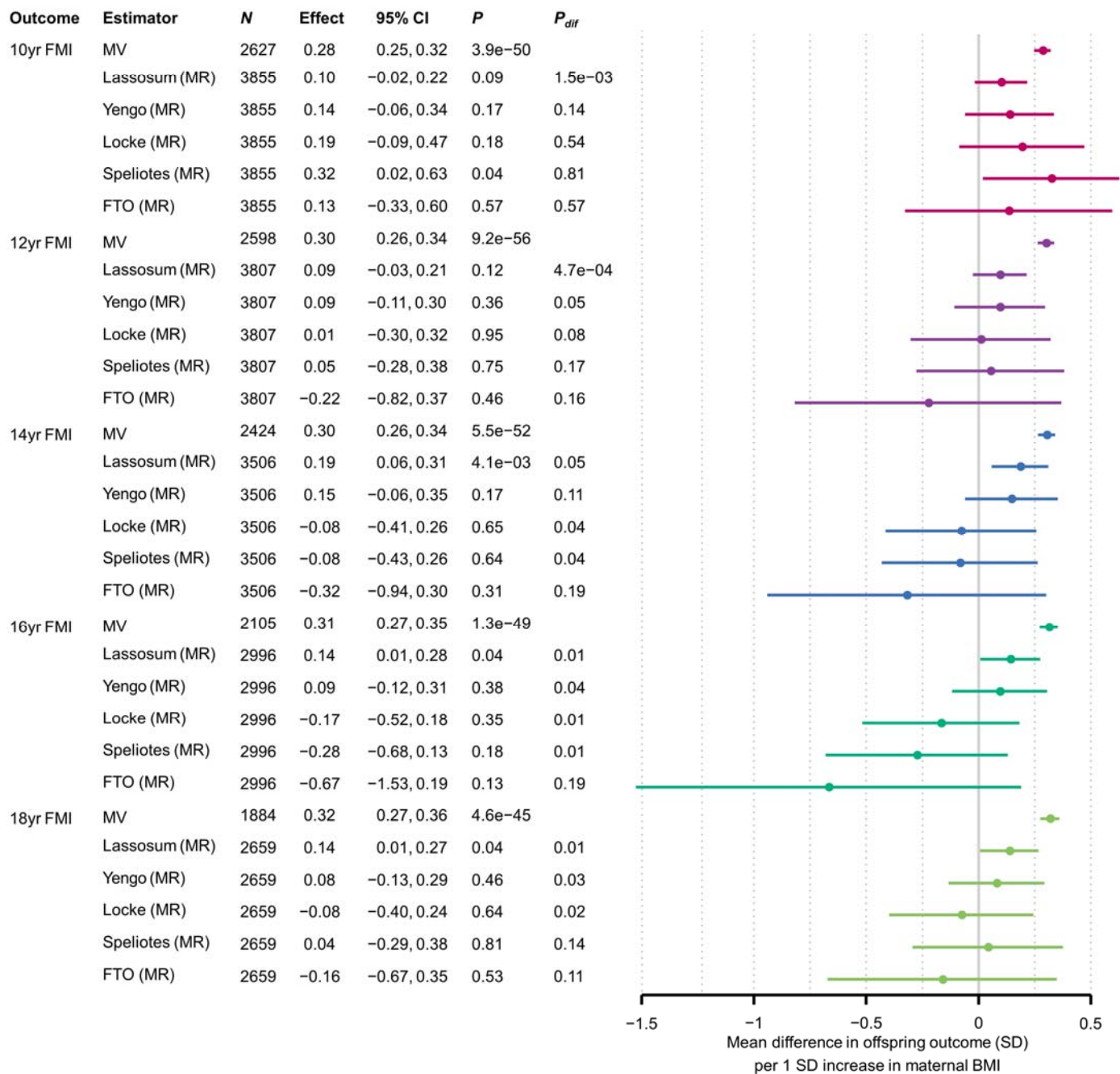
441 **Figure 3:** Mean difference in offspring BW and BMI (SD) per 1SD increase in maternal BMI, from MR  
 442 models using different SNP sets and confounder adjusted multivariable regression (MV) models



443 Confounder adjusted multivariable regression (MV) estimates are from model three (**Methods**). **N**:  
 444 Number of participants. The number of SNPs used for the MR analyses is provided separately by  
 445 cohort in **Table 1**. **P**:  $P$ -value for the null hypothesis that the effect equals zero,  $P_{dif}$ :  $P$ -value for  
 446 the null hypothesis that MR effect equals the MV effect, **FTO**: rs9939609 at the *FTO* locus, **Speliotes**,  
 447 **Locke**, **Yengo**: GWS SNPs from the GWAS with the indicated first author, **Lassosum**: PRS  
 448 calculated by the lassosum method. Colours denote outcomes

449

450 **Figure 4:** Mean difference in offspring FMI (SD) per 1SD increase in maternal BMI, from MR models  
 451 using different SNP sets and confounder adjusted multivariable regression (MV) models



452 Confounder adjusted multivariable regression (MV) estimates are from model three (**Methods**). **N**:  
 453 Number of participants. The number of SNPs used for the MR analyses is provided separately by  
 454 cohort in **Table 1**. **P**:  $P$ -value for the null hypothesis that the effect equals zero,  $P_{dif}$ :  $P$ -value for  
 455 the null hypothesis that MR effect equals the MV effect, **FTO**: rs9939609 at the *FTO* locus, **Speliotes**,  
 456 **Locke**, **Yengo**: GWS SNPs from the GWAS with the indicated first author, **Lassosum**: PRS  
 457 calculated by the lassosum method. Colours denote outcomes

458

#### 459 Parental phenotypic and PRS correlations

460 In ALSPAC there was strong evidence for correlation between maternal and paternal BMI  
461 (Pearson's  $r$ : 0.22, 95% CI: 0.16, 0.28,  $P = 7.9e-14$ ), but no evidence for correlation between  
462 maternal non-transmitted allele and paternal lassosum BMI PRS ( $r$ : 0.02, 95% CI: -0.04,  
463 0.07,  $P = 0.55$ ). For comparison, a maternal lassosum BMI PRS that was calculated from  
464 both transmitted and non-transmitted alleles was slightly more strongly correlated with the  
465 paternal PRS ( $r$ : 0.04, 95% CI: -0.01, 0.10,  $P = 0.14$ ).

#### 466 **Discussion**

467 We applied a Mendelian randomization (MR) approach using PRS calculated from maternal  
468 non-transmitted alleles, to explore the causality of associations between maternal pre-/early-  
469 pregnancy BMI and offspring birth weight (BW) and child/adolescent adiposity. For the  
470 association between maternal BMI and offspring BW, our MR and confounder adjusted  
471 multivariable regression (MV) estimates were similar. In contrast, for offspring adiposity  
472 outcomes beyond 1 year of age (including BMI and DXA-determined FMI) the MR estimates  
473 were weaker than the MV estimates. These results markedly strengthen the evidence that  
474 confounder adjusted observational associations between maternal BMI and offspring  
475 adolescent adiposity are subject to residual confounding. We found no strong evidence for a  
476 causal effect of maternal BMI on offspring adiposity beyond birth, although based on the  
477 present results we cannot rule out a small to moderate causal effect.

478 Our data build on two previous MR studies which investigated associations between  
479 maternal BMI and offspring child/adolescent adiposity (14, 23), and a methodological paper  
480 which presented a limited investigation of adiposity outcomes as an empirical example (24).  
481 Although the previous studies provided no strong evidence for a causal effect, they were  
482 limited by wide confidence intervals and/or potential biases (see **Strengths and Limitations**  
483 below). The present study overcame these limitations by using more powerful PRS and a  
484 maternal non-transmitted allele score approach. For the association between maternal BMI



485 and offspring BW, our MR and MV estimates were highly concordant, in agreement with  
486 previous MR studies that supported a causal effect of greater maternal BMI on greater  
487 offspring BW (26, 27). We have previously shown that genetic confounding (i.e. confounding  
488 due to direct effects of maternal alleles inherited by the offspring) is unlikely to explain the  
489 association of maternal BMI with BW, but may potentially be important for the association  
490 with adolescent BMI (40). The present results are consistent with this, as well as with the  
491 balance of evidence from negative paternal exposure control studies (12-18) and within  
492 sibship analyses (19, 20), which suggests that familial confounding is an important  
493 explanation of the maternal BMI-offspring child/adolescent adiposity association. Studies  
494 that examined the effect of extreme maternal obesity using a pre- and post-bariatric surgery  
495 design (91-94) have small sample sizes and have not been entirely consistent, therefore do  
496 not provide strong evidence against this conclusion.

497 Although we found no strong evidence *for* a causal effect in late childhood/adolescence, we  
498 cannot rule out a small to moderate causal effect, due to the imprecision of our MR  
499 estimates. Indeed, the primary lassosum MR estimates were greater than zero for 15 year  
500 BMI and 14–18 year FMI. We do not interpret these as unbiased estimates for the causal  
501 effect of maternal BMI, because of the possibility of pleiotropic bias (see below). These  
502 results do suggest however that some maternal exposure(s) that are correlated with the  
503 maternal BMI PRS have a causal effect on offspring child/adolescent adiposity, although our  
504 analyses are unable to distinguish whether this is a pre or postnatal effect. Plausible  
505 mechanisms include intrauterine effects such as fetal overnutrition (1) and postnatal effects  
506 such as maternal influence on offspring eating behaviour (95), but other mechanisms have  
507 been hypothesised, including periconceptual effects (such as altered oocyte structure or  
508 function (3)). In linear regression analyses we found moderate to strong evidence for  
509 associations between the maternal non-transmitted allele BMI PRS and offspring adolescent  
510 adiposity (including BMI and DXA-determined FMI). These observed maternal genetic

511 effects merit further investigation in other datasets, particularly as previous studies have not  
512 found evidence for parental genetic effects on BMI in childhood (96) or adulthood (97).

513 In ALSPAC and BiB White Europeans we observed associations between the maternal BMI  
514 PRS and potential confounders, including parental occupation, education, age and maternal  
515 smoking. These results invite careful consideration of which of the ever-increasing number of  
516 GWS associated BMI SNPs are likely (in combinations) to be the most valid instruments for  
517 MR studies, having taken account of all IV assumptions.

### 518 Strengths and limitations

519 Our study has several key strengths. We studied two prospective birth cohorts with maternal  
520 and offspring genome-wide genotype data, maternal BMI measurements and offspring  
521 adiposity outcomes available, allowing us to conduct mother-offspring MR analyses. We  
522 used state-of-the-art methods to calculate a powerful PRS from around 80,000 SNPs. This  
523 yielded a substantial increase in statistical power over previous MR studies, which analysed  
524 similar ALSPAC datasets to ours, but employed either a single SNP in the *FTO* gene (14) or  
525 allele scores calculated from up to 97 SNPs (23, 24) (similar to the “Speliotes” and “Locke”  
526 IVs in the present analysis). Our primary lassosum PRS explained 3–7% of maternal BMI  
527 variance, compared to ~1.5% for the strongest IVs used previously (power calculations are  
528 given in **Additional file 1: Supplementary information S34**).

529 Another strength over previous work is our use of maternal non-transmitted allele PRS,  
530 thereby avoiding the need to control for genetic inheritance by adjusting for offspring  
531 genotype. A previous methodological paper made use of this approach (24), but conducted a  
532 much more limited analysis of a far smaller subset of adiposity outcomes than that which we  
533 have explored here. Controlling for offspring genotype may be suboptimal for two distinct  
534 reasons: (i) it may introduce collider bias if paternal genotype influences the offspring  
535 outcome independently of offspring genotype (i.e. if paternal genetic effects exist) (24, 35),  
536 and (ii) if the investigator adjusts for a *weighted* allele score, this may introduce bias by

537 inadequately blocking the genetic inheritance path (Personal communication, Wang G,  
538 Warrington N, Evans DM, 2020). Because these two biases may be in opposite directions,  
539 the net direction of any bias affecting the largest previous study (23) is uncertain. We  
540 acknowledge that our primary MR estimates may be affected by pleiotropic bias due to the  
541 large number of SNPs, many of which had small effect sizes, that we used to calculate the  
542 PRS. This possibility is also suggested by the associations that we observed between the  
543 lassosum BMI PRS and several potential confounders of the maternal BMI-offspring  
544 adiposity association. However, sensitivity analyses suggested that for most outcomes  
545 pleiotropic bias is likely to be away from zero, which would weaken the apparent evidence  
546 for an MR-MV difference (**Additional file 1: Supplementary information S32, S33**). Thus,  
547 our primary MR results are conservative, in that they may overstate the size of the causal  
548 effect (which we hypothesised to be zero). The fact that for 10 and 15 year BMI, using more  
549 SNPs yielded increased precision and stronger evidence for an MR-MV difference (**Figure**  
550 **2**), despite the potential pleiotropic bias away from zero, illustrates the benefit of our  
551 approach.

552 We also conducted extensive sensitivity analyses to explore other potential biases in our  
553 results. When we used a linear mixed model (LMM) to adjust for population structure the  
554 results were similar to our primary estimates. We did not remove cryptic relatedness for our  
555 primary analyses, in order to maximise the sample size and because the LMM controls for  
556 bias due to cryptic relatedness (71). However, results were similar when we removed cryptic  
557 relatedness at a level corresponding to first cousins. Finally, we found no strong evidence  
558 that maternal and paternal lassosum BMI PRS were correlated, suggesting that our results  
559 are not importantly biased due to assortative mating.

560 We acknowledge several limitations of our study. First, although the results in BiB and  
561 ALSPAC were similar, replication in other cohorts with suitable data, and in particular with  
562 adolescent adiposity measures (which we could only examine in ALSPAC) would be  
563 valuable. A previous study meta-analysed data from ALSPAC and the Generation R cohort

564 using 32 maternal SNPs (23), but we were unable to extend our approach to Generation R  
565 due to the unavailability of maternal genome-wide SNP data. **Additional file 1:**  
566 **Supplementary information S35** compares the present analysis to previous analyses of  
567 ALSPAC data. We have only studied UK participants. However, the similarity of findings  
568 between White European and South Asian BiB participants, and between BiB (a cohort with  
569 high levels of deprivation born during the obesity epidemic) and ALSPAC (more affluent than  
570 the UK average) suggest that our findings may be generalisable to other populations.  
571 Second, BMI (especially self-reported BMI) is an imperfect proxy measure for adiposity.  
572 However, it has been shown previously in ALSPAC that self-reported pre-pregnancy BMI is  
573 strongly correlated with BMI measured in early pregnancy (23), and that any misreporting  
574 does not markedly differ by mean weight (98). There is also evidence that the correlation  
575 with directly measured adiposity is strong for child and adult BMI (99, 100) and moderate for  
576 neonatal weight (101); furthermore, our results were similar for DXA derived FMI. Third, we  
577 assumed that causal relationships between exposures and outcomes were linear. Although  
578 our data provided no evidence for non-linearity, a slight plateauing of the observational  
579 association between maternal BMI and offspring child/adolescent BMI at higher maternal  
580 BMI levels was previously observed in a large meta-analysis (6). MR estimates such as  
581 ours, which assume linearity, nevertheless approximate the population-averaged causal  
582 effect (which is the average effect resulting from a unit increase in the exposure for all  
583 individuals in the population, regardless of their initial exposure level) (102). However, given  
584 the shape of the observational association (6) it is plausible that our MR estimates overstate  
585 the true causal effect for mothers with overweight/obesity. Finally, the samples used for  
586 some of our analyses (particularly for MV models) were smaller than the full samples at  
587 baseline due to missing data and loss to follow up, raising the possibility that our results are  
588 affected by selection bias. However, the distributions of maternal BMI, BW and offspring sex  
589 were similar for the samples used for our analyses and the samples at baseline, and MV  
590 results were similar when we refitted models on larger samples without excluding individuals

591 with missing paternal BMI data. It therefore seems unlikely that selection bias would be of  
592 sufficient magnitude to alter our conclusions.

### 593 Conclusion

594 We explored the causality of associations between maternal pre-/early-pregnancy BMI and  
595 offspring BW and child/adolescent adiposity (measured by BMI and DXA-determined FMI),  
596 using an MR approach with PRS calculated from maternal non-transmitted alleles. This  
597 approach yielded narrower confidence intervals compared with previous studies, and  
598 avoided sources of bias that may have affected previous work. We found no strong evidence  
599 for a causal effect of maternal BMI on offspring adiposity beyond birth, but strong evidence  
600 that confounder adjusted observational associations between maternal BMI and adolescent  
601 adiposity are affected by residual confounding. Although we cannot rule out a small or  
602 moderate causal effect on child/adolescent adiposity, the present study suggests that higher  
603 maternal pre-/early-pregnancy BMI is not a key driver of greater adiposity in the next  
604 generation. Thus, our results support interventions that target the whole population for  
605 reducing overweight and obesity, rather than a specific focus on women of reproductive age.

### 606 **Abbreviations**

ALSPAC	Avon Longitudinal Study of Parents and Children
BiB	Born in Bradford
BMI	body mass index
DXA	dual-energy X-ray absorptiometry
FMI	fat mass index
GWAS	genome wide association study
GWS	genome wide significant ( $P < 5e-8$ )
IV	instrumental variable
LMM	linear mixed model
MR	Mendelian randomization
MV	multivariable
NCMP	UK Government National Child Measurement Programme
PC	principal component
PRS	polygenic risk score(s)
QC	quality control
SD	standard deviation
TSLs	two-stage least squares
UKB	UK Biobank
SNP	single nucleotide polymorphism

607

608 **Declarations**

609 Ethics approval and consent to participate

610 For ALSPAC, ethical approval was obtained from the ALSPAC Ethics and Law Committee  
611 and the Local Research Ethics Committees. For BiB, ethical approval was obtained from  
612 Bradford National Health Service Ethics Committee (ref 06/Q1202/48). UK Biobank received  
613 ethical approval from the North West Multi-centre Research Ethics Committee (MREC) (ref  
614 11/NW/0382). Informed consent was obtained from participants of all studies.

615 Consent to publish

616 This manuscript does not include details, images, or videos relating to an individual person,  
617 therefore consent for publication is not required, beyond the informed consent provided by  
618 all study participants as described above..

619 Author's contributions

620 Conceptualization: TAB, MRJ, DAL

621 Methodology: DAL, VZ, PFO, MG, AL, SS, DME, MRJ

622 Software: TAB, RCR, VK, GCP

623 Formal analysis: TAB

624 Data curation: TAB, IT, AD, ACA, DM, TY, MCB

625 Writing- original draft preparation: TAB, MRJ, DAL, RCR, PFO

626 Writing- review and editing: TAB, MRJ, DAL, RCR, PFO, VZ, MG, AL, SS, IT, AD, DM, TY,

627 VK, ACA, GCP, DME, MCB

628 This publication is the work of the authors and TAB, MRJ and DAL will serve as guarantors

629 for the contents of this paper. All authors read and approved the final manuscript.

630 Competing interests

631 DAL has received support from numerous national and international government and charity  
632 funders and from Medtronic LTD and Roche Diagnostics for research unconnected with that  
633 presented in this study. DAL is an associate editor for BMC Medicine. GCP is an employee  
634 of 23andMe Inc and may hold stock or stock options. All other authors report no conflict of  
635 interest.

636 Acknowledgements

637 We thank Tom Palmer, Eleanor Sanderson and Stephen Burgess for helpful discussions,  
638 Mark Iles for provision of BiB ethnicity variables and Amanda Hill and David Hughes for  
639 support in delivery and management of the ALSPAC data. We gratefully acknowledge the  
640 GIANT (Genetic Investigation of ANthropometric Traits) Consortium for making GWAS  
641 summary statistics available. This publication is the work of the authors and may not reflect  
642 the views of those acknowledged here. Where authors are identified as personnel of the  
643 International Agency for Research on Cancer / World Health Organization, the authors alone  
644 are responsible for the views expressed in this article and they do not necessarily represent  
645 the decisions, policy or views of the International Agency for Research on Cancer / World  
646 Health Organization.

647 We are extremely grateful to all the families who took part in ALSPAC, the midwives for their  
648 help in recruiting them, and the whole ALSPAC team, which includes interviewers, computer  
649 and laboratory technicians, clerical workers, research scientists, volunteers, managers,  
650 receptionists and nurses. Born in Bradford is only possible because of the enthusiasm and  
651 commitment of the Children and Parents in BiB. We are grateful to all the participants, health  
652 professionals and researchers who have made Born in Bradford happen. We gratefully  
653 acknowledge the contribution of TPP and the TPP ResearchOne team in completing study  
654 participant matching to GP primary care records and in providing ongoing informatics  
655 support. This research has been conducted using the UK Biobank Resource under

656 applications 10035, 13436 and 236 granting access to the corresponding UK Biobank  
657 genetic and phenotype data. We are extremely grateful to all the UK Biobank participants,  
658 investigators and team members.

#### 659 Availability of data and materials

660 The data that support the findings of this study are available from the ALSPAC, BiB and UK  
661 Biobank executives, but restrictions apply to the availability of these data, which were used  
662 under license for the current study, and so are not publicly available. The ALSPAC study  
663 website (<http://www.bristol.ac.uk/alspac/researchers/our-data/>) contains details of all the  
664 data that are available through a fully searchable data dictionary and variable search tool.  
665 Scientists are encouraged and able to use BiB data. Data requests are made to the BiB  
666 executive using the form available from the study website: <http://www.borninbradford.nhs.uk>  
667 (please click on 'Science and Research' to access the form). Guidance for researchers and  
668 collaborators, the study protocol and the data collection schedule are all available via the  
669 website. All requests are carefully considered and accepted where possible. UK Biobank  
670 data are available from the UK Biobank (<http://biobank.ndph.ox.ac.uk/showcase/>). GWAS  
671 summary statistics are publicly available from the GIANT consortium website:  
672 [https://portals.broadinstitute.org/collaboration/giant/index.php/GIANT\\_consortium\\_data\\_files](https://portals.broadinstitute.org/collaboration/giant/index.php/GIANT_consortium_data_files).  
673 (83).

#### 674 Funding

675 The UK Medical Research Council and Wellcome (102215/2/13/2) and the University of  
676 Bristol provide core support for ALSPAC. Genotyping of the ALSPAC maternal samples was  
677 funded by the Wellcome Trust (WT088806) and the offspring samples were genotyped by  
678 Sample Logistics and Genotyping Facilities at the Wellcome Trust Sanger Institute and  
679 LabCorp (Laboratory Corporation of America) using support from 23andMe. A  
680 comprehensive list of grants funding is available on the ALSPAC website  
681 (<http://www.bristol.ac.uk/alspac/external/documents/grant-acknowledgements.pdf>). BiB



682 receives core infrastructure funding from the Wellcome Trust (WT101597MA), a joint grant  
683 from the UK Medical Research Council (MRC) and UK Economic and Social Science  
684 Research Council (ESRC) (MR/N024397/1), the British Heart Foundation (CS/16/4/32482)  
685 and the National Institute for Health Research (NIHR) under its Applied Research  
686 Collaboration Yorkshire and Humber (NIHR200166). Further support for genome-wide data  
687 is from the UK Medical Research Council (G0600705) and the National Institute of Health  
688 Research (NF-SI-0611-10196). The work presented here was supported by the US National  
689 Institute of Health (R01 DK10324), the European Research Council under the European  
690 Union's Seventh Framework Programme (FP7/2007-2013)/ERC grant agreement (669545)  
691 and the British Heart Foundation (AA/18/7/34219). TAB is supported by the Medical  
692 Research Council (MRC) (UK) (MR/K501281/1), TAB and DME are supported by the  
693 NHMRC (Australia) (GNT1183074 and GNT1157714), DAL, TAB, MCB and RCR work  
694 in/are affiliated with a unit that is supported by the UK Medical Research Council  
695 (MC\_UU\_00011/1 & MC\_UU\_00011/6) and DAL is a British Heart Foundation Chair  
696 (CH/F/20/90003) and NIHR Senior Investigator (NF-0616-10102). DAL, MCB and TAB are  
697 supported by the British Heart Foundation Accelerator Award at the University of Bristol  
698 (AA/18/7/34219). MCB's contribution to this work was supported by a UK MRC Skills  
699 Development Fellowship (MR/P014054/1). VK is funded by the European Union's Horizon  
700 2020 research and innovation program under the Marie Skłodowska-Curie grant (721567).  
701 MRJ is funded by EU-H2020 LifeCycle Action (733206) which also supports DAL's research,  
702 EU-H2020 EDCMET (825762), EU-H2020 EUCAN Connect (824989), EU H2020-MSCA-  
703 ITN-2016 CAPICE Marie Skłodowska-Curie grant (721567) and the MRC (UK)  
704 (MRC/BBSRC MR/S03658X/1 [JPI HDHL]). RCR is a de Pass Vice Chancellor's Research  
705 Fellow at the University of Bristol. AL and MRJ are supported by the MRC (UK)  
706 (MR/M013138/1) and the European Union Horizon 2020 programme (633595). The funders  
707 had no role in study design, data collection and analysis, decision to publish, or preparation  
708 of the manuscript.

## 709 References

- 710 1. Lawlor DA. The Society for Social Medicine John Pemberton Lecture 2011.  
711 Developmental overnutrition—an old hypothesis with new importance? *Int J Epidemiol.*  
712 2013;42(1):7-29.
- 713 2. Godfrey KM, Reynolds RM, Prescott SL, *et al.* Influence of maternal obesity on the  
714 long-term health of offspring. *Lancet Diabetes Endo.* 2017;5(1):53-64.
- 715 3. Fleming TP, Watkins AJ, Velazquez MA, *et al.* Origins of lifetime health around the  
716 time of conception: causes and consequences. *The Lancet.* 2018;391(10132):1842-52.
- 717 4. Larqué E, Labayen I, Flodmark C-E, *et al.* From conception to infancy—early risk  
718 factors for childhood obesity. *Nature Reviews Endocrinology.* 2019:1.
- 719 5. Voerman E, Santos S, Golab BP, *et al.* Maternal body mass index, gestational weight  
720 gain, and the risk of overweight and obesity across childhood: An individual participant data  
721 meta-analysis. *PLoS Med.* 2019;16(2):e1002744.
- 722 6. Heslehurst N, Vieira R, Akhter Z, *et al.* The association between maternal body mass  
723 index and child obesity: A systematic review and meta-analysis. *PLoS Med.*  
724 2019;16(6):e1002817.
- 725 7. Reynolds RM, Allan KM, Raja EA, *et al.* Maternal obesity during pregnancy and  
726 premature mortality from cardiovascular event in adult offspring: follow-up of 1 323 275  
727 person years. *BMJ.* 2013;347:f4539.
- 728 8. Lahti-Pulkkinen M, Bhattacharya S, Wild SH, *et al.* Consequences of being  
729 overweight or obese during pregnancy on diabetes in the offspring: a record linkage study in  
730 Aberdeen, Scotland. *Diabetologia.* 2019:1-8.
- 731 9. Friedman JE. Developmental programming of obesity and diabetes in mouse,  
732 monkey, and man in 2018: where are we headed? *Diabetes.* 2018;67(11):2137-51.
- 733 10. Poston L. Maternal obesity, gestational weight gain and diet as determinants of  
734 offspring long term health. *Best Practice & Research Clinical Endocrinology & Metabolism.*  
735 2012;26(5):627-39.
- 736 11. Lawlor DA, Tilling K, Davey Smith G. Triangulation in aetiological epidemiology. *Int J*  
737 *Epidemiol.* 2016;45(6):1866-86.
- 738 12. Fleten C, Nystad W, Stigum H, *et al.* Parent-offspring body mass index associations  
739 in the Norwegian Mother and Child Cohort Study: a family-based approach to studying the  
740 role of the intrauterine environment in childhood adiposity. *Am J Epidemiol.* 2012;176(2):83-  
741 92.
- 742 13. Patro B, Liber A, Zalewski B, Poston L, Szajewska H, Koletzko B. Maternal and  
743 paternal body mass index and offspring obesity: a systematic review. *Ann Nutr Metab.*  
744 2013;63(1-2):32-41.
- 745 14. Lawlor DA, Timpson NJ, Harbord RM, *et al.* Exploring the developmental  
746 overnutrition hypothesis using parental–offspring associations and FTO as an instrumental  
747 variable. *PLoS Med.* 2008;5(3):e33.
- 748 15. Gaillard R, Steegers EA, Duijts L, *et al.* Childhood cardiometabolic outcomes of  
749 maternal obesity during pregnancy: The Generation R Study. *Hypertension.* 2014;63(4):683-  
750 91.
- 751 16. Santos Ferreira DL, Williams DM, Kangas AJ, *et al.* Association of pre-pregnancy  
752 body mass index with offspring metabolic profile: Analyses of 3 European prospective birth  
753 cohorts. *PLoS Med.* 2017;14(8):e1002376.
- 754 17. Zalbahar N, Najman J, McIntyre HD, Mamun A. Parental pre-pregnancy BMI  
755 influences on offspring BMI and waist circumference at 21 years. *Aust N Z J Public Health.*  
756 2016;40(6):572-8.
- 757 18. Sørensen TI, Ajslev TA, Ängquist L, Morgen CS, Ciuchi IG, Smith GD. Comparison  
758 of associations of maternal peri-pregnancy and paternal anthropometrics with child  
759 anthropometrics from birth through age 7 y assessed in the Danish National Birth Cohort.  
760 *Am J Clin Nutr.* 2016;104(2):389-96.

- 761 19. Branum AM, Parker JD, Keim SA, Schempf AH. Prepregnancy body mass index and  
762 gestational weight gain in relation to child body mass index among siblings. *Am J Epidemiol.*  
763 2011;kwr250.
- 764 20. Lawlor DA, Lichtenstein P, Långström N. Association of Maternal Diabetes Mellitus in  
765 Pregnancy With Offspring Adiposity Into Early Adulthood: Clinical Perspective. *Circulation.*  
766 2011;123(3):258-65.
- 767 21. Davey Smith G, Ebrahim S. 'Mendelian randomization': can genetic epidemiology  
768 contribute to understanding environmental determinants of disease? *Int J Epidemiol.*  
769 2003;32(1):1-22.
- 770 22. Lawlor DA, Harbord RM, Sterne JA, Timpson N, Davey Smith G. Mendelian  
771 randomization: using genes as instruments for making causal inferences in epidemiology.  
772 *Stat Med.* 2008;27(8):1133-63.
- 773 23. Richmond RC, Timpson NJ, Felix JF, *et al.* Using genetic variation to explore the  
774 causal effect of maternal pregnancy adiposity on future offspring adiposity: a Mendelian  
775 randomisation study. *PLoS Med.* 2017;14(1):e1002221.
- 776 24. Lawlor D, Richmond R, Warrington N, *et al.* Using Mendelian randomization to  
777 determine causal effects of maternal pregnancy (intrauterine) exposures on offspring  
778 outcomes: Sources of bias and methods for assessing them. *Wellcome Open Research.*  
779 2017;2.
- 780 25. Ebbeling CB, Pawlak DB, Ludwig DS. Childhood obesity: public-health crisis,  
781 common sense cure. *The Lancet.* 2002;360(9331):473-82.
- 782 26. Tyrrell J, Richmond RC, Palmer TM, *et al.* Genetic evidence for causal relationships  
783 between maternal obesity-related traits and birth weight. *JAMA.* 2016;315(11):1129-40.
- 784 27. Chen J, Bacelis J, Sole-Navais P, *et al.* Dissecting maternal and fetal genetic effects  
785 underlying the associations between maternal phenotypes, birth outcomes, and adult  
786 phenotypes: A mendelian-randomization and haplotype-based genetic score analysis in  
787 10,734 mother–infant pairs. *PLoS Med.* 2020;17(8):e1003305.
- 788 28. Skrivankova VW, Richmond RC, Woolf BA, *et al.* Strengthening the Reporting of  
789 Observational Studies in Epidemiology using Mendelian Randomization: the STROBE-MR  
790 Statement. *JAMA.* 2021;326(16):1614-21.
- 791 29. Boyd A, Golding J, Macleod J, *et al.* Cohort profile: the 'children of the 90s'—the  
792 index offspring of the Avon Longitudinal Study of Parents and Children. *Int J Epidemiol.*  
793 2013;42(1):111-27.
- 794 30. Fraser A, Macdonald-Wallis C, Tilling K, *et al.* Cohort profile: the Avon Longitudinal  
795 Study of Parents and Children: ALSPAC mothers cohort. *Int J Epidemiol.* 2013;42(1):97-110.
- 796 31. Wright J, Small N, Raynor P, *et al.* Cohort profile: the Born in Bradford multi-ethnic  
797 family cohort study. *Int J Epidemiol.* 2012;42(4):978-91.
- 798 32. West J, Santorelli G, Whincup PH, *et al.* Association of maternal exposures with  
799 adiposity at age 4/5 years in white British and Pakistani children: findings from the Born in  
800 Bradford study. *Diabetologia.* 2018;61(1):242-52.
- 801 33. Pearce N, Lawlor DA. Causal inference—so much more than statistics. *Int J*  
802 *Epidemiol.* 2016;45(6):1895-903.
- 803 34. Zhang G, Bacelis J, Lengyel C, *et al.* Assessing the causal relationship of maternal  
804 height on birth size and gestational age at birth: a mendelian randomization analysis. *PLoS*  
805 *Med.* 2015;12(8):e1001865.
- 806 35. Tubbs JD, Zhang YD, Sham PC. Intermediate confounding in trio relationships: The  
807 importance of complete data in effect size estimation. *Genet Epidemiol.* 2020;44(4):395-9.
- 808 36. Swanson SA, Hernán MA. Commentary: how to report instrumental variable analyses  
809 (suggestions welcome). *Epidemiology.* 2013;24(3):370-4.
- 810 37. Burgess S, Thompson SG. *Mendelian randomization: methods for using genetic*  
811 *variants in causal estimation.* Boca Raton, FL: CRC Press; 2015.
- 812 38. Sheehan NA, Didelez V. Epidemiology, genetic epidemiology and Mendelian  
813 randomisation: more need than ever to attend to detail. *Hum Genet.* 2020;139(1):121-36.
- 814 39. Office for National Statistics. *Ethnic group statistics: A guide for the collection and*  
815 *classification of ethnicity data.* The Stationery Office London; 2003.

- 816 40. Bond TA, Karhunen V, Wielscher M, *et al.* Exploring the role of genetic confounding  
817 in the association between maternal and offspring body mass index: evidence from three  
818 birth cohorts. *Int J Epidemiol.* 2020;49(1):233-43.
- 819 41. Price AL, Weale ME, Patterson N, *et al.* Long-range LD can confound genome scans  
820 in admixed populations. *The American Journal of Human Genetics.* 2008;83(1):132-5.
- 821 42. International HapMap Consortium. A second generation human haplotype map of  
822 over 3.1 million SNPs. *Nature.* 2007;449(7164):851.
- 823 43. Yang J, Lee SH, Goddard ME, Visscher PM. GCTA: a tool for genome-wide complex  
824 trait analysis. *Am J Hum Genet.* 2011;88(1):76-82.
- 825 44. Delaneau O, Zagury J-F, Marchini J. Improved whole-chromosome phasing for  
826 disease and population genetic studies. *Nature Methods.* 2013;10(1):5-6.
- 827 45. Das S, Forer L, Schönherr S, *et al.* Next-generation genotype imputation service and  
828 methods. *Nat Genet.* 2016;48(10):1284.
- 829 46. McCarthy S, Das S, Kretzschmar W, *et al.* A reference panel of 64,976 haplotypes  
830 for genotype imputation. *Nat Genet.* 2016;48(10):1279.
- 831 47. The 1000 Genomes Project Consortium. A global reference for human genetic  
832 variation. *Nature.* 2015;526(7571):68.
- 833 48. Huang J, Howie B, McCarthy S, *et al.* Improved imputation of low-frequency and rare  
834 variants using the UK10K haplotype reference panel. *Nature Communications.* 2015;6:8111.
- 835 49. Loh P-R, Danecek P, Palamara PF, *et al.* Reference-based phasing using the  
836 Haplotype Reference Consortium panel. *Nat Genet.* 2016;48(11):1443.
- 837 50. Euesden J, Lewis CM, O'Reilly PF. PRSice: Polygenic Risk Score software.  
838 *Bioinformatics.* 2015;31(9):1466.
- 839 51. Purcell S. PLINK manual: LD-based result clumping procedure 2007 [Available from:  
840 <http://zzz.bwh.harvard.edu/plink/clump.shtml>].
- 841 52. Vilhjálmsson BJ, Yang J, Finucane HK, *et al.* Modeling linkage disequilibrium  
842 increases accuracy of polygenic risk scores. *The American Journal of Human Genetics.*  
843 2015;97(4):576-92.
- 844 53. Mak TSH, Porsch RM, Choi SW, Zhou X, Sham PC. Polygenic scores via penalized  
845 regression on summary statistics. *Genet Epidemiol.* 2017;41(6):469-80.
- 846 54. Loh P-R, Kichaev G, Gazal S, Schoech AP, Price AL. Mixed-model association for  
847 biobank-scale datasets. *Nat Genet.* 2018:1.
- 848 55. Dudbridge F. Power and predictive accuracy of polygenic risk scores. *PLoS Genet.*  
849 2013;9(3):e1003348.
- 850 56. Choi SW, Mak TSH, O'Reilly P. A guide to performing Polygenic Risk Score  
851 analyses. *BioRxiv.* 2018:416545.
- 852 57. Wray NR, Yang J, Hayes BJ, Price AL, Goddard ME, Visscher PM. Pitfalls of  
853 predicting complex traits from SNPs. *Nature Reviews Genetics.* 2013;14(7):507.
- 854 58. Sudlow C, Gallacher J, Allen N, *et al.* UK biobank: an open access resource for  
855 identifying the causes of a wide range of complex diseases of middle and old age. *PLoS*  
856 *Med.* 2015;12(3):e1001779.
- 857 59. Bycroft C, Freeman C, Petkova D, *et al.* Genome-wide genetic data on ~ 500,000 UK  
858 Biobank participants. *BioRxiv.* 2017:166298.
- 859 60. Locke AE, Kahali B, Berndt SI, *et al.* Genetic studies of body mass index yield new  
860 insights for obesity biology. *Nature.* 2015;518(7538):197-206.
- 861 61. Yengo L, Sidorenko J, Kemper KE, *et al.* Meta-analysis of genome-wide association  
862 studies for height and body mass index in ~700000 individuals of European ancestry. *Hum*  
863 *Mol Genet.* 2018;27(20):3641-9.
- 864 62. Galinsky KJ, Bhatia G, Loh P-R, *et al.* Fast principal-component analysis reveals  
865 convergent evolution of ADH1B in Europe and East Asia. *The American Journal of Human*  
866 *Genetics.* 2016;98(3):456-72.
- 867 63. Chang CC, Chow CC, Tellier LC, Vattikuti S, Purcell SM, Lee JJ. Second-generation  
868 PLINK: rising to the challenge of larger and richer datasets. *Gigascience.* 2015;4(1):7.
- 869 64. Willer CJ, Li Y, Abecasis GR. METAL: fast and efficient meta-analysis of  
870 genomewide association scans. *Bioinformatics.* 2010;26(17):2190-1.

- 871 65. Berisa T, Pickrell JK. Approximately independent linkage disequilibrium blocks in  
872 human populations. *Bioinformatics*. 2016;32(2):283.
- 873 66. Frayling TM, Timpson NJ, Weedon MN, *et al*. A common variant in the FTO gene is  
874 associated with body mass index and predisposes to childhood and adult obesity. *Science*.  
875 2007;316(5826):889-94.
- 876 67. Speliotes EK, Willer CJ, Berndt SI, *et al*. Association analyses of 249,796 individuals  
877 reveal 18 new loci associated with body mass index. *Nat Genet*. 2010;42(11):937.
- 878 68. Wu Y, Zheng Z, Visscher PM, Yang J. Quantifying the mapping precision of genome-  
879 wide association studies using whole-genome sequencing data. *Genome Biol*.  
880 2017;18(1):86.
- 881 69. Arnold M, Raffler J, Pfeufer A, Suhre K, Kastenmüller G. SNIIPA: an interactive,  
882 genetic variant-centered annotation browser. *Bioinformatics*. 2014;31(8):1334-6.
- 883 70. Thomas DC, Lawlor DA, Thompson JR. Re: Estimation of bias in nongenetic  
884 observational studies using “Mendelian triangulation” by Bautista *et al*. *Ann Epidemiol*.  
885 2007;7(17):511-3.
- 886 71. Yang J, Zaitlen NA, Goddard ME, Visscher PM, Price AL. Advantages and pitfalls in  
887 the application of mixed-model association methods. *Nat Genet*. 2014;46(2):100.
- 888 72. Hemani G, Bowden J, Davey Smith G. Evaluating the potential role of pleiotropy in  
889 Mendelian randomization studies. *Hum Mol Genet*. 2018;27(R2):R195-R208.
- 890 73. Burgess S, Thompson SG, Collaboration CCG. Avoiding bias from weak instruments  
891 in Mendelian randomization studies. *Int J Epidemiol*. 2011;40(3):755-64.
- 892 74. Bowden J, Davey Smith G, Burgess S. Mendelian randomization with invalid  
893 instruments: effect estimation and bias detection through Egger regression. *Int J Epidemiol*.  
894 2015;44(2):512-25.
- 895 75. Brion M-JA, Shakhbazov K, Visscher PM. Calculating statistical power in Mendelian  
896 randomization studies. *Int J Epidemiol*. 2012;42(5):1497-501.
- 897 76. O’Connell J, Gurdasani D, Delaneau O, *et al*. A General Approach for Haplotype  
898 Phasing across the Full Spectrum of Relatedness. *PLOS Genetics*. 2014;10(4):e1004234.
- 899 77. Khera AV, Chaffin M, Wade KH, *et al*. Polygenic prediction of weight and obesity  
900 trajectories from birth to adulthood. *Cell*. 2019;177(3):587-96. e9.
- 901 78. Evans DM, Brion MJA, Paternoster L, *et al*. Mining the human phenome using allelic  
902 scores that index biological intermediates. *PLoS Genetics*. 2013;9(10):e1003919.
- 903 79. Evans DM, Visscher PM, Wray NR. Harnessing the information contained within  
904 genome-wide association studies to improve individual prediction of complex disease risk.  
905 *Hum Mol Genet*. 2009;18(18):3525-31.
- 906 80. Choi SW, O’Reilly PF. PRSice-2: Polygenic Risk Score software for biobank-scale  
907 data. *GigaScience*. 2019;8(7):giz082.
- 908 81. Mak TSH, Porsch RM. *lassosum: LASSO with summary statistics and a reference*  
909 *panel. R package version 0.4.4*. 2019.
- 910 82. Bycroft C, Freeman C, Petkova D, *et al*. The UK Biobank resource with deep  
911 phenotyping and genomic data. *Nature*. 2018;562(7726):203-9.
- 912 83. GIANT Consortium. GWAS meta-analysis summary statistics for BMI: Locke *et al*. +  
913 UK Biobank 2018 [Available from:  
914 [https://portals.broadinstitute.org/collaboration/giant/images/c/c8/Meta-](https://portals.broadinstitute.org/collaboration/giant/images/c/c8/Meta-analysis_Locke_et_al%2BUKBiobank_2018_UPDATED.txt.gz)  
915 [analysis\\_Locke\\_et\\_al%2BUKBiobank\\_2018\\_UPDATED.txt.gz](https://portals.broadinstitute.org/collaboration/giant/images/c/c8/Meta-analysis_Locke_et_al%2BUKBiobank_2018_UPDATED.txt.gz).
- 916 84. Burgess S, Small DS, Thompson SG. A review of instrumental variable estimators for  
917 Mendelian randomization. *Stat Methods Med Res*. 2017;26(5):2333-55.
- 918 85. Yang Q, Sanderson E, Tilling K, Borges MC, Lawlor DA. Exploring and mitigating  
919 potential bias when genetic instrumental variables are associated with multiple non-exposure  
920 traits in Mendelian randomization. *medRxiv*. 2019:19009605.
- 921 86. StataCorp. *Stata 13 Base Reference Manual*. College Station, TX: Stata Press; 2013.
- 922 87. R Core Team. *R: A language and environment for statistical computing*. Vienna,  
923 Austria: R Foundation for Statistical Computing; 2018.
- 924 88. Cole TJ, Williams AF, Wright CM. Revised birth centiles for weight, length and head  
925 circumference in the UK-WHO growth charts. *Ann Hum Biol*. 2011;38(1):7-11.

- 926 89. World Health Organization. *WHO child growth standards: length/height-for-age,*  
927 *weight-for-age, weight-for-length, weight-for-height and body mass index-for-age: methods*  
928 *and development*. World Health Organization; 2006.
- 929 90. Vidmar SI, Cole TJ, Pan H. Standardizing anthropometric measures in children and  
930 adolescents with functions for egen: Update. *Stata J.* 2013;13(2):366-78.
- 931 91. Smith J, Cianflone K, Biron S, *et al.* Effects of maternal surgical weight loss in  
932 mothers on intergenerational transmission of obesity. *The Journal of Clinical Endocrinology*  
933 *& Metabolism.* 2009;94(11):4275-83.
- 934 92. Kral JG, Biron S, Simard S, *et al.* Large maternal weight loss from obesity surgery  
935 prevents transmission of obesity to children who were followed for 2 to 18 years. *Pediatrics.*  
936 2006;118(6):e1644-e9.
- 937 93. Willmer M, Berglind D, Sørensen TI, Näslund E, Tynelius P, Rasmussen F. Surgically  
938 induced interpregnancy weight loss and prevalence of overweight and obesity in offspring.  
939 *PLoS One.* 2013;8(12):e82247.
- 940 94. Barisione M, Carlini F, Gradasci R, Camerini G, Adami GF. Body weight at  
941 developmental age in siblings born to mothers before and after surgically induced weight  
942 loss. *Surg Obes Relat Dis.* 2012;8(4):387-91.
- 943 95. Patel C, Karasouli E, Shuttlewood E, Meyer C. Food Parenting Practices among  
944 Parents with Overweight and Obesity: A Systematic Review. *Nutrients.* 2018;10(12):1966.
- 945 96. Schnurr TM, Morgen CS, Borisevich D, *et al.* The influence of transmitted and non-  
946 transmitted parental BMI-associated alleles on the risk of overweight in childhood. *Sci Rep.*  
947 2020;10(1):1-10.
- 948 97. Kong A, Thorleifsson G, Frigge ML, *et al.* The nature of nurture: Effects of parental  
949 genotypes. *Science.* 2018;359(6374):424-8.
- 950 98. Sharp GC, Lawlor DA, Richmond RC, *et al.* Maternal pre-pregnancy BMI and  
951 gestational weight gain, offspring DNA methylation and later offspring adiposity: findings  
952 from the Avon Longitudinal Study of Parents and Children. *Int J Epidemiol.* 2015;44(4):1288-  
953 304.
- 954 99. Lawlor DA, Benfield L, Logue J, *et al.* Association between general and central  
955 adiposity in childhood, and change in these, with cardiovascular risk factors in adolescence:  
956 prospective cohort study. *BMJ.* 2010;341:c6224.
- 957 100. Fox C, Massaro J, Hoffmann U, *et al.* Abdominal visceral and subcutaneous adipose  
958 tissue compartments: association with metabolic risk factors in the Framingham Heart Study.  
959 *Circulation.* 2007;116(1):39-48.
- 960 101. Eriksson B, Löf M, Forsum E. Body composition in full-term healthy infants measured  
961 with air displacement plethysmography at 1 and 12 weeks of age. *Acta Paediatr.*  
962 2010;99(4):563-8.
- 963 102. Burgess S, Davies NM, Thompson SG, EPIC-InterAct Consortium. Instrumental  
964 variable analysis with a nonlinear exposure-outcome relationship. *Epidemiology.*  
965 2014;25(6):877-85.

## 966 **Additional material**

967 File name: "Additional\_file\_1.pdf"

968 Title: Supplementary information

969 Description: Additional file 1: Supplementary information S1–S35. For descriptions of  
970 individual Supplementary information items, please see the contents page of Additional file  
971 1.