

## Effects of worldwide interventions and vaccination on COVID-19 between waves and countries

Yong Ge<sup>1,2,\*#</sup>, Wen-Bin Zhang<sup>1,2,#</sup>, Haiyan Liu<sup>3,#</sup>, Corrine W Ruktanonchai<sup>4,5,#</sup>,  
Maogui Hu<sup>1,2</sup>, Xilin Wu<sup>1,2</sup>, Yongze Song<sup>6</sup>, Nick W Ruktanonchai<sup>4,5</sup>, Wei Yan<sup>7,#</sup>,  
Luzhao Feng<sup>8</sup>, Zhongjie Li<sup>9</sup>, Weizhong Yang<sup>8</sup>, Mengxiao Liu<sup>1,2</sup>, Andrew J Tatem<sup>5</sup>,  
Shengjie Lai<sup>5\*</sup>

### Affiliations:

- 1 State Key Laboratory of Resources and Environmental Information System, Institute of Geographic Sciences and Natural Resources Research, Chinese Academy of Sciences, Beijing, P.R. China
- 2 College of Resources and Environment, University of Academy of Sciences, Beijing, P.R. China
- 3 Marine Data Center, South Marine Science and Engineering Guangdong Laboratory (Zhuhai), Zhuhai, China
- 4 Population Health Sciences, Virginia Tech, Blacksburg, VA, USA
- 5 WorldPop, School of Geography and Environmental Science, University of Southampton, UK
- 6 School of Design and the Built Environment, Curtin University, Perth, 6101, Australia
- 7 Respiratory medicine department, Peking university third hospital, Beijing, P.R. China
- 8 School of Population Medicine and Public Health, Chinese Academy of Medical Sciences & Peking Union Medical College, Beijing, China
- 9 Divisions of Infectious Diseases, Chinese Center for Disease Control and Prevention, Beijing, China

\* Corresponding author

# These authors contributed equally to this work

### Abstract

Worldwide governments have rapidly deployed non-pharmaceutical interventions (NPIs) to mitigate the COVID-19 pandemic, together with the large-scale rollout of vaccines since late 2020. However, the effect of these individual NPI and vaccination measures across space and time has not been sufficiently explored. By the decay ratio in the suppression of COVID-19 infections, we investigated the performance of different NPIs across waves in 133 countries, and their integration with vaccine

rollouts in 63 countries as of 25 March 2021. The most effective NPIs were gathering restrictions (contributing 27.83% in the infection rate reductions), facial coverings (16.79%) and school closures (10.08%) in the first wave, and changed to facial coverings (30.04%), gathering restrictions (17.51%) and international travel restrictions (9.22%) in the second wave. The impact of NPIs had obvious spatiotemporal variations across countries by waves before vaccine rollouts, with facial coverings being one of the most effective measures consistently. Vaccinations had gradually contributed to the suppression of COVID-19 transmission, from 0.71% and 0.86% within 15 days and 30 days since Day 12 after vaccination, to 1.23% as of 25 March 2021, while NPIs still dominated the pandemic mitigation. Our findings have important implications for continued tailoring of integrated NPI or NPI-vaccination strategies against future COVID-19 waves or similar infectious diseases.

Key words: COVID-19, SARS-CoV-2, Non-pharmaceutical interventions, Vaccination, Effectiveness

## **Main**

As of 30 March 2021, the COVID-19 pandemic has spread worldwide, causing over 127 million confirmed cases and 2.8 million deaths<sup>1</sup>. Non-pharmaceutical interventions (NPIs) have been deployed across the world to curb the pandemic<sup>2</sup>. With the rollout of COVID-19 vaccine using different dosing and population targeting strategies<sup>3</sup>, robust vaccination programs will enable the relaxation of NPIs<sup>4,5</sup>. However, given the delays in vaccine production and the inequality of vaccine allocations as well as the emergence of novel variants<sup>6,7</sup>, NPIs should be maintained

to avoid further resurgences before herd immunity can be achieved<sup>4</sup>. It is critical to understand the role of different NPIs and initial vaccination efforts to reduce COVID-19 transmission, before and after vaccine rollouts, thereby tailoring effective and integrated NPI-vaccination strategies for future COVID-19 waves.

The effectiveness of NPIs on pandemic mitigation had been shown by previous studies that mostly focused on the first wave of the pandemic before July 2020<sup>5,8-12</sup>, with limited analysis of subsequent waves, regional diversity and integrated NPI-vaccination efforts. The implementation of NPIs in the first wave had, to some degree, changed human knowledge and perceptions, behaviours and responses to mitigate the outbreaks<sup>13-17</sup>. Whether NPI effectiveness increases with adherence or decreases with fatigue in the subsequent waves remains unclear. Additionally, the effects of NPIs may vary across countries with different country characteristics, such as health capacity, residential population density, aging ratio, humidity and air temperature<sup>18,19</sup>. The potential differences in NPI effectiveness across continents are rarely discussed in existing global analyses<sup>12</sup>. Moreover, vaccination is the most promising approach to lead the way out from this pandemic. However, the uneven distribution and allocation of vaccine rollout among countries and population groups might hinder the way to herd immunity<sup>20</sup>. Modelling studies have been conducted to simulate the combining effects of vaccination and NPIs for COVID-19 under various scenarios<sup>5,21,22</sup>. However, it is critically needed to understand how vaccination integrated with NPIs reduces COVID-19 transmission in the real world since the rollout of vaccines across multiple nations.

In this study we estimated the effects of individual NPIs and vaccination by identifying their contributions to the decay ratio of COVID-19 infections across waves and countries after the implementation of these measures. We used databases

of global comparable outcomes, covering epidemiological<sup>23</sup>, intervention policy<sup>24</sup>, environmental, and demographic data in 133 countries, territories and areas, from the earliest available dates to 25 March 2021. The deployment time and intensity of seven NPIs, including school closures, workplace closures, gathering restrictions, domestic movement restrictions, public transport closures, international travel restrictions, and facial coverings, were considered in the data processing. We defined epidemic waves, mainly focusing on the first and second waves, according to the daily number of new confirmed cases reported and the changing pandemic situations in corresponding countries (see Methods and supplementary information [SI]). We also divided the 133 territories into four country groups, according to their geographical proximity, morbidity and mortality, implicitly related testing rate, to compare the regional variations in NPI efficacy. Data on vaccine rollouts in 63 countries from 8 December 2020 to 25 March 2021 were also collated to assess the integrated impact of vaccination and non-pharmaceutical policy on COVID-19. More details can be found in Methods and SI.

### **Spatiotemporal Bayesian inference model to assess effects of NPIs and vaccination**

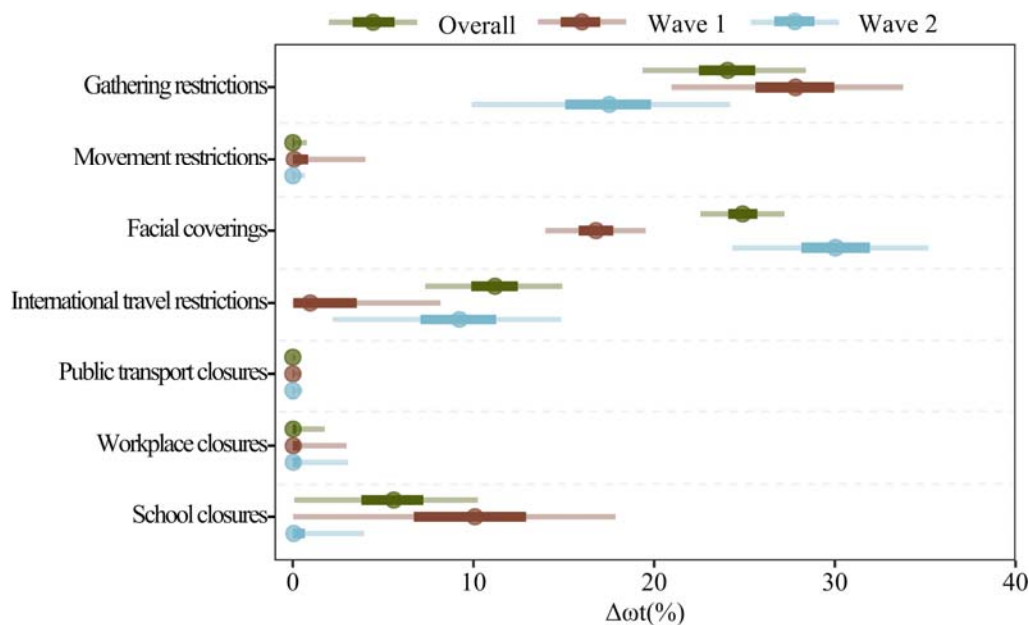
A Bayesian inference model<sup>10,15</sup> was built to disentangle the individual effects of NPIs and vaccination by measuring their relative contributions on the decay ratio of COVID-19 infections (denoted as  $\% \Delta \omega_t$ ), in the presence, absence and intensity change of these interventions. The decay ratio was defined as a percentage of reduction in the baseline growth rate by the instantaneous growth rate. In addition to interventions, there were many other factors (e.g., the transmissibility of new variants and the variation of case diagnosis and reporting) that might affect the transmission of COVID-19 over time. Therefore, the baseline growth rates in different waves and

countries were assumed as the mean of the top three highest instantaneous, weekly growth rates in the corresponding wave and country. The instantaneous growth rate of transmission at each point of time was calculated as the current weekly number of new infections over the infections in the previous week. We used the decay ratio directly derived from the reported case data, rather than the reproduction number ( $Rt$ )<sup>10,12</sup>, to avoid introducing the uncertainty of estimating  $Rt$  over time<sup>25</sup>. It should be noted that we estimated the relative effects of individual measures, while their combined effectiveness should be higher than individual effects, but not linearly accumulated (see Method).

We modelled NPI effects over time without assuming a functional relationship between effectiveness over time, which allows for variable community responses to the variation of each intervention. The effects of each NPI and vaccination with same intensity were assumed to be constant across countries in our model for each single estimation, and then decomposed for each country and week according to the corresponding decay ratio, intervention timing and intensity. The NPI with different intensities was modelled by the same effect parameter. The spatial variations in NPI and vaccination effectiveness across countries were controlled by employing the country-specific characteristics, including health capacity, residential population density, aging ratio, humidity and air temperature. All the estimations were performed by Markov chain Monte Carlo (MCMC). The reliability of our model was assessed by the cross-validation for overall intervention effects. Sensitivity analyses were also performed to assess model robustness in terms of our assumptions. More details on models and covariates can be found in Methods and SI.

### **Global impact of individual NPIs across waves**

We estimated that three NPIs had substantial effects (>10%) on mitigating COVID-19 transmission in general (Fig. 1), including facial coverings (median 24.93%, interquartile range [IQR] 24.10 - 25.75%), gathering restrictions (24.01%, 22.38 - 25.65%) and international travel restrictions (11.23%, 9.93 - 12.56%). The effect of school closures (5.53%, 3.60 - 7.23%) performed moderately (1 - 10%) among all the seven NPIs, whereas workplace closures, public transport closures and movement restrictions had limited efficacy (< 1%).



**Fig. 1. Effects of individual NPIs on reducing the transmission of COVID-19 across waves within our data context.** The overall effect represents the average performance of NPIs against COVID-19 in 133 countries (Fig. 2) by 25 March 2021 or the last dates before vaccination. Wave 1 refers to the average performance of NPIs against COVID-19 in the first wave of the 133 countries. The specific period of the first wave in each of 133 countries is not the same, indicating Wave 1 does not refer to a particular time but the general period of the first outbreak. Wave 2 refers to the effects in the second wave.  $\% \Delta \omega_t$  represents the decay ratio in the COVID-19 infection rate in 133 studied countries, territories and areas. The 5th, 25th (Q1), 50th (median), 75th (Q3), and 95th percentiles of estimates are presented, respectively. The uncertainty intervals of NPI effectiveness refer to the variance over the corresponding data context.

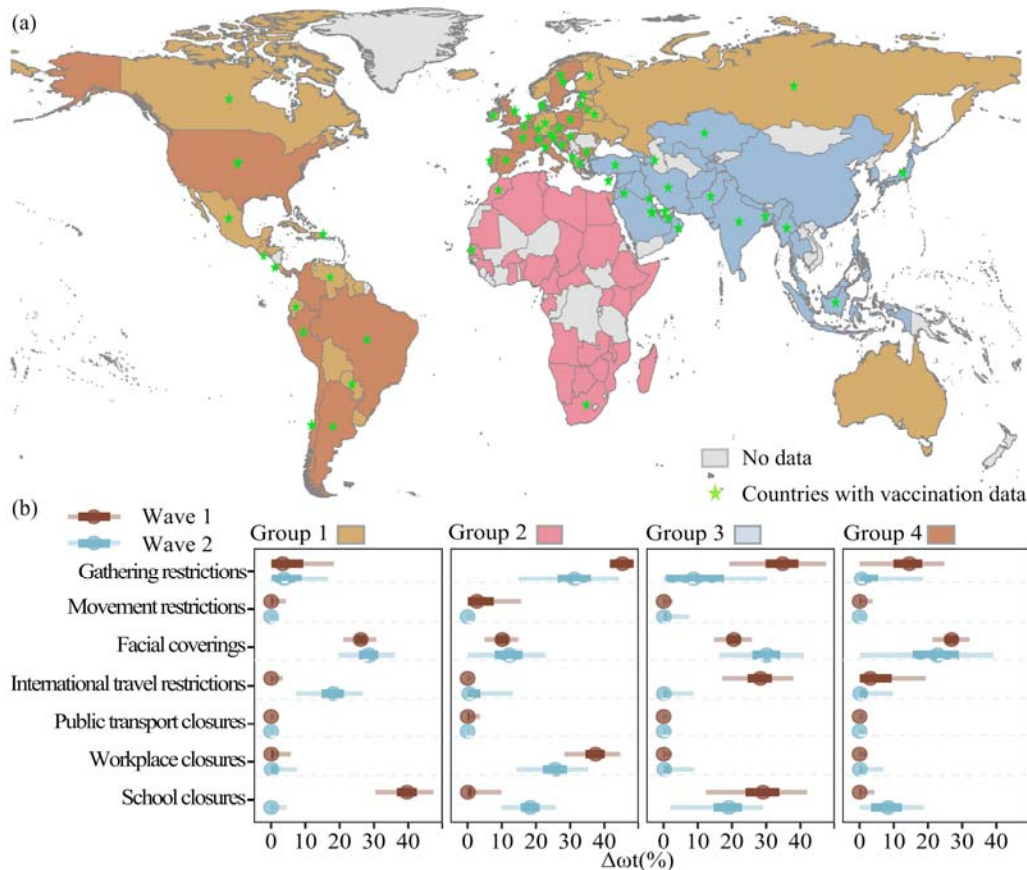
The efficacy of NPIs varied across waves. In the first wave, the most effective NPIs were gathering restrictions (median 27.83%, IQR 25.60 - 29.97%), facial coverings (16.78%, 15.82 - 17.74%), and school closures (10.08%, 6.70 - 12.91%). In the second wave, the efficacy of facial coverings surged to be the top-ranked one (30.04%, 28.14 - 31.94%). Another significant rise is the effect of international travel restrictions, from limited in Wave 1 (0.96%, 0.03 - 3.55%) to moderate in Wave 2 (9.22%, 7.07 - 11.25%). Meanwhile, the effects of gathering restrictions and school closures declined to 17.51% (IQR 15.08 - 19.82%) and 0.06% (0.00 - 0.67%) in the second wave, respectively. In both waves, workplace closures, public transport restrictions and movement restrictions presented limited effects (< 5%) in reducing the transmission.

### **Effectiveness of NPIs across countries by wave**

Our analyses also revealed that the impact of individual non-pharmaceutical measures had obvious spatiotemporal variations across countries by waves before vaccine rollouts (Fig. 2). NPIs effectiveness varied largely over time and reached highest efficacy against COVID-19 infections with different time lags (SI Fig. C6).

The countries in Group 1 and Group 2 were predominantly comprised of European, American, and Oceanian countries with relatively low and high morbidity and mortality, respectively. Facial coverings had an important role in reducing transmission in both groups and waves ( $\% \Delta \omega_t > 10\%$ ). Gathering restrictions and workplace closures had substantial effects in both waves in Group 2, but only played moderate and limited roles, respectively, in Group 1 for both waves. School closures were the most effective NPI in the first wave in Group 1 (39.65%, 36.67 - 42.50%) but had limited effects in the second wave (0.03%, 0.00 - 0.50%). The opposite happened in Group 2, from 0.10% (0.00 - 1.19%) in Wave 1 to 18.36% (15.54 -

21.09%) in Wave 2. International travel restrictions and movement restrictions solely affected the pandemic transmission of Group 1 in the second wave (18.15%, 14.68 - 21.25%) and Group 2 in the first wave (2.74%, 0.10 - 7.67%), respectively. In other cases, their influences were limited. The effectiveness of public transport closures was below 1% in both groups among both waves.



**Fig. 2. The detailed cross-wave and -group effects of individual NPIs.** (a) Country groupings, as determined by pandemic parameters and geographic proximity (see SI for more information). Countries with vaccination data in this study are marked by the green stars. (b) Effects of individual NPIs on reducing the transmission of COVID-19 across waves and groups.  $\% \Delta \omega_t$  represents the decay ratio in COVID-19 infection rate. The 5th, 25th (Q1), 50th (median), 75th (Q3), and 95th percentiles of estimates are presented, respectively. The uncertainty intervals of NPI effectiveness refer to the variance over the corresponding spatiotemporal extent. A full list of countries and the corresponding time frames of different waves for each group can be found in SI Table E1 - E4.



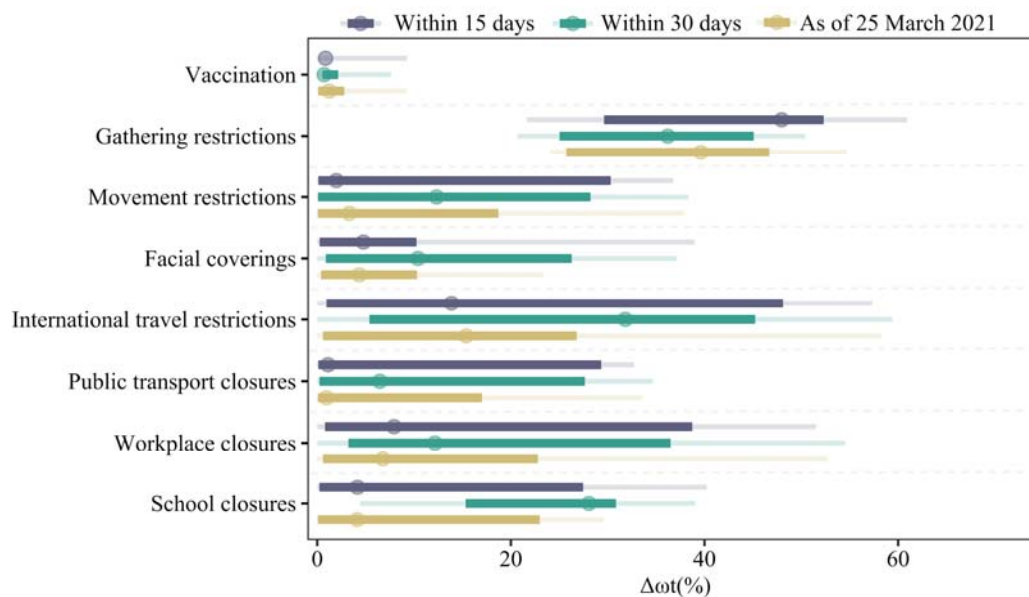
Asian countries formed Group 3. Facial coverings and school closes had substantial impacts in both waves. The former's effect increased from 20.53% (IQR 18.58 - 22.40%) to 30.13% (25.94 - 34.13%), while the latter declined from 29.08% (23.94 - 33.88%) to 19.06% (14.55 - 22.95%). The other two effective, with declined effectiveness, NPIs were gathering restrictions (from 34.80% to 8.78%) and international travel controls (from 28.13% to 0.10%). Workplace closures, public transport closures and movement restrictions were limited effective in both waves.

Group 4 countries included mostly African countries, whose effective NPIs were similar to Group 1 and Group 3. Facial coverings were the only NPIs that had substantial effectiveness among both waves ((26.86%, 24.98 - 31.79) and (22.84%, 15.51 - 29.06%)). Gathering restrictions (15.58%, 9.91 - 18.35%) and international travel restrictions (3.11%, 0.08 - 9.42%) prevented the COVID-19 transmission in the first wave, while school closures (8.35%, 3.32 - 12.39%) showed moderate effects in Wave 2. The remaining three NPIs, including workplace closures, public transport closures, and movement restrictions had limited effects (< 1%) in both waves.

### **Effect of integrated COVID-19 vaccination and NPIs**

We compared the effects of vaccination and NPIs after the first-dose vaccination in corresponding countries as of 25 March 2021, showing the individual and combined impact of vaccination with NPIs in 63 countries (Fig. 2(a), listed in SI Table A2). Our results showed the rollout of vaccines has contributed to the mitigation of COVID-19 transmission. With the increasing total vaccinated populations over time, the effect of COVID-19 vaccination was cumulatively rising. The induced antibody response and immunity may sufficiently prevent COVID-19 infections since Day 12 after receiving the first-dose vaccine (23). The early impact of vaccination on reducing infections was only 0.71% (IQR 0.02 - 2.84%) within 15 days since Day 12 after vaccination,

but the accumulative effectiveness slightly rose to 0.86% (0.57 - 3.26%) within 30 days since Day 12 after vaccination, and 1.23% (0.09 - 2.8%) by 25 March 2021. However, NPIs remained important and predominant for mitigating COVID-19 pandemic at the early stage of the vaccination era before most populations were infected or effectively vaccinated. In these countries with vaccine rollouts, as of 25 March 2021, gathering restrictions contributed to 39.62% (IQR 25.73 - 46.70%) of the suppression in infections, followed by international travel restrictions 15.38% (0.59 - 26.81%) and workplace closure 6.78% (0.58 - 22.79%) (Fig. 3). With respect to the country - Israel - with the highest vaccinated population (53.14%), as of 25 March 2021, the effectiveness of vaccination had contributed to 8.62% (7.06 - 13.8%) in reducing COVID-19 transmission, for the time being.



**Fig. 3 Impact of integrated NPIs and the vaccination on COVID-19 transmission.** represents the decay ratio in the suppression of COVID-19 infection rate. For 63 countries with vaccination data, effects of NPIs and the vaccination were evaluated for three periods, within 15 days and 30 days since Day 12 after vaccination and by 25 March 2021, as the induced antibody response and immunity may sufficiently prevent COVID-19 infections since Day 12 after receiving the first-dose vaccine (23). The uncertainty intervals of NPIs and vaccination effectiveness refer to the variance over the corresponding period in the 63 countries.

## Discussion

Based on longitudinal public health interventions and socio-demographic datasets across COVID-19 waves, our study revealed that NPI measures played important roles in mitigating the pandemic, with varied effects across waves and regions. The most effective NPIs were gathering restrictions, facial coverings and school closing in the first wave, which switched to facial coverings, gathering restrictions and international travel restrictions in the second wave. The effectiveness of facial coverings was statistically significant in both waves of four groups. Since the vaccine rollout, vaccinations have gradually contributed to the suppression of COVID-19 transmission, but NPIs still dominated the pandemic mitigation as of 25 March 2021. Our results presented NPI effectiveness along both spatial and temporal scales, and this study was the first impact assessment of integrating worldwide COVID-19 interventions and the vaccination in the real world, to our knowledge. These findings are crucial for continued tailoring and implementation of NPI strategies to mitigate COVID-19 transmission among future waves (e.g., as a result of new variants) or similar emerging infectious diseases, such as pandemic influenza.

Preliminary data showed vaccines could significantly reduce the severity of infections in older people<sup>26</sup>, and our results also showed that vaccines have an increasing effect to reduce SARS-CoV-2 transmission in the whole population, while vaccination alone was still insufficient to fully contain the coronavirus spread, for the time being, considering the vaccinated population ratio in most countries below 10% by 25 March 2021. Mass vaccination is needed to confer broad protection to the coronavirus, through reducing the unevenness of vaccine distribution among regions and groups<sup>20</sup>. However, the efficacy of vaccines and herd immunity might be

undermined due to the emergence of new variants of SARS-CoV-2, the wane of infection-associated immunity over time, and the changing attitudes and behaviours on vaccination, even with vaccine roll-out in full force<sup>20</sup>. Therefore, it is necessary to maintain the implementation of target and effective NPIs and closely monitor the changing efficacy of NPIs and vaccines across waves and countries for local intervention design.

We found that gathering restrictions and facial coverings significantly changed the pandemic trajectory in both waves, and gathering restrictions include both gathering cancellation<sup>27</sup> and closure of non-essential businesses<sup>28-30</sup>. The significant effects of these measures might be due to the virus most commonly spread through droplets or aerosols among people who were in close contact<sup>31</sup>. In contrast, public transport closures, movement restrictions, and workplace closures presented limited or moderate effects in both waves. Travel patterns have been significantly affected by the pandemic, causing a reduction in public transport usage<sup>32</sup>. Besides, facial coverings on public transport were required by numerous governments, which might reduce the risks of infection<sup>33</sup>. The decreasing usage of public transit and increasing personal protection measures might jointly explain the minor impact of public transport closures in both waves. The effect of movement restrictions contributed by both stay-at-home orders and internal movement restrictions in our study. The impact of movement restrictions, especially lockdowns, varied across previous studies, ranging from little effect<sup>34</sup> to as much as an 80% reduction in  $R_t$ <sup>10</sup>. Because lockdowns inherently encompass all other NPIs by definition, this might pose a problem for determining efficacy among NPI strategies alone<sup>31</sup>. Our study might underestimate the impact of movement restrictions and workplace closures due to

differences in the timing, intensity, and combination of interventions (SI Fig. C2 – C3).

The effectiveness of school closures and international travel restrictions fluctuated in the two waves. School closures played an important role in the first wave epidemic mitigation, but not in the second one. School holidays were identified and corresponded to the highest intensity of school closing in both waves. In the second wave, education was primarily guaranteed in many countries like the United Kingdom and other European countries. Besides, health safety measures, including facial coverings and social distancing, were introduced by schools to adhere to. Due to the protection of other intervention measures, school closures might be avoided in the following waves of the pandemic. Contrary to the school closures, international travel restrictions had a relatively minor effect in the first wave but seemed important in the second wave (Fig. 1). Countries that quickly placed border controls might have reduced the seeding of the coronavirus between countries, but international travel restrictions cannot prevent local transmission at the community level in countries where the virus had already been introduced<sup>35,36</sup>. Previous models suggest that unless community-level transmission is reduced by no less than 50%, a reduction in 90% of international travel to and from epidemic centres might only modestly affect the epidemic trajectory<sup>37</sup>. The small effect of international travel restrictions in the first wave might be explained by the late implementation of this measure across countries. The increasing role of international travel restrictions observed in this study might be also due to increasing control efforts at community level which occurred during the second wave.

After controlling for local contextual confounders in our models, we observed variations in the efficacy of interventions across regions. In this study, we divided 133

countries into four groups based on mortality and morbidity, implicitly related to testing rate. The testing rate was highly correlated with the mortality and morbidity (see SI Table C1). Regardless, socio-economic, cultural and political characteristics could also affect the implementation and effectiveness of NPIs locally<sup>31</sup>. For example, workplace closures and gathering restrictions might have been implemented more thoroughly in countries with high morbidity and mortality such as Group 2, thereby increasing their efficacy as compared to countries in Group 1. Here we presented the overall trend of the group, not excluding individual countries such as the United States that had fragmented approaches and no NPIs were implemented very effectively (at least from the policy level).

We acknowledge that there are limitations in our analysis. First, we derived the instantaneous growth rate of COVID-19 infections from the official reported cases, which might surge systematically with the increase of test capacity. To avoid the uncertainty introduced by varying test capacity, in addition to the overall effects of NPIs, we also evaluated the weekly NPIs effectiveness corresponding to the test capacity in every week (SI Fig. C6). Regardless, fluctuations in NPI effects over time probably also reflect the NPIs intensity. Second, we mainly focused on the comparison of NPIs for the first and second waves, as only a small number of countries had experienced the third wave by 25 March 2021 and the most recent wave might involve NPIs together with vaccination. To evaluate the pure effects of NPIs independent of vaccination, we excluded the dates with vaccination in the first and second waves. However, the preliminary results of NPI effects in the third wave for a small group of countries are also provided in SI. Third, it should be noted that our study might have underestimated the effectiveness of the vaccination, as we only examined the initial, short-term effect of the first-dose vaccines as of 25 March, but

vaccine and infection-induced immunity among populations could last longer, with accumulated long-term effects for reducing transmission. Additionally, some countries/populations have had the second-dose vaccine rollout, which was not estimated in our study, though the proportion of people vaccinated with two doses might be still low. Fourth, our data-driven model cannot reveal the interaction dynamics between NPIs, where the individual estimations cannot be causally inferred from other evaluations.

Overall, the disclosure of epidemic, publicized responses and the COVID-19 vaccination data allows us to estimate and compare the cross-wave effects of public health measures at both global and regional scales. Our work provides a quantitative basis and approach to explore historic spatial-temporal heterogeneity in the effectiveness of individual NPIs, integrating vaccinations. The continued pandemic burden across the globe and the non-decisive efficacy of the vaccination suggests the NPI implementation continues to be a priority for many countries, even with a full force vaccine rollout in the early stage of the vaccination era<sup>5,20,38</sup>.

## Methods

### *Data sources and processing*

**Epidemiological data.** The daily number of confirmed cases reported by country were obtained from the COVID-19 Data Repository by the Center for Systems Science and Engineering (CSSE) at Johns Hopkins University (JHU)<sup>23</sup>. To remove the influence of outliers and the fluctuation caused by the day-of-week effect, we smoothed daily case counts with the Gaussian kernel and adjusted them for the infection-to-confirmation reporting delay then. First, we set all negative case numbers to zero, as negative values in cases could sometimes appear when a country corrected historical data, because it had previously overestimated the number of cases<sup>39</sup>. Second, we smoothed case data by calculating the rolling average using a Gaussian window with a standard deviation of 2 days, truncated at a maximum window of 15 days<sup>27</sup>. Third, we adjusted the reporting data by subtracting 12 days<sup>15</sup> from the reporting date in the first wave, accounting for the delay from infection to reporting. With respect to the second, even the third, wave, we slightly reduced the reporting delay to 10 days because of the potential increasing testing and diagnosis capacity. Sensitivity analyses were also conducted to assess the impact of different reporting delays on our estimates (see sensitivity analysis section in Methods).

**Intervention policy data.** We generated seven non-pharmaceutical measures from the nine NPIs (i.e. school closures, workplace closures, public events cancellations, gathering restrictions, public transport closures, stay-at-home orders, internal movement restrictions, international travel restrictions, and facial coverings), collated by the Oxford COVID-19 Government Response Tracker (OxCGRT)<sup>24</sup>. The intensity of the nine considered NPIs policies is scaled into discrete values between 0 to 1,



where 0 represents an absence of the NPI and 1 represents the corresponding maximum intensity. The intensity of school closures is corrected as 1 during public and school holidays<sup>40</sup>. We processed public events cancellations and gathering restrictions into a single NPI (i.e., gathering restrictions) for each country in each day by their mean intensity, as the two NPIs documented in OxCGRT were highly collinear in terms of their timing and intensity of implementation across the 133 study countries. We also integrated stay-at-home orders and internal movement restrictions into movement restrictions for the same reason in the same way for each country.

**Vaccination data.** The COVID-19 vaccination data used in this study was obtained from the *Our World in Data*<sup>41</sup>. They regularly updated the first and second doses administered and daily vaccination rates at national scale from official sources in 93 countries as of 25 March 2021. We analysed the vaccination effect in 63 countries whose highest daily confirmed cases exceeded 100. The induced antibody response and immunity might sufficiently prevent SARS-CoV-2 infections since Day 12 after receiving the first dose<sup>42</sup>. Therefore, we adjusted the vaccination rates for the first dose administered to be rolled forward for 12 days, to account for the delay from vaccination to the generation of sufficient protective immunity.

**Environmental and demographic covariates.** To control for country-specific confounders in the estimates of intervention effectiveness varied across countries, we also assembled population density, aging ratio, health capacity index, air temperature, and humidity for all these 133 study countries. Within each country, population density (per square kilometre) was the ratio of the total population over the corresponding built-up area in 2014<sup>43</sup>. The total and age-grouping population data in

2019 were obtained from the United Nations to calculate the aging ratio (> 65 year old) among populations<sup>44</sup>. Health capacity index was the arithmetic average of the five indices, including i) prevent, ii) detect, iii) respond, iv) enabling function, and v) operational readiness, developed to characterize the health security capacities in the context of the COVID-19 outbreak<sup>45</sup>. Air temperature and humidity were derived from the Global Land Data Assimilation System<sup>46</sup>.

To further remove the day-of-week effect among case testing, diagnosis, and data reporting, all data used in this study were assembled and aggregated into a weekly dataset. The correlations between each two covariates were given to show their collinearity. The studied countries were selected by being documented in every dataset of epidemiological data, intervention policy data and environmental and demographic covariates. The details of data collection and processing are further provided in the Supplementary Information.

### ***Defining waves and country groups***

**Waves.** The inequality in pandemic development across worldwide countries has led some countries to confront more than one COVID-19 wave<sup>47,48</sup>. Based on the smoothed daily case data, we defined an epidemic wave in each country as below. In a period of three or more consecutive weeks for a country, if the daily numbers of cases in this period all exceeded 5% of the maximum daily number of cases in 2020 in this country, these weeks were considered to constitute an epidemic wave. The first and last days of the period were the start and end of the corresponding wave, respectively. However, considering that the first wave of this pandemic in most countries started from low-level community transmission caused by imported cases,

we adjusted the start date of the first wave to the first date: i) when the number of daily cases exceeded 10 cases, for countries where the maximum number of daily new cases in the first wave were less than or equal to 300 cases; or ii) when the number of daily cases exceeded 20 cases, for other countries where their maximum daily cases in the first wave were greater than 300 cases. The details and full lists of waves by country can be found in SI. We focused on the first and second waves in the main text, and the results of the third waves that were only identified in a few countries are provided in SI.

**Regional stratification.** The reported COVID-19 morbidity and mortality could vary substantially in the study countries, based on the released epidemiological data. We investigated the spatial heterogeneity in NPIs effectiveness by dividing 133 countries into four country groups based on their morbidity, mortality and geographical proximity. Among the four groups, the grading thresholds for high morbidity and mortality were determined according to the principle of "small variance within groups and large variance between groups"<sup>49,50</sup>. Thresholds of 1800 per 100,000 persons for morbidity and 40 per 100,000 persons for mortality were chosen to select countries with both high morbidity and high mortality. Considering the geographical proximity between countries, Asian countries and African countries were assigned into two separate groups. A full list of countries in each group and the corresponding time frame of different waves of COVID-19 can be found in SI Table C1 - C4.

### ***Model description***

**Transmission dynamics.** The evolution of the COVID-19 in a society can be characterized by  $\frac{dI}{dt} = \omega_t I_t$ , where  $I$  represents the new cases, and  $\omega_t$  is the

instantaneous growth rate. We adopted a general linear formula<sup>9,10,35</sup> linking NPIs to the pandemic evolution. That is,

$$\omega_t = \omega_0 \exp(-\tau_t v_t) \prod_{i=1}^n \exp(-\alpha_{i,t} x_{i,t}) \prod_{j=1}^m \exp(-\beta_{j,t} y_{j,t}) + \varepsilon_t, \quad \#(1)$$

where  $\omega_0$  represents the baseline growth rate without interventions.  $\alpha_{i,t}$  is the correlation between  $\omega_0$  and  $\omega_t$  in terms of NPIs policy  $x_{i,t}$  (visualized in SI Fig A3) on day  $t$ , and  $n$  is the number of NPIs.  $\beta_{j,t}$  is the correlation between  $\omega_0$  and  $\omega_t$  in terms of sociodemographic factors  $y_{j,t}$ , and  $m$  is the number of control variables.  $\tau_t$  is the correlation between  $\omega_0$  and  $\omega_t$  in terms of vaccination  $v_t$ , and  $\varepsilon_t$  is the error term representing the uncertainty of decay ratio at day  $t$ . The effect of NPI  $x_i$  in a period, such as the first wave of the pandemic, can be interpreted as a decay ratio in  $\omega_0$  by computing  $e_i = 1 - \exp(-\alpha_i \bar{x}_i)$ , where  $\alpha_i$  is the effect parameter and  $\bar{x}_i$  is the average intensity of the NPI during that period. The highest effect of NPIs is 1, representing that the transmission is fully contained or interrupted. In contrast, the effect of vaccination is calculated by  $1 - \exp(-\tau \max(v_t))$ , ranged from 0 to 1 also with 1 representing that the transmission is fully contained or interrupted by vaccination. It should be noted that the combined NPIs effectiveness on day  $t$  should be calculated as  $1 - \exp(-\sum_i \alpha_i x_{i,t}) = 1 - \prod_i (1 - e_i)$ , instead of the sum of individual NPI effects.

**Assessing the effects of interventions.** We used the spatiotemporal Bayesian inference model to evaluate the effect parameters in Eq. (1) based on the observed real-time COVID-19 growth, identifying the relative NPIs and vaccination effectiveness. We assumed that the effects of NPIs on  $\omega_t$  change across waves and country groups, but relatively stable for countries within the same group. The

differences in NPIs effectiveness across country groups were assumed to be too large to be controlled by sociodemographic factors. We first evaluated the overall effectiveness of NPIs before the vaccination era. In addition to the overall NPIs effectiveness, we also evaluated respective NPIs effects in the first and second waves for each country group separately to show the potential large spatiotemporal diversity. For vaccination, we evaluated NPIs and vaccination effects for 63 countries regardless of their country groups. We also evaluated vaccination effects within different time periods after vaccinations as of 25 March 2021 to show cumulative effects of vaccine rollouts over time.

We aimed to compare relative effectiveness of COVID-19 interventions across countries and across waves. Specifically, the effect parameters were all pre-defined to have a gamma distribution<sup>9</sup> in spite of NPIs, sociodemographic factors and vaccination. Then, we placed 80% of their probability mass on positive effects for both NPIs and vaccination by left shifting their probability distributions with certain values<sup>10</sup>. While we put no information on effectiveness of sociodemographic factors, i.e., placing 50% of their probability mass on positive effects. Under the circumstance, NPIs and vaccination were more likely to contain the pandemic, while the state-variable effects were unknown. The baseline growth rate ( $\omega_0$ ) was defined as the mean of the top three highest growth rates of the confirmed COVID-19 new cases in the corresponding wave. The instantaneous transmission interval ( $1/\omega_t$ ) in the following weeks was assumed to have a gamma distribution also.

**Model validation.** The reliability of our models and corresponding results were evaluated by the leave-forty-countries-out cross validation. We first calibrated our

model using 93 randomly selected countries to estimate the overall NPIs effects in both the first and second waves. Then, we derived the instantaneous growth rates through the estimated NPIs overall effects for the remaining 40 countries in terms of their implemented NPIs. We used mean square error, ranging from 0 to infinite with 0 represents the perfect prediction ability, to assess the difference between the predicted instantaneous growth rates and the corresponding empirical instantaneous growth rates. We repeated this procedure 50 times, where the average mean square error was 1.01.

**Sensitivity analysis.** The robustness of models and parameters used in the study was also assessed by a series of sensitivity analyses. The parameters to be assessed included: i) the probability mass of NPIs and vaccination on negative effectiveness; ii) the probability mass of sociodemographic factors on negative effectiveness; and iii) the infection-to-report delay in the first wave ( $t_1$ ) and the second wave ( $t_2$ ). In this study, the default values for these parameters were 20%, 50% and  $t_1=12$  and  $t_2=10$ , respectively. The comparison of parameter impacts on estimates were listed in SI Table B2, representing three scenarios with smaller and larger default parameter settings. The differences of NPI effects among three waves were tested using a Wilcoxon signed-rank test, a non-parametric statistical hypothesis test for comparing NPIs effects between pairs of the three waves. Moreover, we repeated the estimations twice for NPIs effectiveness with default setting, except for the initial full infection rate, as the highest growth rate and the mean of the top five highest growth rates, respectively, of the confirmed COVID-19 new cases in the corresponding wave.

Using an R package, rstan<sup>51</sup>, this model infers posterior distributions of each NPI effectiveness with the Markov chain Monte Carlo (MCMC) sampling algorithm. To analyse the extent to which modelling assumptions affect the results, our sensitivity analyses included epidemiological parameters, prior distributions, and the structural assumptions introduced above. MCMC convergence statistics are shown in SI Fig. B4 - B5.

### **Data and code availability**

All source code and data necessary for the replication of our results and figures are available at: [https://github.com/wx11379457192/NPIs\\_code](https://github.com/wx11379457192/NPIs_code)

### **Acknowledgments**

This study was supported by the National Natural Science Foundation for Distinguished Young Scholars of China (No. 41725006), the National Natural Science Foundation of China (81773498), the Bill & Melinda Gates Foundation (INV-024911 and OPP1134076), and Beijing Natural Science Foundation (Grant No.7212128).

### **Author contributions**

YG, WBZ, HYL, WY, CWR and SJL conceived and designed the study, built the model, collected data, finalised the analysis, interpreted the findings, and wrote the manuscript. MGH, XLW, YZS and MXL collected data, interpreted the findings, and revised drafts of the manuscript. NWR, LF, ZJL, WZY and AJT interpreted the findings, and commented on and revised drafts of the manuscript. All authors read and approved the final manuscript.

## **Ethical approval**

Ethical clearance for collecting and using secondary data in this study was granted by the institutional review board of the University of Southampton (No. 61865). All data were supplied and analysed in an anonymous format, without access to personal identifying information.

## **Role of the funding source**

The funder of the study had no role in study design, data collection, data analysis, data interpretation, or writing of the report. The corresponding authors had full access to all the data in the study and had final responsibility for the decision to submit for publication. The views expressed in this article are those of the authors and do not represent any official policy.

## **Competing interests**

The authors declare no competing interests.

## **Reference**

- 1 World Health Organization. WHO Coronavirus (COVID-19) Dashboard. <https://covid19.who.int>. (2021)
- 2 Perra, N. Non-pharmaceutical interventions during the COVID-19 pandemic: A review. *Physics Reports* (2021).
- 3 Saad-Roy, C. M. *et al.* Epidemiological and evolutionary considerations of SARS-CoV-2 vaccine dosing regimes. *Science* (2021).
- 4 ECDC. Integrated COVID-19 response in the vaccination era. (2021).
- 5 Huang, B., Wang, J., Cai, J., Yao, S. & Lai, S. Integrated vaccination and physical distancing interventions to prevent future COVID-19 waves in Chinese cities. *Nat. Hum. Behav.*, 1-11 (2021).
- 6 Lai, S., Floyd, J. & Tatem, A. Preliminary risk analysis of the spread of new COVID-19 variants from the UK, South Africa and Brazil. (2021).
- 7 Kupferschmidt, K. Viral mutations may cause another ‘very, very bad’ COVID-19 wave, scientists warn. *Science* (2021).
- 8 Baker, R. E., Yang, W., Vecchi, G. A., Metcalf, C. & Grenfell, B. T. Assessing the influence of climate on wintertime SARS-CoV-2 outbreaks. *Nature*



- Communications* **12** (2021).
- 9 Lai, S., Ruktanonchai, N. W., Zhou, L., Prosper, O. & Tatem, A. J. Effect of non-pharmaceutical interventions to contain COVID-19 in China. *Nature*, 1-7 (2020).
- 10 Flaxman, S., Mishra, S., Gandy, A., Unwin, H. & Walker, P. G. Estimating the effects of non-pharmaceutical interventions on COVID-19 in Europe. *Nature* (2020).
- 11 Tian, H. *et al.* An investigation of transmission control measures during the first 50 days of the COVID-19 epidemic in China. *Science* (2020).
- 12 Li, Y. *et al.* The temporal association of introducing and lifting non-pharmaceutical interventions with the time-varying reproduction number (R) of SARS-CoV-2: a modelling study across 131 countries. *The Lancet Infectious Diseases* **21**, 193-202 (2021).
- 13 Farooq, A., Laato, S. & Islam, A. Impact of Online Information on Self-Isolation Intention During the COVID-19 Pandemic: Cross-Sectional Study. *Journal of Medical Internet Research* **22** (2020).
- 14 Hu, Z., Lin, X., Kaminga, A. C. & Xu, H. Impact of the COVID-19 Epidemic on Lifestyle Behaviors and Their Association With Subjective Well-Being Among the General Population in Mainland China: Cross-Sectional Study. *Journal of Medical Internet Research* **22**.
- 15 Brauner, J. M. *et al.* Inferring the effectiveness of government interventions against COVID-19. *Science* **371** (2021).
- 16 Geldsetzer, P. Knowledge and perceptions of COVID-19 among the general public in the United States and the United Kingdom: a cross-sectional online survey. *Ann. Intern. Med.* **173**, 157-160 (2020).
- 17 Doogan, C., Buntine, W., Linger, H. & Brunt, S. Public Perceptions and Attitudes Towards COVID-19 Non-Pharmaceutical Interventions Across Six Countries: A Topic Modeling Analysis of Twitter Data (Preprint). *Journal of Medical Internet Research* **22** (2020).
- 18 Van Bavel, J. J. *et al.* Using social and behavioural science to support COVID-19 pandemic response. *Nat. Hum. Behav.* **4**, 460-471 (2020).
- 19 Hsiang, S. *et al.* The effect of large-scale anti-contagion policies on the COVID-19 pandemic. *Nature* **584**, 262-267 (2020).
- 20 Aschwanden, C. Five reasons why COVID herd immunity is probably impossible. *Nature* **591**, 520-522 (2021).
- 21 Moore, S., Hill, E. M., Tildesley, M. J., Dyson, L. & Keeling, M. J. Vaccination and non-pharmaceutical interventions for COVID-19: a mathematical modelling study. *The Lancet Infectious Diseases* (2021).
- 22 Patel, M. D. *et al.* The Joint Impact of COVID-19 Vaccination and Non-Pharmaceutical Interventions on Infections, Hospitalizations, and Mortality: An Agent-Based Simulation. Preprint at *medRxiv*, 2020.2012.2030.20248888.
- 23 Dong, E., Du, H. & Gardner, L. An interactive web-based dashboard to track COVID-19 in real time. *The Lancet infectious diseases* **20**, 533-534 (2020).
- 24 Hale, T. *et al.* A global panel database of pandemic policies (Oxford COVID-19 Government Response Tracker). *Nat. Hum. Behav.*, 1-10 (2021).
- 25 Pasetto, D., Lemaitre, J. C., Bertuzzo, E., Gatto, M. & Rinaldo, A. Range of reproduction number estimates for COVID-19 spread. *Biochemical and biophysical research communications* **538**, 253-258 (2021).
- 26 England, P. H. *New data show vaccines reduce severe COVID-19 in older adults*, [https://www.gov.uk/government/news/new-data-show-vaccines-](https://www.gov.uk/government/news/new-data-show-vaccines)

- reduce-severe-covid-19-in-older-adults (2021).
- 27 Haug, N. *et al.* Ranking the effectiveness of worldwide COVID-19 government interventions. *Nat. Hum. Behav.* **4**, 1303-1312 (2020).
- 28 Banholzer, N. *et al.* Impact of non-pharmaceutical interventions on documented cases of COVID-19. Preprint at <https://doi.org/10.1101/2020.04.16.20062141> (2020).
- 29 Xiao, Y. Predicting spatial and temporal responses to non-pharmaceutical interventions on COVID-19 growth rates across 58 counties in New York State: A prospective event-based modeling study on county-level sociological predictors. *JMIR public health and surveillance* (2020).
- 30 Aravindakshan, A., Boehnke, J., Gholami, E. & Nayak, A. Preparing for a future COVID-19 wave: insights and limitations from a data-driven evaluation of non-pharmaceutical interventions in Germany. *Sci. Rep.* **10**, 1-14 (2020).
- 31 Desai, A. N. & Patel, P. Stopping the Spread of COVID-19. *JAMA The Journal of the American Medical Association* **323** (2020).
- 32 Tirachini, A. & Cats, O. COVID-19 and public transportation: Current assessment, prospects, and research needs. *Journal of Public Transportation* **22**, 1 (2020).
- 33 Gostin, L. O., Cohen, I. G. & Koplan, J. P. Universal masking in the United States: The role of mandates, health education, and the CDC. *JAMA* **324**, 837-838 (2020).
- 34 Askitas, N., Tatsiramos, K. & Verheyden, B. Lockdown strategies, mobility patterns and covid-19. Preprint at *arXiv:2006.00531* (2020).
- 35 Russell, T. W. *et al.* Effect of internationally imported cases on internal spread of COVID-19: a mathematical modelling study. *The Lancet Public Health* **6**, e12-e20 (2021).
- 36 Wells, C. R. *et al.* Impact of international travel and border control measures on the global spread of the novel 2019 coronavirus outbreak. *Proceedings of the National Academy of Sciences* **117**, 7504-7509 (2020).
- 37 Chinazzi, M. *et al.* The effect of travel restrictions on the spread of the 2019 novel coronavirus (COVID-19) outbreak. *Science* **368**, 395-400 (2020).
- 38 Nouvellet, P. *et al.* Reduction in mobility and COVID-19 transmission. *Nature communications* **12**, 1-9 (2021).
- 39 Hasell, J. *et al.* A cross-country database of COVID-19 testing. *Sci. Data* **7**, 1-7 (2020).
- 40 Lai, S., Sorichetta, A. & Bondarenko, M. Global Public and School Holidays 2010-2019. (2020).
- 41 Hannah Ritchie, E. O.-O., Diana Beltekian, Edouard Mathieu, Joe Hasell, Bobbie Macdonald, Charlie Giattino, Cameron Appel and Max Roser. *Coronavirus (COVID-19) Vaccinations*, <https://ourworldindata.org/covid-vaccinations> (2021).
- 42 Polack, F. P. *et al.* Safety and efficacy of the BNT162b2 mRNA Covid-19 vaccine. *New England Journal of Medicine* **383**, 2603-2615 (2020).
- 43 Florczyk, A. J. *et al.* GHSL data package 2019. *Luxembourg, EUR* **29788**, 290498 (2019).
- 44 Nations, U. World population prospects 2019: highlights. *Department of Economic and Social Affairs, Population Division* (2019).
- 45 Kandel, N., Chungong, S., Omaar, A. & Xing, J. Health security capacities in the context of COVID-19 outbreak: an analysis of International Health Regulations annual report data from 182 countries. *The Lancet* **395**, 1047-

- 1053 (2020).
- 46 Rodell, M. *et al.* The global land data assimilation system. *Bull. Am. Meteorol. Soc.* **85**, 381-394 (2004).
- 47 Kuehn, B. M. Africa Succeeded Against COVID-19's First Wave, but the Second Wave Brings New Challenges. *JAMA* **325**, 327-328 (2021).
- 48 Aleta, A. *et al.* Modelling the impact of testing, contact tracing and household quarantine on second waves of COVID-19. *Nat. Hum. Behav.* **4**, 964-971 (2020).
- 49 Wang, J. & Xu, C. Geodetector: Principle and prospective. *Acta Geol Sin-Engl* (2017).
- 50 Wang, J. F., Zhang, T. L. & Fu, B. J. A measure of spatial stratified heterogeneity. *Ecological Indicators* **67**, 250-256 (2016).
- 51 Team, S. D. RStan: the R interface to Stan. *R package version 2*, 522 (2016).