

Autoantibodies stabilize neutrophil extracellular traps in COVID-19

Yu Zuo¹, Srilakshmi Yalavarthi¹, Sherwin Navaz¹, Claire Hoy¹, Hui Shi^{1,2}, Alyssa Harbaugh¹, Kelsey Gockman¹, Melanie Zuo³, Jacqueline A. Madison^{1,4}, Yogendra Kanthi^{5,6*}, and Jason S. Knight^{1*}

*Corresponding authors

Affiliations:

¹ Division of Rheumatology, Department of Internal Medicine, University of Michigan, Ann Arbor, Michigan, USA

² Division of Rheumatology, Ruijin Hospital, Shanghai Jiao Tong University School of Medicine, Shanghai, China

³ Division of Geriatric and Palliative Medicine, Department of Internal Medicine, University of Michigan, Ann Arbor, Michigan, USA

⁴ Division of Pediatric Rheumatology, Department of Pediatrics, University of Michigan, Ann Arbor, Michigan, USA

⁵ Division of Intramural Research National Heart, Lung and Blood Institute Bethesda, Maryland, USA

⁶ Division of Cardiovascular Medicine, Department of Internal Medicine, University of Michigan, Ann Arbor, Michigan, USA.

Correspondence:

Yogendra Kanthi, MD
yogen.kanthi@nih.gov

Jason S. Knight, MD, PhD
jsknight@umich.edu

Running title: Anti-NET antibodies in COVID-19

ABSTRACT

The release of neutrophil extracellular traps (**NETs**) by hyperactive neutrophils is recognized to play an important role in the thromboinflammatory milieu inherent to severe presentations of COVID-19. At the same time, a variety of functional autoantibodies have been observed in individuals with severe COVID-19 where they likely contribute to immunopathology. Here, we aimed to determine the extent to which autoantibodies might target NETs in COVID-19 and, if detected, to elucidate their potential functions and clinical associations. We measured global anti-NET activity in 171 individuals hospitalized with COVID-19 alongside 48 healthy controls. We found high anti-NET activity in the IgG and IgM fractions of approximately 40% and 50% of patients, respectively. There was a strong correlation between anti-NET IgG and anti-NET IgM, with high anti-NET antibody levels in general associating with circulating markers of NETs such as myeloperoxidase-DNA complexes and calprotectin. Clinically, anti-NET antibodies tracked with impaired oxygenation efficiency and elevated levels of circulating D-dimer. Furthermore, patients who required mechanical ventilation had higher levels of anti-NET antibodies than those who did not require oxygen supplementation. Mechanistically, anti-NET antibodies of the IgG isotype impaired the ability of DNases in healthy serum to degrade NETs. In summary, these data reveal high levels of anti-NET antibodies in individuals hospitalized with COVID-19, where they likely impair NET clearance and thereby potentiate SARS-CoV-2 mediated thromboinflammation.

INTRODUCTION

While it has been more than a year since the initial outbreak, coronavirus disease 2019 (**COVID-19**)—caused by the novel severe acute respiratory syndrome coronavirus 2 (**SARS-CoV-2**)—remains a global health challenge with alarming death tolls (1). Many survivors of COVID-19 continue to suffer from post-acute sequelae of the infection and the cause of these long-term symptoms remains unknown (2-4). Severe, acute COVID-19 is characterized by a thromboinflammatory state driven by a complex interplay between innate and adaptive immune responses (1). This state manifests clinically as acute respiratory distress syndrome, and, in some patients, widespread thrombotic microangiopathy.

Activated neutrophils—and, in particular, neutrophil extracellular traps (**NETs**)—continue to receive significant attention as drivers of SARS-CoV-2-mediated thromboinflammation. NETs are an extracellular meshwork of DNA, histones, and microbicidal proteins released from activated neutrophils via a cell death program called NETosis. Neutrophils presumably deploy NETs to trap and kill pathogens (5); however, NETs may also be key players in the pathophysiology of thromboinflammatory diseases such as cancer, systemic lupus erythematosus, antiphospholipid syndrome (**APS**), and—based on recent work—COVID-19 (6-8). Indeed, our group and others have described high levels of NETs circulating in the blood of hospitalized COVID-19 patients, where they correlate with disease severity (6, 9-12). We have also found that neutrophil hyperactivity at the time of hospital admission predicts a more severe hospital course (13), and that NET levels are especially high in patients who experience thrombotic complications (14).

Another hallmark of COVID-19 is the development of autoantibodies against a variety of self-antigens, particularly among COVID-19 patients with severe disease (15-18). Many of those autoantibodies appear to perturb normal immune function while influencing disease severity and progression. For example, anti-type I interferon antibodies attenuate a presumably protective immune response against SARS-CoV-2 and thereby exacerbate disease (19). Autoantibodies against annexin A2 and other immunomodulatory proteins are also associated with severe COVID-19 (20, 21). Furthermore, work by our group found that many hospitalized COVID-19 patients developed antiphospholipid antibodies routinely found in APS, an acquired autoimmune thrombophilia (15). Mechanistically, these antibodies promote pathogenic NETs formation and accelerate thrombosis *in vivo*.

Interestingly, we recently found high levels of autoantibodies targeting NETs themselves in patients with APS (22), where they impair NET clearance and activate the complement cascade, and thereby amplifying thromboinflammation (22). Here, we sought to evaluate the presence of anti-NET antibodies in patients hospitalized with COVID-19 and to determine their potential functions and clinical associations.

RESULTS AND DISCUSSION

Anti-NET activity in COVID-19. Utilizing a unique ELISA platform that we developed (**Figure 1A**), we measured anti-NET IgG and IgM antibodies in 171 patients hospitalized with COVID-19 alongside 48 healthy controls. The clinical characteristics of these patients are described in **Supplementary Table 1**. Elevated levels of anti-NET IgG and IgM were detected in patients with COVID-19 as compared with healthy controls (**Figure 1B-C**). Sixty-seven COVID-19 patients (39%) had high anti-NET IgG activity, while 86 (50%) had high anti-NET IgM activity (each based on a threshold set at 2 standard deviations above the control mean). We also noted a strong correlation between anti-NET IgG and anti-NET IgM ($r=0.51$, $p<0.0001$, **Supplementary Figure 1**). Beyond the ELISA platform, we also assessed anti-NET activity by immunofluorescence microscopy. When immobilized NETs were incubated with serum from COVID-19 patients with high levels of anti-NET IgG, antibodies robustly decorated NET strands (**Figure 1D**). In summary, elevated levels of anti-NET IgG and IgM antibodies are present in patients hospitalized with COVID-19.

Anti-NET antibodies correlate with circulating markers of NET release. Circulating markers of NET release, myeloperoxidase-DNA complexes (**MPO-DNA**) and calprotectin, were assessed in the same cohort of patients. Anti-NET IgG and IgM both demonstrated positive correlations with these markers (**Figure 2A-B**).

Association of anti-NET activity with clinical parameters. We next asked whether the presence of anti-NET IgG and IgM associated with various clinical parameters. Specifically, we assessed potential correlations with clinical parameters that track with COVID-19 severity including D-dimer (**Figure 3A-B**), SpO₂/FiO₂ ratio (i.e., oxygenation efficiency) (**Figure 3C-D**), absolute neutrophil count (**Supplementary Figure 2A-B**), and platelet count (**Supplementary Figure 2C-D**). Anti-NET IgG and IgM both demonstrated positive correlations with D-dimer, absolute neutrophil count, and platelet count, as well as negative correlations with SpO₂/FiO₂ ratio. To determine associated clinical status, we compared serum samples of patients requiring mechanical ventilation (n=61) to patients with oxygen saturation $\geq 94\%$ on room air (n=42). As compared with patients breathing room air, patients requiring mechanical ventilation had significantly higher levels of anti-NET IgG and IgM (**Figure 3E-F**). In summary, anti-NET IgG and IgM levels track with various clinical parameters. Most notably, they are associated with impaired oxygen efficiency.

Relationship of anti-NET activity to NET degradation. Work by our group and others has revealed that one function of anti-NET antibodies in patients with lupus (23) and APS (22) is to impair NET degradation. Here, we asked whether antibodies purified from COVID-19 sera with high anti-NET activity might impact the ability of serum DNases to degrade NETs. We selected four COVID-19 patients with high anti-NET IgG and purified their total IgG fractions. These were tested alongside IgG pooled from healthy controls (**Figure 4A**). Indeed, control serum supplemented with COVID-19 patient IgG significantly impaired NET degradation as compared with control serum supplemented with healthy control IgG (**Figure 4B**). In summary, anti-NET IgG from COVID-19 patients impairs the ability of serum to degrade NETs.

In COVID-19, NETs may be directly induced by SARS-CoV-2 virus (1, 24). They may also be triggered indirectly via activated platelets and prothrombotic autoantibodies (1, 15). Once formed, NETs exert direct cytotoxic effects against pulmonary epithelium resulting in alveolar damage and fibrosis (1). They can also injure endothelial cells leading to microvascular damage and thrombotic microangiopathy in lungs, kidneys, and heart (1). Here, we explored the hypothesis that dysfunctional NET clearance may also contribute to COVID-19 pathogenesis.

SARS-CoV-2 appears to have a unique relationship with the immune system. It evades host immune surveillance during early infection leading to high viral loads in some patients (1). As a result, the body then mounts a compensatory hyper-immune response in pursuit of viral clearance. This is characterized by the presence of a lupus-like peripheral B cell compartment in which naïve B cells take an extrafollicular route to becoming antibody-producing cells, and in doing so bypass the normal tolerance checkpoints against autoimmunity provided by the germinal center (25). While this strategy may quickly produce a large amount of virus-neutralizing antibodies, it also sets the stage for the *de novo* production of various pathogenic autoantibodies.

NETs appear to elicit autoantibody production in systemic autoimmune diseases such as lupus, rheumatoid arthritis, and ANCA-associated vasculitis (26). For example, it has been suggested that increased NET formation, the presence of anti-NET antibodies, and impaired NET clearance all associate with disease activity and organ damage in lupus (26). Our group has found something similar in individuals with primary APS (22). Here, we found that high levels of anti-NET IgG and IgM are present in patients hospitalized with COVID-19. Those anti-NET antibodies not only impaired the intrinsic ability of serum DNases to clear NETs, but also

associated with impaired respiratory status and disease severity. It is possible that these anti-NET antibodies are important orchestrators of an imbalance between NET formation and clearance that perpetuates COVID-19 thromboinflammation.

While the ongoing vaccination campaign is working towards reducing COVID-19 incidence and mortality, millions of survivors of COVID-19 infection continue to suffer from longer-term symptoms of the disease. Certainly, diverse and functional autoantibodies produced during COVID-19 infection are a plausible contributor to the post-COVID syndrome. Intriguingly, one recent study observed that among nine COVID-19 survivors, five developed chronic “long-haul” symptoms and all five had potentially pathological autoantibodies (27). We have previously observed durable anti-NET IgG for up to four years among some APS patients (22). The data presented here suggest the presence of another functional autoantibody in COVID-19, and the persistence and potential long term consequences of these antibodies warrant further investigation.

MATERIALS AND METHODS

Human samples. Serum samples from 171 hospitalized COVID-19 patients were used in this study (**Supplementary Table 1**). Blood was collected into serum separator tubes containing clot activator and serum separator gel by a trained hospital phlebotomist. After completion of biochemical testing ordered by the clinician, the remaining serum was released to the research laboratory. Serum samples were immediately divided into small aliquots and stored at -80°C until the time of testing. All 171 patients had a confirmed COVID-19 diagnosis based on FDA-approved RNA testing. This study complied with all relevant ethical regulations and was approved by the University of Michigan IRB (HUM00179409). Healthy volunteers were recruited through a posted flyer; exclusion criteria for controls included history of a systemic autoimmune disease, active infection, and pregnancy. The 48 controls included 40 females and 8 males, with a mean age and standard deviation of 38 ± 10 .

Human neutrophil purification. Human neutrophils were isolated as we have done and described previously (22).

Generation of NETs. NETs were generated with PMA stimulation as described previously (28).

Partial digestion of NETs and quantification of protein. PMA-induced NETs were partially digested with 10 U/ml of Micrococcal nuclease (MNase, NEB) in the presence of 1x Micrococcal nuclease reaction buffer (NEB) for 20 minutes at 37°C. The reaction was stopped by adding Ethylenediaminetetraacetic acid (EDTA, Sigma) to a final concentration of 15 mM. NET protein concentration was determined using Bicinchoninic Acid Kit (Pierce) according to the manufacturer's instructions.

Anti-NET IgG and IgM enzyme-linked immunosorbent assays (ELISAs). A high-binding 96-well EIA/RIA plate (Greiner) was coated overnight at 4°C with MNase-digested NETs diluted to a concentration of 5 µg/ml in 0.05 M bicarbonate buffer (coating buffer). The plate was then washed once with 0.05% Tween 20 (Sigma) in PBS (wash buffer), and blocked with 4% BSA (Sigma) in PBS (blocking buffer) for 2 hours at 37°C. Serum samples were diluted to 1% in blocking buffer, added to the plate, and incubated for 90 minutes at 37°C. The plate was washed 5 times with wash buffer and then incubated for 90 minutes at 37°C with either anti-human IgG-HRP or anti-human IgM-HRP (Jackson Immuno) diluted 1:10000 in blocking buffer. The plate was washed 5 more times with wash buffer and was developed with 3,3',5,5'-

Tetramethylbenzidine (TMB) substrate (Invitrogen). The reaction was stopped by 2N sulfuric acid solution and the absorbance was measured at a wavelength of 450 nm using a Cytation 5 Cell Imaging Multi-Mode Reader (BioTek). Each sample was tested against a corresponding control in which no NETs antigen was plated. This created an individual background value for each sample, which was subtracted to obtain the final result.

Purification of human IgG fractions. IgG was purified from COVID-19 or control sera as we have done previously (15).

Immunofluorescence microscopy. 1×10^5 healthy control neutrophils were seeded onto 0.001% poly-L-lysine coated coverslips as described previously(22). To induce NET formation, neutrophils were incubated in serum-free RPMI media supplemented with L-glutamine and stimulated with 40 nM PMA for 2 hours at 37°C and 5% CO₂. Following stimulation, cells were fixed with 4% paraformaldehyde for 10 minutes at room temperature, followed by overnight blocking in 10% fetal bovine serum (FBS) in PBS (blocking buffer). For protein staining, fixed cells were incubated with either control or COVID serum (diluted to 10%) and polyclonal antibody to neutrophil elastase (Abcam Ab21595) diluted 1:100 in blocking buffer for 1 hour at 4°C, followed by fluorochrome-conjugated DyLight594 anti-human IgG (Thermo Fisher) and FITC-conjugated secondary (Southern Biotech) for 1 hour at 4°C. Nuclear DNA was detected with Hoechst 33342. Coverslips were mounted with Prolong Gold Antifade (Thermo Fisher) and images were collected with a Cytation 5 Cell Imaging Multi-Mode Reader (BioTek).

Quantification of S100A8/A9 (calprotectin). Calprotectin was measured with the Human S100A8/S100A9 Heterodimer DuoSet ELISA (DY8226-05, R&D Systems) according to the manufacturer's instructions (13).

Quantification of myeloperoxidase-DNA complexes. Myeloperoxidase-DNA complexes were measured as has been previously described (6, 29).

NET degradation assay. PMA-stimulated NETs were degraded as previously described with minor modifications (30). See the Supplementary Materials for a detailed description.

Statistical analysis. Normally-distributed data were analyzed by 2-sided t test and skewed data were analyzed by Mann-Whitney test. Comparisons of more than two groups were analyzed by

one-way ANOVA with correction for multiple comparisons by Dunnett's method. Correlations were tested by Spearman's correlation coefficient. Data analysis was with GraphPad Prism software version 8. Statistical significance was defined as $p < 0.05$ unless stated otherwise.

REFERENCES

1. Zuo Y, Kanthi Y, Knight JS, and Kim AHJ. The interplay between neutrophils, complement, and microthrombi in COVID-19. *Best Pract Res Clin Rheumatol*. 2021:101661.
2. Higgins V, Sohaei D, Diamandis EP, and Prassas I. COVID-19: from an acute to chronic disease? Potential long-term health consequences. *Crit Rev Clin Lab Sci*. 2020:1-23.
3. Writing Committee for the CSG, Morin L, Savale L, Pham T, Colle R, Figueiredo S, Harrois A, Gasnier M, Lecoq AL, Meyrignac O, et al. Four-Month Clinical Status of a Cohort of Patients After Hospitalization for COVID-19. *JAMA*. 2021.
4. Sudre CH, Murray B, Varsavsky T, Graham MS, Penfold RS, Bowyer RC, Pujol JC, Klaser K, Antonelli M, Canas LS, et al. Attributes and predictors of long COVID. *Nat Med*. 2021.
5. Grayson PC, and Kaplan MJ. At the Bench: Neutrophil extracellular traps (NETs) highlight novel aspects of innate immune system involvement in autoimmune diseases. *J Leukoc Biol*. 2016;99(2):253-64.
6. Zuo Y, Yalavarthi S, Shi H, Gockman K, Zuo M, Madison JA, Blair CN, Weber A, Barnes BJ, Egeblad M, et al. Neutrophil extracellular traps in COVID-19. *JCI Insight*. 2020.
7. Yalavarthi S, Gould TJ, Rao AN, Mazza LF, Morris AE, Nunez-Alvarez C, Hernandez-Ramirez D, Bockenstedt PL, Liaw PC, Cabral AR, et al. Release of neutrophil extracellular traps by neutrophils stimulated with antiphospholipid antibodies: a newly identified mechanism of thrombosis in the antiphospholipid syndrome. *Arthritis Rheumatol*. 2015;67(11):2990-3003.
8. Bonaventura A, Liberale L, Carbone F, Vecchie A, Diaz-Canestro C, Camici GG, Montecucco F, and Dallegri F. The Pathophysiological Role of Neutrophil Extracellular Traps in Inflammatory Diseases. *Thromb Haemost*. 2018;118(1):6-27.
9. Skendros P, Mitsios A, Chrysanthopoulou A, Mastellos DC, Metallidis S, Rafailidis P, Ntinopoulou M, Sertaridou E, Tsironidou V, Tsigalou C, et al. Complement and tissue factor-enriched neutrophil extracellular traps are key drivers in COVID-19 immunothrombosis. *J Clin Invest*. 2020.
10. Nicolai L, Leunig A, Brambs S, Kaiser R, Weinberger T, Weigand M, Muenchhoff M, Hellmuth JC, Ledderose S, Schulz H, et al. Immunothrombotic Dysregulation in COVID-19 Pneumonia is Associated with Respiratory Failure and Coagulopathy. *Circulation*. 2020.

11. Leppkes M, Knopf J, Naschberger E, Lindemann A, Singh J, Herrmann I, Sturzl M, Staats L, Mahajan A, Schauer C, et al. Vascular occlusion by neutrophil extracellular traps in COVID-19. *EBioMedicine*. 2020;58(102925).
12. Middleton EA, He XY, Denorme F, Campbell RA, Ng D, Salvatore SP, Mostyka M, Baxter-Stoltzfus A, Borczuk AC, Loda M, et al. Neutrophil Extracellular Traps (NETs) Contribute to Immunothrombosis in COVID-19 Acute Respiratory Distress Syndrome. *Blood*. 2020.
13. Shi H, Zuo Y, Yalavarthi S, Gockman K, Zuo M, Madison JA, Blair CN, Woodard W, Lezak SP, Lugogo NL, et al. Neutrophil calprotectin identifies severe pulmonary disease in COVID-19. 2020:2020.05.06.20093070.
14. Zuo Y, Zuo M, Yalavarthi S, Gockman K, Madison JA, Shi H, Woodard W, Lezak SP, Lugogo NL, Knight JS, et al. Neutrophil extracellular traps and thrombosis in COVID-19. 2020:2020.04.30.20086736.
15. Zuo Y, Estes SK, Ali RA, Gandhi AA, Yalavarthi S, Shi H, Sule G, Gockman K, Madison JA, Zuo M, et al. Prothrombotic autoantibodies in serum from patients hospitalized with COVID-19. *Sci Transl Med*. 2020;12(570).
16. Chang SE, Feng A, Meng W, Apostolidis SA, Mack E, Artandi M, Barman L, Bennett K, Chakraborty S, Chang I, et al. New-Onset IgG Autoantibodies in Hospitalized Patients with COVID-19. *medRxiv*. 2021.
17. Vlachoyiannopoulos PG, Magira E, Alexopoulos H, Jahaj E, Theophilopoulou K, Kotanidou A, and Tzioufas AG. Autoantibodies related to systemic autoimmune rheumatic diseases in severely ill patients with COVID-19. *Ann Rheum Dis*. 2020;79(12):1661-3.
18. Borghi MO, Beltagy A, Garrafa E, Curreli D, Cecchini G, Bodio C, Grossi C, Blengino S, Tincani A, Franceschini F, et al. Anti-Phospholipid Antibodies in COVID-19 Are Different From Those Detectable in the Anti-Phospholipid Syndrome. *Front Immunol*. 2020;11(584241).
19. Bastard P, Rosen LB, Zhang Q, Michailidis E, Hoffmann HH, Zhang Y, Dorgham K, Philippot Q, Rosain J, Beziat V, et al. Autoantibodies against type I IFNs in patients with life-threatening COVID-19. *Science*. 2020;370(6515).
20. Wang EY, Mao T, Klein J, Dai Y, Huck JD, Liu F, Zheng NS, Zhou T, Israelow B, Wong P, et al. Diverse Functional Autoantibodies in Patients with COVID-19. *medRxiv*. 2020.
21. Zuniga M, Gomes C, Carsons SE, Bender MT, Cotzia P, Miao QR, Lee DC, and Rodriguez A. Autoimmunity to the Lung Protective Phospholipid-Binding Protein Annexin

- A2 Predicts Mortality Among Hospitalized COVID-19 Patients. *medRxiv*. 2021:2020.12.28.20248807.
22. Zuo Y, Yalavarthi S, Gockman K, Madison JA, Gudjonsson JE, Kahlenberg JM, Joseph McCune W, Bockenstedt PL, Karp DR, and Knight JS. Anti-Neutrophil Extracellular Trap Antibodies and Impaired Neutrophil Extracellular Trap Degradation in Antiphospholipid Syndrome. *Arthritis Rheumatol*. 2020;72(12):2130-5.
 23. Hakkim A, Furnrohr BG, Amann K, Laube B, Abed UA, Brinkmann V, Herrmann M, Voll RE, and Zychlinsky A. Impairment of neutrophil extracellular trap degradation is associated with lupus nephritis. *Proc Natl Acad Sci U S A*. 2010;107(21):9813-8.
 24. Veras FP, Pontelli MC, Silva CM, Toller-Kawahisa JE, de Lima M, Nascimento DC, Schneider AH, Caetite D, Tavares LA, Paiva IM, et al. SARS-CoV-2-triggered neutrophil extracellular traps mediate COVID-19 pathology. *J Exp Med*. 2020;217(12).
 25. Woodruff MC, Ramonell RP, Nguyen DC, Cashman KS, Saini AS, Haddad NS, Ley AM, Kyu S, Howell JC, Ozturk T, et al. Extrafollicular B cell responses correlate with neutralizing antibodies and morbidity in COVID-19. *Nat Immunol*. 2020;21(12):1506-16.
 26. Lee KH, Kronbichler A, Park DD, Park Y, Moon H, Kim H, Choi JH, Choi Y, Shim S, Lyu IS, et al. Neutrophil extracellular traps (NETs) in autoimmune diseases: A comprehensive review. *Autoimmun Rev*. 2017;16(11):1160-73.
 27. Bhadelia N, Belkina AC, Olson A, Winters T, Urlick P, Lin N, Rifkin I, Kataria Y, Yuen RR, Sagar M, et al. Distinct Autoimmune Antibody Signatures Between Hospitalized Acute COVID-19 Patients, SARS-CoV-2 Convalescent Individuals, and Unexposed Pre-Pandemic Controls. *medRxiv*. 2021:2021.01.21.21249176.
 28. Najmeh S, Cools-Lartigue J, Giannias B, Spicer J, and Ferri LE. Simplified Human Neutrophil Extracellular Traps (NETs) Isolation and Handling. *J Vis Exp*. 201598).
 29. Kessenbrock K, Krumbholz M, Schonermarck U, Back W, Gross WL, Werb Z, Grone HJ, Brinkmann V, and Jenne DE. Netting neutrophils in autoimmune small-vessel vasculitis. *Nat Med*. 2009;15(6):623-5.
 30. Leffler J, Martin M, Gullstrand B, Tyden H, Lood C, Truedsson L, Bengtsson AA, and Blom AM. Neutrophil extracellular traps that are not degraded in systemic lupus erythematosus activate complement exacerbating the disease. *Journal of immunology*. 2012;188(7):3522-31.

ACKNOWLEDGEMENTS

YZ was supported by career development grants from the Rheumatology Research Foundation and APS ACTION. JAM was partially supported by the VA Healthcare System. YK was supported by the Intramural Research Program of the NIH and NHLBI, Lasker Foundation, Falk Medical Research Trust Catalyst Award, and the JOBST-American Venous Forum Award. JSK was supported by grants from the NIH (R01HL115138), Lupus Research Alliance, Rheumatology Research Foundation, and Burroughs Wellcome Fund. YK and JSK were supported by the University of Michigan Frankel Cardiovascular Center Ignitor Award and the A. Alfred Taubman Medical Research Institute.

AUTHORSHIP

YZ, SY, SN, CH, HS, AH, KG, MZ, and JAM conducted experiments and analyzed data. YZ, YK, and JSK conceived the study. All authors participated in writing the manuscript and gave approval before submission.

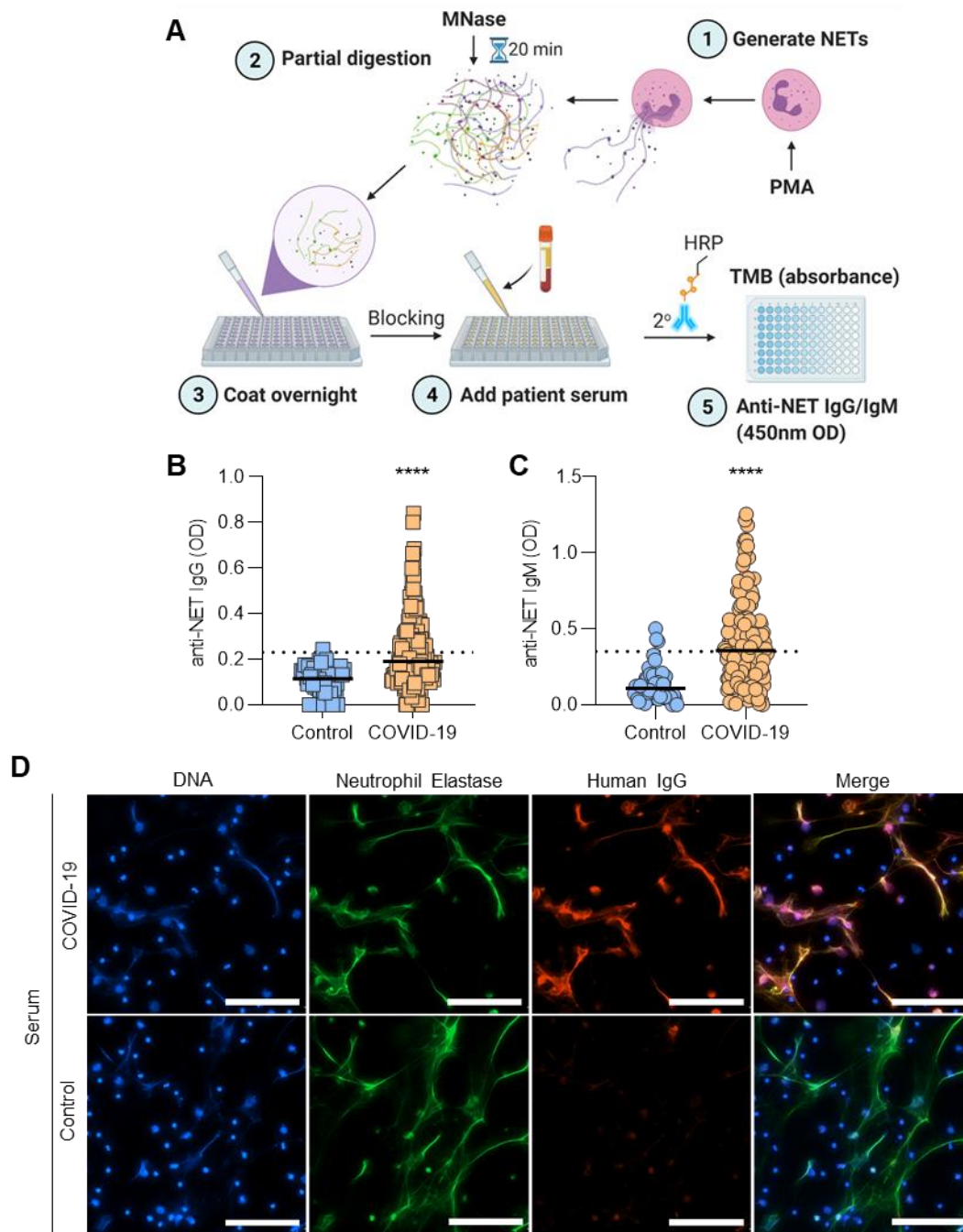


Figure 1: Detection of anti-NET IgG/IgM in sera of COVID-19 patients. **A**, Schematic illustration of anti-NET ELISA (created with BioRender.com). **B-C**, Anti-NET IgG and IgM were measured in sera from 171 hospitalized COVID-19 patients and 48 healthy controls. Levels of anti-NET IgG and IgM at 450-nm optical density (OD) were compared by Mann-Whitney test; ****p<0.0001. Dotted lines indicate threshold set at 2 standard deviations above the control mean. **D**, Control neutrophils were stimulated with PMA to generate NETs. Fixed NETs were then incubated with COVID-19 serum with high anti-NET antibodies or healthy control serum; scale bars=100 microns.

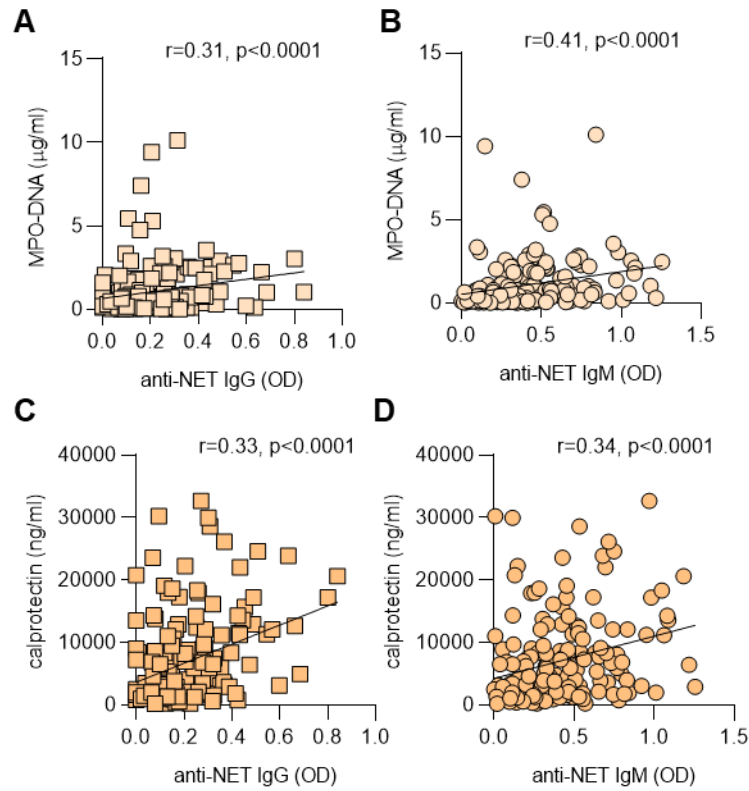


Figure 2: Correlation between anti-NET IgG/IgM and circulating markers of NETs. Spearman's correlation coefficients were calculated and are shown in the panels (n=171 COVID-19 patients for all panels).

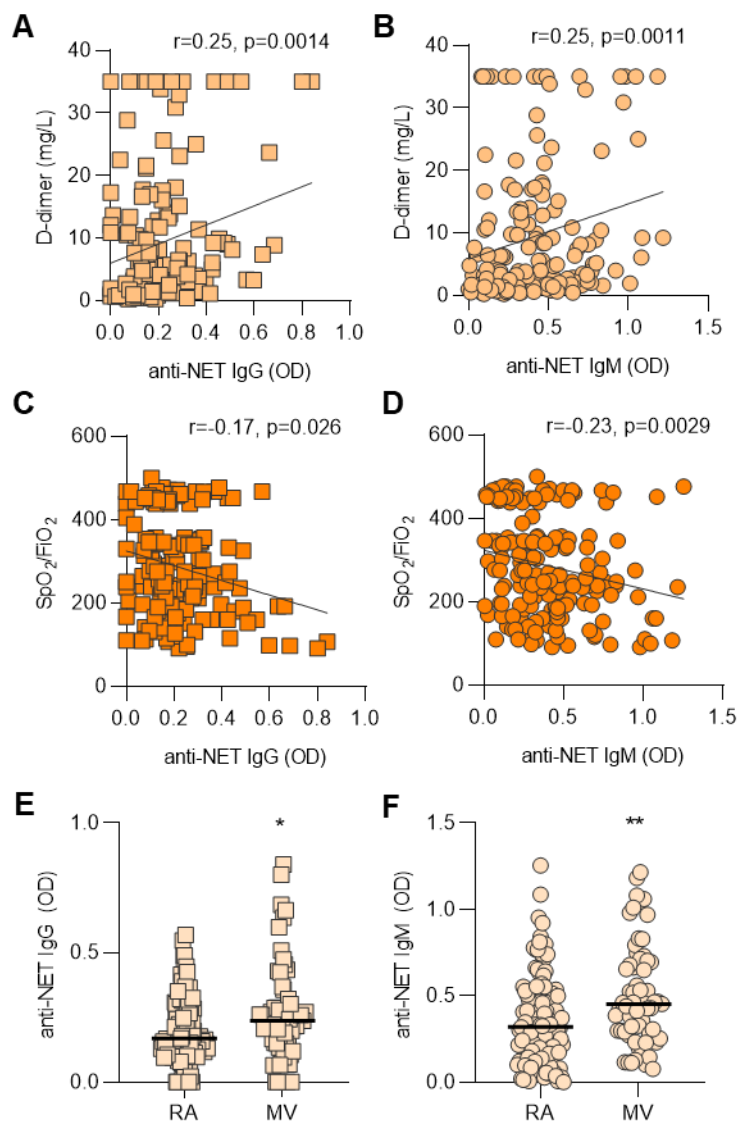


Figure 3: Clinical association of anti-NET IgG/IgM. A-D, Anti-NET IgG and IgM levels were compared to D-dimer ($n=165$) (A-B) and SpO_2/FiO_2 ($n=168$) (C-D) on the same day as the COVID-19 research sample. Spearman's correlation coefficients were calculated and are shown in the panels. E-F, COVID-19 patients were grouped based on clinical status: room air ($n=41$) and mechanical ventilation ($n=61$). Levels of anti-NET IgG and IgM were compared by Mann-Whitney test; $*p < 0.05$, $**p < 0.01$. RA=room air; MV=mechanical ventilation.

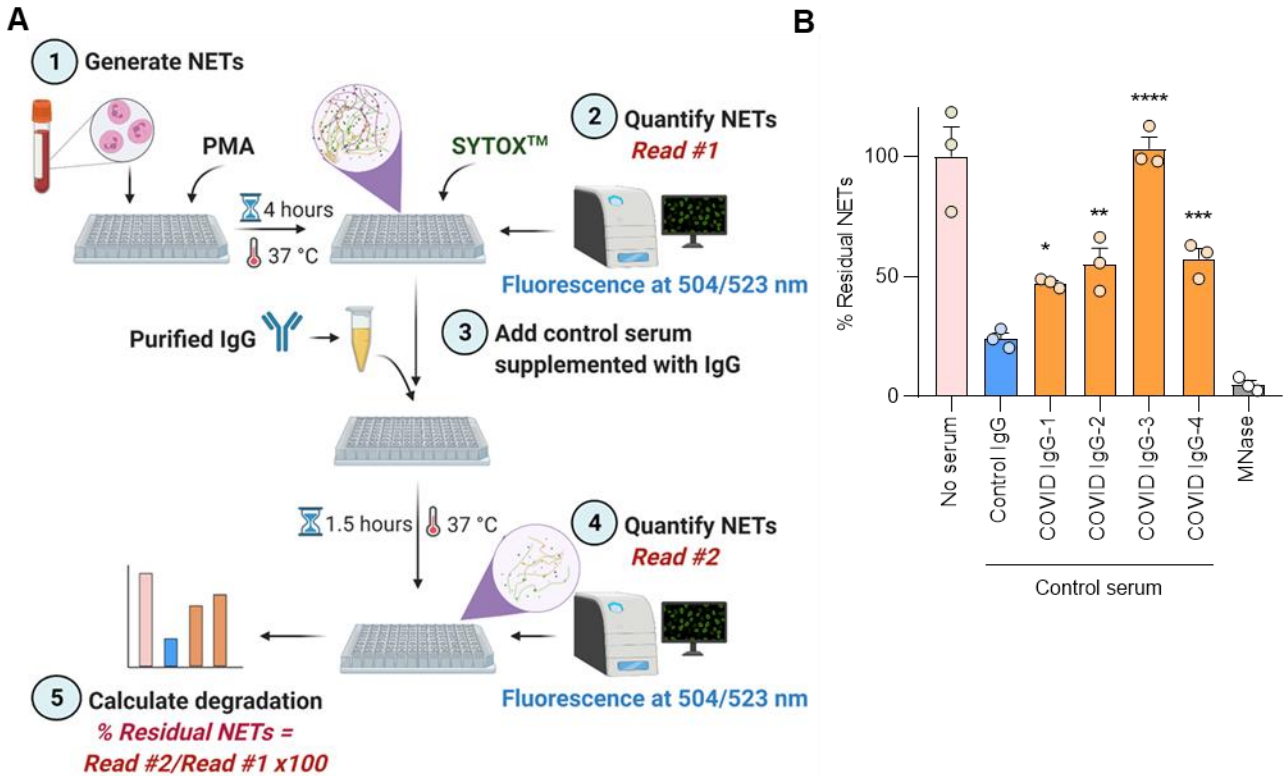


Figure 4: COVID-19 IgG impairs NET degradation. A, Schematic illustration of NET degradation assay (created with BioRender.com). **B,** NETs were then incubated with control serum that was supplemented with either purified COVID-19 IgG or control IgG. Some samples were treated with Micrococcal nuclease as a positive control. Untreated NETs (No serum) acted as negative control. % residual NETs was normalized against the mean of untreated NETs. The percentage of NET degradation was then compared to the control group by one-way ANOVA with correction for multiple comparisons by Dunnett's method; * $p < 0.05$, ** $p < 0.01$, *** $p < 0.001$, and **** $p < 0.0001$.

Supplementary Materials

Autoantibodies stabilize neutrophil extracellular traps in COVID-19

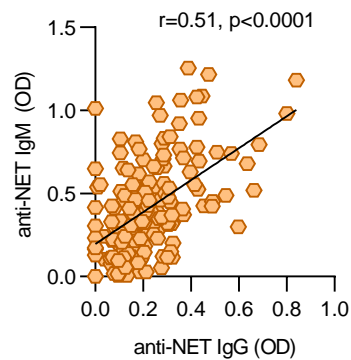
Zuo et al.

SUPPLEMENTAL METHODS

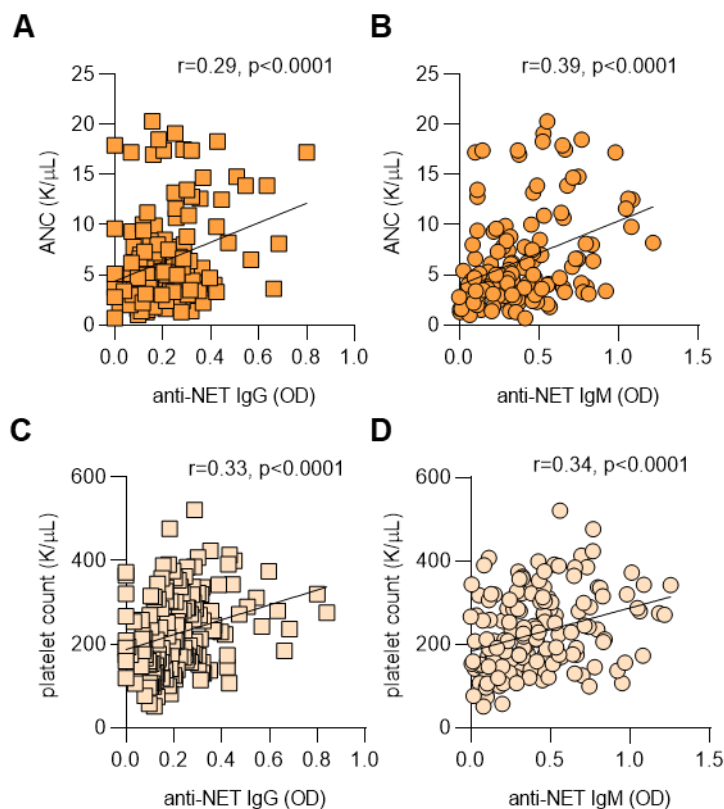
NET degradation assay: Purified control human neutrophils were resuspended in RPMI media (Gibco) supplemented with L-glutamine. Neutrophils (1×10^5) were seeded into each well of a 0.001% poly-L-lysine (Sigma)-coated 96-well black clear-bottom non-tissue culture plate (Costar 3631). To induce NET formation, cells were incubated in the presence of 40 nM PMA (Sigma) for 4 hours at 37°C and 5% CO₂. Following incubation, the culture media was gently aspirated and washed once with 1x PBS. NETosis was quantified by incubating the cells for 30 minutes at 37°C and 5% CO₂ with SYTOX Green (Thermo Fisher) diluted in PBS to a final concentration of 1 mM. PBS was gently aspirated and fresh 1x PBS was carefully added to each well.

Fluorescence was quantified at excitation and emission wavelengths of 504/523 nm using a Cytation 5 Cell Imaging Multi-Mode Reader (BioTek). To assess NET degradation, the PBS was gently aspirated from each well and NETs were incubated for 90 minutes (at 37°C and 5% CO₂) with healthy control serum diluted to 5% in nuclease buffer (10 mM Tris-HCl pH 7.5, 10 mM MgCl₂, 2 mM CaCl₂, and 50 mM NaCl) and supplemented with COVID or control IgG at a final concentration of 500ug/ml. Each sample was tested in triplicate, with MNase (10 U/ml) (Thermo Fisher)-treated wells serving as positive control. Following the 90-minute incubation, supernatant was discarded and 1x PBS was added to each well. To quantify residual NETs in each well, SYTOX fluorescence was re-measured at excitation and emission wavelengths of 504/523 nm using a Cytation 5 Cell Imaging Multi-Mode Reader (BioTek).

Supplementary Table 1: Demographic and clinical characteristics of COVID-19 patients		
Demographics		
	Number	171
	Age (years)*	61 ± 17 (25-95)
	Female	74 (43%)
	White/Caucasian	72 (42%)
	Black/African-American	77 (45%)
Comorbidities		
	Diabetes	69 (40%)
	Heart disease	52 (30%)
	Renal disease	50 (29%)
	Lung disease	47 (27%)
	Autoimmune	9 (5%)
	Cancer	23 (13%)
	History of stroke	16 (9%)
	Obesity	86 (50%)
	Hypertension	116 (68%)
	Immune deficiency	12 (7%)
	History of smoking	45 (26%)
In-hospital thrombosis		
	Arterial thrombosis	2 (1%)
	Venous thrombosis	8 (5%)
	Both	1 (0.6%)
Final outcomes		
	Discharged	138 (81%)
	Death	33 (19%)
* Mean ± standard deviation (range)		
♦ At time of sample collection		



Supplementary Figure 1: Association of anti-NET IgG with anti-NET IgM. Anti-NET IgG and anti-NET IgM were compared for 171 COVID-19 patients. Spearman's correlation coefficients were calculated and are shown in the panel.



Supplementary Figure 2: Association of anti-NET IgG/IgM with absolute neutrophil count (ANC) and platelet count. A-B, Anti-NET IgG and IgM levels were compared to ANC count on the same day as the research sample (n=138 COVID-19 patients). C-D, Anti-NET IgG and IgM levels were compared to platelet count on the same day as the research sample (n=164 COVID-19 patients). Spearman's correlation coefficients were calculated and are shown in the panels. ANC=absolute neutrophil counts.