

Body Clock: Matching Personalized Multimorbidity and Fast Aging Using Information

Entropy

*Salimi S¹, Vehtari Aki², Salive M³, Ferrucci L⁴

*Corresponding author: Shabnam Salimi, MD, Msc, ssalimi@som.umaryland.edu

¹Department of Epidemiology and Public Health, University of Maryland, School of Medicine, Baltimore, MD, USA

²Department of Computer Science, Aalto University, Espoo, Finland

³Division of Geriatrics and Clinical Gerontology, National Institute on Aging, Bethesda, MD, USA

⁴Intramural Research Program, National Institute on Aging

Author Contributions: ShS developed the concept of Body Clock as fast rate of aging, chose the statistical approach and model selection, did data management, analyzed the data, designed the graphs, and wrote the main body of the manuscript. VA: supervised the analyses in Bayesian inference, advised on the methods, and communicating the statistical analyses. SM: contributed to the multimorbidity concepts, interpretation of the results, discussion, writing, and editing the manuscript. FL: Contributed to the multimorbidity concept as the rate of aging, interpreting results, writing, and editing the manuscript.

Competing Interests Statement: There are no disclosures to declare. This material should not be interpreted as representing the viewpoint of the US Department of Health and Human Services, the National Institutes of Health, or its represented agencies.

Keywords: Multimorbidity, fast aging, precision medicine, Body Clock, Bayesian inference

Abstract

With aging, most older adults are at risk of having more than two diseases, conventionally defined as multimorbidity. We determined body organ disease number (BODN) as a new multimorbidity index. We measured the degree to which each disease level, from mild to severe, predicts longitudinal BODN uncoupled from chronological age. We determined Body Clock using global disease levels burden from all systems predicting longitudinal BODN for each individual, which is a proxy of the personalized rate of biological aging. Change in Body Clock predicts late-life age-related outcomes and can be used for geriatric clinics and clinical trials for precision medicine.

The current medical practice focuses primarily on one disease or on diseases that are coexistent in the same organ system. However, epidemiological data show that multimorbidity, conventionally defined as having two or more diseases, is the most frequent health condition in persons 65 and older¹⁻⁴. Multimorbidity is associated with a high risk of polypharmacy, iatrogenesis, and geriatric syndromes that imposes burdens on individuals and society⁵. The rate of aging itself is posited as the underlying cause of pathologies across body systems, with damage accumulation exceeding homeostatic mechanisms and physiological resilience, emerging clinically as multimorbidity^{6,7}.

The central hypothesis that multiple chronic diseases represent a clinical manifestation of the rate of aging has led to the development of tools for measuring multimorbidity.

Some of these tools consider the number of chronic diseases⁸, whereas others weigh the contribution of specific diseases based on their estimated impact on functional status⁹ or mortality^{10,11}. The first type of tool fails to consider that chronic diseases are highly heterogeneous. The second type can underestimate the health burdens in patients of one potentially fatal disease or fail to recognize individuals can accumulate multiple diseases and still live long lives. Consistent dynamic compensatory mechanisms might counteract specific organ systems' dysfunctions, while global physical and cognitive functions remain preserved⁹.

Alternative approaches have estimated the rate of aging using indices that aggregate multiple physiological and/or blood biomarkers¹²⁻¹⁴. In most cases, chronological age (c-age) to predict mortality or self-reported health^{12,14,15} or late-life outcomes^{16,17} were included as part of the indices. Including c-age or late-life outcomes might skew the metric toward older c-ages and fail to capture specific early health deterioration. Moreover, indices based on volatile biomarkers might be prone to fluctuations due to transient stress levels and entropic forces, not distinguished

between damage and adaptation, masking underlying pathophysiological changes related to multimorbidity.

An ideal tool should capture sub-clinical to clinical states as an overarching health assessment and address the complexity of multimorbidity uncoupled from c-age and independent of late-life outcomes^{18,19}. With these characteristics in mind, we developed a global outcome measure of multimorbidity called *Body Organ Disease Number* (BODN) as an ordinal number ranging 0-13. BODN is the number of organ systems with at least one disease. We assessed the beta coefficient estimates of all diseases at two lagged times that incorporate into BODN over time uncoupled from c-age. Given the premise of interindividual variability in rates of chronic disease manifestation and using all disease levels in a model, we predicted BODN over time using lagged disease-levels burdens at individual-levels as the personalized rate of biological aging termed *Body Clock*.

We used Bayesian inference to obtain maximum information on the coefficient estimates and incorporated health deterioration from subclinical to clinically diagnosed diseases. We show that Body Clock can predict late-life outcomes ranging from physical functional declines to death.

Results

To calculate observed BODN, the presence of a specific disease for each organ system was established based on predefined impairment criteria as either deviation from values at healthy young or commonly accepted diagnoses in clinical practice. A specific organ system with at least one positive disease contributes to the BODN as a global multimorbidity measure. In addition to 11 organ systems, we also counted cerebrovascular accident (CVA), sharing pathophysiology across several organ systems, and cancer, with its distinct pathophysiology, giving BODN a range from 0 to 13 as an ordinal outcome (Fig. 1a). Over the study period, median BODN increased with age so that for those at age 27-44 years, BODN was 2 (range:0-8), at 45-54 years was 3 (range 0-11), at 55-64 was 4 (range0-11), at 65-74 was 5 (range: 2-11), at 74-85 was 6 (range: 2-11), at older than 85 was 7 (range: 3-12). As lagged predictors, the organ-specific diseases were assigned an ordinal number for their deviation from younger age, severity or stage of disease (Table 1).

With the premise that each disease impacts body systems heterogeneously, we determined coefficient estimates of lagged disease(s) at two time points (time-1 and -2) predicting longitudinal BODN (Fig. 1b). For each disease, we quantified a “total disease beta coefficient estimate” as well as “disease level estimates” to predict longitudinal BODN (from one lagged time to last follow-up), applying multilevel ordinal regression in the Bayesian inference framework with individuals as a model level (model levels are different than disease levels) and reported 95% credible intervals (CI), counterparts to confidence intervals (Table 1). Avoiding possible crude categorization, we used “monotonic effect” in a Bayesian inference framework that considers the ordinal predictor as a continuous variable and provides a total coefficient estimate from the first to the last level of an ordinal predictor. Then it introduces ordinal cut-

points after encountering the data and provides the proportion of each ordinal level so that level-specific estimates can be quantified. First, to assess how time predicts BODN, a model included only time as the period from the lagged disease to the last follow-up. To understand how c-age, single-disease, or single organ-system diseases incorporate into longitudinal BODN, we separately developed models at time-1 and time-2 for c-age, single disease, single organ-system diseases, multiple-systems diseases, and finally global disease levels burden from all systems. We obtained the degree to which each disease and its levels incorporate into longitudinal BODN. We then assessed each model's performance by quantifying model weight, which indicates model predictivity, and compared each model with c-age to disentangle the predictive role of c-age versus lagged single disease, single system, and multiple systems to predict longitudinal BODN. The model performance assessment (leave-one-out cross-validation)²⁰ and model weight comparisons (Bayesian Stacking weights)²¹ are described in the methods. Using the post-analysis prediction function in the model including time-1 and -2 global disease burden levels, we predicted longitudinal BODN for each individual, termed *Body Clock*, then determined change in Body Clock over time.

Single Disease and Diseases of Single System Heterogeneously Incorporate into

Longitudinal BODN. All single diseases and single-organ system diseases with heterogeneous magnitudes of beta estimates, significantly incorporated into longitudinal BODN (multimorbidity) except hyperthyroidism. C-age in age-only model at time-1 and -2 was a strong predictor of BODN (time-1 age: $b=0.20\pm 0.01$, 95% CI=0.19–0.23; time-2 age: $b=0.24\pm 0.01$, 95% CI=0.21–0.26; Tables S2). Diseases of a single system, e.g., cardiovascular system (CVS), also heterogeneously and significantly predicted multimorbidity at both time-1 and -2 (Table S2).

Preceding Diseases and Disease Level Burdens of Multiple System Heterogeneously

Incorporate into Longitudinal BODN. We assessed the degree to which disease levels of all organ systems incorporate into longitudinal BODN, quantifying posterior coefficient estimates and 95% CI. Overall, all time-1 diseases heterogeneously incorporate into BODN. However, hyperthyroidism, peripheral artery disease (PAD), and Parkinson's, with wide credible intervals (including 0), had larger uncertainty in predicting BODN (Fig. 2a,b, Table S2a). The CVS had the largest frequency as a single organ system and was the main component of BODN at all age groups (Fig. S1, S2). However, there was variability in its disease estimates with hypertension (HTN, $b=0.49$, 95% CI=0.38–0.59) and congestive heart failure (CHF, $b=0.32$, 95% CI=0.20–0.45) as the strongest predictors that incorporated into BODN.

Overall, milder states of organ system diseases (e.g., transitional ischemic attack, impaired glucose tolerance, mild anemia, subclinical hypothyroidism, cataract, mild liver disease, gingivitis without edentulous, osteopenia, and mild osteoarthritis, and poor hearing that improves with hearing aid) predicted multimorbidity with larger estimates than the more severe states. Likewise, diseases with no treatment modalities had larger coefficient estimates predicting multimorbidity (BODN), as seen with HTN, type-2 diabetes mellitus (DM), hyperlipidemia, chronic bronchitis, gastrointestinal disease (GID), depression, and Parkinson's (Fig. 2b, Table S2a). For example, HTN with no treatment ($b=0.32$, 95% CI=0.26–0.40) was more predictive of BODN than HTN with treatment ($b=0.16$, 95% CI=0.13–0.19; Fig. 2a, Table S2a). Moreover, CHF with preserved ejection fraction (EF; $b=0.23$, 95% CI=0.14–0.32), common with aging, had a larger coefficient estimates than CHF with low EF ($b=0.09$, 95% CI=0.05–0.12). For arrhythmias, sinus bradycardia, followed by elongated QTc and atrial fibrillation, incorporated more significantly into multimorbidity than others.

Stage-1 age-related CKD, uncoupled from diabetic kidney failure, incorporated more strongly into multimorbidity (stage1; $b=0.54$, 95% CI=0.42–0.71) than stage-2 ($b=0.07$, 95% CI=0.05–0.09) and stage-3 ($b=0.10$, 95% CI=0.08–0.13), followed by end-stage-renal disease (stage-4; $b=0.20$, 95% CI=0.16–0.27; Fig. 2a, b, Table S2a).

We detected a similar dynamic pattern in the time-2 full model integrating all diseases, but now hyperthyroidism ($b=1.47$, 95% CI=0.45–2.60) and Parkinson's ($b=0.76$, 95% CI=0.16–1.37) incorporated significantly into multimorbidity (Fig. 2c,d, Table S2b). Model assessments showed that full models had the highest accuracy in predicting multimorbidity (Table S3, Fig. S3a-b). Notably, while PAD strongly predicted multimorbidity as a single disease (time-1; $b=3.68$, 95% CI=2.52–4.81) or as part of a single organ system (time-1; $b=1.36$, 95% CI=0.27–2.43), its significance was eliminated in the full models (time-1: $b=-0.04$, 95% CI=-0.5–0.47; time-2: $b=-0.04$, 95% CI=-0.58–0.49). One could speculate that shared pathophysiology among one system's diseases might change its significance when collapsed into one model. To test this, we used Bayesian stacking that finds model-specific weights. The model has zero weight if it is not adding more predictive information to the other models. Using Bayesian stacking weights for all cardiovascular-related single-disease models, we assessed their usefulness in predicting multimorbidity. The models' weights for PAD and ischemic heart disease (IHD) turned to 0, but allocating weights to HTN, CHF, and arrhythmia by 49.7%, 48.3%, and 2%, respectively, suggesting shared pathophysiology between CVAS diseases.

Age Outperforms Time, Single Disease, and Single Organ System to Predict Longitudinal BODN. Because most chronic diseases manifest at older ages, we hypothesized that c-age is a stronger predictor of longitudinal BODN than any single disease or single-system diseases.

Bayesian Stacking of model weights revealed that the age-only model outweighed any single disease or single-system diseases, suggesting that c-age is the driving force for health deterioration. Among all single diseases, eye, kidney, and periodontitis carried larger weights predicting BODN, followed by GID and DM (Fig. 3; Table S2). Comparing time and c-age model weights revealed c-age is a stronger predictor than time, at both time-1 and time-2 (Table S3).

Diseases of Multiple Systems Outperform C-Age in Predicting Longitudinal BODN. When we used one system's integrated diseases, the models performed better than any single disease to predict multimorbidity. With the premise that diseases of one system can impact all other systems, we hypothesized that global burdens of disease levels from multiple systems would better predict future BODN than a single disease, single-system diseases, or c-age. In the stepwise analyses, multiple-system integrated diseases better predicted longitudinal BODN than any other single model shown by model performance and model weight compared to age-only models. Finally, integrating all lagged diseases, the full models outperformed c-age to predict longitudinal BODN (Figs. 3e,f, Table S2), suggesting that this is a global measure capturing the rate of biological aging and its effect on health. Likewise, global disease burdens at time-2 predicted BODN better than c-age so that the time-2 full model outweighed c-age in predicting BODN with a larger weight than the time-1 model (when participants are younger, and time is longer). Together, this shows that intrinsic biological age does increase with c-age and time, but it is steeper with advancing c-age (Figs. 3e,f). In-sample (simulated BLSA data) and out-of-sample validations (InCHIANTI data) confirmed these findings (Fig. S4).

Body Clock in Men and Women and Change in Body Clock Over Time. We used burdens of disease levels at each time point to predict longitudinal BODN at the individual level,

termed *Body Clock*. Therefore, Body Clock can be based on time-1 diseases or time-2 disease levels. The change in Body Clock is quantified based on both time-1 and time-2 predicted longitudinal BODN and its change from baseline (Fig 1b). In the multilevel analyses, individuals are included as a model level. The spaghetti plots depict the heterogeneity in individuals' Body Clock's trajectories even within the same c-age spectrum, revealing a unique rate of aging for each person (Fig. 4a,b). Quantifying a personalized Body Clock, from sub-clinical states to severe diseases, allows us to measure the process of aging at any age. Using quadratic spline regressing Body Clock over c-age revealed that Body Clock increases non-linearly with c-age over lifespan from the 40's to the 90's, in both women and men (purple overlay, Fig. 4a,b). The association of Body Clock based on time-1 diseases and c-age groups with 10-year intervals showed increase in Body Clock with c-age over the lifespan (men: $b=0.95$, 95% CI= 0.79-0.95; women: $b=0.90$, 95% CI=0.89-0.98). In addition to fixed effect of c-age on Body Clock, we assessed the random effects of each c-age, including age (years) as model level, to quantify variability of Body clock within the same c-age and between c-ages. The wide 95% credible interval depicts significant within-age variability of Body Clock (does not include 0) after age 67, increasing with c-age (Fig 4c).

Body Clock Predicts SPPB, Disability, Geriatric Syndrome, and Mortality. To assess whether Body Clock predicts late-life age-related outcomes, we performed multilevel cubic-spline Cox-regression hazard models within the Bayesian framework²² to predict Short Battery of Physical Performance (SPPB) <9 ²³; disability (Activities of Daily Living scale [ADL] >1 or Instrumental Activities of Daily Living scale [IADL] >1)²⁴; geriatric syndrome (having injurious fall or urinary/bowel incontinence²⁵); and mortality (Fig. 5). The results showed that people with higher Body Clock are at higher risk of SPPB <9 (hazard ratio [HR]=2.30, 95% CI=1.85–2.90,

SD=18.0); geriatric syndrome (HR=1.70, 95% CI=1.55–1.80, SD=3.30); disability (HR=1.8, 95% CI=1.44–1.80); and mortality (HR=1.71, 95% CI=1.42–2.11, SD=1.68), showing Body Clock’s capability as an initial measure of health to predict late-life outcomes. To evaluate a dynamic reciprocal relation between Body Clock and SPPB, we examined the association between time-1 SPPB<9 with the change in Body Clock, revealing that lagged functional impairment also predicts change in Body Clock (SPPB<9) (b=0.96, 95% CI=0.57-1.35).

Discussion

We applied Bayesian inference to longitudinal data with well-defined clinical information and developed a validated personalized tool that matches multimorbidity with fast aging.

Approaching multimorbidity as a global organ system health outcome, we defined body organ disease number (BODN) and quantified the degree to which each disease levels incorporate into longitudinal BODN. Using the post-analysis prediction function, we defined individual-based predicted BODN, termed Body Clock. The heterogeneity in disease estimates and the interindividual variability in Body Clock supports the idea of heterogeneity in rates of both organ and individual aging. C-age was a stronger predictor of BODN compared to any single disease or single organ system. However, global burden of disease levels and their levels outperformed c-age, allowing to predict individual-based BODN and quantify Body Clock as a rate of biological aging uncoupled from c-age, which predicts late-life outcomes.

The Charlson Index ²⁶, a common hospital-based multimorbidity index, includes c-age weighted diseases based on a hazard ratio for predicting 1-year mortality. The category-allocated weighted value might bias the multimorbidity score by selective-mortality, disregarding early-onset changes at younger ages. However, Body Clock, uncoupled from c-age, reflects progressive health impairments at any age independent of mortality. The Cumulative Illness Rating Scale for Geriatric (CIRS-G) is another hospital-based index using medical chart reviews of 13 systems. It includes both acute and chronic disease burdens, to calculate a total score, a severity score as an average over the severity of the diseases (0 to 4), and a comorbidity index as mean severity score of 2 or more. CIRS-G can skew the severity scores toward the acute condition that originally caused the hospitalization. For example, current acute myocardial infarction is scored 4 while congestive heart failure, an age-related health deteriorating chronic disease is scored 2.

Moreover, averaging over the severity of the diseases assumes that the disease severity levels are equidistant. However, we showed substantial heterogeneity in disease levels' estimates that predict body organ systems. Moreover, averaging the disease severity levels might bias the comorbidity index by underestimating chronic diseases relative to acute morbidities. Disability, a late-life outcome, was also included as part of the disease severity score, while we predicted BODN as Body Clock independent of late-life outcomes²⁷. Nevertheless, our suggestive algorithm could be applied to patients' chart review at hospital or clinic to predict late-life outcomes.

There is consensus that functional integrity without disability is one key component of healthspan^{28,29}. Hence, some multimorbidity tools, such as the multimorbidity-weighted index, employed physical function to weight diseases to measure multimorbidity^{9,30}. However, one might have physical function resilience when compensatory physiologic strategies in some organs cope with the effects of damage accumulation in other organ systems⁶, leading multimorbidity-weighted estimates biased by physical functional states. Moreover, weighting organs by physical function status skews the metric toward more irreversible late-life health states. Notably, counterintuitive finding from a clinical trial, the LIFE trial, aimed at targeting late-life functional decline with structured physical activity intervention, reported paradoxical results for multimorbidity with further hospitalization and mortality in the group with higher multimorbidity burdens³¹. However, we showed that declining physical function predicts increased Body Clock, reinforcing its bidirectionality³², suggesting that age-related impairments should be measured and intervention(s) initiated before irreversible declines occur. Therefore, we developed Body Clock independent of physical functioning, yet it predicted late-life outcomes with high accuracy.

Some indices use diseases that predict in-hospital mortality as multimorbidity measures. Any health tool based on mortality^{10,12,33} is more life-span oriented and can bias multimorbidity measures in survivors of potentially fatal diseases who have more extended longevity. Moreover, the mortality rate itself can be confounded by the type of hospital facilities, type of care, individual choices for care and technological advances over time. As such, we quantified Body Clock based on a prediction of future BODN as a measure of systems multimorbidity rather than predicting mortality. Other indices apply summation of the number of diseases while disregarding the possible heterogeneity in the degree to which these diseases incorporate into multimorbidity⁸. We showed such heterogeneity exists for chronic diseases and their levels, accentuating the variability in organ aging. For example, the cardiovascular system (CVS) with the highest system morbidity frequency across all age spectrum includes five diseases. However, CHF with preserved ejection fraction, mainly reported in older adults³⁴; HTN without treatment; age-related arrhythmias such as sinus arrhythmia; and atrial fibrillation^{35,36} were the levels that predicted BODN most strongly, indicating that merely summing the number of diseases can over or underestimate multimorbidity.

Alternatively, several tools have been developed to reveal the rate of aging, mainly employing biochemical and/or physiological biomarkers, which might not disentangle damage from compensatory mechanisms^{12,13,15}. Moreover, biomarker-based tools can fluctuate due to transient stress levels and, therefore, might not distinguish between immediate compensatory mechanisms and longer-term health perturbations. One could speculate that those who do not respond well to stress and have lower values for these markers might have worse health problems.

Data showed that diseases at sub-clinical states or without treatment have larger estimates for predicting multimorbidity. Notably, clinical trials have shown that mild hypertension strongly associates with cognitive impairments³⁷ or suggested that intensive HTN treatment is protective for cognitive impairments and kidney function³⁸⁻⁴⁰. Our results also endorse the idea that sustained exposure to subclinical disease levels might result in chronic wear and tear causing damage accumulation, and culminates in variable impairment in some organ systems, manifested as heterogeneity in organ disease levels' estimates, and change in personalized Body Clock. Moreover, the sub-clinical states with large estimate magnitudes and wide uncertainty at younger ages suggest that some organ systems might maintain functional capacity to respond to accumulated damage in other organ systems with diminished resilience. Ferrucci's team has shown that the resting metabolic rate (RMR) at disease-onset increases but the RMR declines with advancing chronic diseases over time with possible exhaustion in organ function at subcellular levels⁴¹. Likewise, heterogeneity in disease-level estimate magnitudes suggests that at older c-age, the damaged state may reach a plateau with perturbed organs' reserve to function and no repair capacity remains to respond to further damage. Age-related changes at sub-cellular and tissue levels can be manifested as physiological changes and finally as irreversible pathology accumulation. Therefore, it is not unrealistic to claim that Body Clock, an integrated estimates of disease levels predicting BODN, can capture allostatic overload, which is dramatic, cumulative physiological dysregulation, outstripping the convergence of stress and adaptation⁶. Therefore, additional body stressors, such as diseases of other organs, medicines, infection, and other socio-environmental stressors, can be manifested as unique rate of increases in Body Clock.

For the first time, Body Clock matches multimorbidity with fast aging at individual level.

Applying multilevel Bayesian inference to medically and clinically well-defined phenotypes with cross-population consistency showed that integrated disease levels of body organ systems outperform c-age to predict future BODN. It also unraveled heterogeneity in organ systems aging, endorsing multimorbidity as a clinical manifestation of the rate of intrinsic aging that was otherwise hidden with a single disease or a single organ-system approach. Furthermore, as an individual-based metric of damage accumulation, Body Clock can be applied to distinguish biomarkers of damage from those of resilience.

There are limitations to this study. One is that the time between follow-up points were not equidistant. However, by including time in the model and calculating personalize-based estimates we still could quantify Body Clock with high accuracy. Also, the BLSA is a study of healthy aging, recruiting initially healthy individuals. Hence, the general population with more severe conditions and hereditary diseases might have more accelerated Body Clock over c-age or time. However, because we quantify Body Clock at individual level, Body Clock can be updated whenever new personalized information on new disease levels is available.

Body Clock can be used to further disentangle variability in biological aging and its underlying mechanisms, including genetics and environmental factors, and creating new individual-based, multifaceted biomarkers and tailored interventions and can be updated and used as a potential assessment tool for geriatric clinics, hospitals, and clinical trials in a precision medicine approach.

Material and Method

Study Population. We used information on physical examinations, laboratory tests, and medical records collected for the participants of the Baltimore Longitudinal Study on Aging (BLSA), a cohort study of healthy aging in community-dwelling participants²⁹. For external validation, we used the Invecchiare in Chianti (InCHIANTI) aging study, a prospective population-based study of older persons in Tuscany, Italy (as reported previously)⁴². Study participants have provided consent form. The data are available through BLSA and InCHIANTI website applications.

The BLSA study recruited individuals ≥ 20 years who were followed quadrennially if younger than 60, biennially if 60–79, and yearly if ≥ 80 or who developed the disease at any age. Our analyses included 456 men and 451 women ($N=907$) with three available subsequent visits with dynamic intervals (mean $3.9 \pm$ SD 2.9 years) range (1-13) years of follow-ups. Mortality follow-up continued for 3.1 ± 2.3 , range 1-9 years after the last visit through 2019.

Body Organ Disease Number (BODN). We defined disease states for 11 organ systems, two distinct diseases, cerebrovascular accidents (CVA) and adult-onset cancer. CVA shares pathophysiology and symptoms between CVS and CNS, so to avoid any misclassification and as a distinct entity, it was counted as one system. With distinct mechanisms from other age-related processes, cancer of any organ was also considered separate from other organ system diseases.

The organ system diseases and the levels of diseases are summarized in Table 1.

BODN is determined as the number of organs with at least one impairment as a new measure of multimorbidity. Pathology at the specific organ level was established based on predefined impairment criteria aligned to those that either deviates from normal at a younger age or is used for disease diagnoses in clinical practice. A specific organ system contributed to BODN, a global health index if it had at least one positive criterion. We then assigned organ-specific diseases an

ordinal number for a level or stage of disease (e.g., no hypertension, hypertension with no treatment, and hypertension with treatment would be coded 1, 2, and 3, respectively; Table 1).

Statistical Analyses

Bayesian inference. We used a Bayesian approach in developing our new multimorbidity tool. We used BODN as an ordinal outcome and time-1 or time-2 disease levels as lagged ordinal predictors, adjusting for the time but excluding c-age. We used multilevel ordinal regression and individuals as model level in a Bayesian framework to develop various models⁴³, assessed the models' predictive accuracy using leave-one-out cross-validation (LOO-CV)²⁰, quantified model weights, and compared all models with c-age and the time. Including all disease levels in one model, we obtained post-analyses predicted BODN at individual levels to quantify individual-based Body Clock.

We evaluated the models using in-sample (using the BLSA parameters to predict BODN in simulated data) and out-of-sample accuracy (using BLSA parameters to predict BODN in InCHIANTI data) with “predictive checks,” as part of the usual Bayesian workflow^{44,45}. We then determined the model-specific weights, performed model comparisons using the Bayesian stacking approach, and compared all models' weights with the age-only model described in the supplementary information (SI). We used the Bayesian Cox-proportional hazard model to predict late-life age outcomes.

Bayesian Inference. A Bayesian model comprises two components: 1) Prior knowledge on the estimates (parameters), as the information before observing the data $P(\Theta)$ where Θ denotes the parameters; and 2) the likelihood $P(Y|\Theta)$ of the information contained in the data (Y). Using the Bayes formula, we can obtain the posterior distribution of the parameters $P(\Theta|Y)$, which can be updated when encountering new data. Moreover, the Bayes approach provides a distribution of

estimates rather than a point estimate, and uncertainty around the estimates known as the credible interval (CI).⁴⁶

Bayes Approach for Multilevel Ordinal Outcome and Ordinal Predictors. With ordinal outcomes, the difference between the orders might not be equidistance. In other words, moving from having one organ with at least one disease to the next organ with disease is not necessarily equal to moving from having two or three organ morbidities to the next organ morbidity. We used a Bayesian ordinal model that assumes the observed ordinal outcome Y (i.e., BODN) is derived from categorizing a latent continuous variable \tilde{Y} , here $\widetilde{\text{BODN}}$ ⁴³. Therefore, we used longitudinal, multilevel ordinal regression models with BODN as an ordinal outcome and each person as a level using “brms” Bayesian software package, built on top of Stan, a probabilistic programming framework for Bayesian inference^{45,47-49}. Also, considering that the levels of ordinal predictors might not be equidistant, we used a function called “monotonic effect” implemented in the Bayesian “brms” software package published previously^{47,50}, which assume that the ordinal predictor is a latent continuous variable with a posterior estimate (total beta coefficient for the ordinal variable). When encountering information from the data, a cut-point is introduced using the “simplex function” ζ , so that $\zeta_i \in [0,1]$. Therefore, ζ is the posterior probability of each level, and i is the number of ordinal categories. We can quantify the posterior estimate (beta coefficient) of each disease level through multiplying the total posterior estimate by the proportion of each level ζ_i , e.g., HTN has three levels, the first level is the reference [normal]; the second and the third level proportions are $\zeta_1\%$ and $1-\zeta_1\%$, respectively. With the posterior estimate Θ (total beta coefficient) of the latent continuous HTN, the posterior estimate of each HTN level would be $(\Theta * \zeta_1\%)$ and $(\Theta * 1 - \zeta_1\%)$, respectively⁵⁰. Except peripheral artery

disease (PAD), hyperthyroidism, cancer, thrombocytopenia, and asthma, which are binary, all other diseases are ordinal (Table 1).

Using all disease-level burdens, we obtained predicted BODN for each individual as a level, termed *Body Clock* at each time-point and change in Body Clock over time. We used change in Body Clock to predict late-life outcomes such as Short Battery of Physical Performance (SBPP), geriatric syndrome, disability and mortality, using multilevel Cox-Hazard Models in Bayesian inference framework ²².

Prior Knowledge of Predictive Estimates of BODN. We determined the prior distribution for each parameter, including intercept and beta coefficients using weak priors. For the beta coefficients and intercepts classes, the prior estimate with a normal distribution (mean: $\mu = 0$, variance $\sigma = 10$), and for the class standard deviation (sd) related to varying subjects, the half-Cauchy (0,10) were used. The uniform prior with a Dirichlet distribution was used for ordinal predictors (i.e., (2, 2) for ζ_1 and ζ_2 [simplex parameters] for a three-level predictor).

We used a dynamic Hamiltonian Markov chain Monte Carlo (MCMC) algorithm ^{48,49} to obtain posterior draws. We performed the analyses with a minimum of five chains and a minimum of 5,000 iterations. We obtained mean posterior values from the posterior distribution of the parameter estimate Θ if the distributions were normal but reported median if not normal.

Model Inference Diagnostics. To assess the computational success and resulting inferences, we evaluated the convergence diagnostic R_{hat} and the effective sample size measures for each estimated parameter ⁵¹.

Model Comparisons. Each Bayesian model has its own predictive performance on a logarithmic scale called estimated log predictive density (ELPD). The ELPD estimates the predictive performance of future data, and its standard error (SE) quantifies the uncertainty in knowing the

future BODN exactly. Leave-one-out cross-validation (LOO-CV)⁵², a variant where each observation takes the role of the validation set in turn and leads to a natural single prediction approach, was used for each model evaluation and also for model comparisons. As MCMC is time-consuming, Pareto smoothed importance sampling (PSIS) was used for faster LOO-CV estimates⁵³. If the PSIS diagnostic indicated an unreliable PSIS estimate ($k > 0.7$), we used MCMC for a slower but more accurate computation. To compare each model with the age-only models, we used LOO-CV and comparison of models' ELPDs to obtain ELPD_DIFF, which shows ELPD differences between each model and the age-only models. The models with larger ELPD are optimal, and a negative ELPD_DIFF favors the first model in the comparison.

Model Evaluation and In-Sample and Out-of-Sample Predictive Checks. To assess the robustness of the model to predict BODN, we used the time-1 full model based on BLSA data to predict BODN in the InCHIANTI data as out-of-sample validation. We compared ELPDs of the models using LOO-CV. Additionally, we used “posterior predictive checking”⁴⁴ implemented in “brms” software package to compare the posterior predictive density of simulated data to density estimates of the observed data (in-sample evaluation of BLSA) or predict new data (InCHIANTI data; out-of-sample validation).

Bayesian Stacking Weights to Compare Models. Bayesian stacking is useful for computing model weights for several models simultaneously by optimizing the estimated LOO-CV predictive performance of the weighted model combinations.

Here we computed stacking weights for each kind of model paired with their corresponding age-only models (single-disease, single-system, stepwise multisystem, and full models separately). The Bayesian stacking approach provides the model-specific weights versus the age-only models and informs the models with the best predictive performance.

Acknowledgements

We appreciate BLSA and InCHIANTI study participants and investigators and staff. We acknowledge Dr. Stefania Bandinelli for InCHIANTI study data and Elisa Fabbri for her previous work on multimorbidity in BLSA and InCHIANTI. ShS Acknowledge Intramural Research program of National Institute of Aging for supporting her Special Volunteer research activities.

Shabnam Salimi is funded by NIA-B K01AG059898.

This research was supported in part by Intramural Research program of the National Institute of Health, National Institute on Aging.

References

1. Rocca, W.A., *et al.* Prevalence of multimorbidity in a geographically defined American population: patterns by age, sex, and race/ethnicity. *Mayo Clin Proc* **89**, 1336-1349 (2014).
2. Salive, M.E. Multimorbidity in older adults. *Epidemiol Rev* **35**, 75-83 (2013).
3. Cesari, M., Perez-Zepeda, M.U. & Marzetti, E. Frailty and Multimorbidity: Different Ways of Thinking About Geriatrics. *J Am Med Dir Assoc* **18**, 361-364 (2017).
4. St Sauver, J.L., *et al.* Risk of developing multimorbidity across all ages in an historical cohort study: differences by sex and ethnicity. *BMJ Open* **5**, e006413 (2015).
5. Fabbri, E., *et al.* Aging and Multimorbidity: New Tasks, Priorities, and Frontiers for Integrated Gerontological and Clinical Research. *J Am Med Dir Assoc* **16**, 640-647 (2015).
6. Ferrucci, L., *et al.* Measuring biological aging in humans: A quest. *Aging Cell* **19**, e13080 (2020).
7. Kennedy, B.K., *et al.* Geroscience: linking aging to chronic disease. *Cell* **159**, 709-713 (2014).
8. Fabbri, E., *et al.* Aging and the burden of multimorbidity: associations with inflammatory and anabolic hormonal biomarkers. *J Gerontol A Biol Sci Med Sci* **70**, 63-70 (2015).
9. Wei, M.Y., Kabeto, M.U., Langa, K.M. & Mukamal, K.J. Multimorbidity and Physical and Cognitive Function: Performance of a New Multimorbidity-Weighted Index. *J Gerontol A Biol Sci Med Sci* **73**, 225-232 (2018).
10. van Walraven, C., Austin, P.C., Jennings, A., Quan, H. & Forster, A.J. A modification of the Elixhauser comorbidity measures into a point system for hospital death using administrative data. *Med Care* **47**, 626-633 (2009).

11. Moore, B.J., White, S., Washington, R., Coenen, N. & Elixhauser, A. Identifying Increased Risk of Readmission and In-hospital Mortality Using Hospital Administrative Data: The AHRQ Elixhauser Comorbidity Index. *Med Care* **55**, 698-705 (2017).
12. Liu, Z., *et al.* A new aging measure captures morbidity and mortality risk across diverse subpopulations from NHANES IV: A cohort study. *PLoS Med* **15**, e1002718 (2018).
13. Belsky, D.W., *et al.* Quantification of biological aging in young adults. *Proc Natl Acad Sci U S A* **112**, E4104-4110 (2015).
14. Rockwood, K., McMillan, M., Mitnitski, A. & Howlett, S.E. A Frailty Index Based on Common Laboratory Tests in Comparison With a Clinical Frailty Index for Older Adults in Long-Term Care Facilities. *J Am Med Dir Assoc* **16**, 842-847 (2015).
15. Li, X., *et al.* Longitudinal trajectories, correlations and mortality associations of nine biological ages across 20-years follow-up. *Elife* **9**(2020).
16. Rockwood, K., Andrew, M. & Mitnitski, A. A comparison of two approaches to measuring frailty in elderly people. *J Gerontol A Biol Sci Med Sci* **62**, 738-743 (2007).
17. Rutenberg, A.D., Mitnitski, A.B., Farrell, S.G. & Rockwood, K. Unifying aging and frailty through complex dynamical networks. *Exp Gerontol* **107**, 126-129 (2018).
18. Pilotto, A., Addante, F., D'Onofrio, G., Sancarlo, D. & Ferrucci, L. The Comprehensive Geriatric Assessment and the multidimensional approach. A new look at the older patient with gastroenterological disorders. *Best Pract Res Clin Gastroenterol* **23**, 829-837 (2009).
19. Whitty, C.J.M. & Watt, F.M. Map clusters of diseases to tackle multimorbidity. *Nature* **579**, 494-496 (2020).

20. Vehtari A., Gelman, A., Gabry, J. Practical bayesian model evaluation using leave-one-out cross-validation and WAIC. *Statistics and Computing* **27**, 1413-1432 (2017).
21. Yao, Y., Vehtari, A., Simpson, D. & Gelman, A. Using stacking to average Bayesian predictive distributions. *Bayesian Analysis* **13**, 917–1003 (2018).
22. Brilleman, S. L., Elic, E. M., Novik, J. B. & Wolfe, R. Bayesian Survival Analysis Using the rstanarm R Package. *arXiv:2002.09633* (2020).
23. Guralnik, J.M., *et al.* A short physical performance battery assessing lower extremity function: association with self-reported disability and prediction of mortality and nursing home admission. *J Gerontol* **49**, M85-94 (1994).
24. Guralnik, J.M., LaCroix, A.Z., Branch, L.G., Kasl, S.V. & Wallace, R.B. Morbidity and disability in older persons in the years prior to death. *Am J Public Health* **81**, 443-447 (1991).
25. Inouye, S.K., Studenski, S., Tinetti, M.E. & Kuchel, G.A. Geriatric syndromes: clinical, research, and policy implications of a core geriatric concept. *J Am Geriatr Soc* **55**, 780-791 (2007).
26. Charlson, M.E., *et al.* The Charlson comorbidity index is adapted to predict costs of chronic disease in primary care patients. *J Clin Epidemiol* **61**, 1234-1240 (2008).
27. Salvi, F., *et al.* A manual of guidelines to score the modified cumulative illness rating scale and its validation in acute hospitalized elderly patients. *J Am Geriatr Soc* **56**, 1926-1931 (2008).
28. Fried, L.P., *et al.* Nonlinear multisystem physiological dysregulation associated with frailty in older women: implications for etiology and treatment. *J Gerontol A Biol Sci Med Sci* **64**, 1049-1057 (2009).

29. Kuo, P.L., *et al.* A roadmap to build a phenotypic metric of ageing: insights from the Baltimore Longitudinal Study of Aging. *J Intern Med* **287**, 373-394 (2020).
30. Wei, M.Y., Ratz, D. & Mukamal, K.J. Multimorbidity in Medicare Beneficiaries: Performance of an ICD-Coded Multimorbidity-Weighted Index. *J Am Geriatr Soc* **68**, 999-1006 (2020).
31. Marsh, A.P., *et al.* Hospitalizations During a Physical Activity Intervention in Older Adults at Risk of Mobility Disability: Analyses from the Lifestyle Interventions and Independence for Elders Randomized Clinical Trial. *J Am Geriatr Soc* **64**, 933-943 (2016).
32. Calderon-Larranaga, A., *et al.* Multimorbidity and functional impairment-bidirectional interplay, synergistic effects and common pathways. *J Intern Med* **285**, 255-271 (2019).
33. Levine, M.E. Modeling the rate of senescence: can estimated biological age predict mortality more accurately than chronological age? *J Gerontol A Biol Sci Med Sci* **68**, 667-674 (2013).
34. Pfeffer, M.A., Shah, A.M. & Borlaug, B.A. Heart Failure With Preserved Ejection Fraction In Perspective. *Circ Res* **124**, 1598-1617 (2019).
35. Klausner, S.C. & Schwartz, A.B. The aging heart. *Clin Geriatr Med* **1**, 119-141 (1985).
36. Monfredi, O. & Boyett, M.R. Sick sinus syndrome and atrial fibrillation in older persons - A view from the sinoatrial nodal myocyte. *J Mol Cell Cardiol* **83**, 88-100 (2015).
37. Menezes, S.T., *et al.* Hypertension, Prehypertension, and Hypertension Control: Association With Decline in Cognitive Performance in the ELSA-Brasil Cohort. *Hypertension* **77**, 672-681 (2020).

38. Weiner, D.E., *et al.* Cognitive Function and Kidney Disease: Baseline Data From the Systolic Blood Pressure Intervention Trial (SPRINT). *Am J Kidney Dis* **70**, 357-367 (2017).
39. Rapp, S.R., *et al.* Effects of intensive versus standard blood pressure control on domain-specific cognitive function: a substudy of the SPRINT randomised controlled trial. *Lancet Neurol* **19**, 899-907 (2020).
40. Yang, M. & Williamson, J. Blood Pressure and Statin Effects on Cognition: a Review. *Curr Hypertens Rep* **21**, 70 (2019).
41. Zampino, M., AlGhatrif, M., Kuo, P.L., Simonsick, E.M. & Ferrucci, L. Longitudinal Changes in Resting Metabolic Rates with Aging Are Accelerated by Diseases. *Nutrients* **12**(2020).
42. Ferrucci, L., *et al.* Subsystems contributing to the decline in ability to walk: bridging the gap between epidemiology and geriatric practice in the InCHIANTI study. *J Am Geriatr Soc* **48**, 1618-1625 (2000).
43. Bürkner, P. C., Charpentier, E. Ordinal Regression Models in Psychology: A Tutorial. *Advances in Methods and Practices in Psychological Science* **2**, 77-101 (2019).
44. Gabry, J., Simpson, D., Vehtari, A., Betancourt, M., Gelman, A. Visualization in Bayesian workflow. *Journal of the Royal Statistical Society Series A* **182**, 389-402 (2019).
45. Gelman, A., Carlin, J. B., Stern, H., Dunson, D. B, Vehtari, A. & Rubin, B. *Bayesian Data Analysis*, (Chapman & Hall, 2014).
46. McElreath, R. *Statistical Rethinking: A Bayesian Course with Examples in R and Stan*, (Chapman and Hall/CRC, USA, 2016).

47. Bürkner P. C. Advanced Bayesian Multilevel Modeling with the R Package brms *The R Journal*, 10(1), 395–411 **10**(2018).
48. Carpenter B, Gelman, A., Hoffman, M.D., Lee, D., Goodrich, B., Betancourt & M., Riddell, A. Stan: A probabilistic programming language. *Journal of Statistical Software* **76**(2017).
49. Stan Development Team. Stan Modeling Language Users Guide. <https://mc-stan.org/users/documentation/>. (2020).
50. Bürkner, P. C., Charpentier, E. Modelling monotonic effects of ordinal predictors in Bayesian regression models. *British Journal of mathematical and Statistical Pscycology* (2020).
51. Vehtari, A., Gelman, A., Simpson, D., Carpenter, B. & Bürkner, P.C. Rank-normalization, folding, and localization: An improved R-hat for assessing convergence of MCMC. *Bayesian analysis*, 1-28 (2020).
52. Vehtari, A., Gelman, A., Gabry, J. Practical bayesian model evaluation using leave-one-out cross-validation and WAIC. *Statistics and Computing* **27** 1413–1432 (2017).
53. Vehtari, A., Simpson, D., Gelman, A., Yao, Y. & Gabry, J. Pareto smoothed importance sampling. *arXiv preprint arXiv:1507.02646* (2019).
54. Cichoż-Lach, H., *et al.* The BARD score and the NAFLD fibrosis score in the assessment of advanced liver fibrosis in nonalcoholic fatty liver disease. *Med Sci Monit* **18**, CR735-740 (2012).
55. Biondi, B., Cappola, A.R. & Cooper, D.S. Subclinical Hypothyroidism: A Review. *JAMA* **322**, 153-160 (2019).

Figures Legends

Figure 1. (a) Symbolic representation of the integrated system-based calculated Body Clock. Body organ disease number (BODN) considers 11 organs and two diseases, cerebrovascular accidents and cancer. The predicted BODN at an individual level is quantified, termed Body Clock. Clockwise, the Body Clock includes the central nervous system and cerebrovascular accidents, cardiovascular system, respiratory system, gastrointestinal and liver system, metabolic system, cancer, renal system, hematopoietic system, the sensory systems (ophthalmic and hearing), dysthyroidism, and musculoskeletal system. **(b)** Schematic of Body Clock Measurement. Time-1 full model provides estimates of longitudinal BODN (at three-time points, green arrows). Time-2 full model provides estimates of BODN at time 2 and 3 (blue arrows). The orange arrow shows change in Body Clock. The red arrows depict the effect of incorporation of future information on a new disease on the Body Clock.

Figure 2. Lagged full models' multisystem posterior estimates predicting longitudinal Body Organ Disease Number (BODN). The larger the posterior estimates with narrower 95% credible intervals (CI), the better the prediction is. **(a & b).** Total disease coefficient estimates, with 95% CI predicting BODN in the full models using Bayes approach at **a.** time-1 and **b.** time-2. Organ systems diseases have heterogeneous coefficient estimates predicting BODN. **(c & d).** Disease levels coefficient estimates heterogeneously incorporating into BODN at **(c)** time-1 and **(d)** time-2 full models. The significance is considered when 95% CI does not include 0. HTN: hypertension, IHD: ischemic heart disease, CHF: congestive heart failure, PAD: peripheral artery disease, Arr: arrhythmia, CKD: chronic kidney disease, DM: diabetes mellitus, GID: gastrointestinal disease, COPD: chronic obstructive pulmonary disease, Hypoth: hypothyroidism, Hyperth: Hyperthyroidism, OA: Osteoarthritis, Oteop: Osteoporosis, Periodon: periodontitis, Dep: Depression, Park: Parkinson's disease, CI: cognitive impairment. Systems abbreviations: CV: cardiovascular system, CA: cerebrovascular accidents, Re: renal system, Me: metabolic, GL: gastrointestinal and liver, Res: respiratory, Th: dysthyroidism, He: hematopoietic, MS: musculoskeletal, Pe: periodontitis, Se: sensory, CNS: central nervous system, Can: Cancer.

Figure 3. Bayesian Stacking weights for time-1 and time-2 models compared to the age-only model. **(a)** Time-1 model weights for every single disease compared to age-only model weight predicting BODN. **(b)** Similar comparisons for time-2 models. **(c)** Time-1 single-system model weight versus age-only model. **(d)** Similar comparisons for time-2 models. C-age weight outperformed single disease and single organ-system weights. In time-2 models, when people were older, the age-only model outweighed single disease even more than time-1 (younger age). **(e)** Time-1 stepwise multiple organ-system weights versus age-only model. **(f)** Similar comparisons for time-2 models. Time-2 full model outweighed c-age the most, indicating the global burden of organ-system diseases measure the rate of aging better than any single disease or single system. CHF: congestive heart failure, CKD: Chronic Kidney disease, COPD: Chronic Obstructive Pulmonary Disease, DM: diabetes mellitus, GID: gastrointestinal disease, IHD: ischemic heart disease, PAD: peripheral artery disease, CNS: central nervous system, CVA: cerebrovascular disease, CVD: cardiovascular disease, GL: gastrointestinal and Liver, Hemat: hematopoietic system, MSK: musculoskeletal system, Periodent: periodontitis, Res: respiratory system, Th: Dysthyroidism. The numbers in graphs e and f indicates the number of systems with morbidities in Body Organ Disease Number (BODN).

Figure 4. Body Clock and chronological age. **(a)** Body Clock using time-1 organ-system disease levels predicting longitudinal BODN. **(b)** Body Clock using time-2 organ-system disease levels predicting BODN. The spaghetti plots show individual-based integrated predicted estimates of BODN as sporadic lines (Body Clock). The quadratic spline regression line (purple overlay) with a 95% credible interval is a population-based Body Clock in men (left) and women (right). Body Clock increased with advancing age, even in younger age groups with substantial interindividual variability. **(c)** Random effect of age on change in the Body Clock. There are within the same age and between age variability in Body Clock. The random variability of the Body Clock within the same age is significant after age 67.

Figure 5. Density Distribution of Estimated Body Clock by Mortality, Geriatric Syndrome, Disability, and Functional Decline (SPPB < 9). The distribution of Body Clock with a. Short Battery of Physical Performance (SPPB) < 9, b. Geriatric Syndrome, c. disability (Activity of daily living (ADL) or instrumental activity of daily living (iADL), and d. mortality as binary outcomes using the Cox model in the Bayes Framework. An average Body Clock of more than 7.0 is highly significant in all models. However, some individuals have the resilience to developing these late-life outcomes even at larger Body Clock values. In all graphs, the gray area is the normal state of the corresponding late-life outcome.

Table 1: Body Organs and The Corresponding Disease Levels Definitions Based on Disease Severity or Stage

Cardiovascular System (CVS)	
Hypertension (HTN; 1-3)	<p>1: No HTN</p> <p>2: SBP>140; DBP>90 or documented history of HTN and no medication</p> <p>3: SBP>140; DBP>90 or documented history of HTN and medication</p> <p>HTN: medication (hydroxydines calcium channel blocker (CCB), diuretics, angiotensin converting enzyme inhibitors, beta blockers, and other antihypertensive drugs)</p>
Ischemic Heart Disease (IHD; 1-3)	<p>1: No IHD</p> <p>2: History of prolonged angina pectoris, angioplasty, or coronary artery bypass surgery (CABG)</p> <p>3: Myocardial infarction (significant q wave on EKG, documented history of myocardial infarction, or nitrate medication)</p>
Congestive Heart Failure (CHF; 1-3)	<p>1: No CHF</p> <p>2: CHF with preserved ejection fraction (EF)</p> <p>3: EF < 50 or history of heart failure and use of digitalis, non-hydroxydines CCB</p>
Arrhythmia Based on Electrocardiogram, (EKG; 1-6)	<p>1: No arrhythmia</p> <p>2: Sinus bradycardia</p> <p>3: Elongated QTC (> 440 ms in men or > 460 ms in women)</p> <p>4: Elongated P-R interval >200 m-second</p> <p>5: Supraventricular, ventricular, or paroxysmal atrial tachyarrhythmia</p> <p>6: Atrial fibrillation</p>
Peripheral Artery Disease (PAD; 1-2)	<p>1: No PAD</p> <p>2: Left or right ankle brachial index (ABI) < 0.9</p>
Cerebrovascular Accident (CVA)	

Stroke (1-4)	<p>1: No stroke</p> <p>2: TIA with no history of severe stroke</p> <p>3: History of documented stroke, elongated sudden numbness, or loss of speech with no paralysis or limb weakness</p> <p>4: Paralysis or paresis in either limbs or any sudden and long lasting of motor neuron dysfunction such as cranial nerve (CN) CN-III, CN-IV, CN-VI (ocular movements, nystagmus and ocular convergence); CN-IX (Oropharynx symmetry); CN-VII (Facial asymmetry)</p>
Renal (Ren)	
Chronic Kidney Disease (CKD; 1-5) Using CKD-EPI formula	<p>1: Estimated glomerular filtration rate (eGFR) > 90 (no CKD)</p> <p>2: Stage-1: $60 \leq eGFR \leq 90$</p> <p>3: Stage-2: $45 \leq eGFR \leq 59$</p> <p>4: Stage-3: $30 \leq eGFR \leq 44$</p> <p>5: Stage-4: $eGFR \leq 29$</p>
Metabolic (Me)	
Diabetes Mellitus (DM;1-6)	<p>1: No DM</p> <p>2: Impaired glucose tolerance test (140 at ≤ 2 hr postprandial blood sugar ≤ 199 (mg/dL)</p> <p>3: DM with no complications</p> <p>4: DM with CKD no retinopathy</p> <p>5: DM with retinopathy no CKD</p> <p>6: DM with both CKD and retinopathy</p>
Hyperlipidemia (1-3)	<p>1: No hyperlipidemia</p>

	<p>2: Triglyceride (TG) >150 mg/dL, low density cholesterol (LDL) > 130 mg/dL, high density cholesterol (HDL) < 40 mg/dL for men and < 50 mg/dL for women, and no medication</p> <p>3: TG > 150 mg/dL, LDL > 130 mg/dL, HDL < 40 mg/dL for men and < 50 mg/dL for women, and medication</p>
Gastrointestinal and Liver (GL)	
Liver (1-3)	<p>1: No liver disease</p> <p>2: History of hepatitis or increased liver function tests 2 times more than normal range</p> <p>3: Liver fibrosis (based on FIB4 scoring system)⁵⁴</p> <p>4: Liver cirrhosis</p>
Gastrointestinal disease (GID; 1-3)	<p>1: No GID</p> <p>2: Gastritis or gastroesophageal reflux disorder (GERD)</p> <p>3: History of peptic ulcer, current ulcer, or use of antacid medication</p>
Respiratory (Res)	
Chronic Obstructive Pulmonary Disease (chronic bronchitis or emphysema) (COPD; 1-3)	<p>1: No COPD</p> <p>2: Wheeze with physical exam (Yale criteria) and no medication use</p> <p>3: Wheeze with physical exam (Yale criteria) and use of medication (adrenergic drugs, leukotriene receptor antagonists, or others)</p>
Adult-Onset Asthma (1-2)	<p>1: No asthma</p> <p>2: Documented adult onset, still having asthma</p>
Dysthyroidism (Th)	

Hypothyroidism ⁵⁵ (1-4)	1: Euthyroid 2: Subclinical hypothyroidism: $4.5 \leq \text{thyroid stimulating hormone (TSH)} \leq 6.9$ 3: $7.0 \leq \text{TSH} \leq 9.9$ 4: $\text{TSH} \geq 10$ or use of levothyroxine
Hyperthyroidism (1-2)	1: Euthyroid 2: $\text{TSH} < 0.3$ or use of thiouracil or other antithyroid medication
Hematopoietic System (He)	
Anemia (1-4)	1: No anemia 2: Mild anemia (women: $11.0 \leq \text{Hemoglobin (Hb)} < 12$; men: $11.0 \leq \text{Hb} < 13$) 3: Moderate anemia: $8.0 \leq \text{Hb} < 11$ 4: Severe anemia $\text{Hb} < 8.0$ (rarely seen in population studies)
Thrombocytopenia (1-2)	1: Normal platelet count 2: Platelet count $< 150,000$ without cancer or liver disease states
Oral Health (Periodontitis: Pe)	
Periodontitis (1-3)	1: Normal 2: Gingivitis or periodontitis 3: Edentulous, $>50\%$ tooth loss due to periodontitis
Musculoskeletal System (MS)	
Osteoarthritis (OA)	1: No OA 2: Pain more than 1 month or stiffness but not both, at either knee or hip joints 3: Both pain and stiffness at the knee or hip joints
Osteoporosis (based on bone mineral density (BMD), total BMD)	1: Normal bone mineral density 2: Osteopenia (BMD score < -1.0) 3: Osteoporosis (BMD score < -2.5)

at either vertebrae L1-4, femoral neck, or trochanter; 1-3)	
Sensory System (Se)	
Hearing (1- 4)	1: Normal hearing 2: Decreased hearing ability from poor to deaf without a hearing aid 3: Normal to fair hearing ability with a hearing aid 4: Poor hearing with a hearing aid
Eye (1-5)	1: Normal eye function 2: Cataract but no glaucoma or macular degeneration 3: Glaucoma but no macular degeneration 4: Macular degeneration but no glaucoma 5: Glaucoma and macular degeneration
Central Nervous System (CNS)	
Depression (1-3) CES-D: Center for Epidemiologic Studies Depression Scale (CES-D)	1: No depression 2: CES-D scores ≥ 16 but no use of antidepressants. 3: CES-D score ≥ 16 and use of antidepressants
Parkinson's Disease (PD; 1-3)	1: No Parkinson's 2: Documented history of PD (Hoehn and Yahr scale), mild symptoms, stage ≤ 3 or no medication 3: Stage 4 or 5 PD, moderate to severe symptoms or use of medication

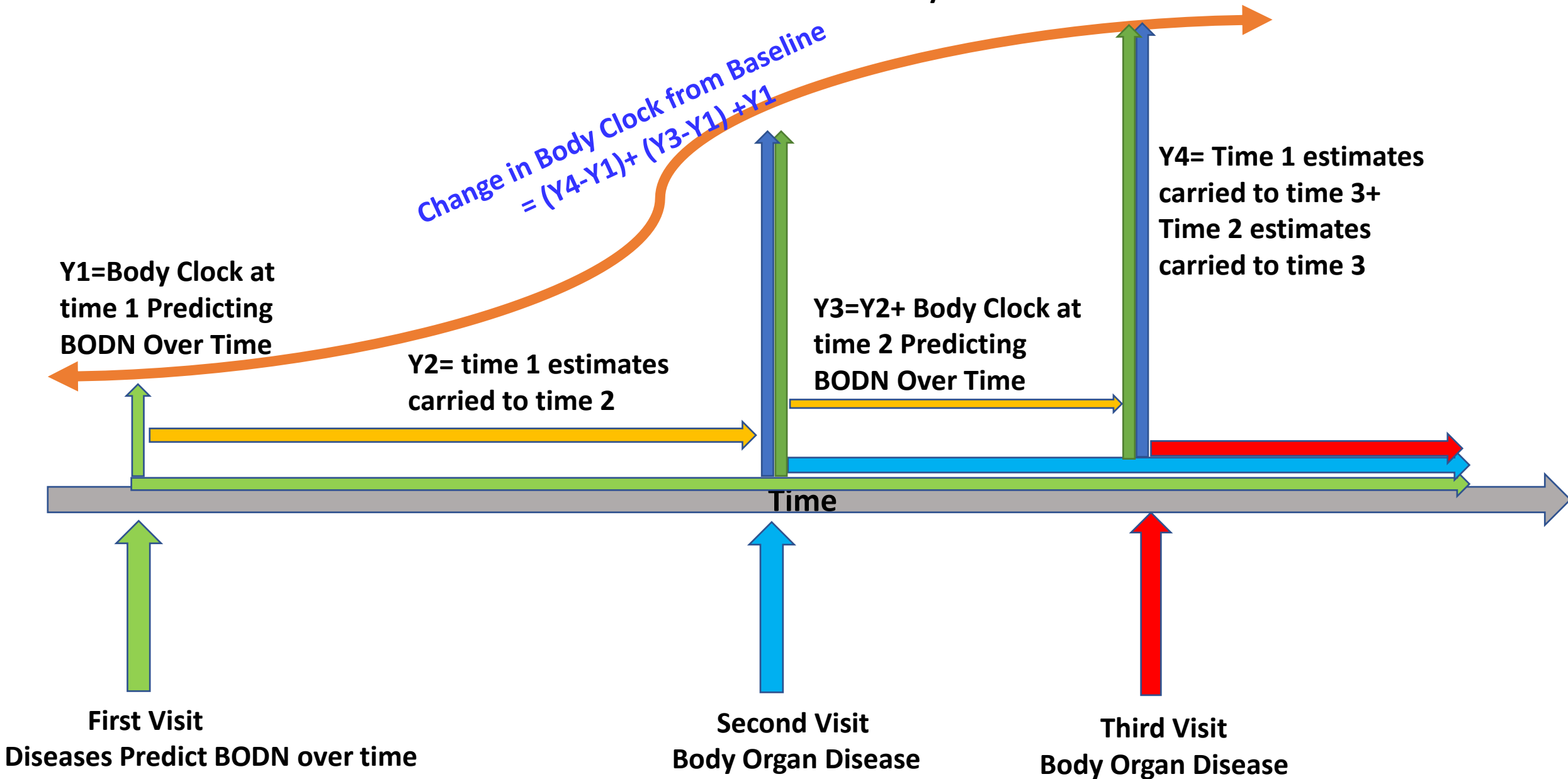
Global Cognitive Impairment (CI; 1-3)	1: Normal global cognition 2: Total mini mental status (TMMS) < 24 3: Documented Alzheimer’s disease (combined medical examinations) *Vascular dementia is part of cerebrovascular accident
Cancer (Can)	
Lung, Breast, Prostate, Stomach, Pancreatic, Leukemia, Thyroid, Ovary, Squamous Cell Carcinoma, melanoma	1: No cancer 2: At least one adult-onset cancer
Late-life Outcomes	
Disability	instrumental activities of daily living (iADL) ≥ 2 or activity of daily living (ADL) >1
Geriatric Syndrome	Experienced two injurious falls in past month, urinary or bowel incontinence
Functional decline SPPB < 9	Short Battery of Physical Performance, which includes chair standing (1-4), walking speed (1-4), and balance (1-4) with total score ≥ 12
Mortality	Mortality any time after data used in this analysis

BODY



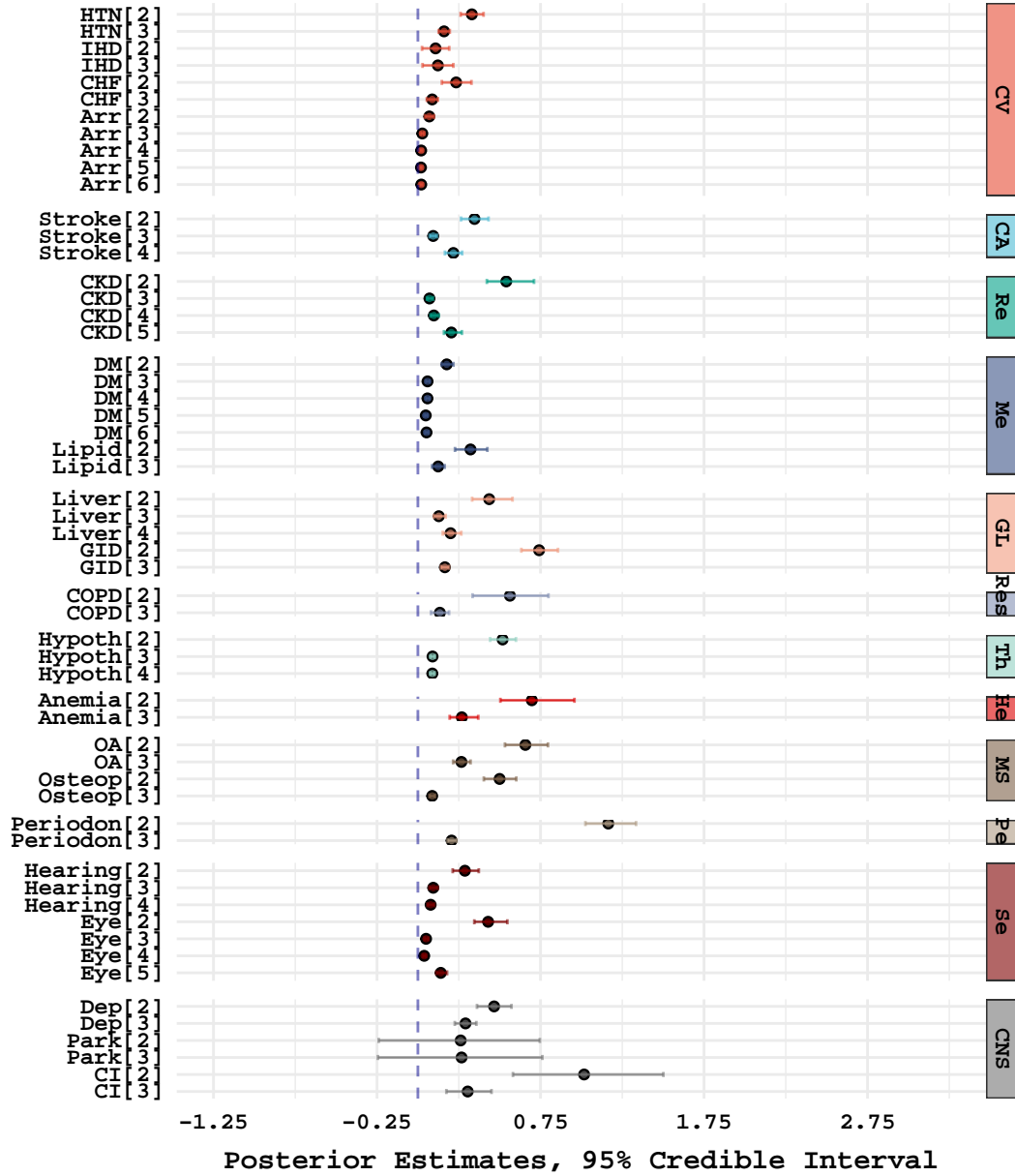
CLOCK

Time-1 and Time-2 Lagged Estimates Of Diseases Levels Predicting BODN Over Time At Individual Level: Body Clock



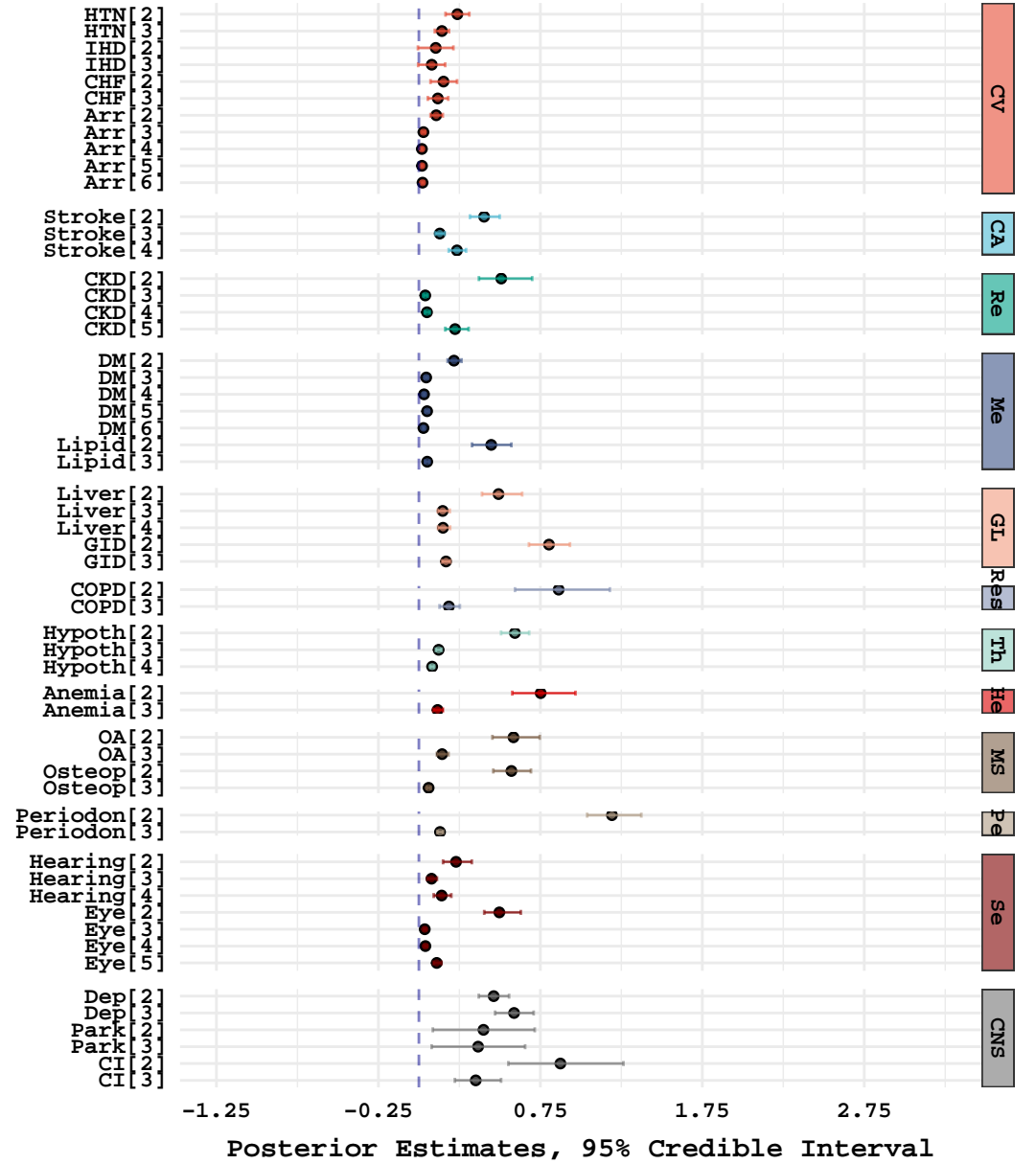
c.

Time-1 Multisystems' Levels Predicting BODN



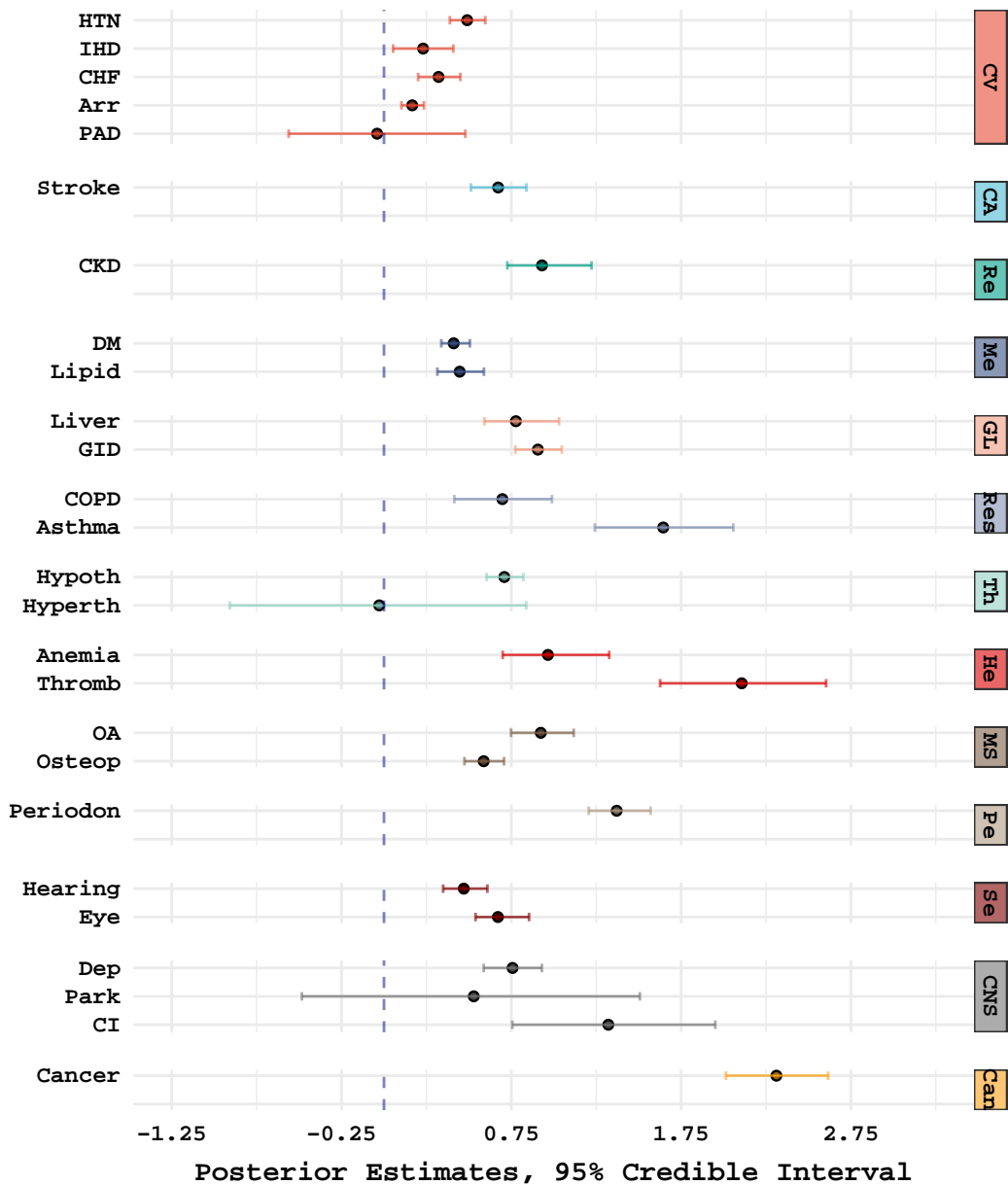
d.

Time-2 Multisystems' Levels Predicting BODN



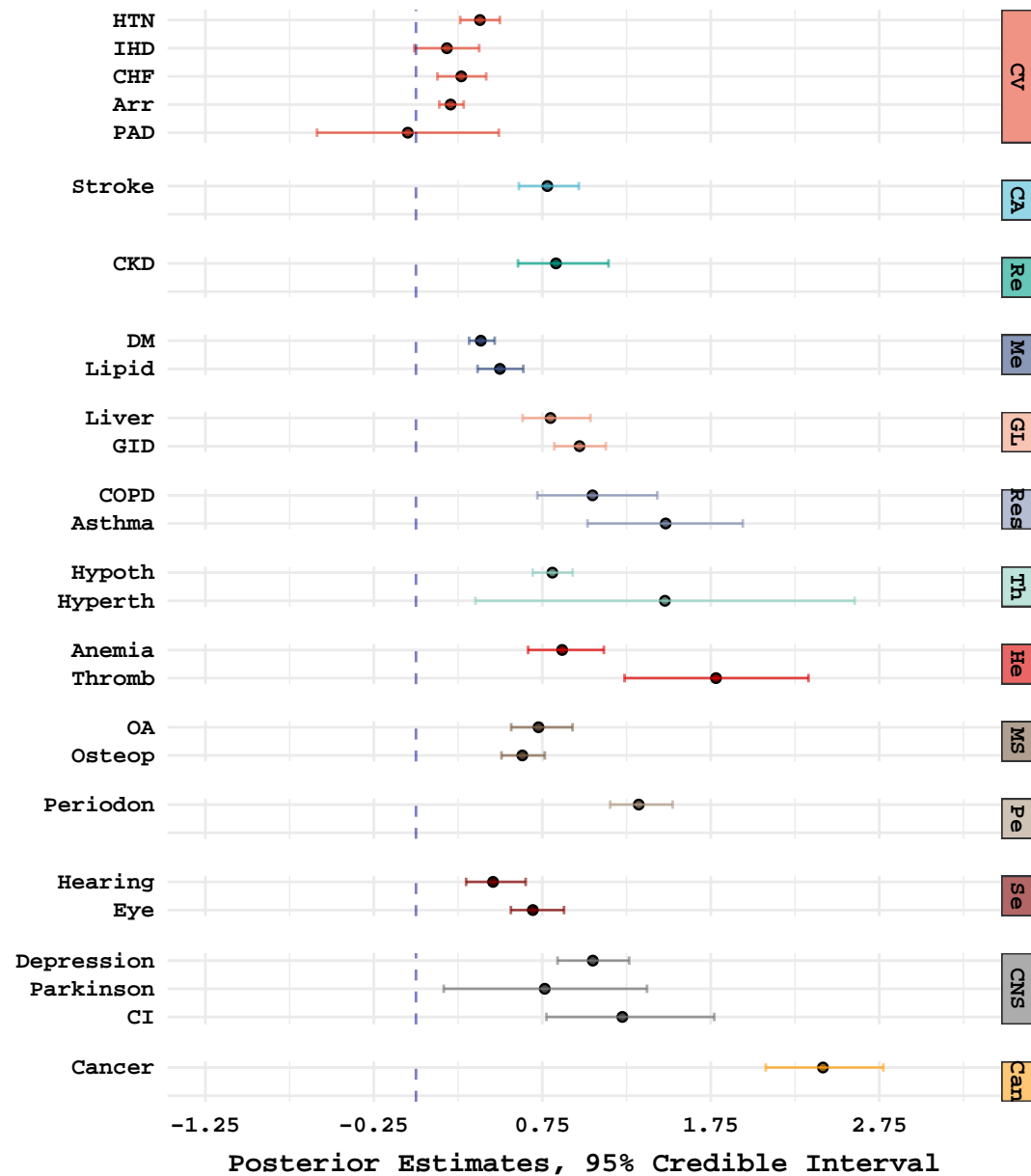
a.

Time-1 Multisystems' Diseases Predicting BODN



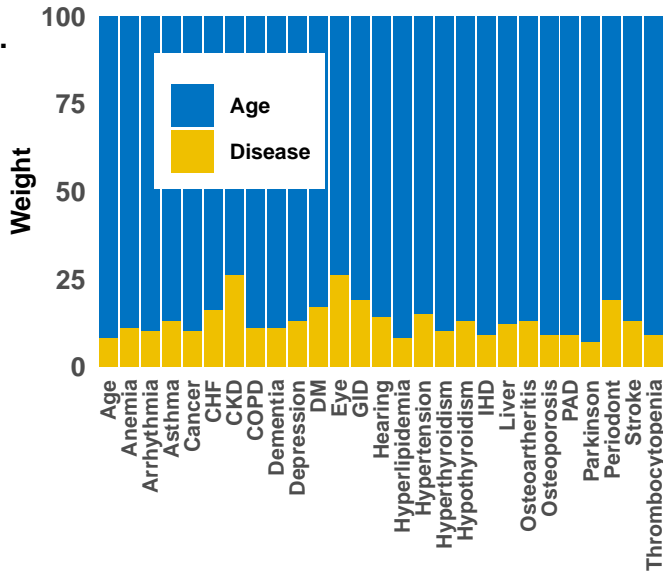
b.

Time-2 Multisystems' Diseases Predicting BODN

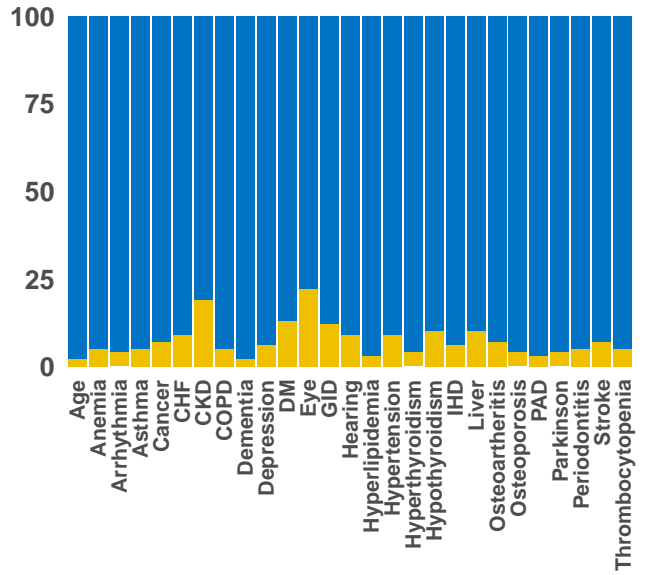


Single Disease, Single System, and Multiplesystem Weights Vs. Age-only Weight Predicting BODN

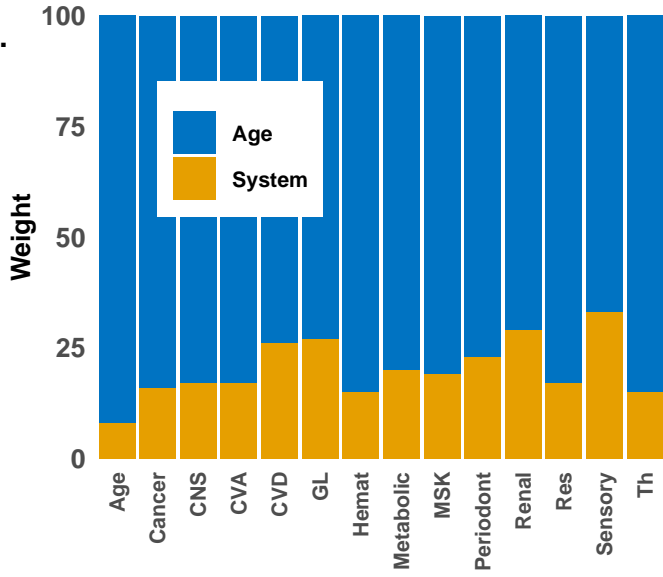
a.



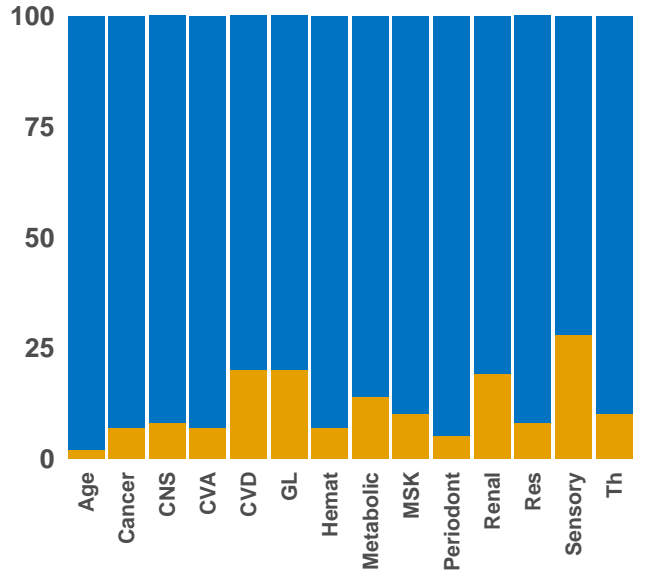
b.



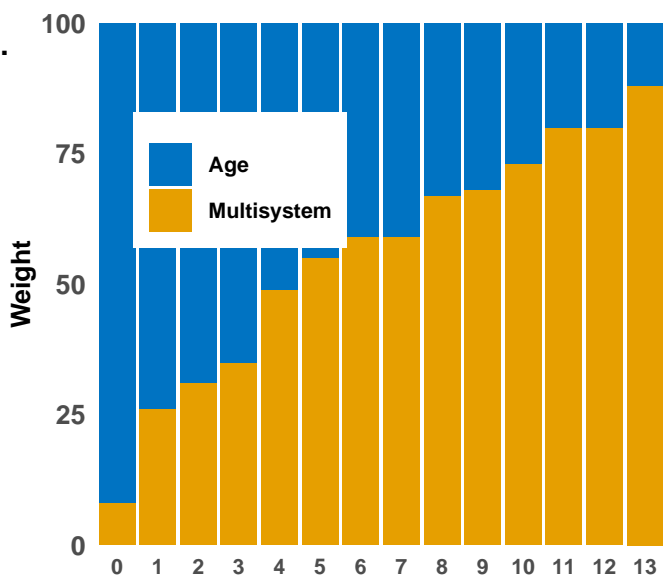
c.



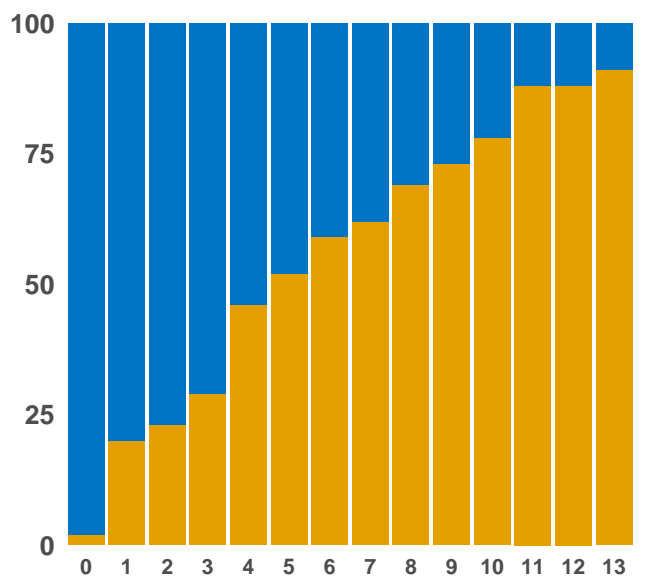
d.



e.

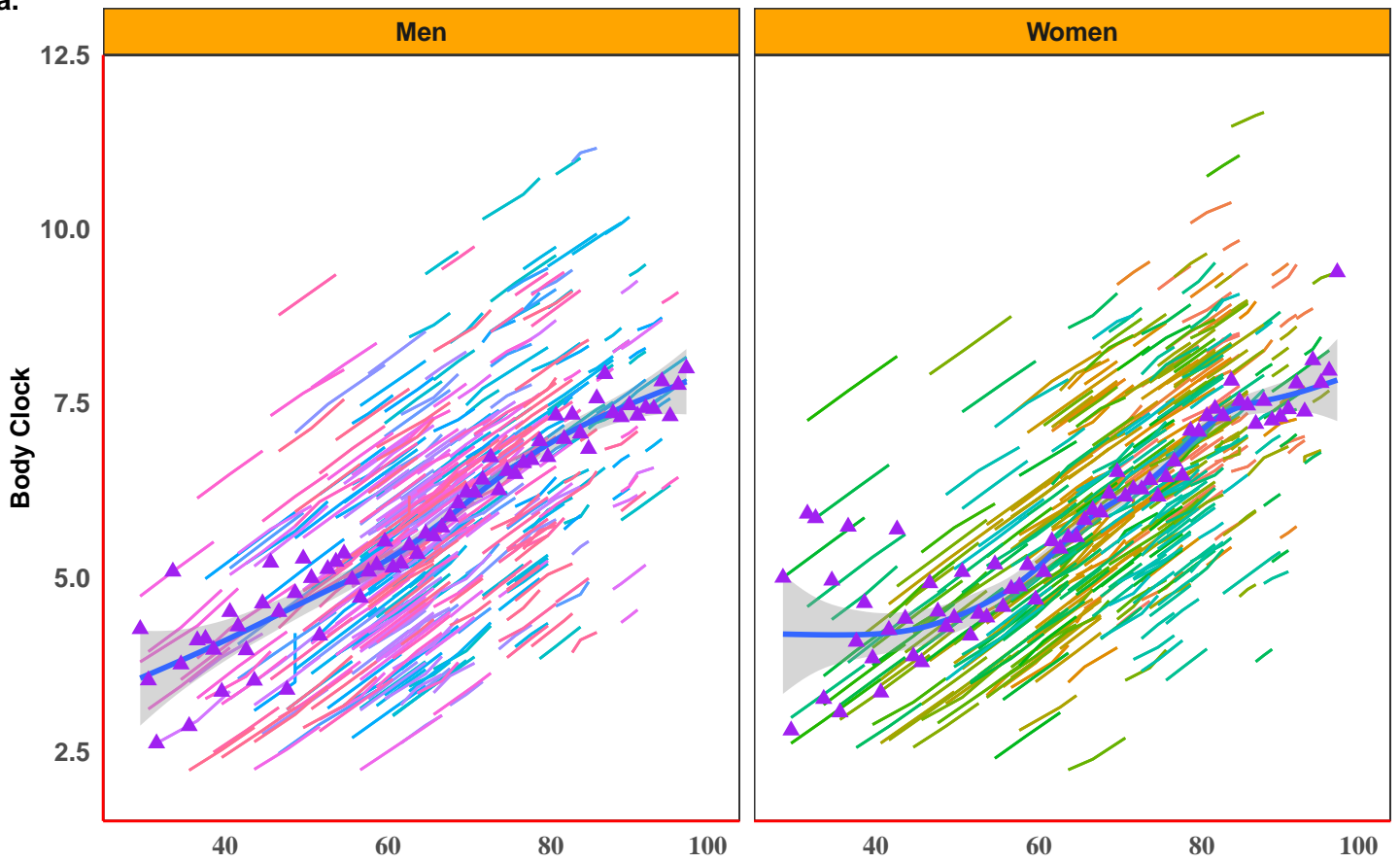


f.

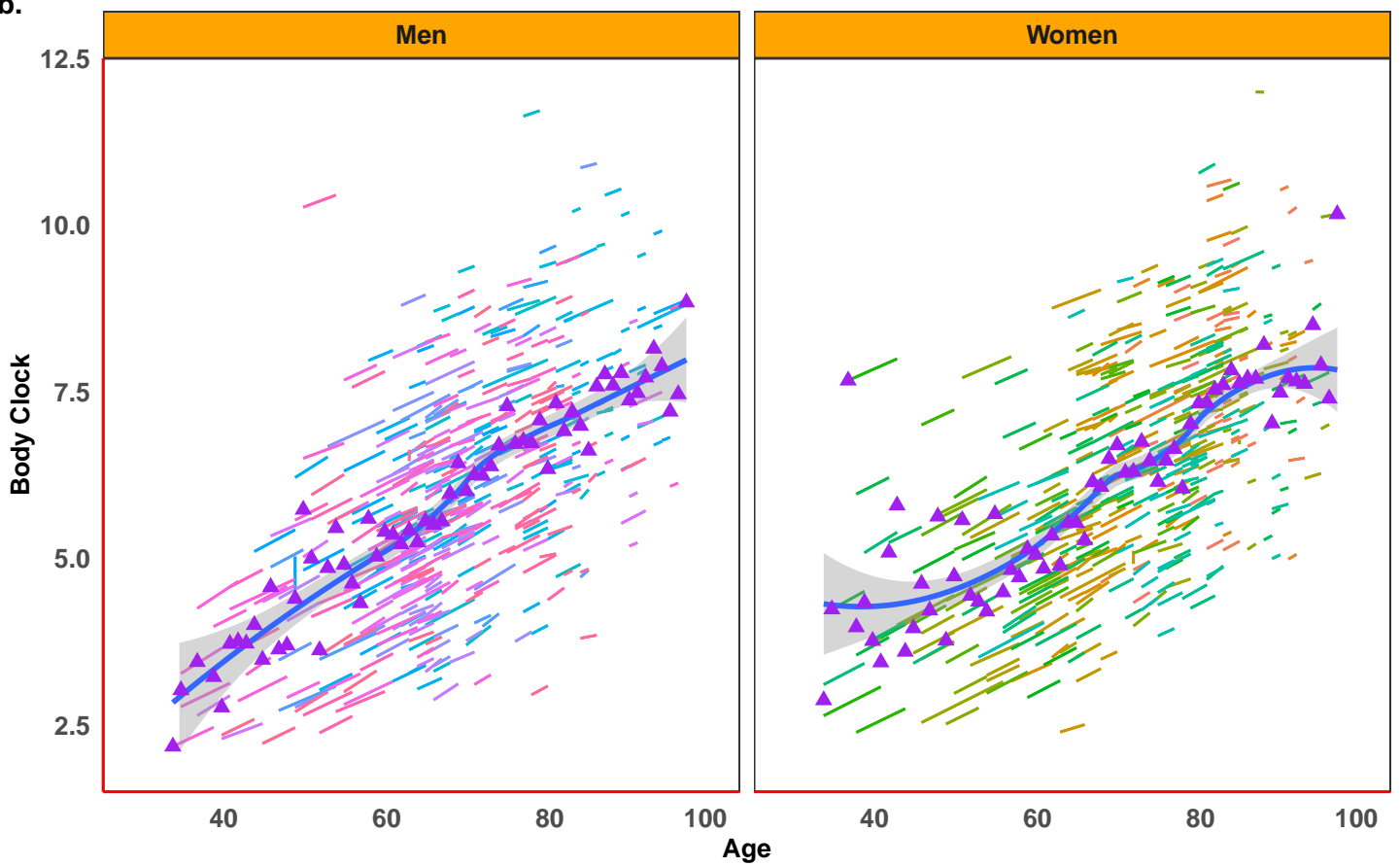


Time-1 and Time-2 Body Clock Over the Age Spectrum

a.

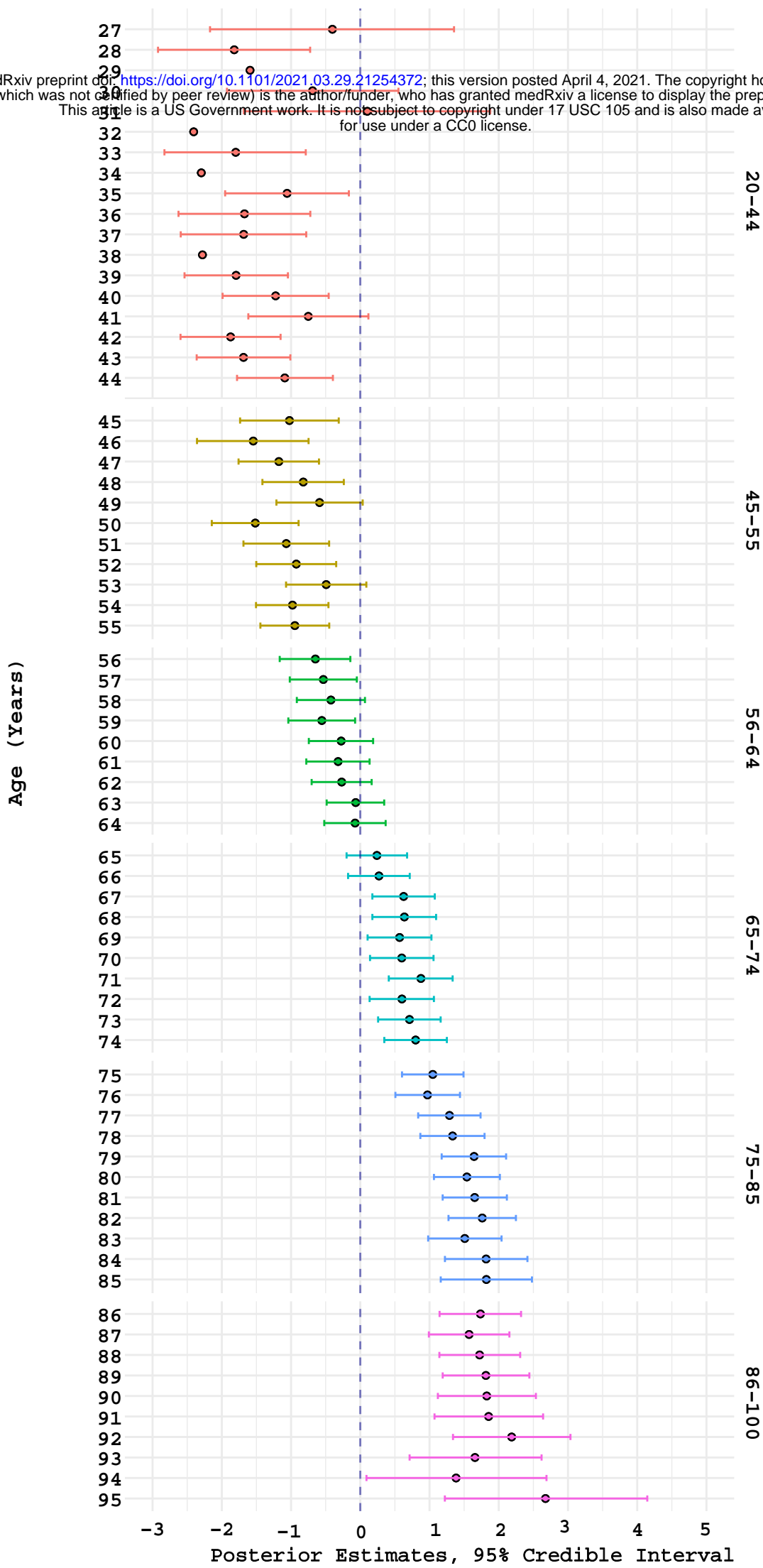


b.

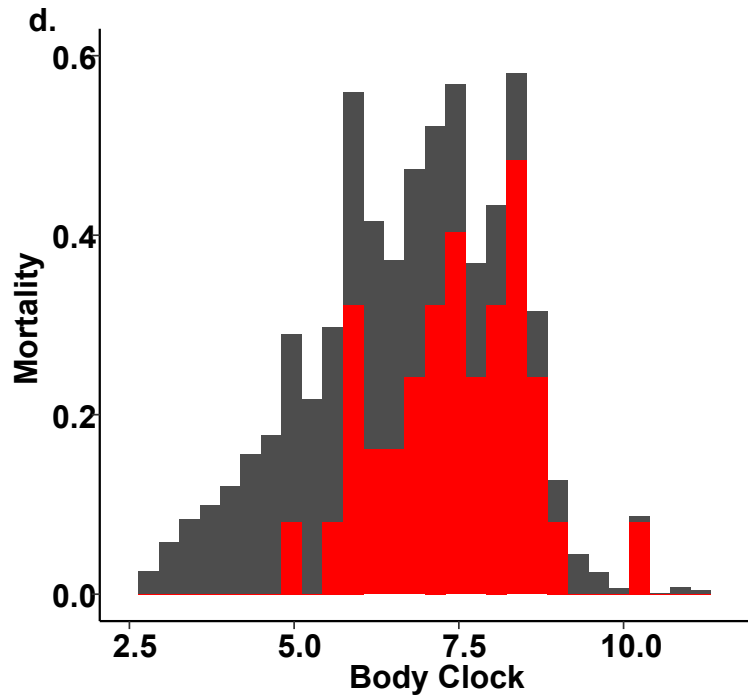
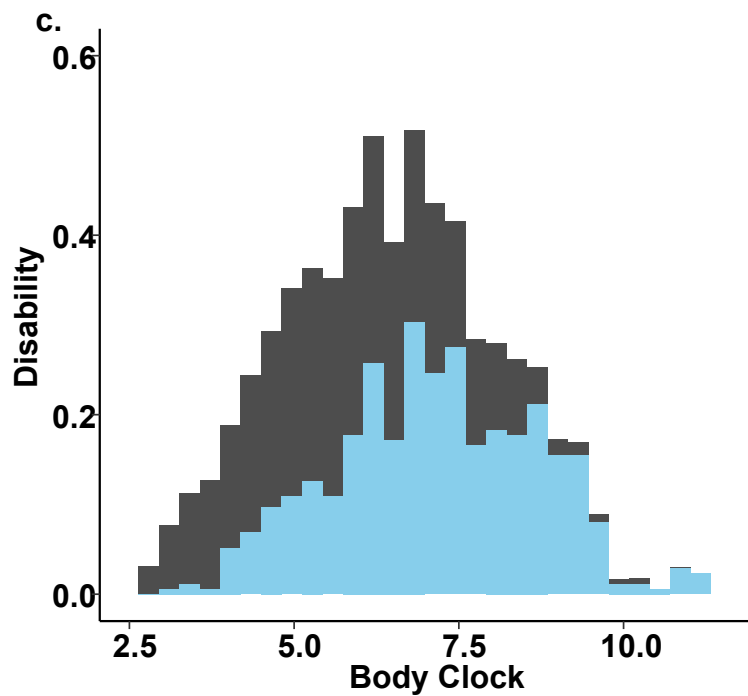
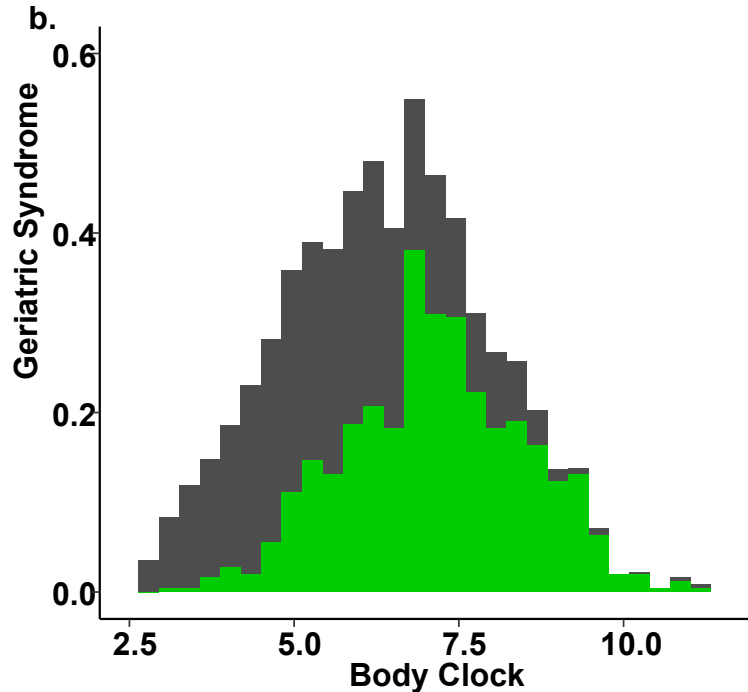
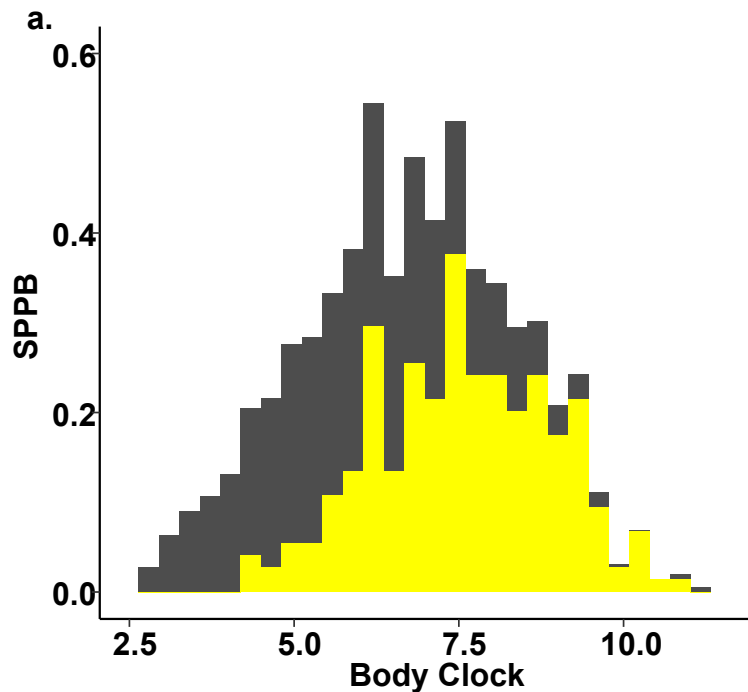


Random Effect of Chronological Age on Body Clock

medRxiv preprint doi: <https://doi.org/10.1101/2021.03.29.21254372>; this version posted April 4, 2021. The copyright holder for this preprint (which was not certified by peer review) is the author/funder, who has granted medRxiv a license to display the preprint in perpetuity. This article is a US Government work. It is not subject to copyright under 17 USC 105 and is also made available for use under a CC0 license.



Body Clock Distribution by Late-life Age-Related Outcomes



Supplemental Materials

Results

Table S1 depicts the descriptive baseline characteristics of Baltimore Longitudinal Study of Aging by baseline age groups.

Table S1. Baseline Characteristics of Baltimore Longitudinal Study of Aging

	20-44 (n=68)	45-55 (n=137)	56-64 (n=230)	65-74 (n=278)	75-85 (n=143)	>85 (n=51)
Follow-up (years)	5.8±4.1	5.4±3.7	4.1±2.7	3.5±2.2	5.0±0.37	5.2±0.7
Mean ± SD (range)	(1-15)	(1-15)	(1-14)	(1-14)	(1-9)	(1-11)
Sex						
Female %	51.5	39.4	38.7	56.8	62.2	51.0
CVD						
<i>HTN</i>	19.1	27.0	44.8	54.3	59.5	62.7
<i>IHD</i>	0	2.9	10.4	14.4	28.7	25.5
<i>CHF</i>	36.8	40.2	50.4	51.8	60.2	80.4
<i>Arrhythmia</i>	27.9	24.8	33.0	42.8	74.5	49.0
<i>PAD</i>	2.9	1.46	0.87	2.9	9.1	13.7
CVA	4.4	4.4	4.3	9.4	17.5	17.6
CKD	32.4	66.4	73.1	92.8	100	96.1
Metabolic						
<i>DM</i>	17.6	26.3	39.1	43.2	48.3	53.1
<i>Hyperlipidemia</i>	35.3	28.5	33.5	28.0	21.85	29.4

GL						
<i>Liver</i>	2.9	11.7	13.9	16.6	32.9	15.7
<i>GID</i>	4.4	16.8	20.0	21.6	25.2	15.7
Respiratory						
<i>COPD</i>	0	2.2	1.6	4.7	9.1	11.8
<i>Adult Asthma</i>	8.8	11.0	6.5	4.7	7.0	3.9
Dysthyroidism						
<i>Hypothyroidism</i>	5.8	12.4	14.8	15.5	24.5	25.5
<i>Hyperthyroidism</i>	0	2.9	0	0.7	2.1	3.9
Hematopoietic Diseases						
<i>Anemia</i>	10.3	8.0	6.0	8.6	15.4	23.0
<i>Thrombocytopenia</i>	5.6	2.9	3.5	5.0	6.3	3.9
Oral Health	20.6	22.6	34.8	35.3	34.3	23.5
MS						
<i>Osteoarthritis</i>	23.5	40.1	50.0	45.3	44.0	37.3
<i>Osteoporosis</i>	23.5	31.4	41.3	54.0	66.4	90.0
Sensory						
<i>Hearing</i>	7.4	9.5	13.5	27.0	53.9	54.9
<i>Eye</i>	4.4	9.5	25.3	61.5	82.5	94.1
CNS						
<i>Depression</i>	25.0	16.1	8.3	9.4	14.7	13.7
<i>Parkinson's</i>	0	0	0.87	0.4	2.1	0
<i>Cognitive Impairment</i>	0	0	0	0.4	0.7	17.7

Cancer	5.9	5.1	7.8	17.6	18.2	16.7
Events Over the Course of Study						
SBPP < 9.0	0	1.2	1.9	5.6	20.2	66.7
Disability	0	1.5	1.3	4.7	18.3	66.7
Geriatric syndrome	0	0	1.1	34.58	61.02	86.32
Mortality	0	0.49	0.43	1.4	3.3	5.9

SD: standard deviation, CVS: cardiovascular system, HTN: hypertension, IHD: ischemic heart disease, CHF: congestive heart failure, PAD: peripheral artery disease, CVA: cerebrovascular accidents, CKD: chronic kidney disease, DM: diabetes mellitus, GID: gastrointestinal disease, COPD: chronic obstructive pulmonary disease, MS: musculoskeletal diseases, CNS: central nervous system, SBPP: a short battery of physical performance.

The prevalence of each organ system morbidity over the 13 years in men and women is depicted in Figure S1.

Figure S1. Prevalence of each organ system morbidity by age groups from left to the right: <45, 45–54, 55–64, 65–74, 75–84, >84 years in **a.** men and **b.** women. Renal and cardiovascular systems have the highest prevalence followed by sensory and gastrointestinal, and liver systems. The organ-systems morbidities increased with age. Ca: Cancer, CNS: central nervous system, CVA: cerebrovascular accident, CVS: cardiovascular system, GL: gastrointestinal-liver system, He: hematopoietic system, Met: metabolic system, MK: musculoskeletal system, Pe: periodontitis, Re: renal system, Res: respiratory system, Se: sensory system, Th: dysthyroidism

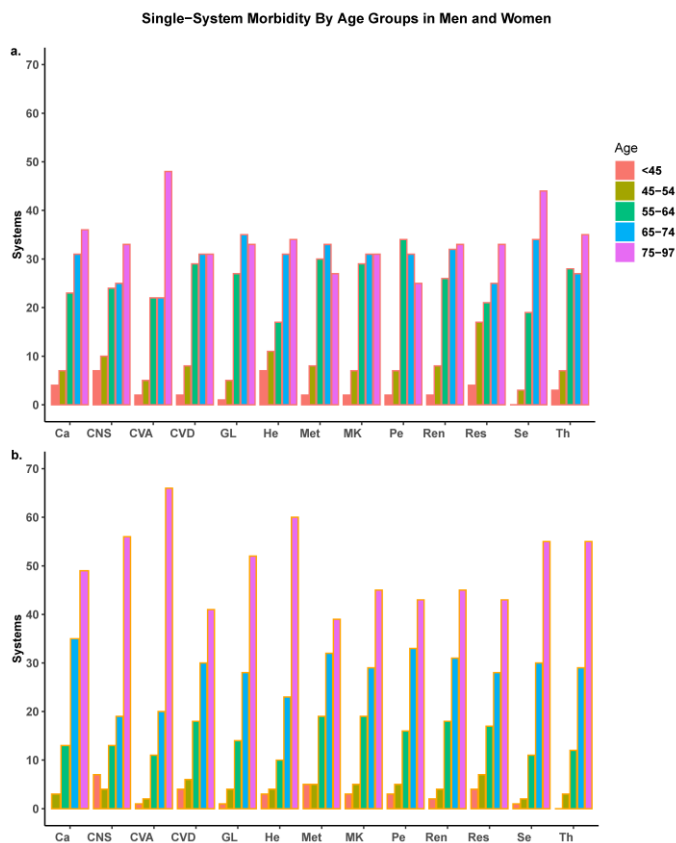


Figure S2. Frequency and Combination Patterns for Body Organ Disease Number. The interactive graphs illustrate any existing combined multisystem morbidities in the youngest group (≤ 44 years), $>50\%$ of individuals had no morbidity or only one system morbidity. **The dynamic graphs are illustrated in the link below.**

<https://bodiagesystem.shinyapps.io/BODN/>

In the youngest age group (≤ 44 years), $>50\%$ of individuals had no morbidity or morbidity in one organ system only. In this age group, participants with cancer frequently have other system morbidities, including CVS, central nervous system (CNS), and renal system (Ren) (Fig. S2a). With increasing age, BODN increases in heterogeneous combinations so that both the number of people with multiple organ-system morbidities and the number of systems with morbidity increase. Particularly, periodontitis, metabolic, kidney, respiratory, and endocrine systems become more frequent after age 55; CVS maintained its increased frequency (Fig. S2c). Renal, sensory (Se), and musculoskeletal (MS) systems appeared more frequently after age 65 (Fig. S2d), while other morbidities such as CVA, cancer, gastrointestinal and liver (GL), and respiratory systems (Res) also further increased. After age 75, most persons showed multiple organ system morbidities, with sensory, CNS, and MS appearing more frequently. CVS, however, was still the most frequent system morbidity in all age groups.

Model Assessments. Using posterior predictive checks and LOO-CV model assessment showed high accuracy for both time-1 and time-2 full models, with diagnostics indicating reliable computation ($k < 0.5$; Table S3, Figs. S3a and S3b; and model convergence $R_{hat} = 1$ for all models). Good effective-sample size from chains using MCMC should be $>1,000$. All models had at least an effective sample size of 2,500. The model assessment showed full models performed better in predicting BODN than their corresponding age-only models (with larger ELPD with diagnostic $k < 0.5$; Table S3).

Table S3: Model Assessments, Model Comparisons, and Model Weights to Predict BODN

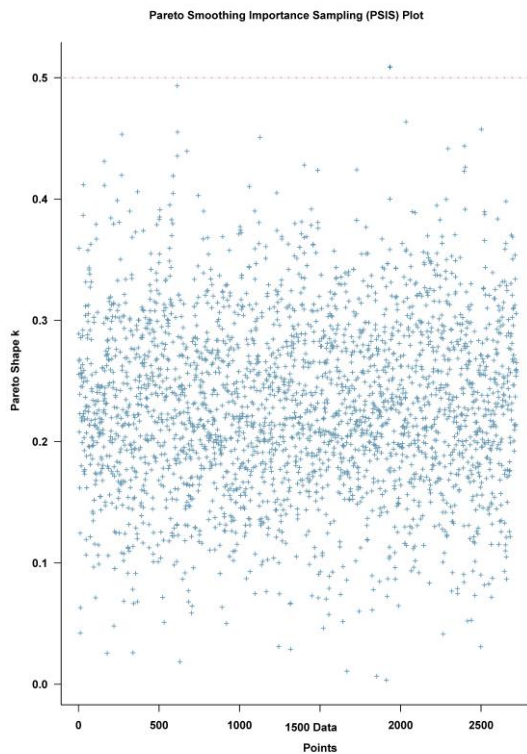
Model Fits	ELPD	SE	PSIS κ <0.7	ELPD_DIFF	DIFF_SE	Weights %
Time*	-3877.1	40.9	100 %	-39.9	9.6	7.0 %
Time-1 age-only	-3837.2	40.6	100 %	Ref	Ref	93.0 %
Time**	-2825.0	33.4	100 %	-111.1	14.5	2.0 %
Time-2 age-only	-2714.0	33.6	100 %	Ref	Ref	98.0 %
Time-1 age-only	-3992.0	41.5	100 %	-302.6	29.8	8.0 %
Time-1 full	-3690.0	42.8	100 %	Ref	Ref	92.0 %
Time-2 age-only	-2714.0	33.4	100 %	-316.4	29.3	2.0 %
Time-2 full	-2398.0	38.3	100 %	Ref	Ref	98.0 %

ELPD: expected log posterior predictive density (higher value is better); ELPD-DIFF: difference in ELPD values compared with the age-only model; SE-DIFF: standard error of the ELPD_DIFF. * Time from baseline to the end of study. ** Time from the second visit to the end of study.

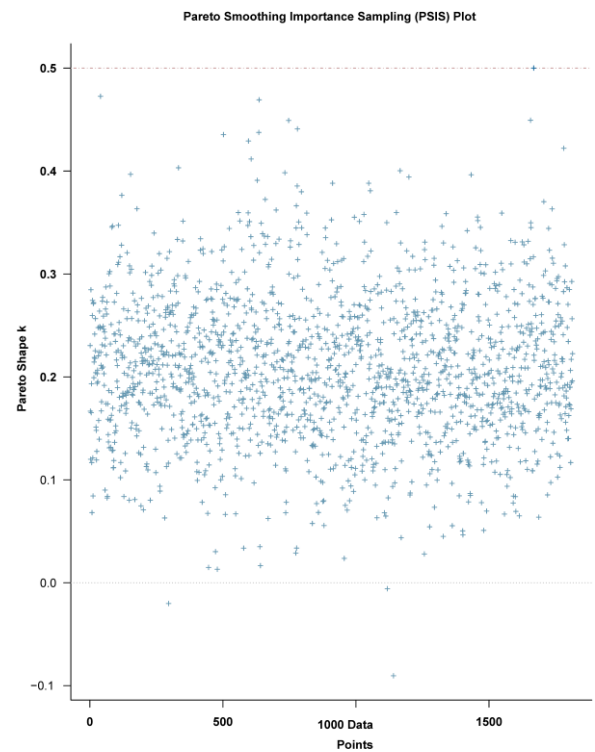
Figure S3. Leave-one-out cross-validation (LOO-CV) for model assessment (with diagnostic $k < 0.5$). Full models leave-one-out cross-validation in the BLSA at **a.** time-1 and **b.** time-2. Each +

represents an individual at each time-point ($907 \times 3 = 2701$ observations at time-1, and $907 \times 2 = 1904$ at time- 2). Pareto-smoothed importance sampling diagnostic $k < 0.5$ indicates that the LOO-CV computation is reliable and there are no outlier observations.

a.



b.



In-sample and Out-of-Sample Validation of Body Clock. To validate the BLSA data results, we used the parameters obtained from time-1 BLSA to predict BODN in the InCHIANTI participants as an out-of-sample validation. The external estimates optimally predicted BODN values for InCHIANTI data as illustrated (Fig. S4a). Stacking showed that the full models using InCHIANTI outperformed the age-only models predicting BODN (time-1: 72% versus 28%,

time 2: 84% versus 16%). We also used time-1 BLSA parameters (estimates) to create a simulated dataset to compare with the observed data (in-sample validation), showing that the parameters obtained from the model can optimally reproduce the observed BODN (Fig. S4b).

Figure S4. Posterior predictive check (coefficient estimates distribution) of Body Organ Disease Number (BODN). **a.** InCHIANTI using BLSA time-1 lagged parameters (out-of-sample-validation). **b.** Simulated data using BLSA time-1 parameters (In-sample-validation). The predictive check applying distribution of coefficient estimates obtained from BLSA (full model time-1 diseases predicting BODN can be employed to predict BODN in the InCHIANTI dataset (out-of-sample validation). S4b shows that applying the BLSA parameters from the time-1 full model to create a simulated BODN matched the observed BODN in the BLSA dataset (in-sample validation).

Using BLSA parameters to predict InCHIANTI BODN (external validation)
and Predicted Simulated BODN (internal validation)

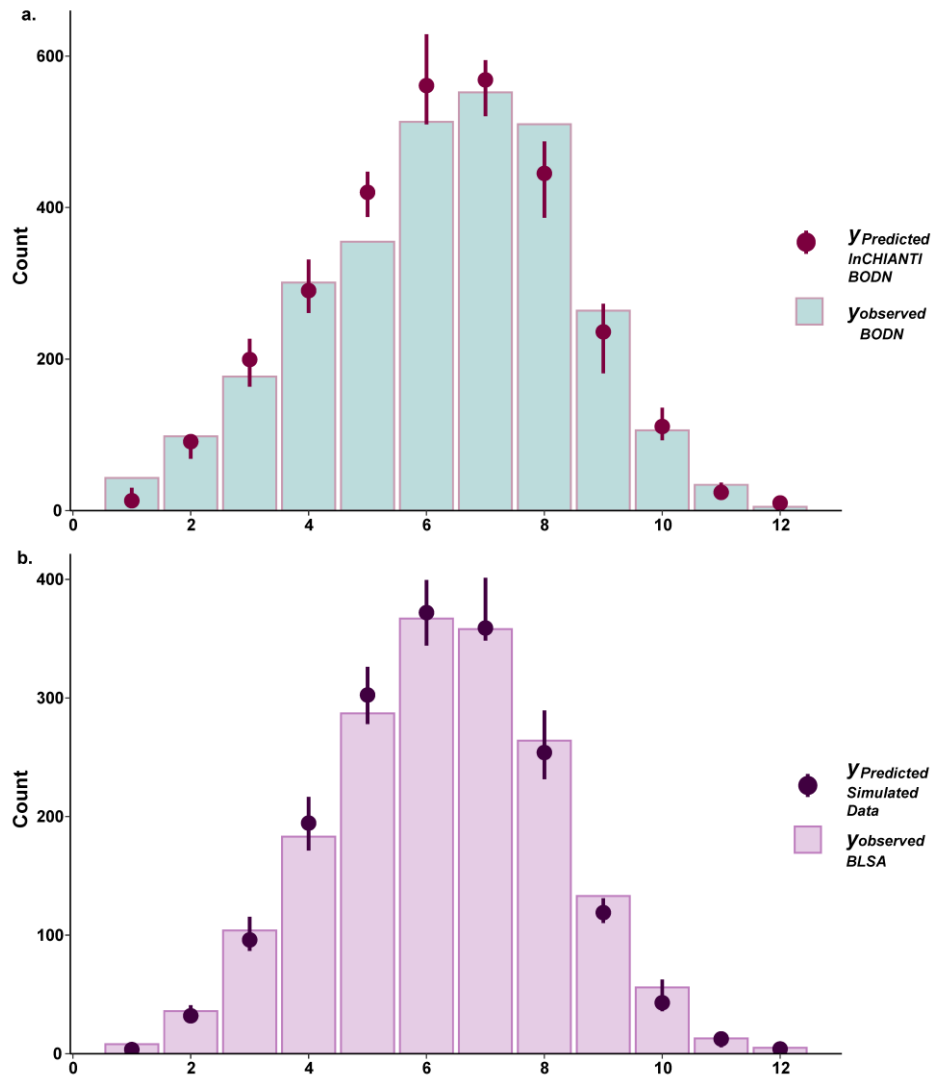


Table S2a. Time-1 Single Disease Models Predicting Longitudinal BOPD Disease

Disease	Estimate	Estmate.Error	2.5 % QI	97.5 % QI
HTN	1.48748513	0.14244193	1.265261	1.727344
HTN[L2]	0.608147942	0.02302767	0.199595	1.180122
HTN[L3]	0.879337188	0.02302767	0.400834	1.454855
IHD	1.590701418	0.2130871	1.236201	1.93902
IHD[L2]	1.405548061	0.0164556	0.885476	1.886387
IHD[L3]	0.185153357	0.0164556	0.033556	0.550124
CHF	1.817841746	0.19135231	1.505468	2.132722
CHF[L2]	0.623780921	0.01429419	0.335977	1.01448
CHF[L3]	1.194060825	0.01429419	0.789357	1.65676
Arr	0.745955299	0.14010083	0.548137	1.004203
Arr[L2]	0.134633477	0.01096928	0.038362	0.329043
Arr[L3]	0.142959825	0.01435785	0.030942	0.384028
Arr[L4]	0.160614601	0.01634462	0.033734	0.420957
Arr[L5]	0.095755181	0.01156393	0.016202	0.303803
Arr[L6]	0.175775971	0.01722097	0.036285	0.447191
PAD	3.681348581	0.69690847	2.527541	4.812853
Stroke	1.658084319	0.24100643	1.271465	2.058649
Stroke[L2]	0.718711659	0.03128027	0.294805	1.354062
Stroke[L3]	0.160869135	0.01655708	0.026049	0.537075
Stroke[L4]	0.753050646	0.03122227	0.285943	1.348193
CKD	2.543278968	0.38526266	1.982762	3.255165
CKD[L2]	0.981979037	0.02375893	0.591656	1.616537
CKD[L3]	0.439258811	0.01611823	0.216993	0.808529
CKD[L4]	0.386338901	0.02596589	0.107669	0.875411
CKD[L5]	0.718089258	0.04482019	0.194285	1.476121
DM	1.100313801	0.19663324	0.813673	1.443534
DM[L2]	0.198607407	0.01352298	0.066055	0.455984
DM[L3]	0.062931814	0.00808473	0.010279	0.227045
DM[L4]	0.295125897	0.01868092	0.103901	0.648871
DM[L5]	0.117869808	0.01239906	0.022203	0.332538
DM[L6]	0.400923358	0.02374551	0.12154	0.762908
Lipid	0.428824981	0.21146636	0.087281	0.786089
Lipid[L2]	0.195343596	0.0478554	0.012359	0.642082
Lipid[L3]	0.233481385	0.0478554	0.015989	0.674777
Liver	1.318365534	0.23246367	0.986947	1.77978
Liver[L2]	0.542588758	0.03254616	0.197003	1.161116
Liver[L3]	0.476694279	0.03321418	0.141961	1.07997
Liver[L4]	0.27348675	0.02790752	0.05192	0.748293
GID	1.624688808	0.18822779	1.308383	1.939053
GID[L2]	1.30231338	0.02097809	0.773181	1.836277
GID[L3]	0.322375427	0.02097809	0.069348	0.793182
COPD	2.821346678	0.45855995	2.111571	3.614884
COPD[L2]	1.974075995	0.06542288	0.989305	3.2832
COPD[L3]	0.847270683	0.06542288	0.193747	1.921252
Asthma	2.679086915	0.5416834	1.794785	3.587009

Hypoth	1.150961988	0.1483237	0.908648	1.402722
Hypoth[L2]	0.708281824	0.01762675	0.381034	1.122354
Hypoth[L3]	0.207032219	0.01618875	0.041684	0.551865
Hypoth[L4]	0.206456346	0.01601004	0.041332	0.542585
Hyperth	2.629559971	1.24912886	0.601021	4.750696
Anemia	1.499373068	0.31865919	1.012262	2.137788
Anemia[L2]	1.166531876	0.04124908	0.551422	2.02005
Anemia[L3]	0.332841192	0.04124908	0.05575	0.973244
Thrombocytopenia	2.068472599	0.65843308	0.744881	3.324791
OA	1.369356305	0.24714511	0.998293	1.796632
OA[L2]	0.91317123	0.03097241	0.47735	1.58459
OA[L3]	0.456185075	0.03097241	0.11782	0.937543
Osteop	1.3915404	0.18631465	1.094002	1.7
Osteop[L2]	0.862914982	0.01980504	0.498618	1.37375
Osteop[L3]	0.528625419	0.01980504	0.209952	0.925184
Periodontitis	2.027162054	0.30434752	1.558269	2.530962
Periodontitis[L2]	1.218530109	0.03095982	0.702117	2.003396
Periodontitis[L3]	0.808631945	0.03095982	0.324813	1.390574
Hearing	1.523168862	0.18266472	1.25482	1.849644
Hearing[L2]	1.016883232	0.01693737	0.656657	1.510456
Hearing[L3]	0.225454716	0.01440523	0.05265	0.54385
Hearing[L4]	0.255980065	0.01695774	0.056576	0.624517
Eye	1.652546546	0.20648247	1.352296	2.044069
Eye[L2]	0.983275203	0.01589571	0.647984	1.486025
Eye[L3]	0.084973886	0.00696323	0.016475	0.25369
Eye[L4]	0.236649432	0.01383546	0.064188	0.521441
Eye[L5]	0.320243499	0.02024355	0.074992	0.726519
Depression	1.074648122	0.24174024	0.6803	1.475524
Depression[L2]	0.6515118	0.0480564	0.182853	1.297759
Depression[L3]	0.423136322	0.0480564	0.08196	1.078929
Parkinson's	3.17286003	1.36860008	1.004209	5.669947
Park[L2]	1.785098423	0.28943681	0.236803	4.948727
Park[L3]	1.387761607	0.28943681	0.127736	4.332916
CI	3.281019941	0.89599083	1.896976	4.898348
CI[L2]	2.311773652	0.14338112	0.799231	4.509921
CI[L3]	0.969246289	0.14338112	0.150426	2.834585
Cancer	2.764381135	0.41449836	2.089097	3.439591

HTN: Hypertension, IHS: Ischemic heart disease, CHF: Congestive heart failure, Arr: Arrhythmia, PAD: peripheral artery disease, CKD: chronic kidney disease, DM; diabetes mellitus, Lipid; hyperlipidemia, GID: gastrointestinal disease, COPD: Chronic obstructive pulmonary disease, Hypoth: Hypothyroidism, OA: osteoarthritis, osteop: osteoporosis, Park: Parkinson's, CI: cognitive impairment

Table S2b. Time-1 Single-System Models Predicting Longitudinal BODN

System	Disease	Estimate	Estimate.Error	2.5QI	97.5QI
CVD	Hypertension (HTN)	1.124871	0.131508	0.911012	1.349484
	HTN[L2]	0.516662	0.024162	0.16062	1.035927
	HTN[L3]	0.608209	0.024162	0.211677	1.111557
	Ischemic Heart Disease (IHD)	0.915819	0.209326	0.571136	1.254201
	IHD[L2]	0.721609	0.028235	0.286257	1.188038
	IHD[L3]	0.19421	0.028235	0.030129	0.625586
	Congestive Heart Failure (CHF)	1.268613	0.181241	0.975808	1.565369
	CHF[L2]	0.412375	0.017686	0.167571	0.775772
	CHF[L3]	0.856238	0.017686	0.492213	1.296555
	Arrhythmia (Arr)	0.436442	0.093867	0.288669	0.599071
	Arr[L2]	0.078718	0.008845	0.015312	0.218847
	Arr[L3]	0.10548	0.011948	0.02019	0.283023
	Arr[L4]	0.086246	0.011292	0.013514	0.256734
	Arr[L5]	0.068738	0.00965	0.010744	0.219818
	Arr[L6]	0.067916	0.009233	0.010824	0.2124
Pripheral Artery Disease	1.36731	0.662953	0.276587	2.435516	
CVA	Stroke	1.658084	0.241006	1.271465	2.058649
	Stroke[L2]	0.718712	0.03128	0.294805	1.354062
	Stroke[L3]	0.160869	0.016557	0.026049	0.537075
	Stroke[L4]	0.753051	0.031222	0.285943	1.348193
Renal	Chronik Kidney Disease (CKD)	2.543279	0.385263	1.982762	3.255165
	CKD[L2]	0.981979	0.023759	0.591656	1.616537
	CKD[L3]	0.439259	0.016118	0.216993	0.808529
	CKD[L4]	0.386339	0.025966	0.107669	0.875411
	CKD[L5]	0.718089	0.04482	0.194285	1.476121
Metabolic	Diabetes Mellitus (DM)	1.101389	0.198533	0.809445	1.444972
	DM[L2]	0.192811	0.013445	0.06163	0.438466
	DM[L3]	0.063025	0.008057	0.010321	0.226901
	DM[L4]	0.296613	0.018001	0.107253	0.640297
	DM[L5]	0.121125	0.012964	0.024071	0.344114
	DM[L6]	0.403003	0.024542	0.119298	0.770622
	Lipid	0.230079	0.199008	-0.088	0.558714
Lipid[L2]	0.105417	0.048264	-0.01104	0.464697	
Lipid[L3]	0.124662	0.048264	-0.01481	0.488608	
GILIV	Liver	1.319161	0.230119	0.99516	1.761209
	Liver[L2]	0.458375	0.030105	0.155004	1.030652
	Liver[L3]	0.561652	0.033289	0.202313	1.171493
	Liver[L4]	0.270554	0.027127	0.051625	0.724991
	Gastrointestinal disease (GID)	1.609891	0.178336	1.320603	1.912127

	GID[L2]	1.294788	0.020005	0.785528	1.813776
	GID[L3]	0.315104	0.020005	0.067926	0.774745
Respiratory	Chronic Obstructive Pulmonary Disease (2.407244	0.427321	1.756588	3.161102
	COPD[L2]	1.823845	0.056413	0.920263	2.955031
	COPD[L3]	0.583399	0.056413	0.114511	1.505026
	Asthma	1.966591	0.558395	1.052898	2.887338
Dysthyroidism	Hypothyroidism (Hypoth)	1.130064	0.148923	0.890788	1.376182
	Hypoth[L2]	0.708059	0.017667	0.375589	1.116119
	Hypoth[L3]	0.201862	0.016071	0.039943	0.534519
	Hypoth[L4]	0.194634	0.015693	0.036885	0.523929
	Hyperth	1.30653	1.220865	-0.68112	3.281895
Hematologic	Anemia	1.544343	0.329312	1.055362	2.156649
	Anemia[L2]	1.204675	0.043028	0.580662	2.039886
	Anemia[L3]	0.339667	0.043028	0.057138	0.970056
	Thrombocytopenia	2.235982	0.654625	1.156019	3.322787
MSK	Osteoarthritis (OA)	1.488638	0.247557	1.106206	1.913239
	OA[L2]	0.944788	0.02838	0.51686	1.604315
	OA[L3]	0.543851	0.02838	0.178615	1.019303
	Osteop	1.448479	0.177452	1.159768	1.744862
	Osteop[L2]	0.947034	0.017462	0.578679	1.438021
	Osteop[L3]	0.501444	0.017462	0.20395	0.874243
Oral Health	Periodontitis	2.027162	0.304348	1.558269	2.530962
	Periodontitis[L2]	1.21853	0.03096	0.702117	2.003396
	Periodontitis[L3]	0.808632	0.03096	0.324813	1.390574
Sensory	Hearing	1.029489	0.159273	0.794711	1.318599
	Hearing[L2]	0.683202	0.016603	0.395062	1.098742
	Hearing[L3]	0.134098	0.012827	0.024995	0.37325
	Hearing[L4]	0.194003	0.016816	0.037838	0.489177
	Eye	1.392945	0.180934	1.141757	1.732366
	Eye[L2]	0.878411	0.014839	0.577192	1.329798
	Eye[L3]	0.073999	0.006344	0.014944	0.221153

	Eye[L4]	0.166353	0.011557	0.03864	0.409862
	Eye[L5]	0.24551	0.017393	0.054983	0.594865
CNS	Depression	1.025566	0.243399	0.629312	1.420564
	Depression[L2]	0.589299	0.051223	0.146429	1.246848
	Depression[L3]	0.436267	0.051223	0.076956	1.090026
	Parkinson's (Park)	3.162885	1.355242	1.113903	5.630722
	Park[L2]	1.763537	0.287345	0.26076	4.895371
	Park[L3]	1.399348	0.287345	0.145471	4.312595
	Cognitive Impairment (CI)	3.074245	0.838734	1.741828	4.567159
	CI[L2]	2.236709	0.130251	0.772743	4.239599
	CI[L3]	0.837536	0.130251	0.124925	2.540988
Cancer	Cancer	2.764381	0.414498	2.089097	3.439591

Table S2c. Time-1 Disease Levels of All Organ Systems Predicting Longitudinal BODN

System	Disease	Estimate	Estimate.Error	2.5QI	97.5QI
CVD	Hypertension (HTN)	0.4901	0.063542	0.387963	0.5967
	HTN[L2]	0.3299	0.042782	0.261211	0.401752
	HTN[L3]	0.1601	0.02076	0.126752	0.194948
	Ischemic Heart Disease (IHD)	0.2304	0.107847	0.053816	0.408531
	IHD[L2]	0.1081	0.050608	0.025254	0.191707
	IHD[L3]	0.1223	0.057239	0.028563	0.216825
	Congestive Heart Failure (CHF)	0.3216	0.074757	0.201216	0.449982
	CHF[L2]	0.2341	0.054418	0.146471	0.327556
	CHF[L3]	0.0875	0.020339	0.054744	0.122426
	Arrhythmia (Arr)	0.1664	0.039274	0.102884	0.235059
	Arr[L2]	0.0697	0.016448	0.043087	0.098441
	Arr[L3]	0.027	0.006376	0.016701	0.038158
	Arr[L4]	0.0201	0.004739	0.012413	0.028361
	Arr[L5]	0.0189	0.004461	0.011686	0.026699
Arr[L6]	0.0206	0.004861	0.012734	0.029094	
Peripheral Artery Disease	-0.0406	0.315954	-0.5617	0.478966	
CVA	Stroke	0.6723	0.098464	0.512061	0.838745
	Stroke[L2]	0.3464	0.050729	0.263817	0.432127
	Stroke[L3]	0.0935	0.013697	0.071233	0.116678
	Stroke[L4]	0.217	0.031779	0.165268	0.270705
Renal	Chronic Kidney Disease (CKD)	0.9306	0.147978	0.726341	1.222689
	CKD[L2]	0.5406	0.085965	0.421951	0.710294
	CKD[L3]	0.0708	0.011254	0.055237	0.092984
	CKD[L4]	0.0976	0.015517	0.076166	0.128215
	CKD[L5]	0.2046	0.032536	0.1597	0.268831
Metabolic	Diabetes Mellitus (DM)	0.4106	0.049724	0.337443	0.505957
	DM[L2]	0.1762	0.021342	0.144831	0.217158
	DM[L3]	0.059	0.007145	0.048489	0.072703
	DM[L4]	0.0586	0.0071	0.048183	0.072246
	DM[L5]	0.0481	0.005824	0.039522	0.059259
	DM[L6]	0.0528	0.006397	0.043411	0.06509
	Lipid	0.4458	0.083246	0.314462	0.58849
	Lipid[L2]	0.3219	0.060111	0.22707	0.424943
Lipid[L3]	0.1239	0.023135	0.087392	0.163547	
GILIV	Liver	0.7769	0.133789	0.591171	1.031132
	Liver[L2]	0.4361	0.075101	0.331848	0.578816
	Liver[L3]	0.128	0.022035	0.097366	0.169829
	Liver[L4]	0.1999	0.034431	0.15214	0.265366
	Gastrointestinal disease (GI)	0.9063	0.082108	0.773708	1.047646

GID	GID[L2]	0.7413	0.067157	0.632825	0.856882
	GID[L3]	0.165	0.014951	0.140883	0.190764
Respiratory	Chronic Obstructive Pulm	0.6973	0.175453	0.414325	0.989226
	COPD[L2]	0.5629	0.141638	0.334472	0.798574
	COPD[L3]	0.1344	0.033815	0.079852	0.190653
	Asthma	1.6447	0.247988	1.241771	2.057476
Dysthyroidism	Hypothyroidism (Hypoth)	0.7089	0.066144	0.604167	0.820915
	Hypoth[L2]	0.5181	0.048342	0.441563	0.599976
	Hypoth[L3]	0.0896	0.008359	0.076352	0.103744
	Hypoth[L4]	0.0884	0.008245	0.075308	0.102325
	Hyperth	-0.0282	0.531731	-0.90793	0.838024
Hematologic	Anemia	0.9656	0.18783	0.699185	1.326615
	Anemia[L2]	0.6969	0.135558	0.504605	0.957423
	Anemia[L3]	0.2687	0.052272	0.194581	0.369192
	Thrombocytopenia	2.1069	0.293686	1.626414	2.604094
MSK	Osteoarthritis (OA)	0.9236	0.114284	0.748405	1.117593
	OA[L2]	0.6574	0.081345	0.5327	0.79548
	OA[L3]	0.2662	0.032939	0.215705	0.322113
	Osteop	0.5872	0.070873	0.474086	0.707026
	Osteop[L2]	0.4998	0.060321	0.403501	0.60176
	Osteop[L3]	0.0874	0.010552	0.070585	0.105267
Oral Health	Periodontitis	1.3705	0.11046	1.205917	1.570483
	Periodontitis[L2]	1.1645	0.093851	1.024595	1.334344
	Periodontitis[L3]	0.2061	0.016609	0.181322	0.236139
Sensory	Hearing	0.47	0.07944	0.348463	0.608929
	Hearing[L2]	0.2875	0.048601	0.213188	0.37254
	Hearing[L3]	0.0939	0.015869	0.069609	0.12164
	Hearing[L4]	0.078	0.013187	0.057844	0.101081
	Eye	0.6709	0.096069	0.539163	0.854469
	Eye[L2]	0.4295	0.061503	0.345174	0.547033
	Eye[L3]	0.05	0.007157	0.040165	0.063654

	Eye[L4]	0.0386	0.00553	0.031036	0.049186
	Eye[L5]	0.1399	0.020034	0.112436	0.178189
CNS	Depression	0.7574	0.104652	0.587376	0.929958
	Depression[L2]	0.4662	0.064419	0.36156	0.572437
	Depression[L3]	0.2912	0.040233	0.225816	0.357521
	Parkinson (Park)	0.5288	0.56304	-0.48385	1.507164
	Park[L2]	0.2617	0.278659	-0.23947	0.745924
	Park[L3]	0.2671	0.284381	-0.24438	0.76124
	Cognitive Impairment (CI)	1.3213	0.353249	0.755685	1.95154
	CI[L2]	1.0165	0.271779	0.5814	1.501454
	CI[L3]	0.3047	0.08147	0.174284	0.450086
Cancer	Cancer	2.3113	0.183372	2.014284	2.61664

Table S2d. Time-2 Single Disease Models Predicting Longitudinal BODN

Disease	Estimate	Estimate. Error	2.5QI	97.5 QI
HTN	1.365808	0.145896	1.084617	1.654983
HTN[L2]	0.457781	0.023344	0.073561	1.118686
HTN[L3]	0.908027	0.023344	0.35147	1.542738
IHD	1.622505	0.222358	1.192195	2.065991
IHD[L2]	1.405864	0.017816	0.808273	2.02548
IHD[L3]	0.216641	0.017816	0.023377	0.66531
CHF	1.769312	0.180345	1.418302	2.119335
CHF[L2]	0.478147	0.015519	0.153727	0.937947
CHF[L3]	1.291165	0.015519	0.790608	1.889624
Arr	0.743946	0.136673	0.506709	1.043734
Arr[L2]	0.139165	0.010789	0.025686	0.375279
Arr[L3]	0.152824	0.014173	0.020366	0.45125
Arr[L4]	0.172207	0.015866	0.021512	0.509586
Arr[L5]	0.118181	0.012682	0.011569	0.390252
Arr[L6]	0.161569	0.015239	0.01854	0.471411
PAD	2.978019	0.689274	1.619879	4.338565
Stroke	1.668384	0.229083	1.234162	2.119765
Stroke[L2]	0.73642	0.028718	0.250695	1.482205
Stroke[L3]	0.167642	0.015495	0.015594	0.567612
Stroke[L4]	0.764322	0.029001	0.243015	1.461221
CKD	2.442091	0.310664	1.904067	3.104174
CKD[L2]	1.036799	0.01708	0.612134	1.664554
CKD[L3]	0.428573	0.013215	0.188043	0.822401
CKD[L4]	0.464603	0.018483	0.145306	0.955831
CKD[L5]	0.512116	0.028469	0.08769	1.218533
DM	0.951331	0.12853	0.717657	1.21484
DM[L2]	0.234595	0.010546	0.070654	0.508477
DM[L3]	0.066894	0.006142	0.006137	0.22857
DM[L4]	0.286248	0.012644	0.085145	0.609971
DM[L5]	0.148542	0.00974	0.02146	0.391146
DM[L6]	0.215052	0.012681	0.037313	0.514318
Lipid	0.558611	0.189719	0.195398	0.942886
Lipid[L2]	0.304678	0.037964	0.029306	0.851936
Lipid[L3]	0.253933	0.037964	0.018848	0.801471
Liver	1.444632	0.180459	1.134956	1.845936
Liver[L2]	0.621207	0.023077	0.213619	1.269331
Liver[L3]	0.622685	0.023548	0.210204	1.275429
Liver[L4]	0.200739	0.014479	0.022901	0.595614
GID	1.815753	0.185757	1.455839	2.185794
GID[L2]	1.433338	0.019864	0.807431	2.104678
GID[L3]	0.382415	0.019864	0.054027	0.973519
COPD	2.732677	0.460804	1.880481	3.688122
COPD[L2]	2.000727	0.057043	0.884057	3.48998
COPD[L3]	0.73195	0.057043	0.101028	1.954252
Asthma	2.469325	0.561051	1.364427	3.581968

Hypoth	1.235864	0.149337	0.9413	1.530367
Hypoth[L2]	0.603571	0.018269	0.234759	1.117869
Hypoth[L3]	0.317071	0.019663	0.042818	0.821795
Hypoth[L4]	0.315221	0.019071	0.043257	0.806556
Hyperth	2.122435	1.482759	-0.77767	5.092417
Anemia	1.591337	0.322833	1.017547	2.288061
Anemia[L2]	1.185091	0.040385	0.489339	2.181544
Anemia[L3]	0.406246	0.040385	0.04737	1.187731
Thrombocytopenia	2.890611	0.634849	1.659163	4.127576
OA	1.165759	0.182332	0.81344	1.534836
OA[L2]	0.82754	0.020706	0.393912	1.416313
OA[L3]	0.338219	0.020706	0.062815	0.791585
Osteop	1.165759	0.182332	0.81344	1.534836
Osteop[L2]	0.82754	0.020706	0.393912	1.416313
Osteop[L3]	0.338219	0.020706	0.062815	0.791585
Periodontitis	1.871257	0.26831	1.368994	2.407186
Periodontitis[L2]	1.270717	0.028206	0.667175	2.151126
Periodontitis[L3]	0.60054	0.028206	0.145624	1.234051
Hearing	1.559496	0.215671	1.17085	2.014039
Hearing[L2]	0.938724	0.020281	0.50103	1.595718
Hearing[L3]	0.286431	0.018466	0.045657	0.732353
Hearing[L4]	0.334341	0.021373	0.047961	0.841117
Eye	1.666392	0.192839	1.328692	2.081217
Eye[L2]	1.035007	0.013648	0.647295	1.591406
Eye[L3]	0.084664	0.006026	0.008998	0.26293
Eye[L4]	0.273197	0.012249	0.060557	0.606492
Eye[L5]	0.273524	0.015775	0.038655	0.704151
Depression	1.481503	0.258922	0.97758	1.977831
Depression[L2]	0.783133	0.047483	0.168334	1.715752
Depression[L3]	0.69837	0.047483	0.129537	1.63726
Parkinson	2.572778	0.771707	1.076916	4.076622
Park[L2]	1.501403	0.157381	0.171917	3.774496
Park[L3]	1.071375	0.157381	0.079812	3.425835
CI	3.001057	0.633862	1.869988	4.33048
CI[L2]	2.11621	0.08822	0.7863	4.081947
CI[L3]	0.884847	0.08822	0.107322	2.509583
Cancer	2.818	0.413636	2.034214	3.641436

HTN: Hypertension, IHS: Ischemic heart disease, CHF: Congestive heart failure, Arr: Arrhythmia, PAD: peripheral artery disease, CKD: chronic kidney disease, DM; diabetes mellitus, Lipid; hyperlipidemia, GID: gastrointestinal disease, COPD: Chronic obstructive pulmonary disease, Hypoth: Hypothyroidism, OA: osteoarthritis, osteop: osteoporosis, Park: Parkinson's, CI: cognitive impairment

Table S2e. Time-2 Single-System Models Predicting Longitudinal BODN

System	Disease	Estimate	Estimate. Error	2.5QI	97.5QI
CVD	Hypertension (HTN)	1.018357	0.143377	0.73696	1.301482
	HTN[L2]	0.418161	0.026729	0.066469	1.035602
	HTN[L3]	0.600197	0.026729	0.150554	1.184096
	Ischemic Heart Disease (IHD)	1.000125	0.216349	0.5789	1.429937
	IHD[L2]	0.729253	0.03174	0.227183	1.362437
	IHD[L3]	0.270872	0.03174	0.027327	0.868773
	Congestive Heart Failure (CHF)	1.315361	0.17528	0.9752	1.662775
	CHF[L2]	0.334378	0.017722	0.07355	0.777206
	CHF[L3]	0.980983	0.017722	0.519377	1.537368
	Arrhythmia (Arr)	0.467016	0.103864	0.271467	0.683637
	Arr[L2]	0.088638	0.009675	0.010178	0.269983
	Arr[L3]	0.108507	0.012374	0.011571	0.3402
	Arr[L4]	0.101532	0.012474	0.009	0.334287
	Arr[L5]	0.090284	0.011443	0.008163	0.305801
Arr[L6]	0.078056	0.009979	0.006722	0.263613	
Peripheral Artery Disease	1.10438	0.631697	-0.1545	2.346295	
CVA	Stroke	1.668384	0.229083	1.234162	2.119765
	Stroke[L2]	0.73642	0.028718	0.250695	1.482205
	Stroke[L3]	0.167642	0.015495	0.015594	0.567612
	Stroke[L4]	0.764322	0.029001	0.243015	1.461221
Renal	Chronic Kidney Disease (CKD)	2.442091	0.310664	1.904067	3.104174
	CKD[L2]	1.036799	0.01708	0.612134	1.664554
	CKD[L3]	0.428573	0.013215	0.188043	0.822401
	CKD[L4]	0.464603	0.018483	0.145306	0.955831
	CKD[L5]	0.512116	0.028469	0.08769	1.218533
Metabolic	Diabetes Mellitus (DM)	0.941733	0.127327	0.707474	1.207974
	DM[L2]	0.220121	0.010625	0.057444	0.491319
	DM[L3]	0.065162	0.006047	0.005998	0.229004
	DM[L4]	0.280684	0.012822	0.080813	0.611516
	DM[L5]	0.157705	0.010227	0.023789	0.407973
	DM[L6]	0.21806	0.012769	0.035544	0.516079
	Lipid	0.306806	0.183832	-0.05596	0.668182
	Lipid[L2]	0.16523	0.03903	-0.00713	0.60988
Lipid[L3]	0.141576	0.03903	-0.00488	0.583097	
GILIV	Liver	1.38194	0.18042	1.073583	1.783083
	Liver[L2]	0.514618	0.022064	0.159046	1.12239
	Liver[L3]	0.661507	0.023015	0.248112	1.29947
	Liver[L4]	0.205815	0.014926	0.024015	0.595372
	Gastrointestinal disease (GID)	1.689544	0.174246	1.351319	2.031869

	GID[L2]	1.3655	0.017146	0.796917	1.961903
	GID[L3]	0.324044	0.017146	0.046532	0.833609
Respiratory	Chronic Obstructive Pulmonary	2.42372	0.44821	1.591579	3.332334
	COPD[L2]	1.837564	0.055401	0.780943	3.194109
	COPD[L3]	0.586156	0.055401	0.066018	1.697252
	Asthma	1.658557	0.565445	0.553314	2.754458
Dysthyroidism	Hypothyroidism (Hypoth)	1.224121	0.148128	0.93947	1.51975
	Hypoth[L2]	0.601929	0.018744	0.229635	1.11939
	Hypoth[L3]	0.312949	0.019576	0.039265	0.821059
	Hypoth[L4]	0.309242	0.019058	0.04149	0.805626
	Hyperth	1.728464	1.441883	-1.09406	4.554366
Hematologic	Anemia	1.547565	0.321944	0.974908	2.23388
	Anemia[L2]	1.13496	0.041509	0.455607	2.129547
	Anemia[L3]	0.412605	0.041509	0.045533	1.189913
	Thrombocytopenia	2.670039	0.654878	1.412888	3.992609
MSK	Osteoarthritis (OA)	1.345266	0.219338	0.94882	1.802361
	OA[L2]	1.008486	0.023515	0.506721	1.699702
	OA[L3]	0.33678	0.023515	0.054043	0.839804
	Osteop	1.189374	0.176104	0.850037	1.545254
	Osteop[L2]	0.896277	0.01855	0.454305	1.453848
	Osteop[L3]	0.293096	0.01855	0.050282	0.719389
Oral Health	Periodontitis	1.871257	0.26831	1.368994	2.407186
	Periodontitis[L2]	1.270717	0.028206	0.667175	2.151126
	Periodontitis[L3]	0.60054	0.028206	0.145624	1.234051
Sensory	Hearing	1.139536	0.193769	0.789897	1.544018
	Hearing[L2]	0.639806	0.021346	0.282885	1.209254
	Hearing[L3]	0.189005	0.01728	0.021745	0.565522
	Hearing[L4]	0.310724	0.023063	0.044807	0.784402
	Eye	1.469936	0.1774	1.159481	1.856872
	Eye[L2]	0.939982	0.013364	0.576022	1.467763
	Eye[L3]	0.076834	0.005816	0.008069	0.247109

	Eye[L4]	0.20955	0.01113	0.037963	0.504977
	Eye[L5]	0.24357	0.014698	0.033434	0.63251
CNS	Depression	1.348211	0.257022	0.856412	1.861212
	Depression[L2]	0.692507	0.048249	0.132127	1.624393
	Depression[L3]	0.655704	0.048249	0.108969	1.574065
	Parkinson (Park)	2.070603	0.761152	0.556259	3.581636
	Park[L2]	1.185202	0.159305	0.083112	3.306083
	Park[L3]	0.885401	0.159305	0.042796	3.046493
	Cognitive Impairment (CI)	2.616761	0.613695	1.484476	3.909597
	CI[L2]	1.792295	0.089525	0.574103	3.670461
	CI[L3]	0.824466	0.089525	0.0908	2.397608
Cancer	Cancer	2.818	0.413636	2.034214	3.641436

Table S2f. Time-2 Disease Levels of All Organ Systems Predicting Longitudinal BODN

System	Disease	Estimate	Estimate.Error	2.5QI	97.5QI
CVD	Hypertension (HTN)	0.379916	0.059904	0.262583	0.497771
	HTN[L2]	0.232224	0.011382	0.056743	0.462956
	HTN[L3]	0.147692	0.011382	0.018366	0.390204
	Ischemic Heart Disease (IHD)	0.182975	0.099149	-0.01024	0.375307
	IHD[L2]	0.101525	0.021356	-0.00128	0.346461
	IHD[L3]	0.081449	0.021356	-0.00079	0.328557
	Congestive Heart Failure (CHF)	0.269525	0.073366	0.126922	0.416864
	CHF[L2]	0.151511	0.013051	0.02594	0.372765
	CHF[L3]	0.118014	0.013051	0.013427	0.331668
	Arrhythmia (Arr)	0.206914	0.036899	0.137996	0.283298
	Arr[L2]	0.107797	0.003952	0.042722	0.206691
	Arr[L3]	0.030836	0.003135	0.003271	0.098
	Arr[L4]	0.021089	0.002399	0.001962	0.073197
	Arr[L5]	0.02183	0.002435	0.001972	0.074123
	Arr[L6]	0.025362	0.002743	0.002472	0.084984
Peripheral Artery Disease	-0.04873	0.275327	-0.58769	0.491798	
CVA	Stroke	0.781978	0.091318	0.61067	0.966722
	Stroke[L2]	0.4037	0.011461	0.163408	0.73768
	Stroke[L3]	0.142072	0.009589	0.017279	0.410499
	Stroke[L4]	0.236206	0.010205	0.053314	0.50154
Renal	Chronic Kidney Disease (CKD)	0.842725	0.139055	0.605728	1.143257
	CKD[L2]	0.518513	0.01307	0.270452	0.921447
	CKD[L3]	0.043151	0.003882	0.005324	0.131483
	CKD[L4]	0.056048	0.005493	0.006196	0.181499
	CKD[L5]	0.225013	0.015071	0.035734	0.536295
Metabolic	Diabetes Mellitus (DM)	0.386649	0.038848	0.315486	0.467351
	DM[L2]	0.217345	0.003384	0.123763	0.342049
	DM[L3]	0.049183	0.00275	0.00679	0.135443
	DM[L4]	0.035684	0.002165	0.004144	0.104461
	DM[L5]	0.052721	0.002552	0.008262	0.127662
	DM[L6]	0.031715	0.001949	0.003493	0.093711
	Lipid	0.498728	0.068279	0.365821	0.636966
	Lipid[L2]	0.440733	0.004888	0.261312	0.626467
Lipid[L3]	0.057995	0.004888	0.006029	0.18197	
GILIV	Liver	0.807865	0.102893	0.632982	1.035853
	Liver[L2]	0.498323	0.010576	0.266522	0.848682
	Liver[L3]	0.154523	0.008837	0.028778	0.387139
	Liver[L4]	0.155019	0.009234	0.024971	0.391196
	Gastrointestinal disease (GID)	0.971765	0.078902	0.821113	1.127105

	GID[L2]	0.797555	0.00683	0.521177	1.087994
	GID[L3]	0.17421	0.00683	0.028493	0.411709
Respiratory	Chronic Obstructive Pulmonary Disease (COPD)	1.054557	0.180949	0.720707	1.43213
	COPD[L2]	0.854204	0.018734	0.418053	1.387046
	COPD[L3]	0.200353	0.018734	0.022688	0.60141
	Asthma	1.481823	0.236173	1.018359	1.940204
Dysthyroidism	Hypothyroidism (Hypoth)	0.809764	0.060403	0.692728	0.929966
	Hypoth[L2]	0.591887	0.004773	0.394687	0.817915
	Hypoth[L3]	0.127868	0.004774	0.019065	0.309397
	Hypoth[L4]	0.090009	0.003882	0.011854	0.242219
	Hyperth	1.479465	0.571852	0.35318	2.604114
Hematologic	Anemia	0.872939	0.114071	0.665332	1.11532
	Anemia[L2]	0.748036	0.009246	0.449185	1.092055
	Anemia[L3]	0.124903	0.009246	0.013878	0.362335
	Thrombocytopenia	1.77794	0.275766	1.237905	2.330068
MSK	Osteoarthritis (OA)	0.732732	0.092765	0.565253	0.929261
	OA[L2]	0.586542	0.008107	0.353203	0.887675
	OA[L3]	0.146191	0.008107	0.025296	0.348605
	Osteop	0.632623	0.065177	0.507485	0.764525
	Osteop[L2]	0.56705	0.003875	0.385834	0.75313
	Osteop[L3]	0.065573	0.003875	0.007563	0.183267
Oral Health	Periodontitis	1.326301	0.095104	1.152712	1.523607
	Periodontitis[L2]	1.18852	0.004988	0.901671	1.495978
	Periodontitis[L3]	0.137781	0.004988	0.020904	0.331816
Sensory	Hearing	0.461604	0.090482	0.297582	0.651263
	Hearing[L2]	0.233712	0.01072	0.087032	0.488882
	Hearing[L3]	0.085783	0.009331	0.008942	0.274269
	Hearing[L4]	0.14211	0.011744	0.020134	0.362675
	Eye	0.700673	0.081251	0.563311	0.878643
	Eye[L2]	0.501037	0.006122	0.318461	0.753921
	Eye[L3]	0.039964	0.002679	0.004938	0.1185

	Eye[L4]	0.04458	0.00306	0.005305	0.133565
	Eye[L5]	0.115092	0.006577	0.016767	0.293015
CNS	Depression	1.049915	0.108762	0.840383	1.265493
	Depression[L2]	0.465469	0.014725	0.158678	0.911871
	Depression[L3]	0.584447	0.014725	0.234831	1.026547
	Parkinson (Park)	0.764393	0.306402	0.164649	1.371399
	Park[L2]	0.394865	0.066681	0.017924	1.241619
	Park[L3]	0.369527	0.066681	0.015581	1.222107
	Cognitive Impairment (CI)	1.238126	0.254549	0.774515	1.770587
	CI[L2]	0.874406	0.034934	0.329794	1.676514
	CI[L3]	0.36372	0.034934	0.041151	1.016659
Cancer	Cancer	2.418129	0.178807	2.07605	2.774339