

1 **Retrospective feasibility study of *Mycobacterium tuberculosis* modified**  
2 **lipoprotein as a potential biomarker for TB detection in children**

3  
4 Xinxin Yang,<sup>a,b</sup> Matthew F. Wipperman,<sup>a,c</sup> Sharon Nachman,<sup>d</sup> Nicole S. Sampson<sup>a,#</sup>

5  
6 <sup>a</sup>Department of Chemistry, Stony Brook University, Stony Brook, NY 11794-3400

7 <sup>b</sup>Chronus Pharmaceuticals, Inc., 25 Health Sciences Drive, Stony Brook, NY 11790

8 <sup>c</sup>Current address: Clinical and Translational Science Center, Weill Cornell Medicine,  
9 New York, NY 10065

10 <sup>d</sup>Department of Pediatrics, Renaissance School of Medicine, Stony Brook University,  
11 Stony Brook, NY 11794-3400

12

13 Running title: Retrospective Mtb lipoprotein biomarker in children

14

15 <sup>#</sup>Corresponding author: [nicole.sampson@stonybrook.edu](mailto:nicole.sampson@stonybrook.edu)

16

17 Abstract

18 **Background:** Current TB diagnostic methods available have been developed for adults  
19 and development efforts have neglected the differences in disease and sampling that  
20 occur between adults and children. Diagnostic challenges are even greater in HIV co-  
21 infected children and infants.

22 **Methods and results:** We established a sandwich ELISA assay to detect

23 *Mycobacterium tuberculosis* modified lipoprotein (TLP) ex vivo in plasma. The study

24 population contains plasma samples from 21 patients with active TB and 24 control  
25 samples with no TB, collected in the International Maternal Pediatric Adolescent AIDS  
26 Clinical Trials (IMPAACT) P1041 study. Retrospective analysis was performed and the  
27 result demonstrate that TLP level is associated with TB disease.

28 **Conclusions:** Plasma levels of TLP associate with active TB disease in HIV positive  
29 subjects and can be used as an indicator for TB detection in children.

30 Childhood TB is estimated to contribute 12% of the disease burden, with  
31 approximately 10 million cases in 2019 worldwide (1). Existing gold-standard diagnostic  
32 culture tools fail to confirm TB in most children, who typically have low bacterial counts  
33 and cannot produce sputum like adults. Diagnostic challenges are great in HIV co-  
34 infected children and infants (2), where the clinical presentation of pulmonary TB may  
35 be non-specific (3), acute (4, 5), and chest radiographs may be atypical (2). Although  
36 rates of bacteriological confirmation appear similar in HIV-infected and uninfected  
37 children (6), diagnostic delay and HIV-related immune pathology contribute to higher  
38 rates of TB disease progression with increased disease severity, morbidity, and  
39 mortality (7-10). Infants, young children, and HIV-infected children are at increased risk  
40 of developing TB following infection and of disseminated or severe disease, including  
41 TB meningitis (11). Because TB in children is typically paucibacillary, even if a sputum  
42 sample or gastric aspirate is obtained, the utility of PCR based diagnostic methods like  
43 GeneXpert is limited. More sensitive and child-friendly diagnostic tools are urgently  
44 needed to diagnose TB in children (12).

45 *Mycobacterium tuberculosis* (*Mtb*) is an intracellular pathogen that is capable of  
46 surviving and replicating within macrophages, the frontline of the innate host defense,  
47 and has evolved multiple mechanisms to escape these immune cells (13). One of the  
48 immune evasion strategies of *Mtb* is the deregulation of lipid metabolism, leading to the  
49 formation of foamy macrophages (FM), a hallmark of granulomata in tuberculosis  
50 lesions (14). However, only pathogenic mycobacterial strains including *M. tuberculosis*  
51 (15), *M. avium*, *M. abscessus*, or *M. bovis* , but not non-pathogenic mycobacterial  
52 strains, like *M. smegmatis*, induce foam cell formation upon infection (16, 17). Foam

53 cells are associated with chronic inflammation in many metabolic diseases and certain  
54 cancers besides infectious diseases (18, 19). For example, foamy macrophages are  
55 critical to the initial formation, development, and instability of atherosclerotic plaques  
56 and are therefore therapeutic targets in atherosclerosis. Foam cell formation is induced  
57 primarily by malondialdehyde-modified low density lipoprotein (MDA-LDL) and not by  
58 native or extensively oxidized LDL in atherosclerosis (20). Elevated plasma levels of  
59 MDA-LDL in patients are associated with acute coronary syndromes and are used as  
60 diagnostic tools clinically (21).

61 In this study we identified human lipoprotein modification specific to exposure to  
62 *Mtb*. The pathogen modified host lipoprotein, TLP, is detectable ex vivo in plasma using  
63 a sandwich ELISA assay. We further evaluated the association between the presence  
64 of TLP and TB disease status in children.

65

## 66 MATERIALS AND METHODS

67 ***Preparation of malondialdehyde-conjugated LDL (MDA-LDL) (20) and Mtb-***  
68 ***modified lipoprotein (TLP).*** HepG2 human liver cells (ATCC HB-8065) were grown to  
69 80% confluence in HepG2 growth media (DMEM, 10% fetal bovine serum, 20 mM L-  
70 glutamine, 100 U/mL penicillin, 100 µg/mL streptomycin, and 10 mM HEPES). Cells  
71 were grown for 4-5 days and culture supernatants were then harvested and  
72 concentrated. LDL particles were separated by density gradient ultracentrifugation and  
73 desalted by ultrafiltration through a 100-kDa molecular weight filter. MDA-LDL was  
74 prepared by incubation 2 mg protein/mL of LDL with 2 µM acrolein at 37 °C for 24 h  
75 under nitrogen atmosphere. *Mycobacterium tuberculosis* was cultured in Middlebrook

76 7H9 (broth) supplemented with 0.2% glycerol, 0.5% BSA, 0.08% NaCl, 0.05% (v/v)  
77 tyloxapol to OD~0.7. LDL was added and the culture was incubated at 37 °C for 7 days.  
78 TLP was isolated from the culture supernatant, concentrated and washed with PBS.

79 **Agarose gel electrophoresis and western blot analysis.** Agarose gel  
80 electrophoresis was performed in 0.06 M barbital buffer (pH 8.6). The gel was 0.8% and  
81 stained with Sudan Red 7B. Lipoproteins were separated on a 6% sodium dodecyl  
82 sulfate polyacrylamide gel electrophoresis (SDS-PAGE), proteins were transferred to a  
83 PVDF membrane and immunoblotted with specific antibodies. The primary antibodies  
84 used for western blot were monoclonal anti-LDL (MDA oxidized) antibody (Abcam) and  
85 polyclonal anti-apoB Ab (H-300, Santa Cruz). Membranes were treated with anti-mouse,  
86 or anti-rabbit IgG HRP conjugates as secondary antibodies.

87 **THP-1 macrophage preparation and treatment.** THP-1 cells (ATCC TIB-202)  
88 were maintained in RPMI-1640 medium containing heat-inactivated 10% fetal bovine  
89 serum (FBS), 0.05 mM 2-mercaptoethanol, 100 U/mL penicillin and 100 mg/mL  
90 streptomycin (RPMI complete medium). The cells were plated into 6-well plates  
91 containing coverslips ( $1.5 \times 10^6$  /well), treated with phorbol 12-myristate 13-acetate  
92 (PMA, 150 nM) in RPMI complete media. Media was replaced with fresh RPMI  
93 complete media at 48 hours after plating. At 72 hours after media change, THP-1  
94 macrophages were treated with LDL, MDA-LDL and TLP at 200 µg/mL in PBS for 24  
95 hours. All cells were incubated in a humid atmosphere at 37°C with 95% air and 5%  
96 CO<sub>2</sub>.

97 **Lipid body staining and immunostaining.** Following lipoprotein treatment,  
98 macrophages were washed with PBS and fixed with 4% paraformaldehyde at room

99 temperature for 30 minutes. Cells were stained with Oil Red O solution for 20 minutes at  
100 room temperature. The slides were then counterstained with haematoxylin and  
101 observed under an inverted microscope (Zeiss Axiovert 200M). Percent foam cell  
102 formation was quantified by counting stained versus total cells in 10 fields.

103 **Generation of anti-TLP antibodies** (22, 23). Monoclonal antibodies against  
104 TLP were identified utilizing Human Combinatorial Antibody Library (HuCAL, Bio-Rad  
105 AbD Serotec GmbH). The HuCAL phage display library was depleted of antibodies that  
106 recognize intact LDL. The depleted library was panned for three rounds of binding,  
107 elution, and amplification to isolate antibodies specific for TLP. Binding of anti-TLP  
108 antibodies to control antigens including BSA, HSA, N1-CD33-His6 and intact LDL, was  
109 checked by indirect ELISA assays, with anti-TLP antibodies as primary antibodies and  
110 an anti-Fab-AP conjugate (Bio-Rad) as a secondary antibody.

111 **Sandwich ELISA assay.** Briefly, 96 well plates were coated overnight at 4°C  
112 with 5 µg/mL capture antibody (AbD28580, amino acid sequence shown in Table S2) in  
113 phosphate buffered saline (PBS). Plates were washed with PBS containing 0.05%  
114 Tween-20 (PBST) 3 times, blocked with 3% BSA in PBST for 1 hour at room  
115 temperature. Then serial dilutions of standards and test samples in HISPEC assay  
116 diluent (Bio-Rad) were loaded and allowed to react for 2 hours at room temperature.  
117 Plates were then washed 3 times with PBST and treated with 2 µg/mL of HRP  
118 conjugated detection antibody (AbD28582) in HISPEC assay diluent for 1 hour at room  
119 temperature. After washing 6 times with PBST, the plates were developed with  
120 QuantaBlu fluorogenic peroxidase substrate kit (Thermo Scientific) for 30 min at room  
121 temperature. Fluorescence was recorded (ex. 320 ± 25nm, em. 430 ± 35nm).

122           **Subjects and samples.** Retrospective analysis was performed on a total of 45  
123 plasma samples from International Maternal Pediatric Adolescent AIDS Clinical Trails  
124 (IMPAACT) P1041 (24, 25). P1041 was a Phase II/ III, randomized, double-blind,  
125 placebo-controlled clinical trial to evaluate the efficacy of isoniazid prophylaxis on TB  
126 disease and latent *Mtb* infection free survival in HIV-infected and HIV-exposed, but  
127 uninfected infants up to 192 weeks of follow up (25, 26). Samples include 24 with noTB  
128 and 21 with TBDIS, all HIV infected. Patients without *Mtb* infection were categorized as  
129 noTB; patients with a positive tuberculin skin test but lacking any clinical, radiographic  
130 or laboratory evidence of disease caused by *Mtb* were categorized as latent TB  
131 infection (LTBI); and patients presenting clinical, radiographic or laboratory evidence of  
132 disease caused by *Mtb* were categorized as TBDIS. Plasma samples were collected,  
133 frozen and thawed before use.

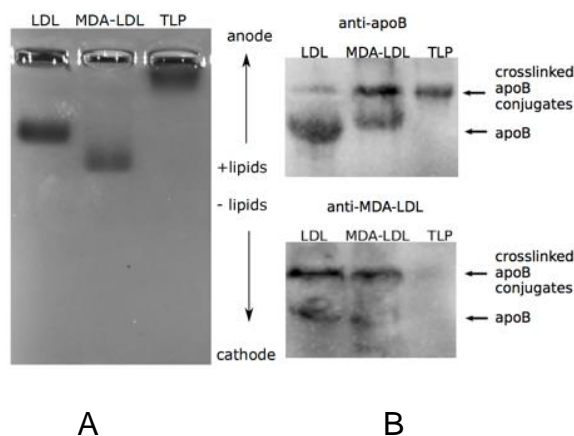
134           **Statistical Analysis.** Categorical variables were compared using t-student test,  
135 whenever appropriate. Non-parametric tests (Mann-Whitney) were used for non-  
136 normally distributed variables. Assay accuracy, including 95% confidence intervals, was  
137 assessed using sensitivity, specificity, predictive values and area under the ROC in the  
138 TB and non-TB groups. Statistical calculations were performed with GraphPad  
139 Prism® Software.

140

## 141 **RESULTS**

142           ***Mtb* modified lipoprotein (TLP) is different from MDA-LDL.** We purified and  
143 treated native LDL with *Mycobacterium tuberculosis* in vitro to obtain *Mtb* modified  
144 lipoprotein (TLP). Decreased mobility of TLP in agarose electrophoresis indicates that

145 TLP is more positively charged than native LDL (Figure 1A). In contrast, MDA-LDL, one  
146 of the end products of lipid peroxidation, is more negatively charged than native LDL  
147 (20). The increased size of TLP compared to native LDL was also confirmed by  
148 dynamic light scattering analysis (Table S1). Furthermore, TLP is recognized by anti-  
149 apolipoprotein B (apoB) antibodies but not anti-MDA-LDL antibodies, indicating TLP  
150 does not contain a malondialdehyde-modified apoB derivative (Figure 1B). We  
151 demonstrate that LDL is altered in the presence of *Mtb*, and the resulting TLP is distinct  
152 from the typical atherosclerotic species malondialdehyde-modified LDL (MDA-LDL)  
153 present in human blood (27).  
154



155  
156 A B  
157 **Figure 1. TLP is different from MDA-LDL.** (A) an agarose gel electrophoresis showing  
158 TLP is larger in size and more positively charged than native LDL. (B) Immunoblots  
159 showing TLP is recognized by anti- apolipoprotein B (apoB) antibodies (top) but not  
160 anti- MDA-LDL antibodies (bottom).

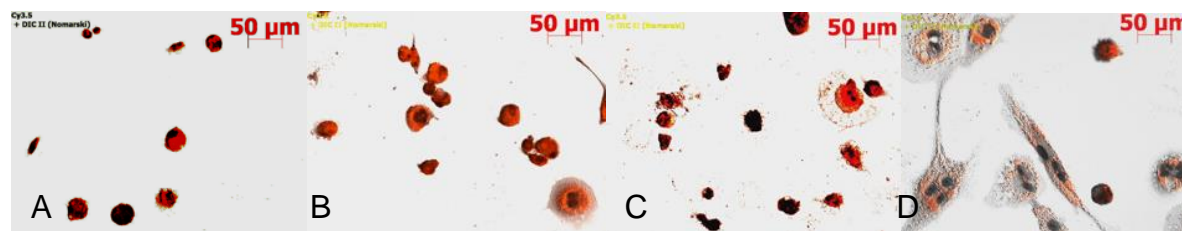
161  
162 ***Mtb* modified LDL induces lipid body accumulation in macrophages.** The  
163 induction of foamy macrophages have been reported as hallmarks in many pathologies



164 associated with chronic proinflammatory stimuli including atherosclerosis (15). It has  
165 also been reported that *Mtb* lipids induce the formation of giant multinuclear  
166 macrophages (28). We therefore used foamy macrophage formation as a tool to assess  
167 the bioactive components that trigger a tissue response similar to granuloma formation  
168 in TB. Lipid bodies were stained with Oil red O. The buffer control showed no  
169 accumulation of lipid bodies and the cells remained rounded (Figure 2A). LDL treated  
170 macrophage showed some lipid accumulation, with a commensurate increase in cell  
171 size (Figure 2B). In contrast, MDA-LDL, commonly associated with atherosclerosis,  
172 treated macrophages exhibited more extensive accumulation of lipid bodies than the  
173 LDL treated macrophages. These macrophage phenotypes are consistent with previous  
174 reports of in vitro foamy macrophage formation (20, 29). Most importantly, TLP treated  
175 macrophages had extensive lipid body accumulation per cell compared to macrophages  
176 treated with other LDLs (Figure 2 and S1B). Moreover, the TLP-treated macrophage  
177 morphology was distinct from other samples. The majority of the TLP-treated  
178 macrophages became multinucleated (Figure 2D and S1A) and developed long  
179 filopodia consistent with cell migration or exocytosis. Thus, we hypothesize that the  
180 modified LDL is detectable in vivo to serve as a biomarker for TB disease, and an  
181 antibody specific for recognition of TLP is an *Mtb*-specific indicator of infection and  
182 progression to (active) TB disease.

183

184



185

186

187 **Figure 2. TLP induces lipid body accumulation in macrophages.** Microscopic

188 images of Oil Red O-hematoxylin stained THP-1 macrophage culture treated with PBS

189 control (A), LDL (B), MDA-LDL (C) and TLP (D) at 200 µg/mL for 2 days.

190

191 ***Anti-TLP monoclonal antibodies were generated and a TLP Sandwich***

192 ***ELISA assay was established.*** We generated 13 anti-TLP monoclonal antibodies

193 (Fad-A-FH, bivalent Fab-bacterial alkaline phosphatase fusion antibody followed by

194 FLAG<sup>®</sup> and His6-tag) from the Human Combinatorial Antibody Library (HuCAL, Bio-Rad

195 AbD Serotec GmbH) using in vitro selection and counter selection (22, 23). HuCAL is a

196 phage display library containing highly specific, fully human monoclonal antibodies, with

197 DNA sequence encoded for each antibody fragment. The HuCAL phage display library

198 was depleted of antibodies that recognize LDL (Figure S2). The depleted library was

199 panned for three rounds of binding, elution, and amplification to isolate antibodies

200 specific for TLP. Among the antibody hits selected, 13 antibodies were identified as

201 unique by DNA sequencing. These antibodies were produced heterologously for further

202 development. The cross-reactivity with native LDL, human serum albumin, bovine

203 serum albumin, and His<sub>6</sub> affinity tag was determined in an indirect ELISA format. Eight

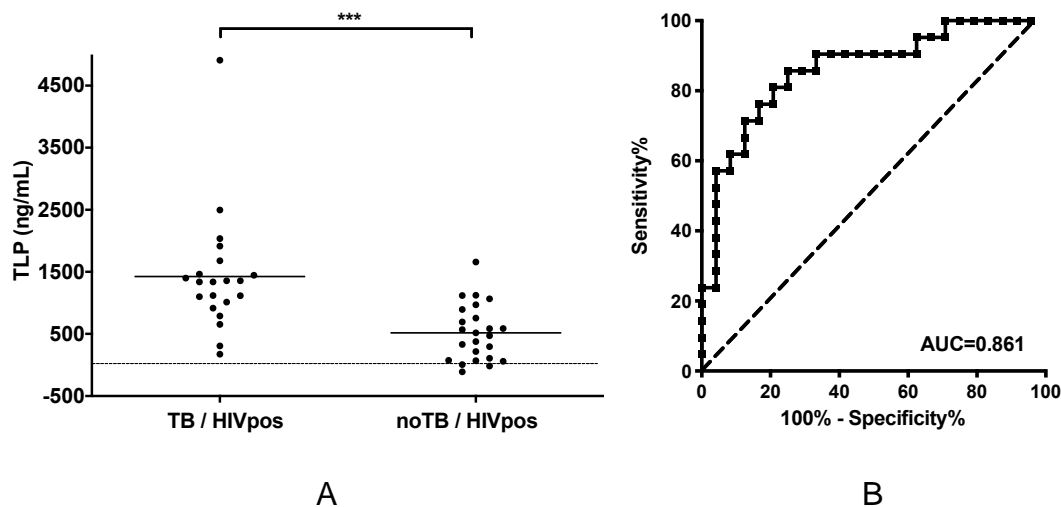
204 antibodies showed a specific signal for TLP at least 4-fold above native LDL

205 background (Figure S2). We tested pairwise combinations of antibodies to identify

206 antibody pairs that have non-overlapping epitopes suitable for use in a sandwich ELISA  
207 (Figure S3A). 5 sandwich pairs were identified with good signal over background and  
208 the assay conditions were optimized for the best pair, AbD28582 and AbD28580 (amino  
209 acid sequence shown in Table S2). We established the linear response of the sandwich  
210 ELISA (Figure S3B) to antigen spiked into pediatric plasma. TLP is specifically detected  
211 at  $\geq 4$ ppm in the presence of plasma LDL, which is around  $10^6$  ng/mL (30).

212 ***Levels of TLP are increased in patients with active TB compared to no TB***  
213 ***controls.*** We assayed stored plasma samples from the HIV IMPAACT P1041 trial for  
214 the presence of TLP. The median plasma levels of TLP was 494 ng/mL in control  
215 subjects, and 2.7 fold higher in active TB subjects (Figure 3A). The difference between  
216 control subjects and active TB subjects is significant ( $p < 0.001$ ). The receiver operating  
217 characteristic (ROC) analysis describes the relationship between the sensitivity and  
218 specificity at any cut-off values. An ROC curve of TLP concentration for active TB  
219 versus control subjects is presented in Figure 3B. The area under the ROC curve (AUC)  
220 is 0.86 (95% CI=0.75-0.97,  $p < 0.0001$ ). An optimal cutoff of 1064 ng/mL rendered 71%  
221 sensitivity and 88% specificity. Alternatively, a cutoff of 1230 ng/mL provided 57%  
222 sensitivity and of 96% specificity.

223



224

225

226

227

228

229

230

231

232

233

234

235

236

237

238

239

240

241

**Figure 3. Retrospective analysis of P1041 HIV positive plasma samples. (A)**

Plasma levels of TLP in HIV positive subjects clinically diagnosed probably having active stage tuberculosis disease (TB) and not having TB (noTB). Individual patients are depicted as dots with group mean. The dashed line represents the detection limit of the assay. \*\*\*  $p < 0.001$ . (B) ROC curve of TLP concentration for active TB versus control subjects of HIV positive patients. AUC, area under curve. The dashed line represents the no-discrimination line from the left bottom to the top right corners.

We also monitored apoB levels, i.e., LDL levels, of all the samples using Human apoB ELISA kits (ab190806, Abcam) and found there was no linear correlation between TLP and apoB levels (Figure S5A), suggesting that plasma LDL fluctuation does not interfere with TLP detection. There is a weak correlation between TLP levels and time before or after diagnosis (Figure S5). The samples collected before diagnosis may represent disease progression from no infection or infection but without clinical signs of disease to outward manifestation of disease. Samples collected after diagnosis may represent a mixed outcome of disease progression and anti-tubercular treatment. We

242 do not have additional sample sets to demonstrate if anti-tubercular treatment affects  
243 TLP levels. However, the discrimination of TLP levels between control subjects and  
244 active TB subjects (post diagnosis with treatment less than 40 weeks) was improved  
245 with the exclusion of samples collected after 40 weeks of treatment ( $p < 0.0001$ ), which  
246 may represent patients clear of TB. ROC (Receiver operating characteristic) analysis  
247 provided an AUC (area under the ROC curve) of 0.88 (95% CI=0.76-0.99,  $p < 0.0001$ ).  
248 An optimal cutoff of 632 ng/mL gave 67% sensitivity and 93% specificity. The results  
249 provide further evidence that TLP levels are associated with active TB disease. Overall,  
250 the results clearly highlight the potential of TLP as a biomarker in the diagnosis of active  
251 TB in HIV positive child.

252

## 253 **DISCUSSION**

254 The wide spectrum of disease observed in children, and the non-specific signs  
255 and symptoms especially in young and HIV+ children, contribute to diagnostic delay and  
256 missed opportunities to detect TB, which in turn, favors TB disease progression and  
257 poor treatment outcomes. There is urgent need to search for a “Rapid Non-sputum-  
258 based Biomarker Test for Tuberculosis Detection” (12). Most of the biomarkers currently  
259 studied are host-derived biomarkers including metabolites and cytokines,<sup>(31, 32)</sup> the  
260 levels of which can be affected by many confounding factors. On the other hand, *Mtb*  
261 products can be detected directly in blood, sputum or urine, and are increasingly being  
262 used for diagnosis.<sup>(33)</sup> We have characterized a unique biomolecule, *Mtb* modified  
263 lipoprotein, which results from a combination of host and *Mtb* pathogen activity.  
264 Functionally, TLP increases the flux of lipid into activated macrophages, thereby

265 stimulating their conversion into foamy multi-nucleated macrophages. The TLP-  
266 stimulated macrophages accumulate lipid bodies but have a distinct phenotype from  
267 MDA-LDL-stimulated macrophages (Figure 2). We reason that detection of this  
268 biomolecule in patient plasma may withstand the heterogeneity associated with  
269 variations derived from host and be pathogen or disease specific. Thus, TLP detection  
270 may be used as TB diagnosis in young children.

271 The lipoprotein modification can take place in macrophages in contact with *M.*  
272 *tuberculosis*. There are also reports demonstrating that extracellular vesicles carrying  
273 bacterial components are released from infected macrophages and circulated beyond  
274 the site of infection (34), where host lipoproteins could be modified via contact with the  
275 extracellular vesicles. In addition, the intracellular bacilli are able to avoid killing by  
276 escaping phagosome-lysosome fusion. In certain individuals, especially children below  
277 5 years of age and immunosuppressed subjects, the extracellular bacilli may disperse to  
278 distant metastatic sites via lymphatics and the bloodstream (35), where host lipoproteins  
279 may be modified by direct contact with *M. tuberculosis*. Our data demonstrate that the  
280 modified lipoprotein in the present study is distinct from other commonly recognized  
281 disease associated LDLs, which are typically negatively charged and smaller in particle  
282 size compared to native LDL (36).

283 The present study established a rapid, non-invasive, and robust sandwich ELISA  
284 assay for the detection of a novel biomolecule TLP in plasma. We demonstrate that  
285 plasma levels of TLP are significantly distinguishable in HIV positive subjects with active  
286 TB disease compared to no TB controls (Figure 2). The significant elevation of plasma  
287 levels of TLP in HIV positive subjects with active TB disease suggests the detection of

288 TLP associate with TB active disease in HIV positive subjects. The AUC value of 0.86  
289 evidenced the diagnostic value of TLP for TB detection in child. The target product  
290 profiles (TPP) adopted by the World Health Organization (WHO) in 2015 for a “Rapid  
291 Non-sputum-based Biomarker Test for Tuberculosis Detection” is a diagnostic  
292 sensitivity  $\geq 66\%$  for microbiologically confirmed pediatric TB and 98% specificity for a  
293 pediatric test (12). The TPP proposed sensitivity is similar to the sensitivity of the Xpert  
294 MTB/RIF assay in microbiologically confirmed samples. Our assay renders 57%  
295 sensitivity and 96% specificity, which has the potential to meet the WHO TPP for  
296 detection of active TB in children, given the highly heterogenous population of P1041  
297 samples, with respect to the bacteriological and clinical status.

298 Samples used in our study were obtained from IMPAACT P1041 clinical trial. The  
299 accuracy of TB diagnosis for the P1041 trial samples is not known due to the absence  
300 of good pediatric TB diagnostics. In addition, microbiological confirmation of TB disease  
301 was not obtained for any of these patients in the P1041 trial. TB disease subjects used  
302 in the present study are patients infected with TB presenting clinical symptoms of  
303 disease. The ELISA assays were performed retrospectively and the variance in storage  
304 conditions might affect the antigen integrity and therefore the accuracy of the assay. We  
305 have insufficient samples to include other clinical characteristics of the patients into data  
306 analysis. The clinical characteristics include but not limited to BCG administration,  
307 immunosuppression status like CD4 counts, or clinical manifestation of tuberculosis  
308 (pulmonary and extra-pulmonary TB). The consideration of those characteristics may  
309 help define the limitation of our TLP assay or render improved accuracy with the  
310 combination of other clinical factors.

311 We focused on HIV positive subjects in the current study. TB diagnosis is particularly  
312 difficult among HIV co-infected individuals who may have atypical, nonspecific clinical  
313 presentation, high rates of smear negative disease and high rates of extrapulmonary TB  
314 (37). P1041 samples were obtained from TB endemic settings, therefore patients were  
315 typically being diagnosed at more advanced stages than those living in the US.  
316 Therefore, the heterogenous stages of TB disease may contribute to the wide dispersity  
317 of TLP levels in TB disease subjects (Figure 2A), which is common among TB  
318 diagnostic assays. In addition, the duration of anti-tubercular treatment was not  
319 consistent among patients in the present study. Change of LDL modification is a  
320 dynamic process and may have the potential to monitor treatment outcome. Although  
321 not statistically significant, the slight decrease in the TLP level post diagnosis/ anti-  
322 tubercular treatment of 40 weeks may be related to a reduction in microbial load (Figure  
323 S4C). Further studies are required to elucidate the effect of different disease status  
324 and/or treatment status on TLP levels in plasma, and to extend our preliminary results  
325 to other populations such as HIV negative subjects and adults.

326 It is a growing notion in the field that a single biomarker will not be sufficient for  
327 distinguishing TB status in different patient groups, and multiple biomarkers may be  
328 used to increase sensitivity and specificity. Further gains in clinical sensitivity and  
329 specificity may be obtained by combining the current assay with other biomarkers or  
330 diagnostic tests.

331

332 **ACKNOWLEDGMENTS**



333 Research reported in this publication was supported by the National Heart, Lung,  
334 and Blood Institute of the National Institutes of Health under Award Number  
335 U01HL127522, and National Institute of Allergy and Infectious Diseases (NIAID) under  
336 award number R41AI136071 to Chronus Pharmaceuticals, Inc with a subcontract to  
337 Stony Brook University (NSS) and the National Center for Advancing Translational  
338 Sciences under award number TL1TR002386 (MFW). Overall support for the  
339 International Maternal Pediatric Adolescent AIDS Clinical Trials (IMPAACT) Network  
340 was provided by the National Institute of Allergy and Infectious Diseases (NIAID) of the  
341 National Institutes of Health (NIH) under Award Numbers UM1AI068632 (IMPAACT  
342 LOC), UM1AI068616 (IMPAACT SDMC) and UM1AI106716 (IMPAACT LC), with co-  
343 funding from the Eunice Kennedy Shriver National Institute of Child Health and Human  
344 Development (NICHD) and the National Institute of Mental Health (NIMH). The content  
345 is solely the responsibility of the authors and does not necessarily represent the official  
346 views of the NIH.

347

## 348 REFERENCES

- 349 1. WHO. 2020. Global tuberculosis report  
350 <https://apps.who.int/iris/bitstream/handle/10665/336069/9789240013131-eng.pdf>  
351 Accessed 16 March 2021.
- 352 2. Cotton MF, Schaaf HS, Hesselning AC, Madhi SA. 2004. HIV and childhood  
353 tuberculosis: the way forward. Int J Tuberc Lung Dis 8:675-82.

- 354 3. Marais BJ, Gie RP, Obihara CC, Hesselning AC, Schaaf HS, Beyers N. 2005. Well  
355 defined symptoms are of value in the diagnosis of childhood pulmonary  
356 tuberculosis. Arch Dis Child 90:1162-5.
- 357 4. Moore DP, Klugman KP, Madhi SA. 2010. Role of Streptococcus pneumoniae in  
358 hospitalization for acute community-acquired pneumonia associated with culture-  
359 confirmed *Mycobacterium tuberculosis* in children: a pneumococcal conjugate  
360 vaccine probe study. Pediatr Infect Dis J 29:1099-04.
- 361 5. Zar HJ, Tannenbaum E, Apolles P, Roux P, Hanslo D, Hussey G. 2000. Sputum  
362 induction for the diagnosis of pulmonary tuberculosis in infants and young  
363 children in an urban setting in South Africa. Arch Dis Child 82:305-8.
- 364 6. Walters E, Cotton MF, Rabie H, Schaaf HS, Walters LO, Marais BJ. 2008.  
365 Clinical presentation and outcome of tuberculosis in human immunodeficiency  
366 virus infected children on anti-retroviral therapy. BMC Pediatr 8:1.
- 367 7. Jeena PM, Mitha T, Bamber S, Wesley A, Coutsooudis A, Coovadia HM. 1996.  
368 Effects of the human immunodeficiency virus on tuberculosis in children. Tuber  
369 Lung Dis 77:437-43.
- 370 8. Schaaf HS, Gie RP, Beyers N, Smuts N, Donald PR. 1993. Tuberculosis in  
371 infants less than 3 months of age. Arch Dis Child 69:371-4.
- 372 9. Jeena PM, Pillay P, Pillay T, Coovadia HM. 2002. Impact of HIV-1 co-infection on  
373 presentation and hospital-related mortality in children with culture proven  
374 pulmonary tuberculosis in Durban, South Africa. Int J Tuberc Lung Dis 6:672-8.

- 375 10. Madhi SA, Huebner RE, Doedens L, Aduc T, Wesley D, Cooper PA. 2000. HIV-1  
376 co-infection in children hospitalised with tuberculosis in South Africa. *Int J Tuberc*  
377 *Lung Dis* 4:448-54.
- 378 11. Marais BJ, Gie RP, Schaaf HS, Hesselning AC, Obihara CC, Starke JJ, Enarson  
379 DA, Donald PR, Beyers N. 2004. The natural history of childhood intra-thoracic  
380 tuberculosis: a critical review of literature from the pre-chemotherapy era. *Int J*  
381 *Tuberc Lung Dis* 8:392-402.
- 382 12. Denkinger CM, Kik SV, Cirillo DM, Casenghi M, Shinnick T, Weyer K, Gilpin C,  
383 Boehme CC, Schito M, Kimerling M, Pai M. 2015. Defining the needs for next  
384 generation assays for tuberculosis. *J Infect Dis* 211 Suppl 2:S29-38.
- 385 13. Abdalla AE, Ejaz H, Mahjoob MO, Alameen AAM, Abosalif KOA, Elamir MYM,  
386 Mousa MA. 2020. Intelligent Mechanisms of Macrophage Apoptosis Subversion  
387 by *Mycobacterium*. *Pathogens* 9:218.
- 388 14. Genoula M, Marin Franco JL, Dupont M, Kviatcovsky D, Milillo A, Schierloh P,  
389 Morana EJ, Poggi S, Palmero D, Mata-Espinosa D, Gonzalez-Dominguez E,  
390 Leon Contreras JC, Barrionuevo P, Rearte B, Cordoba Moreno MO, Fontanals A,  
391 Crotta Asis A, Gago G, Cougoule C, Neyrolles O, Maridonneau-Parini I,  
392 Sanchez-Torres C, Hernandez-Pando R, Verollet C, Lugo-Villarino G, Sasiain  
393 MDC, Balboa L. 2018. Formation of Foamy Macrophages by Tuberculous Pleural  
394 Effusions Is Triggered by the Interleukin-10/Signal Transducer and Activator of  
395 Transcription 3 Axis through ACAT Upregulation. *Front Immunol* 9:459.

- 396 15. Russell DG, Cardona PJ, Kim MJ, Allain S, Altare F. 2009. Foamy macrophages  
397 and the progression of the human tuberculosis granuloma. *Nat Immunol* 10:943-  
398 8.
- 399 16. Viljoen A, Blaise M, de Chastellier C, Kremer L. 2016. MAB\_3551c encodes the  
400 primary triacylglycerol synthase involved in lipid accumulation in *Mycobacterium*  
401 abscessus. *Mol Microbiol* 102:611-627.
- 402 17. Caire-Brandli I, Papadopoulos A, Malaga W, Marais D, Canaan S, Thilo L, de  
403 Chastellier C. 2014. Reversible lipid accumulation and associated division arrest  
404 of *Mycobacterium avium* in lipoprotein-induced foamy macrophages may  
405 resemble key events during latency and reactivation of tuberculosis. *Infect*  
406 *Immun* 82:476-90.
- 407 18. Guerrini V, Gennaro ML. 2019. Foam Cells: One Size Doesn't Fit All. *Trends*  
408 *Immunol* 40:1163-1179.
- 409 19. Agarwal P, Combes TW, Shojaee-Moradie F, Fielding B, Gordon S, Mizrahi V,  
410 Martinez FO. 2020. Foam Cells Control *Mycobacterium tuberculosis* Infection.  
411 *Front Microbiol* 11:1394.
- 412 20. Watanabe K, Nakazato Y, Saiki R, Igarashi K, Kitada M, Ishii I. 2013. Acrolein-  
413 conjugated low-density lipoprotein induces macrophage foam cell formation.  
414 *Atherosclerosis* 227:51-7.
- 415 21. Holvoet P, Vanhaecke J, Janssens S, Van de Werf F, Collen D. 1998. Oxidized  
416 LDL and malondialdehyde-modified LDL in patients with acute coronary  
417 syndromes and stable coronary artery disease. *Circulation* 98:1487-1494.

- 418 22. Knappik A, Ge L, Honegger A, Pack P, Fischer M, Wellenhofer G, Hoess A, Wolle  
419 J, Pluckthun A, Virnekas B. 2000. Fully synthetic human combinatorial antibody  
420 libraries (HuCAL) based on modular consensus frameworks and CDRs  
421 randomized with trinucleotides. *J Mol Biol* 296:57-86.
- 422 23. Prassler J, Thiel S, Pracht C, Polzer A, Peters S, Bauer M, Norenberg S, Stark Y,  
423 Kolln J, Popp A, Urlinger S, Enzelberger M. 2011. HuCAL PLATINUM, a  
424 synthetic Fab library optimized for sequence diversity and superior performance  
425 in mammalian expression systems. *J Mol Biol* 413:261-78.
- 426 24. Madhi SA, Nachman S, Violari A, Kim S, Cotton MF, Bobat R, Jean-Philippe P,  
427 McSherry G, Mitchell C, Team PS. 2011. Primary isoniazid prophylaxis against  
428 tuberculosis in HIV-exposed children. *N Engl J Med* 365:21-31.
- 429 25. Anonymous. A randomized, double blind, placebo controlled trial to determine  
430 the efficacy of isoniazid (INH) in preventing tuberculosis disease and latent  
431 tuberculosis infection among infants with perinatal exposure to HIV.  
432 [https://impaactnetwork.org/DocFiles/P1041/P1041V2\\_11Jul07.pdf](https://impaactnetwork.org/DocFiles/P1041/P1041V2_11Jul07.pdf). Accessed 10  
433 Oct 2019.
- 434 26. Gupta A, Montepiedra G, Gupte A, Zeldow B, Jubulis J, Detrick B, Violari A,  
435 Madhi S, Bobat R, Cotton M, Mitchell C, Spector S, Impaact N, Team PS. 2016.  
436 Low Vitamin-D Levels Combined with PKP3-SIGIRR-TMEM16J Host Variants Is  
437 Associated with Tuberculosis and Death in HIV-Infected and -Exposed Infants.  
438 *PLoS One* 11:e0148649.
- 439 27. Yoshida M, Higashi K, Kobayashi E, Saeki N, Wakui K, Kusaka T, Takizawa H,  
440 Kashiwado K, Suzuki N, Fukuda K, Nakamura T, Watanabe S, Tada K, Machi Y,

- 441 Mizoi M, Toida T, Kanzaki T, Tomitori H, Kashiwagi K, Igarashi K. 2010.  
442 Correlation between images of silent brain infarction, carotid atherosclerosis and  
443 white matter hyperintensity, and plasma levels of acrolein, IL-6 and CRP.  
444 *Atherosclerosis* 211:475-9.
- 445 28. Puissegur MP, Lay G, Gilleron M, Botella L, Nigou J, Marrakchi H, Mari B,  
446 Duteyrat JL, Guerardel Y, Kremer L, Barbry P, Puzo G, Altare F. 2007.  
447 Mycobacterial lipomannan induces granuloma macrophage fusion via a TLR2-  
448 dependent, ADAM9- and beta1 integrin-mediated pathway. *J Immunol* 178:3161-  
449 9.
- 450 29. Nezami N, Ghorbanihaghjo A, Rashtchizadeh N, Argani H, Tafrishinejad A,  
451 Ghorashi S, Hajhosseini B. 2011. Atherogenic changes of low-density lipoprotein  
452 susceptibility to oxidation, and antioxidant enzymes in pulmonary tuberculosis.  
453 *Atherosclerosis* 217:268-73.
- 454 30. Sacks FM, Moye LA, Davis BR, Cole TG, Rouleau JL, Nash DT, Pfeffer MA,  
455 Braunwald E. 1998. Relationship between plasma LDL concentrations during  
456 treatment with pravastatin and recurrent coronary events in the cholesterol and  
457 recurrent events trial. *Circulation* 97:1446-1452.
- 458 31. Weiner J, Kaufmann SH. 2014. Recent advances towards tuberculosis control:  
459 vaccines and biomarkers. *J Intern Med* 275:467-80.
- 460 32. Walzl G, Ronacher K, Hanekom W, Scriba TJ, Zumla A. 2011. Immunological  
461 biomarkers of tuberculosis. *Nat Rev Immunol* 11:343-54.

- 462 33. Goletti D, Lee MR, Wang JY, Walter N, Ottenhoff THM. 2018. Update on  
463 tuberculosis biomarkers: from correlates of risk, to correlates of active disease  
464 and of cure from disease. *Respirology* 23:455-466.
- 465 34. Athman JJ, Wang Y, McDonald DJ, Boom WH, Harding CV, Wearsch PA. 2015.  
466 Bacterial membrane vesicles mediate the release of *Mycobacterium tuberculosis*  
467 lipoglycans and lipoproteins from infected macrophages. *J Immunol* 195:1044-53.
- 468 35. Grosset J. 2003. *Mycobacterium tuberculosis* in the extracellular compartment:  
469 an underestimated adversary. *Antimicrob Agents Chemother* 47:833-6.
- 470 36. Orekhov AN. 2018. LDL and foam cell formation as the basis of atherogenesis.  
471 *Curr Opin Lipidol* 29:279-284.
- 472 37. Scott L, da Silva P, Boehme CC, Stevens W, Gilpin CM. 2017. Diagnosis of  
473 opportunistic infections: HIV co-infections - tuberculosis. *Curr Opin HIV AIDS*  
474 12:129-138.
- 475