

1 **Combined prenatal *Lactobacillus reuteri* and ω -3 supplementation**
2 **synergistically modulates DNA methylation in neonatal T helper cells**

3 Johanna Huoman PhD¹, David Martínez-Enguita MSc², Elin Olsson MSc², Jan Ernerudh MD
4 PhD³, Lennart Nilsson MD PhD⁴, Karel Duchén MD PhD⁴, Mika Gustafsson PhD^{2*} and Maria
5 C Jenmalm PhD^{1*}

6 ¹ Division of Inflammation and Infection, Department of Biomedical and Clinical Sciences,
7 Linköping University, Linköping, Sweden

8 ² Department of Physics, Chemistry and Biology, Linköping University, Linköping, Sweden

9 ³ Department of Clinical Immunology and Transfusion Medicine, Department of Biomedical
10 and Clinical Sciences, Linköping University, Linköping, Sweden

11 ⁴ Allergy Center, Department of Biomedical and Clinical Sciences, Linköping University,
12 Linköping, Sweden

13

14 *shared senior authorship

15

16 **Corresponding author:** Johanna Huoman, PhD
17 Division of Inflammation and Infection
18 Department of Biomedical and Clinical Sciences
19 Faculty of Medicine and Health Sciences
20 Linköping University
21 Lab 1, Building 420, entrance 68, level 12
22 581 83 Linköping, Sweden
23 E-mail: johanna.huoman@liu.se
24 Phone: +46 76 069 63 38

25

26 **Word count:** 3491 words (Introduction, Results and Discussion. Including Methods, 5841
27 words)

28 **Number of figures:** 6 Figures

29 **Number of tables:** 2 Tables

30 **Material in electronic repository:** 12 Supplementary Figures, 11 Supplementary Tables,
31 mainly collected in Supplementary Appendix.

32

33 **ABSTRACT**

34 **Background:** Environmental exposures may alter DNA methylation patterns of T helper
35 cells. As T helper cells are instrumental for allergy development, changes in methylation
36 patterns may constitute a mechanism of action for allergy preventive interventions. While
37 epigenetic effects of separate perinatal probiotic or ω -3 fatty acid supplementation have been
38 studied previously, the combined treatment has not been assessed. We aimed to investigate
39 epigenome-wide DNA methylation patterns in cord blood samples from children in a
40 randomised double-blind placebo-controlled allergy prevention trial using pre- and postnatal
41 combined *Lactobacillus reuteri* and ω -3 fatty acid treatment. To this end, >866 000 CpG sites
42 (MethylationEPIC 850K array) in cord blood CD4+ T cells were examined in samples from all
43 four study arms (double-treatment: n=18, single treatments: probiotics n=16, ω -3 n=15, and
44 double placebo: n=14). Statistical and bioinformatic analyses identified treatment-associated
45 differentially methylated CpGs and genes, which were used to identify treatment-induced
46 network modules. Pathway analyses inferred biological relevance, and comparisons were
47 made to an independent allergy data set.

48 **Results:** Comparing the active treatments to the double placebo group, most differentially
49 methylated CpGs and genes were hypermethylated, suggesting induction of transcriptional
50 inhibition. The double-treated group showed the largest number of differentially methylated
51 CpGs, of which many were unique, suggesting synergy between interventions. Clusters
52 within the double-treated network module consisted of immune-related pathways, including T
53 cell receptor signalling, and antigen processing and presentation, with similar pathways
54 revealed for the single-treatment modules. CpGs derived from differential methylation and
55 network module analyses were enriched in an independent allergy data set, particularly in
56 the double-treatment group, proposing treatment-induced DNA methylation changes as
57 relevant for allergy development.

58 **Conclusion:** Prenatal *L. reuteri* and/or ω -3 fatty acid treatment results in hypermethylation
59 and affects immune- and allergy-related pathways in neonatal T helper cells, with potentially

60 synergistic effects between the interventions and relevance for allergic disease. Further
61 studies need to address these findings on a transcriptional level, and whether the results
62 associate to allergy development in the children. Understanding the role of DNA methylation
63 in regulating effects of perinatal probiotic and ω -3 interventions may provide essential
64 knowledge in the development of efficacious allergy preventive strategies.

65

66 Trial registration: ClinicalTrials.gov, ClinicalTrials.gov-ID: NCT01542970. Registered 27th of
67 February 2012 – Retrospectively registered, <https://clinicaltrials.gov/ct2/show/NCT01542970>

68

69 **Key words (max 10):** allergy prevention, combined intervention, cord blood, CD4+ T cells,
70 DNA methylation, *Lactobacillus reuteri*, MethylationEPIC 850K, ω -3 fatty acids, prenatal,
71 postnatal

72

73

74

75

76

77

78

79

80

81

82

83 INTRODUCTION

84 Present-day increases in allergy prevalence in urbanised societies may be caused by the
85 extensive loss of diverse microbial exposures due to changed lifestyle habits, thereby
86 affecting development of appropriate immune responses.^{1,2} This is particularly important
87 throughout the perinatal period, when maternal exposures during pregnancy and
88 breastfeeding lay the foundations of, and influence, immune development of the foetus and
89 the newborn child.³⁻⁶ Hence, the maternal influence on the foetal immune system is
90 significant, and the composition of both the maternal diet and her commensal microbiome is
91 crucial in the process.^{7,8}

92 By supplementing pregnant women, with a high propensity of having an allergic child, during
93 pregnancy and lactation with ω -3 fatty acids and probiotics, it may be possible to modulate
94 the foetal immune system towards tolerance.^{7,9,10} In Westernised societies the dietary fatty
95 acid intake favours ω -6 over ω -3 fatty acids^{11,12}, thereby promoting production of pro-
96 inflammatory mediators, such as prostaglandins and leukotrienes¹³, and possibly sustaining
97 allergic inflammation.¹⁰ However, by ω -3 supplementation this ratio may be altered and
98 promote downstream production of immunoregulatory mediators.¹⁰ ω -3 fatty acids may
99 dampen allergic inflammation by inhibiting effects of IL-4 and IL-13, as well as by preventing
100 isotype switching of B cells to IgE-antibodies.⁷ Indeed, prenatal ω -3 intervention attenuated
101 IL-4 and IL-13 levels in cord blood¹⁴, and decreased the risk of developing asthma in the
102 offspring.¹⁵ Previously, we have investigated the effects of pre- and postnatal ω -3
103 supplementation, demonstrating lower prevalence of sensitisation and IgE-associated
104 eczema throughout the first year of life¹⁶, and a decreased risk of developing any IgE-
105 associated disease up to two years of age¹⁷, in ω -3 compared to placebo-treated children.
106 Several studies point at altered gut microbiomes in children developing allergies¹⁸⁻²³,
107 suggesting that increasing gut microbial diversity by e.g. probiotic intervention may be helpful
108 in allergy prevention.²⁴ Lactobacilli, a commonly used family of probiotic bacteria, induce both
109 innate and adaptive immunostimulatory responses, apart from improving barrier integrity and

110 modulating gut microbiota composition.²⁵ We have previously shown allergy preventive
111 effects on IgE-associated eczema upon supplementation with *Lactobacillus reuteri*.²⁶
112 Interestingly, children whose mothers had allergic symptoms revealed the greatest benefits
113 of the *L. reuteri* treatment²⁶, whereas ω -3 treatment provided most benefit to children whose
114 mothers did not have allergic symptoms.^{16,17} This suggests that combining the treatments
115 could benefit allergy prone children regardless of maternal allergy status, and possible
116 synergistic effects of the immunostimulating probiotics and the immunomodulatory ω -3 fatty
117 acids could occur. However, this has thus far not been studied.

118 A suitable way to evaluate the effects of supplemental interventions would be to study
119 epigenetic modifications, since they regulate transcriptional accessibility of genomic regions
120 in response to environmental stimuli.²⁷ DNA methylation of CpG sites is considered the most
121 stable epigenetic modification, and is known to regulate the differentiation of T helper cells²⁸,
122 cells that are central in development of allergic disease.²⁷ Indeed, differential DNA
123 methylation patterns associate with development of sensitisation^{29,30}, asthma^{31,32} and food
124 allergies^{33,34} in children and adolescents. Epigenetic studies of prenatal fatty acid intervention
125 have shown effects on histone modifications³⁵, while others report conflicting results on DNA
126 methylation patterning.^{36,37} A study on epigenomic modulation of combined *L. rhamnosus*
127 *GG/Bifidobacterium lactis* in obesity³⁸ revealed general hypomethylation, in line with findings
128 from our previous study investigating *L. reuteri* in allergy prevention.³⁹ In newborns whose
129 mothers had been supplemented with *L. reuteri* throughout the last month of pregnancy, this
130 loss of methylation in CD4+ cord blood cells was prominent in genes related to immune
131 activation.³⁹ This indicates that treated children received a head-start in their immune
132 maturation, which hence may affect the development of allergic disease. However, in the
133 context of combining probiotics and ω -3 fatty acids, neither clinical outcomes nor epigenetic
134 effects have yet been studied.

135 In the on-going PROOM-3 trial (PRObiotics and OMEga-3, ClinicalTrials.gov-ID:
136 NCT01542970), the allergy preventive effects of combined *L. reuteri* and ω -3 fatty acids

137 supplementation, from mid-pregnancy throughout the first year of life of the child, are studied.
138 In this paper, we examined epigenome-wide DNA methylation patterns in cord blood CD4+
139 cells from the PROOM-3 cohort. Our hypothesis was that the earlier initiated probiotic
140 treatment will lead to more prominent effects on DNA hypomethylation in immune-related
141 genes compared to the previous study.³⁹ Likewise, we hypothesised that ω -3 fatty acid
142 supplementation will lead to hypomethylation of immune-related sites, and possibly work
143 synergistically with the probiotic intervention to cause the greatest differential methylation in
144 immunological pathways. Our findings indicate that the epigenome is modulated by the
145 prenatal treatment with probiotics and ω -3 fatty acids, which may have implications for
146 developing and improving future allergy prevention strategies.

147

148

149

150

151

152

153

154

155

156

157

158

159

160

161

162 **RESULTS**

163 **Differential DNA methylation analyses reveal mainly hypermethylated CpGs and genes** 164 **upon supplementation with *L. reuteri* and/or ω -3 fatty acids**

165 Comparisons of demographic variables revealed no differences between the treatment
166 groups, except for a higher proportion of females in the ω -3 single active treatment (P ω)
167 group (Table 1). This lead us to exclude the sex chromosomes from further analyses, as
168 retaining them might affect downstream results. Thereafter, we pursued multidimensional
169 scaling (MDS) analyses to investigate inherent differences between the three active
170 treatment groups, the double *L. reuteri* and ω -3-treated group (L ω), the *L. reuteri* single-
171 treated group (LP) and the ω -3 single-treated group (P ω), compared to the double placebo
172 group (PP). These analyses revealed distinct differences between the treated and untreated
173 groups (Figure 1A-C), indicating treatment-associated changes at the epigenome level. We
174 then proceeded to analyse differential DNA methylation, using an FDR-adjusted p-value
175 threshold of <0.1 along with a mean methylation difference (MMD) of > 5% to define
176 differentially methylated CpGs (DMCs). The double-treated L ω group demonstrated the
177 highest number of DMCs compared with the single active treatment groups (L ω : 1659, LP:
178 1246 and P ω : 984 CpG sites, respectively, Table 2). A majority of the DMCs were
179 hypermethylated (58-70%, Table 2, Figure 1 D-E, Table S1) in all three comparisons,
180 suggesting that prenatal treatment with probiotics and/or ω -3 fatty acids foremostly leads to
181 transcriptional inhibition. To investigate the biological impact of these findings, the DMCs
182 were mapped to their corresponding differentially methylated genes (DMGs), which
183 thereafter were utilised for pathway enrichment analyses. The double-treated L ω group
184 contained 794 genes compared to 620 and 494 genes in the single-treated LP and P ω
185 groups, respectively (Figure 2, Table S2), and 72 genes were shared for all three

186 comparisons (Figure 2, Table S3). Pathway enrichment analyses of the DMGs in the
 187 respective comparisons revealed 87 pathways for the Lw group, including immune-related
 188 pathways such as PI3K-Akt and MAPK signalling,

189 **Table 1.** Demographic characteristics of children with available cord blood samples from the PROOM-

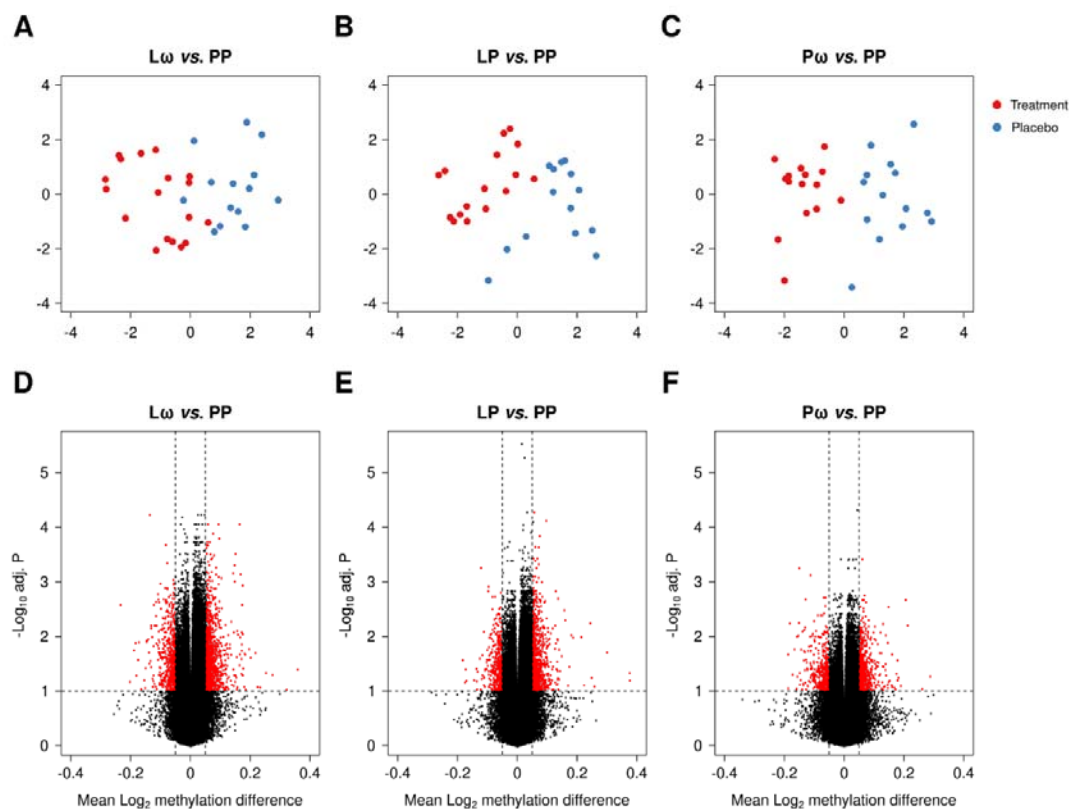
Intervention group	Lw	LP	Pw	PP
<i>Group description and size</i>	<i>L. reuteri</i> + ω-3 PUFA n=18	<i>L. reuteri</i> + Placebo n=16	Placebo + ω-3 PUFA n=15	Placebo + Placebo n=14
<i>Female</i>	6/18 (33%)	7/16 (44%)	12/15 (80%)*	3/14 (21%)
<i>Birth week</i>	39.5 (39.0-41.0)	40.0 (38.8-40.2)	40.0 (40.0-41.0)	40.0 (39.0-41.0)
<i>Treatment duration</i>	19.0 (19.0-21.2)	19.5 (19.0-20.0)	20.0 (19.5-21.0)	20.0 (19.0-20.8)
<i>Maternal age (birth)</i>	31.0 (29.0-32.8)	32.0 (30.0-33.2)	32.0 (29.0-33.0)	30.0 (28.2-32.5)
<i>Caesarean delivery</i>	3/17 (18%)	0/16 (0%)	1/15 (7%)	1/14 (7%)
<i>Birth weight (kg)</i>	3.8 (3.6-3.9)	3.5 (3.3-3.9)	3.9 (3.7-4.1)	3.8 (3.6-4.1)
<i>Birth height (cm)</i>	51.0 (50.0-52.0)	51.5 (49.8-52.2)	51.0 (50.5-52.5)	51.0 (50.0-52.0)
<i>Maternal atopy</i>	14/18 (78%)	11/16 (69%)	7/15 (47%)	8/14 (57%)
<i>Paternal atopy</i>	9/18 (50%)	9/16 (56%)	9/15 (60%)	11/14 (79%)
<i>Siblings</i>	1.0 (0.0-1.0)	1.0 (0.0-1.2)	1.0 (0.0-1.5)	0.0 (0.0-1.0)
<i>People in home</i>	4.0 (3.0-4.0)	4.0 (3.0-5.0)	3.0 (3.0-4.0)	3.5 (3.0-4.0)
<i>Smoking in home</i>	0/18 (0%)	0/16 (0%)	0/12 (0%)	1/14 (7%)
<i>Breastfeeding (at 3 months)</i>	15/18 (83%)	12/16 (75%)	9/12 (75%)	12/14 (86%)
<i>Antibiotics (during first 3 months)</i>	1/15 (7%)	1/14 (7%)	0/10 (0%)	0/11 (0%)
<i>Pets in home (at 3 months)</i>	4/18 (22%)	5/16 (31%)	3/11 (27%)	1/13 (8%)
<i>Naïve CD4+CD45RA+ cells (%)</i>	95.6 (94.6-97.4)	96.6 (95.7-97.1)	95.7 (95.3-97.3)	95.9 (94.5-96.9)
<i>Memory CD4+CD45RA- cells (%)</i>	4.4 (2.6-5.4)	3.4 (2.9-4.3)	4.3 (2.7-4.7)	4.1 (3.1-5.5)

190 3 study.

191

192 Demographic variable information was retrieved from parentally reported questionnaire data at the three month
193 follow-up. Continuous variables are expressed as medians with interquartile ranges and were analysed using the
194 Shapiro-Wilk's test of normality followed by Levene's test of equal variances and the Kruskal-Wallis H test. For
195 the categorical variables, the Pearson χ^2 test was performed and the data is presented as n/N (%). *denotes
196 significantly more females than males in the P ω group, p=0.01. L – *Lactobacillus reuteri*, ω – ω -3 fatty acids, P –
197 placebo.

198 **Figure 1.**



199 **Figure 1.** Graphical representations of multidimensional scaling (MDS) analyses are shown in panels
200 A-C for the double active (L ω) and single active treatment groups (LP, P ω), respectively, in
201 comparison to the double placebo group (PP). Red dots represent the active treatment group, blue
202 dots the placebo group. In panels D-E, volcano plots illustrate the distribution of DMCs when
203 comparing each of the active treatment groups to the double placebo group (PP). DMCs are defined
204 as having an MMD of > 5% along with an FDR-corrected p-value of < 0.1, and are depicted as red

205 dots. DMC – differentially methylated CpG, MDS – multidimensional scaling, MMD – mean methylation
 206 difference, L – *Lactobacillus reuteri*, ω – ω -3 fatty acids, P – placebo.

207

208 Phospholipase D signalling and T cell receptor signalling (Table S4). The LP group revealed
 209 20 pathways, amongst others the Rap 1, Phospholipase D signalling and Th17 differentiation
 210 pathways (Table S5), whereas the P ω group did not reveal any pathways at all.

211 **Table 2.** Results from the differential methylation analyses, comparing the active treatments vs. the
 212 double placebo group.

Intervention group	L ω vs. PP	LP vs. PP	P ω vs. PP
DMCs	1 659	1246	984
Hypomethylated CpGs	576 (35%)	380 (30%)	415 (42%)
Hypermethylated CpGs	1083 (65%)	866 (70%)	569 (58%)
DMGs	794	620	494
Hypomethylated genes	247 (31%)	204 (33%)	184 (37%)
Hypermethylated genes	524 (66%)	405 (65%)	295 (60%)
Mixed methylation genes	23 (3%)	11 (2%)	15 (3%)

213

214 Proportions of hypo- and hypermethylated CpGs and genes, from the differential DNA methylation analyses
 215 comparing the active treatment groups vs. the double placebo group, are presented as n (% of total). DMCs
 216 – differentially methylated CpGs, DMGs – differentially methylated genes, L – *Lactobacillus reuteri*,
 217 ω – ω -3 fatty acids, P – placebo.

218 **Figure 2.**



224

225

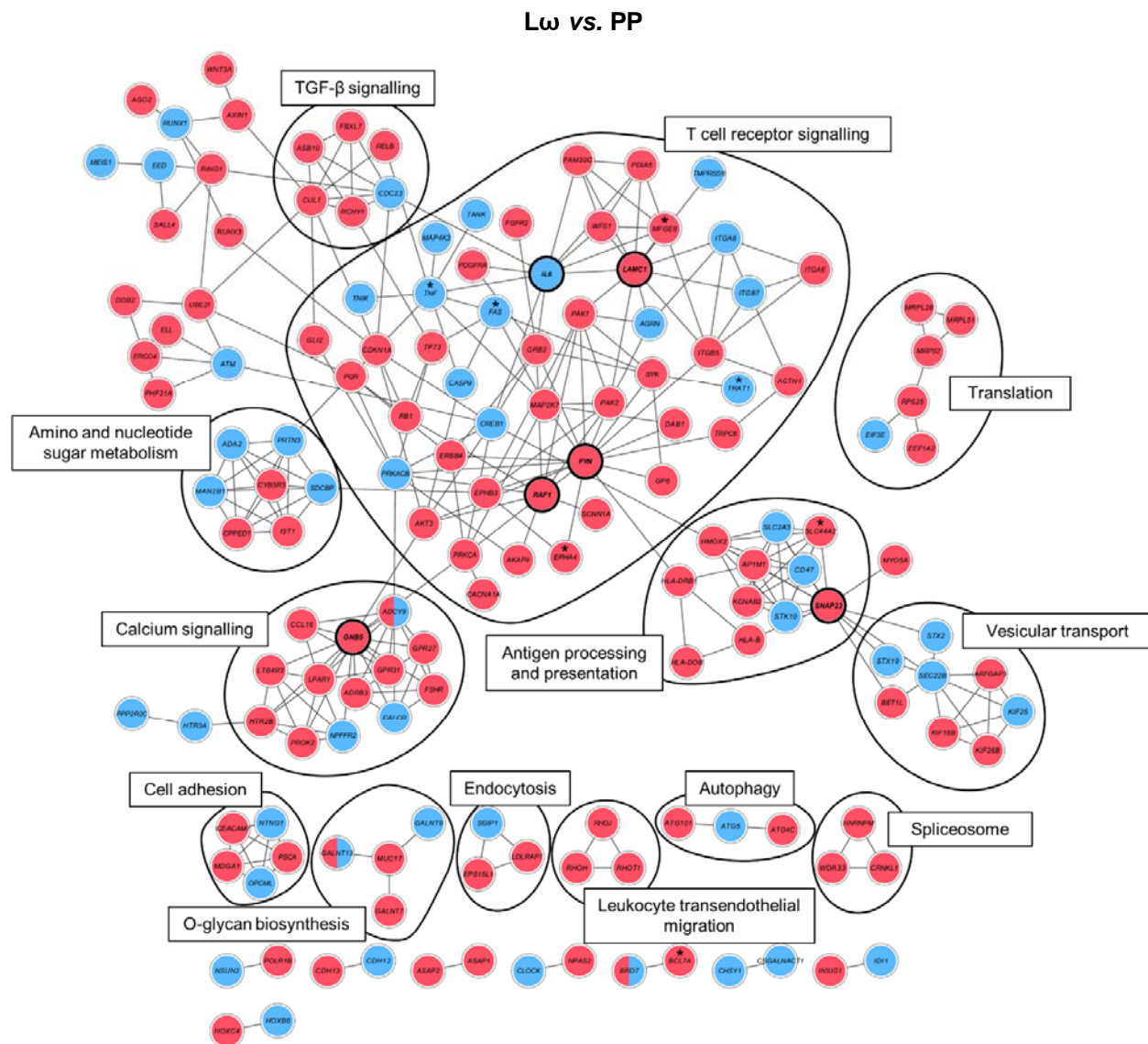
226 **Figure 2.** A graphic representation of overlapping DMGs between the different comparisons. The sets
227 represent the different comparisons, and the intersectional sizes show the number of overlapping
228 genes between the comparisons. Dark blue represents the double-treated group, light blue the *L.*
229 *reuteri* single-treated group and coral blue the ω -3 single-treated group. L – *Lactobacillus reuteri*, ω –
230 ω -3 fatty acids, P – placebo.

231 **Network analyses show immune-related pathways being affected by the interventions**

232 As a means to further elaborate on the wider biological context in which the supplementation-
233 induced DMGs act, the DMGs were mapped onto a protein-protein interaction map
234 (STRING-db) to study putative interactions in a network context. The most interconnected
235 modules were derived from DMGs identified by four module discovery methods from the
236 MODifier⁴⁰ package. This approach narrowed down the number of supplementation-induced
237 DMGs to 170, 100 and 87 genes for the L ω , LP and P ω comparisons, respectively (Tables
238 S6-S8). High-confidence interactions from the respective modules are displayed in Figure 3
239 and Figures S2-3. Of the 170 genes identified in the double-treated L ω module, six genes
240 were considered highly connected (exhibiting 10 or more connections to other module
241 genes), and could be considered important hubs within the network: *FYN*, *GNB5*, *SNAP23*,
242 *LAMC1*, *IL6* and *RAF1* (Figure 3). All genes but *IL6* were hypermethylated. Inspecting the
243 network module for biologically relevant clusters, pathway enrichment analyses of those
244 clusters revealed that supplementation with both *L. reuteri* and ω -3 affects pathways such as
245 T cell receptor signalling, antigen processing and presentation as well as TGF- β signalling
246 (Figure 3, Figure S3), clusters that were also observed in corresponding analyses of the
247 single-treated groups (Figures S1-2, S4-5).

248 To further evaluate common and unique features of the obtained supplementation modules,
249 comparisons were made between the three treatment groups. While 10 genes were shared
250 between all three comparisons, 24, 14 and 10 genes overlapped when comparing the L ω

251 group to the *L. reuteri* single-treated (LP) group, the Lw to the ω -3 single-treated (P ω) group
252 and the single-treated groups (LP vs. P ω) to each other, respectively (Figure 4A, Table S9).
253 Genes common to all treatment groups related to cellular adhesion and extracellular matrix-
254 receptor interaction pathways, whereas the comparisons between the single-treated groups
255 revealed no significant pathways. Compared to the Lw double-treated group, overlaps to the
256 single-active P ω group related to T cell receptor signalling and other related signal
257 transduction pathways, while overlaps to the LP group included Ca²⁺ signalling and O-
258 glycan biosynthesis



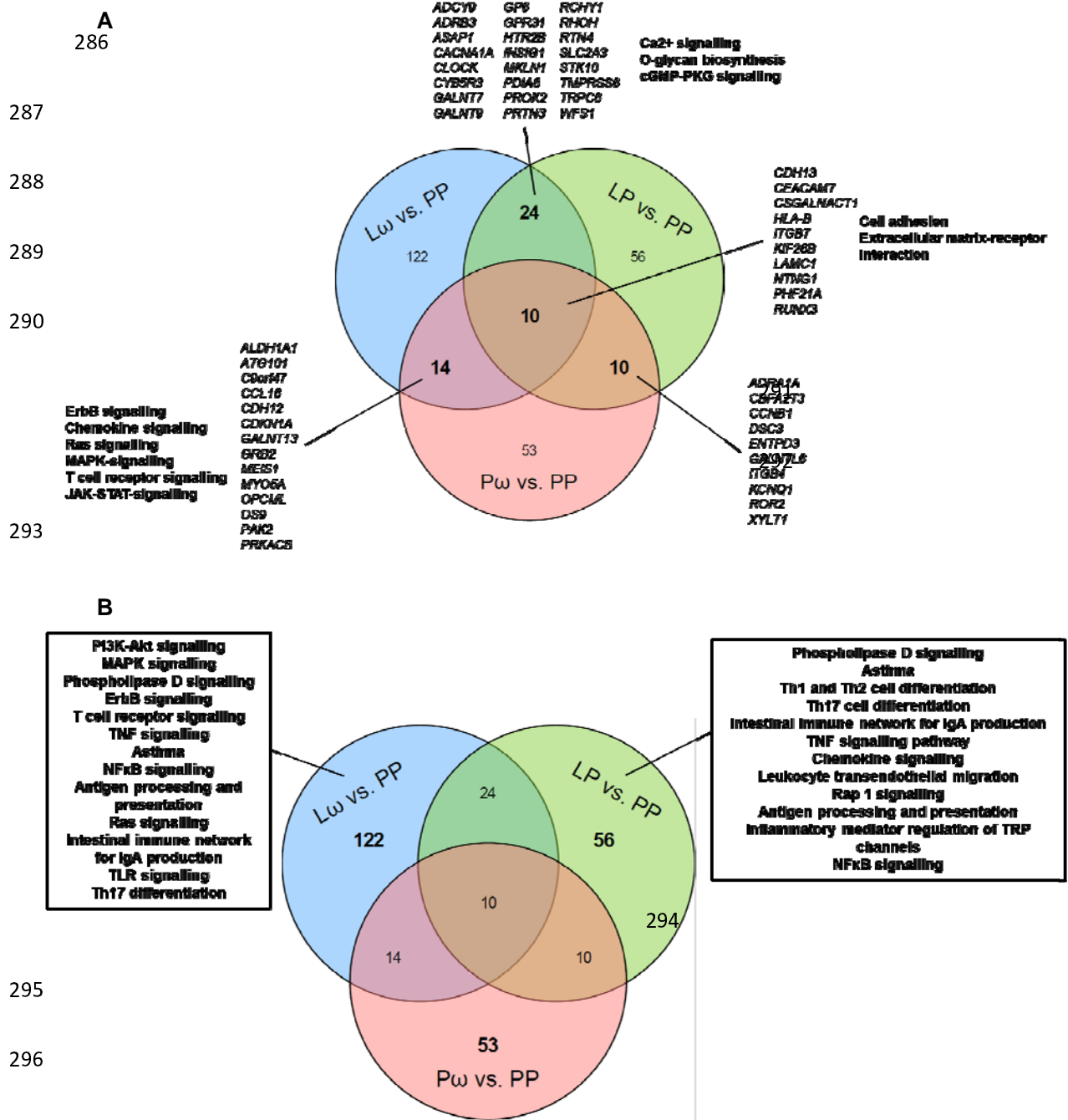
259 **Figure 3.**

260 **Figure 3.** Visualisation of the consensus module created with the DMGs from the differential
261 methylation comparison between the double-treated *L.reuteri*/ ω -3 (L ω) and the double placebo (PP)
262 group. Nodes represent genes and connecting lines represent protein-protein interactions (STRING
263 combined score > 0.7) within the network. Red nodes illustrate hypermethylated genes, blue nodes
264 indicate hypomethylated genes and both colours denote mixed methylation patterns. Black lines
265 enclose biologically relevant clusters identified by bioinformatic pathway enrichment analyses. Nodes
266 marked with * are also present in an independent allergy data set (described later in the paper).
267 DMGs – differentially methylated genes, L – *Lactobacillus reuteri*, ω – ω -3 fatty acids, P – placebo.

268 (Figure 4A), pathways which are relevant for proper T cell function. The largest number of
269 unique genes were revealed for the double active L ω treatment group (122 genes), which
270 were mainly biologically related to T cell receptor signalling and related signal transduction
271 pathways, TNF and NF κ B signalling as well as asthma (Figure 4B). The single-treated
272 groups showed similar numbers of unique genes (LP: 56 genes, P ω : 53 genes), which
273 related to Th1/2/17 helper cell differentiation and asthma amongst other pathways for the LP
274 group, while yet again no relevant pathways were discovered for the P ω treatment group.
275 Hence, combined probiotic and ω -3 supplementation seems to have synergistic effects at the
276 network level compared to the single treatments.

277 Further evaluation of the direction of methylation in the shared genes revealed that treatment
278 with either *L. reuteri* or ω -3 fatty acids led to consistent methylation patterns in most of the
279 genes when compared to the double-treated L ω group (Figure 5A-B, Table S9). This pattern
280 was even more distinct comparing the single active treatment groups, where only one gene
281 revealed different methylation patterns between the groups (Figure 5C). In the comparison
282 between all three treatment groups, however, the patterning of approximately half the genes
283 were similar, whereas the single active groups exhibited different and still distinct shared
284 DNA methylation patterns with the L ω group (Figure 5D).

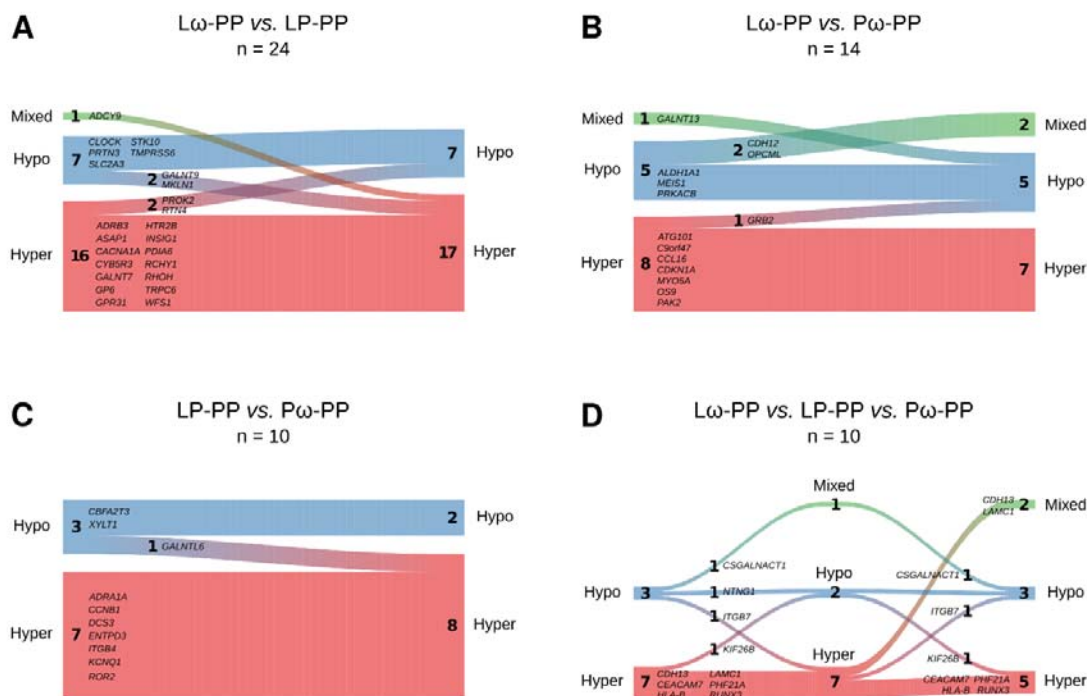
285 **Figure 4.**



299 **Figure 4.** Venn diagrams illustrating the degree of overlap and uniqueness for the obtained genes
 300 from the three network modules for the double active treatment (Lw vs. PP) and the single active
 301 treatment (LP vs. PP, Pw vs. PP) comparisons. In panel A. the number of common genes from the
 302 overlap are displayed for each comparison is shown, with corresponding gene names denoted in

303 italics, and selection of related pathways in bold. No relevant pathways were revealed for the shared
 304 genes of the LP vs. PP and P ω vs. PP comparisons. In panel B. the number of genes that are unique
 305 for each comparison are displayed along with a selection of corresponding related pathways. No
 306 pathways of relevance were revealed for the unique genes from the P ω vs. PP comparison. L –
 307 *Lactobacillus reuteri*, ω – ω -3 fatty acids, P – placebo.

308 **Figure 5.**



309 **Figure 5.** River plots illustrating the methylation status for overlapping genes being shared between
 310 the double-treated Lw group and A. the single-treated probiotic (LP vs. PP), and B. ω -3 treated (P ω
 311 vs. PP) group. Panel C. illustrates comparisons between the single treated groups (LP and P ω vs. PP)
 312 and D. shows the comparison between all treatment groups. Genes are represented as flows of size
 313 proportional to number of genes within their methylation status in a particular set, and differences
 314 between sets are shown as connections between flows. The respective gene names are denoted next
 315 to each flow. Red represents hypermethylation, blue hypomethylation and green a mixed methylation
 316 pattern. The number of genes in the respective flows are denoted in the graph. L – *Lactobacillus*
 317 *reuteri*, ω – ω -3 fatty acids, P – placebo.

318 **Differentially methylated CpGs in the active treatment groups were enriched in an**
319 **independent allergic disease data set**

320 As no information is as yet available on allergy development for the children included in this
321 study, we pursued enrichment analyses on DMCs extracted from the differential DNA
322 methylation analyses for all three comparisons, and compared them to DMCs of a publicly
323 available allergy data set, studying DNA methylation patterns in CD4+ T cells of adults with
324 seasonal allergic rhinitis (8 patients vs. 8 controls). Indeed, for all three comparisons, a
325 substantial number of DMCs were significantly enriched within the allergy data set (L ω : 91,
326 $p=4.7e^{-28}$, LP: 47, $p=2.6e^{-11}$ and P ω : 56 CpGs, $p=1.9e^{-17}$, Figure 6A). Investigating involved
327 pathways of the genes from these DM.Ce-s, few or no pathways emerged (results not
328 shown). Three CpG sites overlapped between the three groups (in the genes *MYOF*,
329 *C6orf123* and *PTPRN2*), while additionally 8 and 11 CpGs were common comparing the the
330 double-treated L ω group to the single-treated LP and P ω groups, respectively, and 4 CpGs
331 were overlapping between the single-treated groups (Table S10).

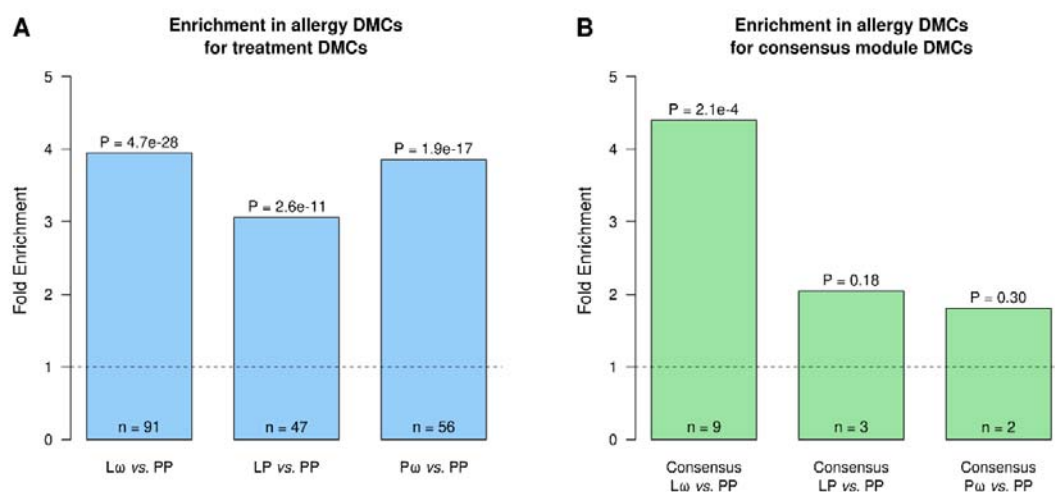
332 As some results from the network analyses indicated involvement of network genes in
333 allergy-related pathways, we additionally pursued comparisons of our DMCs from the
334 consensus modules for all three comparisons to the above mentioned allergy data set.
335 Enrichment analyses revealed that there was a significant overlap between our DMCs
336 identified by the double-treated L ω network module and allergic disease (9 genes,
337 $p=0.00021$, Figure 6B), while no significant enrichments were revealed for the single-treated
338 groups. Examining these nine genes within the L ω module in more detail, four were
339 hypomethylated (*TNF*, *FAS*, *TRAT1* and *HIVEP3*), while five were hypermethylated
340 (*SLC44A2*, *MFGE8*, *EPHA4*, *BCL7A* and *RAB11FIP1*), and seven of these genes were
341 present within the connected components of the network (all but *HIVEP3* and *RAB11FIP1*,
342 Figure 3, genes marked with asterisks). Six out of seven genes were furthermore located to
343 the central parts of the network, mainly involved in T cell receptor signalling and antigen
344 processing and presentation. Comparing the direction of methylation to the independent

345 allergy data set, four genes exhibited the opposite direction of patterning (*HIVEP3*, *TRAT1*,
346 *BCL7A* and *SLC442A*), while the DNA methylation patterning of the remaining genes were
347 identical between the groups (Figure S6).

348

349

350 **Figure 6.**



351

352 **Figure 6.** Enrichment analyses relating DMCs from A. differential DNA methylation analyses and B.
353 network analyses for all three comparisons, to DMCs from a study investigating DNA methylation
354 patterns in adults with seasonal allergic rhinitis. Panel A. shows treatment DMC overlaps with allergy
355 DMCs. Panel B. shows consensus module gene associated DMC overlaps with allergy DMCs. The
356 number of overlapping DMCs is shown at the bottom of the bars (n). A one-sided Fisher's exact test
357 was used for the enrichment analyses. Computed P-values represent the enrichment significance,
358 while the fold enrichment illustrates how over-represented the overlap is, compared to what would be
359 expected by chance for the given background.

360

361

362

363

364

365

366

367

368 **DISCUSSION**

369 The role of perinatal combined allergy prevention interventions on epigenetic patterning in T
370 helper cells has hitherto been unknown. In this paper, we set out to assess the epigenome-
371 wide effects on cord blood CD4+ cells of combined maternal probiotic and ω -3 intervention
372 during the latter half of pregnancy. Indeed, we show that prenatal supplementation affects
373 the epigenome of T cells from cord blood in the neonates substantially, and differently so
374 depending on the treatment combination.

375 The main finding of this study was that the largest treatment-induced effect on the
376 epigenome was revealed in the Lw double active treatment group, and that regardless of
377 treatment hypermethylation was the main outcome. The network analyses revealed the same
378 pattern in the created intervention modules, and the genes shared between the comparisons
379 as well as the performed network analyses revealed common biological pathways. The Lw
380 module made up the highest number of genes while fewer, but still significant, numbers were
381 revealed in the single-treated LP and P ω modules. This indicates that there might be some
382 synergistic effects of the double treatment. Although the number of shared genes from the
383 networks were limited and the methylation patterns of the genes were only partly similar, this
384 further suggests that the combined treatment may modulate the epigenetic response
385 differently from the single treatment groups. Probiotics may affect DNA methylation either by
386 the production of metabolites downstream of short chain fatty acids, which are indispensable
387 co-factors for proper functioning of enzymes such as DNA methyltransferases, or directly by
388 modifying the actions of the same enzymes.⁴¹ Similarly, ω -3 fatty acid intervention may alter

389 DNA methyltransferase activity⁴² and regulation of transcription factor activity.⁴³ However,
390 how the combination of the two treatments act on a molecular level still needs further
391 elaboration. Examining the genes that were unique to the respective comparisons, the Lw
392 and LP groups featured large numbers of immune-related pathways, yet again involving
393 signal transduction pathways important for T cell signalling, but also T helper cell
394 differentiation and asthma. This is particularly interesting, and future studies on these
395 children will have to settle whether induced DNA methylation differences are associated with
396 the development of allergic disease. Altogether, our findings propose that the interventions
397 modulate the epigenome, and more specifically so in pathways that are of general
398 importance for proper T cell development and function.

399 To further understand the impact of the prenatal intervention on the epigenome, genes that
400 were highly connected within the module network were scrutinised in detail. In the double-
401 treated Lw group, six genes had more than 10 connections to other genes within the
402 network. One of the genes was *FYN*, a non-receptor tyrosine-protein kinase involved in the
403 downstream signal transduction pathway of the T cell receptor, regulating amongst other
404 things T cell activation and differentiation.⁴⁴ In this study, *FYN* was hypermethylated,
405 suggesting that the gene would be transcriptionally silenced by treatment and thereby also
406 downregulating putative protein functions. Another gene of interest was the hypomethylated
407 inflammatory cytokine gene *IL6*. IL-6 is heavily involved in the development and maintenance
408 of inflammation, by inducing both innate and adaptive inflammatory immune responses.⁴⁵ In
409 modulation of the latter, IL-6 regulates both proliferation and cytokine responses of CD4+
410 cells by inducing JAK/STAT, MAPK and PI3K-Akt signalling pathways, and downstream
411 effects of this activation have been implicated in development of asthma. On an epigenomic
412 level, hypomethylation of IL-6 has been shown in children with peanut allergy⁴⁶, and it has
413 also been associated to worse lung function in asthmatic children.⁴⁷ Furthermore, in the first
414 6-12 months of life, the *IL6R* gene was hypomethylated in a pre-and postnatal probiotic
415 intervention study investigating development of obesity in children.³⁸ As we are still collecting

416 information about development of allergic disease such as asthma in the present PROOM-3
417 study, the long term implications of this finding are unknown. It is possible, however, that the
418 intervention enables transcriptional accessibility of this gene, and hence equips the child with
419 early inflammatory capacity. This notions is in line with the observed overlap of DMCs from
420 the Lw consensus module with the publicly available allergy data set. Three hypomethylated
421 genes from the T cell receptor signalling cluster were of particular interest: *TNF*, *FAS* and
422 *TRAT1*. The T cell receptor-associated transmembrane adaptor protein TRAT1 is known to
423 stabilise the T cell receptor/CD3 complex, and may thereby modulate downstream signal
424 transduction and promote T cell function.^{48,49} TRAT1 was hypomethylated in the Lw group,
425 whereas it was hypermethylated in the independent allergy data set, indicating that the
426 combined intervention may enable proper T cell signalling propagation into the cell. While the
427 cytokine tumor necrosis factor (TNF) may not only promote inflammatory responses and
428 induce proliferation of both naïve and memory T cells, it may also drive apoptosis of effector
429 T cells.⁵⁰ Similarly, the TNF-related FAS receptor may also induce apoptosis of cells by
430 binding to FASL, leading to recruitment of caspase-8 and -10 and subsequent
431 commencement of programmed cell death.⁵¹ This process is of crucial importance in the
432 establishment of peripheral tolerance, and as TNF and FAS were hypomethylated in the Lw
433 comparison, this suggests that anti-inflammatory effects of TNF and FAS could be promoted
434 by the supplementation of probiotics and ω -3 prenatally. However, further studies on
435 transcriptional and protein levels of these mediators, along with functional studies in relation
436 to allergy development should shed light on the relevance of these findings upon prenatal
437 interventions.

438 One quite surprising finding of this study was that, in contrast to our hypothesis and results
439 from our previous epigenome-wide study on the effects of perinatal *L. reuteri* treatment on
440 cord blood CD4+ cells³⁹, a larger proportion of the CpG sites were hypermethylated when
441 comparing either of the intervention groups to the double placebo group. This finding could
442 have several explanations. First of all, unlike our previous studies investigating possible

443 allergy preventive effects of perinatal probiotic intervention³⁹ or ω -3 intervention^{16,17} the
444 combined intervention was initiated already at gestational (GW) 20 in the PROOM-3 study,
445 compared to GW 25 for ω -3 fatty acid¹⁶ and GW 36 for *L. reuteri*⁵² supplementation in the
446 previous study. Additionally, the maternal dosage of the *L. reuteri* strain was also higher by
447 an order of magnitude in this study (10^9 colony forming units (CFU), compared to 10^8 CFU
448 previously⁵²), possibly allowing for potentiated effects of the probiotic intervention.
449 Furthermore, we here utilised Illumina's Infinium MethylationEPIC 850K array, surveying
450 more than 866 000 sites all over the genome. Despite including more than 90% of the
451 investigated sites from the previous Illumina 450K platform⁵³, almost twice the amount of
452 DNA methylation probes were investigated. This could possibly explain why the present
453 findings differ from the previous study where the Illumina 450K platform was used. Also, as
454 only autosomal chromosomes were retained the present analyses, this may have affected
455 the outcomes in relation to our previous study³⁹, where all chromosomes were included in the
456 analyses. Altogether, these modifications to the study, experimental and statistical protocol
457 could possibly explain the apparent reversed observations in terms of major
458 hypermethylation upon intervention with *L. reuteri* and/or ω -3 fatty acids in this study, in
459 contrast to hypomethylation upon *L. reuteri* intervention previously.³⁹

460 Advantages of the present study include the performance of the DNA methylation analyses in
461 purified CD4+ T cells, cells which are instrumental for development of specific long-term
462 immune responses in general, but also for the development of allergic diseases in particular.²
463 Also, despite our relatively small sample numbers, we are able to evaluate all four
464 intervention groups in this study, enabling us to shed light on treatment-specific effects on
465 the methylome. The performance of network analyses provides another benefit of this study,
466 where the analyses have generated putative candidate genes to study further in an allergy
467 development and prevention context. As the study is still on-going, we were not able to
468 perform any comparisons of the interventions and their respective DNA methylation patterns
469 on outcomes of allergy development. However, we made up for this drawback by comparing

470 our findings to an independent allergy study, where we indeed could show enrichment of our
471 DMCs. Another limitation in our analyses include the lack of validation at the mRNA or
472 protein expression level.

473 In conclusion, we demonstrate that the combined prenatal treatment with *L. reuteri* and/or ω -
474 3 fatty acids results in general differential hypermethylation in neonatal CD4+ T cells, which
475 affects both T cell-specific and immune-related pathways. This was corroborated by network
476 analyses that condensed the findings to differentially methylated genes in linked pathways,
477 which also showed relevance in an independent cohort of allergic disease. Future follow-ups
478 on allergic disease and studies on transcriptional activity will confirm the long-term relevance
479 of the presented findings, which may have an impact on future development of allergy
480 prevention regimens.

481

482

483

484

485

486

487

488

489

490

491

492

493

494

495

496

497

498

499

500 **METHODS**

501 **Study participants**

502 In this study, cord blood samples collected at the time of birth were included for 63 children
503 from the on-going randomised double blind placebo-controlled trial PROOM-3
504 (ClinicalTrials.gov-ID: NCT01542970), in which the allergy preventive effects of combined
505 pre- and postnatal *Lactobacillus reuteri* and ω -3 fatty acid supplementation are investigated.
506 The study is four-armed comprising the following groups; double active treatment (L ω , *L.*
507 *reuteri* and ω -3 fatty acids), single active treatments (placebo for either treatment, active
508 treatment for either *L. reuteri* (LP) or ω -3 (P ω)) and double placebo treatment (PP). In the
509 present study, the following numbers of samples were available per group: L ω = 18, LP = 16,
510 P ω = 15, PP = 14. The mothers are supplemented with the probiotic intervention or the
511 corresponding placebo supplement from GW 20 until delivery, whereas the children receive
512 the same treatment throughout the first year of life. The active probiotic substance consists of
513 *L. reuteri* (BioGaia[®], Stockholm, Sweden) suspended in sun flower and palm kernel oil, which
514 is given as droplets twice daily to the mothers (10⁹ CFU) and once daily to the children (10⁸
515 CFU). Placebo treatment for the probiotic intervention consists of the same oil mixture as
516 above without probiotics. The ω -3 fatty acid intervention or corresponding placebo
517 supplement are given from GW 20 throughout lactation to the mothers. Twice daily, the

518 mothers ingest either three capsules of Pikasol[®] (Orkla Health, Lund, Sweden, 1 g capsules
519 containing 640 mg ω -3 PUFA, 35% EPA, 25% DHA) or the placebo supplement olive oil. The
520 children are followed-up at several occasions using questionnaires and by performance of
521 clinical examinations. As the study still is ongoing, only parent reported questionnaire data
522 from the 3-month follow-up were included for the purpose of this study. Parents or legal
523 guardians provided informed consent on behalf of the children prior to inclusion in the study.
524 Ethical permission for this study has been granted by the Regional Ethics Committee for
525 Human Research in Linköping (Dnr 2011/45-31).

526

527 **Cord blood mononuclear cell and CD4+ magnetic bead isolation**

528 The isolation of cord blood mononuclear cells (CBMCs) from cord blood and the following
529 magnetic bead isolation of CD4+ T cells from the CBMCs have been described in detail
530 elsewhere.³⁹

531

532 **Flow cytometry measurements of naïve and memory T cell proportions**

533 In order to determine the proportion of naïve and memory cells from the isolated CD4+ cells
534 0.2×10^6 cells were stained for flow cytometry. Firstly, in order to determine the amount of
535 live and dead cells in each sample Aqua LIVE/DEAD[™] Fixable Dead Cell Stain (Invitrogen,
536 Eugene, OR, USA) reconstituted reagent (according to manufacturer's protocol) was diluted
537 1:500 in PBS (Medicago AB, Uppsala, Sweden) + 0.1% FCS (Sigma-Aldrich, Ayrshire,
538 United Kingdom) and added to the samples for 15 minutes at RT. Thereafter, the cells were
539 further stained with CD4 PerCP (SK3) and CD45RA FITC (L48), with a complementary
540 isotype tube including CD4 PerCP and Mouse γ 1 FITC (X40) (all antibodies: Becton-
541 Dickinson, San José, CA, USA) for 15 min at 4°C. After washing the cells, they were
542 resuspended as described previously³⁹ and 10 000 events were collected on a FACS Canto
543 II instrument using the FACS Diva software (version 8.0.1). The flow cytometry data were

544 analysed using Kaluza (version 2.1, Beckman Coulter, Indianapolis, IN, USA), and the
545 utilised gating strategy is presented in Figure S7.

546 **DNA extraction**

547 From the remaining CD4+ cells, DNA was extracted using Allprep RNA/DNA Mini Kit
548 (Qiagen, Austin, TX, USA) according to the manufacturer's instructions. DNA concentrations
549 were measured using Qubit dsDNA BR Assay Kit (Thermo Fischer Scientific, Waltham, MA,
550 USA) according to the manufacturer's instructions on a Qubit 3.0 fluorometer device (Thermo
551 Fischer Scientific, Waltham, MA, USA). DNA samples were sent to the SNP&SEQ-
552 technology platform at SciLifeLab (Uppsala University, Uppsala, Sweden) for the
553 performance of Illumina's Infinium Human MethylationEPIC 850K bead chip array preceded
554 by bisulphite conversion on site. The amount of DNA for each sample ranged from 1000-
555 1800 ng.

556

557 **Statistics**

558 As the study is still on-going, the study has not yet been unblinded. An independent
559 statistician has provided the code key only to collaborators that have not been involved in
560 sample collection or laboratory experiments, as not to bias the investigators in interpretation
561 of the data.

562 Descriptive analyses of demographic variables were performed. Continuous variables were
563 tested for normality using the Shapiro-Wilk test of normality followed by Levene's test of
564 equal variances. Thereafter the Kruskal-Wallis H test was performed to study differences in
565 proportions between the groups. For the categorical variables, the Pearson χ^2 test was
566 performed.

567

568 **DNA methylation analyses**

569 The generated raw data from the Illumina 850K MethylationEPIC arrays were processed in
570 GenomeStudio (version 2011.1, Illumina Inc.) by the SNP&SEQ-technology platform, to
571 render IDAT-files manageable for downstream analyses in the R programming environment
572 (version 3.6.3).

573

574 **Pre-processing and quality control**

575 The raw DNA methylation data were pre-processed using the ChAMP⁵⁴ package (version
576 2.16.1) for the R programming environment. Probes with detection p-values above 0.01 and
577 multi-hit probes were filtered out, as were non-CpG probes and probes related to SNPs and
578 NA-probes. Furthermore, as we found significantly more females in the single active ω -3
579 treated ($P\omega$) group, and as X-inactivation in females skews the beta value distribution (Figure
580 S8), probes located on the X and Y chromosomes were omitted from the data. After the
581 filtration step, 738 451 CpGs of the initial 865 918 investigated CpGs in the Illumina
582 MethylationEPIC 850K array remained. Thereafter, beta values were calculated for all
583 probes, representing the mean methylation of each CpG site, and to adjust for the inherently
584 different designs of the Illumina DNA methylation arrays, normalisation of the beta values
585 was conducted using the beta mixture quantile (BMIQ) method.⁵⁵ In order to identify the most
586 significant components of variation in the data, and correct for unwanted variation if found,
587 singular value decomposition (SVD) analyses were performed on the filtered and normalised
588 data, using the ChAMP package. Based on results from these analyses, corrections were
589 made in the data for the technical factors array and slide (Figure S9). The quality of the data
590 was examined prior to and after the normalisation step (Figure S10). To ascertain possible
591 differences in cellular content of the included samples, several methods were used to
592 validate the findings. Maternal contamination of the cord blood samples was examined on
593 the unfiltered data using the method proposed by Morin *et al.*⁵⁶ By surveying threshold DNA
594 methylation levels of 10 specified CpG sites, samples with values above the threshold values
595 at five or more sites indicate contamination and should be excluded. Six samples had a beta

596 value above the threshold value at one CpG site and one sample had beta values above the
597 threshold values at two CpG sites (data not shown), indicating no maternal contamination
598 and hence all 63 samples were retained in further downstream analyses. The cell type
599 composition of the samples was evaluated on filtered and normalised samples using the
600 Houseman method.⁵⁷ The majority of cells were CD4+ cells with median proportions in the
601 intervention groups between 94-96% (Table S11), indicating high sample purity and
602 successful isolation of CD4+ T cells. Multidimensional scaling (MDS) analyses were
603 performed on the filtered, normalised and batch corrected data to study inherent differences
604 in the data, using the R package minfi (version 1.32.0). Results of the SVD analyses using
605 the ChAMP package showed that, apart from the sample array and slide, sex was a major
606 source of unwanted variation in the normalised data. Therefore, sex was added as a co-
607 variate in the batch correction step for the data used in the MDS analyses, using the ComBat
608 function⁵⁸ from the sva package⁵⁹ (version 3.34.0), implemented in ChAMP. Following the
609 statistical analyses, the MDS results were graphically represented by assigning the samples
610 to their respective intervention group belonging.

611

612 **Differential DNA methylation analysis**

613 Using the limma package (version 3.42.2), differentially methylated probes were identified by
614 fitting the DNA methylation data to a linear model. As the proportion of males and females in
615 the samples of at least one of the groups was skewed, sex was included as a co-variate in
616 the model, as was the proportion of memory CD4+ T cells in order to account for possible
617 differences in T cell subtypes. Moderated t-statistics, log₂ Fold Change (logFC) and p-values
618 were computed for each investigated probe. The logFC values represents the average beta
619 methylation difference (from hereon referred to as mean methylation difference, MMD)
620 between the respective active intervention groups in relation to the double placebo (PP)
621 group. P-values were adjusted for multiple testing using the Benjamini-Hochberg procedure
622 for False Discovery Rate (FDR) correction. Differentially methylated CpGs (DMCs) were

623 defined as probes having an FDR-adjusted p-value of less than 0.1 along with an MMD of >
624 5%. Volcano plots were constructed to graphically illustrate the distribution of the DMCs
625 using the base R environment. Identification of genes of interest was conducted by mapping
626 the DMCs to the genome, resulting in differentially methylated genes (DMG). The DMGs
627 were defined as genes containing at least one DMC, where hypomethylation was defined as
628 all DMCs being hypomethylated and vice versa for the hypermethylated DMGs. Genes
629 containing both hypo- and hypermethylated sites were considered having a mixed
630 methylation pattern. A total of three differential methylation comparisons were made between
631 each of the treatment groups compared to the double placebo group. The quality of these
632 comparisons was ascertained using several approaches. First of all, the genomic inflation
633 rate was investigated for the t-statistics of each of the three comparisons described above,
634 as the large number of statistical comparisons made within each analysis may render a
635 considerable number of false positive results. The genomic inflation and pertaining bias were
636 estimated and QQ-plots plotting the differential DNA methylation data against a normal
637 distribution were constructed using the R package BACON⁶⁰(version 1.14.0). The estimated
638 inflation values for each of the three comparisons was very close to one in all cases,
639 indicating that there was no substantial genomic inflation in the comparisons (Figure S11),
640 and hence no correction was needed. Pathway enrichment analyses were performed on the
641 identified DMCs from the differential DNA methylation analyses, using the clusterProfiler
642 package (version 3.14.3) and the KEGG PATHWAY database (release 94 2020/04). An
643 adjusted p-value cut-off of 0.1 was chosen to narrow down the number of pathways.

644

645 **Network analyses**

646 To further study the biological relevance of the findings from the differential methylation
647 analyses, the DMCs identified in the different comparisons described above were annotated
648 to their corresponding gene symbols (DMGs) with the Illumina 850K platform annotation
649 reference. A total of 93 deprecated unique gene terms from the platform reference were

650 corrected to the most updated nomenclature using the org.Hs.eg.db R package (version
651 3.10.0). Thereafter, the DMGs were used as seeds to construct the inputs for the disease
652 module identification pipeline with MODifieR⁴⁰ R package (version 0.1.3, available at
653 <https://gitlab.com/Gustafsson-lab/MODifieR>). Four different module defining algorithms from
654 the package were implemented (Clique SuM, DIAMOnD, MCODE and Module Discoverer),
655 and default parameters for the methods were used in each case. High confidence human
656 protein-protein interactions (PPI) were retrieved from the STRING database (version 11.0,
657 confidence score > 0.7). The four MODifieR methods were run for each comparison,
658 resulting in a set of gene lists corresponding to the identified modules. Non-biased
659 consensus modules were created for each comparison, by extracting genes found by all four
660 module inference methods. Network visualisation was conducted in Cytoscape (version
661 3.7.2). Pathway enrichment analyses were performed on the module specific genes as
662 described above to elucidate the role of the different intervention combinations on the CD4+
663 T cells. Furthermore, to unravel subclusters within the modules, visual inspection of the
664 networks along with pathway enrichment analyses in the clusterProfiler R package (version
665 3.14.3, KEGG database) were performed. Clusters with three or more nodes were included
666 in these analyses. Pathway enrichment analyses were also performed for unique and shared
667 genes within the networks. To illustrate overlaps between shared and unique genes in the
668 comparisons, Venn diagrams were constructed using the VennDiagram R package (version
669 1.6.20). Furthermore, to illustrate how the common genes may differ in methylation status
670 between the comparisons, river plots were constructed using the riverplot R package
671 (version 0.6).

672

673 **Comparisons of differential methylation and network results to publicly available** 674 **allergy data set**

675 As we were interested in the relevance of our findings to allergic disease, but do not yet have
676 any data available on this from the children of the PROOM-3 study, we compared the

677 findings of our study with publicly available data on allergic disease. The chosen data set
678 was downloaded from Gene Expression Omnibus
679 (<https://www.ncbi.nlm.nih.gov/geo/query/acc.cgi?acc=GSE50222>) and consisted of Illumina
680 450K data from CD4+ T cells from 8 adult patients vs. 8 controls with seasonal allergic
681 rhinitis with samples from both within and out of season (in total 32 samples).⁶¹ The data
682 were pre-processed by removing probes located on the sex chromosomes, and filtering was
683 performed by removing probes having more than 20% NAs and imputing remaining NAs
684 within retained probes using the KNN method (ChAMP, version 2.12.1). Thereafter, the data
685 were normalised using the BMIQ method and SVD analyses followed (Figure S12) as
686 described earlier, showing that no correction was needed. Subsequent differential DNA
687 methylation analyses were performed using the limma package (version 3.42.2), and sex as
688 well as season of sample taking (within or outside of pollen season) were added as co-
689 variates in the linear models. Upon this, a total of 13102 DMCs were found for the data set,
690 which were then compared to DMCs from our differential DNA methylation analyses and
691 DMCs extracted from the genes identified in the respective network modules. Enrichment of
692 any DMCs in these comparisons was performed using the enrichment function from the R
693 package bc3net (version 1.0.4), based on a one-sided Fisher's exact test. As the data set
694 originated from 450K data, the intersection of all 450K probes and all MethylationEPIC 850K
695 probes excluding the sex chromosomes was used as background for the analysis, and only
696 DMCs that were present in the background were included. Corresponding pathway
697 enrichment analyses for genes overlapping between any of the differentially methylated
698 DMCs or consensus module originating DMCs with the allergy data set were performed as
699 described above.

700

701

702

703

704

705

706

707

708

709

710

711

712

713 **ABBREVIATIONS**

714 BMIQ – beta mixture quantile

715 CBMC – cord blood mononuclear cell

716 CFU – colony forming unit

717 CpG – Cytosine-phosphate-Guanine

718 DMC – differentially methylated CpG

719 DMG – differentially methylated gene

720 FDR – false discovery rate

721 GW – gestational week

722 *L. reuteri* – *Lactobacillus reuteri*

723 LP – single-treated *L.reuteri* + placebo group

- 724 L ω – double-treated *L.reuteri* + ω -3 group
- 725 MDS – multidimensional scaling
- 726 MMD – mean methylation difference
- 727 PBMC – peripheral blood mononuclear cell
- 728 PP – double placebo group
- 729 PROOM-3 – PRObiotics and OMega-3 study
- 730 P ω – single-treated ω -3 + placebo group
- 731 SVD – singular value decomposition
- 732 ω -3 – omega-3 fatty acids
- 733

734 REFERENCES

- 735 1. Blaser MJ. The theory of disappearing microbiota and the epidemics of chronic diseases.
736 *Nature Reviews Immunology*. 2017;17:461-463.
- 737 2. Lambrecht BN, Hammad H. The immunology of the allergy epidemic and the hygiene
738 hypothesis. *Nature immunology*. 2017;18:1076-1083.
- 739 3. Simon KA, Hollander GA, McMichael A. Evolution of the immune system in humans from
740 infancy to old age. *Proceedings Biological sciences / The Royal Society*. 2015;282:20143085.
- 741 4. Gollwitzer ES, Marsland BJ. Impact of Early-Life Exposures on Immune Maturation and
742 Susceptibility to Disease. *Trends in immunology*. 2015;36:684-696.
- 743 5. Jenmalm MC. The mother-offspring dyad: microbial transmission, immune interactions and
744 allergy development. *Journal of internal medicine*. 2017;282:484-495.
- 745 6. Macpherson AJ, de Agüero MG, Ganal-Vonarburg SC. How nutrition and the maternal
746 microbiota shape the neonatal immune system. *Nature reviews Immunology*. 2017;17:508-
747 517.
- 748 7. Julia V, Macia L, Dombrowicz D. The impact of diet on asthma and allergic diseases. *Nature*
749 *Reviews Immunology*. 2015;15:308-322.
- 750 8. Dzidic M, Boix-Amorós A, Selma-Royo M, Mira A, Collado M. Gut Microbiota and Mucosal
751 Immunity in the Neonate. *Medical sciences (Basel, Switzerland)*. 2018;6:56.
- 752 9. Renz H, Skevaki C. Early life microbial exposures and allergy risks: opportunities for
753 prevention. *Nature Reviews Immunology*. 2020:1-15.
- 754 10. Miles EA, Calder PC. Can Early Omega-3 Fatty Acid Exposure Reduce Risk of Childhood
755 Allergic Disease? *Nutrients*. 2017;9:784.
- 756 11. Blasbalg TL, Hibbeln JR, Ramsden CE, Majchrzak SF, Rawlings RR. Changes in
757 consumption of omega-3 and omega-6 fatty acids in the United States during the 20th century.
758 *The American Journal of Clinical Nutrition*. 2011;93:950-962.
- 759 12. Warstedt K, Duchén K. Increased linoleic acid/ α -linolenic acid ratio in Swedish cord blood
760 samples collected between 1985 and 2005. *European journal of nutrition*. 2012;52:659-665.
- 761 13. Miyata J, Arita M. Role of omega-3 fatty acids and their metabolites in asthma and allergic
762 diseases. *Allergology international : official journal of the Japanese Society of Allergology*.
763 2015;64:27-34.
- 764 14. Krauss-Etschmann S, Hartl D, Rzehak P, *et al*. Decreased cord blood IL-4, IL-13, and CCR4
765 and increased TGF- β levels after fish oil supplementation of pregnant women. *Journal of*
766 *Allergy and Clinical Immunology*. 2008;121:464-470000000.
- 767 15. Bisgaard H, Stokholm J, Chawes BL, *et al*. Fish Oil-Derived Fatty Acids in Pregnancy and
768 Wheeze and Asthma in Offspring. *The New England journal of medicine*. 2016;375:2530-
769 2539.
- 770 16. Furuholm C, Warstedt K, Larsson J, *et al*. Fish oil supplementation in pregnancy and lactation
771 may decrease the risk of infant allergy. *Acta Paediatrica*. 2009;98:1461-1467.
- 772 17. Furuholm C, Warstedt K, Fagerås M, *et al*. Allergic disease in infants up to 2 years of age in
773 relation to plasma omega-3 fatty acids and maternal fish oil supplementation in pregnancy and
774 lactation. *Pediatric Allergy and Immunology*. 2011;22:505-514.
- 775 18. Stokholm J, Blaser MJ, Thorsen J, *et al*. Maturation of the gut microbiome and risk of asthma
776 in childhood. *Nature Communications*. 2018;9:141.
- 777 19. Bisgaard H, Li N, Bonnelykke K, *et al*. Reduced diversity of the intestinal microbiota during
778 infancy is associated with increased risk of allergic disease at school age. *Journal of Allergy*
779 *and Clinical Immunology*. 2011;128:646-65200000.
- 780 20. Sjögren YM, Jenmalm MC, Böttcher MF, Björkstén B, Sverremark-Ekström E. Altered early
781 infant gut microbiota in children developing allergy up to 5 years of age. *Clinical and*
782 *experimental allergy : journal of the British Society for Allergy and Clinical Immunology*.
783 2009;39:518-526.
- 784 21. Chiu C-Y, Chan Y-L, Tsai M-H, Wang C-J, Chiang M-H, Chiu C-C. Gut microbial dysbiosis is
785 associated with allergen-specific IgE responses in young children with airway allergies. *The*
786 *World Allergy Organization journal*. 2019;12:100021.
- 787 22. Ling Z, Li Z, Liu X, *et al*. Altered Fecal Microbiota Composition Associated with Food Allergy in
788 Infants. *Applied and Environmental Microbiology*. 2014;80:2546-2554.
- 789 23. Abrahamsson TR, Jakobsson HE, Andersson AF, Björkstén B, Engstrand L, Jenmalm MC.
790 Low diversity of the gut microbiota in infants with atopic eczema. *The Journal of allergy and*
791 *clinical immunology*. 2012;129:434.

- 792 24. Cuello-Garcia CA, Brozek JL, Fiocchi A, *et al.* Probiotics for the prevention of allergy: A
793 systematic review and meta-analysis of randomized controlled trials. *J Allergy Clin*
794 *Immunol.*136.
- 795 25. Wells JM. Immunomodulatory mechanisms of lactobacilli. *Microbial cell factories.* 2011;10
796 Suppl 1.
- 797 26. Abrahamsson TR, Sandberg Abenius M, Forsberg A, Björkstén B, Jenmalm MC. A Th1/Th2-
798 associated chemokine imbalance during infancy in children developing eczema, wheeze and
799 sensitization. *Clinical and experimental allergy : journal of the British Society for Allergy and*
800 *Clinical Immunology.* 2011;41:1729-1739.
- 801 27. Alhamwe B, Alhamdan F, Ruhl A, Potaczek DP, Renz H. The role of epigenetics in allergy and
802 asthma development. *Current Opinion in Allergy and Clinical Immunology.* 2020;20:48-55.
- 803 28. Schmidl C, Delacher M, Huehn J, Feuerer M. Epigenetic mechanisms regulating T-cell
804 responses. *The Journal of allergy and clinical immunology.* 2018;142:728-743.
- 805 29. Zhang H, Kaushal A, Merid S, *et al.* DNA methylation and allergic sensitizations, a genome-
806 scale longitudinal study during adolescence. *Allergy.* 2019;74:1166-1175.
- 807 30. Peng C, Meel ER, Cardenas A, *et al.* Epigenome-wide association study reveals methylation
808 pathways associated with childhood allergic sensitization. *Epigenetics.* 2019.
- 809 31. DeVries A, Wlasiuk G, Miller SJ, *et al.* Epigenome-wide analysis links SMAD3 methylation at
810 birth to asthma in children of asthmatic mothers. *J Allergy Clin Immunol.*
- 811 32. Lund RJ, Osmala M, Malonzo M, *et al.* Atopic asthma after rhinovirus-induced wheezing is
812 associated with DNA methylation change in the SMAD3 gene promoter. *Allergy.*
813 2018;73:1735-1740.
- 814 33. Martino D, Dang T, Sexton-Oates A, *et al.* Blood DNA methylation biomarkers predict clinical
815 reactivity in food-sensitized infants. *J Allergy Clin Immunol.*135.
- 816 34. Martino D, Neeland M, Dang T, *et al.* Epigenetic dysregulation of naive CD4+ T-cell activation
817 genes in childhood food allergy. *Nature Communications.* 2018;9:3308.
- 818 35. Harb H, Irvine J, Amarasekera M, *et al.* The role of PKC ζ in cord blood T-cell maturation
819 towards Th1 cytokine profile and its epigenetic regulation by fish oil. *Bioscience Reports.*
820 2017;37.
- 821 36. Amarasekera M, Noakes P, Strickland D, Saffery R, Martino DJ, Prescott SL. Epigenome-wide
822 analysis of neonatal CD4(+) T-cell DNA methylation sites potentially affected by maternal fish
823 oil supplementation. *Epigenetics.*9.
- 824 37. van Dijk SJ, Zhou J, Peters TJ, *et al.* Effect of prenatal DHA supplementation on the infant
825 epigenome: results from a randomized controlled trial. *Clinical Epigenetics.* 2016;8:114.
- 826 38. Vähämiko S, Laiho A, Lund R, Isolauri E, Salminen S, Laitinen K. The impact of probiotic
827 supplementation during pregnancy on DNA methylation of obesity-related genes in mothers
828 and their children. *European Journal of Nutrition.* 2018:1-11.
- 829 39. Forsberg A, Huoman J, Söderholm S, *et al.* Pre- and postnatal *Lactobacillus reuteri* treatment
830 alters DNA methylation of infant T helper cells. *Pediatric Allergy and Immunology.* 2020.
- 831 40. de Weerd HA, Badam TV, Martínez-Enguita D, *et al.* MODifieR: an ensemble R package for
832 inference of disease modules from transcriptomics networks. *Bioinformatics (Oxford,*
833 *England).* 2020;36:3918-3919.
- 834 41. D'Aquila P, Carelli L, Rango F, Passarino G, Bellizzi D. Gut Microbiota as Important Mediator
835 Between Diet and DNA Methylation and Histone Modifications in the Host. *Nutrients.*
836 2020;12:597.
- 837 42. Ceccarelli V, Ronchetti S, Marchetti M, *et al.* Molecular mechanisms underlying
838 eicosapentaenoic acid inhibition of HDAC1 and DNMT expression and activity in carcinoma
839 cells. *Biochimica et Biophysica Acta (BBA) - Gene Regulatory Mechanisms.*
840 2020;1863:194481.
- 841 43. González-Becerra K, Ramos-Lopez O, Barrón-Cabrera E, *et al.* Fatty acids, epigenetic
842 mechanisms and chronic diseases: a systematic review. *Lipids in Health and Disease.*
843 2019;18:178.
- 844 44. Salmond RJ, Filby A, Qureshi I, Caserta S, Zamoyska R. T-cell receptor proximal signaling via
845 the Src-family kinases, Lck and Fyn, influences T-cell activation, differentiation, and tolerance.
846 *Immunological Reviews.* 2009;228:9-22.
- 847 45. Kaur S, Bansal Y, Kumar R, Bansal G. A panoramic review of IL-6: Structure,
848 pathophysiological roles and inhibitors. *Bioorganic & Medicinal Chemistry.* 2020;28:115327.
- 849 46. Zhou X, Han X, Lyu S-C, *et al.* Targeted DNA methylation profiling reveals epigenetic
850 signatures in peanut allergy. *JCI Insight.* 2021.

- 851 47. Baccarelli A, Rusconi F, Bollati V, *et al.* Nasal cell DNA methylation, inflammation, lung
852 function and wheezing in children with asthma. *Epigenomics*. 2012;4:91-100.
- 853 48. Bruyins E, Marie-Cardine A, Kirchgessner H, *et al.* T Cell Receptor (TCR) Interacting Molecule
854 (TRIM), A Novel Disulfide-linked Dimer Associated with the TCR-CD3- ζ Complex, Recruits
855 Intracellular Signaling Proteins to the Plasma Membrane. *The Journal of Experimental*
856 *Medicine*. 1998;188:561-575.
- 857 49. Kirchgessner H, Dietrich J, Scherer J, *et al.* The Transmembrane Adaptor Protein Trim
858 Regulates T Cell Receptor (Tcr) Expression and Tcr-Mediated Signaling via an Association
859 with the Tcr ζ Chain. *The Journal of Experimental Medicine*. 2001;193:1269-1284.
- 860 50. Mehta AK, Gracias DT, Croft M. TNF activity and T cells. *Cytokine*. 2018;101:14-18.
- 861 51. Yamada A, Arakaki R, Saito M, Kudo Y, Ishimaru N. Dual Role of Fas/FasL-Mediated Signal
862 in Peripheral Immune Tolerance. *Frontiers in Immunology*. 2017;8:403.
- 863 52. Abrahamsson TR, Jakobsson T, Böttcher MF, *et al.* Probiotics in prevention of IgE-associated
864 eczema: a double-blind, randomized, placebo-controlled trial. *J Allergy Clin Immunol*.
865 2007;119.
- 866 53. Solomon O, Maclsaac J, Quach H, *et al.* Comparison of DNA methylation measured by
867 Illumina 450K and EPIC BeadChips in blood of newborns and 14-year-old children.
868 *Epigenetics*. 2018:1-10.
- 869 54. Tian Y, Morris TJ, Webster AP, *et al.* ChAMP: updated methylation analysis pipeline for
870 Illumina BeadChips. *Bioinformatics (Oxford, England)*. 2017;33:3982-3984.
- 871 55. Teschendorff AE, Marabita F, Lechner M, *et al.* A beta-mixture quantile normalization method
872 for correcting probe design bias in Illumina Infinium 450 k DNA methylation data.
873 *Bioinformatics (Oxford, England)*. 2013;29:189-196.
- 874 56. Morin AM, Gatev E, McEwen LM, *et al.* Maternal blood contamination of collected cord blood
875 can be identified using DNA methylation at three CpGs. *Clinical Epigenetics*. 2017;9:75.
- 876 57. Houseman EA, Accomando WP, Koestler DC, *et al.* DNA methylation arrays as surrogate
877 measures of cell mixture distribution. *BMC bioinformatics*. 2012;13:86.
- 878 58. Johnson WE, Li C, Rabinovic A. Adjusting batch effects in microarray expression data using
879 empirical Bayes methods. *Biostatistics (Oxford, England)*. 2007;8:118-127.
- 880 59. Leek JT, Johnson EW, Parker HS, Jaffe AE, Storey JD. The sva package for removing batch
881 effects and other unwanted variation in high-throughput experiments. *Bioinformatics*.
882 2012;28:882-883.
- 883 60. van Iterson M, van Zwet EW, Consortium B, Heijmans BT. Controlling bias and inflation in
884 epigenome- and transcriptome-wide association studies using the empirical null distribution.
885 *Genome Biology*. 2017;18:19.
- 886 61. Nestor CE, Barrenas F, Wang H, *et al.* DNA methylation changes separate allergic patients
887 from healthy controls and may reflect altered CD4+ T-cell population structure. *PLoS*
888 *Genet*.10.

889

890

891

892

893

894

895

896

897

898

899

900 **DECLARATIONS**

901 *Ethics approval and consent to participate*

902 Parents or legal guardians provided informed consent on behalf of the children prior to
903 inclusion in the study. Ethical permission for this study has been granted by the Regional
904 Ethics Committee for Human Research in Linköping (Dnr 2011/45-31).

905 *Consent for publication*

906 Not applicable

907 *Availability of data and materials*

908 The datasets used and/or analysed in the presented work are available on ArrayExpress, ID:
909 E-MTAB-10341.

910 *Competing interests*

911 The authors report no conflicts of interest.

912 *Funding*

913 This study was supported by grants from the Swedish Research Council (2016-01698 and
914 2019-00989); the Swedish Heart and Lung Foundation (20140321 and 20170365); the
915 Cancer and Allergy Foundation and the Medical Research Council of Southeast
916 Sweden (FORSS-666771 and FORSS-758981).

917 *Author's contributions*

918 M.C.J and K.D. designed the study. K.D. and L.N. were responsible for the clinical evaluation
919 of the children. J.H. has taken part in the sample collection and performed the experimental

920 work presented in this paper. J.E. provided expertise on flow cytometry analyses, and M.G.
921 on the performance of the statistical and bioinformatic analyses. D.M.E., E.O. and J.H.
922 performed the statistical and bioinformatic analyses. J.H. presented the findings. All authors
923 interpreted and discussed the results. J.H. drafted the manuscript. All authors contributed to
924 and approved the final draft for publication.

925 *Acknowledgments*

926 Firstly, we would like to thank the children and mothers included in this study for their
927 participation, and the personnel at the Allergy Center, Linköping for professionally taking care
928 of the families throughout the study period, as well as handling samples in preparation for
929 laboratory work. Our warmest thanks go to our skilled laboratory technicians Camilla
930 Janefjord and Anne-Marie Fornander, for their unfailing collection of samples from the
931 PROOM-3 study. We would also like to thank Simon Söderholm for valuable input in the
932 initial analyses of the DNA methylation data. Lastly, we would like to acknowledge BioGaia®
933 AB and Orkla Health for sponsoring the dietary supplements used in this study, as well as
934 the SNP&SEQ-technology platform at SciLifeLab Uppsala University for yet another
935 constructive collaboration.

936 *Author's information*

937 Not applicable

938

939