

1 **TITLE:** Pooling-in-a-pod: A Strategy for COVID-19 Testing to Facilitate Safe Return to School

2 **KEYWORDS:** COVID-19, SARS-CoV-2, school health, testing, surveillance, pooling

3 **AUTHORS:** Ethan M. Berke, MD, MPH<sup>1</sup>, Lori M. Newman, MD<sup>2</sup>, Suzanna Jemsby, MA<sup>3</sup>, Bethany  
4 Hyde, MHA<sup>1</sup>, Natasha Bhalla, MEd<sup>3</sup>, Natalie E. Sheils, PhD<sup>1</sup>, Nandini Oomman, PhD<sup>3</sup>, John Reppas,  
5 MD, PhD<sup>3</sup>, Prateek Verma, MS<sup>1</sup>, Gerard A. Cangelosi, PhD<sup>4</sup>

6 **AFFILIATIONS:**

7 1. OptumLabs, UnitedHealth Group, Minnetonka, MN

8 2. Washington, DC

9 3. Washington International School, Washington, DC

10 4. Department of Environmental and Occupational Health Sciences, University of Washington,  
11 Seattle, WA

12 **CORRESPONDING AUTHOR:**

13 Ethan M. Berke, MD, MPH

14 OptumLabs, UnitedHealth Group

15 5995 Opus Parkway

16 Minnetonka, MN 55343

17 ethan.berke@uhg.com

18 **ABSTRACT:**

19 The COVID-19 pandemic prompted widespread primary and secondary school closures. Routine testing  
20 of asymptomatic students and staff, as part of a comprehensive program, can help schools open safely.  
21 “Pooling-in-a-pod” is a public health surveillance strategy whereby testing cohorts (pods) are based on  
22 social relationships and physical proximity. Pooled testing provides one laboratory result for the entire  
23 pod, rather than separate results for each individual. Pooling-in-a-pod allowed for weekly on-site point-  
24 of-care testing of all staff and students at an independent preschool to grade 12 school in Washington,  
25 D.C. Staff and older students self-collected anterior nares samples, and trained staff collected samples  
26 from younger students. Overall, 12,885 samples were tested in 1,737 pools for 863 students and 264  
27 staff between November 30, 2020, and April 30, 2021. The average pool size was 7.4 people. Sample  
28 collection to pool result time averaged 40 minutes. Direct testing cost per person per week was \$\$24.24,  
29 including swabs. Four surveillance test pools were positive. During the study period, daily new cases in  
30 Washington, D.C., ranged from 10 to 46 per 100,000 population. A post-launch survey found most  
31 parents (90.3%), students (93.4%), and staff (98.8%) were willing to participate in pooled testing with  
32 confirmatory tests for positive pool members. The school reported a 73.4% decrease in virtual learning  
33 after program initiation. Pooling-in-a-pod is a feasible and cost-effective surveillance strategy that was  
34 acceptable to staff and families and may be appropriate for some schools. School officials and  
35 policymakers can leverage this strategy to facilitate safe, sustainable, in-person schooling.

## 36 INTRODUCTION

37 The COVID-19 pandemic resulted in widespread closures of schools across the United States. Although  
38 these closures were intended to minimize the risk of disease transmission, studies have shown that they  
39 may have had an unintentional adverse impact on approximately 56.4 million school-aged children  
40 though reduced educational attainment and years of life lost.<sup>1</sup> As of this writing, only about half of the  
41 student population is currently in the classroom, with the majority of those in hybrid learning models.<sup>2</sup>  
42 However, some studies suggest that students in school may actually be at lower risk of COVID-19  
43 exposure than students out of school either due to differences in transmissibility or through stricter  
44 enforcement of masking and physical distancing compared to home and community settings.<sup>3</sup> Schools  
45 are now starting to plan for the 2021-2022 school year, and there are calls for a return to full in-person  
46 learning.<sup>4, 5</sup> In addition to benefits for children from an academic and social standpoint,<sup>6-9</sup> returning  
47 students to in-person learning carries considerable value for economically disadvantaged populations  
48 and women.<sup>10, 11</sup> Schools will need to have strategies in place that allows the safe in-person attendance  
49 for students and staff and minimizes operational disruption.

50

51 Strategies to safely keep schools open include daily symptom screening, masking, physical distancing,  
52 extracurricular activity modifications, and optimization of facilities to minimize transmission.<sup>12</sup>  
53 Vaccinations will also play a critical role in reduction and spread of disease. Unfortunately, it is unlikely  
54 that 100% of the staff and students will be fully vaccinated by the coming school year as a result of  
55 vaccine hesitancy and limited availability of vaccines for the youngest age groups. Therefore,  
56 asymptomatic spread, which may account for as much as 60% of transmission in the community and  
57 specific sub-populations, will continue to be a risk.<sup>13</sup> An optimal re-opening strategy for schools should  
58 also include routine SARS-CoV-2 testing with a high-performing test for all students and staff with a  
59 turnaround time that allows for rapid and impactful decisions. Substantial challenges include access to  
60 testing, cost, turnaround time, and policies for addressing positive test results.<sup>14</sup> Most schools do not  
61 currently have the resources or capacity to implement testing strategies for all.<sup>15, 16</sup>

62

63 Pooling of samples from multiple individuals is a strategy used by commercial or reference laboratories  
64 to increase efficiency.<sup>17</sup> If the pool yields a negative test result, all samples are assumed to be negative. If  
65 it is positive, additional testing is used to identify the infected individuals. By combining multiple  
66 samples in a single test, more people can be tested at a lower cost. Pooling is most cost-effective for

67 low-prevalence diseases, where most pools are expected to be negative. Because sample dilution may  
68 reduce sensitivity, it is critical to use technologies with high analytical sensitivity.<sup>18</sup>

69

70 The traditional application of pooling generally does not consider pool composition on social or  
71 geographic relationships. In contrast, “pooling-in-a-pod” is a public health surveillance strategy in which  
72 cohort-specific testing pods are composed based on epidemiologic characteristics such as social  
73 relationships and physical proximity. Pooled testing provides one laboratory result for the pod, rather  
74 than separate results for each individual within the pod. In schools, pods may be classrooms or staffing  
75 clusters (e.g., cafeteria workers, administration team). Pooling-in-a-pod uses these natural relationships  
76 so that actions taken on a positive test result (e.g., contact tracing and confirmatory testing) can be  
77 similar for all pod members.

78

## 79 **PURPOSE**

80 The goal of this demonstration was to evaluate the feasibility of a pooling-in-a-pod strategy to reduce  
81 the number of infections on campus, minimize testing resource requirements, and maintain continuity of  
82 operations, thereby enabling schools to safely operate in the COVID-19 era. The results will help to  
83 guide the development of site-appropriate testing strategies for COVID-19 as well as future infectious  
84 disease outbreaks.

85

## 86 **METHODS**

87 The demonstration project was conducted in a not-for-profit, independent day school in Washington,  
88 D.C., with 904 children and 209 faculty and staff, plus additional contractors, on two campuses,  
89 operating in a hybrid learning model (1 week in person, 1 week off campus) for grade 1–12 students and  
90 fully in-person for preschool and kindergarten. Students had flexibility in moving between on-campus  
91 and distance learning. This project was conducted as an institutional review board-approved study with  
92 consent from parents and staff, and assent by students. The school and its research partners used  
93 intentional design principles to design the project, including outlining project leadership, goals, available  
94 resources, scenario planning, operations, and stakeholder engagement (Figure 1).

95

96 An online calculator<sup>19</sup> was used to compare various hypothetical testing scenarios that allowed for the  
97 school to weigh the benefits of testing platform performance, testing frequency, cost, turnaround time,  
98 and pooling based on their operational constraints and program goals.<sup>20</sup> Weekly testing plus symptom  
99 tracking with a \$20, 60% positive agreement, 98% negative agreement test (e.g., individual antigen test  
100 in asymptomatic people) was estimated to cost \$30.95 per person per week with confirmatory testing or  
101 \$20.45 without and would reduce infections compared to symptom tracking only by 47% but result in  
102 322 false positive results over 100 days. In contrast, a \$175, 98% positive agreement, 99.5% negative  
103 agreement test (e.g., RT-PCR test) with same-day results administered weekly using pooling-in-a-pod  
104 with 14 people per pool was estimated to cost \$21.57 per person per week with confirmatory testing, or  
105 \$13.17 without, and would reduce infections by 98% but result in 82 false positive results over 100 days.

106

107 Based on this exercise, the school selected the portable, single-use Visby Medical COVID-19 test  
108 (Visby Medical, Palo Alto, CA), with performance similar to other nucleic acid amplification tests  
109 (NAATs),<sup>21,22</sup> but conducted on-site with a 30-minute turnaround time. The device was validated for  
110 pool sizes of 5 to 25; limit of detection was 2000 genomic copies/mL at 15 swabs per pool.<sup>23</sup> The test  
111 was used according to federal guidance for pooled testing.<sup>24,25</sup> All swabs were introduced directly into a  
112 single buffer vial to minimize dilution during pooling.<sup>18</sup> The target pool sizes of 8 to 14 for students and  
113 4 to 6 for teachers/staff were based on class size, schedule, and estimated daily new cases in  
114 Washington, D.C. The range of 10 to 46 new cases per 100,000 population during the study period  
115 corresponded to a moderate to substantial community transmission risk.<sup>26</sup> The school required persons to  
116 have a weekly negative test result to enter campus, either through the school pooled testing program at  
117 no cost to the participant, or through individual NAATs at the same frequency at their own expense.  
118 Alternatively, students could opt for distance learning only.

119

120 After a one-day, on-site training, the school operated all daily aspects including sample collection,  
121 device operation, data logging in secure software, and communications (Figure 2). Pods were designed  
122 at the school's discretion to align to its operational needs and were composed of students only, staff  
123 only, or a mix depending on grade and schedule. Students tested twice per week when attending school  
124 in-person and did not test in their off week, resulting in an average testing frequency of once per week.  
125 Staff and younger students in full, on-site learning tested weekly. If a student or staff member was  
126 absent during their regular testing event, or if a substitute teacher came to campus mid-week, they were  
127 tested when they arrived on campus. Grades 6 to 12 students and all staff provided self-collected

128 anterior nares samples<sup>27</sup> and a trained clinician collected anterior nasal samples from students in  
129 preschool to grade 5.

130

131 Pooled, not individual, results were communicated to staff and families via a single community-wide  
132 email update after each round of testing. If a pool was negative, all participants remained on campus. If  
133 a student pool was positive, students in that pool were sent home and advised to seek a NAAT in a  
134 clinical setting. If a staff pool was positive, all participants in that pool were asked to provide additional  
135 samples for sub-pooling, which minimized the number of staff adversely impacted by being in a positive  
136 pool. When a staff sub-pool was positive, members were confidentially advised to seek NAATs covered  
137 by employer insurance. Students and staff in a positive pool could not return until a negative NAAT  
138 result was available.

139

## 140 **OUTCOMES**

141 From November 30, 2020, to April 30, 2021, 863 students and 264 staff and contractors participated at  
142 least once in the testing program (Table 2). Students in grades 6 to 12 started testing in November, while  
143 younger students did not participate until January 21, 2021. Grade 6 to 12 students tested an average of  
144 11.5 times (range 1 – 17), grade pre-K to 5 students tested an average of 10.6 times (range 1 – 17), and  
145 staff 12.7 times (range 1 – 25). Up to 542 students and 207 staff were tested each session; a total of  
146 12,885 samples were tested in 1,737 pools. Of all students who came to campus during the study period,  
147 only one student chose to provide external proof of negative NAAT testing on a weekly basis instead of  
148 participating in the program. Average pool size was 7.4 (range 2 – 17). Testing time from sample  
149 collection to result averaged 40 minutes. Over 34 testing sessions in the study period, there were 1,733  
150 negative and four positive pools. One pool of four staff was positive; outside individual confirmatory  
151 testing with NAAT identified a single positive person. A second positive pool of four staff was  
152 determined to be a false positive based on follow-up sub-pooling and outside confirmatory testing with  
153 NAAT. There were two additional positive pools of students; all students provided individual  
154 confirmatory NAAT results and in each positive pool a single asymptomatic positive student was  
155 identified. One individual reported a positive outside test during the study period, 4 days after a negative  
156 pooled test. Four people tested positive over the holiday break when no school testing was being  
157 performed. There were no confirmed cases of transmission within the school. The weekly direct per-  
158 person cost of the program was calculated identifying the cost per person per week, including swab, and

159 applying a weighted average to calculate the overall per person cost. The weekly direct per-person cost  
160 of the program was \$24.24.

161

162 Parents of grade 6 to 12 students and staff were surveyed after three weeks of testing; 309 parents, 88  
163 students, and 84 staff responded (Table 1). After the program was launched, the majority of parents  
164 (90%), students (93%), and staff (99%) were open to participation. Parents, students, and staff reported  
165 increased comfort with in-person learning (82%, 76%, 65% respectively). Comments included the need  
166 for accurate, rapid results; a testing program that included everyone on campus; and minimized  
167 disruption to learning. Concerns centered on privacy, confidentiality, or responsibility for confirmatory  
168 testing. Prior to implementation on November 30, 2020, 90 of grade 6 to 12 students were in a distance  
169 learning model. As of April 30, 2021, only 34 remained in a distance learning model; similarly, as of  
170 November 30, 2020, 53 primary school students were in distance learning and as of April 30, 2021, four  
171 students were in distance learning. This corresponded to a 62.2% decrease in virtual learning for 6 to 12  
172 grade students ( $p < 0.00001$ ) and a 92.4% decrease in virtual learning for preschool to grade 5 students  
173 after initiation of the program ( $p < 0.00001$ ).

174

## 175 **LESSONS LEARNED**

176 Pooling-in-a-pod allows for more accessible COVID-19 testing in primary and secondary schools. This  
177 approach balances cost and convenience while optimizing turnaround time, frequency, and performance  
178 compared to other testing strategies such as non-pooled approaches. The program has a high acceptance  
179 and increases comfort with in-person attendance. It enables maximal on-campus learning within the  
180 framework of local restrictions. This program identified asymptomatic infection, possibly averting  
181 ongoing transmission.

182

183 Pooling-in-a-pod reduces costs and increases throughput. By assembling pods based on social networks  
184 and geography, particularly when coupled with rapid turnaround time, schools can make rapid decisions  
185 that can preserve continuity of operations. Pooled testing reduces the number of tests required, and  
186 therefore the cost of screening for asymptomatic positive cases in a school. Although this school  
187 required individual confirmatory diagnostic testing (and shifted this cost to insurance or publicly funded  
188 testing programs), other schools may instead use quarantine or isolation to further reduce organizational  
189 costs.<sup>28</sup>

190

191 It is widely believed that COVID-19 will become an endemic disease with intermittent regional  
192 outbreaks.<sup>29</sup> Even as progressively larger numbers of teachers and students are vaccinated, vaccination  
193 of all school children will take time. Not all members of a school community may be vaccinated, and it  
194 is not yet clear what the risk of asymptomatic shedding is among vaccinated individuals, the role  
195 variants may play in asymptomatic transmission, and if booster vaccines will be required. Given the  
196 increasing body of evidence suggesting negative effects of remote learning on students, families, and  
197 society, and the expected presence of COVID-19 in the community, introduction of school surveillance  
198 testing programs may be an important investment to fully open school in the fall and stay open through  
199 the school year, complementing other mitigation efforts that include vaccinations.

200

201 This program was implemented with only one month of lead time. This could be shortened through  
202 adaptation of existing protocols and educational materials. Pooling-in-a-pod could potentially be scaled  
203 up rapidly with funding, leadership, and support from federal, private, and non-profit partners in health  
204 and education, even in settings such as public schools where implementation and workforce capacity are  
205 more limited. Rapid rollout of pooling-in-a-pod may help in the public health response to future  
206 pandemics as well. Despite positive acceptance of the program by the school community, achieving high  
207 participation rates to identify asymptomatic cases may require re-examination of school policies that  
208 mandate testing to be on campus, or utilizing an opt-out as opposed to opt-in consent processes.

209

210 This study had several limitations. The overall high approval of the program may not be generalizable to  
211 other settings and may be biased by a low survey response rate. While the majority of the parents are  
212 upper income, many of the parents and staff do not speak English as a first language. As such,  
213 communication routinely included slides with clear directions, non-verbal images, and was conducted by  
214 multilingual staff in English, French, and Spanish. Indirect costs were not included in actual cost  
215 estimates, the primary indirect cost being program staffing. Many schools will require additional human  
216 and financial resources to implement a testing program than were required for this demonstration  
217 project. However, pooled testing can reduce the cost of a testing program through efficiency gains. On-  
218 site or near-site high-throughput testing platforms may reduce costs further with a minimal loss of  
219 turnaround time. Tools that allow comparisons of cost, performance, and test frequency, such as online  
220 calculators,<sup>19</sup> assist schools to make these strategic decisions.



221

222 Pooling-in-a-pod is a cost-effective, feasible, and acceptable surveillance testing strategy for primary  
223 and secondary schools to safely operate in-person when included as part of a comprehensive package of  
224 interventions to reduce transmission of SARS-CoV-2. Other innovations, including on-site and near-site  
225 dedicated labs, should be developed to facilitate national scale-up for all children. Pooling-in-a-pod  
226 public health surveillance could also be implemented for businesses and other institutions where in-  
227 person presence is essential.

228

229 **ACKNOWLEDGEMENTS:** Students, parents, and staff of the Washington International School;  
230 Bruce Tromberg, PhD, National Institute of Biomedical Imaging and Bioengineering (NIBIB), National  
231 Institutes of Health (NIH); RADM Michael Iademarco, USPHS and Centers for Disease Control and  
232 Prevention

233 **REFERENCES**

234

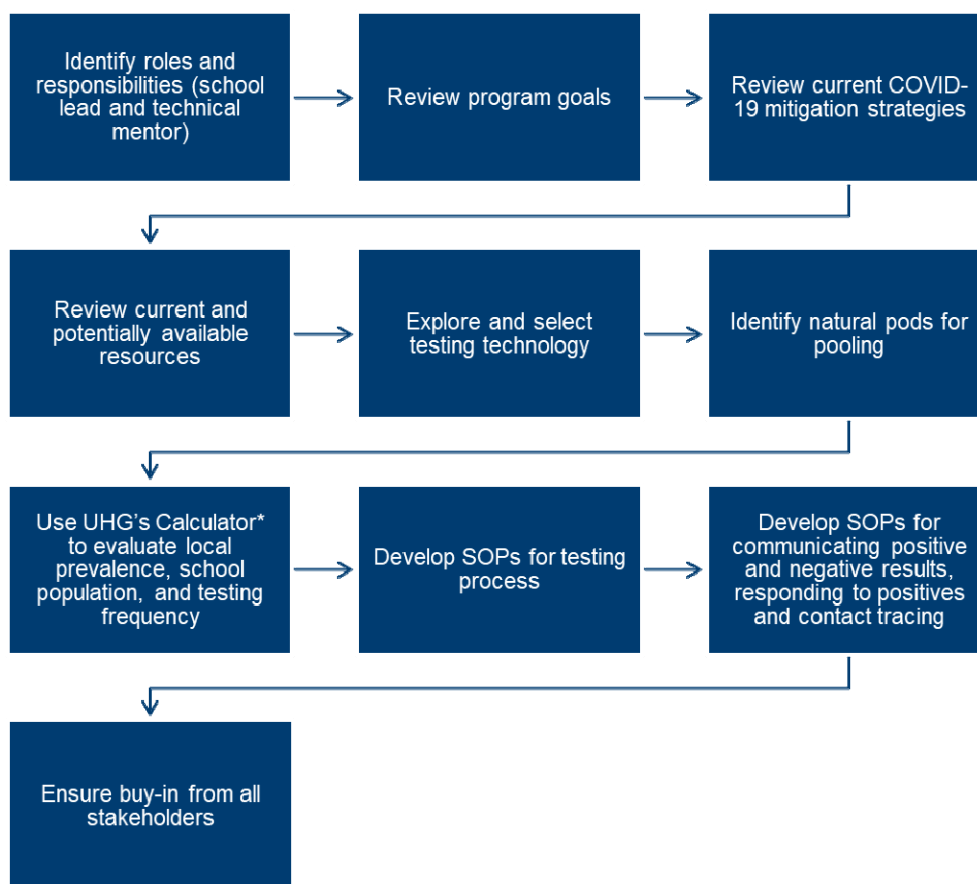
- 235 1. Christakis DA, Van Cleve W, Zimmerman FJ. Estimation of US Children's Educational  
236 Attainment and Years of Life Lost Associated With Primary School Closures During the Coronavirus  
237 Disease 2019 Pandemic. *JAMA Netw Open*. 2020;3(11):e2028786.  
238 doi:10.1001/jamanetworkopen.2020.28786.
- 239 2. Oster E, National Association of Elementary School Principals, National Association of  
240 Secondary School Principals, AASA -The School Superintendents Association. National COVID-19  
241 School Response Dashboard. [https://statsiq.co1.qualtrics.com/public-](https://statsiq.co1.qualtrics.com/public-dashboard/v0/dashboard/5f78e5d4de521a001036f78e#/dashboard/5f78e5d4de521a001036f78e?pageId=Page_c0595a5e-9e70-4df2-ab0c-14860e84d36a)  
242 [dashboard/v0/dashboard/5f78e5d4de521a001036f78e#/dashboard/5f78e5d4de521a001036f78e?pageId=](https://statsiq.co1.qualtrics.com/public-dashboard/v0/dashboard/5f78e5d4de521a001036f78e#/dashboard/5f78e5d4de521a001036f78e?pageId=Page_c0595a5e-9e70-4df2-ab0c-14860e84d36a)  
243 [Page\\_c0595a5e-9e70-4df2-ab0c-14860e84d36a](https://statsiq.co1.qualtrics.com/public-dashboard/v0/dashboard/5f78e5d4de521a001036f78e#/dashboard/5f78e5d4de521a001036f78e?pageId=Page_c0595a5e-9e70-4df2-ab0c-14860e84d36a). Accessed January 28, 2021.
- 244 3. Centers for Disease Control and Prevention. Science Brief: Transmission of SARS-CoV-2 in K-  
245 12 schools. [https://www.cdc.gov/coronavirus/2019-ncov/more/science-and-](https://www.cdc.gov/coronavirus/2019-ncov/more/science-and-research/transmission_k_12_schools.html)  
246 [research/transmission\\_k\\_12\\_schools.html](https://www.cdc.gov/coronavirus/2019-ncov/more/science-and-research/transmission_k_12_schools.html). Accessed February 12, 2021.
- 247 4. Schnell M. Fauci says school should be open 'full blast' five days a week in the fall. *The Hill*.  
248 [https://thehill.com/policy/healthcare/553494-fauci-says-school-should-be-open-full-blast-five-days-a-](https://thehill.com/policy/healthcare/553494-fauci-says-school-should-be-open-full-blast-five-days-a-week-in-the-fall)  
249 [week-in-the-fall](https://thehill.com/policy/healthcare/553494-fauci-says-school-should-be-open-full-blast-five-days-a-week-in-the-fall). May 13, 2021.
- 250 5. Goldstein D. President of Key Teachers' Union Shares Plea: 'Schools Must Be Open' in Fall.  
251 *New York Times*. <https://www.nytimes.com/2021/05/13/us/reopening-schools-teachers-union.html>. May  
252 13, 2021.
- 253 6. Stein P. This entire second-grade D.C. class fell behind in reading. Now what? *Washington Post*.  
254 [https://www.washingtonpost.com/local/education/learning-to-read-on-zoom/2020/12/01/50718514-](https://www.washingtonpost.com/local/education/learning-to-read-on-zoom/2020/12/01/50718514-2b78-11eb-9b14-ad872157ebc9_story.html)  
255 [2b78-11eb-9b14-ad872157ebc9\\_story.html](https://www.washingtonpost.com/local/education/learning-to-read-on-zoom/2020/12/01/50718514-2b78-11eb-9b14-ad872157ebc9_story.html). Dec 1, 2020.
- 256 7. Buonsenso D, De Rose C, Moroni R, Valentini P. SARS-CoV-2 Infections in Italian Schools:  
257 Preliminary Findings After 1 Month of School Opening During the Second Wave of the Pandemic.  
258 *Front Pediatr*. 2020;8:615894. doi:10.3389/fped.2020.615894.
- 259 8. Lee J. Mental health effects of school closures during COVID-19. *Lancet Child Adolesc Health*.  
260 2020;4(6):421. doi:10.1016/S2352-4642(20)30109-7.
- 261 9. Loades ME, Chatburn E, Higson-Sweeney N, et al. Rapid Systematic Review: The Impact of  
262 Social Isolation and Loneliness on the Mental Health of Children and Adolescents in the Context of

- 263 COVID-19. *J Am Acad Child Adolesc Psychiatry*. 2020;59(11):1218-1239 e3.  
264 doi:10.1016/j.jaac.2020.05.009.
- 265 10. Bateman N. Working parents are key to COVID-19 recovery. Brookings Institution.  
266 <https://www.brookings.edu/research/working-parents-are-key-to-covid-19-recovery/>. Accessed January  
267 22, 2021.
- 268 11. Hsu A. “This is too much:” working moms are reaching the breaking point during the pandemic.  
269 NPR. [https://www.npr.org/2020/09/29/918127776/this-is-too-much-working-moms-are-reaching-the-](https://www.npr.org/2020/09/29/918127776/this-is-too-much-working-moms-are-reaching-the-breaking-point-during-the-pandemic)  
270 [breaking-point-during-the-pandemic](https://www.npr.org/2020/09/29/918127776/this-is-too-much-working-moms-are-reaching-the-breaking-point-during-the-pandemic). Accessed January 22, 2021.
- 271 12. Centers for Disease Control and Prevention. Operational Strategy for K-12 Schools through  
272 Phased Mitigation. [https://www.cdc.gov/coronavirus/2019-ncov/community/schools-](https://www.cdc.gov/coronavirus/2019-ncov/community/schools-childcare/operation-strategy.html)  
273 [childcare/operation-strategy.html](https://www.cdc.gov/coronavirus/2019-ncov/community/schools-childcare/operation-strategy.html). February 12, 2021.
- 274 13. Johansson MA, Quandelacy TM, Kada S, et al. SARS-CoV-2 Transmission From People  
275 Without COVID-19 Symptoms. *JAMA Netw Open*. 2021;4(1):e2035057.  
276 doi:10.1001/jamanetworkopen.2020.35057.
- 277 14. Rafiei Y, Mello MM. The Missing Piece - SARS-CoV-2 Testing and School Reopening. *N Engl*  
278 *J Med*. 2020;383(23):e126. doi:10.1056/NEJMp2028209.
- 279 15. Burke M. Los Angeles Unified will offer coronavirus testing to all students, staff in  
280 unprecedented effort. [https://edsources.org/2020/los-angeles-unified-will-offer-coronavirus-testing-to-all-](https://edsources.org/2020/los-angeles-unified-will-offer-coronavirus-testing-to-all-students-staff-in-unprecedented-effort/638448)  
281 [students-staff-in-unprecedented-effort/638448](https://edsources.org/2020/los-angeles-unified-will-offer-coronavirus-testing-to-all-students-staff-in-unprecedented-effort/638448). Accessed January 22, 2021.
- 282 16. Silva C. New York City schools will reopen with new COVID-19 testing protocol. NPR.  
283 [https://www.npr.org/sections/coronavirus-live-updates/2020/11/29/939902582/new-york-city-schools-](https://www.npr.org/sections/coronavirus-live-updates/2020/11/29/939902582/new-york-city-schools-will-reopen-with-new-covid-19-testing-protocol)  
284 [will-reopen-with-new-covid-19-testing-protocol](https://www.npr.org/sections/coronavirus-live-updates/2020/11/29/939902582/new-york-city-schools-will-reopen-with-new-covid-19-testing-protocol). Accessed January 22, 2021.
- 285 17. Abdalhamid B, Bilder CR, McCutchen EL, Hinrichs SH, Koepsell SA, Iwen PC. Assessment of  
286 Specimen Pooling to Conserve SARS CoV-2 Testing Resources. *Am J Clin Pathol*. 2020;153(6):715-  
287 718. doi:10.1093/ajcp/aqaa064.
- 288 18. Perchetti GA, Sullivan KW, Pepper G, et al. Pooling of SARS-CoV-2 samples to increase  
289 molecular testing throughput. *J Clin Virol*. 2020;131:104570. doi:10.1016/j.jcv.2020.104570.
- 290 19. UnitedHealth Group. COVID-19 Testing Strategy Simulator.  
291 <https://calculator.unitedinresearch.com>. Accessed October 15, 2020.

- 292 20. Lyng G, Sheils N, Kennedy C, Griffin D, Berke EM. Identifying optimal covid-19 testing  
293 strategies for schools and businesses: balancing testing frequency, individual test technology, and cost.  
294 *PLOS One*. 2021;16(3). doi:<https://doi.org/10.1371/journal.pone.0248783>.
- 295 21. Food and Drug Administration. Visby Medical COVID-19 Point of Care Test.  
296 <https://www.fda.gov/media/145914/download>. 2021.
- 297 22. Food and Drug Administration. SARS-CoV-2 Reference Panel Comparative Data.  
298 [https://www.fda.gov/medical-devices/coronavirus-covid-19-and-medical-devices/sars-cov-2-reference-](https://www.fda.gov/medical-devices/coronavirus-covid-19-and-medical-devices/sars-cov-2-reference-panel-comparative-data)  
299 [panel-comparative-data](https://www.fda.gov/medical-devices/coronavirus-covid-19-and-medical-devices/sars-cov-2-reference-panel-comparative-data). 2021.
- 300 23. Hyde BL, Verma P, Berke EM. Pooled sample testing for SARS-CoV-2. *medRxiv*. January 26,  
301 2021. doi:10.1101/2021.01.22.21250339
- 302 24. Centers for Medicare and Medicaid Services. Frequently Asked Questions: SARS-CoV-2  
303 Surveillance Testing. [https://www.cms.gov/files/document/06-19-2020-frequently-asked-questions-](https://www.cms.gov/files/document/06-19-2020-frequently-asked-questions-covid-surveillance-testing.pdf)  
304 [covid-surveillance-testing.pdf](https://www.cms.gov/files/document/06-19-2020-frequently-asked-questions-covid-surveillance-testing.pdf). Accessed January 20, 2021.
- 305 25. Food and Drug Administration. Pooled Sample Testing and Screening Testing for COVID-19.  
306 [https://www.fda.gov/medical-devices/coronavirus-covid-19-and-medical-devices/pooled-sample-testing-](https://www.fda.gov/medical-devices/coronavirus-covid-19-and-medical-devices/pooled-sample-testing-and-screening-testing-covid-19)  
307 [and-screening-testing-covid-19](https://www.fda.gov/medical-devices/coronavirus-covid-19-and-medical-devices/pooled-sample-testing-and-screening-testing-covid-19). Accessed February 12, 2021.
- 308 26. District of Columbia. District of Columbia Reopening Metrics.  
309 <https://coronavirus.dc.gov/page/reopening-metrics>. Accessed May 18, 2021.
- 310 27. Tu YP, Jennings R, Hart B, et al. Swabs Collected by Patients or Health Care Workers for  
311 SARS-CoV-2 Testing. *N Engl J Med*. 2020;383(5):494-496. doi:10.1056/NEJMc2016321.
- 312 28. Centers for Disease Control and Prevention. Isolate If You Are Sick.  
313 <https://www.cdc.gov/coronavirus/2019-ncov/if-you-are-sick/isolation.html>. Accessed February 9, 2021.
- 314 29. Phillips N. The coronavirus is here to stay - here's what that means. *Nature*.  
315 2021;590(7846):382-384. doi:10.1038/d41586-021-00396-2.  
316

317 **FIGURE 1. Design and implementation of a school-based pooling-in-a-pod strategy.**

318



319

320

321 **FIGURE 2. Operational flowchart for pooling-in-a-pod testing of faculty and students.**

322

323

324

325

326

327

328

329

330

331

332

333

334

335

336

337

338

339

340

341

342

343

344

345

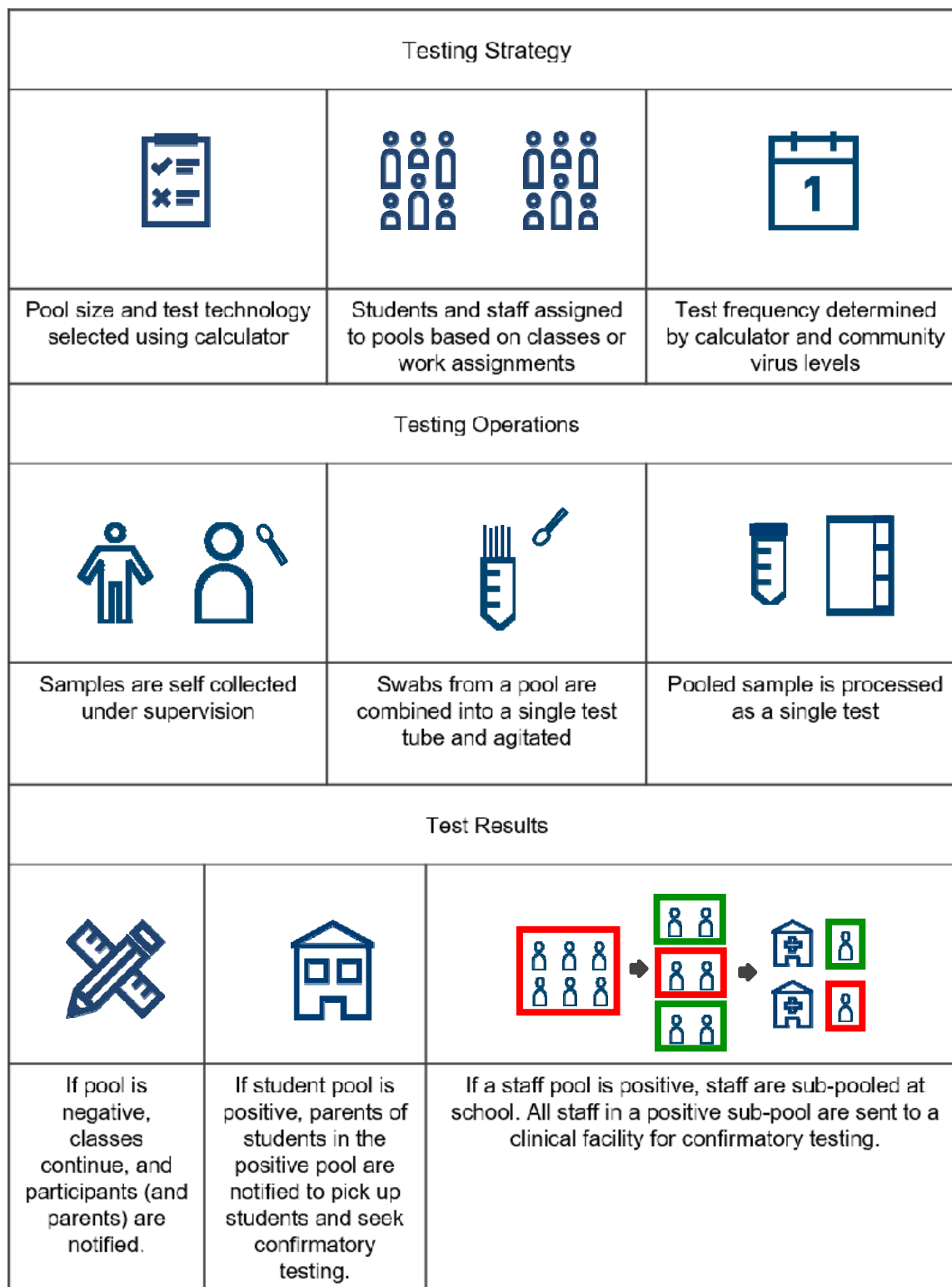
346

347

348

349

350





352 **TABLE 1. Parent, student, and staff attitudes to pooled testing in a survey administered three**  
 353 **weeks after program initiation.**

	AGREE or STRONGLY AGREE (%)		
	PARENTS n=309	STUDENTS (Grades 6-12) n=88	STAFF n=84
Response Rate (%)	24	19	38
QUESTION			
Testing students, staff, and faculty on a regular basis is important to ensure that school can remain open and the WIS community can be as safe as possible.	92	95	93
Pre-launch: I am open to being part of a pooled testing protocol once or twice a week, with an individual confirmatory test required if the pool is positive	89	88	92
Post-launch: I am open to being part of a pooled testing protocol once or twice a week, with an individual confirmatory test required if the pool is positive	90	93	99
I feel that students or faculty who refuse to be tested individually or as part of a pool on a frequent basis should not be allowed to attend in person classes.	80	83	74
After being trained, I am comfortable collecting my own sample under observation at the school.	N/A <sup>1</sup>	88	96
I believe the testing program increases my comfort with the school moving toward full, in-person learning, even if other schools in the area remain in hybrid or stay-at-home models.	82	76	65
Now that I have been tested, I believe it is just as important to wear a mask, wash hands, and maintain physical distancing.	N/A	92	96

<sup>1</sup> N/A: Not Applicable



354 **Table 2. Student and staff pod attributes and pool results.**

355

<b>PODS</b>	<b>Number Participating at least once</b>	<b>Number of Sessions (mean, range)</b>	<b>Average Pool Size (range)</b>	<b>Total Pools (number positive)</b>
<b>STAFF</b>	264	12.7 (1-25)	6.62 (2-13)	418 (2)
<b>STUDENTS GR 6–12</b>	442	11.5 (1-17)	7.6 (2-17)	670 (0)
<b>STUDENTS PRESCHOOL–GR 5</b>	421	11.6 (1-17)	8.1 (3-16)	160 (2)
<b>MIXED STUDENT &amp; STAFF</b>	N/A	N/A	10.8 (2-17)	489 (0)
<b>TOTAL</b>	1127	11.8 (1-25)	7.4 (2-17)	1737 (4)