

A polygenic risk score for coronary heart disease performs well in individuals aged 70 years and older

Johannes T. Neumann, MD, MCR^{a,b,c,*}; Moeen Riaz^{a,†}; Andrew Bakshi, PhD^a; Galina Polekhina, PhD^a; Le T. P. Thao, PhD^a; Mark R. Nelson, PhD^{a,d}; Robyn L. Woods, PhD^a; Gad Abraham, PhD^e; Michael Inouye, PhD^{e,f}; Christopher M. Reid, PhD^{a,g}; Andrew M. Tonkin, MD^a; John McNeil, PhD^a & Paul Lacaze, PhD^{a*}

Affiliations:

a. Department of Epidemiology and Preventive Medicine, School of Public Health and Preventive Medicine, Monash University, Melbourne, Australia.

b. Department of Cardiology, University Heart & Vascular Centre, Hamburg, Hamburg, Germany.

c. German Centre for Cardiovascular Research (DZHK), Partner Site Hamburg/Kiel/Lübeck, Hamburg, Germany.

d. Menzies Institute for Medical Research, University of Tasmania, Hobart, Australia.

e. Cambridge Baker Systems Genomics Initiative, Baker Heart and Diabetes Institute, Melbourne, VIC, Australia.

f. Department of Public Health and Primary Care, University of Cambridge, Cambridge, United Kingdom.

g. School of Public Health, Curtin University, Perth, WA, Australia.

[†] Both authors should be considered as first authors.

^{*} Both authors are corresponding authors.

Disclosures: No conflicts were reported.

Acknowledgements: We thank the ASPREE trial staff, participants, and general practitioners, and the Ramaciotti Centre for Genomics.

Funding: Supported by the National Institute on Aging and the National Cancer Institute at the National Institutes of Health (grant number U01AG029824); the National Health and Medical Research Council of Australia (grant numbers 334047, 1127060); Monash University and the Victorian Cancer Agency. Genotyping supported by Bioplatforms Australia, National Framework Initiative (2018-2020). J.N. is recipient of a fellowship by the Deutsche Forschungsgemeinschaft (NE 2165/1-1). C.M.R. is supported through a NHMRC Principal Research Fellowship (APP 1136372). P.L is supported by a National Heart Foundation Future Leader Fellowship (102604).

Word count: 3894

Address for correspondence:

Paul Lacaze, PhD and Johannes T. Neumann, MD
Department of Epidemiology and Preventive Medicine
School of Public Health and Preventive Medicine
99 Commercial Road
3004 Melbourne, Victoria, Australia

Email: paul.lacaze@monash.edu; johannes.neumann@monash.edu

NOTE: This preprint reports new research that has not been certified by peer review and should not be used to guide clinical practice.

Abstract

Background: The use of a polygenic risk score (PRS) to predict coronary heart disease (CHD) events has been demonstrated in the general adult population. However, whether predictive performance extends to older individuals is unclear.

Aim: To evaluate the predictive value of a PRS for incident CHD events in a prospective cohort of individuals aged 70 years and older.

Methods: We used data from 12,792 genotyped participants of the ASPREE trial, a randomized placebo-controlled trial investigating the effect of daily 100mg aspirin on disability-free survival in healthy older people. Participants had no previous history of diagnosed atherothrombotic cardiovascular events, dementia, or persistent physical disability at enrolment. We calculated a PRS comprising 1.7 million genetic variants (metaGRS). The primary outcome was a composite of incident myocardial infarction or CHD death over 5 years.

Results: At baseline, the median population age was 73.9 years and 54.9% were female. In total, 254 incident CHD events occurred. When the PRS was added to conventional risk factors, it was independently associated with CHD (hazard ratio 1.24 [95% confidence interval [CI] 1.08-1.42], $p=0.002$). The AUC of the conventional model was 70.53 (95%CI 67.00-74.06), and after inclusion of the PRS increased to 71.78 (95%CI 68.32-75.24, $p=0.019$), demonstrating improved prediction. Reclassification was also improved, as the continuous net reclassification index after adding PRS to the conventional model was 0.25 (95%CI 0.15-0.28).

Conclusions: A PRS for CHD performs well in older people, suggesting that the clinical utility of genomic risk prediction for CHD extends to this distinct high-risk subgroup.

Keywords: Polygenic risk score, PRS, CHD, coronary heart disease, risk prediction.

1 Introduction

2 An increasing number of recent studies have suggested the potential clinical utility of using a
3 polygenic risk score (PRS) to improve the prediction of coronary heart disease (CHD) events.¹⁻

4 ⁸ It is now well established that individuals in the general population with a high genetic risk
5 score will have higher risk for CHD events, compared to those with a low score.³ Furthermore,
6 the addition of a PRS has been shown to significantly improve CHD risk prediction when added
7 to a risk model comprised of conventional risk factors.⁴ PRS performance for CHD risk
8 prediction has recently been validated in more ethnically diverse populations^{5, 6} and
9 populations of European-descent, where improved CHD risk prediction has been shown.⁷⁻⁹

10 The use of genomics in CHD risk prediction has important clinical implications, given the
11 burden of CHD remains high in most countries, despite significant improvements in prevention
12 and treatment. Improved approaches to risk prediction and early intervention may help to
13 address the burden, and genomics presents a new opportunity. However, prior studies
14 investigating a genomic risk scores for CHD risk prediction have mostly included individuals
15 with a mean age ranging from 50 to 60 years or younger. The use of PRS as a risk factor for
16 CHD has not previously been investigated in older individuals specifically, who are themselves
17 a distinct high-risk population.

18 In addition to the potential differences in PRS performance, older individuals may also require
19 customized CHD risk prediction models with regards to conventional clinical risk factors.¹⁰
20 Prediction models used to estimate the risk of future CHD events are usually derived from
21 younger populations and based on conventional risk factors such as blood pressure, diabetes,
22 smoking or blood lipids.^{11, 12} These risk models do not fully explain individual risk in older
23 people, and may require calibration. Here, we sought to investigate the prognostic value of a
24 PRS for CHD in a population of older individuals without a history of CHD events, when added
25 to a conventional risk factor model which we constructed. The objective of our study was to
26 determine whether the potential clinical utility of a PRS for CHD would extend to older
27 individuals aged 70 years and older.

28 **Methods**

29 Study design and population

30 The genotyped population was comprised of participants of the ASPirin in Reducing Events in
31 the Elderly (ASPREE) trial. Study design¹³ and trial results^{14, 15} have been published previously.
32 ASPREE was a randomized double-blind placebo-controlled clinical trial investigating the
33 effect of daily 100mg aspirin on disability-free survival over a median 4.6-years (interquartile
34 range 2.1 years) of follow-up. The trial recruited 19,114 individuals aged ≥ 70 years (≥ 65 years
35 for US minorities), who had no prior cardiovascular events, and were free from dementia or
36 physical disability at enrolment. Participants had no previous diagnosis of myocardial
37 infarction; heart failure; angina pectoris; stroke; diagnosis of atrial fibrillation; or systolic blood
38 pressure ≥ 180 mmHg. Genetic analyses included 12,792 participants of European descent
39 who provided samples and informed consent (Figure S1). The study was approved by local
40 Ethics Committees and registered on Clinicaltrials.gov (NCT01038583).

41 Endpoint

42 The primary endpoint for this secondary analysis was incident CHD, defined as a composite
43 of incident myocardial infarction or CHD death. CHD death included deaths coded as related
44 to fatal myocardial infarction, sudden cardiac death, rapid cardiac death, or other coronary
45 death. All events were assessed by blinded Adjudication Committees, as described
46 previously¹⁴.

47 Risk model, genotyping and polygenic risk score

48 The conventional risk model included age, sex, smoking status (current versus former/never),
49 systolic blood pressure, non-high-density-lipoprotein (HDL)-cholesterol, HDL-cholesterol,
50 diabetes and serum creatinine. Selection of variables was based on prior risk models.¹² Serum
51 creatinine was included based on prior evidence from studies of CHD risk in older individuals.¹⁶
52 ¹⁷ Aspirin treatment had no effect on CHD risk in the ASPREE population, and was therefore
53 not included in the model (Supplementary results).

54 Genotyping was performed on 14,052 DNA samples from ASPREE participants using the
55 Axiom 2.0 Precision Medicine Diversity Research Array (Thermo Fisher Scientific, CA, USA)
56 following standard protocols. Variant calling used a custom pipeline aligned to human
57 reference genome hg38. Samples from 12,792 participants passed the following filters:
58 unrelated; Non-Finnish European genetic descent; minimum age at randomization 70 years;
59 and self-reported white racial ancestry. To define genetic descent, we performed principal
60 component analysis (PCA) using the 1000 Genomes reference population and excluded
61 ASPREE samples that did not overlap with the Non-Finnish European 1000 Genomes
62 cluster (Supplementary material, Figure S2).¹⁸ Imputation was performed using the haplotype
63 reference consortium, European samples (University of Michigan imputation server).¹⁹ Post-
64 imputation QC removed variants with low imputation quality scores ($r^2 < 0.3$).

65 We calculated PRS in ASPREE using the metaGRS for CAD⁴ consisting of 1.7 million genetic
66 variants downloaded from the Polygenic Score Catalog.²⁰ In the ASPREE data, 1,745,180
67 (99.6%) of metaGRS SNPs were present (6,140 and 17 SNPs were removed due to variant
68 ID and allele code mismatch, respectively). Plink version 1.9 was used to calculate the
69 weighted sum for effect size of the number of risk alleles for each variant.²¹

70 Statistical analyses

71 Participants with available PRS were included. For continuous variables, the mean and SD are
72 reported. For binary variables, absolute and relative frequencies are provided. Correlation of
73 continuous variables was assessed by Spearman correlation coefficients visualized in a
74 correlation matrix using the package “corrplot”. A multivariable Cox proportional hazards
75 regression model including only predictors from the conventional model was used to evaluate
76 the risk of incident CHD events within 5 years. Continuous variables were used as linear
77 predictors.

78 The model was re-evaluated after adding the continuous PRS distribution per one SD change,
79 and then by adding PRS divided into tertiles, using the lowest tertile as the reference group,
80 compared with the second and third (higher risk) tertiles. Sensitivity analyses were performed

81 after adding use of antihypertensive drugs, statins and genetic ethnicity PCAs to the
82 multivariable model (Supplementary material). Kaplan-Meier estimates for the incidence of
83 CHD events within 5 years were calculated using the “survival” package and stratified by PRS
84 tertiles.

85 The area under the curve (AUC) was calculated for each predictor, for the conventional model
86 and after addition of the continuous PRS using time-dependent receiver-operating-
87 characteristics. The analyses were repeated for subgroups according to sex and PRS tertiles
88 (Supplementary material). Reclassification analyses were performed to assess the change in
89 risk after adding the PRS to the conventional model. Time-to-event continuous and categorical
90 net reclassification improvement (NRI) was calculated using the “nricens” package. The risk
91 categories or the categorical NRI were chosen based on the observed risk within the ASPREE
92 cohort and were set to <1.5%, 1.5 to 2.49% and $\geq 2.5\%$. Interaction effects between sex and
93 model covariables were examined. All analyses were performed using R version 3.6.1.²²

94 **Results**

95 Baseline characteristics

96 The median age of the 12,792 participants was 73.9 years (interquartile range 71.7, 77.3,
97 Table 1); 7,027 (54.9%) were female, 391 (3.1%) were current smokers and 1,186 (9.3%) had
98 diabetes. The PRS showed a normal distribution (Figure S3) and the mean value was -1.16
99 (SD 0.45). There was no relevant correlation of the PRS with other continuous variables within
100 the data set (Figure S4). During follow-up, 254 (2.0%) of subjects had incident CHD events
101 (169 in males, 85 in females). This included 226 incident cases of myocardial infarction and
102 50 cases of CHD death.

103 PRS for risk prediction

104 In the conventional model, all variables except systolic blood pressure and diabetes were
105 independent predictors of CHD events (Table 2). When the PRS was added as a continuous
106 variable to the model, it was found to be an independent predictor of outcome (Hazard ratio
107 [HR] 1.24 [95% Confidence Interval [CI] 1.08-1.42], $p=0.002$). Using PRS tertiles as a predictor,
108 CHD risk increased as the PRS category increased from the first to third tertile. When
109 compared to the first PRS tertile (low risk group) the second tertile had a HR for CHD risk of
110 1.48 (95%CI 1.04-2.09, $p=0.029$) and the third PRS tertile had a HR of 1.64 (95%CI 1.16-2.33,
111 $p=0.005$). Kaplan-Meier curves illustrated that individuals in the higher and middle PRS tertiles
112 had a higher incidence of CHD events compared with lower PRS tertile ($p=0.02$, Figure 1).

113 Evaluation of each predictor using receiver-operating-characteristics showed that sex (AUC
114 62.88%, 95%CI 59.58-66.17), HDL-cholesterol (AUC 61.56%, 95%CI 57.51-65.61), serum
115 creatinine (AUC 61.39%, 95%CI 57.53-65.24) and age (AUC 57.50%, 95%CI 52.98-62.05)
116 were the strongest predictors of incident CHD events (Figure 2). The PRS alone resulted in an
117 AUC of 55.72% (95%CI 51.74-59.72). The AUC for the conventional model was 70.53%
118 (95%CI 67.00-74.06) and significantly improved to 71.78% (95%CI 68.32-75.24) after adding
119 the PRS as a continuous variable ($p=0.019$, Table 3, Figure S5). The calibration plot showed
120 a good agreement between predicted and observed CHD events (Figure S6).

121 Reclassification

122 In reclassification analyses, the continuous NRI was 0.25 (95%CI 0.15-0.28), when the PRS
123 was added to the conventional model (Table S1). More individuals were to a higher risk
124 category (NRI+ 0.16, 95%CI 0.08-9.20), than downwards (NRI- 0.09, 95%CI 0.04-0.10). For
125 measurement of the categorical NRI, CHD risk categories of <1.5%, <2.5% and \geq 2.5% were
126 chosen based on the observed risk within ASPREE (Table S1, Table 3). Here, addition of the
127 PRS to the conventional model resulted in a categorical reclassification of 0.063 (95%CI 0.001-
128 0.129), with an upwards classification of 0.044 (95%CI of -0.007-0.105) and a downwards
129 classification of 0.019 (95%CI 0.003-0.032).

130 Subgroup analyses

131 When comparing males and females, we only observed minor differences in baseline
132 characteristics (Table S2). Adding the continuous PRS to the conventional model, it was an
133 independent predictor in males, but not in females (males HR 1.27 [95%CI 1.08-1.50], p=0.005
134 versus females HR 1.18 [95%CI 0.92-1.49], p=0.19, Table S4+5). The same finding was
135 observed when assessing the categorical PRS. The conventional model resulted in a lower
136 AUC in males compared to females (males AUC 66.58%, females AUC 70.07%), but the
137 incremental value of adding the PRS to the conventional model was greater in males compared
138 with females (males AUC 68.18%, females AUC 71.00%, Table S6).

139 In subgroup analyses by PRS tertile, baseline characteristics were similar for participants
140 within the highest compared to the lowest PRS tertile (Table S3). The conventional model
141 resulted in a lower AUC in individuals from the highest, compared to individuals from the lowest
142 PRS tertile (highest tertile AUC 73.21%, lowest tertile AUC 76.62%), but the incremental value
143 of addition of the PRS to the conventional model was similar in both groups (Table S7).

144 Results of sensitivity analyses after adding use of antihypertensive drugs, statins and genetic
145 ethnicity PCAs to the model are reported in the supplementary results (Tables S8+9).
146 Interaction effects between sex and model covariables were examined, but no interaction
147 between sex and PRS was found (HR 0.93, 95%CI 0.69-1.24, p=0.60; Table S10).

148 **Discussion**

149 In this study, we evaluated the prognostic value of a previously derived polygenic risk score
150 (metaGRS) to predict future CHD events in a population of healthy older individuals from the
151 ASPREE trial. We were able to demonstrate robust PRS performance in this older population
152 and can confirm that addition of the PRS to a conventional cardiovascular risk model improved
153 risk prediction (Figure 3). Our study suggests that the potential clinical utility of a PRS for CHD
154 risk prediction extends to older individuals aged 70 years and older, who comprise an important
155 high-risk group. Our study also represents an independent validation of a PRS recently derived
156 from the UK Biobank, in a well-characterized older population. Our findings add further support
157 to the growing body of evidence that supports the use of genetic information to improve CHD
158 risk prediction, and our results indicate that PRS predictive value extends to older individuals.
159 The metaGRS used in our study was derived from the UK Biobank population of around
160 500,000 British individuals, with mean age 56.5 years. The ASPREE population differs in
161 several aspects. Firstly, and most notably, the median age of ASPREE participants at
162 enrolment was 73.9 years, nearly 20 years older than the UK Biobank. Second, ASPREE is a
163 highly ascertained clinical trial population, in which participants met strict inclusion criteria, with
164 no history of CHD events at enrolment. Third, major CHD events in ASPREE were adjudicated
165 as part of a randomized trial but did not include coronary revascularization. Given these
166 important differences, it is noteworthy that the metaGRS still performed in a robust manner in
167 the older ASPREE population. Similar to previous studies^{5, 6}, our findings demonstrate a
168 polygenic model derived from the UK Biobank generalizes well to other cohorts of European
169 descent.

170 Cardiovascular disease accounts for a large proportion of deaths in older people. Accurate
171 identification of older individuals at increased risk for CHD is therefore clinically important,
172 particularly those not identified as high-risk by conventional risk factors. Due to a lack of
173 evidence in individuals aged 70 years and older, the value of adding genetic information for
174 CHD risk prediction in older people has not previously been tested robustly. Our study provides
175 the first evidence of its kind to suggest the predictive value and potential clinical utility of a PRS

176 for CHD extends to individuals aged 70 years and older, with comparable predictive
177 performance compared with younger population-based cohorts (refs). Importantly, we found
178 that the PRS alone (considered independently as a CHD risk factor) had similar discriminative
179 power compared to conventional cardiovascular risk factors used in routine practice. However,
180 in our analyses the AUC of sex, HDL-cholesterol, creatinine, non-HDL-cholesterol and age
181 were stronger discriminators, than the PRS alone. This empathizes their role as predictors in
182 an older population, alongside a genetic risk score. Nevertheless, it is noteworthy that the PRS
183 was found to predict CHD events independently of conventional risk factors, not showing
184 correlation with the nine conventional risk factors examined (Figure S4). These unique
185 properties of the genetic risk score (i.e. relatively strong predictive performance and
186 independent effect) help demonstrate its future clinical potential for CHD risk prediction.

187 Currently, the availability of PRS as a clinical tool for CHD prediction at large remains limited,
188 with unresolved questions related to cost-effectiveness and implementation. Furthermore,
189 some recent studies have provided conflicting results regarding the incremental value of
190 adding genetic information to conventional CHD risk factors in younger populations.^{7, 8} In the
191 future, individual genotyping will become more widely available and at lower cost, potentially
192 facilitating improved CHD event prediction and risk stratification. Here we show that genetic
193 risk is still highly relevant at older ages, and that a PRS for CHD still performs well and may
194 have potential clinical utility for preventive strategies in older people. However, further studies of
195 more phenotypically and ethnically diverse elderly populations are required.

196 Specific findings of our study warrant further discussion. First, we did not find diabetes to be
197 an independent predictor for CHD events, despite 9.3% of ASPREE participants having
198 diabetes at baseline. Other studies have reported the relevance of diabetes regarding CHD
199 risk in the elderly.¹⁰ This observation could be explained by the pre-selection of a healthy
200 ASPREE population, in whom the duration of diabetes might be shorter, compared to the
201 general population. A second notable finding of our study was that results were not confirmed
202 in subgroup analyses for females. This finding was likely due to limited power because the
203 majority of CHD events in ASPREE occurred in males. Further, we found no interaction effect

204 between sex and PRS, and other studies have reported similar performance for CHD polygenic
205 scores in both sexes.²³

206 Strengths of our study include a well-characterized, unique study population with incident
207 cardiovascular events clinically adjudicated as part of a randomized trial. No other large clinical
208 trial has recruited this number of healthy older individuals without a prior history of CHD events,
209 with genotyping. All ASPREE participants received medical assessments by general
210 practitioners at enrolment, to confirm eligibility for the trial, and to rule out previous diagnoses
211 of CHD events. This provided confidence that participants were CHD event-free at enrolment,
212 to examine the value of PRS in the context of primary prevention in the elderly. A range of
213 conventional risk factor variables were also available in ASPREE, to examine alongside
214 polygenic risk.

215 Limitations of our study include a rather short follow-up period (average 4.6 years per
216 participant) contributing to the relatively small number of CHD events. Continued follow-up will
217 provide more power for future analyses. We also acknowledge the healthy-volunteer effect
218 (ascertained bias) of the ASPREE trial population. ASPREE did not collect information related
219 to revascularization, which is an important CHD endpoint used in metaGRS derivation dataset.
220 Our findings may not be generalizable to other ethnicities or more diverse populations.

221 In conclusion, we report a potential clinical benefit of using a PRS for improved risk prediction
222 of CHD events in older people. Our study provides evidence that use of PRS for CHD
223 prediction is robust across a diverse range of populations and ages, including individuals aged
224 70 years and older.

References

- 225 1. Marenberg ME, Risch N, Berkman LF, Floderus B, de Faire U. Genetic susceptibility
226 to death from coronary heart disease in a study of twins. *N Engl J Med* 1994;**330**(15):1041-6.
- 227 2. Lloyd-Jones DM, Nam BH, D'Agostino RB, Sr., Levy D, Murabito JM, Wang TJ,
228 Wilson PW, O'Donnell CJ. Parental cardiovascular disease as a risk factor for cardiovascular
229 disease in middle-aged adults: a prospective study of parents and offspring. *JAMA*
230 2004;**291**(18):2204-11.
- 231 3. Khera AV, Emdin CA, Drake I, Natarajan P, Bick AG, Cook NR, Chasman DI, Baber
232 U, Mehran R, Rader DJ, Fuster V, Boerwinkle E, Melander O, Orho-Melander M, Ridker PM,
233 Kathiresan S. Genetic Risk, Adherence to a Healthy Lifestyle, and Coronary Disease. *N Engl*
234 *J Med* 2016;**375**(24):2349-2358.
- 235 4. Inouye M, Abraham G, Nelson CP, Wood AM, Sweeting MJ, Dudbridge F, Lai FY,
236 Kaptoge S, Brozynska M, Wang T, Ye S, Webb TR, Rutter MK, Tzoulaki I, Patel RS, Loos
237 RJF, Keavney B, Hemingway H, Thompson J, Watkins H, Deloukas P, Di Angelantonio E,
238 Butterworth AS, Danesh J, Samani NJ, Group UKBCCCW. Genomic Risk Prediction of
239 Coronary Artery Disease in 480,000 Adults: Implications for Primary Prevention. *J Am Coll*
240 *Cardiol* 2018;**72**(16):1883-1893.
- 241 5. Wunnemann F, Sin Lo K, Langford-Avelar A, Busseuil D, Dube MP, Tardif JC, Lettre
242 G. Validation of Genome-Wide Polygenic Risk Scores for Coronary Artery Disease in French
243 Canadians. *Circ Genom Precis Med* 2019;**12**(6):e002481.
- 244 6. Dikilitas O, Schaid DJ, Kosel ML, Carroll RJ, Chute CG, Denny JA, Fedotov A, Feng
245 Q, Hakonarson H, Jarvik GP, Lee MTM, Pacheco JA, Rowley R, Sleiman PM, Stein CM,
246 Sturm AC, Wei WQ, Wiesner GL, Williams MS, Zhang Y, Manolio TA, Kullo IJ. Predictive
247 Utility of Polygenic Risk Scores for Coronary Heart Disease in Three Major Racial and Ethnic
248 Groups. *Am J Hum Genet* 2020;**106**(5):707-716.
- 249 7. Elliott J, Bodinier B, Bond TA, Chadeau-Hyam M, Evangelou E, Moons KGM,
250 Dehghan A, Muller DC, Elliott P, Tzoulaki I. Predictive Accuracy of a Polygenic Risk Score-
251 Enhanced Prediction Model vs a Clinical Risk Score for Coronary Artery Disease. *JAMA*
252 2020;**323**(7):636-645.
- 253 8. Mosley JD, Gupta DK, Tan J, Yao J, Wells QS, Shaffer CM, Kundu S, Robinson-
254 Cohen C, Psaty BM, Rich SS, Post WS, Guo X, Rotter JI, Roden DM, Gerszten RE, Wang
255 TJ. Predictive Accuracy of a Polygenic Risk Score Compared With a Clinical Risk Score for
256 Incident Coronary Heart Disease. *JAMA* 2020;**323**(7):627-635.
- 257 9. Aragam KG, Dobbyn A, Judy R, Chaffin M, Chaudhary K, Hindy G, Cagan A,
258 Finneran P, Weng LC, Loos RJF, Nadkarni G, Cho JH, Kember RL, Baras A, Reid J, Overton
259 J, Philippakis A, Ellinor PT, Weiss ST, Rader DJ, Lubitz SA, Smoller JW, Karlson EW, Khera
260 AV, Kathiresan S, Do R, Damrauer SM, Natarajan P. Limitations of Contemporary Guidelines

- 261 for Managing Patients at High Genetic Risk of Coronary Artery Disease. *J Am Coll Cardiol*
262 2020;**75**(22):2769-2780.
- 263 10. Dalton JE, Rothberg MB, Dawson NV, Krieger NI, Zidar DA, Perzynski AT. Failure of
264 Traditional Risk Factors to Adequately Predict Cardiovascular Events in Older Populations. *J*
265 *Am Geriatr Soc* 2020;**68**(4):754-761.
- 266 11. Conroy RM, Pyorala K, Fitzgerald AP, Sans S, Menotti A, De Backer G, De Bacquer
267 D, Ducimetiere P, Jousilahti P, Keil U, Njolstad I, Oganov RG, Thomsen T, Tunstall-Pedoe H,
268 Tverdal A, Wedel H, Whincup P, Wilhelmsen L, Graham IM, group Sp. Estimation of ten-year
269 risk of fatal cardiovascular disease in Europe: the SCORE project. *Eur Heart J*
270 2003;**24**(11):987-1003.
- 271 12. Piepoli MF, Hoes AW, Agewall S, Albus C, Brotons C, Catapano AL, Cooney MT,
272 Corra U, Cosyns B, Deaton C, Graham I, Hall MS, Hobbs FD, Locher ML, Lollgen H,
273 Marques-Vidal P, Perk J, Prescott E, Redon J, Richter DJ, Sattar N, Smulders Y, Tiberi M,
274 van der Worp HB, van Dis I, Verschuren WM, Authors/Task Force M. 2016 European
275 Guidelines on cardiovascular disease prevention in clinical practice: The Sixth Joint Task
276 Force of the European Society of Cardiology and Other Societies on Cardiovascular Disease
277 Prevention in Clinical Practice (constituted by representatives of 10 societies and by invited
278 experts)Developed with the special contribution of the European Association for
279 Cardiovascular Prevention & Rehabilitation (EACPR). *Eur Heart J* 2016;**37**(29):2315-81.
- 280 13. Group AI. Study design of ASPirin in Reducing Events in the Elderly (ASPREE): a
281 randomized, controlled trial. *Contemp Clin Trials* 2013;**36**(2):555-64.
- 282 14. McNeil JJ, Wolfe R, Woods RL, Tonkin AM, Donnan GA, Nelson MR, Reid CM,
283 Lockery JE, Kirpach B, Storey E, Shah RC, Williamson JD, Margolis KL, Ernst ME,
284 Abhayaratna WP, Stocks N, Fitzgerald SM, Orchard SG, Trevaks RE, Beilin LJ, Johnston CI,
285 Ryan J, Radziszewska B, Jelinek M, Malik M, Eaton CB, Brauer D, Cloud G, Wood EM,
286 Mahady SE, Satterfield S, Grimm R, Murray AM, Group AI. Effect of Aspirin on
287 Cardiovascular Events and Bleeding in the Healthy Elderly. *N Engl J Med*
288 2018;**379**(16):1509-1518.
- 289 15. McNeil JJ, Woods RL, Nelson MR, Reid CM, Kirpach B, Wolfe R, Storey E, Shah RC,
290 Lockery JE, Tonkin AM, Newman AB, Williamson JD, Margolis KL, Ernst ME, Abhayaratna
291 WP, Stocks N, Fitzgerald SM, Orchard SG, Trevaks RE, Beilin LJ, Donnan GA, Gibbs P,
292 Johnston CI, Ryan J, Radziszewska B, Grimm R, Murray AM, Group AI. Effect of Aspirin on
293 Disability-free Survival in the Healthy Elderly. *N Engl J Med* 2018;**379**(16):1499-1508.
- 294 16. Manjunath G, Tighiouart H, Coresh J, Macleod B, Salem DN, Griffith JL, Levey AS,
295 Sarnak MJ. Level of kidney function as a risk factor for cardiovascular outcomes in the
296 elderly. *Kidney Int* 2003;**63**(3):1121-9.

- 297 17. Go AS, Chertow GM, Fan D, McCulloch CE, Hsu CY. Chronic kidney disease and the
298 risks of death, cardiovascular events, and hospitalization. *N Engl J Med* 2004;**351**(13):1296-
299 305.
- 300 18. Genomes Project C, Auton A, Brooks LD, Durbin RM, Garrison EP, Kang HM, Korbel
301 JO, Marchini JL, McCarthy S, McVean GA, Abecasis GR. A global reference for human
302 genetic variation. *Nature* 2015;**526**(7571):68-74.
- 303 19. Das S, Forer L, Schonherr S, Sidore C, Locke AE, Kwong A, Vrieze SI, Chew EY,
304 Levy S, McGue M, Schlessinger D, Stambolian D, Loh PR, Iacono WG, Swaroop A, Scott LJ,
305 Cucca F, Kronenberg F, Boehnke M, Abecasis GR, Fuchsberger C. Next-generation
306 genotype imputation service and methods. *Nat Genet* 2016;**48**(10):1284-1287.
- 307 20. Lambert SA, Gil L, Jupp S, Ritchie SC, Xu Y, Buniello A, Abraham G, Chapman M,
308 Parkinson H, Danesh J, MacArthur JAL, Inouye M. The Polygenic Score Catalog: an open
309 database for reproducibility and systematic evaluation. Preprint at medRxiv 2020.
- 310 21. Chang CC, Chow CC, Tellier LC, Vattikuti S, Purcell SM, Lee JJ. Second-generation
311 PLINK: rising to the challenge of larger and richer datasets. *Gigascience* 2015;**4**:7.
- 312 22. R-Core-Team. R: A language and environment for statistical computing. In.
313 Foundation for Statistical Computing, Vienna, Austria; 2013.
- 314 23. Lu T, Forgetta V, Yu OHY, Mokry L, Gregory M, Thanassoulis G, Greenwood CMT,
315 Richards JB. Polygenic risk for coronary heart disease acts through atherosclerosis in type 2
316 diabetes. *Cardiovasc Diabetol* 2020;**19**(1):12.

Tables and Figures

Table 1: Baseline characteristics

	Overall Population
Number of participants	12,792
Age (median (IQR))	73.9 (71.7, 77.3)
Age categories (%)	
70-74	7,698/12,792 (60.2)
75-79	3,271/12,792 (25.6)
80-84	1,414/12,792 (11.1)
>85	409/12,792 (3.2)
Female (%)	7,027/12,792 (54.9)
Current Smoker (%)	391/12,792 (3.1)
Systolic Blood Pressure (mean (SD))	139.46 (16.27)
Diastolic Blood Pressure (mean (SD))	77.17 (9.97)
Diabetes (%)	1,186/12,792 (9.3)
Body Mass Index (mean (SD))	27.97 (4.55)
HDL-cholesterol in mmol/L (mean (SD))	1.59 (0.46)
Non-HDL-cholesterol in mmol/L (mean (SD))	3.69 (0.93)
Fasting Glucose in mg/dL (mean (SD))	98.29 (17.12)
Creatinine in mg/dL (mean (SD))	0.90 (0.22)
Family history of MI (%)	340/12,792 (2.7)
Polygenic Risk Score (mean (SD))	-1.16 (0.45)

Missing values for continuous variables were: 341 for creatinine, 331 for non-HDL, 330 for HDL, 250 for glucose and 56 for body mass index. Abbreviations: IQR = inter quartile range, SD = standard deviation, HDL = high density lipoprotein, MI = myocardial infarction.

Table 2: Hazard ratios for the conventional model, conventional model + continuous PRS and conventional model + categorical PRS

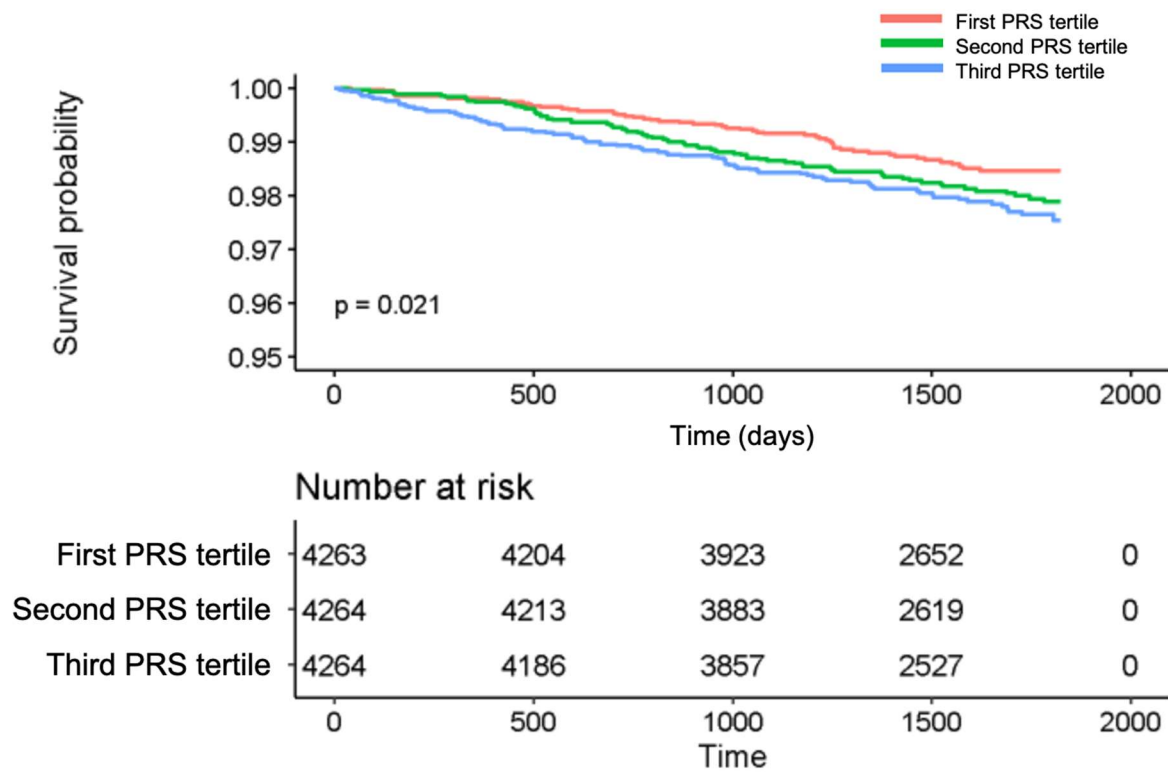
	Conventional model			Conventional model + continuous PRS			Conventional model + categorical PRS		
	HR	95%CI	p-value	HR	95%CI	p-value	HR	95%CI	p-value
Age	1.09	(1.06-1.12)	<0.001	1.09	(1.06-1.12)	<0.001	1.09	(1.06-1.12)	<0.001
Female Sex	0.48	(0.34-0.67)	<0.001	0.46	(0.33-0.65)	<0.001	0.47	(0.34-0.66)	<0.001
Current Smoking	2.00	(1.09-3.68)	0.025	2.02	(1.10-3.71)	0.024	2.01	(1.09-3.69)	0.025
SBP per 10 mmHg increase	1.04	(0.96-1.13)	0.34	1.04	(0.96-1.13)	0.37	1.04	(0.96-1.13)	0.33
Non-HDL-cholesterol	1.35	(1.17-1.56)	<0.001	1.35	(1.17-1.55)	<0.001	1.34	(1.17-1.55)	<0.001
HDL-cholesterol	0.65	(0.44-0.95)	0.026	0.65	(0.44-0.95)	0.027	0.64	(0.44-0.94)	0.024
Diabetes	0.82	(0.49-1.38)	0.45	0.81	(0.48-1.36)	0.42	0.81	(0.48-1.36)	0.42
Creatinine	1.83	(1.03-3.26)	0.040	1.81	(1.01-3.23)	0.045	1.82	(1.02-3.24)	0.043
PRS (continuous per SD)				1.24	(1.08-1.42)	0.002			
PRS 1st Tertile							1.00	Reference	
PRS 2nd Tertile							1.48	(1.04-2.09)	0.029
PRS 3rd Tertile							1.64	(1.16-2.33)	0.005

Abbreviations: SBP = systolic blood pressure, HDL = high density lipoprotein, PRS = polygenic risk score, HR = hazard ratio, CI = confidence interval.

Table 3: Categorical net reclassification improvement table after adding PRS to the conventional model to predict the risk of a 5-year CHD event.

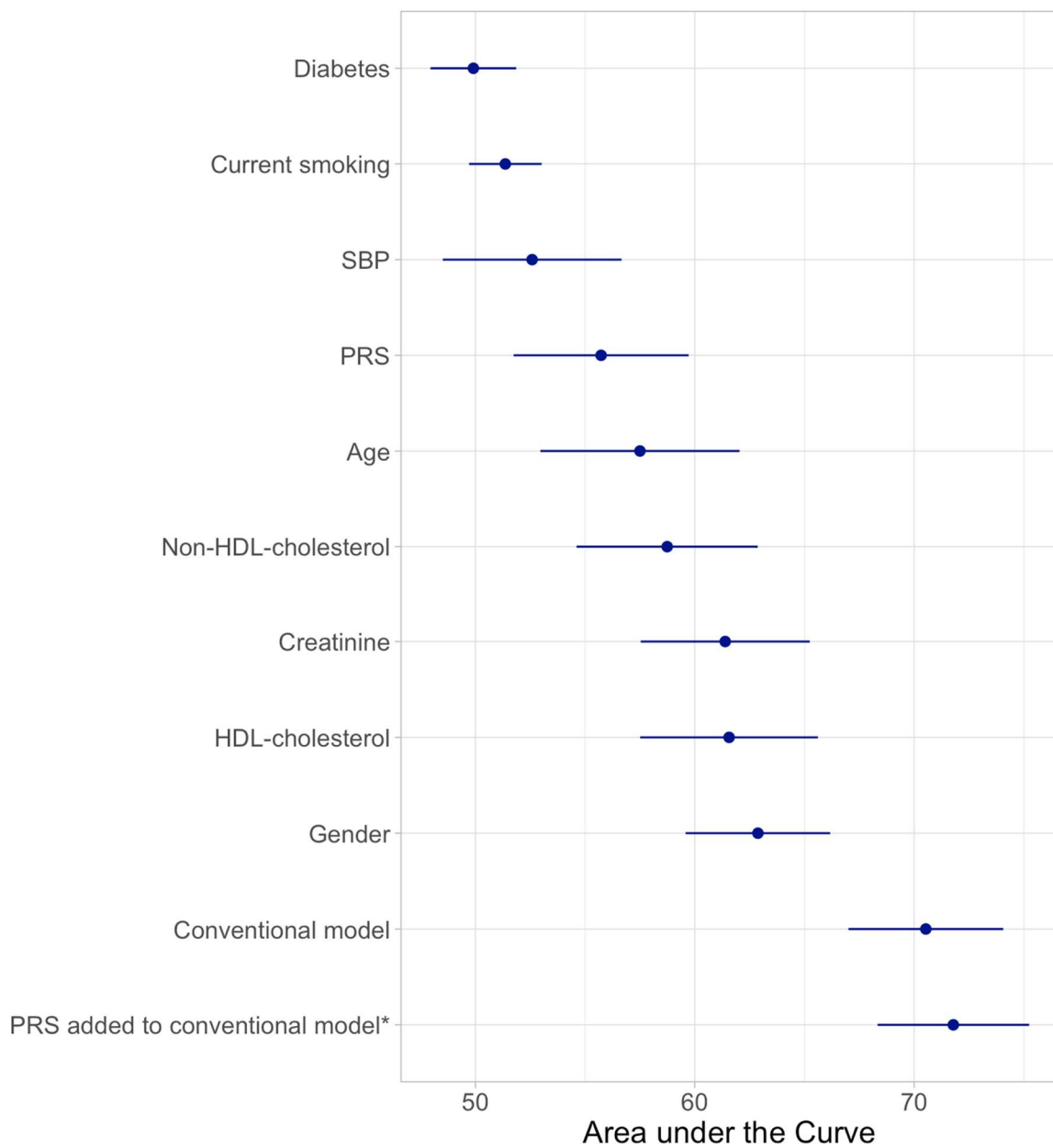
		Standard Model + Polygenic Risk Score			
Standard Model		< 1.5%	1.5 to 2.49%	≥ 2.5%	Total No. (%) of participants
CHD events	< 1.5%	37	9	0	46 (22)
	1.5 to 2.49%	6	35	12	53 (25)
	≥ 2.5%	0	8	103	111 (53)
	Total No. (%) of participants	43 (20)	52 (25)	115 (55)	210 (100)
CHD non-events	< 1.5%	2248	157	2	2407 (49)
	1.5 to 2.49%	204	854	149	1207 (25)
	≥ 2.5%	1	187	1114	1302 (26)
	Total No. (%) of participants	2453 (50)	1198 (24)	1265 (26)	4916 (100)

Figure 1: Kaplan-Meier curve for CHD events according to PRS tertiles



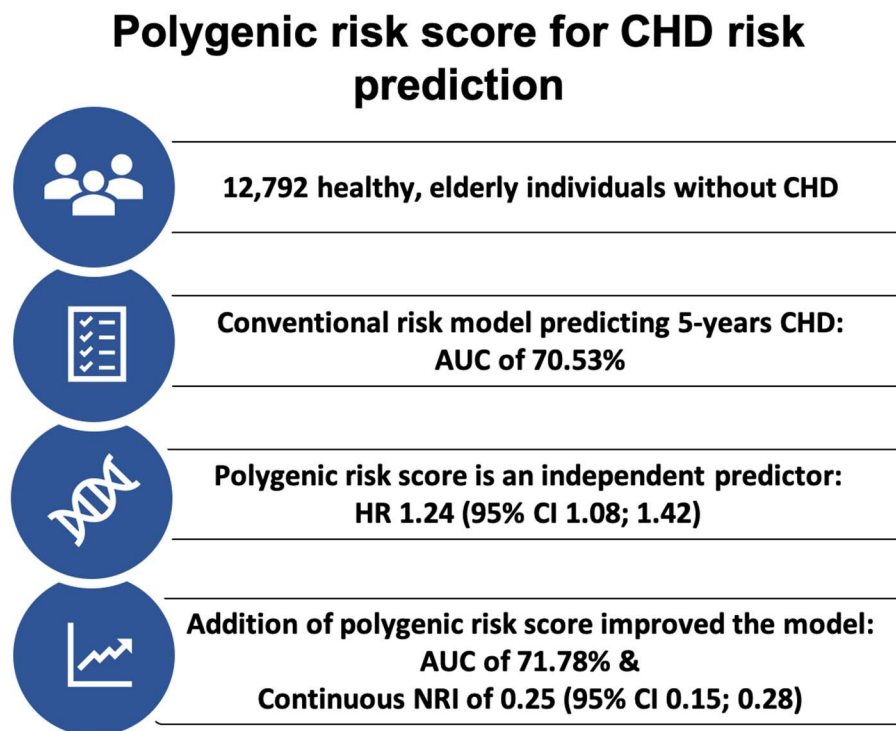
The figure provides the probability of a CHD event according to tertiles of the PRS, based on Kaplan-Meier estimates, and the individuals at risk.

Figure 2: AUC for each predictor, the conventional model and the PRS added to the conventional model



*p-value compared the Conventional Model = 0.01899934. Abbreviations: SBP = systolic blood pressure, HDL = high density lipoprotein, PRS = polygenic risk score, AUC = area under the curve, CI = confidence interval.

Figure 3: Central figure summarizing the main study findings



We evaluated the prognostic accuracy of a previously derived polygenic risk score (metaGRS) to predict 5 years CHD events in a population of healthy elderly individuals.

Abbreviations: CHD = coronary heart disease, AUC = area under the curve, HR = hazard ratio, CI = confidence interval.