

Testing and Vaccination to Reduce the Impact of COVID-19 in Nursing Homes: An Agent-Based Approach

Jose Pablo Gómez-Vázquez¹, Yury García², Alec J. Schmidt², Beatriz Martínez-López¹, and Miriam Nuño^{2,*}

¹Center for Animal Disease Modeling and Surveillance, University of California Davis, CA, USA. Email: jngo@ucdavis.edu

²Department of Public Health Sciences, University of California Davis, CA, USA.

*Corresponding author: Miriam Nuño, PhD., email: mnuño@ucdavis.edu, One Shields Avenue, Med Sci 1C (room 125), Davis Office: 530.752.1409, Sacramento Office: 916.734.0962, 2335 Stockton Blvd, North Addition Office Building (room 6015)

Abstract

Background: Efforts to protect residents in nursing homes involve non-pharmaceutical interventions, testing, and vaccine. We sought to quantify the effect of testing and vaccine strategies on the attack rate, length of the epidemic, and hospitalization.

Methods: We developed an agent-based model to simulate the dynamics of SARS-CoV-2 transmission in a nursing home with resident and staff agents. Interactions between 172 residents and 170 staff were assumed based on data from a nursing home in Los Angeles, CA. We simulated scenarios assuming different levels of non-pharmaceutical interventions, testing frequencies, and vaccine efficacy to block transmission.

Results: Under the hypothetical scenario of widespread SARS-CoV-2 in the community, 3-day testing frequency minimized the attack rate and the time to eradicate an outbreak. Prioritization of vaccine among staff or staff and residents minimized the cumulative number of infections and hospitalization, particularly in the scenario of high probability of an introduction. Reducing the probability of a virus introduction reduced the demand on testing and vaccine to reduce infections and hospitalizations.

Conclusions: Improving frequency of testing from 7-days to 3-days minimized the number of infections and hospitalizations, despite widespread community transmission. Vaccine prioritization of staff provides the best protection strategy, despite high risk of a virus introduction.

Keywords: Nursing Homes, Testing, Vaccine, COVID-19, Agent-Based Model.

30 **Introduction**

31 COVID-19 has highlighted many inadequacies in the American healthcare system. Elderly and frail
32 residents of long-term care facilities (LTCFs) have experienced a disproportionate burden of infection
33 and death. Approximately 5% of all US cases have occurred in LTCFs, yet deaths related to COVID-19
34 in these facilities account for 34% of all US deaths as of February 12, 2021, according to the New York
35 Times [1]. Nationwide, there are about 44,736 LTCFs in the United States, 15,116 of which are nursing
36 homes. Together these facilities encompass more than 1.2 million staff and 2.1 million residents based
37 on 2015-2016 estimates [2].

38
39 Guidance on the prevention and mitigation of COVID-19 in LTCFs was offered by many oversight
40 groups, including the Centers for Disease Control and Prevention (CDC) and the Center for Medicare
41 and Medicaid Services (CMS). Substantial numbers of transmission events from symptom-free individuals
42 made it clear that universal testing, regardless of symptoms, was a critical component of a robust
43 prevention program [3–5]. Testing frequency was widely debated, as LTCFs had to balance the obvious
44 need with the high cost and low availability of testing, especially early in the pandemic [5–7]. Vaccines
45 provide an incredible tool for preventing COVID-19 outbreaks in LTCFs, but they are not a magic
46 solution, nor will they be distributed into an environment that is wholly prepared to implement new
47 protective measures.

48
49 Nursing home residents are a priority group for vaccination, as are health care workers. The CDC
50 launched the Pharmacy Partnerships for Long-Term Care Program in an effort to provide on-site vaccination
51 to residents and staff members in LTCFs [8]. Despite deployment of vaccines in LTCFs appearing
52 successful thus far, there is a growing concern that insufficient levels of vaccine coverage will be reached.
53 As of the end of January 2021, median first dose rates among LTCF residents is 77.8%, but only a
54 median of 37.5% of staff have received at least their first dose [9]. It is unclear at this time whether the
55 lower vaccination rates among staff is a result of prioritization of residents, lack of recording alternative
56 sources of vaccination, or staff choice; however, a survey of nursing home staff conducted in the state
57 of Indiana (November 2020) found that 45% of respondents were willing to receive a COVID-19 vaccine
58 immediately once available, and an additional 24% would consider it in the future [10]. While visitors are
59 disallowed and residents only interact directly with a small number of other people, staff are the primary
60 vector for viral introduction [11,12]; therefore, low rates of vaccine uptake among staff should be of great
61 concern from the perspective of preventing an outbreak. Additionally, there is limited evidence about the
62 ability of vaccines to reduce asymptomatic transmission. Preliminary data from the UK suggests a 49.3%
63 reduction in infections from an asymptomatic source [13]. Recent evidence of the circulation of more
64 transmissible SARS-CoV-2 variants also raises concerns about the course of this pandemic, particularly

65 as less than 7% of the US population have received the full vaccine dosage [14].

66

67 Given the continued challenge of implementing robust protective measures in LTCFs, the bevy of
68 unknowns around vaccine deployment, the uncertainty involved with new circulating strains, and the
69 impending easing of co-recreation and visitor restrictions as states ease recommendations, we sought to
70 quantify the effect of testing rates and differing vaccination strategies on morbidity and mortality in a
71 long term care setting, using a nursing home in Los Angeles, CA as the foundation for an agent-based
72 model (ABM). Our study assumes the continued presence of non-pharmaceutical interventions (NPIs)
73 such as mask mandates for staff and universal testing, and varies the risk of introduction by staff. The
74 end results is a model that can be adapted/modified to study the effects of these interventions in varied
75 nursing home settings. Such modelling approaches can provide valuable insight into the design and
76 deployment of combined vaccine and surveillance interventions before primary prospective research can
77 be implemented [12].

78

79 **Methods**

80 **Model structure**

81 We developed a stochastic agent-based model to simulate the spread of SARS-CoV-2 in an LTCF, based
82 on the floor plan and occupancy of a nursing home in Los Angeles County, California with 172 residents
83 and 170 staff [Figure 1]. The simplified floor map shows the location of bedrooms with a capacity
84 of 3 residents, 5 quarantine rooms reserved for residents with frequent outside traffic and/or capacity
85 to quarantine exposed residents, recreation areas which are currently off limits to resident and staff
86 interactions, and rooms for staff.

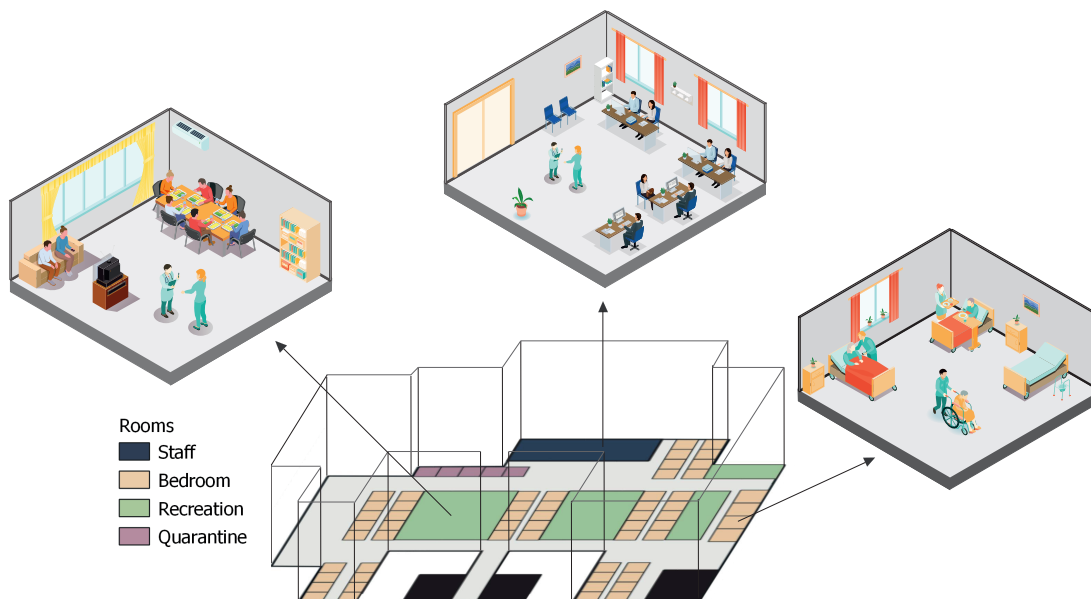


Figure 1: Case study of a nursing home in Los Angeles, CA.

87 Agents in the model include residents and staff, with the natural history of COVID-19 captured through
88 seven epidemiological classes (Figure S1). The model assumes that residents are not replaced with new
89 susceptible agents, and staff with confirmed exposure to the virus are replaced by new staff confirmed
90 negative for SARS-CoV-2 during the period of simulation. Recovered people gain immunity to reinfection
91 lasting 120 days, and the latency period is sampled from a logarithmic normal distribution [15]. Parameters
92 and sources are described in Table 1.

Table 1: Parameter Descriptions, Baseline Values, and References.

Description	Baseline Value	Ref.
Average time a person remains in the non-infectious latency state (α)	<i>lognormal</i> (7, 3) ^b	[15]
Proportion of asymptomatic people (f)	0.40	[16]
Average recovery time (γ_1)	15 days	[17]
Proportion of hospitalized people (σ_1)	0.23	[18, 19]
Median number of days from symptom onset to hospitalization (γ_2)	4 (1, 9) days	[20]
Median number of days of hospitalization (γ_3)	6 (3, 10) days	[20]
Percent that die among those hospitalized. (σ_2)	11.8%	[21]
Shedding probability	0.38	[a]
Infection probability	0.38	[a]
Introduction probability	0.1	[a]
Assumptions for the scenarios		
Percentage of staff using PPE	90%	[a]
Percentage of residents using PPE	75%	[a]
PPE Effect (OR_{pi})	0.1467	[a] [22]
Test detection probability	80%	[a]
Percentage of Staff tested	90%	[a]
Percentage of Resident tested	33.3%	[a]
Frequency of testing	<i>Weekly</i>	[a]
Vaccine effect (OR_v)	0.0493	[a] [23]
Vaccine immunity duration	120 days	[a]
Distribution of the staff agent characteristics		
CN Contacts per hour	<i>Multinom</i> $\sim (X_0 = 0.7, X_1 = 0.3)$	
RN Contacts per hour	<i>Multinom</i> $\sim (X_0 = 0.25, X_1 = 0.75)$	
LPN Contacts per hour	<i>Multinom</i> $\sim (X_0 = 0.15, X_2 = 0.2, X_3 = 0.25, X_4 = 0.2, X_5 = 0.2)$	
Work Schedule	<i>Multinom</i> $\sim (X_{morning} = 0.4, X_{night} = 0.2)$	
Staff type	<i>Multinom</i> $\sim (X_{CN} = 0.6, X_{RN} = 0.15, X_{LPN} = 0.15)$	

^aExplored via sensitivity analysis, ^bfitted to a distribution from data and truncated to a range of plausible values

93 Disease dynamics

94 The transmission of the virus is based on the probability of contact between susceptible people and those
95 who are in presymptomatic, asymptomatic, or symptomatic states. Each infectious state has the same
96 probability of infecting others on contact. Due to default preventive testing and isolation measures,
97 only I_a and I_s agents that have not been detected and isolated may contribute to new infections. A
98 newly-infected individual enters a latency period sampled from a lognormal distribution with a mean
99 of 7 days [15]. After that time, 40% of people remain asymptomatic [16] until recovery. For those who
100 develop symptoms, 23% [18, 19] require hospitalization. The average number of days from the onset of
101 symptoms to hospitalization is 4 days and a person stays in the hospital for an average of 6 days [20].
102 Mortality rate was set at 11.8% [21] for hospitalized agents. The average recovery time for asymptomatic
103 agents or those who never required hospitalization is 15 days [17], during which they remain infectious.
104 We assumed that recovery from a primary infection provided adequate immunity for the remainder of
105 the simulation.

106

107 **Staff and resident interactions**

108 Agents in the model include residents and staff only, consistent with the full visitor restrictions. Three
109 residents are assigned to a single room. Five rooms are designated for quarantine/isolation of infected
110 patients or for residents who require outside specialty care, such as dialysis. Residents only interact with
111 two other residents in the same room and with staff, who can be one of three types: Certified Nursing
112 Assistant (CNA), Registered Nurse (RN), and Licensed Practical Nurse (LPN). Since meals are taken in
113 rooms and use of communal space is restricted, residents do not currently interact with residents outside
114 assigned rooms.

115 Each type of staff has different contact patterns with residents throughout the day. These contact rates
116 are operationalized as contact probabilities defined from a multinomial distribution where each hour a
117 CNA has a 0.7 chance to have 0 contacts and 0.3 chance to have 1 contact with a resident, a LPN has a
118 0.15 chance of having 0 contacts, 0.2 of two constants, 0.25 chance of having 3 contacts, and so on (Table
119 1). Contact probability parameters were estimated from staff hour-per-resident-day (HRD) data from
120 the CMS Nursing Home Compare data set. We assumed no difference in probability of viral introduction
121 by staff type. Staff are assigned to one of three different work schedules: 40% work in the morning (7am
122 -3pm), 40% in the afternoon (3-11 pm), and 20% work overnight. They spend on average 8 hours inside
123 the nursing home and the rest of the time in the community. Both scheduled time and type of staff are
124 sampled from a multinomial distribution to reflect the distribution in our reference nursing home (Table
125 1).

126

127 **COVID-19 transmission in the community**

128 Though there is large variability on the impact of COVID-19 in these facilities, tied to historic variability
129 in testing capacity and PPE availability and adherence, the most immediate risk of a COVID-19 outbreak
130 in a nursing home is the level of community transmission of SARS-CoV-2. Since we assumed that visitors
131 are disallowed completely, residents' risk for primary exposure is contact through staff who acquired an
132 infection from the wider community. A critical factor that our model aimed to study was to assess the
133 impact of the probability of viral introduction from the community on the predicted size of internal
134 outbreaks. Each scenario we investigated was simulated across three different probabilities of a staff
135 member introducing the infection: low (5% per day), medium (10% per day), and high (15% per day).
136 These are expressed as 'introduction probability', which is set to 0.1 for the baseline scenario 1.

137

138 **Interventions**

139 We parameterized interventions with variable impacts on the transmission of SARS-CoV-2: PPE use
140 and misuse, regular diagnostic testing, and vaccinations. We considered scenarios where staff were tested

141 every 7 days (baseline), 5 days, and 3 days. Testing of residents in all scenarios assume that one resident
142 per room is tested weekly, systematically cycling through the each resident every three weeks. Reduction
143 in transmission probability from PPE use and vaccination were applied by modifying the shedding and
144 infection probability parameters (Table S1). Vaccine efficacy was translated into odds ratios of infection
145 given exposure from the Pfizer and Moderna phase 3 clinical trial results. For brand- and age-agnostic
146 scenarios, including the baseline scenario, the crude overall odds ratio was set to 0.0493. In scenarios
147 where vaccine brand and recipient age were taken into account, the efficacy of the Moderna vaccine after
148 the second dose was 95.6% (OR 0.0441) for individuals under 65 years old and 86.4% (OR 0.1357) for
149 65 and older [23]. The efficacy of the Pfizer vaccine for individuals under 65 was roughly equivalent to
150 Moderna (OR 0.434), but was 94.7% (OR 0.0619 for individuals 65 years and older [24]. For ease of
151 implementation, residents were considered 65 and older, and staff were considered under 65. The vaccine
152 odds ratio has a direct impact on transmission probabilities and reflects the upper bounds for vaccine
153 efficacy according to Equation 1. Let p_t be the probability of a transmission event:

$$p_t = \frac{e^{\ln(OR_\omega X_\omega) + \ln(OR_\pi X_\pi) + \ln(OR_\nu X_\nu)}}{1 + e^{\ln(OR_\omega X_\omega) + \ln(OR_\pi X_\pi) + \ln(OR_\nu X_\nu)}} \quad (1)$$

154 where the odds ratio ω (OR_ω) represents the global baseline transmission probability of all agents, the
155 odds ratio π (OR_π) represents the transmission reduction from the presence or absence of PPE, and the
156 odds ratio ν (OR_ν) corresponds to the effect of vaccine status on transmission. Probability p_t is computed
157 for all agents at each time step in order to reflect different probabilities of transmission based on the
158 interventions each individual received. For scenarios where a vaccine was implemented, we specified the
159 proportion of residents and staff that received a vaccine and a fixed time interval of 21 days between the
160 first and second dose, with a 60% efficacy after the first dose but before the second.

161

162 Model Scenarios

163 The baseline scenario assumed current CDC infection prevention and control recommendations for
164 nursing homes, including visitor restrictions, daily symptom screening of residents and staff, use of
165 face masks, and weekly testing of staff. We incorporated weekly cyclic testing of one of three residents
166 per room, with alternating residents being tested each week. When a resident tested positive, they
167 were isolated and the other residents from the same room were tested. Staff who tested positive were
168 'isolated' (removed from the simulation, as if on paid leave) and replaced with new staff who tested
169 negative. Parameters assumed for the baseline scenario are described on Table 1. We simulated a set of
170 scenarios based on staff testing frequency, prioritization of residents or staff for vaccination, and vaccine
171 brand. In each scenario we systematically changed one of these approaches while holding the others at
172 baseline values. Outcomes were estimates of the length of the outbreak, total number of infections (and

173 attack rate), hospitalizations, and deaths across three rates of community transmission (low, medium,
174 and high).

175

176 **Model implementation**

177 The model was implemented in GAMA 1.8.1 [25]. Code for reproducing this study is available at
178 https://github.com/jpablo91/NH_COVID. Each scenario was simulated 200 times, and the median
179 and 95% confidence intervals for each outcome were reported. For each set of simulations, we used the
180 same seed to conduct sensitivity analysis and make comparisons between scenarios. The model was
181 calibrated with data on confirmed COVID-19 cases reported between May 24, 2020 and February 14,
182 2021 in California nursing homes with similar resident census, extracted from the Centers for Medicare
183 Medicaid Services (CMS) [26]. We considered a good fit to be have high R^2 and Pearson's R estimates
184 between the observed and model-predicted cumulative number of confirmed cases.

185

186 **Results**

187 **Baseline Scenario**

188 In the baseline scenario we assumed PPE mandates, weekly testing, and no vaccination. Baseline attack
189 rate was 0.17 (95% CI: 0.01, 0.39) and a median time to eradication of 28 days (Table 2, Figure 2).
190 With the implementation of the vaccine and under the scenario of a high probability of introduction, the
191 attack rate goes down to 0.02 and the time to the eradication of an outbreak was 14 days. (Figure 2,
192 Suppl. Table 2).

193

194 **Testing and Vaccine Interventions**

195 The implementation of frequent testing, particularly every 3-days reduced the attack rate by half and
196 allowed containment of the outbreak within 9 days, despite high probability of virus introduction.
197 Estimates and 95% confidence intervals illustrated in Figure 3 are provided in Supplemental Table 2.
198 When vaccine was prioritized among staff, residents, or both, the attack did not seem to differ except
199 when the introduction probability of was high, in which case the simulated median attack rate was 0.02
200 when staff were prioritized compared to 0.03 if residents were prioritized or no prioritization was present.
201 Assuming a low probability of introduction, no prioritization provided the best opportunity to control
202 an outbreak, leading to a median of 9 days (95% CI: 7-26) until eradication. We evaluate a vaccine's
203 ability to block transmission for scenarios of vaccine efficacy, staff and residents had the same efficacy,
204 and residents had reduced efficacy compared to staff. We found that the probability of virus introduction
205 was the most significant factor in determining the attack rate and days to the eradication of an outbreak.
206 The attack rate doubled to 0.02 with high transmission probability and the time to the eradication of
207 an outbreak was optimal only for low transmission. In all scenarios of low or moderate probability of

208 transmission, none of the residents were infected.

209

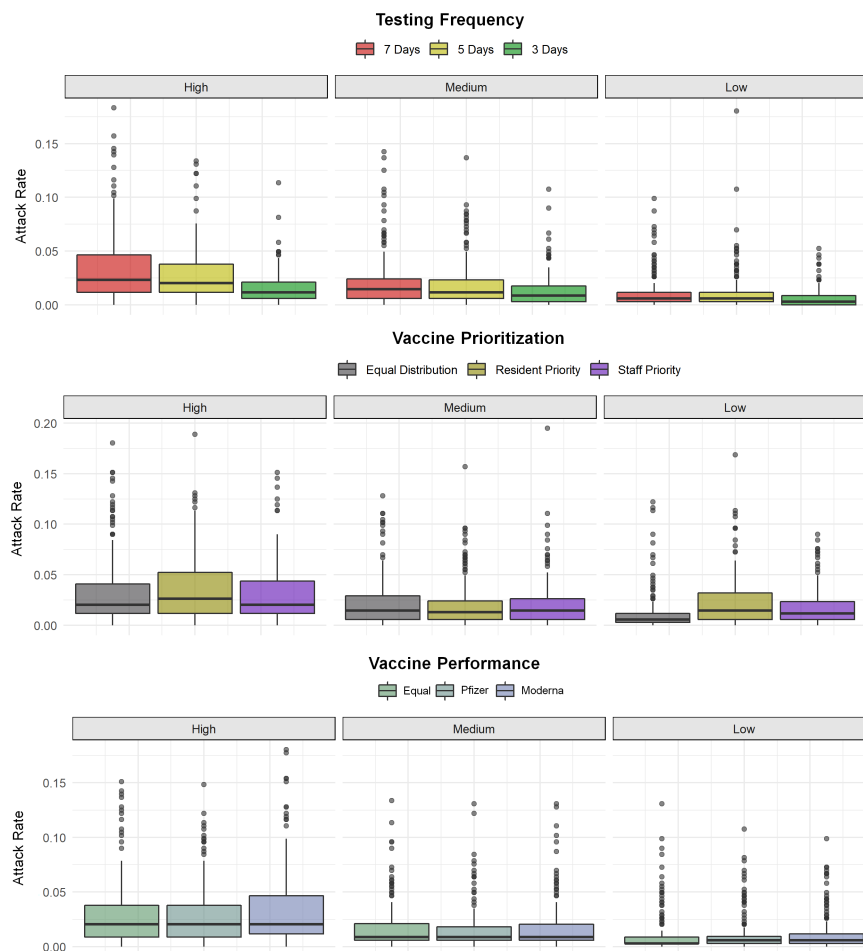


Figure 2: Attack rates for interventions under different assumptions of probability of introduction (low, medium, high).

210 The model was well calibrated to the cumulative number of cases among residents and staff in California
211 nursing homes, with R^2 and Pearson's R estimates higher than 0.79 (figure 3). Prospectively, our model
212 overestimated confirmed cases among staff. likely due the implementation new interventions put in place
213 after SARS-CoV-2 was introduced in a nursing home, namely increased frequency in testing. Our model
214 underestimated cases among residents, and it is unclear if may be driven by the fact that some staff have
215 more direct contacts with residents than others.

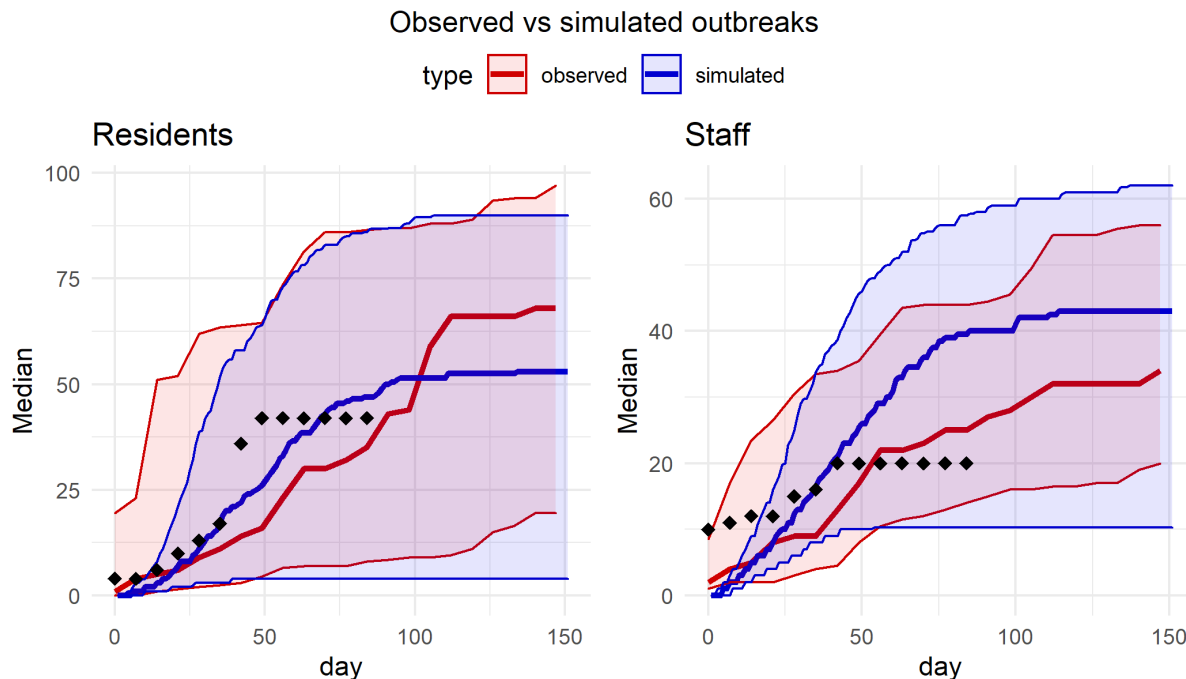


Figure 3: Model-predicted and observed number of cumulative incidence of confirmed cases for residents and staff. Dotted data represent the number of cases observed in the nursing home of study. Dark solid lines correspond to the median estimates for cases of staff and residents, and 25th and 75th percentiles are depicted in the shaded regions.

216 Sensitivity Analysis

217 Baseline virus transmission rates, introduction probability, detection probability, PPE implementation
218 and adherence, testing frequency, and vaccine efficacy were all considered for sensitivity analysis. We
219 found that changes in the implementation of PPEs had a greater impact on reducing the attack rate
220 and hospitalizations. Variation in virus transmission rates as well as the introduction probability
221 showed substantial changes in attack rate and hospitalizations. Implementation of highly effective PPEs
222 reduced the attack rate from 0.66 (95% CI: 0.39-0.85) to 0.02 (95% CI: 0-0.20), prevented 221 total
223 infections, 18 hospitalizations, and reduced the period to eradicate the outbreak by almost a week.
224 Increasing the probability of an introduction increased the total number of infections from 7 to 72, and
225 5 additional individuals were hospitalized. Analyses for these outcomes revealed significant decreases
226 attributed to testing and vaccination across different frequency of testing and vaccine efficacy. Prevention
227 of hospitalizations was more effectively accomplished through vaccination and was independent on
228 age-specific vaccine efficacy assumptions.

Table 2: Results from the sensitivity analysis summarized by the median and 95% confidence intervals for the various simulations considered.

Target Parameter	Value used	Days to Eradication	Attack Rate	Total Infected	Infected residents	Infected staff	Hospitalizations
Baseline ^a		28 (7, 70)	0.17 (0.01, 0.39)	59 (2, 134)	32 (0, 82)	23 (1,53)	5 (0, 15)
Transmission probability							
Low transmission virus ^a	0.34	21 (7, 63)	0.03 (0, 0.27)	12 (1, 93)	5 (0, 58)	8 (1, 38)	1 (0, 11)
High transmission virus ^a	0.42	28 (7, 63)	0.27 (0.01, 0.47)	93 (2, 163)	56 (0, 100)	37 (1, 65)	9 (0, 18)
Introduction probability							
Low introduction probability ^a	0.05	14 (7, 49)	0.02 (0, 0.32)	7 (0, 110)	3 (0, 72)	5 (0, 42)	1 (0, 14)
High introduction probability ^a	0.15	28 (9, 77)	0.21 (0.01, 0.42)	72 (3, 143)	39 (0, 84)	30 (2, 58)	6 (0, 15)
Detection probability							
Low detection probability (test) ^a	0.7	28 (7, 70)	0.2 (0, 0.47)	68 (1, 161)	38 (0, 97)	30 (1, 62)	5 (0,21)
High detection probability (test) ^a	0.9	21 (7, 70)	0.09 (0, 0.31)	32 (1, 108)	17 (0, 67)	16 (1, 44)	3 (0, 12)
PPE effect							
High effect PPE ^a	0.07	15 (7, 56)	0.02 (0, 0.2)	7 (1, 69)	2 (0, 40)	5 (1, 31)	1 (0, 7)
Low effect PPE ^a	0.34	21 (14, 42)	0.66 (0.39, 0.85)	228 (134, 294)	140 (79, 182)	88 (49, 114)	19 (6, 30)
Testing frequency							
Testing frequency, 5-days ^a	5-days	15 (5, 49)	0.03 (0, 0.22)	10 (1, 74)	3 (0, 44)	7 (1, 30)	1 (0, 9)
Testing Frequency, 3-days ^a	3-days	12 (3, 36)	0.01 (0, 0.15)	5 (1, 51)	1 (0, 34)	4 (1, 21)	1 (0, 5)
Vaccine effect							
Similar age-specific vaccine efficacy	0.04	14 (7, 35)	0.01 (0, 0.05)	4 (1, 17)	0 (0, 9)	3 (0, 11)	0 (0, 2)
Different age-specific vaccine efficacy [Pfizer]	0.06 ^b , 0.04 ^c	13 (7, 38)	0.01 (0, 0.06)	4 (1, 20)	0 (0, 9)	3 (0, 11)	0 (0, 2)
Different age-specific vaccine efficacy [Moderna]	0.13 ^b , 0.04 ^c	14 (7, 41)	0.01 (0, 0.07)	5 (1, 24)	1 (0, 14)	3 (1, 14)	0 (0, 3)

^aNo vaccination assumed, ^b Vaccine assumed for resident agents, ^c Vaccine assumed for staff agents

229 Discussion

230 The importance of careful use of non-pharmaceutical interventions was a critical lesson from the COVID-19
 231 pandemic. Mask policies, limited visitation, and especially universal testing were critical to successful
 232 mitigation and prevention plans in the United States. Greater access to PPE and frequent testing surely
 233 played a part in reducing the case burden on LTCFs: case rates have dropped from a high of 33,625
 234 nursing home cases/week to the current low of 1,927 cases/week [26]. December 18, 2020 marked the start
 235 of the Pharmacy Partnership for Long-Term Care Program in which the CDC partnered with multiple
 236 pharmacies to host on-site vaccination clinics for LTCF residents and staff [8]. Despite good vaccination
 237 progress, nursing home residents remain at high risk. As regulations ease, and with the possibility of
 238 requiring yearly vaccinations to prevent future outbreaks, we must consider how surveillance, PPE usage,
 239 and vaccine timing and prioritization complement each other. Our study sought to describe the potential
 240 combined effects of recommended NPIs and vaccine deployment strategies on the size and duration of a
 241 COVID-19 outbreak in a model nursing home.

242
 243 Results from our model were most evident when we assumed a larger probability of viral introduction.
 244 In such cases, increased frequency of universal testing and isolation of positive cases (quarantine or paid
 245 leave) lead to larger reductions in attack rate than any other scenario. Prioritizing the vaccination of staff
 246 over residents lead to a moderate decrease in attack rate when viral introduction probability was high.

247 Community transmission rate is the strongest predictor of case rates in nursing homes thus far [27] and
248 staff are the most important vectors through which introduction from the community occurs [11,12,28].
249 Our results support using strategic prioritization of staff for universal testing and vaccination as an
250 important method for reducing the likelihood of an outbreak, especially in situations where community
251 transmission is high.

252 There are several important challenges that these facilities will continue to face. LTCF administrators
253 reported that staffing remains one of the primary barriers to maintaining high infection control standards
254 [29]. Additionally, facilities that had a high degree of connectedness via shared staff showed higher case
255 rates in general [30]. Expanded paid leave programs may also reduce the need for staff to seek additional
256 employment to make ends meet, generally lowering their personal risk and the risk of introduction events.

257
258 Evidence indicates that staff may be more hesitant to get the vaccine than residents [10], and certainly
259 have lower first-dose rates even if unrelated to hesitancy [8]. Vaccine mandates are one way to approach
260 ensuring vaccine coverage goals are reached, but may create additional problems maintaining proper
261 staff levels for delivering quality care. Additionally, nursing staff, including CNAs and LPNs, have high
262 turnover rates in LTCFs. As a result, vaccination rates may fluctuate over time even within the same
263 facility. Maintaining vaccine coverage goals will likely require an active program that includes acquiring
264 accounting for staff who receive vaccines from a different source (i.e. a local pharmacy or a different job).
265 We have even less data about the risks presented by reopening nursing homes to visitors, prompting
266 questions about vaccine and testing requirements for visitors. An extension to this model that adds a
267 visitor agent could help answer these questions before observational data becomes available.

268

269 **Strengths and Limitations**

270 We calibrated our model to a real-world nursing home. The basal transmission model, in which no
271 agents were vaccinated, generated plausible attack rates when compared to California nursing homes of
272 a similar size. This, plus incorporating parameters from real-world data, provides external validity to
273 the changes observed in our model. A particular strength of ABM is to show how complex outcomes can
274 emerge from simple sets of rules; our model took advantage of this approach to show how interactions
275 between staff and residents manifest the outbreak patterns observed in vivo. However, this model is
276 primarily useful as an exploration of the impact of multiple interventions and introduction probabilities
277 on an outbreak once introduction has occurred, and is therefore not meant to model the processes that
278 lead to an introduction in the first place. Simulations were run for 150 days or until the facility was
279 disease-free for up to 7 days; thus, it is also not able examine the impact of multiple introductions over
280 longer periods of time or waning immunity from recovery or vaccination in its current form.

281

282 Not all data-derived parameters were made equally. The estimated effect of PPE use on transmission
283 varied widely, thus making a reliable parameter difficult to define and the model sensitive to changes.
284 Testing was also oversimplified in our model, as we assumed instantaneous results and all tests were
285 equally sensitive. Additionally, we assumed that the effects of immunity, natural or from vaccination,
286 was constant over the course of an outbreak and did not wane over time. We also assumed that staff
287 agents had an equal chance of interacting with each resident agent, which is not reflective of intervention
288 strategies that silo staff into daily routines focused on a specific subset of residents, such as dedicated
289 staff for specific wards within the nursing home or for positive, isolated individuals.

290 References

- 291 [1] T. N. Y. Times, “More than one-third of u.s. coronavirus deaths are linked to nursing homes.” <https://www.nytimes.com/interactive/2020/us/coronavirus-nursing-homes.html>. (Accessed on
292 //www.nytimes.com/interactive/2020/us/coronavirus-nursing-homes.html. (Accessed on
293 03/09/2021).
- 294 [2] L. Harris-Kojetin, M. Sengupta, J. Lendon, V. Rome, and C. Caffrey, “Long-term care providers
295 and services users in the united states, 2015–2016,” *Vital Health Stat*, 2019.
- 296 [3] B. F. Bigelow, O. Tang, B. Barshick, M. Peters, S. D. Sisson, K. S. Peairs, and M. J. Katz, “Outcomes
297 of universal covid-19 testing following detection of incident cases in 11 long-term care facilities,”
298 *JAMA Intern Med*, vol. 181, no. 1, pp. 127–129, 2020.
- 299 [4] J. K. Louie, H. M. Scott, A. DuBois, N. Sturtz, W. Lu, J. Stoltey, G. Masinde, S. Cohen, D. Sachdev,
300 S. Philip, N. Bobba, and S. F. D. o. P. H. C.-. S. N. F. O. R. T. Aragon, Tomas, “Lessons From
301 Mass-Testing for Coronavirus Disease 2019 in Long-Term Care Facilities for the Elderly in San
302 Francisco,” *Clin. Infect. Dis.*, 07 2020. ciaa1020.
- 303 [5] J. G. Ouslander and D. C. Grabowski, “Covid-19 in nursing homes: Calming the perfect storm,” *J*
304 *Am Geriatr Soc*, vol. 68, no. 10, pp. 2153–2162, 2020.
- 305 [6] C. Blackman, S. Farber, R. A. Feifer, V. Mor, and E. M. White, “An illustration of sars-cov-2
306 dissemination within a skilled nursing facility using heat maps,” *J Am Geriatr Soc*, vol. 68, no. 10,
307 pp. 2174–2178, 2020.
- 308 [7] D. R. Smith, A. Duval, K. B. Pouwels, D. Guillemot, J. Fernandes, B.-T. Huynh, L. Temime, and
309 L. Opatowski, “Optimizing covid-19 surveillance in long-term care facilities: a modelling study,”
310 *BMC Med.*, vol. 18, no. 386, 2020.
- 311 [8] R. Gharpure, A. Patel, and R. Link-Gelles, “First-dose covid-19 vaccination coverage among skilled
312 nursing facility residents and staff,” *JAMA*, 2021.
- 313 [9] R. Gharpure, A. Guo, C. K. Bishnoi, U. Patel, D. Gifford, A. Tippins, A. Jaffe, E. Shulman, N. Stone,
314 E. Mungai, S. Bagchi, J. Bell, A. Srinivasan, A. Patel, and R. Link-Gelles, “Early covid-19 first-dose
315 vaccination coverage among residents and staff members of skilled nursing facilities participating in
316 the pharmacy partnership for long-term care program - united states, december 2020-january 2021,”
317 *MMWR*, vol. 70, pp. 178–182, 2021.
- 318 [10] K. T. Unroe, R. Evans, L. Weaver, D. Rusyniak, and J. Blackburn, “Willingness of long-term care
319 staff to receive a covid-19 vaccine: A single state survey,” *J Am Geriatr Soc*, 2020.

- 320 [11] S. A. Goldberg, J. Lennerz, M. Klompas, E. Mark, V. M. Pierce, R. W. Thompson, *et al.*,
321 “Presymptomatic transmission of severe acute respiratory syndrome coronavirus 2 among residents
322 and staff at a skilled nursing facility: Results of real-time polymerase chain reaction and serologic
323 testing,” *Clin. Infect. Dis.*, vol. 72, no. 4, p. 686–689, 2021.
- 324 [12] D. J. Toth and K. Khader, “Efficient sars-cov-2 surveillance strategies to prevent deadly outbreaks
325 in vulnerable populations,” *BMC Med.*, vol. 19, no. 25, 2021.
- 326 [13] M. Voysey, S. A. C. Clemens, S. A. Madhi, L. Y. Weckx, P. M. Folegatti, P. K. Aley, B. Angus, V. L.
327 Baillie, S. L. Barnabas, Q. E. Bhorat, *et al.*, “Safety and efficacy of the chadox1 ncov-19 vaccine
328 (azd1222) against sars-cov-2: an interim analysis of four randomised controlled trials in brazil, south
329 africa, and the uk,” *Lancet*, vol. 397, no. 10269, pp. 99–111, 2021.
- 330 [14] C. for Disease Control and Prevention, “Cdc covid data tracker.” [https://covid.cdc.gov/
331 covid-data-tracker/#datatracker-home](https://covid.cdc.gov/covid-data-tracker/#datatracker-home). (Accessed on 03/09/2021).
- 332 [15] X. He, E. H. Lau, P. Wu, X. Deng, J. Wang, X. Hao, Y. C. Lau, J. Y. Wong, Y. Guan, X. Tan,
333 *et al.*, “Temporal dynamics in viral shedding and transmissibility of covid-19,” *Nat. Med.*, vol. 26,
334 no. 5, pp. 672–675, 2020.
- 335 [16] M. Feaster and Y.-Y. Goh, “High proportion of asymptomatic sars-cov-2 infections in 9 long-term
336 care facilities, pasadena, california, usa, april 2020,” *Emerg Inf Dis*, vol. 26, no. 10, p. 2416–2419,
337 2020.
- 338 [17] K. A. Walsh, K. Jordan, B. Clyne, D. Rohde, L. Drummond, P. Byrne, S. Ahern, P. G. Carty,
339 K. K. O’Brien, E. O’Murchu, M. O’Neill, S. M. Smith, M. Ryan, and P. Harrington, “Sars-cov-2
340 detection, viral load and infectivity over the course of an infection,” *Journal of Infection*, vol. 81,
341 no. 3, pp. 357–371, 2020.
- 342 [18] K. M. Azar, Z. Shen, R. J. Romanelli, S. H. Lockhart, K. Smits, S. Robinson, S. Brown, and
343 A. R. Pressman, “Disparities in outcomes among covid-19 patients in a large health care system in
344 california: Study estimates the covid-19 infection fatality rate at the us county level,” *Health Aff.*,
345 vol. 39, no. 7, pp. 1253–1262, 2020.
- 346 [19] P. P. España, A. Bilbao, S. García-Gutiérrez, I. Lafuente, A. Anton-Ladislao, A. Villanueva,
347 A. Uranga, M. J. Legarreta, U. Aguirre, and J. M. Quintana, “Predictors of mortality of covid-19
348 in the general population and nursing homes,” *Intern Emerg Med*, pp. 1–10, 2021.
- 349 [20] C. for Disease Control and Prevention, “Covid-19 pandemic planning scenarios — CDC.” [https://
350 www.cdc.gov/coronavirus/2019-ncov/hcp/planning-scenarios.html#table-2](https://www.cdc.gov/coronavirus/2019-ncov/hcp/planning-scenarios.html#table-2). (Accessed on
351 02/28/2021).

- 352 [21] M. Nuno, Y. Garcia, G. Rajasekar, D. Pinheiro, and A. J. Schmidt, “Covid-19 hospitalizations in
353 five california hospitals,” *medRxiv*, 2021.
- 354 [22] D. K. Chu, E. A. Akl, S. Duda, K. Solo, S. Yaacoub, H. J. Schünemann, A. El-harakeh,
355 A. Bognanni, T. Lotfi, M. Loeb, *et al.*, “Physical distancing, face masks, and eye protection
356 to prevent person-to-person transmission of sars-cov-2 and covid-19: a systematic review and
357 meta-analysis,” *Lancet*, 2020.
- 358 [23] L. R. Baden, H. M. El Sahly, B. Essink, K. Kotloff, S. Frey, R. Novak, D. Diemert, S. A. Spector,
359 N. Roupael, C. B. Creech, *et al.*, “Efficacy and safety of the mrna-1273 sars-cov-2 vaccine,” *NEJM*,
360 2020.
- 361 [24] F. P. Polack, S. J. Thomas, N. Kitchin, J. Absalon, A. Gurtman, S. Lockhart, J. L. Perez,
362 G. Pérez Marc, E. D. Moreira, C. Zerbini, *et al.*, “Safety and efficacy of the bnt162b2 mrna covid-19
363 vaccine,” *NEJM*, 2020.
- 364 [25] P. Taillandier, B. Gaudou, A. Grignard, Q. Huynh, N. Marilleau, P. Caillou, D. Philippon, and
365 A. Drogoul, “Building, composing and experimenting complex spatial models with the gama
366 platform,” *Geoinformatica*, vol. 23, no. 2, pp. 299–322, 2019.
- 367 [26] C. for Medicare Medicaid Services, “Covid-19 nursing home data — data.cms.gov.” [https://data.
368 cms.gov/stories/s/COVID-19-Nursing-Home-Data/bkwz-xpvg/](https://data.cms.gov/stories/s/COVID-19-Nursing-Home-Data/bkwz-xpvg/). (Accessed on 03/09/2021).
- 369 [27] R. T. Konetzka and R. J. Gorges, “Nothing much has changed: Covid-19 nursing home cases and
370 deaths follow fall surges,” *J Am Geriatr Soc*, 2020.
- 371 [28] D. J. Escobar, M. Lanzi, P. Saberi, R. Love, D. R. Linkin, J. J. Kelly, D. Jhala, V. Amorosa,
372 M. Hofmann, and J. B. Doyon, “Mitigation of a coronavirus disease 2019 outbreak in a nursing
373 home through serial testing of residents and staff,” *Clin. Infect. Dis.*, vol. ciaa1021, 2020.
- 374 [29] G. K. SteelFisher, A. M. Epstein, D. C. Grabowski, K. E. Joynt Maddox, E. J. Orav, and
375 M. L. Barnett, “Persistent challenges of covid-19 in skilled nursing facilities: The administrator
376 perspective,” *J Am Geriatr Soc*, 2021.
- 377 [30] M. K. Chen, J. A. Chevalier, and E. F. Long, “Nursing home staff networks and covid-19,” *PNAS*,
378 vol. 118, no. 1, p. e2015455118, 2021.