

Changes in HIV Treatment Differentiated Care Utilization During the COVID-19 Pandemic in Zambia

Youngji Jo^a, Sydney Rosen^{b,c}, Karla Therese L Sy^{b,d}, Bevis Phiri^e, Amy N Huber^c, Muya Mwansa^f, Hilda Shakwelele^e, Prudence Haimbe^e, Mpande M Mwenechanya^g, Priscilla Lumano Mulenga^f, Brooke E Nichols^{b,c}

^a Section of infectious disease, Department of medicine, Boston Medical Center, Boston, MA, USA

^b Department of Global Health, Boston University School of Public Health, Boston, MA, USA

^c Health Economics and Epidemiology Research Office, Department of Internal Medicine, School of Clinical Medicine, Faculty of Health Sciences, University of the Witwatersrand, Johannesburg, South Africa

^d Department of Epidemiology, Boston University School of Public Health, Boston, MA, USA

^e Clinton Health Access Initiative, Lusaka, Zambia

^f Ministry of Health, Lusaka, Zambia

^g The Centre for Infectious Disease Research in Zambia, Lusaka, Zambia

[§] Corresponding author: Brooke E Nichols

Boston University School of Public Health, 801 Massachusetts Ave, Crosstown Center 3rd Floor, Boston, MA, USA; email: brooken@bu.edu; phone: +1-617-358-2403

E-mail addresses of authors:

YJ : youngji.jo@bmc.org

SR : sbrosen@bu.edu

KTLS : rsy@bu.edu

BP : bphiri@clintonhealthaccess.org

AH : ahuber@heroza.org

MM : muya.mwansa@gmail.com

HS : hshakwelele@clintonhealthaccess.org

PH : phaimbe@clintonhealthaccess.org

MMM : mpande.mwenechanya@cidrz.org

PLM : priscillalloyd2@icloud.com

BEN: brooken@bu.edu

Keywords: Differentiated Service Delivery, COVID-19, Zambia

Word count:

Abstract: 313/350

Main text: 1777/2000

Figures/Table : 2

1 **Abstract (313/350)**
2

3 **Background:** Differentiated service delivery (DSD) models aim to lessen the burden of HIV treatment on
4 patients and providers in part by reducing requirements for facility visits and extending dispensing intervals.
5 With the advent of the COVID-19 pandemic, minimizing patient contact with healthcare facilities and other
6 patients, while maintaining treatment continuity and avoiding loss to care, has become more urgent, resulting in
7 efforts to increase DSD uptake. We assessed the extent to which DSD coverage and antiretroviral treatment
8 (ART) dispensing intervals have changed during the COVID-19 pandemic in Zambia.
9

10 **Methods:** We used patient data from Zambia's electronic medical record system (SmartCare) for 737 health
11 facilities, representing about 3/4 of all ART patients nationally, to compare the numbers and proportional
12 distributions of patients enrolled in DSD models in the six months before and six months after the first case of
13 COVID-19 was diagnosed in Zambia in March 2020. Segmented linear regression was used to determine whether
14 the introduction of COVID-19 into Zambia further accelerated the increase in DSD scale-up.
15

16 **Results:** Between September 2019 and August 2020, 181,317 patients aged 15+ (81,520 and 99,797
17 from September 1, 2019 to March 1, 2020 and from March 1 to August 31, 2020, respectively) enrolled in
18 DSD models in Zambia. Overall participation in all DSD models increased over the study period, but uptake
19 varied by model. The rate of acceleration increased in the second period for home ART delivery (152%), ≤2-
20 month fast-track (143%), and 3-month MMD (139%). There were significant decelerations in the increase in
21 enrolment for 4-6-month fast-track (-28%) and 'other' models (-19%).
22

23 **Conclusions:** Participation in DSD models for stable ART patients in Zambia increased after the advent of
24 COVID-19, but dispensing intervals diminished. Eliminating obstacles to longer dispensing intervals, including
25 those related to supply chain management, should be prioritized to achieve the expected benefits of DSD
26 models and minimize COVID-19 risk.
27
28
29
30
31
32
33
34
35
36
37

38 Introduction

39

40 In 2020, an estimated 16.4 million people taking antiretroviral therapy (ART) for HIV treatment in sub-Saharan
41 Africa risked treatment interruptions because of COVID-19 due to closing or limiting of HIV services,
42 antiretroviral supply chain disruptions, and/or overwhelmed service providers.[1] Maintenance of ART services
43 — in addition to continued case identification and prompt initiation of newly diagnosed people living with HIV
44 (PLHIV) on lifelong treatment — is critical to protect the progress that has been made towards HIV epidemic
45 control.[2]

46

47 One potential solution to the disruptions caused by COVID-19 is differentiated service delivery (DSD), a “patient-
48 centered approach that simplifies and adapts HIV services across the cascade to serve the needs of people living
49 with HIV (PLHIV) better and reduce unnecessary burdens on the health system.”[3] DSD has emerged as a key
50 strategy of HIV programs in resource-limited settings, as, DSD models can lessen the burden of HIV treatment on
51 patients and providers in part by extending medication dispensing intervals, reducing requirements for facility
52 visits, and adjusting the location of service delivery. These adjustments also minimize patient contact with
53 healthcare facilities and other patients, a high priority during the COVID-19 pandemic.

54

55 In Zambia, the Ministry of Health began promoting DSD models for antiretroviral treatment in 2016, with
56 participation gradually increasing over time.[4] By February 2021, roughly a quarter of the country’s nearly 1
57 million ART patients had ever been enrolled in a DSD model. The models offered in Zambia included multi-
58 month dispensing (MMD), fast-track medication pickup, community adherence groups (CAGs), and home ART
59 delivery, with healthcare facilities varying widely on which of these or other models they adopted. Since 2016, 3-
60 month dispensing has been the standard of care for stable patients, though it has not been universally
61 implemented. Six-month dispensing was introduced in 2019. When the country’s first SARS-CoV-2 infection was
62 confirmed in March 2020, the Ministry of Health doubled down on implementation of 3- and 6-month
63 dispensing for stable patients. Other models became more or less attractive in the face of COVID-19 risks and
64 restrictions, depending on whether they required patients to meet as groups (e.g. CAGs) or reduced the need for
65 public interaction (e.g. home delivery). In this study, we assessed the association between the COVID-19
66 pandemic and Zambia’s response to it and the rate of change of enrolment in DSD models in the six-
67 month period before and after diagnosis of the first SARS-CoV-2 case.

68

69 Methods

70

71 To assess how DSD model enrolment, by model type, changed before and after the start of the COVID-19
72 pandemic, we conducted a retrospective review of SmartCare, Zambia’s national electronic medical record
73 system. As of February 2021, 737,411 patients were recorded in SmartCare as currently on ART, representing
74 roughly three quarters of all ART patients in the country. The remaining quarter of patients attend facilities that
75 do not yet utilize SmartCare. We accessed records for all patients aged 15 years or older who enrolled in any
76 DSD model between September 2019 and August 2020 at any of 737 health facilities across all 10 provinces. We
77 collapsed the many DSD models recorded in SmartCare into eight groups based on the location and duration of
78 medication dispensing: ≤2-month fast-track, 3-month fast-track, 4-6-month fast-track, 3-month MMD, 4-6-
79 month MMD, CAGs, home ART delivery, and all others. A description of each model can be found in Table 1).[5]

80

81 We first describe the basic characteristics of patients enrolled by DSD model before and after the introduction of
82 COVID-19 in Zambia to determine whether enrolment in models has changed in terms of location (urban/rural,
83 level of health facility) or in the age or sex distribution of patients enrolling. For each of the DSD model groups,
84 we calculated the number of DSD enrolments by month from September 2019 to August 2020. To assess the
85 effect of the COVID-19 pandemic on DSD care utilization, we conducted an interrupted time series analysis using
86 a segmented regression. Segmented regression has been previously used to evaluate changes at any defined
87 point in time.[6] In our analysis, we compared the change in slope between the cumulative number of patients
88 enrolled in DSD before March 1, 2020 compared to March 1st through August 2020 (i.e. before and after
89 March 1st, 2020), the approximate date when COVID-19 was first diagnosed in Zambia.[7] We used the
90 following segmented regression model: $DSD_t = \beta_0 + \beta_1 time + \beta_2 covid_t + \beta_3 time \cdot covid_t$ where *time* is in
91 months, and *covid* is a dummy variable indicating whether the current time is pre- or post-covid. The outcome
92 *DSD* is the cumulative number of patients enrolled in DSD at time *t*. β_3 indicates the slope change following the
93 intervention, which we then tested whether there was a significant change in β_3 before and after March 1,
94 2020; a significant change in slope would suggest that DSD utilization changed substantially during the COVID-19
95 pandemic. All analyses were performed at a two-sided significance level of 0.05. Finally, we estimated percent
96 changes in participation between the periods for each model group based on the mean slope. Data analysis was
97 conducted in *R version 4.0.2*. (The R Project for Statistical Computing, Vienna Austria).

98

99 Ethics

100 This study protocol was approved by ERES Converge IRB (Zambia), protocol number 2019-Sep-030, the Human
101 Research Ethics Committee (Medical) of the University of Witwatersrand, protocol number M190453, and the
102 Boston University IRB H-38823.

103

104

105 Results

106

107 Participation in DSD models before and after the introduction of COVID-19 in March 2020 is presented
108 in Table 2. Between September 2019 and August 2020, 181,317 patients aged 15+ enrolled in DSD
109 models in Zambia, including 81,520 before and 99,797 on or after March 1, 2020, an overall increase of
110 22.4%. Uptake varied widely by model, however. Between the two periods, participation in 3-month
111 dispensing increased from 13% to 21% of all DSD enrollments, ≤ 2 -month fast-track from 7% to 10%, and home
112 ART delivery from 1% to 2%. The proportion of all DSD enrollments in 4-6-month fast-track fell from 23% to 14%,
113 3-month fast-track from 8% to 7%, and CAGs from 4% to 3%. There was no change in the proportion enrolled in
114 4-6-month MMD (38% of all DSD enrolments in both periods). Proportions of patients enrolled in rural areas
115 increased for ≤ 3 -month fast-track, 3-month-MMD, community adherence groups, and others. Home ART
116 delivery was the only model to see a relative increase in the proportion of patients enrolled in urban areas
117 (Table 2). There were no significant differences between the two time periods in the composition of the
118 population enrolled in terms of sex or age.

119

120 Participation in DSD models accelerated over the study period. Comparing the periods before and after March 1,
121 2020, segmented linear regression models demonstrated an acceleration in the rate of increase (significant

122 increases in slope) in participation during the COVID-19 pandemic for home ART delivery (152% change in slope
123 between periods), ≤ 2 -month fast-track (143%), and 3-month MMD (139%). Three-month fast-track showed
124 both an immediate increase in numbers enrolled (155% from 6,278 to 9,729) and a significant acceleration in the
125 rate of increase (60%) between the two periods. In contrast, there were significant decelerations in the increase
126 in enrolment for 4-6-month fast-track (-28%) and for 'other' models (-19%) (Figure 1).

127

128 Discussion

129

130 Over the course of 2020, the COVID-19 pandemic was associated with accelerated participation in DSD models
131 in Zambia, though with uneven increases across the models. Most new patients enrolled in ≤ 2 -month fast track,
132 3-month MMD, 4-6-month MMD, CAGs, or home ART delivery. On the other hand, increase in DSD enrollment
133 was slower for the 4-6-month fast-track and 'other' models. Participation in home ART delivery increased the
134 most (168%), but it still accounted for only a small proportion of all participation (2%). Recommendations that
135 high-risk individuals remain at home, in order to minimize their exposure to SARS-CoV-2, may potentially explain
136 the expansion of home delivery models. We also found an immediate jump in enrolment for ≤ 2 -month and
137 3-month fast-track in March 1, 2020 and an increase one month later for home ART delivery.

138

139 Although 6-month dispensing is Zambia's national policy for stable patients, the proportion of patients
140 enrolled in the 6-month dispensing model fell between the two time periods, while ≤ 3 -month
141 dispensing increased. The shortening of dispensing intervals may be primarily due to patients switching
142 temporarily from the newer ARV regimen of tenofovir+lamivudine+dolutegravir (TLD) back to the
143 previous regimen tenofovir+lamivudine+efavirenz (TLE) to mitigate threats to the TLD global supply
144 chain. In a recent WHO survey, five of 13 countries in sub-Saharan Africa reported ART stock availability for
145 major first-line regimens to be 3 months or less due, in part, to failure of suppliers to deliver on time.[8] There is
146 clear tension between the desire to implement longer-duration dispensing to minimize patient interaction at
147 healthcare facilities due to COVID-19 transmission concerns and the reality of the impact that the pandemic has
148 had on the global supply chain. If supply chain concerns are responsible for the drop in dispensing duration we
149 observed in Zambia, then 6-month dispensing should be expected to rebound as the pandemic is brought under
150 control and the supply chain strengthens.

151

152 Our study has several limitations. We relied entirely on routinely collected medical record data, which may be
153 incomplete in some cases. While interrupted time series analysis allows the ability to control for secular trends
154 in the data (unlike pre-/post- cross-sectional studies) using population-level data with clear graphical
155 presentation of results, this analysis does not illustrate how and why the introduction of COVID-19 resulted
156 different scale-up patterns by DSD models and whether and to what extent the temporal changes may differ by
157 setting. Future research may examine the drivers and barriers of multi-month dispensing from both the demand
158 and supply side aspects in the context of COVID-19 to improve continuation of care. Moreover, this analysis
159 focused on DSD enrolment only; we have not considered retention in the DSD models or care more generally.
160 Future work should aim to understand how this rapid acceleration of DSD uptake has affected overall retention
161 in care.

162

163 Conclusions

164

165 Based on national electronic medical record data for patients enrolled in DSD models in Zambia from September
166 2019-August 2020, our findings suggest that the introduction of the COVID-19 pandemic was associated with an
167 acceleration in the scale-up of DSD models for patients on ART in Zambia. Efforts to eliminate obstacles to
168 longer dispensing intervals should be prioritized to achieve the expected benefits of DSD models and minimize
169 COVID-19 risk. This process has already begun in Zambia, where the government is now recommending
170 relaxation of eligibility criteria for multi-month dispensing, such that all patients initiating ART to receive a three
171 or six month supply of medications immediately, allowing them to delay their first follow-up visit for three or six
172 months after initiation [9]. Evaluating the impact of this evolution in DSD guidelines will be a high priority for the
173 coming years.

174

175

176 **Competing interests**

177 The authors declare that they have no conflicting interests.

178

179 **Authors' contributions**

180 YJ, SR and BEN conceived the study. YJ, SR, KTLS, BEN designed the study. BP, MM, HS, PH, MMM, PLM led study
181 data collection. YJ, KTLS analyzed the data, and SR, ANH, BEN contributed to data analysis. YJ, SR, KTLS, BEN
182 wrote the first draft of the manuscript. All authors reviewed and edited the manuscript. All authors have read
183 and approved the final manuscript.

184

185

186 **Acknowledgements**

187 None declared

188

189 **Funding**

190 Funding for the study was provided by the Bill & Melinda Gates Foundation through OPP1192640 to Boston
191 University. The funder had no role in study design, data collection and analysis, decision to publish or
192 preparation of the manuscript.

193

194 **List of abbreviations**

ART	Antiretroviral therapy
CAG	Community adherence group
DSD	Differentiated service delivery
HIV	Human immunodeficiency virus
MMD	Multi-month dispensing

195

196

197

198

199

200

201

202 **Table 1.** Description of each of the evaluated differentiated service delivery models implemented in Zambia
 203 between September 2019 and August 2020

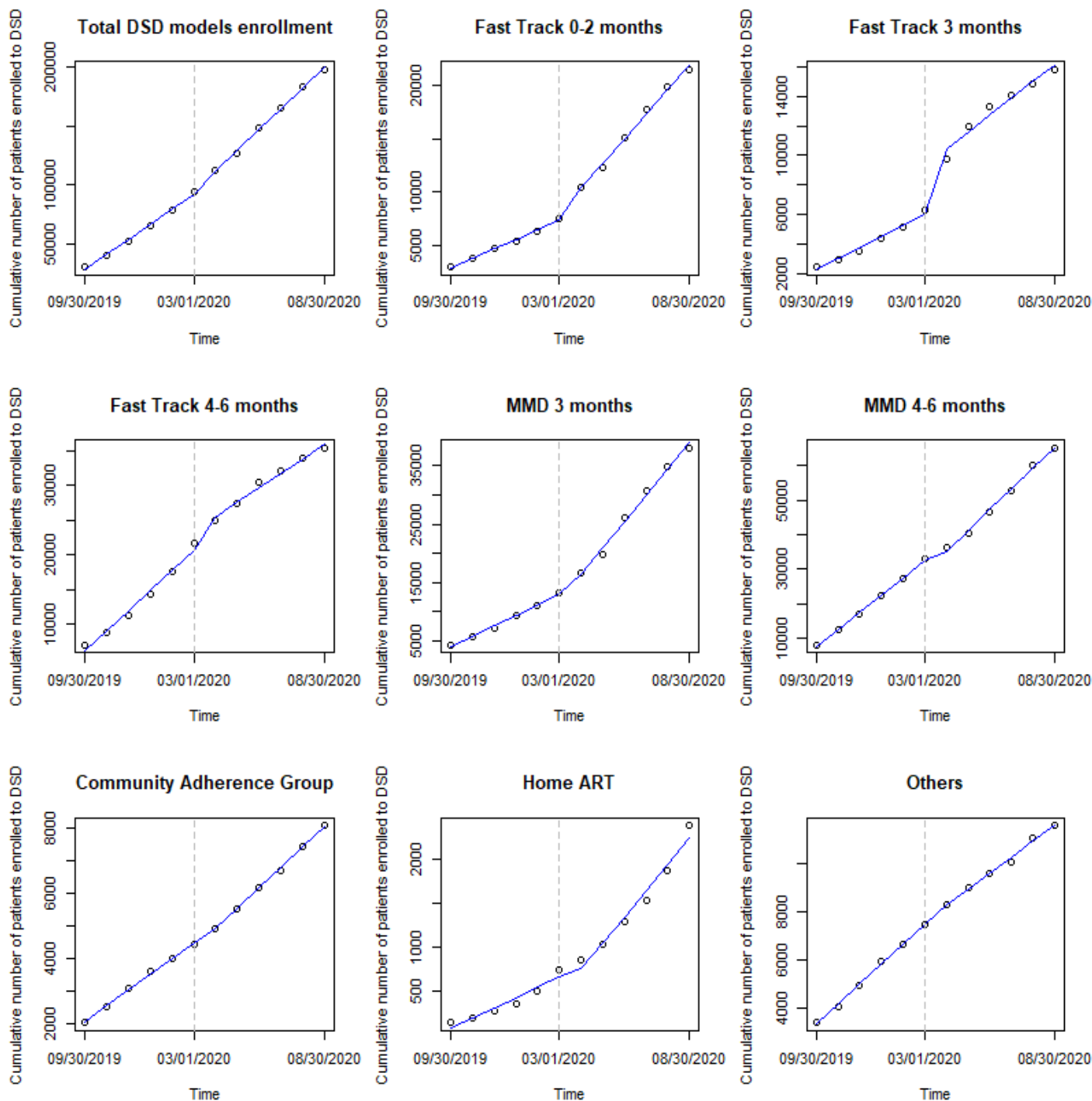
Differentiated service delivery model	Description
Fast-track (≤2-month, 3-month, 4-6-month)	A model that creates a separate queue, kiosk, or procedure at a facility to speed up service delivery for stable patients.[5] In Zambia, this typically involves a separate and shorter queue for quick dispensing when a clinical visit is not indicated.
Multi-month dispensing (MMD) (3-month, 4-6-month)	Any model in which the primary goal is to dispense medications for a longer duration than is done under standard care (usually 3 or 6 months).[5] Dispensing is typically done alongside a clinical facility-based visit.
Community adherence group (CAG)	Group of ±6 people, based on residential proximity or patient preference, meet monthly at a designated place in the community. Members collect medication at clinical appointments for other CAG members, in a rotating fashion.[4]
Home ART delivery	Trained community health workers (CHWs) linked to facilities conduct home visits to deliver ART, conduct health screening, monitor adherence and refer patients as required. All community services are captured on a tablet-based SmartCare linked Community HTC or Community ART module.[4]
Others	There are a number of additional models currently enrolling patients in Zambia, but all at a relatively small scale. These models include: after/before hours [ART dispensing available outside standard clinic hours], central dispensing unit [ART dispensing at a central distribution point in the community], community ART distribution points [ART dispensing at distribution points in the community], community pharmacy [ART dispensing at pharmacies in the community], health post [ART dispensing at the most remote facilities that do not typically dispense ART], scholar [expanded hours, focused on school-going youth], rural/urban adherence groups [pre-packed ART dispensed by a healthcare worker in a group setting outside of typical clinic hours], mobile ART distribution [ART dispensed in the community in more remote areas that do not have easy clinic access], weekend clinic [ART dispensing on the weekend].

Table 2. Percentage change in numbers of patients enrolled in DSD models before and after COVID-19 introduction in Zambia (n=181,317)

Parameters		Number of patients	Location		Health care level			Sex		Age (Mean, SD)
			Urban	Rural	Health post	Clinic	Hospital	Male	Female	
All models	Before ^a	81520	64997	16523	4587	49619	27314	28562	46808	42 (11)
	After ^b	99797	75424	24373	5218	58403	36176	36386	59587	41 (12)
	%Δ ^c	22%	16%	48%	14%	18%	32%	27%	27%	-
≤2-month fast track dispensing	Before	6005	4405	1600	302	4202	1501	2078	3927	40 (12)
	After	10163	7205	2958	618	6854	2691	3654	6509	39 (11)
	%Δ	69%	64%	85%	105%	63%	79%	76%	66%	-
3-month fast-track dispensing	Before	6325	5788	537	318	3973	2034	2067	4258	41 (10)
	After	6917	6140	777	350	4360	2207	2427	4490	41 (11)
	%Δ	9%	6%	45%	10%	10%	9%	17%	5%	-
4-6-month fast-track dispensing	Before	19112	18283	829	2013	10026	7073	6481	12631	43 (10)
	After	14168	13627	541	975	7553	5640	5172	8996	43 (10)
	%Δ	-26%	-25%	-35%	-52%	-25%	-20%	-20%	-29%	-
3-month MMD	Before	10743	8215	2528	410	7101	3232	3744	6999	41 (11)
	After	21101	14812	6289	1122	13030	6949	7564	13537	41 (12)
	%Δ	96%	80%	149%	174%	83%	115%	102%	93%	-
4-6-month MMD	Before	30832	22447	8385	998	19689	10145	11246	19586	44 (11)
	After	38120	28260	9860	1439	21576	15105	14172	23948	43 (11)
	%Δ	24%	26%	18%	44%	10%	49%	26%	22%	-
Community adherence groups	Before	2885	1595	1290	112	1628	1145	917	1968	45 (11)
	After	3483	1362	2121	133	2220	1130	1231	2252	45 (11)
	%Δ	21%	-15%	64%	19%	36%	-1%	34%	14%	-
Home ART delivery	Before	721	444	277	240	132	349	283	438	39 (12)
	After	1929	1472	457	288	838	803	686	1243	39 (12)
	%Δ	168%	232%	65%	20%	535%	130%	142%	184%	-
Others	Before	4897	3820	1077	194	2868	1835	1746	3151	40 (13)
	After	3916	2546	1370	293	1972	1651	1480	2436	39 (13)
	%Δ	-20%	-33%	27%	51%	-31%	-10%	-15%	-23%	-

- a. Before- September 2019-February 2020
 b. After- March 2020-August 2020
 c. Percentage increase between before and after periods

20 **Figure 1.** Interrupted time series scatter plot and slope lines for the DSD models before (September 2019-February
21 2020) and after (March 2020-August 2020) March 1, 2020 in Zambia
22



23
24
25
26
27
28

References

1. World Health Organization. The cost of inaction: COVID-19-related service disruptions could cause hundreds of thousands of extra deaths from HIV. May 11, 2020. <https://www.who.int/news/item/11-05-2020-the-cost-of-inaction-covid-19-related-service-disruptions-could-cause-hundreds-of-thousands-of-extra-deaths-from-hiv>
2. CDC. Operational Considerations for Maintaining Essential Services and Providing Care and Treatment for those Living with HIV in Low-Resource non-US Settings During the COVID-19 Pandemic. <https://www.cdc.gov/coronavirus/2019-ncov/downloads/global-covid-19/COVID-Essential-services-HIV.pdf>
3. Ehrenkranz, P., et al., *Expanding the Vision for Differentiated Service Delivery: A Call for More Inclusive and Truly Patient-Centered Care for People Living With HIV*. J Acquir Immune Defic Syndr, 2021. **86**(2): p. 147-152.
4. Nichols, B.E., et al., *Community-based delivery of HIV treatment in Zambia: costs and outcomes*. AIDS, 2021. **35**(2): p. 299-306.
5. Huber A, Pascoe S, Nichols B, Long L, Kuchukhidze S, Phiri B, Tchereni T, Rosen S. Differentiated service delivery models for HIV treatment in Malawi, South Africa, and Zambia: A landscape analysis. Global Health: Science and Practice; in press.
6. Bernal, J.L., S. Cummins, and A. Gasparrini, *Interrupted time series regression for the evaluation of public health interventions: a tutorial*. Int J Epidemiol, 2017. **46**(1): p. 348-355.
7. CDC. First 100 Persons with COVID-19 — Zambia, March 18–April 28, 2020. October 23, 2020. <https://www.cdc.gov/mmwr/volumes/69/wr/mm6942a5.htm>
8. Jewell, B.L., et al., *Potential effects of disruption to HIV programmes in sub-Saharan Africa caused by COVID-19: results from multiple mathematical models*. Lancet HIV, 2020. **7**(9): p. e629-e640.
9. Anna Grimsrud. Impacts of COVID 19 to HIV service delivery.14 August 2020. https://www.differentiatedservicedelivery.org/Portals/0/adam/Content/EBB9KL28MUOMZ6NaaUclaA/File/WEBINAR1_1_IAS_Anna_presentation.pdf