

23 The current pandemic caused by SARS-COV-2 virus, widely known as COVID-19, has affected
24 more than 75 million people worldwide and as of 20th December 2020 has caused more than 1.6
25 million deaths according to WHO [1]. Early identification, isolation and quarantine of contacts
26 play a vital role in controlling the pandemic. The high number of COVID- 19 cases and fast
27 spreading ability of the virus warrants mass screening which involves large number of diagnostic
28 tests being conducted. Currently sample collection with nasopharyngeal swabbing followed by
29 RT-PCR of is the gold standard for diagnosis of COVID-19 [2].

30 Nasopharyngeal swabs requires trained personnel to collect the sample, there is a risk of exposure
31 for the healthcare personnel procuring the sample, discomfort to the patients during the procedure,
32 there are also contraindications for doing nasopharyngeal swabbing like coagulopathies, anti-
33 coagulant therapy and deviated nasal septum. Moreover, when the swabbing is not performed
34 correctly, adequate sample might not be obtained, leading to inconclusive/invalid results and the
35 need to repeat swabbing. This method of sample collection also requires the use of PPE by the
36 healthcare personnel collecting the swab, as there is a high risk of exposure, leading to additional
37 drain on resources. All the above-mentioned aspects suggest the need for alternative methods of
38 testing and diagnosis for COVID-19 and saliva seems to be an excellent alternative available.

39 The human saliva has hundreds of microbial species, many of which are related to diseases
40 affecting humans [3],including hereditary, autoimmune diseases, malignancies and infections
41 [4,5]. Saliva has also been used as an important diagnostic tool in previous coronavirus infections
42 like severe acute respiratory syndrome (SARS) and Middle East respiratory syndrome (MERS)
43 [6].

44 Diagnosis of viral infections from salivary samples depends on various factors like the presence
45 of the virus in the saliva and the load of viral particles like DNA, RNA, antigens, host antibodies,

46 the duration and stage of infection as some viruses can be detected in saliva almost a month after
47 infection [7,8].

48 In the context of COVID-19, the saliva plays a crucial role in the transmission of the disease, as
49 droplets are the main source of human to human transmission. The saliva contains the viral
50 particles, anti- SARS-COV-2 antibodies, infected host cells, which can be used for diagnostic as
51 well as prognostic purposes. [9,10] Further in COVID-19, the infection of salivary glands occurs
52 earlier in the disease [11], the viral load in saliva is highest during the first week of onset and it
53 can be detected in saliva as long as 25 days after the onset of infection, all this suggests saliva as
54 an effective alternative non- invasive method for diagnosis of COVID-19 [12].

55 Saliva testing also offers additional advantages during mass testing, as it is non – invasive, does
56 not require a trained healthcare personnel to collect the sample, therefore alleviates the need for
57 PPE, swabs and the issues of demand of PPE and other resources, no risk of exposure for the health
58 personnel as the patient themselves can collect the sample, there are no contraindications for this
59 method of sample collection, its more comfortable for patients especially when multiple testing
60 are done and using salivary samples disease monitoring can also be done[11-13].

61 Hence this study aims to explore how efficient is RNA extraction free method for detection of
62 SARS-COV-2 in saliva, as an alternative specimen for COVID- 19 testing.

63 **Objectives**

- 64 1. To compare the sensitivity and specificity of RNA extraction free method for molecular
65 testing of SARS-COV-2 of salivary sample vs nasopharyngeal samples
- 66 2. To compare the efficiency of RNA extraction free method of salivary sample in established
67 PCR-based testing with BGI Genomics' 2019-nCoV Fluorescence Detection Real-Time

68 RT-PCR Kit and Thermo fischer/ Applied Biosystems TaqPath COVID-19 CE-IVD

69 RT-PCR Kit

70 **Methodology**

71 **Sample size calculation**

72 The SARS-COV-2 infection positivity was around 5% in our lab, at the time of the study. With
73 the recommendation based on Bujang et al [14] we calculated the minimum sample size to be 380
74 participants, including 19 positive cases to achieve a minimum power of at least 80%, at a
75 significance level of 5%, to detect a sensitivity of 95%. This sample would also be able to detect
76 a specificity of 95%.

77 **Methods**

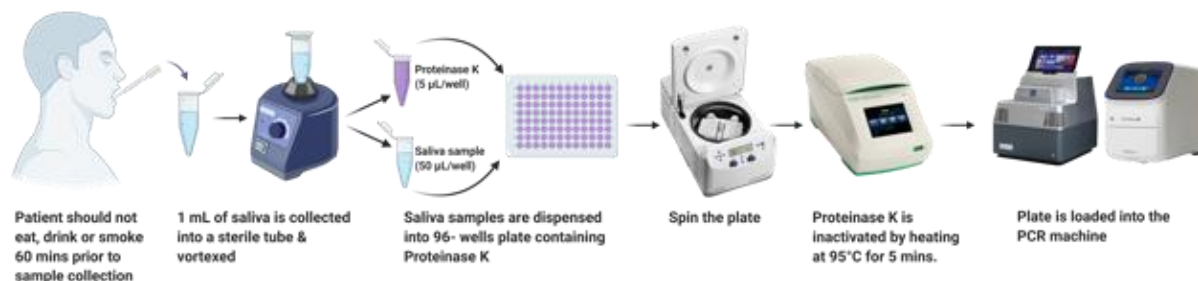
78 The study was approved by the Department of Health (DOH) Institutional review board (IRB),
79 Abu Dhabi. The study followed all regulations and guidelines of the IRB. The participants of the
80 study were well-informed about the details of the study and informed consent was obtained. After
81 obtaining the consent from the participants, one nasopharyngeal swab (NPS) and salivary sample
82 was collected from each participant. Totally 600 people participated in the study. The NPS samples
83 were collected by trained healthcare personnel as per protocol in place and were immediately
84 transported to the lab. The salivary samples were collected in a sterile Dnase/Rnase free container
85 without any stabilizing agent. Instructions were given to all the participants before saliva
86 collection. The preconditions for saliva collection include no food, drinks, smoke nor oral hygiene
87 products in the last one hour prior to sample collection. Participants were asked to pool saliva in
88 their mouth for 1–2 minutes. The collected salivary samples were transported to the lab, in

89 temperature-controlled boxes at 2-8 degrees Celsius, where they were processed by a nucleic acid
90 extraction free method for SARS-COV-2 detection.

91 **RNA extraction free direct method**

92 It is a nucleic acid extraction free method for SARS-COV-2 detection following the protocol of
93 Saliva-Direct test, a saliva-based, nucleic-acid-extraction-free, qRT-PCR method for SARS-CoV-
94 2 detection [15]. The Saliva sample collected is first treated with proteinase K followed by a heat
95 inactivation step and is then directly used as input in the RT-qPCR test using validated primer and
96 probe sets.[Figure1] The RT-PCR was performed using BGI Genomics' 2019-nCoV Fluorescence
97 Detection Real-Time RT-PCR Kit and Thermo fisher/ Applied biosystems kit.

98 **Figure 1: Process of RNA extraction free method for molecular testing of SARS-COV-2**



99

100 **The BGI Genomics' 2019-nCoV Fluorescence Detection Real-Time RT-PCR Kit [BGI kit]**

101 **[16]**

102 The Real-Time Fluorescent RT-PCR Kit for Detecting SARS-2019-nCoV are used for the
103 identification of SARS-CoV-2 RNA in nasopharyngeal swabs, throat swabs and Broncho alveolar
104 Lavage Fluid (BALF) from patients with SARS-CoV-2.

105 The qPCR procedure was performed following manufacturer's instructions and was optimized for
106 processing saliva samples. For optimization, results with high CT values for viral genes (ORF1AB)
107 at FAM channel (CT value > 35 and ≤ 38) or with abnormal amplification curves were reprocessed
108 for confirmation. Samples with CT values > 38 and S shaped amplification curve are considered in
109 the Grey zone and were reprocessed for confirmation. If the same result was obtained with the
110 repeat testing, the result was confirmed as positive. This optimization was done to avoid false
111 positives results at higher CT values.

112 **The Thermo fischer/ Applied Biosystems TaqPath COVID-19 CE-IVD RT-PCR Kit**
113 **[Thermo fisher kit][17]**

114 TaqPath COVID-19 CE-IVD RT-PCR Kit contains the reagents and controls for real-time reverse
115 transcription polymerase chain reaction (RT-PCR) test intended for the qualitative detection of
116 nucleic acid from SARS-CoV-2 in upper respiratory specimens (such as nasopharyngeal,
117 oropharyngeal, nasal, and mid-turbinate swabs, and nasopharyngeal aspirate) and bronchoalveolar
118 lavage (BAL) specimens from individuals suspected of COVID-19. It is a multiplex assay that
119 contain three primer/probe sets specific to different SARS-CoV-2 genomic regions and
120 primers/probes for bacteriophage MS2. The manufacturer instructions were followed, and
121 reporting was done as per the instructions.

122 To compare the efficiency of RNA extraction free method of salivary sample in RT-PCR based
123 testing with BGI RT-PCR kit and Thermo fischer/ Applied Biosystems RT-PCR Kit, 258 random

124 samples out of these 600 salivary and NPS were processed through the RT-PCR machine using
125 the Thermo fischer/ Applied Biosystems kit. The reports of the salivary sample processed through
126 both these kits were compared with the results of the gold standard NPS results.

127 Results

128 600 salivary samples were included in our study and 5 of these 600 (0.8%) salivary samples turned
129 invalid. The results of the salivary sample were compared with the NPS sample results. [Table 1]

130 **Table 1: Shows the results of salivary sample compared to gold standard NPS results using**
131 **the BGI RT-PCR kit (n=600)**

NPS sample [BGI KIT]		Positive	Negative	Total
RNA extraction free method for saliva (BGI kit)	Positive	198	18	216
	Negative	34	345	379
	Total	232	363	595

132
133 The sensitivity detected was 85.34%, specificity – 95.04%, Positive predictive value (PPV) –
134 91.67%, positive predictive value (NPV)- 91.03%, the measurement agreement - Kappa coefficient
135 was 0.797 ($p < 0.001$) when compared to the gold standard NPS results. The mean Ct value for
136 saliva samples was 11.29 ± 15.21 and the mean for NPS samples Ct value was 10.93 ± 13.55 . The
137 difference was not found to be statistically significant (p value – 0.433). The correlation between
138 the Ct values of saliva and NPS were found to be 0.692 with a significant p value < 0.001

139 Out of these 600 samples 258 random samples were processed for RT-PCR by RNA extraction
140 free method using the Thermo fischer/ Applied Biosystems kit, of which 27 salivary samples

141 turned to be invalid. The results of the salivary sample were compared with the gold standard NPS
 142 sample. [Table 2]

143 **Table 2: Shows the results of salivary sample compared to gold standard NPS results using**
 144 **the Thermo fisher RT-PCR kit (n=258)**

NPS sample [Thermofisher/Applied Biosystem KIT]		Positive	Negative	Total
RNA extraction free method for saliva (Thermofisher/Applied Biosystem KIT)	Positive	200	3	203
	Negative	2	26	28
	Total	202	29	231

145
 146 For comparison, matched 258 samples that were processed with both the BGI RT-PCR Kit and
 147 Thermo fisher/ Applied Biosystems kit were used for further analysis, in this 4 samples turned to
 148 be invalid. Table 3 shows the results of the matched 258 salivary and NPS samples using the BGI
 149 kit [Table 3]

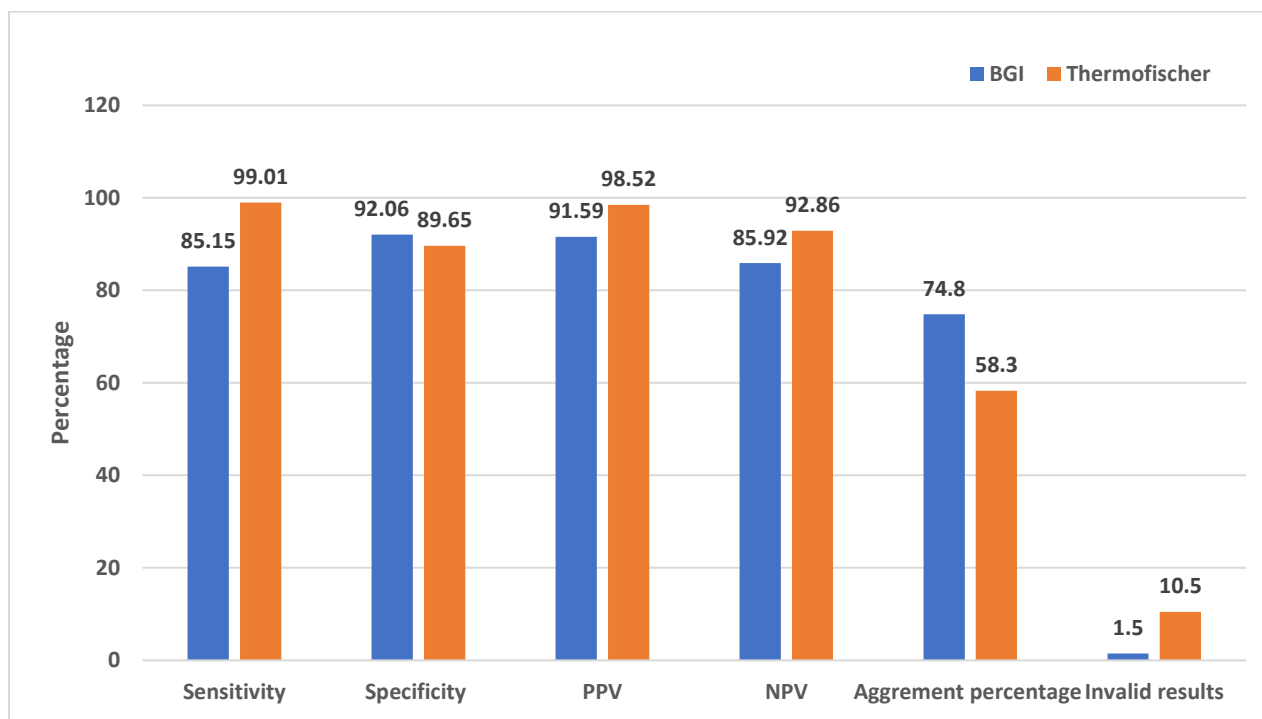
150 **Table 3: Shows the results of the 258 matched salivary sample processed through the BGI**
 151 **kit compared to gold standard NPS results (n=258)**

NPS sample [BGI KIT]		Positive	Negative	Total
RNA extraction free method for saliva (BGI kit)	Positive	109	10	119
	Negative	19	116	135
	Total	128	126	254

152

153 The sensitivity, specificity, PPV, NPV and the percentage of agreement (kappa agreement %)
154 between the two different kits were calculated and compared. [Figure 2]. There was statistically
155 significant difference between the two kits in terms of sensitivity, PPV, agreement percentage and
156 the percentage of invalid results.[Table 4]

157 **Figure 2: Graph comparing the various parameters between the BGI and Thermo fisher kit**



158
159
160
161
162
163
164

165 **Table 4: Compares the parameters between the BGI and Thermo fisher kit**

Parameters	RNA extraction free direct method (BGI) n- 258	RNA extraction free direct method (Thermo) n- 258	P value
Sensitivity	85.15	99.01	< 0.001
Specificity	92.06	89.65	0.674
PPV	91.59	98.52	< 0.001
NPV	85.92	92.86	0.317
Kappa Agreement %	74.8	58.3	<0.001
Invalid results	4/258 (1.5%)	27/258 (10.5%)	<0.0001
False positive results	10/ 254 (3.9%)	3/231(1.2%)	0.071

166 The mean Ct values of the saliva and NPS samples were compared in both the kits. [Table 5].

167 There was no significant difference in the Ct values of salivary and NPS samples in both the kits.

168 However there was better correlation of 0.607 ($p < 0.001$) between the Ct values of salivary and NPS

169 samples when the BGI kit was used compared to Thermo fisher kit which had a correlation value

170 of 0.472 ($p < 0.001$).

171 **Table 5: Compares Ct values between the saliva and NPS samples**

Method	Sample	Mean \pm SD	<i>p</i> value	Correlation	<i>p</i> value
BGI Kit	Saliva	14.19 \pm 15.66	0.632	0.607	<0.001
	NPS	13.80 \pm 13.43			
Thermo Fisher Kit	Saliva	20.52 \pm 12.79	0.343	0.472	<0.001
	NPS	21.24 \pm 10.05			

172

173 **Discussion**

174 The study showed that the saliva RT-PCR (RNA extraction free method) has high sensitivity and
175 specificity and is comparable to the gold standard nasopharyngeal swab (NPS). Studies reported
176 earlier have shown similar results, where the sensitivity of saliva samples in detecting SARS-
177 COV-2 ranges from 73% to 91% and the specificity ranges from 97 % to 98.9% [18,19,20].

178 In our study the PPV (91.6%) and NPV (91.03%) was high for direct (RNA extraction free
179 method) saliva testing and similar results have been reported in other studies also [18,20].

180 The agreement between the results of saliva and NPS samples was good based on kappa
181 coefficient. The values were similar to other studies that have demonstrated 0.68 to 0.85 kappa
182 coefficient on agreement of salivary samples with the nasopharyngeal swabs [18,21]. Thus, this
183 study demonstrates that even with the RNA extraction free method the results agreement was high
184 between salivary and NPS samples.

185 However, in this study we observed that there were variations in the sensitivity and specificity in
186 the direct (RNA extraction free method) method based on the kit used. The Thermo Fischer-
187 Applied biosystems showed high sensitivity, PPV and NPV, whereas the BGI kit showed high
188 specificity and better agreement (kappa coefficient) between the results of saliva and NPS samples.

189 In the BGI kit the mean Ct values of both saliva and NPS was low compared to the mean Ct values
190 of saliva and NPS samples when Thermo fisher Applied Biosystem Kit was used. But both the kits
191 did not show any statistically significant difference in Ct values between the saliva and the NPS
192 samples. Similarly, studies have reported that there was no significant difference in the Ct values
193 of saliva and the NPS samples [22]. There are studies that have also reported significant difference
194 in the Ct values of saliva and NPS samples [23].The differences reported might be because earlier

195 studies have also showed that the saliva viral load declines more rapidly than NPS viral load after
196 initial two weeks of infection [24] which might have played a role in the significant difference in
197 the Ct values.

198 This study also observed significant correlation between the Ct values of saliva and NPS samples
199 and the correlation was better observed with the BGI kit, similar significant correlations were
200 reported in other studies [25].

201 From the results obtained, our study found that the drawback of the Applied Biosystems kit was
202 the number of invalid reports, which was significantly higher than the BGI kit. Which might be
203 because it is a multiplex assay and hence the presence of impurities or inhibitors in body fluids
204 interferes with the assay [26].

205 In the RNA extraction free method 3.9 % and 1.2% of the patients with a negative NPS had a
206 positive saliva sample result using the BGI kit and the Thermofisher Applied Biosystems kit
207 respectively. Other studies have also reported similar results where saliva samples showed higher
208 detection rates at controlled conditions [21,27]. This variation in results might be due to
209 preanalytical factors affecting the quality of the NPS samples used. The preanalytical factors
210 include the skill of the trained healthcare professional, the technique used, transport media,
211 temperature control and storage conditions[13]. The effect of these pre-analytical factors are less
212 pronounced in the saliva sample if 1-hour fasting is strictly applied.

213 Hence the study shows that saliva can be a reliable alternative for SARS- COV-2 testing and
214 similar studies have shown saliva to be a reliable sample even without the RNA extraction process.
215 [28] As the sensitivity and the PPV of the saliva sample is high and comparable to NPS sample,
216 this method can be highly useful in identifying patients early and isolating them to limit spread.

217 During the current pandemic where mass testing is mandated, the RNA extraction free method of
218 saliva sample is time saving and it precludes the need for specific collection devices, transport
219 media and skilled personnel. This can considerably reduce the burden on the health care industry
220 and staff. Moreover, when manufacturing and transport of goods have taken a hard hit in the
221 current crisis, these simple techniques enable testing of low volume and minimally processed
222 sample and is not affected by the supply chain constraints[15].

223

224 **Strengths and Limitations**

225 The strength of this study is that it not only evaluates the RNA extraction free method for molecular
226 testing of SARS-COV-2 of salivary sample, but also validates and compares different RT – PCR
227 kits for extraction free method of saliva sample. Not many studies have evaluated these.

228 Limitation of this study is that the study did not consider the number of days the patient has been
229 infected or symptomatic in analysis, as the viral load in the saliva varies with the stages of infection
230 which might have affected the results of the study.

231

232 **Conclusion**

233 The study concludes that the RNA extraction free method for molecular testing of SARS-COV-2
234 in salivary sample serves as an effective alternative for COVID-19 testing. We like to emphasize
235 on the fact that the nature of salivary sample collected, the method of extraction, RT- PCR kit used
236 can all influence the results. Yet saliva collection is simple, no specialized devices needed for
237 collection, the extraction free method saves time, effort and cost that enables mass testing and
238 quick and early reporting to control spread. Thus, despite the limitation's RNA extraction free

239 method for molecular testing of SARS-COV-2 in salivary sample can be broadly implemented as
240 an alternative for SARS-COV-2 detection.

241 **Declarations**

242 **Ethics approval and consent to participate**

243 The Ethics approval was obtained from Department of Health (DOH) Institutional review board
244 (IRB), Abu Dhabi

245 All methods were carried out in accordance with relevant guidelines and regulations. The
246 Department Of Health (DOH) Institutional review board (IRB), Abu Dhabi

247 Consent for publication – written informed consent were obtained from all the participants

248 **Data Availability**

249 The data is available with the author, Dr. Sally, Director of Biogenix G42 lab and will be produced
250 on request

251 **Conflict of interest**

252 The authors declare that they have no conflict of interest regarding the publication of this paper

253 **Funding statement**

254 The study was not funded by any funding body, it was done in Biogenix lab as a part of research

255 **Acknowledgments**

256 We acknowledge all lab personnel, skilled technicians who provided help during the research and
257 preparation of the manuscript

258 **References**

- 259 1. World Health Organization (WHO) Coronavirus disease (COVID-19) Dashboard.
260 Available at: <https://covid19.who.int/> (Accessed on 20 December 2020)
- 261 2. Lippi G, Simundic AM, Plebani M. Potential preanalytical and analytical vulnerabilities in
262 the laboratory diagnosis of coronavirus disease 2019 (COVID-19). *Clin Chem Lab Med.*
263 (2020) 58:1070–6. doi: 10.1515/cclm-2020- 0285
- 264 3. <https://onlinelibrary.wiley.com/doi/full/10.1111/omi.12289>
- 265 4. Galhardo LF, Ruivo GF, de Oliveira LD, et al. Inflammatory markers in saliva for
266 diagnosis of sepsis of hospitalizes patients. *Eur J Clin*
267 *Invest* 2020;**50**:e13219. doi:10.1111/eci.13219pmid:http://www.ncbi.nlm.nih.gov/pubme
268 d/32129475
- 269 5. Marques Filho JS, Gobara J, da Silva Salomao GV, et al. Cytokine levels and human
270 herpesviruses in saliva from clinical periodontal healthy subjects with peri-implantitis: a
271 case-control study. *Mediators Inflamm* 2018;**2018**:1–
272 7.doi:10.1155/2018/6020625pmid:http://www.ncbi.nlm.nih.gov/pubmed/30158834
- 273 6. Niedrig M, Patel P, El Wahed AA, Schadler R, Yactayo S. Find the right sample: a study
274 on the versatility of saliva and urine samples for the diagnosis of emerging viruses. *BMC*
275 *Infect Dis.* (2018) 18:707. 10.1186/s12879-018-3611-x

- 276 7. Castro T, Sabalza M, Barber C, et al. Rapid diagnosis of Zika virus through saliva and
277 urine by loop-mediated isothermal amplification (lamp). *J Oral*
278 *Microbiol* 2018;10:1510712. [doi:10.1080/20002297.2018.1510712](https://doi.org/10.1080/20002297.2018.1510712)
- 279 8. Lima DP, Diniz DG, Moimaz SAS, et al. Saliva: reflection of the body. *Int J Infect*
280 *Dis* 2010;14:e184–8. [doi:10.1016/j.ijid.2009.04.022](https://doi.org/10.1016/j.ijid.2009.04.022)
- 281 9. Li Y, Ren B, Peng X, Hu T, Li J, Gong T, Tang B, Xu X, Zhou X. Saliva is a non-negligible
282 factor in the spread of COVID-19. *Molecular Oral Microbiology*. 2020 May 4.
- 283 10. Guo L Ren L, Yang S et al. Profiling early humoral response to diagnose novel coronavirus
284 disease (COVID-19). *Clin Infect Dis*; 2020; [doi:10.1093/cid/ciaa310](https://doi.org/10.1093/cid/ciaa310).
- 285 11. Sabino-Silva R, Jardim A C G, Siqueira W L. Coronavirus COVID-19 impacts to dentistry
286 and potential salivary diagnosis. *Clin Oral Investig* 2020; **24**: 1619-1621.
- 287 12. To K K-W, Tsang O T-Y, Leung W-S et al. Temporal profiles of viral load in posterior
288 oropharyngeal saliva samples and serum antibody responses during infection by SARS-
289 CoV-2: an observational cohort study. *Lancet Infect Dis* 2020; S1473-S3099. [doi:](https://doi.org/10.1016/S1473-3099(20)30196-1)
290 [10.1016/S1473-3099\(20\)30196-1](https://doi.org/10.1016/S1473-3099(20)30196-1).
- 291 13. Wyllie AL, Fournier J, Casanovas-Massana A, Campbell M, Tokuyama M, Vijayakumar
292 P, Warren JL, Geng B, Muenker MC, Moore AJ, Vogels CB. Saliva or nasopharyngeal
293 swab specimens for detection of SARS-CoV-2. *New England Journal of Medicine*. 2020
294 Sep 24;383(13):1283-6.
- 295 14. Bujang MA, Adnan TH. Requirements for Minimum Sample Size for Sensitivity and
296 Specificity Analysis. *J Clin Diagn Res*. 2016 Oct;10(10):YE01-YE06. [doi:](https://doi.org/10.7860/JCDR/2016/18129.8744)
297 [10.7860/JCDR/2016/18129.8744](https://doi.org/10.7860/JCDR/2016/18129.8744). Epub 2016 Oct 1. PMID: 27891446; PMCID:
298 PMC5121784. Vogels CB, Watkins AE, Harden CA, Brackney DE, Shafer J, Wang J,

- 299 Caraballo C, Kalinich CC, Ott IM, Fauver JR, Kudo E. SalivaDirect: A simplified and
300 flexible platform to enhance SARS-CoV-2 testing capacity. Med. 2020 Dec 26.
- 301 15. Vogels CB, Watkins AE, Harden CA, Brackney DE, Shafer J, Wang J, Caraballo C,
302 Kalinich CC, Ott IM, Fauver JR, Kudo E. SalivaDirect: A simplified and flexible platform
303 to enhance SARS-CoV-2 testing capacity. Med. 2020 Dec 26.
- 304 16. BGI. Real-Time Fluorescent RT-PCR Kit for Detecting SARS-2019-nCoV. Instructions
305 for Use. Available at: [https://www.bgi.com/us/wp-](https://www.bgi.com/us/wp-content/uploads/sites/2/2020/03/instructions-for-use.pdf)
306 [content/uploads/sites/2/2020/03/instructions-for-use.pdf](https://www.bgi.com/us/wp-content/uploads/sites/2/2020/03/instructions-for-use.pdf)
- 307 17. Applied Biosystems. Thermo fisher TaqPath™ COVID-19 CE-IVD RT-PCR Kit
308 Instructions for use. Available at: [https://assets.thermofisher.com/TFS-](https://assets.thermofisher.com/TFS-Assets/LSG/manuals/MAN0019215_TaqPathCOVID-19_CE-IVD_RT-PCR%20Kit_IFU.pdf)
309 [Assets/LSG/manuals/MAN0019215_TaqPathCOVID-19_CE-IVD_RT-](https://assets.thermofisher.com/TFS-Assets/LSG/manuals/MAN0019215_TaqPathCOVID-19_CE-IVD_RT-PCR%20Kit_IFU.pdf)
310 [PCR%20Kit_IFU.pdf](https://assets.thermofisher.com/TFS-Assets/LSG/manuals/MAN0019215_TaqPathCOVID-19_CE-IVD_RT-PCR%20Kit_IFU.pdf)
- 311 18. Senok A, Alsuwaidi H, Atrah Y, Al Ayedi O, Al Zahid J, Han A, Al Marzooqi A, Al Heialy
312 S, Altrabulsi B, AbdelWareth L, Idaghdour Y, Ali R, Loney T, Alsheikh-Ali A. Saliva as
313 an Alternative Specimen for Molecular COVID-19 Testing in Community Settings and
314 Population-Based Screening. Infect Drug Resist. 2020 Oct 1;13:3393-3399. doi:
315 10.2147/IDR.S275152. PMID: 33061486; PMCID: PMC7534854.
- 316 19. Czumbel LM, Kiss S, Farkas N, Mandel I, Hegyi AE, Nagy AK, Lohinai Z, Szakacs Z,
317 Hegyi P, Steward MC, Varga G. Saliva as a Candidate for COVID-19 Diagnostic Testing:
318 A Meta-Analysis. medRxiv. 2020 Jan 1.
- 319 20. Pasomsub E, Watcharananan SP, Boonyawat K, Janchompoo P, Wongtabtim G, Sukswan
320 W, Sungkanuparp S, Phuphuakrat A. 2020. Saliva sample as a non-invasive specimen for

321 the diagnosis of coronavirus disease 2019: a cross-sectional study. *Clin Microbiol Infect*
322 [epub ahead of print 15 May 2020].

323 21. McCormick-Baw C, Morgan K, Gaffney D, Cazares Y, Jaworski K, Byrd A, Molberg K,
324 Cavuoti D. 2020. Saliva as an alternate specimen source for detection of SARS-CoV-2 in
325 symptomatic patients using Cepheid Xpert Xpress SARS-CoV-2. *J Clin Microbiol.*
326 58(8):e01109-20.

327 22. Procop GW, Shrestha NK, Vogel S, Van Sickle K, Harrington S, Rhoads DD, Rubin BP,
328 Terpeluk P. A direct comparison of enhanced saliva to nasopharyngeal swab for the
329 detection of SARS-CoV-2 in symptomatic patients. *Journal of clinical microbiology.* 2020
330 Oct 21;58(11).

331 23. Torres M, Collins K, Corbit M, Ramirez M, Winters CR, Katz L, Ross M, Relkin N, Zhou
332 W. Comparison of saliva and nasopharyngeal swab SARS-CoV-2 RT-qPCR testing in a
333 community setting. *J Infect.* 2020 Nov 17:S0163-4453(20)30710-6. doi:
334 10.1016/j.jinf.2020.11.015. Epub ahead of print. PMID: 33217472; PMCID:
335 PMC7670897.

336 24. Iwasaki S, Fujisawa S, Nakakubo S, Kamada K, Yamashita Y, Fukumoto T. Comparison
337 of SARS-CoV-2 detection in nasopharyngeal swab and saliva. *J Infect.* 2020:e145–e147.
338 doi: 10.1016/j.jinf.2020.05.071.

339 25. Paulo H. Braz-Silva , Ana C. Mamana , Camila M. Romano , Alvina C. Felix , Anderson
340 V. de Paula , Noeli E Fereira , Lewis F. Buss , Tania R. Tozetto-Mendoza , Rafael A. V.
341 Caixeta , Fabio E. Leal , Regina M. Z. Grespan , João C. S. Bizário , Andrea B. C. Ferraz
342 , Dipak Sapkota , Simone Giannecchini , Kelvin K. To , Alain Doglio & Maria C. Mendes-
343 Correa (2021) Performance of at-home self-collected saliva and nasal-oropharyngeal

- 344 swabs in the surveillance of COVID-19, *Journal of Oral Microbiology*, 13:1, 1858002,
345 DOI: 10.1080/20002297.2020.1858002
- 346 26. Schrader C, Schielke A, Ellerbroek L, Johne R. PCR inhibitors - occurrence, properties
347 and removal. *J Appl Microbiol*. 2012 Nov;113(5):1014-26. doi: 10.1111/j.1365-
348 2672.2012.05384.x. Epub 2012 Jul 24. PMID: 22747964.
- 349 27. Fukumoto T, Iwasaki S, Fujisawa S, Hayasaka K, Sato K, Oguri S, Taki K, Nakakubo S,
350 Kamada K, Yamashita Y, Konno S. Efficacy of a novel SARS-CoV-2 detection kit without
351 RNA extraction and purification. *International Journal of Infectious Diseases*. 2020 Sep
352 1;98:16-7.
- 353 28. Smyrlaki, I., Ekman, M., Lentini, A. et al. Massive and rapid COVID-19 testing is feasible
354 by extraction-free SARS-CoV-2 RT-PCR. *Nat Commun* **11**, 4812 (2020).
355 <https://doi.org/10.1038/s41467-020-18611-5>