

1 **TITLE SARS-CoV-2 Epidemiology on a Public University Campus in Washington State**

2 **AUTHORS**

3 Ana A. Weil, MD, MPH¹, Sarah L. Sohlberg, BS¹, Jessica A. O'Hanlon, BS¹, Amanda M. Casto,
4 MD, PhD¹, Anne W Emanuels, MPH¹, Natalie K. Lo, MPH, OTR/L¹, Emily P. Greismer, BS¹,
5 Ariana M. Magedson, BSW¹, Naomi C. Wilcox, MPH¹, Ashley E. Kim, BS¹, Lewis Back¹,
6 Christian D. Frazar, MS², Ben Pelle, BS³, Thomas R. Sibley, BA³, Misja Ilcisin, BS³, Jover Lee,
7 BS³, Erica L. Ryke, MS³, J. Chris Craft, BS⁴, Kristen M. Schwabe-Fry, BS⁴, Kairsten A. Fay,
8 BS³, Shari Cho, MSc^{2,4}, Peter D.Han, BS, MS², Sarah J. Heidi, MS², Brian A. Pfau, BS²,
9 Melissa Truong, BS², Weizhi Zhong, BS², Sanjay R. Srivatsan, BS², Katia F. Harb, MS⁵,
10 Geoffrey S. Gottlieb, MD, PhD^{1,5}, James P. Hughes, PhD⁶, Deborah A. Nickerson, PhD^{2,4},
11 Christina M. Lockwood, PhD^{2,4}, Lea M. Starita, PhD^{2,4}, Trevor Bedford, PhD^{3,4}, Jay A. Shendure,
12 MD, PhD^{2,4}, Helen Y. Chu, MD, MPH¹

13

14 **AUTHOR AFFILIATIONS**

15 1 Department of Medicine, Division of Allergy and Infectious Diseases, University of
16 Washington, Seattle, WA USA

17 2 Department of Genome Sciences, University of Washington, Seattle, WA USA

18 3 Fred Hutchinson Cancer Research Center, Seattle, WA USA

19 4 Brotman Baty Institute for Precision Medicine, Seattle, WA USA

20 5 Department of Environmental Health and Safety, University of Washington, Seattle, WA USA

21 6 Department of Biostatistics, University of Washington, Seattle, WA USA

22

23

24 **ABSTRACT**

25 **Background:** Testing programs have been utilized as part of SARS-CoV-2 mitigation strategies
26 on university campuses, and it is not known which strategies successfully identify cases and
27 contain outbreaks.

28 **Objective:** Evaluation of a testing program to control SARS-CoV-2 transmission at a large
29 university.

30 **Design:** Prospective longitudinal study using remote contactless enrollment, daily mobile
31 symptom and exposure tracking, and self-swab sample collection. Individuals were tested if the
32 participant was (1) exposed to a known case, developed new symptoms, or reported high-risk
33 behavior, (2) a member of a group experiencing an outbreak, or (3) at baseline upon enrollment.

34 **Setting:** An urban, public university during Autumn quarter of 2020.

35 **Participants:** Students, staff, and faculty.

36 **Measurements:** SARS-CoV-2 PCR testing was conducted, and viral genome sequencing was
37 performed.

38 **Results:** We enrolled 16,476 individuals, performed 29,783 SARS-CoV-2 tests, and detected
39 236 infections. Greek community affiliation was the strongest risk factor for testing positive.
40 75.0% of positive cases reported at least one of the following: symptoms (60.8%), exposure
41 (34.7%), or high-risk behaviors (21.5%). 88.1% of viral genomes (52/59) sequenced from
42 Greek-affiliated students were genetically identical to at least one other genome detected,
43 indicative of rapid SARS-CoV-2 spread within this group, compared to 37.9% (11/29) of
44 genomes from non-Greek students and employees.

45 **Limitations:** Observational study.

46 **Conclusion:** In a setting of limited resources during a pandemic, we prioritized testing of
47 individuals with symptoms and high-risk exposure during outbreaks. Rapid spread of SARS-
48 CoV-2 occurred within outbreaks without evidence of further spread to the surrounding

49 community. A testing program focused on high-risk populations may be effective as part of a
50 comprehensive university-wide mitigation strategy to control the SARS-CoV-2 pandemic.

51

52 FUNDING STATEMENT This study was funded by the United States Senate and House of
53 Representative Bill 748, Coronavirus Aid, Relief, and Economic Security Act.

54

55

56

57 **INTRODUCTION**

58 Universities are characterized by congregate living, in-person learning, and active social
59 environments, all of which may contribute to rapid spread of infectious diseases. Between May
60 and August, persons aged 20-29 accounted for over 20% of confirmed COVID-19 cases
61 nationwide, and an even higher proportion in Washington state [1][2]. Numerous outbreaks on
62 university campuses were observed early in the SARS-CoV-2 pandemic [3]. Surveillance
63 strategies ranged from pooled testing of asymptomatic persons to wastewater analysis, with
64 substantial heterogeneity across universities and no clear federal guidance [3-6]. Nationwide
65 shortages of testing supplies and reagents have prevented many universities, including ours,
66 from adopting a strategy of testing all members of the university community on a regular basis.
67 Given these constraints, we sought to identify an approach that would permit early identification
68 of cases and containment of spread [7][8].

69

70 **METHODS**

71 **Setting**

72 This study was conducted at a large public university in Seattle, Washington, composed of
73 approximately 60,000 students and 30,000 faculty and staff [9][10]. In Autumn 2020, the
74 university opened with hybrid in-person and remote classes, and residence halls were
75 populated at a limited capacity [11]. The study population included students, staff, and faculty
76 affiliated with the main campus and two smaller campuses located 15 and 35 miles from the
77 main campus.

78 **Study Enrollment**

79 Enrollment began September 24, 2020 during student resident move-in and continued during
80 the study period. Eligibility criteria included living on-campus or within the main or satellite
81 campus geographic area (approximately 100-mile radius), a valid university identification
82 number, the ability to consent in English, and university attendance for class or work at least
83 one day per month, either in-person or remotely. Exclusion criteria were living outside of the
84 geographic area (i.e., people working remotely but living in another state) and age under 13
85 years. Participants completed informed consent and an online questionnaire that included
86 baseline risk behaviors and demographic information. At enrollment, participants indicated a
87 preference for either email or text communication. Study data were managed using Project
88 REDCap software [12][13]. Individuals were stratified into risk tiers based on time spent on-
89 campus, the number of individuals in their household, and university affiliation (Supplemental
90 Table 1). Due to ongoing outbreaks in the Greek community, university and Greek community
91 leadership strongly encouraged Greek student enrollment during the study.

92 **Attestations and Invitations to Test**

93 Testing was offered for four reasons: (1) Attestation positivity; (2) Outbreaks; (3) Baseline
94 surveillance; and (4) Holidays. Due to limited testing resources, we employed a hierarchical

95 approach for invitations to test. "Attestation positive" study participants were prioritized, followed
96 by outbreak invitations, and finally baseline and holiday invitations.

97 The daily attestation survey was used to determine testing eligibility. A participant was defined
98 as "attestation positive" if they reported "yes" to the following questions: In the last 24 hours,
99 have you 1) experienced new symptoms ("symptoms"), 2) been exposed to a COVID-19
100 positive individual ("exposure"), or 3) attended a high-risk gathering ("gathering", defined as
101 attending an indoor gathering of >10 people without social distancing or mask-wearing
102 [Appendix 5]). Individuals who attested positive were offered testing, and repeat testing was
103 offered up to every three days. If a "gathering" or "exposure" attestation was reported, a testing
104 invite was delayed 48 hours to account for the incubation period. Outbreak testing was offered
105 every three days to individuals of a community once an outbreak was identified by the university
106 public health officials. Holiday testing was offered before and after the Thanksgiving break
107 November 17th to December 6th.

108 **Testing Mechanisms**

109 Testing was conducted at in-person kiosks or via mail-in swab kits (Appendix D). Participants
110 affiliated with the main campus who received a testing invitation were offered in-person
111 appointments of their choosing within 72 hours. Samples were collected by observed anterior
112 nasal self-swab at on-campus kiosks. For participants affiliated with a satellite campuses or who
113 indicated mobility restrictions precluding attendance at an on-campus kiosk, a self-testing kit
114 was sent to and picked up from their residence using rapid courier services [14][15].

115 **Laboratory Methods and Results Reporting**

116 Samples collected at kiosks were transported to the Northwest Genomics Center at the
117 University of Washington and tested for SARS-CoV-2 using an RT-qPCR laboratory developed
118 test (LDT). The laboratory is clinically certified to test for SARS-CoV-2 by the Washington State
119 Department of Health Medical Testing Site. The RT-qPCR consists of assays for two SARS-
120 CoV-2 targets in duplicate and the human marker RNase P across four multiplexed reactions

121 (see Supplemental Text), [16]). A sample was considered positive if three or four replicates for
122 RNase P had a cycle threshold (Ct) value <36 and SARS-CoV-2 had a cycle threshold (Ct)
123 value <40. If only two SARS-CoV-2 replicate reactions were positive, the result was defined as
124 inconclusive. Inconclusive results were regarded as low-positive results and participants were
125 counselled identically to participants with a positive result [17]. If SARS-CoV-2 was not detected
126 or detected in only one replicate, the test was considered negative. Samples were defined as
127 failed and considered 'never tested' if RNase P was undetected in two or more reactions, or if
128 there was a laboratory or operator error. Mid-study (November 18, 2020), we implemented an
129 extraction-free testing method that yielded similar results, but Ct values from the two methods
130 are not directly comparable [16].

131 Results were provided to participants through a research report hosted on a secure online portal
132 that was accessed using a unique barcode identifier and date of birth. Cases were contacted by
133 university, county, or state public health staff and contact tracing was initiated.

134 Viral genome sequencing was attempted on all positive samples with a Ct value of 30 or less
135 using a hybrid capture enrichment method [18] or a COVID-seq amplicon method (Illumina).
136 Raw sequencing reads were processed using the Seattle Flu Study Assembly Pipeline
137 (available on GitHub [19]). SARS-CoV-2 sequences were aligned and phylogenetic trees were
138 constructed using the Nextstrain augur software [20]. Phylogenetic trees were visualized using
139 the Nextstrain auspice software. All assembled genomes were publicly deposited to the Global
140 Initiative on Sharing All Influenza Data (gisaid.org, [21]) and to Genbank immediately after data
141 generation.

142 **University-Wide Prevention and Mitigation Strategy**

143 Prior to and during Autumn quarter, the university deployed a communications campaign
144 focused on masking, social distancing, handwashing, and disinfection of high-touch surfaces.
145 Contact tracing was conducted by university public health officials for all students, staff, and
146 faculty, except off-campus Greek community cases, which were handled by county public

147 health. Isolation and quarantine housing was provided for infected students that lived in campus
148 housing. University members also had access to free city SARS-CoV-2 testing sites or testing
149 through their routine healthcare providers, outside of this research study.

150 **Statistical methods**

151 Positive and inconclusive results were counted as cases. Confidence intervals were calculated
152 using 95% confidence levels and p-values were considered statistically significant at alpha level
153 of 0.05. Statistical testing for the comparison of averages was completed using Welch's two
154 sample t-tests. For multivariate regression, the reference group for race was White and non-
155 Latinx/Hispanic for ethnicity.

156 COVID-19 cases were categorized as symptomatic, presymptomatic, asymptomatic, and
157 possible asymptomatic. A case who tested positive/inconclusive was defined as "symptomatic" if
158 they reported symptoms on their daily attestation survey within the seven days prior to testing or
159 if they reported symptoms on the day of testing. "Presymptomatic" was defined as those who
160 only reported symptoms in the week following testing, either on their daily attestation or follow-
161 up survey. If no symptoms were reported before or after testing on the daily attestation or follow-
162 up survey, they were considered "asymptomatic." Participants who did not complete their daily
163 attestations or the follow-up survey, and who reported no symptoms at the time of testing were
164 labeled as "possible asymptomatic" cases.

165 A Generalized Estimating Equation with a logit link, robust variance, and an independent
166 working correlation matrix was used to analyze risk factors for testing positive, allowing for
167 dependence within individuals longitudinally. Odds ratios (OR) and their 95% confidence
168 intervals were calculated adjusting for race, Latinx/Hispanic ethnicity, university or Greek
169 affiliation, number of household members, attesting positive, mask wearing behavior, social
170 distancing behavior, and on-campus frequency. All analyses were performed in R version 3.6.1.

171 **Human Subjects**

172 The University of Washington Institutional Review Board approved this study. All participants (or
173 their guardians) provided written informed consent.

174 **Role of the Funding Source**

175 This study was funded by the United States Senate and House of Representative Bill 748,
176 Coronavirus Aid, Relief, and Economic Security Act. The funding source had no role in the study
177 design, conduct, or reporting.

178

179

180 **RESULTS**

181 Between September 24 and December 18, 2020, 16,476 individuals enrolled in the study, and
182 29,783 samples from 11,644 unique individuals were collected and tested for SARS-CoV-2 (see
183 Supplemental Figure 1). Due to remote course instruction, many students were not living in the
184 Seattle area. 25.5% (15,930/62,591) of matriculated students during Autumn quarter were
185 enrolled in at least one course with in-person instruction, and 19.9% (8,204/41,296) of all
186 matriculated undergraduates and 18.4% (2,719/14,765) of graduate students participated in the
187 study [22-24]. More female (61.4% in the study vs. 54% in the student body), and White
188 students (62.6% in the study vs. 40.8% in the student body; Supplemental Figure 2 and
189 Supplemental Table 3) were enrolled. Of an estimated 4,100 Greek community students in the
190 Seattle area at the time of the study, 2,672 (65.2%) were enrolled.

191 The daily attestation survey was completed by a mean of 47.7% (6,203) participants per day
192 (Figure 1A,1B). Among participants attesting positive over the study period, 40.4% reported
193 symptoms, 12.1% reported exposure, 36.4% reported gathering, and 11.1% reported multiple
194 reasons. During the study, 409 (2.5%) participants opted to stop receiving daily attestation
195 alerts, and were given the option of completing attestations on the study website. Results on
196 preventative behaviors are listed in the Supplemental Results.

197 **SARS-CoV-2 Testing Results**

198 A total of 11,633 (70.6%) participants were tested at least once (Supplemental Table 2). Tests
199 were resultd and available for participants to view online the day of sample collection (26.3%)
200 or the following day (62.6%), and a minority of students received their results >24 hours after
201 testing. 265 out of 29,783 samples (0.80%) tested positive or inconclusive for SARS-CoV-2
202 (Table 2). Among the 265 cases, there were 60.8% (61) symptomatic, 19.6% (52)
203 presymptomatic, 3.4% (9) asymptomatic, and 16.2% (43) possible asymptomatic. Symptoms
204 reported by SARS-CoV-2 result are reported in Supplemental Table 7. 92/256 (34.7%) of
205 participants testing positive reported exposure to a known positive case. By group, the Greek

206 community had 1.5% test positivity (1796/12045), on-campus dorm residents had 1.2%
207 positivity (43/3507), and staff and faculty had 0.4% (19/4417) and 0.3% (4/1467) positivity,
208 respectively. Test positivity by affiliation and race is shown in Supplemental Table 4.
209 Overall, the university was aware of 745 positive SARS-CoV-2 individuals during Autumn
210 quarter, of which 31.7% (236) were detected as part of this study [24]. For comparison of Ct
211 values during Autumn quarter, we restricted comparisons to the time period before the change
212 in testing methods, since methods used before and after November 18th were not comparable.
213 Among samples collected from September 24th to November 18th, 2020, mean Ct values were
214 higher in presymptomatic compared to symptomatic cases (28.7 vs. 24.2, $p=0.001$) (Figure 2).

215 **Risk Factors for SARS-CoV-2 Infection**

216 On multivariate analysis, Greek affiliation had the strongest association with test positivity (OR
217 2.71, 95% CI: 1.84-4.00, $p<0.001$). Latinx/Hispanic ethnicity (OR 2.12, 95% CI:1.28-2.18,
218 $p=0.002$) and positive attestations (OR 1.86, 95% CI:1.43-2.41, $p<0.001$) were also risk factors
219 for positivity (Supplemental Table 6). Reported frequency of hand washing, mask-wearing, and
220 social distancing were not associated with positivity.

221 **Greek Community Outbreak**

222
223 Thirty cases were identified in the Greek community during the first 10 days of the study, which
224 prompted outbreak testing. Test positivity trends in the Greek community demonstrated a
225 unique epidemiologic curve compared to the non-Greek students, employees, and the county
226 (Figure 3A, [25]). Outbreaks within Greek houses were concurrent, but with unique individual
227 timelines, and involved both fraternities and sororities (Figure 3B). 68.3% of Greek members
228 reported sharing a living space with 6 or more people, compared to only 14.0% of non-Greek
229 students. During 37 days of outbreak testing, serial testing frequently identified individuals who
230 tested negative several times prior to testing positive (Figure 3C).

231 **SARS-CoV-2 Molecular Epidemiology**

233 High coverage genomes were generated for 88 SARS-CoV-2 samples collected from unique
234 individuals between September 27th and November 28th. 59 were collected from Greek-
235 affiliated students, 24 from non-Greek-affiliated students, and 5 from faculty or staff. In Figure
236 4A, a phylogenetic tree of 1700 SARS-CoV-2 genomes collected statewide, including the 88
237 samples from this study, is shown. Multiple study samples appear in each of the four major
238 clades (20A, 20B, 20C, 20G) circulating in the county and state during this timeframe.
239 Most viral genomes from this study (56/88, 63.6%) grouped into one large cluster that included
240 genomes from 49 Greek-affiliated and 7 non-Greek-affiliated students (Clade 20G, large black
241 box Figures 4A, B, C, and Supplemental Figure 3). This cluster also included genomes from
242 four samples collected elsewhere in the state, but outside of our study. Samples in this cluster
243 were collected between September 27th and November 12th, and all samples in this cluster
244 collected prior to October 7th originated from Greek-affiliated students.
245 Closer inspection of this cluster (Figure 4B, C) demonstrates two sub-clusters (branch support
246 values are 0.94 for larger sub-cluster and 0.78 for smaller sub-cluster). Samples within clusters
247 are closely related with a maximum pairwise distance between any two samples in the same
248 sub-cluster of four single nucleotide changes. Molecular clock estimates place the common
249 ancestor of the larger cluster at September 22nd (95% CI: September 1st-29th) and the smaller
250 cluster at September 27th (95% CI: September 20th - October 4th). These two dates occur just
251 prior to the sharp increase in cases observed in our study among Greek students, which peaked
252 on approximately October 7th-8th (Figure 3A). The last sample mapping to either of these sub-
253 clusters was collected November 12th. This date roughly coincides with the end of the Greek
254 outbreak as measured by the percent positivity rate (Figure 3A). Among the over 500 viral
255 genomes collected state-wide after November 12th, including 9 collected by this study, none
256 have descended from the viruses responsible for the Greek community outbreak.
257 Two smaller clusters of viral genomes from this study are shown in Figure 4A (two small boxes)
258 and Supplemental Figures 4, 5. One cluster contains five study genomes, four from Greek-

259 affiliated students and one from a non-Greek student. This cluster has a most recent common
260 ancestor dating to October 31st (95% CI: October 17th-November 1st). The second contains
261 three genomes from non-Greek-affiliated students and one faculty/staff member with a most
262 recent common ancestor dating to November 3rd (95% CI: October 11th-November 16th). Viral
263 genomes from Greek-affiliated students were most likely to cluster with other study samples;
264 88.1% of genomes from Greek-affiliated students were genetically identical to at least one other
265 study sample while only 45.8% of samples from non-Greek students and 0% of samples from
266 faculty/staff were identical to another sample.
267

268 **DISCUSSION**

269 Our large-scale COVID-19 longitudinal cohort study of students, faculty, and staff at a university
270 campus allocated testing based on estimated risk of infection, rather than mass surveillance, a
271 strategy that could be utilized in a pandemic setting with resource limitations. Most cases were
272 identified through daily attestation surveys, and participants reporting a recent exposure to a
273 case had the highest positivity rate of 2.4%, followed by 1.4% for participants reporting
274 symptoms. We found that baseline testing had a much lower positivity rate of 0.6%, and
275 identified only 15% of cases. Consistent with our findings, random testing of asymptomatic
276 people at the University of Pittsburgh yielded a positivity rate of only 0.4% [5]. In contrast, at
277 Duke University, surveillance testing of asymptomatic persons identified half of all cases [4].
278 Several college campus outbreaks have been linked to spread in communities and high-risk
279 groups such as long-term care facility residents, and campus outbreaks are known indicators of
280 broader community transmission [27][28]. In our study, SARS-CoV-2 test positivity rates in the
281 university community were substantially lower than in the surrounding areas. This is likely due in
282 part to increased testing availability, particularly for those without symptoms. However, it is also
283 possible that focused testing of high-risk groups prevented and mitigated campus-wide
284 outbreaks.

285 Outbreak testing was an essential part of our testing strategy. In our study, Greek affiliation was
286 the most important risk factor for testing positive, and more than two-thirds of the cases
287 detected in this study were in Greek-affiliated students. A study conducted at an Arkansas
288 university, in which 91% of identified SARS-CoV-2 cases occurred in Greek-affiliated students,
289 previously implicated this group as high-risk for contracting COVID-19 [29]. We observed cases
290 in more than half of our university's Greek chapters, and the genomic analysis and outbreak
291 dynamics indicate that transmission occurred at a rapid pace both within and among fraternities
292 and sororities. However, later in the quarter, the decreased test positivity rate among this group
293 became comparable to the rates observed among the non-Greek participants. We believe this

294 decline was driven in part by our aggressive testing strategy in Greek-affiliated students, which
295 identified pre- and asymptomatic cases, and was followed by effective contact tracing.
296 Genomic analysis of a subset of the SARS-CoV-2 samples collected in this study revealed
297 major differences between those from Greek community members and those from non-Greek
298 community members. In particular, sequenced samples from Greek students were much more
299 likely than samples from non-Greek students or from faculty/staff to form clusters. Our
300 phylogenetic analysis suggests that most cases of SARS-CoV-2 detected in Greek-affiliated
301 students were the result of campus-related transmission while the genetic diversity observed in
302 non-Greek students or faculty/staff cases were more likely to have been acquired in the
303 community. While most sequenced samples from Greek students formed a single large cluster
304 that may have resulted from a single introduction event of the virus into the Greek community,
305 the sub-division of this large cluster into at least two distinct sub-clusters suggests that viral
306 spread among Greek students occurred as a series of separate transmission events. The
307 hypothesis that social behaviors, rather than housing arrangements, drove the Greek outbreak
308 is supported by our analyses that rapid spread occurred not only within, but also among Greek
309 houses.

310 We did not observe evidence of Greek-related virus spread into the wider community. Given
311 that a limited number of SARS-CoV-2 genomes were sequenced, this does not rule out
312 “spillover” of virus from the Greek outbreak into the outside community, but to date, none of the
313 sequenced SARS-CoV-2 samples collected state-wide appear to descend from the Greek
314 outbreak virus.

315 In addition to members of the Greek community, participants who identified as Latinx or
316 Hispanic experienced increased rates of test positivity. This is consistent with COVID-19
317 incidence rates in Washington State, where Hispanic individuals represented 13% of state
318 residents, but 33% of COVID-19 cases [26]. This highlights the need for more targeted and
319 equitable distribution of testing and contact tracing resources in this high-risk population.

320 Testing and behavioral interventions are cost-effective interventions to control outbreaks on
321 college campuses; however, prioritization of testing is critical, and scarcity of laboratory supplies
322 were present prior to and during our study [30]. We employed several mechanisms to conserve
323 testing resources. First, we used the daily attestation surveys to screen for symptoms predictive
324 of SARS-CoV-2 infection [31] to prioritize tests for those at highest risk. Second, we used mass
325 produced swabs that are shipped dry and eluted in PCR-friendly buffer to allow an extraction-
326 free RT-qPCR method. By avoiding the need for limiting reagents such as transport media and
327 RNA extraction kits, we avoided supply chain challenges, reduced the price per test, and
328 increased the speed of our testing pipeline, enabling us to maintain a 24-hour turnaround time
329 on average while increasing scale.

330 Limitations of this study include that our online format of consent, enrollment, and daily
331 attestation surveys increased participant engagement but was a barrier to participation for
332 individuals with limited technological literacy or access. Additionally, study materials were
333 available in English only. While on-campus testing through this program was often the most
334 convenient testing option, the data included here is not comprehensive in describing on-campus
335 cases, since other testing mechanisms were also available. The race and ethnicity
336 representation in the study population was likely skewed by a university campaign to target,
337 enroll, and test members of the Greek community. Our ability to speculate on the patterns
338 related to Greek community transmission dynamics are impacted both by the availability of other
339 testing mechanisms for members of the university community and inability to sequence all study
340 samples.

341 We report here a strategy for SARS-CoV-2 testing on a large university campus using
342 contactless, rapid enrollment and self-administered testing during Autumn quarter 2020. Most
343 infections were detected in the Greek community, and this group experienced distinct genomic
344 and epidemiologic dynamics compared to other university communities and the surrounding
345 area. This evidence suggests that testing those engaged in high-risk activities, in combination

346 with testing people experiencing symptoms, may be sufficient to stop on-campus transmission
347 and prevent community spread in a setting of limited resources during a pandemic.

348 **ACKNOWLEDGEMENTS**

349 We would like to thank the study participants. We also thank UW Environmental Health & Safety
350 COVID-19 Prevention & Response team (Sheryl Schwartz, Megan Gourley, David Coomes,
351 Casey Adams), UW administration and Incident Command leadership group (Margaret
352 Shepherd, Derek Fulwiler, David Hotz, Josh Gana, Erik Johnson, Pamela Schreiber), Chu Lab
353 and BBI HCT team (Jody Sicuro, Dylan McDonald, Devon McDonald, Madison Contor, Cooper
354 Marshall, Lincoln Pothan, Taylor Wilson, Zack Acker, and Evan Sarantinos), Dr. Janet Englund,
355 Dr. Timothy Uyeki, Dr. Michael Jackson, and Dr. Roy Burstein. We gratefully acknowledge the
356 authors and the originating and submitting laboratories of the sequences from GISAID's EpiFlu
357 Database, on which this research is based.

358

359 **DISCLOSURES**

360 H.Y.C. has served as a consultant for Merck and GlaxoSmithKline and has received research
361 funding from Sanofi Pasteur and research support from Cepheid, Genentech and Ellume.

362 G. S. G. has received research grants and research support from the NIH, UW, the Bill &
363 Melinda Gates Foundation, Gilead Sciences, Alere Technologies, Merck & Co, Janssen
364 Pharmaceutica, Cerus Corporation, ViiV Healthcare, Bristol-Myers Squibb, Roche Molecular
365 Systems, Abbott Molecular Diagnostics, and TheraTechnologies/TaiMed Biologics, Inc.

366

367

368

TABLES AND FIGURES

369

Table 1. Sociodemographic Characteristics of Study Participants

	Students (N=11027)	Staff (N=3898)	Faculty (N=1426)	Other* (N=125)	Overall (N=16476)
Age (years)					
Median [Min, Max]	20 [16, 78]	40 [20, 81]	45 [21, 83]	31 [19, 77]	23 [16, 83]
Age Group					
16-17	52 (0.5%)	0 (0%)	0 (0%)	0 (0%)	52 (0.3%)
18-49	10921 (99.0%)	2709 (69.5%)	870 (61.0%)	105 (84.0%)	14605 (88.6%)
50-64	38 (0.3%)	1051 (27.0%)	387 (27.1%)	12 (9.6%)	1488 (9.0%)
65+	16 (0.1%)	136 (3.5%)	168 (11.8%)	8 (6.4%)	328 (2.0%)
Sex assigned at birth[†]					
Female	6769 (61.4%)	2473 (63.4%)	765 (53.6%)	75 (60.0%)	10082 (61.2%)
Male	4211 (38.2%)	1411 (36.2%)	658 (46.1%)	50 (40.0%)	6330 (38.4%)
Race[‡]					
American Indian or Alaska Native	45 (0.4%)	17 (0.4%)	6 (0.4%)	0 (0%)	68 (0.4%)
Asian	2736 (24.8%)	486 (12.5%)	189 (13.3%)	21 (16.8%)	3432 (20.8%)
Black or African American	220 (2.0%)	127 (3.3%)	34 (2.4%)	2 (1.6%)	383 (2.3%)
Multiple Races	1099 (10.0%)	229 (5.9%)	44 (3.1%)	8 (6.4%)	1380 (8.4%)
Native Hawaiian or other Pacific Islander	30 (0.3%)	26 (0.7%)	1 (0.1%)	0 (0%)	57 (0.3%)
Other	333 (3.0%)	109 (2.8%)	38 (2.7%)	3 (2.4%)	483 (2.9%)
White	6353 (57.6%)	2805 (72.0%)	1073 (75.2%)	83 (66.4%)	10314 (62.6%)
Missing	211 (1.9%)	99 (2.5%)	41 (2.9%)	8 (6.4%)	359 (2.2%)
Hispanic/Latinx Ethnicity	896 (8.1%)	265 (6.8%)	79 (5.5%)	12 (9.6%)	1252 (7.6%)
UW Greek Member	2672 (24.2%)				
Housing[§]					
Greek (Chapter House and Live Out)	1763 (16.0%)	0 (0%)	1 (0.1%)	1 (0.8%)	1765 (10.7%)
Off-Campus Housing	7116 (64.5%)	3863 (99.1%)	1423 (99.8%)	124 (99.2%)	12526 (76.0%)
On-Campus Housing	2101 (19.1%)	11 (0.3%)	0 (0%)	0 (0%)	2112 (12.8%)
Shelter, transitional housing, or other	47 (0.4%)	24 (0.6%)	2 (0.1%)	0 (0%)	73 (0.4%)
On-campus frequency this quarter[¶]					
Do not come to campus	3345 (30.3%)	916 (23.5%)	252 (17.7%)	17 (13.6%)	4530 (27.5%)
One day a week or less	3301 (29.9%)	1161 (29.8%)	583 (40.9%)	41 (32.8%)	5086 (30.9%)
Two days a week or more	4381 (39.7%)	1820 (46.7%)	591 (41.4%)	67 (53.6%)	6859 (41.6%)
Registered for In-Person Classes	1712 (15.5%)				
Tested for SARS-CoV-2 prior to enrollment	6556 (59.5%)	1625 (41.7%)	632 (44.3%)	67 (53.6%)	8880 (53.9%)
Campus					
Main Campus	10539 (95.6%)	3650 (93.6%)	1285 (90.1%)	124 (99.2%)	15598 (94.7%)
Satellite Campus A	191 (1.7%)	95 (2.4%)	60 (4.2%)	0 (0%)	346 (2.1%)
Satellite Campus B	297 (2.7%)	153 (3.9%)	81 (5.7%)	1 (0.8%)	532 (3.2%)
In the past 7 days, how often did you wear a face mask in public to protect others from getting sick?[#]					
Always	10719 (97.2%)	3800 (97.5%)	1373 (96.3%)	122 (97.6%)	16014 (97.2%)
Sometimes	297 (2.7%)	95 (2.4%)	50 (3.5%)	3 (2.4%)	445 (2.7%)

Never	2 (0.0%)	0 (0%)	0 (0%)	0 (0%)	2 (0.0%)
In the past 7 days, how often did you try to stay 6 feet away from people who don't live with you?*					
Always	7552 (68.5%)	3161 (81.1%)	1211 (84.9%)	98 (78.4%)	12022 (73.0%)
Sometimes	3418 (31.0%)	728 (18.7%)	214 (15.0%)	27 (21.6%)	4387 (26.6%)
Never	42 (0.4%)	5 (0.1%)	1 (0.1%)	0 (0%)	48 (0.3%)

370 **Those in the 'Other' affiliation category included postdoctoral fellows, externs, volunteers, and*
 371 *other university affiliates*

372 *† 4 participants reported "Other" for sex, and 60 had missing sex*

373 *‡359 participants had missing race and 145 participants chose "Prefer not to say" for*
 374 *Hispanic/Latinx Ethnicity*

375 *§ A Greek 'Live Out' is a private house or apartment that is shared by members of the same*
 376 *Greek chapter. On-campus housing was defined as dormitories, apartments, and family units.*

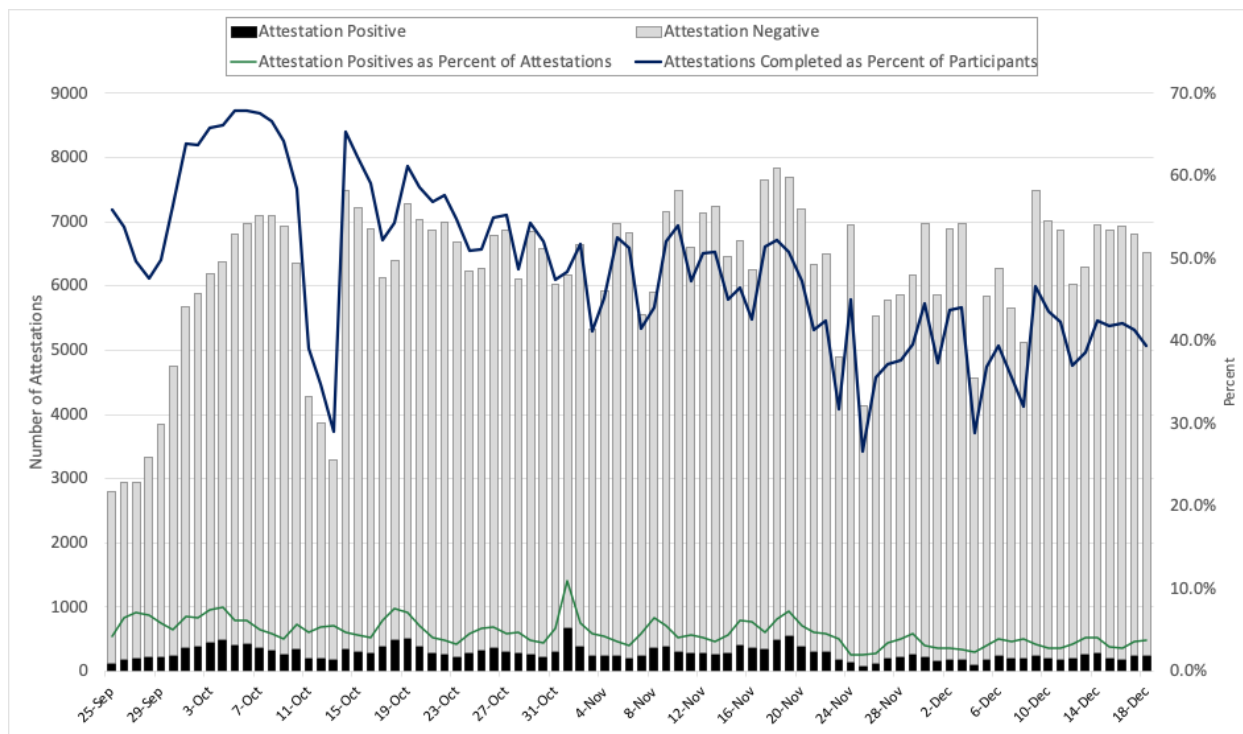
377 *¶1 participant had missing 'Frequency on-campus'*

378 *#15 participants did not answer 'In the past 7 days, how often did you wear a face mask in public*
 379 *to protect others from getting sick?'*

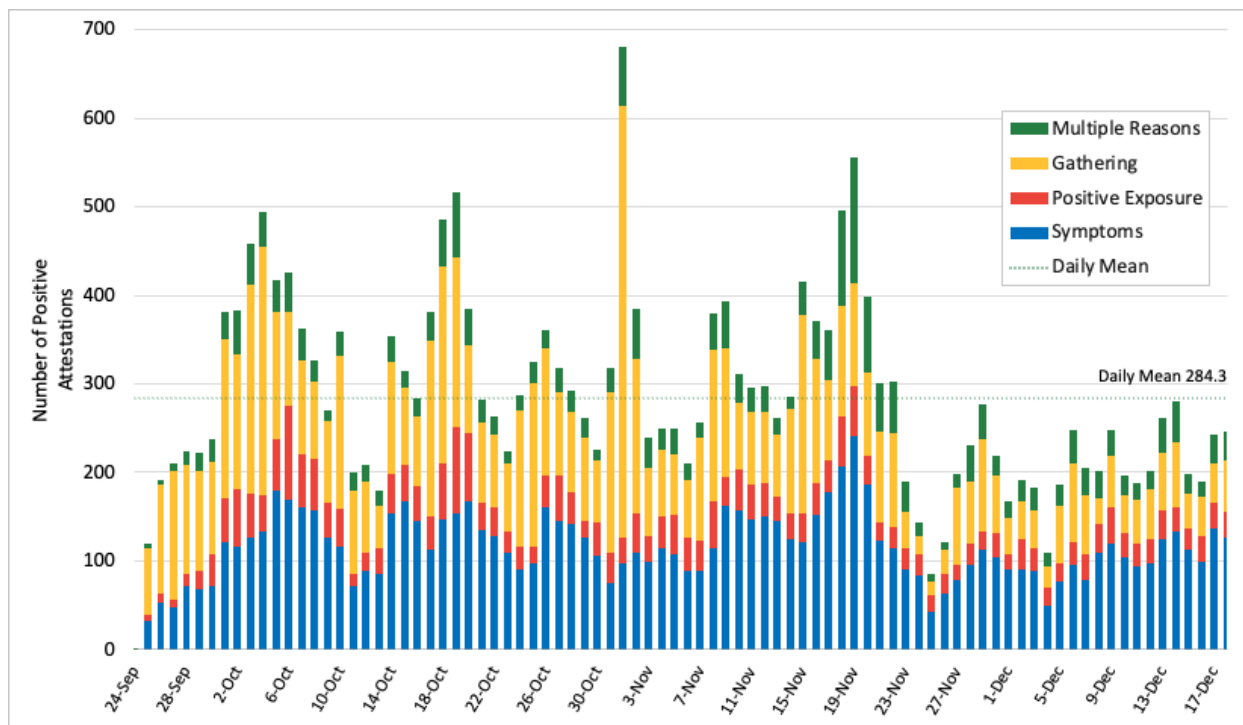
380 ***19 participants did not answer 'In the past 7 days, how often did you try to stay 6 feet away*
 381 *from people who don't live with you?'*

382

383



384



385 **Figure 1. Daily attestation survey engagement over time. (A)** Number of daily attestations
 386 completed daily during the study period. Between October 11-13, 2020 we experienced an
 387 outage of the text messaging service used to send daily attestation survey invites and this

388 *resulted in a reduced response rate. (B) Positive daily attestations stratified by reason for*
389 *positive attestation. A marked increase in positive attestations was observed the day after*
390 *Halloween, when 487 reported gathering, a 4.7-fold increase from the mean daily gathering*
391 *attestation positive of 105.*

392

393

Table 2. Characteristics of testing instances by SARS-CoV-2 result.

	Positive	Overall*	Percent Positivity (95% CI) [†]
	(n=265)	(n=29783)	
Any symptoms	161	11116	1.4% (1.2 - 1.7)
Attended large indoor gathering	57	6996	0.8% (0.6 - 1.1)
Close contact with known positive	92	3877	2.4% (1.9 - 2.9)
Baseline test	35	5700	0.6% (0.4 - 0.9)
Outbreak test	83	5257	1.6% (1.3 - 2)
Holiday test	3	1244	0.2% (0 - 0.7)
Walk-in (no invite)	18	1788	1.0% (0.6 - 1.6)
Risk tier			
Tier 1	220	19239	1.1% (1 - 1.3)
Tier 2	12	4291	0.3% (0.1 - 0.5)
Tier 3	33	6253	0.5% (0.4 - 0.7)
Affiliation[‡]			
Student	240	23802	1.0% (0.9 - 1.1)
Staff	19	4417	0.4% (0.3 - 0.7)
Faculty	4	1467	0.3% (0.1 - 0.7)
Age group			
13-17	2	153	1.3% (0.2 - 4.6)
18-49	254	27783	0.9% (0.8 - 1)
50-64	8	1548	0.5% (0.2 - 1)
65+	1	299	0.3% (0 - 1.8)
Sex assigned at birth			
Female	180	19234	0.9% (0.8 - 1.1)
Male	84	10474	0.8% (0.6 - 1)
House members			
Lives alone	16	2708	0.6% (0.3 - 1)
2 people	63	8051	0.8% (0.6 - 1)
3-5 people	34	7468	0.5% (0.3 - 0.6)
6+ people	152	11556	1.3% (1.1 - 1.5)
UW Greek Member	176	12045	1.5% (1.3 - 1.7)
Race			
American Indian or Alaska Native	0	144	0.0% (0 - 2.5)
Asian	32	4672	0.7% (0.5 - 1)
Black or African American	2	460	0.4% (0.1 - 1.6)
Native Hawaiian or other Pacific Islander	0	59	0.0% (0 - 6.1)
White	191	20464	0.9% (0.8 - 1.1)
Multiple Races	26	2808	0.9% (0.6 - 1.4)

Other	10	707	1.4% (0.7 - 2.6)
Latinx/Hispanic	35	2000	1.8% (1.2 - 2.4)
Housing type			
Apartment	32	7403	0.4% (0.3 - 0.6)
Dormitory/Residence Hall	43	3507	1.2% (0.9 - 1.6)
House/condo/townhouse	62	10433	0.6% (0.5 - 0.8)
Permanent supportive/ transitional housing	0	6	0.0% (0 - 45.9)
Homeless Shelter	0	5	0.0% (0 - 52.2)
UW Greek Chapter House	104	6145	1.7% (1.4 - 2)
UW Greek Live Out	24	2168	1.1% (0.7 - 1.6)
Other	0	116	0.0% (0 - 3.1)
Overall	265	29783	0.9% (0.8 - 1)

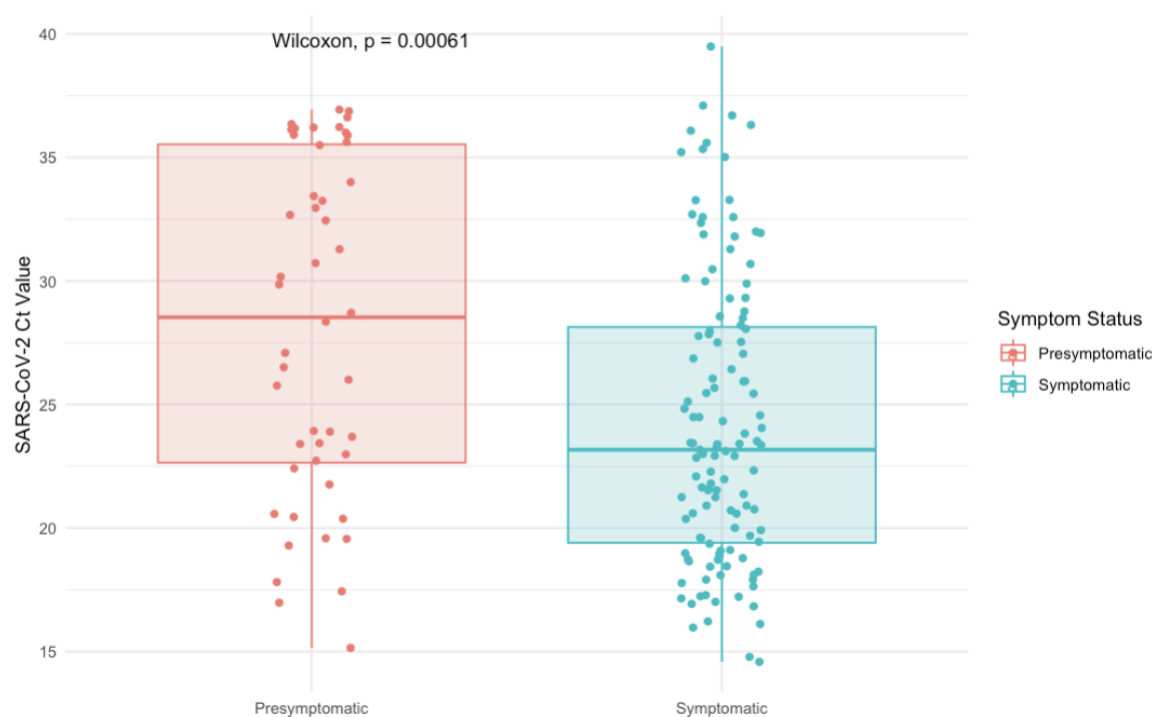
395 **Overall* includes 60 samples that were never tested*

396 *†Confidence intervals generated using Clopper-Pearson exact methods*

397 *‡86 'Other' and 15 'Volunteer' affiliation*

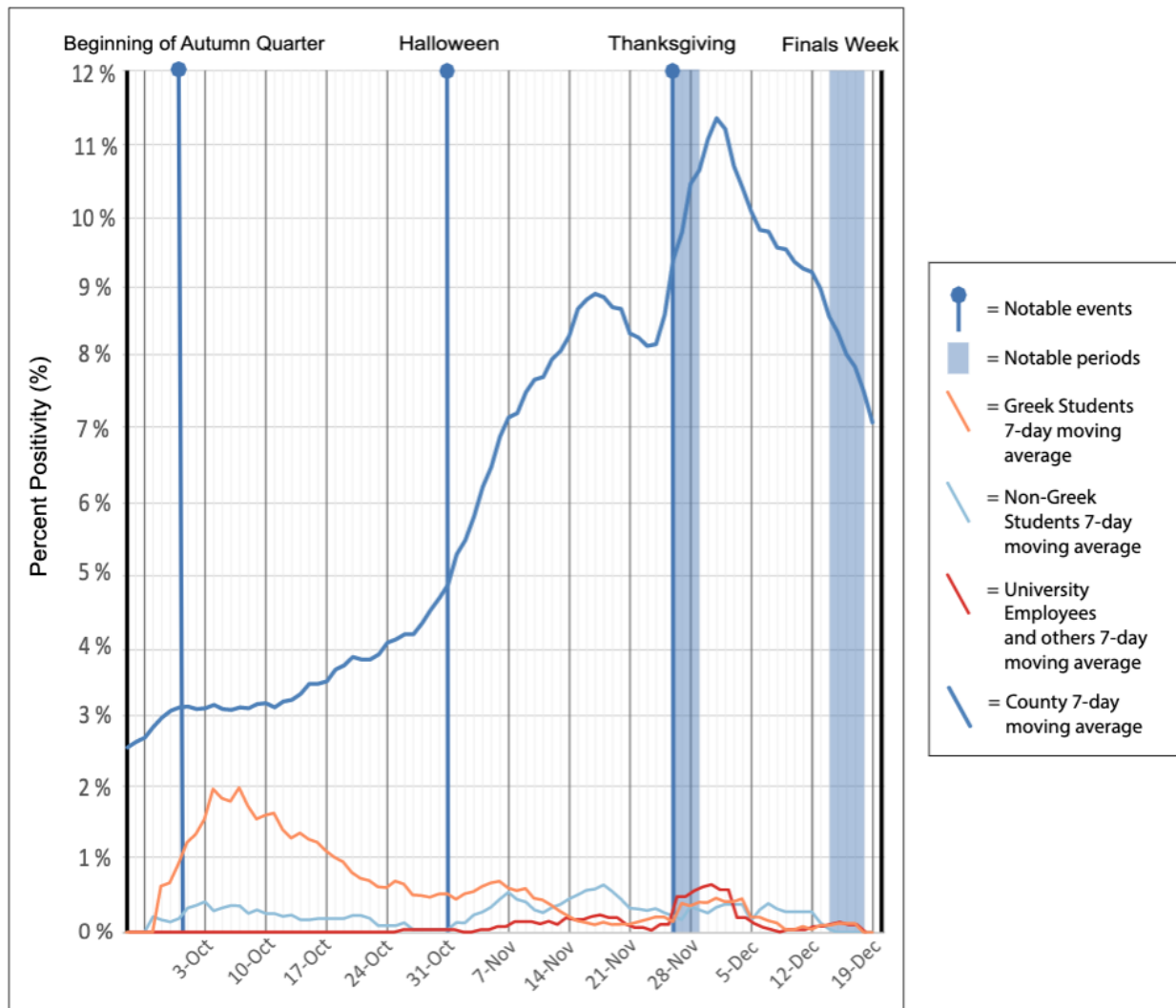
398

399



400

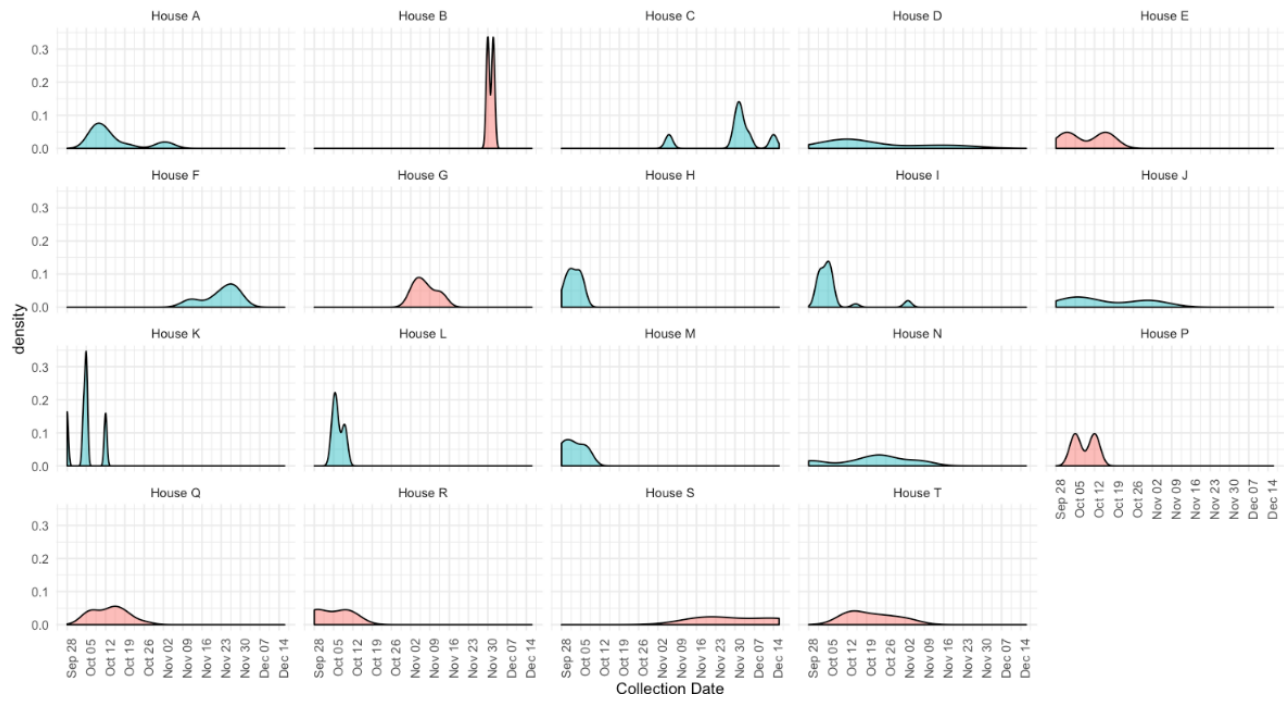
401 **Figure 2. Comparison of Viral Load in Symptomatic (n=124) vs. Presymptomatic (n=48)**
402 **Positive and Inconclusive Samples.** *Cycle threshold (Ct) for samples (each represented by*
403 *one dot) tested using our protocol with nucleic acid extraction (before November 18) are shown*
404 *here. Complete data is shown in Supplemental Figure 6. Box plots show the median values and*
405 *25th and 75th percentiles, with vertical lines demonstrating the range of values.*



406

407

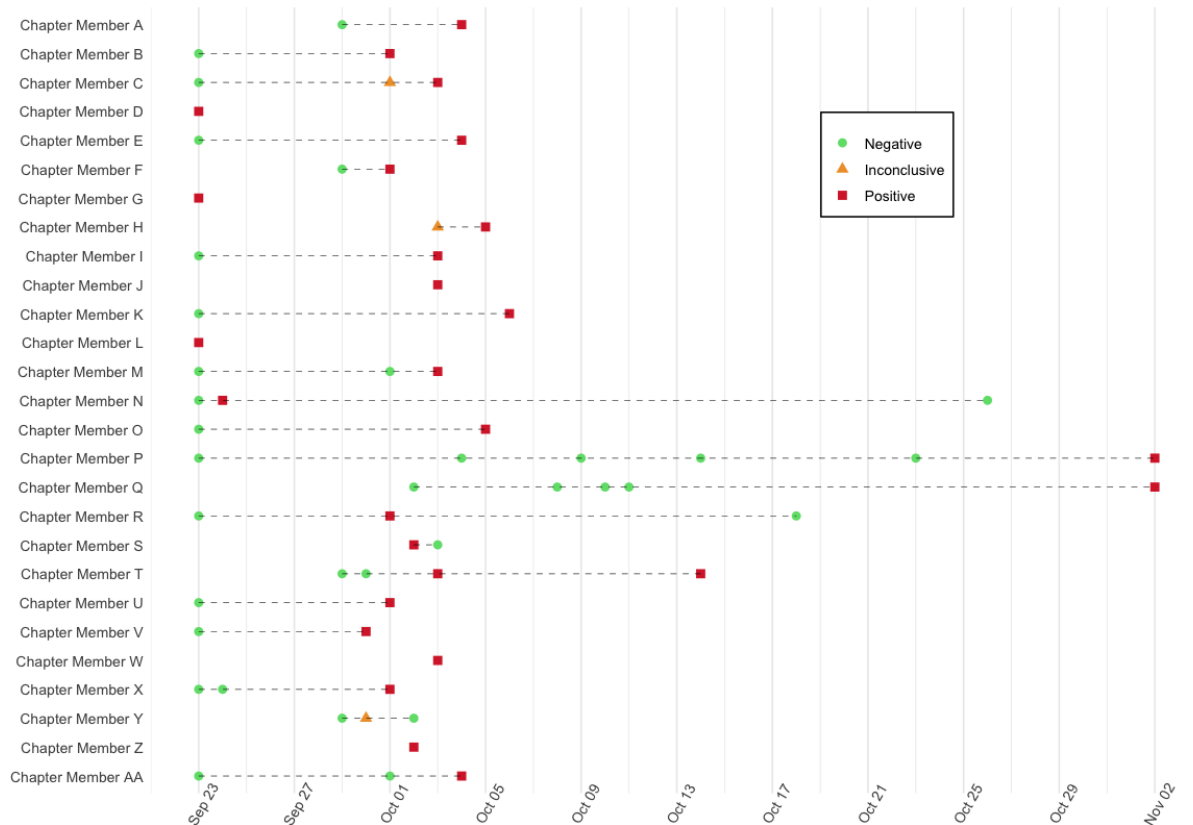
Figure 3B.



408

409

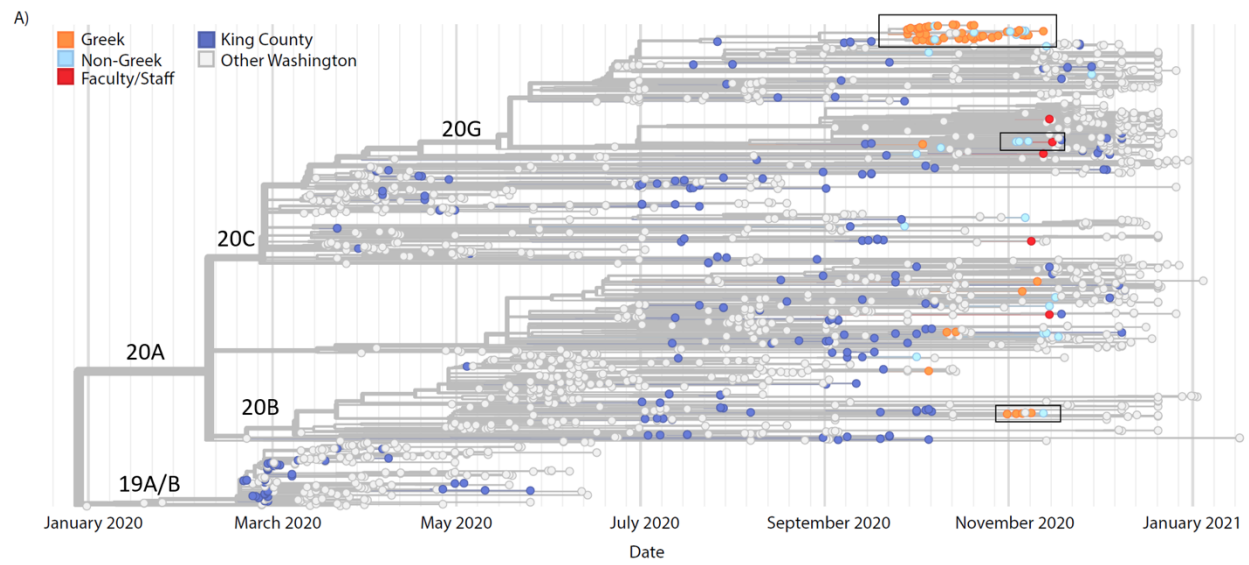
Figure 3C.



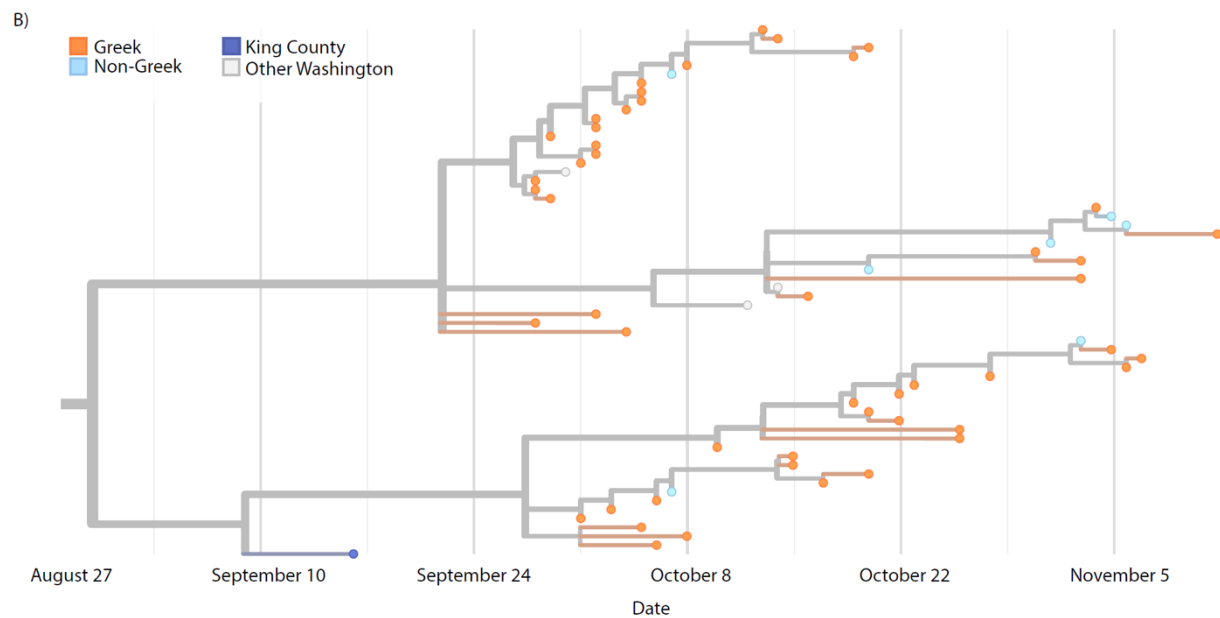
410

411 **Figure 3. Dynamics of a Greek community outbreak.** (A) Percent positivity over time of
 412 university groups and the surrounding county. The employee category includes university staff
 413 and faculty, and the Greek-affiliated students category includes all Greek-affiliated students
 414 including those living in Greek houses, Greek off-campus housing, and Greek-affiliated dorm
 415 residents. (B) Greek Chapter-level SARS-CoV-2 outbreak dynamics. Counts of cases identified
 416 by chapter during Autumn quarter. Sororities are shown in blue and the fraternities in red.
 417 Chapters with no infections detected ($n=20$) or ≤ 2 infections detected ($n=5$) are not shown. (C)
 418 Example of chapter-level individual SARS-CoV-2 outbreak dynamics within one Greek chapter
 419 (ending on November 2nd). Lines represent individual study participants tested multiple times,
 420 and dots signify a single test.

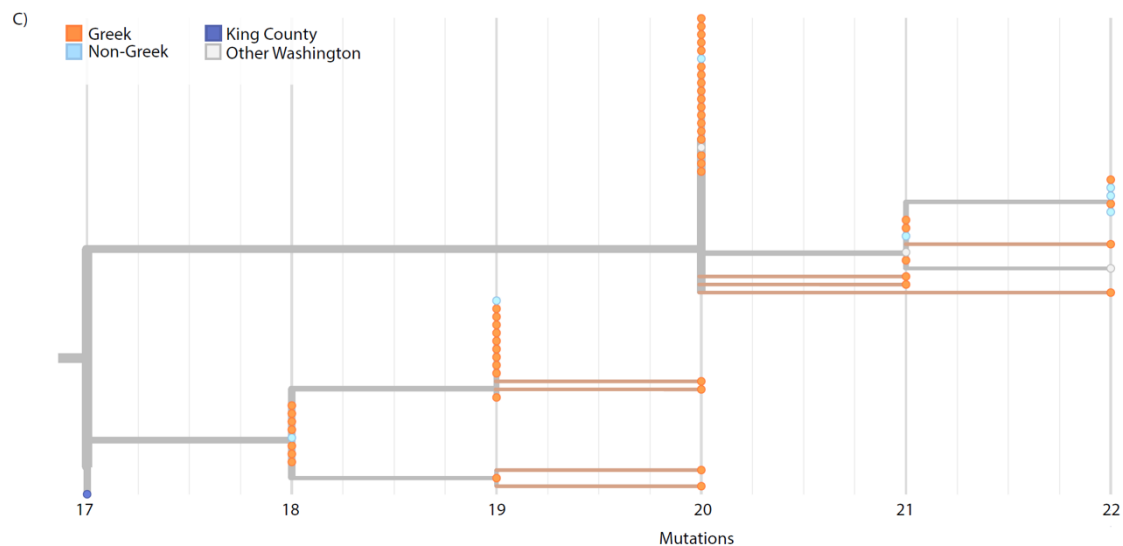
421



422



423



424

425

426

427

428

429

430

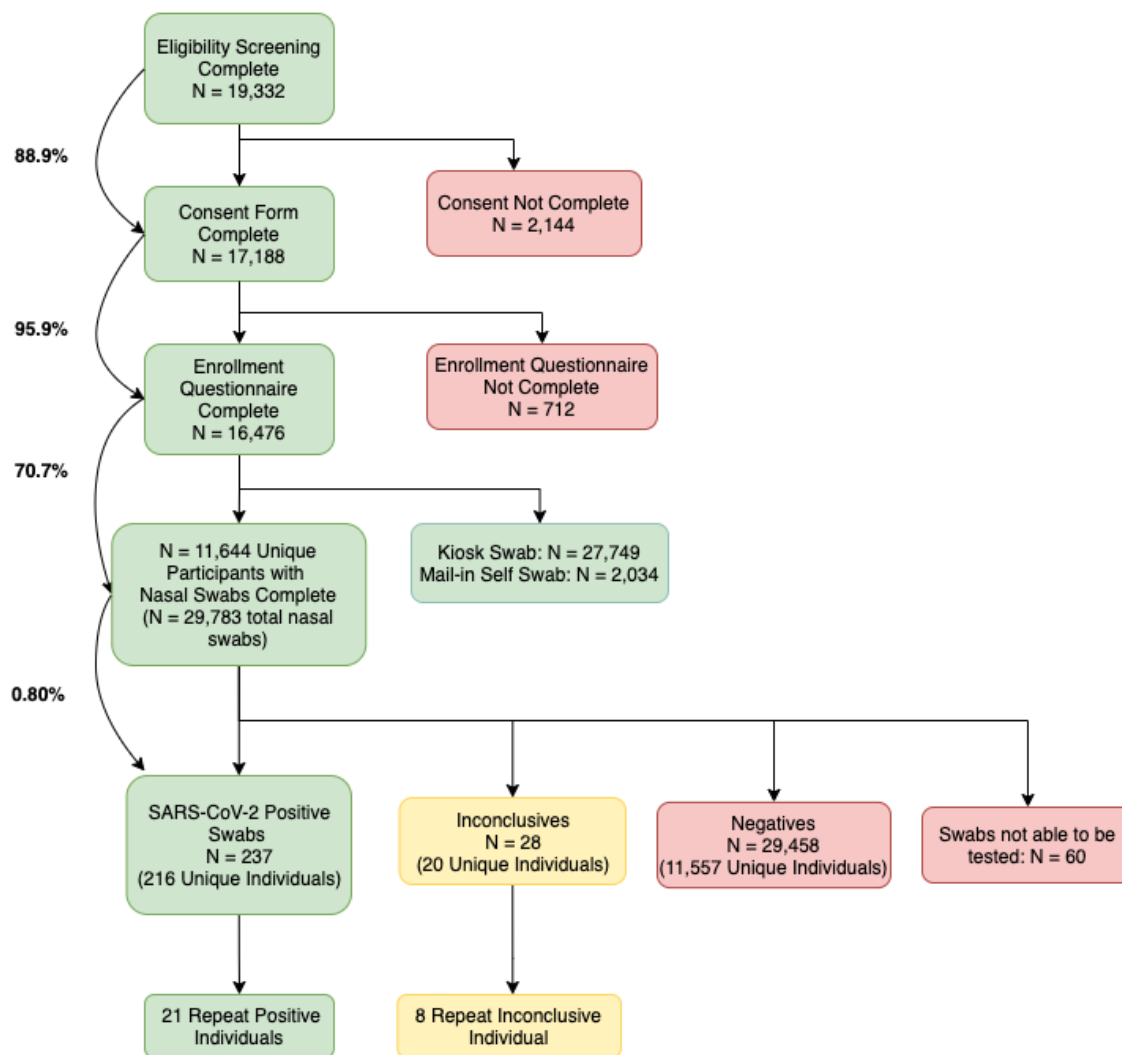
431

432

Figure 4: Molecular Epidemiology of a university outbreak. A) *Phylogenetic tree of SARS-CoV-2 samples from Washington, including 88 samples from this study. Included here are all SARS-CoV-2 genomes from Washington collected on or after September 25, 2020, a random subsample of 1000 Washington samples collected prior to September 25, and the Wuhan/Hu-1 reference genome. Samples are positioned on the X axis by date of collection.* B) *Detail of a cluster of university genomes organized horizontally by collection date,* and C) *by divergence, or the number of genetic changes relative to SARS-CoV-2 reference genome.*

433

SUPPLEMENTARY MATERIAL



434

435

Supplemental Figure 1. Participant study flow. Flow of study procedures from the

436

participant's view, beginning with the eligibility screening and ending with the test results. 11.1%

437

of people who started the eligibility screening process did not complete the consent form, but

438

nearly all (95.9%) of those who completed the consent form continued to complete the

439

enrollment questionnaire.

440

441 **Supplemental Table 1. Tier Criteria for study participants.**

Tier Level	Criteria
Tier 1	Students living in on-campus housing, including dormitories/residence halls
	Students affiliated with the Greek community or living in Greek housing
	Students living in a household of 4 or more members
Tier 2	Students on-campus two or more days per week that live in a household of 3 members or less
	Faculty, Staff, and Volunteers of the main Campus that are on-campus two or more days per week
Tier 3	All other enrollees

442

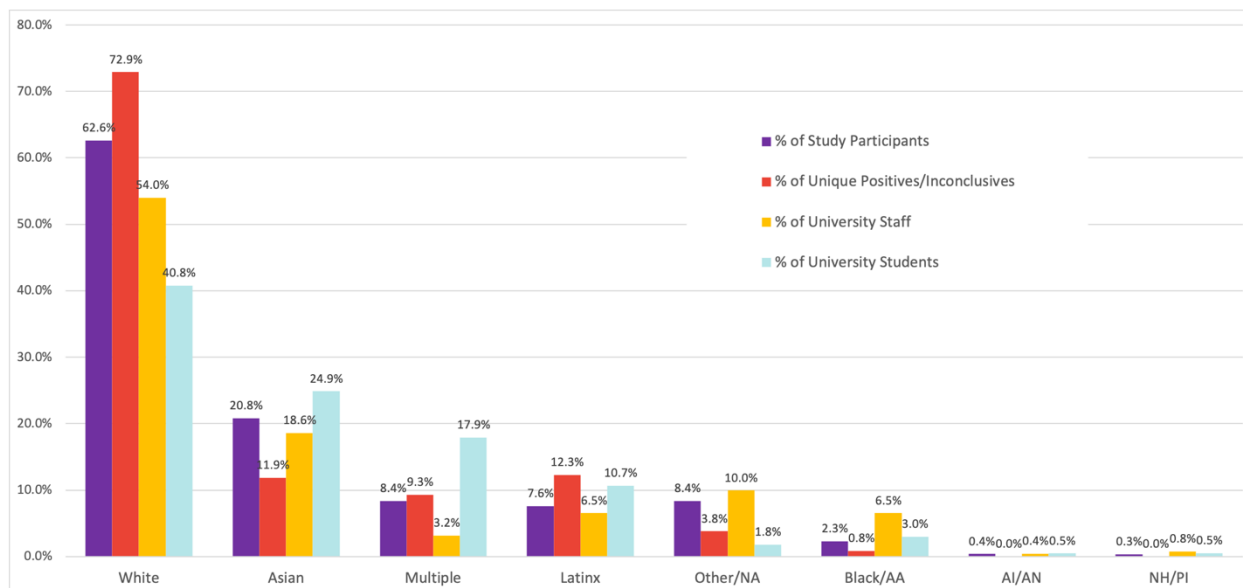
443

444 **Supplemental Table 2. Enrollment and Testing Status by Tier**

	Tier 1 (n=6638)	Tier 2 (n=3313)	Tier 3 (n=6525)	Overall (n=16476)
Testing Status				
Never Tested	1326 (20.0%)	758 (22.9%)	2759 (42.3%)	4843 (29.4%)
Tested at least once	5312 (80.0%)	2555 (77.1%)	3766 (57.7%)	11633 (70.6%)
Number of swabs per person				
Mean (SD)	2.89 (3.14)	1.29 (1.31)	0.954 (1.27)	1.80 (2.40)
Median [Min, Max]	2.00 [0.00, 21.0]	1.00 [0.00, 11.0]	1.00 [0.00, 11.0]	1.00 [0.00, 21.0]

445

446



447

448

Supplemental Figure 2. Enrollment and testing representation by race and ethnicity

449

The blue bars in Supplemental Figure 2 represent the percentage of study enrollees by self-

450

identified race and ethnicity (Hispanic/Latinx) category. The purple bars represent the

451

percentage of the study's enrollees, red bars represent the percentage of the study's unique

452

individuals who tested positive or inconclusive, while the yellow and turquoise bars represent

453

the percentage of UW overall student body and staff, respectively. Data on race and ethnicity

454

categories of faculty were not available. Multiple = selected multiple race categories. AA =

455

African American. AI/AN = American Indian or Alaska Native. NH/PI = Native Hawaiian or

456

Pacific Islander.

457

458 **Supplemental Table 3. Race/Ethnicity in Study Population**

	Greek Student (N=2672)	Non-Greek Student (N=8356)	Staff/Faculty (N=5448)	Overall* (N=16476)
Race				
American Indian or Alaska Native	10 (0.4%)	35 (0.4%)	23 (0.4%)	68 (0.4%)
Asian	324 (12.1%)	2413 (28.9%)	695 (12.8%)	3432 (20.8%)
Black or African American	33 (1.2%)	187 (2.2%)	163 (3.0%)	383 (2.3%)
Multiple Races	286 (10.7%)	813 (9.7%)	281 (5.2%)	1380 (8.4%)
Native Hawaiian or other Pacific Islander	8 (0.3%)	22 (0.3%)	27 (0.5%)	57 (0.3%)
Other	41 (1.5%)	292 (3.5%)	150 (2.8%)	483 (2.9%)
White	1944 (72.8%)	4409 (52.8%)	3961 (72.7%)	10314 (62.6%)
Latinx/Hispanic	167 (6.2%)	729 (8.7%)	356 (6.5%)	1252 (7.6%)

459 **359 missing race and 145 missing Hispanic/Latinx ethnicity*

460

Supplemental Table 4. Test Positivity by University Affiliation and Race/Ethnicity

	Race Category	SARS-CoV-2 Test Result			Total
		Positive	Inconclusive	Negative	
Student	American Indian or Alaska Native	0 (0%)	0 (0%)	115 (100%)	115
	Asian	25 (0.6%)	1 (0.0%)	4009 (99.2%)	4040
	Black or African American	2 (0.7%)	0 (0%)	274 (98.6%)	278
	Multiple Races	21 (0.8%)	3 (0.1%)	2451 (98.8%)	2481
	Native Hawaiian or other Pacific Islander	0 (0%)	0 (0%)	37 (100%)	37
	Other	4 (0.8%)	1 (0.2%)	516 (98.5%)	524
	White	159 (1.0%)	20 (0.1%)	15833 (98.8%)	16031
Staff	American Indian or Alaska Native	0 (0%)	0 (0%)	23 (100%)	23
	Asian	5 (1.1%)	0 (0%)	434 (98.6%)	440
	Black or African American	0 (0%)	0 (0%)	139 (98.6%)	141
	Multiple Races	1 (0.4%)	0 (0%)	277 (99.6%)	278
	Native Hawaiian or other Pacific Islander	0 (0%)	0 (0%)	22 (100%)	22
	Other	4 (2.8%)	0 (0%)	139 (97.2%)	143
	White	8 (0.2%)	1 (0.0%)	3237 (99.3%)	3260
Faculty	American Indian or Alaska Native	0 (0%)	0 (0%)	6 (100%)	6
	Asian	0 (0%)	1 (0.6%)	180 (99.4%)	181
	Black or African American	0 (0%)	0 (0%)	40 (97.6%)	41
	Multiple Races	1 (2.4%)	0 (0%)	41 (97.6%)	42
	Other	1 (2.6%)	0 (0%)	37 (97.4%)	38
	White	1 (0.1%)	0 (0%)	1099 (99.5%)	1105
Other	Asian	0 (0%)	0 (0%)	11 (100%)	11

	Multiple Races	0 (0%)	0 (0%)	7 (100%)	7
	Other	0 (0%)	0 (0%)	2 (100%)	2
	White	2 (2.9%)	0 (0%)	66 (97.1%)	68

461 * 469 participants who had race missing were excluded from the table. 'Overall' includes 60

462 samples that were never tested

463

Supplemental Table 5. Behavior and Travel Questions at Time of Enrollment

	Student (N=11022)	Staff (N=3928)	Faculty (N=1394)	Other (N=132)	Overall (N=16476)
In the past 7 days, how often did you wash your hands with soap or use hand sanitizer?*					
Frequently	10295 (93.4%)	3715 (94.6%)	1309 (93.9%)	120 (90.9%)	15439 (93.7%)
Never	4 (0.0%)	1 (0.0%)	2 (0.1%)	0 (0%)	7 (0.0%)
Sometimes	721 (6.5%)	212 (5.4%)	83 (6.0%)	12 (9.1%)	1028 (6.2%)
In the past 7 days, how often did you clean or disinfect items or surfaces in your living or workspace?†					
Frequently	5668 (51.4%)	2137 (54.4%)	654 (46.9%)	67 (50.8%)	8526 (51.7%)
Never	461 (4.2%)	109 (2.8%)	72 (5.2%)	6 (4.5%)	648 (3.9%)
Sometimes	4873 (44.2%)	1681 (42.8%)	665 (47.7%)	59 (44.7%)	7278 (44.2%)
In the past 7 days, how often did you cough or sneeze only into your elbow or a tissue when around others?‡					
Always	8708 (79.0%)	3120 (79.4%)	1047 (75.1%)	101 (76.5%)	12976 (78.8%)
Never	700 (6.4%)	189 (4.8%)	79 (5.7%)	8 (6.1%)	976 (5.9%)
Sometimes	1007 (9.1%)	364 (9.3%)	131 (9.4%)	14 (10.6%)	1516 (9.2%)
In the past 7 days, how often did you wear a face mask in public to protect others from getting sick?§					
Always	10714 (97.2%)	3830 (97.5%)	1341 (96.2%)	129 (97.7%)	16014 (97.2%)
Never	2 (0.0%)	0 (0%)	0 (0%)	0 (0%)	2 (0.0%)
Sometimes	297 (2.7%)	95 (2.4%)	50 (3.6%)	3 (2.3%)	445 (2.7%)
In the past 7 days, how often did you try to stay 6 feet away from people who don't live with you?¶					

Always	7549 (68.5%)	3190 (81.2%)	1185 (85.0%)	98 (74.2%)	12022 (73.0%)
Never	42 (0.4%)	5 (0.1%)	1 (0.1%)	0 (0%)	48 (0.3%)
Sometimes	3416 (31.0%)	729 (18.6%)	208 (14.9%)	34 (25.8%)	4387 (26.6%)
In the past 14 days have you traveled to a US state other than Washington State?					
No	9369 (85.0%)	3631 (92.4%)	1263 (90.6%)	119 (90.2%)	14382 (87.3%)
Yes	1653 (15.0%)	297 (7.6%)	131 (9.4%)	13 (9.8%)	2094 (12.7%)
In the past 14 days, have you visited a country other than the US?					
No	10883 (98.7%)	3910 (99.5%)	1380 (99.0%)	128 (97.0%)	16301 (98.9%)
Yes	139 (1.3%)	18 (0.5%)	14 (1.0%)	4 (3.0%)	175 (1.1%)

464 *2 were missing a response

465 †24 were missing a response

466 ‡1008 were missing a response

467 §15 were missing a response

468 ¶19 were missing a response

469

470

Supplemental Table 6. Generalized Estimating Equation logistic regression model with

471

robust variance

Risk factor	Crude OR [95% CI]	P	Adjusted OR [95% CI]	P
Race				
White	(Ref)	(Ref)	(Ref)	(Ref)
Asian	0.73 [0.48, 1.11]	0.14	0.93 [0.60, 1.44]	0.75
Black or African American	0.47 [0.12, 1.88]	0.28	0.66 [0.16, 2.71]	0.57
Other	1.18 [0.58, 2.40]	0.65	1.07 [0.52, 2.20]	0.85
Multiple Races	0.99 [0.62, 1.59]	0.97	0.97 [0.60, 1.56]	0.90
Hispanic ethnicity				
No	(Ref)	(Ref)	(Ref)	(Ref)
Yes	2.12 [1.39, 3.23]	<0.001*	2.02 [1.28, 3.18]	0.002*
Affiliation				
Non-Greek Student	(Ref)	(Ref)	(Ref)	(Ref)
Greek Student	2.71 [1.97, 3.73]	<0.001*	2.71 [1.84, 4.00]	<0.001*
Faculty	0.50 [0.18, 1.38]	0.18	0.56 [0.20, 1.55]	0.26
Staff	0.79 [0.47, 1.34]	0.38	0.80 [0.46, 1.38]	0.42
Other	3.84 [0.92, 15.97]	0.06	4.19 [1.01, 17.43]	0.05*
Number of House Members				
Lives alone	(Ref)	(Ref)	(Ref)	(Ref)
2	1.33 [0.74, 2.38]	0.34	1.21 [0.66, 2.23]	0.54
2-5	0.77 [0.41, 1.43]	0.41	0.73 [0.38, 1.40]	0.34
6+	2.24 [1.29, 3.89]	0.004*	1.15 [0.62, 2.13]	0.65
Attestation positive †				
No	(Ref)	(Ref)	(Ref)	(Ref)
Yes	1.61 [1.24, 2.08]	<0.001*	1.86 [1.43, 2.41]	<0.001*
Physical distancing behavior ‡				
Always	(Ref)	(Ref)	(Ref)	(Ref)
Sometimes	0.95 [0.72, 1.26]	0.73	0.89 [0.67, 1.18]	0.42
Never	2.06 [0.53, 8.03]	0.30	1.44 [0.29, 7.02]	0.66
On-campus frequency				
Do not come to campus	(Ref)	(Ref)	(Ref)	(Ref)
One day a week or less	0.84 [0.65, 1.28]	0.37	0.84 [0.57, 1.23]	0.37
Two days a week or more	0.91 [0.65, 1.28]	0.60	0.94 [0.67, 1.33]	0.74
Mask wearing behavior †				
Always	(Ref)	(Ref)	(Ref)	(Ref)
Sometimes or Never	1.10 [0.53, 2.28]	0.81	0.73 [0.38, 1.40]	0.34
Hand washing behavior †				
Frequently	(Ref)	(Ref)	(Ref)	(Ref)

Sometimes or Never	0.73 [0.39, 1.37]	0.32	1.10 [0.52, 2.36]	0.80
--------------------	-------------------	------	-------------------	------

472 **Statistically significant p-value at the 0.05 alpha level*

473 *†Attestation positive includes those that have not tested positive with a nose or throat swab for*
474 *SARS-CoV-2 in the past week, along with any of the following: i) answer “yes” to having any*
475 *new symptoms in the last 24 hours, ii) answer “yes” to having attended an indoor social or*
476 *community gathering with 10 or more people in the past 24 hours, where they or others were*
477 *not wearing masks and not social distancing 6 feet apart or more, iii) answer “yes” to having*
478 *learned that they were exposed to a person (in the last 10 days) who tested positive for SARS-*
479 *CoV-2 In the last 24 hours.*

480 *‡Asked at enrollment*

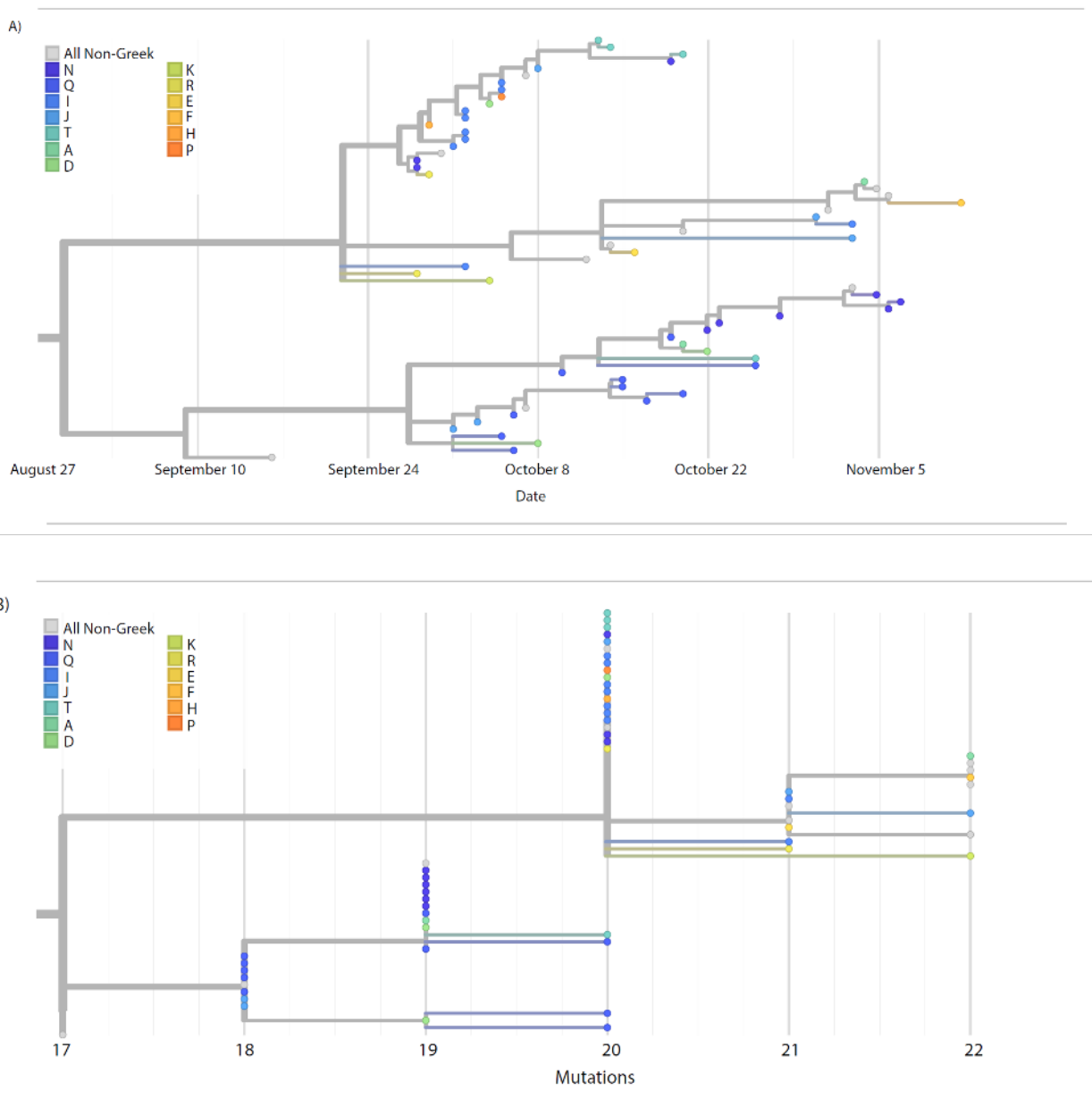
481

482

Supplemental Table 7. Reported symptoms by SARS-CoV-2 test result

		Positive (n=265)	Negative (n=29458)	Overall (n=29783)	Percent Positive
Reported symptoms within 7 days prior to or at time of testing (n=11116)	Muscle or body aches	54 (20.4%)	2251 (7.6%)	2313 (7.8%)	2.3%
	Difficulty breathing	18 (6.8%)	1168 (4.0%)	1191 (4.0%)	1.5%
	Chills	36 (13.6%)	1327 (4.5%)	1365 (4.6%)	2.6%
	Cough	74 (27.9%)	3626 (12.3%)	3711 (12.5%)	2.0%
	Fever	52 (19.6%)	1461 (5.0%)	1518 (5.1%)	3.4%
	Loss of smell or taste	19 (7.2%)	362 (1.2%)	382 (1.3%)	5.0%
	Other	134 (50.6%)	8982 (30.5%)	9147 (30.7%)	1.5%
	None	49 (18.5%)	13702 (46.5%)	13771 (46.2%)	0.40%
	Missing	55 (20.8%)	4835 (16.4%)	4896 (16.4%)	1.1%
Reported symptoms within 7 days after testing (n=2897)	Muscle or body aches	42 (15.8%)	611 (2.1%)	657 (2.2%)	6.4%
	Difficulty breathing	19 (7.2%)	344 (1.2%)	364 (1.2%)	5.2%
	Chills	20 (7.5%)	375 (1.3%)	397 (1.3%)	5.0%
	Cough	26 (9.8%)	794 (2.7%)	825 (2.8%)	3.2%
	Fever	35 (13.2%)	414 (1.4%)	453 (1.5%)	7.7%
	Loss of smell or taste	39 (14.7%)	100 (0.3%)	141 (0.5%)	27.7%
	Other	51 (19.2%)	1406 (4.8%)	1462 (4.9%)	3.5%
	None	83 (31.3%)	18943 (64.3%)	19065 (64.0%)	0.44%
	Missing	99 (37.4%)	7715 (26.2%)	7821 (26.3%)	1.3%

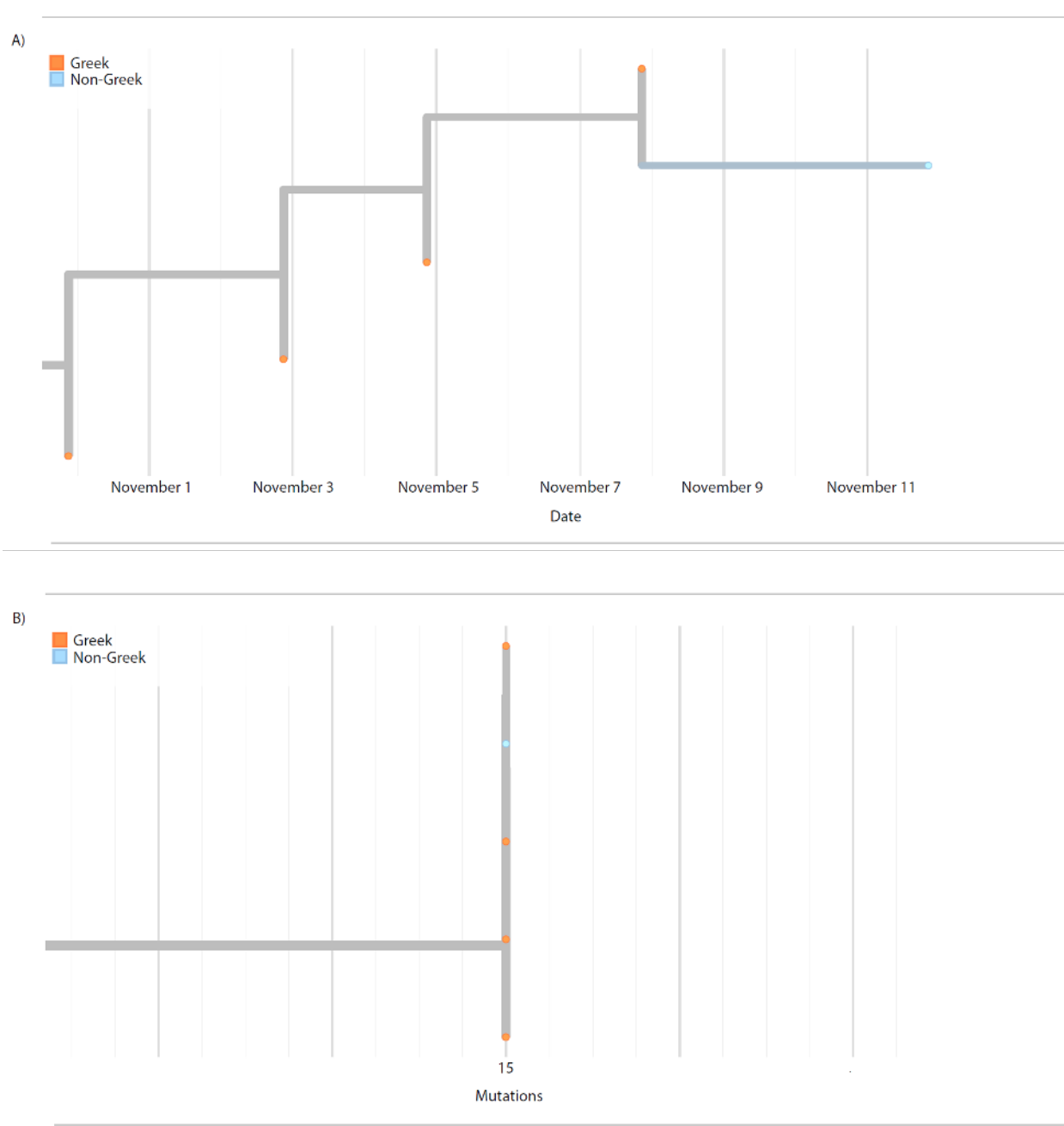
483



484

485

486 **Supplemental Figure 3:** A) Detailed view of large cluster of SARS-CoV-2 samples collected by
487 the study. Samples from Greek students are colored according to the house to which the
488 students belong. Samples positioned along the x axis according to collection date. B) Identical
489 to (A) with samples positioned along the x axis according to the number of mutations
490 distinguishing them from the Wuhan/Hu-1 reference sequence.



491

492

493

494

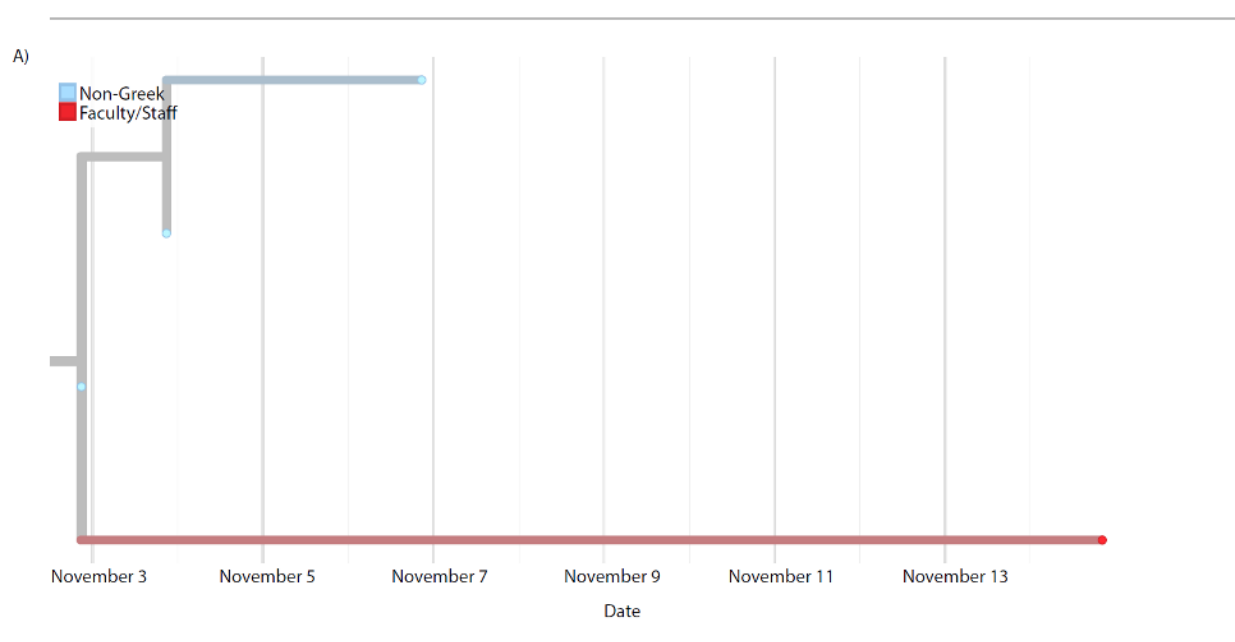
495

496

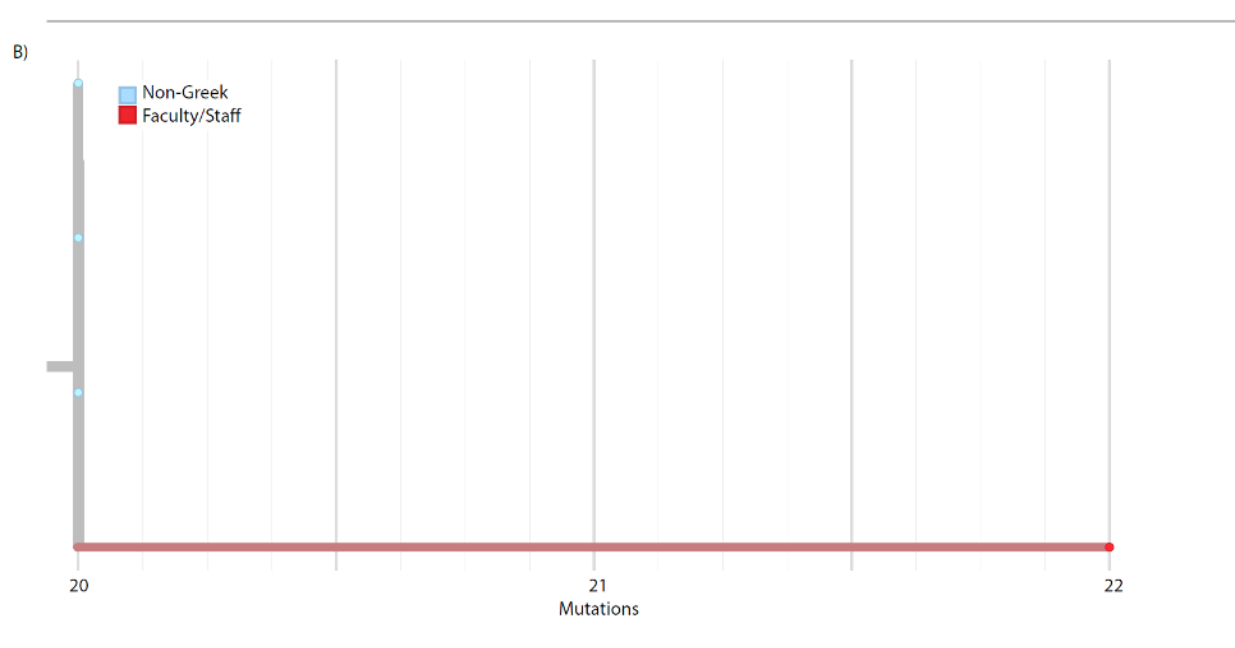
497

498

Supplemental Figure 4: A) Detail of transmission cluster (boxed in Figure 4A) containing SARS-CoV-2 samples from 4 Greek students and one non-Greek student. Samples positioned along the x axis according to collection date. B) Identical to (A) with samples positioned along the x axis according to the number of mutations distinguishing them from the Wuhan/Hu-1 reference sequence.



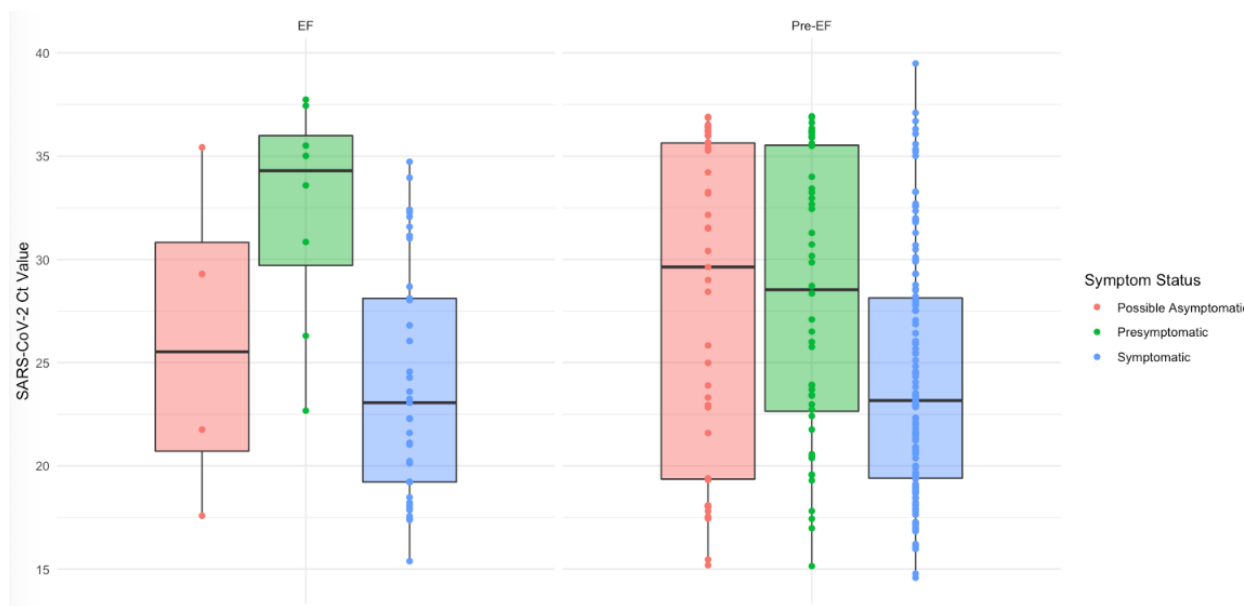
499



500

501 **Supplemental Figure 5:** A) Detail of transmission cluster (boxed in Figure 4A) containing
502 SARS-CoV-2 samples from 3 non-Greek students and one faculty/staff member. Samples are
503 positioned along the x axis according to collection date. B) Identical to (A) with samples
504 positioned along the x axis according to the number of mutations distinguishing them from the
505 Wuhan/Hu-1 reference sequence.

506



507

508 **Supplemental Figure 6. Ct values by symptom status: positive and inconclusive samples.**

509 *Mid-study, we implemented an extraction-free testing method that yielded similar results, but Ct*

510 *values from the two methods are not directly comparable. Cycle threshold (Ct) for samples*

511 *(each represented by one dot) tested using our prior nucleic acid extraction testing method*

512 *(‘Pre-EF’) and newer extraction-free laboratory method (‘EF’, implemented November 18, 2020)*

513 *are shown here. Box plots show the median values and 25th and 75th percentiles, with vertical*

514 *lines demonstrating the range of values.*

515

516 **Appendices: Study Materials**

517 1. [Husky Coronavirus Testing Consent Form](#)

518 2. [Husky Coronavirus Testing Parental Consent Form](#)

519 3. [Eligibility Screening Questionnaire](#)

520 4. [Enrollment Questionnaire](#)

521 5. [Daily Attestation Survey](#)

522 6. [Study Protocol](#)

523

524 **Supplemental Text**

525 **Supplemental Methods**

526 **Recruitment**

527 Recruitment was conducted through university emails and newsletters, social media, flyers,
528 announcements, physical signs, and links to the study website on a university webpage. For
529 participants between 13-17 years of age, parent or guardian consent was required.

530 **Testing Procedures**

531 *In-person testing*

532 Walk-up testing for individuals without a scheduled appointment was accepted, regardless of
533 attestation or invitation status. Individuals enrolled onsite, either through smartphones or tablet.
534 To minimize the possibility of contact with high-risk people during the testing process,
535 individuals were tested in two physically separate groups. The first was for participants reporting
536 symptoms or a high-risk exposure, and the second was for lower-risk study participants without
537 these risk factors.

538 Swabs were collected by rotating the swab 360 degrees five times in each nostril and placing
539 the swab in a dry tube with a barcode. The research staff scanned the barcode into the
540 participant's record. If participants tested positive/inconclusive and did not report symptoms
541 within seven days prior to or following their test, they were sent a short follow-up survey about
542 symptoms experienced after the positive test.

543 *Mail-in swab kits.* Mail-in swab kits were scheduled, delivered and picked up seven days per
544 week [1][2]. For individuals receiving mail-in swab kits, the kits were delivered to the
545 participant's residence through a local courier service and picked up the same or next day.

546 Swab kits contained a sealed anterior nasal swab, an instructional pamphlet, a dry tube with a
547 barcode sticker, a biohazard bag, and a pre-addressed return polmailer bag [1-3]. Samples
548 were returned in an International Air Transport Association-compliant Category B mailer within
549 48 hours of collection.

550 **Laboratory Methods**

551 Swabs were transported dry, rehydrated and eluted in 1 mL of PBS or Tris-EDTA. 200 µL of
552 eluate was extracted on the Magna Pure 96 using a DNA and Viral NA Small Volume Kit
553 (Roche, 06543588001) with the universal small volume protocol, and eluted into 50 µL
554 proprietary elution buffer. 200 µL of eluted anterior nares specimens collected after October 18,
555 2020 were extracted on the KingFisher Flex using the MagMAX Viral Pathogen II Nucleic Acid
556 Isolation Kit with MagMAX™ Viral/Pathogen Ultra Enzyme Mix (Thermo Fisher A48383 and
557 A42366) and eluted in 50 µL. After November 18, 2020 samples were prepared for PCR using
558 an extraction-free method in which 50 µL of eluate in Tris-EDTA was heat treated for 30 min at
559 95°C used directly in RT-qPCR [3].

560

561 **Supplemental Results: COVID-19 Preventative Behavior**

562 In the enrollment survey, participants reported frequency of COVID-19 prevention behaviors
563 during the prior seven days (Supplemental Table 5). More than 93.6% and 97.4% reported
564 frequent handwashing and mask wearing, respectively, while 52.0% reported frequently
565 cleaning or disinfecting items and surfaces in their living or workspace, and 73.4% reported
566 always social distancing (“In the past 7 days, how often did you try to stay 6 feet away from
567 people who don’t live with you?”). Faculty/staff reported increased social distancing (81.4% and
568 85.2%) compared to students (69.3%). At enrollment, 245 (1.4%) of participants reported travel
569 outside of the country in the prior 14 days, while 2421 (13.8%) reported traveling outside of the
570 state during the same time frame.

571

572

573

574 **Supplemental Text References**

575 [1] McCulloch DJ, Kim AE, Wilcox NC, et al. Comparison of Unsupervised Home Self-collected
576 Midnasal Swabs With Clinician-Collected Nasopharyngeal Swabs for Detection of
577 SARS-CoV-2 Infection. *JAMA Netw Open* [Internet]. 2020 Jul 22 [cited 2021 Jan
578 28];3(7):e2016382. Available from:
579 <https://jamanetwork.com/journals/jamanetworkopen/fullarticle/2768535>

580 [2] Chu HY, Boeckh M, Englund JA, et al. The Seattle Flu Study: a multiarm community-based
581 prospective study protocol for assessing influenza prevalence, transmission and
582 genomic epidemiology. *BMJ Open* [Internet]. 2020 [cited 2021 Jan 28];10(10):e037295.
583 Available from: <https://bmjopen.bmj.com/lookup/doi/10.1136/bmjopen-2020-037295>

584 [3] Srivatsan S, Han PD, van Raay K, et al. Preliminary support for a “dry swab, extraction free”
585 protocol for SARS-CoV-2 testing via RT-qPCR. *bioRxiv* [Preprint]. 2020 Apr 23.

586

REFERENCES

- 587 [1] Boehmer TK. Changing Age Distribution of the COVID-19 Pandemic — United States, May–
588 August 2020. MMWR Morb Mortal Wkly Rep [Internet]. 2020 [cited 2021 Jan 28];69.
589 Available from: <https://www.cdc.gov/mmwr/volumes/69/wr/mm6939e1.htm>
- 590 [2] Malmgren J, Guo B, Kaplan HG. Continued Age Shift of Confirmed Positive COVID-19
591 Incidence Over Time to Children and Young Adults: Washington State March - August
592 2020. medRxiv [Preprint]. 2020 Nov 16 [cited 2021 Jan 28];2020.11.12.20229468.
593 Available from: <https://www.medrxiv.org/content/10.1101/2020.11.12.20229468v1>
- 594 [3] Hubler S, Hartocollis A. How Colleges Became the New Covid Hot Spots. The New York
595 Times [Internet]. 2020 Sep 11 [cited 2021 Jan 28]; Available from:
596 <https://www.nytimes.com/2020/09/11/us/college-campus-outbreak-covid.html>
- 597 [4] Denny TN, Andrews L, Bonsignori M, et al. Implementation of a Pooled Surveillance Testing
598 Program for Asymptomatic SARS-CoV-2 Infections on a College Campus - Duke
599 University, Durham, North Carolina, August 2-October 11, 2020. MMWR Morb Mortal
600 Wkly Rep. 2020 Nov 20;69(46):1743–7.
- 601 [5] O'Donnell C, Brownlee K, Martin E, et al. SARS-CoV-2 Control on a Large Urban College
602 Campus Without Mass Testing. medRxiv [Preprint]. 2021 Jan 25 [cited 2021 Feb
603 1];2021.01.21.21249825. Available from:
604 <https://www.medrxiv.org/content/10.1101/2021.01.21.21249825v1>
- 605 [6] Christensen K. Tracking and Treating COVID-19 in Human Waste [Internet]. Michigan
606 Technological University. 2020 [cited 2021 Feb 11]. Available from:
607 <https://www.mtu.edu/news/stories/2020/may/tracking-and-treating-covid19-in-human-waste.html>
608
- 609 [7] Booeshaghi AS, Tan F, Renton B, et al. Markedly heterogeneous COVID-19 testing plans
610 among US colleges and universities. medRxiv [Preprint]. 2020 Aug 11 [cited 2021 Feb
611 4];2020.08.09.20171223. Available from:
612 <https://www.medrxiv.org/content/10.1101/2020.08.09.20171223v1>
- 613 [8] CDC. Communities, Schools, Workplaces, & Events [Internet]. Centers for Disease Control
614 and Prevention. 2020 [cited 2021 Feb 11]. Available from:
615 <https://web.archive.org/web/20200804093611/https://www.cdc.gov/coronavirus/2019-ncov/community/guidance-ihe-response.html>
616
- 617 [9] Discover the University of Washington [Internet]. About the UW. [cited 2021 Jan 28].
618 Available from: <https://www.washington.edu/about/>
- 619 [10] University of Washington. 2020 University of Washington Financial Report [Internet]. 2020.
620 Available from: <https://finance.uw.edu/uwar/annualreport2020.pdf>
- 621 [11] How the pandemic will affect autumn quarter learning (Message to students from the United
622 States) [Internet]. Novel coronavirus information. [cited 2021 Feb 1]. Available from:
623 <https://www.washington.edu/coronavirus/2020/08/06/autumn-quarter-learning-message-to-students-from-the-united-states/>
624

- 625 [12] Harris PA, Taylor R, Thielke R, et al. Research electronic data capture (REDCap)--a
626 metadata-driven methodology and workflow process for providing translational research
627 informatics support. *J Biomed Inform.* 2009 Apr;42(2):377–81.
- 628 [13] Harris PA, Taylor R, Minor BL, et al. The REDCap consortium: Building an international
629 community of software platform partners. *J Biomed Inform.* 2019 Jul;95:103208.
- 630 [14] McCulloch DJ, Kim AE, Wilcox NC, et al. Comparison of Unsupervised Home Self-collected
631 Midnasal Swabs With Clinician-Collected Nasopharyngeal Swabs for Detection of
632 SARS-CoV-2 Infection. *JAMA Netw Open* [Internet]. 2020 Jul 22 [cited 2021 Jan
633 28];3(7):e2016382. Available from:
634 <https://jamanetwork.com/journals/jamanetworkopen/fullarticle/2768535>
- 635 [15] Chu HY, Boeckh M, Englund JA, et al. The Seattle Flu Study: a multiarm community-based
636 prospective study protocol for assessing influenza prevalence, transmission and
637 genomic epidemiology. *BMJ Open* [Internet]. 2020 [cited 2021 Jan 28];10(10):e037295.
638 Available from: <https://bmjopen.bmj.com/lookup/doi/10.1136/bmjopen-2020-037295>
- 639 [16] Srivatsan S, Han PD, van Raay K, et al. Preliminary support for a “dry swab, extraction
640 free” protocol for SARS-CoV-2 testing via RT-qPCR. *bioRxiv* [Preprint]. 2020 Apr 23.
- 641 [17] Weil AA, Newman KL, Ong TD, et al. Cross-Sectional Prevalence of SARS-CoV-2 Among
642 Skilled Nursing Facility Employees and Residents Across Facilities in Seattle. *J Gen
643 Intern Med* [Internet]. 2020 Sep 1 [cited 2021 Feb 1];1–6. Available from:
644 <https://www.ncbi.nlm.nih.gov/pmc/articles/PMC7462112/>
- 645 [18] Bedford T, Greninger AL, Roychoudhury P, et al. Cryptic transmission of SARS-CoV-2 in
646 Washington state. *Science* [Internet]. 2020 Oct 30 [cited 2021 Feb 1];370(6516):571–5.
647 Available from: <https://science.sciencemag.org/content/370/6516/571>
- 648 [19] [seattleflu/assembly](https://github.com/seattleflu/assembly) [Internet]. Seattle Flu Study; 2021 [cited 2021 Feb 1]. Available from:
649 <https://github.com/seattleflu/assembly>
- 650 [20] Hadfield, J., Megill, C., Bell, S. M., Huddleston, J., Potter, B., Callender, C., ... & Neher, R. A.
651 (2018). Nextstrain: real-time tracking of pathogen evolution. *Bioinformatics*, 34(23), 4121-4123.
- 652 [21] Shu, Yuelong, and John McCauley. "GISAID: Global initiative on sharing all influenza data—from
653 vision to reality." *Eurosurveillance* 22.13 (2017): 30494.
- 654 [22] Office of Enrollment Information Services: Data Management. Quick Stats: Seattle
655 Enrollment Autumn 2020 [Internet]. University of Washington. 2020. Available from:
656 [https://studentdata.washington.edu/wp-](https://studentdata.washington.edu/wp-content/uploads/sites/3/2020/10/Quick_Stats_Seattle_Autumn_2020-1.pdf)
657 [content/uploads/sites/3/2020/10/Quick_Stats_Seattle_Autumn_2020-1.pdf](https://studentdata.washington.edu/wp-content/uploads/sites/3/2020/10/Quick_Stats_Seattle_Autumn_2020-1.pdf)
- 658 [23] Office of Enrollment Information Services: Data Management. Quick Stats: Tacoma
659 Enrollment Autumn 2020 [Internet]. University of Washington. 2020. Available from:
660 [https://studentdata.washington.edu/wp-](https://studentdata.washington.edu/wp-content/uploads/sites/3/2020/10/Quick_Stats_Tacoma_Autumn_2020-1.pdf)
661 [content/uploads/sites/3/2020/10/Quick_Stats_Tacoma_Autumn_2020-1.pdf](https://studentdata.washington.edu/wp-content/uploads/sites/3/2020/10/Quick_Stats_Tacoma_Autumn_2020-1.pdf)
- 662 [24] Office of Enrollment Information Services: Data Management. Quick Stats: Bothell
663 Enrollment Autumn 2020 [Internet]. University of Washington. Available from:

- 664 [https://studentdata.washington.edu/wp-](https://studentdata.washington.edu/wp-content/uploads/sites/3/2020/10/Quick_Stats_Bothell_Autumn_2020-1.pdf)
665 [content/uploads/sites/3/2020/10/Quick_Stats_Bothell_Autumn_2020-1.pdf](https://studentdata.washington.edu/wp-content/uploads/sites/3/2020/10/Quick_Stats_Bothell_Autumn_2020-1.pdf)
- 666 [25] University of Washington COVID-19 Case Tracking Dashboard [Internet]. University of
667 Washington. Available from: <https://www.washington.edu/coronavirus/testing-results/>
- 668 [26] COVID-19 Data Dashboard [Internet]. Washington Department of Health. Available from:
669 <https://www.doh.wa.gov/Emergencies/COVID19/DataDashboard>
- 670 [27] Pray IW. Trends in Outbreak-Associated Cases of COVID-19 — Wisconsin, March–
671 November 2020. MMWR Morb Mortal Wkly Rep [Internet]. 2021 [cited 2021 Jan 29];70.
672 Available from: <https://www.cdc.gov/mmwr/volumes/70/wr/mm7004a2.htm>
- 673 [28] Richmond CS, Sabin AP, Jobe DA, et al. SARS-CoV-2 sequencing reveals rapid
674 transmission from college student clusters resulting in morbidity and deaths in vulnerable
675 populations. medRxiv [Preprint]. 2020 Oct 14 [cited 2021 Jan 29];2020.10.12.20210294.
676 Available from: <https://www.medrxiv.org/content/10.1101/2020.10.12.20210294v1>
- 677 [29] Vang KE, Krow-Lucal ER, James AE, et al. Participation in Fraternity and Sorority Activities
678 and the Spread of COVID-19 Among Residential University Communities - Arkansas,
679 August 21-September 5, 2020. MMWR Morb Mortal Wkly Rep. 2021 Jan 8;70(1):20–3
- 680 [30] Losina E, Leifer V, Millham L, et al. College Campuses and COVID-19 Mitigation: Clinical
681 and Economic Value. Ann Intern Med. 2020 Dec 21.
- 682 [31] SCAN Data Results and Technical Report #3 [Internet]. Greater Seattle Coronavirus
683 Assessment Network. 2020 Aug 3 [cited 2021 Feb 14]. Available from:
684 [https://publichealthinsider.com/wp-content/uploads/2020/08/8.3-SCAN-Technical-](https://publichealthinsider.com/wp-content/uploads/2020/08/8.3-SCAN-Technical-Report-3_FINAL_CLEAN.pdf)
685 [Report-3_FINAL_CLEAN.pdf](https://publichealthinsider.com/wp-content/uploads/2020/08/8.3-SCAN-Technical-Report-3_FINAL_CLEAN.pdf)