

1
2
3
4
5
6
7
8
9
10
11
12
13
14
15
16
17
18
19
20
21
22
23
24
25

Impact of Vaccine Prioritization Strategies on Mitigating COVID-19: An Agent-Based
Simulation Study using an Urban Region in the United States

Hanisha Tatapudi¹, Rachita Das², and Tapas K. Das¹

¹ Department of Industrial and Management System Engineering, University of South Florida, Tampa, Florida, USA.

² Miller School of Medicine, University of Miami, Miami, Florida, USA.

Corresponding author: Hanisha Tatapudi

ABSTRACT

26
27
28
29
30
31
32
33
34
35
36
37
38
39
40
41
42
43
44
45
46
47
48
49
50
51
52
53

Background

Approval of novel vaccines for COVID-19 has brought hope and expectations, but not without additional challenges. One central challenge is how to appropriately prioritize the use of limited supply of vaccines. This study evaluates various prioritization strategies and the efficacy of the vaccination campaign underway in the U.S.

Methods

The study develops a granular agent-based simulation model for mimicking community spread of COVID-19 under various social interventions including full and partial closures, isolation and quarantine, use of face mask and contact tracing, and vaccination. The model is populated with demographic and societal data for an urban community in the U.S. with 2.8 million residents as well as viral parameters. The model tracks daily numbers of infected, hospitalized, and deaths for all census age-groups. Model is calibrated using parameters for viral transmission and level of community circulation of individuals. Published data from the Florida COVID-19 dashboard is used to validate the model. Vaccination strategies are compared using hypothesis test for pairwise comparisons.

Results

Three prioritization strategies examined are: a close variant of the CDC recommendation, an age-stratified strategy, and a random strategy. The impact of vaccination is also contrasted with a no vaccination scenario. The comparison shows that the ongoing campaign in the U.S. using vaccines developed by Pfizer/BioNTech and Moderna is expected to 1) reduce the cumulative number of infection by 10% and 2) help the pandemic to subside below a small threshold of 100 daily new reported cases sooner by approximately a month. The prioritization strategies when compared with each other showed no significant difference in their impacts on pandemic mitigation.

Conclusions

Recent explosive growth of the number of new COVID-19 cases in the U.S. continues to shrink the susceptible population. This, we believe, will likely limit the expected number of people that could be prevented from getting infected due to vaccination. A shrinking susceptible pool may also be an attributable reason for the observed lack of statistical difference among the outcomes of the prioritization strategies. However, the invariance of the strategies should give more latitude for decision makers in COVID-19 vaccine distribution.

54 Keywords: Vaccination strategies, COVID-19, Agent-based simulation model, Vaccination policies, Vaccination
55 prioritization

56 LIST OF ABBREVIATIONS
57

58 AB – Agent-based

59 SEIR – Susceptible – exposed – infected – recovered/removed

60 SARS-CoV-2 – Severe acute respiratory syndrome coronavirus 2

61 COVID-19 – Coronavirus Disease 2019

62 USFDA – United States Food and Drug Administration

63 CDC – Centers for Disease Control

64 NAESM – National Academy of Sciences, Engineering, and Medicine

65 QALY – Quality of Life Years

66

67

68

69

70

71

72

73

74

75

76

77

78

79

80

81

105 e-mail: tatapudi@mail.usf.edu.

106 Telephone: +1 (813) 453-3577

107

108 Rachita Das

109 e-mail: rachi95@gmail.com

110 Telephone: +1 (813) 527-1133

111

112 Tapas K. Das

113 e-mail: das@usf.edu

114 Telephone: +1 (813) 843-0285

115

116

117

118

119

120

121

122

123

124

125

126

127

128

129

130

131

132

133
134
135
136
137
138
139
140
141
142
143
144
145
146
147
148
149
150
151
152
153
154
155
156
157
158
159

INTRODUCTION

SARS-CoV-2 and resulting COVID-19 disease has been raging world-wide since early 2020, killing over 2.0 million globally and nearly 450,000 in the United States by the end of January 2021 [12]. A significant winter swell in cases is underway in the U.S. despite protective measures in place such as face mask usage, limited contact tracing, travel restrictions, social distancing practices, and partial community closures. To combat this, many promising novel vaccines have been under development, of which two (Pfizer/BioNTech and Moderna) have been authorized for emergency use since mid-December 2020 by the U.S. Food and Drug Administration (USFDA) [26]. Data from initial trials of cohorts greater than 30,000 people showed that these vaccines, given in two doses, are safe and have ~95% effectiveness in preventing COVID-19 [23]. Vaccine deployment in the U.S. began soon after USFDA approval.

Implementing an effective vaccination campaign will be essential to dramatically reduce the infection, hospitalization, and death rates, but it poses many unique challenges. Vaccine prioritization and allocation strategy is at the forefront of the challenges to effectively vaccinate communities. Strategy is influenced by a number of key factors: 1) limited initial vaccine supply in the months following release, 2) transmission and severity of COVID-19 varying by segment of the population, 3) vaccine approvals only for adults, and 4) acceptability and compliance in the community for two dose vaccination [4].

U.S. Centers for Disease Control (CDC) has released an outline prioritizing healthcare personnel, first responders, persons with high risk medical conditions for COVID-19, and older adults >65 years. These groups will be given priority for vaccination in phase 1, defined as when vaccine supply is still limited. In phase 2 (supply increases to begin to meet demand) and phase 3 (supply is greater than demand), other population groups begin to be vaccinated based on age and availability [25]. Vaccine allocation structures with basic similarities and some key differences are being used by countries around the world. For example, after healthcare workers, France's vaccine allocation is scheduled to include other general workers regardless of age who they have determined to be at high risk of contracting and spreading the virus due to contact with the general public. This includes retail, school,

160 transportation, and hospitality staff [17]. Such differences in vaccine prioritization structures are as of yet untested
161 and warrant modeling and examination.

162
163 The goal of this paper is to investigate the impact of vaccination on the pandemic via outcome measures of numbers
164 of infected, hospitalized, and dead in the months following December 15, 2020, when vaccination began in the U.S.
165 Two specific objectives of our investigation are: 1) to assess the expected impact of the vaccination program that is
166 currently underway on mitigating COVID-19, and 2) to inform public health officials on the comparative benefits, if
167 any, of the different vaccine prioritization strategies. We conduct our investigation by using our agent-based (AB)
168 simulation model for COVID-19 that was presented recently in [19]. We first extended calibration of our model till
169 December 30, 2020 to ensure that our model appropriately tracks the explosive increase in cases that started with the
170 onset of winter and the year-end holiday period. We then enhanced the model by adding a framework for
171 vaccination. This included: vaccination priorities for people based on attributes including profession and age, use of
172 two different vaccines by Pfizer/BioNTech and Moderna with their contracted quantities and approximate delivery
173 timelines, acceptability of vaccines to prioritized cohorts (approximately 60% based on national survey data [3,18]),
174 transition period between each priority group, vaccination rate, and immunity growth for vaccinated starting with the
175 first dose.

176
177 As in [19], we implement our calibrated AB model, augmented with vaccination, for Miami-Dade County of the
178 U.S. with 2.8 million population, which has been an epicenter of COVID-19 in the U.S. We conduct our
179 investigation by implementing four different strategies (including no vaccination) and obtaining the corresponding
180 numbers of total infections, reported infections, hospitalizations, and deaths. We compare and contrast the numbers
181 to assess vaccination efficacy and relative performances of the priority strategies. The vaccination strategies that we
182 investigate are a close variant of the CDC recommended strategy, an age-stratified strategy, and finally a random
183 strategy. We make a number of key observations from the results, which we believe will help public health officials
184 around the world to choose effective vaccine prioritization strategies to mitigate the negative impacts of COVID-19.

185
186 LITERATURE REVIEW

187 Vaccine prioritization and allocation are among the key challenges to strategically vaccinate communities during a
188 pandemic outbreak. On a global scale, equitable and ethical distribution of vaccines for all (low, medium, and high-
189 income) countries is an important question. As the world leader in promoting global health, WHO released an
190 evidence-based framework for vaccine-specific recommendations [24]. WHO proposed vaccine prioritization for
191 three potential scenarios of transmission: community transmission, sporadic cases or cluster of cases, and no cases.
192 Each scenario has three stages and focuses on different risk groups. COVID-19 pandemic resembles “community
193 transmission.” For this, the first stage focuses on healthcare workers and older adults with highest risk; second stage
194 continues the focus on older adults and people with comorbidities, sociodemographic groups, and educational staff;
195 and the third stage focuses on essential workers and social/employment groups unable to physically distance
196 themselves.

197 National Academy of Sciences, Engineering, and Medicine (NAESM) developed a more comprehensive phased
198 framework for equitable allocation of COVID-19 vaccine [29]. The first phase prioritizes healthcare workers and
199 first responders, people with high risk comorbidities, and older adults in overcrowded living conditions; second
200 phase focuses on K-12 school staff and child care workers, essential workers, people with moderate risk
201 comorbidities, people living in shelters, physically and mentally disabled people and staff that provide care,
202 employment settings where social distancing is not possible, and remaining older adults; third phase prioritizes
203 young adults, children, and workers; and fourth phase includes everyone else. No specific studies have yet been
204 presented to the literature that evaluate the efficacy of the proposed vaccination priorities for mitigating COVID-19.

205 A number of studies can be found in the literature on vaccination strategies for controlling outbreaks of other
206 viruses. The work presented in [8] analyzes the effect of both CDC guided targeted vaccination strategy as well as a
207 mass vaccination strategy for seasonal Influenza outbreaks in the U.S. The study found that a mass vaccination
208 policy reaped the most benefits both in terms of cost and quality-of-life years (QALYs) lost. Authors in [15] use a
209 genetic algorithm to find optimal vaccine distribution strategies that minimize illness and death for influenza
210 pandemics with age specific attack rates similar to the 1957–1958 A(H2N2) Asian influenza pandemic and the
211 1968–1969 A(H3N2) Hong Kong influenza pandemic. They consider coverage percentage under varying vaccine
212 availability and develop an optimal vaccination approach that is 84% more effective than random vaccination. A
213 study reported in [14] examined vaccination to prevent interpandemic influenza for high-risk groups and children,

214 and recommended concentrating on schoolchildren, most responsible for transmission, and then extend to high-risk
215 groups. A compartmental model in [13] was used to develop optimal strategies to reduce the morbidity and mortality
216 of the H7N9 pandemic. The study found that age specific vaccination schedules had the most beneficial impact on
217 mortality.

218 It can be concluded from the above review of relevant literature that there is no ‘one size fits all’ strategy for
219 vaccination to either prevent a pandemic outbreak or mitigate one. Virus epidemiology and corresponding disease
220 characteristics, as well as the efficacy and supply of the vaccine must be considered in developing an effective
221 vaccination prioritization strategy. Our paper aims to address this need by presenting a detailed AB simulation
222 modeling approach and using it to assess efficacy of vaccine prioritization strategies for COVID-19.

223

224 METHODOLOGY

225 Published COVID-19 modeling approaches are either data-driven models, as in [2, 5, 7, 9, 20], or variants of SEIR
226 type compartmental models as in [1, 11, 16, 21, 22]. Data driven models are very well suited for understanding the
227 past progression of a pandemic and also for estimating parameters characterizing virus epidemiology. However,
228 these models offer limited ability to predict the future progression of a pandemic that is dynamically evolving with
229 regards to virus epidemiology, disease manifestations, and sociological conditions. Compartmental models, on the
230 other hand, are aggregate in nature and do not adapt well to changing dynamics of disease transmission. An AB
231 modeling approach is considered to be more suitable for a detailed accounting of individual attributes, specific
232 disease natural history, and complex social interventions [6].

233

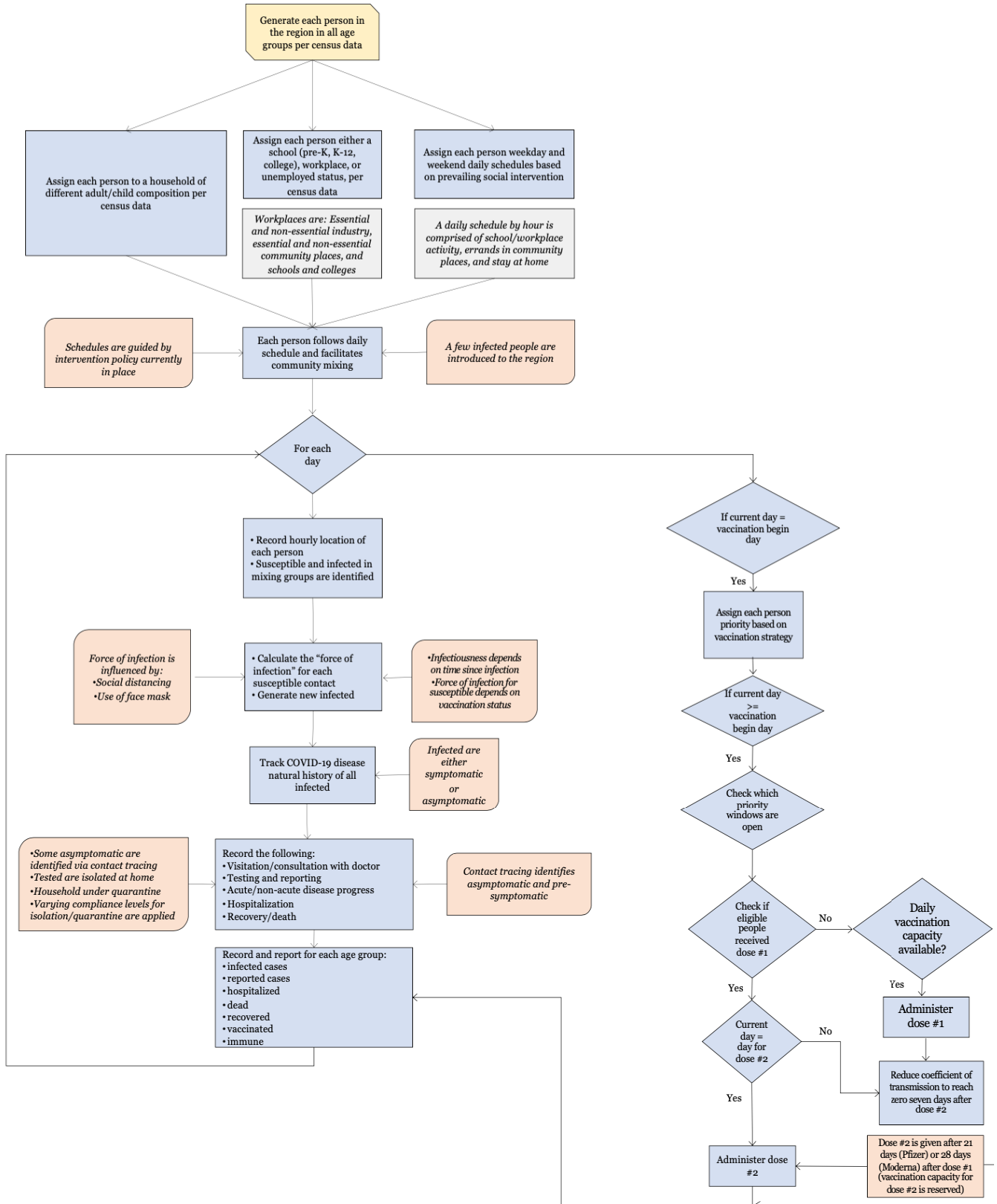
234 We use an enhanced version of our AB simulation model that was developed to examine various social intervention
235 strategies for COVID-19 [19]. The AB simulation model replicates the dynamics of the pandemic outbreak by
236 incorporating: 1) population demography of the outbreak region for all age groups and employment categories, 2)
237 numbers, sizes, and compositions of households, schools, workplaces, and community places, 3) daily schedules for
238 people of all age groups before and during the intervention orders (e.g., stay-at-home), 4) isolation of infected and
239 quarantine of household members, 5) closure and reopening of schools, workplaces, and community places, 6)
240 compliance to isolation and quarantine requirements, 7) face mask usage, 8) contact tracing, 9) prioritization of

241 people for vaccination, 10) vaccinating those willing to receive based on supply and priority windows, 11)
242 epidemiological parameters of the virus, 12) infection spread, and 13) disease natural history. The key
243 epidemiological parameters include: disease natural history with average lengths of latent, incubation, symptomatic,
244 and recovery periods; distribution of infectiousness; percent asymptomatic; and fatality rate.

245
246 As in the model presented in [19], each day our model tracks the following for each person: 1) hourly movements
247 and locations based on their daily schedules that depend on age, employment status, prevailing social intervention
248 orders, and quarantine/isolation status; 2) hourly contacts with other susceptible and infected; 3) vaccination status
249 and immunity, 4) force of infection accumulation; 5) start of infection; 6) visit/consult with a doctor (if symptomatic
250 and insured); 7) testing (if infected and visited/consulted a doctor or asymptomatic chosen for testing either
251 randomly or via contact tracing); 8) test reporting delay; 9) disease progression (if infected); 10) hospitalization (if
252 infected and acutely ill); and 11) recovery or death (if infected). The AB model reports daily and cumulative values
253 of actual infected, reported infections, hospitalized, and dead, for each age category. A schematic diagram depicting
254 the algorithmic sequence and parameter inputs for the AB simulation model is presented in Figure 1.

255
256 The AB simulation-based methodology is particularized using data for Miami Dade County of Florida, with 2.8
257 million population, an epicenter for COVID-19 spread in the South-Eastern United States. A step by step approach
258 for building such a model for another region can be found in [19]. The methodology begins by generating the
259 individual people according to the U.S. census data that gives population attributes including age (see Table A1 in
260 [19]) and occupational distribution (see Table A4 in [19]). Thereafter, it generates the households based on their
261 composition characterized by the number of adults and children (see Table A2 in [19]). The model also generates,
262 per census data, schools (see Table A3 in [19]) and the workplaces and other community locations (see Table A4 in
263 [19]). Each individual is assigned a household, while maintaining the average household composition, and,
264 depending on the age, either a school or a workplace (considering employment levels). A daily (hour by hour)
265 schedule is assigned to every individual, chosen from a set of alternative schedules, based on their attributes. The
266 schedules vary between weekdays and weekends and also depend on the prevailing social intervention orders (see
267 Table A5 in [19]).

268



269

270

271

Figure 1: Schematic of the AB model for mimicking COVID-19 spread under social interventions and vaccination in the U.S.

272 Simulation begins on the day when one or more infected people are introduced to the region (referred to as
273 simulation day 1). Simulation model tracks hourly movements of each individual (susceptible and infected) every
274 day, and records for each susceptible the number of infected contacts and their identification at each location. Based
275 on the level of infectiousness of each infected contact (which depends on the day of his/her infectiousness period),
276 the model calculates the daily force of infection received by each susceptible from all infected contacts at all hours
277 of the day [10]. Since the exact immune response from vaccine is not known yet, we assume a linearly increasing
278 partial immunity for susceptibles after they receive the first dose, attaining full immunity after seven days after the
279 second dose; we have so far only considered vaccines made by Pfizer/BioNTech and Moderna. Following the
280 assumption made in [19], the daily force of infection is considered to accumulate. However, it is assumed that if a
281 susceptible does not gather any additional force of infection (i.e., does not come in contact with any infected) for
282 two consecutive days, the cumulative force of infection for the susceptible reduces to zero. At the end of each day,
283 the model uses cumulative force of infection to calculate the probability of infection for each susceptible. The model
284 updates the infection status of all individuals to account for new infections as well as disease progressions of
285 infected individuals. A pseudo-code in Figure 2 depicts the major elements and structure of the AB simulation
286 program.

287
288
289
290
291
292
293
294
295
296
297
298
299

300

Main

```

1 for simulation_day = 0,...,max_day
2   if simulation_day = 0
3     generate_entities()
4     generate_businesses()
5     initialize_outbreak() // Introduces a small number of infected individuals who are contagious
6     begin_outbreak() // Begin interaction among infected and susceptible and start community spread
7     report (infected, tested, reported, hospitalized, death) // Keeps track of daily age specific numbers

```

Function: Generate entities

```

1 // Generates population in the region based on census and assigns them to household and
2   workplace/school (including those unemployed who stay at home)
3 for household = 1,...,total_household_types
4   n1 = number of adults
5   n2 = number of children
6   for i = 1,...,n1
7     assign_age_household_workplace()
8   for j = 1,...,n2
9     assign_age_household_school()

```

Function: Generate businesses

```

1 // Generates businesses in the region based on census data and
2 // classifies them as essential and non-essential industries and community places
3 for business = 0,...,total_business_types
4   initialize_mixing_groups() // Creates smaller mixing groups (departments) within each
5     business and assigns employees

```

Function: Begin outbreak

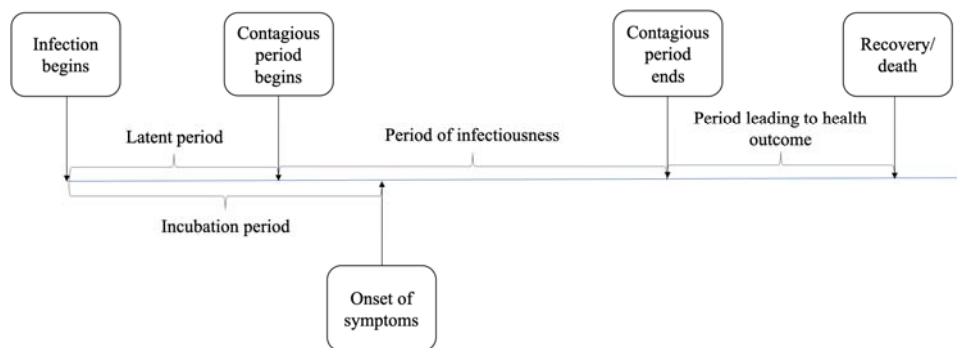
```

1 // Assigns daily schedules based on prevailing social intervention, tracks hourly social mixing, accounts for
2   viral transmission, creates new infections, tests and reports infected, tracks disease progress for infected, monitors
3   stay at home/hospitalization, and records recovery and death
4 if simulation_day < lockdown_day
5   schedule = schedule_1 // Pre-pandemic schedule
6 if (simulation_day >= lockdown_day) and (simulation_day < Phase_I)
7   schedule = schedule_2 // Schedule after lockdown begins (closure of non-essential places and schools and
8     partial opening of essential places with limited capacity)
9 if (simulation_day >= Phase_I) and (simulation_day < Phase_II)
10  schedule = schedule_3 // Schedule during Phase I of reopening (schools remain closed, partial opening of
11    essential and non-essential with limited capacity)
12 if (simulation_day >= Phase_II) and (simulation_day < Full_reopening)
13  schedule = schedule_4 // Schedule during Phase II of reopening (schools remain closed, increased partial
14    opening of essential and non-essential places)
15 for hour = 1,...,24
16  disease_progress() // Monitors disease condition along disease natural history on an hourly basis for
17    each infected individual
18  tracking_individuals() // Tracks infected and susceptible in the same location (mixing group) by the hour and
19    calculates added force of infection for susceptible and tracks viral accumulation
20  infection_process() // At the end of each day, infection status of each susceptible with
21    any viral accumulation is determined
22  testing() // Tests symptomatic and some selected asymptomatic based on test availability and
23    reports outcome considering test sensitivity and reporting delay
24  hospitalization() // Tracks hospitalization of symptomatic developing acute condition
25
26 if (simulation_day = vaccination_begin_day)
27   assign_vaccination_willingess() // We assume 60% of the population is willing to be vaccinated
28   assign_vaccine_priority() // Vaccine priority is assigned by chosen criteria (age and profession)
29
30 if (simulation_day >= vaccination_begin_day)
31   for each willing and priority eligible individual
32     if (received first dose)
33       if (current_day = second_dose_day)
34         administer_dose_2() // Dose 2 is administered 21 days after first dose for Pfizer
35           vaccine and 28 days for Moderna vaccine
36     else
37       administer_dose_1()
38       reduce_transmission_coefficient() // Reduce coefficient of transmission to reach zero seven days
39         after dose #2
40
41 recovery() or death() // Tracks recovery or death for individuals in home/hospitals

```

301

302 Figure 2: Pseudo-code for agent-based simulation model of COVID-19 with implementation of two-dose vaccines

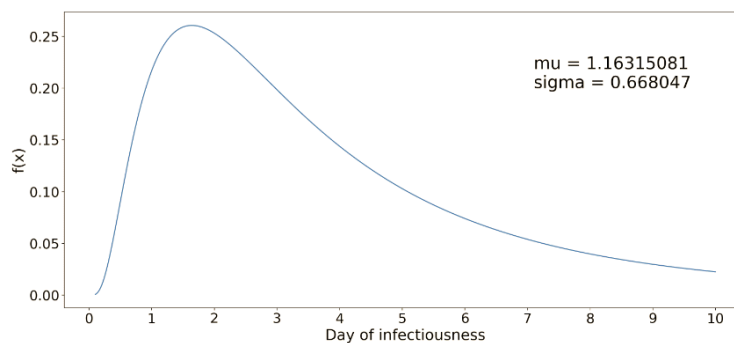


303

304 Figure 3: Disease natural history of COVID-19 [19]

305

306 The infected people are considered to follow a disease natural history as shown in Figure 3, parameters of which can
 307 be found in Table A6 of [19]. The model assumes that the recovered cases become fully immune to further COVID-
 308 19 infections. However, since this assumption is not fully supported yet by data, people recovered from COVID-19
 309 are also considered candidates for vaccination. The duration and intensity of infectiousness is considered to be
 310 guided by a lognormal density function (see Figure 4). The function is truncated at the average length of the
 311 infectiousness period (which is considered to be 9.5 days). Asymptomatic cases are assumed to follow a similar
 312 infectiousness intensity profile but scaled by a factor in the force of infection calculation (1) (see Table A7 in
 313 [19]).



314

315 Figure 4: Lognormal distribution function for infectiousness profile of a COVID-19 case [19]

316

317 The AB model estimates the probability of infection for a susceptible using the accumulated value of *daily force of*
 318 *infection* (), which is calculated as follows.

$$319 \quad \lambda_i = \sum_{k|h_k=h_i} \frac{I_k \beta_h^k (t-\tau_k) \rho_k [1+C_k(\omega-1)]}{n_i^\alpha} + \sum_{j,k|i_k^j=i_i^j} \frac{I_k \beta_p^j (t-\tau_k) \rho_k [1+C_k(\omega-1)]}{m_i^j}. \quad (1)$$

320
 321 Equation (1) is a modified version of the force of infection equation given in [10], parameters of which can be found
 322 in Table A7 of [19]. The force of infection is gathered by a susceptible individual each day from all infected contacts
 323 in his/her mixing groups (home, school/workplace, and community places). The cumulative value of λ_i is used at the
 324 end of each day to calculate the probability of infection as $1 - \exp^{-\lambda_i}$.

325
 326 The AB model incorporates all applicable intervention orders like stay-at-home, school and workplace closure and
 327 reopening, isolation of symptomatic cases at home, and quarantine of household members of those who are infected.
 328 The model also considers: varying levels of compliances for isolation and quarantine, lower on-site staffing levels of
 329 essential work and community places during stay-at-home order, restricted daily schedule of people during various
 330 social intervention periods, phased lifting of interventions, use of face masks, contact tracing with different target
 331 levels to identify asymptomatic and pre-symptomatic cases, and vaccination. The timeline for social interventions
 332 implemented in the model are summarized in Table 1. For many other salient features of our AB simulation model,
 333 such as percentages of asymptomatic and uninsured with no access to doctor referral needed for testing during early
 334 days of the pandemic, CDC's changing testing guidelines, test sensitivity and specificity, test result reporting delay,
 335 etc., readers are referred to [19].

Intervention policy implemented at Miami-Dade County, Florida, U.S.	Date of implementation	Day of Simulation
<i>Stay at home policy</i>	March 17 2020	35
<i>Phase I reopening</i>	May 18 2020	97
<i>Phase II reopening</i>	June 5 2020	115
<i>Mandatory usage of Face mask</i>	June 25 2020	135
<i>Contact tracing (assumed to begin)</i>	June 30 2020	140
<i>Phase III reopening</i>	September 25 2020	227
<i>School reopening</i>	September 30 2020	232
<i>Vaccination begin day</i>	December 15 2020	308

336 Table 1: Social intervention order timeline for Miami-Dade County [27]
 337

338 As observed in [19], though it is implemented for a specific region, our model is quite general in its usability for
 339 other urban regions with similar demography, societal characteristics, and intervention measures. In our model,
 340 demographic inputs (age and household distribution, number of schools for various age groups, and number of

341 workplaces of various types and sizes) are curated from both national and local census records. Social interventions
342 vary from region to region and the related parameters can be easily updated. Similarly, the data related to
343 epidemiology of COVID-19 are unlikely to be significantly vary from one region to another, though some
344 adjustments of these based on population demographics may be needed.

345

346 **Model Calibration**

347 The AB model utilizes a large number of parameters, which are *demographic*, *epidemiological*, and *social*
348 *intervention parameters*. We kept almost all of the above parameters fixed at their respective chosen values and
349 calibrated the model by changing values for only a few. The calibrated parameters include the transmission
350 coefficients used in calculating force of infection at home, work, school, and community places (β_h and β_p^j). The
351 choice of the values of transmission coefficients was initially guided by [10] and thereafter adjusted at different
352 points in time during the calibration period (until December 30, 2020). The only other parameters that were
353 calibrated are the number of errands in the daily schedules under various intervention conditions and the percentage
354 of workers in essential (e.g., healthcare, utility services, and grocery stores) and non-essential (e.g., offices and
355 restaurants) workplaces who physically reported to work during different intervention periods. Calibration of the
356 above parameters was done so that the daily cumulative numbers of reported infected cases from the AB simulation
357 model closely match the values published in the Florida COVID-19 dashboard until December 30, 2020. Figure 5
358 shows the daily cumulative average values (with 95% confidence intervals) for the reported infected cases,
359 hospitalizations, and deaths as obtained from the simulation model. The dotted lines represent the actual numbers
360 reported in the Florida COVID-19 dashboard for Miami-Dade County [28].

361

362

363

364

365

366

367

368

369

370

371

372

373

374

375

376

377

378

379

380

381

382

383

384

385

386

387

388

389

390

391

392

393

394

395

396

397

398

399

400

401

402

403

404

405

406

407

408

409

410

411

412

413

414

415

416

417

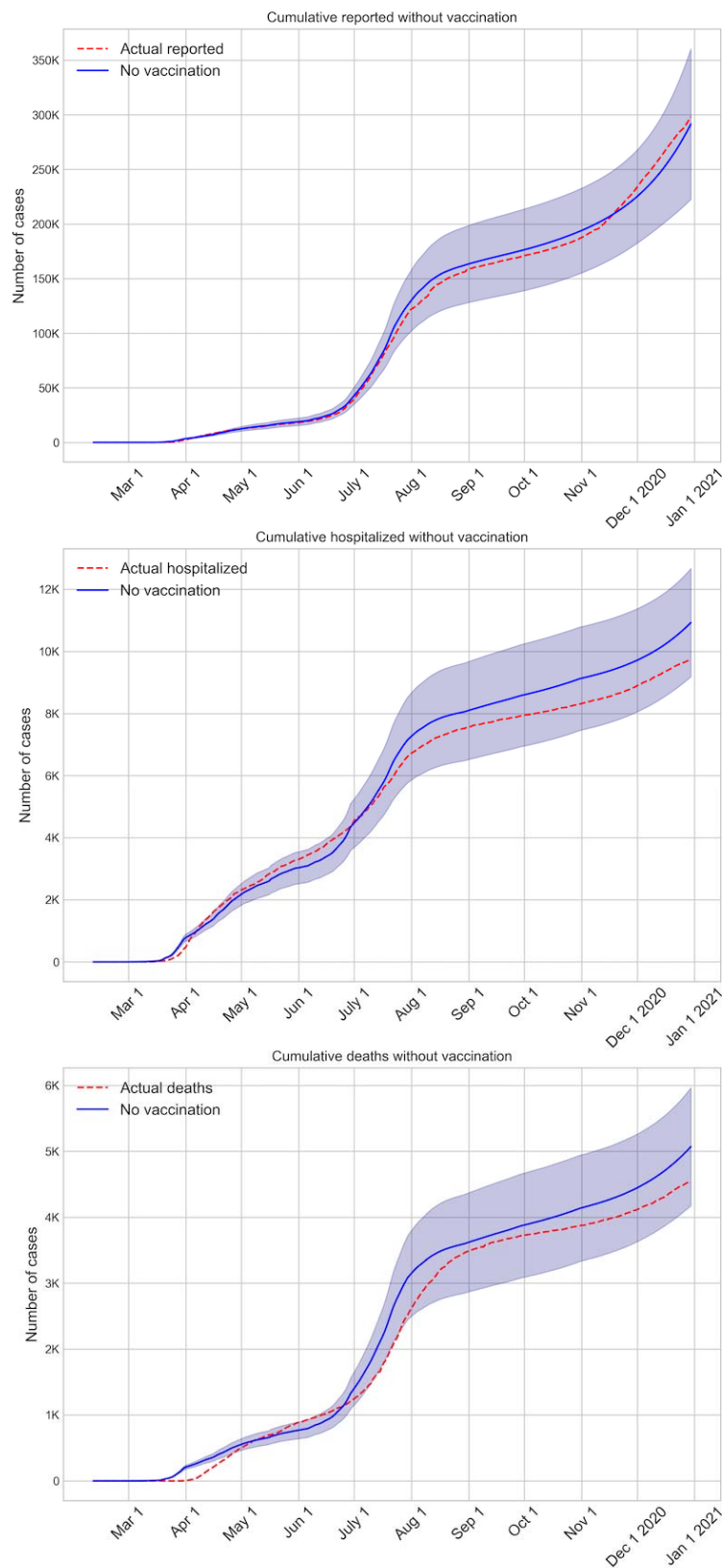
418

419

420

421

422



423
424
425
426
427

428

429
430
431
432
433
434
435
436
437
438
439
440
441
442
443
444

445
446
447
448
449
450
451
452

Figure 5: Validation graphs with average daily cumulative values of infected, reported, and death calibrated until Dec 30, 2020

VACCINE PRIORITIZATION STRATEGIES

We used our AB model to examine the expected benefits of the ongoing vaccination in the U.S. using the limited supply of two types of vaccines developed by Pfizer/BioNTech and Moderna, which currently have the emergency approvals for distribution. We considered the number of vaccine doses that the two companies are contracted by the U.S. government to supply, which include the initial contracts for 100 million doses from each company and the more recent contract for an additional 100 million doses from Pfizer/BoiNTech. That makes it a total of 300 million doses which can inoculate 150 million people, as both vaccines require two doses to be administered 21 days and 28 days apart, respectively for Pfizer/BioNTech and Moderna. To our knowledge, the total supply is being apportioned among the states and the counties depending on the population. Florida has approximately 6.5% of the U.S. population and the Miami Dade County has 13% of Florida's population. Hence, we assumed that Miami Dade County will receive approximately 2.54 million doses and be able to vaccinate 1.27 million people out of the total 2.8 million population. We also assumed that the vaccine deliveries will occur in batches starting in late December 2020 till late June 2021. Our study goal was to first determine the extent of reduction in the number of infections, hospitalizations, and deaths that we can expect to realize from the vaccination process in comparison with if no vaccines were available. Thereafter, we conducted a comparative study between three different vaccination priority schemes to determine if the outcomes (number of reported cases, hospitalized, and dead) from those are statistically significant.

453
454
455

	Priority 1	Priority 2	Priority 3	Priority 4	Priority 5
Age stratified strategy	<ul style="list-style-type: none"> Healthcare providers Nursing home residents Dec 15, 2020 – Jan 13, 2021 	<ul style="list-style-type: none"> People of ages 65 and over Jan 14 – Feb 12 2021 	<ul style="list-style-type: none"> People of ages 55 to 64 Feb 13 – Mar 14 2021 	<ul style="list-style-type: none"> People of ages 45 to 54 Mar 15 – Apr 13, 2021 	<ul style="list-style-type: none"> People of ages 16 to 44 Apr 14 – Jul 15, 2021
Minor CDC variant strategy	<ul style="list-style-type: none"> Healthcare providers Nursing home residents Dec 15, 2020 – Jan 13, 2021 	<ul style="list-style-type: none"> First responders Educators People of ages 75 and over Jan 14 – Feb 12, 2021 	<ul style="list-style-type: none"> People of ages 65 to 74 Feb 13 – Mar 30, 2021 	<ul style="list-style-type: none"> People of ages 16 to 64 Apr 1 – Jul 15, 2021 	<ul style="list-style-type: none"> NA
Random strategy	<ul style="list-style-type: none"> Healthcare providers and nursing home residents Dec 15 2020 – Jan 13, 2020 	<ul style="list-style-type: none"> All people of ages 16 and over Jan 14 – Jul 15, 2021 	<ul style="list-style-type: none"> NA 	<ul style="list-style-type: none"> NA 	<ul style="list-style-type: none"> NA

456
457
458

Figure 6: Vaccine prioritization strategies examined using AB simulation model for COVID-19 in the U.S.

The priority strategies that were examined are broadly described here; a more complete description is presented in

Figure 6. In the absence of a declared timeline for transition of eligibility from one priority group to the next, we

assumed 30 days between transition. This period was extended to allow all eligible and willing to be vaccinated

when the phased vaccine supply fell short of the number of people in the eligible priority group. The first strategy

that we implemented is a close *variant of the CDC recommended strategy*: Priority 1: healthcare providers and

nursing home residents; Priority 2: first responders, educators, and people of ages 75 and over; Priority 3: people of

ages 65 to 74; Priority 4: people of ages 16 to 64. The CDC recommended strategy also includes in priority 3 people

of ages 16 to 64 with specific health conditions. Since we did not track health conditions in our AB model, we

limited our priority 3 to people of ages 65 and above only. The second strategy that we implemented is an *age-*

stratified strategy: Priority 1: healthcare providers and nursing home residents; Priority 2: people of ages 65 and

over; Priority 3: people of ages 55 to 64; Priority 4: people of ages 45 to 54; Priority 5: people of ages 16 to 44. The

third strategy that we implemented is a *random strategy*: Priority 1: healthcare providers and nursing home

residents; Priority 2: all people of ages 16 and over. People with prior COVID-19 history were not excluded and

60% of the people were considered willing to vaccinate [3, 18].

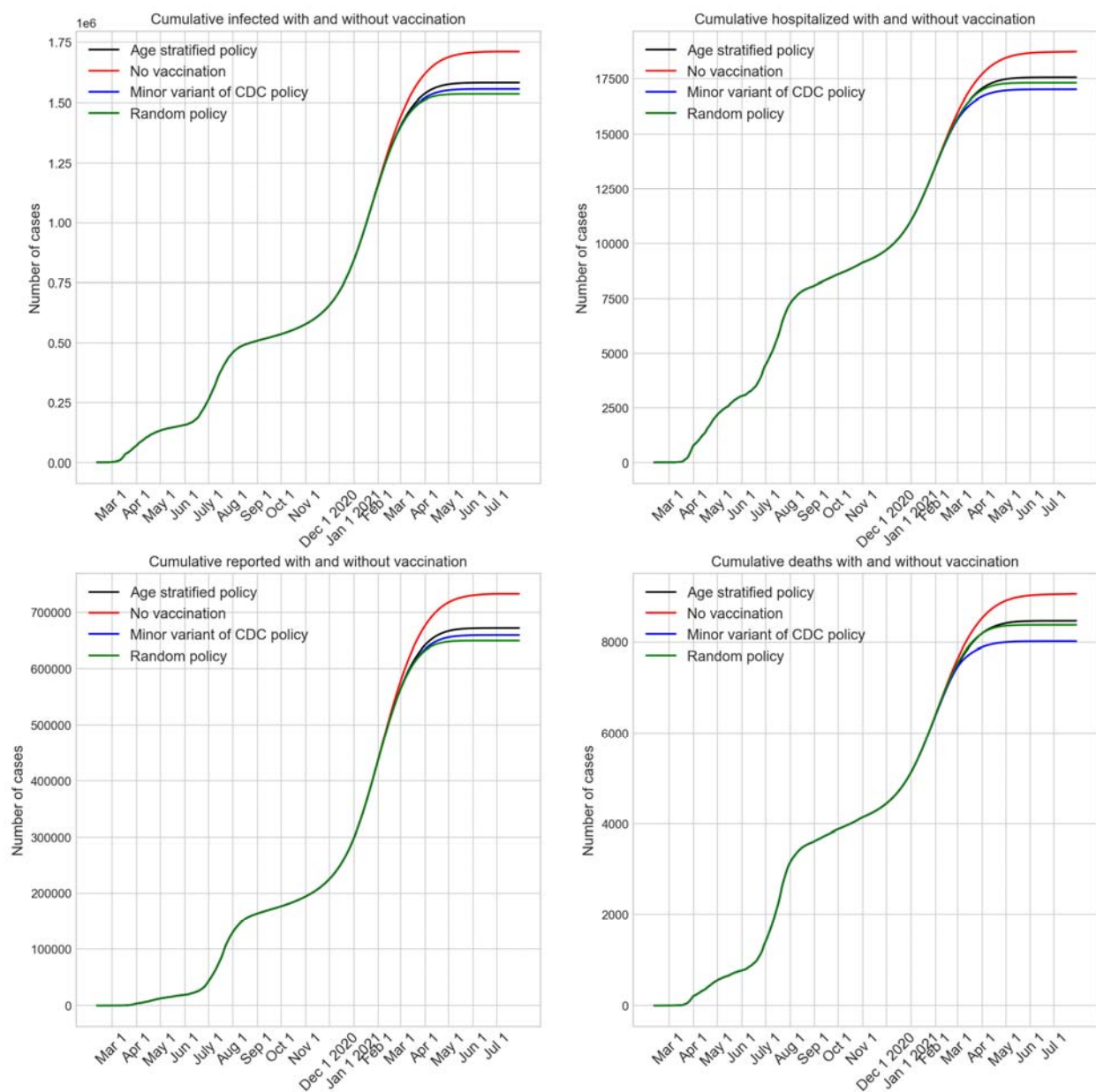
472
473
474
475
476
477
478
479
480
481
482
483
484
485
486
487
488
489
490
491
492
493
494
495
496
497
498
499

RESULTS

The strategy based on of the CDC recommendation achieves a reduction of 9%, 10%, 9%, and 11% for total infected, reported cases, hospitalized, and dead, respectively, compared to the outcomes with no vaccination. According to our model, with the close variant of CDC strategy the pandemic is likely to subside below a small threshold (100) of new reported cases by May 16, 2021 compared to June 12, 2021 if no vaccines were available (see Figure 7). Hence the likely net impact of vaccination in the urban Miami-Dade County of Florida will include sparing approximately 5.6% of the population from infection and achieving normalcy about a month sooner. This seemingly low impact of vaccination may be attributed to the fact that the trend of explosive growth of new cases in the winter months will have significantly reduced the pool of susceptible people by late spring, possibly approaching the ‘herd immunity’ state. Figure 7 presents the plots of AB model predicted outcomes for four scenarios: no vaccination and the three vaccine prioritization strategies. The plots show the average cumulative cases for infected (actual number of infected, which is not observed and can only be assessed through a model), reported cases, hospitalizations, and deaths. As can be seen, vaccination, irrespective of the strategy for prioritization, yields a significant reduction in the pandemic impact. Per our model, with no vaccination, the percentage of infected population will reach nearly 61% by mid-June of 2021.

500

501



502

503 Figure 7: Impact of vaccination strategies on cumulative numbers of infected, reported, hospitalized, and
504 dead from COVID-19

505

506 The performances of the three vaccine prioritization strategies, as seen in Figure 7 are comparable. Simple pairwise

507 comparisons of the reported number of cases using a test of hypothesis showed that the variant of the CDC policy

508 produces a statistically significant lower number of reported cases than the no vaccination (p-value 0.0204). Age-

509 stratified and random strategies also yield statistically significantly lower numbers of reported cases compared to
 510 vaccination. However, comparison among the three vaccine prioritization strategies showed no significant statistical
 511 difference for reported cases between strategies (p-values near 0.4). The numbers for hospitalizations and deaths
 512 also had a similar trend. The model predicted values of the cumulative numbers of infected cases, reported cases,
 513 hospitalized, and dead from the three policies and their 95% confidence intervals are presented in Table 2. The table
 514 also provides the time frame when the pandemic falls below the threshold of 100 new reported cases. We observed
 515 from the Florida COVID-19 dashboard that reported numbers of deaths are the most inconsistent of all reported data
 516 due to reasons like: the timeline for deaths occurring from COVID-19 is highly variable, and deaths occur at homes,
 517 hospitals, long term care facilities for which the reporting mechanism is perhaps not as streamlined. Hence, we
 518 applied the percentages of deaths of those hospitalized in various age groups in the month of November 2020 to all
 519 the subsequent months of our simulation study (till end of July 2021). As expected, CDC variant strategy produced
 520 statistically significant lower numbers of hospitalized and deaths compared to no vaccination (p-values 0.0014 and
 521 0.0015, respectively). The differences among the three vaccination strategies, however, are not statistically
 522 significant (p-values range from 0.08 to 0.3).

523

Outcome Prioritization Strategy	Infected Cases	Reported Cases	Hospitalized	Deaths	Date when new reported cases fall below 100
No vaccination	1.71M (1.66M – 1.76M)	732K (695K – 770K)	18.7K (18.3K – 19.1K)	9K (8.8K – 9.3K)	June 12, 2021
Minor variant of CDC	1.55M (1.38M – 1.73M)	659K (567K – 752K)	17K (15.7k – 18.3k)	8K (7.2K – 8.8K)	May 17, 2021
Age stratified	1.58M (1.43M – 1.73M)	672K (589K – 754K)	17.6K (16.6k – 18.5k)	8.5K (7.9k – 8.9k)	May 22, 2021
Random	1.54M (1.32M – 1.75M)	649K (538K – 761K)	17.3K (15.9K – 18.7K)	8.4K (7.6K – 9.1K)	May 7, 2021

524

525 Table 2. Summary of expected cumulative values (with 95% confidence intervals) on July 31, 2021 obtained by the
 526 AB model for the vaccine prioritization strategies
 527

528 CONCLUDING REMARKS

529 We have developed a detailed AB simulation model for mimicking the spread of COVID-19 in an urban region
530 (Miami-Dade County, Florida) of the of the U.S. The model is calibrated using transmission coefficients and daily
531 schedules of the people and validated using the data reported in the Florida COVID-19 dashboard till December 30,
532 2020 (see Figure 5). On this validated model we have incorporated the vaccination process that started in the U.S. on
533 December 15, 2020 using two different vaccines developed by Pfizer/BioNTech and Moderna with an estimated
534 2.54 million doses for Miami-Dade county to inoculate 1.27 million people on a 2 dose regimen, based on
535 government contracts at the time of study.

536
537 Model results indicate that the use of the available vaccines can reduce the spread of the virus and help the pandemic
538 to subside below a small threshold of daily new cases by mid-May 2021, approximately a month sooner than if no
539 vaccines were available. Also, the vaccination is expected to reduce number of infections by approximately 10%
540 compared to no vaccination, which translates to sparing 5.6% of the total population from being infected.

541 We note that, even though the vaccines were developed and approved for human use at a much faster rate than ever
542 accomplished before, the accelerated growth of the infections, especially with the onset of the winter in the northern
543 hemisphere, reduced the opportunities for benefits that the vaccines could have delivered. For example, by end of
544 January 2021 a large proportion (over 41%) of the Miami-Dade population is expected to be infected, significantly
545 reducing the pool of susceptible for vaccines to work on.

546
547 Another noteworthy finding of this study was that there was no statistical difference in number of reported cases
548 between vaccination prioritization strategies tested: CDC recommendation based strategy, strictly age-based
549 strategy, and random strategy. This information can help give more latitude for decision makers in COVID-19
550 vaccine distribution, as this research suggests that adhering strictly to priority groups may not be as paramount to
551 vaccination campaign success as simply distributing the vaccines.

552
553 Though our AB model is well suited to study future progression of COVID-19, it has some limitations. As
554 mentioned under vaccination strategies, our model did not include health conditions that are relevant to COVID-19
555 (like pulmonary disease, obesity, heart problems) as attributes for people. Hence, we were not able to implement one

556 element of the CDC recommended prioritization strategy that includes people aged 16-64 years with underlying
557 medical conditions in priority 3. Also, we did not consider any vaccine wastage due to complexities associated with
558 refrigeration, distribution, and human error. We also assumed that vaccination of all priority groups will occur
559 uniformly over the eligibility periods considered, which may not reflect the reality. Also, since, to our knowledge,
560 there is little available literature on the rate of immunity growth each day from the two dose vaccines, we assumed a
561 linear growth starting with the first dose and culminating (full immunity) seven days after the second dose. Lastly,
562 as the pandemic progresses, new strains of the virus are being identified with slightly different viral parameters that
563 may not receive full coverage from the vaccine. It is unclear how this will impact the pandemic projection presented
564 in this model, though latest research shows that those vaccinated are likely to be protected from the new strains.

565
566 Unlike highly aggregated compartmental models that are relatively easy to apply to multiple regions/countries,
567 agent-based models are highly granular and require extensive data collection for the application region. The data
568 include population in all age groups, household compositions of adults and children, essential and non-essential
569 businesses and factories of different sizes as places for employment, schools and colleges of different sizes for
570 different age groups, peoples schedule on weekdays and weekends during different social intervention phases,
571 intervention timelines, testing availability and reporting delays, quarantine, isolation, and mask usage compliance,
572 and level of contact tracing. Hence, implementing the AB model to another region is a major task (see [19] for a
573 step-by-step approach).

574
575 As vaccination is ramping up in earnest in the U.S. at the time of our study, we believe that our results will provide
576 useful information for the healthcare policy makers not only for Miami-Dade County but for similar urban regions in
577 the U.S. and perhaps elsewhere in the world with a similar demography.

578
579 **BIBLIOGRAPHY**

- 580 1. Aleta A, Martin-Corral D, Piontti A, AJelli M, Litvinova M, Chinazzi M. Modeling the impact of social
581 distancing, testing, contact tracing and household quarantine on second-wave scenarios of the COVID-19
582 epidemic. Medrxiv. 2020 May 18;
- 583 2. Barmparis G, Tsironis G. Estimating the infection horizon of COVID-19 in eight countries with a data-driven
584 approach. 135. 2020 May;109842.

- 585 3. Beusokem M. Survey: COVID vaccine willingness waned since April. Center for Infectious Disease Research
586 and Policy [Internet]. 2020 Dec 30 [cited 2021 Jan 28]; Available from: [https://www.cidrap.umn.edu/news-](https://www.cidrap.umn.edu/news-perspective/2020/12/survey-covid-vaccine-willingness-waned-april)
587 [perspective/2020/12/survey-covid-vaccine-willingness-waned-april](https://www.cidrap.umn.edu/news-perspective/2020/12/survey-covid-vaccine-willingness-waned-april)
- 588 4. Buckner J, Chowell G, Springborn M. Optimal Dynamic Prioritization of Scarce COVID-19 Vaccines.
589 Medrxiv. 2020 Sep;
- 590 5. Candido D, Claro I, Jesus J, Marciel de Souza W, Moreira F, Dellicour S. Evolution and epidemic spread of
591 SARS-CoV-2 in Brazil. *Science*. 2020 Sep 4;369(6508):1255–60.
- 592 6. Chao D, Halloran E, Obenchain V, Longini I. FluTE, a publicly available stochastic influenza epidemic
593 simulation model. *PLoS Comput Biol*. 2010 Jan 29;6(1):e1000656.
- 594 7. Chintalapudi N, Battineni G, Amentaa F. COVID-19 virus outbreak forecasting of registered and recovered
595 cases after sixty day lockdown in Italy: A data driven model approach. *J Microbiol Immunol Infect*. 2020
596 Jun;53(3):396–403.
- 597 8. Clements K, Chancellor J, Kristin N, DeLong K, Thompson D. Cost-Effectiveness of a Recommendation of
598 Universal Mass Vaccination for Seasonal Influenza in the United States. *Value in Health*. 2011
599 Sep;14(6):800–11.
- 600 9. Fang Y, Nie Y, Penny M. Transmission dynamics of the COVID-19 outbreak and effectiveness of
601 government interventions: A data-driven analysis. *J Med Virol*. 92(6):645–59.
- 602 10. Ferguson N, Cummings D, Fraser C, Cajka J, Cooley P, Burke D. Estimating disease burden of a potential
603 A(H7N9) pandemic influenza outbreak in the United States. *Nature*. 2006 Apr 26;442(7101):448–52.
- 604 11. Hou C, Chen J, Zhou Y, Hua L, Yuan J, He S. The effectiveness of quarantine of Wuhan city against the
605 Corona Virus Disease 2019 (COVID-19): A well-mixed SEIR model analysis. *J Med Virol*. 2020
606 Jul;92(7):841–8.
- 607 12. Jordan A, Almkhatar S, Aufrechtig A, Barnard A, Bloch M, Cahalan S, et al. Coronavirus in the U.S.: Latest
608 Map and Case Count. *NYtimes.com* [Internet]. 2021 Jan 25 [cited 2021 Jan 25]; Available from:
609 <https://www.nytimes.com/interactive/2020/us/coronavirus-us-cases.html>
- 610 13. Knipl D, Röst G. Modelling the strategies for age specific vaccination scheduling during influenza pandemic
611 outbreaks. *Math Biosci Eng*. 2011 Jan;8(11):123–39.
- 612 14. Longini I, Halloran E. Strategy for Distribution of Influenza Vaccine to High-Risk Groups and Children.
613 *American Journal of Epidemiology*. 2005 Feb 15;161(4):303–6.
- 614 15. Patel R, Longini I, Halloran E. Finding optimal vaccination strategies for pandemic influenza using genetic
615 algorithms. *Journal of Theoretical Biology*. 2005 May 21;234(2):201–12.
- 616 16. Peng L, Yang W, Zhang D, Zhuge C, Hong L. Epidemic analysis of COVID-19 in China by dynamical
617 modeling. *MedRxiv*. 2020 Feb 18;
- 618 17. Roope L, Clarke P, Duch R. Who should get the coronavirus vaccine first? France and the UK have different
619 answers. *The Conversation* [Internet]. 2020 Nov 16 [cited 2021 Jan 25]; Available from:
620 [https://theconversation.com/who-should-get-the-coronavirus-vaccine-first-france-and-the-uk-have-different-](https://theconversation.com/who-should-get-the-coronavirus-vaccine-first-france-and-the-uk-have-different-answers-149875)
621 [answers-149875](https://theconversation.com/who-should-get-the-coronavirus-vaccine-first-france-and-the-uk-have-different-answers-149875)
- 622 18. Saad L. U.S. Readiness to Get COVID-19 Vaccine Steadies at 65%. *Gallup News* [Internet]. 2021 Jan 12
623 [cited 2021 Jan 28]; Available from: [https://news.gallup.com/poll/328415/readiness-covid-vaccine-](https://news.gallup.com/poll/328415/readiness-covid-vaccine-steadies.aspx)
624 [steadies.aspx](https://news.gallup.com/poll/328415/readiness-covid-vaccine-steadies.aspx)

- 625 19. Tatapudi H, Das R, Das T. Impact assessment of full and partial stay-at-home orders, face mask usage, and
626 contact tracing: An agent-based simulation study of COVID-19 for an urban region. *Global Epidemiology*.
627 2020 Nov 1;2(100036).
- 628 20. Yang S, Cao P, Du P, Wu Z, Zhang Z, Yang L. Early estimation of the case fatality rate of COVID-19 in
629 mainland China: a data-driven analysis. *Ann Transl Med*. 2020 Feb;8(4):128.
- 630 21. Yang Z, Zeng Z, Wang K, Wong S, Liang W, Zanin M. Modified SEIR and AI prediction of the epidemics
631 trend of COVID-19 in China under public health interventions. *J Thorac Dis*. 2020 Mar;12(3):165–74.
- 632 22. Zhang Y, Jiang B, Yuan J, Tao Y. The impact of social distancing and epicenter lockdown on the COVID-19
633 epidemic in mainland China: A data-driven SEIQR model study. *MedRxiv*. 2020 Mar 6;
- 634 23. Pfizer and BioNtech conclude Phase 3 study of COVID-19 vaccine candidate, meeting all primary efficacy
635 endpoints. Pfizer [Internet]. 2020 Nov 18 [cited 2021 Jan 25]; Available from:
636 [https://www.pfizer.com/news/press-release/press-release-detail/pfizer-and-biontech-conclude-phase-3-study-](https://www.pfizer.com/news/press-release/press-release-detail/pfizer-and-biontech-conclude-phase-3-study-covid-19-vaccine)
637 [covid-19-vaccine](https://www.pfizer.com/news/press-release/press-release-detail/pfizer-and-biontech-conclude-phase-3-study-covid-19-vaccine)
- 638 24. Evidence to recommendations for COVID-19 vaccines: Evidence framework. WHO [Internet]. 2020 Dec 10
639 [cited 2020 Jan 25]; Available from: [https://www.who.int/publications/i/item/WHO-2019-nCoV-SAGE-](https://www.who.int/publications/i/item/WHO-2019-nCoV-SAGE-Framework-Evidence-2020-1)
640 [Framework-Evidence-2020-1](https://www.who.int/publications/i/item/WHO-2019-nCoV-SAGE-Framework-Evidence-2020-1)
- 641 25. How CDC Is Making COVID-19 Vaccine Recommendations. CDC [Internet]. 2020 Dec 30 [cited 2021 Jan
642 25]; Available from: <https://www.cdc.gov/coronavirus/2019-ncov/vaccines/recommendations-process.html>
- 643 26. COVID-19 Vaccines. US Food & Drug Administration [Internet]. 2021 Jan 12 [cited 2021 Jan 25]; Available
644 from: [https://www.fda.gov/emergency-preparedness-and-response/coronavirus-disease-2019-covid-19/pfizer-](https://www.fda.gov/emergency-preparedness-and-response/coronavirus-disease-2019-covid-19/pfizer-biontech-covid-19-vaccine)
645 [biontech-covid-19-vaccine](https://www.fda.gov/emergency-preparedness-and-response/coronavirus-disease-2019-covid-19/pfizer-biontech-covid-19-vaccine)
- 646 27. Florida. COVID-19 Updates [Internet]. The City of Miami. [cited 2021 Jan 26]. Available from:
647 <https://www.miamigov.com/Notices/News-Media/COVID-19-Updates>
- 648 28. Florida’s COVID-19 Data and Surveillance Dashboard,. Florida Department of Health, Division of Disease
649 Control and Health Protection.
- 650 29. Framework for equitable allocation of COVID-19 vaccine [Internet]. The National Academy Press; [cited
651 2021 Jan 25]. Available from: <https://www.nap.edu/read/25917/chapter/1>
- 652