

1 **Negative SARS-CoV-2 PCR or rapid antigen test result and the**  
2 **subsequent risk of being infectious: a mathematical simulation**  
3 **study**

4 Ralf Krumkamp<sup>1,2,#</sup>, Benno Kreuels<sup>3,4,5</sup>, Veronika K. Jaeger<sup>6</sup>, Jürgen May<sup>1,2,7</sup>, Rafael  
5 Mikolajczyk<sup>8</sup>, André Karch<sup>6</sup>

6

7 <sup>1</sup> Department of Infectious Disease Epidemiology, Bernhard Nocht Institute for Tropical  
8 Medicine, 20359 Hamburg, Germany

9 <sup>2</sup> German Center for Infection Research (DZIF), Partner site Hamburg - Lübeck - Borstel -  
10 Riems

11 <sup>3</sup> Department of Tropical Medicine, Bernhard Nocht Institute for Tropical Medicine, 20359  
12 Hamburg, Germany

13 <sup>4</sup> I. Department of Medicine, University Medical Center Hamburg-Eppendorf, 20251  
14 Hamburg, Germany

15 <sup>5</sup> Department of Medicine, College of Medicine, Blantyre, Malawi

16 <sup>6</sup> Institute of Epidemiology and Social Medicine, University of Muenster, 48149 Münster,  
17 Germany

18 <sup>7</sup> Tropical Medicine II, University Medical Centre Hamburg-Eppendorf, 20151 Hamburg,  
19 Germany

20 <sup>8</sup> Institute for Medical Epidemiology, Biometrics and Informatics, Interdisciplinary Center for  
21 Health Sciences, Martin Luther University Halle-Wittenberg, 06108 Halle, Germany

22

23 #corresponding author:

24 Ralf Krumkamp

25 Bernhard Nocht Institute for Tropical Medicine

26 Bernhard Nocht Str. 74

27 20359 Hamburg / Germany

28 Phone: +49 (0)40 42818 535

NOTE: This preprint reports new research that has not been certified by peer review and should not be used to guide clinical practice.

29 Email: [krumkamp@bnitm.de](mailto:krumkamp@bnitm.de)

## 30 **Abstract**

31 Background. A considerable proportion of SARS-CoV-2 transmission occurs from  
32 asymptomatic and pre-symptomatic cases. Therefore, different polymerase chain reaction  
33 (PCR)- or rapid antigen test (RAT)-based approaches are being discussed and applied to  
34 identify infectious cases that would have gone undetected (e.g., in nursing homes). In this  
35 article, we provide a framework to estimate the time-dependent risk of being infectious after a  
36 negative SARS-CoV-2 test and we simulate the number of expected cases over time in  
37 populations of individuals who initially tested negative.

38 Methods. A Monte Carlo approach is used to simulate infections that occurred over a one-  
39 week period in populations with 1,000 individuals following a negative SARS-Cov-2 test.  
40 Parameters representing the application of PCR tests or RATs are utilized, and SARS-CoV-2  
41 7-day incidences between 25 and 200 per 100,000 people are considered. Simulation results  
42 are compared to case numbers predicted via a mathematical equation.

43 Results. The simulations showed a linear increase in cases over time in populations of  
44 individuals who initially tested SARS-CoV-2 negative. The different false negative rates of  
45 PCR tests and RATs have a strong impact on the number of simulated cases. The simulated  
46 and the mathematically predicted case numbers were comparable. However, Monte Carlo  
47 simulations highlight that, due to random effects, infectious cases can exceed predicted case  
48 numbers even shortly after a test was conducted.

49 Conclusions. The analysis demonstrates that the number of infectious cases in a population  
50 can be effectively reduced by the screening of asymptomatic individuals. However, the time  
51 since the negative test and the underlying SARS-CoV-2 incidence are critical parameters in  
52 determining the observed subsequent number of cases in tested populations.

53

54 **Key words:** SARS-CoV-2, negative diagnostic test, infectiousness, asymptomatic  
55 transmission, simulation study

## 56 **Background**

57 A considerable proportion of individuals with SARS-CoV-2 infection are free of  
58 symptoms or only show very mild symptoms. However, transmission can occur from both  
59 asymptomatic and pre-symptomatic cases [1,2]. Different PCR (polymerase chain reaction) or  
60 rapid antigen test (RAT)-based approaches are currently being considered or have already  
61 been implemented to identify cases that would have otherwise gone undetected (for example,  
62 to protect clinically vulnerable individuals in high-infection risk settings like nursing homes,  
63 to reduce unnecessary quarantine of non-infectious people, or to lift social contacts  
64 restrictions e.g. to permit care home visiting [3]).

65 For such measures to be effective, laboratory tests would ideally be done in real-time, as  
66 the test result reflects the current state of infectiousness of an individual. Since this is not  
67 always possible, especially for PCR analyses, tests done within a certain time frame are  
68 accepted. In travel restrictions, this time frame is usually 48h before travel [4]. In contrast,  
69 RAT results are available within 20–30 min. However, these tests have a lower sensitivity  
70 than PCR tests [5]. The time between sample taking and critical event (e.g., air travel) is a  
71 crucial parameter in determining the current risk of being infectious. An individual who has  
72 tested negative may be in the latent period of infection at sampling and could progress to an  
73 infectious state immediately thereafter. As time since testing increases, people with a previous  
74 negative test results will have the same risk of being infectious as the underlying population.

75 In this article, we provide a framework to estimate the time-dependent risk of being  
76 infectious after a negative PCR test or RAT, and we simulate the number of expected cases  
77 over time in populations of individuals who initially tested negative.

## 78 **Methods**

79 We simulate infections that occur over a one-week period in a group of people who are  
80 SARS-CoV-2 negative at  $t_0$ . For the simulations we assume that the population is entirely

81 susceptible with no immunity, individuals are not suspected of being SARS-CoV-2 positive,  
82 and new cases are expected to occur homogeneously over time (i.e., unclustered). The basic  
83 simulation models are set up as follows: (i) a SARS-CoV-2 negative population is  
84 established; (ii) within this group, infectious cases are determined according to the predefined  
85 7-day incidence following a binomial distribution; (iii) the time when infectiousness starts is  
86 allocated for each case; and (iv) the duration of infectiousness is allocated for each case, so  
87 that (v) the number of infectious cases within the population over time can be summarised.

88 PCR-based and RAT-based testing strategies are simulated. Parameters are taken from the  
89 literature as summarised in Table 1. Most SARS-CoV-2 cases transmit the infection within  
90 the first three days of their infectious period, and the majority of cases are non-infectious after  
91 5 to 9 days [1,6]. For the simulations, an average infectious period of 96 hours (Gaussian  
92 distribution; standard deviation [SD]: 10) is assumed. PCR tests and RATs differ in their false  
93 negative rate (FNR), which defines the proportion of positive cases receiving a negative test  
94 result. FNRs depend on the specificity of a test and the accuracy of the test implementation.  
95 Reported FNRs for SARS-CoV-2 PCR tests vary greatly [7] and 3% was used as base case  
96 value. For RATs, the World Health Organization recommends minimum performance  
97 requirements of 80% sensitivity [8], which was assumed for calculations of the FNR in the  
98 RAT scenarios. Viral loads rise quickly at the beginning of the infectious period. However, in  
99 the first 12 hours after a PCR test is able to detect an infection, high cycle threshold (ct)  
100 values are observed (i.e., low viral loads) and cases are assumed to be non-infectious during  
101 this time interval [9,10]. Hence, we determined the first 12 hours (Gaussian distribution; mean  
102 = 12, SD: 1) after a case would be PCR positive to be non-infectious. For both tests,  
103 simulations with reported 7-day incidences of 25, 50, 100 and 200 per 100,000 people were  
104 calculated. The 7-day incidences, as reported by surveillance systems, primarily capture  
105 symptomatic SARS-CoV-2 cases. However, only 35% of all SARS-CoV-2 cases are expected  
106 to be symptomatic and the remaining 65% show very mild or no symptoms [11]. To estimate

107 the actual number of infectious cases within the simulated populations, the assumed  
 108 incidences (as reported by surveillance systems) are divided by the proportion of symptomatic  
 109 cases. Since absolute case numbers in the model population will be small, the Monte Carlo  
 110 method was applied to show stochastic effects on the occurrence of cases. Simulations are  
 111 repeated 2,000 times using parameter distributions as outlined above. To summarise the  
 112 Monte Carlo results the number of infectious cases over time in the simulation runs were  
 113 tabulated.

114

115 **Table 1:** Parameters applied in the Monte Carlo simulations.

Parameter	Value	Reference
Reported SARS-CoV-2 incidences	25, 50, 100 & 200 /100,000 per 7 days	
Proportion symptomatic infections	0.35	[11]
FNR for PCR test	3%	[7]
FNR for RAT	20%	[8]
Infectious period	Mean = 96 hours (SD: 10)	[1,6]
Time between PCR positivity and infectiousness	Mean = 12 hours (SD: 1)	[9,10]
Group size	1,000	
Model runs	2,000	

Abbreviations: FNR, False negative rate; PCR, polymerase chain reaction; RAT, rapid antigen test; SD, standard deviation;

116

117 The expected number of infectious cases over time ( $C_t$ ) within a population which had a  
 118 negative test result for SARS-CoV-2 can be described mathematically. In each scenario,  $C_t$  is  
 119 based on the actual daily incidence of infectious cases per 100,000 people ( $I$ , representing the  
 120 true number of infectious cases in a population), and the rate of prevalent cases corresponds to  
 121  $I$  times the infectious period ( $ip$ , measured in days). In a population of size  $N$ , where all  
 122 individuals are SARS-CoV-2 test negative at  $t_0$ , new cases start to emerge successively. The  
 123 number of cases increases linearly over time, until first cases become non-infectious. Thus, as  
 124 soon as first cases complete their infectious periods, the number of newly emerging cases and

125 the number of cases becoming non-infectious is balanced. Thereafter, the previously negative  
126 population shows case frequencies as expected by the underlying incidence of infection.  
127 Assuming homogeneous case occurrence over time and taking the FNR of the test into  
128 consideration, the number of cases in a previously negative population at a particular day  
129 (defined in  $t$ ) after negative testing can be estimated by

$$130 \quad C_t = (I * ip * FNR + I * ip * (1 - FNR) * t / ip) * N$$

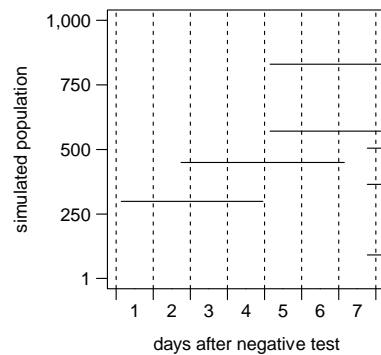
131 if  $t \leq ip$ .  $I * ip * FNR$  describes the number of cases not detected by the test, and  $I * ip * (1 -$   
132  $FNR) * t / ip$  represents the linear case-increase over time. Since the calculation is based on  
133 the incidence rate, it has to be multiplied by  $N$  to estimate the total number of cases.

134 The case numbers from the Monte Carlo simulations are compared to the mathematically  
135 predicted case numbers calculated by the equation derived above. To do this, the mean  
136 numbers of cases over time for the respective Monte Carlo scenarios is calculated.  
137 Furthermore, the equation is applied to calculate the expected case numbers over time using  
138 simulation parameters and both results are displayed using line graphs. All calculations were  
139 done in R version 4.0.3 [12].

140

## 141 **Results**

142 To visualise the occurrence of infectious cases within a previously SARS-CoV-2 negative  
143 population, a simple baseline simulation was established (Figure 1). The simulation represents  
144 a population of 1,000 individuals, assuming a reported 7-day incidence of 200 cases per  
145 100,000 people and a mean infectious period of 96 hours (SD = 10). The horizontal black  
146 lines in Figure 1 show infectious periods of cases that emerged over one week. In total, 7  
147 infectious cases appeared during the simulation. The first case occurred 3 hours after the  
148 simulation start and the highest number of cases was observed at the end of day 7, where 5  
149 individuals were infectious simultaneously.



150

151 **Figure 1:** Example of a single baseline model, showing simulated infectious periods in a population of  
152 1,000 individuals over one week.

153

154 To capture stochastic effects, the Monte Carlo method was employed and simulations were  
155 repeated 2,000 times based on the scenarios outlined above. Figure 2 summarises the results  
156 of the Monte Carlo simulations using area graphs. Graphs in the first row show simulation  
157 results of the PCR test and those in the second row of the RAT strategy. The graphs  
158 summarise simulation results based on different reported 7-day incidences over time. The  
159 proportion of simulations and the respective number of cases over time is indicated by  
160 colours.

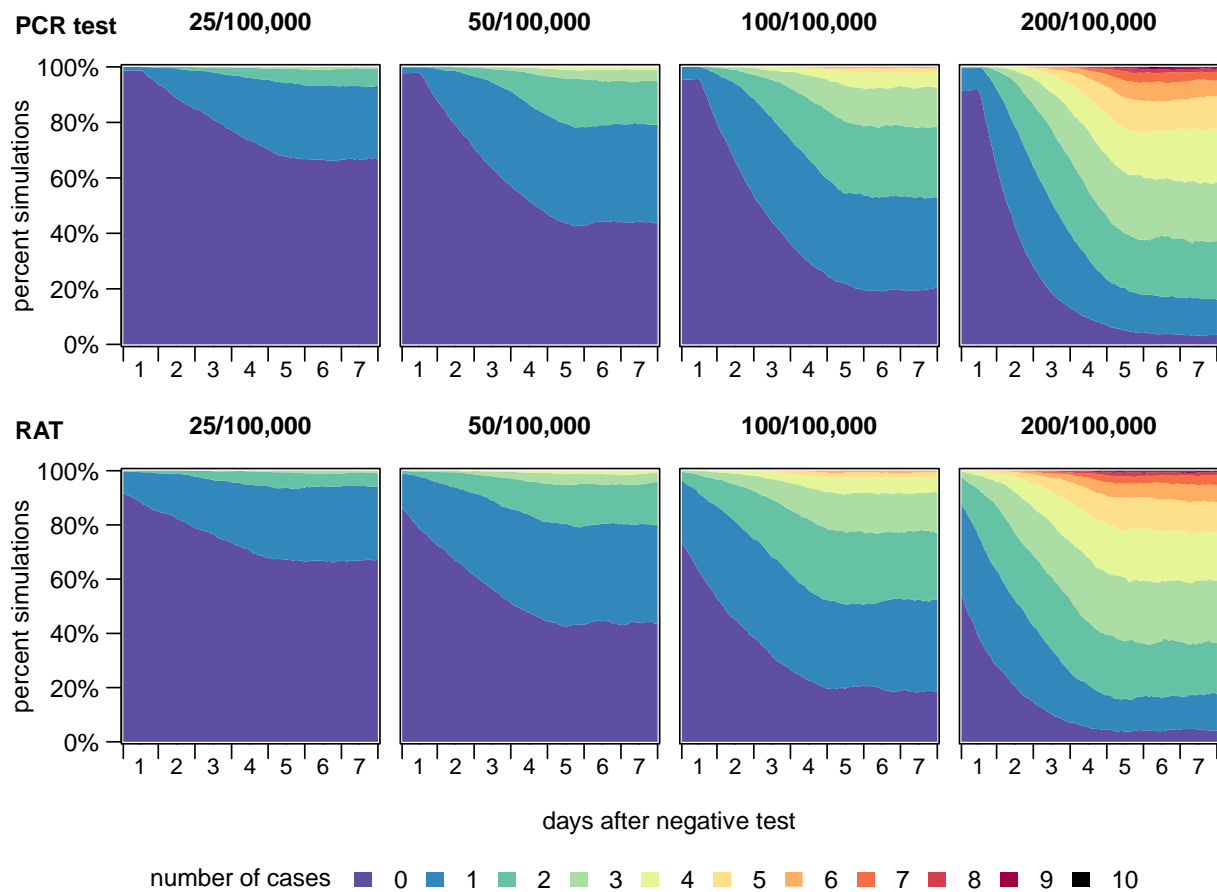
161 Due to the assumed FNR of 3% for PCR tests, infectious cases occurred as early as at the  
162 start of some simulations. No infectious cases were observed at the start in 99% of  
163 simulations when the reported 7-day incidence was 25/100,000, in 98% of simulations when  
164 incidence was 50/100,000, in 95% when incidence was 100/100,000, and in 91% when  
165 incidence was 200/100,000. After one day (24 hours), no cases occurred at the different  
166 incidence levels in 94%, 88%, 80% and 64% of simulations, and after two days (48 hours) in  
167 85%, 71%, 54% and 28% of the simulations. After 4.5 days (108 hours), the simulated case  
168 numbers started to stabilise and no further case increase was observed. Eventually, by the end  
169 of the simulation period (7 days) no infectious cases occurred in 67%, 43%, 20% and 4% of  
170 the simulations, which represents distributions in non-selected populations. Throughout time,

171 multiple infections were likely to occur in scenarios with higher incidences. At a reported 7-  
172 day incidence of 25/100,000, a prevalence of 4 simultaneous cases was never exceeded.

173 However, after 80 hours, 51 hours and 14 hours, more than 4 cases were observed in  
174 simulations based on 7-day incidences of 50, 100 and 200 cases per 100,000, respectively.

175 The FNR of the RAT was set to 20%, resulting in a lower proportion of simulations  
176 without any infectious cases at the simulation start. No infectious cases were observed at the  
177 start of the simulations in 92%, 86%, 74% and 55% of the simulations at incidence levels of  
178 25, 50, 100 and 200 per 100,000, respectively. After one day (24 hours), no cases occurred in  
179 85%, 72%, 53% and 28% of simulations, and after two days (48 hours) in 79%, 61%, 38%  
180 and 15% of the simulations, respectively. After 4 days (96 hours), the estimated number of  
181 cases started to stabilise and no infectious cases had occurred by the end of the simulation  
182 period in 67%, 44%, 19% and 4% of the simulations, which is comparable to the numbers  
183 calculated by the PCR scenarios. Similar to the PCR test, in simulations based on a reported  
184 7-day incidence of 25/100,000, no simulation showed more than 4 cases; however, at 7-day  
185 incidences of 50,100 and 200/100,000, after 48 hours, 16 hours, 1 hour, respectively more  
186 than 4 cases were observed.





187

number of cases ■ 0 ■ 1 ■ 2 ■ 3 ■ 4 ■ 5 ■ 6 ■ 7 ■ 8 ■ 9 ■ 10

188

**Figure 2:** Percentages of simulations with different case numbers calculated using Monte Carlo

189

method, considering different scenarios in a population of 1,000 individuals. Abbreviations: PCR,

190

polymerase chain reaction; RAT, rapid antigen test.

191

192

To compare case numbers simulated by Monte Carlo method and estimated by the

193

mathematical equation derived above, the mean number of cases over time per scenario was

194

calculated. The equation was applied to calculate the expected case numbers over time using

195

the respective simulation parameters. Figure 3 shows calculated case numbers from the PCR

196

test (first plot) and the RAT scenarios (second plot). The mean case numbers from the

197

simulations are shown by the black lines, and the estimated case numbers calculated with the

198

equation by the red lines. Case numbers calculated by both methods overlap. In both graphs, a

199

linear case increase over a period of 4 days (the mean infectious period) is observed, after

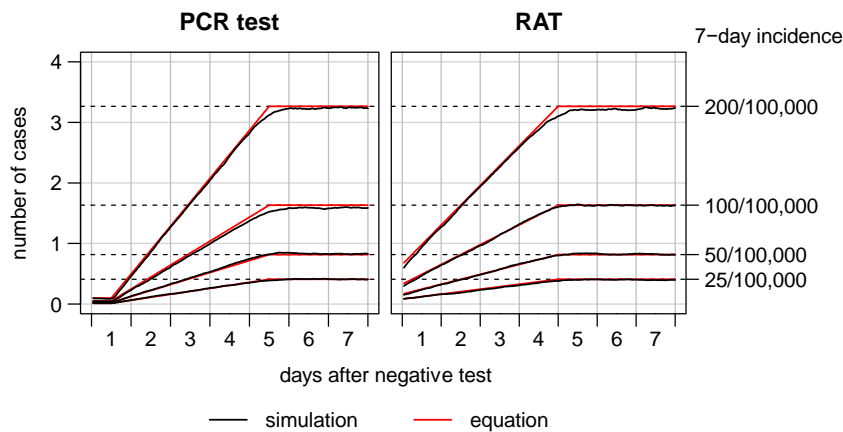
200

which the number of cases remain stable. These plateaus correspond to the expected number

201

of infectious cases in a population of 1,000 people considering the respective incidences

202 (dashed lines). Usually, PCR tests turn positive as soon as 12 hours before onset of  
203 infectiousness, which is why case numbers remain constant at the beginning of the simulation  
204 periods in the first graph.  
205



206  
207 **Figure 3:** Number of cases over time in a group of 1,000 people averaged over the Monte Carlo  
208 simulation scenarios (red lines) and estimated by the equation as derived in the method section  
209 (black lines). Abbreviations: PCR, polymerase chain reaction; RAT, rapid antigen test.

## 211 Discussion

212 SARS-CoV-2 can be transmitted from cases before they develop symptoms and some  
213 infectious cases do not develop any symptoms at all [1,2]. These infection characteristics  
214 require strategies beyond symptom-based screening in order to reduce pre- and asymptomatic  
215 transmission, responsible for a substantial number of SARS-CoV-2 cases.

216 Our analysis shows that testing asymptomatic individuals with PCR tests or RATs can  
217 reduce the number of infectious cases within populations effectively. We provide an easily  
218 applicable mathematical formula to estimate the expected case numbers over time using the  
219 disease incidence, the average infectious period and the time that has passed since a test was  
220 administered. However, the Monte Carlo simulations performed in our analysis highlight  
221 how, due to random effects, infectious cases can exceed these expected numbers even shortly

222 after all individuals in the population had tested negative. In a fraction of simulated scenarios,  
223 single infectious cases occurred right after the simulation start; in high-incidence simulations,  
224 even multiple cases occurred. These results are important for infection control because they  
225 demonstrate that, while testing can be used to effectively select populations with a low  
226 number of infectious cases, especially at high incidences, it is still likely that infectious cases  
227 will start to emerge immediately after the population had tested negative.

228 PCR tests are superior to RATs in terms of their FNR [5] and their ability to identify cases  
229 even before they are infectious [9,10]. In contrast, RATs can be applied in non-laboratory  
230 settings and the results are available within 30 minutes. For PCR tests, times between testing  
231 and reporting of results of 24 to 48 hours are reported. Hence, the higher risk of falsely  
232 diagnosing a case as negative through the use of RATs is balanced by the immediate  
233 availability of the test result. If the high FNR of RATs is to be compensated for, it is  
234 important that the test is carried out immediately before a critical event takes place. The  
235 higher FNR still bears the risk of missing infectious cases, but the immediate application  
236 reduces the number of cases which may emerge before the critical event takes place.

237 Simplifying assumptions that were made to illustrate principles of SARS-CoV-2 testing  
238 should be considered when interpreting the results. Random case occurrence was assumed;  
239 however, SARS-CoV-2 is reported to spread in clusters and via super-spreading events [13].  
240 Thus, in the case that testing is performed on a group of people where a superspreading event  
241 occurred (e.g., residents and personnel of a nursing facility with an ongoing SARS-CoV-2  
242 outbreak), the prevalence of infectious cases would be considerably higher compared to the  
243 numbers reported here. The proportion of infectious cases without or with only mild  
244 symptoms was set to 65%. However, a correct estimate of this proportion is subject to several  
245 methodological limitations that make interpretation of the reported frequencies of symptoms  
246 among SARS-CoV-2 cases difficult [14]. Additionally, we assume that the remaining 35% of  
247 cases are recognized by a health care system and they contribute to the observed incidence at

248 population level. These figures are very context-dependent and subject to current testing  
249 strategies. However, for many health care systems, lower reporting rates should be assumed.  
250 In the literature, there are conflicting reports about infectious periods in asymptomatic, mild,  
251 moderate or severe symptomatic cases as well as among different age-groups [15]. However,  
252 the infectious period is a parameter central in determining the number of cases and the  
253 temporal dependence in the occurrence of new cases.

254 SARS-CoV-2 control strategies based on diagnostics for asymptomatic individuals are  
255 suggested and designed for different purposes. A model of SARS-CoV-2 outbreaks in long-  
256 term care facilities evaluated the ability of different testing strategies to identify ongoing  
257 transmission early. The authors highlight that expanding surveillance beyond symptom-based  
258 screening could allow for earlier outbreak detection; however, testing strategies must consider  
259 available testing capacities [16]. Another study modelled the effect of surveillance testing to  
260 control SARS-CoV-2 transmission, concluding that asymptomatic individuals should be  
261 considered in testing strategies. Effective surveillance depends largely on the frequency of  
262 testing and the speed of reporting, and is only marginally improved by high test sensitivity  
263 [11]. These studies highlight the effect of testing asymptomatic individuals to control the  
264 spread of SARS-CoV-2, which is also supported by our study. With the current analysis we  
265 provide the rationale for estimating the risk of being infectious after a negative diagnostic test.

266 Our analysis highlights the temporal dynamics of SARS-CoV-2 infections after a negative  
267 test within a theoretical population. We show that PCR tests or RATs can be used to select  
268 populations with a reduced number of SARS-CoV-2 cases. However, the parameters  
269 representing time since a negative test was conducted and the underlying SARS-CoV-2  
270 incidence in a population are critical in determining the expected number of cases in test  
271 negative groups of people. Thus, especially in high-incidence scenarios, additional infection  
272 control measures are still needed to reduce transmission risk from undetected infectious cases.

273 **Acknowledgements**

274 We thank Lydia Rautman for textual revision of the manuscript.

275

276 **Potential conflicts of interest.** All authors: No reported conflicts of interest.

277 **Funding.** The authors received no specific funding for this work.

278 **Ethical approvals.** Ethics approval was not required for this mathematical simulation study.

279 **Data availability.** The R-code of this simulation study is available from the corresponding

280 author, RaK, upon request.

281

282

## 283 **References**

- 284 1. He X, Lau EHY, Wu P, Deng X, Wang J, Hao X, et al. Temporal dynamics in viral  
285 shedding and transmissibility of COVID-19. *Nat Med*. 2020;26: 672–675.  
286 doi:10.1038/s41591-020-0869-5
- 287 2. Arons MM, Hatfield KM, Reddy SC, Kimball A, James A, Jacobs JR, et al.  
288 Presymptomatic SARS-CoV-2 Infections and Transmission in a Skilled Nursing Facility.  
289 *N Engl J Med*. 2020;382: 2081–2090. doi:10.1056/NEJMoa2008457
- 290 3. Crozier A, Rajan S, Buchan I, McKee M. Put to the test: use of rapid testing technologies  
291 for covid-19. *BMJ*. 2021; n208. doi:10.1136/bmj.n208
- 292 4. Federal Foreign Office. Entry restrictions and quarantine regulations in Germany  
293 [Internet]. 2020 [cited 13 Oct 2020]. Available: [https://www.auswaertiges-](https://www.auswaertiges-amt.de/en/einreiseundaufenthalt/coronavirus#1)  
294 [amt.de/en/einreiseundaufenthalt/coronavirus#1](https://www.auswaertiges-amt.de/en/einreiseundaufenthalt/coronavirus#1)
- 295 5. Vandenberg O, Martiny D, Rochas O, van Belkum A, Kozlakidis Z. Considerations for  
296 diagnostic COVID-19 tests. *Nat Rev Microbiol*. 2021;19: 171–183. doi:10.1038/s41579-  
297 020-00461-z
- 298 6. van Kampen JJA, van de Vijver DAMC, Fraaij PLA, Haagmans BL, Lamers MM, Okba  
299 N, et al. Shedding of infectious virus in hospitalized patients with coronavirus disease-  
300 2019 (COVID-19): duration and key determinants. *medRxiv*. 2020;  
301 2020.06.08.20125310. doi:10.1101/2020.06.08.20125310
- 302 7. Arevalo-Rodriguez I, Buitrago-Garcia D, Simancas-Racines D, Zambrano-Achig P, del  
303 Campo R, Ciapponi A, et al. FALSE-NEGATIVE RESULTS OF INITIAL RT-PCR  
304 ASSAYS FOR COVID-19: A SYSTEMATIC REVIEW. *medRxiv*. 2020;  
305 2020.04.16.20066787. doi:10.1101/2020.04.16.20066787
- 306 8. World Health Organization (WHO). Antigen-detection in the diagnosis of SARS-CoV-2  
307 infection using rapid immunoassays [Internet]. Geneva; 2020. Available:  
308 <https://www.who.int/publications/i/item/antigen-detection-in-the-diagnosis-of-sars-cov->

- 309 2infection-using-rapid-immunoassays
- 310 9. Bullard J, Dust K, Funk D, Strong JE, Alexander D, Garnett L, et al. Predicting Infectious  
311 Severe Acute Respiratory Syndrome Coronavirus 2 From Diagnostic Samples. *Clin*  
312 *Infect Dis.* 2020;71: 2663–2666. doi:10.1093/cid/ciaa638
- 313 10. La Scola B, Le Bideau M, Andreani J, Hoang VT, Grimaldier C, Colson P, et al. Viral  
314 RNA load as determined by cell culture as a management tool for discharge of SARS-  
315 CoV-2 patients from infectious disease wards. *Eur J Clin Microbiol Infect Dis.* 2020;39:  
316 1059–1061. doi:10.1007/s10096-020-03913-9
- 317 11. Larremore DB, Wilder B, Lester E, Shehata S, Burke JM, Hay JA, et al. Test sensitivity  
318 is secondary to frequency and turnaround time for COVID-19 surveillance. *medRxiv*  
319 *Prepr Serv Heal Sci.* 2020; doi:10.1101/2020.06.22.20136309
- 320 12. R Core Team. *R: A Language and Environment for Statistical Computing.* Vienna,  
321 Austria: R Foundation for Statistical Computing; 2020.
- 322 13. Adam DC, Wu P, Wong JY, Lau EHY, Tsang TK, Cauchemez S, et al. Clustering and  
323 superspreading potential of SARS-CoV-2 infections in Hong Kong. *Nat Med.* 2020;26:  
324 1714–1719. doi:10.1038/s41591-020-1092-0
- 325 14. Meyerowitz EA, Richterman A, Bogoch II, Low N, Cevik M. Towards an accurate and  
326 systematic characterisation of persistently asymptomatic infection with SARS-CoV-2.  
327 *Lancet Infect Dis.* 2020; doi:10.1016/S1473-3099(20)30837-9
- 328 15. Byrne AW, McEvoy D, Collins AB, Hunt K, Casey M, Barber A, et al. Inferred duration  
329 of infectious period of SARS-CoV-2: rapid scoping review and analysis of available  
330 evidence for asymptomatic and symptomatic COVID-19 cases. *BMJ Open.* 2020;10:  
331 e039856. doi:10.1136/bmjopen-2020-039856
- 332 16. Smith DRM, Duval A, Pouwels KB, Guillemot D, Fernandes J, Huynh B-T, et al.  
333 Optimizing COVID-19 surveillance in long-term care facilities: a modelling study. *BMC*  
334 *Med.* 2020;18: 386. doi:10.1186/s12916-020-01866-6