

1 **Clinical presentation, disease course and outcome of COVID-19 in**
2 **hospitalized patients with and without pre-existing cardiac disease – a cohort**
3 **study across sixteen countries**

4

5 **Authors:**

6 CAPACITY-COVID collaborative consortium and LEOSS Study Group*

7 *Authors listed at the end of the manuscript

8

9

10

11

12

13

14

15

16

17

18

19

20

21

22

23

24

25

26

27 **Corresponding author**

28 Prof. Dr. Folkert W. Asselbergs

29 E-mail: f.w.asselbergs@umcutrecht.nl

30 Department of Cardiology, Division Heart & Lungs | University Medical Center Utrecht

31 Room E03.511 | P.O. Box 8550 | 3508 GA Utrecht, The Netherlands |

32 **NOTE: This preprint reports new research that has not been certified by peer review and should not be used to guide clinical practice.**

T +31 88755555 | F +31 88755542

1 **Abstract**

2 *Aims* Patients with cardiac disease are considered high risk for poor outcomes following hospitalization with
3 COVID-19. The primary aim of this study was to evaluate heterogeneity in associations between various heart
4 disease subtypes and in-hospital mortality.

5
6 *Method and results* We used data from the CAPACITY-COVID registry and LEOSS study. Multivariable
7 modified Poisson regression models were fitted to assess the association between different types of pre-existent
8 heart disease and in-hospital mortality. 10,481 patients with COVID-19 were included (22.4% aged 66 – 75 years;
9 38.7% female) of which 30.5% had a history of cardiac disease. Patients with heart disease were older,
10 predominantly male and more likely to have other comorbid conditions when compared to those without. COVID-
11 19 symptoms at presentation did not differ between these groups. Mortality was higher in patients with cardiac
12 disease (30.3%; n=968 versus 15.7%; n=1143). However, following multivariable adjustment this difference was
13 not significant (adjusted risk ratio (aRR) 1.06 [95% CI 0.98 – 1.15, p-value 0.13]). Associations with in-hospital
14 mortality by heart disease subtypes differed considerably, with the strongest association for NYHA III/IV heart
15 failure (aRR 1.43 [95% CI 1.22 – 1.68, p-value <0.001]) and atrial fibrillation (aRR 1.14 [95% CI 1.04 – 1.24, p-
16 value 0.01]). None of the other heart disease subtypes, including ischemic heart disease, remained significant after
17 multivariable adjustment.

18
19 *Conclusion* There is considerable heterogeneity in the strength of association between heart disease subtypes and
20 in-hospital mortality. Of all patients with heart disease, those with severe heart failure are at greatest risk of death
21 when hospitalized with COVID-19.

22

23 **Key words**

24 COVID-19; SARS-CoV-2; epidemiology; patient registry; comorbidity; cardiovascular disease

25

26

27

28

29

30

1 Introduction

2 Coronavirus disease 2019 (COVID-19) has rapidly spread across the globe since December 2019, leading to more
3 than 115 million confirmed cases and 2.5 million fatalities as of the 4th of March 2021.¹ Although the disease is
4 not as lethal (case fatality ratio (CFR) ~0.3 – 1%)^{2,3} as the Middle-East respiratory syndrome (MERS; CFR ~35%)⁴
5 and the severe acute respiratory syndrome (SARS; CFR 14 – 15%)⁵, it has become clear that morbidity and
6 mortality is much higher than pandemic influenza (CFR 0.1%)^{6,7}, especially among the elderly³.

7 Studies show that a significant number of patients who develop severe symptoms of COVID-19 have
8 underlying comorbidities, of which cardiovascular disease (CVD) is reported in 10 – 30% of inpatients in
9 Western-European and American cohorts.⁸⁻¹¹ Patients with pre-existing cardiac disease have consistently been
10 reported to be at increased risk of an unfavorable outcome both among the general population and those requiring
11 hospitalization when compared to patient without these conditions.^{8,12} In one of the largest cohort studies of
12 hospitalized patients thus far (n=20,133), chronic cardiac disease was significantly associated with mortality
13 (adjusted HR 1.16; 95% confidence interval (CI) 1.08 – 1.24).⁸ Another study by Fried et al. (n=11,721) across
14 38 states in the United States, found an adjusted odds ratio (aOR) of 1.22 (95% CI 1.06 – 1.41) and 1.44 (95% CI
15 1.27 – 1.63) for mechanical ventilation and death respectively related to cardiac disease.¹¹ The Chinese Center for
16 Disease Control report a CFR five times higher among those with CVD compared to patients without any
17 comorbidities.¹³ These observations are in line with previous studies among patients with influenza and other
18 respiratory tract infections.¹⁴⁻¹⁵

19 Previous studies have predominantly evaluated the association between having any chronic cardiac
20 disease and COVID-19 related mortality, where all cardiac disease subtypes are analyzed together.^{8,11,12} However,
21 from a clinical point of view, it is likely that not all cardiac diseases mediate a similar risk. Increasing our
22 understanding of the clinical course of COVID-19 in patients across different heart disease subtypes is of pivotal
23 importance. Firstly, it can provide guidance for health care professionals in the management of these patients and
24 would better inform shielding guidelines. Secondly, it can bring some clarity for patients, concerned about how
25 their own cardiac disease influences their risk from COVID-19.¹⁶ Reducing these concerns might also have a
26 positive impact on health care seeking behavior during the pandemic, diminishing the detrimental collateral
27 damage the outbreak has provoked in patients with heart disease who are afraid of attending hospitals.¹⁷

28 The aim of the current study was to investigate whether there is heterogeneity in the strength of
29 association per heart disease subtype and in-hospital mortality. Furthermore, we describe the disease trajectory of

1 COVID-19 in hospitalized patients with- and without pre-existing cardiac disease, from documentation at hospital
2 admission to discharge or death, including the prevalence of cardiac complications.

3

4 **Methods**

5

6 *Study design and setting*

7 For this study we used data collected in the CAPACITY-COVID registry (www.capacity-covid.eu) and the Lean
8 Open Survey on SARS-CoV-2 infected patients (LEOSS) study (www.LEOSS.net).

9 CAPACITY-COVID is a multinational patient registry specifically established to determine the role of
10 CVD in the COVID-19 pandemic (NCT04325412).¹⁸ All adult patients (≥ 18 years) hospitalized with confirmed
11 or highly suspected COVID-19 are eligible for inclusion in the registry. The extent and scope of inclusion varies
12 per site, depending on local resources and preference. A majority of participating centers ($n=54$) use a non-
13 selective inclusion, i.e., every adult patient with (highly suspected) COVID-19 or a random sample is included in
14 the registry, and 18 centers applied a selective inclusion of only patients for whom a cardiologist has been
15 consulted, only patients with a history of CVD or cardiovascular risk factors or a selection based on department
16 of admission i.e., only patients admitted to the ward or intensive care unit (ICU). Since the launch of the registry
17 in March 2020, 72 centers across 13 countries have joined the consortium.

18 Within CAPACITY-COVID, the ISARIC core case report form¹⁹ has been used as the core data set
19 which was extended with ~400 additional variables to capture in-depth information regarding cardiovascular
20 history, the use of cardiovascular medications, cardiac investigations such as ECG and echocardiography and
21 cardiovascular outcomes. The data dictionary is available online (www.capacity-covid.eu). Only data generated
22 during routine clinical care is collected and patients do not undergo any additional investigations for the purpose
23 of this registry. Data is collected in a REDCap database after pseudonymization which is managed by the
24 University Medical Center Utrecht, Utrecht, the Netherlands.

25 LEOSS is a European multicenter cohort study established in March 2020, collecting information on
26 both hospitalized and ambulant patients with laboratory confirmed COVID-19. A detailed description of the study
27 design has been previously reported.²⁰ In short, patients of all ages can be included in LEOSS. Case collection is
28 anonymized, realized by amongst other the absence of any variables containing directly identifying information
29 in the case report form, only a small subset of variables associated with a high risk of re-identification and the
30 categorized collection of continuous variables (such as age).²¹ Currently centers from Belgium, France, Germany,

1 Latvia, Italy, Spain, Switzerland and Turkey contribute data to the registry. The data collection is coordinated by
2 the University Hospital of Cologne in Germany.

3

4 *Study population*

5 We excluded patients only treated in an ambulatory setting, children (age <18 years) and patients for which the
6 region of inclusion, COVID-19 status, admission date, history of cardiac disease, age, sex or outcome were
7 unconfirmed. All hospitalized patients aged ≥ 18 years with a laboratory confirmed SARS-CoV-2 infection
8 registered between March and November 2020 were included. A list of all participating sites that contributed with
9 data to the current study is provided in **Table S1**. The informed consent procedure varied per study site, following
10 local and national rules and regulations during the pandemic. Within CAPACITY-COVID, a majority of
11 participating sites handled an opt-out approach, where patients received written information during or after
12 hospital admission. For sites in the UK, informed consent was not required under emergency legislation during
13 the pandemic. Inclusion into LEOSS did not require informed consent due to anonymous case collection. Medical
14 ethics approval was obtained nationally or independently for each participating site complying with the
15 Declaration of Helsinki.

16

17 *Statistical analysis*

18 Continuous variables in CAPACITY-COVID were categorized to align with LEOSS prior to merging the datasets
19 from these two different sources. Multiple imputation (R package *mice*) was performed to deal with missingness
20 across baseline variables required for the regression models through the generation of 10 imputed datasets. The
21 following variables were included in the multiple imputation model: all variables indicated with an asterisk in
22 **Table 1-3**, and furthermore presence of pre-existing cardiac disease, arrhythmia/conduction disorder, heart
23 failure, coronary artery disease (CAD), valvular heart disease, extent of inclusion (all/random sample vs. selected
24 inclusion as described above), cohort (CAPACITY-COVID vs. LEOSS) and region of inclusion (United
25 Kingdom, Netherlands/Belgium, Germany/Switzerland, Middle - East and Southern-Europe). Baseline variables
26 with >40% missingness were excluded from further analysis.

27 For the main analyses, multivariable modified Poisson models with robust standard errors were used to
28 estimate the association between a history of cardiac disease and in-hospital mortality across the pooled ten
29 imputed datasets. Heterogeneity in associations was also determined across various clinically relevant subgroups
30 including age (≤ 65 and > 65), sex, body mass index (BMI) (< 30 and ≥ 30), diabetes, hypertension, chronic kidney

1 disease (CKD) and chronic obstructive pulmonary disease (COPD). In the secondary analyses, associations
2 between pre-defined specific types of heart disease and the in-hospital mortality were determined. The following
3 heart disease subtypes were analyzed: arrhythmias/conduction disorders, CAD, myocardial infarction (MI), heart
4 failure and valvular heart disease. To be able to determine differences in the association between the pre-defined
5 cardiac disease subtypes and in-hospital mortality in adults versus the elderly, analyses were also performed in
6 patients ≤ 65 years and >65 years. The cut-off was set at 65 since most COVID-19 vaccination strategies in Europe
7 have defined the elderly as those >65 years of age.²²

8 All analyses were adjusted for the following covariates: age, sex, BMI, diabetes, hypertension, CKD,
9 COPD and geographic region of inclusion (see above). For the sensitivity analyses we excluded patients included
10 by centers handling a selective inclusion strategy as previously outlined. In addition, we assessed the direction
11 and magnitude of the associations based on registry of inclusion (CAPACITY vs. LEOSS), next to fitting models
12 in the dataset of the combined cohorts.

13 Logistic regression on the non-imputed dataset was used to identify association of the most prevalent
14 COVID-19 symptoms at presentation and eight different age categories in the total cohort and after stratification
15 on pre-existent cardiac disease. Due to low numbers of young patients with a history of cardiac disease, the four
16 lowest age categories were merged in the stratified analyses (18 – 55 years).

17 Results of the modified Poisson regression models are reported as risk ratios (RR) with 95% confidence
18 intervals (CI) and the logistic regression models as odds ratios (ORs) with 95% CI's. Statistical significance was
19 set at an alpha of 5% and all hypothesis tests were two-sided. Continuous variables were summarized as means
20 (SD) or medians [IQR] and categorical variables as counts (%). All analyses were performed in R Studio (version
21 1.3.959, Vienna, Austria).

22

23 **Results**

24

25 *Baseline characteristics*

26 In total, 13,176 patients had been included in CAPACITY-COVID or LEOSS between March and of November
27 2020. After applying exclusion criteria, 10,481 patients from sixteen countries were retained for the final analysis
28 (**Figure S1**). Baseline characteristics stratified by the presence of pre-existing cardiac disease and age are
29 summarized in **Table 1**.

1 The majority of patients were aged between 66 – 75 (n=2,346; 22.4%), and more than half the cohort
2 was composed of individuals >65 years (n=5,466; 52.2%). Most patients were white (n=7,606; 83.1%),
3 predominantly male (n=6,430; 61.3%), and 45.3% (n=4,748) had a BMI >25 kg/m². At baseline, almost one third
4 of patients (n=3,195; 30.5%) had pre-existing heart disease of which CAD (n=1589; 15.2%) and cardiac
5 arrhythmias/conduction disorders (n=1,557; 14.9%) were most common (**Table S2**). In total, 762 patients (7.4%)
6 had been previously diagnosed with heart failure. Other frequent major comorbidities were diabetes (n=2,482;
7 24.0%) and CKD (n=1,274; 12.3%).

8 Compared to patients without a history of cardiac disease, patients with pre-existing heart disease were
9 generally older, more often male (65.9% vs. 59.4%) and had a higher burden of cardiovascular risk factors and
10 other comorbid conditions at baseline (**Table 1**). Detailed phenotyping of underlying pre-existing cardiac diseases
11 of patients registered in CAPACITY-COVID, including arrhythmias, conduction disorders, type of ischemic- and
12 valvular heart disease are outlined in **Table S3**. To evaluate heterogeneity across datasets, baseline characteristics
13 were also stratified by the cohort of origin (CAPACITY-COVID vs. LEOSS; **Table S2**). Patients in LEOSS
14 tended to be younger with an overall lower prevalence of heart disease.

15

16 *Complaints at admission*

17 The median duration from the onset of symptoms to hospital admission was 6 days [IQR 2 – 9]. Fever, cough and
18 shortness of breath were the most common symptoms at presentation reported in 60.3%, 56.4% and 52.6% of
19 patients respectively (**Table 2**). The odds of having these symptoms varied across age, with fever, cough and
20 dyspnea being reported less frequently in the younger (<45 years) and older (>65 years) age groups (**Figure S2**).
21 The probability of experiencing a sore throat, anosmia and chest pain declined with age, while fatigue was reported
22 more often with increasing age. Heterogeneity in complaints and vital signs at admission was also assessed by
23 stratification by cohort of inclusion (CAPACITY-COVID vs. LEOSS; **Table S4**). Of symptoms overlapping with
24 CVD, chest pain was most common, reported by 8.3% of patients. Less than five percent of patients experienced
25 (pre) syncope, palpitations, orthopnea or peripheral edema (**Table S4**). After stratification by age, the pattern of
26 complaints did not differ between patients with and without a history of cardiac disease (**Figure S3**).

27

28 *Outcomes*

29 The median duration of hospital admission was 9 [5 – 19] days (**Table 3**). More than one in four patients were
30 admitted to a critical care unit (n=2655; 25.3%) with a median length of stay of 13 [6 – 24] days. The proportion

1 of patients admitted to a critical care unit increased with age until 75 years. Patients aged >75 years were
2 predominantly treated on the ward (**Table S5**). Overall, the comorbidity burden among patients on a critical care
3 unit was lower than for patients admitted to the ward only (**Table S5**). Patients that were admitted to a critical
4 care unit tended to be more ill at admission based on vitals and laboratory values at hospital admission (**Table**
5 **S6**). During their hospital admission 20.1% (n=2111) of patients died. Mortality was strongly related to age, with
6 a mortality of 2% (n=3) in patients aged 18-25 years and 41.6% (n=363) in patients aged >85 years (**Table S7**).
7 Oxygen saturation levels were lower at admission in those who died, while the levels of inflammatory markers
8 (C-reactive protein and total white blood cell count) were higher (**Table S8**). In patients with cardiac disease
9 30.3% (n=968) died during their hospital admission versus 15.7% (n=1143) in patients without chronic heart
10 disease (**Table 3**). In addition to heart disease, other comorbidities were also more prevalent in patients that died
11 during their hospital admission (**Table S7**).

12

13 *Cardiac and thromboembolic complications*

14 During hospitalization, serious cardiac complications including myocarditis, MI and new onset heart failure were
15 diagnosed in 0.3% (n=28), 0.6% (n=60) and 1.2% (n=115) of patients respectively (**Table 3**). Other serious cardiac
16 complications registered only in CAPACITY-COVID, including malignant ventricular arrhythmias, endocarditis
17 and pericarditis were also uncommonly diagnosed (<1% of patients; **Table S9**). MI and new onset heart failure
18 was diagnosed more frequently in patients with pre-existing cardiac disease compared to those without (**Table 3**).
19 Among thromboembolic complications, pulmonary embolism was most prevalent being diagnosed in 4.2%
20 (n=420) of patients (**Table 3**). All complications occurred more often in patients admitted to a critical care unit
21 and patients that died in-hospital (**Table S10, S11**), with the difference being most pronounced for pulmonary
22 embolism, which was diagnosed >10 times as often in the critically ill. Venous thromboembolic complications
23 were diagnosed less frequently among patients with a history of heart disease (**Table 3**).

24

25 *Association between prior history of cardiac disease and in-hospital mortality*

26 The multivariable modified Poisson regression model fitted in the total population yielded a non-statistically
27 significant association between any pre-existing cardiac disease and in-hospital mortality (aRR 1.06 [95% CI 0.98
28 1.15, p-value 0.13])(**Figure 1**). This association was further explored across different clinically relevant subgroups
29 (**Table S12**). Apart from age (p-value interaction 0.03), the subgroup analyses did not reveal any significant

1 interactions with prior heart disease. Furthermore, sensitivity analyses by the exclusion of patients included from
2 centers that handled a selective inclusion (n=759) did not yield any different results (**Table S13**).

3

4 *Association between different pre-existing cardiac comorbidities and in-hospital mortality*

5 To assess heterogeneity in the associations between different types of heart disease and hospital mortality,
6 modified Poisson regression models were fitted for all pre-specified cardiac disease subgroups. After
7 multivariable adjustment, the strongest association was found for NYHA III/IV heart failure and in-hospital
8 mortality (aRR 1.43 [95% CI 1.22 – 1.68, p-value <0.001](**Figure 1**). Also, atrial fibrillation was found to be
9 significantly associated with in-hospital mortality (aRR 1.14 [95% CI 1.04 – 1.24], p-value 0.01). For the other
10 heart disease subtypes, including ischaemic heart disease, no significant associations were found (**Figure 1, Table**
11 **S14**).

12 Since the elderly (>65 years) and adults with comorbidities are defined as two of the main risk groups being
13 prioritized in ongoing vaccination campaigns and statistical interaction was established between pre-existing
14 cardiac disease and age, associations between the various heart disease subtypes and in-hospital mortality were
15 also determined in patients ≤65 years and >65 years (**Figure 2**). For myocardial infarction and NYHA III/IV the
16 interaction with age was significant (p-value 0.02). The difference was most pronounced for the association
17 between NYHA III/IV and in-hospital mortality with an aRR of 2.67 ([95% CI 1.30 – 5.50] p-value 0.01) in
18 patients aged ≤65 years vs.1.42 ([95% CI 1.21 – 1.66] p-value <0.001) in patients aged >65 years.

19

20 **Discussion**

21 A large proportion of patients developing severe COVID-19 have underlying CVD. The aim of this study was to
22 describe and compare the disease course and outcomes in hospitalized COVID-19 patients with and without pre-
23 existing cardiac disease. The most important findings of this work are (i) the symptoms of COVID-19 at
24 presentation are age dependent and do not differ in individuals with and without prior cardiac disease (ii) serious
25 incident cardiac complications are diagnosed infrequently during hospitalization and are seen more often in
26 patients with known cardiac disease at baseline (iii) the association between prior heart disease and in-hospital
27 mortality varies across heart disease subtypes where (iv) severe heart failure (NYHA III/IV) associates most
28 strongly with in-hospital mortality followed by (v) atrial fibrillation and (vi) there was no association with
29 ischemic heart disease.

1 In line with others²³, we found that COVID-19 symptoms at admission vary mainly with age with no
2 evidence that prior cardiac disease influences this relationship or the symptoms. Typical symptoms of COVID-
3 19 including fever, cough and shortness of breath, were reported less often in the elderly. Overall complaints
4 mimicking cardiac disease, such as chest pain, palpitations and orthopnea were reported by only a minority of
5 patients (<10%). In this regard, it is interesting that cardiac-like symptoms such as chest pain and palpitations
6 have been reported by 17-44% and 20-32% of patients in the 2-3 months after the active infection as part of the
7 so-called “long COVID” syndrome.²⁴⁻²⁷ Whether these complaints are related to cardiovascular involvement in
8 the convalescent phase of the disease or should predominantly be viewed as an epiphenomenon remains unclear.

9 According to our study, serious cardiac complications are rarely diagnosed during hospitalization with
10 COVID-19, with a prevalence <2% of patients. To aid interpretation of these numbers it is of interest to relate
11 them to the occurrence of cardiac complications in patients hospitalized for other (viral) infectious diseases. A
12 recent large French retrospective cohort study found that the prevalence of MI and atrial fibrillation was lower in
13 patients with COVID-19 than seasonal influenza with a prevalence of 0.6% vs. 1.1% and 12.4% vs. 15.8%
14 respectively.⁷ Unfortunately, this study did not report the prevalence of any other cardiac complications, including
15 heart failure and myocarditis. As cardiomyocytes express ACE2^{28,29}, the docking receptor of SARS-CoV-2, it has
16 been speculated that SARS-CoV-2 may infect cardiomyocytes, replicate in cardiac tissue and thereby induce
17 direct myocardial damage. These concerns have also been triggered by the finding that raised levels of troponin
18 above test-specific upper limits are found in up to one third of patients at hospital admission.^{30,31} Histopathological
19 studies of myocardial tissue in the setting of COVID-19 have been scarce up to this point. A literature review
20 evaluating findings of 22 studies across 277 post-mortem examinations, found evidence for myocarditis in <2%.³²
21 This finding contrasts the results of a number of cardiac magnetic resonance (CMR) studies evaluating tissue
22 characteristics and function 2 – 3 months after an established SARS-CoV-2 infection.^{27,33-35} In the largest study
23 by Kotecha et al. among 148 patients that had a troponin elevation during hospitalization, non-ischemic
24 myocarditis-like late gadolinium enhancement was found in 26% of patients with one-third showing signs of
25 active myocarditis.³⁴ These findings were not associated with left ventricular dysfunction. In CMR studies
26 conducted predominantly among clinically recovered mildly symptomatic or asymptomatic cases, up to 60% were
27 described to have raised native T2 times, and which the authors suggested might be due to ongoing myocardial
28 inflammation.^{27,35} Whether these CMR findings are unique to patients that have been infected with SARS-CoV-
29 2, or also are seen in other (viral) infectious diseases has been poorly investigated. Evidence of a clear causal
30 relationship between SARS-CoV-2 and myocarditis thereby still remains elusive. It can be speculated that most

1 patients may have troponin elevations secondary to profound hypoxia and a supply/demand imbalance rather than
2 direct damage due to viral invasion in cardiac tissue.³¹ However, the discrepancy in the limited number of patients
3 diagnosed with cardiac complications during hospitalization and the significant proportion of patients with
4 abnormal findings in imaging studies is a concern and warrants further investigation. Cardiac complications may
5 have been missed, due to the overlapping symptomatology with COVID-19 as well as limited access or performed
6 diagnostic tests.

7 Contrary to cardiac complications, which in our study were rarely diagnosed during hospitalization,
8 venous thrombosis and thromboembolism are common features of COVID-19, with a prevalence 3-4 times higher
9 when compared to seasonal influenza.⁷ Thromboembolic events are especially common in patients admitted to
10 the ICU, with pulmonary embolism being diagnosed more than 10 times as often (12.6% vs. 1.2%) in our cohort
11 compared to patients treated on the ward only. The prevalence of pulmonary embolism in the ICU population in
12 our study is lower than in studies based on data originating from patients hospitalized in the first months of the
13 pandemic, that reported a prevalence of up to 20.6%.^{36,37} This discrepancy most likely reflects the implementation
14 of enhanced antithrombotic prophylactic strategies in patients admitted with COVID-19 during the course of 2020.
15 Interestingly, we observed that thromboembolic complications were less common among patients known with
16 cardiac disease in our cohort. This observation is possibly related to pre-admission use of anticoagulants for the
17 treatment of pre-existing cardiac conditions. This will be explored in ongoing analyses.

18 Among different heart disease subtypes, severe heart failure (NYHA class III/IV) was most strongly
19 associated with in-hospital mortality in this study across the spectrum of different heart disease subtypes. Others
20 have also identified patients with heart failure as one of the groups at particular risk.^{38,39} Among 6,439 hospitalized
21 patients, in-hospital mortality was significantly higher among patients with a history of heart failure (aOR 1.88
22 [95% CI 1.27 – 2.78]).³⁸ Similar findings were reported by the Tomasoni et al. (n=692) with a crude HR of 2.43
23 [95% CI 1.69 – 3.50] for heart failure remaining significant after adjustment for age, sex, various comorbidities
24 and vitals and laboratory values at admission (adjusted HR 2.25 [95% CI 1.26 – 4.02]).³⁹ Whether the absolute risk
25 of being hospitalized in the presence of heart failure is also increased was recently investigated in a population-
26 based study, which found an aOR of 4.43 (95% CI 2.59 – 8.04; p-value <0.001).⁴⁰ Besides age and male sex, heart
27 failure had the strongest association with in-hospital mortality among various different comorbidities in this study.

28 Apart from advanced heart failure, we also observed an independent association between pre-existing
29 atrial fibrillation and in-hospital mortality. Previous studies have predominantly focused on the impact of atrial
30 fibrillation occurring during hospitalization in patients with COVID-19. Mountantonakis et al. evaluated the

1 incremental effect of new-onset atrial fibrillation with a history of atrial fibrillation on in-hospital mortality and
2 found an aRR of 1.18 [95% CI 1.04 – 1.33].⁴¹ Whether pre-existing atrial fibrillation should be viewed as an
3 independent risk factor of in-hospital mortality or is primarily a proxy for underlying frailty in the elderly remains
4 to be explored.

5 Importantly, besides severe heart failure and atrial fibrillation, none of the other types of heart disease
6 were associated with in-hospital mortality after adjustment for age, sex, BMI, diabetes, hypertension, CKD and
7 COPD. This heterogeneity was also evident in the population based study by Petrilli et al. in which patients with
8 CAD did not seem to be at increased risk of hospitalization due to COVID-19 (aOR was 1.08; 95% CI 0.81 –
9 1.44; p-value 0.60).⁴⁰ It could therefore be questioned whether all patients with heart disease should be defined as
10 a group at risk, certainly when viewed in context of other demographic factors such as age and sex, as these appear
11 to contribute to COVID-19 outcome to a much larger extent than pre-existing cardiac disease.¹²

12 As heart failure and atrial fibrillation are primarily diseases of the elderly, with a steep increase in the
13 prevalence as well as severity beyond the age of 75 years⁴²⁻⁴⁴, it is likely that a majority of patients with the heart
14 disease subtypes associated with the highest risk as identified in this study will be among the first to be vaccinated
15 according to current vaccine rollout strategies across Europe.²² Adults with comorbidities are identified as an
16 additional priority group but current advice lacks detail on which comorbidities should be considered high-risk.
17 Therefore, we also determined the strength per heart disease subtype and in-hospital mortality in patients <65
18 years. Due to the lower comorbidity burden in this group, we hypothesized that the associations for the different
19 types of heart disease would be higher in this patient population. For myocardial infarction and NYHA III/IV we
20 found a significant interaction with age, with an aRR that was higher in patients ≤65 years. However, we lacked
21 sufficient power to draw any strong conclusions from this finding.

22

23 *Limitations*

24 Our study determines associations on a population level (e.g., all patients with heart failure) rather than individual
25 risks and is limited to patients with COVID-19 that were hospitalized. In some countries that provided data,
26 hospitalization and potentially life-sustaining treatments such as mechanical ventilation, might have been withheld
27 in those with high frailty, including those with severe heart failure, which may have led to an overestimation of
28 the found associations. Furthermore, we could not reliably investigate associations between heart disease subtypes
29 and HDU/ICU admission since we observed that patients admitted to a critical care unit were overall younger
30 with fewer comorbidities. Since age in particular is well-known to be associated with a more severe COVID-19

1 disease course, this difference in baseline characteristics in those admitted to HDU/ICU is suggestive of an
2 underlying selection of patients admitted for critical care. The mechanisms behind this selection are likely
3 complex, influenced by amongst others the variability in critical care bed numbers across participating countries
4 and available staff that may have led to demand for life-saving resources (nearly) exceeding supply, patient
5 preference as well as cultural differences in clinical decision making. A further study limitation is that we only
6 examined the impact of pre-existing CVD on in-hospital mortality, which excludes the many deaths that have
7 occurred in community settings and nursing homes. Finally, there was no central adjudication of events in either
8 of the two registries. Moreover, echocardiographic data, providing more in-depth insight into heart failure etiology
9 as well as the degree of systolic and diastolic dysfunction prior to hospitalization are lacking.

10

11 *Future perspectives*

12 With approvals of the first vaccines for COVID-19 there is finally hope of starting the containment of COVID-
13 19 during 2021. During the first year of the pandemic, the scientific community has improved the understanding
14 of this new disease considerably, including its effects on the cardiovascular system. However, many aspects are
15 still unknown. Evidence for a strong causal relationship between SARS-CoV-2 and myocarditis is still lacking.
16 The discrepancy between the low prevalence of clinically diagnosed cardiac complications among the most ill
17 requiring hospitalization and the large proportion of only mildly or even asymptomatic patients with abnormal
18 findings on CMR after the acute phase of the disease has ceased warrant further investigation to understand their
19 specificity and significance. In addition, studies on the long-term incidence of major adverse cardiac events
20 (MACE) are required. Future studies should also evaluate the added value of different pre-existing cardiac
21 comorbidities such as severe heart failure in prognostic models. Lastly, considering the high incidence of (venous)
22 thromboembolic events, the results of randomized controlled trials regarding the optimal antithrombotic
23 prophylactic strategy are much awaited.

24

25 *Conclusion*

26 In this large retrospective cohort study across sixteen countries, more than one in three patients hospitalized with
27 COVID-19 had underlying chronic cardiac disease. Patients with a history of heart disease were older, more
28 frequently male and had a higher burden of other comorbid conditions at baseline. Inherently, patients with a
29 history of heart disease have a poorer outcome once infected with SARS-CoV-2. However, after multivariable
30 adjustment we did not find a significant association between chronic heart disease and in-hospital mortality. When

1 evaluating the associations between specific heart disease subtypes and in-hospital mortality, considerable
2 heterogeneity was detected. Of all patients with heart disease, those with severe heart failure are at greatest risk
3 of death when hospitalized with COVID-19.

4

5 **Funding**

6 This work was supported by the Dutch Heart Foundation, as a National Institute for Health Research
7 (NIHR)/British Heart Foundation COVID-19 Flagship research programme, the EuroQol Research Foundation,
8 Novartis Global, Amgen Europe, Novo Nordisk Nederland, Servier Nederland and Daiichi Sankyo Nederland
9 (CAPACITY-COVID) and the German Centre for Infection Research (DZIF) and the Willy Robert Pitzer
10 Foundation (LEOSS).

11 Marijke Linschoten is supported by the Alexandre Suerman Stipend of the University Medical Center
12 Utrecht. Folkert W. Asselbergs is supported by CardioVasculair Onderzoek Nederland 2015-12 eDETECT and
13 along with Bryan Williams supported by the NIHR University College London Hospitals Biomedical Research
14 Centre. Fleur V. Y. Tjong is supported by the NWO Rubicon grant 452019308, the Amsterdam Cardiovascular
15 Institute MD/PhD Grant 2019-2020 and Postdoc Grant 2020. The work of Philippe Kopylov and Daria Gognieva
16 was financed by the Ministry of Science and Higher Education of the Russian Federation within the framework
17 of state support for the creation and development of World-Class Research Center Digital biodesign and
18 personalized healthcare no. 057-15-2020-926.

19

20 **Acknowledgements**

21 We want to express our gratitude and appreciation to all participating sites and researchers part of the CAPACITY-
22 COVID collaborative consortium and LEOSS study and all research professionals that have contributed to the
23 data collection. CAPACITY-COVID gratefully acknowledges the following organizations for their assistance in
24 the development of the registry and/or coordination regarding the data registration in the collaborating centers:
25 partners of the Dutch CardioVascular Alliance (DCVA), the Dutch Association of Medical Specialists (FMS) and
26 the British Heart Foundation Centres of Research Excellence. In addition, the consortium is thankful for the
27 endorsement of the CAPACITY-COVID initiative by the European Society of Cardiology (ESC), the European
28 Heart Network (EHN) and the Society for Cardiovascular Magnetic Resonance (SCMR). Part of this work is
29 supported by the BigData@Heart Consortium, funded by the Innovative Medicines Initiative-2 joint undertaking
30 under grant agreement no 116074. This joint undertaking receives support from the EU's Horizon 2020 research

1 and innovation programme and EFPIA. Furthermore we want to thank the LEOSS study infrastructure group:
2 Jörg Janne Vehreschild (Goethe University Frankfurt, University Hospital of Cologne), Lisa Pilgram (Goethe
3 University Frankfurt), Carolin E. M. Jakob (University Hospital of Cologne), Melanie Stecher (University
4 Hospital of Cologne), Max Schons (University Hospital of Cologne), Susana M. Nunes de Miranda (University
5 Hospital of Cologne), Annika Claßen (University Hospital of Cologne), Sandra Fuhrmann (University Hospital
6 of Cologne), Bernd Franke (University Hospital of Cologne), Nick Schulze (University Hospital of Cologne),
7 Fabian Praßer (Charité, Universitätsmedizin Berlin) and Martin Lablans (University Medical Center Mannheim).
8

9 **References**

- 10 1. Johns Hopkins Coronavirus Research Center: <https://coronavirus.jhu.edu/map.html> (4 March 2021).
- 11 2. Gudbjartsson DF, Helgason A, Jonsson H, Magnusson OT, Melsted P, Norddahl GL, Saemundsdottir J,
12 Sigurdsson A, Sulem P, Agustsdottir AB, Eiriksdottir B, Fridriksdottir R, Gardarsdottir EE, Georgsson
13 G, Gretarsdottir OS, Gudmundsson KR, Gunnarsdottir TR, Gylfason A, Holm H, Jensson BO,
14 Jonasdottir A, Jonsson F, Josefsdottir KS, Kristjansson T, Magnusdottir DN, le Roux L, Sigmundsdottir
15 G, Sveinbjornsson G, Sveinsdottir KE, Sveinsdottir M, Thorarensen EA, Thorbjornsson B, Löve A,
16 Masson G, Jonsdottir I, Möller AD, Gudnason T, Kristinsson KG, Thorsteinsdottir U, Stefansson K.
17 Spread of SARS-CoV-2 in the Icelandic Population. *N Engl J Med.* 2020;382(24):2302-2315. doi:
18 10.1056/NEJMoa2006100.
- 19 3. Petersen E, Koopmans M, Go U, Hamer DH, Petrosillo N, Castelli F, Storgaard M, Al Khalili S,
20 Simonsen L. Comparing SARS-CoV-2 with SARS-CoV and influenza pandemics. *Lancet Infect Dis.*
21 2020;20(9):e238-e244. doi: 10.1016/S1473-3099(20)30484-9.
- 22 4. WHO Middle East respiratory syndrome coronavirus (MERS-CoV): key facts.
23 <https://www.who.int/en/news-room/fact-sheets/detail/middle-east-respiratory-syndrome-coronavirus->
24 [mers-cov\)](https://www.who.int/en/news-room/fact-sheets/detail/middle-east-respiratory-syndrome-coronavirus-(mers-cov)) Date: March 11, 2019. (3 September 2020).
- 25 5. WHO Update 49—SARS case fatality ratio, incubation period.
26 https://www.who.int/csr/sars/archive/2003_05_07a/en/ Date: May 7, 2003. (3 September 2020).
- 27 6. Ruan S. Likelihood of survival of coronavirus disease 2019. *Lancet Infect Dis.* 2020;20(6):630-631. doi:
28 10.1016/S1473-3099(20)30257-7.
- 29 7. Piroth L, Cottenet J, Mariet AS, Bonniaud P, Blot M, Tubert-Bitter P, Quantin C. Comparison of the
30 characteristics, morbidity, and mortality of COVID-19 and seasonal influenza: a nationwide, population-

- 1 based retrospective cohort study. *Lancet Respir Med.* 2020;9(3):251–9. doi: 10.1016/S2213-
2 2600(20)30527-0.
- 3 8. Docherty AB, Harrison EM, Green CA, Hardwick HE, Pius R, Norman L, Holden KA, Read JM,
4 Dondelinger F, Carson G, Merson L, Lee J, Plotkin D, Sigfrid L, Halpin S, Jackson C, Gamble C, Horby
5 PW, Nguyen-Van-Tam JS, Ho A, Russell CD, Dunning J, Openshaw PJ, Baillie JK, Semple MG;
6 ISARIC4C investigators. Features of 20 133 UK patients in hospital with covid-19 using the ISARIC
7 WHO Clinical Characterisation Protocol: prospective observational cohort study. *BMJ.*
8 2020;369:m1985. doi: 10.1136/bmj.m1985.
- 9 9. Linschoten M, Peters S, van Smeden M, Jewbali LS, Schaap J, Siebelink HM, Smits PC, Tieleman RG,
10 van der Harst P, van Gilst WH, Asselbergs FW; CAPACITY-COVID collaborative consortium. Cardiac
11 complications in patients hospitalised with COVID-19. *Eur Heart J Acute Cardiovasc Care.*
12 2020;9(8):817-823. doi: 10.1177/2048872620974605.
- 13 10. Yehia BR, Winegar A, Fogel R, Fakhri M, Ottenbacher A, Jessor C, Bufalino A, Huang RH, Cacchione
14 J. Association of Race With Mortality Among Patients Hospitalized With Coronavirus Disease 2019
15 (COVID-19) at 92 US Hospitals. *JAMA Netw Open.* 2020;3(8):e2018039. doi:
16 10.1001/jamanetworkopen.2020.18039.
- 17 11. Fried MW, Crawford JM, Mospan AR, Watkins SE, Munoz Hernandez B, Zink RC, Elliott S, Burleson
18 K, Landis C, Reddy KR, Brown RS. Patient Characteristics and Outcomes of 11,721 Patients with
19 COVID19 Hospitalized Across the United States. *Clin Infect Dis.* 2020:ciaa1268. doi:
20 10.1093/cid/ciaa1268. Epub ahead of print.
- 21 12. Williamson EJ, Walker AJ, Bhaskaran K, Bacon S, Bates C, Morton CE, Curtis HJ, Mehrkar A, Evans
22 D, Inglesby P, Cockburn J, McDonald HI, MacKenna B, Tomlinson L, Douglas IJ, Rentsch CT, Mathur
23 R, Wong AYS, Grieve R, Harrison D, Forbes H, Schultze A, Croker R, Parry J, Hester F, Harper S,
24 Perera R, Evans SJW, Smeeth L, Goldacre B. Factors associated with COVID-19-related death using
25 OpenSAFELY. *Nature.* 2020;584(7821):430-436. doi: 10.1038/s41586-020-2521-4.
- 26 13. Wu Z, McGoogan JM. Characteristics of and Important Lessons From the Coronavirus Disease 2019
27 (COVID-19) Outbreak in China: Summary of a Report of 72 314 Cases From the Chinese Center for
28 Disease Control and Prevention. *JAMA.* 2020;323(13):1239-1242. doi: 10.1001/jama.2020.2648.

- 1 14. Weng TC, Chiu HR, Chen SY, Shih FY, King CC, Fang CC. National retrospective cohort study to
2 identify age-specific fatality risks of comorbidities among hospitalised patients with influenza-like
3 illness in Taiwan. *BMJ Open*. 2019;9(6):e025276. doi: 10.1136/bmjopen-2018-025276.
- 4 15. Mertz D, Kim TH, Johnstone J, Lam PP, Science M, Kuster SP, Fadel SA, Tran D, Fernandez E,
5 Bhatnagar N, Loeb M. Populations at risk for severe or complicated influenza illness: systematic review
6 and meta-analysis. *BMJ*. 2013;347:f5061. doi: 10.1136/bmj.f5061.
- 7 16. Siropaides CH, Sulistio MS, Reimold SC. Crucial Conversations With Patients in the Era of COVID-19.
8 *Circulation*. 2020;142(3):191-193. doi: 10.1161/CIRCULATIONAHA.120.047374. Epub 2020 May 6.
- 9 17. Mafham MM, Spata E, Goldacre R, Gair D, Curnow P, Bray M, Hollings S, Roebuck C, Gale CP, Mamas
10 MA, Deanfield JE, de Belder MA, Luescher TF, Denwood T, Landray MJ, Emberson JR, Collins R,
11 Morris EJA, Casadei B, Baigent C. COVID-19 pandemic and admission rates for and management of
12 acute coronary syndromes in England. *Lancet*. 2020;396(10248):381-389. doi: 10.1016/S0140-
13 6736(20)31356-8.
- 14 18. Linschoten M, Asselbergs FW. CAPACITY-COVID: a European Registry to determine the role of
15 cardiovascular disease in the COVID-19 pandemic. *Eur Heart J*. 2020;41(19):1795-1796. doi:
16 10.1093/eurheartj/ehaa280.
- 17 19. ISARIC COVID-19 CRF. <https://isaric.org/research/covid-19-clinical-research-resources/covid-19-crf/>
18 (16 of February 2021).
- 19 20. Jakob CEM, Borgmann S, Duygu F, Behrends U, Hower M, Merle U, Friedrichs A, Tometten L, Hanses
20 F, Jung N, Rieg S, Wille K, Grüner B, Klinker H, Gersbacher-Runge N, Hellwig K, Eberwein L, Dolff
21 S, Rauschnig D, von Bergwelt-Baildon M, Lanznaster J, Strauß R, Trauth J, de With K, Ruethrich M,
22 Lueck C, Nattermann J, Tschardtke L, Pilgram L, Fuhrmann S, Classen A, Stecher M, Schons M, Spinner
23 C, Vehreschild JJ. First results of the "Lean European Open Survey on SARS-CoV-2-Infected Patients
24 (LEOSS)". *Infection*. 2021 Feb;49(1):63-73. doi: 10.1007/s15010-020-01499-0.
- 25 21. Jakob CEM, Kohlmayer F, Meurers T, Vehreschild JJ, Prasser F. Design and evaluation of a data
26 anonymization pipeline to promote Open Science on COVID-19. *Sci Data*. 2020 Dec 10;7(1):435. doi:
27 10.1038/s41597-020-00773-y.
- 28 22. European Centre for Disease Prevention and Control. Overview of COVID-19 vaccination strategies and
29 vaccine deployment plans in the EU/EEA and the UK – 2 December 2020. ECDC: Stockholm; 2020.

- 1 23. Pritchard MG, ISARIC Clinical Characterisation Group. COVID-19 symptoms at hospital admission
2 vary with age and sex: ISARIC multinational study.
3 medRxiv 2020.10.26.20219519; doi:<https://doi.org/10.1101/2020.10.26.20219519>
- 4 24. Michelen M, Manoharan L, Elkheir N, Cheng V, Dagens D, Hastie C, O'Hara M, Suet JC, Burls A,
5 Foote C, Carson G, Olliaro P, Sigfrid L, Stavropoulou C. Characterising long-term covid-19: a rapid
6 living systematic review.
7 medRxiv 2020.12.08.20246025; doi:<https://doi.org/10.1101/2020.12.08.20246025>
- 8 25. Carfi A, Bernabei R, Landi F; Gemelli Against COVID-19 Post-Acute Care Study Group. Persistent
9 Symptoms in Patients After Acute COVID-19. JAMA. 2020;324(6):603-605. doi:
10 10.1001/jama.2020.12603.
- 11 26. Goërtz YMJ, Van Herck M, Delbressine JM, Vaes AW, Meys R, Machado FVC, Houben-Wilke S,
12 Burtin C, Posthuma R, Franssen FME, van Loon N, Hajian B, Spies Y, Vijlbrief H, van 't Hul AJ, Janssen
13 DJA, Spruit MA. Persistent symptoms 3 months after a SARS-CoV-2 infection: the post-COVID-19
14 syndrome? ERJ Open Res. 2020;6(4):00542-2020. doi: 10.1183/23120541.00542-2020.
- 15 27. Puntmann VO, Carerj ML, Wieters I, Fahim M, Arendt C, Hoffmann J, Shchendrygina A, Escher F,
16 Vasa-Nicotera M, Zeiher AM, Vehreschild M, Nagel E. Outcomes of Cardiovascular Magnetic
17 Resonance Imaging in Patients Recently Recovered From Coronavirus Disease 2019 (COVID-19).
18 JAMA Cardiol. 2020;5(11):1265-1273. doi: 10.1001/jamacardio.2020.3557. Erratum in: JAMA Cardiol.
19 2020;5(11):1308.
- 20 28. Nicin L, Abplanalp WT, Mellentin H, Kattih B, Tombor L, John D, Schmitto JD, Heineke J, Emrich F,
21 Arsalan M, Holubec T, Walther T, Zeiher AM, Dimmeler S. Cell type-specific expression of the putative
22 SARS-CoV-2 receptor ACE2 in human hearts. Eur Heart J. 2020;41(19):1804-1806. doi:
23 10.1093/eurheartj/ehaa311.
- 24 29. The Human Protein Atlas: <https://www.proteinatlas.org/ENSG00000130234-ACE2/celltype> (23
25 February 2021)
- 26 30. Richardson S, Hirsch JS, Narasimhan M, Crawford JM, McGinn T, Davidson KW; the Northwell
27 COVID-19 Research Consortium, Barnaby DP, Becker LB, Chelico JD, Cohen SL, Cookingham J,
28 Coppa K, Diefenbach MA, Dominello AJ, Duer-Hefele J, Falzon L, Gitlin J, Hajizadeh N, Harvin TG,
29 Hirschwerk DA, Kim EJ, Kozel ZM, Marrast LM, Mogavero JN, Osorio GA, Qiu M, Zanos TP.
30 Presenting Characteristics, Comorbidities, and Outcomes Among 5700 Patients Hospitalized With

- 1 COVID-19 in the New York City Area. *JAMA*. 2020;323(20):2052-2059. doi: 10.1001/jama.2020.6775.
2 Erratum in: *JAMA*. 2020;323(20):2098.
- 3 31. Lala A, Johnson KW, Januzzi JL, Russak AJ, Paranjpe I, Richter F, Zhao S, Somani S, Van Vleck T,
4 Vaid A, Chaudhry F, De Freitas JK, Fayad ZA, Pinney SP, Levin M, Charney A, Bagiella E, Narula J,
5 Glicksberg BS, Nadkarni G, Mancini DM, Fuster V; Mount Sinai COVID Informatics Center. Prevalence
6 and Impact of Myocardial Injury in Patients Hospitalized With COVID-19 Infection. *J Am Coll Cardiol*.
7 2020 Aug 4;76(5):533-546. doi: 10.1016/j.jacc.2020.06.007. Epub 2020 Jun 8.
- 8 32. Halushka MK, Vander Heide RS. Myocarditis is rare in COVID-19 autopsies: cardiovascular findings
9 across 277 postmortem examinations. *Cardiovasc Pathol*. 2021;50:107300. doi:
10 10.1016/j.carpath.2020.107300.
- 11 33. Huang L, Zhao P, Tang D, Zhu T, Han R, Zhan C, Liu W, Zeng H, Tao Q, Xia L. Cardiac Involvement
12 in Patients Recovered From COVID-2019 Identified Using Magnetic Resonance Imaging. *JACC*
13 *Cardiovasc Imaging*. 2020;13(11):2330-2339. doi: 10.1016/j.jcmg.2020.05.004.
- 14 34. Kotecha T, Knight DS, Razvi Y, Kumar K, Vimalasvaran K, Thornton G, Patel R, Chacko L, Brown JT,
15 Coyle C, Leith D, Shetye A, Ariff B, Bell R, Captur G, Coleman M, Goldring J, Gopalan D, Heightman
16 M, Hillman T, Howard L, Jacobs M, Jeetley PS, Kanagaratnam P, Kon OM, Lamb LE, Manisty CH,
17 Mathurdas P, Mayet J, Negus R, Patel N, Pierce I, Russell G, Wolff A, Xue H, Kellman P, Moon JC,
18 Treibel TA, Cole GD, Fontana M. Patterns of myocardial injury in recovered troponin-positive COVID-
19 19 patients assessed by cardiovascular magnetic resonance. *Eur Heart J*. 2021:ehab075. doi:
20 10.1093/eurheartj/ehab075. Epub ahead of print.
- 21 35. Rajpal S, Tong MS, Borchers J, Zareba KM, Obarski TP, Simonetti OP, Daniels CJ. Cardiovascular
22 Magnetic Resonance Findings in Competitive Athletes Recovering From COVID-19 Infection. *JAMA*
23 *Cardiol*. 2021;6(1):116-118. doi: 10.1001/jamacardio.2020.4916.
- 24 36. Klok FA, Kruip MJHA, van der Meer NJM, Arbous MS, Gommers DAMPJ, Kant KM, Kaptein FHJ,
25 van Paassen J, Stals MAM, Huisman MV, Endeman H. Incidence of thrombotic complications in
26 critically ill ICU patients with COVID-19. *Thromb Res*. 2020;191:145-147. doi:
27 10.1016/j.thromres.2020.04.013.
- 28 37. Poissy J, Goutay J, Caplan M, Parmentier E, Duburcq T, Lassalle F, Jeanpierre E, Rauch A, Labreuche
29 J, Susen S; Lille ICU Haemostasis COVID-19 Group. Pulmonary Embolism in Patients With COVID-

- 1 19: Awareness of an Increased Prevalence. *Circulation*. 2020;142(2):184-186. doi:
2 10.1161/CIRCULATIONAHA.120.047430.
- 3 38. Alvarez-Garcia J, Lee S, Gupta A, Cagliostro M, Joshi AA, Rivas-Lasarte M, Contreras J, Mitter SS,
4 LaRocca G, Tlachi P, Brunjes D, Glicksberg BS, Levin MA, Nadkarni G, Fayad Z, Fuster V, Mancini
5 D, Lala A. Prognostic Impact of Prior Heart Failure in Patients Hospitalized With COVID-19. *J Am Coll*
6 *Cardiol*. 2020 Nov 17;76(20):2334-2348. doi: 10.1016/j.jacc.2020.09.549.
- 7 39. Tomasoni D, Inciardi RM, Lombardi CM, Tedino C, Agostoni P, Ameri P, Barbieri L, Bellasi A,
8 Camporotondo R, Canale C, Carubelli V, Carugo S, Catagnano F, Dalla Vecchia LA, Danzi GB, Di
9 Pasquale M, Gaudenzi M, Giovinazzo S, Gneccchi M, Iorio A, La Rovere MT, Leonardi S, Maccagni G,
10 Mapelli M, Margonato D, Merlo M, Monzo L, Mortara A, Nuzzi V, Piepoli M, Porto I, Pozzi A, Sarullo
11 F, Sinagra G, Volterrani M, Zacccone G, Guazzi M, Senni M, Metra M. Impact of heart failure on the
12 clinical course and outcomes of patients hospitalized for COVID-19. Results of the Cardio-COVID-Italy
13 multicentre study. *Eur J Heart Fail*. 2020;22(12):2238-2247. doi: 10.1002/ejhf.2052.
- 14 40. Petrilli CM, Jones SA, Yang J, Rajagopalan H, O'Donnell L, Chernyak Y, Tobin KA, Cerfolio RJ,
15 Francois F, Horwitz LI. Factors associated with hospital admission and critical illness among 5279
16 people with coronavirus disease 2019 in New York City: prospective cohort study. *BMJ*.
17 2020;369:m1966. doi: 10.1136/bmj.m1966.
- 18 41. Mountantonakis SE, Saleh M, Fishbein J, Gandomi A, Lesser M, Chelico J, Gabriels J, Qiu M, Epstein
19 LM; Northwell COVID-19 Research Consortium. Atrial fibrillation is an independent predictor for in-
20 hospital mortality in patients admitted with SARS-CoV-2 infection. *Heart Rhythm*. 2021:S1547-
21 5271(21)00040-0. doi: 10.1016/j.hrthm.2021.01.018.
- 22 42. Störk S, Handrock R, Jacob J, Walker J, Calado F, Lahoz R, Hupfer S, Klebs S. Epidemiology of heart
23 failure in Germany: a retrospective database study. *Clin Res Cardiol*. 2017;106(11):913-922. doi:
24 10.1007/s00392-017-1137-7.
- 25 43. Ammar KA, Jacobsen SJ, Mahoney DW, Kors JA, Redfield MM, Burnett JC Jr, Rodeheffer RJ.
26 Prevalence and prognostic significance of heart failure stages: application of the American College of
27 Cardiology/American Heart Association heart failure staging criteria in the community. *Circulation*.
28 2007;115(12):1563-70. doi: 10.1161/CIRCULATIONAHA.106.666818.
- 29 44. Schnabel RB, Yin X, Gona P, Larson MG, Beiser AS, McManus DD, Newton-Cheh C, Lubitz SA,
30 Magnani JW, Ellinor PT, Seshadri S, Wolf PA, Vasan RS, Benjamin EJ, Levy D. 50 year trends in atrial

1 fibrillation prevalence, incidence, risk factors, and mortality in the Framingham Heart Study: a cohort
2 study. Lancet. 2015 Jul 11;386(9989):154-62. doi: 10.1016/S0140-6736(14)61774-8.
3
4
5
6
7
8
9
10
11
12
13
14
15
16
17
18
19
20
21
22
23
24
25
26
27
28
29
30

1 **Tables**

Table 1: Baseline characteristics total cohort, stratified by pre-existing cardiac disease and age					
	Overall	No pre-existing cardiac disease		Pre-existing cardiac disease	
		≤65 years	>65 years	≤65 years	>65 years
Total	10481	4416	2870	599	2596
Age, years (%)*					
18 – 25	148 (1.4)	143 (3.2)	0 (0.0)	5 (0.8)	0 (0.0)
26 – 35	429 (4.1)	415 (9.4)	0 (0.0)	14 (2.3)	0 (0.0)
36 – 45	717 (6.8)	680 (15.4)	0 (0.0)	37 (6.2)	0 (0.0)
46 – 55	1503 (14.3)	1359 (30.8)	0 (0.0)	144 (24.0)	0 (0.0)
56 – 65	2218 (21.2)	1819 (41.2)	0 (0.0)	399 (66.6)	0 (0.0)
66 – 75	2346 (22.4)	0 (0.0)	1446 (50.4)	0 (0.0)	900 (34.7)
76 – 85	2247 (21.4)	0 (0.0)	1076 (37.5)	0 (0.0)	1171 (45.1)
>85	873 (8.3)	0 (0.0)	348 (12.1)	0 (0.0)	525 (20.2)
Sex, female (%)*	4051 (38.7)	1677 (38.0)	1283 (44.7)	168 (28.0)	923 (35.6)
Ethnicity (%)*					
Arab	458 (5.0)	278 (7.5)	90 (3.5)	39 (7.4)	51 (2.2)
Asian	518 (5.7)	332 (8.9)	74 (2.9)	58 (11.1)	54 (2.3)
Black	278 (3.0)	192 (5.2)	52 (2.0)	17 (3.2)	17 (0.7)
Latin-American	25 (0.3)	14 (0.4)	6 (0.2)	4 (0.8)	1 (0.0)
White	7606 (83.1)	2735 (73.5)	2277 (89.0)	395 (75.4)	2199 (93.5)
Other	269 (2.9)	170 (4.6)	59 (2.3)	11 (2.1)	29 (1.2)
BMI (kg/m²)(%) *					
Underweight (<18.5)	125 (1.8)	22 (0.8)	65 (3.5)	10 (2.3)	28 (1.5)
Normal weight (18.5 – 24.9)	2095 (30.1)	732 (26.0)	670 (35.8)	103 (23.5)	590 (32.0)
Overweight (25.0 – 29.9)	2691 (38.6)	1093 (38.8)	697 (37.3)	167 (38.0)	734 (39.9)
Obese (30.0 – 34.9)	1372 (19.7)	615 (21.8)	302 (16.1)	101 (23.0)	354 (19.2)
Morbidly obese (> 34.9)	685 (9.8)	355 (12.6)	137 (7.3)	58 (13.2)	135 (7.3)
Cardiovascular risk factors (%)					
Diabetes*	2482 (24.0)	668 (15.4)	722 (25.5)	204 (34.5)	888 (34.7)
Hypertension*	4973 (48.4)	1207 (27.8)	1564 (55.8)	342 (58.7)	1860 (73.1)
Peripheral arterial disease*	442 (5.1)	41 (1.1)	117 (5.0)	28 (5.8)	256 (12.4)
Comorbidities (%)					
Chronic kidney disease*	1274 (12.3)	163 (3.7)	339 (12.0)	73 (12.4)	699 (27.4)
COPD*	994 (9.6)	168 (3.8)	342 (12.1)	64 (10.8)	420 (16.4)
Use cardiovascular drugs (%)					
ACE-inhibitors*	1848 (18.1)	372 (8.7)	514 (18.3)	181 (30.9)	781 (30.6)
Aldosterone antagonist	390 (3.8)	28 (0.6)	52 (1.8)	49 (8.3)	261 (10.3)
Anti-platelet	2003 (19.4)	195 (4.5)	543 (19.1)	273 (46.4)	992 (38.9)
Angiotensin receptor blocker*	1340 (13.1)	300 (7.0)	407 (14.6)	102 (17.4)	531 (21.0)
Calcium-blocker	1658 (16.0)	394 (9.0)	503 (17.7)	127 (21.6)	634 (24.9)
Diuretic	2032 (19.7)	302 (6.9)	530 (18.7)	146 (24.9)	1054 (41.4)
Insulin	699 (6.7)	169 (3.8)	191 (6.7)	77 (13.0)	262 (10.2)
Lipid-lowering*	2978 (30.2)	491 (12.0)	804 (29.7)	322 (56.1)	1361 (55.0)
Oral anti-diabetic	1258 (12.0)	346 (7.8)	378 (13.2)	99 (16.6)	435 (16.8)

2 * Variables included in the multiple imputation model

3 ACE = Angiotensin converting enzyme; BMI = Body Mass Index; COPD = Chronic Obstructive Pulmonary
4 Disease

5
6

Table 2: Complaints, vitals and laboratory values at admission stratified by pre-existing cardiac disease and age					
	Overall	No pre-existing cardiac disease		Pre-existing cardiac disease	
		≤65 years	>65 years	≤65 years	>65 years
Total	10481	4416	2870	599	2596
Admission					
Onset of symptoms to admission, days, median, [IQR]	6 [2 – 9]	6 [2 – 9]	5 [1 – 9]	6 [2 – 9]	4 [1 – 8]
Complaints at admission (%)					
Anosmia	402 (4.1)	265 (6.5)	65 (2.5)	26 (4.5)	46 (1.9)
Cough	5472 (56.4)	2510 (62.0)	1418 (53.5)	329 (57.5)	1215 (50.1)
Dyspnea	5056 (52.6)	2163 (53.9)	1362 (51.9)	302 (53.1)	1229 (51.2)
Fatigue	2777 (28.6)	1120 (27.6)	826 (31.2)	152 (26.6)	679 (28.0)
Fever	5852 (60.3)	2628 (64.9)	1556 (58.8)	348 (60.8)	1320 (54.4)
Gastrointestinal symptoms	2055 (21.2)	870 (21.5)	571 (21.6)	128 (22.4)	486 (20.0)
Palpitations	117 (1.2)	34 (0.8)	31 (1.2)	12 (2.1)	40 (1.6)
Sore throat	776 (8.0)	434 (10.7)	188 (7.1)	45 (7.9)	109 (4.5)
Vitals at admission (%)					
Temperature (°C)*					
< 35.1	49 (0.6)	11 (0.4)	16 (0.8)	3 (0.7)	19 (1.0)
35.1 – 37.2	2821 (37.4)	1057 (34.5)	802 (38.0)	178 (40.2)	784 (40.9)
37.3 – 37.9	1698 (22.5)	702 (22.9)	458 (21.7)	97 (21.9)	441 (23.0)
38.0 – 38.9	2030 (26.9)	849 (27.7)	575 (27.2)	115 (26.0)	491 (25.6)
39.0 – 39.9	833 (11.0)	395 (12.9)	234 (11.1)	44 (9.9)	160 (8.3)
> 39.9	109 (1.4)	53 (1.7)	27 (1.3)	6 (1.4)	23 (1.2)
Respiratory rate (breaths/min)					
< 16	945 (12.0)	385 (11.8)	254 (11.7)	60 (13.0)	246 (12.4)
16 – 21	3421 (43.4)	1432 (43.9)	933 (42.9)	216 (47.0)	840 (42.4)
22 – 29	2370 (30.1)	942 (28.9)	682 (31.4)	125 (27.2)	621 (31.3)
> 29	1145 (14.5)	505 (15.5)	305 (14.0)	59 (12.8)	276 (13.9)
Heart rate (beats/min)					
< 45	36 (0.4)	11 (0.3)	10 (0.4)	1 (0.2)	14 (0.6)
45 – 59	218 (2.5)	52 (1.4)	59 (2.4)	14 (2.7)	93 (4.2)
60 – 89	4617 (52.4)	1716 (46.9)	1370 (56.5)	265 (51.4)	1266 (57.1)
90 – 119	3404 (38.6)	1660 (45.3)	860 (35.4)	207 (40.1)	677 (30.6)
> 119	544 (6.2)	222 (6.1)	127 (5.2)	29 (5.6)	166 (7.5)
Systolic blood pressure (mmHg)					
< 80	47 (0.6)	8 (0.3)	12 (0.6)	5 (1.1)	22 (1.1)
80 – 99	349 (4.6)	104 (3.4)	102 (4.8)	30 (6.8)	113 (5.9)
100 – 119	1648 (21.9)	702 (23.0)	408 (19.3)	109 (24.8)	429 (22.3)
120 – 139	2764 (36.7)	1289 (42.2)	702 (33.2)	156 (35.5)	617 (32.1)
140 – 179	2489 (33.0)	891 (29.1)	801 (37.8)	132 (30.1)	665 (34.6)
> 179	240 (3.2)	63 (2.1)	92 (4.3)	7 (1.6)	78 (4.1)
Diastolic blood pressure (mmHg)					
< 40	27 (0.4)	7 (0.2)	9 (0.4)	2 (0.5)	9 (0.5)
40 – 59	821 (10.9)	178 (5.8)	267 (12.6)	58 (13.2)	318 (16.5)
60 – 89	5399 (71.7)	2256 (73.9)	1519 (71.8)	316 (72.0)	1308 (68.1)
90 – 109	1157 (15.4)	567 (18.6)	284 (13.4)	57 (13.0)	249 (13.0)
> 109	125 (1.7)	45 (1.5)	36 (1.7)	6 (1.4)	38 (2.0)
Oxygen saturation (%)*					
< 60	45 (0.6)	20 (0.6)	13 (0.6)	4 (0.9)	8 (0.4)
60 – 69	38 (0.5)	16 (0.5)	10 (0.5)	2 (0.5)	10 (0.5)
70 – 79	133 (1.8)	54 (1.8)	39 (1.8)	5 (1.1)	35 (1.8)
80 – 89	853 (11.3)	286 (9.3)	286 (13.5)	51 (11.6)	230 (12.0)

90 – 95	3156 (41.8)	1186 (38.5)	934 (44.1)	185 (42.0)	851 (44.4)
96 – 100	3331 (44.1)	1518 (49.3)	836 (39.5)	193 (43.9)	784 (40.9)
Laboratory values at admission (%)					
CRP (mg/L) *					
< 3	295 (4.0)	168 (5.5)	59 (2.8)	14 (3.4)	54 (3.0)
3 – 29	1518 (20.5)	701 (22.8)	350 (16.7)	90 (21.7)	377 (20.7)
30 – 69	1735 (23.4)	692 (22.5)	488 (23.3)	106 (25.5)	449 (24.7)
70 – 119	1458 (19.7)	554 (18.0)	447 (21.3)	80 (19.3)	377 (20.7)
120 – 179	1151 (15.5)	437 (14.2)	361 (17.2)	59 (14.2)	294 (16.2)
180 – 249	674 (9.1)	264 (8.6)	212 (10.1)	37 (8.9)	161 (8.9)
> 249	575 (7.8)	259 (8.4)	180 (8.6)	29 (7.0)	107 (5.9)
White blood cell count (x 10⁹/L) *					
< 1.0	21 (0.3)	10 (0.3)	7 (0.3)	0 (0.0)	4 (0.2)
1.0 – 3.9	871 (11.8)	399 (13.0)	226 (10.8)	53 (12.6)	193 (10.7)
4.0 – 7.9	3922 (53.1)	1672 (54.3)	1076 (51.6)	220 (52.3)	954 (52.9)
8.0 – 11.9	1804 (24.4)	714 (23.2)	521 (25.0)	109 (25.9)	460 (25.5)
12.0 – 15.9	560 (7.6)	213 (6.9)	187 (9.0)	27 (6.4)	133 (7.4)
16.0 – 19.9	179 (2.4)	62 (2.0)	61 (2.9)	10 (2.4)	46 (2.6)
> 20	28 (0.4)	7 (0.2)	6 (0.3)	2 (0.5)	13 (0.7)
Lymphocyte count (x 10⁹/L)*					
< 0.1	37 (0.6)	9 (0.4)	15 (0.9)	4 (1.3)	9 (0.6)
0.10 – 0.29	215 (3.7)	46 (2.0)	81 (4.8)	8 (2.5)	80 (5.5)
0.30 – 0.49	559 (9.7)	149 (6.5)	205 (12.2)	15 (4.7)	190 (13.1)
0.50 – 0.79	1501 (26.2)	519 (22.7)	480 (28.5)	78 (24.5)	424 (29.3)
0.80 – 1.49	2456 (42.8)	1102 (48.2)	657 (39.1)	143 (45.0)	554 (38.2)
1.50 – 2.99	874 (15.2)	421 (18.4)	218 (13.0)	67 (21.1)	168 (11.6)
> 3.0	94 (1.6)	41 (1.8)	26 (1.5)	3 (0.9)	24 (1.7)
Hemoglobin (mmol/L) *					
< 3.73	16 (0.2)	5 (0.2)	8 (0.4)	0 (0.0)	3 (0.2)
3.73 – 4.90	102 (1.4)	36 (1.2)	24 (1.2)	5 (1.2)	37 (2.1)
4.91 – 6.15	426 (5.9)	121 (4.1)	121 (6.0)	29 (7.2)	155 (8.8)
6.16 – 7.39	1234 (17.2)	391 (13.1)	381 (18.9)	65 (16.1)	397 (22.6)
7.4 – 9.25	4069 (56.8)	1740 (58.4)	1212 (60.0)	207 (51.2)	910 (51.7)
> 9.25	1314 (18.3)	685 (23.0)	274 (13.6)	98 (24.3)	257 (14.6)
Platelets (x 10⁹/L)					
< 10	16 (0.2)	4 (0.1)	7 (0.4)	0 (0.0)	5 (0.3)
10 – 49	55 (0.8)	24 (0.8)	16 (0.9)	0 (0.0)	15 (0.9)
50 – 119	589 (8.7)	183 (6.4)	169 (9.0)	29 (7.4)	208 (12.6)
120 – 449	5886 (87.0)	2534 (89.2)	1614 (86.1)	348 (88.3)	1390 (83.9)
450 – 799	217 (3.2)	93 (3.3)	69 (3.7)	17 (4.3)	38 (2.3)
800 – 1199	5 (0.1)	4 (0.1)	0 (0.0)	0 (0.0)	1 (0.1)

1 * Variables included in the multiple imputation model

2 CRP = C-Reactive Protein IQR = Interquartile Range

3

4

5

6

7

Table 3: Outcome at discharge stratified by pre-existing cardiac disease and age

	Overall	No pre-existing cardiac disease		Pre-existing cardiac disease	
		≤65 years	>65 years	≤65 years	>65 years
Total	10481	4416	2870	599	2596
Admission					
Duration of hospitalization, days, median [IQR]	9 [5 – 19]	8 [4 – 17]	10 [5 – 20]	10 [5 – 20]	10 [5 – 20]
Admission to a critical care unit*	2655 (25.3)	1239 (28.1)	721 (25.1)	195 (32.6)	500 (19.3)
Duration of stay critical care unit, days, median [IQR]	13 [6 – 24]	13 [7 – 24]	13 [6 – 25]	13 [6 – 25]	12 [4 – 24]
Treatment					
Invasive ventilation	1996 (19.1)	932 (21.1)	558 (19.5)	146 (24.4)	360 (13.9)
Non-invasive ventilation	1189 (11.4)	569 (12.9)	320 (11.2)	82 (13.8)	218 (8.4)
ECMO	190 (1.8)	136 (3.1)	32 (1.1)	12 (2.0)	10 (0.4)
Complications (%)					
Cardiac					
Myocarditis	28 (0.3)	12 (0.3)	7 (0.3)	2 (0.3)	7 (0.3)
Myocardial infarction	60 (0.6)	8 (0.2)	18 (0.7)	7 (1.2)	27 (1.1)
Heart failure de novo	115 (1.2)	20 (0.5)	26 (1.0)	6 (1.0)	63 (2.5)
Thromboembolic					
Pulmonary embolism	420 (4.2)	197 (4.7)	139 (5.1)	23 (4.0)	61 (2.5)
Stroke	62 (0.6)	16 (0.4)	21 (0.8)	3 (0.5)	22 (0.9)
Venous thrombosis	89 (0.9)	46 (1.1)	27 (1.0)	2 (0.3)	14 (0.6)
Outcome (%)					
Deceased*	2111 (20.1)	321 (7.3)	822 (28.6)	82 (13.7)	886 (34.1)

1 * Variables included in the multiple imputation model

2 ECMO = Extracorporeal membrane oxygenation; IQR = Interquartile Range

3

4

5

6

7

8

9

10

11

12

13

14

15

16

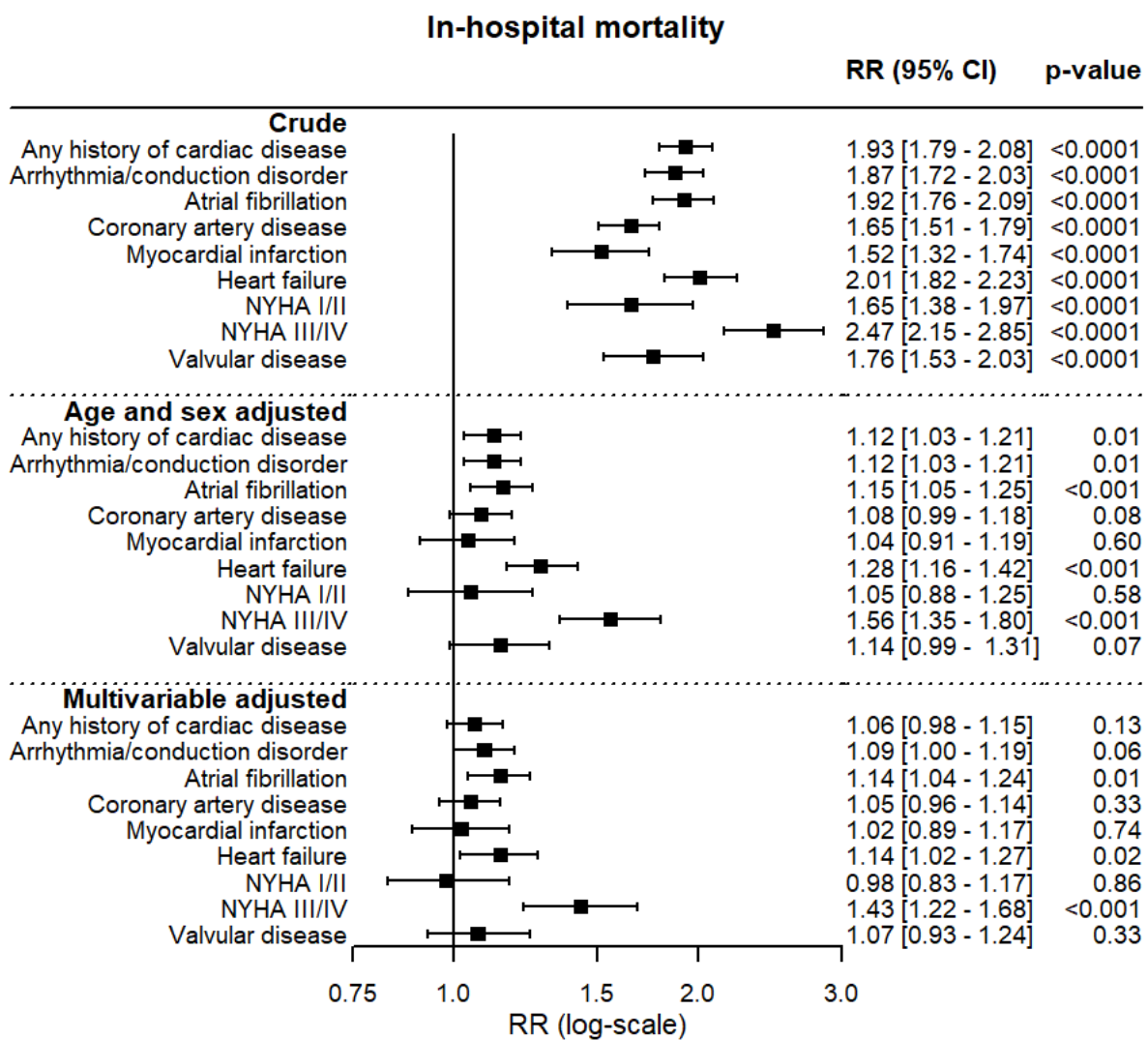
17

1 **Figure legends**

2 **Figure 1:** Associations (crude: top; age- and sex adjusted; center, multivariable adjusted; bottom) between any
3 history of cardiac disease, heart disease subtypes and in-hospital mortality.

4 **Figure 2:** Multivariable adjusted associations between any history of cardiac disease, heart disease subtypes and
5 in-hospital mortality in patients aged ≤ 65 (top) and >65 years (bottom). *p-value interaction heart disease subtype
6 and age. Patients with prior myocardial infarction are included in the coronary artery disease group.

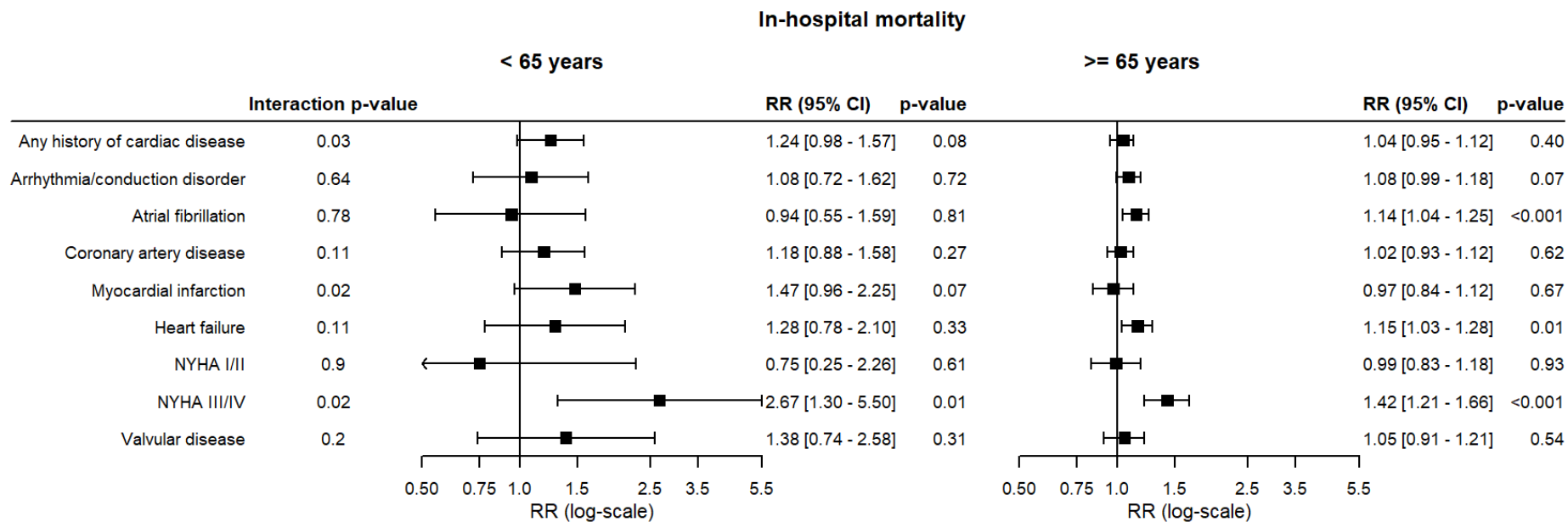
8 **Figure 1**



9

10

1 **Figure 2**



2

3

4

5

1 **Disclosures**

2 None.

3

4 **Authors**

5 Linschoten M¹, Uijl A², Schut A³, Jakob CEM^{4,5}, Romão LR^{6,7}, Bell RM⁸, McFarlane E⁹, Stecher M^{4,5}, Zondag
6 AGM², van Iperen EPA¹⁰, Hermans-van Ast W¹⁰, Lea NC⁷, Schaap J^{3,11}, Jewbali LS^{12,13}, Smits PC¹⁴, Patel RS^{7,9},
7 Aujayeb A¹⁵, Ripley DP¹⁶, Saxena M¹⁷, Spinner C^{5,18}, McCann GP¹⁹, Moss AJ¹⁹, Parker E¹⁹, Borgmann S²⁰,
8 Tessitore E²¹, Rieg S²², Kearney MT²³, Byrom-Goulthorp R²³, Hower M²⁴, Al-Ali AK²⁵, Alshehri AM²⁶, Alnafie
9 AN²⁷, Alshahrani M²⁸, Almubarak YA²⁹, Al-Muhanna FA³⁰, Al-Rubaish AM³⁰, Hanses F³¹, Shore AC³², Ball C³²,
10 Anning CM³², Rüttrich MM³³, Nierop PR³⁴, Vehreschild MJGT³⁵, Heymans SRB³⁶⁻³⁸, Henkens MTHM³⁶, Raafs
11 AG³⁶, Lanznaster J³⁹, Kopylov PY⁴⁰, Blagova OV⁴¹, Wille K⁴², Pinto YM⁴³, Offerhaus JA⁴³, Bleijendaal H^{43,44},
12 Piepel C⁴⁵, ten Berg JM⁴⁶, Bor WL⁴⁶, Maarse M⁴⁶, Römmele C⁴⁷, Tio RA^{48,49}, Sturkenboom NH⁴⁸, Tometten L⁵⁰,
13 den Uil CA^{12,13}, Scholte NTB¹², Groenendijk AL⁵¹, Dolff S⁵², Zijlstra LE⁵³, Hilt AD⁵³, von Bergwelt-Baildon M⁵⁴-
14 ⁵⁶, Groenemeijer BE⁵⁷, Merle U⁵⁸, van der Zee PM⁵⁹, van Beek EA⁵⁹, Rothfuss K⁶⁰, Tjong FVY^{43,61,62}, van der
15 Lingen ACJ⁶¹, Kolk MZH⁴³, Isberner N⁶³, Monraats PS⁶⁴, Magro M⁶⁴, Hermans WRM⁶⁴, Kochanek M^{65,66}, Captur
16 G^{9,67}, Thomson RJ^{68,69}, Nadalin S⁷⁰, Linssen GCM⁷¹, Veneman T⁷², Zaal R⁷³, Degenhardt C⁷⁴, Martens FMAC⁷⁵,
17 Badings EA⁷⁵, Strauss R⁷⁶, Zaman AG⁷⁷, Alkhalil M⁷⁸, Grüner B⁷⁹, Haerkens-Arends HE⁸⁰, Eberwein L⁸¹, Dark
18 P⁸², Lomas D⁸², Lyons C⁸², vom Dahl J⁸³, Verschure DO⁸⁴, Hellwig K⁸⁵, Mosterd A⁸⁶, Rauschnig D⁸⁷, van der
19 Heijden DJ⁸⁸, Neufang M⁸⁹, van Hessen M⁹⁰, Raichle C⁹¹, Montagna L⁹², Mazzilli SG⁹³, Bianco M⁹⁴, Schultheis
20 B⁹⁵, Shafiee A⁹⁶, Hedayat B⁹⁷, Saneei E⁹⁸, Porhosseini H⁹⁹, Jensen B¹⁰⁰, Gabriel L¹⁰¹, Er AG¹⁰², Kietselaer
21 BLJH¹⁰³, Schubert J¹⁰⁴, Timmermans P Jr¹⁰⁵, Messiaen P^{106,107}, Friedrichs A¹⁰⁸, van den Brink FS¹⁰⁹, Woudstra
22 P¹⁰⁹, Trauth J¹¹⁰, Ribeiro MIA¹¹¹, de With K¹¹², van der Linden MMJM¹¹³, Kielstein JT¹¹⁴, Macías Ruiz R¹¹⁵,
23 Guggemos W¹¹⁶, Hellou E¹¹⁷, Markart P¹¹⁸, van Kesteren HAM¹¹⁹, Heigener D¹²⁰, de Vries JK¹²¹, Stieglitz S¹²²,
24 Baltazar Ferreira J¹²³, Voigt J¹²⁴, van de Watering DJ¹²⁵, Milovanovic M¹²⁶, Redón J^{127,128}, Forner MJ^{127,128}, Rüdell
25 J¹²⁹, Wu KW¹³⁰, Nattermann J¹³¹, Veldhuis LI¹³², Westendorp ICD¹³³, Riedel C¹³⁴, Kwakkel-van Erp JM¹³⁵, van
26 Ierssel S¹³⁶, van Craenenbroeck EM¹³⁷, Walter L¹³⁸, de Sutter J^{139,140}, Worm M¹⁴¹, Drost JT¹⁴², Kaplan R¹⁴²,
27 Moriarty A¹⁴³, Salah R¹⁴⁴, Charlotte N¹⁴⁵, van Boxem AJM¹⁴⁶, Dorman HGR¹⁴⁷, Reidinga AC¹⁴⁸, van der Meer
28 P¹⁴⁹, Wierda E⁶², van Veen HPA¹⁵⁰, Delsing CE¹⁵¹, Meijs MFL¹⁵², van de Wal RMA¹⁵³, Weytjens C¹⁵⁴,
29 Hermanides RS¹⁵⁵, Emans ME¹⁵⁶, al-Windy NY¹⁵⁷, Koning AMH¹⁵⁸, Schellings DAAM¹⁵⁹, Antonio RL¹⁶⁰,
30 Bucciarelli-Ducci C¹⁶¹, Caputo M^{162,163}, Westendorp PHM¹⁶⁴, Kuijper AFM¹⁶⁵, van Ofwegen-Hanekamp CEE¹⁶⁶,

1 Persoon AM¹⁶⁷, Seelig J¹⁶⁸, van der Harst P¹, Siebelink HJ⁵³, van Smeden M², Williams S¹⁶⁹, Pilgram L¹⁷⁰, van
2 Gilst WH¹⁷¹, Tieleman RG¹⁷², Williams B^{6,9}, Asselbergs FW^{1,7,9}.

3

4 **Collaborators**

5 Alling TE¹, Handgraaf S²¹, Gognieva DG⁴⁰, Mesitskaya DF¹⁷³, van der Graaf M¹², Ruiten AH¹², Pölkerman BC⁵⁷,
6 Jansen SE⁵⁷, Selder JL^{43,61}, Pieterse-Rots A⁷¹, Kuipers-Elferink L⁷¹, van der Sluis A⁷⁵, van Eck JWM⁸⁰, Gevers
7 RMM⁸⁰, van Dalen DH⁸⁰, Lensink E⁸⁴, Bunschoten P⁸⁶, van Doorn JL⁸⁶, Knufman N⁸⁸, van Marrewijk V⁸⁸,
8 Broekman M⁹⁰, Bos M⁹⁰, Perrelli MG⁹², Biolé CA⁹², Hosseini K⁹⁷, Tajdini M¹⁷⁴, Domange JD¹⁰¹, Dormal FD¹⁰¹,
9 Jourdan JD¹⁰¹, Kleikers P¹⁰³, Hessels-Linnemeijer BM¹⁰³, Dekimpe E¹⁰⁵, Janssen A¹⁰⁵, Sousa AIC¹¹¹, Cardoso
10 NM¹¹¹, Tercedor Sánchez L¹¹⁵, Bermúdez Jiménez J¹¹⁵, Koole BAS¹¹⁹, Huisman J¹¹⁹, Kui KK¹²¹, Bruinsma S¹²¹,
11 Kievit CM¹³⁰, van Kempen MJ¹³⁰, Melein AJ¹³³, Koole MAC¹³³, van Poppel A¹³⁵, van Meerbeeck JP¹³⁵, Vlieghe
12 E¹³⁶, ten Kate GL¹³⁶, Heidbuchel H¹³⁷, van de Heyning CM¹³⁷ Willems AM¹³⁹, Meijer EJ¹⁴², Habib A¹⁷⁵,
13 Elshinawy K¹⁷⁵, Vial H¹⁷⁶, Grangeon S¹⁷⁶, Wils AM¹⁴⁷, Jacobs TC¹⁴⁷, Vreugdenhil P¹⁷², Hendriks-van Woerden
14 M¹⁷², van Aken K¹⁴⁹, Hamilton K¹⁴⁹, van Nes CPM⁶², Vonkeman HE¹⁷⁷, Haenen NA¹⁵³, de Bruijn EAW¹⁷⁸,
15 Lemoine I¹⁵⁴, Guclu A¹⁵⁵, Dunnink A¹⁵⁵, den Boer-Penning P¹⁵⁶, Zoet-Nugteren SK¹⁵⁶, Reitsma MJ¹⁵⁸, Broeyer
16 FJF¹⁷⁹, Drost IMJ¹⁵⁹, Reinders S¹⁵⁹, van der Kooi SE¹⁶⁰, Paris FMA¹⁶⁰, Bayraktar-Verver ECE¹⁶⁵, Bosch L¹⁶⁶,
17 Bontje M¹⁶⁶, Pisters R¹⁶⁸, de Vries TAC¹⁶⁸.

18

19 **Affiliations**

20 1. Department of Cardiology, Division of Heart and Lungs, University Medical Center Utrecht, University of
21 Utrecht, Utrecht, the Netherlands

22 2. Julius Center for Health Sciences and Primary Care, University Medical Center Utrecht, Utrecht University,
23 Utrecht, the Netherlands

24 3. The Dutch Network for Cardiovascular Research (WCN), Utrecht the Netherlands

25 4. Department I for Internal Medicine, University Hospital of Cologne, University of Cologne, Cologne, Germany

26 5. German Center for Infection Research (DZIF), Brunswick, Germany

27 6. National Institute for Health University College London Hospitals, London Research Biomedical Research
28 Centre, United Kingdom

29 7. Health Data Research UK and Institute of Health Informatics, University College London, London, United
30 Kingdom

- 1 8. The Hatter Cardiovascular Institute, University College London, London, United Kingdom
- 2 9. Institute of Cardiovascular Science, Faculty of Population Health Sciences, University College London,
- 3 London, United Kingdom
- 4 10. Durrer Center, Netherlands Heart Institute, Utrecht, the Netherlands
- 5 11. Department of Cardiology, Amphia Hospital, the Netherlands
- 6 12. Department of Cardiology, Erasmus MC University Medical Center, Rotterdam, the Netherlands
- 7 13. Department of Intensive Care, Erasmus MC University Medical Center, Rotterdam, the Netherlands
- 8 14. Department of Cardiology, Maasstad Hospital, Rotterdam, the Netherlands
- 9 15. Department of Respiratory and Acute Medicine, Northumbria HealthCare NHS Foundation Trust, Newcastle,
- 10 United Kingdom
- 11 16. Department of Cardiology, Northumbria HealthCare NHS Foundation Trust, Newcastle, United Kingdom
- 12 17. Barts NIHR Biomedical Research Centre, William Harvey Research Institute, Queen Mary University of
- 13 London, United Kingdom
- 14 18. School of Medicine, Technical University of Munich, Department of Internal Medicine II, University
- 15 Hospital rechts der Isar, Munich, Germany
- 16 19. Department of Cardiovascular Sciences, University of Leicester and Cardiovascular Theme, NIHR Leicester
- 17 Biomedical Research Centre, Glenfield Hospital, Leicester, United Kingdom
- 18 20. Department of Infectious Diseases and Infection Control, Ingolstadt Hospital, Ingolstadt, Germany
- 19 21. Department of Cardiology, University Hospital of Geneva, Geneva, Switzerland
- 20 22. Internal Medicine II, Department of Infectious Diseases, Freiburg University Hospital, Freiburg, Germany
- 21 23. Leeds Institute for Cardiovascular and Metabolic Medicine, University of Leeds, Leeds, United Kingdom
- 22 24. Clinic for Pneumology, Infectiology, Internal Medicine and Intensive Care, Hospital Dortmund gGmbH,
- 23 Dortmund, Germany
- 24 25. Department of Clinical Biochemistry, King Fahd Hospital of the University, Imam Abdulrahman Bin Faisal
- 25 University, Alkhobar, Saudi Arabia
- 26 26. Department of Cardiology, King Fahd Hospital of the University, Imam Abdulrahman Bin Faisal University,
- 27 Alkhobar, Saudi Arabia
- 28 27. Department of Pathology, King Fahd Hospital of the University, Imam Abdulrahman Bin Faisal University,
- 29 Alkhobar, Saudi Arabia

- 1 28. Department of Emergency Medicine, King Fahd Hospital of the University, Imam Abdulrahman Bin Faisal
- 2 University, Alkhobar, Saudi Arabia
- 3 29. Department of Critical Care, King Fahd Hospital of the University, Imam Abdulrahman Bin Faisal University,
- 4 Alkhobar, Saudi Arabia
- 5 30. Department of Internal Medicine, King Fahd Hospital of the University, Imam Abdulrahman Bin Faisal
- 6 University, Alkhobar, Saudi Arabia
- 7 31. Emergency Department, University Hospital Regensburg, Regensburg, Germany
- 8 32. NIHR Exeter Clinical Research Facility, Royal Devon and Exeter Hospital and University of Exeter College
- 9 of Medicine & Health, Exeter, United Kingdom
- 10 33. Department of Internal Medicine II, Hematology and Medical Oncology, University Hospital Jena, Jena,
- 11 Germany
- 12 34. Department of Cardiology, Franciscus Gasthuis, Rotterdam, the Netherlands
- 13 35. Department of Internal Medicine, Infectious Diseases, University Hospital Frankfurt, Goethe University
- 14 Frankfurt, Frankfurt am Main, Germany
- 15 36. Department of Cardiology, Cardiovascular Research Institute Maastricht (CARIM), Maastricht University
- 16 Medical Center, Maastricht, the Netherlands
- 17 37. Department of Cardiovascular Sciences, Centre for Molecular and Vascular Biology, KU Leuven, Belgium
- 18 38. The Netherlands Heart Institute, NL-HI, Utrecht, The Netherlands
- 19 39. Department of Internal Medicine II, Passau Hospital, Passau, Germany
- 20 40. World-Class Research Center Digital biodesign and personalized healthcare, I.M. Sechenov First Moscow
- 21 State Medical University, Sechenov University, Moscow, Russia
- 22 41. Department of Faculty Therapy No. 1 of N.V. Sklifosovsky Institute for Clinical Medicine, I.M. Sechenov
- 23 First Moscow State Medical University, Sechenov University, Moscow, Russia
- 24 42. University of Bochum, University Clinic for Hematology, Oncology, Hemostaseology and Palliative Care,
- 25 Minden, Germany
- 26 43. Amsterdam University Medical Center, University of Amsterdam, Heart Center; Department of Clinical and
- 27 Experimental Cardiology, Amsterdam Cardiovascular Sciences, Amsterdam, the Netherlands
- 28 44. Amsterdam University Medical Center, University of Amsterdam, Department of Clinical Epidemiology,
- 29 Biostatistics & Bioinformatics, Amsterdam, the Netherlands
- 30 45. Klinikum Bremen-Mitte, Department of Internal Medicine I, Bremen, Germany

- 1 46. Department of Cardiology, St. Antonius Hospital, Nieuwegein, the Netherlands
- 2 47. Department of Gastroenterology, University Hospital Augsburg, Augsburg, Germany
- 3 48. Department of Cardiology, Catharina Hospital, Eindhoven, the Netherlands
- 4 49. Department of Educational Development and Research in the Faculty of Health, Medicine and Life Sciences,
5 Catharina Hospital, Eindhoven, the Netherlands
- 6 50. Department of Gastroenterology and Infectiology, Hospital Ernst-von-Bergmann, Potsdam, Germany
- 7 51. Department of Medical Microbiology and Infectious Diseases, Erasmus MC, University Medical Center,
8 Rotterdam, the Netherlands
- 9 52. Department of Infectious Diseases, University Hospital Essen, University Duisburg Essen, Essen, Germany
- 10 53. Department of Cardiology, HeartLungCenter, Leiden University Medical Center, Leiden, the Netherlands
- 11 54. Department of Internal Medicine III, Ludwig Maximilians University, Munich, Germany
- 12 55. German Cancer Consortium (DKTK), partner site Munich, Munich, Germany
- 13 56. Bavarian Center for Cancer Research (BZKF), Munich, Germany
- 14 57. Department of Cardiology, Gelre Hospital Apeldoorn, Apeldoorn, the Netherlands
- 15 58. Department of Gastroenterology and Infectiology, Heidelberg University Hospital, Heidelberg, Germany
- 16 59. Department of Cardiology, St. Jansdal Hospital, Harderwijk, the Netherlands
- 17 60. Robert-Bosch Hospital, Department of Gastroenterology, Hepatology and Endocrinology, Stuttgart, Germany
- 18 61. Department of Cardiology, Vrije Universiteit Amsterdam, Amsterdam Cardiovascular Sciences, Amsterdam,
19 the Netherlands
- 20 62. Department of Cardiology, Dijklander Hospital, Hoorn, the Netherlands
- 21 63. Department of Internal Medicine II, Division of Infectious Diseases, University Hospital Würzburg,
22 Würzburg, Germany
- 23 64. Department of Cardiology, Elizabeth-TweeSteden Hospital, Tilburg, the Netherlands
- 24 65. Division of Infectious Diseases, Department I of Internal Medicine, University Hospital of Cologne,
25 University of Cologne, Cologne, Germany
- 26 66. German Center for Infection Research, Partner Site Bonn-Cologne, Cologne, Germany
- 27 67. Royal Free London NHS Foundation Trust, London, United Kingdom
- 28 68. William Harvey Research Institute, Queen Mary University of London, United Kingdom
- 29 69. Department of Intensive Care Medicine, Royal Free Hospital, Royal Free London NHS Foundation Trust,
30 London, United Kingdom

- 1 70. Department of General, Visceral and Transplant Surgery, University Hospital Tübingen, Tübingen, Germany
- 2 71. Department of Cardiology, Hospital Group Twente, Almelo, the Netherlands
- 3 72. Department of Intensive Care, Hospital Group Twente, Almelo, the Netherlands
- 4 73. Department of Pulmonology, Hospital Group Twente, Almelo, the Netherlands
- 5 74. Municipal Hospital Karlsruhe, Karlsruhe, Germany
- 6 75. Department of Cardiology, Deventer Hospital, Deventer, the Netherlands
- 7 76. Medical Clinic I, University Hospital Erlangen, Erlangen, Germany
- 8 77. Department of Cardiology, Freeman Hospital and Newcastle University, Newcastle upon Tyne NHS
9 Foundation Trust, United Kingdom
- 10 78. Department of Cardiothoracic Services, Freeman Hospital and Newcastle University, Newcastle upon Tyne
11 NHS Foundation Trust, United Kingdom
- 12 79. University Hospital Ulm, Division of Infectious Diseases, Clinic of Internal Medicine III
- 13 80. Department of Cardiology, Jeroen Bosch Hospital, 's-Hertogenbosch, the Netherlands
- 14 81. 4th Department of Internal Medicine, Hospital Leverkusen gGmbH, Leverkusen, Germany
- 15 82. Intensive Care Department, Salford Royal NHS Foundation Trust, Salford, United Kingdom
- 16 83. Division of Cardiology, Hospital Maria Hilf Mönchengladbach, Mönchengladbach, Germany
- 17 84. Department of Cardiology, Zaans Medical Center, Zaandam, The Netherlands
- 18 85. Department of Neurology, Katholisches Klinikum Bochum, Ruhr University Bochum, Bochum, Germany
- 19 86. Department of Cardiology, Meander Medical Center, Amersfoort, the Netherlands
- 20 87. Bundeswehr Central Hospital, Koblenz, Germany
- 21 88. Department of Cardiology, Haaglanden Medical Center, the Hague, the Netherlands
- 22 89. Evangelical City Hospital Saarbrücken, Saarbrücken, Germany
- 23 90. Department of Cardiology, Groene Hart Hospital, Gouda, the Netherlands
- 24 91. Tropical Clinic Paul-Lechler Hospital Tübingen, Tübingen, Germany
- 25 92. Department of Cardiology, A.O.U. San Luigi Gonzaga, Orbassano, Turin, Italy
- 26 93. Electrophysiology Unit, Department of Cardiology, A.O.U. San Luigi Gonzaga, Orbassano, Turin, Italy
- 27 94. Intensive Coronary Care Unit, Department of Cardiology, A.O.U. San Luigi Gonzaga, Orbassano, Turin, Italy
- 28 95. Department of Hematology and Oncology, Marien Hospital Herne, University of Bochum, Herne, Germany
- 29 96. Department of Cardiovascular Research, Tehran Heart Center, Cardiovascular Diseases Research Institute,
30 Tehran University of Medical Sciences, Tehran, Iran

- 1 97. Department of Cardiology, Tehran Heart Center, Cardiovascular Diseases Research Institute, Tehran
- 2 University of Medical Sciences, Tehran, Iran
- 3 98. Department of Nursing, Tehran Heart Center, Cardiovascular Diseases Research Institute, Tehran University
- 4 of Medical Sciences, Tehran, Iran
- 5 99. Department of Interventional Cardiology, Tehran Heart Center, Cardiovascular Diseases Research Institute,
- 6 Tehran University of Medical Sciences, Tehran, Iran
- 7 100. Department of Gastroenterology, Hepatology and Infectious Diseases, University Hospital Düsseldorf,
- 8 Heinrich-Heine-University, Düsseldorf, Germany
- 9 101. Department of Cardiology, CHU UCL Namur site Godinne, Université Catholique de Louvain, Yvoir,
- 10 Belgium
- 11 102. Department of Infectious Diseases and Clinical Microbiology, Hacettepe University School of Medicine,
- 12 Ankara, Turkey
- 13 103. Department of Cardiology, Zuyderland Medical Center, Heerlen, the Netherlands
- 14 104. Department of Internal Medicine, Hematology and Oncology, Elbland Hospital Riesa, Riesa, Germany
- 15 105. Department of Cardiology, Heart Center Hasselt, Jessa Hospital, Hasselt, Belgium
- 16 106. Department of Infectious Diseases & Immunity, Jessa Hospital, Hasselt, Belgium
- 17 107. Faculty of Medicine and Life Sciences, Hasselt University, Hasselt, Belgium
- 18 108. Department of Internal Medicine I, University Medical Center Schleswig-Holstein, Kiel, Germany
- 19 109. Department of Cardiology, Medical Center Leeuwarden (MCL), Leeuwarden, the Netherlands
- 20 110. Department of Medicine II, Section of Infectious Diseases, Justus-Liebig-University Giessen, Germany,
- 21 member of the German Lung Center (DZL)
- 22 111. Intensive Care Unit, Hospital do Espírito Santo, Évora, Portugal
- 23 112. Division of Infectious Diseases, University Hospital Carl Gustav Carus, Technical University of Dresden,
- 24 Dresden, Germany
- 25 113. Department of Cardiology, Franciscus Vlietland, Schiedam, The Netherlands
- 26 114. Medical Clinic V, Nephrology, Rheumatology, Blood Purification, Academic Teaching Hospital
- 27 Braunschweig, Braunschweig, Germany
- 28 115. Arrhythmias Unit, Department of Cardiology, Hospital Universitario Virgen de las Nieves, Granada, Spain
- 29 116. Munich Clinic Schwabing, Munich, Germany
- 30 117. Department of Cardiology, E.M.M.S Hospital, Nazareth, Israel

- 1 118. Section of Fibrotic Lung Diseases, University Hospital Giessen and Marburg, Giessen Campus, Justus
- 2 Liebig University Giessen, University of Giessen Marburg Lung Center, as well as the Fulda Campus of the
- 3 Medical University of Marburg, Med. Clinic V, Member of German Center for Lung Research Giessen,
- 4 Germany
- 5 119. Department of Cardiology, Admiraal de Ruyter Hospital, Goes, the Netherlands
- 6 120. Agaplesion Diaconia Hospital Rotenburg, Rotenburg, Germany
- 7 121. Department of Internal Medicine, Antonius Hospital, Sneek, the Netherlands
- 8 122. Department of Pneumology, Allergy, Sleep and Intensive Care Medicine, Petrus Hospital Wuppertal,
- 9 University of Witten-Herdecke, Wuppertal, Germany
- 10 123. Department of Cardiology, Hospital Professor Doutor Fernando Fonseca, Amadora, Portugal
- 11 124. St. Josef Hospital Kupferdreh, Essen, Germany
- 12 125. Department of Cardiology, Albert Schweitzer Hospital, Dordrecht, the Netherlands
- 13 126. Malteser Hospital St. Franziskus-Hospital Flensburg, Flensburg, Germany
- 14 127. Department of Internal Medicine, Clinic University Hospital, INCLIVA Health Research Institute, Valencia,
- 15 Spain
- 16 128. Department of Medicine, School of Medicine, University of Valencia, Valencia, Spain
- 17 129. Sophien- and Hufeland Clinic Weimar, Weimar, Germany
- 18 130. Department of Cardiology, van Weel-Bethesda Hospital, Dirksland, the Netherlands
- 19 131. Department of Internal Medicine I, Department of Gastroenterology, Hepatology, Nephrology, Infectiology,
- 20 Endocrinology and Diabetology, University Hospital Bonn, Bonn, Germany
- 21 132. Department of Intensive Care, Rode Kruis Hospital, Beverwijk, the Netherlands
- 22 133. Department of Cardiology, Rode Kruis Hospital, Beverwijk, the Netherlands
- 23 134. Helios Hospital Pirna, Pirna, Germany
- 24 135. Department of Pulmonology, Antwerp University Hospital, Edegem, Belgium
- 25 136. Department of General Internal Medicine, Infectious Diseases and Tropical Medicine, Antwerp University
- 26 Hospital, Edegem, Belgium
- 27 137. Department of Cardiology, Antwerp University Hospital, Edegem, Belgium
- 28 138. Hospital St. Joseph-Stift Dresden, Dresden, Germany
- 29 139. Department of Cardiology, AZ Maria Middelaers, Ghent, Belgium
- 30 140. Department of Internal Medicine, Ghent University, Ghent, Belgium

- 1 141. Oberlausitz Hospital, Germany
- 2 142. Department of Cardiology, Saxenburgh Medical Center, Hardenberg, the Netherlands
- 3 143. Craigavon Area Hospital, Southern Care & Social Care Trust Hospitals, Portadown, Northern Ireland
- 4 144. Benha Faculty of Medicine, Benha, Egypt
- 5 145. Department of Cardiology, SSR Val Rosay, Saint Didier au Mont d'Or, France
- 6 146. Department of Pulmonology, Bravis Hospital, Roosendaal, the Netherlands
- 7 147. Department of Cardiology, Bravis Hospital, Roosendaal, the Netherlands
- 8 148. Department of Intensive Care, Martini Hospital, Groningen, the Netherlands
- 9 149. Department of Cardiology, LangeLand Hospital, Zoetermeer, the Netherlands
- 10 150. Department of Pulmonology, Medisch Spectrum Twente, Enschede, the Netherlands
- 11 151. Department of Internal Medicine and Infectious Diseases, Medisch Spectrum Twente, Enschede, the
12 Netherlands
- 13 152. Department of Cardiology, Thorax Center Twente, Medisch Spectrum Twente, Enschede, the Netherlands
- 14 153. Department of Cardiology, Bernhoven Hospital, Uden, the Netherlands
- 15 154. Department of Cardiology, CHVZ, University Hospital Brussels, Jette, Belgium
- 16 155. Department of Cardiology, Isala Hospital, Zwolle, the Netherlands
- 17 156. Department of Cardiology, Ikazia Hospital, Rotterdam, the Netherlands
- 18 157. Department of Cardiology, Gelre Hospital Zutphen, Zutphen, the Netherlands
- 19 158. Department of Gynecology, Amstelland Hospital, Amstelveen, the Netherlands
- 20 159. Department of Cardiology, Slingeland Hospital Doetinchem, the Netherlands
- 21 160. Department of Cardiology, Treant Zorggroep, Emmen, the Netherlands
- 22 161. NIHR Bristol Cardiovascular Biomedical Research Centre, Cardiac Magnetic Resonance Department,
23 Bristol Heart Institute, University Hospitals Bristol NHS Foundation Trust, Bristol, United Kingdom
- 24 162. University Hospitals Bristol and Weston NHS Foundation Trust, Bristol, United Kingdom
- 25 163. Bristol Medical School, University of Bristol, Bristol, United Kingdom
- 26 164. Department of Cardiology, Beatrix Hospital, Gorinchem, the Netherlands
- 27 165. Department of Cardiology, Spaarne Gasthuis, Haarlem, the Netherlands
- 28 166. Department of Cardiology, Diaconessenhuis, Utrecht, the Netherlands
- 29 167. Department of Pulmonology, Diaconessenhuis, Utrecht, the Netherlands
- 30 168. Department of Cardiology, Rijnstate Hospital, Arnhem, the Netherlands

- 1 169. Barts Life Sciences, Barts Health NHS Trust, London, United Kingdom
- 2 170. Department of Internal Medicine, Hematology and Oncology, Goethe University Frankfurt, Frankfurt,
- 3 Germany
- 4 171. Department of Cardiology, University Medical Center Groningen, Groningen, the Netherlands
- 5 172. Department of Cardiology, Martini Hospital, Groningen, the Netherlands
- 6 173. Department of Cardiology, Functional and and Ultrasound Diagnostics of N.V. Sklifosovsky Institute for
- 7 Clinical Medicine, I.M. Sechenov First Moscow State Medical University, Sechenov University, Moscow, Russia
- 8 174. Department of Emergency, Tehran Heart Center, Cardiovascular Diseases Research Institute, Tehran
- 9 University of Medical Sciences, Tehran, Iran
- 10 175. Department of Cardiology, One Day Surgery Hospital, Cairo, Egypt
- 11 176. COVID-19 Unit, SSR Val Rosay, Saint Didier au Mont d'Or, France
- 12 177. Department of Rheumatology and Clinical Immunology, Medisch Spectrum Twente, Enschede, the
- 13 Netherlands
- 14 178. Research Department, Bernhoven Hospital, Uden, the Netherlands
- 15 179. Department of Cardiology, Amstelland Hospital, Amstelveen, the Netherlands