

1 **Clinical presentation, disease course and outcome of COVID-19 in**  
2 **hospitalized patients with and without pre-existing cardiac disease – a**  
3 **cohort study across eighteen countries**

4

5 **Authors:**

6 CAPACITY-COVID collaborative consortium and LEOSS Study Group\*

7 \*Authors listed at the end of the manuscript

8

9

10

11

12

13

14

15

16

17

18

19

20

21

22

23

24

25 **Word count (max 5000):** 4784

26 **Corresponding author**

27 Prof. Dr. Folkert W. Asselbergs

28 E-mail: [f.w.asselbergs@umcutrecht.nl](mailto:f.w.asselbergs@umcutrecht.nl)

29 Department of Cardiology, Division Heart & Lungs | University Medical Center Utrecht

30 Room E03.511 | P.O. Box 8550 | 3508 GA Utrecht, The Netherlands |

31 T +31 8875561 76 | Pager 4711 via +31 887555555 | F +31 88755542

32

1    **Abstract (250 max)**

2    *Aims* Patients with cardiac disease are considered high risk for poor outcomes following hospitalization with  
3    COVID-19. The primary aim of this study was to evaluate heterogeneity in associations between various heart  
4    disease subtypes and in-hospital mortality.

5

6    *Method and results* We used data from the CAPACITY-COVID registry and LEOSS study. Multivariable  
7    Poisson regression models were fitted to assess the association between different types of pre-existent heart  
8    disease and in-hospital mortality. 16,511 patients with COVID-19 were included (21.1% aged 66 – 75 years;  
9    40.2% female) and 31.5% had a history of heart disease. Patients with heart disease were older, predominantly  
10   male and often had other comorbid conditions when compared to those without. Mortality was higher in patients  
11   with cardiac disease (29.7%; n=1545 versus 15.9%; n=1797). However, following multivariable adjustment this  
12   difference was not significant (adjusted risk ratio (aRR) 1.08 [95% CI 1.02 – 1.15; p-value 0.12 (corrected for  
13   multiple testing)]. Associations with in-hospital mortality by heart disease subtypes differed considerably, with  
14   the strongest association for heart failure aRR (1.19 [1.10 – 1.30]; p-value <0.018) particularly for severe  
15   NYHA III/IV) heart failure (aRR 1.41 [95% CI 1.20 – 1.64; p-value <0.018]. None of the other heart disease  
16   subtypes, including ischemic heart disease, remained significant after multivariable adjustment. Serious cardiac  
17   complications were diagnosed in <1% of patients.

18

19   *Conclusion* Considerable heterogeneity exists in the strength of association between heart disease subtypes and  
20   in-hospital mortality. Of all patients with heart disease, those with heart failure are at greatest risk of death when  
21   hospitalized with COVID-19. Serious cardiac complications are rare.

22

23    **Key words**

24    COVID-19; SARS-CoV-2; epidemiology; patient registry; comorbidity; cardiovascular disease

25

26

27

28

29

30

## 1 **Introduction**

2 Coronavirus disease 2019 (COVID-19) has rapidly spread across the globe since December 2019, leading to  
3 more than 175 million confirmed cases and 3.5 million fatalities as of the 18<sup>th</sup> of June 2021.<sup>1</sup> Although the  
4 disease is not as lethal (case fatality ratio (CFR)  $\sim 0.3 - 1\%$ )<sup>2,3</sup> as the Middle-East respiratory syndrome (MERS;  
5 CFR  $\sim 35\%$ )<sup>4</sup> and the severe acute respiratory syndrome (SARS; CFR 14 – 15%)<sup>5</sup>, it has become clear that  
6 morbidity and mortality is much higher than pandemic influenza (CFR 0.1%)<sup>6,7</sup>, especially among the elderly<sup>3</sup>.

7 Studies show that a significant number of patients who develop severe symptoms of COVID-19 have  
8 underlying comorbidities, of which cardiovascular disease (CVD) is reported in 10 – 30% of inpatients in  
9 Western-European and American cohorts.<sup>8-11</sup> Patients with pre-existing cardiac disease have consistently been  
10 reported to be at increased risk of an unfavorable outcome both among the general population and those  
11 requiring hospitalization when compared to patient without these conditions.<sup>8,12</sup> In one of the largest cohort  
12 studies of hospitalized patients thus far (n=20,133), chronic cardiac disease was significantly associated with  
13 mortality (adjusted HR 1.16; 95% confidence interval (CI) 1.08 – 1.24).<sup>8</sup> Another study by Fried et al.  
14 (n=11,721) across 38 states in the United States, found an adjusted odds ratio (aOR) of 1.22 (95% CI 1.06 –  
15 1.41) and 1.44 (95% CI 1.27 – 1.63) for mechanical ventilation and death respectively related to cardiac  
16 disease.<sup>11</sup> The Chinese Center for Disease Control report a CFR five times higher among those with CVD  
17 compared to patients without any comorbidities.<sup>13</sup> These observations are in line with previous studies among  
18 patients with influenza and other respiratory tract infections.<sup>14-15</sup>

19 Previous studies have predominantly evaluated the association between having any chronic cardiac  
20 disease and COVID-19 related mortality, where all cardiac disease subtypes are analyzed together.<sup>8,11,12</sup>  
21 However, from a clinical point of view, it is likely that not all cardiac diseases mediate a similar risk. Increasing  
22 our understanding of the clinical course of COVID-19 in patients across different heart disease subtypes is of  
23 pivotal importance. Firstly, it can provide guidance for health care professionals in the management of these  
24 patients and would better inform shielding guidelines. Secondly, it can bring some clarity for patients,  
25 concerned about how their own cardiac disease influences their risk from COVID-19.<sup>16</sup> Reducing these  
26 concerns might also have a positive impact on health care seeking behavior during the pandemic, diminishing  
27 the detrimental collateral damage the outbreak has provoked in patients with heart disease who are afraid of  
28 attending hospitals.<sup>17</sup>

29 The aim of the current study was to investigate whether there is heterogeneity in the strength of  
30 association per heart disease subtype and in-hospital mortality. Furthermore, we describe the disease trajectory

1 of COVID-19 in hospitalized patients with- and without pre-existing cardiac disease, from documentation at  
2 hospital admission to discharge or death, including the prevalence of cardiac complications.

#### 4 **Methods**

##### 6 *Study design and setting*

7 For this study we used data collected in the CAPACITY-COVID registry ([www.capacity-covid.eu](http://www.capacity-covid.eu)) and the  
8 Lean Open Survey on SARS-CoV-2 infected patients (LEOSS) study ([www.LEOSS.net](http://www.LEOSS.net)).

9 CAPACITY-COVID is a multinational patient registry specifically established to determine the role of  
10 CVD in the COVID-19 pandemic (NCT04325412).<sup>18</sup> All adult patients ( $\geq 18$  years) hospitalized with confirmed  
11 or highly suspected COVID-19 are eligible for inclusion in the registry. The extent and scope of inclusion varies  
12 per site, depending on local resources and preference. A majority of participating centers (n=56) use a non-  
13 selective inclusion, i.e., every adult patient with (highly suspected) COVID-19 or a random sample is included  
14 in the registry, and 18 centers applied a selective inclusion of only patients for whom a cardiologist has been  
15 consulted, only patients with a history of CVD or cardiovascular risk factors or a selection based on department  
16 of admission i.e., only patients admitted to the ward or intensive care unit (ICU). Since the launch of the registry  
17 in March 2020, 74 centers across 13 countries have joined the consortium.

18 Within CAPACITY-COVID, the ISARIC core case report form<sup>19</sup> has been used as the core data set  
19 which was extended with ~400 additional variables to capture in-depth information regarding cardiovascular  
20 history, the use of cardiovascular medications, cardiac investigations such as ECG and echocardiography and  
21 cardiovascular outcomes. The data dictionary is available online ([www.capacity-covid.eu](http://www.capacity-covid.eu)). Only data generated  
22 during routine clinical care is collected and patients do not undergo any additional investigations for the purpose  
23 of this registry. Data is collected in a REDCap database after pseudonymization which is managed by the  
24 University Medical Center Utrecht, Utrecht, the Netherlands.

25 Variable definitions handled in CAPACITY-COVID are incorporated in the REDCap Case Report  
26 Form (CRF) and can be found online among the study documents at: [https://capacity-covid.eu/for -  
27 professionals/](https://capacity-covid.eu/for-professionals/). For the registration of cardiac complication, the diagnostic criteria of the European Society of  
28 Cardiology (ESC) guidelines for myocarditis<sup>20</sup>, pericarditis<sup>21</sup> endocarditis<sup>22</sup> and acute coronary syndrome<sup>23</sup> were  
29 incorporated to minimize heterogeneity in the adjudication of these events. For arrhythmia's, the  
30 ACC/AHA/HRS 2006 key data elements and definitions for electrophysiological studies and procedures was

1 used.<sup>24</sup> In absence of a definition, a clinical diagnosis as indicated in the Electronic Health Record (EHR) was  
2 handled.

3 LEOSS is a European multicenter cohort study established in March 2020, collecting information on  
4 both hospitalized and ambulant patients with laboratory confirmed COVID-19. A detailed description of the  
5 study design has been previously reported.<sup>25</sup> In short, patients of all ages can be included in LEOSS. Case  
6 collection is anonymized, realized by amongst other the absence of any variables containing directly identifying  
7 information in the case report form, only a small subset of variables associated with a high risk of re-  
8 identification and the categorized collection of continuous variables (such as age).<sup>26</sup> The CRF of LEOSS can be  
9 provided upon request. Currently centers from Austria, Belgium, Bosnia and Herzegovina, Germany, Italy,  
10 Latvia Spain, Switzerland, Turkey and the United Kingdom contribute data to the registry. The data collection is  
11 coordinated by the University Hospital of Cologne in Germany.

### 12 13 *Study population*

14 We excluded patients only treated in an ambulatory setting, children (age <18 years) and patients for which the  
15 region of inclusion, COVID-19 status, admission date, history of cardiac disease, age, sex or outcome were  
16 unconfirmed. All hospitalized patients aged  $\geq 18$  years with a laboratory confirmed SARS-CoV-2 infection  
17 registered between March and May 2021 were included. A list of all participating sites that contributed with  
18 data to the current study is provided in **Table S1**. The informed consent procedure varied per study site,  
19 following local and national rules and regulations during the pandemic. Within CAPACITY-COVID, a majority  
20 of participating sites handled an opt-out approach, where patients received written information during or after  
21 hospital admission. For sites in the UK, informed consent was not required under emergency legislation during  
22 the pandemic. Inclusion into LEOSS did not require informed consent due to anonymous case collection.  
23 Medical ethics approval was obtained nationally or independently for each participating site complying with the  
24 Declaration of Helsinki.

### 25 26 *Statistical analysis*

27 Continuous variables in CAPACITY-COVID were categorized to align with LEOSS prior to merging the  
28 datasets from these two different sources. Multiple imputation (R package *mice*) was performed to deal with  
29 missingness across baseline variables required for the regression models through the generation of 10 imputed  
30 datasets. The following variables were included in the multiple imputation model: all variables indicated with an

1 asterisk in **Table 1-3**, and furthermore presence of pre-existing cardiac disease, arrhythmia/conduction disorder,  
2 heart failure, coronary artery disease (CAD), valvular heart disease, month and year of hospital admission,  
3 extent of inclusion (all/random sample vs. selected inclusion as described above), cohort (CAPACITY-COVID  
4 vs. LEOSS) and region of inclusion (Central Europe, Netherlands/Belgium, Middle – East, Southern-Europe  
5 and the United Kingdom). Baseline variables with >40% missingness were excluded from further analysis.

6 For the main analyses, multivariable modified Poisson models with robust standard errors were used to  
7 estimate the association between a history of cardiac disease and in-hospital mortality across the pooled ten  
8 imputed datasets. Heterogeneity in associations was also determined across various clinically relevant  
9 subgroups including age ( $\leq 65$  and  $>65$ ), sex, body mass index (BMI) ( $<30$  and  $\geq 30$ ), diabetes, hypertension,  
10 chronic kidney disease (CKD) and chronic obstructive pulmonary disease (COPD). In the secondary analyses,  
11 associations between pre-defined specific types of heart disease and the in-hospital mortality were determined.  
12 The following heart disease subtypes were analyzed: arrhythmias/conduction disorders, CAD, myocardial  
13 infarction (MI), heart failure and valvular heart disease. To be able to determine differences in the association  
14 between the pre-defined cardiac disease subtypes and in-hospital mortality in adults versus the elderly, analyses  
15 were also performed in patients  $\leq 65$  years and  $>65$  years. The cut-off was set at 65 since most COVID-19  
16 vaccination strategies in Europe have defined the elderly as those  $>65$  years of age.<sup>27</sup>

17 All analyses were adjusted for the following covariates: age, sex, BMI, diabetes, hypertension, CKD,  
18 COPD and geographic region of inclusion (see above). For the sensitivity analyses we excluded patients  
19 included by centers handling a selective inclusion strategy as previously outlined. In addition, we assessed the  
20 direction and magnitude of the associations based on registry of inclusion (CAPACITY vs. LEOSS), next to  
21 fitting models in the dataset of the combined cohorts.

22 Logistic regression on the non-imputed dataset was used to identify association of the most prevalent  
23 COVID-19 symptoms at presentation and eight different age categories in the total cohort and after stratification  
24 on pre-existent cardiac disease. Due to low numbers of young patients with a history of cardiac disease, the four  
25 lowest age categories were merged in the stratified analyses (18 – 55 years).

26 Results of the modified Poisson regression models are reported as risk ratios (RR) with 95%  
27 confidence intervals (CI) and the logistic regression models as odds ratios (ORs) with 95% CI's. Statistical  
28 significance was set at an alpha of 5% and all hypothesis tests were two-sided. The regression analyses were  
29 corrected for multiple testing using the Holm-Bonferroni method. Continuous variables were summarized as

1 means (SD) or medians [IQR] and categorical variables as counts (%). All analyses were performed in R Studio  
2 (version 1.3.959, Vienna, Austria).

3

## 4 **Results**

5

### 6 *Baseline characteristics*

7 In total, 20,954 patients had been included in CAPACITY-COVID or LEOSS between March and May 2021.  
8 After applying exclusion criteria, 16,511 patients from eighteen countries were retained for the final analysis  
9 (**Figure S1**). Baseline characteristics stratified by the presence of pre-existing cardiac disease and age are  
10 summarized in **Table 1**.

11 Most patients were aged between 76 – 85 (n=3,720; 22.5%), and more than half the cohort was  
12 composed of individuals >65 years (n=8,861; 53.7%). Most patients were white (n=12,120; 84.5%),  
13 predominantly male (n=9,864; 59.8%), and 68.0% (n=7,080) had a BMI >25 kg/m<sup>2</sup>. At baseline, almost one third  
14 of patients (n=5,198; 31.5%) had pre-existing heart disease of which cardiac arrhythmias/conduction disorders  
15 (n=2,503; 15.3%) and CAD (n=2,420; 14.8%) were most common (**Table S2**). In total, 1,314 patients (8.1%)  
16 had been previously diagnosed with heart failure. Other frequent major comorbidities were diabetes (n=4,031;  
17 24.9%) and CKD (n=2,196; 13.5%).

18 Compared to patients without a history of cardiac disease, patients with pre-existing heart disease were  
19 generally older, more often male (63.6% vs. 58.1%) and had a higher burden of cardiovascular risk factors and  
20 other comorbid conditions at baseline (**Table 1**). Detailed phenotyping of underlying pre-existing cardiac  
21 diseases of patients registered in CAPACITY-COVID, including arrhythmias, conduction disorders, type of  
22 ischemic- and valvular heart disease are outlined in **Table S3**. To evaluate heterogeneity across datasets,  
23 baseline characteristics were also stratified by the cohort of origin (CAPACITY-COVID vs. LEOSS; **Table S2**).  
24 Patients in LEOSS tended to be younger with an overall higher prevalence of heart disease.

25

### 26 *Complaints at admission*

27 The median duration from the onset of symptoms to hospital admission was 6 days [IQR 2 – 9]. Fever, cough  
28 and shortness of breath were the most common symptoms at presentation reported in 54.9%, 51.8% and 49.8%  
29 of patients respectively (**Table 2**). The odds of having these symptoms varied across age, with fever, cough and  
30 dyspnea being reported less frequently in the younger (<45 years) and older (>65 years) age groups (**Figure S2**).

1 The probability of experiencing a sore throat, anosmia and chest pain declined with age, while fatigue was  
2 reported more often with increasing age. Heterogeneity in complaints and vital signs at admission was also  
3 assessed by stratification by cohort of inclusion (CAPACITY-COVID vs. LEOSS; **Table S4**). Of symptoms  
4 overlapping with CVD, chest pain was most common, reported by 9.2% of patients. Less than five percent of  
5 patients experienced (pre) syncope, palpitations, orthopnea or peripheral edema (**Table S4**). After stratification  
6 by age, the pattern of complaints did not differ between patients with and without a history of cardiac disease  
7 (**Figure S3**).

8

### 9 *Outcomes*

10 The median duration of hospital admission was 9 [5 – 18] days (**Table 3**). More than one in four patients were  
11 admitted to a critical care unit (n=3916; 27.6%) with a median length of stay of 12 [6 – 23] days. The proportion  
12 of patients admitted to a critical care unit increased with age until 75 years. Patients aged >75 years were  
13 predominantly treated on the ward (**Table S5**). Overall, the comorbidity burden among patients on a critical care  
14 unit was lower than for patients admitted to the ward only (**Table S5**). Patients that were admitted to a critical  
15 care unit tended to be more ill at admission based on vitals and laboratory values at hospital admission (**Table**  
16 **S6**). During hospital admission 20.2% (n=3342) of patients died. Mortality was strongly related to age, with a  
17 mortality of 0.8% (n=2) in patients aged 18-25 years and 39.4% (n=652) in patients aged >85 years (**Table S7**).  
18 Oxygen saturation levels were lower at admission in those who died, while the levels of inflammatory markers  
19 (C-reactive protein and total white blood cell count) were higher (**Table S8**). In patients with cardiac disease  
20 29.7% (n=1545) died during their hospital admission versus 15.9% (n=1797) in patients without chronic heart  
21 disease (**Table 3**). In addition to heart disease, other comorbidities were also more prevalent in patients that died  
22 during their hospital admission (**Table S7**).

23

### 24 *Cardiac and thromboembolic complications*

25 During hospitalization, serious cardiac complications including myocarditis, MI and new onset heart failure  
26 were diagnosed in 0.2% (n=37), 0.6% (n=95) and 1.2% (n=197) of patients respectively (**Table 3**). Other  
27 serious cardiac complications registered only in CAPACITY-COVID, including malignant ventricular  
28 arrhythmias, endocarditis and pericarditis were also uncommonly diagnosed (<1% of patients; **Table S9**). MI  
29 and new onset heart failure was diagnosed more frequently in patients with pre-existing cardiac disease  
30 compared to those without (**Table 3**). Among thromboembolic complications, pulmonary embolism was most



1 prevalent being diagnosed in 3.5% (n=569) of patients (**Table 3**). All complications occurred more often in  
2 patients admitted to a critical care unit and patients that died in-hospital (**Table S10, S11**), with the difference  
3 being most pronounced for pulmonary embolism, which was diagnosed in 10.5% (n=405) the critically ill vs.  
4 1.4 (n=144) among patients only admitted to the ward. Venous thromboembolic complications were diagnosed  
5 less frequently among patients with a history of heart disease (**Table 3**).

6

#### 7 *Association between prior history of cardiac disease and in-hospital mortality*

8 The multivariable modified Poisson regression model fitted in the total population yielded a non-statistically  
9 significant association between any pre-existing cardiac disease and in-hospital mortality (aRR 1.08 [95% CI  
10 1.02  
11 1.15, p-value 0.12])(**Figure 1**). This association was further explored across different clinically relevant  
12 subgroups (**Table S12**). Apart from age and sex, displaying a trend towards an interaction with prior heart  
13 disease (p-value 0.10 and 0.09 respectively), the subgroup analyses did not reveal any other interactions.  
14 Furthermore, sensitivity analyses by the exclusion of patients included from centers that handled a selective  
15 inclusion (n=707) did not yield any different results (**Table S13**).

16

#### 17 *Association between different pre-existing cardiac comorbidities and in-hospital mortality*

18 To assess heterogeneity in the associations between different types of heart disease and hospital mortality,  
19 modified Poisson regression models were fitted for all pre-specified cardiac disease subgroups. After  
20 multivariable adjustment, the strongest association was found for heart failure and in-hospital mortality (aRR  
21 1.19 [95% CI 1.10 – 1.30; p-value <0.018] and in particular for severe (NYHA III/IV) heart failure (aRR 1.41  
22 [95% CI 1.20 – 1.64; p-value <0.018])(**Figure 1**). For the other heart disease subtypes, including ischaemic heart  
23 disease, no significant associations with in-hospital mortality were found (**Figure 1, Table S14**).

24 Since the elderly (>65 years) and adults with comorbidities are defined as two of the main risk groups  
25 being prioritized in ongoing vaccination campaigns and statistical interaction was established between pre-  
26 existing cardiac disease and age, associations between the various heart disease subtypes and in-hospital  
27 mortality were also determined in patients  $\leq 65$  years and  $>65$  years (**Figure 2**). However, for none of the heart  
28 disease subtypes the interaction with age was found significant. As heterogeneity in treatment intensity may  
29 impact the associations between pre-existing heart disease and in-hospitals, we also performed a separate  
30 analysis in patients admitted only to the wards vs. patients admitted to a critical care unit. A strong interaction

1 was found between having any history of cardiac disease, arrhythmia/conduction disorders, valvular heart  
2 disease and admission to a critical care unit (**Table S15**). The adjusted RR's between these pre-existing heart  
3 conditions and in-hospital mortality overall were lower in patients that had been admitted to a critical care unit  
4 when compared to patients only admitted to the ward.

## 6 **Discussion**

7 A large proportion of patients developing severe COVID-19 have underlying CVD. The aim of this study was to  
8 describe and compare the disease course and outcomes in hospitalized COVID-19 patients with and without pre-  
9 existing cardiac disease. The most important findings of this work are (i) the symptoms of COVID-19 at  
10 presentation are age dependent and do not differ in individuals with and without prior cardiac disease (ii) serious  
11 incident cardiac complications are diagnosed infrequently during hospitalization and are seen more often in  
12 patients with known cardiac disease at baseline (iii) the association between prior heart disease and in-hospital  
13 mortality varies across heart disease subtypes where (iv) heart failure associates most strongly with in-hospital  
14 mortality and (v) there was no association with ischemic heart disease.

15 In line with others<sup>28</sup>, we found that COVID-19 symptoms at admission vary mainly with age with no  
16 evidence that prior cardiac disease influences this relationship or the symptoms. Typical symptoms of COVID-  
17 19 including fever, cough and shortness of breath, were reported less often in the elderly. Overall complaints  
18 mimicking cardiac disease, such as chest pain, palpitations and orthopnea were reported by only a minority of  
19 patients (<10%). In this regard, it is interesting that cardiac-like symptoms such as chest pain and palpitations  
20 have been reported by 17-44% and 20-32% of patients in the 2-3 months after the active infection as part of the  
21 so-called "long COVID" syndrome.<sup>29-32</sup> Whether these complaints are related to cardiovascular involvement in  
22 the convalescent phase of the disease or should predominantly be viewed as an epiphenomenon remains unclear.

23 According to our study, serious cardiac complications are rarely diagnosed during hospitalization with  
24 COVID-19, with a prevalence <2% of patients. To aid interpretation of these numbers it is of interest to relate  
25 them to the occurrence of cardiac complications in patients hospitalized for other (viral) infectious diseases. A  
26 recent large French retrospective cohort study found that the prevalence of MI and atrial fibrillation was lower  
27 in patients with COVID-19 than seasonal influenza with a prevalence of 0.6% vs. 1.1% and 12.4% vs. 15.8%  
28 respectively.<sup>7</sup> Unfortunately, this study did not report the prevalence of any other cardiac complications,  
29 including heart failure and myocarditis. As cardiomyocytes express ACE2<sup>33,34</sup>, the docking receptor of SARS-  
30 CoV-2, it has been speculated that SARS-CoV-2 may infect cardiomyocytes, replicate in cardiac tissue and

1 thereby induce direct myocardial damage. These concerns have also been triggered by the finding that raised  
2 levels of troponin above test-specific upper limits are found in up to one third of patients at hospital  
3 admission.<sup>35,36</sup> Histopathological studies of myocardial tissue in the setting of COVID-19 have been scarce up to  
4 this point. A literature review evaluating findings of 22 studies across 277 post-mortem examinations, found  
5 evidence for myocarditis in <2%.<sup>37</sup> This finding contrasts the results of a number of cardiac magnetic resonance  
6 (CMR) studies evaluating tissue characteristics and function 2 – 3 months after an established SARS-CoV-2  
7 infection.<sup>32,38-40</sup> In the largest study by Kotecha et al. among 148 patients that had a troponin elevation during  
8 hospitalization, non-ischemic myocarditis-like late gadolinium enhancement was found in 26% of patients with  
9 one-third showing signs of active myocarditis.<sup>39</sup> These findings were not associated with left ventricular  
10 dysfunction. In CMR studies conducted predominantly among clinically recovered mildly symptomatic or  
11 asymptomatic cases, up to 60% were described to have raised native T2 times, and which the authors suggested  
12 might be due to ongoing myocardial inflammation.<sup>32,40</sup> Whether these CMR findings are unique to patients that  
13 have been infected with SARS-CoV-2, or also are seen in other (viral) infectious diseases has been poorly  
14 investigated. Evidence of a clear causal relationship between SARS-CoV-2 and myocarditis thereby remains  
15 elusive. It can be speculated that most patients may have troponin elevations secondary to profound hypoxia and  
16 a supply/demand imbalance rather than direct damage due to viral invasion in cardiac tissue.<sup>36</sup> However, the  
17 discrepancy in the limited number of patients diagnosed with cardiac complications during hospitalization and  
18 the significant proportion of patients with abnormal findings in imaging studies is a concern and warrants  
19 further investigation. Cardiac complications may have been missed, due to the overlapping symptomatology  
20 with COVID-19 as well as limited access or performed diagnostic tests.

21 Contrary to cardiac complications, which in our study were rarely diagnosed during hospitalization,  
22 venous thrombosis and thromboembolism are common features of COVID-19, with a prevalence 3-4 times  
23 higher when compared to seasonal influenza.<sup>7</sup> Thromboembolic events are especially common in patients  
24 admitted to the ICU, with pulmonary embolism being diagnosed more than 5 times as often (10.5% vs. 1.4%) in  
25 our cohort compared to patients treated on the ward only. The prevalence of pulmonary embolism in the ICU  
26 population in our study is lower than in studies based on data originating from patients hospitalized in the first  
27 months of the pandemic, that reported a prevalence of up to 20.6%.<sup>41,42</sup> This discrepancy most likely reflects the  
28 implementation of enhanced antithrombotic prophylactic strategies in patients admitted with COVID-19 during  
29 2020 and 2021.<sup>43,44</sup> Interestingly, we observed that thromboembolic complications were less common among

1 patients known with cardiac disease in our cohort. This observation is possibly related to pre-admission use of  
2 anticoagulants for the treatment of pre-existing cardiac conditions. This will be explored in ongoing analyses.

3         Among different heart disease subtypes, heart failure and especially severe heart failure (NYHA  
4 III/IV) was most strongly associated with in-hospital mortality in this study across the spectrum of different  
5 heart disease subtypes. Others have also identified patients with heart failure as one of the groups at particular  
6 risk.<sup>45,46</sup> Among 6,439 hospitalized patients, in-hospital mortality was significantly higher among patients with a  
7 history of heart failure (aOR 1.88 [95% CI 1.27 – 2.78]).<sup>45</sup> Similar findings were reported by the Tomasoni et al.  
8 (n=692) with a crude HR of 2.43 [95% CI 1.69 – 3.50] for heart failure remaining significant after adjustment  
9 for age, sex, various comorbidities and vitals and laboratory values at admission (adjusted HR 2.25 [95% CI  
10 1.26 – 4.02]).<sup>46</sup> Whether the absolute risk of being hospitalized in the presence of heart failure is also increased  
11 was recently investigated in a population-based study, which found an aOR of 4.43 (95% CI 2.59 – 8.04; p-  
12 value <0.001).<sup>47</sup> Besides age and male sex, heart failure had the strongest association with in-hospital mortality  
13 among various different comorbidities in this study.

14         Importantly, besides heart failure, none of the other types of heart disease were associated with in-  
15 hospital mortality after adjustment for age, sex, BMI, diabetes, hypertension, CKD and COPD. This  
16 heterogeneity was also evident in the population based study by Petrilli et al. in which patients with CAD did  
17 not seem to be at increased risk of hospitalization due to COVID-19 (aOR was 1.08; 95% CI 0.81 – 1.44; p-  
18 value 0.60).<sup>47</sup> It could therefore be questioned whether all patients with heart disease should be defined as a  
19 group at risk, certainly when viewed in context of other demographic factors such as age and sex, as these  
20 appear to contribute to COVID-19 outcome to a much larger extent than pre-existing cardiac disease.<sup>12</sup> This  
21 finding is of relevance for clinicians in countries with low vaccination rates and limited critical care capacity,  
22 that sometimes are forced to strict prioritization of the initiation and continuation of critical care treatment  
23 during this pandemic. Based on the results of this study, a history of cardiac disease, besides severe heart failure,  
24 should on itself presumably not be a reason to refrain from critical care treatment.

25         As heart failure and atrial fibrillation are primarily diseases of the elderly, with a steep increase in the  
26 prevalence as well as severity beyond the age of 75 years<sup>48-50</sup>, a majority of patients with the heart disease  
27 subtypes associated with the highest risk as identified in this study are among the first to have been vaccinated  
28 according to current vaccine rollout strategies across Europe.<sup>27</sup> Adults with comorbidities are identified as an  
29 additional priority group but current advice lacks detail on which comorbidities should be considered high-risk.  
30 Therefore, we also determined the strength per heart disease subtype and in-hospital mortality in patients <65

1 years. Due to the lower comorbidity burden in this group, we hypothesized that the associations for the different  
2 types of heart disease would be higher in this patient population. However, due to the limited prevalence of  
3 heart disease in those aged <65 years of age, we lacked sufficient power to draw any strong conclusions based  
4 on this analysis.

5

#### 6 *Limitations*

7 Our study determines associations on a population level (e.g., all patients with heart failure) rather than  
8 individual risks and is limited to patients with COVID-19 that were hospitalized. In some countries that  
9 provided data, hospitalization and potentially life-sustaining treatments such as mechanical ventilation, might  
10 have been withheld in those with high frailty, including those with severe heart failure, which may have led to  
11 an overestimation of the found associations. Conversely, in younger patients treated more intensively, the  
12 associations of pre-existing cardiac disease with in-hospital mortality may be underestimated. This  
13 heterogeneity may have an impact the found associations. Furthermore, we could not reliably investigate  
14 associations between heart disease subtypes and HDU/ICU admission since we observed that patients admitted  
15 to a critical care unit were overall younger with fewer comorbidities. Since age in particular is well-known to be  
16 associated with a more severe COVID-19 disease course, this difference in baseline characteristics in those  
17 admitted to HDU/ICU is suggestive of an underlying selection of patients admitted for critical care. The  
18 mechanisms behind this selection are likely complex, influenced by amongst others the variability in critical  
19 care bed numbers across participating countries and available staff that may have led to demand for life-saving  
20 resources (nearly) exceeding supply, patient preference as well as cultural differences in clinical decision  
21 making. A further study limitation is that we only examined the impact of pre-existing cardiac disease on in-  
22 hospital mortality, which excludes the many deaths that have occurred in community settings and nursing  
23 homes. Moreover, there was no central adjudication of events in either of the two registries. Finally,  
24 echocardiographic data, providing more in-depth insight into heart failure etiology as well as the degree of  
25 systolic and diastolic dysfunction prior to hospitalization are lacking.

26

#### 27 *Future perspectives*

28 With the approval of several effective vaccines for COVID-19 there is hope of starting the containment of  
29 COVID-19 during 2021. During the first year of the pandemic, the scientific community has improved the  
30 understanding of this new disease considerably, including its effects on the cardiovascular system. However,

1 many aspects are still unknown. Evidence for a strong causal relationship between SARS-CoV-2 and  
2 myocarditis is still lacking. The discrepancy between the low prevalence of clinically diagnosed cardiac  
3 complications among the most ill requiring hospitalization and the large proportion of only mildly or even  
4 asymptomatic patients with abnormal findings on CMR after the acute phase of the disease has ceased warrant  
5 further investigation to understand their specificity and significance. In addition, studies on the long-term  
6 incidence of major adverse cardiac events (MACE) are required. Future studies should also evaluate the added  
7 value of different pre-existing cardiac comorbidities such as severe heart failure in prognostic models.

## 8 9 *Conclusion*

10 In this large retrospective cohort study across sixteen countries, more than one in three patients hospitalized  
11 with COVID-19 had underlying chronic cardiac disease. Patients with a history of heart disease were older,  
12 more frequently male and had a higher burden of other comorbid conditions at baseline. Inherently, patients  
13 with a history of heart disease have a poorer outcome once infected with SARS-CoV-2. However, after  
14 multivariable adjustment we did not find a significant association between chronic heart disease and in-hospital  
15 mortality. When evaluating the associations between specific heart disease subtypes and in-hospital mortality,  
16 considerable heterogeneity was detected. Of all patients with heart disease, those with heart failure are at  
17 greatest risk of death when hospitalized with COVID-19. None of the other heart disease subtypes investigated  
18 was significantly associated with in-hospital mortality. Furthermore, besides pulmonary embolism, serious  
19 cardiovascular complications are rarely diagnosed during hospital admission.

## 20 21 **Funding**

22 This work was supported by the Dutch Heart Foundation (2020B006 CAPACITY), the EuroQol Research  
23 Foundation, Novartis Global, Novo Nordisk Nederland, Servier Nederland and Daiichi Sankyo Nederland  
24 (CAPACITY-COVID) and the German Centre for Infection Research (DZIF) and the Willy Robert Pitzer  
25 Foundation (LEOSS).

26 Marijke Linschoten is supported by the Alexandre Suerman Stipend of the University Medical Center  
27 Utrecht. Folkert W. Asselbergs is supported by CardioVasculair Onderzoek Nederland 2015-12 eDETECT and  
28 along with Bryan Williams supported by the NIHR University College London Hospitals Biomedical Research  
29 Centre. Fleur V. Y. Tjong is supported by the NWO Rubicon grant 452019308, the Amsterdam Cardiovascular  
30 Institute MD/PhD Grant 2019-2020 and Postdoc Grant 2020. The work of Philippe Kopylov and Daria

1 Gognieva was financed by the Ministry of Science and Higher Education of the Russian Federation within the  
2 framework of state support for the creation and development of World-Class Research Center Digital biodesign  
3 and personalized healthcare no. 075-15-2020-926.

4

## 5 **Acknowledgements**

6 We want to express our gratitude and appreciation to all participating sites and researchers part of the  
7 CAPACITY-COVID collaborative consortium and LEOSS study and all research professionals that have  
8 contributed to the data collection. CAPACITY-COVID gratefully acknowledges the following organizations for  
9 their assistance in the development of the registry and/or coordination regarding the data registration in the  
10 collaborating centers: partners of the Dutch CardioVascular Alliance (DCVA), the Dutch Association of  
11 Medical Specialists (FMS) and the British Heart Foundation Centres of Research Excellence. In addition, the  
12 consortium is thankful for the endorsement of the CAPACITY-COVID initiative by the European Society of  
13 Cardiology (ESC), the European Heart Network (EHN) and the Society for Cardiovascular Magnetic Resonance  
14 (SCMR). Furthermore, the consortium appreciates the endorsement of CAPACITY-COVID as a flagship  
15 research project within the National Institute for Health Research (NIHR)/British Heart Foundation (BHF)  
16 Partnership framework for COVID-19 research. Part of this work is supported by the BigData@Heart  
17 Consortium, funded by the Innovative Medicines Initiative-2 joint undertaking under grant agreement no  
18 116074. This joint undertaking receives support from the EU's Horizon 2020 research and innovation  
19 programme and EFPIA. Furthermore we want to thank the LEOSS study infrastructure group: Jörg Janne  
20 Vehreschild (Goethe University Frankfurt, University Hospital of Cologne), Lisa Pilgram (Goethe University  
21 Frankfurt), Carolin E. M. Jakob (University Hospital of Cologne), Melanie Stecher (University Hospital of  
22 Cologne), Max Schons (University Hospital of Cologne), Susana M. Nunes de Miranda (University Hospital of  
23 Cologne), Annika Claßen (University Hospital of Cologne), Sandra Fuhrmann (University Hospital of  
24 Cologne), Bernd Franke (University Hospital of Cologne), Nick Schulze (University Hospital of Cologne),  
25 Fabian Praßer (Charité, Universitätsmedizin Berlin) and Martin Lablans (University Medical Center  
26 Mannheim).

27

## 28 **References**

29 1. Johns Hopkins Coronavirus Research Center: <https://coronavirus.jhu.edu/map.html> (4 March 2021).

- 1        2. Gudbjartsson DF, Helgason A, Jonsson H, Magnusson OT, Melsted P, Norddahl GL, Saemundsdottir J,  
2        Sigurdsson A, Sulem P, Agustsdottir AB, Eiriksdottir B, Fridriksdottir R, Gardarsdottir EE, Georgsson  
3        G, Gretarsdottir OS, Gudmundsson KR, Gunnarsdottir TR, Gylfason A, Holm H, Jensson BO,  
4        Jonasdottir A, Jonsson F, Josefsdottir KS, Kristjansson T, Magnusdottir DN, le Roux L,  
5        Sigmundsdottir G, Sveinbjornsson G, Sveinsdottir KE, Sveinsdottir M, Thorarensen EA,  
6        Thorbjornsson B, Löve A, Masson G, Jonsdottir I, Möller AD, Gudnason T, Kristinsson KG,  
7        Thorsteinsdottir U, Stefansson K. Spread of SARS-CoV-2 in the Icelandic Population. *N Engl J Med*.  
8        2020;382(24):2302-2315. doi: 10.1056/NEJMoa2006100.
- 9        3. Petersen E, Koopmans M, Go U, Hamer DH, Petrosillo N, Castelli F, Storgaard M, Al Khalili S,  
10        Simonsen L. Comparing SARS-CoV-2 with SARS-CoV and influenza pandemics. *Lancet Infect Dis*.  
11        2020;20(9):e238-e244. doi: 10.1016/S1473-3099(20)30484-9.
- 12        4. WHO Middle East respiratory syndrome coronavirus (MERS-CoV): key facts.  
13        [https://www.who.int/en/news-room/fact-sheets/detail/middle-east-respiratory-syndrome-coronavirus-](https://www.who.int/en/news-room/fact-sheets/detail/middle-east-respiratory-syndrome-coronavirus-(mers-cov))  
14        [mers-cov](https://www.who.int/en/news-room/fact-sheets/detail/middle-east-respiratory-syndrome-coronavirus-(mers-cov))) Date: March 11, 2019. (3 September 2020).
- 15        5. WHO Update 49—SARS case fatality ratio, incubation period.  
16        [https://www.who.int/csr/sars/archive/2003\\_05\\_07a/en/](https://www.who.int/csr/sars/archive/2003_05_07a/en/) Date: May 7, 2003. (3 September 2020).
- 17        6. Ruan S. Likelihood of survival of coronavirus disease 2019. *Lancet Infect Dis*. 2020;20(6):630-631.  
18        doi: 10.1016/S1473-3099(20)30257-7.
- 19        7. Piroth L, Cottenet J, Mariet AS, Bonniaud P, Blot M, Tubert-Bitter P, Quantin C. Comparison of the  
20        characteristics, morbidity, and mortality of COVID-19 and seasonal influenza: a nationwide,  
21        population-based retrospective cohort study. *Lancet Respir Med*. 2020;9(3):251–9. doi:  
22        10.1016/S2213-2600(20)30527-0.
- 23        8. Docherty AB, Harrison EM, Green CA, Hardwick HE, Pius R, Norman L, Holden KA, Read JM,  
24        Dondelinger F, Carson G, Merson L, Lee J, Plotkin D, Sigfrid L, Halpin S, Jackson C, Gamble C,  
25        Horby PW, Nguyen-Van-Tam JS, Ho A, Russell CD, Dunning J, Openshaw PJ, Baillie JK, Semple  
26        MG; ISARIC4C investigators. Features of 20 133 UK patients in hospital with covid-19 using the  
27        ISARIC WHO Clinical Characterisation Protocol: prospective observational cohort study. *BMJ*.  
28        2020;369:m1985. doi: 10.1136/bmj.m1985.
- 29        9. Linschoten M, Peters S, van Smeden M, Jewbali LS, Schaap J, Siebelink HM, Smits PC, Tieleman RG,  
30        van der Harst P, van Gilst WH, Asselbergs FW; CAPACITY-COVID collaborative consortium.



- 1 Cardiac complications in patients hospitalised with COVID-19. *Eur Heart J Acute Cardiovasc Care.*
- 2 2020;9(8):817-823. doi: 10.1177/2048872620974605.
- 3 10. Yehia BR, Winegar A, Fogel R, Fakhri M, Ottenbacher A, Jesser C, Bufalino A, Huang RH, Cacchione
- 4 J. Association of Race With Mortality Among Patients Hospitalized With Coronavirus Disease 2019
- 5 (COVID-19) at 92 US Hospitals. *JAMA Netw Open.* 2020;3(8):e2018039. doi:
- 6 10.1001/jamanetworkopen.2020.18039.
- 7 11. Fried MW, Crawford JM, Mospan AR, Watkins SE, Munoz Hernandez B, Zink RC, Elliott S, Burleson
- 8 K, Landis C, Reddy KR, Brown RS. Patient Characteristics and Outcomes of 11,721 Patients with
- 9 COVID-19 Hospitalized Across the United States. *Clin Infect Dis.* 2020:ciaa1268. doi:
- 10 10.1093/cid/ciaa1268. Epub ahead of print.
- 11 12. Williamson EJ, Walker AJ, Bhaskaran K, Bacon S, Bates C, Morton CE, Curtis HJ, Mehrkar A, Evans
- 12 D, Inglesby P, Cockburn J, McDonald HI, MacKenna B, Tomlinson L, Douglas IJ, Rentsch CT,
- 13 Mathur R, Wong AYS, Grieve R, Harrison D, Forbes H, Schultze A, Croker R, Parry J, Hester F,
- 14 Harper S, Perera R, Evans SJW, Smeeth L, Goldacre B. Factors associated with COVID-19-related
- 15 death using OpenSAFELY. *Nature.* 2020;584(7821):430-436. doi: 10.1038/s41586-020-2521-4.
- 16 13. Wu Z, McGoogan JM. Characteristics of and Important Lessons From the Coronavirus Disease 2019
- 17 (COVID-19) Outbreak in China: Summary of a Report of 72 314 Cases From the Chinese Center for
- 18 Disease Control and Prevention. *JAMA.* 2020;323(13):1239-1242. doi: 10.1001/jama.2020.2648.
- 19 14. Weng TC, Chiu HR, Chen SY, Shih FY, King CC, Fang CC. National retrospective cohort study to
- 20 identify age-specific fatality risks of comorbidities among hospitalised patients with influenza-like
- 21 illness in Taiwan. *BMJ Open.* 2019;9(6):e025276. doi: 10.1136/bmjopen-2018-025276.
- 22 15. Mertz D, Kim TH, Johnstone J, Lam PP, Science M, Kuster SP, Fadel SA, Tran D, Fernandez E,
- 23 Bhatnagar N, Loeb M. Populations at risk for severe or complicated influenza illness: systematic
- 24 review and meta-analysis. *BMJ.* 2013;347:f5061. doi: 10.1136/bmj.f5061.
- 25 16. Siropaides CH, Sulistio MS, Reimold SC. Crucial Conversations With Patients in the Era of COVID-
- 26 19. *Circulation.* 2020;142(3):191-193. doi: 10.1161/CIRCULATIONAHA.120.047374. Epub 2020
- 27 May 6.
- 28 17. Mafham MM, Spata E, Goldacre R, Gair D, Curnow P, Bray M, Hollings S, Roebuck C, Gale CP,
- 29 Mamas MA, Deanfield JE, de Belder MA, Luescher TF, Denwood T, Landray MJ, Emberson JR,
- 30 Collins R, Morris EJA, Casadei B, Baigent C. COVID-19 pandemic and admission rates for and

- 1 management of acute coronary syndromes in England. *Lancet*. 2020;396(10248):381-389. doi:  
2 10.1016/S0140-6736(20)31356-8.
- 3 18. Linschoten M, Asselbergs FW. CAPACITY-COVID: a European Registry to determine the role of  
4 cardiovascular disease in the COVID-19 pandemic. *Eur Heart J*. 2020;41(19):1795-1796. doi:  
5 10.1093/eurheartj/ehaa280.
- 6 19. ISARIC COVID-19 CRF. <https://isaric.org/research/covid-19-clinical-research-resources/covid-19-crf/>  
7 (16 of February 2021).
- 8 20. Caforio AL, Pankuweit S, Arbustini E, Basso C, Gimeno-Blanes J, Felix SB, Fu M, Heliö T, Heymans  
9 S, Jahns R, Klingel K, Linhart A, Maisch B, McKenna W, Mogensen J, Pinto YM, Ristic A,  
10 Schultheiss HP, Seggewiss H, Tavazzi L, Thiene G, Yilmaz A, Charron P, Elliott PM; European  
11 Society of Cardiology Working Group on Myocardial and Pericardial Diseases. Current state of  
12 knowledge on aetiology, diagnosis, management, and therapy of myocarditis: a position statement of  
13 the European Society of Cardiology Working Group on Myocardial and Pericardial Diseases. *Eur*  
14 *Heart J*. 2013;34(33):2636-48, 2648a-2648d. doi: 10.1093/eurheartj/eh210.
- 15 21. Adler Y, Charron P, Imazio M, Badano L, Barón-Esquivias G, Bogaert J, Brucato A, Gueret P, Klingel  
16 K, Lionis C, Maisch B, Mayosi B, Pavie A, Ristic AD, Sabaté Tenas M, Seferovic P, Swedberg K,  
17 Tomkowski W; ESC Scientific Document Group. 2015 ESC Guidelines for the diagnosis and  
18 management of pericardial diseases: The Task Force for the Diagnosis and Management of Pericardial  
19 Diseases of the European Society of Cardiology (ESC) Endorsed by: The European Association for  
20 Cardio-Thoracic Surgery (EACTS). *Eur Heart J*. 2015;36(42):2921-2964. doi:  
21 10.1093/eurheartj/ehv318.
- 22 22. Habib G, Lancellotti P, Antunes MJ, Bongiorni MG, Casalta JP, Del Zotti F, Dulgheru R, El Khoury  
23 G, Erba PA, Iung B, Miro JM, Mulder BJ, Plonska-Gosciniak E, Price S, Roos-Hesselink J, Snygg-  
24 Martin U, Thuny F, Tornos Mas P, Vilacosta I, Zamorano JL; ESC Scientific Document Group. 2015  
25 ESC Guidelines for the management of infective endocarditis: The Task Force for the Management of  
26 Infective Endocarditis of the European Society of Cardiology (ESC). Endorsed by: European  
27 Association for Cardio-Thoracic Surgery (EACTS), the European Association of Nuclear Medicine  
28 (EANM). *Eur Heart J*. 2015;36(44):3075-3128. doi: 10.1093/eurheartj/ehv319.
- 29 23. Roffi M, Patrono C, Collet JP, Mueller C, Valgimigli M, Andreotti F, Bax JJ, Borger MA, Brotons C,  
30 Chew DP, Gencer B, Hasenfuss G, Kjeldsen K, Lancellotti P, Landmesser U, Mehilli J, Mukherjee D,

- 1 Storey RF, Windecker S; ESC Scientific Document Group. 2015 ESC Guidelines for the management  
2 of acute coronary syndromes in patients presenting without persistent ST-segment elevation: Task  
3 Force for the Management of Acute Coronary Syndromes in Patients Presenting without Persistent ST-  
4 Segment Elevation of the European Society of Cardiology (ESC). *Eur Heart J*. 2016;37(3):267-315.  
5 doi: 10.1093/eurheartj/ehv320.
- 6 24. Buxton AE, Calkins H, Callans DJ, DiMarco JP, Fisher JD, Greene HL, Haines DE, Hayes DL,  
7 Heidenreich PA, Miller JM, Poppas A, Prystowsky EN, Schoenfeld MH, Zimetbaum PJ, Heidenreich  
8 PA, Goff DC, Grover FL, Malenka DJ, Peterson ED, Radford MJ, Redberg RF; American College of  
9 Cardiology; American Heart Association Task Force on Clinical Data Standards; (ACC/AHA/HRS  
10 Writing Committee to Develop Data Standards on Electrophysiology). ACC/AHA/HRS 2006 key data  
11 elements and definitions for electrophysiological studies and procedures: a report of the American  
12 College of Cardiology/American Heart Association Task Force on Clinical Data Standards  
13 (ACC/AHA/HRS Writing Committee to Develop Data Standards on Electrophysiology). *J Am Coll*  
14 *Cardiol*. 2006;48(11):2360-96. doi: 10.1016/j.jacc.2006.09.020.
- 15 25. Jakob CEM, Borgmann S, Duygu F, Behrends U, Hower M, Merle U, Friedrichs A, Tometten L,  
16 Hanses F, Jung N, Rieg S, Wille K, Grüner B, Klinker H, Gersbacher-Runge N, Hellwig K, Eberwein  
17 L, Dolff S, Rauschnig D, von Bergwelt-Baildon M, Lanznaster J, Strauß R, Trauth J, de With K,  
18 Ruethrich M, Lueck C, Nattermann J, Tschardtke L, Pilgram L, Fuhrmann S, Classen A, Stecher M,  
19 Schons M, Spinner C, Vehreschild JJ. First results of the "Lean European Open Survey on SARS-CoV-  
20 2-Infected Patients (LEOSS)". *Infection*. 2021 Feb;49(1):63-73. doi: 10.1007/s15010-020-01499-0.
- 21 26. Jakob CEM, Kohlmayer F, Meurers T, Vehreschild JJ, Prasser F. Design and evaluation of a data  
22 anonymization pipeline to promote Open Science on COVID-19. *Sci Data*. 2020 Dec 10;7(1):435. doi:  
23 10.1038/s41597-020-00773-y.
- 24 27. European Centre for Disease Prevention and Control. Overview of COVID-19 vaccination strategies  
25 and vaccine deployment plans in the EU/EEA and the UK – 2 December 2020. ECDC: Stockholm;  
26 2020.
- 27 28. Pritchard MG, ISARIC Clinical Characterisation Group. COVID-19 symptoms at hospital admission  
28 vary with age and sex: ISARIC multinational study.  
29 medRxiv 2020.10.26.20219519; doi:<https://doi.org/10.1101/2020.10.26.20219519>

- 1 29. Michelen M, Manoharan L, Elkheir N, Cheng V, Dagens D, Hastie C, O'Hara M, Suet JC, Burls A,  
2 Foote C, Carson G, Olliaro P, Sigfrid L, Stavropoulou C. Characterising long-term covid-19: a rapid  
3 living systematic review.  
4 medRxiv 2020.12.08.20246025; doi:<https://doi.org/10.1101/2020.12.08.20246025>
- 5 30. Carfi A, Bernabei R, Landi F; Gemelli Against COVID-19 Post-Acute Care Study Group. Persistent  
6 Symptoms in Patients After Acute COVID-19. JAMA. 2020;324(6):603-605. doi:  
7 10.1001/jama.2020.12603.
- 8 31. Goërtz YMJ, Van Herck M, Delbressine JM, Vaes AW, Meys R, Machado FVC, Houben-Wilke S,  
9 Burtin C, Posthuma R, Franssen FME, van Loon N, Hajian B, Spies Y, Vijlbrief H, van 't Hul AJ,  
10 Janssen DJA, Spruit MA. Persistent symptoms 3 months after a SARS-CoV-2 infection: the post-  
11 COVID-19 syndrome? ERJ Open Res. 2020;6(4):00542-2020. doi: 10.1183/23120541.00542-2020.
- 12 32. Puntmann VO, Carerj ML, Wieters I, Fahim M, Arendt C, Hoffmann J, Shchendrygina A, Escher F,  
13 Vasa-Nicotera M, Zeiher AM, Vehreschild M, Nagel E. Outcomes of Cardiovascular Magnetic  
14 Resonance Imaging in Patients Recently Recovered From Coronavirus Disease 2019 (COVID-19).  
15 JAMA Cardiol. 2020;5(11):1265-1273. doi: 10.1001/jamacardio.2020.3557. Erratum in: JAMA  
16 Cardiol. 2020;5(11):1308.
- 17 33. Nicin L, Abplanalp WT, Mellentin H, Kattih B, Tombor L, John D, Schmitto JD, Heineke J, Emrich F,  
18 Arsalan M, Holubec T, Walther T, Zeiher AM, Dimmeler S. Cell type-specific expression of the  
19 putative SARS-CoV-2 receptor ACE2 in human hearts. Eur Heart J. 2020;41(19):1804-1806. doi:  
20 10.1093/eurheartj/ehaa311.
- 21 34. The Human Protein Atlas: <https://www.proteinatlas.org/ENSG00000130234-ACE2/celltype> (23  
22 February 2021)
- 23 35. Richardson S, Hirsch JS, Narasimhan M, Crawford JM, McGinn T, Davidson KW; the Northwell  
24 COVID-19 Research Consortium, Barnaby DP, Becker LB, Chelico JD, Cohen SL, Cookingham J,  
25 Coppa K, Diefenbach MA, Dominello AJ, Duer-Hefeje J, Falzon L, Gitlin J, Hajizadeh N, Harvin TG,  
26 Hirschwerk DA, Kim EJ, Kozel ZM, Marrast LM, Mogavero JN, Osorio GA, Qiu M, Zanos TP.  
27 Presenting Characteristics, Comorbidities, and Outcomes Among 5700 Patients Hospitalized With  
28 COVID-19 in the New York City Area. JAMA. 2020;323(20):2052-2059. doi:  
29 10.1001/jama.2020.6775. Erratum in: JAMA. 2020;323(20):2098.

- 1 36. Lala A, Johnson KW, Januzzi JL, Russak AJ, Paranjpe I, Richter F, Zhao S, Somani S, Van Vleck T,  
2 Vaid A, Chaudhry F, De Freitas JK, Fayad ZA, Pinney SP, Levin M, Charney A, Bagiella E, Narula J,  
3 Glicksberg BS, Nadkarni G, Mancini DM, Fuster V; Mount Sinai COVID Informatics Center.  
4 Prevalence and Impact of Myocardial Injury in Patients Hospitalized With COVID-19 Infection. *J Am*  
5 *Coll Cardiol.* 2020 Aug 4;76(5):533-546. doi: 10.1016/j.jacc.2020.06.007. Epub 2020 Jun 8.
- 6 37. Halushka MK, Vander Heide RS. Myocarditis is rare in COVID-19 autopsies: cardiovascular findings  
7 across 277 postmortem examinations. *Cardiovasc Pathol.* 2021;50:107300. doi:  
8 10.1016/j.carpath.2020.107300.
- 9 38. Huang L, Zhao P, Tang D, Zhu T, Han R, Zhan C, Liu W, Zeng H, Tao Q, Xia L. Cardiac Involvement  
10 in Patients Recovered From COVID-2019 Identified Using Magnetic Resonance Imaging. *JACC*  
11 *Cardiovasc Imaging.* 2020;13(11):2330-2339. doi: 10.1016/j.jcmg.2020.05.004.
- 12 39. Kotecha T, Knight DS, Razvi Y, Kumar K, Vimalesvaran K, Thornton G, Patel R, Chacko L, Brown  
13 JT, Coyle C, Leith D, Shetye A, Ariff B, Bell R, Captur G, Coleman M, Goldring J, Gopalan D,  
14 Heightman M, Hillman T, Howard L, Jacobs M, Jeetley PS, Kanagaratnam P, Kon OM, Lamb LE,  
15 Manisty CH, Mathurdas P, Mayet J, Negus R, Patel N, Pierce I, Russell G, Wolff A, Xue H, Kellman  
16 P, Moon JC, Treibel TA, Cole GD, Fontana M. Patterns of myocardial injury in recovered troponin-  
17 positive COVID-19 patients assessed by cardiovascular magnetic resonance. *Eur Heart J.*  
18 2021:ehab075. doi: 10.1093/eurheartj/ehab075. Epub ahead of print.
- 19 40. Rajpal S, Tong MS, Borchers J, Zareba KM, Obarski TP, Simonetti OP, Daniels CJ. Cardiovascular  
20 Magnetic Resonance Findings in Competitive Athletes Recovering From COVID-19 Infection. *JAMA*  
21 *Cardiol.* 2021;6(1):116-118. doi: 10.1001/jamacardio.2020.4916.
- 22 41. Klok FA, Kruip MJHA, van der Meer NJM, Arbous MS, Gommers DAMPJ, Kant KM, Kaptein FHJ,  
23 van Paassen J, Stals MAM, Huisman MV, Endeman H. Incidence of thrombotic complications in  
24 critically ill ICU patients with COVID-19. *Thromb Res.* 2020;191:145-147. doi:  
25 10.1016/j.thromres.2020.04.013.
- 26 42. Poissy J, Goutay J, Caplan M, Parmentier E, Duburcq T, Lassalle F, Jeanpierre E, Rauch A, Labreuche  
27 J, Susen S; Lille ICU Haemostasis COVID-19 Group. Pulmonary Embolism in Patients With COVID-  
28 19: Awareness of an Increased Prevalence. *Circulation.* 2020;142(2):184-186. doi:  
29 10.1161/CIRCULATIONAHA.120.047430.

- 1        43. Angchaisuksiri P, Blair C, Dane K, Davila J, DeSancho MT, Diuguid D, Griffin DO, Kahn SR, Klok  
2        FA, Lee AI, Neumann I, Pai A, Pai M, Righini M, Sanfilippo KM, Siegal D, Skara M, Touri K, Akl  
3        EA, Bou Akl I, Boulos M, Brignardello-Petersen R, Charide R, Chan M, Dearness K, Darzi AJ, Kolb  
4        P, Colunga-Lozano LE, Mansour R, Morgano GP, Morsi RZ, Noori A, Piggott T, Qiu Y, Roldan Y,  
5        Schünemann F, Stevens A, Solo K, Ventresca M, Wiercioch W, Mustafa RA, Schünemann HJ.  
6        American Society of Hematology 2021 guidelines on the use of anticoagulation for  
7        thromboprophylaxis in patients with COVID-19. *Blood Adv.* 2021 Feb 9;5(3):872-888. doi:  
8        10.1182/bloodadvances.2020003763.
- 9        44. Chalmers JD, Crichton ML, Goeminne PC, Cao B, Humbert M, Shteinberg M, Antoniou KM, Ulrik  
10        CS, Parks H, Wang C, Vandendriessche T, Qu J, Stolz D, Brightling C, Welte T, Aliberti S, Simonds  
11        AK, Tonia T, Roche N. Management of hospitalised adults with coronavirus disease 2019 (COVID-  
12        19): a European Respiratory Society living guideline. *Eur Respir J.* 2021 Apr 15;57(4):2100048. doi:  
13        10.1183/13993003.00048-2021.
- 14        45. Alvarez-Garcia J, Lee S, Gupta A, Cagliostro M, Joshi AA, Rivas-Lasarte M, Contreras J, Mitter SS,  
15        LaRocca G, Tlachi P, Brunjes D, Glicksberg BS, Levin MA, Nadkarni G, Fayad Z, Fuster V, Mancini  
16        D, Lala A. Prognostic Impact of Prior Heart Failure in Patients Hospitalized With COVID-19. *J Am  
17        Coll Cardiol.* 2020 Nov 17;76(20):2334-2348. doi: 10.1016/j.jacc.2020.09.549.
- 18        46. Tomasoni D, Inciardi RM, Lombardi CM, Tedino C, Agostoni P, Ameri P, Barbieri L, Bellasi A,  
19        Camporotondo R, Canale C, Carubelli V, Carugo S, Catagnano F, Dalla Vecchia LA, Danzi GB, Di  
20        Pasquale M, Gaudenzi M, Giovinazzo S, Gneccchi M, Iorio A, La Rovere MT, Leonardi S, Maccagni G,  
21        Mapelli M, Margonato D, Merlo M, Monzo L, Mortara A, Nuzzi V, Piepoli M, Porto I, Pozzi A,  
22        Sarullo F, Sinagra G, Volterrani M, Zacccone G, Guazzi M, Senni M, Metra M. Impact of heart failure  
23        on the clinical course and outcomes of patients hospitalized for COVID-19. Results of the Cardio-  
24        COVID-Italy multicentre study. *Eur J Heart Fail.* 2020;22(12):2238-2247. doi: 10.1002/ejhf.2052.
- 25        47. Petrilli CM, Jones SA, Yang J, Rajagopalan H, O'Donnell L, Chernyak Y, Tobin KA, Cerfolio RJ,  
26        Francois F, Horwitz LI. Factors associated with hospital admission and critical illness among 5279  
27        people with coronavirus disease 2019 in New York City: prospective cohort study. *BMJ.*  
28        2020;369:m1966. doi: 10.1136/bmj.m1966.

- 1        48. Störk S, Handrock R, Jacob J, Walker J, Calado F, Lahoz R, Hupfer S, Klebs S. Epidemiology of heart  
2        failure in Germany: a retrospective database study. *Clin Res Cardiol.* 2017;106(11):913-922. doi:  
3        10.1007/s00392-017-1137-7.
- 4        49. Ammar KA, Jacobsen SJ, Mahoney DW, Kors JA, Redfield MM, Burnett JC Jr, Rodeheffer RJ.  
5        Prevalence and prognostic significance of heart failure stages: application of the American College of  
6        Cardiology/American Heart Association heart failure staging criteria in the community. *Circulation.*  
7        2007;115(12):1563-70. doi: 10.1161/CIRCULATIONAHA.106.666818.
- 8        50. Schnabel RB, Yin X, Gona P, Larson MG, Beiser AS, McManus DD, Newton-Cheh C, Lubitz SA,  
9        Magnani JW, Ellinor PT, Seshadri S, Wolf PA, Vasan RS, Benjamin EJ, Levy D. 50 year trends in  
10        atrial fibrillation prevalence, incidence, risk factors, and mortality in the Framingham Heart Study: a  
11        cohort study. *Lancet.* 2015 Jul 11;386(9989):154-62. doi: 10.1016/S0140-6736(14)61774-8.

12

### 13 **Figure legends**

14 **Figure 1:** Associations (crude: top; age- and sex adjusted; center, multivariable adjusted; bottom) between any  
15 history of cardiac disease, heart disease subtypes and in-hospital mortality. P-values are adjusted for multiple  
16 testing.

17

18 **Figure 2:** Multivariable adjusted associations between any history of cardiac disease, heart disease subtypes and  
19 in-hospital mortality in patients aged  $\leq 65$  (top) and  $>65$  years (bottom). \*p-value interaction heart disease  
20 subtype and age. Patients with prior myocardial infarction are included in the coronary artery disease group.

21

### 22 **Disclosures**

23 See disclosure paragraph.

24

25

26

27

28

29

30

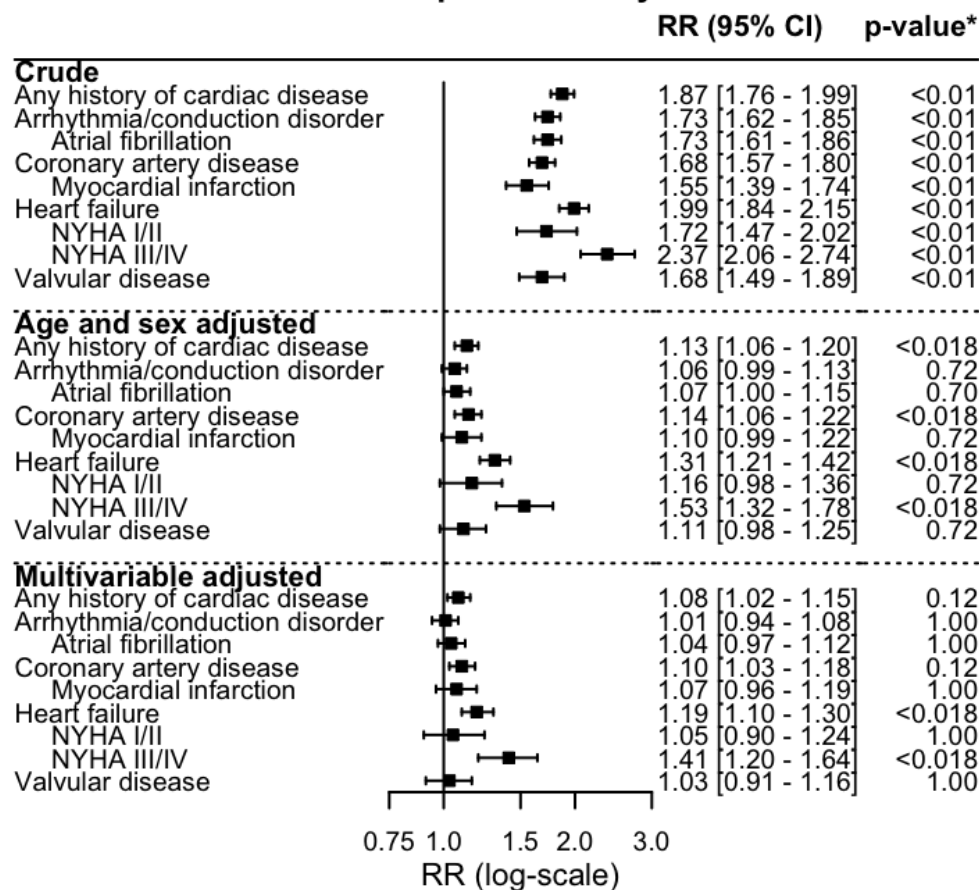
31

32

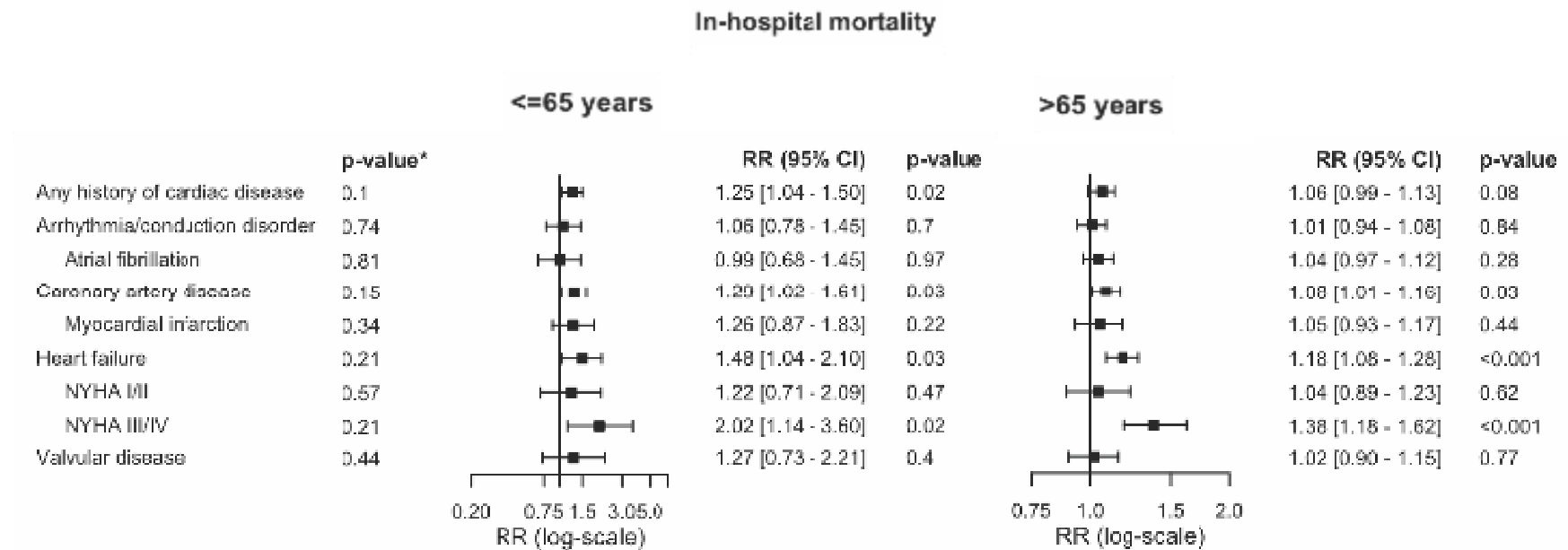
1  
2  
3  
4  
5  
6  
7  
8  
9  
10  
11  
12  
13  
14  
15  
16  
17 **Figure**  
18 **Figure 1**



### In-hospital mortality



1 **Figure 2**



2  
3  
4  
5  
6  
7  
8  
9

## 1 **Authors**

2 Linschoten M<sup>1</sup>, Uijl A<sup>2</sup>, Schut A<sup>3</sup>, Jakob CEM<sup>4,5</sup>, Romão LR<sup>6,7</sup>, Bell RM<sup>8</sup>, McFarlane E<sup>9</sup>, Stecher M<sup>4,5</sup>, Zondag  
3 AGM<sup>2</sup>, van Iperen EPA<sup>10</sup>, Hermans-van Ast W<sup>10</sup>, Lea NC<sup>7</sup>, Schaap J<sup>3,11</sup>, Jewbali LS<sup>12,13</sup>, Smits PC<sup>14</sup>, Patel RS<sup>7,9</sup>,  
4 Aujayeb A<sup>15</sup>, Ripley DP<sup>16</sup>, Saxena M<sup>17</sup>, Spinner C<sup>5,18</sup>, McCann GP<sup>19</sup>, Moss AJ<sup>19</sup>, Parker E<sup>19</sup>, Borgmann S<sup>20</sup>,  
5 Tessitore E<sup>21</sup>, Rieg S<sup>22</sup>, Kearney MT<sup>23</sup>, Byrom-Goulthorp R<sup>23</sup>, Hower M<sup>24</sup>, Al-Ali AK<sup>25</sup>, Alshehri AM<sup>26</sup>, Alnafie  
6 AN<sup>27</sup>, Alshahrani M<sup>28</sup>, Almubarak YA<sup>29</sup>, Al-Muhanna FA<sup>30</sup>, Al-Rubaish AM<sup>30</sup>, Hanses F<sup>31</sup>, Shore AC<sup>32</sup>, Ball  
7 C<sup>32</sup>, Anning CM<sup>32</sup>, Rùthrich MM<sup>33</sup>, Nierop PR<sup>34</sup>, Vehreschild MJGT<sup>35</sup>, Heymans SRB<sup>36-38</sup>, Henkens MTHM<sup>36</sup>,  
8 Raafs AG<sup>36</sup>, van der Horst ICC<sup>39</sup>, van Bussel BCT<sup>39</sup>, Magdelijns FJH<sup>40</sup>, Lanznaster J<sup>41</sup>, Kopylov PY<sup>42</sup>, Blagova  
9 OV<sup>43</sup>, Wille K<sup>44</sup>, Pinto YM<sup>45</sup>, Offerhaus JA<sup>45</sup>, Bleijendaal H<sup>45,46</sup>, Piepel C<sup>47</sup>, ten Berg JM<sup>48</sup>, Bor WL<sup>48</sup>, Maarse  
10 M<sup>48</sup>, Römmele C<sup>49</sup>, Tio RA<sup>50,51</sup>, Sturkenboom NH<sup>50</sup>, Tometten L<sup>52</sup>, den Uil CA<sup>12,13</sup>, Scholte NTB<sup>12</sup>, Groenendijk  
11 AL<sup>53</sup>, Dolff S<sup>54</sup>, Zijlstra LE<sup>55</sup>, Hilt AD<sup>55</sup>, von Bergwelt-Baildon M<sup>56-58</sup>, Groenemeijer BE<sup>59</sup>, Merle U<sup>60</sup>, van der  
12 Zee PM<sup>61</sup>, van Beek EA<sup>61</sup>, Rothfuss K<sup>62</sup>, Tjong FVY<sup>45, 63,64</sup>, van der Lingen ACJ<sup>63</sup>, Kolk MZH<sup>45</sup>, Isberner N<sup>65</sup>,  
13 Monraats PS<sup>66</sup>, Magro M<sup>66</sup>, Hermans WRM<sup>66</sup>, Kochanek M<sup>67,68</sup>, Captur G<sup>9,69</sup>, Thomson RJ<sup>70,71</sup>, Nadalin S<sup>72</sup>,  
14 Linssen GCM<sup>73</sup>, Veneman T<sup>74</sup>, Zaal R<sup>75</sup>, Degenhardt C<sup>76</sup>, Martens FMAC<sup>77</sup>, Badings EA<sup>77</sup>, Strauss R<sup>78</sup>, Zaman  
15 AG<sup>79</sup>, Alkhalil M<sup>80</sup>, Prasad S<sup>81,82</sup>, Grüner B<sup>83</sup>, Haerkens-Arends HE<sup>84</sup>, Eberwein L<sup>85</sup>, Dark P<sup>86</sup>, Lomas D<sup>86</sup>, vom  
16 Dahl J<sup>87</sup>, Verschure DO<sup>88</sup>, Hellwig K<sup>89</sup>, Mosterd A<sup>90</sup>, Rauschning D<sup>91</sup>, van der Heijden DJ<sup>92</sup>, Neufang M<sup>93</sup>, van  
17 Hessen M<sup>94</sup>, Raichle C<sup>95</sup>, Montagna L<sup>96</sup>, Mazzilli SG<sup>97</sup>, Bianco M<sup>98</sup>, Westhoff T<sup>99</sup>, Shafiee A<sup>100</sup>, Hedayat B<sup>101</sup>,  
18 Saneei E<sup>102</sup>, Porhosseini H<sup>103</sup>, Jensen B<sup>104</sup>, Gabriel L<sup>105</sup>, Er AG<sup>106</sup>, Kietselaer BLJH<sup>107</sup>, Schubert J<sup>108</sup>,  
19 Timmermans P Jr<sup>109</sup>, Messiaen P<sup>110,111</sup>, Friedrichs A<sup>112</sup>, van den Brink FS<sup>113</sup>, Woudstra P<sup>113</sup>, Trauth J<sup>114</sup>, Ribeiro  
20 MIA<sup>115</sup>, de With K<sup>116</sup>, van der Linden MMJM<sup>117</sup>, Kielstein JT<sup>118</sup>, Macías Ruiz R<sup>119</sup>, Guggemos W<sup>120</sup>, Hellou  
21 E<sup>121</sup>, Markart P<sup>122</sup>, van Kesteren HAM<sup>123</sup>, Heigener D<sup>124</sup>, de Vries JK<sup>125</sup>, Stieglitz S<sup>126</sup>, Baltazar JB<sup>127</sup>, Voigt I<sup>128</sup>,  
22 van de Watering DJ<sup>129</sup>, Milovanovic M<sup>130</sup>, Redón J<sup>131,132</sup>, Forner MJ<sup>131,132</sup>, Rüdell J<sup>133</sup>, Wu KW<sup>134</sup>, Nattermann  
23 J<sup>135</sup>, Veldhuis LI<sup>136</sup>, Westendorp ICD<sup>137</sup>, Riedel C<sup>138</sup>, Kwakkel-van Erp JM<sup>139</sup>, van Ierssel S<sup>140</sup>, van  
24 Craenenbroeck EM<sup>141</sup>, Walter L<sup>142</sup>, de Sutter J<sup>143,144</sup>, Worm M<sup>145</sup>, Drost JT<sup>146</sup>, Moriarty A<sup>147</sup>, Salah R<sup>148</sup>,  
25 Charlotte N<sup>149</sup>, van Boxem AJM<sup>150</sup>, Dorman HGR<sup>151</sup>, Reidinga AC<sup>152</sup>, van der Meer P<sup>153</sup>, Wierda E<sup>64</sup>, van Veen  
26 HPAA<sup>154</sup>, Delsing CE<sup>155</sup>, Meijs MFL<sup>156</sup>, van de Wal RMA<sup>157</sup>, Weytjens C<sup>158</sup>, Hermanides RS<sup>159</sup>, Emans ME<sup>160</sup>,  
27 al-Windy NYY<sup>161</sup>, Koning AMH<sup>162</sup>, Schellings DAAM<sup>163</sup>, Anthonio RL<sup>164</sup>, Bucciarelli- Ducci C<sup>165</sup>, Caputo  
28 M<sup>166,167</sup>, Westendorp PHM<sup>168</sup>, Kuijper AFM<sup>169</sup>, van Ofwegen-Hanekamp CEE<sup>170</sup>, Persoon AM<sup>171</sup>, Seelig J<sup>172</sup>,  
29 van der Harst P<sup>1</sup>, Siebelink HJ<sup>55</sup>, van Smeden M<sup>2</sup>, Williams S<sup>173</sup>, Pilgram L<sup>174</sup>, van Gilst WH<sup>175</sup>, Tieleman  
30 RG<sup>176</sup>, Williams B<sup>6,9</sup>, Asselbergs FW<sup>1,7,9</sup>.

31

## 32 **Collaborators**

33 Alling TE<sup>1</sup>, Ahmed R<sup>15</sup>, Handgraaf S<sup>21</sup>, Gognieva DG<sup>42</sup>, Mesitskaya DF<sup>177</sup>, van der Graaf M<sup>12</sup>, Ruiter AH<sup>12</sup>,  
34 Pölkerman BC<sup>59</sup>, Jansen SE<sup>59</sup>, Selder JL<sup>45,63</sup>, Pieterse-Rots A<sup>73</sup>, Kuipers-Elferink L<sup>73</sup>, van der Sluis A<sup>77</sup>, van Eck  
35 JWM<sup>84</sup>, Gevers RMM<sup>84</sup>, van Dalen DH<sup>84</sup>, Lensink E<sup>88</sup>, Bunschoten P<sup>90</sup>, van Doorn JL<sup>90</sup>, Knufman N<sup>92</sup>, van  
36 Marrewijk V<sup>92</sup>, Broekman M<sup>94</sup>, Bos M<sup>94</sup>, Perrelli MG<sup>96</sup>, Biolé CA<sup>96</sup>, Hosseini K<sup>101</sup>, Tajdini M<sup>178</sup>, Domange  
37 JD<sup>105</sup>, Dormal FD<sup>105</sup>, Jourdan JD<sup>105</sup>, Kleikers P<sup>107</sup>, Hessels-Linnemeijer BM<sup>107</sup>, Dekimpe E<sup>109</sup>, Janssen A<sup>109</sup>,  
38 Sousa AIC<sup>115</sup>, Cardoso NM<sup>115</sup>, Tercedor Sánchez L<sup>119</sup>, Bermúdez Jiménez J<sup>119</sup>, Koole BAS<sup>123</sup>, Huisman J<sup>123</sup>, Kui  
39 KK<sup>125</sup>, Bruinsma S<sup>125</sup>, Kievit CM<sup>134</sup>, van Kempen MJ<sup>134</sup>, Melein AJ<sup>137</sup>, Koole MAC<sup>137</sup>, van Poppel A<sup>139</sup>, van  
40 Meerbeek JP<sup>139</sup>, Vlieghe E<sup>140</sup>, ten Kate GL<sup>140</sup>, Heidbuchel H<sup>141</sup>, van de Heyning CM<sup>141</sup>, Willems AM<sup>143</sup>, Meijer

1 EJ<sup>146</sup>, Habib A<sup>179</sup>, Elshinawy K<sup>179</sup>, Vial H<sup>180</sup>, Grangeon S<sup>180</sup>, Wils AM<sup>151</sup>, Jacobs TC<sup>151</sup>, Vreugdenhil P<sup>176</sup>,  
2 Hendriks-van Woerden M<sup>176</sup>, van Aken K<sup>153</sup>, Hamilton K<sup>153</sup>, van Nes CPM<sup>64</sup>, Vonkeman HE<sup>181</sup>, Haenen NA<sup>157</sup>,  
3 de Bruijn EAW<sup>182</sup>, Cosyns B<sup>158</sup>, Lemoine I<sup>158</sup>, Guclu A<sup>159</sup>, Dunnink A<sup>159</sup>, den Boer-Penning P<sup>160</sup>, Zoet-Nugteren  
4 SK<sup>160</sup>, Reitsma MJ<sup>162</sup>, Broeyer FJF<sup>183</sup>, Drost IMJ<sup>163</sup>, Reinders S<sup>163</sup>, van der Kooi SE<sup>164</sup>, Paris FMA<sup>164</sup>,  
5 Bayraktar-Verver ECE<sup>169</sup>, Bosch L<sup>170</sup>, Bontje M<sup>170</sup>, Pisters R<sup>172</sup>, de Vries TAC<sup>172</sup>.

## 7 **Affiliations**

- 8 1. Department of Cardiology, Division of Heart and Lungs, University Medical Center Utrecht, University of  
9 Utrecht, Utrecht, the Netherlands
- 10 2. Julius Center for Health Sciences and Primary Care, University Medical Center Utrecht, Utrecht University,  
11 Utrecht, the Netherlands
- 12 3. The Dutch Network for Cardiovascular Research (WCN), Utrecht the Netherlands
- 13 4. Department I for Internal Medicine, University Hospital of Cologne, University of Cologne, Cologne,  
14 Germany
- 15 5. German Center for Infection Research (DZIF), Brunswick, Germany
- 16 6. National Institute for Health University College London Hospitals, London Research Biomedical Research  
17 Centre, United Kingdom
- 18 7. Health Data Research UK and Institute of Health Informatics, University College London, London, United  
19 Kingdom
- 20 8. The Hatter Cardiovascular Institute, University College London, London, United Kingdom
- 21 9. Institute of Cardiovascular Science, Faculty of Population Health Sciences, University College London,  
22 London, United Kingdom
- 23 10. Durrer Center, Netherlands Heart Institute, Utrecht, the Netherlands
- 24 11. Department of Cardiology, Amphia Hospital, the Netherlands
- 25 12. Department of Cardiology, Erasmus MC University Medical Center, Rotterdam, the Netherlands
- 26 13. Department of Intensive Care, Erasmus MC University Medical Center, Rotterdam, the Netherlands
- 27 14. Department of Cardiology, Maasstad Hospital, Rotterdam, the Netherlands
- 28 15. Department of Respiratory and Acute Medicine, Northumbria HealthCare NHS Foundation Trust,  
29 Newcastle, United Kingdom
- 30 16. Department of Cardiology, Northumbria HealthCare NHS Foundation Trust, Newcastle, United Kingdom
- 31 17. Barts NIHR Biomedical Research Centre, William Harvey Research Institute, Queen Mary University of  
32 London, United Kingdom
- 33 18. School of Medicine, Technical University of Munich, Department of Internal Medicine II, University  
34 Hospital rechts der Isar, Munich, Germany
- 35 19. Department of Cardiovascular Sciences, University of Leicester and Cardiovascular Theme, NIHR Leicester  
36 Biomedical Research Centre, Glenfield Hospital, Leicester, United Kingdom
- 37 20. Department of Infectious Diseases and Infection Control, Ingolstadt Hospital, Ingolstadt, Germany
- 38 21. Department of Cardiology, University Hospital of Geneva, Geneva, Switzerland
- 39 22. Internal Medicine II, Department of Infectious Diseases, Freiburg University Hospital, Freiburg, Germany
- 40 23. Leeds Institute for Cardiovascular and Metabolic Medicine, University of Leeds, Leeds, United Kingdom

- 1 24. Clinic for Pneumology, Infectiology, Internal Medicine and Intensive Care, Hospital Dortmund gGmbH,
- 2 Dortmund, Germany
- 3 25. Department of Clinical Biochemistry, King Fahd Hospital of the University, Imam Abdulrahman Bin Faisal
- 4 University, Alkhobar, Saudi Arabia
- 5 26. Department of Cardiology, King Fahd Hospital of the University, Imam Abdulrahman Bin Faisal
- 6 University, Alkhobar, Saudi Arabia
- 7 27. Department of Pathology, King Fahd Hospital of the University, Imam Abdulrahman Bin Faisal University,
- 8 Alkhobar, Saudi Arabia
- 9 28. Department of Emergency Medicine, King Fahd Hospital of the University, Imam Abdulrahman Bin Faisal
- 10 University, Alkhobar, Saudi Arabia
- 11 29. Department of Critical Care, King Fahd Hospital of the University, Imam Abdulrahman Bin Faisal
- 12 University, Alkhobar, Saudi Arabia
- 13 30. Department of Internal Medicine, King Fahd Hospital of the University, Imam Abdulrahman Bin Faisal
- 14 University, Alkhobar, Saudi Arabia
- 15 31. Emergency Department, University Hospital Regensburg, Regensburg, Germany
- 16 32. NIHR Exeter Clinical Research Facility, Royal Devon and Exeter Hospital and University of Exeter College
- 17 of Medicine & Health, Exeter, United Kingdom
- 18 33. Department of Internal Medicine II, Hematology and Medical Oncology, University Hospital Jena, Jena,
- 19 Germany
- 20 34. Department of Cardiology, Franciscus Gasthuis, Rotterdam, the Netherlands
- 21 35. Department of Internal Medicine, Infectious Diseases, University Hospital Frankfurt, Goethe University
- 22 Frankfurt, Frankfurt am Main, Germany
- 23 36. Department of Cardiology, Cardiovascular Research Institute Maastricht (CARIM), Maastricht University
- 24 Medical Center, Maastricht, the Netherlands
- 25 37. Department of Cardiovascular Sciences, Centre for Molecular and Vascular Biology, KU Leuven, Belgium
- 26 38. The Netherlands Heart Institute, NL-HI, Utrecht, The Netherlands
- 27 39. Department of Intensive Care, Maastricht University Medical Centre+, Maastricht University, Maastricht,
- 28 Netherlands
- 29 40. Department of Internal Medicine, Division of General Internal Medicine, Section Geriatric Medicine,
- 30 Maastricht University Medical Center+, Maastricht, The Netherlands
- 31 41. Department of Internal Medicine II, Passau Hospital, Passau, Germany
- 32 42. World-Class Research Center Digital biodesign and personalized healthcare, I.M. Sechenov First Moscow
- 33 State Medical University, Sechenov University, Moscow, Russia
- 34 43. Department of Faculty Therapy No. 1 of N.V. Sklifosovsky Institute for Clinical Medicine, I.M. Sechenov
- 35 First Moscow State Medical University, Sechenov University, Moscow, Russia
- 36 44. University of Bochum, University Clinic for Hematology, Oncology, Hemostaseology and Palliative Care,
- 37 Minden, Germany
- 38 45. Amsterdam University Medical Center, University of Amsterdam, Heart Center; Department of Clinical and
- 39 Experimental Cardiology, Amsterdam Cardiovascular Sciences, Amsterdam, the Netherlands

- 1 46. Amsterdam University Medical Center, University of Amsterdam, Department of Clinical Epidemiology,  
2 Biostatistics & Bioinformatics, Amsterdam, the Netherlands
- 3 47. Klinikum Bremen-Mitte, Department of Internal Medicine I, Bremen, Germany
- 4 48. Department of Cardiology, St. Antonius Hospital, Nieuwegein, the Netherlands
- 5 49. Department of Gastroenterology, University Hospital Augsburg, Augsburg, Germany
- 6 50. Department of Cardiology, Catharina Hospital, Eindhoven, the Netherlands
- 7 51. Department of Educational Development and Research in the Faculty of Health, Medicine and Life  
8 Sciences, Catharina Hospital, Eindhoven, the Netherlands
- 9 52. Department of Gastroenterology and Infectiology, Hospital Ernst-von-Bergmann, Potsdam, Germany
- 10 53. Department of Medical Microbiology and Infectious Diseases, Erasmus MC, University Medical Center,  
11 Rotterdam, the Netherlands
- 12 54. Department of Infectious Diseases, University Hospital Essen, University Duisburg Essen, Essen, Germany
- 13 55. Department of Cardiology, HeartLungCenter, Leiden University Medical Center, Leiden, the Netherlands
- 14 56. Department of Internal Medicine III, Ludwig Maximilians University, Munich, Germany
- 15 57. German Cancer Consortium (DKTK), partner site Munich, Munich, Germany
- 16 58. Bavarian Center for Cancer Research (BZKF), Munich, Germany
- 17 59. Department of Cardiology, Gelre Hospital Apeldoorn, Apeldoorn, the Netherlands
- 18 60. Department of Gastroenterology and Infectiology, Heidelberg University Hospital, Heidelberg, Germany
- 19 61. Department of Cardiology, St. Jansdal Hospital, Harderwijk, the Netherlands
- 20 62. Robert-Bosch Hospital, Department of Gastroenterology, Hepatology and Endocrinology, Stuttgart,  
21 Germany
- 22 63. Department of Cardiology, Vrije Universiteit Amsterdam, Amsterdam Cardiovascular Sciences,  
23 Amsterdam, the Netherlands
- 24 64. Department of Cardiology, Dijklander Hospital, Hoorn, the Netherlands
- 25 65. Department of Internal Medicine II, Division of Infectious Diseases, University Hospital Würzburg,  
26 Würzburg, Germany
- 27 66. Department of Cardiology, Elizabeth-TweeSteden Hospital, Tilburg, the Netherlands
- 28 67. Division of Infectious Diseases, Department I of Internal Medicine, University Hospital of Cologne,  
29 University of Cologne, Cologne, Germany
- 30 68. German Center for Infection Research, Partner Site Bonn-Cologne, Cologne, Germany
- 31 69. Royal Free London NHS Foundation Trust, London, United Kingdom
- 32 70. William Harvey Research Institute, Queen Mary University of London, United Kingdom
- 33 71. Department of Intensive Care Medicine, Royal Free Hospital, Royal Free London NHS Foundation Trust,  
34 London, United Kingdom
- 35 72. Department of General, Visceral and Transplant Surgery, University Hospital Tübingen, Tübingen,  
36 Germany
- 37 73. Department of Cardiology, Hospital Group Twente, Almelo, the Netherlands
- 38 74. Department of Intensive Care, Hospital Group Twente, Almelo, the Netherlands
- 39 75. Department of Pulmonology, Hospital Group Twente, Almelo, the Netherlands
- 40 76. Municipal Hospital Karlsruhe, Karlsruhe, Germany

- 1 77. Department of Cardiology, Deventer Hospital, Deventer, the Netherlands
- 2 78. Medical Clinic I, University Hospital Erlangen, Erlangen, Germany
- 3 79. Department of Cardiology, Freeman Hospital and Newcastle University, Newcastle upon Tyne NHS
- 4 Foundation Trust, United Kingdom
- 5 80. Department of Cardiothoracic Services, Freeman Hospital and Newcastle University, Newcastle upon Tyne
- 6 NHS Foundation Trust, United Kingdom
- 7 81. National Heart and Lung Institute, Imperial College, London, United Kingdom
- 8 82. Royal Brompton Hospital, London, United Kingdom
- 9 83. University Hospital Ulm, Division of Infectious Diseases, Clinic of Internal Medicine III
- 10 84. Department of Cardiology, Jeroen Bosch Hospital, 's-Hertogenbosch, the Netherlands
- 11 85. 4th Department of Internal Medicine, Hospital Leverkusen gGmbH, Leverkusen, Germany
- 12 86. Intensive Care Department, Salford Royal NHS Foundation Trust, Salford, United Kingdom
- 13 87. Division of Cardiology, Hospital Maria Hilf Mönchengladbach, Mönchengladbach, Germany
- 14 88. Department of Cardiology, Zaans Medical Center, Zaandam, The Netherlands
- 15 89. Department of Neurology, Katholisches Klinikum Bochum, Ruhr University Bochum, Bochum, Germany
- 16 90. Department of Cardiology, Meander Medical Center, Amersfoort, the Netherlands
- 17 91. Bundeswehr Central Hospital, Koblenz, Germany
- 18 92. Department of Cardiology, Haaglanden Medical Center, the Hague, the Netherlands
- 19 93. Evangelical City Hospital Saarbrücken, Saarbrücken, Germany
- 20 94. Department of Cardiology, Groene Hart Hospital, Gouda, the Netherlands
- 21 95. Tropical Clinic Paul-Lechler Hospital Tübingen, Tübingen, Germany
- 22 96. Department of Cardiology, A.O.U. San Luigi Gonzaga, Orbassano, Turin, Italy
- 23 97. Electrophysiology Unit, Department of Cardiology, A.O.U. San Luigi Gonzaga, Orbassano, Turin, Italy
- 24 98. Intensive Coronary Care Unit, Department of Cardiology, A.O.U. San Luigi Gonzaga, Orbassano, Turin,
- 25 Italy
- 26 99. Medical Department I, Marien Hospital Herne, Ruhr-University Bochum, Germany
- 27 100. Department of Cardiovascular Research, Tehran Heart Center, Cardiovascular Diseases Research Institute,
- 28 Tehran University of Medical Sciences, Tehran, Iran
- 29 101. Department of Cardiology, Tehran Heart Center, Cardiovascular Diseases Research Institute, Tehran
- 30 University of Medical Sciences, Tehran, Iran
- 31 102. Department of Nursing, Tehran Heart Center, Cardiovascular Diseases Research Institute, Tehran
- 32 University of Medical Sciences, Tehran, Iran
- 33 103. Department of Interventional Cardiology, Tehran Heart Center, Cardiovascular Diseases Research
- 34 Institute, Tehran University of Medical Sciences, Tehran, Iran
- 35 104. Department of Gastroenterology, Hepatology and Infectious Diseases, University Hospital Düsseldorf,
- 36 Heinrich-Heine-University, Düsseldorf, Germany
- 37 105. Department of Cardiology, CHU UCL Namur site Godinne, Université Catholique de Louvain, Yvoir,
- 38 Belgium
- 39 106. Department of Infectious Diseases and Clinical Microbiology, Hacettepe University School of Medicine,
- 40 Ankara, Turkey

- 1 107. Department of Cardiology, Zuyderland Medical Center, Heerlen, the Netherlands
- 2 108. Department of Internal Medicine, Hematology and Oncology, Elbland Hospital Riesa, Riesa, Germany
- 3 109. Department of Cardiology, Heart Center Hasselt, Jessa Hospital, Hasselt, Belgium
- 4 110. Department of Infectious Diseases & Immunity, Jessa Hospital, Hasselt, Belgium
- 5 111. Faculty of Medicine and Life Sciences, Hasselt University, Hasselt, Belgium
- 6 112. Department of Internal Medicine I, University Medical Center Schleswig-Holstein, Kiel, Germany
- 7 113. Department of Cardiology, Medical Center Leeuwarden (MCL), Leeuwarden, the Netherlands
- 8 114. Department of Medicine II, Section of Infectious Diseases, Justus-Liebig-University Giessen, Germany,
- 9 member of the German Lung Center (DZL)
- 10 115. Intensive Care Unit, Hospital do Espírito Santo, Évora, Portugal
- 11 116. Division of Infectious Diseases, University Hospital Carl Gustav Carus, Technical University of Dresden,
- 12 Dresden, Germany
- 13 117. Department of Cardiology, Franciscus Vlietland, Schiedam, The Netherlands
- 14 118. Medical Clinic V, Nephrology, Rheumatology, Blood Purification, Academic Teaching Hospital
- 15 Braunschweig, Braunschweig, Germany
- 16 119. Arrhythmias Unit, Department of Cardiology, Hospital Universitario Virgen de las Nieves, Granada, Spain
- 17 120. Munich Clinic Schwabing, Munich, Germany
- 18 121. Department of Cardiology, E.M.M.S Hospital, Nazareth, Israel
- 19 122. Section of Fibrotic Lung Diseases, University Hospital Giessen and Marburg, Giessen Campus, Justus
- 20 Liebig University Giessen, University of Giessen Marburg Lung Center, as well as the Fulda Campus of the
- 21 Medical University of Marburg, Med. Clinic V, Member of German Center for Lung Research Giessen,
- 22 Germany
- 23 123. Department of Cardiology, Admiraal de Ruyter Hospital, Goes, the Netherlands
- 24 124. Agaplesion Diaconia Hospital Rotenburg, Rotenburg, Germany
- 25 125. Department of Internal Medicine, Antonius Hospital, Sneek, the Netherlands
- 26 126. Department of Pneumology, Allergy, Sleep and Intensive Care Medicine, Petrus Hospital Wuppertal,
- 27 University of Witten-Herdecke, Wuppertal, Germany
- 28 127. Department of Cardiology, Hospital Professor Doutor Fernando Fonseca, Amadora, Portugal
- 29 128. Elisabeth Hospital, Essen, Germany
- 30 129. Department of Cardiology, Albert Schweitzer Hospital, Dordrecht, the Netherlands
- 31 130. Malteser Hospital St. Franziskus-Hospital Flensburg, Flensburg, Germany
- 32 131. Department of Internal Medicine, Clinic University Hospital, INCLIVA Health Research Institute,
- 33 Valencia, Spain
- 34 132. Department of Medicine, School of Medicine, University of Valencia, Valencia, Spain
- 35 133. Sophien- and Hufeland Clinic Weimar, Weimar, Germany
- 36 134. Department of Cardiology, van Weel-Bethesda Hospital, Dirksland, the Netherlands
- 37 135. Department of Internal Medicine I, Department of Gastroenterology, Hepatology, Nephrology,
- 38 Infectiology, Endocrinology and Diabetology, University Hospital Bonn, Bonn, Germany
- 39 136. Department of Intensive Care, Rode Kruis Hospital, Beverwijk, the Netherlands
- 40 137. Department of Cardiology, Rode Kruis Hospital, Beverwijk, the Netherlands



- 1 138. Helios Hospital Pirna, Pirna, Germany
- 2 139. Department of Pulmonology, Antwerp University Hospital, Edegem, Belgium
- 3 140. Department of General Internal Medicine, Infectious Diseases and Tropical Medicine, Antwerp University
- 4 Hospital, Edegem, Belgium
- 5 141. Department of Cardiology, Antwerp University Hospital, Edegem, Belgium
- 6 142. Hospital St. Joseph-Stift Dresden, Dresden, Germany
- 7 143. Department of Cardiology, AZ Maria Middelaers, Ghent, Belgium
- 8 144. Department of Internal Medicine, Ghent University, Ghent, Belgium
- 9 145. Oberlausitz Hospital, Germany
- 10 146. Department of Cardiology, Saxenburgh Medical Center, Hardenberg, the Netherlands
- 11 147. Craigavon Area Hospital, Southern Care & Social Care Trust Hospitals, Portadown, Northern Ireland
- 12 148. Benha Faculty of Medicine, Benha, Egypt
- 13 149. Department of Cardiology, SSR Val Rosay, Saint Didier au Mont d'Or, France
- 14 150. Department of Pulmonology, Bravis Hospital, Roosendaal, the Netherlands
- 15 151. Department of Cardiology, Bravis Hospital, Roosendaal, the Netherlands
- 16 152. Department of Intensive Care, Martini Hospital, Groningen, the Netherlands
- 17 153. Department of Cardiology, LangeLand Hospital, Zoetermeer, the Netherlands
- 18 154. Department of Pulmonology, Medisch Spectrum Twente, Enschede, the Netherlands
- 19 155. Department of Internal Medicine and Infectious Diseases, Medisch Spectrum Twente, Enschede, the
- 20 Netherlands
- 21 156. Department of Cardiology, Thorax Center Twente, Medisch Spectrum Twente, Enschede, the Netherlands
- 22 157. Department of Cardiology, Bernhoven Hospital, Uden, the Netherlands
- 23 158. Department of Cardiology, CHVZ, University Hospital Brussels, Jette, Belgium
- 24 159. Department of Cardiology, Isala Hospital, Zwolle, the Netherlands
- 25 160. Department of Cardiology, Ikazia Hospital, Rotterdam, the Netherlands
- 26 161. Department of Cardiology, Gelre Hospital Zutphen, Zutphen, the Netherlands
- 27 162. Department of Gynecology, Amstelland Hospital, Amstelveen, the Netherlands
- 28 163. Department of Cardiology, Slingeland Hospital Doetinchem, the Netherlands
- 29 164. Department of Cardiology, Treant Zorggroep, Emmen, the Netherlands
- 30 165. NIHR Bristol Cardiovascular Biomedical Research Centre, Cardiac Magnetic Resonance Department,
- 31 Bristol Heart Institute, University Hospitals Bristol NHS Foundation Trust, Bristol, United Kingdom
- 32 166. University Hospitals Bristol and Weston NHS Foundation Trust, Bristol, United Kingdom
- 33 167. Bristol Medical School, University of Bristol, Bristol, United Kingdom
- 34 168. Department of Cardiology, Beatrix Hospital, Gorinchem, the Netherlands
- 35 169. Department of Cardiology, Spaarne Gasthuis, Haarlem, the Netherlands
- 36 170. Department of Cardiology, Diaconessenhuis, Utrecht, the Netherlands
- 37 171. Department of Pulmonology, Diaconessenhuis, Utrecht, the Netherlands
- 38 172. Department of Cardiology, Rijnstate Hospital, Arnhem, the Netherlands
- 39 173. Barts Life Sciences, Barts Health NHS Trust, London, United Kingdom

- 1 174. Department of Internal Medicine, Hematology and Oncology, Goethe University Frankfurt, Frankfurt,
- 2 Germany
- 3 175. Department of Cardiology, University Medical Center Groningen, Groningen, the Netherlands
- 4 176. Department of Cardiology, Martini Hospital, Groningen, the Netherlands
- 5 177. Department of Cardiology, Functional and and Ultrasound Diagnostics of N.V. Sklifosovsky Institute for
- 6 Clinical Medicine, I.M. Sechenov First Moscow State Medical University, Sechenov University, Moscow,
- 7 Russia
- 8 178. Department of Emergency, Tehran Heart Center, Cardiovascular Diseases Research Institute, Tehran
- 9 University of Medical Sciences, Tehran, Iran
- 10 179. Department of Cardiology, One Day Surgery Hospital, Cairo, Egypt
- 11 180. COVID-19 Unit, SSR Val Rosay, Saint Didier au Mont d'Or, France
- 12 181. Department of Rheumatology and Clinical Immunology, Medisch Spectrum Twente, Enschede, the
- 13 Netherlands
- 14 182. Research Department, Bernhoven Hospital, Uden, the Netherlands
- 15 183. Department of Cardiology, Amstelland Hospital, Amstelveen, the Netherlands
- 16