

1 **Title page**

2 **Article type:** Short Report

3 **Article title:** Environmental drivers of SARS-CoV-2 lineage B.1.1.7 transmission inten-
4 sity

5 **Running head:** SARS-CoV-2 B.1.1.7's temperature response

6 **Authors:** Thomas P. Smith^{1,*}, Ilaria Dorigatti², Swapnil Mishra², Erik Volz², Patrick
7 G. T. Walker², Manon Ragonnet-Cronin², Michael Tristem¹, William D. Pearse^{1,3*}

8 ¹ Department of Life Sciences, Imperial College London, Silwood Park, Ascot, Berkshire,
9 SL5 7PY, UK

10 ² MRC Centre for Global Infectious Disease Analysis, Imperial College London, Norfolk
11 Place, London, W2 1PG, UK

12 ³ Department of Biology & Ecology Center, Utah State University, 5305 Old Main Hill,
13 Logan UT, 84322

14 *To whom correspondence should be addressed: `thomas.smith1@imperial.ac.uk` and
15 `will.pearse@imperial.ac.uk`

16 **Keywords:** SARS-CoV-2; lineage B.1.1.7; transmission; environment; population den-
17 sity; climate

18 **We emphasise that this pre-print manuscript has not been peer-reviewed, and**
19 **thus its findings should be considered, at best, preliminary.**

20 Abstract

21 Previous work has shown that environment affects SARS-CoV-2 transmis-
22 sion, but it is unclear whether emerging strains show similar responses. Here
23 we show that, like other SARS-CoV-2 strains, lineage B.1.1.7 spread with
24 greater transmission in colder and more densely populated parts of England.
25 However, we also find evidence of B.1.1.7 having a transmission advantage
26 at warmer temperatures compared to other strains. This implies that spring
27 and summer conditions are unlikely to slow B.1.1.7's invasion in Europe and
28 across the Northern hemisphere - an important consideration for public health
29 interventions.

30 Introduction

31 A year into the COVID-19 pandemic, quantifying the factors driving SARS-CoV-2 trans-
32 mission is still key for the optimal implementation of control strategies. SARS-CoV-2
33 transmission is influenced by local environmental conditions (Poirier et al., 2020), and
34 we have previously shown that colder temperatures and higher population densities ex-
35 plain spatial and temporal variation in transmission intensity (Smith et al., 2020). A
36 critical insight from previous work has been that human behaviour drives SARS-CoV-2
37 transmission, and that environment only plays a marginal effect when effective non-
38 pharmaceutical interventions (NPIs) are in place (Poirier et al., 2020, Smith et al., 2020).
39 While several studies have investigated the impact of environmental factors on SARS-
40 CoV-2 transmission during the early stages of the pandemic, numerous new variants have
41 recently emerged (in, for example, the UK; Rambaut et al. 2020, Brazil; Voloch et al.
42 2020, and South Africa; Tegally et al. 2020) with greater transmissibility than strains
43 present during the early stages of the pandemic (Faria et al., 2021, Volz et al., 2021).
44 Any effect of environment must therefore be re-assessed in the context of a landscape of
45 emerging viral lineages.

46 The UK SARS-CoV-2 ‘Variant of Concern’ (VOC; also known as lineage B.1.1.7; Ram-
47 baut et al., 2020) rapidly spread through the UK population in late 2020, showing greater
48 transmission intensity (as measured by the reproduction number, R) than other circulat-
49 ing strains (Volz et al., 2021). The wealth of data collected for this strain makes the VOC
50 a strong test-case for investigating environmental effects in the context of emerging lin-
51 eages. To assess the impact of environment on VOC transmission, we extracted weekly R
52 estimates calculated for fine-grained regions of England (Lower Tier Local Authorities—
53 LTLAs; Mishra et al., 2020), and regressed these against VOC frequency, temperature,
54 and population density for each LTLA. We assessed the impact of the environment by
55 investigating the association between weekly R estimates and the predictors (i.e., spa-
56 tial variation in R), for sequential weeks. To account for the VOC’s emergence in the
57 South-East (which is among the warmest and most densely populated parts of England),

58 and its subsequent spread into colder, less densely populated parts of the country, we
59 incorporated interactions between VOC frequency and each of temperature and popula-
60 tion density. Without including this interaction, any effect of temperature or population
61 density on R might be compounded or masked by spatial autocorrelation with VOC fre-
62 quency. Following Volz et al. (2021), we measured the effects of the weekly predictors on
63 R in the subsequent week, to account for the generation time of SARS-CoV-2.

64 **Results and Discussion**

65 As observed by Volz et al. (2021), we find a strong positive effect of VOC frequency
66 on transmission intensity, particularly during the initial emerging phase when VOC fre-
67 quency was less consistent among regions (Table 1). While the UK’s national lockdown
68 initially decreased SARS-CoV-2 transmission intensity, as the VOC spread, R increased
69 across regions (Figure 1). We find that the impact of the environment on transmission
70 is mediated by VOC frequency, and it is only at higher VOC frequencies that the effects
71 of temperature and population density are pronounced (Table 2 and Figure 1). Fur-
72 thermore, we find a greater environmental effect after the UK moved from full lockdown
73 to a (less strict) tiered system, confirming our previous observations that the effect of
74 temperature becomes pronounced when NPIs are relaxed (Smith et al., 2020). Thus, the
75 effects of environmental drivers, and even those of the increased transmissibility of the
76 VOC, are secondary to differences in human behaviour driven by differences in NPIs. As
77 the VOC has spread to dominate the country’s viral population, we now expect envi-
78 ronmental factors to become the dominant driver of spatial variation in R , with colder
79 areas facing higher transmission intensities than warmer regions, unless NPIs or the ac-
80 cumulation of immunity (either naturally acquired or vaccine derived) sufficiently reduce
81 transmission.

82 To investigate the potential role of immunity in our results, we perform a sensitivity anal-
83 ysis and re-run our regression analyses on R estimates corrected for the relative attack
84 rate (AR) estimates. This accounts for the potential slowdown in R due to the accumu-

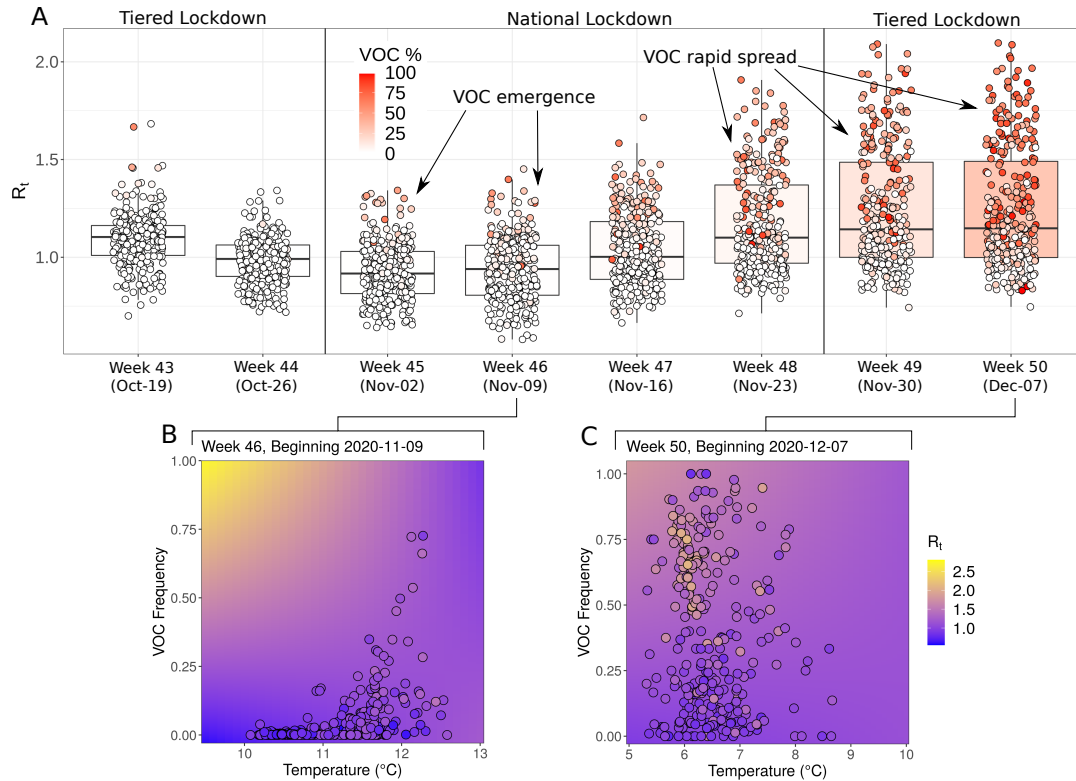


Figure 1: **Transmission dynamics during emergence and spread of SARS-CoV-2 lineage B.1.1.7.** **A.** Median (bold) and interquartile range (box) of the transmission intensity estimates (R) for weeks 43-50 of 2020, with point estimates for each LTLA overlaid. Points are coloured by the frequency of the VOC in positive COVID-19 tests (%), boxplots are coloured by the median VOC frequency across all LTLAs. The first date of each week is given within parentheses. As the VOC emerged, the UK entered a national lockdown, leading to an initial decrease in R across regions. However, as the VOC spread through space to become the dominant lineage, R increased across regions despite the national lockdown. When the UK re-entered a tiered NPI system on the 2nd of December 2020, average R further increased across regions. Panels **B** and **C** show the observed (points) and expected (background) effects of temperature and VOC frequency on R during early (week 46) and late (week 50) phases of the variant sweep, respectively (legend shared across both plots).

85 lation of natural immunity across the population through time. We obtain qualitatively
 86 identical results in the AR-corrected analyses, but generally lower correlation (additive
 87 decrease in of 16% in weeks 45 and 46) as the VOC emerged, versus in the later stages
 88 (average decrease in of only 3%, Supplementary Table S1). Note that the time-frame of
 89 our analyses was prior to mass vaccination of the UK public and even in the latest time-
 90 point (week 50), median attack rate across regions was less than 10% (Supplementary
 91 Figure S1).

Table 1: **VOC frequency is the strongest driver of transmission during early stages of the VOC sweep (week 46, starting 9 November 2020).** Linear regression model with VOC frequency, temperature, and population density as predictors of R_t , $r^2 = 48\%$, $F_{5,293} = 53.5$, $p < 0.001$. Predictors were scaled to have mean = 0 and SD = 1 and thus coefficients are measures of the relative importance of each variable. Frequency of the variant is a comparably strong driver of R . * = $p < 0.05$.

	Coefficient	Std. Error	t value	p value
Intercept	0.97	0.11	8.53	< 0.001*
VOC Frequency	0.62	0.17	3.54	< 0.001*
Temperature	0.10	0.09	1.17	0.244
\log_{10} (Pop density)	-0.03	0.02	-1.83	0.067
VOC×Temp	-0.40	0.13	-3.02	0.003*
VOC×Pop	-0.01	0.03	-0.42	0.677

Table 2: **Both temperature and population density significantly interact with VOC frequency during late stages of the VOC sweep (week 50, starting 7 December 2020).** $r^2 = 55\%$, $F_{5,298} = 71.6$, $p < 0.001$. Predictors were scaled to have mean = 0 and SD = 1. Significant interaction effects between variant frequency and environmental parameters are observed. Significant interactions show that at high VOC frequencies, there is a negative effect of temperature and a positive effect of population density on R_t . * = $p < 0.01$.

	Coefficient	Std. Error	t value	p value
Intercept	1.12	0.06	19.0	< 0.001*
VOC Frequency	0.06	0.05	1.24	0.216
Temperature	0.02	0.05	0.34	0.736
\log_{10} (Pop density)	0.02	0.02	1.17	0.244
VOC×Temp	-0.09	0.04	-2.07	0.039*
VOC×Pop	0.06	0.01	5.75	< 0.001*

92 We additionally investigated whether the VOC may respond differently to the environ-
93 ment as compared to non-VOC strains. Volz et al. (2021) estimated the transmission
94 intensity of VOC vs non-VOC strains and here we regressed the ratios of VOC R to non-
95 VOC R against temperature, to understand under which environmental conditions the
96 VOC may have an advantage. This was performed at a larger spatial scale than our LTLA
97 analyses (English NHS sustainability and transformation partnerships – STP regions).
98 We found a small, positive correlation between temperature and the R ratio (Supple-
99 mentary Table S2), *i.e.*, at warmer temperatures the VOC was even more transmissible
100 than non-VOC strains, than in colder conditions. This may be expected, as differences in
101 fitness between strains are likely to be magnified in harsher environments where fitness
102 is reduced overall (Soberon and Peterson, 2005). This effect may have played into the

103 dynamics of the spread of the VOC in the South East of England by enhancing its spread
104 even more in regions where previous strains' transmission intensities were lower.

105 Whereas, previously, a central question has been whether winter conditions would en-
106 hance SARS-CoV-2 transmission, in the context of these new strains it is important to
107 ask whether warmer summer conditions could slow transmission. Here we have shown
108 that temperature can drive variation in transmission intensity between regions and be-
109 tween variants, but this effect is likely secondary to the overall increased transmission
110 intensity of the new variant. Our results show that variant B.1.1.7 is more transmissible
111 in colder areas. Using the model fitted to the week 50 data, our results suggest that
112 when the variant accounts for 100% of SARS-CoV-2 cases in the population, R increases
113 by approximately 0.12 per °C of temperature decrease. However, we also find that in
114 warmer conditions, the difference in transmissibility between VOC and non-VOC strains
115 is greater. Our results suggest that for each °C of temperature increase, the ratio of VOC
116 to non-VOC R may increase by approximately 0.12-0.22 (Supplementary Table S2).

117 While we caution against extrapolating from winter to summer conditions, our results
118 highlight that there is no reason to suppose that summer weather alone will slow down
119 the invasion dynamics of B.1.1.7 and significantly reduce the transmission intensity of
120 SARS-CoV-2. Thus, it is imperative to quantify and continue to monitor the impact
121 of interventions (*e.g.*, vaccines and NPIs) to inform policy. In that regard, the speed
122 with which the VOC has spread through the UK, while concerning from a public health
123 perspective, provides the perfect opportunity to parameterise models of its responses.
124 Importantly in the context of new strains, transmission of respiratory viruses in tropical
125 climates (such as Brazil, where a new variant has arisen; Voloch et al., 2020) are often more
126 sensitive to rainfall than temperature (Pica and Bouvier, 2012). Better characterisation
127 of past, and new potential relationships between environment and transmission, as new
128 variants emerge and spread internationally, is a research priority.

129 **Materials and Methods**

130 **Epidemiological data collection**

131 Weekly transmission intensity (R) estimates for each of England’s lower-tier local au-
132 thorities (LTLAs) were obtained from a Bayesian epidemiological model (Mishra et al.,
133 2020). The weekly VOC frequencies were calculated for each LTLA as the percentage of
134 true positive rate (TPR)-adjusted S-gene target negative test to positive test results, as
135 in Volz et al. (2021). Estimates of R for VOC and non-VOC strains for England’s NHS
136 sustainability and transformation partnerships (STPs) were obtained from Volz et al.
137 (2021).

138 **Environmental data collection**

139 Population density and daily temperature data were computed for LTLAs and STPs using
140 the same methods as Smith et al. (2020). Briefly, we collected global population den-
141 sity data from the Center for International Earth Science Information Network (CIESIN)
142 (2018), and hourly temperature (T) estimates from the Copernicus Climate Change Ser-
143 vice (2020) at a $0.25 \times 0.25^\circ$ spatial resolution. The Climate Data Operators program
144 Schulzweida (2019) was used to to compute daily means from the hourly temperatures,
145 which were subsequently combined into weekly means. We then averaged the population
146 density and temperature values (median) across each spatial unit (LTLAs or STPs) given
147 in shapefiles acquired from the The Open Geography portal from the Office for National
148 Statistics (<https://geoportal.statistics.gov.uk/>).

149 **Regression analysis of environmentally driven transmission**

150 We performed multiple linear regression on R estimates with VOC frequency, temperature
151 and population density as predictors, allowing for interactions between VOC frequency
152 and each of the other predictors, *i.e.*:

$$R_t = \alpha + \beta_1(\text{VOC frequency}) + \beta_2(\text{temperature}) + \beta_3(\log_{10}(\text{Population density})) + \beta_4(\text{VOC frequency} \times \text{temperature}) + \beta_5(\text{VOC frequency} \times \log_{10}(\text{Population density})) + \epsilon \quad (1)$$

153 This was performed separately for sequential weeks, with the weekly predictors regressed
 154 against R estimates for the subsequent week, to account for the generation time of SARS-
 155 CoV-2.

156 **Sensitivity analysis using attack rates**

157 As the virus spreads through the population, so background immunity increases in the
 158 population and thus there are fewer potential targets for the virus to infect, ultimately
 159 leading to a reduction in the transmission rate. If the effect of immunity is suitably
 160 large, this may impact our results. We therefore performed a sensitivity analysis on
 161 our regression analyses by correcting the R estimates by the attack rate (AR), which
 162 is the cumulative infections per population in each area. We calculated corrected- R_t as
 163 $\frac{R_t}{1-\text{AR}}$ and used this as the outcome variable in our regression models (supplementary
 164 information).

165 **Regression analysis of variant transmission rate**

166 To test whether there were differences in the environmental responses of VOC transmis-
 167 sion version non-VOC transmission rates, we regressed the ratio of VOC to non-VOC R
 168 against temperature. We used two types of models, one with a fixed effect for each area
 169 (STP regions) and one with a random effect for area. These models were fit jointly to
 170 the data across weeks 45-50 and fixed effects of the epidemiological week were included
 171 in both cases (supplementary information).

172 **Data and code availability**

173 All code to replicate these analyses and associated data are available from the following
174 github repository: <https://github.com/smithtp/covid19-variant-N501Y>

175 **References**

176 Center for International Earth Science Information Network (CIESIN). “Gridded Pop-
177 ulation of the World, Version 4 (GPWv4): Population Density, Revision 11”. 2018.
178 URL <https://doi.org/10.7927/H49C6VHW>.

179 Copernicus Climate Change Service. “Essential climate variables for assessment of climate
180 variability from 1979 to present”. 2020. URL [https://cds.climate.copernicus.eu/
181 cdsapp#!/dataset/ecv-for-climate-change](https://cds.climate.copernicus.eu/cdsapp#!/dataset/ecv-for-climate-change).

182 Faria, N.R., Mellan, T.A., Whittaker, C., Claro, I.M., Candido, D.d.S., et al. “Genomics
183 and epidemiology of a novel SARS-CoV-2 lineage in Manaus , Brazil”. *medRxiv*, 2021.

184 Mishra, S., Scott, J., Zhu, H., Ferguson, N.M., Bhatt, S., and Gandy, A. “A COVID-19
185 Model for Local Authorities of the United Kingdom”. *medRxiv*, 2020.

186 Pica, N. and Bouvier, N.M. “Environmental factors affecting the transmission of respi-
187 ratory viruses”. *Current Opinion in Virology*, 2(1):90–95, 2012.

188 Poirier, C., Luo, W., Majumder, M., Liu, D., Mandl, K., et al. “The Role of Environmen-
189 tal Factors on Transmission Rates of the COVID-19 Outbreak: An Initial Assessment
190 in Two Spatial Scales.” *Scientific Reports*, 2020.

191 Rambaut, A., Loman, N., Pybus, O., Barclay, W., Barrett, J., et al. “Preliminary genomic
192 characterisation of an emergent SARS-CoV-2 lineage in the UK defined by a novel set
193 of spike mutations”. 2020. URL <https://virological.org/t/563>.

194 Schulzweida, U. “CDO User Guide (Version 1.9.8)”. 2019.

195 Smith, T.P., Flaxman, S., Gallinat, A.S., Kinosian, S.P., Stemkovski, M., et al. “En-
196 vironment influences SARS-CoV-2 transmission in the absence of non-pharmaceutical
197 interventions”. *medRxiv*, 2020.

198 Soberon, J. and Peterson, A.T. “Interpretation of models of fundamental ecological niches
199 and species’ distributional areas”. *Biodiversity Informatics*, 2, 2005.

200 Tegally, H., Wilkinson, E., Giovanetti, M., Iranzadeh, A., Fonseca, V., et al. “Emergence
201 and rapid spread of a new severe acute respiratory syndrome-related coronavirus 2
202 (SARS-CoV-2) lineage with multiple spike mutations in South Africa”. *medRxiv*, 2020.

203 Voloch, C.M., da Silva F Jr, R., de Almeida, L.G.P., Cardoso, C.C., Brustolini, O.K.,
204 et al. “Genomic characterization of a novel SARS-CoV-2 lineage from Rio de Janeiro,
205 Brazil”. *medRxiv*, 2020.

206 Volz, E., Mishra, S., Chand, M., Barrett, J.C., Johnson, R., et al. “Transmission of
207 SARS-CoV-2 Lineage B.1.1.7 in England: Insights from linking epidemiological and
208 genetic data”. *medRxiv*, 2021.