

1 **COVID-19 mRNA Vaccination in Lactation: Assessment of adverse effects and**  
2 **transfer of anti-SARS-CoV2 antibodies from mother to child**

3  
4 Yarden Golan, Ph.D.<sup>1</sup>, Mary Prahl, M.D.<sup>2,3</sup>, Arianna G. Cassidy, M.D.<sup>4</sup>, Caryl Gay Ph.D.  
5 <sup>5</sup>, Alan H.B. Wu, Ph.D.<sup>6</sup>, Unurzul Jigmeddagva, M.D.<sup>7</sup>, Christine Y. Lin<sup>4</sup>, Veronica J.  
6 Gonzalez, M.D.<sup>4</sup>, Emilia Basilio, M.D, M.P.H<sup>4</sup>, Lakshmi Warriar<sup>8</sup>, Sirirak Buarpung,  
7 D.V.M., Ph.D.<sup>4</sup>, Lin Li, M.D., Ph.D.<sup>4</sup>, Ifeyinwa V. Asiodu, Ph.D, R.N.<sup>5</sup>, Nadav Ahituv,  
8 Ph.D.<sup>1</sup>, Valerie J. Flaherman, M.D., M.P.H.<sup>2</sup>, Stephanie L. Gaw, M.D., Ph.D.<sup>4,7</sup>

9  
10 Author Affiliations

11 <sup>1</sup> Department of Bioengineering and Therapeutic Sciences, University of California, San  
12 Francisco, CA, 94158 and Institute for Human Genetics, University of California, San  
13 Francisco, California, United States of America.

14 <sup>2</sup> Department of Pediatrics, University of California, San Francisco, California, United  
15 States of America.

16 <sup>3</sup> Division of Pediatric Infectious Diseases and Global Health, University of California,  
17 San Francisco, California, United States of America.

18 <sup>4</sup> Division of Maternal-Fetal Medicine, Department of Obstetrics, Gynecology, and  
19 Reproductive Sciences, University of California San Francisco, California, United States  
20 of America.

21 <sup>5</sup> Department of Family Health Care Nursing, University of California, San Francisco,  
22 California, United States of America.

23 <sup>6</sup> Department of Laboratory Medicine, University of California, San Francisco, California,  
24 United States of America.

25 <sup>7</sup> Center for Reproductive Sciences, Department of Obstetrics, Gynecology, and  
26 Reproductive Sciences, University of California San Francisco, California, United States  
27 of America.

28 <sup>8</sup> Department of Medicine, University of California, San Francisco, California, United  
29 States of America.

30 Corresponding author: Stephanie L. Gaw- Division of Maternal-Fetal Medicine,  
31 Department of Obstetrics, Gynecology, and Reproductive Sciences, University of  
32 California San Francisco, 513 Parnassus Ave, HSE16, Box 0556, San Francisco, CA  
33 94143. Phone: 415.476.0535. Email: Stephanie.Gaw@ucsf.edu

34

35

36 **Conflict of interest:**

37 The authors have declared that no conflict of interest exists.

38

39

40

41 **Abstract:**

42 **Background:** Data regarding the rate of adverse effects observed in the lactating  
43 mother-infant dyad and their immune response to COVID-19 mRNA vaccination during  
44 lactation are needed to inform vaccination guidelines.

45 **Methods:** From a prospective cohort of 50 lactating individuals who received mRNA-  
46 based vaccines for COVID-19 (mRNA-1273 and BNT162b2), blood and milk samples  
47 were collected prior to first vaccination dose, immediately prior to 2nd dose, and 4-10  
48 weeks after 2nd dose. Symptoms in mother and infant were assessed by detailed  
49 questionnaires. Anti-SARS-CoV-2 antibody levels in blood and milk were measured by  
50 Pylon 3D automated immunoassay and ELISA, and PEGylated proteins in milk were  
51 measured by ELISA. Blood samples were collected from a subset of infants whose  
52 mothers received the vaccine during lactation or pregnancy (4-15 weeks after mothers'  
53 2nd dose).

54 **Results:** No severe maternal or infant adverse effects were reported in this cohort. Two  
55 mothers and two infants were diagnosed with COVID-19 during the study period.  
56 Vaccine-related products, PEGylated proteins, were not found at significant levels in  
57 milk after vaccination. After vaccination, levels of anti-SARS-CoV-2 IgG and IgM  
58 significantly increased in maternal plasma and there was significant transfer of anti-  
59 SARS-CoV-2-Receptor Binding Domain (anti-RBD) IgA and IgG antibodies to milk. Milk  
60 IgA levels after 2nd dose were negatively associated with infant age. Anti-SARS-CoV-2  
61 IgG antibodies were not detected in the plasma of infants whose mothers were  
62 vaccinated during lactation.

63 **Conclusions:** COVID-19 mRNA vaccines generate robust immune responses in  
64 plasma and milk of lactating individuals without severe adverse effects reported.

65

66

67 **Introduction:**

68 An important benefit of human milk is the presence of IgA and IgG antibodies that  
69 provide passive immunity to the infant (1, 2). Anti-SARS-CoV-2 antibodies are present  
70 in milk from lactating women who were infected with SARS-CoV-2 (3, 4) or who  
71 received COVID-19 mRNA vaccines (5–8). Specifically, high titers of anti-SARS-CoV-2  
72 IgG were reported after vaccination(6). The function of these antibodies in protection of  
73 infants against COVID-19 is not fully understood. Recently, work has demonstrated that  
74 murine pups can transfer IgG antibodies from ingested milk to their bloodstream, via  
75 enteric Fc receptors (9); however, this phenomenon has not been demonstrated in  
76 humans. To better understand the function and distribution if human milk antibodies and  
77 infant immunization after maternal vaccination, we examine anti-SARS-CoV-2 antibody  
78 levels in infant stool and blood. In addition, information is lacking on the potential  
79 adverse effects of COVID-19 vaccination on lactating mothers and their infants, who  
80 were excluded from initial clinical trials of mRNA vaccination (10). Many breastfeeding  
81 individuals have concerns regarding the potential effects on their infant due to the lack  
82 of data, leading to delayed vaccination or early cessation of breastfeeding (11).

83 In this study, we examined blood and milk samples from lactating mothers who received  
84 a COVID-19 mRNA vaccine and their infants for the presence of anti- SARS-CoV2  
85 antibodies, presence of PEGylated protein vaccine products, and self-reported vaccine-  
86 related symptoms in order to address the gap of knowledge regarding vaccination  
87 efficacy and safety in this population.

88

89 **Results:**

90 **Participant characteristics.** During the study period, 50 participants answered all  
91 study questionnaires, provided blood and/or milk samples, had an infant up to 18  
92 months old and were included in this analysis. Two infants were diagnosed with COVID-  
93 19 during this study (**Table S1**, infant of participants 1 and 2). One mother reported that  
94 her infant had mild symptoms 1 week after the 2nd dose; this infant's vaccinated mother  
95 had a negative test at the time of the infant's positive PCR test. A second infant had  
96 positive plasma anti-SARS-CoV-2 IgG and IgA, despite the mother receiving the  
97 vaccine postpartum and reported no known prior COVID-19 infection. The mother's  
98 plasma was subsequently found to be positive to antibodies against SARS-CoV-2  
99 nucleocapsid protein, indicating a likely natural asymptomatic SARS-CoV-2 infection  
100 (further details in **Table S1**). Two mothers were positive for COVID-19 and are  
101 presented in **Table S1** (participants 2 and 3); they were excluded from further analysis  
102 of symptomatology. Cohort characteristics are presented in **Table 1**. Twenty-seven  
103 female participants (mean age 35.7 years ( $\pm$  3.9)) received the BNT162b2 vaccine  
104 (Pfizer, 56%), and 21 received the mRNA-1237 (Moderna, 44%). The mean infant age  
105 at mother's 1st dose was 5 months ( $\pm$ 3.9). All mothers continued to feed their infants  
106 with milk at the time of the 2nd vaccination, and all except one continued up to the time  
107 of follow up sample collection (4-10 weeks after 2nd dose). There were no significant  
108 differences in maternal or infant characteristics by vaccine manufacturer.

109

110 **Post vaccination symptoms.** Self-reported symptoms after each vaccine dose are  
111 presented in **Table 2**. Fever, chills, headache, joint pain, muscle aches or body aches,  
112 and fatigue or tiredness were reported by significantly more participants after the 2nd  
113 dose than after the 1st dose (**Table 2**). All 21 participants (100%) who received the  
114 mRNA-1237 vaccine reported injection site symptoms, while only 21 (78%) of 27 BNT-  
115 162b2 recipients reported injection site symptoms ( $p=0.02$ ) (**Table 2**). Two mothers  
116 reported slightly less milk production in the first 24-72 hours after vaccine doses (**Table**  
117 **2**). With respect to infant symptoms, 12% of mothers reported at least one symptom  
118 after the 1st maternal vaccine dose (primarily gastrointestinal symptoms and sleep  
119 changes), and none reported an infant symptom after the 2nd dose (**Table 3**). In  
120 summary, no severe adverse effects for mothers or nursing infants were reported in this  
121 cohort after vaccination, and reported symptoms resolved up to 72 hours after  
122 vaccination.

123 **PEG detection in human milk.** Polyethylene glycol (PEG) is present in the lipid  
124 nanoparticles of the mRNA-based vaccines, and was reported to cause allergic reaction  
125 after vaccination in rare cases (12, 13). To address concerns about vaccine  
126 components passing to milk after vaccination, we performed ELISA assays to measure  
127 PEG-ylated proteins levels in milk after vaccination from 13 participants. PEG-ylated  
128 proteins were measured in milk samples collected before the vaccine, and at various  
129 time points post-vaccination (from 24 hours after 1st dose to 2 weeks after 2nd dose).  
130 Pre-vaccine PEG-ylated proteins levels did not significantly differ from PEG-ylated  
131 proteins levels at any post-vaccine time point in either paired or unpaired comparisons  
132 (**Figure 1**).

133 ***Anti-SARS-CoV-2 antibody levels in blood and milk samples after vaccination.*** We  
134 analyzed blood and milk samples from lactating individuals for anti-SARS-CoV-2  
135 antibodies to measure immune response after vaccination. Maternal blood anti-SARS-  
136 CoV-2 IgM and IgG antibodies increased significantly after the 1st dose (**Figure 2**). Anti-  
137 SARS-CoV-2 IgM levels were not significantly higher 4-10 weeks after the 2nd dose  
138 compared to samples collected after dose 1 (on the day of the 2nd dose) (**Figure 2A**).  
139 In contrast, anti-SARS-CoV-2 IgG levels increased significantly after the 2nd dose (P  
140 value <0.0001) when compared to samples collected immediately prior to the 2nd dose  
141 (**Figure 2B**). There was no significant difference in blood antibody levels between  
142 participants who received the mRNA-1237 compared to the BNT-162b2 vaccine after  
143 dose 2.

144 We found significantly higher levels of IgA antibodies specific to SARS-CoV-2 RBD  
145 protein in human milk samples collected after the 1st dose of both BNT-162b2 and  
146 mRNA-1237 vaccines (**Figure 3A and 3B**). There was no significant increase in milk  
147 anti-RBD IgA after the 2nd vaccination as compared to after dose 1 (**Figure 3A and**  
148 **3B**). Twelve individuals (25%, BNT-162b2 n=7; mRNA-1237 n=5) did not have  
149 detectable levels of anti-RBD IgA after either the 1st or 2nd dose (infants age at 1st  
150 dose range 1-11 months). Milk anti-RBD IgG levels increased after the 1st dose of  
151 vaccine and increased further after the 2nd dose (**Figure 3C and 3D**). There were no  
152 significant differences in milk anti-RBD IgG levels between women who received BNT-  
153 162b2 (**Figure 3C**) and mRNA-1237 (**Figure 3D**). These findings suggest that mRNA  
154 vaccine results in a robust immune response leading to increased anti SARS-CoV-2  
155 antibody levels in blood, but also in milk during lactation.



156 ***Correlations between antibody levels, participant characteristics, and symptoms.***

157 In order to better understand the differences in antibody responses between individuals  
158 in our cohort, we performed multiple correlation tests to determine whether IgG and IgA  
159 antibodies levels correlated with timing of sample collection after vaccination (range 4-  
160 10 weeks after 2nd dose), infant age at time of vaccination, or maternal BMI (**Table S2**).  
161 Milk IgA (but not IgG) levels declined significantly as the infant age at time of  
162 vaccination increased (**Figure 4A and 4B**). There was no significant correlation  
163 between IgG and IgA levels and either the length of time after 2nd dose or maternal BMI  
164 (**Table S2 and S3**). The levels of IgG and IgA antibodies induced in milk were  
165 significantly correlated after 1st dose (**Figure 4C**), but not after the 2nd dose (**Figure**  
166 **4D**). There was no correlation between the anti SARS-CoV-2 IgG levels in blood and  
167 milk after 1st dose (**Figure 4E**), but there was a positive correlation between levels at 4-  
168 10 weeks after 2nd dose (**Figure 4F**).

169 ***Plasma levels of anti-SARS-CoV-2 IgG are not detectable in infants after maternal***  
170 ***vaccination during lactation.*** Although maternal IgG antibodies have been shown in  
171 multiple studies to transfer to the infant *in utero*, there are little data to suggest that milk-  
172 derived antibodies are similarly transferred to the infant blood circulation during  
173 breastfeeding. To investigate whether passive immunity is conferred to the infant's  
174 blood after maternal vaccination during lactation, we analyzed infant blood samples  
175 from mothers who were vaccinated after delivery (n=8) and compared to infant blood  
176 samples from mothers who were vaccinated against COVID-19 during pregnancy (n=2).  
177 Blood samples were collected from these 10 infants (5 male, 5 female) at 61 days to 1  
178 year of age (**Table S4**). Plasma was tested for the presence of anti-SARS-CoV-2 IgG

179 and IgM and anti-RBD IgA. We evaluated infant blood samples collected at time frame  
180 of 4-15 weeks after 2nd dose as this time point corresponded to high anti-SARS-CoV-2  
181 IgG levels in mothers' blood and milk (**Figure 2 and 3**). No antibodies were detected in  
182 the blood of nursing infants born to mothers who were vaccinated postpartum (**Figure**  
183 **5**), despite high IgG levels in maternal blood and milk. In contrast, infants born to  
184 mothers who received both doses of vaccine during pregnancy had detectable plasma  
185 anti-SARS-CoV-2 IgG levels at follow-up (infant age range 61-65 days, 125-129 days  
186 after maternal dose 1) (**Figure 5**). None of the follow-up infant blood samples (from the  
187 lactation or pregnancy cohorts) had detectable levels of anti-RBD IgA antibodies. These  
188 results demonstrate that vaccination during lactation induces anti-SARS-CoV-2  
189 antibodies in human milk, but only vaccination during pregnancy and not lactation  
190 provides additional transfer of anti-SARS-CoV-2 antibodies to the infant blood.

191 We also investigated whether ingested antibodies could survive passage through the  
192 infant gastrointestinal tract by testing infant stool for anti-SARS-CoV-2 antibodies after  
193 vaccination (**Figure S1**) in one mother-infant dyad. We found that IgG (but not IgA) was  
194 detected in infant stool samples and were correlated with maternal milk anti-SARS-CoV-  
195 2 IgG levels.

196

197 **Conclusion:**

198 Our study provides one of the first detailed reports on patient symptoms and antibody  
199 responses of the COVID-19 mRNA vaccines in lactating mothers. We found that the  
200 rates of reported symptoms were similar to the CDC report from the V-Safe registry(14)  
201 but higher than described in the clinical trials, although we do not have a non-lactating  
202 comparison group. Importantly, there were no significant side effects noted in the infants  
203 of mothers vaccinated during breastfeeding. Comparing the mRNA vaccines made by  
204 current manufacturers, we found that lactating individuals may experience more  
205 vaccine-related side effects after mRNA-1237 compared to BNT-162b2 vaccine;  
206 however, no differences in immune response were observed between those vaccines.

207 It has recently been shown in a few studies that vaccine mRNA is not present in  
208 milk samples after vaccination(15, 16), or is only detected in very low levels in some  
209 cases(17), providing reassurance that risks of exposure to the breastfed infant are  
210 minimal. This study adds to the evidence that vaccine components are minimally  
211 transferred to human milk. We found no significant increase in milk PEG-ylated protein  
212 concentrations at various time points after vaccine administration in a subset of samples  
213 analyzed in our cohort. We did observe one sample with higher ratio of PEG-ylated  
214 proteins 24 hours post vaccination (**Figure 1**, patient 030). This sample had PEG-ylated  
215 protein levels equivalent to 2.8µl/ml vaccine. However, we cannot confirm that the  
216 increased PEG in this single sample was from the COVID-19 vaccine, as PEG exposure  
217 may also be from other sources, such laxatives or ibuprofen. There was no increase in  
218 protein PEG-ylation ratio after 2nd dose in the same individual, and no unusual  
219 symptoms were reported in either the mother or her infant. Larger studies are needed to

220 increase our understanding of transfer of PEG into human milk, and potential effects  
221 after ingestion by the infant. Although expert consensus states there is minimal or no  
222 potential risk for the infant from maternal COVID-19 vaccination(18, 19), the minor  
223 symptoms that were reported (sleep changes and gastrointestinal symptoms) should be  
224 further investigated in future studies to determine if they are related to vaccination. Our  
225 findings also suggest that administration of maternal mRNA-based vaccine during  
226 lactation did not lead to a detectable immune response in the infant blood, which further  
227 suggests that the vaccine is not transferred to the infant via milk and cannot trigger  
228 infant immune responses via that route.

229 We also demonstrate that COVID-19 mRNA vaccination induces significant  
230 increases in anti-SARS-CoV-2 IgM and IgG levels in lactating mothers' blood.  
231 Consistent with previous studies that showed IgM levels plateaued 28 days after  
232 COVID-19 infection (20), our results also demonstrated that dose 2 did not induce  
233 significantly higher levels of IgM than was observed after dose 1. In contrast,  
234 maternal blood IgG levels increased by 6-fold after the 2nd dose (compare to the levels  
235 after the 1st dose), highlighting the importance of the 2nd dose to boost the antibody  
236 response (21).

237 Due to the lack of data about vaccination during pregnancy, many pregnant  
238 individuals were initially denied access to, declined, or were recommended to delay  
239 vaccination until after pregnancy. As such, many mothers have waited until after  
240 delivery to receive the vaccine. Although mothers vaccinated during lactation  
241 transferred antibodies to their infant through milk, which is an important component of  
242 mucosal immunity for the baby, there was no passive transfer of antibodies to the infant

243 bloodstream, as occurs if the mother is vaccinated during pregnancy. Correlates of  
244 infant immune protection to COVID-19 are not yet well understood, however passive *in*  
245 *utero* transfer of IgG to the infant is important in the prevention of a number of infections  
246 including pertussis and influenza (22–24). Passively-transferred milk-derived IgA likely  
247 provides partial mucosal immune protection in infants, as breastfeeding is associated  
248 with lower risk of infections associated with mucosal defense, especially against  
249 respiratory infections (25–27).

250       Two nursing infants in our cohort were infected with COVID-19 during the study  
251 (one a week post maternal 2nd dose, and the second one between 1st and 2nd  
252 maternal vaccine), indicating that milk antibodies cannot fully protect against SARS-  
253 CoV-2 infection, especially at the time before full immune response is achieved in the  
254 vaccinated mother, typically 2-3 weeks after the booster dose (**Figure 2D**). Further  
255 studies are needed to determine the degree of protection conferred by IgA and IgG anti-  
256 SARS-CoV-2 antibodies that are present in milk. Interestingly, we demonstrated for the  
257 first time that anti-SARS-CoV-2 RBD IgG antibodies are detectable in stool samples  
258 collected 4 and 8 weeks post maternal vaccine (**Figure S1**), which suggests that milk-  
259 derived antibodies can persist in the infant gastrointestinal tract and provide protection  
260 against viral infection via the digestive system(28). Further studies evaluating the  
261 additive benefit of both transplacentally-derived maternal IgG, as well as milk-derived  
262 IgA and IgG are needed to determine protection against COVID-19 in early infancy. Our  
263 findings demonstrate the importance of determining the optimal timing of vaccine  
264 administration to confer maximal protection against COVID-19 in infancy.

265           Twenty-five percent of women in our cohort had no detectable levels of anti-RBD  
266 IgA in their milk after vaccination. Similar findings were reported in other studies (5, 6),  
267 suggesting that production and transfer efficiency vary between individuals. Our  
268 analysis showed a negative correlation between infant age and milk anti-RBD IgA  
269 levels, which might explain some of the variation in milk IgA levels observed between  
270 different individuals. Ten out of the 12 participants who had no detectable anti-RBD IgA,  
271 had infants older than 5.5 months at the time of sample collection. Further studies are  
272 needed to investigate the relationship between infant age, breastfeeding exclusivity,  
273 milk IgA antibodies, and optimal timing of vaccination during lactation.

274           Strengths of our study include the prospective design and comprehensive  
275 symptom reporting by the vaccinated participants. We also report on longitudinal follow-  
276 up of infant immune responses, which has not been previously described. Furthermore,  
277 we included both BNT162b2 and mRNA-1273 vaccines and compared responses  
278 between the two vaccine manufacturers. Limitations include the small sample size, and  
279 that not all samples were able to be collected from all infant participants.

280           In summary, our study reports that no severe adverse effects were noted in  
281 lactating individuals or their breastfeeding infants after COVID-19 mRNA vaccination.  
282 We demonstrated that human milk confers passive immunity to the infants, primarily  
283 through mucosal immunity in the gastrointestinal tract provided by IgA and IgG in milk.  
284 These results are important evidence to aid in counseling lactating individuals on the  
285 safety and efficacy of the COVID-19 mRNA vaccines, and the potential benefits to both  
286 the mother and infant.

287 **Methods:**

288 *Study approval and study population.* The institutional review board of the University of  
289 California San Francisco approved the study. Written, informed consent was obtained  
290 from all study volunteers in the COVID-19 Vaccine in Pregnancy and Lactation  
291 (COVIPAL) cohort study from December 2020 to June 2021. Eligible participants were  
292 actively pregnant or lactating, planning to receive any COVID-19 vaccine, and willing to  
293 donate blood and/or milk samples.

294 *Clinical data collection.* Clinical data on vaccine side effects were collected through an  
295 online questionnaire that was sent to participants 21 days or more after each vaccine  
296 administration. Questionnaires were distributed using REDCap.

297 *Sample collection.* Maternal blood and milk samples were collected at three time points:  
298 1) up to 1 day before the 1st dose (pre-vaccine); 2) on the day of and prior to  
299 administration of the 2nd dose (after 1st dose); and between 4-10 weeks after the 2nd  
300 dose (after 2nd dose). In some cases, additional milk samples were collected up to 31  
301 days before the 1st dose, 24 hours after each dose, and weekly for up to 4 weeks after  
302 the 2nd dose. Infant blood was collected by heel stick by trained study staff at 5-15  
303 weeks after 2nd maternal vaccination.

304 *Milk processing.* Fresh human milk samples were self-collected by participants into  
305 sterile containers at several time points before, during, and after vaccination. Milk  
306 samples were either collected immediately by the study staff or frozen by mothers in  
307 their home freezer as soon as possible after pumping. Samples were kept on ice during

308 transport from home to the lab for processing. Milk was aliquoted and stored in -80°C  
309 until analyzed.

310 *Measurement of SARS-CoV-2 specific IgM and IgG in plasma samples.* Whole blood  
311 was collected into tubes containing EDTA. Plasma was isolated from whole blood by  
312 centrifugation and immediately cryopreserved at -80°C until analysis. Anti-SARS-CoV-2  
313 plasma IgM and IgG antibodies were measured using the Pylon 3D automated  
314 immunoassay system(29) (ET Healthcare, Palo Alto, CA). In brief, quartz glass probes  
315 pre-coated with either affinity-purified goat anti-human IgM (IgM capture) or Protein G  
316 (IgG capture) were dipped into diluted plasma samples, washed, and then dipped into  
317 the assay reagent containing both biotinylated, recombinant spike protein receptor  
318 binding domain (RBD) and nucleocapsid protein (NP). After washing, the probes were  
319 incubated with Cy®5-streptavidin (Cy5-SA) polysaccharide conjugate reagent, allowing  
320 for cyclic amplification of the fluorescence signal. The background-corrected signal of  
321 SARS-CoV-2 specific antibodies was reported as relative fluorescent units (RFU). IgM  
322 and IgG measurements greater than 50 RFU were considered positive RFUs.

323 *Measurement of IgA and IgG by ELISA assay in milk.* After thawing, milk fat was  
324 separated by cold centrifugation (10,000g for 10 min, 4°C). Milk supernatant samples  
325 were diluted 1:2 in sample diluent buffer and were plated in duplicate on a 96-well plate  
326 containing S1 spike protein RBD (Ray-Biotech, GA, USA, IEQ-CoVS1RBD-IgG-1 and  
327 IEQ-CoVS1RBD-IgA-1). For IgA assays, samples were also plated in duplicate on a  
328 second 96-well plate coated with human albumin to account for non-specific binding.  
329 OD values for albumin were subtracted from the OD values for RBD. Each plate



330 contained seven anti-RBD standards and one blank negative control. The mean  
331 absorbance of each sample was captured on an ELISA plate reader at 450 nm.  
332 Background values (blank negative control) were subtracted from the albumin and RBD  
333 plates. Standard controls were used to create a standard curve and determine the level  
334 of anti-RBD IgA and IgG in unit/ml.

335 *Measurement of Polyethylene Glycol (PEG) in human milk by ELISA.* Milk supernatant  
336 was diluted 1:8 with the provided sample buffer and analyzed by PEGylated protein  
337 ELISA kit (Enzo, Farmingdale, NY, USA). Seven wells of each plate were loaded with  
338 serial dilutions (1:2) of mRNA-1273 or BNT162b2 to generate the standard curve for  
339 each vaccine (**Figure 1A**). In addition, vaccines were inoculated into human milk  
340 samples at three different concentrations (33 $\mu$ l/ml, 3.3 $\mu$ l/ml and 0.33 $\mu$ l/ml) and were  
341 analyzed separately to ensure the ability of the kit to detect the vaccine PEGylated  
342 components in milk samples (**Figure 1B**). Prism 9 (v 9.1.2) was used to interpolate  
343 vaccine concentration in the samples based on OD values, using a sigmoidal, four  
344 parameters logistic curve. A mean of pre-vaccine milk PEG concentration was  
345 calculated based on 13 pre-vaccine samples analyzed. Results are presented as a ratio  
346 of sample concentration divided by the mean pre-vaccine milk PEG concentration.

347 *Statistics:* All data analyses were conducted using Stata statistical software (v14,  
348 College Station, TX). Descriptive statistics included frequencies for categorical  
349 variables, and means, standard deviations, medians, and ranges for continuous  
350 variables. Group differences in categorical variables were analyzed using Fisher's exact  
351 test, and group differences in continuous variables were analyzed using Mann-Whiney  
352 U tests. McNemar tests were used to evaluate differences in symptom frequencies after

353 each vaccine dose. Spearman correlations was used to assess the magnitude of  
354 associations between continuous variables. Non-parametric tests were used to  
355 accommodate non-normal distributions and small group sizes.

356

357

358

359 **Author contribution:**

360 YG designed the study, conducted experiments, acquired data, analyzed data, and was  
361 lead author of the manuscript. MP designed the study, conducted experiments, acquired  
362 data, analyzed data, assisted with editing and writing the manuscript. AC recruited  
363 participants, acquired data, and assisted with editing and writing the manuscript. CG  
364 analyzed data, conducted statistical analysis assisted with editing the manuscript.  
365 AHBW providing reagents and acquired data. UJ collected samples and conducted  
366 experiments. CYL recruited participants and collected samples. VJG, LW, SB, LL  
367 collected and process samples. EB collected and processed samples and assisted with  
368 editing the manuscript. IVA assisted with study and questionnaires design and editing  
369 and writing the manuscript. NA supervised the study and assisted in writing the  
370 manuscript. SLG and VJF designed and supervised the study and assisted in writing the  
371 manuscript.

372

373

374

375

376 **References:**

- 377 1. Labayo HKM et al. Norovirus-specific immunoglobulin A in breast milk for protection  
378 against norovirus-associated diarrhea among infants.. *EClinicalMedicine*  
379 2020;27:100561.
- 380 2. Sadeharju K et al. Maternal antibodies in breast milk protect the child from  
381 enterovirus infections. *Pediatrics* 2007;119(5):941–946.
- 382 3. Fox A et al. Robust and Specific Secretory IgA Against SARS-CoV-2 Detected in  
383 Human Milk[published online ahead of print: 2020]; doi:10.1016/j.isci.2020.101735
- 384 4. Demers-Mathieu V et al. Difference in levels of SARS-CoV-2 S1 and S2 subunits-  
385 and nucleocapsid protein-reactive SIgM/IgM, IgG and SIgA/IgA antibodies in human  
386 milk. *J. Perinatol.* 2020;1–10.
- 387 5. Perl SH et al. SARS-CoV-2–Specific Antibodies in Breast Milk After COVID-19  
388 Vaccination of Breastfeeding Women. *JAMA* 2021;(19):2013–2014.
- 389 6. Fox A, Norris C, Amanat F, Zolla-Pazner S, Powell RL. The vaccine-elicited  
390 immunoglobulin profile in milk after COVID-19 mRNA-based vaccination is IgG-  
391 dominant and lacks secretory antibodies. *medRxiv* 2021;2021.03.22.21253831.
- 392 7. KELLY JC et al. Anti-SARS-CoV-2 antibodies induced in breast milk after Pfizer-  
393 BioNTech/BNT162b2 vaccination. *Am. J. Obstet. Gynecol.* 2021;0(0).  
394 doi:10.1016/j.ajog.2021.03.031

- 395 8. Gray KJ et al. COVID-19 vaccine response in pregnant and lactating women: a  
396 cohort study. *Am. J. Obstet. Gynecol.* 2021;0(0). doi:10.1016/j.ajog.2021.03.023
- 397 9. Zheng W et al. Microbiota-targeted maternal antibodies protect neonates from enteric  
398 infection. *Nature* 2020;577(7791):543–548.
- 399 10. Krause PR, Gruber MF. Emergency Use Authorization of Covid Vaccines — Safety  
400 and Efficacy Follow-up Considerations. *N. Engl. J. Med.* 2020;383(19):e107.
- 401 11. Hall S. COVID vaccines and breastfeeding: what the data say. *Nature*  
402 2021;594(7864):492–494.
- 403 12. Sellaturay P, Nasser S, Ewan P. Polyethylene Glycol–Induced Systemic Allergic  
404 Reactions (Anaphylaxis). *J. Allergy Clin. Immunol. Pract.* 2021;9(2):670–675.
- 405 13. Garvey LH, Nasser S. Anaphylaxis to the first COVID-19 vaccine: is polyethylene  
406 glycol (PEG) the culprit?. *BJA Br. J. Anaesth.* 2021;126(3):e106.
- 407 14. Shimabukuro TT et al. Preliminary Findings of mRNA Covid-19 Vaccine Safety in  
408 Pregnant Persons. *N. Engl. J. Med.* [published online ahead of print: April 21, 2021];  
409 doi:10.1056/nejmoa2104983
- 410 15. Mattar CN et al. Title page Addressing anti-syncytin antibody levels, and fertility and  
411 breastfeeding concerns, following BNT162B2 COVID-19 mRNA vaccination. *medRxiv*  
412 2021;2021.05.23.21257686.
- 413 16. Golan Y et al. Evaluation of Messenger RNA From COVID-19 BTN162b2 and

414 mRNA-1273 Vaccines in Human Milk. *JAMA Pediatr.* [published online ahead of print:  
415 July 6, 2021]; doi:10.1001/jamapediatrics.2021.1929

416 17. Ming J et al. BNT162b2 vaccination induces SARS-CoV-2 specific antibody  
417 secretion into human milk with minimal transfer of vaccine mRNA. *medRxiv*  
418 2021;2021.04.27.21256151.

419 18. STAFFORD IA, PARCHEM JG, SIBAI BM. The COVID-19 vaccine in pregnancy:  
420 risks benefits and recommendations. *Am. J. Obstet. Gynecol.* [published online ahead  
421 of print: January 30, 2021]; doi:10.1016/j.ajog.2021.01.022

422 19. Craig AM, Hughes BL, Swamy GK. Coronavirus disease 2019 vaccines in  
423 pregnancy. *Am. J. Obstet. Gynecol. MFM* 2021;3(2):100295.

424 20. Liu X et al. Patterns of IgG and IgM antibody response in COVID-19 patients.  
425 *Emerg. Microbes Infect.* 2020;9(1):1269–1274.

426 21. Polack FP et al. Safety and Efficacy of the BNT162b2 mRNA Covid-19 Vaccine. *N.*  
427 *Engl. J. Med.* 2020;383(27):2603–2615.

428 22. Dabrera G et al. A case-control study to estimate the effectiveness of maternal  
429 pertussis vaccination in protecting newborn infants in England and Wales, 2012-2013.  
430 *Clin. Infect. Dis.* 2015;60(3):333–337.

431 23. Amirthalingam G et al. Effectiveness of maternal pertussis vaccination in England:  
432 An observational study. *Lancet* 2014;384(9953):1521–1528.

433 24. Puck JM, Glezen WP, Frank AL, Six HR. Protection of infants from infection with  
434 influenza A virus by transplacentally acquired antibody. *J. Infect. Dis.* 1980;142(6):844–  
435 849.

436 25. Wright AL, Holberg CJ, Martinez FD, Morgan WJ, Taussig LM. Breast feeding and  
437 lower respiratory tract illness in the first year of life. Group Health Medical Associates..  
438 *BMJ* 1989;299(6705):946–949.

439 26. Tarrant M, Kwok M, Lam T, Epidemiology GL-, 2010 undefined. Breast-feeding and  
440 childhood hospitalizations for infections. *JSTOR*

441 27. Oddy WH et al. Breast feeding and respiratory morbidity in infancy: A birth cohort  
442 study. *Arch. Dis. Child.* 2003;88(3):224–228.

443 28. Ma C, Cong Y, Zhang H. COVID-19 and the Digestive System. *Am. J.*  
444 *Gastroenterol.* 2020;115(7):1003–1006.

445 29. Lynch KL et al. Magnitude and Kinetics of Anti-Severe Acute Respiratory Syndrome  
446 Coronavirus 2 Antibody Responses and Their Relationship to Disease Severity. *Clin.*  
447 *Infect. Dis.* 2021;72(2):301–308.

448

449

450 **Funding:**

451 These studies were supported by the Marino Family Foundation (to M.P), the National  
452 Institutes of Health (NIAID K23AI127886 to M.P. and NIAID K08AI141728 to S.L.G.),  
453 the Krzyzewski Family (to S.L.G), the Weizmann Institute of Science -National  
454 Postdoctoral Award Program for Advancing Women in Science (to Y.G.), the  
455 International Society for Research In Human Milk and Lactation (ISRHML) Trainee  
456 Bridge Fund (to Y.G.), and of the Human Frontier Science Program (to Y.G.).

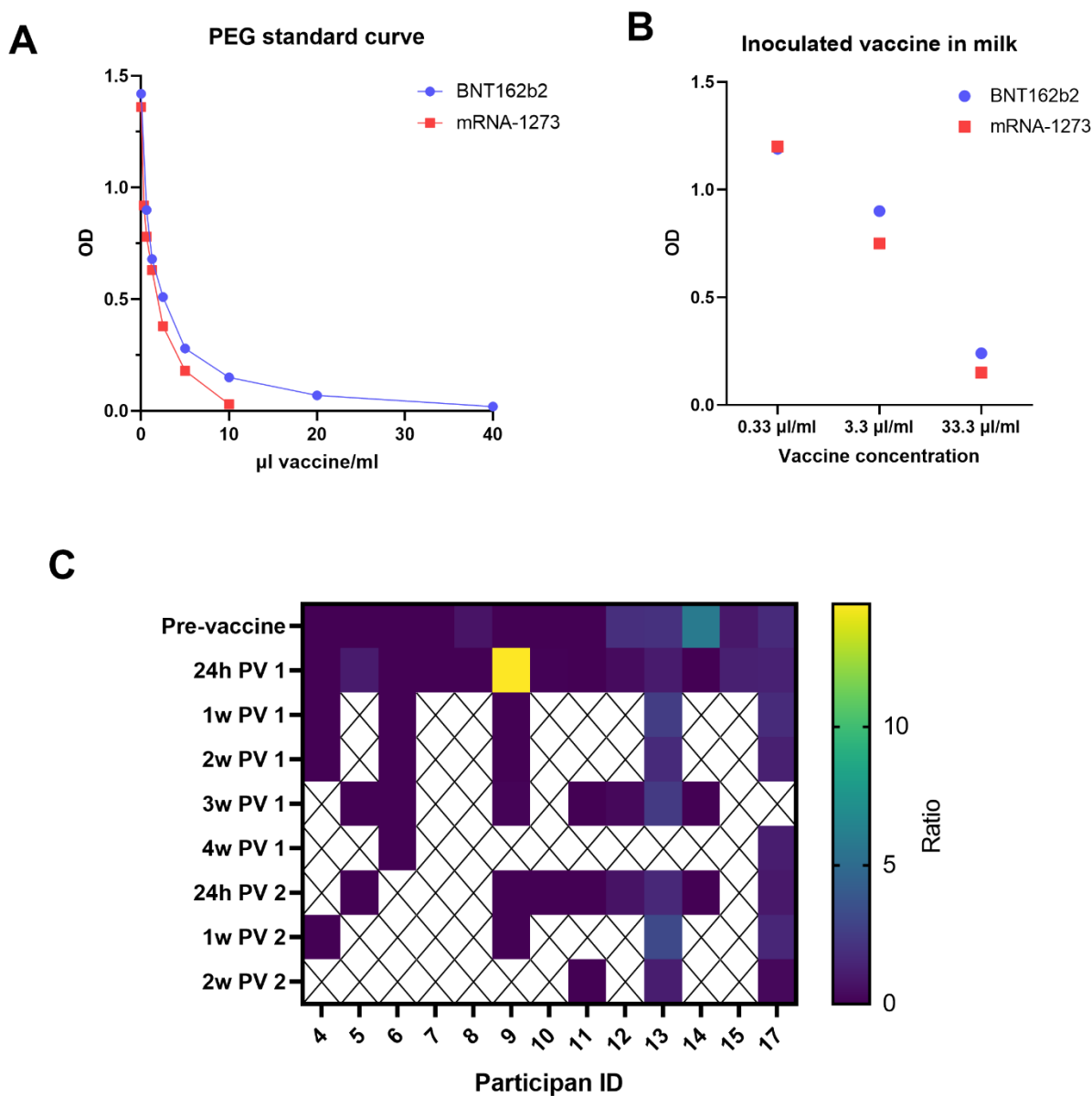
457

458

459



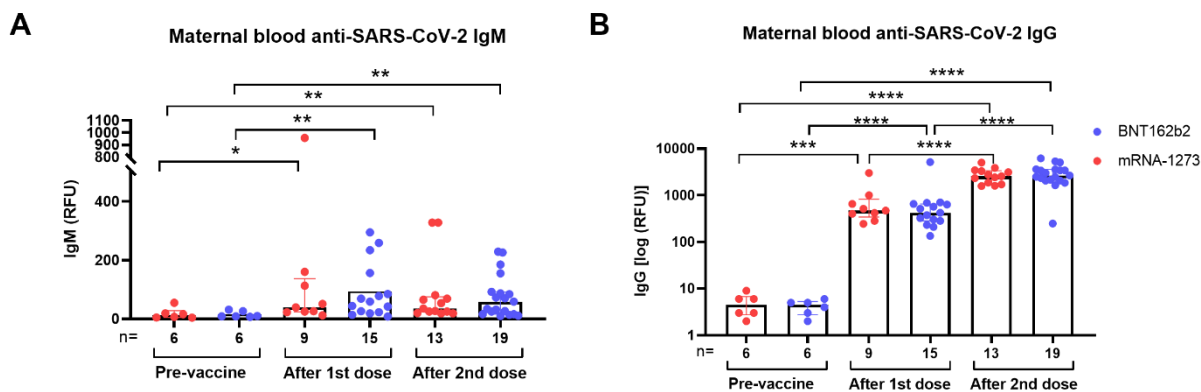
460 **Figures:**



461

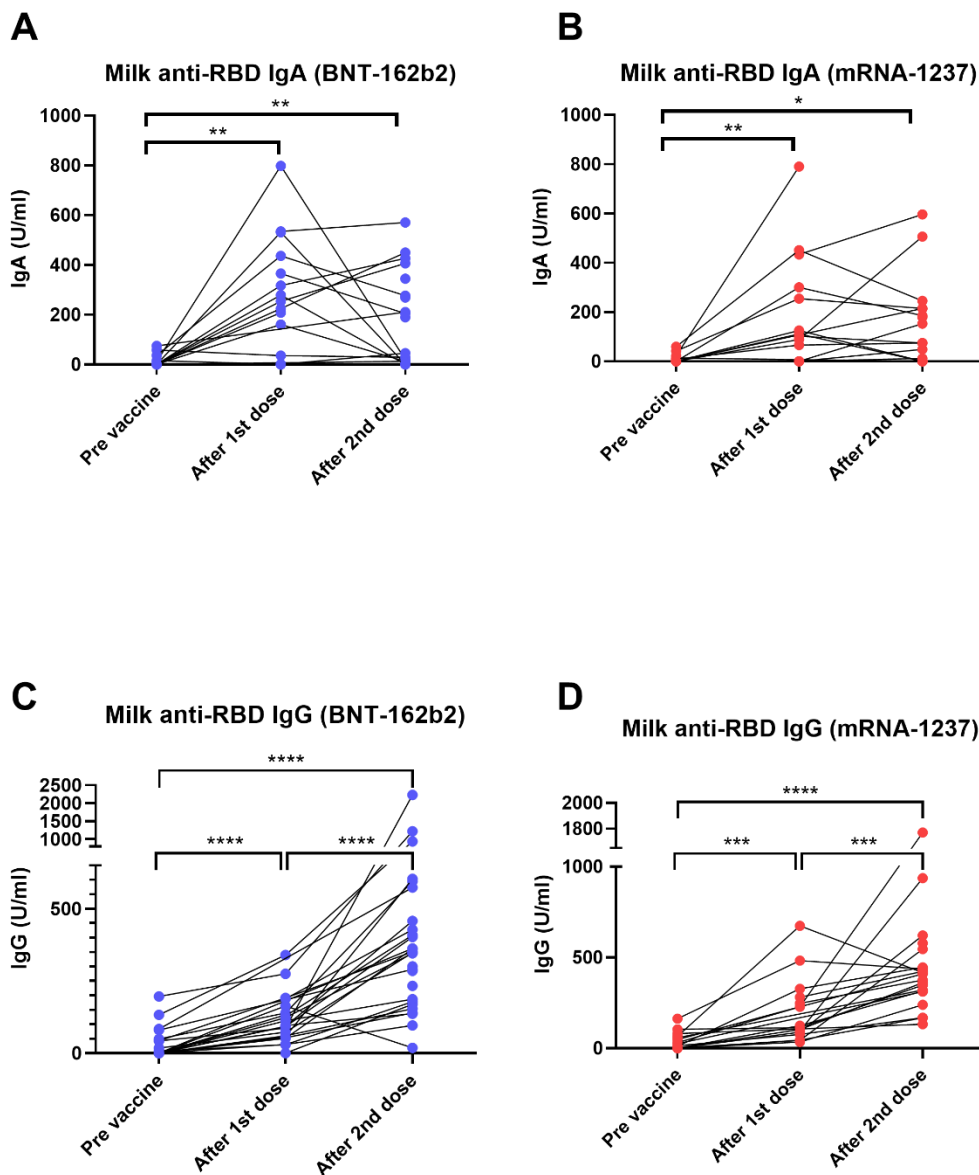
462 **Figure 1: Detection of vaccine PEG in human milk samples.** A) different vaccine  
463 concentrations were used to generate a standard curve of OD (Y axis) vs. vaccine  
464 concentration (X axis). Vaccine concentrations in each sample were interpolated based  
465 on Sigmoidal, four-parameter logistic (4PL) curve. B) mRNA-1273 and BNT-162b2  
466 vaccines were inoculated separately from pre-vaccine milk samples and were used to  
467 ensure the assay's sensitivity to detect the vaccine PEG components in milk samples.  
468 C) Values shown in heat map are the ratio of calculated PEG concentration in each

469 sample to average PEG concentration in all pre-vaccine milk samples. No significant  
470 differences were observed between samples collected at any of the post vaccine (PV)  
471 time points and the pre-vaccine samples (paired and unpaired two-tailed t-tests). Y axes  
472 represent time of sample collection, as hours (h) or weeks (w) Post vaccine 1 (PV 1), or  
473 Post vaccine 2 (PV 2).



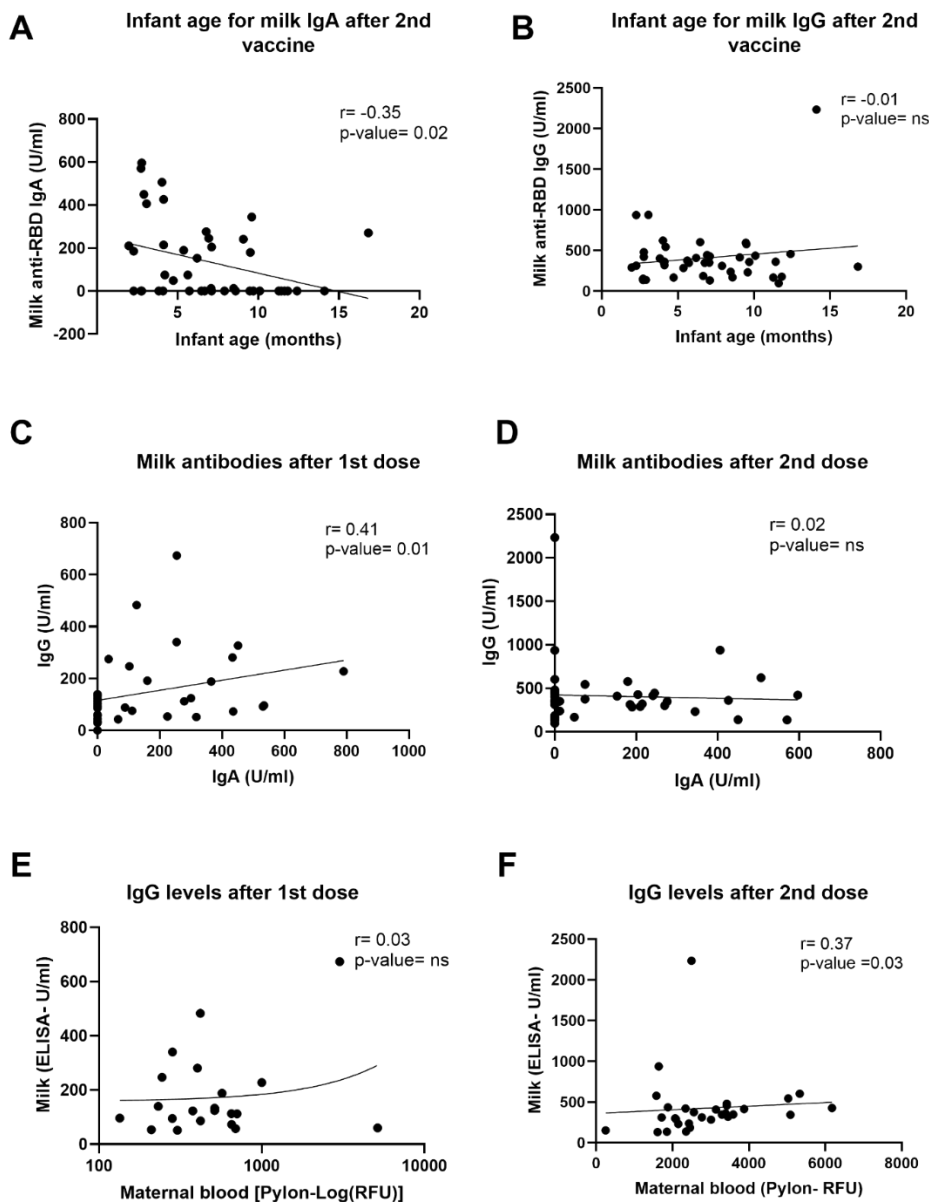
474

475 **Figure 2: Elevated levels of plasma anti-SARS-CoV2 antibodies in COVID-19**  
476 **mRNA vaccinated lactating individuals.** Anti-SARS-CoV2 IgM (A) and IgG (B) levels  
477 in plasma of lactating individuals post COVID-19 mRNA vaccine (RFU- relative  
478 fluorescent units, positive cut-off >50 RFU). After 1st dose samples were collected on  
479 the day of the second vaccine, and after 2nd dose samples were collect 4-10 weeks  
480 post 2nd dose. Asterisks represent p-values: \*= p-value <0.05, \*\*= p-value <0.01, \*\*\*=  
481 <0.001, \*\*\*\*= <0.0001 as determined by unpaired Mann-Whitney test.



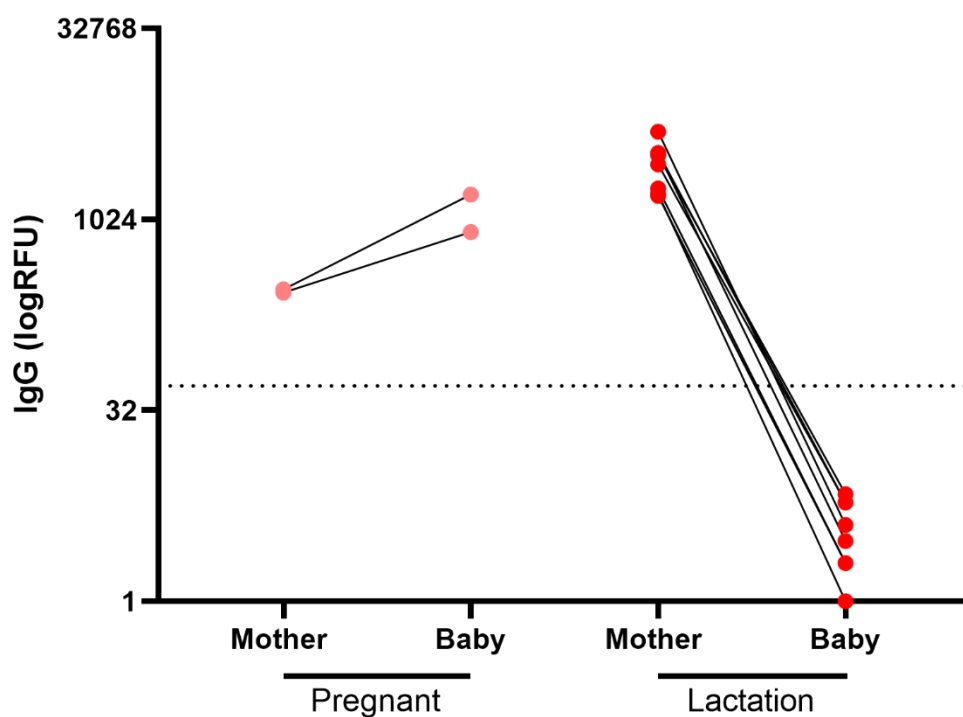
482

483 **Figure 3: Elevated levels of milk anti-SARS-CoV2 IgA antibodies in COVID-19**  
484 **mRNA vaccinated lactating individuals.** Milk samples from individuals receiving BNT-  
485 162b2 (n=27) (A) and mRNA-1273 (n=21) (B) anti- SARS-CoV2 vaccines were  
486 analyzed for anti-SARS-CoV2 IgA antibodies using ELISA at various time points as  
487 indicated on the X axis. After 1st dose samples were collected on the day of the second  
488 vaccine, and after 2nd dose samples were collect 4-10 weeks post 2nd dose. Milk anti-  
489 SARS-CoV2 IgG levels were measured using ELISA in milk samples from individuals  
490 receiving BNT-162b2 (n=27) (C) or mRNA-1273 (n=21) (D). Asterisks represent p-  
491 values: \* = p-value < 0.05, \*\* = p-value < 0.01, \*\*\* = < 0.001 as determined by unpaired  
492 Mann-Whitney test.



493

494 **Figure 4: Correlations between milk antibodies, blood antibodies and infant age.**  
495 Two-tailed Spearman correlation was used to correlate milk IgA (A) and IgG (B) levels  
496 (Y axis) and infant age (X axis) 4-10 weeks after the 2nd dose administration (n=30). In  
497 addition, two-tailed Spearman correlation was used to correlate milk IgG (Y axis) and  
498 milk IgA levels (X axis) on the day of 2nd dose administration (C), 21-28 days after 1st  
499 dose (n=35) and 4-10 weeks after 2nd dose (D). We also tested correlation  
500 between milk (Y axis) and maternal plasma (X axis) IgG levels at day of 2nd dose (E)  
501 and 4-10 weeks after the 2nd dose administration (F) (n=30).



502

503 **Figure 5: Transfer of anti-SARS-CoV2 IgG from mother to infant.** IgG levels were  
504 measured in blood samples of infants and mothers 61 days to 1 year postpartum, 61-  
505 129 days after 1st maternal vaccine administration. Maternal and infant samples were  
506 collected in the same week (except in one case in which the maternal sample was  
507 collected 18 days prior to the infant sample). X axis represents the time at which the  
508 mother received the 1st dose: during pregnancy (pink), or after delivery (red). (RFU-  
509 relative fluorescent units, dashed line represents positive cut-off >50 RFU). Sample  
510 characteristics and individual antibodies levels are present in **Table S4**.

511

512 Tables:

513 **Table 1. Sample characteristics overall and by vaccine manufacturer**

Sample Characteristics	Full Cohort (n=48, 100%)	BNT162b2 (n=27, 56%)	mRNA-1237 (n=21, 44%)
<b>Maternal characteristics</b>			
Maternal age, years			
Median (min, max)	35 (27, 46)	35 (30, 45)	35 (27, 46)
Race/ethnicity, % (n)			
Asian	31% (15)	30% (8)	33% (7)
Black or African American	2% (1)	4% (1)	0% (0)
White/Caucasian	59% (28)	55% (15)	62% (13)
Other (Arab)	2% (1)	0% (0)	5% (1)
More than 1 race/ethnicity (White+Latina/Asian/Middle Eastern)	6% (3)	11% (3)	0% (0)
Highest level of education completed			
Some college	2% (1)	0% (0)	5% (1)
College graduate	17% (8)	19% (5)	14% (3)
Advanced degree	81% (39)	81% (22)	81% (17)
Work in health care?			
Yes, providing direct patient care	58% (28)	52% (14)	67% (14)
Yes, but not in direct patient care	19% (9)	15% (4)	24% (5)
No	23% (11)	33% (9)	9% (2)
Pre-Pregnancy Body Mass Index			
Median (min, max)	23.4 (19.1, 37.5)	23.4 (19.1, 35.9)	22.8 (19.6, 37.5)
Number of children			
1	40% (19)	41% (11)	38% (8)
2	46% (22)	41% (11)	52% (11)
3	12% (6)	15% (4)	10% (2)
4	2% (1)	3% (1)	0% (0)
Duration of most recent pregnancy, weeks			
Median (min, max)	39.0 (33.9, 41.1)	39.1 (33.9, 41.0)	39.0 (37.4, 41.1)
<b>Infant characteristics</b>			
Infant age at maternal 1st dose, months			
Median (min, max)	4.7 (0.1, 17.2)	4.8 (0.2, 15.2)	4.6 (0.1, 17.2)
Sex, % (n)			
Male	60% (29)	67% (18)	52% (11)
Female	40% (19)	33% (9)	48% (10)

Exclusively breastfeeding (and no solids)			
Yes	23% (11)	22% (6)	24% (5)
No	77% (37)	78% (21)	76% (16)
<b><i>Days after vaccine that symptoms were assessed</i></b>			
Dose 1			
Mean (SD)	78.7 (31.8)	78.3 (35.4)	79.2 (27.4)
Median (min, max)	81 (18, 154]	78 (18, 154)	86 (26, 117)
Dose 2			
Mean (SD)	59.6 (25.1)	62.6 (28.3)	55.8 (20.2)
Median (min, max)	58.5 (28, 133)	57 (29, 133)	60 (28, 89)

514 Note: None of the characteristics above differed significantly by vaccine manufacturer.

515 Abbreviations: Standard deviation (SD), minimum (min), maximum (max)



516 Table 2: Symptoms after each vaccine dose

Symptoms	Full Cohort:			After 1st dose			After 2nd dose		
	1st dose	2nd dose	P-value <sup>a</sup>	BNT162b2	mRNA-1237	p-value <sup>b</sup>	BNT162b2	mRNA-1237	p-value <sup>b</sup>
	n=48			n=27	n=21		n=27	n=21	
<b>Injection site symptoms, % (n)</b>									
Any injection site symptoms	88% (42)	88% (42)	>0.99	78% (21)	100% (21)	<b>0.02</b>	78% (21)	100% (21)	<b>.02</b>
Pain	88% (42)	85% (41)	0.71	78% (21)	100% (21)	<b>0.02</b>	78% (21)	95% (20)	0.12
Redness	4% (2)	10% (5)	0.08	0% (0)	10% (2)	0.19	4% (1)	19% (4)	0.15
Swelling	17% (8)	17% (8)	>0.99	7% (2)	29% (6)	0.12	11% (3)	24% (5)	0.27
Itching	4% (2)	4% (2)	>0.99	4% (1)	5% (1)	>.99	4% (1)	5% (1)	>.99
Rash around injection site	2% (1)	4% (2)	0.32	0% (0)	5% (1)	0.44	0% (0)	10% (2)	0.19
<b>Generalized symptoms, % (n)</b>									
Any general symptoms	48% (23)	92% (44)	<b>&lt;0.001</b>	44% (12)	52% (11)	0.77	85% (23)	100% (21)	0.12
Fever	12% (6)	62% (30)	<b>&lt;0.001</b>	19% (5)	5% (1)	0.21	52% (14)	76% (16)	0.13
Chills	8% (4)	48% (23)	<b>&lt;0.001</b>	11% (3)	5% (1)	0.62	37% (10)	62% (13)	0.14
Headache	21% (10)	67% (32)	<b>&lt;0.001</b>	11% (3)	33% (7)	0.08	56% (15)	81% (17)	0.07
Joint pain	8% (4)	31% (15)	<b>0.002</b>	7% (2)	10% (2)	>0.99	30% (8)	33% (7)	>0.99
Muscle/body aches	21% (10)	69% (33)	<b>&lt;0.001</b>	30% (8)	10% (2)	0.15	59% (16)	81% (17)	0.13

Fatigue or tiredness	44% (21)	81% (39)	<b>&lt;0.001</b>	41% (11)	48% (10)	0.77	67% (18)	100% (21)	<b>0.003</b>
Nausea	4% (2)	12% (6)	0.10	4% (1)	5% (1)	>0.99	7% (2)	19% (4)	0.38
Vomiting	0% (0)	0% (0)	---	0% (0)	0% (0)	---	0% (0)	0% (0)	----
Diarrhea	4% (2)	4% (2)	>0.99	4% (1)	5% (1)	>0.99	0% (0)	10% (2)	0.19
Abdominal pain	2% (1)	0% (0)	0.32	0% (0)	5% (1)	0.44	0% (0)	0% (0)	----
Rash not near injection site	0% (0)	0% (0)	---	0% (0)	0% (0)	---	0% (0)	0% (0)	----
Lump/swelling in breast (same side as injection)	0% (0)	2% (1)	0.32	0% (0)	0% (0)	---	4% (1)	0% (0)	>0.99
Lump/swelling in breast (opposite side as injection)	0% (0)	0% (0)	---	0% (0)	0% (0)	---	0% (0)	0% (0)	----
Mastitis	2% (1)	0% (0)	0.32	0% (0)	5% (1)	0.44	0% (0)	0% (0)	----
Decrease in milk supply	2% (1)	2% (1)	>0.99	0% (0)	5% (1)	0.44	0% (0)	5% (1)	0.44

517 <sup>a</sup> McNemar's test; <sup>b</sup> Fisher's Exact test

518

519 **Table 3. Infant symptoms reported after maternal vaccination (write-in only)**

INFANT SYMPTOMS	% (n)	Vaccine
After 1st vaccine dose		
None / no changes / blank	88% (42)	
<i>“My baby seemed a little tired.”</i>	2% (1)	BNT162b2
<i>“He started pooping a lot! And it was more sour smelling diarrhea like poops. I don't know if there is any correlation”</i>	2% (1)	BNT162b2
<i>“It could have been a fluke, but both my infant and I slept through the night for the first time the night after I received the 1st dose of the vaccine.”</i>	2% (1)	BNT162b2
<i>“He had some diaper rash, but likely unrelated”</i>	2% (1)	BNT162b2
<i>“Rash on the face / worsening of baby acne”</i>	2% (1)	mRNA-1237
<i>“Disrupted sleep, waking at night when he usually doesn't. More fussy than normal.”</i>	2% (1)	mRNA-1237
After 2nd vaccine dose		
None / no changes / blank	100% (48)	

520

521

522

523

524

525 **Table S1. Participants testing positive for SARS-CoV-2 during the study period**

<b>Participants testing positive for SARS-CoV-2</b>			
<b>Participant ID:</b>	1	2	3
<b>Mother positive for SARS-CoV-2</b>	No	<b>Yes</b>	<b>Yes</b>
<b>Infant positive for SARS-CoV-2</b>	<b>Yes</b>	<b>Yes</b>	No
<b>Other people in the household diagnosed</b>	Yes	N/A	No
<b>Time of diagnosis</b>	1 week after 2nd dose	N/A	10 day before 1st dose
<b>Baby exclusively breastfed</b>	No	Yes	No
<b>Maternal blood IgG (RFU)</b>			
On the day of 2nd dose	244	5503	N/A
4 weeks after 2nd dose	2558	5290	N/A
<b>Infant blood IgG (RFU)</b>			
4 weeks after 2nd vaccine dose	N/A	1928	N/A
<b>Infant blood IgA (U/ml)</b>			
4 weeks after 2nd vaccine dose	N/A	122	N/A
<b>Milk anti-RBD IgG levels (U/ml)</b>			
Pre-vaccine	N/A	55	7.3
On the day of 2nd dose	246	2653	323
4 weeks after 2nd dose	375	2834	250
<b>Maternal blood positive for anti SARS-CoV2-N-protein antibodies</b>	N/A	Samples collected on day of 2nd dose and 5 weeks after 2nd dose were positive.	N/A
<b>Maternal injection site symptoms</b>			
Reported after 1st vaccine dose:	Pain	Pain, Itching	None
Reported after 2nd vaccine dose:	Pain	None	Pain

<b>Maternal generalized symptoms</b>			
Reported after 1st vaccine dose:	None	None	None
Reported after 2nd vaccine dose:	Fever, Chills, Muscle aches or body aches, Fatigue or tiredness	Fever, Chills, Fatigue or tiredness	Fatigue or tiredness
<b>Baby symptoms</b>			
After 1st dose	None	None	None
after 2nd dose:	None	Less active. Feverish.	None

526

527

528

529

530

531 **Table S2. Correlations between antibody levels and timing of samples in relation to childbirth and vaccine**

Antibodies and sample types being correlated	N	Spearman correlations	
		rho	p
<b>Samples collected after 1st dose</b>			
IgG in maternal blood and ...	24		
Time from childbirth to collection		0.38	0.07
Time from 2nd dose to sample		-0.11	0.59
IgG in breast milk and ...	35		
Time from childbirth to sample		-.05	0.75
Time from 2nd dose to sample		-0.12	0.47
IgA in breast milk and ...	38		
Time from childbirth to sample		-0.18	0.28
Time from 2nd dose to sample		0.12	0.45
<b>Samples collected after dose 2</b>			
IgG in maternal blood and ...	32		
Time from childbirth to sample		0.01	0.92
Time from 2nd dose to sample		-0.34	0.05
IgG in breast milk and ...	44		
Time from childbirth to sample		0.04	0.75
Time from 2nd dose to sample		0.21	0.16
IgA in breast milk and ...	43		
Time from childbirth to sample		<b>-0.35</b>	<b>0.02</b>
Time from 2nd dose to sample		-0.17	0.27

532

533

534

535 **Table S3. Antibody levels were not significantly correlated with maternal BMI**

Correlation between maternal BMI and the following antibody levels:	n	Spearman correlations	
		rho	p
After 1st dose			
IgG in maternal blood	24	-.071	.74
IgG in milk	35	-.029	.87
IgA in milk	38	-.204	.22
4-10 weeks after 2nd dose			
IgG in maternal blood	32	.113	.54
IgG in milk	44	-.101	.51
IgA in milk	43	.115	.46

536

537

538 **Table S4. Follow up maternal and infant blood samples characteristics and anti-SARS-CoV2 IgG levels**

Participant #	Participant Cohort:	Infant sex	Infant age at sample date (months):	Infant age at 1st dose (months)	Time since 1st dose until infant sample collection (days)	Infant anti-SARS-CoV2 IgG antibodies (RFU):	Maternal anti-SARS-CoV2 IgG antibodies (RFU):	Vaccine type:
1	Lactating	Female	0-3	0-3	84	6	2768	mRNA-1237
2	Lactating	Male	0-3	0-3	58	2	1791	mRNA-1237
3	Lactating	Female	0-3	0-3	64	0	1638	BNT162b2
4	Lactating	Female	3-6	0-3	67	4	5028	mRNA-1237
5	Lactating	Female	3-6	0-3	61	6	3449	mRNA-1237
6	Lactating	Male	6-9	3-6	81	7	3292	mRNA-1237
7	Lactating	Male	9-12	6-9	103	2	1574	mRNA-1237
8	Lactating	Male	>12	9-12	62	3	3418	BNT162b2
9	Pregnant	male	0-3	-2	129	812	271	BNT162b2
10	Pregnant	female	0-3	-2	125	1604	288	mRNA-1237

539 Note: negative values in infant age represent days before delivery. RFU>50 considered as positive value.

540



