

1 **SARS-CoV-2 antibody prevalence and determinants**
2 **of six ethnic groups living in Amsterdam, the Netherlands:**
3 **a population-based cross-sectional study, June-October 2020**

4 **Running title**

5 SARS-CoV-2 seroprevalence and ethnicity

6 **Authors**

7 Liza Coyer^{1,2}, Anders Boyd^{1,3}, Janke Schinkel⁴, Charles Agyemang⁵, Henrike Galenkamp⁵, Anitra D M
8 Koopman⁵, Tjalling Leenstra¹, Eric P Moll van Charante^{5,7}, Bert-Jan H van den Born⁸, Anja Lok⁹,
9 Arnoud Verhoeff^{10,11}, Aeilko H Zwinderman¹², Suzanne Jurriaans⁴, Lonneke A van Vught^{7,13,14}, Karien
10 Stronks⁵, Maria Prins^{1,2}

11 **Affiliations**

12 ¹ Department of Infectious Diseases, Public Health Service of Amsterdam, Amsterdam, the
13 Netherlands

14 ² Amsterdam UMC, Department of Infectious Diseases, Amsterdam Infection and Immunity (All),
15 University of Amsterdam, Amsterdam, the Netherlands

16 ³ Stichting HIV Monitoring, Amsterdam, the Netherlands

17 ⁴ Amsterdam UMC, Department of Medical Microbiology, University of Amsterdam, Amsterdam,
18 the Netherlands

19 ⁵ Amsterdam UMC, Department of Public and Occupational Health, Amsterdam Public Health
20 Research Institute, University of Amsterdam, Amsterdam, the Netherlands

21 ⁶ Amsterdam UMC, Department of Epidemiology and Biostatistics, Amsterdam Public Health
22 Research Institute, VU University Amsterdam, Amsterdam, the Netherlands

NOTE: This preprint reports new research that has not been certified by peer review and should not be used to guide clinical practice.

23 ⁷ Amsterdam UMC, Department of General Practice, Amsterdam Public Health Research Institute,
24 University of Amsterdam, Amsterdam, the Netherlands

25 ⁸ Amsterdam UMC, Department of Vascular Medicine, Amsterdam Cardiovascular Sciences,
26 University of Amsterdam, Amsterdam, the Netherlands

27 ⁹ Amsterdam UMC, Department of Psychiatry, Amsterdam Public Health Research Institute, Center
28 for Urban Mental Health, University of Amsterdam, Amsterdam, the Netherlands

29 ¹⁰ Department of Epidemiology, Health Promotion & Healthcare Innovation, Public Health Service
30 of Amsterdam, Amsterdam, the Netherlands

31 ¹¹ Department of Sociology, University of Amsterdam, Amsterdam, the Netherlands

32 ¹² Amsterdam UMC, Department of Clinical Epidemiology, Biostatistics and Bioinformatics,
33 University of Amsterdam, Amsterdam, the Netherlands

34 ¹³ Amsterdam UMC, Center for Experimental Molecular Medicine, University of Amsterdam,
35 Amsterdam, the Netherlands

36 ¹⁴ Amsterdam UMC, Department of Intensive Care Medicine, University of Amsterdam, Amsterdam,
37 the Netherlands

38 **Contact details corresponding author**

39 Liza Coyer

40 Nieuwe Achtergracht 100

41 1018 WT Amsterdam

42 Phone: +31 20 555 3873

43 Email: lcoyer@ggd.amsterdam.nl

44 **Keywords**

45 HELIUS study; SARS-CoV-2; COVID-19; infection, seroprevalence; serology, antibody; ethnicity

46 **Abstract**

47 **Background**

48 Ethnic minorities have higher rates of SARS-CoV-2 diagnoses, but little is known about ethnic
49 differences in past exposure. We aimed to determine whether prevalence and determinants of
50 SARS-CoV-2 exposure varied between six ethnic groups in Amsterdam, the Netherlands.

51 **Methods**

52 Participants aged 25-79 years enrolled in a population-based prospective cohort were randomly
53 selected within ethnic groups and invited to test for SARS-CoV-2-specific antibodies and answer
54 COVID-19 related questions. We estimated prevalence and determinants of SARS-CoV-2 exposure
55 within ethnic groups using survey-weighted logistic regression adjusting for age, sex and calendar
56 time.

57 **Results**

58 Between June 24-October 9, 2020, we included 2497 participants. Adjusted SARS-CoV-2
59 seroprevalence was comparable between ethnic-Dutch (25/498; 5.5%, 95%CI=3.2-7.9), South-Asian
60 Surinamese (22/451; 4.8%, 95%CI=2.1-7.5), African Surinamese (22/400; 8.2%, 95%CI=3.0-13.4),
61 Turkish (30/408; 7.8%, 95%CI=4.3-11.2) and Moroccan (32/391; 7.0%, 95%CI=4.0-9.9) participants,
62 but higher among Ghanaians (95/327; 26.5%, 95%CI=18.7-34.4). 57.1% of SARS-CoV-2-positive
63 participants did not suspect or were unsure of being infected, which was lowest in African
64 Surinamese (18.2%) and highest in Ghanaians (90.5%). Determinants of SARS-CoV-2 exposure
65 varied across ethnic groups, while the most common determinant was having a household member
66 suspected of infection. In Ghanaians, seropositivity was associated with older age, larger household
67 sizes, living with small children, leaving home to work and attending religious services.

68 **Conclusions**

69 No remarkable differences in SARS-CoV-2 seroprevalence were observed between the largest
70 ethnic groups in Amsterdam after the first wave of infections. The higher infection seroprevalence
71 observed among Ghanaians, which passed mostly unnoticed, warrants wider prevention efforts and
72 opportunities for non-symptom-based testing.

73 Introduction

74 Data from the United Kingdom (UK) and United States (US) suggest that certain ethnic minority
75 populations have been disproportionately affected by the coronavirus disease 2019 (COVID-19),
76 caused by SARS-CoV-2. In both countries, a relatively higher number of SARS-CoV-2 polymerase
77 chain reaction (PCR)-positive or clinically-diagnosed COVID-19 cases were observed among ethnic
78 minority groups, particularly people of African and Asian descent.[1-3] The underlying causes for
79 these disparities might include work-related exposure, housing conditions, access to healthcare,
80 help-seeking behavior, and language proficiency.[4-6]

81 Little is known about ethnic differences in SARS-CoV-2 infections outside the UK and US. This is of
82 particular concern for larger cities in Europe, including the Dutch capital Amsterdam, where half the
83 population comprises migrants, including people with foreign-born parents.[7] Amsterdam
84 witnessed its first confirmed case of SARS-CoV-2 on February 29, 2020 and by December 31, 2020,
85 there were more than 50,000 confirmed infections, 1300 COVID-19-related hospitalizations and 500
86 COVID-19-related deaths.[8] If SARS-CoV-2 infection prevalence is increased in specific ethnic
87 groups, targeted prevention measures could be instated to help minimize the risk of further
88 transmission.

89 Ethnic differences in SARS-CoV-2 infection prevalence could be studied using COVID-19
90 notification registries. However, since the testing policy in the Netherlands has changed several
91 times and until June 1, 2020, testing was largely restricted to symptomatic health care workers or
92 those living or working in long-term care facilities, these data are prone to differential testing
93 uptake. Ethnic differences in testing uptake could be further exacerbated by testing access,
94 willingness to test and disease perceptions. Another limitation of registries is that migration
95 background is often missing. Other data are therefore needed to estimate seroprevalence within
96 specific ethnic groups in Amsterdam.

97 The Healthy life in an Urban Setting (HELIUS) study is a large, population-based cohort study
98 among six different ethnic groups, which was established with the aim to investigate mechanisms
99 underlying the impact of ethnicity on communicable and non-communicable diseases.[9] From
100 individuals actively enrolled in this study, we determined the prevalence and determinants of
101 exposure to SARS-CoV-2 between the largest ethnic groups in Amsterdam.

102 **Methods**

103 *Study design and population*

104 The HELIUS study is a multiethnic cohort study conducted in Amsterdam, the Netherlands, which
105 focuses on cardiovascular disease, mental health, and infectious diseases. Detailed procedures have
106 been previously described.[9] Briefly, HELIUS includes persons of Dutch, South-Asian Surinamese,
107 African Surinamese, Ghanaian, Moroccan, and Turkish origin, aged between 18 and 70 years at
108 inclusion. A random sample of persons, stratified by ethnic origin, was taken from the municipality
109 register of Amsterdam and subjects were invited to participate. Between January 2011 and
110 December 2015, a total of 24,789 individuals were included.[9] Participants filled in a self-
111 administered questionnaire and underwent a physical examination during which biological samples
112 were obtained. Ethical approval for the HELIUS study was obtained from the Academic Medical
113 Center Ethical Review Board. All participants provided written informed consent.

114 Ethnicity was defined according to the country of birth of the participant and their parents.[9]
115 Participants were considered to be of non-Dutch ethnic origin if (i) they were born abroad and had
116 at least one parent born abroad (first generation) or (ii) they were born in Netherlands but both their
117 parents were born abroad (second generation). Participants of Dutch origin were born in the
118 Netherlands with both parents who were born in the Netherlands. Surinamese participants were
119 further classified as African Surinamese, South-Asian Surinamese, and Javanese/other/unknown
120 Surinamese, based on self-reporting.

121 A cross-sectional, serological substudy was performed in participants of the HELIUS study from 24
122 June to 9 October 2020. Participants were randomly selected within each ethnic group and asked to
123 participate in the substudy. Serum samples for assessment of SARS-CoV-2 antibodies were
124 collected by venipuncture and stored at -20°C. Trained interviewers asked participants questions on
125 uptake of COVID-19-related prevention measures, potential exposure, infection, symptoms and
126 disease.

127 *Outcomes*

128 SARS-CoV-2 exposure was determined by the presence of SARS-CoV-2 antibodies. SARS-CoV-2-
129 specific antibodies were determined using the WANTAI SARS-CoV-2 Ab Elisa (Wantai Biological
130 Pharmacy Enterprise Co., Beijing, China) according to the manufacturer's instructions. This Elisa
131 detects IgA, IgM and IgG against the receptor binding domain of the S-protein of SARS-CoV-2.[10]

132 *Determinants*

133 We defined the following potential determinants: *from the baseline visit of the HELIUS study*–
134 demographics (i.e. age, sex, ethnicity, migration generation, city district), socio-economic factors
135 (i.e. educational level, working status, occupational level, number of people in household), access-
136 to-healthcare indicators (i.e. proficiency with Dutch language, health literacy); *from the COVID-19*
137 *substudy visit*–job setting, household members, suspected being infected, thinking household
138 member/steady partner was infected, household member hospitalized for COVID-19, type of
139 people living in household, travelling abroad in 2020 and COVID-19 behaviors in the past week (i.e.
140 number of times leaving the house, type of locations visited, number of visitors, frequency of using
141 public transportation).

142 *Statistical analysis*

143 SARS-CoV-2 seroprevalence, along with 95% confidence intervals (CI), was modeled per ethnic
144 group using univariable logistic regression. Seroprevalence was then modeled per ethnic group
145 while correcting for sampling, accounting for the population structure of ethnic groups in
146 Amsterdam (i.e. post-stratification), and adjusting for differences in age, sex and calendar time
147 (before/after 15 August 2020, based on the onset of the second wave of SARS-CoV-2 infections in
148 the Netherlands[8]) between ethnic groups. For sampling, the probability of being invited for the
149 COVID-19 substudy (as the proportion of participants invited among those in active follow-up in the
150 parent study) was calculated, as was the conditional probability of participating in the COVID-19
151 substudy (given the participant's ethnicity, age, educational level, working status and health

152 literacy). The product of the two probabilities was taken and the inverse of this result, standardized
153 to one, was used as a sampling weight. For post-stratification, a weight was assigned corresponding
154 to the proportion representing the Amsterdam population of each stratum of age (20-44, 45-54, 55-
155 59, 60-79 years), sex (male, female) and ethnicity (Surinamese, Ghanaian, Moroccan, Turkish,
156 Dutch). Sampling and post-stratification weights were placed in a multivariable logistic regression
157 model with covariates ethnicity, age, sex, and calendar time. Given the weighting scheme of this
158 study, variance was calculated with the designed-based Taylor series linearization method using the
159 'svy' commands in STATA. Differences between ethnic groups were tested in the model using the
160 Wald χ^2 test.

161 Seroprevalence was regressed on age (in restricted cubic splines with 3 knots) with sample and
162 post-stratification weights, within subpopulations of ethnic groups. The mean and 95%CI of
163 predicted seroprevalence was plotted over age in years.

164 To identify determinants of past SARS-CoV-2 infection within ethnic groups, univariable
165 associations between potential determinants and SARS-CoV-2 seropositivity were evaluated. The
166 odds ratios (OR) comparing the odds of seroprevalence across levels of each determinant, and their
167 95% confidence intervals (CI), were estimated using logistic regression. P-values were obtained
168 using the Wald χ^2 test. All covariates with a P -value ≤ 0.2 in univariable analyses were then included
169 in a multivariable model and after assessing covariate distributions and collinearity, variables with a
170 P -value ≥ 0.05 above this threshold were removed in backwards-stepwise fashion until only variables
171 with a P -value < 0.05 were retained in a final multivariable model. All models included sampling and
172 post-stratification weights. We forced calendar time in all models.

173 Statistical significance was defined at a P -value < 0.05 . All analyses were conducted using Stata 15.1
174 (StataCorp, College Station, TX, USA).

175 **Results**

176 *Study population*

177 Of the 16,889 HELIUS participants who were in active follow-up in 2019-2020, 11,080 (65.6%) were
178 invited (Figure 1). Of these, 2497 (22.5%) were included in the COVID-19 substudy. The response
179 rate varied across ethnic groups, from 15.3-17.2% among Ghanaian, Turkish or Moroccan
180 participants to 49.9% among Dutch participants. Detailed information on differences between
181 HELIUS participants who were and were not invited, and between invited participants who were
182 and were not included, are presented in Supplementary Table 1. Briefly, invited individuals who
183 were included had obtained a slightly higher educational level, were more likely to be employed and
184 were more likely to have adequate health literacy level compared to those who were invited but not
185 included.

186 Number included per month within ethnic groups is presented in Supplementary Figure 1. Of 2497
187 included participants, 503 (20.1%) were of Dutch origin, 453 (18.1%) South-Asian Surinamese, 407
188 (16.3%) African Surinamese, 331 (13.3%) Ghanaian, 409 (16.4%) Turkish and 394 (15.8%) Moroccan
189 (Supplementary Table 1, Table 1). The median age of included participants was 54 (interquartile
190 range [IQR]: 44-61) and 56.6% were female. In the 1994 participants of non-Dutch origin, the
191 percentage of first-generation migrants was lowest in the Turkish group (74.8%) and highest in the
192 Ghanaian group (98.2%). Dutch participants were the most likely to have a higher vocational or
193 university degree (67.0%) and be employed (75.5%) compared to other ethnicities.

194 *SARS-CoV-2 seroprevalence*

195 Of 2497 included, 2483 (99.4%) participants had a SARS-CoV-2 antibody test result. Of these 2483,
196 226 were positive, 2249 negative and 8 had an equivocal test result. The distribution of signal-to-
197 cutoff ratios for positive test results is shown per ethnic group in Supplementary Figure 2. The
198 proportion with a positive result did not increase over time in any of the ethnic groups, except for
199 the South-Asian Surinamese group (Supplementary Figure 1).

200 Unadjusted and adjusted seroprevalence estimates per ethnic group are provided in Figure 2 and
201 Supplementary Table 2. Adjusted seroprevalence was comparable between the Dutch (5.5%,
202 95%CI=3.2-7.9), South-Asian Surinamese (4.8%, 95%CI=2.1-7.5), African Surinamese (8.2%,
203 95%CI=3.0-13.4), Turkish (7.8%, 95%CI=4.3-11.2) and Moroccan (7.0%, 95%CI=4.0-9.9) groups, but
204 higher in the Ghanaian group compared to all other groups (26.5%, 95%CI=18.7-34.4, $P<0.001$).
205 Figure 3 shows adjusted seroprevalence estimates as a function of age in years for each ethnic
206 group. In the African Surinamese group, seroprevalence decreased with age. In the Ghanaian group,
207 the highest seroprevalence was observed between the ages of 50-55 years.

208 *COVID-19-related symptoms*

209 Table 2 describes SARS-CoV-2-related characteristics of included participants. Of 2497 participants,
210 348 (13.9%) suspected being infected with SARS-CoV-2, 2144 (85.9%) did not suspect or were
211 unsure of being infected. 90.5% of Ghanaian participants who tested positive did not suspect or
212 were unsure of being infected, mainly because most of these individuals had not experienced
213 symptoms (58.7%). SARS-CoV-2 positive individuals from other ethnic groups more frequently
214 suspected being infected (range 59.1% to 81.8%).

215 *Determinants of SARS-CoV-2 seropositivity per ethnic group*

216 Univariable analysis of determinants of SARS-CoV-2 seropositivity is presented per ethnic group in
217 Supplementary Tables 2-7. In multivariable analysis (Figure 4), having a household member
218 suspected of infection was associated with SARS-CoV-2 seropositivity in Dutch, South-Asian
219 Surinamese, Turkish and Moroccan participants. Recently traveling abroad was associated with
220 seropositivity in Dutch and South-Asian Surinamese participants. In Ghanaian participants, older
221 age, increasing household size, living with children ≤ 3 years old, and leaving home to work and
222 attending religious services were associated with SARS-CoV-2 seropositivity. Increased odds for
223 SARS-CoV-2 seropositivity were also observed for leaving home to pick up medication or visiting a
224 doctor in the past week (Dutch participants), living with other adults (African Surinamese), having

- 225 had ≥ 2 unique visitors in the past week (African Surinamese), leaving home to walk or exercise
- 226 outside and using public transportation in the past week (Turkish participants) and occupational
- 227 level (Moroccan participants).

228 Discussion

229 After the first wave of the SARS-CoV-2 epidemic, we observed no evidence of ethnic disparities in
230 past SARS-CoV-2 infection between the six largest ethnic groups residing in Amsterdam, The
231 Netherlands, with the noteworthy exception of individuals of Ghanaian origin. We estimated that
232 26% of the adult Ghanaian group had developed SARS-COV-2 antibodies, compared to 5-8% of the
233 other adult ethnic groups. Increased risk of past infection was present among individuals who
234 reported a household member suspected of infection in four of the six groups. Amongst other
235 factors, leaving home to work and attending religious services were associated with seropositivity in
236 Ghanaian individuals, while using public transportation was associated with seropositivity in Turkish
237 individuals. Determinants differed between ethnicities, hence demonstrating that broad
238 generalizations of some SARS-CoV-2-related determinants might not be appropriate for individual
239 ethnic groups.

240 Among the determinants of SARS-CoV-2 seropositivity, work and travelling to work, most likely via
241 public transportation, represents a common theme in individuals of non-Dutch origin. Working from
242 home was one of the first preventive measures introduced in the Netherlands to mitigate spread of
243 SARS-CoV-2.[11] However, this was not feasible for individuals with lower professional levels and
244 jobs requiring physical presence, many of whom were of non-Dutch origin. Interestingly, Moroccan
245 individuals in the missing occupation category appeared to be more often seropositive. Previous
246 research suggests that the health of individuals in this category resembles that of individuals with
247 elementary or intermediary professions,[12] implying that working conditions could put these
248 individuals at risk of infection.

249 Although attending religious services was asked only for the past week and infections may have
250 occurred as early as in March 2020, exposure to SARS-CoV-2 during attendance at religious services
251 might have driven many of the past infections observed in the Ghanaian group. Religious services,
252 along with demonstrations, were allowed to continue without a maximum number of attendees, as

253 stipulated by Dutch law,[13] which could have fostered further spread of SARS-CoV-2. Many places
254 of worship did, however, implement social distancing measures. A nationwide study demonstrated
255 similar findings in that Orthodox-Reformed Protestants were at increased risk for SARS-CoV-2
256 seropositivity during the first wave of the pandemic.[14] Increased infection risk for people
257 attending religious services has also been demonstrated in studies from other countries.[15-17]

258 Strikingly, 90% of Ghanaians with SARS-CoV-2 antibodies did not suspect or were unsure of being
259 infected, many because they did not report experiencing any COVID-19-related symptoms. This is
260 in stark contrast to other ethnic groups in which most SARS-CoV-2 positive individuals had
261 suspected of being infected. If these infections were indeed asymptomatic in Ghanaians, many
262 could have been completely unaware of their infection and as a result, might have carried out their
263 normal routines despite unknowingly continuing transmission. The dense clustering of Ghanaians in
264 the South-East city district of Amsterdam might have also accelerated transmission, as we
265 unknowingly may have sampled a cluster of infections within a specific neighbourhood or religious
266 center. Nevertheless, there were no infection clusters within Ghanaian individuals identified during
267 the first wave by the local Public Health Service (personal communication T. Leenstra, January 27,
268 2021), when SARS-CoV-2 PCR testing was restricted. Our study clearly indicates that to reduce
269 ongoing and unnoticed transmission of SARS-CoV-2, expanded testing needs to include those
270 groups in which the proportion of asymptomatic individuals might be high, such as the Ghanaian
271 residents of Amsterdam.

272 Since data from Ghana on SARS-CoV-2 seroprevalence and proportion of asymptomatic infection
273 are limited, we cannot make any distinction on whether our finding reflects the epidemiology in the
274 country of origin or is specific to Ghanaian individuals in the Netherlands. One modelling study
275 suggests that Ghana is one of the four most affected African countries in terms of cases, but has a
276 relatively low death rate.[18] A study among Kenyan blood donors found a surprisingly high
277 seroprevalence (4.3%) from what can be inferred by the low number of COVID-19-related

278 hospitalisations and deaths.[19] Further research is needed to clarify the role of symptom burden,
279 earlier exposure to coronaviruses, or differences in genetic vulnerability to symptoms in explaining
280 the seemingly high proportion of asymptomatic cases in Ghanaians.[20,21]

281 Having a household member suspected of being infected was the most common and consistent
282 determinant of seropositivity. This finding supports observations that during periods of more
283 extensive lock-downs, most transmissions occur in household settings and is related to
284 symptomatic infection, age distribution and social interactions within households.[22-24] Other
285 household determinants of seropositivity were observed in specific ethnic groups and included
286 living with other adults, living with children ≤ 3 years old, and larger household sizes.

287 In the Netherlands, a series of restrictions was introduced in mid-March, when the spread of SARS-
288 CoV-2 was still limited.[11] The finding that seroprevalence did not differ between ethnic groups,
289 other than Ghanaian, implies that these restrictive measures were able to prevent the spread of
290 infection equally across ethnicities. Furthermore, additional data from individuals participating in
291 the parent HELIUS study showed that non-ethnic Dutch groups in general were as likely as ethnic-
292 Dutch to adhere to prevention measures (personal communication F. Chilunga, January, 27 2021). It
293 should be mentioned that our results also stem from a setting where economic inequalities are not
294 prohibitive to healthcare access.[25]

295 In comparison to the seroprevalence estimates, people from large ethnic groups (Netherlands
296 Antilles, Morocco, Surinam, Turkey, Ghana) had increased hospitalisation rates compared to ethnic
297 Dutch individuals living in Amsterdam between February and May 2020,[26] as shown in other
298 settings.[2,3] In addition, individuals with a migration background living in the Netherlands had a
299 higher excess mortality during the first six weeks of the COVID-19 pandemic.[27] Our data suggest
300 that, apart from Ghanaians, the increased rates of hospitalisations and deaths in non-Dutch ethnic
301 groups during this period cannot be explained by a higher infection rate. The severity of COVID-19
302 can be impacted to a large extent by underlying comorbidities,[28] which vary across ethnic

303 groups[9] and could explain differences in severity.[29] Healthcare inequalities, racism,
304 stigmatisation and discrimination witnessed by ethnic minorities and differences in healthcare
305 seeking-behaviour may provide additional explanations for these disparities.[30-34]

306 Strengths of our study include population-based sampling, with a large number of participants from
307 the major ethnic groups living in Amsterdam, representing various levels of socioeconomic status;
308 measuring seroprevalence via antibodies in individuals with and without previous COVID-19-related
309 symptoms; and obtaining individual-level determinants of infection. Nonetheless, there are several
310 limitations. First, our study includes a random subsample of HELIUS participants and there may be
311 selection bias. Undocumented people and other ethnic groups living in Amsterdam were not
312 included in the parent study. Second, participants in our substudy may have been more concerned
313 about their health compared to non-participants. Notwithstanding the differential response rate
314 between ethnicities in this substudy, the distribution of characteristics was largely similar between
315 included and non-included HELIUS participants. Our estimates, corrected for sampling and post-
316 stratification, were also close to those from a nationwide study that included mainly people of
317 Dutch origin and revealed a 6% seroprevalence among the Amsterdam population in June 2020.[35]
318 Data were also collected over a span of 4 months, which reflects different points of the epidemic,
319 and thus the timing of testing could bias estimates. We attempted to mitigate this issue by
320 adjusting for calendar time. Furthermore, prevention measures remained mostly the same and
321 nationwide incidence was quite stable during this period, thereby limiting the effect of this
322 bias.[8,36] Third, as this study was cross-sectional and infection occurred in the past, it is difficult to
323 make any causal inference with respect to determinants. Fourth, fear of stigmatization or
324 consequences for work might have led to an underreporting of suspected past infection and
325 symptoms, particularly among Ghanaians. Finally, circulating SARS-CoV-2 antibodies could have
326 disappeared after infection,[37,38] although this was probably limited during the study
327 period,[39,40] and individuals could not participate in this substudy if they were experiencing
328 COVID-19-related symptoms, both of which likely led to underestimated seroprevalence.

329 In conclusion, most ethnic groups displayed comparable seroprevalence after the first SARS-CoV-2
330 wave in Amsterdam, yet the substantially higher prevalence among the smaller Ghanaian
331 population, possibly infections without symptoms, is of concern. Targeted prevention campaigns
332 addressing the needs of specific ethnic groups and expanding testing opportunities are urgently
333 warranted. In addition, prevention measures for those who cannot work from home should be
334 intensified, also by bringing to light the employer's role in reducing COVID-19 transmissions.

335 **Author contributions**

336 MP, KS, JS and CA conceived, designed or oversaw the study. HG, AK and JS were involved in the
337 acquisition of data. LC and AB conducted the statistical analysis. LC, AB and MP drafted the
338 manuscript. All authors read and approved the final manuscript.

339 **Declaration of interests**

340 The authors declare that they have no competing interests related to the project.

341 **Data sharing**

342 The HELIUS data are owned by the Amsterdam UMC, location AMC, in Amsterdam, The
343 Netherlands. Any researcher can request the data by submitting a proposal to the HELIUS
344 Executive Board as outlined at <http://www.heliusstudy.nl/en/researchers/collaboration>, by email:
345 heliuscoordinator@amsterdamumc.nl. The HELIUS Executive Board will check proposals for
346 compatibility with the general objectives, ethical approvals and informed consent forms of the
347 HELIUS study. There are no other restrictions to obtaining the data and all data requests will be
348 processed in the same manner.

349 **Funding**

350 This work was supported by ZonMw (10430022010002) and the Public Health Service of
351 Amsterdam. The HELIUS study is conducted by Amsterdam UMC, location Academic Medical
352 Center and the Public Health Service of Amsterdam. Both organizations provided core support for
353 HELIUS. The HELIUS study is also funded by the Dutch Heart Foundation (2010 To84), ZonMw
354 (200500003), the European Union (FP-7) (278901), and the European Fund for the Integration of
355 non-EU immigrants (EIF) (2013EIF013).

356 **Acknowledgements**

357 The authors would like to acknowledge the HELIUS COVID-19 study participants for their
358 contribution and the HELIUS team for data collection and management. They would also like to
359 thank Anton Janssen for providing population tables.

360 References

- 361 1. Public Health England. Disparities in the risk and outcomes of COVID-19, 2020.
- 362 2. Sze S, Pan D, Nevill CR, Gray LJ, Martin CA, Nazareth J, et al. Ethnicity and clinical
363 outcomes in COVID-19: A systematic review and meta-analysis. *EClinicalMedicine*. 2020;29:100630.
- 364 3. Indseth T, Grøslund M, Arnesen T, Skyrud K, Kløvstad H, Lamprini V, et al. COVID-19 among
365 immigrants in Norway, notified infections, related hospitalizations and associated mortality: A
366 register-based study. *Scand J Public Health*. 2021;49(1):48-56.
- 367 4. Public Health England. Beyond the data: Understanding the impact of COVID-19 on BAME
368 groups, June 2020.
- 369 5. Bhala N, Curry G, Martineau AR, Agyemang C, Bhopal R. Sharpening the global focus on
370 ethnicity and race in the time of COVID-19. *The Lancet*. 2020;395(10238):1673-6.
- 371 6. Martin CA, Jenkins DR, Minhas JS, Gray LJ, Tang J, Williams C, et al. Socio-demographic
372 heterogeneity in the prevalence of COVID-19 during lockdown is associated with ethnicity and
373 household size: Results from an observational cohort study. *EClinicalMedicine*. 2020;25:100466.
- 374 7. Statistics Netherlands (CBS). Bevolking; leeftijd, migratieachtergrond, geslacht, regio, 1 jan.
375 1996-2020. Available from:
376 <https://opendata.cbs.nl/statline/#/CBS/nl/dataset/37713/table?fromstatweb>. Accessed 6 January
377 2021.
- 378 8. National Institute for Public Health and the Environment, Ministry of Health, Welfare and
379 Sport. Current information about COVID-19 (novel coronavirus) 2020. Available from:
380 <https://www.rivm.nl/en/novel-coronavirus-covid-19/current-information>. Accessed 6 January 2021.
- 381 9. Snijder MB, Galenkamp H, Prins M, Derks EM, Peters RJG, Zwinderman AH, et al. Cohort
382 profile: the Healthy Life in an Urban Setting (HELIUS) study in Amsterdam, The Netherlands. *BMJ*
383 *Open*. 2017;7(12):e017873.

- 384 10. GeurtsvanKessel CH, Okba NMA, Igloi Z, Bogers S, Embregts CWE, Laksono BM, et al. An
385 evaluation of COVID-19 serological assays informs future diagnostics and exposure assessment. *Nat*
386 *Commun.* 2020;11(1):3436.
- 387 11. Dutch Government. Nieuwe maatregelen tegen verspreiding coronavirus in Nederland, 12
388 March 2020. Available from: [https://www.rijksoverheid.nl/actueel/nieuws/2020/03/12/nieuwe-](https://www.rijksoverheid.nl/actueel/nieuws/2020/03/12/nieuwe-maatregelen-tegen-verspreiding-coronavirus-in-nederland)
389 [maatregelen-tegen-verspreiding-coronavirus-in-nederland](https://www.rijksoverheid.nl/actueel/nieuws/2020/03/12/nieuwe-maatregelen-tegen-verspreiding-coronavirus-in-nederland). Accessed 27 January 2021.
- 390 12. Galenkamp H, van Oers H, Stronks K. To what extent do socioeconomic inequalities in SRH
391 reflect inequalities in burden of disease? The HELIUS study. *J Public Health (Oxf)*. 2020;42(4):e412-
392 e20.
- 393 13. Dutch Government. Dutch measures against coronavirus: Rules that apply indoors and
394 outdoors. Available from: [https://www.government.nl/topics/coronavirus-covid-19/tackling-new-](https://www.government.nl/topics/coronavirus-covid-19/tackling-new-coronavirus-in-the-netherlands/public-life)
395 [coronavirus-in-the-netherlands/public-life](https://www.government.nl/topics/coronavirus-covid-19/tackling-new-coronavirus-in-the-netherlands/public-life). Accessed 27 January 2021.
- 396 14. Vos ERA, den Hartog G, Schepp RM, Kaaijk P, van Vliet J, Helm K, et al. Nationwide
397 seroprevalence of SARS-CoV-2 and identification of risk factors in the general population of the
398 Netherlands during the first epidemic wave. *J Epidemiol Community Health*. 2020.
- 399 15. Liu T, Gong D, Xiao J, Hu J, He G, Rong Z, et al. Cluster infections play important roles in the
400 rapid evolution of COVID-19 transmission: A systematic review. *International journal of infectious*
401 *diseases : IJID : official publication of the International Society for Infectious Diseases*. 2020;99:374-
402 80.
- 403 16. James A, Eagle L, Phillips C, Hedges DS, Bodenhamer C, Brown R, et al. High COVID-19
404 Attack Rate Among Attendees at Events at a Church - Arkansas, March 2020. *MMWR Morb Mortal*
405 *Wkly Rep*. 2020;69(20):632-5.
- 406 17. Yong SEF, Anderson DE, Wei WE, Pang J, Chia WN, Tan CW, et al. Connecting clusters of
407 COVID-19: an epidemiological and serological investigation. *Lancet Infect Dis*. 2020;20(7):809-15.
- 408 18. Lukman AF, Rauf RI, Abiodun O, Oludoun O, Ayinde K, Ogundokun RO. COVID-19
409 prevalence estimation: Four most affected African countries. *Infect Dis Model*. 2020;5:827-38.

- 410 19. Uyoga S, Adetifa IMO, Karanja HK, Nyagwange J, Tuju J, Wanjiku P, et al. Seroprevalence of
411 anti-SARS-CoV-2 IgG antibodies in Kenyan blood donors. *Science*. 2021;371(6524):79-82.
- 412 20. Ng KA-O, Faulkner NA-O, Cornish GA-O, Rosa AA-O, Harvey R, Hussain SA-OX, et al.
413 Preexisting and de novo humoral immunity to SARS-CoV-2 in humans. *Science*.
414 2020;370(6522):1339-43.
- 415 21. Sette A, Crotty SA-O. Pre-existing immunity to SARS-CoV-2: the knowns and unknowns.
416 *Nat Rev Immunol*. 2020;20(8):457-8.
- 417 22. Madewell ZJ, Yang Y, Longini IM, Jr., Halloran ME, Dean NE. Household Transmission of
418 SARS-CoV-2: A Systematic Review and Meta-analysis. *JAMA Network Open*. 2020;3(12):e2031756-
419 e.
- 420 23. Shen M, Peng Z, Guo Y, Rong L, Li Y, Xiao Y, et al. Assessing the effects of metropolitan-
421 wide quarantine on the spread of COVID-19 in public space and households. *Int J Infect Dis*.
422 2020;96:503-5.
- 423 24. Sun K, Wang W, Gao L, Wang Y, Luo K, Ren L, et al. Transmission heterogeneities, kinetics,
424 and controllability of SARS-CoV-2. *Science*. 2021;371(6526):eabe2424.
- 425 25. Organisation for Economic Co-operation and Development. Health for Everyone? Social
426 Inequalities in Health and Health Systems. Paris, France: OECD Health Policy Studies; 2019.
- 427 26. Coyer L, Wynberg E, Buster M, Wijffels C, Prins M, Schreijer A, et al. The first wave of
428 COVID-19 in the greater Amsterdam area, the Netherlands. Presented at: ESCMID Conference on
429 Coronavirus Disease (ECCVID), 23-25 September 2020.
- 430 27. Kunst A, de Visser M, Stoeldraijer L, Harmsen C. Oversterfte tijdens de eerste zes weken
431 van de corona-epidemie: Sociaal-demografische en geografische verschillen. Centraal Bureau voor
432 Statistiek; 2020. Available from: [https://www.cbs.nl/nl-nl/achtergrond/2020/20/oversterfte-tijdens-](https://www.cbs.nl/nl-nl/achtergrond/2020/20/oversterfte-tijdens-de-eerste-zes-weken-van-de-corona-epidemie)
433 [de-eerste-zes-weken-van-de-corona-epidemie](https://www.cbs.nl/nl-nl/achtergrond/2020/20/oversterfte-tijdens-de-eerste-zes-weken-van-de-corona-epidemie).

- 434 28. Wiersinga WJ, Rhodes A, Cheng AC, Peacock SJ, Prescott HC. Pathophysiology,
435 Transmission, Diagnosis, and Treatment of Coronavirus Disease 2019 (COVID-19): A Review. JAMA.
436 2020;324(8):782-93.
- 437 29. Raharja A, Tamara A, Kok LT. Association Between Ethnicity and Severe COVID-19 Disease:
438 a Systematic Review and Meta-analysis. J Racial Ethn Health Disparities. 2020:1-10.
- 439 30. Webb Hooper M, Nápoles AM, Pérez-Stable EJ. COVID-19 and Racial/Ethnic Disparities.
440 JAMA. 2020;323(24):2466-7.
- 441 31. Egede LE, Walker RJ. Structural Racism, Social Risk Factors, and Covid-19 — A Dangerous
442 Convergence for Black Americans. New England Journal of Medicine. 2020;383(12):e77.
- 443 32. Bambra C, Riordan R, Ford J, Matthews F. The COVID-19 pandemic and health inequalities.
444 Journal of Epidemiology and Community Health. 2020;74(11):964.
- 445 33. Schmengler H, Ikram UZ, Snijder MB, Kunst AE, Agyemang C. Association of perceived
446 ethnic discrimination with general and abdominal obesity in ethnic minority groups: the HELIUS
447 study. J Epidemiol Community Health. 2017;71(5):453-60.
- 448 34. Suurmond J, Rosenmöller DL, El Mesbahi H, Lamkaddem M, Essink-Bot ML. Barriers in
449 access to home care services among ethnic minority and Dutch elderly--a qualitative study. Int J
450 Nurs Stud. 2016;54:23-35.
- 451 35. National Institute for Public Health and the Environment. PIENTER Corona studie:
452 Resultaten. Available from: <https://www.rivm.nl/pienter-corona-studie/resultaten>. Accessed 22
453 February 2021.
- 454 36. Dutch Government. Vermijd drukte, houd 1,5 meter afstand 2020, 6 May 2020. Available
455 from: <https://www.rijksoverheid.nl/actueel/nieuws/2020/05/06/vermijd-drukke-houd-15-meter-afstand>. Accessed 6 January 2021.
- 457 37. Ibarondo FJ, Fulcher JA, Goodman-Meza D, Elliott J, Hofmann C, Hausner MA, et al. Rapid
458 Decay of Anti-SARS-CoV-2 Antibodies in Persons with Mild Covid-19. N Engl J Med.
459 2020;383(11):1085-7.

- 460 38. Choe PG, Kim KH, Kang CK, Suh HJ, Kang E, Lee SY, et al. Antibody Responses 8 Months
461 after Asymptomatic or Mild SARS-CoV-2 Infection. *Emerg Infect Dis.* 2020;27(3).
- 462 39. Wajnberg A, Amanat F, Firpo A, Altman DR, Bailey MJ, Mansour M, et al. Robust
463 neutralizing antibodies to SARS-CoV-2 infection persist for months. *Science.* 2020;370(6521):1227.
- 464 40. Gudbjartsson DF, Norddahl GL, Melsted P, Gunnarsdottir K, Holm H, Eythorsson E, et al.
465 Humoral Immune Response to SARS-CoV-2 in Iceland. *New England Journal of Medicine.*
466 2020;383(18):1724-34.
- 467
- 468

469 **Tables**

470 **Table 1. Characteristics of the HELIUS participants included in the COVID-19 study, by ethnic group (N=2497), Amsterdam, the Netherlands, 24**
 471 **June - 9 October 2020**

Characteristic	Dutch (n=503)	South-Asian Surinamese (n=453)	African Surinamese (n=407)	Ghanaian (n=331)	Turkish (n=409)	Moroccan (n=392)	P-value
	n (%)	n (%)	n (%)	n (%)	n (%)	n (%)	
Sex							
Male	237 (47.1%)	179 (39.5%)	165 (40.5%)	145 (43.8%)	184 (45.0%)	173 (43.9%)	0.19
Female	266 (52.9%)	274 (60.5%)	242 (59.5%)	186 (56.2%)	225 (55.0%)	221 (56.1%)	
Age in years on 1 January 2020							
Median [IQR]	57 [45-66]	56[47-63]	59 [50-65]	54 [47-59]	48 [40-56]	49 [39-56]	<0.001
Migration generation							
1 st	N.A.	370 (81.7%)	355 (87.2%)	325 (98.2%)	306 (74.8%)	300 (76.1%)	<0.001
2 nd	N.A.	83 (18.3%)	52 (12.8%)	6 (1.8%)	103 (25.2%)	94 (23.9%)	
City district^a							
Centre	88 (17.5%)	18 (4.0%)	15 (3.7%)	5 (1.5%)	4 (1.0%)	12 (3.0%)	<0.001
East	99 (19.7%)	53 (11.7%)	84 (20.6%)	25 (7.6%)	66 (16.1%)	94 (23.9%)	
West	89 (17.7%)	6 (1.3%)	34 (8.4%)	19 (5.7%)	66 (16.1%)	83 (21.1%)	
South	112 (22.3%)	32 (7.1%)	28 (6.9%)	8 (2.4%)	30 (7.3%)	38 (9.6%)	
New-West	45 (8.9%)	111 (24.5%)	51 (12.5%)	18 (5.4%)	231 (56.5%)	147 (37.3%)	
Southeast	65 (12.9%)	229 (50.6%)	192 (47.2%)	254 (76.7%)	6 (1.5%)	19 (4.8%)	
Other/missing	5 (1.0%)	4 (0.9%)	3 (0.7%)	2 (0.6%)	6 (1.5%)	1 (0.3%)	
Educational level^a							
No school/elementary school	10 (2.0%)	56 (12.4%)	15 (3.7%)	78 (23.6%)	78 (19.1%)	90 (22.8%)	<0.001
Lower vocational/lower secondary school	56 (11.1%)	156 (34.4%)	124 (30.5%)	128 (38.7%)	84 (20.5%)	64 (16.2%)	
Intermediary vocational/intermediary secondary school	99 (19.7%)	137 (30.2%)	142 (34.9%)	73 (22.1%)	124 (30.3%)	125 (31.7%)	
Higher vocational/university	337 (67.0%)	103 (22.7%)	124 (30.5%)	26 (7.9%)	108 (26.4%)	94 (23.9%)	

20210222-HELIUS COVID-19 manuscript seroprevalence-vs6.3_refs_ethics

Missing	1 (0.2%)	1 (0.2%)	2 (0.5%)	26 (7.9%)	15 (3.7%)	21 (5.3%)	
Labor participation^b							
Employed	380 (75.5%)	308 (68.0%)	292 (71.7%)	203 (61.3%)	247 (60.4%)	229 (58.1%)	<0.001
Not in workforce	90 (17.9%)	47 (10.4%)	40 (9.8%)	10 (3.0%)	59 (14.4%)	63 (16.0%)	
Unemployed/on benefits	21 (4.2%)	53 (11.7%)	47 (11.5%)	60 (18.1%)	62 (15.2%)	57 (14.5%)	
Disabled	11 (2.2%)	39 (8.6%)	24 (5.9%)	28 (8.5%)	27 (6.6%)	22 (5.6%)	
Unknown/missing	1 (0.2%)	6 (1.3%)	4 (1.0%)	30 (9.0%)	14 (3.4%)	23 (5.8%)	
Occupational level^a							
Elementary occupations	5 (1.0%)	36 (7.9%)	22 (5.4%)	162 (48.9%)	52 (12.7%)	46 (11.7%)	<0.001
Lower occupations	46 (9.1%)	127 (28.0%)	101 (24.8%)	69 (20.8%)	102 (24.9%)	92 (23.4%)	
Intermediary occupations	107 (21.3%)	143 (31.6%)	146 (35.9%)	21 (6.3%)	88 (21.5%)	94 (23.9%)	
Higher occupations	203 (40.4%)	79 (17.4%)	91 (22.4%)	11 (3.3%)	51 (12.5%)	65 (16.5%)	
Scientific occupations	115 (22.9%)	20 (4.4%)	19 (4.7%)	6 (1.8%)	32 (7.8%)	10 (2.5%)	
Missing	27 (5.4%)	48 (10.6%)	28 (6.9%)	62 (18.7%)	84 (22.5%)	87 (22.1%)	
Job setting^b							
No job / caretaker only	117 (23.3%)	144 (31.8%)	120 (29.5%)	90 (27.2%)	138 (33.7%)	132 (33.5%)	<0.001
Job with no contact within 1.5 meter	96 (19.1%)	65 (14.3%)	39 (9.6%)	66 (19.9%)	67 (16.4%)	54 (13.7%)	
Other job with contact within 1.5 meter	145 (28.8%)	154 (34.0%)	131 (32.2%)	115 (34.7%)	130 (31.8%)	114 (28.9%)	
Child care/schools/higher education	62 (12.3%)	27 (6.0%)	43 (10.6%)	10 (3.0%)	25 (6.1%)	48 (12.2%)	
Bar/restaurant	12 (2.4%)	10 (2.2%)	11 (2.7%)	23 (6.9%)	6 (1.5%)	7 (1.8%)	
Hospital/long-term care facility/Health care worker elsewhere	71 (14.1%)	51 (11.3%)	63 (15.5%)	26 (7.9%)	41 (10.0%)	36 (9.1%)	
Missing	0 (0.0%)	2 (0.4%)	0 (0.0%)	1 (0.3%)	2 (0.5%)	3 (0.8%)	
Difficulty with Dutch language^a							
No	N.A.	348 (76.8%)	359 (88.2%)	41 (12.4%)	189 (46.2%)	211 (53.6%)	<0.001
Yes	N.A.	104 (23.0%)	46 (11.3%)	264 (79.8%)	206 (50.4%)	162 (41.1%)	
Missing	N.A.	1 (0.2%)	2 (0.5%)	26 (7.9%)	14 (3.4%)	21 (5.3%)	
Health literacy (SBSQ)^a							
Adequate	500 (99.4%)	437 (96.5%)	400 (98.3%)	209 (63.1%)	310 (75.8%)	308 (78.2%)	<0.001
Low	3 (0.6%)	16 (3.5%)	7 (1.7%)	97 (29.3%)	87 (21.3%)	64 (16.2%)	

Missing	0 (0.0%)	0 (0.0%)	0 (0.0%)	25 (7.6%)	12 (2.9%)	22 (5.6%)	
Diabetes mellitus^c							
No	478 (95.0%)	358 (79.0%)	362 (88.9%)	297 (89.7%)	366 (89.5%)	345 (87.6%)	<0.001
Yes	18 (3.6%)	88 (19.4%)	42 (10.3%)	30 (9.1%)	35 (8.6%)	41 (10.4%)	
Missing	7 (1.4%)	7 (1.5%)	3 (0.7%)	4 (1.2%)	8 (2.0%)	8 (2.0%)	
High blood pressure^d							
No	370 (73.6%)	261 (57.6%)	198 (48.6%)	143 (43.2%)	321 (78.5%)	305 (77.4%)	<0.001
Yes	127 (25.2%)	185 (40.8%)	207 (50.9%)	181 (54.7%)	82 (20.0%)	81 (20.6%)	
Missing	6 (1.2%)	7 (1.5%)	2 (0.5%)	7 (2.1%)	6 (1.5%)	8 (2.0%)	
Body Mass Index (kg/m2), median (IQR)^a	24 [22-27]	25 [23-28]	27 [24-29]	28 [25-31]	27 [24-31]	27 [24-30]	<0.001
Month of study visit^b							
June	86 (17.1%)	44 (9.7%)	31 (7.6%)	0 (0.0%)	0 (0.0%)	32 (8.1%)	<0.001
July	265 (52.7%)	233 (51.4%)	203 (49.9%)	38 (11.5%)	151 (36.9%)	170 (43.1%)	
August	108 (21.5%)	98 (21.6%)	110 (27.0%)	135 (40.8%)	88 (21.5%)	85 (21.6%)	
September	39 (7.8%)	75 (16.6%)	56 (13.8%)	125 (37.8%)	127 (31.1%)	74 (18.8%)	
October	5 (1.0%)	3 (0.7%)	7 (1.7%)	33 (10.0%)	43 (10.5%)	33 (8.4%)	

472 **Abbreviations:** BMI, body mass index; HELIUS, Healthy Life in an Urban Setting; IQR, interquartile range; N.A., not applicable; SBSQ, Set of Brief Screening Question ^a Presumed higher

473 exposure categories had priority, i.e. if someone was working in a school and as a health care worker, they were categorized as a health care worker. Caretakers were not included as a

474 category because many had other jobs.

475 ^a Measured at baseline (2011-2015) ^b Measured at COVID-1 visit (2020) ^c Based on self-report, increased fasting glucose (≥ 7 mmol/l) or use of glucose-lowering medication ^d Based on self-

476 report, SBP ≥ 140 mmHg, DBP ≥ 90 or blood pressure-lowering medication

477 **Table 2. SARS-CoV-2-related characteristics of the HELIUS participants included in the COVID-19 study, by ethnicity (N=2497), Amsterdam, the**
 478 **Netherlands, 24 June - 9 October 2020**

Characteristic	Dutch	South-Asian	African	Ghanaian	Turkish	Moroccan	P-value
	(n=503)	Surinamese (n=453)	Surinamese (n=407)	(n=331)	(n=409)	(n=392)	
	n (%)	n (%)	n (%)	n (%)	n (%)	n (%)	
Do you think you have been infected? (among all respondents)							
Yes, this was confirmed by a PCR test	1 (0.2%)	4 (0.9%)	5 (1.2%)	2 (0.6%)	5 (1.2%)	9 (2.3%)	<0.001
Yes, this was confirmed by a Ab test	6 (1.2%)	1 (0.2%)	1 (0.2%)	0 (0.0%)	1 (0.2%)	2 (0.5%)	
Yes, but this was not confirmed by a test	67 (13.3%)	46 (10.2%)	51 (12.5%)	16 (4.8%)	63 (15.4%)	68 (17.3%)	
No, this was confirmed by a PCR test	28 (5.6%)	22 (4.9%)	22 (5.4%)	14 (4.2%)	26 (6.4%)	17 (4.3%)	
No, this was confirmed by a Ab test	6 (1.2%)	4 (0.9%)	5 (1.2%)	2 (0.6%)	5 (1.2%)	9 (2.3%)	
No, I do not think so, but this was not confirmed by a test	178 (35.4%)	181 (40.0%)	139 (34.2%)	90 (27.2%)	112 (27.4%)	108 (27.4%)	
No, I know for certain, because I did not have any symptoms	178 (35.4%)	152 (33.6%)	144 (35.4%)	182 (55.0%)	134 (32.8%)	144 (36.5%)	
I do not know	39 (7.8%)	41 (9.1%)	40 (9.8%)	25 (7.6%)	61 (14.9%)	36 (9.1%)	
Missing	0 (0.0%)	2 (0.4%)	0 (0.0%)	0 (0.0%)	2 (0.5%)	1 (0.3%)	
Do you think you have been infected? (among SARS-CoV-2 antibody positive individuals)							
No/do not know	6 (24.0%)	9 (40.9%)	4 (18.2%)	86 (90.5%)	11 (36.7%)	13 (40.6%)	
Yes	19 (76.0%)	13 (59.1%)	18 (81.8%)	9 (9.5%)	19 (63.3%)	19 (59.4%)	
Thinks household member/steady partner was infected							<0.001
N.A.	93 (18.5%)	89 (19.6%)	104 (25.6%)	40 (12.1%)	50 (12.2%)	58 (14.7%)	
No	352 (70.0%)	321 (70.9%)	270 (66.3%)	275 (83.1%)	310 (75.8%)	281 (71.3%)	
Yes	53 (10.5%)	38 (8.4%)	33 (8.1%)	15 (4.5%)	46 (11.2%)	51 (12.9%)	
Missing	5 (1.0%)	5 (1.1%)	0 (0.0%)	1 (0.3%)	3 (0.7%)	4 (1.0%)	
Household member hospitalized for COVID-19							<0.001
N.A.	93 (18.5%)	89 (19.6%)	104 (25.6%)	40 (12.1%)	50 (12.2%)	58 (14.7%)	
No	401 (79.7%)	356 (78.6%)	302 (74.2%)	290 (87.6%)	352 (86.1%)	329 (83.5%)	

Yes	4 (0.8%)	3 (0.7%)	1 (0.2%)	0 (0.0%)	4 (1.0%)	3 (0.8%)	
Missing	5 (1.0%)	5 (1.1%)	0 (0.0%)	1 (0.3%)	3 (0.7%)	4 (1.0%)	
Number of times left home in the past week							<0.001
0-7	59 (11.7%)	144 (31.8%)	145 (35.6%)	122 (36.9%)	106 (25.9%)	101 (25.6%)	
8-11	82 (16.3%)	134 (29.6%)	99 (24.3%)	120 (36.3%)	97 (23.7%)	90 (22.8%)	
12-16	141 (28.0%)	103 (22.7%)	80 (19.7%)	58 (17.5%)	103 (25.2%)	88 (22.3%)	
17+	221 (43.9%)	70 (15.5%)	83 (20.4%)	30 (9.1%)	101 (24.7%)	113 (28.7%)	
Missing	0 (0.0%)	2 (0.4%)	0 (0.0%)	1 (0.3%)	2 (0.5%)	2 (0.5%)	
Number of unique visitors at home in the past week							
0	216 (42.9%)	218 (48.1%)	192 (47.2%)	239 (72.2%)	207 (50.6%)	209 (53.0%)	<0.001
1	89 (17.7%)	80 (17.7%)	84 (20.6%)	43 (13.0%)	48 (11.7%)	45 (11.4%)	
2-4	146 (29.0%)	120 (26.5%)	97 (23.8%)	41 (12.4%)	110 (26.9%)	102 (25.9%)	
5+	49 (9.7%)	30 (6.6%)	32 (7.9%)	6 (1.8%)	41 (10.0%)	34 (8.6%)	
Missing	3 (0.6%)	5 (1.1%)	2 (0.5%)	2 (0.6%)	3 (0.7%)	4 (1.0%)	

479 **Abbreviations:** HELIUS, Healthy Life in an Urban Setting

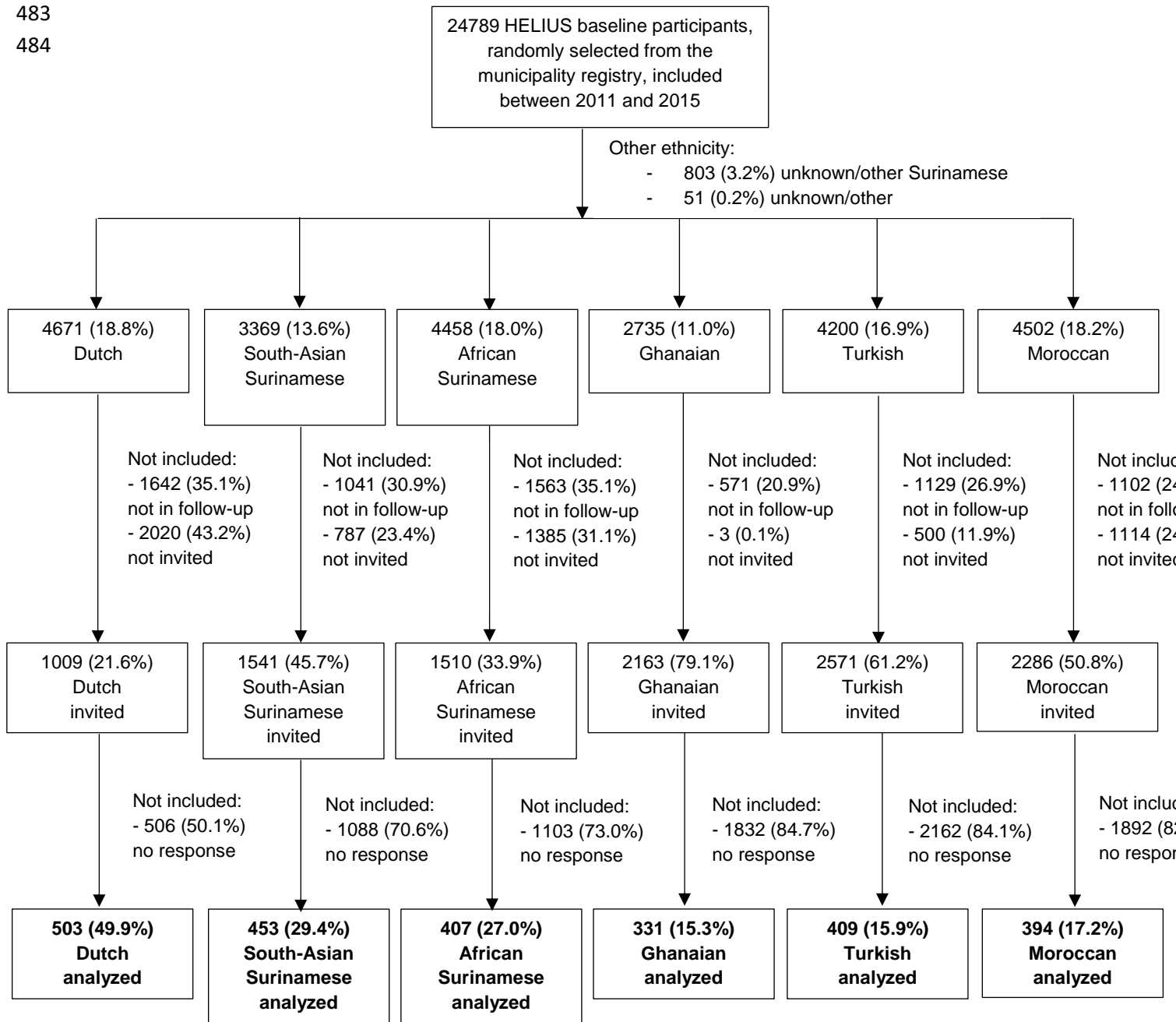
480 **Figures**

481 **Figure 1. Flowchart depicting the selection of HELIUS participants in the COVID-19 study,**

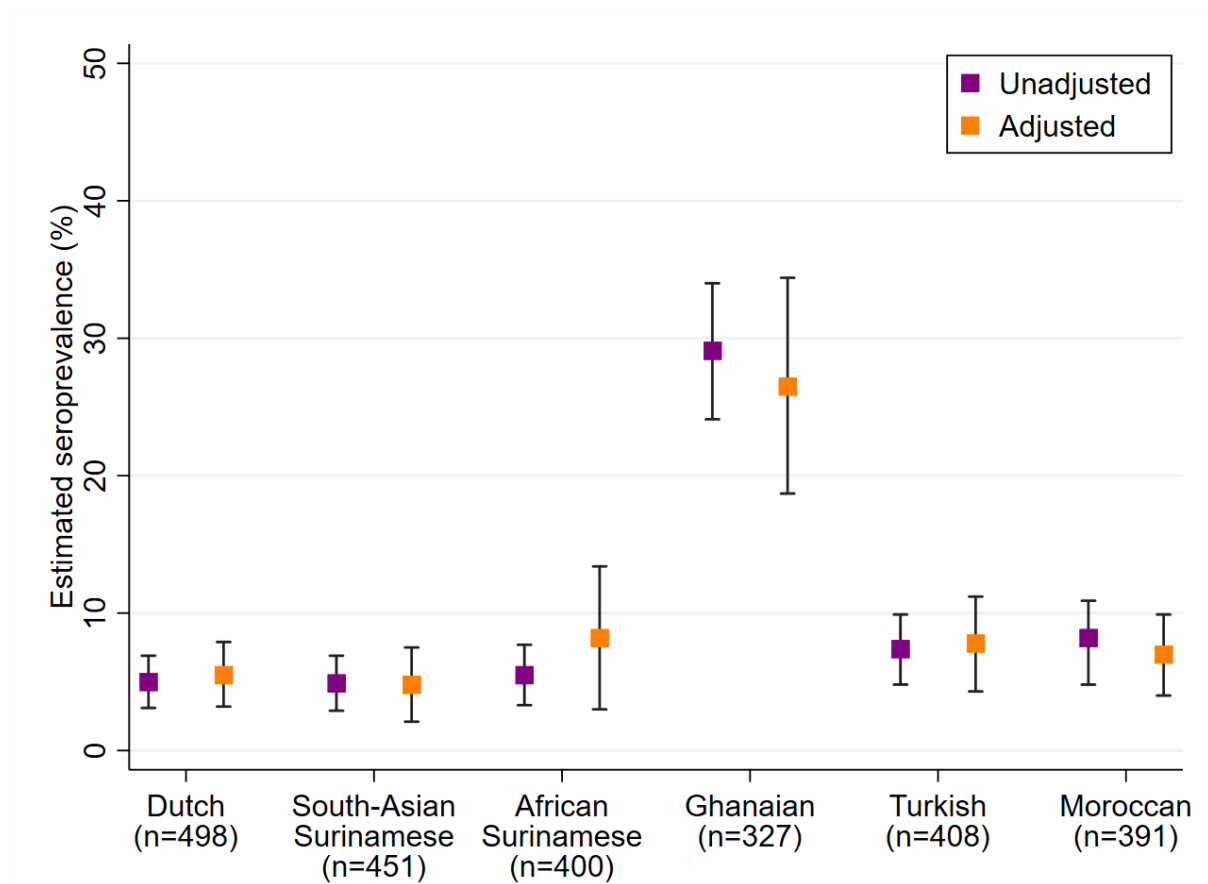
482 **Amsterdam, the Netherlands, 24 June - 9 October 2020**

483

484

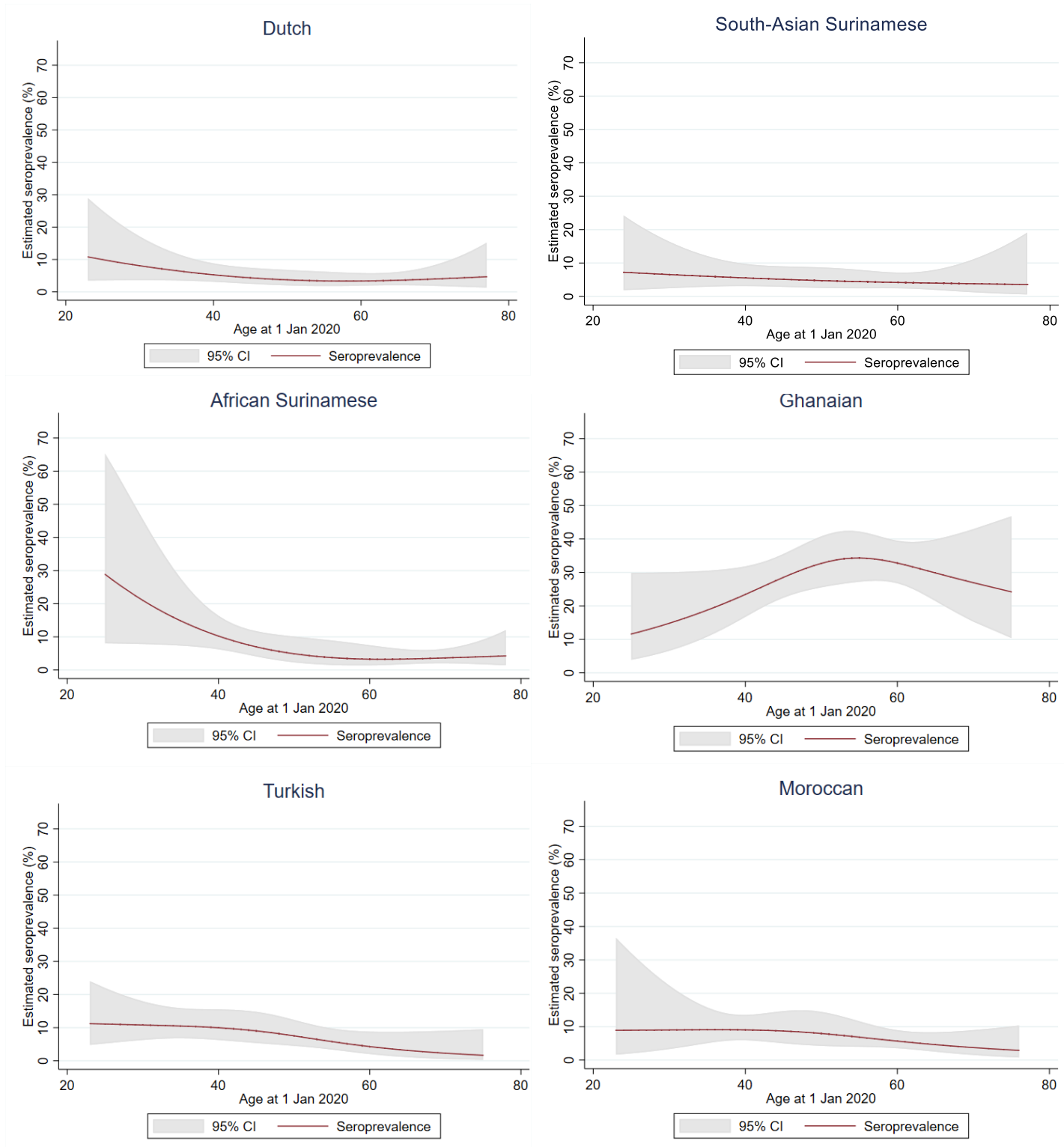


485 **Figure 2. Unadjusted and adjusted SARS-CoV-2 seroprevalence per ethnic group (N=2475),**
486 **Amsterdam, the Netherlands, 24 June - 9 October 2020**



487
488 Footnote: We excluded individuals with an equivocal result (n=8) from the seroprevalence
489 calculation. Boxes represent the seroprevalence estimate, bands the corresponding 95% confidence
490 interval. Adjusted seroprevalence estimates were corrected for sampling, accounted for the
491 population structure of ethnic groups in Amsterdam (i.e. post-stratification), and adjusted for
492 differences in age, sex and calendar time (before/after 15 August 2020) between ethnic groups.
493

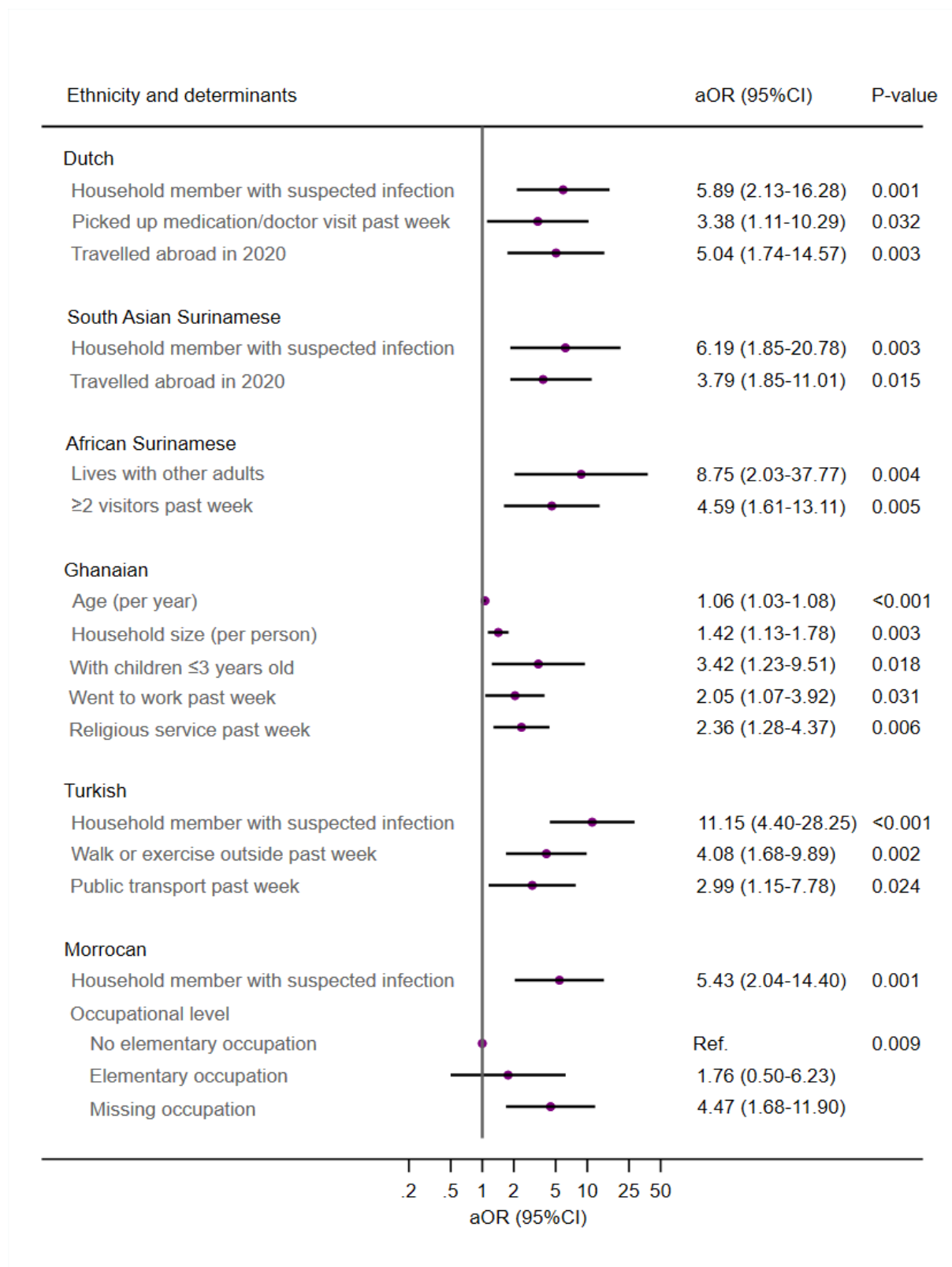
494 **Figure 3. SARS-CoV-2 seroprevalence and age by ethnic group, Amsterdam, the Netherlands,**
495 **24 June - 9 October 2020**



496 Footnote: Seroprevalence was regressed on age (in restricted cubic splines with 3 knots) with
497 sample and post-stratification weights, within subpopulations of ethnic groups.

498

499 **Figure 4. Determinants of SARS-CoV-2 seropositivity by ethnic group, HELIUS COVID-19 study,**
 500 **24 June - 9 October 2020 (multivariable analysis)**



501