

## Dissecting Disease Tolerance in *Plasmodium vivax* Malaria Using the Systemic Degree of Inflammatory Perturbation

1 **Short Title: Inflammatory Tolerance to *Plasmodium vivax* Infection**

2 **Caian L. Vinhaes<sup>1,2,3#</sup>, Thomas A. Carmo<sup>1,2,4#</sup>, Artur T. L. Queiroz<sup>1,2</sup>, Kiyoshi F.**  
3 **Fukutani<sup>1,2,5</sup>, María B Arriaga<sup>1,2,6</sup>, Marcus V. G. Lacerda<sup>7,8</sup>, Manoel Barral-**  
4 **Netto<sup>1,6,9</sup> and Bruno B. Andrade<sup>1,2,3,4,5,6\*</sup>**

5 <sup>1</sup>Instituto Gonçalo Moniz, Fundação Oswaldo Cruz (FIOCRUZ), Salvador 40296-710,  
6 Brazil;

7 <sup>2</sup>Multinational Organization Network Sponsoring Translational and Epidemiological  
8 Research (MONSTER) Initiative, Salvador 41810-710, Brazil

9 <sup>3</sup>Escola Bahiana de Medicina e Saúde Pública (EBMSP), Salvador 40290-000, Brazil

10 <sup>4</sup>Curso de Medicina, Universidade Salvador (UNIFACS), Laureate Universities,  
11 Salvador 41.720-200, Brazil

12 <sup>5</sup>Curso de Medicina, Centro Universitário Faculdade de Tecnologia e Ciências  
13 (UniFTC), Salvador 41741-590, Brazil

14 <sup>6</sup>Faculdade de Medicina, Universidade Federal da Bahia, Faculdade de Medicina,  
15 Salvador 40110-100, Brazil

16 <sup>7</sup>Instituto de Pesquisa Clínica Carlos Borborema, Fundação de Medicina Tropical Dr  
17 Heitor Vieira Dourado, Manaus 69040-000, Brazil

18 <sup>8</sup>Instituto Leônidas & Maria Deane, Fundação Oswaldo Cruz, Manaus 69057-070,  
19 Brazil

20 <sup>9</sup>Instituto Nacional de Ciência e Tecnologia, Instituto de Investigação em Imunologia,  
21 São Paulo 05403-900, Brazil

22 <sup>#</sup>These authors shared first authorship on this work.

23 **\*Corresponding author:** [bruno.andrade@fiocruz.br](mailto:bruno.andrade@fiocruz.br) (BBA)

24 **Keywords:** malaria, *Plasmodium Vivax*, inflammation, molecular degree of  
25 inflammatory imbalance, biomarkers

26

27 **Abstract**

28 Homeostatic perturbation caused by infection fosters two major defense stratagems,  
29 resistance and tolerance, which promote the host's survival. Resistance relates to the  
30 ability of the host to restrict the pathogen load. Tolerance minimizes collateral tissue  
31 damage without directly affecting pathogen fitness. These concepts have been explored  
32 mechanistically in murine models of malaria but only superficially in human disease.  
33 Indeed, individuals infected with *Plasmodium vivax* may present with asymptomatic  
34 malaria, only mild symptoms, or be severely ill. We and others have reported a diverse  
35 repertoire of immunopathological events that potentially underly susceptibility to  
36 disease severity in vivax malaria. Nevertheless, the combined epidemiologic, clinical,  
37 parasitological, and immunologic features associated with defining the disease  
38 outcomes are still not fully understood. In the present study, we perform an extensive  
39 outlining of cytokines and inflammatory proteins in plasma samples from a cohort of  
40 individuals from the Brazilian Amazon infected with *P. vivax* and presenting with  
41 asymptomatic (n=108) or symptomatic (n=134) disease (106 with mild presentation and  
42 28 with severe malaria), as well as from uninfected endemic controls (n=128) to  
43 elucidate these gaps further. We employ highly multidimensional Systems Immunology  
44 analyses using the molecular degree of perturbation to reveal nuances of a unique  
45 profile of systemic inflammation and imbalanced immune activation directly linked to  
46 disease severity as well as with other clinical and epidemiologic characteristics. The  
47 findings mapped the relationships between the systemic degree of inflammatory  
48 perturbation and parasitemia values to define the disease tolerance in vivax malaria.

49

50

## 51 **Author Summary**

52 *Plasmodium vivax* infection can result in a broad spectrum of disease manifestations,  
53 ranging from asymptomatic malaria to severe life-threatening disease. Despite  
54 significant advances in the current understanding of the critical factors associated with  
55 the disease outcomes in vivax malaria, the immunopathological events responsible for  
56 the diversity of severe manifestations in the disease remain deeply unknown. Here, a  
57 large panel of cytokines/chemokines were assessed in plasma samples from a Brazilian  
58 cohort of *P. vivax* patients presenting with asymptomatic infection or symptomatic  
59 malaria at the time of diagnosis, as well as from uninfected endemic controls, to define  
60 the relationships between systemic inflammation, disease presentation, parasitemia, and  
61 epidemiologic characteristics. In-depth analyses using the molecular degree of  
62 perturbation were employed to reveal nuances of a unique profile of systemic  
63 inflammation and imbalanced immune activation directly linked to disease severity.  
64 Moreover, the discoveries diagrammed the occurrence of disease tolerance by  
65 narrowing down the interactions between the systemic degree of inflammatory  
66 perturbation and parasitemia values in vivax malaria patients.

67

## 68 **Introduction**

69 Malaria remains a major global cause of morbidity and mortality, with devastating impact  
70 over the last 10 years, estimated by more than 200 million cases and 400,000 deaths  
71 reported per year worldwide [1]. In contrast to the burden of *Plasmodium falciparum*  
72 infection in African countries, *Plasmodium vivax* represents the predominant parasite in  
73 American regions, with noticeable incidence within the Brazilian Amazon, responsible  
74 for the vast majority of malaria cases in this area [1,2]. Also, infection with *P. vivax* is  
75 historically thought to result in milder disease presentation than that caused by *P.*  
76 *falciparum*, mostly because the latter commonly results in high parasitemia, intense  
77 hemolysis and inflammation associated with cytoadherence to small capillaries  
78 (reviewed in [3]). Nevertheless, more recently, several clinical and immunologic reports  
79 have revealed that *P. vivax* infection can clearly result in severe clinical presentations  
80 such as respiratory distress and acute kidney failure [4–6]. The exact immune  
81 mechanisms that underly susceptibility to infection and disease severity upon infection  
82 with *P. vivax* are not yet fully understood. We and others have described that older  
83 individuals who live for many years in a highly endemic area, and those who are highly  
84 exposed and had several previous malaria episodes, tend to develop asymptomatic *P.*  
85 *vivax* infection, which is associated with very low parasitemia and diminished  
86 inflammatory responses [7]. Furthermore, a broad spectrum of disease manifestations  
87 may occur among those who get sick, ranging from oligosymptomatic condition to  
88 multi-organ damage [8]. Understanding the molecular determinants of disease severity  
89 may help develop improved prophylactic and therapeutic strategies and optimize patient  
90 care.

91 The capacity to restrict the infection burden and control inflammation and immune  
92 activation are major determinants of the malaria clinical outcomes (reviewed in [9,10]).  
93 The ability to control parasite load results from anti-microbial immune responses and  
94 leads to pathogen elimination and resistance to infection [11]. Exacerbated anti-parasite  
95 immune responses promote oxidative stress and inflammatory burst, which in turn cause  
96 collateral tissue injury, named immunopathology [12]. In this scenario, the capability to  
97 minimize organic damage without directly influencing the infection burden or pathogen  
98 fitness is a critical survival strategy defined as disease tolerance [10,11,13–15]. In the  
99 context of malaria, disease tolerance is present in highly exposed individuals from  
100 endemic regions, where subjects may harbor a wide range of detectable parasitemia

101 levels without exhibiting severe clinical manifestations [16–18]. Findings from previous  
102 investigations support the idea that disease tolerance in malaria may occur as  
103 modulation of pro-inflammatory responses and dendritic cell function [19,20].

104 Furthermore, in experimental malaria models, control of the collateral tissue damage  
105 occurs through tightly regulated mechanisms such as glucose and iron metabolism,  
106 renal control, and adrenal hormones [15,21–23]. In humans, we have previously  
107 reported that metabolic adaptation to iron overload through induction of ferritin confers  
108 tolerance to *P. vivax* malaria [15]. Despite the substantial advance in the knowledge  
109 about the relevant determinants of tolerance to malaria, especially in murine models, to  
110 our knowledge no detailed characterization of the systemic inflammation and immune  
111 activation profiles related to this host defense strategy has been reported in *P. vivax*  
112 malaria. Here, we aimed to analyze the degree of systemic inflammatory imbalance in  
113 *P. vivax* patients from the Brazilian Amazon. We have compared individuals with  
114 asymptomatic, mild, or severe symptomatic disease, to define the complexity and  
115 multifactorial regulation subjacent to the malaria immunopathogenesis and the  
116 responses underlying the disease tolerance. To do that, we employed a recently reported  
117 approach named the molecular degree of inflammatory perturbation [24–28] using  
118 concentrations of a large panel of cytokines, chemokines, growth factors and acute  
119 phase proteins in peripheral blood at the time of malaria diagnosis. The findings from  
120 our in-depth analyses support the idea that disease tolerance in *P. vivax* malaria is a  
121 tightly regulated process that integrates features highly influenced by age, previous  
122 malaria episodes, and a coordinated regulation of the systemic concentrations of  
123 mediators of inflammation.

124

125

## 126 **Materials and Methods**

### 127 **Ethics Statements**

128 Written informed consent was obtained from all participants or their legally responsible  
129 guardians, and all clinical investigations were conducted according to the principles  
130 expressed in the Declaration of Helsinki. The project was approved by the institutional

131 review board of the *Faculdade de Medicina, Faculdade São Lucas*, Rondônia, Brazil,  
132 where the study was performed (protocol no. AP/CEP/55/07).

### 133 **Study Design**

134 We performed multidimensional retrospective analysis of a databank containing  
135 clinical, epidemiological and immunological data from 530 individuals from the  
136 Brazilian Amazon (Rondônia, Brazil) recruited between 2006 and 2007, as part of a  
137 project aimed at describing determinants of susceptibility to vivax malaria that was  
138 finalized in 2010. In this project, both active and passive malaria case detection were  
139 performed. These included home visits in areas of high transmission (active case  
140 detection), and study of individuals seeking care at the diagnostic centers of Brazilian  
141 National Foundation of Health (FUNASA) or in a municipal hospital in Buritis,  
142 Rondônia, Brazil (passive case detection) [6,29,35,39,50–53]. Diagnosis, recruitment  
143 details and clinical definitions were previous published [15,29,35,50–54]. To direct test  
144 the effects of *P. vivax* infection in the molecular degree of perturbation only patients  
145 with *P. vivax* mono-infection (n=242, from those 108 were classified as asymptomatic  
146 and 134 symptomatic participants) and healthy controls (n=128) were included. The  
147 exclusion criteria for the present study were: *P. falciparum* infection documented by  
148 both microscopy and nested polymerase chain reaction (PCR), HIV-1, hepatitis B and C  
149 infection, yellow fever, leptospirosis, tuberculosis, cutaneous leishmaniasis, diabetes  
150 mellitus, allergic diseases as asthma, cancer, chronic degenerative diseases, sickle cell  
151 trait and the use of hepatotoxic or immunosuppressant drugs. Blood collection for  
152 nested polymerase chain reaction (PCR) and other measurements (cytokines,  
153 chemokines, hepatic enzymes, creatinine, fibrinogen, bilirubin levels, free heme and  
154 haptoglobin) were performed at the time of study enrollment, meaning that specimens  
155 were collected at diagnosis, during acute phase of disease in symptomatic patients,  
156 before treatment initiation. Individuals without symptoms were actively recruited in  
157 their residencies by active search, mostly in remote riverine communities and had thick  
158 blood smear samples and a small aliquot of blood in EDTA tubes collected for  
159 diagnostic screening by nested PCR. The diagnosis in those individuals was performed  
160 after the clinical visit and if a positive test for malaria was found, a second visit within  
161 30 days was performed in order to search for appearance of malaria symptoms. A new  
162 sample collection was made, and a second round of diagnostic tests was performed.  
163 Subjects that remained with positive nested PCR for Plasmodium within this period of

164 30 days and presented no malaria-related symptoms, such as fever (axillary temperature  
165  $>37.8^{\circ}\text{C}$ ), chills, sweats, myalgia, arthralgia, strong headaches, nausea, vomiting,  
166 jaundice, and severe asthenia during this period were considered as asymptomatic  
167 malaria cases. During the first clinical visit (previously to the results of the diagnostic  
168 tests) all the asymptomatic individuals received counselling and were oriented to seek  
169 for health care in a malaria reference center in case symptoms appeared during the  
170 period between the 2 clinical visits. After the second clinical visit, all the patients that  
171 had positive malaria screening with microscopy and/or nested PCR were treated  
172 following the treatment guidelines of the Brazilian Ministry of Health. The plasma  
173 samples used to assess the biomarkers were collected during the second clinical visit,  
174 before the initiation of anti-malarial drugs, as previous described [39]. Clinical,  
175 demographic and epidemiological characteristics of the study participants were included  
176 in S1 Table. Considering the absence of a consensus to define severe vivax malaria,  
177 here we used a previous adapted criterion based on *P. falciparum* infection, as  
178 previously published by our group [6,35]. Raw data used in all the analyses are  
179 concatenates in S1 File.

## 180 **Laboratory Measurements**

181 Plasma levels of cytokines interleukin (IL)1- $\beta$ , IL-4, IL-6, IL-10, IL-12p70, interferon  
182 (IFN)- $\gamma$ , tumor necrosis factor (TNF)- $\alpha$ , and of C-C motif chemokine ligand (CCL)2,  
183 CCL5, C-X-C motif chemokine ligand (CXCL)9, and CXCL10 were measured using  
184 the Cytometric Bead Array - CBA<sup>®</sup> (BD Biosciences Pharmingen, San Diego, CA,  
185 USA), according to the manufacturer's protocol. The measurements of aspartate amino-  
186 transferase (AST), alanine amino-transferase (ALT), total bilirubin, direct bilirubin,  
187 creatinine, fibrinogen and C-reactive protein (CRP) were performed at the Pharmacy  
188 School of the Federal University of Bahia and at the clinical laboratory of *Faculdade*  
189 *São Lucas*, Brazil.

## 190 **Adaptation of Molecular Degree of Perturbation**

191 The molecular inflammatory perturbation is based on the molecular degree of  
192 perturbation (MDP) method, used and recently published by our group [24–28]. In the  
193 present study, we inputted the plasma concentrations of a defined set of biomarkers  
194 based on previously published studies from our group in malaria pathogenesis  
195 [15,29,35,50–54]. Thus, herein, the average plasma concentration levels and the

196 standard deviation of a baseline reference group (endemic controls) were calculated for  
197 each biomarker. The MDP score of an individual biomarker was defined by taking the  
198 differences in concentration levels from the average of the biomarker in the reference  
199 group divided by the reference standard deviation. Essentially, the MDP score  
200 represents the difference, by number of standard deviations, from the healthy control  
201 group. The equation used to calculate MDP in the present study is shown below:

$$\text{Molecular degree of perturbation} = \frac{x_i - \bar{x}_{(reference)}}{\sigma_{(reference)}}$$
$$\sigma = \frac{\sum_{i=1}^n (x_i - \bar{x})^2}{n - 1}$$

202 n = Number of data points

203 xi = Each of the value of data

204  $\bar{x}$  = Mean of the data points

205  $\sigma$  = Standard deviation

206 In this study we applied the MDP scoring system using data on 21 biomarkers measured  
207 from three distinct groups of patients, with symptomatic vivax infection, asymptomatic  
208 vivax infection and uninfected endemic controls. The MDP was filtered by the absolute  
209 MDP scores below 2 modules and by the sum of all accumulated MDP deviations. To  
210 identify samples implicated in ‘perturbation’, all values above the cutoff of the average  
211 MDP score plus 2 standard deviations of the reference group were considered  
212 “perturbed”. In additional analyses, the median value of ssMDP in symptomatic patients  
213 was calculated (value=48.11), and individuals exhibiting values above this threshold  
214 (top 50% symptomatic participants) were considered highly perturbed.

## 215 **Statistical Analysis**

216 Descriptive statistics were performed to characterize the study population. Continuous  
217 variables were tested for Gaussian distribution using the D’Agostino-Pearson test. No  
218 variables exhibited normal distribution. The median values with interquartile ranges  
219 were used as measures of central tendency and dispersion, respectively. The Kruskal–  
220 Wallis test with the Dunn’s multiple-comparison were used to compare continuous  
221 variables whereas the Pearson’s chi-square test was used to compare variables displayed  
222 as percentages. Hierarchical cluster analyses (Ward’s method) of log10 transformed and  
223 z-score normalized data were employed to depict the overall expression profile of  
224 indicated biomarkers in the study subgroups. All comparisons were pre-specified and



225 two-tailed. Differences with p-values below 0.05 after Holm-Bonferroni's adjustment  
226 for multiple comparisons were considered statistically significant. Profiles of correlation  
227 between biochemical parameters were examined using network analysis of the  
228 Spearman correlation matrices. Correlations with p-value<0.05 were included in the  
229 network visualization. Spearman rank values ( $\rho$ ) were used to describe the strength of  
230 correlations between viral load from participants with current chronic infection and the  
231 MDP score of inflammatory parameters of these participants.

232 A Kaplan-Meier curve adaptation [33] was employed to test the probability of being  
233 highly perturbed according to the number of previous malaria episodes and age. A  
234 discriminant model using sparse canonical correlation analysis (CCA) was employed to  
235 assess whether inflammatory biomarkers, tissue damage biomarkers and inflammatory  
236 and tissue damage biomarkers could characterize the symptomatic participants. One  
237 polynomic (multinomial) logistic regression model was carried out using the variables  
238 with P-value <0.02 in the Mann-Whitney test between symptomatic and asymptomatic  
239 vivax participants, as showed in Table S1, to detect variables, epidemiologic or  
240 laboratorial, associated with symptomatic diseases.

241 Based on the mathematic formulas employed to visualize space-time deformity based  
242 on the general relativity theory proposed by Albert Einstein in 1915, we adapted the  
243 application of the proposed model to assess the overall impact of variables used here on  
244 homeostasis (defined as space-time membrane). In this model, homeostasis was defined  
245 by a plain p-brane which may be subjected to different degrees of deformities  
246 depending on the perturbation (distance from normal, which is calculated through the  
247 MDP scores) caused by each inflammatory marker, tissue damage markers and from the  
248 pathogen itself (parasitemia). The calculations and plots were build using the package  
249 *Shapes* from R.

250 The statistical analyses were performed using GraphPad Prism 8.0 (GraphPad Software,  
251 La Jolla, CA, USA), JMP 14.0 (SAS, Cary, NC, USA) and R statistical software.

## 252 **Results**

### 253 **Characteristics of Study Population**

254 Overall, study participants with symptomatic malaria were significantly younger when  
255 compared with those with asymptomatic *P. vivax* infection or uninfected controls  
256 (median age 29 [IQR 19-42]; 44 [IQR 34-50]; 39 [IQR 25-50] years, respectively,  
257  $P < 0.001$ ). No differences were noted in regard to sex distribution ( $P = 0.43$ ). Of note,  
258 individuals with asymptomatic malaria referred a higher number of previous malaria  
259 episodes (100%,  $P < 0.001$ ). Also, statistical discrepancies were found in the time living  
260 in the endemic area, with, on average, fewer years reported by symptomatic patients  
261 ( $P < 0.001$ ). Noteworthy, the vast majority of MDP values calculated with the biomarkers  
262 measured in the study exhibited significant differences among groups. Additional  
263 findings are detailed in the S1 Table. Using a multivariate analysis, based on a stepwise  
264 model (as described in Methods), we confirmed that aging, presenting with more than  
265 ten years living in endemic area and increased number of previous malaria episodes  
266 were protective factors against occurrence of symptoms during the current malaria  
267 episode in the adjusted model, whereas the increases in the global inflammatory  
268 disturbance, measured by ssMDP, was a factor independently associated with the  
269 symptomatic malaria (S1 Figure panel A).

### 270 **Patients with symptomatic vivax malaria exhibit a higher degree of systemic** 271 **inflammatory perturbation**

272 To assess potential differences in the inflammatory activation according to the presence  
273 or absence of symptoms in vivax infection, we employed the molecular degree of  
274 perturbation (MDP, as described in Methods) in each study subpopulation (Fig 1).  
275 Individuals presenting with symptomatic vivax malaria exhibited higher ssMDP score  
276 values than those with asymptomatic infection or the uninfected control groups (Figs  
277 1A and 1B). In addition, ssMDP values were also higher in asymptomatic malaria  
278 individuals than in those from the endemic control group (Fig 1B). These results  
279 reinforce the idea that the presence of *P. vivax* infection is associated with overall  
280 disturbances in the systemic inflammatory profile which degree is proportional to the  
281 clinical presentation.

282 **Figure 1:** Higher degree of inflammatory perturbation associated with symptomatic vivax malaria. (A)  
283 Histograms show the molecular degree of perturbation (MDP) score values relative to each study group,

284 as indicated. (B) Box plots represent the MDP score distribution between study groups, with median and  
285 interquartile range values. Data were compared between the clinical groups using the Kruskal–Wallis test,  
286 with Dunn’s multiple comparisons ad hoc test. (C) Left panel: Median MDP values for each indicated  
287 parameter were Log10 transformed and z-score normalized. A two-way hierarchical cluster analysis  
288 (Ward’s method) was employed to depict overall trends in changes of the MDP values among the clinical  
289 groups. Dendrograms represent the Euclidean distance. Right panel: Average fold-difference values of the  
290 MDP scores for each marker were calculated between clinical groups. Green bars represent statistically  
291 significant differences estimated by the Mann–Whitney U test. P-values were adjusted for multiple  
292 comparisons using the Holm-Bonferroni method. Abbreviations (alphabetic order): ALT: alanine  
293 aminotransferase; AST: aspartate aminotransferase; CCL: C-C motif chemokine ligand; CXCL: C-X-C  
294 motif chemokine ligand; CRP: C-reactive protein; IFN: interferon; IL: interleukin; TNF: tumor necrosis  
295 factor.

296 We next evaluated whether the degree of inflammatory perturbation calculated for each  
297 marker could provide more granularity about the disease endotypes’ details. The mean  
298 MDP score values of each marker of inflammation were analyzed by an unsupervised  
299 hierarchical cluster. Using this approach, we identified two main clusters of markers  
300 (Fig 1C). The markers forming the first cluster tended to increase the MDP values in the  
301 group of symptomatic malaria, with remarkable high values of TNF- $\alpha$ , IL-6, CXCL9,  
302 AST, CRP, IL-8 and ALT. The second cluster of markers was composed by IFN- $\gamma$ ,  
303 creatinine, IL-1 $\beta$ , direct and indirect bilirubin, CXCL10 and IL-10, with heightened  
304 MDP values being observed in both the group of individuals with either asymptomatic  
305 or symptomatic malaria. Patients with symptoms had the highest levels, except for IL-  
306 10, which was higher in the asymptomatic malaria group. An additional analysis using a  
307 binary multivariate logistic regression model revealed that increased perturbation scores  
308 of IL-6, IL-8 and CRP were independently associated with occurrence of symptomatic  
309 malaria, whereas higher degree of perturbation of IL-10 and fibrinogen were protective  
310 factors against symptoms in *P. vivax* infection (S1 Figure panel B). The visual  
311 differences detected in the heatmap of the MDP values were confirmed using fold-  
312 difference calculations between the study groups (Fig. 1C). Likewise, when comparing  
313 symptomatic with the uninfected control group, only perturbations of haptoglobin,  
314 creatinine and IL-1 $\beta$  were not significantly increased. The magnitude of differences in  
315 the MDP of the individual markers was found to be lower between the groups of  
316 individuals with asymptomatic malaria or uninfected controls. Alternatively, although  
317 the majority of markers with significant perturbances were noted in symptomatic  
318 patients, the comparison of malaria groups also identified augmented expression of  
319 MDP levels of IL-10 and indirect bilirubin in asymptomatic individuals. These findings  
320 confirm that susceptibility to *P. vivax* malaria’s susceptibility may be reflected by

321 disturbances in the concentrations of several markers involved in controlling systemic  
322 inflammation.

323

### 324 **Network analysis of inflammatory balance in *Plasmodium vivax* infection**

325 To more precisely characterize the nuances and dynamicity of the systemic  
326 inflammatory perturbation detected in the presence of *P. vivax* malaria, and which was  
327 more pronounced in those with symptomatic infection, we employed a network analysis  
328 of MDP values (Fig 2), as previously published by our group in a series of other  
329 pathological conditions [24–28].

330 **Figure 2:** Network analysis of the MDP score values in the study groups. Spearman correlation matrices  
331 of the MDP score values in each study group - (A) controls; (B), asymptomatic vivax malaria; (C)  
332 symptomatic vivax malaria - were built and Circos plots were used to illustrate the correlation networks.  
333 Only significant correlations ( $p < 0.05$  after adjustment for multiple comparisons) are shown. Each circle  
334 represents a different plasma parameter, and the size of each circle is proportional to the number of  
335 significant correlations. Lines represent the Spearman rank ( $\rho$ ) values. Red color infers positive  
336 correlation, whereas blue color denotes negative correlation. Node analysis heatmap shows the number of  
337 statistically significant correlations involving each marker per clinical group. Abbreviations (alphabetic  
338 order): ALT: alanine aminotransferase; AST: aspartate aminotransferase; CCL: C-C motif chemokine  
339 ligand; CXCL: C-X-C motif chemokine ligand; CRP: C-reactive protein; IFN: interferon; IL: interleukin;  
340 TNF: tumor necrosis factor.

341 Using MDP scores for each biomarker, as well as the overall MDP score (ssMDP), we  
342 found an important discrepancy in the network densities among the study groups. The  
343 group of symptomatic vivax participants exhibited the highest network density whereas  
344 asymptomatic infection displayed the lowest (Fig 2). Moreover, regardless of the  
345 clinical groups, most correlations were positive, meaning that increases in inflammatory  
346 perturbation of a given marker were frequently followed by increases in the disturbance  
347 levels of other inflammatory molecules (Fig 2). Curiously, the interferon pathway  
348 dominated the interactions (e.g., statistically significant correlations) in the control  
349 group, with CCL2, CXCL9, CCL5, CXCL10, IFN- $\gamma$  and IL-4 showing up as the top  
350 highly connected markers (Fig 2A). In the group of asymptomatic malaria participants,  
351 the Spearman correlation matrices revealed a unique negative correlation, between the  
352 MDP values of CXCL10 and IL-12p70. The most highly connected markers were CRP,  
353 CCL2, CCL5, CXCL10, IL-1 $\beta$  and IL-4 (Fig 2B). Importantly, in the group of  
354 symptomatic vivax, we found two clusters of correlations: the first composed mainly by  
355 interactions between the inflammatory markers and ALT and AST; and the second  
356 composed by tissue damage markers (Fig 2C). Next, to verify the individual

357 contribution to the global inflammatory perturbation, we employed a Spearman  
358 correlation between the ssMDP and the MDP level of each marker and found that the  
359 symptomatic group presented a higher number of significative markers associated with  
360 the global perturbation (S2 Figure). These observations argue that the appearance of  
361 symptoms in vivax malaria is associated with an intense disruption of the homeostasis,  
362 hallmarked by an increased overall degree of molecular perturbation as well as by a  
363 regulated process hallmarked by an intricate network of correlations of the individual  
364 markers.

### 365 **Time living in the endemic area influences the molecular degree of perturbation of** 366 **individuals infected with *Plasmodium vivax***

367 We have previously demonstrated that persons living in malaria endemic areas from the  
368 Brazilian Amazon for more than 10 years tend to exhibit increased odds of developing  
369 asymptomatic malaria once infected with *P. vivax* [29]. Such findings agree with other  
370 investigations on *P. falciparum* infection in other regions of the globe [30,31]. Here, to  
371 evaluate the impact of the time of residency in an endemic area on the molecular degree  
372 of inflammatory perturbation, we stratified the study participants in two groups: (i) one  
373 including those who lived less than ten years and (ii) a second group with persons who  
374 referred living more than ten years (Fig 3).

375 **Figure 3:** Patients with *Plasmodium vivax* malaria living longer in the endemic area display an attenuated  
376 systemic inflammatory disturbance. (A) Left panel: to build the heatmap, data were log-transformed and  
377 z-score normalized. A one-way hierarchical cluster analysis (Ward's method) was employed to show the  
378 profiles of the molecular degree of perturbation of participants according to time living in an endemic  
379 area (patients were ordered according to time living in an endemic area). Patients were divided in two  
380 groups based on time living in the area (those who have lived for less than 10 years or for more than 10  
381 years) and whether they presented with symptomatic or asymptomatic malaria. Right panel: Spearman  
382 rank test was used to assess correlations between the individual MDP score values of each parameter or  
383 parasitemia and time living in an endemic area (in years). Bars indicate the Spearman coefficient ( $\rho$ )  
384 values. Green bars to the right indicate positive whereas to the left denote negative correlations with  
385 adjusted P-values <0.05. Grey bars indicate non-significant correlations. (B) The Pearson's chi-square  
386 test was used to compare the frequency (percentage) of symptomatic and asymptomatic malaria  
387 participants according to the years living in an endemic area. (C) A violin plot was used to show the  
388 number of symptoms in the participants stratified according to years living in an endemic area. Data were  
389 compared using the Mann-Whitney U test. Abbreviations (alphabetic order): ALT: alanine  
390 aminotransferase; AST: aspartate aminotransferase; CCL: C-C motif chemokine ligand; CXCL: C-X-C  
391 motif chemokine ligand; CRP: C-reactive protein; IFN: interferon; IL: interleukin; TNF: tumor necrosis  
392 factor.

393 A hierarchical cluster analysis built upon a heatmap of z-score normalized MDP data on  
394 each individual marker and *P. vivax* parasitemia values failed to show a profile that  
395 could distinguish the individuals based on time living in the endemic area in both

396 groups of malaria patients (symptomatic and asymptomatic malaria) (Fig 3A, left  
397 panel). A second investigative approach used Spearman correlation analysis between  
398 the MDP or parasitemia and time living in the endemic area in the entire subpopulation  
399 of *P. vivax*-infected individuals. Interestingly, the MDP scores from most of the markers  
400 as well as the parasitemia values were all negatively correlated with time living in the  
401 endemic area. One exception was IL-10 MDP values, which were positively correlated  
402 with time living in the area (Fig 3A, right panel). Of note, the perturbation of the liver  
403 damage parameters ALT, AST, total bilirubin, and also MDP values of IL-4, IL-6, IL-8,  
404 IL-12p70, CXCL9, CCL5, CCL2, CRP, fibrinogen and parasitemia levels showed an  
405 inverse correlation with the time living in the endemic area. Moreover, an expressive  
406 greater number of individuals with asymptomatic malaria was found to live more than  
407 10 years in the area (Fig. 3B). Tolerance to malaria is tightly related to number of  
408 previous *Plasmodium* infections [20,32] and people living for an extended time in  
409 endemic regions may be a higher odds of experiencing a higher number of *P. vivax*  
410 infections. We then tested whether time living in the endemic area would reflect the  
411 number of *P. vivax* symptoms. As expected, individuals living for longer periods in the  
412 endemic areas showed a lower number of symptoms in the current malaria episode. (Fig  
413 3C).

#### 414 **Impact of repetitive malaria episodes in the past on the degree of inflammatory** 415 **perturbation in the current *Plasmodium vivax* infection**

416 We next directly tested the hypothesis that individuals highly exposed to *P. vivax* and  
417 who experienced several previous malaria episodes would gradually learn how to  
418 modulate the immune activation and control the inflammatory responses that result in  
419 immunopathology, reducing the odds of developing more severe clinical presentations  
420 during the current infection. Initially, using Spearman correlation analysis, we found a  
421 general tendency to detect a negative correlation between the number of previous vivax  
422 malaria episodes and the MDP values of nearly all the markers evaluated (Fig 4A).

423 **Figure 4:** Heightened number of previous malaria episodes mitigates the inflammatory imbalance in the  
424 current *Plasmodium vivax* infection. (A) Spearman correlation between the number of previous malaria  
425 episodes and the global degree of inflammatory perturbation (ssMDP) of each parameter's individual  
426 MDP values. Bars represent the Spearman rank coefficient value ( $\rho$ ). Colored bars (each clinical group  
427 is represented by a different color) infer correlations that presented adjusted P-value <0.05. (B) A scatter  
428 plot was employed to show the correlation between the number of previous malaria episodes and the  
429 ssMDP score values. (C) Probability of being highly perturbed (>2 standard deviations from control  
430 group) according to the number of previous malaria episodes in all participants (left panel) and  
431 participants grouped based on biological sex. The curves were compared using the Steger Method.

432 Abbreviations (alphabetic order): ALT: alanine aminotransferase; AST: aspartate aminotransferase; CCL:  
433 C-C motif chemokine ligand; CXCL: C-X-C motif chemokine ligand; CRP: C-reactive protein; IFN:  
434 interferon; IL: interleukin; TNF: tumor necrosis factor.

435 Applying this analysis to all participants with malaria, we observed that only MDP  
436 levels of IL-10 were directly associated with the number of previous malaria episodes  
437 (Fig 4A). An interesting finding was the negative correlation between the number of  
438 previous episodes and parasitemia in all the participants with vivax malaria,  
439 independent of the presentation of symptoms (Fig 4A). In participants with  
440 symptomatic malaria, only negative correlations were detected, highlighting the  
441 influence of previous infection episodes on reducing perturbation of tissue damage  
442 markers, such as direct and indirect bilirubin, creatinine, and fibrinogen. This  
443 observation reinforces the idea that having a history of several previous *Plasmodium*  
444 *vivax* infections is related to a relative control of tissue damage (Fig 4A). Extending the  
445 approach to asymptomatic participants, we detected a unique inverse correlation  
446 between the number of previous episodes and IL-12p70 MDP values. Additionally, we  
447 found that even in the uninfected control group, history of previous malaria episodes  
448 was associated with reduced perturbation of indirect bilirubin, total bilirubin, CCL2,  
449 CXCL10, IL-10 and IFN- $\gamma$  (Fig 4A). Importantly, when all malaria participants were  
450 analyzed, the global perturbation measured by ssMDP levels was lower proportionally  
451 relative to the number of previous malaria episodes (Figs 4A and 4B). Finally, a  
452 Kaplan-Meier survival curve demonstrated that increases in the number of previous  
453 malaria episodes resulted in a gradual lower probability of a study participant being  
454 considered highly perturbed (presenting with  $\geq \pm 2SD$  of the overall ssMDP score value,  
455 as described in Methods), independent of biological sex (Fig 4C). Noteworthy, our  
456 analysis revealed that previous exposure to *Plasmodium* infections indeed seems to  
457 attenuate the immune activation of the current episode, reflecting the lower odds of  
458 experienced an unfettered, unbalanced, inflammatory response.

#### 459 **Aging impacts the molecular degree of perturbation in *Plasmodium vivax* infection**

460 We have previously suggested that there is an effect of aging in the modulation of  
461 systemic inflammation in *P. vivax* infection [7]. Here, we tested whether such an effect  
462 may be explained by the impact of aging on the molecular degree of inflammatory  
463 perturbation. Hence, Spearman correlation analysis revealed that, in general, increasing

464 in age was associated with decreases in the MDP score values of the markers  
465 investigated in the study population (Fig 5).

466 **Figure 5:** Aging is associated with diminished systemic inflammatory disturbance in vivax malaria. (A)  
467 Spearman correlation between age and the global degree of inflammatory perturbation (ssMDP) of the  
468 individual MDP values for each parameter. Bars represent the Spearman rank coefficient value ( $\rho$ ).  
469 Colored bars (each clinical group is represented by a different color) infer correlations that presented  
470 adjusted P-value  $<0.05$ . (B) A scatter plot was employed to show the correlation between age and the  
471 ssMDP score values. (C) Probability of being highly perturbed ( $>2$  standard deviations from the control  
472 group) according to age in all participants (left panel) and in participants grouped based on biological sex.  
473 Abbreviations (alphabetic order): ALT: alanine aminotransferase; AST: aspartate aminotransferase; CCL:  
474 C-C motif chemokine ligand; CXCL: C-X-C motif chemokine ligand; CRP: C-reactive protein; IFN:  
475 interferon; IL: interleukin; TNF: tumor necrosis factor.

476 Considering only vivax participants, all the statistically significant correlations between  
477 aging and MDP score values were negative, meaning that increases in age were directly  
478 related to a reduction in the global inflammatory disturbance (ssMDP), in the individual  
479 degree of perturbation of fibrinogen, ALT, AST, TNF- $\alpha$ , IFN- $\gamma$ , haptoglobin and also  
480 parasitemia (Fig 5A). Importantly, in the group of symptomatic malaria, aging was  
481 significantly related to decreased haptoglobin MDP values only, whereas in the group of  
482 asymptomatic malaria, aging specifically reduced the fibrinogen MDP values but not of  
483 other markers (Fig 5A). In the endemic control group, we found that aging was  
484 associated with increases in MDP scores of IL-8 and IL-1 $\beta$  and decreased MDP values  
485 of total and direct bilirubin. We next evaluated the impact of aging in the global  
486 inflammatory perturbation in all of our study participants and found a negative  
487 correlation ( $r=0.011$ ;  $P=0.032$ ) (Fig 5B). Further, increases in age were shown to  
488 proportionally reduce the probability of an individual being highly perturbed regardless  
489 of the biological sex (Fig 5C), suggesting that aging mitigates the inflammatory  
490 imbalance in *P.vivax*-infected individuals. Finally, a hierarchical cluster analysis  
491 performed based on the age and number of malaria episodes could not distinguish  
492 groups when all participants were inputted. However, it reinforced our results exhibiting  
493 the influence of aging and previous infections over more controlled inflammatory  
494 responses (reduced MDP values) and lower frequency of symptomatic malaria cases (S3  
495 Figure).



496 **Effects of the inflammatory disturbance on the number of symptoms during**  
497 ***Plasmodium vivax* infection**

498 To dissect the clinical effects of the inflammatory imbalance during *P. vivax* infection,  
499 we used a color map analysis, ordinating the participants based on the number of  
500 symptoms, to describe the symptomatology distribution in our study population (Fig  
501 6A).

502 **Figure 6:** Impact of systemic inflammatory disturbance on the number of symptoms in *Plasmodium vivax*  
503 malaria. (A) Symptomatic *Plasmodium vivax* malaria patients were ordered according to the number of  
504 symptoms. A color map highlighting the detection of each symptom is shown. Parasitemia (log10) and  
505 age are shown as continuous variables on the bottom for each patient. (B) Spearman correlation between  
506 the number of symptoms and age (left panel) and Log10 parasitemia (right panel). Linear curves with  
507 95% confidence intervals were used to illustrate trends in data variation. (C) Patients were stratified into  
508 three groups based on the presence of symptoms: Asymptomatic, Oligosymptomatic ( $\leq 5$  symptoms) or  
509 Polysymptomatic ( $> 5$  symptoms). Left panel: Median MDP values for each indicated parameter were  
510 Log10 transformed and z-score normalized. A one-way hierarchical cluster analysis (Ward's method) was  
511 employed to depict overall trends in changes of the MDP values among the clinical groups. Dendrograms  
512 represent the Euclidean distance. Right panel: Spearman correlation between the number of symptoms  
513 and the MDP score values for each indicated parameter. Green bars indicate statistically significant  
514 correlations (all positive after adjusted P-value  $< 0.05$ ). Grey bars denote a non-significant correlation.  
515 (D) Violin plot shows the distribution of the global degree of perturbation (ssMDP) in each subgroup of  
516 *Plasmodium vivax* patients. Data were compared using the Kruskal-Wallis test with a non-parametric  
517 linear trend posttest.

518 As expected, fever was the main symptom documented in *P. vivax*-infected participants,  
519 which was identified in all patients, followed by chills, sweating, headache, myalgia,  
520 arthralgia and nausea. We next employed Spearman correlation analyses and found a  
521 curious negative correlation between the number of symptoms and both age and  
522 parasitemia ( $r = -0.34$ ,  $P < 0.001$ ;  $r = -0.24$ ,  $P = 0.004$ , respectively) (Fig 6B). Next, we  
523 divided our participants according to the number of symptoms, in asymptomatic (no  
524 symptoms), oligosymptomatic (less than six symptoms) and polysymptomatic (those  
525 who presented six or more symptoms) and employed a hierarchical cluster and a  
526 Spearman correlation analysis to investigate the potential effect of the inflammatory  
527 activation (measured through MDP score values of the markers) on symptomatology in  
528 *P. vivax* infection (Fig 6C). A clear distinction in the MDP profiles of the markers was  
529 observed in the unsupervised hierarchical cluster between asymptomatic,  
530 oligosymptomatic and polysymptomatic groups (Fig. 6C). Overall, the group of  
531 polysymptomatic individuals exhibited relatively heightened inflammatory perturbation  
532 values, distinguished from the other groups by expression of almost all markers when  
533 compared with asymptomatic participants. Precisely, increased IFN- $\gamma$ , IL-1 $\beta$ , creatinine,  
534 direct and indirect bilirubin MDP scores in comparison with the oligosymptomatic

535 group (Fig 6C). Asymptomatic participants, on the other hand, showed a tendency to  
536 express higher MDP values of IL-10 and CXCL10, which were clearly lower than the  
537 oligo and polysymptomatic groups (Fig 6C). Furthermore, Spearman correlation  
538 analyses were performed to investigate the association between the number of  
539 symptoms and the degree of inflammatory perturbation of the markers indicated. This  
540 approach revealed that the number of symptoms was associated mainly with increases  
541 in the degree of perturbation of tissue damage markers, such as AST, ALT, total and  
542 indirect bilirubin, fibrinogen and creatinine (Fig 6C). Additionally, we found that the  
543 global molecular perturbation measured by ssMDP values exhibited a gradual tendency  
544 to increase in the participants according to the augmented number of symptoms (Fig  
545 6D). Our findings argue that the degree of inflammatory disturbance in peripheral blood  
546 of *P. vivax* malaria patients is directly related to the clinical presentation severity.

#### 547 **Perturbation in concentrations of tissue damage markers, rather than of immune** 548 **activation molecules characterizes symptomatic *Plasmodium vivax* malaria**

549 Among the biomarkers investigated in the present study, there were mostly two classes  
550 of molecules: (i) those that more closely infer inflammatory activity and (ii) those  
551 intrinsically related to tissue damage/injury (Fig 7A).

552 **Figure 7:** Using canonical correlation analysis of the degree of perturbation of inflammatory or tissue  
553 damage markers to characterize vivax malaria. (A) In an exploratory approach, a sparse canonical  
554 correlation analysis (sCCA) was used to test whether the indicated clinical groups could be distinguished  
555 based on: (B) the overall perturbation profile of all the markers measured, or combinations of (C) tissue  
556 damage markers or (D) inflammatory markers only. Lower panels show the canonical coefficient scores  
557 calculated to identify the biomarkers responsible for the distinctions between groups in each sCCA model  
558 as indicated. Abbreviations (alphabetic order): ALT: alanine aminotransferase; AST: aspartate  
559 aminotransferase; CCL: C-C motif chemokine ligand; CXCL: C-X-C motif chemokine ligand; CRP: C-  
560 reactive protein; IFN: interferon; IL: interleukin; TNF: tumor necrosis factor.

561 To more precisely define which class of markers is more relevant to explain the  
562 occurrence of symptoms in individuals infected with *P. vivax*, we used a discriminant  
563 algorithm based on sparse canonical correlation analysis (sCCA). We performed three  
564 models (i) one with all the markers (Fig 7B), (ii) a second model with only the tissue  
565 damage markers (Fig 7C) and (iii) a final model including only inflammation-related  
566 markers (Fig 7D). In all three models, discrimination of symptomatic participants from  
567 asymptomatic and endemic controls was detected with a high degree of accuracy (Fig  
568 7B-D). As expected, differentiation between asymptomatic malaria and uninfected  
569 controls was difficult, with many misclassifications seen in the models. We next

570 assessed the canonical coefficients of each model, which is a statistical strategy to rank  
571 the markers that most contributed to the discriminant model. This approach found that  
572 AST and ALT were the top markers associated with symptomatic participants (Fig 7B).  
573 In the second model, canonical coefficient values of tissue damage markers, ALT and  
574 AST also emerged as the top markers that could identify individuals with symptomatic  
575 malaria, whereas direct bilirubin and haptoglobin the top damage markers associated  
576 with the distinction between asymptomatic malaria and uninfected controls (Fig 7C).  
577 Finally, we used only the inflammatory markers (Fig 7D) and observed a relevant  
578 decrease in the discrimination power, with 38 misclassifications in the group of  
579 symptomatic malaria. Using information from the canonical coefficients, we found that  
580 the IFN pathway showed a relevant role in the discrimination of symptomatic malaria  
581 and controls, with CCL2 followed by CXCL10 and CXCL9 as the top markers. CXCL9  
582 and IL-4 were the top markers when we analyzed asymptomatic malaria vs. controls,  
583 whereas IL-6 and CXCL10 were highlighted when symptomatic vs. asymptomatic  
584 malaria patients were compared (Fig 7D). In the context of *P. vivax* malaria, these  
585 observations reinforce the idea that alterations in circulating concentrations of tissue  
586 damage-associated markers more intrinsically relate with the appearance of symptoms  
587 than the imbalance of the immune activation alone.

### 588 **Characterizing disease tolerance in *Plasmodium vivax* malaria**

589 We further tested whether disease tolerance could be observed and characterized in the  
590 study participants infected with *P. vivax*. To do so, we examined the systemic  
591 inflammation assessed through the ssMDP values in the context of *P. vivax* parasitemia  
592 and the number of symptoms. First, we employed a hierarchical cluster with z-score  
593 normalized values to depict the overall distribution of these three selected parameters in  
594 the group of patients with symptomatic malaria. Interestingly, the combination of the  
595 ssMDP, number of symptoms, and *P. vivax* parasitemia was not able to completely  
596 segregate patients with severe malaria from those with non-severe malaria (See  
597 definitions used to classify patients based on malaria severity in Methods) (Fig 8A).

598 **Figure 8:** Characterizing disease tolerance in *Plasmodium vivax* malaria. (A) Left panel: A two-way  
599 hierarchical cluster analysis was employed to characterize the overall profiles of parasitemia, systemic  
600 inflammatory disturbance (ssMDP) and the number of symptoms in *Plasmodium vivax* patients  
601 presenting with either severe (n=28) or non-severe disease (n=106). Right panel: A Chi-Square test was  
602 used to test the proportion of severe vivax patients in each cluster identified. (B) A principal component  
603 (PCA) model (left panel) with a vector plot (right panel) was used to demonstrate the influence of each  
604 indicated parameter on the distribution of the data. Colors indicate the clusters identified in panel (A). (C)

605 Patients were segregated according to malaria severity and a Spearman correlation analysis was  
606 performed to identify the association between parasitemia and number of symptoms (N° of symptoms).  
607 (D) A space-time deformity model based on the relativity theory of gravity was employed to visualize the  
608 impact of each plasma marker and tissue damage marker on disturbance of the homeostasis (defined as  
609 space-time brane in the control group). See Methods for details on the mathematical model. Each dot  
610 represents a marker, and groups of patients were separated based on the cluster analyses shown in (A).

611 Moreover, the clustering analysis revealed four main clusters of study participants. The  
612 first cluster was composed predominantly by patients with non-severe malaria. Such  
613 cluster was characterized by the highest parasitemia and variable ssMDP values, with a  
614 low number of symptoms (Fig 8A). The second cluster was also composed mainly by  
615 non-severe malaria participants and exhibited a relatively low value for all three  
616 parameters evaluated (Fig 8A). The third cluster displayed a slight increase in the  
617 frequency of participants with severe malaria and was marked by augmented levels of  
618 global molecular perturbation, despite lower parasitemia values and the number of  
619 symptoms (Fig 8A). Finally, the fourth cluster was constituted by a majority of  
620 participants with severe malaria. This latter cluster exhibited more commonly a higher  
621 number of symptoms despite the relative lower ssMDP values and parasitemia levels  
622 (Fig 8A). These results suggest that the fourth cluster of study participants included less  
623 tolerant to *P. vivax* malaria patients. A principal component analysis (PCA), using the  
624 same parameters inputted in the hierarchical clustering, validated the idea that the  
625 number of symptoms, systemic inflammation assessed by ssMDP, and parasitemia were  
626 all independently influencing the distribution of the participants with symptomatic  
627 malaria into different subgroups of individuals. The PCA groups were similar to the  
628 clusters identified in the clustering analysis (Fig. 8B). Importantly, correlation analyses  
629 revealed an inverse linear association between parasitemia and the number of symptoms  
630 in individuals with non-severe malaria but not in those with severe malaria (Fig 8C).  
631 We next employed statistics previously used to assess space-time deformity by gravity  
632 following the general relativity theory (as described in Methods) to visualize the impact  
633 of each inflammatory and tissue damage marker on homeostasis disturbance. The  
634 disturbance is defined here by comparison to the space-time brane calculated for the  
635 uninfected endemic control group. Using this approach, the degree of deformity in the  
636 space-time brane infers the degree of homeostatic disturbance. The analyses  
637 demonstrated that the fourth cluster of malaria, mainly composed of severe malaria  
638 patients, exhibited the highest homeostatic disturbance (Fig 8D). As shown in Fig 8D,  
639 there was a progressive disturbance of the homeostasis through clusters 1 to 4, revealing

640 a remarkable tolerance pattern, in which patients from the first cluster exhibited more  
641 robust tolerance to the disease.

### 642 **Identifying the Determinants of Disease Tolerance in *P. vivax* Infection**

643 Spearman correlation matrices between the MDP values of the inflammatory or tissue  
644 damage markers and the number of symptoms and parasitemia values were employed to  
645 dissect the factors that could directly or indirectly influence tolerance in vivax malaria  
646 patients (Fig 9).

647 **Figure 9:** Identifying the factors associated with disease tolerance in *Plasmodium vivax* malaria. A  
648 Spearman correlation rank matrix analysis was used to identify the specific inflammatory or tissue  
649 damage markers which degree of disturbance is associated with parasitemia or number of symptoms (the  
650 latter are represented as central spheres in the network graphs) in patients non-severe or severe *P. vivax* as  
651 indicated. Each line represents a statistically significant correlation ( $p < 0.05$ ) after adjustment for multiple  
652 measurements. Among the statistically significant correlations detected, only positive associations were  
653 found.

654 In participants with non-severe vivax malaria, our analysis revealed that only MDP  
655 levels of IL-1 $\beta$  and IL-4 were positively correlated with parasitemia. MDP levels of  
656 IFN- $\gamma$ , IL-4, IL-6, CXCL10, CCL5, and liver parameters ASL and ALT showed to be  
657 positively correlated with the number of symptoms (Fig 9). Extending our approach to  
658 participants with severe malaria, we found that MDP levels of IL-10, IL-12p70, AST,  
659 ALT, and indirect bilirubin were directly associated with parasitemia (Fig 9).  
660 Importantly, the number of symptoms in those presenting severe vivax infection was  
661 associated with increases of several MDP levels of both inflammatory and tissue  
662 damage markers.

## 663 Discussion

664 Knowledge about disease tolerance in humans remains poorly elucidated, in part due to  
665 the difficulty of establishing a reliable measure of systemic inflammation. Here, to fill  
666 this gap, we used the molecular degree of perturbation (MDP) approach, a statistical  
667 tool that led us to infer the global inflammatory status, and which has been recently  
668 proposed by our group to help to understand the pathophysiology of a range of  
669 infectious and non-infectious diseases [24–27,33,34]. We evaluated the effects of  
670 several epidemiological characteristics in inflammatory responses to *P. vivax*, dissecting  
671 the disease tolerance to vivax malaria and identifying the molecular factors associated  
672 with the phenomenon.

673 Using the MDP, we found that regardless of the symptomatology, *P. vivax* infected  
674 participants exhibited a higher degree of inflammatory perturbation than the control  
675 groups. Importantly, symptomatic patients displayed the highest global MDP scores. In  
676 fact, we have previously reported that the clinical manifestation in *P. vivax* infection  
677 was strongly associated with an inflammatory imbalance in peripheral blood [35]. Here,  
678 we also identified a non-surprising pattern of inflammatory imbalance present in all the  
679 infected participants. Such a pattern comprises a higher degree of perturbation of  
680 CXCL9, CXCL10, IL-8, IL-10, IFN- $\gamma$ , AST, ALT, CRP, Fibrinogen, direct and indirect  
681 bilirubin concentrations. Moreover, only infected symptomatic patients had TNF- $\alpha$ ,  
682 total bilirubin, and IL-6 increased perturbation. These biomarkers have been extensive  
683 explored in the context of malaria pathophysiology. IFN- $\gamma$  and CRP have been recently  
684 identified as an inflammatory signature associated with a higher risk of mortality in *P.*  
685 *vivax* infection[6]. Polymorphisms in TNF- $\alpha$  and IL-6 genes [36], as well higher levels  
686 of these markers and of CXCL10 [37] were linked to malaria clinical outcomes and pro-  
687 inflammatory activation in response to *P. vivax* [38]. IL-10 has a fundamental role in  
688 response to *Plasmodium* infections, directly affecting dampening the inflammation-  
689 driven cytokine storm, modulating the immune response, and limiting the tissue  
690 damage, reducing odds of severe malaria [39–41]. Using the MDP assessment in  
691 malaria patients led us to define the nuances of the inflammatory imbalance associated  
692 with *P.vivax* infection.

693 Conceptually, inflammation is a dynamic process aimed at reestablishing tissue  
694 homeostasis. In some infectious diseases, such as malaria, the balance between immune

695 activation, regulatory cytokine responses and degree of tissue damage is a critical  
696 determinant of disease outcomes [42–44]. We explored the dynamicity of the *P.vivax*  
697 infection using the Spearman correlation matrices [24,25,39,45], and found a higher  
698 density of correlations among the participants with symptomatic malaria, with  
699 predominance of positive correlation among the degree of perturbation of the  
700 biomarkers. Despite that, in participants with symptomatic malaria, the degree of CCL2  
701 perturbation exhibited two negative correlations, vs. IL-6 and TNF- $\alpha$ . Moreover, ALT  
702 was the top node in the matrix calculated for symptomatic malaria, highlighting the  
703 relevance of liver inflammatory reaction in *P.vivax* infection [46,47]. Importantly,  
704 different from our previous publication using absolute concentration values of  
705 inflammatory markers, where we had identified a highest number of correlations in  
706 matrices from asymptomatic patients [39], here, by imputing MDP values instead, we  
707 found that this group of participants exhibit the lowest network density, suggesting that  
708 the absence of symptoms in response to *P. vivax* is associated with a potential  
709 uncoupling of the perturbed inflammatory response, probably due to lack of immune  
710 activation in peripheral blood. A curious finding was the relative dissociation between  
711 tissue inflammatory damage markers and immune factors. This dissociation argues that,  
712 except for the liver, the symptoms caused by *P.vivax* are strongly associated with the  
713 cytokine storm in response to infection and may be also linked to local tissue reaction,  
714 assessed by measuring levels of liver transaminases for example, but without direct  
715 interaction between these MDP levels. This dissociation can be a consequence of the  
716 immune evasion mechanisms presented by the parasite, which alter the red blood cell  
717 (RBC) structure through expression and export of molecules encoded by plasmodium  
718 genome [48]. The interaction between the changed RBC and the host immune cells  
719 hinders the plasmodium recognition and enables the tissue damage directly mediated by  
720 the pathogen.

721 Epidemiological aspects have largely been described to influence clinical presentation  
722 and outcomes in malaria [7,30,31,48]. Many these effects are also related to the profile  
723 of the immune response. In continuous exposure to *P.vivax*, reflected throughout time  
724 living in endemic area and age, the host develops clinical immunity against  
725 *Plasmodium*. Still, a controlled inflammatory activation can limit the parasite burden [7]  
726 without major perturbations in homeostasis, dampening symptomatology. Here, we  
727 showed that repetitive *P. vivax* infection in the past gradually mitigates the

728 inflammatory activation in later infection episodes. The indications of this phenomenon  
729 are several. First, we found a robust negative correlation between the time living in an  
730 endemic area and the MDP values for all markers measured, except for IL-10 MDP  
731 levels. Our results also revealed a higher incidence of symptomatic individuals and  
732 fewer symptoms among those who reported living less than ten years in the endemic  
733 region. Next, we showed negative correlations between the number of previous malaria  
734 episodes and the inflammatory imbalance detected during the current infection, except  
735 for, again, IL-10 MDP levels. It is important to note that we found a tendency to  
736 decrease systemic inflammation and a lower probability of being highly perturbed in  
737 individuals with a greater number of previous malaria episodes.

738 Regarding age, we found that aging is associated with less intense inflammatory  
739 activation. Reinforcing the role of hyper-inflammatory status in symptomatology, we  
740 demonstrated that the number of symptoms was positively associated with increased  
741 MDP levels. Precisely, levels of tissue damage markers, such as AST, ALT, bilirubin,  
742 fibrinogen, and creatinine, and the pro-inflammatory markers IL-6 and IFN-  
743  $\gamma$ . Additionally, the ‘global’ systemic inflammation, measured by ssMDP levels, was  
744 higher in polysymptomatic participants. Our observations reported here suggest that  
745 older individuals who lived for long time in malaria-endemic area and had been exposed  
746 to several Plasmodium infections in the past tend to tolerate the current *P. vivax*  
747 infection through a decrease in perturbation of all pro-inflammatory and tissue damage  
748 markers, and increase in MDP levels of IL-10, which may limit tissue damage and  
749 minimize sickness [39–41].

750 Finally, our study tried to dissect the determinants of disease tolerance to *P. vivax*  
751 infection. Using data on parasitemia, ssMDP values, and the number of symptoms, we  
752 were able to evaluate the interplay between the main factors associated with unfavorable  
753 outcomes in an infectious disease: (i) pathogen load; (ii) host response to infection and  
754 (iii) clinical consequences of this interaction. Our analysis reveals that the main factor  
755 associated with severe cases in *P. vivax* infection was the number of symptoms,  
756 demonstrating a robust effect on homeostasis disruption. Of note, these participants  
757 exhibited relatively lower parasitemia and ssMDP values, arguing that some persons  
758 present severe vivax cases regardless of pathogen burden and inflammatory activation,  
759 being little tolerant to infection. In converse, we identified a subgroup of individuals  
760 who presented with higher parasitemia and augmented ssMDP values but lower



761 symptomatology and number of severe malaria cases. This latter group of individuals  
762 may be activating the immune response to counteract the parasite load, but without  
763 resulting in substantial tissue damage and symptomatology. We also found another  
764 group of *P. vivax*-infected study participants who seemed to have controlled infection  
765 without inducing substantial inflammatory disturbance, and presented with low  
766 parasitemia, lower ssMDP values and few symptoms. Importantly, we found that  
767 persons with severe vivax malaria lost the effective control of parasitemia resulting in  
768 tissue damage and symptoms, exemplified here by absence of a statistically significant  
769 correlation between parasitemia and number of symptoms.

770 Our final results disclosed the determinants of diseases tolerance in *P. vivax* infection.  
771 To do that, we employed networks inputting correlations between degree of molecular  
772 perturbation of tissue damage or inflammatory markers with parasitemia and number of  
773 symptoms. We described that higher parasitemia in severe vivax malaria was associated  
774 with a more robust tissue response, and that the degree of symptomatology was directly  
775 related to degree of perturbation in cytokine concentrations. Such scenario may  
776 significantly contribute to tissue damage through systemic inflammatory activation and  
777 also tissue inflammation, reinforcing our previous results reported above. Nevertheless,  
778 in non-severe cases, parasitemia was not associated with MDP of tissue damage  
779 markers and the number of symptoms were more linked to systemic inflammatory  
780 activation. This latter result reinforces the hypothesis that some patients manage to  
781 contain *P. vivax* infection in a balanced fashion, despite presenting some symptoms but  
782 without substantial tissue damage. This ‘tolerant state’ may be associated with  
783 epidemiological factors such as those reported here, confirming previously reported  
784 results [7].

785 Our study has some limitations. We did not have inflammatory measurements after the  
786 malaria therapy, limiting our insights about the systemic inflammation and immune  
787 restoration in our participants. Additionally, all our study participants were recruited in  
788 Brazil, and additional studies in multiple sites are needed to confirm our findings.  
789 Despite these limitations, our study adds to the current knowledge in the field by  
790 demonstrating the occurrence of disease tolerance in *P. vivax* malaria and by identifying  
791 the major determinants of this phenomenon.

792

793 **Acknowledgments**

794 The authors would like to thank Dr Luiz Marcelo Camargo (University of São Paulo)  
795 for technical support in field study area; Dr Jorge Clarencio and Dr Daniela Andrade  
796 (FIOCRUZ) for technical help with the immunoassays, and Mr Jorge Tolentino, Ms  
797 Natali Alexandrino, Mrs Elze Leite, and Mrs Andrezza Kariny for logistic support.

798 **Funding**

799 This work was supported by Financiadora de Estudos e Projetos (FINEP) (grant ward  
800 number: 010409605) / Fundo Nacional de Desenvolvimento Científico e Tecnológico  
801 (FNDCTCT- Amazônia), Brazil. This study was also financed in part by Coordenação  
802 de Aperfeiçoamento de Pessoal de Nível Superior (CAPES) (Finance Code 001), Brazil.  
803 B.B.A. was supported by a grant from the National Institutes of Health (NIH  
804 U01AI115940). The work of K.F.F. was supported by CAPES. C.L.V received a  
805 fellowship from Conselho Nacional de Desenvolvimento Científico e Tecnológico  
806 (CNPq). T.A.C. is a scientific initiation fellow from Fundação de Amparo à Pesquisa do  
807 Estado da Bahia (FAPESB). M.B.A. received a fellowship from the FAPESB. BBA,  
808 MBN and MVGL are investigators from CNPq (senior fellowship). The funders had no  
809 role in study design, data collection and analysis, decision to publish, or preparation of  
810 the manuscript.

811 **Competing interests**

812 The authors have declared that no competing interests exist

## 813 **References**

- 814 1. WHO Global. World malaria report 2019. WHO Regional Office for Africa.  
815 2019. Available: <https://www.who.int/news-room/fact-sheets/detail/malaria>
- 816 2. da Silva J Jr. National System in Health Surveillance: situation report: Rondônia.  
817 Brasília Ministério da Saúde. 2007.
- 818 3. Gomes AP, Vitorino RR, Costa A de P, Mendonça EG de, Oliveira MG de A,  
819 Siqueira-Batista R. Severe Plasmodium falciparum malaria. Rev Bras Ter  
820 intensiva. 2011;23: 358–69. doi:10.1590/s0103-507x2011000300015
- 821 4. Costa FT, Lopes SC, Ferrer M, Leite JA, Martin-Jaular L, Bernabeu M, et al. On  
822 cytoadhesion of Plasmodium vivax: raison d'être? Mem Inst Oswaldo Cruz.  
823 2011;106: 79–84. doi:10.1590/S0074-02762011000900010
- 824 5. Val F, Machado K, Barbosa L, Salinas JL, Siqueira AM, Costa Alecrim MG, et  
825 al. Respiratory Complications of Plasmodium vivax Malaria: Systematic Review  
826 and Meta-Analysis. Am J Trop Med Hyg. 2017;97: 733–743.  
827 doi:10.4269/ajtmh.17-0131
- 828 6. Cruz LAB, Barral-Netto M, Andrade BB. Distinct inflammatory profile underlies  
829 pathological increases in creatinine levels associated with Plasmodium vivax  
830 malaria clinical severity. PLoS Negl Trop Dis. 2018;12: e0006306.  
831 doi:10.1371/journal.pntd.0006306
- 832 7. Andrade BB, Barral-Netto M. Biomarkers for susceptibility to infection and  
833 disease severity in human malaria. Mem Inst Oswaldo Cruz. 2011;106 Suppl:  
834 70–8. doi:10.1590/s0074-02762011000900009
- 835 8. Laishram DD, Sutton PL, Nanda N, Sharma VL, Sobti RC, Carlton JM, et al. The  
836 complexities of malaria disease manifestations with a focus on asymptomatic  
837 malaria. Malar J. 2012;11: 29. doi:10.1186/1475-2875-11-29
- 838 9. de Mendonça VR, Barral-Netto M. Immunoregulation in human malaria: The  
839 challenge of understanding asymptomatic infection. Mem Inst Oswaldo Cruz.  
840 2015;110: 945–955. doi:10.1590/0074-02760150241
- 841 10. Shanks GD. Perspective piece tolerance may be more appropriate than immunity  
842 when describing chronic malaria infections. Am J Trop Med Hyg. 2019;100:  
843 497–500. doi:10.4269/ajtmh.18-0906
- 844 11. Schneider DS, Ayres JS. Two ways to survive infection: what resistance and  
845 tolerance can teach us about treating infectious diseases. Nat Rev Immunol.  
846 2008;8: 889–895. doi:10.1038/nri2432
- 847 12. Sorci G, Faivre B. Inflammation and oxidative stress in vertebrate host-parasite  
848 systems. Philos Trans R Soc Lond B Biol Sci. 2009;364: 71–83.  
849 doi:10.1098/rstb.2008.0151
- 850 13. Medzhitov R, Schneider DS, Soares MP. Disease Tolerance as a Defense  
851 Strategy. Science (80- ). 2012;335: 936–941. doi:10.1126/science.1214935

- 852 14. Ayres JS, Schneider DS. Tolerance of Infections. *Annu Rev Immunol.* 2012;30:  
853 271–294. doi:10.1146/annurev-immunol-020711-075030
- 854 15. Gozzelino R, Andrade BB, Larsen R, Luz NF, Vanoaica L, Seixas E, et al.  
855 Metabolic adaptation to tissue iron overload confers tolerance to malaria. *Cell*  
856 *Host Microbe.* 2012;12: 693–704. doi:10.1016/j.chom.2012.10.011
- 857 16. Reyburn H. Association of Transmission Intensity and Age With Clinical  
858 Manifestations and Case Fatality of Severe *Plasmodium falciparum* Malaria.  
859 *JAMA.* 2005;293: 1461. doi:10.1001/jama.293.12.1461
- 860 17. Snow RW, Guerra CA, Noor AM, Myint HY, Hay SI. The global distribution of  
861 clinical episodes of *Plasmodium falciparum* malaria. *Nature.* 2005;434: 214–217.  
862 doi:10.1038/nature03342
- 863 18. Gonçalves BP, Huang C-Y, Morrison R, Holte S, Kabyemela E, Prevots DR, et  
864 al. Parasite Burden and Severity of Malaria in Tanzanian Children. *N Engl J*  
865 *Med.* 2014;370: 1799–1808. doi:10.1056/NEJMoa1303944
- 866 19. Vallejo AF, Read RC, Arevalo-Herrera M, Herrera S, Elliott T, Polak ME.  
867 Malaria systems immunology: *Plasmodium vivax* induces tolerance during  
868 primary infection through dysregulation of neutrophils and dendritic cells. *J*  
869 *Infect.* 2018;77: 440–447. doi:10.1016/j.jinf.2018.09.005
- 870 20. Ademolue TW, Aniweh Y, Kusi KA, Awandare GA. Patterns of inflammatory  
871 responses and parasite tolerance vary with malaria transmission intensity. *Malar*  
872 *J.* 2017;16: 1–13. doi:10.1186/s12936-017-1796-x
- 873 21. Ramos S, Carlos AR, Sundaram B, Jeney V, Ribeiro A, Gozzelino R, et al. Renal  
874 control of disease tolerance to malaria. *Proc Natl Acad Sci U S A.* 2019;116:  
875 5681–5686. doi:10.1073/pnas.1822024116
- 876 22. Wang A, Huen SC, Luan HH, Baker K, Rinder H, Booth CJ, et al. Glucose  
877 metabolism mediates disease tolerance in cerebral malaria. *Proc Natl Acad Sci U*  
878 *S A.* 2018;115: 11042–11047. doi:10.1073/pnas.1806376115
- 879 23. Vandermosten L, Pham TT, Knoops S, De Geest C, Lays N, Van der Molen K, et  
880 al. Adrenal hormones mediate disease tolerance in malaria. *Nat Commun.*  
881 2018;9. doi:10.1038/s41467-018-06986-5
- 882 24. Vinhaes CL, Arriaga MB, de Almeida BL, Oliveira J V, Santos CS, Calcagno JI,  
883 et al. Newborns With Zika Virus-Associated Microcephaly Exhibit Marked  
884 Systemic Inflammatory Imbalance. *J Infect Dis.* 2020;222: 670–680.  
885 doi:10.1093/infdis/jiaa197
- 886 25. Vinhaes CL, Cruz LAB, Menezes RC, Carmo TA, Arriaga MB, Queiroz ATL, et  
887 al. Chronic Hepatitis B Infection Is Associated with Increased Molecular Degree  
888 of Inflammatory Perturbation in Peripheral Blood. *Viruses.* 2020;12.  
889 doi:10.3390/v12080864
- 890 26. Oliveira-de-Souza D, Vinhaes CL, Arriaga MB, Kumar NP, Cubillos-Angulo  
891 JM, Shi R, et al. Molecular degree of perturbation of plasma inflammatory

- 892 markers associated with tuberculosis reveals distinct disease profiles between  
893 Indian and Chinese populations. *Sci Rep.* 2019;9: 8002. doi:10.1038/s41598-019-  
894 44513-8
- 895 27. Vinhaes CL, Oliveira-de-Souza D, Silveira-Mattos PS, Nogueira B, Shi R, Wei  
896 W, et al. Changes in inflammatory protein and lipid mediator profiles persist after  
897 antitubercular treatment of pulmonary and extrapulmonary tuberculosis: A  
898 prospective cohort study. *Cytokine.* 2019;123: 154759.  
899 doi:10.1016/j.cyto.2019.154759
- 900 28. Vinhaes CL, Teixeira RS, Monteiro-Júnior JAS, Tibúrcio R, Cubillos-Angulo  
901 JM, Arriaga MB, et al. Hydroxyurea treatment is associated with reduced degree  
902 of oxidative perturbation in children and adolescents with sickle cell anemia. *Sci*  
903 *Rep.* 2020;10: 18982. doi:10.1038/s41598-020-76075-5
- 904 29. Andrade BB, Santos CJN, Camargo LM, Souza-Neto SM, Reis-Filho A,  
905 Clarêncio J, et al. Hepatitis B infection is associated with asymptomatic malaria  
906 in the Brazilian Amazon. *PLoS One.* 2011;6: e19841.  
907 doi:10.1371/journal.pone.0019841
- 908 30. Baird JK. Age-dependent characteristics of protection v. susceptibility to  
909 *Plasmodium falciparum*. *Ann Trop Med Parasitol.* 1998;92: 367–90.  
910 doi:10.1080/00034989859366
- 911 31. Baird JK, Jones TR, Danudirgo EW, Annis BA, Bangs MJ, Basri H, et al. Age-  
912 dependent acquired protection against *Plasmodium falciparum* in people having  
913 two years exposure to hyperendemic malaria. *Am J Trop Med Hyg.* 1991;45: 65–  
914 76. doi:10.4269/ajtmh.1991.45.65
- 915 32. Galatas B, Bassat Q, Mayor A. Malaria Parasites in the Asymptomatic: Looking  
916 for the Hay in the Haystack. *Trends Parasitol.* 2016;32: 296–308.  
917 doi:10.1016/j.pt.2015.11.015
- 918 33. Oliveira-de-Souza D, Vinhaes CL, Arriaga MB, Kumar NP, Queiroz ATL,  
919 Fukutani KF, et al. Aging increases the systemic molecular degree of  
920 inflammatory perturbation in patients with tuberculosis. *Sci Rep.* 2020;10:  
921 11358. doi:10.1038/s41598-020-68255-0
- 922 34. Barretto JR, Boa-Sorte N, Vinhaes CL, Malta-Santos H, Rebouças-Silva J,  
923 Ramos CF, et al. Heightened Plasma Levels of Transforming Growth Factor Beta  
924 (TGF- $\beta$ ) and Increased Degree of Systemic Biochemical Perturbation  
925 Characterizes Hepatic Steatosis in Overweight Pediatric Patients: A Cross-  
926 Sectional Study. *Nutrients.* 2020;12. doi:10.3390/nu12061650
- 927 35. Andrade BB, Reis-Filho A, Souza-Neto SM, Clarêncio J, Camargo LMA, Barral  
928 A, et al. Severe *Plasmodium vivax* malaria exhibits marked inflammatory  
929 imbalance. *Malar J.* 2010;9: 13. doi:10.1186/1475-2875-9-13
- 930 36. Mendonça VRR, Souza LCL, Garcia GC, Magalhães BML, Lacerda MVG,  
931 Andrade BB, et al. DDX39B (BAT1), TNF and IL6 gene polymorphisms and  
932 association with clinical outcomes of patients with *Plasmodium vivax* malaria.  
933 *Malar J.* 2014;13: 278. doi:10.1186/1475-2875-13-278

- 934 37. Hojo-Souza NS, Pereira DB, de Souza FSH, de Oliveira Mendes TA, Cardoso  
935 MS, Tada MS, et al. On the cytokine/chemokine network during Plasmodium  
936 vivax malaria: new insights to understand the disease. *Malar J.* 2017;16: 42.  
937 doi:10.1186/s12936-017-1683-5
- 938 38. Raza A, Ghanchi NK, Sarwar Zubairi A bin, Raheem A, Nizami S, Beg MA.  
939 Tumor necrosis factor  $\alpha$ , interleukin-10, intercellular and vascular adhesion  
940 molecules are possible biomarkers of disease severity in complicated  
941 Plasmodium vivax isolates from Pakistan. *PLoS One.* 2013;8: e81363.  
942 doi:10.1371/journal.pone.0081363
- 943 39. Mendonça VRR, Queiroz ATL, Lopes FM, Andrade BB, Barral-Netto M.  
944 Networking the host immune response in Plasmodium vivax malaria. *Malar J.*  
945 2013;12: 69. doi:10.1186/1475-2875-12-69
- 946 40. Kurtzhals JA, Adabayeri V, Goka BQ, Akanmori BD, Oliver-Commey JO,  
947 Nkrumah FK, et al. Low plasma concentrations of interleukin 10 in severe  
948 malarial anaemia compared with cerebral and uncomplicated malaria. *Lancet*  
949 (London, England). 1998;351: 1768–72. doi:10.1016/S0140-6736(97)09439-7
- 950 41. May J, Lell B, Luty AJ, Meyer CG, Kremsner PG. Plasma interleukin-10:Tumor  
951 necrosis factor (TNF)-alpha ratio is associated with TNF promoter variants and  
952 predicts malarial complications. *J Infect Dis.* 2000;182: 1570–3.  
953 doi:10.1086/315857
- 954 42. Riley EM, Wahl S, Perkins DJ, Schofield L. Regulating immunity to malaria.  
955 *Parasite Immunol.* 28: 35–49. doi:10.1111/j.1365-3024.2006.00775.x
- 956 43. Langhorne J, Albano FR, Hensmann M, Sanni L, Cadman E, Voisine C, et al.  
957 Dendritic cells, pro-inflammatory responses, and antigen presentation in a rodent  
958 malaria infection. *Immunol Rev.* 2004;201: 35–47. doi:10.1111/j.0105-  
959 2896.2004.00182.x
- 960 44. Gonçalves RM, Scopel KKG, Bastos MS, Ferreira MU. Cytokine balance in  
961 human malaria: does Plasmodium vivax elicit more inflammatory responses than  
962 Plasmodium falciparum? *PLoS One.* 2012;7: e44394.  
963 doi:10.1371/journal.pone.0044394
- 964 45. Vinhaes CL, Sheikh V, De-Souza DO, Wang J, Rupert A, Roby G, et al. An  
965 inflammatory composite score predicts mycobacterial IRIS in people with HIV  
966 and severe lymphopenia: A prospective international cohort study. *J Infect Dis.*  
967 2020. doi:10.1093/infdis/jiaa484
- 968 46. Odedra A, Webb L, Marquart L, Britton LJ, Chalon S, Moehrle JJ, et al. Liver  
969 Function Test Abnormalities in Experimental and Clinical Plasmodium vivax  
970 Infection. *Am J Trop Med Hyg.* 2020. doi:10.4269/ajtmh.20-0491
- 971 47. Putrianti ED, Schmidt-Christensen A, Heussler V, Matuschewski K, Ingmundson  
972 A. A Plasmodium cysteine protease required for efficient transition from the liver  
973 infection stage. *PLoS Pathog.* 2020;16: e1008891.  
974 doi:10.1371/journal.ppat.1008891

- 975 48. Yui K, Inoue S-I. Host-pathogen interaction in the tissue environment during  
976 Plasmodium blood-stage infection. *Parasite Immunol.* 2021;43: e12763.  
977 doi:10.1111/pim.12763
- 978 49. Cucunubá ZM, Guerra AP, Rahirant SJ, Rivera JA, Cortés LJ, Nicholls RS.  
979 Asymptomatic Plasmodium spp. infection in Tierralta, Colombia. *Mem Inst*  
980 *Oswaldo Cruz.* 2008;103: 668–73. doi:10.1590/s0074-02762008000700007
- 981 50. Andrade BB, Rocha BC, Reis-Filho A, Camargo LMA, Tadei WP, Moreira LA,  
982 et al. Anti-Anopheles darlingi saliva antibodies as marker of Plasmodium vivax  
983 infection and clinical immunity in the Brazilian Amazon. *Malar J.* 2009;8: 121.  
984 doi:10.1186/1475-2875-8-121
- 985 51. Andrade BB, Araújo-Santos T, Luz NF, Khouri R, Bozza MT, Camargo LMA, et  
986 al. Heme impairs prostaglandin E2 and TGF-beta production by human  
987 mononuclear cells via Cu/Zn superoxide dismutase: insight into the pathogenesis  
988 of severe malaria. *J Immunol.* 2010;185: 1196–204.  
989 doi:10.4049/jimmunol.0904179
- 990 52. Andrade BB, Reis-Filho A, Barros AM, Souza-Neto SM, Nogueira LL, Fukutani  
991 KF, et al. Towards a precise test for malaria diagnosis in the Brazilian Amazon:  
992 comparison among field microscopy, a rapid diagnostic test, nested PCR, and a  
993 computational expert system based on artificial neural networks. *Malar J.* 2010;9:  
994 117. doi:10.1186/1475-2875-9-117
- 995 53. Andrade BB, Reis-Filho A, Souza-Neto SM, Raffaele-Netto I, Camargo LMA,  
996 Barral A, et al. Plasma superoxide dismutase-1 as a surrogate marker of vivax  
997 malaria severity. *PLoS Negl Trop Dis.* 2010;4: e650.  
998 doi:10.1371/journal.pntd.0000650
- 999 54. Mendonça VRR, Luz NF, Santos NJG, Borges VM, Gonçalves MS, Andrade BB,  
1000 et al. Association between the haptoglobin and heme oxygenase 1 genetic  
1001 profiles and soluble CD163 in susceptibility to and severity of human malaria.  
1002 *Infect Immun.* 2012;80: 1445–54. doi:10.1128/IAI.05933-11

1003

1004

1005 **Supporting Information**

1006 **S1 File.** Raw data used in the analyses.

1007 **S1 Table.** Characteristics of the study participants.

1008 **S1 Figure.** Epidemiological and immune factors associated with symptomatic

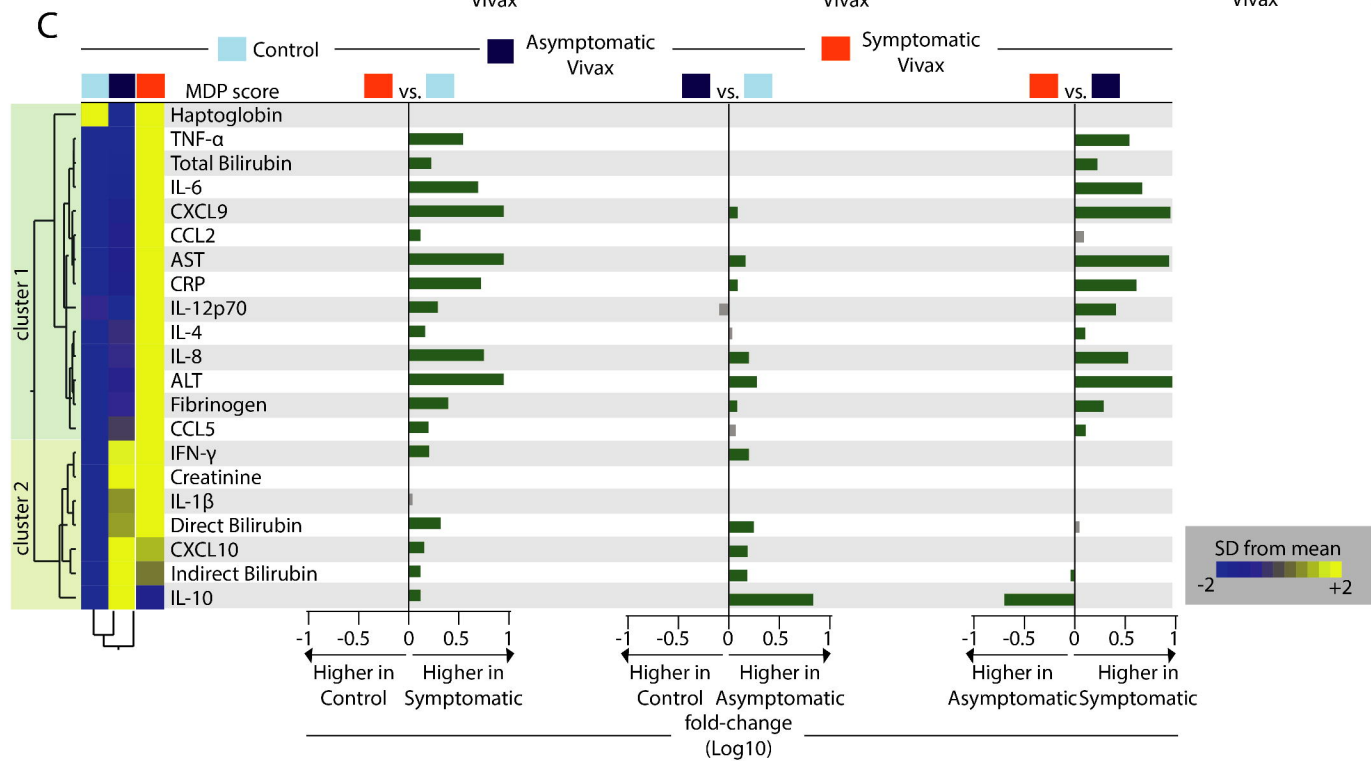
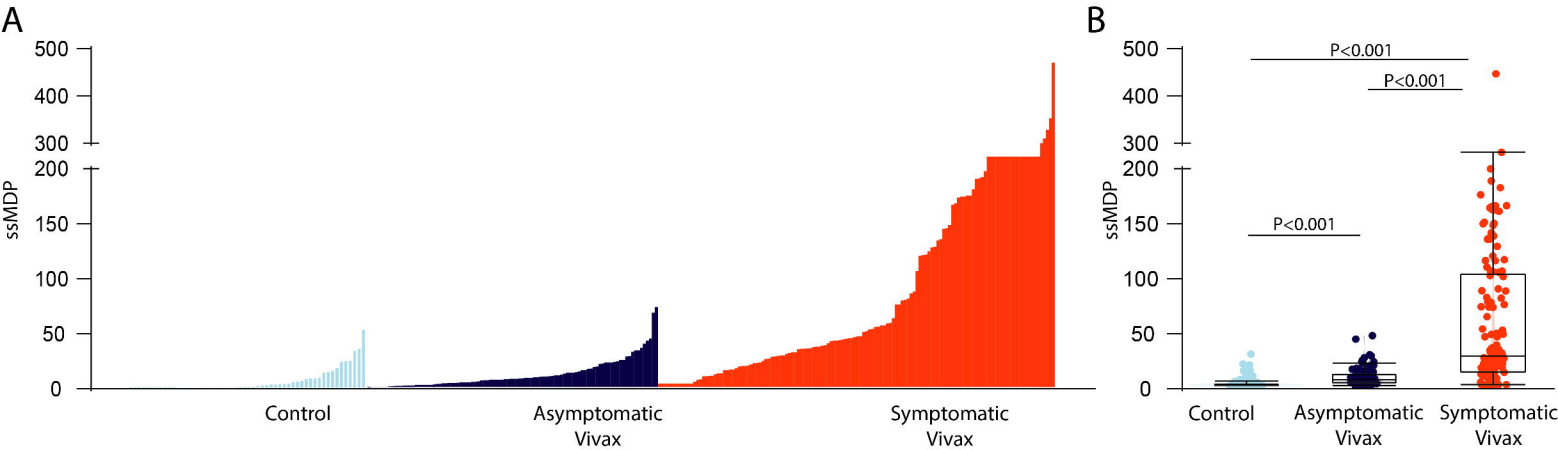
1009 *Plasmodium vivax* malaria.

1010 **S2 Figure.** Determinants of the global degree of perturbation.

1011 **S3 Figure.** Influences of age and number of previous episodes in the inflammatory

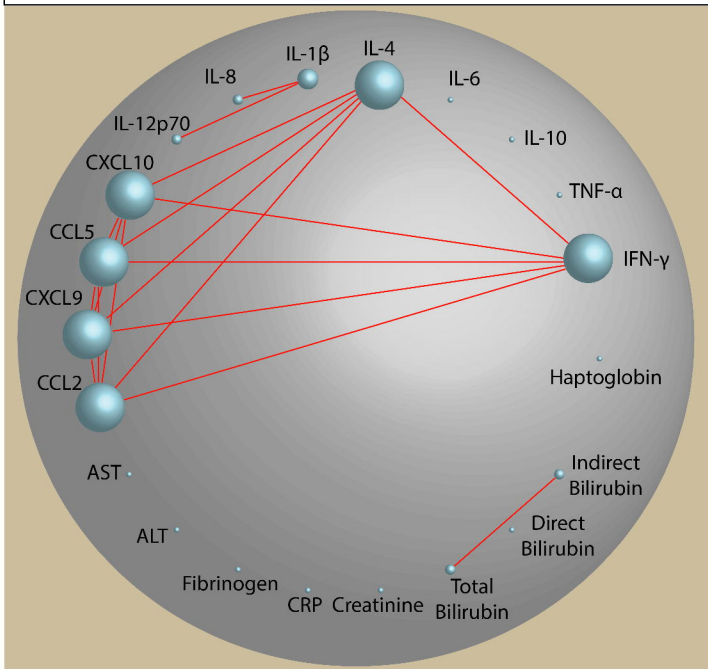
1012 imbalance in *Plasmodium vivax* infection.





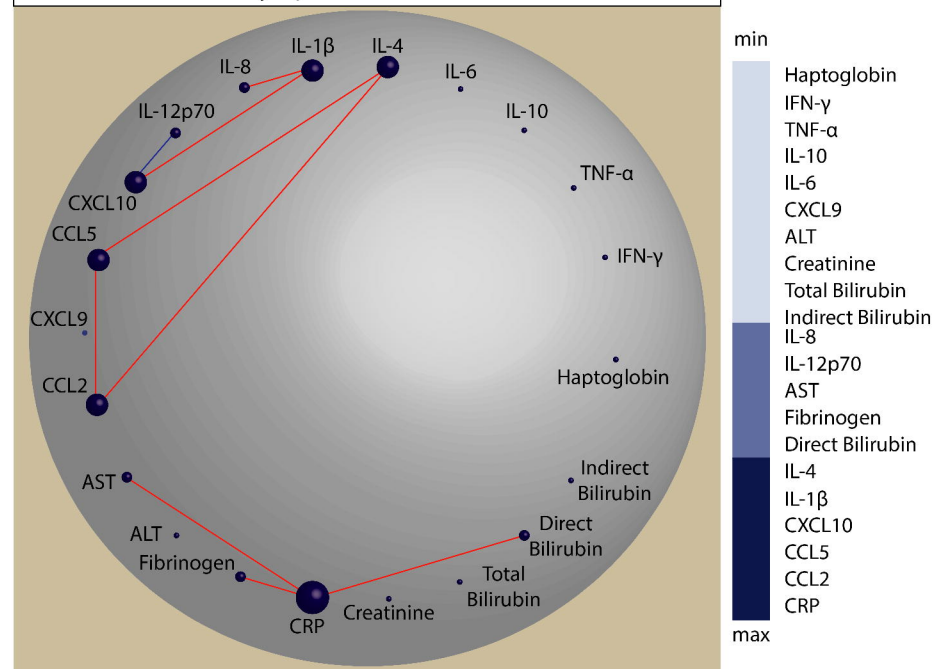
A

Control



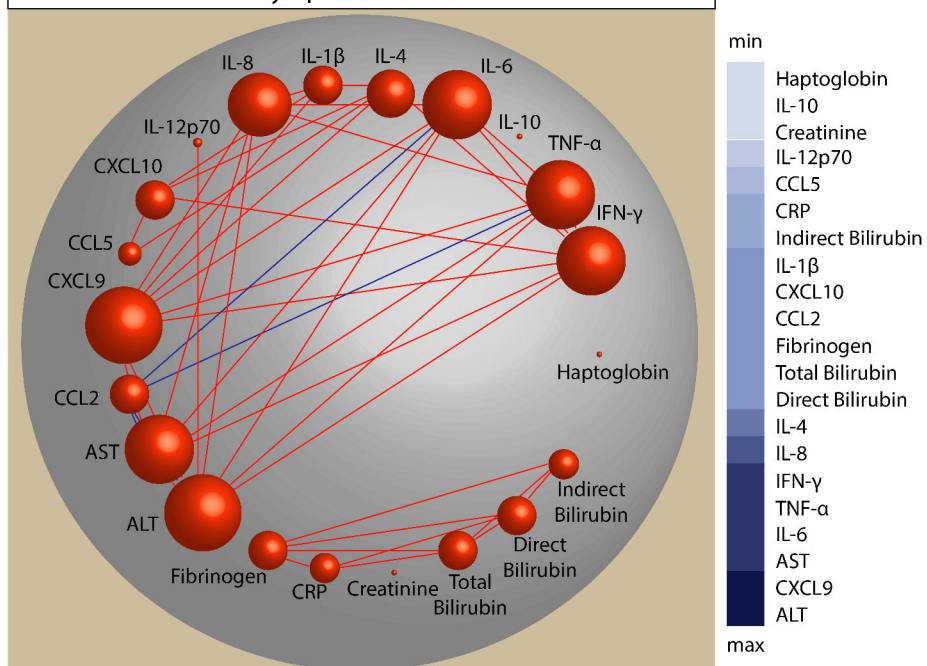
B

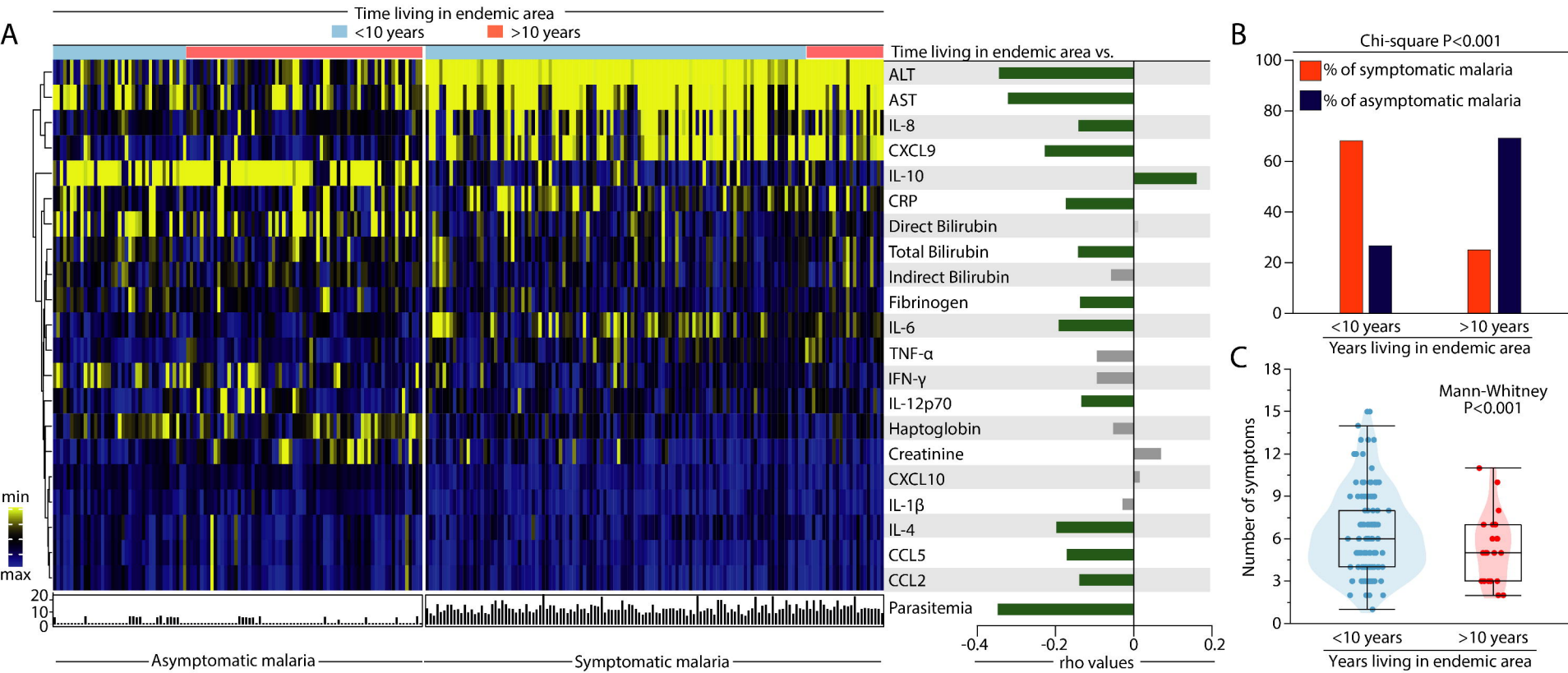
Asymptomatic Vivax

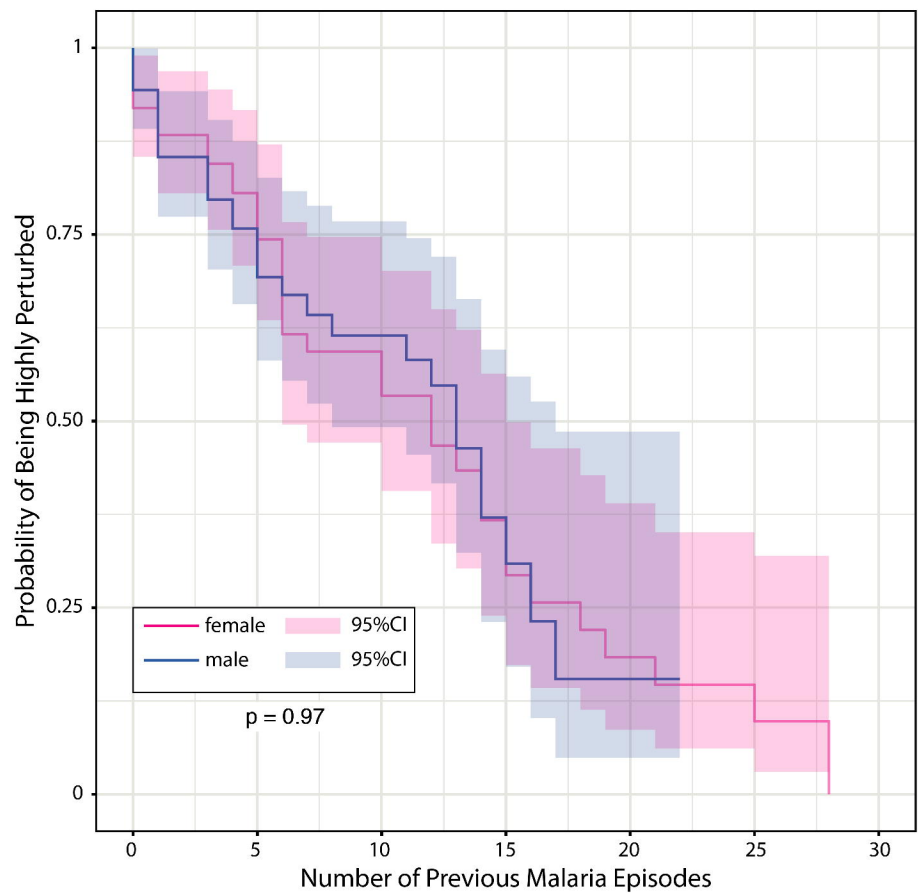
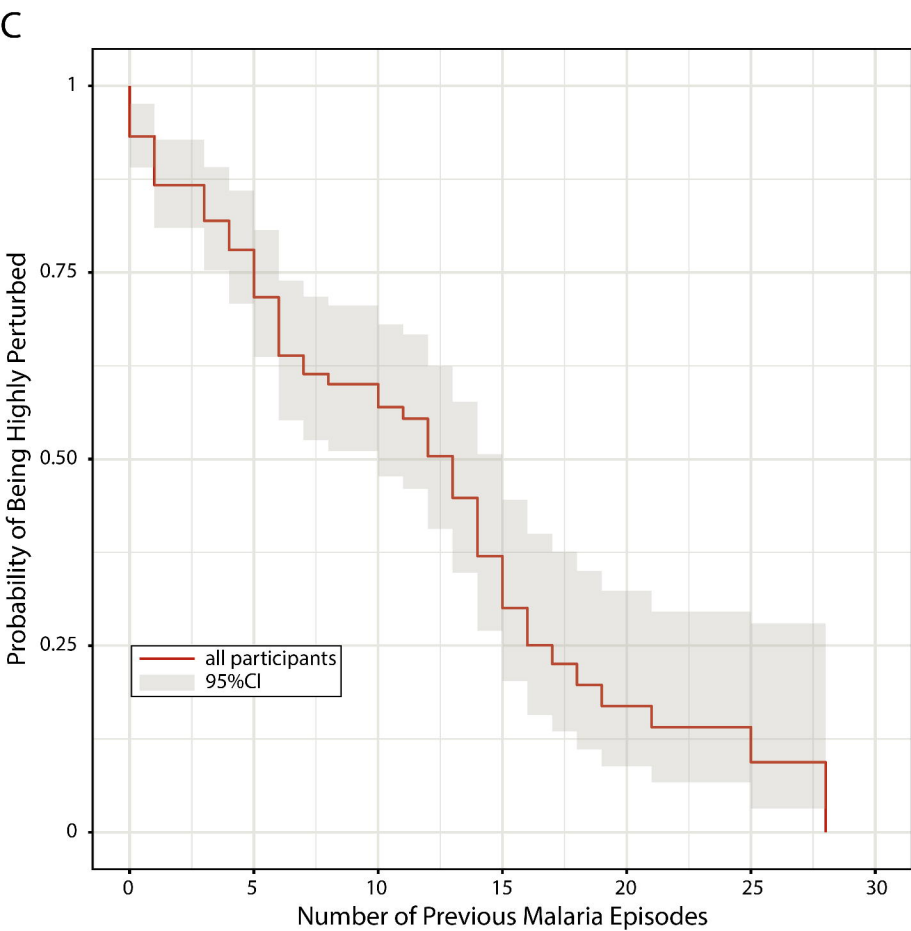
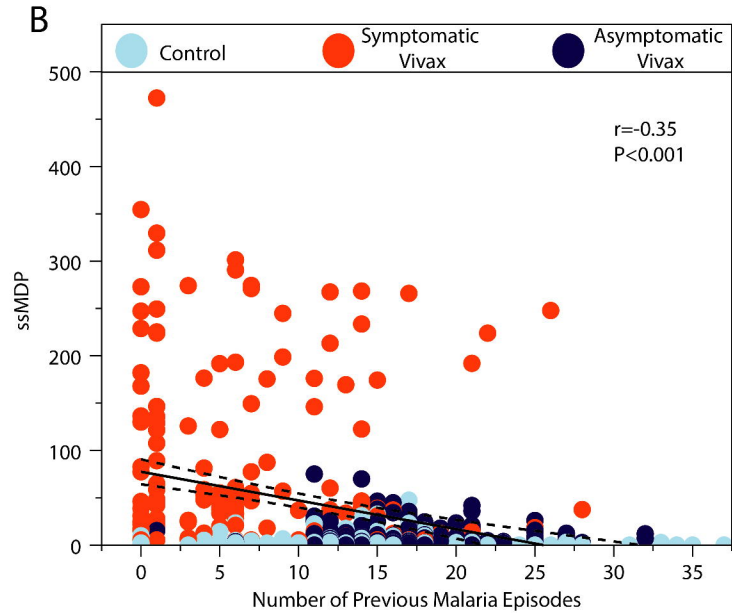
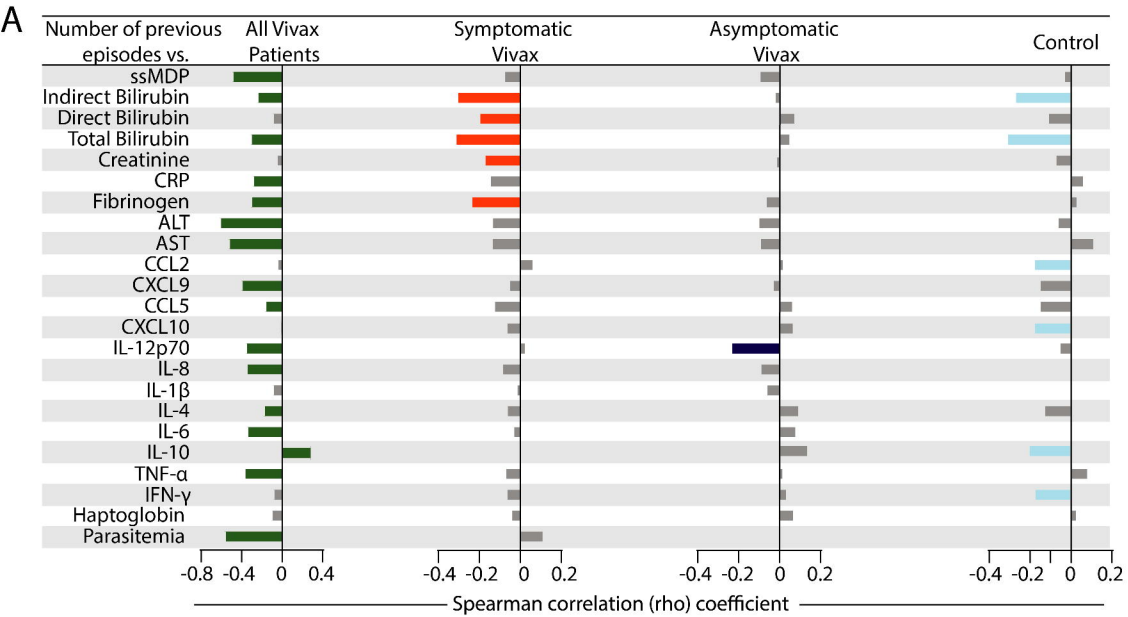


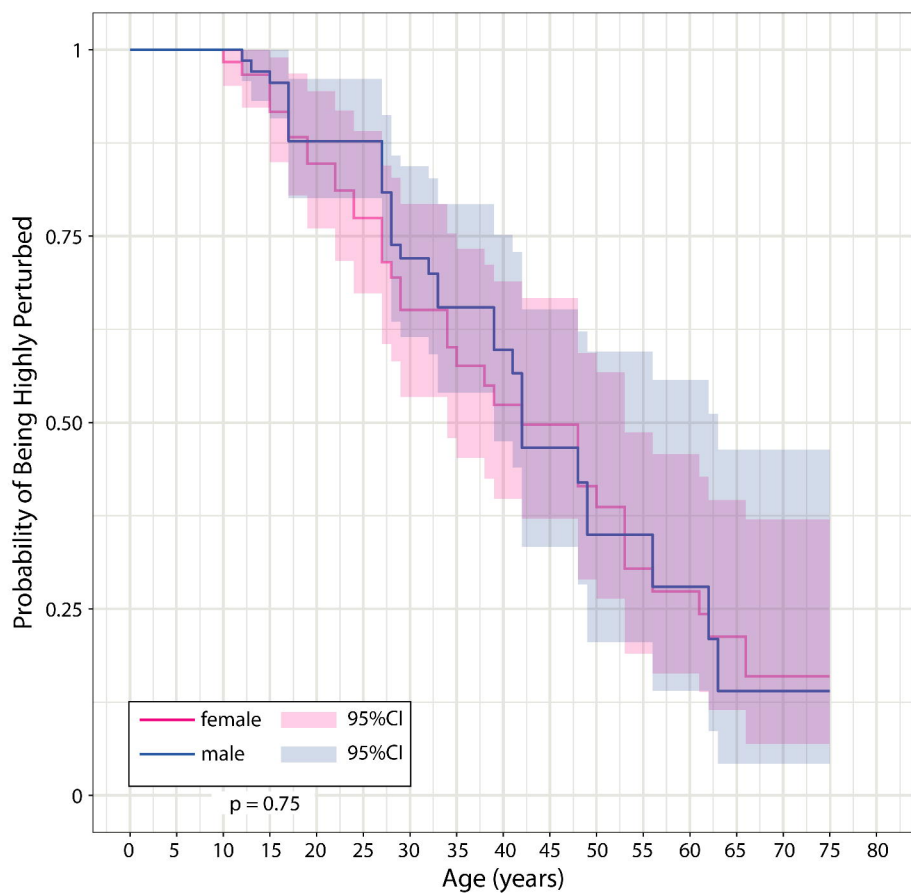
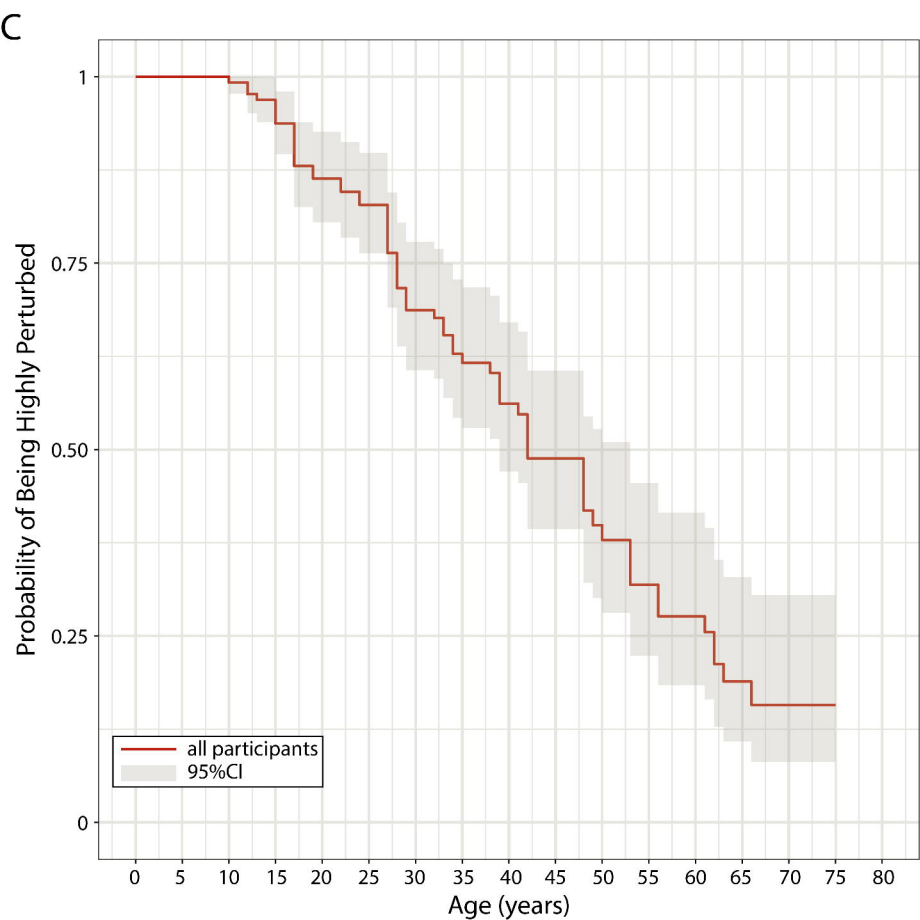
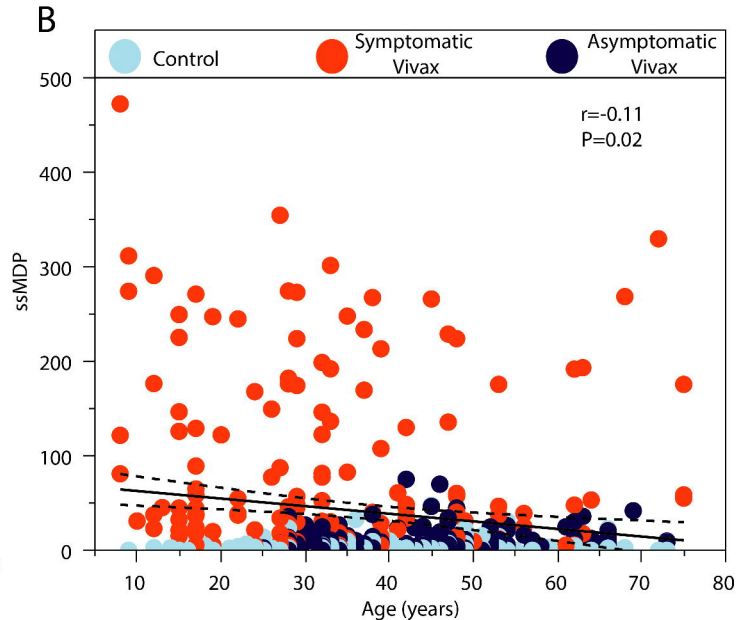
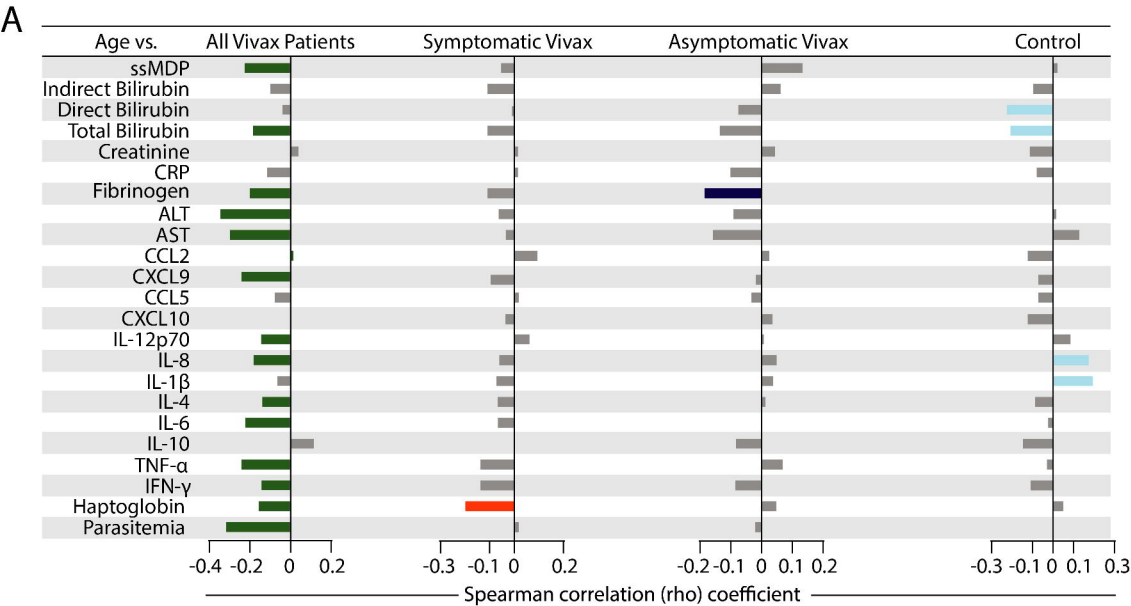
C

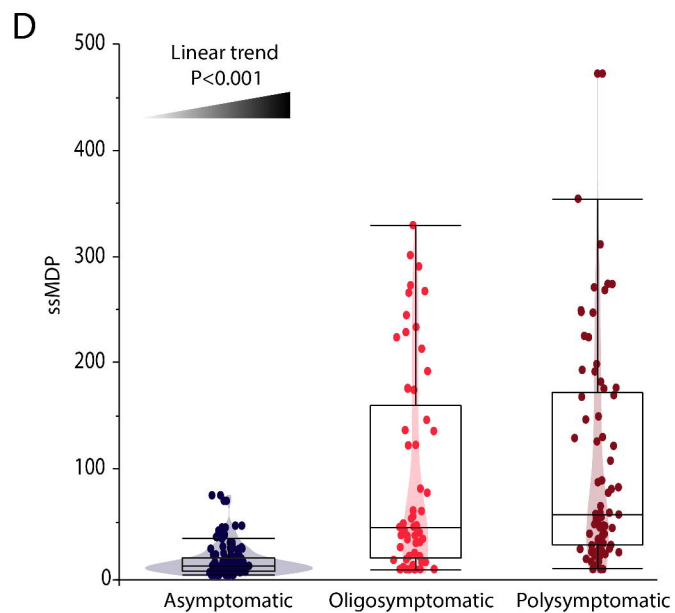
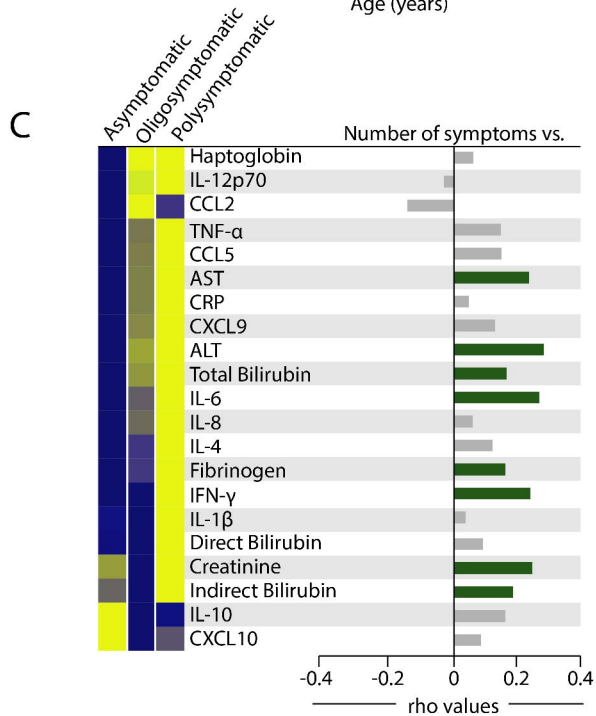
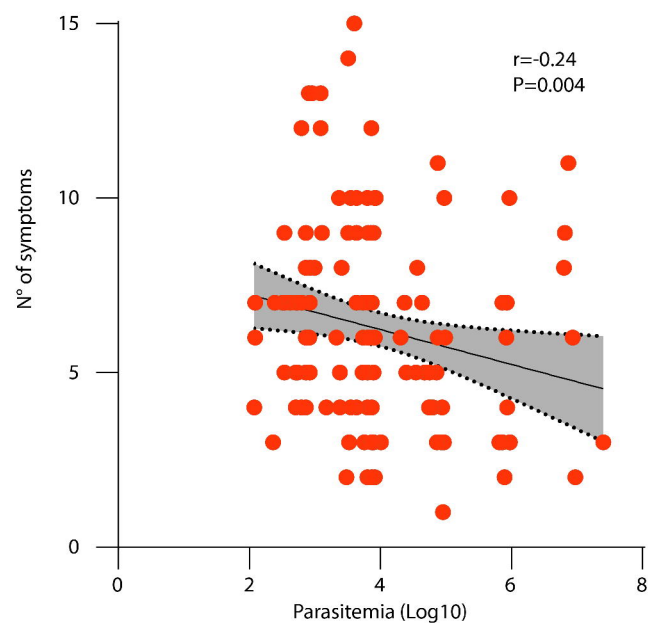
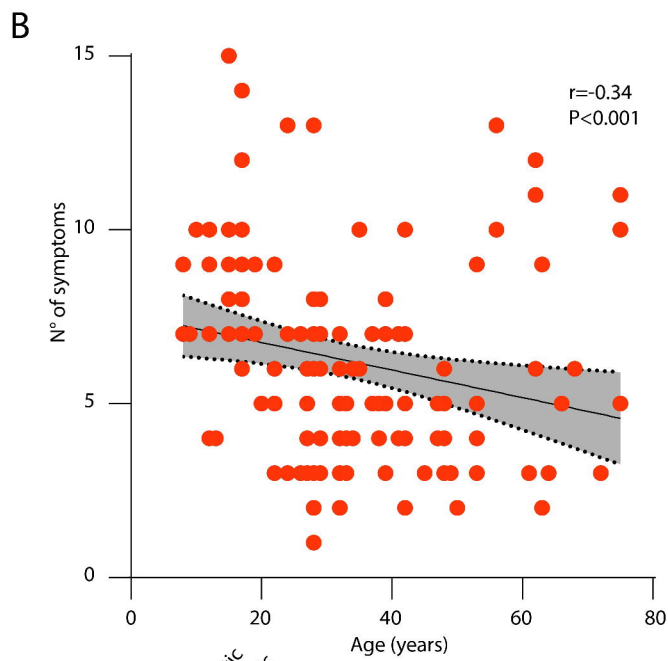
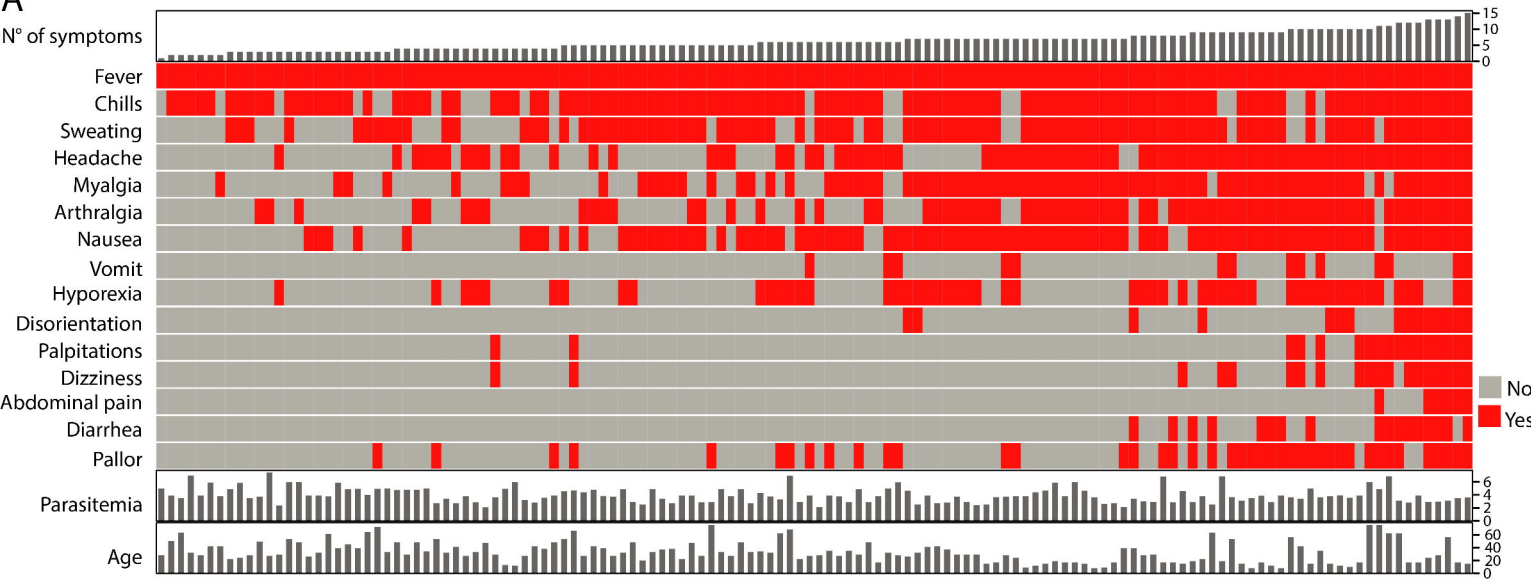
Symptomatic Vivax



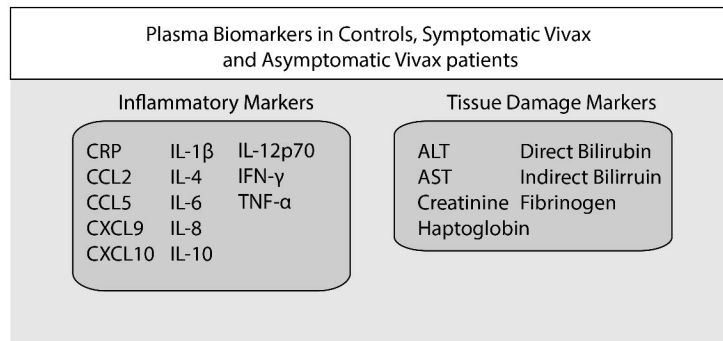




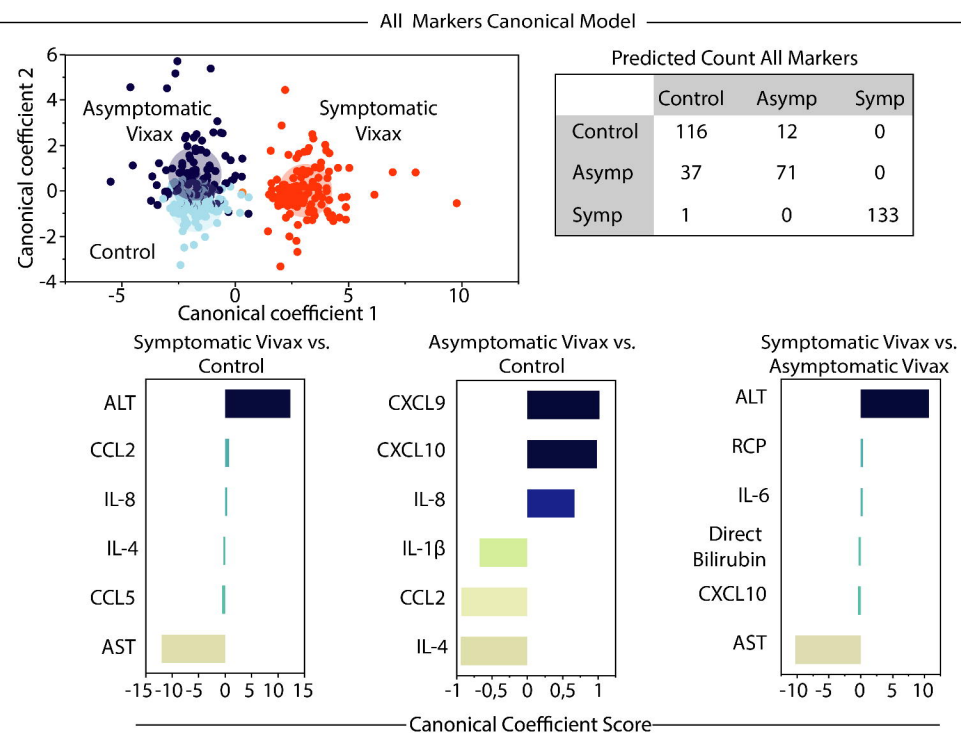




A

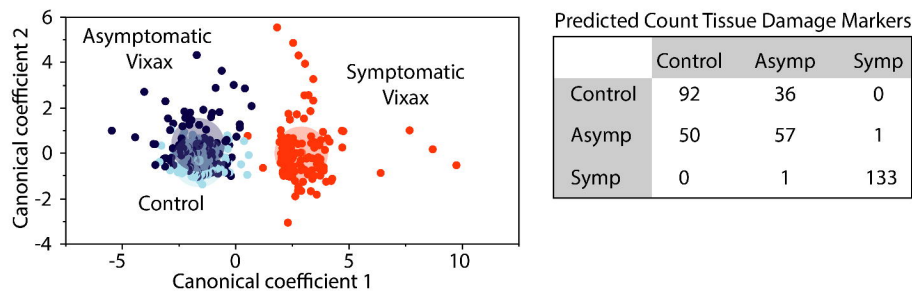


B



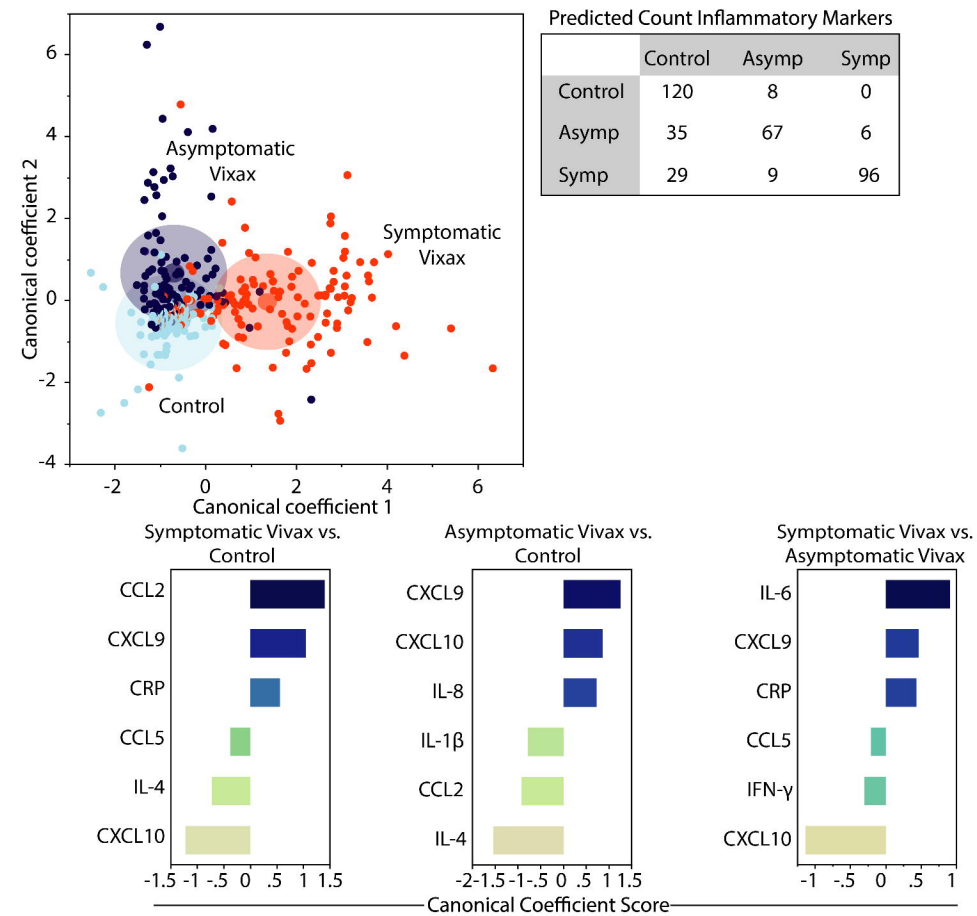
C

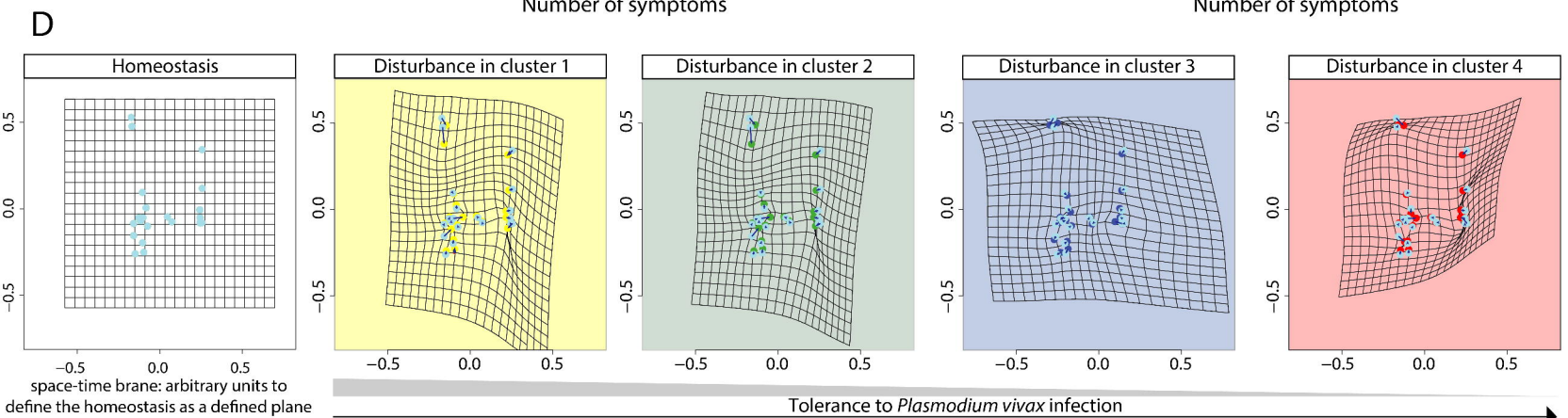
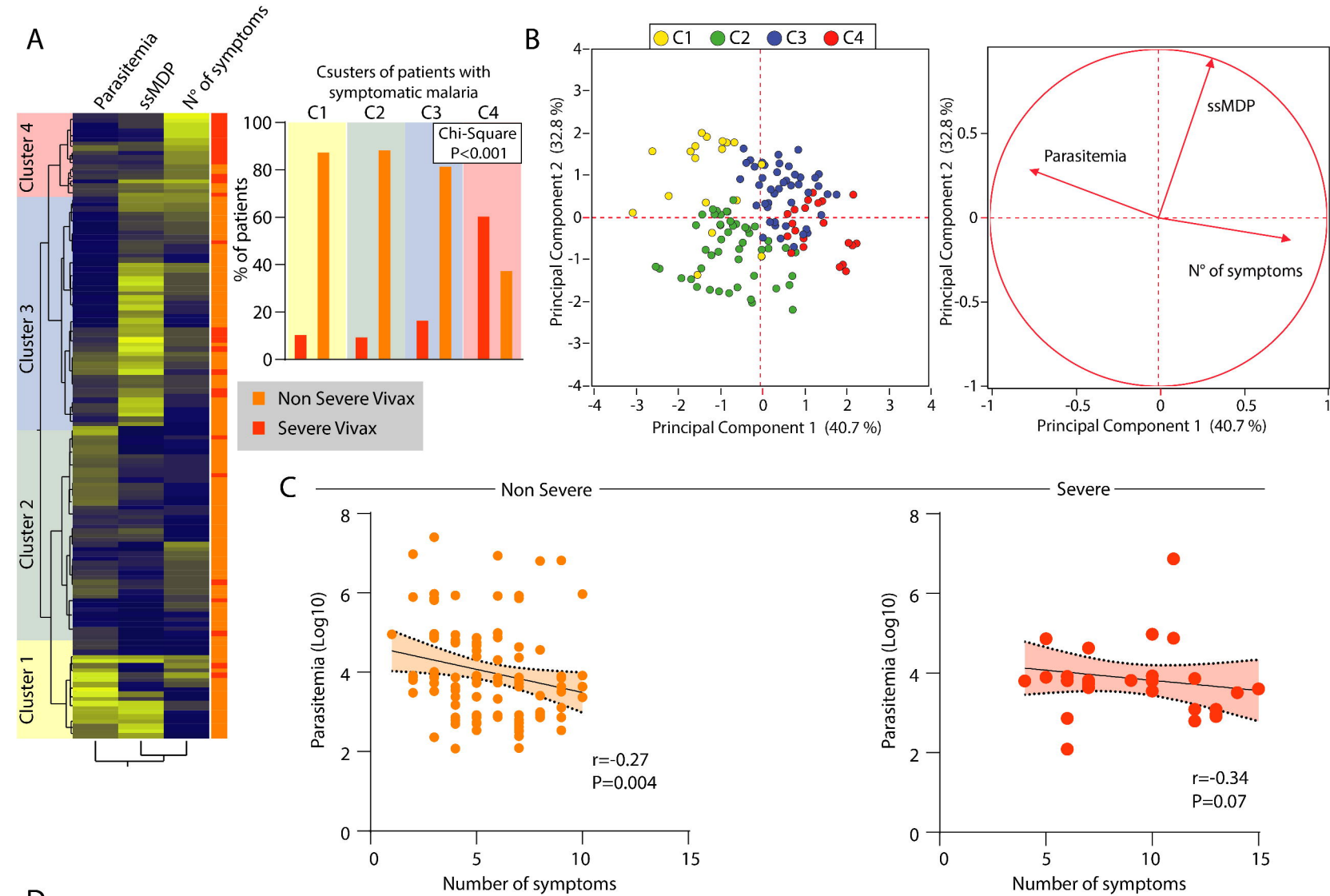
Tissue Damage Canonical Model



D

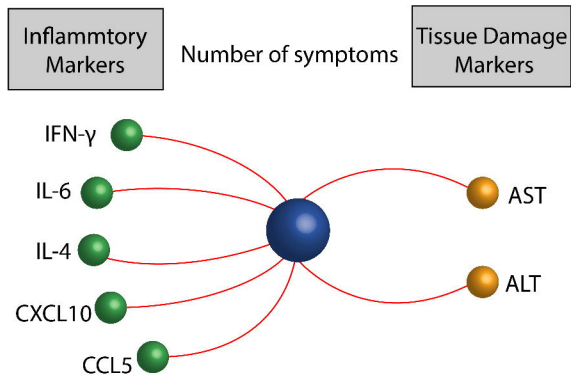
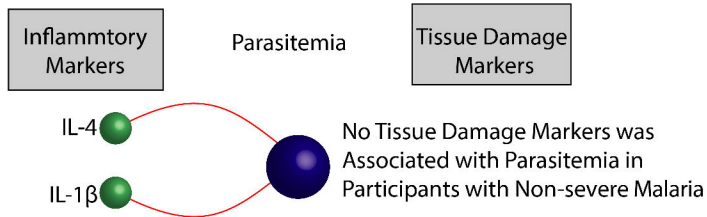
Inflammatory Canonical Model







Non Severe



Severe

