

## **Tocilizumab efficacy in COVID-19 patients is associated with respiratory severity-based stages**

Melchor Alvarez-Mon MD,<sup>1,2,3,4</sup>\*, Angel Asunsolo<sup>3,5,6</sup>\*, José Sanz<sup>2,7</sup>, Benjamin Muñoz<sup>2,7</sup>, José Alberto Arranz-Caso<sup>2,7</sup>, Maria Novella Mena<sup>7</sup>, Cristina Hernández-Gutiérrez<sup>7</sup>, Jorge Navarro<sup>7</sup>, Maria Cristina Lozano Duran<sup>7</sup>, Juan Arévalo Serrano<sup>7</sup>, Rocío Henche Sanchez<sup>7</sup>, Lara Bravo Quiroga<sup>8</sup>, Julio Flores Segovia<sup>8</sup>, Marta Garcia Sanchez<sup>7</sup>, Aida Gutierrez Garcia<sup>7</sup>, Ana Pérez<sup>1,2</sup>, Marta Herrero<sup>9</sup>, Nieves Plana<sup>3,10</sup>, Daniel Troncoso<sup>10</sup>, Gorjana Rackov<sup>11</sup>, Carlos Martinez-A<sup>11</sup> and Dimitrios Balomenos<sup>11, \* §</sup>, for The Medicine-COVID19 HUPA group.

1. Internal Medicine Service and Rheumatology-Autoimmunity Service. “Príncipe de Asturias” University Hospital. Alcala de Henares, Madrid. Spain; 2. Department of Medicine and Medical Specialties. Alcala University. Madrid. Spain; 3. Ramón y Cajal Health Research Institute; 4. Ciber HyD. 5. Department of Surgery and Medical Social Sciences. Alcala University. Madrid. Spain; 6. Department of Epidemiology & Biostatistics. Graduate School of Public Health and Health Policy, City University of New York, New York, NY, United States; 7. Internal Medicine Service “Príncipe de Asturias” University Hospital. Alcala de Henares, Madrid. Spain; 8. Respiratory Medicine Service “Príncipe de Asturias” University Hospital. Alcala de Henares, Madrid. Spain; 9. Pharmacy Service. “Príncipe de Asturias” University Hospital. Alcala de Henares, Madrid. Spain; 10. Preventive Medicine Service. “Príncipe de Asturias” University Hospital. Alcala de Henares, Madrid. Spain; 11. Department of Immunology and Oncology. National Center for Biotechnology. Spanish National Research Council/CSIC, Madrid. Spain

\*Drs. M. Alvarez-Mon, A. Asunsolo and D. Balomenos contributed equally to this article.

§**Corresponding author:** Dr. D Balomenos.

Tel (+34) 91 585 5449

Fax (+34) 91 372 0493

email: [dbalomenos@cnb.csic.es](mailto:dbalomenos@cnb.csic.es)

**Key words:** tocilizumab, COVID-19, disease-stage, ARDS, immunomodulator

**Running Title:** Tocilizumab in COVID-19 severity stages

**Major Findings:**

Tocilizumab shows variable effectiveness depending on COVID-19 clinical respiratory severity (CRS) stages that could hinder analysis of its overall efficacy. Treatment suggested no effect in mild/moderate CRS1 patients, but led to a remarkable benefit in moderate/severe CRS2 patients, implying tocilizumab efficacy in non-ICU-admitted patients. In general, CRS classification emerges as an essential confounding factor in evaluating tocilizumab efficacy in broad-ranged patient severity studies.

**Author contributions:**

MAM, DB and CM conceived the main idea. MAM, AA and DB designed the study and analyzed results. DB wrote the manuscript and supervised the data. MAM and AA contributed in writing the manuscript and supervised the data. AA performed statistical analyses. GR analyzed the data and contributed in figure and table elaboration. All other authors supervised treatment of patients and obtained and recorded clinical data.

## **ABSTRACT (351 words)**

**Background:** Tocilizumab treatment is investigated, and effectiveness in ICU-admitted COVID-19 patients has been reported. Although controversy exists regarding the efficacy of tocilizumab treatment, it has been suggested that tocilizumab might show positive results depending on patient severity status. We examined an association between tocilizumab and distinct disease severity stages.

**Methods and Findings:** From March 3 to March 23 2020, 494 consecutively admitted COVID-19 patients received tocilizumab or standard treatment alone. Data were obtained retrospectively. Clinical respiratory severity (CRS) stages were defined by patient oxygenation status and were also associated to scores of WHO clinical progression scale. We categorized patients in three stages, mild/moderate CRS1 ( $FiSpO_2 < 0.35$ ; WHO score 5), moderate/severe CRS2 ( $FiO_2 = 0.5$ /high flow mask; WHO score 6) and severe/critical CRS3 ( $FiO_2 < 80\%$ /high flow/prone position or mechanical ventilation; score  $> 6$ ). The primary outcome was the composite of death or ICU admission in patients of stages CRS1, CRS2, and CRS3, as well as in total patients. We also addressed mortality alone in total patients. Kaplan-Maier curves, Cox proportional regression and inverse probability weighting marginal structural models were used. We conducted the study from March 3 to April 7 2020 with broad-ranged severity patients; 167 tocilizumab-treated and 327 untreated. CRS1 patients showed no apparent benefit after treatment, while the risk of the primary outcome was greatly reduced in CRS2 treated participants (HR=0.22; 95% CI (0.16-0.44)). Moreover, tocilizumab treatment was associated with significantly decreased CRS2 patient proportion that reached the outcome compared to non-treated controls (27.8.0% vs. 65.4%;  $p < 0.001$ ). Severe/critical CRS3 patients, also showed benefit after treatment (HR=0.38; 95% CI (0.16-90)), although not as robust as was that of CRS2 treated individuals. Tocilizumab was associated with reduced outcome risk in total patients (HR=0.42; 95% CI (0.26-0.66)) after CRS adjustment,

but not if CRS classification was not accounted as confounding factor (HR=1.19; 95% CI (0.84-1.69)). The outcome of mortality alone upon tocilizumab treatment was significant (HR=0.58; 95% CI (0.35-0.96)) after accounting for CRS classification.

**Conclusions:** Tocilizumab treatment is associated with reduced COVID-19 escalation in CRS2 patients, suggesting efficacy in moderate/severe non-ICU-admitted patients. CRS classification could represent an essential confounding factor in evaluating tocilizumab in studies of broad-ranged severity patients.

## 1 INTRODUCTION

2 Severe acute respiratory syndrome coronavirus-2 (SARS-CoV-2), has spread worldwide  
3 and is considered pandemic. Approximately 10-15% of patients, primarily older individuals  
4 (1, 2) (> 60 years of age) develop severe COVID-19 (Coronavirus disease 2019) pneumonia  
5 that requires hospitalization and/or intensive care unit (ICU) admission and suffer high  
6 mortality rates.

7 COVID-19 progression is related to cytokine storm linked hyperinflammation, driving  
8 acute respiratory distress syndrome (ARDS), multiple organ failure and sepsis [3].  
9 Hyperinflammation and elevated cytokine and chemokine levels are associated with increased  
10 risk of death in patients with COVID-19 [4], providing rationale for immunomodulatory  
11 therapy [5,6]. Tocilizumab is a humanized monoclonal antibody that binds the soluble and  
12 membrane bound IL-6 receptor [7]. It has been approved for autoimmune disease treatment  
13 [8] and for CAR-T-therapy-related cytokine release syndrome [9,10].

14 Initial pilot studies suggested a possible tocilizumab effect in COVID-19 treatment [11].  
15 More recent cohort studies showed effectiveness of tocilizumab in severe/critical patients  
16 [12–15], while clinical trials established no effect of tocilizumab in early stage patients  
17 (mild/moderate) [16–18]. Some of the trials with negative results have been criticized [19,20]  
18 and limitations to these studies have been emphasized, generating controversy about the effect  
19 of tocilizumab [21]. Preliminary data from the COVACTA clinical trial [22] raised important  
20 questions about the efficacy of tocilizumab in reducing the duration of hospital and ICU stay.  
21 However, the EMPACTA trial suggested tocilizumab efficacy in delaying disease escalation  
22 [23]. Recently, preliminary data from the REMAP-CAP trial reported benefit in the most  
23 severely ill patients [24], while the RECOVERY trial demonstrated that tocilizumab reduces  
24 mortality in patients receiving corticosteroids [25]. Recent meta-analysis found an association

25 between tocilizumab and improved outcomes in moderate and severe patients (non-ICU), as  
26 well as in critically ill patients (ICU) [26].

27 We conducted a retrospective cohort study of 494 consecutively admitted COVID-19  
28 patients that were classified in stages according to their Clinical Respiratory Severity (CRS).  
29 We provide evidence that tocilizumab is associated with reduced disease escalation in a CRS-  
30 depending manner, and that CRS classification is a critical confounding factor to be  
31 accounted for upon evaluation of tocilizumab's therapeutic potential in the global patient  
32 population.

33

## 34 **METHODS**

35

### 36 **Patients**

37 Patients positive for SARS-Cov-2 from **March 3 to March 23 2020** who met the  
38 conditions of (1) respiratory rate  $\geq 30$  breaths/min, (2)  $SpO_2 \leq 94\%$  while breathing ambient  
39 air, and (3) thorax X-ray with opacities, were included in the study, as defined by the  
40 Diagnosis and Treatment Protocol for Novel Coronavirus Pneumonia (6th interim edition)  
41 [27].

42 We obtained demographic data, as well as comorbidities (cancer, diabetes mellitus,  
43 cardiovascular disease, chronic kidney disease, among others) from electronic health records.  
44 We registered clinical symptoms, time of disease onset and laboratory and radiological data.

45 Standard treatment (ST) included lopinavir/ritonavir, hydroxychloroquine, IFN- $\beta$  and  
46 azithromycin in case of secondary infections ([Supplementary Table 1](#)). IFN- $\beta$  administration  
47 depended on the comorbidity extent and on age ( $> 65$  years old). Two doses of IFN- $\beta$  (at  
48 admission and at 48 h, discontinued then after due to apparent patient worsening) were given  
49 to 89 tocilizumab-treated patients and to 90 controls. At admission, patients received oxygen  
50 support though low-flow nasal cannula to maintain  $SpO_2 > 90\%$ . Patients with increased  
51 oxygen needs were switched to high-flow oxygen mask (Venturi mask up to 50%  $FiO_2$ ).  
52 Mechanical ventilation (MV) was provided only to ICU admitted patients. Considering the  
53 critical situation at the hospital, access to ICU was limited and patients that would otherwise  
54 be admitted to ICU were treated on the ward.

### 55 **Study plan**

56 We carried out an open cohort study from **March 3 to April 7 2020**, including patients  
57 that received tocilizumab ([Supplementary Table 1](#)) in addition to ST or only ST.

58 Patient selection for tocilizumab treatment depended on the study design, the availability  
59 of tocilizumab and on ethical decisions, based on patient evolution during the time between

60 admission and treatment. ST was given to all patients of both groups upon admission. Patients  
61 received tocilizumab after four-day observation (60% of patients at 4 day; for all patients  
62 mean  $\pm$  SD,  $4.06 \pm 0.099$ ). Initial observation depended on SpO<sub>2</sub> levels and clinical evaluation.  
63 Patients with rapidly increasing oxygen needs or radiological or clinical worsening were  
64 prioritized to receive tocilizumab.

65 The study was approved by the institutional review board of the University Hospital Prince  
66 of Asturias (HUPA0406/20). All patients provided informed consent before starting  
67 treatment.

### 68 **Study definitions**

69 The study was designed to examine the effect of tocilizumab in patients of wide-ranged  
70 severity separated in groups. After data collection we classified patients according to  
71 oxygenation needs (FiO<sub>2</sub>) at the time of treatment and considering the WHO clinical  
72 progression scale [28], after its publication. We defined three clinical respiratory severity  
73 (CRS) stages; (1) CRS1; mild/moderate patients on low-flow oxygen supplementation  
74 FiO<sub>2</sub> ≤ 0.35, WHO score 5, (2) CRS2; moderate/severe patients on high-flow oxygen  
75 supplementation FiO<sub>2</sub> = 0.50, WHO score 6, (3) CRS3; severe/critical patients on high-flow  
76 oxygen supplementation FiO<sub>2</sub> = 0.50, prone position, or on MV in ICU at the day of treatment,  
77 WHO score >6. CRS3 patients were considered critical not only because of the critical  
78 respiratory status but also due to the severity of CRS3 patients which showed much higher  
79 proportions of death or ICU admission compared to CRS2 individuals.

80 Initially, patient severity was considered on the basis of SpO<sub>2</sub> measurements on ambient  
81 air and/or after low-flow oxygen supply during initial observation (24 hours or less). The  
82 groups were defined by patients with SpO<sub>2</sub> > 90% (corresponding to CRS1), 80% < SpO<sub>2</sub> < 90%  
83 (corresponding to CRS2), and SpO<sub>2</sub> < 80% (corresponding to CRS3). By the end of the study  
84 we considered that we had enough patients in order to proceed to statistical analysis. This



85 characterization was based on reports, showing that ARDS patients with oxygen  
86 supplementation and  $SpO_2 < 90\%$  show increased mortality, compared to patients with  
87  $SpO_2 > 90\%$  [29]. Also, COVID patients with dyspnea (frequently manifested at  $SpO_2 < 90\%$ )  
88 show propensity for disease escalation [30]. Furthermore, there is an association of  
89  $SpO_2 < 80\%$  patients with severe hypoxemia and increased risk of developing hypoxia [31–  
90 33].

### 91 **Outcomes of the study**

92 The primary outcome of the study was composite of death or admission to the ICU after  
93 tocilizumab treatment of CRS1, CRS2 and CRS3 stage patients, as well as of the total patient  
94 population.

95 In the secondary analysis death alone was conducted as endpoint, counting all in-hospital  
96 deaths of the patients. Deaths that occurred after ICU admission were available from hospital  
97 records and were also included in the analysis.

### 98 **Statistical analysis**

99 Descriptive statistics were used to summarize the data; age and days between onset of  
100 symptoms and hospital admission were reported as means and standard deviations, and  
101 laboratory results are reported as medians and interquartile ranges (IQR). Categorical  
102 variables were summarized as counts and percentages. Associations between patient  
103 characteristics and tocilizumab treatment were evaluated; in the case of categorical variables,  
104 we used a Pearson's chi-squared or Fisher exact test, and in the case of quantitative variables,  
105 Student's t test, the Mann-Whitney's U test, or Wilcoxon's test, as appropriate. No imputation  
106 was made for missing data and no sample size calculations were performed.

107 We conducted a Cox proportional regression model with fixed covariates of patients from  
108 the day of treatment to the day of ICU admission or death for the different patient CRS stages  
109 adjusting for age, sex and IFN- $\beta$  treatment. For total patients Cox analysis was also adjusted

110 for CRS stages (CRS1, CRS2, CRS3). The start date of the follow-up was the day they  
111 received the medication. There were no differences in censorship for hospital discharge in  
112 both treated and untreated groups. We tested the proportional-hazards assumption on the basis  
113 of Schoenfeld residuals. This model may produce biased effect estimates when there are time-  
114 dependent confounders, which are affected by previous treatment or exposure. In this study,  
115 the CRS status is both a time-dependent confounder of the causal effect of the treatment on  
116 survival and is affected by past treatment [34,35]. We thus conducted a marginal structural  
117 model to estimate the causal effect of tocilizumab on the severe COVID-19 patients. We  
118 carried out an unweighted pooled logistic regression, treating each person-day as an  
119 observation (model 2). We fitted a pooled logistic regression weighted by the inverse-  
120 probability-of-treatment (IPWT). Each patient in the above logistic model received a time-  
121 varying weight inversely proportional to the estimated probability of having his/her own  
122 observed history of tocilizumab initiation, as described [34,36]. This weighting means that  
123 observations on the same subject will correlate, we therefore used the robust standard errors  
124 for clustering. Follow-up start day was the day of admission.

125 All models were adjusted for CRS stages (unless otherwise mentioned), sex, age, and  
126 IFN- $\beta$  treatment. All statistical analyses were performed using STATA v14 SE or SPSSv26.

127

## 128 **RESULTS**

129 We included 494 consecutively admitted patients, positive for SARS-CoV-2 and COVID-  
130 19 pneumonia. 167 patients received tocilizumab, while 327 did not (Figure 1). Age, gender  
131 distribution and frequency of comorbidities were similar for both groups (Table 1). Disease  
132 was classified in stages CRS1, CRS2 and CRS3 according to severity. Due to clinical  
133 selection, CRS2 and CRS3 stages had higher proportions of treated than untreated patients  
134 (Table 1). Occurrence of secondary infections was minimal (<5%) by both patient groups, and  
135 no opportunistic infections were recorded.

## 136 **CRS stage characteristics**

137 CRS definition was validated after data collection. First, age, sex and comorbidities were  
138 found balanced within the CRS1, CRS2 and CRS3 stages ([Table 2](#)), indicating no bias in CRS  
139 definition. Second, CRP and HDL levels increased according to disease severity  
140 (CRS1<CRS2<CRS3), while lymphocyte concentrations were inversely correlated to this  
141 pattern ([Table 2](#)). These results support the CRS stage definition, since inflammation-  
142 associated factors are associated to COVID-19 severity [3], and hypoxemia could exacerbate  
143 inflammatory progression [37]. Third, SpO<sub>2</sub> levels at baseline and after oxygen  
144 supplementation followed the CRS stage severity graduation ([Table 2](#)). SpO<sub>2</sub>/FiO<sub>2</sub> ratios were  
145 obtained for CRS1, CRS2 and CRS3 patients on the basis of SpO<sub>2</sub> limit values, as FiO<sub>2</sub> was  
146 ≤35% for CRS1, while all CRS2 and CRS3 patients received FiO<sub>2</sub>=50% or MV after ICU  
147 admission ([Table 2](#)). CRS stages were correlated to ARDS development, since SpO<sub>2</sub>/FiO<sub>2</sub>  
148 cutoffs of 100<200<300 predict ARDS [38]. Thus, for CRS1, SpO<sub>2</sub>/FiO<sub>2</sub> reflected lower  
149 probability for ARDS and higher probability for CRS2 and CRS3 stages. Equivalent  
150 PaO<sub>2</sub>/FiO<sub>2</sub> ratios were estimated from SPO<sub>2</sub>/FiO<sub>2</sub> values [39] ([Table 2](#)) and were cautiously  
151 considered, since they were not directly obtained. Thus, CRS1 stage corresponded to mild,  
152 CRS2 to moderate and CRS3 to severe ARDS, according to established criteria [40,41].  
153 Based on the above results, we considered the disease of CRS1 as mild/moderate, CRS2 as  
154 moderate/severe and CRS3 as severe/critical, since at baseline CRS3 patients received high-  
155 flow oxygen or MV after ICU admission.

## 156 **Outcomes**

157 Analysis of the tocilizumab effect on the primary outcome for CRS1, CRS2 and CRS3  
158 patients included Kaplan-Meier survival curves and multivariate Cox regression after  
159 adjusting for age, sex and the IFN-β impact. In CRS1 patients, tocilizumab did not show an  
160 apparent effect in lowering the outcome risk (HR=0.76 95% CI (0.34, 1.70)) ([Figure 2A](#)).

161 Although the percentage of CRS1 patients that reached the endpoint was reduced (23.5%  
162 untreated vs. 15.6% treated), the results lacked significance (Figure 2B). On the other hand,  
163 the data show significantly delayed outcome in tocilizumab treated CRS2 and CRS3 patients  
164 (Figure 2A). A benefit was probable to occur for CRS2 treated patients (HR=0.22 95% CI  
165 (0.16, 0.44)) and for CRS3 patients (HR=0.38 95% CI (0.16, 0.90)) (Figure 2A). Moreover,  
166 our data indicated that tocilizumab could significantly reduce the proportion of CRS2 patients  
167 that reached the endpoint (65.4% untreated vs. treated 27.8% patients;  $p < 0.001$ ) (Figure 2B).  
168 Such reduction appeared to be not significant for treated CRS3 patients, possibly due to the  
169 low number of untreated patients in CRS3. These data suggest that tocilizumab could be most  
170 effective when administered to CRS2 stage patients.

171 In the entire treated population, tocilizumab greatly reduced CRP levels and elevated  
172 lymphocyte concentrations 48 h post-treatment (Supplementary Table 2), corroborating  
173 previous reports [3]. To evaluate the effect of tocilizumab in all patients with respect to the  
174 composite endpoint, we conducted a multivariate Cox proportional-hazards analysis and  
175 accounted for CRS stage classification as confounding variable, in addition to age, sex and  
176 the impact of IFN- $\beta$ . We showed an association between tocilizumab treatment and reduced  
177 risk of reaching the composite outcome (Figure 3A and Table 3, model 1).

178 In secondary analysis, Cox evaluation including the above adjustments, also indicated  
179 reduced risk for mortality alone after tocilizumab treatment, considering all hospital deaths  
180 (HR=0.58 95% CI (0.35, 0.96)).

181 Disease status of COVID-19 patients was a decisive confounding factor to be accounted  
182 for regression analysis for our broad-ranged population. Notably, Cox analysis, that did not  
183 account for CRS stages but included all other mentioned confounding parameters, showed no  
184 effect of tocilizumab in reducing the risk for the composite outcome (HR=1.19 CI 95% (0.84-  
185 1.69)) (Figure 3B and Supplementary Table 3).

186 In addition to Cox based evaluation in all patients, we conducted an unweighted pooled  
187 logistic regression analysis for death or ICU admission and a weighted pooled logistic  
188 regression by IPWT (Table 3, models 2, 3). These models indicated that tocilizumab relates  
189 with a reduced risk in patient mortality or ICU admission, and that age, but not sex,  
190 significantly increased the risk for the end event. The risk for the outcome was significantly  
191 increased by IFN- $\beta$  treatment, at least by model 1. Importantly, the three models confirmed  
192 that the patients' CRS stage is a significant risk factor for death or ICU admission and  
193 confirmed that the CRS2 that CRS3 patients, as compared to CRS1, present a significantly  
194 higher probability of reaching the end event.

195

## 196 **DISCUSSION**

197 In this retrospective cohort study we tested tocilizumab efficacy in COVID-19 patients  
198 according to their clinical respiratory severity, and we concluded that: (1) tocilizumab had no  
199 apparent effect in reducing the risk of composite outcome (death or ICU admission)  
200 mild/moderate CRS1 patients; (2) the benefit from tocilizumab treatment was particularly  
201 pronounced in patients categorized as CRS2 (moderate/severe) and to a lesser extent in CRS3  
202 patients (severe/critical); (3) analysis of total patients as a single population required CRS  
203 stage adjustment to show beneficial effect for tocilizumab.

204 Measuring SpO<sub>2</sub> is not invasive and was easier to perform under the critical conditions of  
205 the COVID-19 pandemic. SpO<sub>2</sub>-based CRS stage classification is reinforced by another study  
206 showing that after oxygen supplementation, SpO<sub>2</sub>>90% predicted survival, while SpO<sub>2</sub><90%  
207 levels were associated with COVID-19 escalation [42]. Results obtained during the study,  
208 such as CRP levels, SpO<sub>2</sub>/FiO<sub>2</sub> and estimated PaO<sub>2</sub>/FiO<sub>2</sub> ratios further validated CRS stage  
209 classification and corroborated the stage severity CRS1< CRS2< CRS3. Further refining of

210 CRS stages using additional oxygenation, inflammatory and clinical parameters might aid in  
211 optimizing prediction of the earliest point of tocilizumab delivery.

212 Current views on tocilizumab use suggest no effect on early stage hospitalized patients but  
213 therapeutic benefit in severe/critical patients [43–45]. We found that tocilizumab did not  
214 provide significant benefit on disease progression for mild/moderate CRS1 patients  
215 (estimated  $\text{PaO}_2/\text{FiO}_2 > 240$  mm Hg). This concurs with randomized trials, which showed no  
216 benefit after tocilizumab treatment in patients with mild/moderate disease severity  
217 ( $200 < \text{PaO}_2/\text{FiO}_2 < 300$  mm Hg) [16–18].

218 For CRS2 patients, multivariate Cox analysis showed an association between tocilizumab  
219 treatment and reduced outcome (death or ICU) risk. The clearest risk reduction was detected  
220 for CRS2 stage treated-patients (estimated  $\text{PaO}_2/\text{FiO}_2 < 150$  mm Hg), and this was further  
221 confirmed by significantly decreased proportion of patients that reached the endpoint. These  
222 results concurred with another study showing reduced risk of disease escalation in treated-  
223 patients with  $\text{PaO}_2/\text{FiO}_2 < 150$  mm Hg [46].

224 Our results suggested a greater tocilizumab effect in CRS2 compared to CRS3 stage  
225 patients, supporting the view that tocilizumab increases effectiveness when delivered at  
226 earlier disease stages [45,47]. This might be explained by more severe respiratory deficiency  
227 in CRS3 compared to CRS2 patients. Effectiveness of tocilizumab in CRS3 stage is  
228 corroborated by other studies focused on severe/critical patients, showing beneficial effects of  
229 tocilizumab for patients on MV [48], or tocilizumab delivery two days after ICU admission  
230 [45]. Finally, as CRS2 patients did not require ICU admission at baseline, tocilizumab  
231 treatment could be an option for moderate/severe patients on high-flow oxygen supply.

232 When global patient population was considered, three models of regression analysis  
233 showed that tocilizumab was associated with a reduced risk of the composite outcome, after  
234 accounting for CRS stage classification as a confounding factor together with patient age, sex

235 and other treatments. In addition, multivariate Cox regression analysis showed significantly  
236 lowered risk in the case that mortality alone was the outcome.

237 Adjustment for CRS stages was decisive for the estimated therapeutic effect of tocilizumab  
238 in all patients, since after excluding the CRS stage classification, as confounding variable,  
239 tocilizumab benefit was no longer evidenced.

240 Preliminary data from clinical trials COVACTA and EMPACTA (19-20) that included  
241 broad ranged patient populations, showed that tocilizumab was not as efficacious as in  
242 observational studies that focused on advanced disease stages. The COVACTA study did not  
243 meet the primary outcome, as tocilizumab did not reduce clinical worsening or mortality. The  
244 wide-ranged severity of the patients could be a drawback, considering that the inefficacy of  
245 tocilizumab in mild/moderate severity patients might have obscured relevant therapeutic  
246 effects [44]. The EMPACTA trial [50] showed reduced risk of MV or death, but not of  
247 mortality alone in tocilizumab-treated patients.

248 On the basis of our findings, we believe that future clinical studies could draw more  
249 accurate conclusions by considering disease stage classification and including it as a  
250 confounding factor in regression analyses.

251 Overall, using a single tocilizumab appears to be safe for the patients and does not increase  
252 secondary infections, as shown by us and other studies [17,45,50]. Perhaps a second  
253 consecutive tocilizumab delivery might result in increased secondary infections [12].

254 Our study has the following limitations. First, the study was performed in one hospital and  
255 was not randomized as tocilizumab treatment was prioritized for worsening patients within  
256 the same CRS stage. Second, CRS3 stage patient population did not get the support of MV  
257 due to the near collapse conditions in Spain at the time of the study. Third, our study was not  
258 blinded and therefore a bias for ICU admission could favor untreated patients; this limitation

259 was minimized as analysis of overall hospital mortality as an endpoint showed benefit after  
260 tocilizumab treatment.

261 The strengths of this study include the newly applied patient classification in CRS stages.  
262 This later point is crucial since previous studies mostly found no tocilizumab effect when  
263 considering patients of wide range disease severity. Several analyses were performed, with  
264 consistent results across the models. Oxygen supplementation was uniform especially for the  
265 CRS2 stage, as the vast majority of the patients were managed on the floor (*i.e.* not in the  
266 ICU) on steady FiO<sub>2</sub>, avoiding the bias of oxygen supplementation in influencing the  
267 outcome. Finally, although differences in tocilizumab efficacy have been suggested to depend  
268 on disease stage, here we show this in a single study that encompassed three disease stages.

## 269 **Conclusions**

270 Tocilizumab shows variable efficacy, depending on three COVID-19 clinical respiratory  
271 severity (CRS) stages. Treatment had no apparent benefit in CRS1 patients, but was  
272 associated with a remarkable benefit in CRS2 patients, suggesting that tocilizumab could  
273 target stages that did not require ICU care. These findings could contribute to define the  
274 optimal point for treatment initiation. In general terms, our results indicate that the CRS-  
275 associated efficacy of tocilizumab could eventually hinder evaluation of its therapeutic effect,  
276 and suggest the possibility to consider CRS patient classification as a confounding factor in  
277 analyzing the efficacy of tocilizumab. These conclusions could assist in designing and/or  
278 interpreting randomized clinical trials.



## **Acknowledgements**

We thank Catherine Mark for editorial assistance. This work was partially supported by grants from the Fondo de Investigación de la Seguridad Social-Instituto de Salud Carlos III (PI18/01726), Spain. Programa de Actividades de I+D de la Comunidad de Madrid en Biomedicina (B2017/BMD-3804), Madrid, Spain. Instituto de Salud Carlos III CIBER Enfermedades hepáticas y Digestivas, Spain. Agencia Estatal de Investigación. SAF2016-80803-R. Medicina individualizada traslacional, en inflamación y cáncer. Comunidad de Madrid. B2017/BMD-3804, Spain (to: MAM, CMA and DB). GR holds Juan de la Cierva grant (Ministerio de Ciencia e Innovación).

## REFERENCES

- 279 1. Wu JT, Leung K, Bushman M, Kishore N, Niehus R, de Salazar PM, et al. Estimating  
280 clinical severity of COVID-19 from the transmission dynamics in Wuhan, China. *Nat*  
281 *Med.* 2020;26: 506–510. doi:10.1038/s41591-020-0822-7
- 282 2. Zhou M, Zhang X, Qu J. Coronavirus disease 2019 (COVID-19): a clinical update.  
283 *Front Med.* 2020;2019. doi:10.1007/s11684-020-0767-8
- 284 3. Zhou F, Yu T, Du R, Fan G, Liu Y, Liu Z, et al. Clinical course and risk factors for  
285 mortality of adult inpatients with COVID-19 in Wuhan, China: a retrospective cohort  
286 study. *Lancet.* 2020;395: 1054–1062. doi:10.1016/S0140-6736(20)30566-3
- 287 4. Hue S, Beldi-Ferchiou A, Bendib I, Surenaud M, Fourati S, Frapard T, et al.  
288 Uncontrolled Innate and Impaired Adaptive Immune Responses in Patients with  
289 COVID-19 Acute Respiratory Distress Syndrome. *Am J Respir Crit Care Med.*  
290 2020;202: 1509–1519. doi:10.1164/rccm.202005-1885oc
- 291 5. Mehta P, McAuley DF, Brown M, Sanchez E, Tattersall RS, Manson JJ. COVID-19:  
292 consider cytokine storm syndromes and immunosuppression. *Lancet.* 2020;395: 1033–  
293 1034. doi:10.1016/S0140-6736(20)30628-0
- 294 6. Henderson LA, Canna SW, Schulert GS, Volpi S, Lee PY, Kernan KF, et al. On the  
295 Alert for Cytokine Storm: Immunopathology in COVID-19. *Arthritis Rheumatol.*  
296 2020;72: 1059–1063. doi:10.1002/art.41285
- 297 7. Michot JM, Albiges L, Chaput N, Saada V, Pommeret F, Griscelli F, et al.  
298 Tocilizumab, an anti-IL-6 receptor antibody, to treat COVID-19-related respiratory  
299 failure: a case report. *Ann Oncol.* 2020;31: 961–964.  
300 doi:10.1016/j.annonc.2020.03.300
- 301 8. Kaneko Y, Kato M, Tanaka Y, Inoo M, Kobayashi-Haraoka H, Amano K, et al.  
302 Tocilizumab discontinuation after attaining remission in patients with rheumatoid

- 303 arthritis who were treated with tocilizumab alone or in combination with methotrexate:  
304 Results from a prospective randomised controlled study (the second year of the  
305 SURPRIS. *Ann Rheum Dis.* 2018;77: 1268–1275. doi:10.1136/annrheumdis-2018-  
306 213416
- 307 9. Le RQ, Li L, Yuan W, Shord SS, Nie L, Habtemariam BA, et al. FDA Approval  
308 Summary: Tocilizumab for Treatment of Chimeric Antigen Receptor T Cell-Induced  
309 Severe or Life-Threatening Cytokine Release Syndrome. *Oncologist.* 2018;23: 943–  
310 947. doi:10.1634/theoncologist.2018-0028
- 311 10. Zhang C, Wu Z, Li JW, Zhao H, Wang GQ. The cytokine release syndrome (CRS) of  
312 severe COVID-19 and Interleukin-6 receptor (IL-6R) antagonist Tocilizumab may be  
313 the key to reduce the mortality. *Int J Antimicrob Agents.* 2020; 105954.  
314 doi:10.1016/j.ijantimicag.2020.105954
- 315 11. Alzghari SK, Acuña VS. Supportive Treatment with Tocilizumab for COVID-19: A  
316 Systematic Review. *J Clin Virol.* 2020;127: 104380. doi:10.1016/j.jcv.2020.104380
- 317 12. Biran N, Ip A, Ahn J, Go RC, Wang S, Mathura S, et al. Tocilizumab among patients  
318 with COVID-19 in the intensive care unit: a multicentre observational study. *Lancet*  
319 *Rheumatol.* 2020;2: e603–e612. doi:10.1016/S2665-9913(20)30277-0
- 320 13. Jordan SC, Zakowski P, Tran HP, Smith EA, Gaultier C, Marks G, et al.  
321 Compassionate Use of Tocilizumab for Treatment of SARS-CoV-2 Pneumonia. *Clin*  
322 *Infect Dis.* 2020; 1–6. doi:10.1093/cid/ciaa812
- 323 14. Martínez-Sanz J, Muriel A, Ron R, Herrera S, Pérez-Molina JA, Moreno S, et al.  
324 Effects of tocilizumab on mortality in hospitalized patients with COVID-19: a  
325 multicentre cohort study. *Clin Microbiol Infect.* 2020. doi:10.1016/j.cmi.2020.09.021
- 326 15. Rodríguez-Baño J, Pachón J, Carratalà J, Ryan P, Jarrín I, Yllescas M, et al. Treatment  
327 with tocilizumab or corticosteroids for COVID-19 patients with hyperinflammatory

- 328 state: a multicentre cohort study (SAM-COVID-19). *Clin Microbiol Infect.* 2020.  
329 doi:10.1016/j.cmi.2020.08.010
- 330 16. Salvarani C, Dolci G, Massari M, Merlo DF, Cavuto S, Savoldi L, et al. Effect of  
331 Tocilizumab vs Standard Care on Clinical Worsening in Patients Hospitalized with  
332 COVID-19 Pneumonia: A Randomized Clinical Trial. *JAMA Intern Med.* 2020.  
333 doi:10.1001/jamainternmed.2020.6615
- 334 17. Hermine O, Mariette X, Tharaux PL, Resche-Rigon M, Porcher R, Ravaud P. Effect of  
335 Tocilizumab vs Usual Care in Adults Hospitalized with COVID-19 and Moderate or  
336 Severe Pneumonia: A Randomized Clinical Trial. *JAMA Intern Med.* 2020; 1–9.  
337 doi:10.1001/jamainternmed.2020.6820
- 338 18. Stone JH, Frigault MJ, Serling-Boyd NJ, Fernandes AD, Harvey L, Foulkes AS, et al.  
339 Efficacy of Tocilizumab in Patients Hospitalized with Covid-19. *N Engl J Med.* 2020;  
340 1–12. doi:10.1056/nejmoa2028836
- 341 19. Leaf DE, Gupta S, Wang W. Tocilizumab in Covid-19. *N Engl J Med.* 2021;384: 86–  
342 87. doi:DOI: 10.1056/NEJMc2032911
- 343 20. Parr JB. Time to Reassess Tocilizumab’s Role in COVID-19 Pneumonia. *JAMA Intern*  
344 *Med.* 2020; 1–4. doi:10.1001/jamainternmed.2020.6557
- 345 21. Huang E, Jordan SC. Tocilizumab for Covid-19 — The Ongoing Search for Effective  
346 Therapies. *N Engl J Med.* 2020;383: 2387–2388. doi:10.1056/nejme2032071
- 347 22. Rosas I, Bräu N, Waters M, Go R, Hunter B, Bhagani S, Skiest D, Aziz M, Cooper N,  
348 Douglas I, Savic S, Youngstein T, Del Sorbo L, Cubillo Gracian A, De La Zerda D,  
349 Ustianowski A, Bao M, Dimonaco S, Graham E, Matharu B, Spotswood H, Tsai L  
350 Malhotra A PJ. Tocilizumab in Hospitalized Patients With COVID-19 Pneumonia.  
351 *MedRxiv:20183442* [Preprint]. 2020 [cited 2021 February 21]. Available from:  
352 doi:<https://doi.org/10.1101/2020.08.27.20183442>

- 353 23. Salama C, Han J, Yau L, Reiss WG, Kramer B, Neidhart JD, et al. Tocilizumab in  
354 Patients Hospitalized with Covid-19 Pneumonia. *N Engl J Med*. 2020.  
355 doi:10.1056/nejmoa2030340
- 356 24. Anthony C. Gordon, Paul R. Mouncey, Farah Al-Beidh, Kathryn M. Rowan, Alistair  
357 D. Nichol, Yaseen M. Arabi, Djillali Annane, Abi Beane, Wilma van Bentum-Puijk,  
358 Lindsay R. Berry, Zahra Bhimani, Marc J.M. Bonten, Charlotte A. Bradbury, Frank M.  
359 Brunkhorst, A LPGD. Interleukin-6 Receptor Antagonists in Critically Ill Patients with  
360 Covid-19 – Preliminary report. medRxiv:21249390 [preprint]. 2021 [cited 2021  
361 February 21]. Available from: <https://doi.org/10.1101/2021.01.07.21249390>
- 362 25. RECOVERY Collaborative Group. Tocilizumab in patients admitted to hospital with  
363 COVID-19 (RECOVERY): preliminary results of a randomised, controlled, open-label,  
364 platform trial. medRxiv:21249258 [preprint]. 2021 [cited 2021 February 21]. Available  
365 from: <https://doi.org/10.1101/2021.02.11.21249258>
- 366 26. Kim MS, An MH, Kim WJ, Hwang TH. Comparative efficacy and safety of  
367 pharmacological interventions for the treatment of COVID-19: A systematic review  
368 and network meta-analysis. *PLoS Med*. 2020;17: 1–28.  
369 doi:10.1371/journal.pmed.1003501
- 370 27. Characteristics IE. Diagnosis and Treatment Protocol for Novel Coronavirus  
371 Pneumonia (Trial Version 6, Revised). 2019.
- 372 28. Marshall JC, Murthy S, Diaz J, Adhikari N, Angus DC, Arabi YM, et al. A minimal  
373 common outcome measure set for COVID-19 clinical research. *Lancet Infect Dis*.  
374 2020;20: e192–e197. doi:10.1016/S1473-3099(20)30483-7
- 375 29. Chen W-L, Lin W-T, Kung S-C, Lai C-C, Chao C-M. The Value of Oxygenation  
376 Saturation Index in Predicting the Outcomes of Patients with Acute Respiratory  
377 Distress Syndrome. *J Clin Med*. 2018;7: 205. doi:10.3390/jcm7080205

- 378 30. Wang D, Hu B, Hu C, Zhu F, Liu X, Zhang J, et al. Clinical Characteristics of 138  
379 Hospitalized Patients with 2019 Novel Coronavirus-Infected Pneumonia in Wuhan,  
380 China. *JAMA - J Am Med Assoc.* 2020;323: 1061–1069. doi:10.1001/jama.2020.1585
- 381 31. Goonasekera C, Peiris P, Oswald L, Sheikh A. SpO<sub>2</sub>: How Low is Too Low? *J Med*  
382 *Physiol Ther.* 2017;1: 105–107. Available: [https://www.omicsonline.org/open-](https://www.omicsonline.org/open-access/spo2-how-low-is-too-low.php?aid=93121)  
383 [access/spo2-how-low-is-too-low.php?aid=93121](https://www.omicsonline.org/open-access/spo2-how-low-is-too-low.php?aid=93121)
- 384 32. Roppolo LP, Wigginton JG. Preventing severe hypoxia during emergent intubation: Is  
385 nasopharyngeal oxygenation the answer? *Crit Care.* 2010;14. doi:10.1186/cc9197
- 386 33. Griesdale DEG, Bosma TL, Kurth T, Isac G, Chittock DR. Complications of  
387 endotracheal intubation in the critically ill. *Intensive Care Med.* 2008;34: 1835–1842.  
388 doi:10.1007/s00134-008-1205-6
- 389 34. Hernan MA, Robins JM (2020). *Causal Inference: What If.* Boca Raton: Chapman &  
390 Hall/CRC.
- 391 35. Angel M, Brumback B, Robins JM. Marginal Structural Models to Estimate the Causal  
392 Effect of Zidovudine on the Survival of HIV-Positive. *Epidemiology.* 2000; 561–570.
- 393 36. Fewell Z, Hern MA, Wolfe F. Controlling for time-dependent confounding using  
394 marginal structural models. *Stata J.* 2004; 402–420.
- 395 37. Somers VK, Kara T, Xie J. Progressive Hypoxia: A Pivotal Pathophysiologic  
396 Mechanism of COVID-19 Pneumonia. *Mayo Clin Proc.* 2020/09/30. 2020;95: 2339–  
397 2342. doi:10.1016/j.mayocp.2020.09.015
- 398 38. Festic E, Bansal V, Kor DJ, Gajic O. SpO<sub>2</sub>/FiO<sub>2</sub> ratio on hospital admission is an  
399 indicator of early acute respiratory distress syndrome development among patients at  
400 risk. *J Intensive Care Med.* 2015;30: 209–216. doi:10.1177/0885066613516411
- 401 39. Rice TW, Wheeler AP, Bernard GR, Hayden DL, Schoenfeld DA, Ware LB.  
402 Comparison of the SpO<sub>2</sub>/FIO<sub>2</sub> ratio and the PaO<sub>2</sub>/FIO<sub>2</sub> ratio in patients with acute

- 403 lung injury or ARDS. *Chest*. 2007;132: 410–417. doi:10.1378/chest.07-0617
- 404 40. Ranieri VM, Rubenfeld GD, Thompson BT, Ferguson ND, Caldwell E, Fan E, et al.  
405 Acute respiratory distress syndrome: The Berlin definition. *JAMA - J Am Med Assoc*.  
406 2012;307: 2526–2533. doi:10.1001/jama.2012.5669
- 407 41. Lu X, Jiang L, Chen T, Wang Y, Zhang B, Hong Y, et al. Continuously available ratio  
408 of SpO<sub>2</sub>/FiO<sub>2</sub> serves as a noninvasive prognostic marker for intensive care patients  
409 with COVID-19. *Respir Res*. 2020;21: 1–4. doi:10.1186/s12931-020-01455-4
- 410 42. Xie J, Covassin N, Fan Z, Singh P, Gao W, Li G, et al. Association Between  
411 Hypoxemia and Mortality in Patients With COVID-19. *Mayo Clin Proc*. 2020;95:  
412 1138–1147. doi:10.1016/j.mayocp.2020.04.006
- 413 43. Parr JB. Time to Reassess Tocilizumab’s Role in COVID-19 Pneumonia. *JAMA Intern*  
414 *Med*. 2020; 1–4. doi:10.1001/jamainternmed.2020.6557
- 415 44. Furlow B. COVACTA trial raises questions about tocilizumab’s benefit in COVID-19.  
416 *Lancet Rheumatol*. 2020;2: e592. doi:10.1016/s2665-9913(20)30313-1
- 417 45. Gupta S, Wang W, Hayek SS, Chan L, Mathews KS, Melamed ML, et al. Association  
418 Between Early Treatment With Tocilizumab and Mortality Among Critically Ill  
419 Patients With COVID-19. *JAMA Intern Med*. 2020;02115: 1–11.  
420 doi:10.1001/jamainternmed.2020.6252
- 421 46. Guaraldi G, Meschiari M, Cozzi-Lepri A, Milic J, Tonelli R, Menozzi M, et al.  
422 Tocilizumab in patients with severe COVID-19: a retrospective cohort study. *Lancet*  
423 *Rheumatol*. 2020;2: e474–e484. doi:10.1016/S2665-9913(20)30173-9
- 424 47. Price CC, Altice FL, Shyr Y, Koff A, Pischel L, Goshua G, et al. Tocilizumab  
425 Treatment for Cytokine Release Syndrome in Hospitalized Patients With Coronavirus  
426 Disease 2019: Survival and Clinical Outcomes. *Chest*. 2020;158: 1397–1408.  
427 doi:10.1016/j.chest.2020.06.006

- 428 48. Somers EC, Eschenauer GA, Troost JP, Golob JL, Gandhi TN, Wang L, et al.  
429 Tocilizumab for Treatment of Mechanically Ventilated Patients With COVID-19. Clin  
430 Infect Dis. 2020. doi:10.1093/cid/ciaa954
- 431 49. F Hoffman-La Roche Ltd. Roche provides an update on the phase III COVACTA trial  
432 of Actemra/RoActemra in hospitalised patients with severe COVID-19 associated  
433 pneumonia. Published July 29, 2020. Accessed September 19, 2020.  
434 <https://www.roche.com/investors/>.
- 435 50. Salama C, Han J, Yau L, Reiss W, Kramer B, Neidhart J, Criner G, Kaplan-Lewis E,  
436 Baden R, Pandit L, Cameron M, Garcia-Diaz J, Chávez V, Mekebeb-Reuter M,  
437 Ferdinando □; Menezes L, Shah R, González-Lara M, Assman B, Freedman J, Mohan  
438 S, San □; Associates J KL. Tocilizumab in nonventilated patients hospitalized with  
439 Covid-19 pneumonia. doi:<https://doi.org/10.1101/2020.10.21.20210203>
- 440



**Table 1. Descriptive characteristics of the patient population**

	Tocilizumab	No tocilizumab	<b>p</b>
N (patients)	167	327	
Age (years), mean (SD)*	66.24 (11.38)	66.93 (15.76)	0.62
Gender (male) %	67.1	55	0.012
Days between onset symptoms and admission, mean (SD)*	7.29 (4.88)	6.74 (5.62)	0.262
Onset symptoms (% of patients)			
Fever	91.2	85.3	0.078
Cough	77.4	78.1	0.86
Throat pain	5.8	7.7	0.46
Dyspnea	72.6	65.2	0.12
Vomiting	9.8	13	0.33
Diarrhea	28.7	24	0.30
Comorbidities (% of patients)			
Cancer	6.5	10.5	0.17
Diabetes	27.4	23.8	0.42
Cardiac or cerebrovascular disease	55.7	56.8	0.83
Chronic hepatitis	3.8	3.7	0.95
COPD	5.2	5.7	0.81
Chronic kidney disease	7.1	9.8	0.34
Neurological disease	8.3	12.2	0.22
Other treatments (% of patients)			
Interferon	53.3	27.5	<0.001
CRS (% of patients)			
1	26.9	88.6	
2	53.9	8	
3	19.2	3.4	

Pearson's chi-squared test. \* Mann-Whitney U test

**Table 2. Baseline patient characteristics of CRS stages.**

Characteristic	No.	CRS 1	No.	CRS 2	No.	CRS 3	p value
No.	334		116	105	44	37	
Age, mean (StDev)	334	65.7 (15.3)	116	68.6 (12.7)	44	68.9 (11.1)	*p = 0.1053
Male, No./No. (%)	333	185/333 (55.6%)	116	76/116 (65.5%)	43	29/43 (67.4%)	
Female, No./No. (%)	333	148/333 (44.4%)	116	40/116 (34.5%)	43	14/43 (32.6%)	**p = 0.085
<b>Comorbidities,</b>							
<b>No./No. (%)</b>							
• Cancer	256	25/256 (9.8%)	101	9/101 (8.9%)	33	0/33 (0.0%)	**p = 0.17
• Diabetes	266	68/266 (25.6%)	102	23/102 (22.5%)	35	10/35 (28.6%)	**p = 0.74
• Cardiovascular disease	269	153/269 (56.9%)	102	54/102 (52.9%)	35	21/35 (60.0%)	**p = 0.71
• Chronic hepatitis	261	12/261 (4.6%)	100	1/100 (1.0%)	35	2/35 (5.7%)	**p = 0.23
• EPOC	262	13/262 (5.0%)	100	8/100 (8.0%)	35	0/35 (0.0%)	**p = 0.18
• Chronic kidney disease	262	21/262 (8.0%)	101	10/101 (9.9%)	35	3/35 (8.6%)	**p = 0.85
• Neurological disease	264	29/264 (11.0%)	100	10/100 (10.0%)	35	2/35 (5.7%)	**p = 0.62
• Immunodeficiency	255	20/255 (7.8%)	98	11/98 (11.2%)	33	0/33 (0/0%)	**p = 0.12
SpO <sub>2</sub> limits	334	≥93	116	≥89.5 and <94	44	≤83,5	
FiO <sub>2</sub>	334	0.35 ≤		0.5		0.5 or MV	
SpO <sub>2</sub> :FiO <sub>2</sub> , median (IQR)	334	>265	116	>179 and <188	44	<167	
PaO <sub>2</sub> :FiO <sub>2</sub> , median (IQR)	334	>240	116	>136 and <148	44	<123	

CRP	mg/ml, median	333	66.05	116	125 (62.4,	43	141 (69.5,	***p	<
(IQR)			(27.3,		176)		204)	0.001	
			131.6)						
LDH	U/l, median	333	269	116	339 (270,	43	397 (291,	***p	<
(IQR)			(210,		403)		486)	0.001	
			334)						
Lymphocytes	10 <sup>3</sup> /μL, median (IQR)	333	0.99	116	0.77	43	0.7 (0.59,	***p	<
			(0.715,		(0.58,		1)	0.001	
			1.32)		1.02)				

\*ANOVA, \*\*Pearson's Chi-squared test, \*\*\*Kruskal Wallis. PaO<sub>2</sub>:FiO<sub>2</sub> ratio was estimated from SpO<sub>2</sub>:FiO<sub>2</sub> (ref. 32).

**Table 3.** Multivariate regression models to estimate the effect of tocilizumab adjusted for the CRS stages.

	<b>Model 1</b>				<b>Model 2</b>				<b>Model 3</b>			
	HR	[95% CI]		p	HR	[95% CI]		P	HR	[95% CI]		p
Tocilizumab	<b>0.42</b>	<b>0.26</b>	<b>0.66</b>	<0.001	<b>0.22</b>	<b>0.09</b>	<b>0.59</b>	0.002	<b>0.17</b>	<b>0.06</b>	<b>0.47</b>	<0.001
Age (years)	1.03	1.01	1.04	<0.001	1.02	1.00	1.04	0.023	1.03	1.00	1.05	0.020
Sex (male)	1.26	0.90	1.76	0.183	1.19	0.75	1.91	0.46	1.53	0.91	2.59	0.107
CRS	-				-				-			
2	2.80	1.75	4.47	<0.001	8.45	4.40	16.22	<0.001	10.42	5.23	20.76	<0.001
3	12.75	7.65	21.23	<0.001	23.14	12.83	41.74	<0.001	27.23	1.47	64.66	<0.001
Other treatments:												
Interferon	1.87	1.33	2.62	0.001	1.21	0.75	1.95	0.428	1.55	0.91	2.64	0.108

Model 1 Cox proportional regression

Model 2 Unweighted pooled logistic regression

Model 3 Marginal structural model. Pooled logistic regression weighted by IPWT

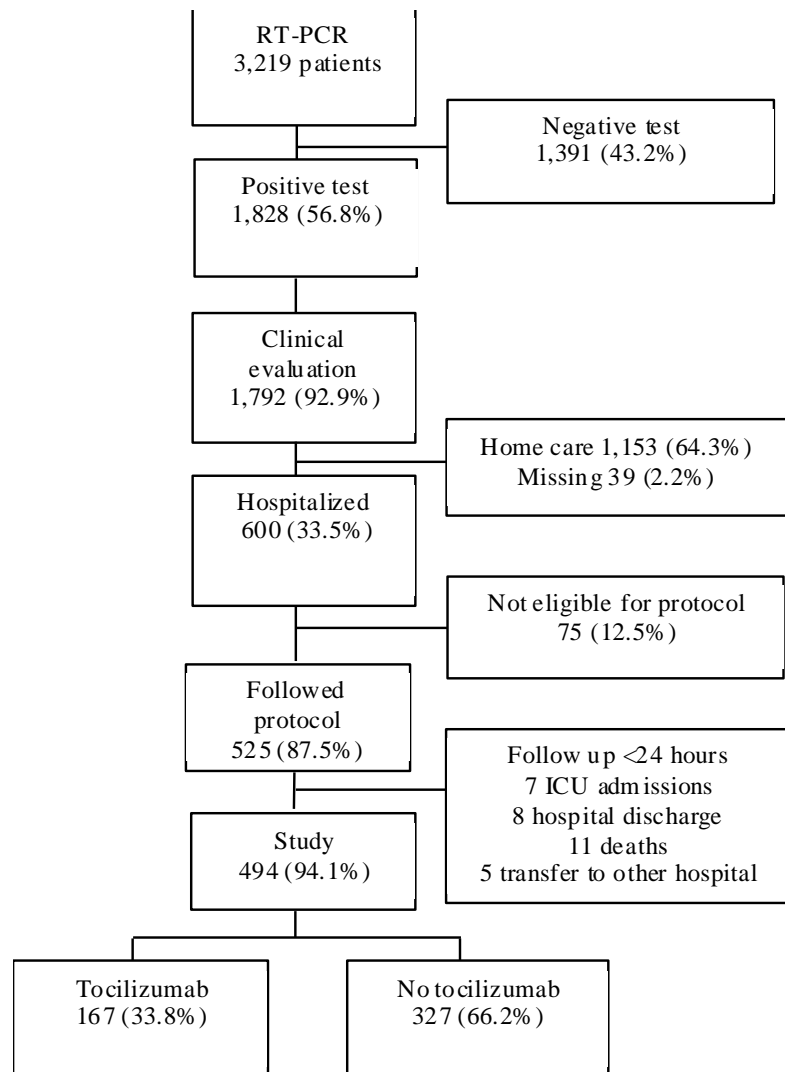
## **Figure legends.**

**Figure 1.** Selection of patient groups for tocilizumab treatment.

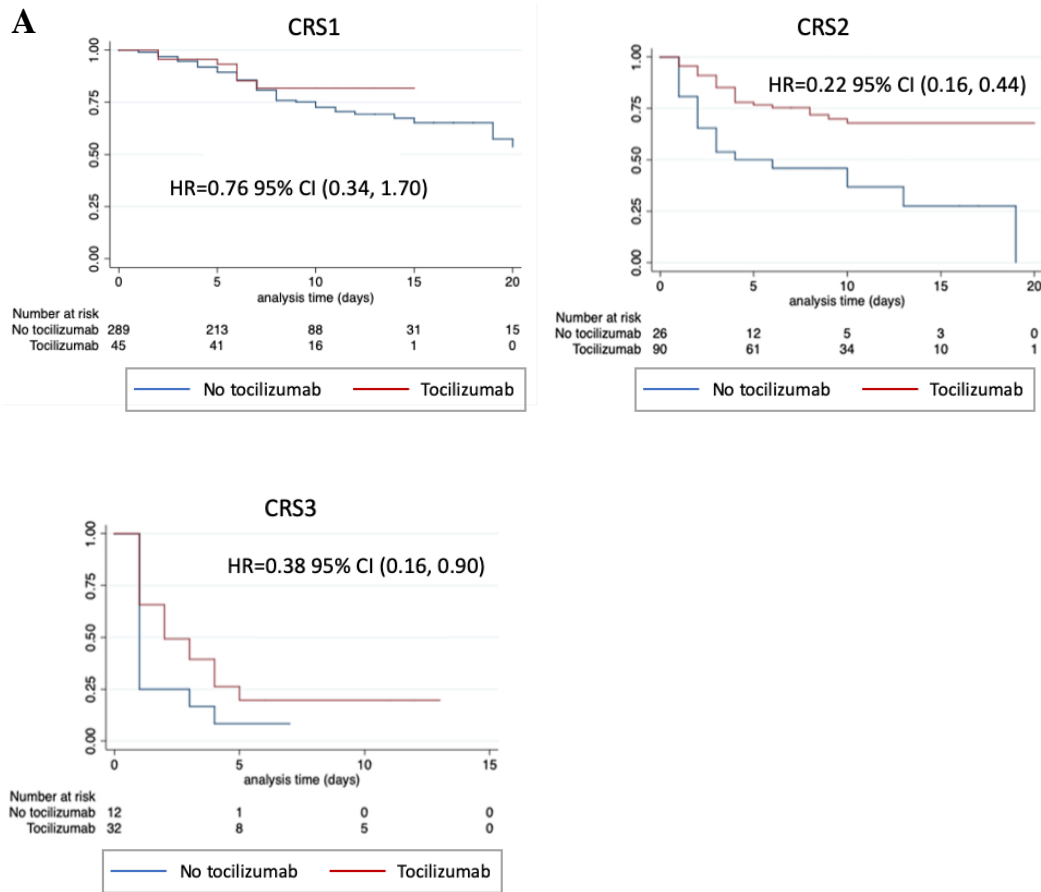
**Figure 2. (A)** Kaplan-Meier estimation of clinical improvement in CRS1, CRS2 and CRS3 patients. Multivariate Cox regression analysis;  $p = 0.334$  (CRS1);  $p < 0.001$  (CRS2);  $p = 0.018$  (CRS3). **(B)** Numbers and proportions of tocilizumab treated and untreated patients that reached the outcome; Pearson's chi-square test.

**Figure 3.** Increased probability of survival after tocilizumab treatment. Survival corresponds to improvement of the end event defined as death or ICU admission. HR values correspond to multivariate Cox regression analysis. **(A)** Adjusted for age, sex, comorbidities, other treatments and CRS stages, as in Table 3 (model 1); **(B)** Adjusted as in (A) but not for CRS stages.

**Figure 1**



**Figure 2**



**B**

Total (n = 494)	Tocilizumab (n = 167)		No tocilizumab (n = 327)		p value
	n	Outcome	n	Outcome	
CRS1 (n = 334)	45	7 (15.6%)	289	68 (23.5%)	0.233
CRS2 (n = 116)	90	25 (27.8%)	26	17 (65.4%)	<0.001
CRS3 (n = 44)	32	25 (78.1%)	12	11 (91.6%)	0.413

Pearson's chi-square test

**Figure 3**

