

High Initial Titres of Anti-Spike Antibodies following SARS-CoV-2 Infection is Associated with Faster Decay Rates at Four Months Follow-Up

Vidya Menon, MD, FACP*¹, Masood A Shariff MD¹, Victor Perez Gutierrez MD¹, Juan M Carreño PhD², Bo Yu MD¹, Muzamil Jawed DO¹, Marcia Gossai MD¹, Elisenda Valdez MD¹, Anjana Pillai MD¹, Usha Venugopal MD¹, Moiz Kasubhai MD¹, Vihren Dimitrov MD¹, Florian Krammer PhD²

Author affiliations:

¹Department of Medicine, NYC Health + Hospitals/Lincoln, The Bronx, NY

²Department of Microbiology, Icahn School of Medicine at Mount Sinai, New York, NY

Keywords: SARS-CoV-2 Infection, anti-spike antibody, decay rate, COVID-19

Running Title: Decay Rates following SARS-CoV-2 Infection

Word count: 3396

*Corresponding Author:

Vidya Menon, MD, FACP

NYC HHC/Lincoln

234 E 149th Street

The Bronx, New York 10451

Email: menonv@nychhc.org

Phone: 718-579-5000 ext. 3485

Key Points

Question: What is the decay rate of neutralizing antibodies among SARS-CoV-2 infected healthcare workers?

Findings: In this cohort study that included 178 healthcare workers, over a 4-month period following the COVID-19 pandemic, participants had an initial rise in anti-nucleocapsid (N) and anti-spike (S) antibodies, which was followed by decay and stabilization of the titres. Significant correlation with rate of decay was noted with the symptomatic participants.

Meaning: A strong correlation is observed in the decay of anti-S antibody titres based on symptomology, thus eluding to the fact that continued recommendations for infection protection and COVID-19 vaccine campaigns are necessary.

42 **Abstract**

43 Background

44 Dynamics of humoral immune responses to SARS-CoV-2 antigens following infection suggests
45 an initial decay of antibody followed by subsequent stabilization. We aim to understand the
46 longitudinal humoral responses to SARS-CoV-2 nucleocapsid (N) protein and spike (S) protein
47 and to evaluate their correlation to clinical symptoms among healthcare workers (HCW).

48 Methods

49 In this cross-sectional longitudinal cohort study done in two phases over four months, HCW
50 underwent serial qualitative serology testing for anti-N antibody, quantitative MSH-ELISA to
51 detect Receptor Binding Domain and full-length S reactive antibodies and completed online
52 surveys about COVID-19 related symptoms and healthcare/community exposure.

53 Results

54 Anti-N antibody positivity was 27% and anti-S positivity was 28% in Phase 1. In Phase 2 anti-S
55 titres were higher in symptomatic than in asymptomatic positive subjects in Phase 1. Marginally
56 higher titers were seen in asymptomatic compared to the symptomatic positive subgroup in
57 Phase 2. A positive correlation was noted between age, number and duration of symptoms, and
58 Phase 1 anti-S antibody titre. A strong correlation was observed between Phase 1 titers and decay
59 of anti-S antibody titres between the two phases. Significant correlation with rate of decay was
60 also noted with fever, GI symptoms, and total number and duration of COVID-19 symptoms.

61 Conclusions

62 Higher initial anti-S antibody titres were associated with larger number and longer duration of
63 symptoms as well as faster decay during the two time points.

64 **Introduction**

65 In light of the unprecedented coronavirus disease 2019 (COVID-19) pandemic, understanding
66 the role of the immune system in countering the viral infection is critical not just to design
67 effective antiviral strategies but also to aid us in taking appropriate public health decisions. The
68 early publication of the viral genome led to a rapid development of many nucleic acid based
69 diagnostic assays for severe acute respiratory syndrome coronavirus 2 (SARS-CoV-2) infections.
70 While nucleic acid-based tests are widely employed in the diagnosis of acute (current) SARS-
71 CoV-2 infections, they are often limited in their clinical utility in identifying past infections or
72 assess the level of immunity to SARS-CoV-2 within the communities. Evaluation of antibody
73 responses is the other well-known modality used in a clinical setting that can detect both current,
74 and past infections and is the preferred approach for surveillance to determine the true
75 prevalence of infections. The currently available serological assays for SARS-CoV-2 target
76 either the viral nucleoprotein (N) or the spike surface protein (S) antigens. The S-protein, which
77 contains the receptor binding domain (RBD), binds to host cells via the angiotensin converting-
78 enzyme-2 (ACE2) receptor, followed by membrane fusion^{1,2}. The spike is the target of most
79 neutralizing antibodies³⁻⁵, while the N plays an important role in transcription enhancement and
80 viral assembly⁶. Studies have demonstrated that antibodies against the N and S appeared around
81 the same time - between day 8 and day 14 after the onset of symptoms with antibodies to the N
82 being more sensitive than anti S antibodies for detecting early infection⁷. Neutralizing antibodies
83 confer protective immunity and can be detected in most infected individuals 10-15 days
84 following the onset of COVID-19 symptoms and remain elevated following initial viral
85 clearance⁸⁻¹². There is compelling evidence suggesting that serological assays for anti-S
86 antibodies predict neutralizing activity, in contrast to N based assays^{11,13}.

87
88 The detailed characterization of the dynamics of humoral immune responses to the SARS-CoV-2
89 viral antigens following infection is still ongoing and early evidences suggest an initial decay of
90 antibody followed by stabilization at a certain level^{11,14-18}. These dynamics are likely driven by
91 an initial expansion of plasmablasts which produce large amounts of antibody but die off quickly
92 followed by a slower decay of antibody titres (the half-life of IgG is approximately three weeks)
93 which then transitions into a steady state level of antibody produced by long-lived plasma cells¹⁹.
94 However, it is currently unknown, if the magnitude of the initial expansion of plasmablast and
95 the associated antibody titres are correlated with the steady state level of serum antibody
96 produced by long-lived plasma cells. This is an important question since steady state antibody
97 levels may provide superior protection from re-infection^{20,21}.

98
99 Specifically, there is currently a paucity of information on the kinetics of antibody decay among
100 health care workers (HCW). It is suspected that SARS-CoV-2 infections among HCW are
101 usually asymptomatic or mildly symptomatic and frequently associated with either
102 underreporting of symptoms or heterogenous PCR and/or serologic diagnostics leading to most
103 of them going undetected or unrecognized²². A large cohort study of HCWs in the greater New
104 York City (NYC) area showed a seroprevalence of SARS-CoV-2 antibodies of 13.7%²³. Our
105 own data of anti N antibody screening among HCW at a New York City public hospital in the
106 Bronx following the first “surge” of COVID-19 in May 2020, found that SARS-CoV-2
107 seroprevalence was at 27%²⁴. Understanding the longitudinal kinetics of SARS-CoV-2 antibody
108 response and the effectiveness of commercial antibody measurement assays is crucial to

109 correctly determine infection rates, sero-prevalence and true sero-reversion rates in both infected
110 and vaccinated individuals – and to better understand protection associated with sero-positivity.

111
112 In this study, we aimed to investigate the longitudinal humoral responses to viral N and the spike
113 and to evaluate their correlation to clinical symptoms and baseline characteristics in our HCW
114 study cohort. Importantly, having access to samples during the initial antibody peak and several
115 months out, we also aimed to determine if initial high antibody levels correlated with high
116 antibody titers at steady state.

117
118 **Methods**

119 **Study setting and population**

120 The study was a cross sectional cohort study done in two phases after receiving Institutional
121 Review Board approval (IRB # 20-009, Lincoln Medical Center, Office of the Institutional
122 Review Board approved as per 45 CFR 46 & 21 CFR50,56 under a full board committee and
123 gave its approval on 4/28/2020). The Phase 1 was conducted in May/June, 2020 and the Phase 2
124 was completed August/September 2020. The cohort included HCWs who worked at the New
125 York City Public Hospital in the South Bronx and were willing to participate in both phases of
126 the study. In the Phase 1 of the study, after informed consent, participants underwent qualitative
127 serology testing (Abbott Architect SARS-CoV-2 IgG Assay, Abbott Park, IL 60064 USA)²⁵ and
128 a nasopharyngeal swab for SARS-CoV-2 (Bio-Reference Laboratories, Inc., Elmwood Park, NJ,
129 USA). They also completed an initial online survey on demographics, symptoms of COVID-19,
130 healthcare/community exposure etc. An extra sample was collected and stored at -80°C for
131 subsequent analysis. These samples were processed using a quantitative enzyme-linked

132 immunosorbent assay (ELISA) that correlates well with virus neutralization, developed by
133 Mount Sinai Health System (MSH ELISA)^{26,27}, to detect RBD and full-length spike (S) reactive
134 antibodies. Participants from Phase 1 who agreed to return for follow up serology testing (Abbott
135 and MSH ELISA) and completion of a follow-up online survey were part of Phase 2 of the study.

136

137 **Antibody assays**

138 The Abbott Architect assay uses a qualitative chemiluminescent microparticle immunoassay
139 technology targeting the N antigen of the virus with a reported sensitivity of 100% (CI 95.8–
140 100%) and specificity of 99.6% (CI 99–99.9%)²⁵. The MSH ELISA consists of an initial ELISA
141 using serum or plasma to detect specific IgG against the RBD of SARS-CoV-2 at a single
142 dilution, followed by quantitative titrations of presumptive positives in a confirmatory ELISA
143 against full length SARS-CoV-2 spike protein (S)²⁸. The positive result from the spike ELISA is
144 reported as antibody at a titre of 1:80 or higher. Test performance assessment revealed that PCR+
145 samples were 94 % positive and all negative samples returned a negative result for 100%
146 negative agreement²⁹.

147

148 **Survey**

149 The online survey was accessed by a unique identification number assigned to each participant,
150 blinded to the research team to ensure confidentiality. The survey requested information on age,
151 race/ethnicity, comorbidities, domestic/international travel and healthcare and community
152 exposure details during and prior to both phases. The first phase collected information about
153 symptoms of COVID-19 including their timing and duration in the preceding weeks of the blood
154 draw²⁴. The Phase 2 survey requested information on new comorbidities, persistent COVID-19

155 symptoms (cough, shortness of breath, anosmia, ageusia, myalgia, nausea, and/or diarrhea),
156 interim testing via antibody and/or reverse transcription polymerase chain reaction (RT -PCR) (if
157 present) and their result (positive/negative), presence of positive SARS-CoV-2 PCR results in
158 the preceding months, interim domestic/international travel and continued use of personal
159 protective equipment (PPE). The risk of exposure in the healthcare setting and community
160 exposure was determined based on CDC guidelines³⁰.

161

162 **Statistical analysis**

163 Descriptive statistics were used to summarize the baseline characteristics of the cohort and key
164 study outcome variables. Categorical variables were compared by the Chi-squared test, while
165 continuous variables were compared by a Student's t-test. The spike antibody titres were
166 described as geometric means. Correlations were calculated using standard Pearson and
167 Spearman correlation. Multiple linear regression was applied to determine the predictors of
168 log₁₀ rate of decay from Phase 1 to Phase 2 of anti-spike antibodies. A p-value of <0.05 was
169 considered significant. All statistical analyses were performed using SPSS version 27 (IBM,
170 USA).

171

172 **Results**

173 For Phase 1 of our study, 500 healthcare workers underwent both PCR and serology testing. Of
174 these, 137 were positive by for anti-N antibody (Abbott) and 142 were positive by the MSH
175 ELISA. For the second phase 178 participants from the initial cohort consented and underwent
176 evaluation with PCR, antibody assays (Abbott and MSH ELISA) and completed the online
177 follow up survey. The details of patient enrolment are described in **Figure 1**. While 46 of the 178

178 tested subjects remained positive for the anti-N antibody (Abbott), 70 were positive by the MSH
179 ELISA in the second phase. Anti -spike titres of the 5 subjects in the first phase were close to the
180 cut off for positivity. Twenty-two subjects who were negative for anti-N antibody in Phase 2 had
181 positive titres of anti-RBD and anti-spike antibodies, though lower than their Phase 1 levels.
182 Among the subjects who participated in the Phase 1 and Phase 2 study, 68 were positive in both
183 phases by the MSH ELISA, 110 were negative in both phases and 2 were positive only in Phase
184 2 with previously negative results in Phase 1.

185
186 The baseline characteristics of study participants who were positive by MSH ELISA in both
187 phases (n=68) and those who were negative in both phases (n=108) are shown in **Table 1**. The
188 mean age of the participants was 44.7 ± 12.4 years, and 63.1% were female. Overall, 30.7% of the
189 HCWs were Latinx, 29.5% were Asian, 16.5% were Black and 17.6% were White. COVID-19
190 related symptoms were present in 83.8% (57) of the subjects who were positive in both phases,
191 while only 42.6% (46) of the subgroup who had negative antibodies in both phases admitted to
192 symptoms prior to Phase 1. The duration of symptoms prior to Phase 1 was longer among the
193 symptomatic positive group (48.3% for >14 days) in comparison to symptomatic negative group
194 (17.8% for >14 days). The mean duration of symptoms to Phase 1 testing in the symptomatic
195 positive sub cohort was 47.9 ± 16.0 days. Persisting symptoms of COVID-19 were reported in 19
196 (27.9%) subjects from the cohort with positive antibodies in both phases.

197
198 **Clinical characteristics and seropositivity to spike protein in both phases**
199 **Table 2** describes the characteristics of the symptomatic and asymptomatic subjects who were
200 positive for anti-spike antibody in both phases. Baseline characteristics were comparable

201 between the groups and no difference either in the healthcare or community exposure or in the
202 location of work (ED/Inpatient/intensive care unit, OR etc.) between the two groups was
203 observed. Titres of anti-spike antibodies (geometric mean area under the curve (AUC)) were
204 higher in symptomatic subjects than in asymptomatic positive subjects (6754 AUC vs. 5803
205 AUC) in Phase 1. However, in the Phase 2 analysis we observed marginally higher titres in the
206 asymptomatic subgroup compared to the symptomatic subgroup (2383 AUC vs. 2198 AUC). The
207 rate of decay was higher in the symptomatic subgroup (geometric mean 32.96 per day) compared
208 to the asymptomatic (geometric mean 23.42 per day) suggesting delayed antibody/kinetics in the
209 asymptomatic cohort.

210

211 **Phase 1 anti-spike antibody titre and clinical correlations**

212 A Pearson's product and Spearman's rank-order correlation was run to assess the relationship
213 between cohort characteristics including age, gender, comorbidities, number of symptoms of
214 COVID-19, healthcare exposure and Phase 1 anti-spike titres in our cohort (**Figure 2**). One
215 hundred-forty-three subjects with a positive test in Phase 1 were included in the analysis. Scatter
216 plot analysis showed a monotonic relationship between the variables. A statistically significant
217 weak positive correlation was observed between age and Phase 1 anti-spike antibody titres
218 ($R=0.269$, $p<0.005$). Moderate positive correlation was present between presence of fever
219 ($R=0.319$, $p<0.005$), number of symptoms ($R=0.310$, $p<0.005$) and days of symptoms ($R=0.434$,
220 $p<0.005$) and anti-spike antibody titre; and weak positive correlation was observed with upper
221 respiratory symptoms ($R=0.278$, $p<0.005$) and gastrointestinal (GI) symptoms ($R=0.204$,
222 $p<0.05$) with anti-spike antibody titres.

223

224 **Correlation of rate of decay of anti-spike antibody titres from Phase 1 to Phase 2 and**
225 **clinical characteristics**

226 Results of Pearson correlation to assess the relationship between cohort characteristics including
227 Phase 1 anti-spike antibody titres, age, gender, comorbidities, symptoms of COVID-19, number
228 of symptoms of COVID-19, healthcare exposure and decay of anti-spike titres between the two
229 phases in our cohort is shown in **Figure 3**. A strong positive statistically significant correlation
230 was observed between Phase 1 titers and decay of anti-spike antibody titres between the two
231 phases ($R=0.898$, $p<0.000$). Medium positive correlation was observed between presence of
232 fever ($R=0.428$, $p<0.001$), GI symptoms ($R=0.340$, $p<0.011$), number of symptoms ($R=0.357$,
233 $p<0.007$), duration of symptoms ($R=0.469$, $p<0.000$) with decay of anti-spike antibody titres
234 between the two phases respectively.

235
236 A pairwise comparison was performed between rate of decay of anti-spike antibody titres and
237 patient characteristics (**Figure 4**). Rate of decay by gender was comparable (male; 30.73
238 AUC/day vs. female; 34.68 AUC/day, $p=0.413$). Asian (86.0 AUC/day) race showed higher rate
239 of decay compared with White (7.2 AUC/day) and Black (19.61 AUC/day) individuals; while
240 Latinx (47.28 AUC/day) race had higher rate of decay compared with White (7.2 AUC/day)
241 individuals. Subjects with fever had a higher rate of decay than those who did not report fever
242 (53.08 AUC/day vs. 16.14 AUC/day, $p=0.002$). Similarly subjects with GI symptoms had a
243 higher rate of decay than those without (55.81 AUC/day vs. 21.94 AUC/day, $p=0.019$). Subjects
244 with symptoms restricted to less than seven days demonstrated a lower decay rate compared with
245 symptomatic subjects over 7-14 days (13.60 AUC/day vs. 36.12 AUC/day, $p=0.046$) and when
246 compared with symptomatic subjects with more than 14 days (13.60 AUC/day vs. 59.72

247 AUC/day, $p=0.001$). This finding was statistically significant. No difference was found when
248 degree of exposure (High/Moderate: 28.18 AUC/day vs. Mild: 34.78 AUC/day, $p=0.395$) or job
249 role (physician: 29.57 AUC/day vs. nurse: 53.59 AUC/day vs. Other: 26.83 AUC/day; $p=0.361$)
250 was compared to rate of decay.

251

252 **Predictors of rate of decay from Phase 1 to Phase 2 of anti-spike antibodies**

253 Multiple linear regression analysis to predict the rate of decay with respect to age, Bacillus
254 Calmette Guerin vaccination, number of symptoms, and Phase 1 (\log_{10}) anti-spike antibody
255 titres is shown in **Table 3**. On the basis of a linear regression model that included the participants
256 age, history of BCG vaccination, total number of COVID-19 symptoms and the Phase 1
257 concentration of \log_{10} spike antibody titres, the estimated change (decay) was 23.6 AUC/day
258 when age was centred at median (42.6 years), there was positive history of BCG vaccination, the
259 total number of COVID-19 symptoms were centred at a median of 4, and the geometric mean of
260 the \log_{10} spike antibody titre was 3.78.

261

262 **Discussion**

263 With the COVID-19 pandemic showing no signs of abating, healthcare workers at the epicentre
264 are at risk of infection due to occupational exposure as well as community exposure. Sero-
265 surveillance is the foundation for determining the scale and rate of exposures. With a multitude
266 of serological assays getting emergency use approval from FDA, interpretation of the results of
267 these assays and their clinical significance remains challenging. It is critical to understand the
268 timing of the antibody response for acute interpretation. Confidence in analytical specificity of
269 the assay is a critical requirement in measurement of the specific antibody responses. Recent

270 studies have confirmed that anti spike titres especially anti-RBD titres can serve as surrogates for
271 virus neutralization^{31,32}. The Abbott SARS-CoV-2 IgG assay that targets antibodies to the
272 nucleoprotein has a reported specificity and sensitivity of greater than 99% at 14 days or more
273 following symptom onset and these measurements are not indicative or correlated to virus
274 neutralization titres³³. In comparison, the MSH ELISA targets the full-length S protein including
275 RBD, a major target for neutralizing antibodies and has demonstrated excellent correlation to
276 virus neutralization^{11,26}. Longitudinal measurements of antibody levels have revealed that anti-N
277 and anti S IgG antibodies continue to increase until the third week post symptoms and an
278 approach that combines the detection of both of these antibodies would precisely detect almost
279 100% of all infectious exposures³⁴. In our study, the mean number of days after symptoms to
280 testing in Phase 1 was 47 days suggesting a higher likelihood of accuracy of the utilized assay.

281
282 Longitudinal blood sampling among HCWs working at a public hospital in the epicentre of the
283 pandemic in NYC allowed for analysis of kinetics of anti-S and anti-N antibody responses. At
284 two months after the first surge of infections, anti-N antibodies were detected in 27% and anti-S
285 antibodies in 28% of participating HCWs. After an interval of four months, it is not surprising to
286 note that among the participants who returned, 26% remained positive for anti N antibodies,
287 while 31% of the previously anti-N antibody positive subjects tested negative in phase 2. On the
288 other hand, a similar analysis of the anti-S antibodies levels, confirmed that all the previously
289 positive retested subjects continued to remain positive, albeit with lower titres.

290
291 COVID-19 related symptoms were significantly associated with positive anti-spike antibodies in
292 both phases, with a similar association with longer duration (>14 days) of symptoms. Previous

293 studies have demonstrated a lower level of IgG response among patients without symptoms or
294 with mild symptoms compared to those with severe and critical disease^{35,36}. A comparison of
295 symptomatic versus asymptomatic subjects who tested positive for anti-spike antibodies in both
296 phases, confirmed that the rate of decay of anti-spike antibody titres were faster in the
297 symptomatic cohort than the asymptomatic subjects, which was seen also in the anti-N antibody
298 kinetics. However, we observed a faster decay in this group with a lower titre of anti-spike
299 antibodies in Phase 2 compared to the asymptomatic cohort (though the difference was not
300 statistically significant). This could additionally be supported by the finding of fever and GI
301 symptoms contributing to faster decay. Similar results of decreasing neutralizing antibody titre in
302 symptomatic than asymptomatic patients were observed by Choe *et al.*³⁷

303
304 Positive correlations for age, presence of fever, upper respiratory symptoms, GI symptoms, total
305 number and duration of symptoms was observed with increased levels of anti-spike titres at
306 Phase 1. Similar results of neutralizing antibody titres were also observed by
307 Boonyaratanakornkit *et al.* wherein they showed higher levels of neutralizing antibody titres
308 were significantly associated with male gender, older adults, higher disease severity and shorter
309 interval from recovery³⁸. Based on a linear regression model with age centred at median (42.6
310 years), positive history of BCG vaccination, the total number of COVID-19 symptoms centred at
311 a median of 4, and the geometric mean of the log₁₀ anti-spike antibody titre at 3.78, we observed
312 that the rate of decay of these antibody titres was 23.6 AUC/day. Evaluation of other
313 characteristics with rate of decay between Phase 1 and Phase 2 showed a faster reduction in titres
314 in Asian participants and in those with fever and GI symptoms. A slower decrease was noted

315 among patients with shorter duration (<7 days) of symptoms, with no other significant
316 correlation noted with any other baseline demographics or clinical characteristics.

317 As described above, higher antibody titers are associated with a larger number of symptoms,
318 longer duration of symptoms and – as described by others as well – disease severity in general.
319 We also found that higher initial antibody titers were associated with faster antibody decay
320 during the two time points. Initial antibody responses are driven by short lived plasmablasts,
321 which decay after a few days after producing massive amounts of antibody. IgG has a relatively
322 long half-life of approximately three weeks, but decay is inevitable since the plasmablasts
323 initially producing it disappear. Usually, titers then drop until they reach relatively stable levels
324 of antibody which are maintained by long-lived plasma cells in the bone marrow¹⁹. The two time
325 points described in this study represent the initial peak response and likely the stable level after
326 the initial decay. We found that individuals with higher initial titers had a faster decay rate
327 during the observation period meaning the difference between peak and stable, long-lived
328 antibody levels were larger. This indicates that there is likely no direct correlation between the
329 magnitude of the initial expansion of plasmablasts and the number of long-lived plasma cells that
330 migrate to the bone marrow.

331 Our study has the following limitations: First being a single center study with a small
332 convenience sampling that included a smaller number of participants in Phase 2 of the study.
333 Following the pandemic, the HCWs who volunteered from around the country were transferred
334 back and lost to follow-up, which did decrease the overall sample size, but the rates of positive
335 and negative results remained proportional. Second, the likelihood of a recall bias in the
336 participant's responses on the online survey may exist. Lastly, as a cross-sectional

337 seroprevalence study the findings can underestimate rates of prior infections based on timing of
338 the testing given that antibodies are only transiently detectable following infection.

339 In conclusion, findings from this study are similar to other studies that have reported that higher
340 magnitude of anti-spike titres may correlate with protection against reinfection, in spite of the
341 observed decay in the antibody levels^{20,21}. Nevertheless, further studies to evaluate the longevity
342 of immunity, especially in context of widespread administration of spike-based vaccine among
343 HCWs would be important in predicting herd immunity to COVID-19 infections.

344 **Funding**

345 The authors received no specific funding for this work.

346

347 **Acknowledgements**

348 The authorship is structured in first-last-author-emphasis. We thank the COVID-19 Testing Tent
349 staff for their invaluable assistance with this study with testing and accommodation of study
350 participants for Phase 2: Patrick C McNeil PA-C MPAS; Aney D Patel PA-C MPAS; and Megan
351 Corley DNP ANP-BC. We thank the Nursing staff for their commitment and support with the
352 workflow, especially, Karen Philip and Kenisha Williamson with others; additionally, the
353 Registration (Lexus Gonzalez and Taj Washington) and Patient Care Associate (Eva Penn) that
354 assisted the research team. We also thank the Occupational Health Services for accommodating
355 the research team during project completion. The Clinical Laboratory staff played a part in
356 allocating resources for Abbott Architect usage: Dior Ndao and Ayman Elshamshery. We thank
357 the study participants, who were essential health care workers, who volunteered to follow-up in
358 this protocol.

359

360 **Contributions**

361 V.M., M.A.S. and U.V. designed the study. J.M.C., M.A.S., B.Y., V.P.G. analysed the data. E.V.
362 and M.G. assisted with participant follow-up and coordination with the assistance of A.P., U.V.,
363 V.M., and M.A.S. The Mount Sinai Health System team, J.M.C. and F.K., performed the
364 measurements for anti-Spike and Anti-RBD antibodies. V.M., U.V. and A.P. were responsible
365 for the clinical care of the research participants and supervised the day-to-day operation and
366 coordination of the study by M.K., V.D., M.A.S., B.Y., V.P.G., M.G., E.V., and M.G.
367 V.M. and F.K wrote the manuscript and is the guarantor of this work and has full access to all
368 data in the study and takes responsibility for the integrity of the data and the accuracy of the data
369 analysis, with the assistance of J.C.Q., M.A.S., B.Y., V.P.G., and M.G.
370 All authors critically revised the draft and approved the final manuscript.

371

372 **Potential conflicts of interest**

373 F.K. is listed as a co-inventor on a patent application filed by The Icahn School of Medicine at Mount
374 Sinai relating to SARS-CoV-2 serological assays and NDV-based SARS-CoV-2 vaccines. Mount Sinai
375 has spun out a company, Kantaro, to market serological tests for SARS-CoV-2. F.K. has consulted for
376 Merck and Pfizer (before 2020), and is currently consulting for Seqirus and Avimex. F.K.'s Krammer
377 laboratory is also collaborating with Pfizer on animal models of SARS-CoV-2.
378 All other authors report no potential conflicts. All authors have submitted the ICMJE Form for
379 Disclosure of Potential Conflicts of Interest.

380 References

- 381 1. Ou X, Liu Y, Lei X, et al. Characterization of spike glycoprotein of SARS-CoV-2 on
382 virus entry and its immune cross-reactivity with SARS-CoV. *Nat Commun.*
383 [2020;11\(1\):1620](https://doi.org/10.1038/s41467-020-1620-2).
- 384 2. Walls AC, Park YJ, Tortorici MA, Wall A, McGuire AT, Velesler D. Structure, Function,
385 and Antigenicity of the SARS-CoV-2 Spike Glycoprotein. *Cell.* [2020;181\(2\):281-292](https://doi.org/10.1016/j.cell.2020.05.014).
- 386 3. Premkumar L, Segovia-Chumbez B, Jadi R, et al. The receptor binding domain of the
387 viral spike protein is an immunodominant and highly specific target of antibodies in
388 SARS-CoV-2 patients. *Sci Immunol.* [2020;5\(48\):eabc8413](https://doi.org/10.1126/sciimmunol.abc8413).
- 389 4. Ni L, Ye F, Cheng ML, et al. Detection of SARS-CoV-2-Specific Humoral and Cellular
390 Immunity in COVID-19 Convalescent Individuals. *Immunity.* [2020;52\(6\):971-977](https://doi.org/10.1016/j.immuni.2020.05.014)
- 391 5. Iyer AS, Jones FK, Nodoushani A, et al. Persistence and decay of human antibody
392 responses to the receptor binding domain of SARS-CoV-2 spike protein in COVID-19
393 patients. *Sci Immunol.* [2020; 5\(52\):eabe0367](https://doi.org/10.1126/sciimmunol.abe0367).
- 394 6. Cong Y, Ulasli M, Schepers H, et al. Nucleocapsid Protein Recruitment to Replication-
395 Transcription Complexes Plays a Crucial Role in Coronaviral Life Cycle. *J Virol.*
396 [2020;94\(4\):e01925-19](https://doi.org/10.1128/JVI.01925-19).
- 397 7. Burbelo PD, Riedo FX, Morishima C, et al. Detection of Nucleocapsid Antibody to
398 SARS-CoV-2 is More Sensitive than Antibody to Spike Protein in COVID-19 Patients.
399 *medRxiv [Preprint].* [2020;2020.04.20.20071423](https://doi.org/10.1101/2020.04.20.20071423)
- 400 8. Long QX, Liu BZ, Deng HJ, Wu GC, Deng K, Chen YK. Antibody responses to SARS-
401 CoV-2 in patients with COVID-19. *Nat Med.* [2020;26\(6\):845-848](https://doi.org/10.1038/s41591-020-0845-8).
- 402 9. İnandıklioğlu N, Akkoc T. Immune Responses to SARS-CoV, MERS-CoV and SARS-
403 CoV-2. *Adv Exp Med Biol.* [2020;1288:5-12](https://doi.org/10.1007/978-1-4939-9888-8_5).
- 404 10. Chaudhuri S, Thiruvengadam R, Chattopadhyay S ,et al. Comparative evaluation of
405 SARS-CoV-2 IgG assays in India. *J Clin Virol.* [2020;131:104609](https://doi.org/10.1016/j.jcv.2020.104609).
- 406 11. Wajnberg A, Amanat F, Firpo A, et al. Robust neutralizing antibodies to SARS-CoV-2
407 infection persist for months. *Science.* [2020;370\(6521\):1227-1230](https://doi.org/10.1126/science.aba7221).
- 408 12. Crawford KHD, Dingens AS, Eguia R, et al. Dynamics of neutralizing antibody titers in
409 the months after SARS-CoV-2 infection. *J Infect Dis.* [2020;jiaa618](https://doi.org/10.1093/infdis/jiaa618).
- 410 13. Luchsinger LL, Ransegnola BP, Jin DK, et al. Serological Assays Estimate Highly
411 Variable SARS-CoV-2 Neutralizing Antibody Activity in Recovered COVID-19 Patients.
412 *J Clin Microbiol.* [2020;58\(12\)](https://doi.org/10.1128/JCM.01812-20)
- 413 14. Iyer AS, Jones FK, Nodoushani A, et al. Dynamics and significance of the antibody
414 response to SARS-CoV-2 infection. *medRxiv.* [2020;2020.07.18.20155374](https://doi.org/10.1101/2020.07.18.20155374).
- 415 15. Isho B, Abe KT, Zuo M, et al. Persistence of serum and saliva antibody responses to
416 SARS-CoV-2 spike antigens in COVID-19 patients. *Sci Immunol.* [2020;5\(52\): eabe5511](https://doi.org/10.1126/sciimmunol.abe5511).
- 417 16. Wu F, Wang A, Liu m, et al. Neutralizing antibody responses to SARS-CoV-2 in a
418 COVID-19 recovered patient cohort and their implications. *medRxiv,*
419 [2020;2020.03.30.20047365](https://doi.org/10.1101/2020.03.30.20047365).
- 420 17. Seow J, Graham C, Merrick B, et al. Longitudinal observation and decline of neutralizing
421 antibody responses in the three months following SARS-CoV-2 infection in humans. *Nat*
422 *Microbiol.* [2020;5\(12\):1598-1607](https://doi.org/10.1038/s41564-020-0607-2).
- 423 18. Grandjean L, Saso A, Torres A, et al. Humoral Response Dynamics Following Infection
424 with SARS-CoV-2. *medRxiv,* [2020;2020.07.16.20155663](https://doi.org/10.1101/2020.07.16.20155663).

- 425 19. Ellebedy A, Turner J, Kim W, et al. SARS-CoV-2 infection induces long-lived bone
426 marrow plasma cells in humans. *Res Sq [Preprint]*. 2020;rs.3.rs-132821.
- 427 20. Lumley SF, O'Donnell D, Stoesser NE, et al. Antibody Status and Incidence of SARS-
428 CoV-2 Infection in Health Care Workers. *N Engl J Med*. 2021;384(6):533-540.
- 429 21. Hall V, Foulkes S, Charlett A, et al. Do antibody positive healthcare workers have lower
430 SARS-CoV-2 infection rates than antibody negative healthcare workers? Large multi-
431 centre prospective cohort study (the SIREN study), England: June to November 2020.
432 *medRxiv*, 2021;2021.01.13.21249642.
- 433 22. Self WH, Tenforde MW, Stubblefield WB, et al. Seroprevalence of SARS-CoV-2 Among
434 Frontline Health Care Personnel in a Multistate Hospital Network. *13 Academic Medical
435 Centers, April-June 2020. MMWR Morb Mortal Wkly Rep*. 2020;69(35):1221-1226.
- 436 23. Moscola J, Sembajwe G, Jarrett M, et al. Prevalence of SARS-CoV-2 Antibodies in
437 Health Care Personnel in the New York City Area. *JAMA*. 2020;324(9):893-895.
- 438 24. Venugopal U, Jilani N, Rabah S, et al. SARS-CoV-2 seroprevalence among health care
439 workers in a New York City hospital: A cross-sectional analysis during the COVID-19
440 pandemic. *Int J Infect Dis*. 2021;102:63-69
- 441 25. H Hamilton F, Muir P, Attwood M, et al. Kinetics and performance of the Abbott architect
442 SARS-CoV-2 IgG antibody assay. *J Infect*. 2020;81(6):e7-e9.
- 443 26. Amanat F, Stadlbauer D, Strohmeier S, et al. A serological assay to detect SARS-CoV-2
444 seroconversion in humans. *Nat Med*. 2020;26(7):1033-1036.
- 445 27. Stadlbauer D, Amanat F, Chromikova V, et al. SARS-CoV-2 Seroconversion in Humans:
446 A Detailed Protocol for a Serological Assay, Antigen Production, and Test Setup. *Curr
447 Protoc Microbiol*. 2020;57(1):e100.
- 448 28. Amanat F, Stadlbauer D, Strohmeier S, et al. A serological assay to detect SARS-CoV-2
449 seroconversion in humans. *Nat Med*. 2020;26(7):1033-1036.
- 450 29. Stadlbauer D, Tan J, Jiang K, et al. Repeated cross-sectional sero-monitoring of SARS-
451 CoV-2 in New York City. *Nature*. 2021;590(7844):146-150.
- 452 30. Garcia M, Lipskiy N, Tyson J, Watkins R, Esser ES, Kinley T. Centers for Disease
453 Control and Prevention 2019 novel coronavirus disease (COVID-19) information
454 management: addressing national health-care and public health needs for standardized
455 data definitions and codified vocabulary for data exchange. *J Am Med Inform Assoc*.
456 2020;27(9):1476-1487
- 457 31. Therrien C, Serhir B, Bélanger-Collard M, et al. Multicenter Evaluation of the Clinical
458 Performance and the Neutralizing Antibody Activity Prediction Properties of ten high
459 throughput serological assays used in Clinical Laboratories. *J Clin Microbiol*.
460 2020;JCM.02511-20.
- 461 32. Muecksch F, Wise H, Batchelor B, et al. Longitudinal analysis of clinical serology assay
462 performance and neutralising antibody levels in COVID19 convalescents. *medRxiv*,
463 2020;2020.08.05.20169128.
- 464 33. Rosadas C, Randell P, Khan M, McClure MO, Tedder RS. Testing for responses to the
465 wrong SARS-CoV-2 antigen? *Lancet*. 2020;396(10252):e23.
- 466 34. Sun B, Feng Y, Mo X, et al. Kinetics of SARS-CoV-2 specific IgM and IgG responses in
467 COVID-19 patients. *Emerg Microbes Infect*. 2020;9(1):940-948.
- 468 35. Long QX, Tang XJ, Shi QL, et al. Clinical and immunological assessment of
469 asymptomatic SARS-CoV-2 infections. *Nat Med*. 2020; 26(8):1200-1204.
- 470 36. Wang Y, Zhang L, Sang L, et al. Kinetics of viral load and antibody response in relation

- 471 to COVID-19 severity. *J Clin Invest*. 2020;130(10):5235-5244.
- 472 37. Choe PG, Kang CK, Suh HJ, et al. Waning Antibody Responses in Asymptomatic and
473 Symptomatic SARS-CoV-2 Infection. *Emerg Infect Dis*. 2021;27(1):327-329.
- 474
- 475 38. Boonyaratanakornkit J, Morishima C, Selke S, et al. Clinical, laboratory, and temporal
476 predictors of neutralizing antibodies to SARS-CoV-2 after COVID-19. *medRxiv*. 2020;
477 2020.10.06.20207472.
- 478
- 479
- 480

481 Table 1: Broad characteristics among health care workers assessed for antibody reactivity to
 482 spike SARS-CoV-2 protein in Phase 1 and Phase 2

483

	Overall †	Spike ELISA (AUC) positive in both phases	Negative Reactivity to spike (AUC) in both phases	p value
	N=176	n=68	n=108	
Age, years	44.7+12.4	42.9+11.9	45.8+12.7	0.099
Female, Gender	111 (63.1%)	40 (58.8%)	71 (65.7%)	0.467
Race				0.666
Latinx	54 (30.7%)	21 (30.9%)	33 (30.6%)	
Asian	52 (29.5%)	18 (26.5%)	34 (31.5%)	
Black	29 (16.5%)	15 (22.1%)	14 (13.0%)	
White	31 (17.6%)	10 (14.7%)	21 (19.4%)	
Other	10 (5.7%)	4 (5.9%)	6 (5.9%)	
Comorbidities	54 (30.7%)	25 (36.8%)	29 (26.9%)	0.214
BCG vaccine received in childhood	87 (49.4%)	35 (51.5%)	52 (48.1%)	0.902
COVID-19 related symptoms prior to Phase 1	103 (58.5%)	57 (83.8%)	46 (42.6%)	<.001
Duration of symptoms				<.001
<7 days	48 (46.6%)	18 (31.0%)	30 (66.7%)	
7-14 days	19 (18.4%)	12 (20.7%)	7 (15.6%)	
>14 days	36 (35.0%)	28 (48.3%)	8 (17.8%)	
Time from symptom to positive result, days	45.7+19.9	47.9+16.0	42.9+24.1	0.062
RT-PCR positive result for SARS-CoV-2 prior to Phase 1	51 (29.0%)	49 (72.1%)	2 (1.9%)	<.001
RT-PCR positive result for SARS-CoV-2 during Phase 1	14 (8.0%)	13 (19.1%)	1 (0.9%)	<.001
Persisting symptoms from COVID-19	25 (14.2%)	19 (27.9%)	6 (5.6%)	<.001
Nature of work				0.306
Physicians	81 (46.0%)	29 (42.6%)	52 (51.5%)	
Nurses	29 (16.5%)	15 (22.1%)	14 (13.0%)	
Others	64 (36.4%)	24 (35.3%)	40 (39.6%)	
Hospital areas worked in:				
Emergency department/Inpatient units	118 (67.0%)	50 (73.5%)	68 (63.0%)	0.141
Ambulatory care/Clinics	72 (40.9%)	27 (39.7%)	45 (41.7%)	0.631

Administration/Non-clinical care areas	24 (13.6%)	9 (13.2%)	15 (13.9%)	0.867
Community exposure	47 (26.7%)	19 (27.9%)	28 (25.9%)	0.591
Household exposure	39 (22.2%)	17 (25.0%)	22 (20.4%)	0.343
PPE use at work	173 (98.3%)	67 (98.5%)	106 (98.1%)	0.226
Use of facemask outside of the hospital	158 (89.8%)	58 (85.3%)	100 (92.6%)	0.062

Continuous variables are expressed as mean (SD), categorical variables as n (%).

BCG, Bacillus Calmette–Guérin vaccine; PPE, personal protective equipment; RT-PCR, reverse transcription polymerase chain reaction.

† Demographic data is missing for 2 participants from the overall cohort.

484

485

486

487

488

Table 2: Broad characteristics among health care workers with positive antibody reactivity to SARS-CoV-2 spike in both phases

	Overall	Asymptomatic for SARS-CoV-2 infection	Symptomatic for SARS-CoV-2 infection	<i>p</i> value
	n=68	n=11	n=57	
Age, Mean (\pm SD)	42.9 (\pm 1.45)	44.5 (\pm 3.8)	42.6 (\pm 1.6)	0.557
Female, n (%)	40 (58.8%)	6 (54.5%)	34 (40.4%)	0.502
Race				0.753
Latinx	21 (30.9%)	3 (27.3%)	18 (31.6%)	
Asian	18 (26.5%)	3 (27.3%)	18 (26.3%)	
Black	15 (22.1%)	3 (27.3%)	12 (21.1%)	
White	10 (14.7%)	2 (18.2%)	8 (14.0%)	
Other	4 (5.8%)	0 (0%)	4 (7.0%)	
Comorbidities				
Hypertension	13 (19.1%)	2 (18.2%)	11 (19.3%)	0.650
Diabetes	6 (8.8%)	0 (0%)	6 (10.5%)	0.332
COPD and asthma	13 (19.1%)	1 (9.1%)	12 (21.1%)	0.326
Number of symptoms, median (IQR)	-	-	4.0 (2.0-5.0)	
Length of symptoms				
<7 days	-	-	19 (33.3%)	
7-14 days	-	-	12 (21.1%)	
>14 days	-	-	26 (45.6%)	
Degree of HCW exposure				0.492
High and Moderate	16 (23.5%)	2 (18.2%)	14 (24.6%)	
Minor	52 (76.5%)	9 (81.8%)	43 (75.4%)	
Community exposure	19 (27.9%)	3 (27.3%)	16 (28.1%)	0.635

Household exposure	17 (25.4%)	3 (27.3%)	14 (24.6%)	0.557
Use of facemask outside of hospital	58 (85.3%)	9 (81.8%)	49 (86.0%)	0.722
Principal means of transportation				0.663
Public	33 (48.5%)	6 (54.5%)	27 (47.7%)	
Private	35 (51.5%)	5 (45.5%)	30 (52.6%)	
Nature of work				0.502
Physician	29 (42.6%)	4 (36.4%)	25 (43.9%)	
Nurse	15 (22.1%)	2 (18.2%)	13 (22.8%)	
Other	24 (35.3%)	5 (45.5%)	19 (33.3%)	
Hospital areas work in:				0.288
Emergency department/inpatient units	32 (47.1%)	6 (54.5%)	26 (45.6%)	
Ambulatory care/clinics	9 (13.2%)	2 (18.2%)	7 (12.3%)	
Inpatient and outpatient setting	18 (26.5%)	3 (27.3%)	15 (26.3%)	
Administration/nonclinical care areas	9 (13.2%)	0 (0%)	9 (15.8%)	
Anti-spike reactivity (AUC)				
Reactivity in phase 1, G-Mean (IQR)	6590 (5165-8410)	5803 (2825-11920)	6754 (5177-8812)	0.647
Days from symptoms to first test, Mean (\pm SD)	-	-	47.7 (\pm 1.9)	
Reactivity in phase 2, G-Mean (IQR)	2226 (1824-2718)	2382 (1494-3797)	2198 (1753-2755)	0.980
Days from symptoms to second test			174.5 (\pm 4.1)	
Rate of decay, G-Mean (IQR)	31.14 (22.11-43.87)	23.42 (8.45-64.93)	32.96 (22.73-47.82)	0.382

Continuous variables are expressed as mean (SD) or interquartile range (IQR), categorical

variables as n (%).

AUC, area under the curve; COPD, Chronic obstructive pulmonary disease; HCW, health care worker

489

490

491

Table 3: Multiple linear regression analysis of rate of decay for anti-spike antibodies between Phase 1 and Phase 2

Rate of decay (log10)	<i>B</i>	95.0% CI for <i>B</i>		<i>SE B</i>	β	R^2	$\blacktriangle R^2$
		LL	UL				
Model						0.83	0.82
Constant	-3.203**	-3.647	-2.759	.222			
Age (per 10-year change)	.014	-.005	.007	.002	.030		
BCG vaccination	.131**	.030	.310	.046	.121		
Number of symptoms	.013	-.029	.060	.012	.050		
ELISA reactivity (Log10)	1.159**	1.050	1.419	.059	.916		

B: Unstandardized regression coefficient; CI: confidence interval; LL: lower limit; UL: upper limit; *SE B*: standard error of the coefficient; β : standardized coefficient; R^2 : coefficient of determination; $\blacktriangle R^2$: adjusted R^2 .

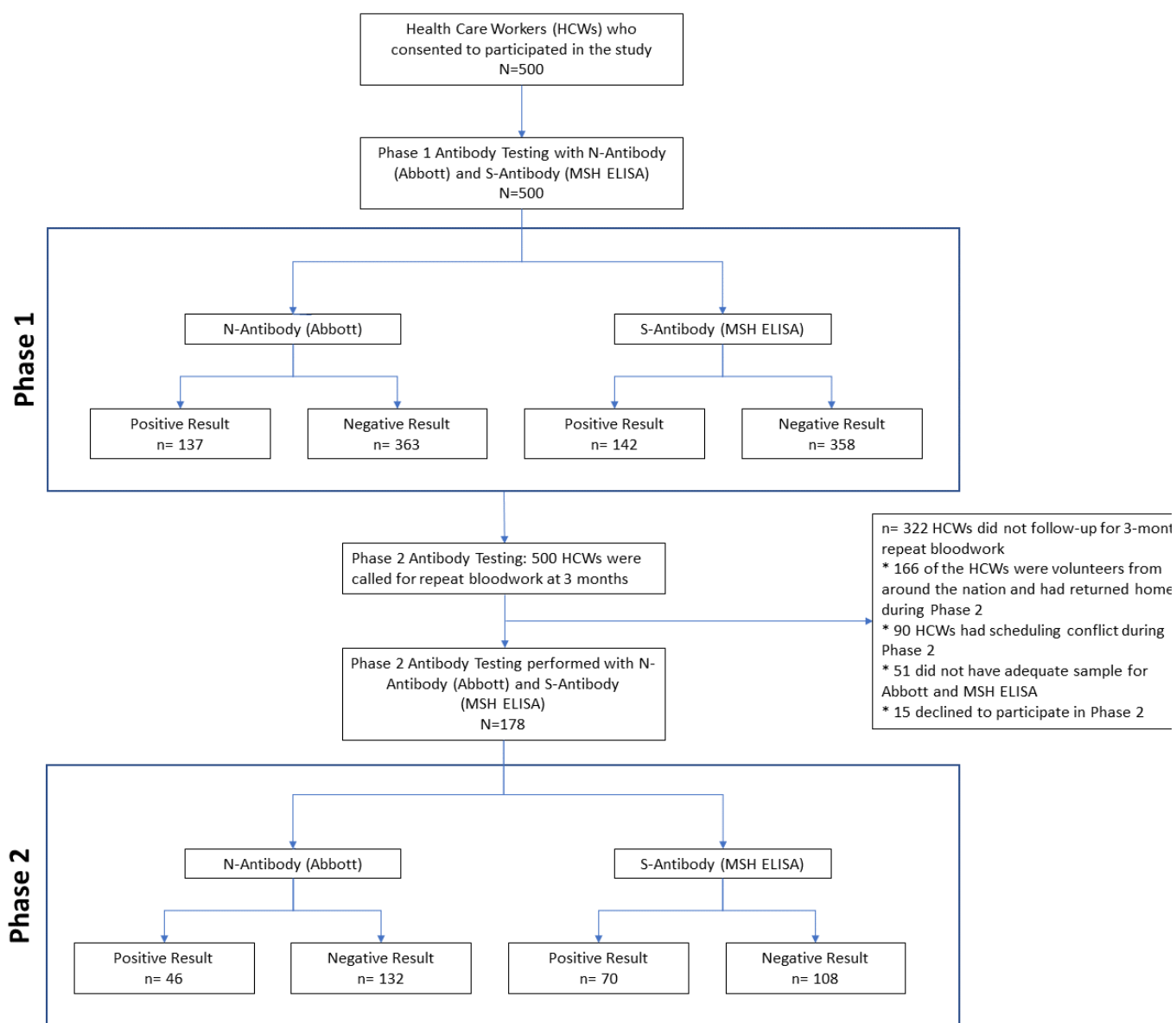
** $P < 0.05$

BCG, Bacillus Calmette–Guérin vaccine

492

493 **Figure 1: Flow Chart of patient enrollment, follow up and analysis**

494



495

496

497

498

499

500

501

502 **Figure 2: Simple correlation analysis of HCW with positive reactivity for anti- spike antibody in Phase 1 with baseline**
 503 **characteristics and symptoms**

ELISA reactivity in Phase 1 (Log10)	R	1											
	Sig.	-											
Age	R	0.269**	1										
	Sig.	0.001	-										
Gender	R	0.106	0.050	1									
	Sig.	0.209	0.552	-									
Comorbidities	R	0.130	0.468**	0.045	1								
	Sig.	0.123	0.000	0.596	-								
BCG vaccine	R	0.046	0.014	-0.129	0.084	1							
	Sig.	0.585	0.869	0.125	0.317	-							
Fever	R	0.319**	0.024	-0.089	0.018	0.060	1						
	Sig.	0.000	0.777	0.292	0.828	0.479	-						
URS	R	0.278**	0.039	0.059	0.069	-0.214*	0.464**	1					
	Sig.	0.001	0.645	0.486	0.413	0.010	0.000	-					
GI symptoms	R	0.204*	0.030	0.068	0.029	0.024	0.344**	0.291**	1				
	Sig.	0.015	0.723	0.423	0.733	0.775	0.000	0.000	-				
Number of symptoms	R	0.310**	-0.015	0.070	0.026	0.019	0.708**	0.665**	0.630**	1			
	Sig.	0.000	0.856	0.405	0.762	0.825	0.000	0.000	0.000	-			
Days of symptoms	R	0.434**	0.036	0.019	0.121	-0.038	0.422**	0.605**	0.347**	0.681**	1		
	Sig.	0.000	0.671	0.817	0.151	0.656	0.000	0.000	0.000	0.000	-		
Degree of HCW exposure	R	-0.145	-0.215**	-0.217**	-0.177*	0.017	0.017	0.034	0.000	0.039	-0.085	1	
	Sig.	0.083	0.010	0.009	0.034	0.838	0.844	0.690	0.998	0.640	0.314	-	
		ELISA reactivity in Phase 1 (Log10)	Age	Gender	Comorbidities	BCG vaccine	Fever	URS	GI symptoms	Number of symptoms	Days of symptoms	Degree of HCW exposure	

BCG, Bacillus Calmette-Guérin; URS, upper respiratory symptoms; GI, Gastrointestinal symptoms (nausea, vomit and diarrhoea); HCW, health care worker.
 **. Correlation is significant at the 0.01 level., *. Correlation is significant at the 0.05 level.

504
 505
 506
 507

508

509 **Figure 3: Simple correlation analysis of rate of decay of anti-spike antibodies between both phases with baseline**
 510 **characteristics and symptoms**

Rate of decay (Log10)	R	1									
	sig.	-									
ELISA reactivity (Log10)	R	0.898**	1								
	sig.	0	-								
Age	R	0.176	0.182	1							
	sig.	0.198	0.184	-							
Gender	R	0.044	0.094	0.001	1						
	sig.	0.751	0.493	0.994	-						
Comorbidity	R	0.193	0.156	0.514**	-0.092	1					
	sig.	0.158	0.257	0.000	0.502	-					
Fever	R	0.428**	0.463**	-0.090	-0.090	-0.122	1				
	sig.	0.001	0.000	0.515	0.512	0.374	-				
GI symptoms	R	0.340*	0.289*	-0.020	-0.072	-0.163	0.269*	1			
	sig.	0.011	0.033	0.885	0.603	0.234	0.047	-			
Number of symptoms	R	0.357**	0.360**	-0.256	0.008	-0.193	0.640**	0.555**	1		
	sig.	0.007	0.007	0.059	0.954	0.158	0.000	0.000	-		
Duration of symptoms	R	0.469**	0.469**	-0.049	0.123	0.142	0.204	0.207	0.430**	1	
	sig.	0.000	0.000	0.723	0.370	0.300	0.136	0.129	0.001	-	
Degree of HCW exposure	R	0.067	0.106	0.154	0.266*	0.202	-0.136	-0.075	-0.184	0.133	1
	sig.	0.625	0.439	0.261	0.050	0.140	0.321	0.586	0.180	0.334	-
		Rate of decay (Log10)	ELISA reactivity (Log10)	Age	Gender	Comorbidity	Fever	GI symptoms	Number of symptoms	Duration of symptoms	Degree of HCW exposure

BCG: Bacillus Calmette-Guérin; GI: Gastrointestinal symptoms (nausea, vomit and diarrhea); HCW: health care worker.

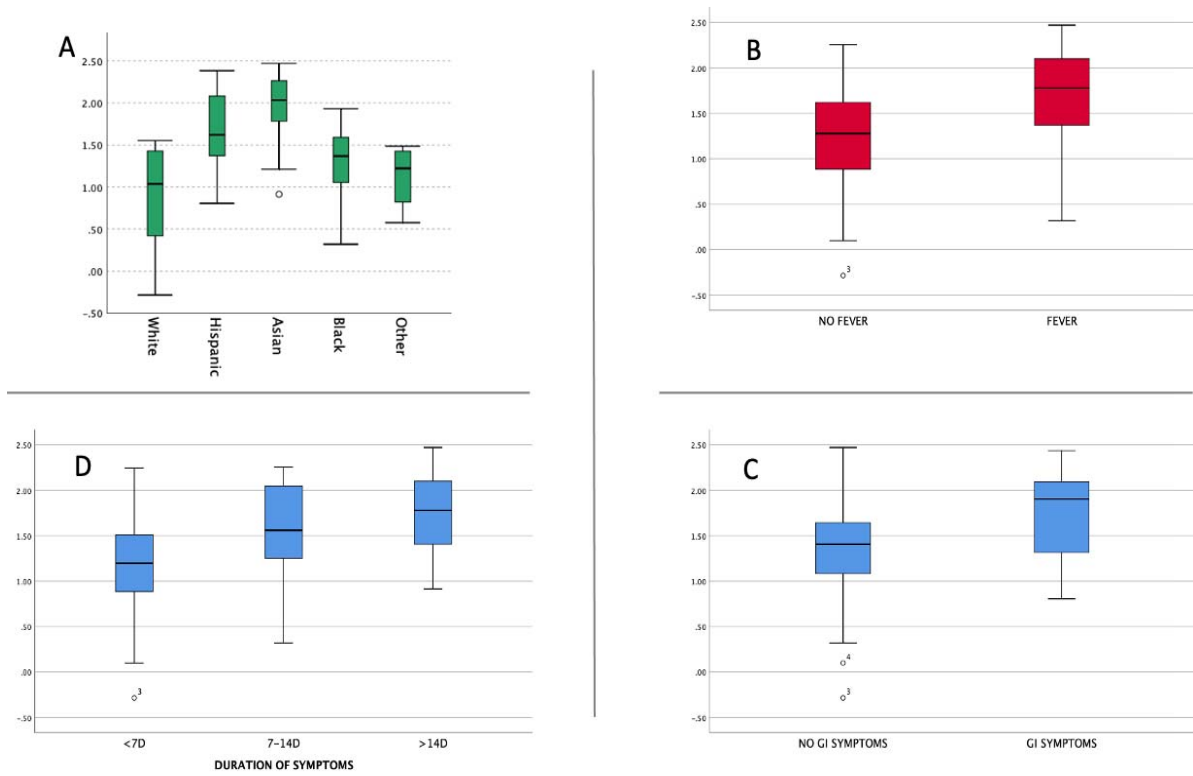
** Correlation is significant at the 0.01 level, * Correlation is significant at the 0.05 level

511

512

513 **Figure 4: Paired comparison between rate of decay of anti-spike antibody titres and patient**
514 **characteristics**

515



516

517

518

519

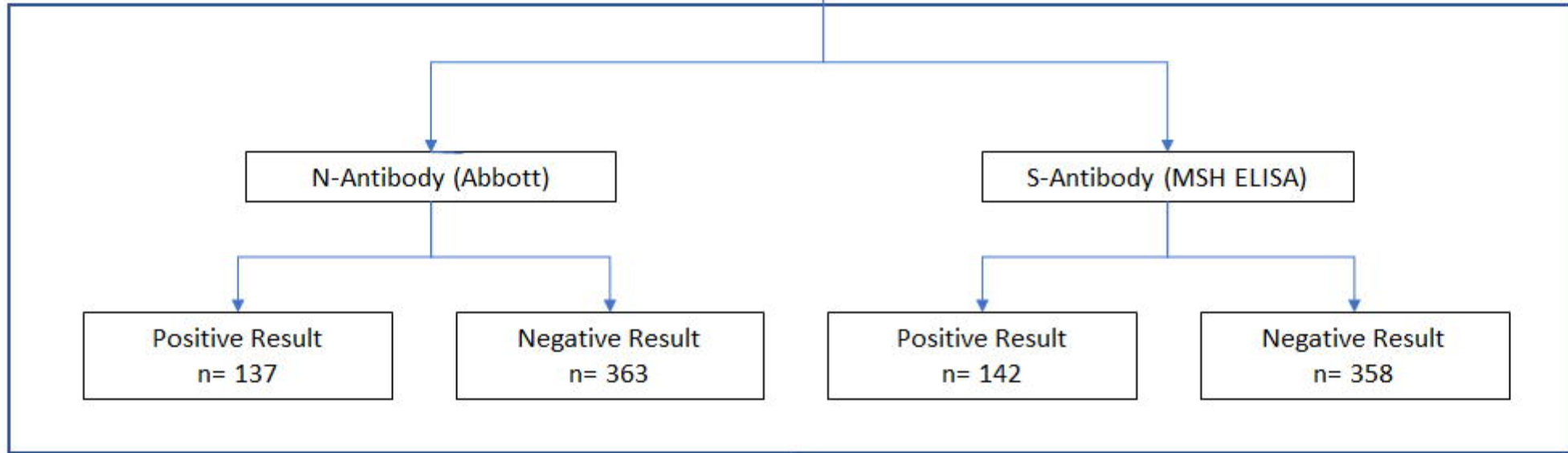
520

521

Phase 1

Health Care Workers (HCWs) who
consented to participate in the study
N=500

Phase 1 Antibody Testing with N-Antibody
(Abbott) and S-Antibody (MSH ELISA)
N=500

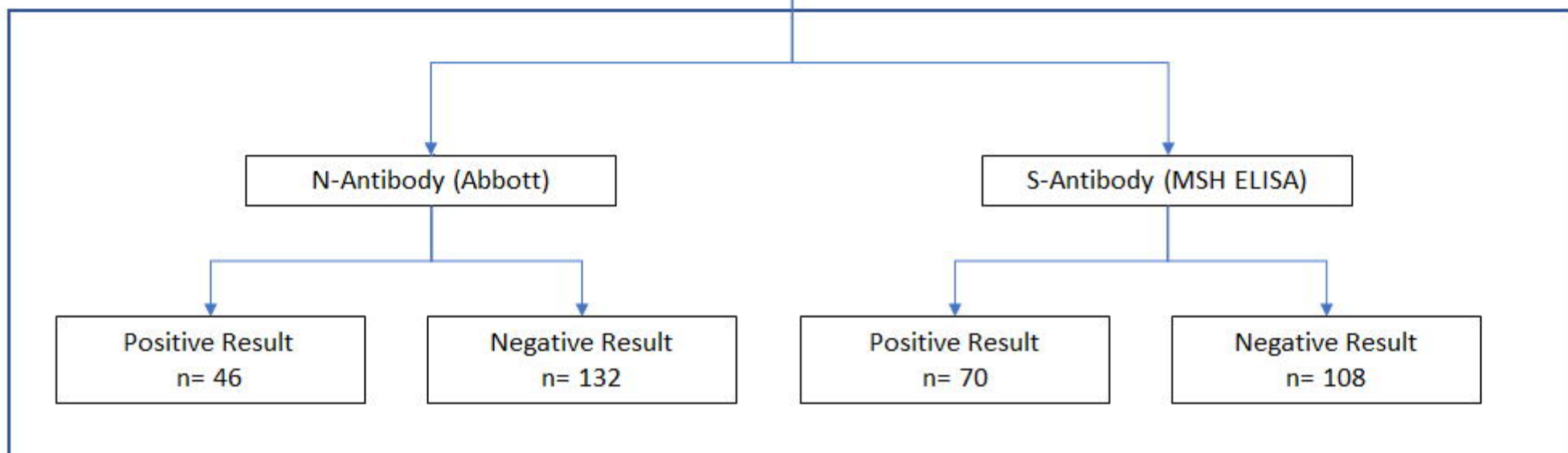


Phase 2

Phase 2 Antibody Testing: 500 HCWs were called for repeat bloodwork at 3 months

Phase 2 Antibody Testing performed with N-Antibody (Abbott) and S-Antibody (MSH ELISA)
N=178

n= 322 HCWs did not follow-up for 3-month repeat bloodwork
* 166 of the HCWs were volunteers from around the nation and had returned home during Phase 2
* 90 HCWs had scheduling conflict during Phase 2
* 51 did not have adequate sample for Abbott and MSH ELISA
* 15 declined to participate in Phase 2



		ELISA reactivity in Phase 1 (Log10)	Age	Gender	Comorbidities	BCG vaccine	Fever	URS	GI symptoms	Number of symptoms	Days of symptoms	Degree of HCW exposure
ELISA reactivity in Phase 1 (Log10)	R	-										
	Sig.	-										
Age	R	0.269**	1									
	Sig.	0.001	-									
Gender	R	0.106	0.050	1								
	Sig.	0.209	0.552	-								
Comorbidities	R	0.130	0.468**	0.045	1							
	Sig.	0.123	0.000	0.596	-							
BCG vaccine	R	0.046	0.014	-0.129	0.084	1						
	Sig.	0.585	0.869	0.125	0.317	-						
Fever	R	0.319**	0.024	-0.089	0.018	0.060	1					
	Sig.	0.000	0.777	0.292	0.828	0.479	-					
URS	R	0.278**	0.039	0.059	0.069	-0.214*	0.464**	1				
	Sig.	0.001	0.645	0.486	0.413	0.010	0.000	-				
GI symptoms	R	0.204*	0.030	0.068	0.029	0.024	0.344**	0.291**	1			
	Sig.	0.015	0.723	0.423	0.733	0.775	0.000	0.000	-			
Number of symptoms	R	0.310**	-0.015	0.070	0.026	0.019	0.708**	0.665**	0.630**	1		
	Sig.	0.000	0.856	0.405	0.762	0.825	0.000	0.000	0.000	-		
Days of symptoms	R	0.434**	0.036	0.019	0.121	-0.038	0.422**	0.605**	0.347**	0.681**	1	
	Sig.	0.000	0.671	0.817	0.151	0.656	0.000	0.000	0.000	0.000	-	
Degree of HCW exposure	R	-0.145	-0.215**	-0.217**	-0.177*	0.017	0.017	0.034	0.000	0.039	-0.085	1
	Sig.	0.083	0.010	0.009	0.034	0.838	0.844	0.690	0.998	0.640	0.314	-

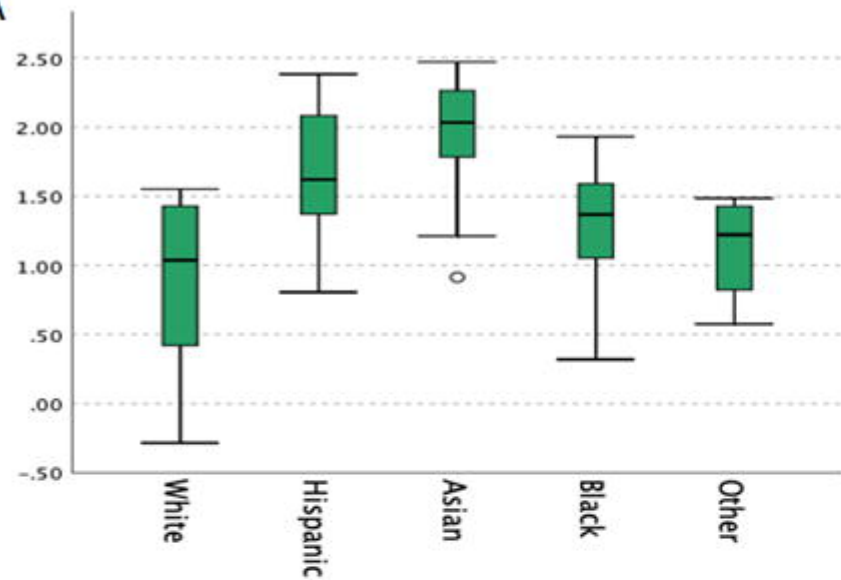
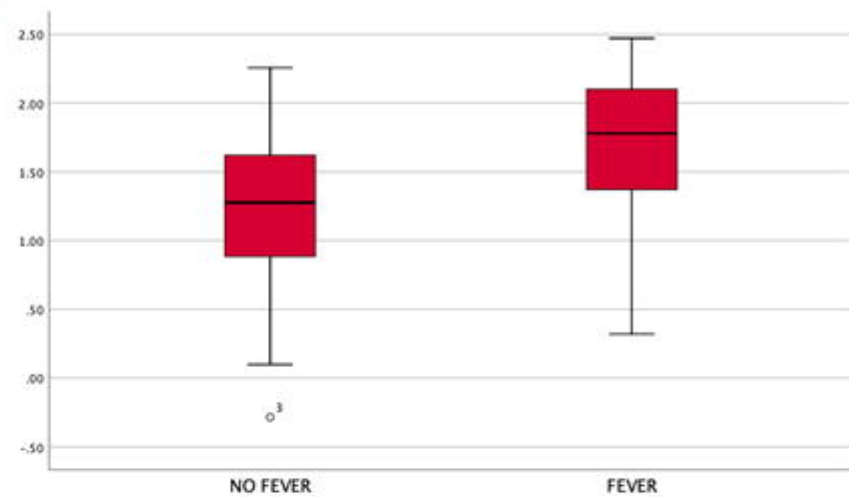
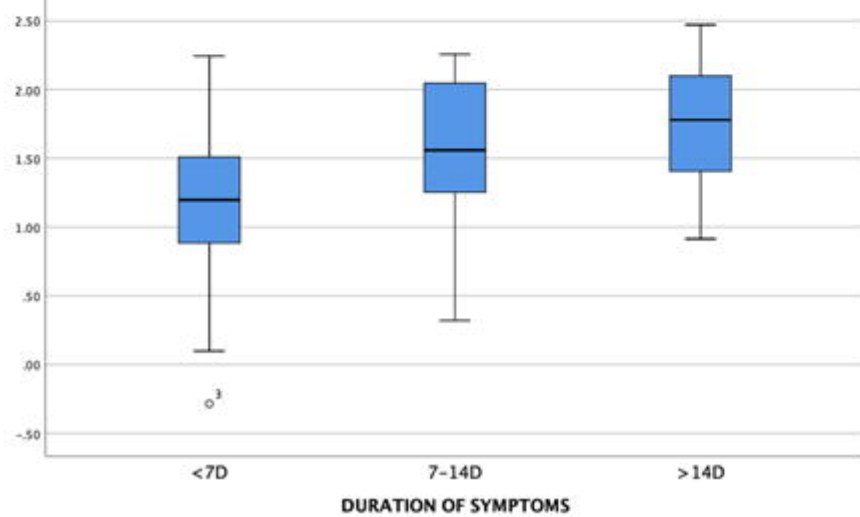
BCG, Bacillus Calmette–Guérin; URS, upper respiratory symptoms; GI, Gastrointestinal symptoms (nausea, vomit and diarrhoea); HCW, health care worker.

** . Correlation is significant at the 0.01 level., * . Correlation is significant at the 0.05 level.

Rate of decay (Log10)	R	1										
	sig.	-										
ELISA reactivity (Log10)	R	0.898**	1									
	sig.	0	-									
Age	R	0.176	0.182	1								
	sig.	0.198	0.184	-								
Gender	R	0.044	0.094	0.001	1							
	sig.	0.751	0.493	0.994	-							
Comorbidity	R	0.193	0.156	0.514**	-0.092	1						
	sig.	0.158	0.257	0.000	0.502	-						
Fever	R	0.428**	0.463**	-0.090	-0.090	-0.122	1					
	sig.	0.001	0.000	0.515	0.512	0.374	-					
GI symptoms	R	0.340*	0.289*	-0.020	-0.072	-0.163	0.269*	1				
	sig.	0.011	0.033	0.885	0.603	0.234	0.047	-				
Number of symptoms	R	0.357**	0.360**	-0.256	0.008	-0.193	0.640**	0.555**	1			
	sig.	0.007	0.007	0.059	0.954	0.158	0.000	0.000	-			
Duration of symptoms	R	0.469**	0.469**	-0.049	0.123	0.142	0.204	0.207	0.430**	1		
	sig.	0.000	0.000	0.723	0.370	0.300	0.136	0.129	0.001	-		
Degree of HCW exposure	R	0.067	0.106	0.154	0.266*	0.202	-0.136	-0.075	-0.184	0.133	1	
	sig.	0.625	0.439	0.261	0.050	0.140	0.321	0.586	0.180	0.334	-	
		Rate of decay (Log10)	ELISA reactivity (Log10)	Age	Gender	Comorbidity	Fever	GI symptoms	Number of symptoms	Duration of symptoms	Degree of HCW exposure	

BCG: Bacillus Calmette–Guérin; GI: Gastrointestinal symptoms (nausea, vomit and diarrhea); HCW: health care worker.

** . Correlation is significant at the 0.01 level, * . Correlation is significant at the 0.05 level

A**B****D****C**