

Title page details:

Title: Subtle oromotor signs in early Parkinson's disease before clinical manifestations of dysphagia

Sunita Gudwani¹, PhD (NMR); Escorts Heart Institute and Research Centre, New Delhi, India

Prabhakar Upadhyay², M.Sc. (ASLP); Lady Harding Medical College and Associated Hospitals, New Delhi, India

Kamlesh Sharma³, MD (Physiology), DLO; ESIC Dental College, New Delhi, India

Rajesh Sagar⁴, MD (Psychiatry); All India Institute of Medical Sciences, New Delhi, India

S. Senthil Kumaran⁵, PhD (Physics); All India Institute of Medical Sciences, New Delhi, India

R.K. Dhamija⁶, MD, DNB (Neurology); Lady Harding Medical College and Associated Hospitals, New Delhi, India

Contribution of authors

Contributions

1) Research Project: A. Conception, B. Expert, C. Organization, D. Execution, E. Coordination, F. Ethical clearance

2) Statistical Analysis: A. Design, B. Interpretation, C. Review and Critique conceptualization

3) Data collection: A. clinical diagnosis, B. patient referral C. patient screening and patient recruitment, D. clinical assessments, E. MRI, F. compiling of data

4) Statistical Analysis: A. inter-rater reliability

5) Manuscript: A. Writing of the first draft, B. Review and Critique

1. Sunita Gudwani- 1A, 1B, 1D, 1E, 2A, 2B, 2C, 3D, 3E, 3F, 5A, 5B

2. Prabhakar Upadhyay – 1B, 1C, 1D, 2C, 3C, 3F, 5B

3. Kamlesh Sharma – 1B, 1C, 4A, 5B

4. Rajesh Sagar – 1B, 1C, 1E

5. S. Senthil Kumaran – 1B, 1C, 1E, 1F

6. R.K. Dhamija – 1B, 1C, 1E, 3A, 3B, 5B

Word Count: Abstract 202; Manuscript 2898

Running Title: Dysphagia in early PD with dynamic MRI

Key Words: Parkinson's disease, Swallowing, Early-signs, dynamic-MRI, pre-clinical manifestation

Financial Disclosure/Conflict of Interest: None of the authors have any financial issues or conflict of interest

Ethical considerations - The study was approved from the Institute's Ethics Committee (IEC, 33/02.02.2018). Written informed consent was obtained from all the participants before recruited in the study. We confirm that we have read the Journal's position on issues involved in ethical publication and affirm that this work is consistent with those guidelines.

Funding Source: It is a non-funded pilot study

NOTE: This preprint reports new research that has not been certified by peer review and should not be used to guide clinical practice.

Title: Subtle Oromotor signs in early Parkinson's disease before clinical manifestations of dysphagia.

Abstract

Background: Swallowing is complex phenomena comprising oral (preparatory and pre-swallow positioning), oropharyngeal, pharyngeal and esophageal phases. The timing of these phases is controlled by brain stem pattern generators including reflex for oropharyngeal propulsion and transit. Dysphagia in Parkinson's disease (PD) commonly observed at late stages with aspiration, pneumonia and hospitalization.

Objective: Can subtle oromotor signs (if any) be observed for planning early interventions in PD

Methods: The present study investigated oromotor function in fourteen early PD (onset ≤ 2 years; H&Y score ≤ 2.5) with dynamic MRI using saline (water) bolus and compared with seven age-matched healthy controls.

Results: All the patients with PD were non-symptomatic for dysphagia by self-reporting, and on clinical assessment (Part-II MDS-UPDRS, Swallowing disturbance questionnaire, SDQ and Clinical assessment of dysphagia in neurodegeneration, CADN). Qualitatively MR images visualized, differences in PD compared to healthy controls for tongue-wave, velar-closure or release, bolus placement, oropharyngeal reflex-initiation, transit-time, epiglottic-closure-coordination and post-swallow oral or pharyngeal residue. Descriptive analysis showed higher variability of velar-closure, oropharyngeal- and pharygoesophageal-transit time in patient with PD. Group analysis (two-sample) show significant difference for velar-closure.

Conclusion: Multiple lingual-waves, reverse-tongue thrust, with delayed velar control attributed to incoordinated muscular rhythm. Variable oropharyngeal transit time (0.64 to 2.25 msec) in PD ascribed to brainstem degenerative changes. Findings imply that subtle observable early oromotor signs as pre-clinical manifestation when evaluated with non-invasive, non-contrast dynamic MRI support early intervention, to prevent late-stage aspiration episodes and consequent hospitalizations.

1. Introduction

Swallowing, a basic oromotor function for survival may be affected in Parkinson's Disease (PD) compromising the quality of life^{1,2}. The prevalence of swallowing problems in neurodegenerative populations is under-reported as first episode of aspiration and pneumonia^{3,4}. Prevalence of dysphagia in PD has been reported as 20% to 80%³ or 82% when the objective measures are used⁵. The causes of dysphagia in PD may be multifactorial, though muscle rigidity, slow, hesitant and incoordinated movements are major responsible factors⁶. These factors are difficult to evaluate as neither the occurrence nor severity of dysphagia correlate with overall disease^{7,8}. Dietary habits, life-style may contribute to neurodegenerative progression^{9,10} and the oromotor function (speech) may play an important role in prodromal phase^{11,12}. Early diagnosis of dysphagia in PD may prevent hospitalization, disability, deaths, and global burden¹³ for which periodical evaluation of oromotor

function is required. Clinically early assessment is crucial for patient prognosis¹⁴ and available gold standard tools videofluoroscopy (VFS) or Flexible endoscopic evaluations of swallowing (FEES) are still with constraints^{2,15,16,17,18,19}. If such diagnosis is complemented with non-invasive, patient and environment friendly objective investigation, it will facilitate early identification, optimal intervention with better prognosis and reducing the morbidity.

Swallowing mechanism has four phases, problem may be in any phase or combination of phases in PD. The temporal tongue^{20,21}, velopharyngeal²², pharyngeal wall and oesophageal impairments ascribed to ‘enteric nervous system’ are early modifications documented in PD⁵. With appropriate technique the subtle oromotor differences might be the first sign of the disease⁵ that go undiagnosed in early stages. Thus, present study was planned to investigate subtle oromotor signs during saline swallowing in early PD with non-invasive dynamic MRI.

2. Methods

After approval of the study from the Institute’s Ethics Committee, fourteen subjects (seven male and seven female) with Parkinson’s disease (PD) and seven healthy controls (four male and three female) of same age range were recruited from Neurology outpatient services. The inclusion criteria for group A (PD) subjects were: diagnosed with idiopathic PD by the neurologist and had given written informed consent for the investigations. The exclusion in group A were as- no other neurological disorder, psychiatric disorder, and contraindications for MRI. Inclusion criteria of group B (Healthy subjects, HC) were: no neurological, swallowing, psychiatric disorders, or any other disorder that can affect swallowing and had given written consent for the investigations. To rule out any other neurological disorder, MRI screening was also done for all the subjects. One of the healthy male control (HC) participants was excluded from the study after MRI due to extensive head motion.

2.1 Clinical Assessment

It included detailed patient's history, Unified Parkinson’s Disease Rating Scale (MDS-UPDRS) and Hoehn and Yahr stage²³ (H&Y; MDS, 2008). The subjects were elaborately interviewed for swallowing or any other oromotor problems (as self-report) scored on Swallowing Disturbance Questionnaire⁴ (SDQ), Clinical Assessment of Dysphagia in Neurodegeneration²⁴ (CADN). SDQ is a fifteen item questionnaire regarding swallowing assessment in PD where more than eleven ‘yes’ has been considered as positive scores⁴. CADN is eleven item scale with two parts consisting of first as questionnaire (anamnesis - seven items) and second as clinical observation (four items) where more than one-and-half (>1.5) scores considered for further assessment. In degenerative diseases especially PD scoring of more than one-point-two-five (>1.25) is indicator for dysphagia investigation²⁴. Disease signs and symptoms are clinically scored on MDS-UPDRS²³ where Part-I evaluates ‘non-motor aspects of daily living experiences (nM-EDL)’, Part-II ‘motor aspects of daily living experiences (M-

EDL)', Part-III is the 'motor examination' by the investigator, and Part-IV assesses the 'motor complications'.

2.2 Imaging technique

The MRI was performed on a 1.5T clinical MRI system (Magnetom Aera, Siemens Healthcare, Erlangen, Germany) using 12-channel head, 4-channel neck coil and large 4-channel flex body coils. General screening for any other neurological incidental finding was done with anatomical sequences including T1, T2, FLAIR and SWI/DWI. Subjects with incidental other neurological disorder were informed and excluded from the study.

Dynamic two-dimensional sagittal images were acquired using single shot T2 weighted trueFISP (fast imaging with steady state precision, trufi) sequence with cine-on and free breathing. The parameters for imaging were- field of view (FOV) 230, TR 162.54msec, TE 1.27msec, flip angle 44 degrees, matrix of 206 x 256, band width of 975, single slice with slice thickness of 10mm, acquisition 3.126 fps (frames per sec i.e. 0.32 sec per frame) and total acquisition time of 8.53 minutes (511.8 sec). The K-space acquisition was 80% with phase encoding direction as rows and 208 steps. As it was T2 weighted imaging, so normal saline appeared as bright contrast compared to soft tissues²⁵.

Bolus

For swallowing the bolus was normal saline (NS, concentration 9 mg/ml i.e.0.9%) that was delivered through contrast media injector (Ulrich Medical, Ulrich GmbH & Co.KG, Germany), and sterile injector line where patient hose (250 cm) was placed in the oral cavity (fixed stably at 1cm inside, under the front incisors). Total NS was 71ml delivered in mouth with flow rate of 2ml/sec as - (i) first bolus of 21ml delivered in total injection time of 10.5 sec and later four bolus of 10 ml NS injection time of 5.0 sec. The interval after 21ml bolus was 120 sec and 65 sec inter-bolus interval for four 10 ml swallows to facilitate residual swallow efforts and post-swallow breathing.

2.3 Analysis of Data

Image processing of dynamic MRI was done in Syngo (Siemens provided) and ImageJ (Ferreira T, Rasb and W; <https://imagej.nih.gov/ij>) software. Transit time was calculated from movement completed in number of frames and the time of acquisition (frames per second). Analysis of clinical parameters was done with SPSS (version 23, IBM Corporation) software. Due to extensive head motion one of the male HC was excluded from the study analysis. Image rating was blinded during analysis and the images were qualitatively rated by two evaluators independently [blinded for images from group A (PD) or B (HC)].

3. Results

There were no significant demographic difference observed between two groups for age ranging 45 to 72 years (mean PD 60.43 ± 7.9 SD; HC 59.14 ± 8.3 SD) and gender (PD including 7M and 7F; HC including 4M and 3F). In patient group, mean duration of PD diagnosis was 1.75 ± 1.5 SD years and the disease was rated as mean 1.4 ± 1.0 SD H&Y stage (Table 1). On MDS-UPDRS rating mean motor function (Part-III) was observed as 21.22 ± 1.50 SD and 15.25 ± 0.40 SD as mean daily living motor experience (Part-II). Clinical questionnaire for swallowing (SDQ) was considered as positive when more than eleven items answered as ‘yes’⁴. None of the subject was observed as positive (that is scoring more than 11 yes). So, CADN²⁴ was also used for clinical evaluation of swallowing where all the patients with PD scored ‘no’ (zero score), or ‘subclinical’ (one score) signs of dysphagia similar to the healthy control participants. Ten (71.43%) of PD subjects’ CADN score was ‘one’ and four (28.57%) of PD subjects’ CADN score was ‘zero’ whereas CADN was scored as ‘zero’ in 66.67% (four) healthy control subjects and 33.33% (two) [as ‘one’ of the HC was excluded from analysis]. None of the patients with PD scored CADN > 1.25 suggesting for further investigation.

With dynamic MRI oromotor function was analysed for (i) pre-swallow articulatory posture, breathing pattern (pre- and post- swallow), (ii) air-swallow (dry), (iii) saliva- spooling, excessive-salivation, drooling and saliva-swallow and (iv) saline-swallow (Video). Dysphagia signs (water-like consistency) for two bolus volumes (21ml and 10ml) were rated separately to understand differences due to quantity²⁶ and these signs were scored at four-point scale²⁷ similar to modified barium swallow (MBS) (Table 1). The four 10ml boluses were rated and signs were considered as “dysphagia positive” when appeared on minimum 50% of swallow efforts with atleast mild score (Table 2). Comparing two groups with two-sample t-test the mean significant difference was found in velar closure ($t = 3.41$; $p = 0.004$ two tailed) when equal variance not assumed ($F = 16.64$; $p = 0.001$) and mean difference for oropharyngeal transit time was observed but could not reach statistical significance ($t=1.81$; $p = 0.08$) equal variance assumed ($F = 1.14$; $p = 0.299$). Bolus volume splitting was similar in both HC and PD groups for 21ml swallow but 10ml bolus splitting was observed more frequent in PD (compared to HC).

Descriptive analysis showed differences in oral, oropharyngeal and pharyngeal phases in patients with PD (Table 3). In PD group the oropharyngeal transit time ranged from 0.32 msec to 1.28 msec while HC the variation was only of one msec. Similar range variations were also observed for pharyngoesophageal and esophageal transit time, though the group-means were non-significantly different. Duration of tongue wave (lingual wave) for bolus movement in oral phase varied in HC group higher as compared to PD (range HC = 1.47, PD = 1.00).

Qualitatively early tongue positioning, multiple lingual-wave efforts, delay in posterior-push, and post-swallow residue was observed in individuals with PD during oral phase (Table 2). In oropharyngeal phase slow velar-elevation or release, incomplete-velar-closure, swallow-response-delay (reflex), delayed transit time, post-swallow-residue and multiple residue-swallow-efforts were noted. One of the PD patients had multiple oropharyngeal-propulsion efforts. Nasal regurgitation was not observed in any of the subjects (neither HC nor PD).

Pharyngeal phase involved differences in PD patients for posterior wall peristalsis, transit-time, tongue-root hyoid-bone coordination, epiglottic-closure, laryngeal-closure, post-swallow residue and residue-swallow-efforts. Resuming post-swallow breathing coordination during oesophageal bolus transit was visible with epiglottic-arytenoid-movement or opening (Figure 1, A). It was observed that two of the PD patients had ‘bolus residue stuck on epiglottic dorsal wall’ during post-swallow breathing (when epiglottis and arytenoids were open) for multiple 10ml boluses (Figure 1, B).

4. Discussion

The aim of the study was to evaluate presence of (if any) subtle oromotor signs that may support early intervention and prevent late stage dysphagia complications in PD. During this study MRI dynamic imaging was done using saline bolus (water like consistency) with two volume sizes to unfold the swallowing mechanism in patient diagnosed with PD, when clinically there were no significant signs of dysphagia. In present study, early signs of dysphagia in PD were elaborated with T2 weighted dynamic MR images visualising soft tissue contrast for tongue movement (tip, dorsum and base), velopharyngeal sphincter action, pharyngeal propulsion, epiglottic inversion, laryngeal elevation, pharyngeal peristalsis and respiratory coordination²⁸. Findings of slow-velar closure, delayed backward propulsion, multiple lingual-efforts in PD suggested hesitation of motor-execution or motor rigidity²⁹ when corroborated to oropharyngeal coordination (delayed transit-time, post-swallow residue, multiple residue-swallow-efforts) may be attributed to locus coeruleus (brainstem) and/or overall sensorimotor control (including limb-motor)^{30,31}.

Bolus splitting differences in PD and healthy control for 21ml and 10 ml volume is in concordant to previous studies though involving different techniques^{13,32}. In present study mean group comparison does not show statistical difference for lingual wave (oral phase) though multiple efforts to position the bolus for backward propulsion indicated motor hesitation, rigidity and bradykinesia⁶. Reverse (forward) tongue thrust was observed in three PD patients suggested altered oromotor control in asymptomatic dysphagia stage^{30,31}.

Post-swallow oral residue in posterior oral cavity may be attributed to tongue-rigidity, inadequate pressure against palate and sensorimotor control³³. These difficulties with bolus control in oral phase

and premature loss to the pharynx in early PD are attributed to locus coeruleus³⁰ or nor-adrenergic mechanisms in brainstem^{30,31}. Delayed velar raising and inadequate velar closure before initiation of backward propulsion showed incoordinated muscular rhythm in six patients. In PD the tongue function in bolus formation have been reported to be associated with oropharyngeal transit time^{31,34}. In present study oropharyngeal transit time (as defined Namasivayam-MacDonald)³⁵ was increased in many patients with PD though mean group comparison could not reach significant difference. It may be clarified with large variation of transit-time in PD group (0.64 to 2.25 msec). Swallow response (reflex) delay in oropharyngeal phase and increased transit time has been ascribed to brainstem degenerative changes^{36,37,38}. It may also be the altered sensory feedback modifying the brainstem reflexes of oropharynx and oesophagus^{38,40}. Delayed bolus transport to pharynx with altered pharyngeal peristaltic movement may be excitatory-inhibitory reflex rhythm modification³⁸ as early marker in PD^{40,41}. These brainstem reflex rhythms might improve with cervical electric stimulation therapies⁴².

Differential diagnosis of swallowing phases and subtle associated signs in preclinical stage may support tailoring treatment strategies in PD (Figure 1, B). Differentiation oromotor signs in clinical stages may also facilitate optimizing the dopamine replacement therapies⁴³ and planning the site of deep brain stimulation⁴⁴. Muscle-strengthening, movement-range and sensory-perceptual exercises improve lingual-wave delay and/or bolus control in oral phase^{5,45} due central-peripheral mechanisms instead of muscular changes⁴⁶. Intensive voice treatment (LSVT) targeting tongue root movement may improve coordination between breathing and swallowing or airway protection⁴⁷. Customizing the management depending on visualized deficit signs will facilitate optimal management for example (i)patients with velar-closure delay/incomplete, if intervened with velopharyngeal sensory stimulation or muscle strength exercises; (ii)patients with oropharyngeal transit delay may be guided with muscle-coordination and perceptiomotor reflex stimulation and (iii)in cases of incoordinated epiglottic opening, voluntary cough (expiratory muscle strength training) may help to eject and decrease chance of penetration / aspiration⁵.

Incoordinated breathing pattern, hesitant motor initiation, inadequate oropharyngeal clearance and pharyngeal residue were potential aspiration risks observed in the study which may have remained underdiagnosed⁴⁸. These signs were unnoticed by themselves (patients) and could not be assessed with available standardized clinical examination (SDQ and CADN). MDS-UPDRS part II (Motor experiences of daily living) and MDS-UPDRS part III (Motor examination) mean scores of PD group (Table 1) disclose mild stage of disease⁴⁹. It was discordant with oromotor signs, demonstrating the preclinical empirical-evidence for diagnosis and intervention. It necessitates incorporating detailed examination protocols for early detection and prevention of dysphagia or aspiration in PD. MDS-UPDRS part III examines overall severity, suggesting the impairment of cortico-striatal loops as key

phenomenon for motor symptoms in PD^{31,50} where oromotor subtle information may characterize to such changes³⁰ that are non-differentiable in present tool, further designate that all the patient with PD even in early stages, need the extensive assessment of these functions.

Future animal studies and human studies with bigger sample, may facilitate correlation of oromotor function with neural-degeneration. Expanding differences in boluses consistency and texture during swallowing with thickened purees (semisolids with varying density) and mastication pattern with water-rich fruits may further unfold asymptomatic stage of dysphagia in early PD. Dynamic studies for the physiological differences, tolerance, residue and aspiration due to increased/decreased texture-cohesion or surface-tension may support variation assessment in the cohort. Laryngotracheopulmonary aspiration (aryepiglottic, ventricular and vocal folds closure)⁵¹ may further be elaborated revealing airway protection and risks.

Advantages

All the patient with PD were asymptomatic clinically and reported no problem in swallowing still many of them were at risk of dysphagia and aspiration, the preclinical and prediagnostic phase⁴⁸. Visualization of subtle oromotor signs (with dMRI) which were not accounted with clinical test (SDQ, CADN, UPDRS-MDS), facilitate the early intervention. The study enabled standardizing the non-invasive tool (dynamic MRI) that overcomes the limitations of clinical gold standard technique of VFS with barium²⁷, patient specific medical contraindication for radioactive drug and radiation exposure (limiting evaluation sessions). As compared to FEES studies it benefits to assess oral and oropharyngeal signs in early PD. It explicitly discriminated all the phases and qualitatively elaborate signs during swallowing for customized appropriate optimal management. In future it may facilitate the differential diagnosis of Parkinson plus syndrome in early stages^{51,52}.

Limitations

It was pilot study with small sample (though with sound methodology), resulting in few limitation of the study. The study could not differentiate patient subgroups with PD stages (H&Y 1, 1.5, 2 and 2.5) or patients with and without dysphagia risk-signs. Dynamic MRI constraints in swallowing assessment are: (a) supine position in some cases, it may be awkward or unnatural position for water-intake (b) it may not fully represent actual situation, though it has been reported as noninterfering with assessment^{28,53,54}; (c) may not be feasible in medically unstable, disoriented, or uncooperative patients like VFS and FEES; (d) objectifying the overlapping phases of swallowing; (e) patients with MRI contraindications cannot be evaluated.

5. Conclusion

Findings show that PD patients in early stages (<2.5 H&Y) are clinically asymptomatic (the prediagnostic phase) where subtle oromotor signs are detected with dynamic MRI, a non-invasive tool (without any irradiation). The uncoordinated airway dynamics before, during, and after swallowing envisage the risk of dysphagia and aspiration. Objective early diagnosis will facilitate the customized optimal remediation, preventing life threatening events and may in future unfold prodromal oromotor signs of airway, aspiration and dysphagia in PD.

References:

1. Leopold NA, Kagel MC. Laryngeal deglutition movement in Parkinson's disease. *Neurology* 1997; 48(2):373-376.
2. Olthoff A, Carstens PO, Zhang S, von Fintel E, Friede T, Lotz J. Evaluation of dysphagia by novel real-time MRI. *Neurology* 2016;87:1–7. doi: 10.1212/WNL.0000000000003337
3. Keage M, Delatycki M, Corben L, Vogel A. A systematic review of self-reported swallowing assessments in progressive neurological disorders. *Dysphagia* 2015;30(1):27-46. doi:10.1007/s00455-014-9579-9.
4. Manor Y, Giladi N, Cohen A, Fliss DM, Cohen JT. Validation of a swallowing disturbance questionnaire for detecting dysphagia in patients with Parkinson's disease. *Mov Disord.* 2007;22(13):1917-21.
5. Kwon M, Lee JH. Oro-Pharyngeal Dysphagia in Parkinson's Disease and Related Movement Disorders. *J Mov Disord.* 2019;12(3):152-160. doi: 10.14802/jmd.19048.
6. Umemoto G, Yoshio T, Akio K, Hirokazu F, Toshihiro K. Impaired food transportation in parkinson's disease related to lingual bradykinesia. *Dysphagia* 2011; 26:250–255. DOI 10.1007/s00455-010-9296-y
7. Ali GN, Wallace KL, Schwartz R, DeCarle DJ, Zagami AS, Cook IJ. Mechanisms of oral-pharyngeal dysphagia in patients with Parkinson's disease. *Gastroenterology* 1996;110:383–92
8. Suttrup I, Warnecke T. Dysphagia in Parkinson's Disease. *Dysphagia* 2016;31(1):24-32. doi:10.1007/s00455-015-9671-9.
9. Marras C, Canning CG, Goldman SM. Environment, lifestyle, and Parkinson's disease: Implications for prevention in the next decade. *Mov Disord.* 2019;34(6):801-811. doi: 10.1002/mds.27720.
10. Tangney CC. Diet to beat the odds of prodromal Parkinson's disease? *MovDisord.* 2019;34(1):2-3. doi: 10.1002/mds.27520.
11. Friederich A, Flinspach A, Suenkel U, Eschweiler GW, Greulich K; TREND study team, Maetzler W, Berg D, Heinzel S. Prodromal features of Parkinson's disease: Self-reported symptoms versus clinically assessed signs. *Mov Disord.* 2019; 34(1):144-146. doi: 10.1002/mds.27539.

12. Sung HY, Kim JS, Lee KS, Kim YI, Song IU, Chung SW, Yang DW, Cho YK, Park JM, Lee IS, Kim SW, Chung IS, Choi MG. The prevalence and patterns of pharyngoesophageal dysmotility in patients with early stage Parkinson's disease. *Mov Disord.* 2010; 25(14):2361-8.
13. Jones CA, Hoffman MR1, Lin L, Abdelhalim S, Jiang JJ, McCulloch TM. Identification of swallowing disorders in early and mid-stage Parkinson's disease using pattern recognition of pharyngeal high-resolution manometry data. *Neurogastroenterol Motil.* 2018;30(4):e13236. doi:10.1111/nmo.13236.
14. Kalia LV, Lang AE. Parkinson's disease. *Lancet* 2015; 386(9996):896-912. doi: 10.1016/S0140-6736(14)61393-3.
15. Yamamoto T, Inoguchi H, Kandori A, Murata M. Assessment of a new magnetic device to monitor swallowing in Parkinson's disease. *J Neurol Neurophysiol* 2015, 6:1. doi:10.4172/2155-9562.1000267
16. Banno H, Katsuno M, Suzuki K, Tanaka S, Suga N, Hashizume A, et al. Swallowing markers in spinal and bulbar muscular atrophy. *Annals of Clinical and Translational Neurology* 2017; 4(8): 534–543. doi: 10.1002/acn3.425
17. Morishima Y, Chida K, Watanabe H. Estimation of the dose of radiation received by patient and physician during a videofluoroscopic swallowing study. *Dysphagia* 2016; 31(4):574-8. doi:10.1007/s00455-016-9718-6.
18. Hashimoto H, Hirata M, Takahashi K, Kameda S, Katsuta Y, Yoshida F, Hattori N, Yanagisawa T, Palmer J, Oshino S, Yoshimine T, Kishima H. Non-invasive quantification of human swallowing using a simple motion tracking system. *Sci Rep.* 2018;8(1):5095. doi: 10.1038/s41598-018-23486-0.
19. Zarzour JG, Johnson LM, Canon CL. Videofluoroscopic swallowing study examination: an overview of fluoroscopic imaging and a perspective on radiation exposure. *Perspectives of the ASHA Special Interest Groups* 3(13), 5-12. doi:10.1044/persp3.SIG13.5
20. Fukuoka T, Ono T, Hori K, Wada Y, Uchiyama Y, Kasama S, Yoshikawa H, Domen K. Tongue pressure measurement and videofluoroscopic study of swallowing in patients with Parkinson's Disease. *Dysphagia* 2018; 8. doi: 10.1007/s00455-018-9916-5.
21. Wakasugi Y, Yamamoto T, Oda C, Murata M, Tohara H, Minakuchi S. Effect of an impaired oral stage on swallowing in patients with Parkinson's disease. *J Oral Rehabil.* 2017;44(10):756-762. doi:10.1111/joor.12536.
22. Molfenter SM, Brates D, Herzberg E, Noorani M, Lazarus C. The Swallowing Profile of Healthy Aging Adults: Comparing Noninvasive Swallow Tests to Videofluoroscopic Measures of Safety and Efficiency. *J Speech, Language, and Hearing Research* 2018(61); 1603-1612. doi:10.1044/2018_JSLHR-S-17-0471
23. MDS. Unified Parkinson's disease Rating Scales (MDS-UPDRS). Chicago, USA: International Parkinson and Movement Disorder Society 2008; pp 1-32.

https://www.movementdisorders.org/MDS-Files1/PDFs/Rating-Scales/MDS-UPDRS_English_FINAL.pdf

24. Vogel AP, Rommel N, Sauer C, Horger M, Krumm P, Himmelbach M, Synofzik M. Clinical assessment of dysphagia in neurodegeneration (CADN): development, validity and reliability of a bedside tool for dysphagia assessment. *J Neurol*. 2017;264(6):1107-1117. doi: 10.1007/s00415-017-8499-7.
25. Tanaka T, Oda M, Nishimura S, Kito S, Wakasugi-Sato N, Kodama M, Kokuryo S, Habu M, Miyamoto I, Yamashita Y, Aso A, Sadasue K, Nagashima R, Tominaga K, Yoshioka I, Morimoto Y. The use of high-speed, continuous, T2-weighted magnetic resonance sequences and saline for the evaluation of swallowing. *Oral Surg Oral Med Oral Pathol Oral Radiol*. 2014;118(4):490-496. doi:10.1016/j.oooo.2014.05.014.
26. Aydogdu I, Kiylioglu N, Tarlaci S, et al. Diagnostic value of “dysphagia limit” for neurogenic dysphagia: 17 years of experience in 1278 adults. *Clin Neurophysiol* 2015; 126: 634–643.
27. Gramigna GD. How to perform video-fluoroscopic swallowing studies. *GI Motility online*, 2006. doi:10.1038/gimo95
28. Olthoff A, Zhang S, Schweizer R, Frahm J. On the physiology of normal swallowing as revealed by magnetic resonance imaging in real time. *Gastroenterol Res Pract*. 2014; 493174. doi:10.1155/2014/493174
29. Baijens LW, Speyer R. Effects of therapy for dysphagia in Parkinson's disease: systematic review. *Dysphagia* 2009;24(1):91-102. doi: 10.1007/s00455-008-9180-1.
30. Cullen KP, Grant LM, Kelm-Nelson CA, Brauer AFL, Bickelhaupt LB, Russell JA, Ciucci MR. *Pink1* *-/-* Rats show early-onset swallowing deficits and correlative brainstem pathology. *Dysphagia* 2018; 33(6):749-758. doi: 10.1007/s00455-018-9896-5.
31. Yang KM, Blue KV, Mulholland HM, Kurup MP, Kelm-Nelson CA, Ciucci MR. Characterization of oromotor and limb motor dysfunction in the DJ1 *-/-* model of Parkinson disease. *Behav Brain Res*. 2018;339:47-56. doi: 10.1016/j.bbr.2017.10.036.
32. Wang CM, Shieh WY, Weng YH, Hsu YH, Wu YR. Non-invasive assessment determine the swallowing and respiration dysfunction in early Parkinson's disease. *Parkinsonism Relat Disord*. 2017;42:22-27. doi: 10.1016/j.parkreldis.2017.05.024.
33. Minagi Y, Ono T, Hori K, Fujiwara S, Tokuda Y, Murakami K, Maeda Y, Sakoda S, Yokoe M, Mihara M, Mochizuki H. Relationships between dysphagia and tongue pressure during swallowing in Parkinson's disease patients. *J Oral Rehabil*. 2018;45(6):459-466. doi: 10.1111/joor.12626.
34. Hiraoka A, Yoshikawa M, Nakamori M, et al. Maximum tongue pressure is associated with swallowing dysfunction in ALS patients. *Dysphagia* 2017; 32: 542–547
35. Namasivayam-MacDonald AM, Barbon CEA, Steele CM. A review of swallow timing in the elderly. *Physiology & Behavior* 2018,184; 12–26.

36. Babaei A, Shaker R. Emergence of deglutology: a transdisciplinary field. *Clin Gastroenterol Hepatol.* 2014;12(12):2046-8. doi:10.1016/j.cgh.2014.08.031.
37. Ertekin C, Tarlaci S, Aydogdu I, Kiylioglu N, Yuceyar N, Turman AB, Secil Y, Esmeli F. Electrophysiological evaluation of pharyngeal phase of swallowing in patients with Parkinson's disease. *Mov Disord.* 2002; 17(5):942-9.
38. Lang IM. Brain stem control of the phases of swallowing. *Dysphagia* 2009;24(3):333-48. doi:10.1007/s00455-009-9211-6.
39. Mu L, Sobotka S, Chen J, Su H, Sanders I, Nyirenda T, Adler CH, Shill HA, Caviness JN, Samanta JE, Sue LI, Beach TG; Arizona Parkinson's Disease Consortium. Parkinson disease affects peripheral sensory nerves in the pharynx. *J Neuropathol Exp Neurol.* 2013; 72(7):614-23. doi:10.1097/NEN.0b013e3182965886.
40. Fasano A, Visanji NP, Liu LW, Lang AE, Pfeiffer RF. Gastrointestinal dysfunction in Parkinson's disease. *Lancet Neurol.* 2015; 14(6):625-39. doi:10.1016/S1474-4422(15)00007-1.
41. Polychronis S, Dervenoulas G, Yousaf T, Niccolini F, Pagano G, Politis M. Dysphagia is associated with presynaptic dopaminergic dysfunction and greater non-motor symptom burden in early drug-naïve Parkinson's patients. *PLoS One* 2019; 14(7):e0214352. doi:10.1371/journal.pone.0214352.
42. Cai Y, Reddy RD, Varshney V, et al. Spinal cord stimulation in Parkinson's disease: a review of the preclinical and clinical data and future prospects. *Bioelectron Med* 2020; 6, 5. <https://doi.org/10.1186/s42234-020-00041-9>
43. Norel R, Agurto C, Heisig S, Rice JJ, Zhang H, Ostrand R, Wacnik PW, Ho BK, Ramos VL, Cecchi GA. Speech-based characterization of dopamine replacement therapy in people with Parkinson's disease. *npj Parkinsons Dis.* 2020; 6, 12. doi: org/10.1038/s41531-020-0113-5
44. Robertson LT, St George RJ, Carlson-Kuhta P, Hogarth P, Burchiel KJ, Horak FB. Site of deep brain stimulation and jaw velocity in Parkinson disease. *J Neurosurg.* 2011; 115(5):985-94. doi:10.3171/2011.7.JNS102173.
45. Ciucci MR, Schaser AJ, Russell JA. Exercise-induced rescue of tongue function without striatal dopamine sparing in a rat neurotoxin model of Parkinson disease. *Behav Brain Res.* 2013; 252:239-45. doi:10.1016/j.bbr.2013.06.004.
46. Glass TJ, Kelm-Nelson CA, Szot JC, Lake JM, Connor NP, Ciucci MR. Functional characterization of extrinsic tongue muscles in the Pink1^{-/-} rat model of Parkinson disease. *PLoS ONE* 2020; 15(10): e0240366. <https://doi.org/10.1371/journal.pone.0240366>
47. Russell JA, Ciucci MR, Connor NP, Schallert T. Targeted exercise therapy for voice and swallow in persons with Parkinson's disease. *Brain Res.* 2010; 1341:3-11. doi: 10.1016/j.brainres.2010.03.029.
48. Noyce AJ, Lees AJ, Schrag AE. The prediagnostic phase of Parkinson's disease. *J NeurolNeurosurg Psychiatry.* 2016;87(8):871-8. doi: 10.1136/jnnp-2015-311890.

49. Martínez-Martín P, Rodríguez-Blázquez C, Mario Alvarez, Arakaki T, Arillo VC, Chaná P, Fernández W, Garretto N, Martínez-Castrillo JC, Rodríguez-Violante M, Serrano-Dueñas M, Ballesteros D, Rojo-Abuin JM, Chaudhuri KR, Merello M. Parkinson's disease severity levels and MDS-Unified Parkinson's Disease Rating Scale. *Parkinsonism Relat Disord.* 2015; 21(1):50-4. doi:10.1016/j.parkreldis.2014.10.026.
50. Sala A, Caminiti SP, Presotto L, Premi E, Pilotto A, Turrone R, Cosseddu M, Alberici A, Paghera B, Borroni B, Padovani A, Perani D. Altered brain metabolic connectivity at multiscale level in early Parkinson's disease. *Sci Rep.* 2017; 7(1):4256. doi: 10.1038/s41598-017-04102-z.
51. Warnecke T, Vogel A, Ahring S, Gruber D, Heinze HJ, Dziewas R, Ebersbach G, Gandor F. The Shaking Palsy of the Larynx-Potential Biomarker for Multiple System Atrophy: A Pilot Study and Literature Review. *Front Neurol.* 2019;10:241. doi: 10.3389/fneur.2019.00241.
52. Palma JA, Kaufmann H. Treatment of autonomic dysfunction in Parkinson disease and other synucleinopathies. *Mov Disord.* 2018; 33(3):372-390. doi:10.1002/mds.27344.
53. Amin MR, Lazarus CL, Pai VM, Mulholland TP, Shepard T, Branski RC, Wang EY. 3 Tesla turbo-FLASH magnetic resonance imaging of deglutition. *Laryngoscope* 2012;122(4):860-4. doi:10.1002/lary.22496.
54. Zhang S, Olthoff A, Frahm J. Real-Time Magnetic Resonance Imaging of Normal Swallowing. *J Magn. Reson. Imaging* 2012;35:1372–1379. doi: 10.1002/jmri.23591

Figures

Figure 1(A) Anatomical structures visualized with dynamic MRI during swallowing and breathing

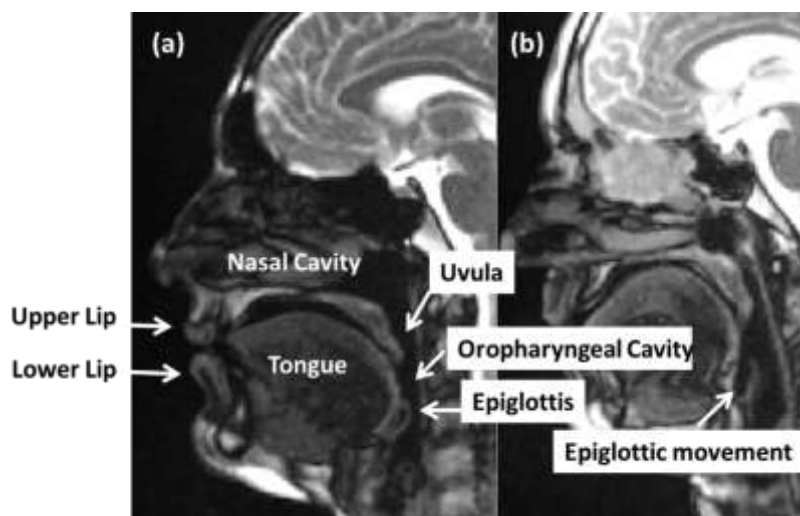
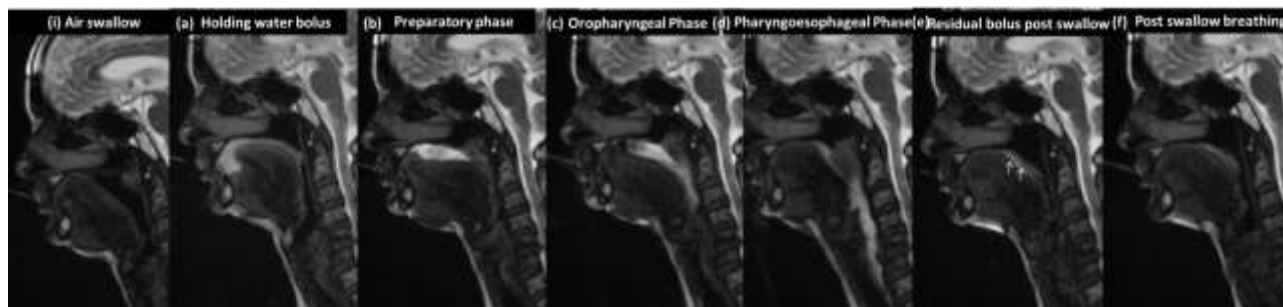


Figure 1(B) Swallowing phases and signs of dysphagia in subject with Parkinson's disease (2D slices from dynamic MRI)



Tables

Table 1: Clinical Scores Observed in PD patients (n = 14)

Mean Disease Duration		MDS-UPDRS (Part II)		MDS-UPDRS (Part III)		H&Y	
Mean	SD	Mean	SD	Mean	SD	Mean	SD
1.75	1.5	15.25	0.40	21.22	1.50	1.81	0.92
Distribution of scores (percentage of individuals)							
H&Y		SDQ		CADN			
≤ 2	>2	< 11 scores	≥11 scores	0 score	1 score	2 score	
100	0	100	0	35.71	64.28	0	

Table2: Dysphagia Signs Observed in PD patients with dynamic MRI (n = 14; frequency of occurrence in percentage)

S. No.	Abnormal Signs	No / Normal (0)	Mild (1)	Moderate (2)	Severe (3)
1	Labial closure	85.71	14.28	0	0
2.	Tongue position	28.57	7.14 (delayed) 50 (multiple efforts)	14.28	0
3.	Bolus placement	50 (7)	50 (7)	0	0
4.	Velopharyngeal closure	42.85 (6)	14.28 (2)	42.86 (6)	0
13.	Swallow reflex delay	53.33 (7)	33.28 (5)	14.28 (2)	0
14.	Oro-pharyngeal propulsion	33.28 (5)	53.33 (7)	14.28 (2)	0
	Oropharyngeal tiredness during last two 10ml boluses	78.57 (11)	21.43 (3)	0	0
7.	Epiglottic movement	78.57 (11)	21.43 (3)	0	0
	Residue	33.28 (5)	21.43 (3)	33.28 (5)	14.28 (2)
15.	Posterior tongue		21.43 (3)		
16.	Oropharangeal			33.28 (5)	
17.	Esophageal				14.28 (2)
	Post-swallow Clearance				
18.	Residue / Dry / saliva	33.28 (5)	21.43 (3)	38.15(5)	7.14 (1)

19.	Residue clearing efforts	42.86	28.43	14.28	14.28
	Penetration				
20.	Premature loss of bolus	85.71	7.14	7.14	0
21.	Nasal regurgitation	100	0	0	0
22.	Laryngeal aspiration	100	0	0	0
	Other observations				
23.	Coordination of velopharyngeal-laryngeal movements	7.14	64.28	28.43	0
24.	Pre-swallow Saliva-spooling in oral cavity	85.71	14.28	0	0
25.	Excessive Saliva (sialorrhea or drooling)	100	0	0	0
25.	Pre-swallow articulatory posture	78.57	14.28	7.14	0
26.	Velum-Epiglottic-Laryngeal posture during breathing	92.86	7.14	0	0

Scoring was done as four-point scale with zero (0) as - no abnormality / Normal, one (1)- Mildly affected, two (2)- Moderately affected, and three (3) as Severely affected. [**Inspired by VFS Worksheet for Swallowing (VEWS) Video Swallow/Modified Barium Swallow (MBS) VA Boston Healthcare (Gramigna, 2006)*]

Table 3: Descriptive findings of dynamic MRI parameters (PD n = 14; HC = 6)

Parameters	Group	Mean, SD	Mode	Range	Minimum	Maximum
Tongue wave	PD	1.42, 0.38	0.96	1.00	0.96	1.96
	HC	1.42, 0.55	0.96	1.47	0.96	2.43
Velar closure	PD	0.63, 0.36	0.32	0.96	0.32	1.28
	HC	0.32, 0.10	0.32	0.10	0.32	0.33
Oropharyngeal transit	PD	1.25, 0.47	0.96	1.61	0.64	2.25
	HC	0.90, 0.28	0.64	0.64	0.64	1.28
Pharyngoesophageal transit	PD	0.71, 0.24	0.64	0.96	0.32	1.28
	HC	0.68, 0.12	0.64	0.32	0.64	0.96
Esophageal transit	PD	0.70, 0.27	0.64	0.96	0.32	1.28
	HC	0.62, 0.04	0.64	0.10	0.54	0.64