

COVID-19 European regional tracker

Asjad Naqvi^{1,2,*}

¹Research Scholar, Advancing Systems Analysis (ASA), International Institute for Applied Systems Analysis (IIASA), Laxenburg, 2361, Austria

²Assistant Professor, Department of Socioeconomics, Vienna University of Economics and Business (WU), Vienna, 1020, Austria

*Corresponding author: Asjad Naqvi (naqvi@iiasa.ac.at)

ABSTRACT

This Tracker presents data on daily COVID-19 cases at the sub-national level for 26 European countries from January 2020 till present. Country-level data sources are identified and processed to form a homogenized panel at the NUTS 3 or NUTS 2 level, the two lowest standardized administrative units of Europe. The strengths and weaknesses of each country dataset are discussed in detail. The raw data, spatial layers, the code, and the final homogenized files are provided in an online repository for replication. The data highlights the spatial distribution of cases both within and across countries that can be utilized for a disaggregated analysis on the impacts of the pandemic. The Tracker is updated monthly to expand its coverage.

Background & Summary

The COVID-19 European Regional Tracker (henceforth referred to as the Tracker)¹ collates sub-national information for cumulative and daily reported COVID-19 cases for 26 countries in Europe starting from 15th January 2020 till present. Data sources of each country are discussed in detail, including their strengths and weaknesses, and the raw country-level files are provided in an online repository. Additional effort has been put into homogenizing this data at the NUTS 3 level for all countries in the Tracker. For two countries, Poland and Greece, the complete data is only available at the NUTS 2 level. NUTS stands for Nomenclature of Territorial Units for Statistics and represent standardized administrative units defined by the European Commission for reporting various regional statistics on Europe.² The reason for creating a homogenized dataset at the NUTS level is to allow the Tracker to be easily merged with other regional datasets. For example, Eurostat, the official statistical agency of the European Commission³, provides a host of economic, demographic, health and other indicators. In addition to this, regional data from national-level statistical agencies in European countries mostly utilize NUTS definitions. Furthermore, several recent global-level datasets, like Google mobility trends⁴ or the Facebook Social Connectedness Index⁵, have structured their regional data around NUTS regions for European countries.

COVID-19 cases exploded in Europe around early March 2020. At the center of this spread were the regions of North Italy⁶ and the ski resort of Ischgl in the western part of Austria.⁷ From this point onward, the virus quickly spread across the European continent, resulting in a rapid increase in cases and deaths, and alarming governments that implemented stringent lockdown measures including border closures, reductions in mobility, to shutting down the economy.⁸ While the virus was mostly contained during the summer of 2020, a resurgence in cases in the Fall of 2020 resulted in a massive second wave that completely overshadowed the first wave in terms of cases and deaths. In order to contain the virus, a second round of lockdown measures were put in place around October 2020.⁹ In early 2021, the detection of more infectious virus variants, and a slower-than-expected vaccine roll-out in Europe prompted countries to further extend their lockdown measures. As Figure 1 shows that no other continent has been impact by the virus as much as Europe, which still has a large share in global cases and deaths.

A unique feature of the COVID-19 pandemic is the amount of knowledge and data that is constantly being generated to understand how this event unfolds. For a high-income region like Europe, the quality of information that is made available on a daily basis is exceptionally high as compared to the rest of the world. Furthermore, several innovative datasets have appeared since the start of the pandemic that collect unique COVID-19 related information. For example, the Oxford COVID-19 Government Response Tracker¹⁰ and the Complexity Science Hub (CSH) Tracker¹¹ evaluate daily policy changes for a host of indicators for all countries of Europe, and their coverage extends to the rest of the world as well. Our World in Data (OWID), a website that curates various global data sets, has produced a tracker on COVID-19 tests performed¹² and is currently leading the efforts to document the vaccine roll-out across the globe. Google has released information how mobility is evolving over time⁴ and Facebook has released data on how connected regions are with each other.⁵ Various other data sources can be viewed on the Oxford COVID-19 Super-Tracker website (<https://supertracker.spi.ox.ac.uk/policy-trackers/>)

43 that has catalogued over a hundred different projects.¹³

44 In Europe, almost all countries provide information through interactive dashboards, maps, and data visualizations. Before
45 October 2020, COVID-19 information for European countries was collected daily by the European Centre for Disease Prevention
46 and Control (ECDC), and NUTS 2 level maps were regularly released to track regional trends.¹⁴ In November 2020, ECDC
47 decided to stop daily updates and switched to aggregated weekly reporting interval of NUTS-2 or higher level data. Since
48 March 2021, country-level daily data is again available, but currently the weekly situation reports (<https://www.ecdc.europa.eu/en/geographical-distribution-2019-ncov-cases>) are the main focus.¹⁵ Since ECDC was the
49 official source of COVID-19 related information for Europe, the reduction in the frequency of data availability resulted in a
50 major data gap for tracking how the virus is evolving in the continent. As a result, data aggregation websites like Our World
51 in Data (OWID) (<https://ourworldindata.org/coronavirus>) switched to John Hopkins University COVID-19
52 database (<https://coronavirus.jhu.edu/map.html>) to maintain the daily reporting frequency.¹⁶ On a positive
53 side, in the summer of 2020, almost all European countries increased their efforts to display and share regional data at a daily
54 frequency on various official online platforms.

55 The aim of this Tracker is to identify, collect, and collate various official regional dataset for European countries. This
56 tracker, while providing raw regional-level data, also combines and homogenizes the data at the NUTS 3 or NUTS 2
57 level. This homogenized dataset allows us to explore how the virus spreads in terms of cumulative cases, daily cases,
58 and cases per capita in Europe at a daily resolution. In this Tracker, country-level data sources and their strengths and
59 weaknesses are discussed in detail. Country-wise regional data, and the Stata code that compiles the data is updated on
60 GitHub (<https://github.com/asjadnaqvi/COVID19-European-Regional-Tracker>) approximately every
61 four weeks.¹ Raw and homogenized data files are also provided in the common CSV format which allows users to import the
62 data or replicate the code in other software languages as well.

64 Methods

65 Figure 2 shows the workflow for the Tracker. In the first step, each country's data source is identified together with its spatial
66 unit of analysis. The source can either be official or scraped data depending on how open the country is about sharing its data
67 especially in a machine-readable format. These raw files are saved as part of the Tracker to allow users access to the original
68 information. Data on cases is extracted from all the raw files since this variable is the lowest common denominator that exists
69 for all the countries. The raw data also contains additional variables like, deaths, tests performed, hospitalization rates, and
70 vaccination rates. Sometimes, detailed breakdowns by age groups and gender is also available. These additional variables can
71 be easily extracted from the raw data as well. In the second step, the raw files are homogenized to NUTS 3 2016 boundaries by
72 using official EU correspondence tables. If these are not available, a crosswalk between different administrative boundaries and
73 NUTS 2016 layers is extracted by through a spatial overlay in QGIS (<https://qgis.org/en/site/>), an open-source
74 mapping software. If NUTS 3 data is not available then NUTS 2 boundaries are used, for example in the case of Greece and
75 Poland.

76 Countries in Europe define regions differently, and therefore, making data homogeneous is a challenging task. For
77 consistency, Eurostat, the official agency of the European Union (EU), uses standardized units called Nomenclature of
78 Territorial Units for Statistics or NUTS (<https://ec.europa.eu/eurostat/web/nuts/history>).² NUTS 0
79 represent countries, NUTS 1 are provinces, NUTS 2 broadly represent districts, and NUTS 3 are broadly defined as mun-
80 icipalities or other sub-divisions of districts. Each country independently defines its own administrative units that are
81 mapped onto NUTS regions. Regions below NUTS 3, are referred to as Local Administrative Units (LAUs) (<https://ec.europa.eu/eurostat/web/nuts/local-administrative-units>) that were formerly NUTS 4 and
82 NUTS 5 tiers.¹⁷ Most countries provide data at the LAU level.

84 Table 1 summarizes the regional classifications of countries currently in the Tracker. The table shows the mapping of
85 country-level regions together with the number of administrative units within that regional classification in brackets. The
86 administrative unit at which the data is available is highlighted in bold. For most countries this is at either NUTS 3 level or
87 lower. Two countries, Poland and Greece, are mapped at the NUTS 2 level since data is only available at this resolution for
88 the whole duration of the tracker. United Kingdom (UK) is dealt with as four separate countries: England, North Ireland,
89 Scotland, and Wales. This is because each country has its own COVID-19 dashboard and the centralized COVID-19 database
90 for the UK has put restrictions on bulk data access (<https://coronavirus.data.gov.uk/details/download>).
91 An additional challenge that was faced in creating this Tracker was to navigate the different websites of individual countries
92 that are usually in their native languages. Hence, there were significant time investment costs in translating the websites, and
93 identifying the correct files and the variables.

94 On the data homogenization side, two main challenges exist with the regions-to-NUTS mapping. First, NUTS are re-
95 classified every few years (2003, 2006, 2010, 2013, 2016, 2021), mostly due to demographic changes that can result in boundary
96 shifts, and splitting or merging of regions. Since the epidemic started in 2020, 2016 definitions were in place and therefore the

97 tracker also homogenizes the data to NUTS 2016 boundaries. NUTS 2016 are also the definitions currently used by Eurostat
98 for regional data since currently only 2020 data is available for majority of the indicators. The boundary data is provided
99 by Eurostat's GISCO or the Geographic Information System of the Commission.¹⁸ As of 1st January 2021, the NUTS 2021
100 definitions have come into effect, and countries might switch to reporting on the new boundaries depending on how long the
101 pandemic lasts. While most of the regions remain unchanged, minor shifts in boundaries can result in imperfect matching for
102 some regions. A good example of this is Italy which already started reporting data at the NUTS 2021 boundaries in 2020.
103 These bottom-up aggregation errors are highlighted and discussed in the Technical Validation section together with the extent
104 of the errors. Regardless of the minor matching issues in the homogenized dataset, raw data is also available in case the users
105 prefer to use the original source of information.

106 Second, some countries use different types of administrative divisions for regional tracking of COVID-19 cases that do not
107 have an official correspondence to NUTS classifications. For example, Finland uses Hospital Districts, Greece uses Prefectures,
108 Norway uses Kommunes, and the UK reports information at the Local Authority Districts (LADs). This issue is resolved by
109 overlaying the boundaries of these administrative regions with NUTS 2016 boundaries to generate a spatial region-to-NUTS
110 mapping. For Greece, Norway, and the UK the regions map perfectly to NUTS boundaries while for Finland, small errors
111 persist in some regions. These are also highlighted and discussed in the Technical Validation section.

112 Data Records

113 The data for the tracker has been made publicly available on Zenodo under the Creative Commons Attribution 4.0 International
114 Licence (CC-BY). The latest version of the repository can be accessed using a stable Zenodo DOI: <https://doi.org/10.5281/zenodo.4244878>.¹ The Tracker data in this paper shows the evolution of cases in European regions from January
115 2020 till April 2021. Since the COVID-19 virus started spreading in Europe around March 2020, the panel of the country-regions-
116 date is mostly complete from April 2020 onward. Figure 3 summarizes the exact date range for each country. The GitHub
117 repository (<https://github.com/asjadnaqvi/COVID19-European-Regional-Tracker>) is updated once a
118 month to expand its temporal coverage, and fix errors and bugs if any. But if users want a higher update frequency, all the code
119 and links to the online repositories are also provided on the Tracker page and can be utilized for more frequent updates.
120

121 For each country, two sets of data files are provided. The first set contains the raw data files downloaded from various
122 sources. These files include the records as they exist in the original data including the information on the spatial unit at which
123 the information is released. Most countries provided data at a administrative units below NUTS 3 (see Table 1). Furthermore,
124 most of the raw files contain more information than in the final data set homogenized at the NUTS level which contains
125 cumulative and daily cases information, the baseline variables that exist in all country files. Additional variables in the raw data,
126 for example, include deaths, recovered, tested, hospitalized, and vaccinated. Some countries also provide age and gender-wise
127 breakdowns. Therefore, users of this Tracker can go deeper with their analysis by compiling a finer resolution and more detailed
128 dataset for analysis. The second set are the processed country files that map and convert the raw data into homogenized datasets
129 at the NUTS level. This mapping is done using Stata scripts or dofiles, which which process the data and homogenize the
130 region-to-NUTS mapping. If Stata is not available, the dofiles can be viewed with any generic text editor for the code structure.
131 The code structure is straightforward to read and can be easily converted to other programming languages.

132 The files on GitHub (<https://github.com/asjadnaqvi/COVID19-European-Regional-Tracker>) and
133 Zenodo¹ are sorted in the folder structure shown in Box 1:

Box 1. Folder structure

```
/root/
├── 01_raw
│   ├── <country folders>
│   ├── LAU
│   ├── Eurostat
│   └── OWID
├── 02_dofiles
│   ├── <country>_v*.do
│   ├── COUNTRY_SETUP.do
│   ├── COUNTRY_MERGE.do
│   ├── COUNTRY_GIS_setup.do
│   ├── COUNTRY_GIS_map.do
│   └── COUNTRY_VALIDATION.do
├── 03_GIS
│   └── <various raw and processed shapefiles>
├── 04_master
│   ├── <country>_data.dta
│   ├── <country>_data_original.dta
│   ├── EUROPE_COVID19_master.dta
│   ├── csv_nuts
│   │   ├── <country>_data.csv
│   │   └── EUROPE_COVID19_master.csv
│   ├── csv_original
│   │   └── <country>_data_original.csv
└── 05_figures
    ├── COVID19_EUROPE_cases.png
    ├── COVID19_EUROPE_casespop.png
    ├── COVID19_<countrycode>.png
    └── <other graphs>
```

135

136

137

The folders are described as follows:

138

139

140

141

142

143

144

145

146

• **01_raw** contains miscellaneous country-level files. Each country has its own sub-folder with all the files necessary to generate a clean version of the raw and homogenized data. These folders also include various files that help map region identifiers to NUTS classifications. The raw data itself is saved in a Stata .dta format and the generic .csv file format in the 04_master folder. The LAU folder contains the LAU 2019-to-NUTS 2016 correspondence file² from which several country-level files are extracted where necessary. The Eurostat folder contains the regional population file in Stata format extracted from the demo_r_pjangrp3 data table (https://ec.europa.eu/eurostat/databrowser/view/demo_r_pjangrp3/). For the Tracker, the 2020 regional population values are used except for UK, where due to Brexit regional data information is only available till 2019. OWID folder contains data from the Our World in Data¹² website which is used for validating the Tracker.

147

148

149

150

151

• **02_dofiles** contains the Stata scripts called dofiles for each country, and five additional dofiles that compile, merge, map, and validate the data (see the Code Availability section for details). The dofiles are also version controlled (_v1, _v2, _v3 etc.) to track changes in data sources and data structures. Only the latest dofile for each country is uploaded to the repository. Each country dofile saves the raw data, and processes the raw data to create the homogenized file, both of which are saved in the 04_master folder. See the Code Availability section for details on how to run these files.

152

153

• **03_GIS** contains the raw and processed GIS files. The raw NUTS 0 to NUTS 3 2016 shapefiles are downloaded from Eurostat's GISCO website¹⁸ and processed using the COUNTRY_GIS_setup.do in the **02_dofiles** folder.

154

155

• **04_master** contains the raw and the homogenized country files, and the final dataset **EUROPE_COVID19_master.dta**. The .csv versions of the raw and homogenized files are saved in the csv_original and csv_nuts folders respectively.

156 • **05_figures** contains the maps and figures generated from various dofiles.

157 The main data file “**COVID19_master.dta**” and its .csv version are provided in the 04_master folder. The master files
158 contain the following variables with their description given in brackets:

159	nuts0_id	(country code)
160	nuts2_id	(for Greece and Poland only)
161	nuts3_id	
162	nuts_id	(combined NUTS 2 and NUTS 3)
163	date	
164	cases	(cumulative cases)
165	population	(extracted from Eurostat population file)
166	cases_daily	(daily new cases)
167	cases_daily_pop	(daily new cases per 10,000 population)
168		

169 Table 2 summarizes the individual country sources of raw data. For the 26 countries currently in the Tracker, the table lists
170 their respective departments that collect and disseminate COVID-19 data, links to official COVID-19 dashboards, and links
171 to data repositories that are used to pull the data for this Tracker. The very precise paths are given in the Stata dofile of each
172 country and if Stata is not available, they can be viewed in any text editor. Each country’s raw data files are also saved in the
173 04_master folder with the suffix _original.dta and _original.csv. Please note that these links are also subject to change and for
174 the latest information check the information on GitHub.¹

175 Data for individual countries

176 Data for the 26 countries in the Tracker is briefly discussed below including the challenges:

- 177 • **Austria:** Austria currently provides daily updates at the district (Bezirk) level, a tier below NUTS 3. The data can be
178 downloaded directly from the official website as a zipped file from which the relevant file is extracted and processed.
- 179 • **Belgium:** Belgium provides daily updates and the data file can be read directly from the website. Regions with cases 5 or
180 below are labeled as ≤ 5 for privacy reasons. As a judgement call, to keep the variable numeric, these values have been
181 replaced with 1. Users can refer to the original data or change the data scripts if a different way of dealing with ranges is
182 preferred.
- 183 • **Croatia:** Croatia provides official data in a JSON format which is read directly from the website.
- 184 • **Czechia:** Czechia data is imported directly from the official website for processing.
- 185 • **Denmark:** Denmark releases a daily zipped file which is downloaded manually from the website. The zipped file
186 contains several data files from which the one containing information on cases is used.
- 187 • **Estonia:** Estonia officially releases the data on COVID-19 but in order to maintain privacy, data is only provided in
188 ranges of 10s, for example, 10-20, 20-30, 100-110, etc. In order to make this variable numeric, the mid-points of these
189 ranges are taken, and aggregated at the NUTS 3 level. Using mid-points is a judgement call to make the cases variable
190 numeric. The raw data file contains the original information which can be processed differently if required.
- 191 • **Finland:** The data for Finland is taken from a GitHub repository that scrapes the data and provides it in a JSON format.
192 This is read and parsed directly in Stata. This data is at the Hospital District level which does not perfectly correspond to
193 NUTS 3 boundaries and are approximated using a spatial merge. See Technical validation section for detailed notes.
- 194 • **France:** France provides a comprehensive range of COVID-19 related indicators on its official website. France also
195 switched methodologies for improving the data quality in May 2020. Old data is available online and has been merged
196 with the current data but the quality is poor. Data of territories outside of mainland Europe have been dropped from the
197 Tracker. The file is downloaded manually from the website for processing.
- 198 • **Germany:** Germany’s regional data is provided by the Robert Koch Institute (RKI) and has been of high quality data
199 since the early days of the pandemic. Several repositories of this data exist on GitHub, of which, one has been selected
200 for the Tracker.

- 201 • **Greece:** Greece only releases PDFs which contain information at the prefecture level. This information is downloaded
202 from a GitHub repository that scrapes the PDFs. The data which is at the prefecture level, matches perfectly to NUTS 2
203 boundaries.
- 204 • **Hungary:** Hungary does not officially release any data. A map is uploaded in an image format on the official website
205 which is scrapped daily. This information is retrieved from one of the several GitHub repositories that keep track of cases
206 in Hungary.
- 207 • **Ireland:** Ireland releases regional data on ArcGIS Hub which is downloaded manually for processing. The links are
208 provided in the Stata script.
- 209 • **Italy:** Italy has one of the best data-sharing setup among the European countries. Italy currently provides full docu-
210 mentation and access to their data on their official GitHub page (<https://github.com/pcm-dpc/COVID-19>).
211 The regions defined in the data perfectly match NUTS 2021 definitions but the aggregation to NUTS 2016 has to be
212 approximated for three small island regions since their boundaries were modified. See Technical Validation sector for
213 details.
- 214 • **Latvia:** Latvia updates the data daily which can be downloaded directly from the official website. Regions with cases
215 under 5 are displayed with a range of 1-5 for privacy reasons. This has been replaced with a value of one to keep the
216 variable numeric. The raw file containing the original information can used to process these ranges differently.
- 217 • **Netherlands:** Netherlands data is downloaded directly from the official website for processing.
- 218 • **Norway:** Since Norway is outside of the EU, no consistent information at the NUTS 3 level is available. The Norwegian
219 data is provided at the Kommune level, a tier below NUTS 3. This data is spatially joined with the NUTS 2016 boundaries
220 to create a Kommune-to-NUTS 3 crosswalk which results in a perfect mapping. See the Technical Validation section for
221 details.
- 222 • **Poland:** Poland data is extracted from a GitHub repository that is mapped perfectly to NUTS 2 boundaries. Poland
223 launched its data sharing service relatively recently which currently also provides NUTS 3 level, but it does not have the
224 temporal extent to fit in this Tracker. Minor data errors exist since part of the data is scraped. Please see the Technical
225 Validation section for details.
- 226 • **Portugal:** The official regional data for Portugal has major issues. Data on regions was released on a daily frequency till
227 July 2020, after which, it was switched to a weekly frequency. Currently information is only available on a bi-weekly
228 basis and therefore there are major gaps in the daily cases data. Out of all the countries in the Tracker, Portugal's data is
229 currently the only one that is not at a daily frequency.
- 230 • **Romania:** The official data for Romania is available in JSON format which is converted into a CSV format for processing
231 in Stata.
- 232 • **Slovak Republic:** The data for Slovak Republic is downloaded from a GitHub repository which processes the official
233 data.
- 234 • **Slovenia:** The data for Slovenia is downloaded from a GitHub repository which processes the official data.
- 235 • **Spain:** Spain's data is downloaded directly from the official website.
- 236 • **Sweden:** Sweden releases a file daily which is manually downloaded.
- 237 • **Switzerland:** Switzerland does not have country-wide information available in a centralized place. Instead, a group
238 of independent researchers collate this information from the official websites of the various Cantons, which are also
239 NUTS 3 regions. Therefore the very latest data is not immediately available.
- 240 • **United Kingdom:** The data for UK is not easily accessible. Despite shifting to a new website in the summer of
241 2020, information is only released for 7-day intervals for regions below NUTS 3 in the form of an interactive map
242 (<https://coronavirus.data.gov.uk/details/interactive-map>). Furthermore, the data portal for
243 the UK (<https://coronavirus.data.gov.uk/details/download>) has put significant restrictions on bulk
244 downloading. Therefore, UK is dealt with as four separate countries; England, Scotland, North Ireland, and Wales. Daily
245 regional data has been found only for the following two countries:

- 246 – **England:** In the early days of the pandemic an independent researcher, Tom White (<https://github.com/tomwhite/covid-19-uk-data>), put enormous amounts of effort to collate UK information from various
247 sources. His work was later picked up by ODI Leeds (<https://github.com/odileeds/>) that regularly
248 update the dataset for England. The data is available at the Local Authority Districts (LAD) level using April
249 2019 definitions. LADs aggregate perfectly to NUTS 3 2016 boundaries. See the Technical Validation section for
250 details.
251
- 252 – **Scotland:** Data for Scotland is pulled directly from the Public Health of Scotland website ([https://www.
253 opendata.nhs.scot/dataset/covid-19-in-scotland](https://www.opendata.nhs.scot/dataset/covid-19-in-scotland)). Scotland's data is processed using the
254 same routine as England where LAD April 2019 boundaries are matched to NUTS 3. See the section Technical
255 Validation for details.

256 The following countries – Albania, Bosnia, Bulgaria, Serbia, Lithuania, North Ireland (UK), North Macedonia, Turkey, and
257 Wales (UK), have official NUTS 3 correspondence tables but are not currently in the Tracker since their regional data has not been
258 located. If these countries have to be used, their data can be replaced with country-level indicators to complete the map. For anal-
259 ysis this is still useful as cases normalized by population allow for comparison of regions of various sizes. As a note of caution,
260 the above information and descriptions are subject to change as countries evolve their COVID-19 data sharing strategies. Please
261 check the GitHub page (<https://github.com/asjadnaqvi/COVID19-European-Regional-Tracker>) for
262 the latest updates.

263 Overall data trends

264 Figure 3 shows the data points available for each country. Here one can note major gaps in Portugal, Greece, and Estonia daily
265 cases data but on average the remaining countries are mostly complete. The data version used for this paper has over 500,000
266 data points. Individual NUTS-level cases per 10,000 population are plotted in Figure 4. In this figure we can also observe the
267 difference in normalized daily new cases between the first and the second waves. The spread goes up significantly in the second
268 wave.

269 Figure 5 shows the cumulative distribution of cases and cases per 10,000 population for the data in this Tracker that ranges
270 from January 2020 to April 2021. Here we can immediately observe that larger units in terms of area have more cases overall
271 than smaller ones. If we control for population size then a different picture emerges. For example, it is clear from the cumulative
272 cases per 10,000 population map that Germany managed to insulate itself very well from neighboring countries by enforcing
273 strict border controls and lockdown policies. Despite this, regions on the east side show a slightly higher incidence rate than
274 western and northern Germany. Similarly the western part of Austria, north Italy, Switzerland, and eastern part of France have a
275 much higher cases per capita relative to the remaining regions within these countries. Sweden with its lack of strict lockdown
276 policies also stands out among the Nordic countries. Explanations for these trends are left as research questions. Furthermore,
277 given the daily resolution of the data in the Tracker, these maps can also be checked for variations in the first and the second
278 waves.

279 Technical Validation

280 Three steps have been taken to ensure that veracity and accuracy of the information and to document errors that might occur in
281 the homogenized file.

282 First, since the country-level datasets are official records provided by different government departments of each country,
283 they can be compared with various online dashboards highlighted in Table 2. It is also important to point out that not all
284 countries release the latest data at the regional level. A good example of this is France, that releases a file daily but the regional
285 information is usually two to three days old. Similarly the crowd-sourced data for Switzerland, is back-filled data as information
286 for the different regions (Cantons) is updated. Regardless of these lags, comparison of values with online dashboards is possible
287 for most countries in the Tracker.

288 Second, as discussed earlier, regional data is approximated during the homogenization process for some countries. In order
289 to ensure transparency, Table 3 provides notes for various countries where either data is converted from ranges into unique
290 values (for example, Belgium, Estonia, and Latvia) or boundaries are approximated using a spatial merge (for example, Finland,
291 UK, Norway, and Greece). The *data approximation* error occurs when ranges are converted into unique numerical values. This
292 is a judgement call in order to allow these countries to merge with the remaining files. For Belgium and Latvia, regions with
293 cases less than five are anonymized as <5. These values have been replaced with 1. For Estonia, which only provides data
294 in ranges of 10s, mid values of each range is taken and multiplied with total cases to estimate cases per region, and then the
295 regions are aggregated to NUT 3. Therefore, the data approximation is the highest for Estonia. The raw data and the scripts are
296 available in case users prefer the actual information or have other approximation strategies.

297 For countries which do not have an official correspondence to NUTS regions, a *boundary approximation* is done with
298 a spatial merge by overlaying administrative boundaries with NUTS boundaries. For UK, Norway and Greece, the spatial
299 merge creates a perfect mapping as shown in Figure 5. For Finland, the hospital districts, that are size-wise comparable to
300 NUTS 3 boundaries contains minor errors in some cases since boundaries do not align. In an ideal case scenario, data should be
301 provided at the smallest possible unit that can be aggregated up to various administrative boundaries, as is the case with UK
302 and Norway. The official Finish website (see Table 2) does provide COVID-19 data at the municipality level, a unit below
303 NUTS 3, but accessing the map is not straightforward nor it is clear whether this data can be accessed. On a related note, Italy
304 data is officially released at the NUTS 2021 definitions so mapping to NUTS 2016 definitions do not work perfectly for three
305 regions on an island off mainland Italy. These regions show up as missing on the map. For both the Finnish and Italian regions
306 that do not perfectly match, the number of cases are very small which also keeps the error rate small. Regardless, original
307 administrative units and their data in the raw files and can be used for higher accuracy.

308 Third, since the data is at the regional level, it can be aggregated up to generate country-level totals which can be compared
309 with data aggregation websites like the Our World in Data (OWID) COVID-19 tracker (<https://ourworldindata.org/coronavirus>). OWID is used and referenced almost daily in scientific research and the media and has a major impact
310 of policy discussions. OWID was utilizing country-level information provided by the European Center for Disease Control
311 (ECDC) till November 2020. In November 2020, ECDC announced that it will switch to weekly data releases under The
312 European Surveillance System (TESSy) (<https://covid19-surveillance-report.ecdc.europa.eu/>) where
313 countries directly submit aggregated NUTS 2 level data. As a response OWID switched to the John Hopkins University's (JHU)
314 data repository (<https://coronavirus.jhu.edu/map.html>), a major data source for COVID-19 information at the
315 global level.¹⁶ For validation, both this Tracker and OWID data is merged on a country-date combination and the difference
316 between the daily cases is calculated. Figure 7 plots the difference split by countries and highlights how the match quality goes
317 down after 1 October 2020. After October 2020, the mismatch for most countries increases significantly and persists till today.
318 This highlights two points. First, before October 2020, data was provided by ECDC which was taking information directly
319 from European countries. Since this Tracker is also pulling data from the countries directly, the match is very close with the
320 exception of some outliers. This exercise helps validate the data of this Tracker. Second, since the data source of this Tracker
321 remains the same, while OWID changed its source to a more unverified data set after October 2020, this Tracker provides a
322 more accurate picture of country-level aggregates and also includes regional variation. As of March 2021, ECDC is again
323 providing access to daily country level data but gaps exist between the new data series and the pre-November 2020 updates.¹⁵
324

325 Usage Notes

326 The dataset has been compiled in Stata (www.stata.com), a standard statistical software mostly used in the field of
327 economics. All data including raw files, scripts, and the final data set are provided on GitHub (). Besides the Stata .dta data
328 format, all information is also stored in the generic .csv format allowing the data to be accessed in any software. Annotated
329 Stata scripts, or dofiles are also provided. Stata has an easy-to-interpret syntax structure that can be easily translated into other
330 programming languages.

331 As a caveat, there are two features that Stata cannot handle well. First, is the ability to download files that are redirected
332 from clicks or links on websites. This level of web-scraping works much better in other languages designed for such tasks like
333 R or Python. Second data in JSON format has to be parsed either manually using user-written commands, or via third-party
334 JSON-to-csv converters that are available online. Processing complex data structures like JSON or XML are also easier in other
335 languages.

336 The repository is updated approximately every four weeks including a public release on Zenodo. If users prefer a higher
337 frequency of updates, then the Stata scripts can be used directly to process the files or a more frequent release can be requested
338 as well. Since the aim of the homogenized dataset is to be able to correlated it with existing NUTS level datasets, a monthly
339 frequency is sufficient since European-level regional data takes several weeks or even months to be released.

340 This Tracker can be utilized for a host of different research directions. For example, the Tracker can be mapped onto NUTS-
341 level regional data (<https://ec.europa.eu/eurostat/web/regions/data/database>) released by Eurostat.³
342 This includes various economic, demographic, health, tourism, and labor related indicators some of which also have a monthly
343 or even a weekly frequency. Since data for individual countries is also provided, a detailed country-specific analysis can
344 also be done provided regional or micro data is available for analysis. Other datasets catalogued on the Oxford COVID-19
345 Supertracker¹³ provides a range of interesting information on various policies put in place by countries during the pandemic.
346 The Tracker data can also be combined with several innovative global datasets which contain NUTS-level information for
347 European countries. This, for example, includes Google Mobility trends⁴ or the Facebook Social Connectivity Index.⁵ Since,
348 the data for the Tracker has a Creative Commons Attribution 4.0 International Licence (CC-BY), anyone can access it at any
349 point in time, and it will be regularly updated until the countries stop publishing regional COVID-19 data.

350 Code Availability

351 The latest code to process the files can be downloaded from the Zenodo release¹ or accessed from the GitHub repository
352 (<https://github.com/asjadnaqvi/COVID19-European-Regional-Tracker>). The code is written in Stata
353 versions 15 and higher and these are also recommended for improved functionality with maps and graphs. Data processing can
354 be done in any version.

355 As specified in the Data Records section, the dofiles are in the **/02 dofiles/** folder. Within this folder dofiles exist for each
356 country plus a set of five dofiles that setup, merge, map, and validate the final data file. These files are explained as follows:

- 357 • **COUNTRY_SETUP.do** initializes the code for running the country files. One can run each country file independently
358 as well, but they need the directory structure and packages to be loaded in order to function correctly. Directory and
359 packages can be initialized using the first few lines marked in the beginning of the **COUNTRY_SETUP.do** file. This
360 syntax is as follows:

```
361 clear  
362 global coviddir "<your directory path>/<your directory name>"  
363  
364 * package for maps and correcting map projections  
365 ssc install spmap, replace  
366 ssc install geo2xy, replace  
367  
368 * packages for color schemes  
369 ssc install palettes, replace  
370 ssc install colrspace, replace  
371  
372 * package for replicating plots  
373 net install tsg_schemes, ///  
374 from("https://raw.githubusercontent.com/asjadnaqvi/Stata-schemes/main/schemes/")  
375 set scheme white_w3d, perm  
376  
377 * set the default graph font  
378 graph set window fontface "Arial Narrow"
```

379 Each country .do file is annotated with notes where necessary.

- 380 • **COUNTRY_MERGE.do** combines all the country datasets saved in **04_master** in one file **EUROPE_COVID19 master.dta**.
381 The master file is also saved in the **04_master** folder.
- 382 • **COUNTRY_GIS_setup.do** sets up the GIS layers in Stata format for the combined NUTS regions and for individual
383 countries. A mixed NUTS3 and NUTS2 shapefile is also created accommodate the data from Poland and Greece. The
384 logic can also be applied to add data at the provincial (NUTS 1) or country (NUTS 0) level if one needs to add other
385 countries not in the dataset. This file also extracts shapefiles for individual countries and generates a file used for labeling
386 the individual country maps.
- 387 • **COUNTRY_GIS_map.do** create the maps that are saved in the **05_figures** folder. See Figure 5 for the overall
388 map. Individual country COVID-19 maps can be viewed on GitHub (<https://github.com/asjadnaqvi/COVID19-European-Regional-Tracker>).
- 390 • **COUNTRY_validation.do** collapses the Tracker to a country-date level and merges it with OWID COVID-19 dataset, for
391 validation. This file also produces Figure 7.

392 GitHub and Zenodo files are updated every four weeks. Each Zenodo release is assigned a unique DOI, but the generic
393 DOI: <https://doi.org/10.5281/zenodo.4244878>, will always link to the latest version.¹

394 References

- 395 1. Naqvi, A. COVID-19 European regional tracker. *Zenodo* [10.5281/zenodo.4244878](https://doi.org/10.5281/zenodo.4244878) (2021).

- 396 2. Eurostat. Nomenclature of Territorial Units for Statistics (NUTS). *Website* [https://ec.europa.eu/eurostat/web/nuts/](https://ec.europa.eu/eurostat/web/nuts/background)
397 [background](https://ec.europa.eu/eurostat/web/nuts/background) (2021).
- 398 3. Eurostat. European Statistical Agency. *Website* <https://ourworldindata.org/coronavirus> (2021).
- 399 4. Google. Community mobility reports. *Website* <https://www.google.com/covid19/mobility/> (2021).
- 400 5. Facebook. Data for good: Social Connectedness Index. *Website* [https://dataforgood.fb.com/tools/](https://dataforgood.fb.com/tools/social-connectedness-index/)
401 [social-connectedness-index/](https://dataforgood.fb.com/tools/social-connectedness-index/) (2021).
- 402 6. Eurostat. ECDC statement on the rapid increase of COVID-19 cases in Italy. *Newspaper article* [https://www.ecdc.europa.](https://www.ecdc.europa.eu/en/news-events/ecdc-statement-rapid-increase-covid-19-cases-italy)
403 [eu/en/news-events/ecdc-statement-rapid-increase-covid-19-cases-italy](https://www.ecdc.europa.eu/en/news-events/ecdc-statement-rapid-increase-covid-19-cases-italy) (23 Feb 2020).
- 404 7. Eurostat. Coronavirus: Ischgl resort at heart of Europe's outbreak reopens. *Newspaper article* [https://www.bbc.com/news/](https://www.bbc.com/news/world-europe-52384572)
405 [world-europe-52384572](https://www.bbc.com/news/world-europe-52384572) (12 Oct 2020).
- 406 8. Deutsche Welle (DW). Coronavirus: What are the lockdown measures across Europe? *Newspaper article* [https://www.dw.com/en/](https://www.dw.com/en/coronavirus-what-are-the-lockdown-measures-across-europe/a-52905137)
407 [coronavirus-what-are-the-lockdown-measures-across-europe/a-52905137](https://www.dw.com/en/coronavirus-what-are-the-lockdown-measures-across-europe/a-52905137) (14 April 2020).
- 408 9. Euronews. How hard is the coronavirus second wave hitting in Europe?. *Newspaper article* [https://www.euronews.com/](https://www.euronews.com/2020/11/13/europe-s-second-wave-of-coronavirus-here-s-what-s-happening-across-the-continent)
409 [2020/11/13/europe-s-second-wave-of-coronavirus-here-s-what-s-happening-across-the-continent](https://www.euronews.com/2020/11/13/europe-s-second-wave-of-coronavirus-here-s-what-s-happening-across-the-continent) (13 November 2020).
- 410 10. Oxford. Oxford COVID-19 Government Response Tracker (OxCGRT). *Website* [https://www.bsg.ox.ac.uk/research/](https://www.bsg.ox.ac.uk/research/research-projects/coronavirus-government-response-tracker)
411 [research-projects/coronavirus-government-response-tracker](https://www.bsg.ox.ac.uk/research/research-projects/coronavirus-government-response-tracker) (2021).
- 412 11. Desvars-Larrive, A. *et al.* A structured open dataset of government interventions in response to COVID-19. *Sci. Data* **7**,
413 285, [10.1038/s41597-020-00609-9](https://doi.org/10.1038/s41597-020-00609-9) (2020).
- 414 12. Hasell, J. *et al.* A cross-country database of COVID-19 testing. *Sci. Data* **7**, 345, [10.1038/s41597-020-00688-8](https://doi.org/10.1038/s41597-020-00688-8) (2020).
- 415 13. Oxford. Oxford Supertracker: The global directory for COVID policy trackers and surveys. *Website* [https://www.bsg.ox.ac.](https://www.bsg.ox.ac.uk/research/research-projects/coronavirus-government-response-tracker)
416 [uk/research/research-projects/coronavirus-government-response-tracker](https://www.bsg.ox.ac.uk/research/research-projects/coronavirus-government-response-tracker) (2021).
- 417 14. ECDC. COVID-19 database European Centre for Disease Prevention and Control. *Website* [https://www.ecdc.europa.eu/en/](https://www.ecdc.europa.eu/en/covid-19/data)
418 [covid-19/data](https://www.ecdc.europa.eu/en/covid-19/data) (2021).
- 419 15. ECDC. COVID-19 situation update for the EU and the EEA. *Website* [https://www.ecdc.europa.eu/en/](https://www.ecdc.europa.eu/en/cases-2019-ncov-eueea)
420 [cases-2019-ncov-eueea](https://www.ecdc.europa.eu/en/cases-2019-ncov-eueea) (2021).
- 421 16. Our World in Data. Our World in Data switches to Johns Hopkins University as our main data source for COVID-19 cases
422 and deaths. *Online post* <https://ourworldindata.org/covid-data-switch-jhu> (2020).
- 423 17. Eurostat. Local Administrative Units (LAUs). *Website* [https://ec.europa.eu/eurostat/web/nuts/](https://ec.europa.eu/eurostat/web/nuts/local-administrative-units)
424 [local-administrative-units](https://ec.europa.eu/eurostat/web/nuts/local-administrative-units)
(2021).
- 425 18. GISCO. The Geographic Information System of the Commission - NUTS Statistical Administrative Units Shapefiles.
426 *Website* <https://ec.europa.eu/eurostat/web/gisco/geodata/reference-data/administrative-units-statistical-units/nuts> (2021).

427 **Acknowledgements**

428 I would like to thank the International Institute for Applied Systems Analysis' (IIASA) directors, Albert van Jaarsveld,
429 and Leena Srivastava, and the Director of the Advancing Systems Analysis (ASA) program, Elena Rovenskaya, for their
430 encouragement and continuous support throughout the course of this Tracker. I would also like to thank IIASA for partially
431 funding this project.

432 **Author contributions statement**

433 A.N. set up the Tracker, including identifying the websites and the relevant files, defining the protocols for the workflow and
434 data management, writing the code, and cleaning up the data. A.N. will be responsible for updating the Tracker on a monthly
435 basis till the countries stop reporting their data.

436 **Competing interests**

437 The author declares no competing interests.

438 **Figures & Tables**

Table 1. European regional classifications

Country (NUTS 0)	Code	NUTS 1	NUTS 2	NUTS 3	LAU / Other admin units
Austria	AT	Gruppen von Bundesländern (3)	Bundesländer (9)	Politische Bezirke (35)	Bezirke (94) , Gemeinden (2096)
Belgium	BE	Gewesten/ Régions (3)	Provincies/ Provinces (11)	Arrondissementen/ Arrondissements (44)	Gemeenten/Communes (581)
Croatia	HR	-	Regija (4)	Županija (21)	Gradovi i općine (556)
Czechia	CZ	Území(1)	Regiony soudržnosti (8)	Kraje (14)	Obce (6258)
Denmark	DK	-	Regioner (5)	Landsdele (11)	Kommuner (99)
Estonia	EE	-	-	Maakondade grupid (5)	Linn, vald (79)
Finland	FI	Manner-Suomi, Ahvenanmaa/ Fasta Finland, Åland (2)	Suuraluet / Storområden (5)	Maakunnat / Landskap (19)	Kunnat / Kommuner (311)
France	FR	Zones d'études et d'aménagement du territoire (14)	Régions (27)	Départements (101)	Communes (34970)
Germany	DE	Länder (3)	Regierungsbezirke (38)	Kreise (401)	Gemeinden (11087)
Greece	EL	Geografikes Perioches (4)	Periferies (13)	Periferiakon Enotiton (52)	Topikes Koinotites (6134)
Hungary	HU	Statisztikai nagyrégiók (3)	Tervezési-statisztikai régiók (8)	Megyék + Budapest (20)	Települések (3155)
Ireland	IE	-	Regions (3)	Regional Authority Regions (8)	Local Election Areas (166)
Italy	IT	Gruppi di regioni (5)	Regioni (21)	Provincia (107)	Comuni (7926)
Latvia	LV	-	-	Statistiskie reģioni (6)	Republikas pilsētas, novadi (119)
Netherlands	NL	Landsdelen (4)	Provincies (12)	NUTS3 (40)	Gemeenten (355)
Norway*	NO	-	Landsdeler (7)	Fylker (18)	Kommuner (356)
Poland	PL	Makroregiony (7)	Regiony (17)	Podregiony (73)	Gminy (2478)
Portugal	PT	Continente + Regiões Autónomas (3)	Grupos de Entidades Intermunicipais + Regiões Autónomas (7)	Entidades Intermunicipais + Regiões Autónomas (25)	Freguesias (3098)
Romania	RO	Macroregiuni (4)	Regiuni (8)	Judet + Bucuresti (42)	Comuni + Municipiu + Orase (3181)
Slovenia	SI	-	Kohezijske regije (2)	Statistične regije (12)	Občine (212)
Slovak Republic	SK	-	Oblasti (4)	Kraje (8)	Obce (2927)
Spain	ES	Agrupación de comunidades autónomas (7)	Comunidades y ciudades Autónomas (19)	Provincias + islas + Ceuta, Melilla (59)	Municipios (8131)
Sweden	SE	Grupper av riksområden (3)	Riksområden (8)	Län (21)	Kommuner (290)
Switzerland	CH	-	Grossregionen (7)	Kantone (26)	Gemeinden/Communes (2222)
United Kingdom	UK	Government Office Regions (12)	Counties (41)	Upper tier authorities (UTAs) (179)	Lower tier authorities (LTAs) (317)

Note: Table extracted from the [Eurostat NUTS and National Administrative Units Correspondence](#) page. Number of regions are given in brackets and the region at which the data is available is highlighted in bold. UK is dealt with as four different countries: England, North Ireland, Scotland, Wales.

Table 2. Country-specific data sources

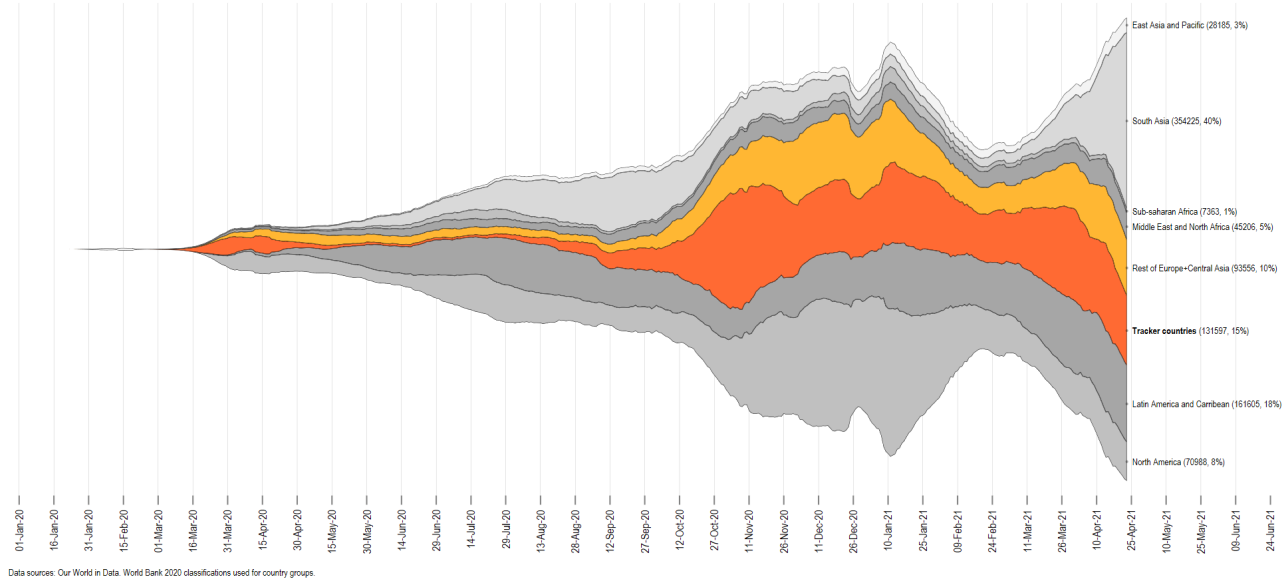
Country	Code	Agency responsible for the data	Official site	Data source
Austria	AT	Österreichische Agentur für Gesundheit und Ernährungssicherheit (AGES)	Link	Official website
Belgium	BE	Belgian Institute for Health (sciensano)	Link	Official website
Croatia	HR	Ministry of Health	Link	Official website
Czechia	CZ	Ministry of Health (MZCR)	Link	Official website
Denmark	DK	Statens Serum Institut (SSI)	Link	Official website
Estonia	EE	Estonian Health Board (Terviseamet)	Link	Official website
Finland	FI	Finnish Institute for Health and Welfare (THL)	Link	Official data via GitHub: HS-Datadesk
France	FR	Santé publique France	Link	Official website
Germany	DE	Robert Koch Institute (RKI)	Link	Official data via GitHub: jgebrcke
Greece	EL	National Public Health Organization (EODY)	Link	Scraped data via GitHub: Sandbird
Hungary	HU	The Government of Hungary	Link	Scraped data via GitHub: nickgon
Ireland	IE	The Department of Health	Link	Official data via ArcGIS Hub
Italy	IT	Ministero della Salute	Link	Official data via Github: pem-dpc
Latvia	LV	The Ministry of Health	Link	Official website
Netherlands	NL	National Institute for Public Health and the Environment (RIVM)	Link	Official data via ArcGIS Hub
Norway	NO	Norwegian Institute of Public Health (NIPH)	Link	Official data via GitHub: thohan88
Poland	PL	The Ministry of Health	Link	Official data via GitHub: covid19-eu-zh
Portugal	PT	The Directorate-General for Health (DSG)	Link	Official data via GitHub: bruno-leal
Romania	RO	The National Institute of Public Health (CNSCBT)	Link	Official website
Slovak Republic	SK	Ministry of Investments, Regional Development and Informatization	Link	Scraped data via GitHub: radoondas
Slovenia	SI	Republic of Slovenia website	Link	Official data via GitHub: sledilnik
Spain	ES	National Center for Epidemiology (isciii)	Link	Official website
Sweden	SE	The Public Health Agency of Sweden	Link	Official data via ArcGIS Hub
Switzerland	CH	Bundesamt für Gesundheit (BAG)	Link	Scraped data via GitHub: covid19-eu-zh
United Kingdom	UK	The UK Government	Link	
England		National Health Service (NHS)	Link	Data via GitHub: odileeds
Scotland		The Scottish Government	Link	NHS Scotland
North Ireland		Department of Health North Ireland	Link	
Wales		The Welsh Government	Link	

Note: Websites and URLs are subject to change, as links change or get updated, or better data sources are found. Please check the Tracker GitHub page for the latest information. The UK is treated as four separate countries.

Table 3. Countries with data or mapping issues

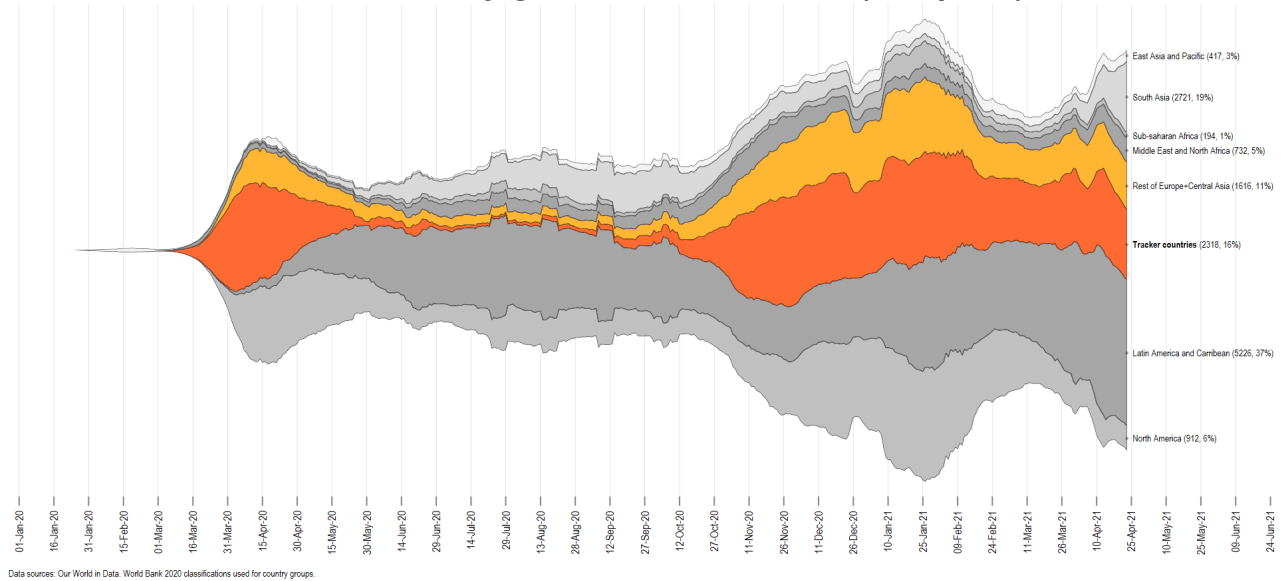
Country	Machine readable data?	NUTS 3 2016 mapping?	Additional comments
Belgium	Yes	Yes	Regions with cases less than five are given as <5. For the homogenized dataset this is replaced with 1 to make the variable numeric.
Estonia	Yes	Yes	Cases are only provided in ranges of 10. These middle point of each range is taken and multiplied by the number of cases. The sub-regions are then aggregated up to NUTS 3 boundaries.
Finland	No	No	The data is provided at the Hospital District level. These do not correspond perfectly to NUTS 3 regions. See Figure 5b for reference. The official website also shows more detailed municipality-level map but it is not clear how to access it. For hospital regions that do not perfectly overlap, the spatial merge is defined on the rule that 80% of a Hospital District needs to be contained within a NUTS 3 boundary. This is done using QGIS and the correspondence between the regions is manually done in the script since there are only 21 regions.
Greece	No	No	Data is available at the Prefecture level which corresponds perfectly to NUTS 2 2016 boundaries. See Figure 5d.
Italy	No	No	Data merges perfectly with NUTS 3 2021 boundaries. For 2016 boundaries, three regions on an island have their boundaries shifted. These have been skipped in the visualization. See Figure 5c.
Latvia	Yes	Yes	Regions with cases less than five are given as <5. For the homogenized dataset this is replaced with 1 to make the variable numeric.
Poland	No	No	The data correspondence perfectly to NUTS 2 2016 definitions for all regions except Warsaw (PL90). Warsaw is split into two regions PL91 and PL92 in the NUTS 2 2016 definitions so for visualization purposes PL91 and PL92 are combined to represent the city. The data file switches from cumulative to daily cases in the same column after 23 November 2020. This is manually fixed in the script. Data error exists for 13 June 2020 entries which is dropped in the final data. The official website now provides NUTS 3 level data but the range is limited.
Portugal	No	Yes	Portugal switched to releasing regional data at weekly intervals after 7 July 2020. From 26 October 2020 the reporting range was increased to 14-day intervals. Therefore most of daily cases data is limited to pre-July 2020 values. Only the daily cases reported in the weekly or bi-weekly data are added to the homogenized tracker. Please see the raw data and the Portugal GitHub page (https://github.com/dssg-pt/covid19pt-data) for details.
<i>United Kingdom</i>			UK now has an official API server for data queries but there are limits to how much data can be extracted. Currently the data aggregator website Our World in Data is the only source providing LAU level information for UK, but this is only available at a 7-day rolling average normalized by population (https://ourworldindata.org/local-covid-uk). Bulk micro regional data has not been publicly released. North Ireland and Wales skipped due to availability of regional data.
England	No	Yes	NUTS 3 correspondence is extracted using a spatial merge between the Local Authority Districts (LADs) using April 2019 definitions and NUTS 3 2016 boundaries which overlap perfectly. See Figure 5a for details.

COVID-19 daily global cases: 892,825 (23 Apr 21)



(a)

COVID-19 daily global deaths: 14,236 (23 Apr 21)



(b)

Figure 1. Global distribution of COVID-19 cases and deaths. Countries in the tracker are highlighted in dark orange, while the rest of Europe is shown in a light orange color.

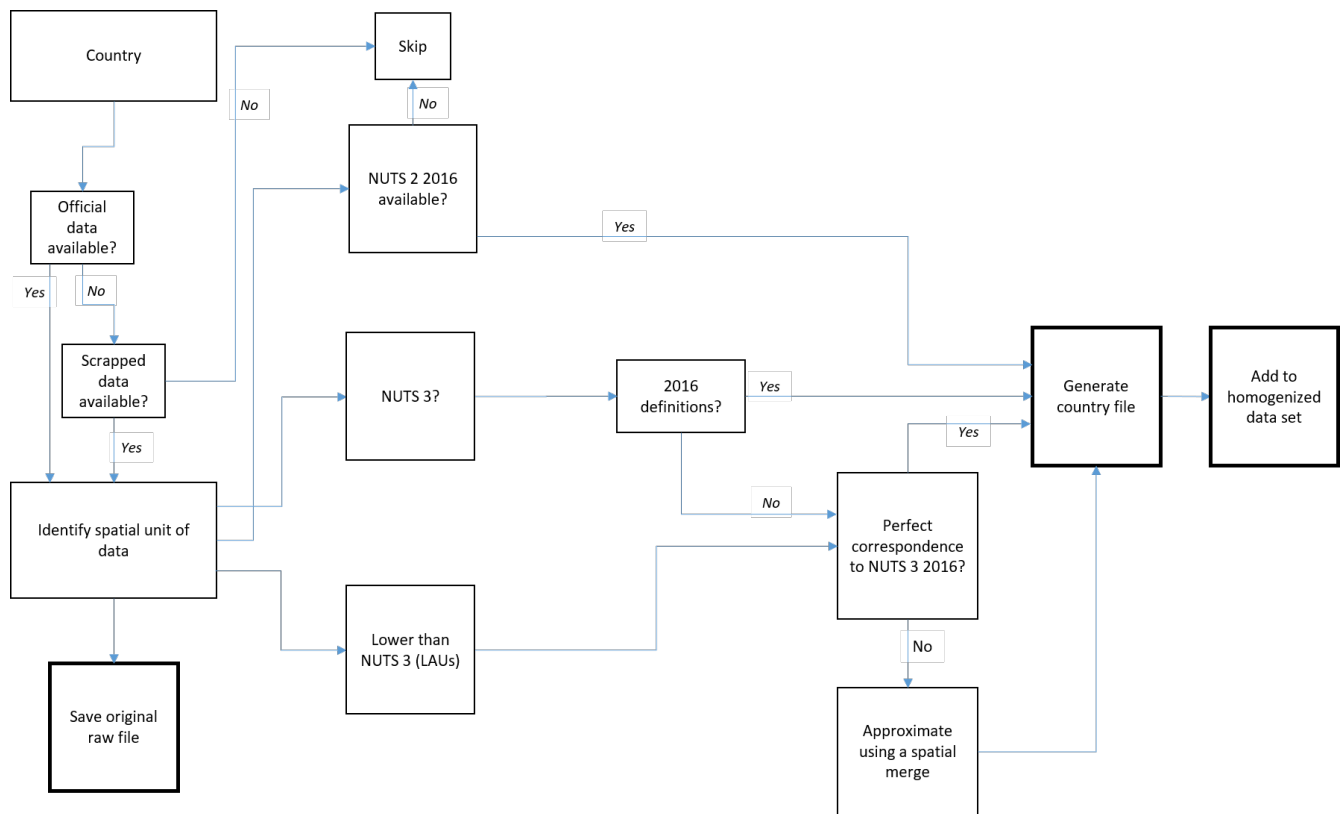


Figure 2. Workflow for the Tracker

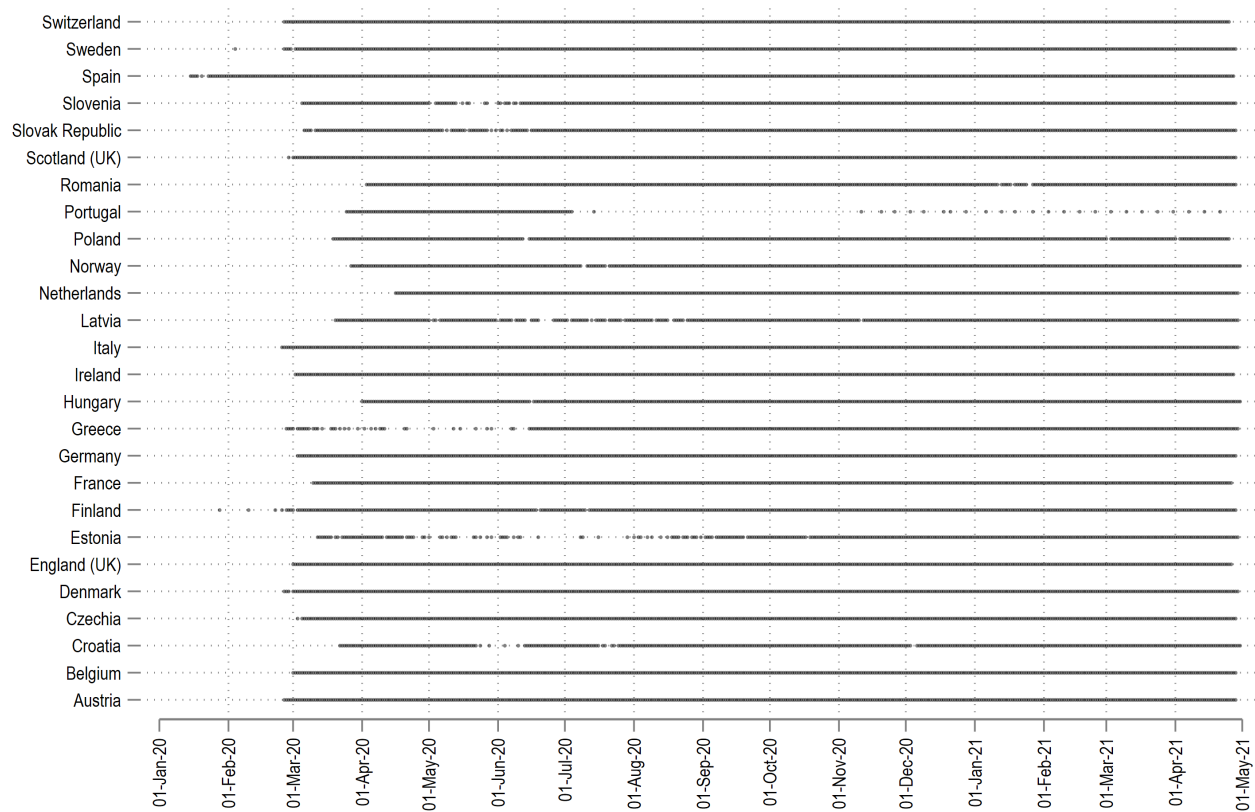


Figure 3. Data range of countries in the Tracker.

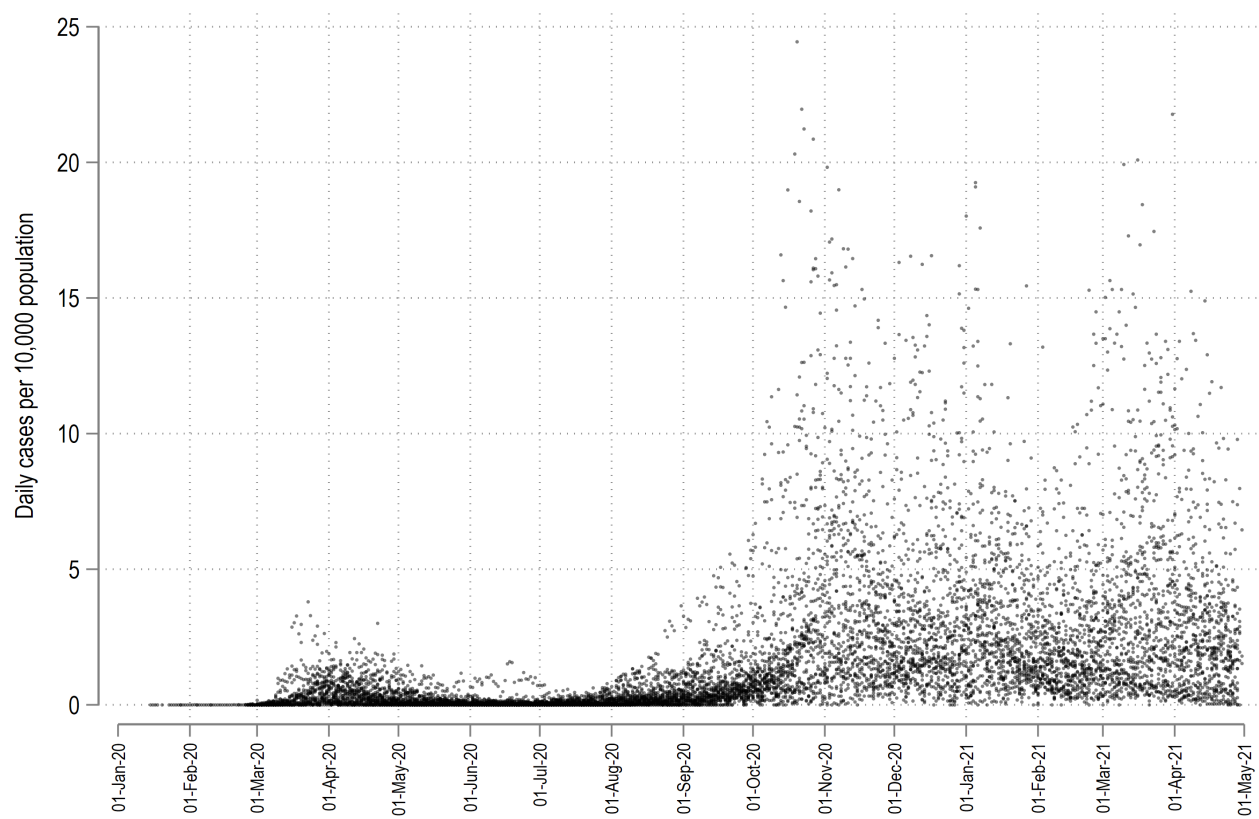


Figure 4. Distribution of daily cases per 10,000 population.

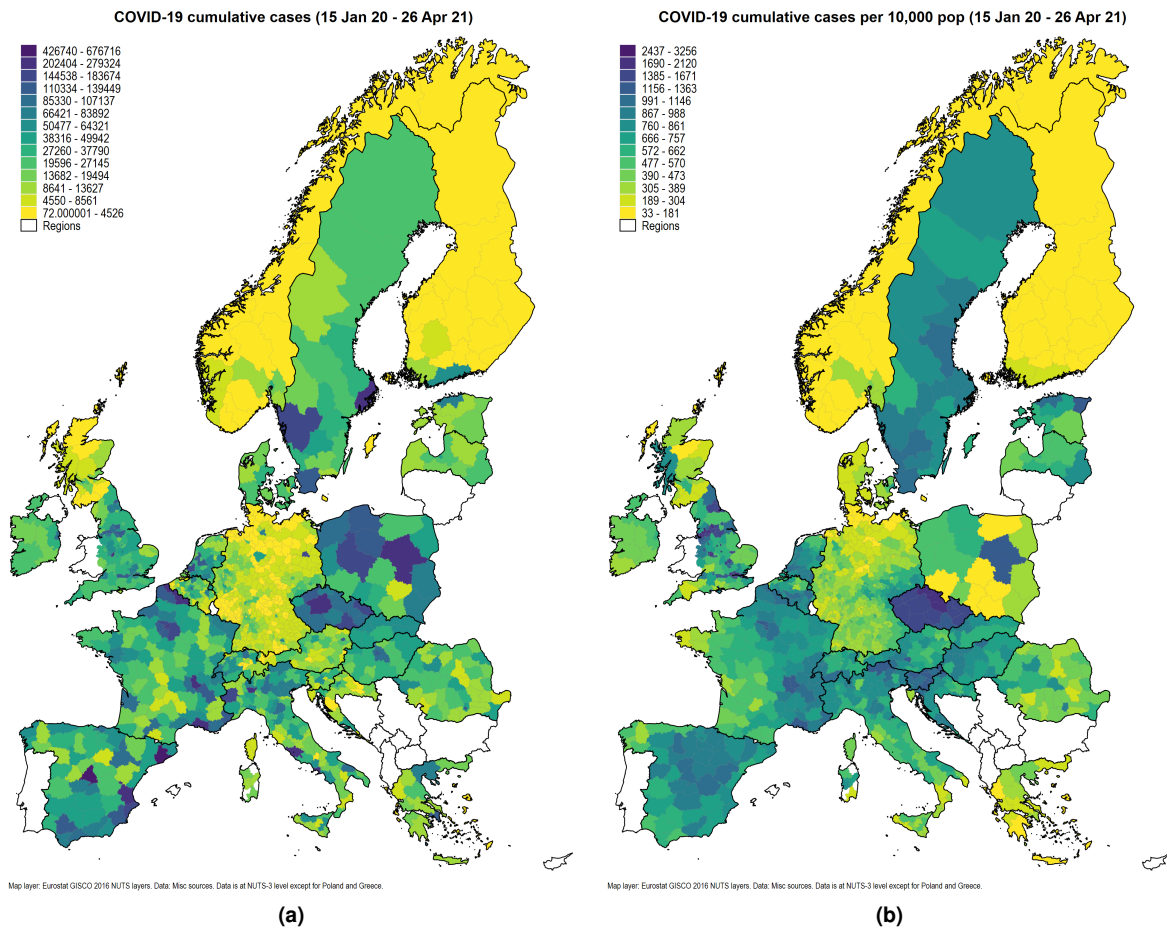


Figure 5. Spatial distribution of cumulative COVID-19 cases.

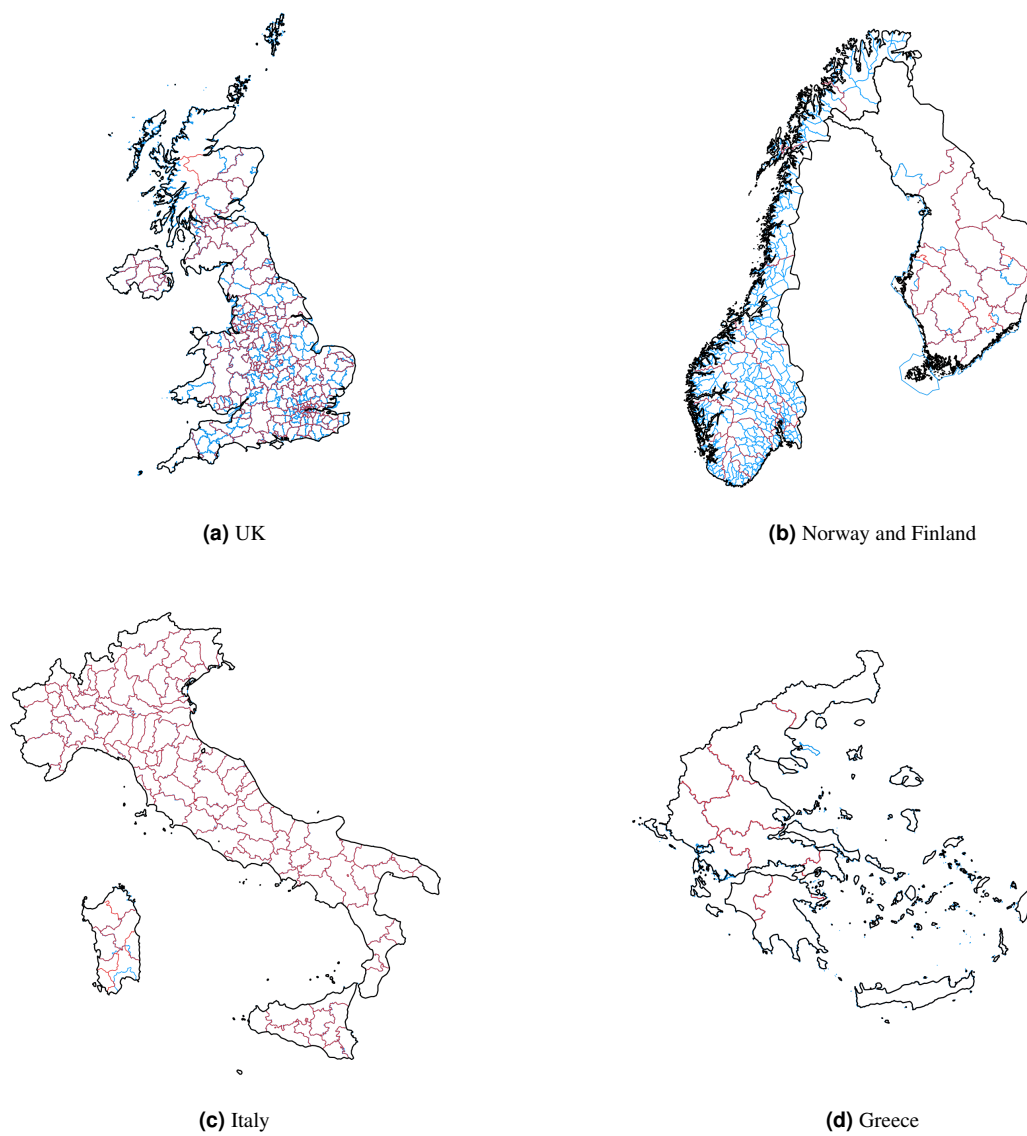
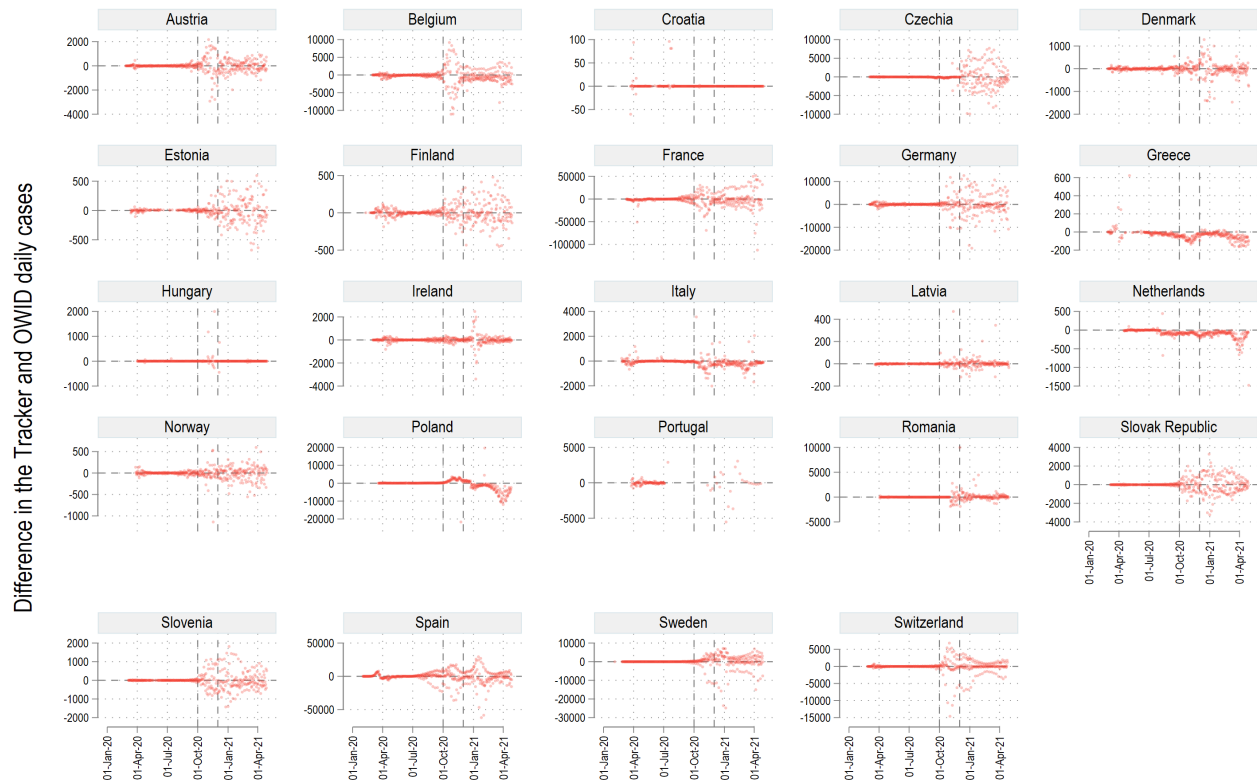


Figure 6. Countries where region-to-NUTS boundaries are approximated.



Data trends start deviating after 1st October 2020. OWID formally announces switch from ECDC to JHU dataset starting 1st Nov 2020 (<https://ourworldindata.org/covid-data-switch-jhu>).

Figure 7. Tracker comparison with Our World in Data (OWID) values.