

1 **Title**

2 Effects of visual attention modulation on dynamic effective connectivity and visual fixation during own-
3 face viewing in body dysmorphic disorder

4
5 **Running Title**

6 Dynamic effective connectivity in BDD

7
8 **Authors**

9 Wan-wa Wong¹, D. Rangaprakash², Joel P. Diaz-Fong¹, Natalie M. Rotstein¹, Gerhard S. Hellemann³,
10 Jamie D. Feusner¹

11
12 ¹Department of Psychiatry and Biobehavioral Sciences, David Geffen School of Medicine, University of
13 California Los Angeles, Los Angeles, CA, United States

14 ²Athinoula A. Martinos Center for Biomedical Imaging, Massachusetts General Hospital, Harvard
15 Medical School, Charlestown, MA, United States

16 ³Department of Biostatistics, School of Public Health, University of Alabama at Birmingham,
17 Birmingham, Alabama

18
19 Address correspondence to Wan-wa Wong, Department of Psychiatry and Biobehavioral Sciences, David
20 Geffen School of Medicine, University of California Los Angeles, Los Angeles, CA, USA. Email:
21 wwwong@mednet.ucla.edu

22
23 **Abstract**

24 **Background:** In individuals with body dysmorphic disorder (BDD), selective attention biases and aberrant
25 visual scanning patterns may cause imbalances in global vs. detailed visual processing, contributing to
26 perceptual distortions for appearance. The mechanistic effects of modifying visual attention on brain
27 function in BDD, which may be critical to developing perceptual-based treatments, have not been
28 explored. This study tested the effects of visual-attention modulation on dorsal and ventral visual stream
29 activation and connectivity, and eye behaviors.

30 **Methods:** We acquired functional magnetic resonance imaging data in 37 unmedicated adults with BDD
31 and 30 controls. Participants viewed their faces under two conditions: a) unconstrained (naturalistically),
32 and b) holding their gaze on the center of the image (visual-attention modulation), monitored with an eye-
33 tracking camera. We analyzed activation and dynamic effective connectivity in dorsal and ventral visual
34 streams and visual fixation duration.

35 **Results:** Visual-attention modulation resulted in longer fixation duration and reduced activation in dorsal
36 and ventral visual streams in both groups compared with naturalistic viewing. Longer fixation duration
37 was associated with greater effective connectivity from V1 to early dorsal visual stream during the second
38 naturalistic viewing, across groups. During naturalistic viewing, there was greater V1 to early dorsal
39 visual stream connectivity after, compared with before, visual-attention modulation.

40 **Conclusions:** When viewing one's face, longer visual fixation may confer greater communication in
41 dorsal visual system, facilitating global/holistic visual processing. The finding that reduction in visual
42 scanning while viewing one's face results in persistent effects during unconstrained viewing has
43 implications for perceptual retraining treatment design for BDD.

44
45 **Keywords**

46 Body dysmorphic disorder, Time-varying effective connectivity, Face processing, Visual attention
47 modulation, Dorsal and ventral visual streams

48

49 **1 Introduction**

50 Body dysmorphic disorder (BDD) is marked by preoccupations with misperceived appearance defects,
51 which sufferers believe render them ugly and deformed, and repetitive behaviors to check or fix one's
52 appearance. Commonly misperceived appearance features involve the face and head, although any body
53 part can be of concern (1). The consequences can be profound, with high lifetime prevalence of suicide
54 attempts (25%) (2) and hospitalization (50%) (3). 27 to 39 percent are delusional in their beliefs (4). BDD
55 is still under-recognized, misdiagnosed, and understudied, although BDD has a high prevalence of ~2% in
56 the general population (5). Some neurobiological models to explain vulnerability to BDD have been put
57 forth (e.g., (6,7)) but a comprehensive understanding of this condition is still emerging.

58 Disturbances of visual information processing in BDD are likely critical neurobiological
59 contributors to the core psychopathological feature of perceptual distortions of appearance (6,8). Our
60 previous neuroimaging studies provide support for this premise. Using own-face (9), other-face (10), and
61 house (11) stimuli as probes in functional magnetic resonance imaging (fMRI) studies, we found
62 abnormally reduced activity in the dorsal visual stream (DVS) when viewing filtered images that
63 contained only low spatial frequency information (i.e. conveying configural and holistic information).
64 This led to the hypothesis that the hyper-scrutiny of miniscule appearance details could be
65 mechanistically related to failing to “see” the appearance feature as an integrated whole, which may
66 reflect an imbalance in global and local processing. This hypothesis has gained support from subsequent
67 imaging and electro-cortical evidence (12,13). Adding to the hypothesized model, enhanced ventral visual
68 stream (VVS) processing of high-detail images, and perception of faces as more unattractive when the
69 magnitude of detailed processing increases, were found (12). Neuropsychological and psychophysical
70 studies testing face and body inversion effects have corroborated the model of imbalance in global vs.
71 local processing (14–19).

72 Further, selective attention biases potentially contribute to its psychopathological features (20).
73 This could include aberrant patterns of visual attention, with excessive visual attention paid to perceived
74 appearance defects, which is commonly observed phenomenologically (21). Studies using eye-tracking in

75 BDD have found biased attention to facial areas deemed flawed, and a scanning pattern characterized by
76 multiple fixations of brief duration (22,23).

77 In addition to psychophysical and visual task brain activation studies, functional connectivity
78 (FC) studies have also been conducted in BDD (24,25). During an others' face-viewing task, the BDD
79 group demonstrated aberrant connectivity for low spatial frequency images within a face-processing
80 network in the visual and temporal cortices, as well as between the fusiform face area and
81 precuneus/posterior cingulate and insula (24). During a body-viewing task, individuals with BDD
82 demonstrated reduced dorsal visual network connectivity (measured via independent component analysis)
83 compared with healthy controls (25). These studies, testing face-processing and body-processing
84 networks, resulted in findings consistent with a model of imbalances in global vs. local visual processing.

85 Given the phenomenology and the previous research in BDD, some current and proposed
86 treatment approaches (26–28) incorporate visual-attention modifications. Yet, the neural mechanisms
87 underlying aberrant visual attention and how the neurobiological substrates of potential targets are
88 engaged by different visual-attention modification approaches are incompletely understood. A
89 mechanistic understanding is critical for the development of, and ability to iteratively refine, effective
90 clinical treatments.

91 We therefore designed an experiment to test the neurobiological mechanistic effects of a strategy
92 of visual-attention modification (29). This strategy requires participants to visually fixate on a centered
93 cross overlaid on their face photo, with eye-tracking camera monitoring. The purpose is to reduce visual
94 scanning while viewing their face to enhance DVS activity, responsible for global/holistic visual
95 processing, and to suppress VVS activity, responsible for detailed/analytic visual processing.

96 To examine directional connectivity, we employed dynamic effective connectivity (DEC)
97 modeling (30) to assess connectivity changes from primary visual cortex (V1) to DVS and V1 to VVS
98 over time in different viewing conditions (i.e. unconstrained “natural” viewing of their faces, NatV, and
99 modulated viewing with fixation at a centered cross, ModV). In previous studies we found evidence of
100 hypoactivation in early visual cortical areas such as V1 and early V2 for viewing own faces (9); as well as

101 hypoactivation in later occipital (V2, V3) and parietal DVS regions, and hyperactivation in temporal
102 fusiform VVS regions for viewing others' faces (12). The primary goal was to investigate the effects of
103 visual-attention modulation on the DVS and VVS activation and connectivity during own-face viewing
104 within BDD and healthy controls. Secondly, we explored if the modulation had differential effects
105 between groups by comparing differences in brain activation, connectivity and visual fixation. We
106 hypothesized increase fixation duration during ModV compared to NatV across groups, and that fixation
107 duration would correlate with activation and connectivity in DVS. In addition, we hypothesized that
108 ModV would enhance DVS and suppress VVS activation across groups. We also hypothesized increased
109 connectivity from V1 to DVS and decreased connectivity from V1 to VVS during ModV compared to the
110 first NatV in BDD and controls. Further, we hypothesized that during NatV after ModV there would be
111 significant effects on DEC patterns within BDD and controls compared to the first NatV (i.e. a
112 "carryover" effect of the ModV). Finally, we hypothesized that in BDD compared to controls there would
113 be lower connectivity from V1 to DVS and higher connectivity from V1 to VVS during both ModV and
114 NatV.

115

116 **2 Materials and Methods**

117 **2.1 Participants**

118 The UCLA Institutional Review Board approved the study. All participants provided informed written
119 consent. Forty-three unmedicated adults with BDD and 35 healthy controls (CON) aged 18-40 years were
120 recruited from the community and were enrolled. BDD participants met DSM-5 criteria for BDD, with
121 face concerns. Those with concerns specifically about the region between their eyes were excluded due to
122 the nature of ModV task. BDD participants could have comorbid depressive or anxiety disorders, since
123 they commonly co-occur (See Supplementary Material S1 for exclusion criteria).

124 **2.2 Clinical assessments**

125 Eligibility was determined through telephone screening followed by a clinical interview with the study
126 physician (JDF). The Mini International Neuropsychiatric Interview (MINI) and BDD Module (31,32)

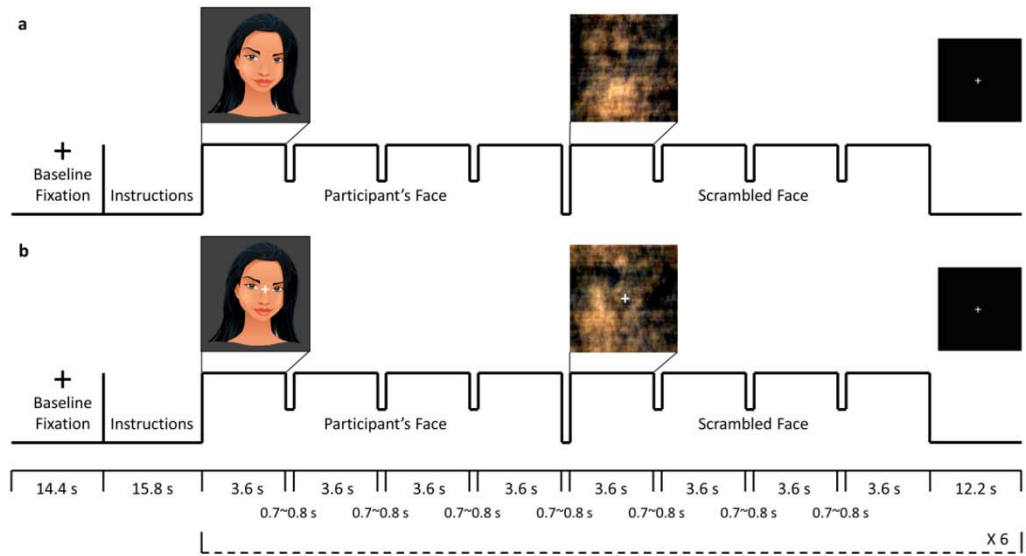
127 were administered. The Yale-Brown Obsessive-Compulsive Scale Modified for BDD (BDD-YBOCS)
128 (33), Montgomery-Åsberg Depression Rating Scale (MADRS) (34), Brown Assessment of Beliefs Scale
129 (BABS) (35), and the Hamilton Anxiety Scale (HAMA) (36) were administered (See Supplementary
130 Material S2 for assessment details).

131 **2.3 Task paradigm**

132 There were two sets of stimuli for the NatV condition: photos of participant's face and scrambled faces as
133 the control task (Figure 1a). There were also two sets of stimuli for ModV condition: the same photos
134 overlaid with a semi-transparent crosshair between the eyes, and the scrambled faces with a crosshair
135 (Figure 1b).

136 FMRI data were acquired while participants underwent two conditions. During NatV, participants
137 were instructed to view the (unaltered) photos of their face and scrambled images of their face as they
138 normally do. During ModV, they were instructed to view the same images while maintaining attention
139 and eye gaze on the crosshair.

140 Participants were randomly assigned to one of the two counterbalanced groups for three fMRI
141 runs: NatV-NatV-ModV (NNM) or NatV-ModV-NatV (NMN). They were instructed to press a button
142 every time an image disappeared from the screen to ensure vigilance. Moreover, high-resolution MR-
143 compatible display goggles (VisuaStimXGA, Resonance Technology, Inc.) with a right-side mounted
144 infrared camera was used to present stimuli and record eye gaze. ViewPoint EyeTracker software
145 (Arrington Research, Inc.) sampled pupil location at a rate of 30Hz. A 9-point calibration was used to
146 normalize the eye gaze position relative to the screen. All values were normalized with respect to mapped
147 x-axis and y-axis gaze values in a range of 0.0 to 1.0.



148

149

150

151

152

153

154

155

156

157

158

159

160

161

162

163

Figure 1 *fMRI task paradigm. Four color photos of participants' own faces at different, standardized angles were captured before the MRI session. A blocked design was used for the presentation of participant's own face and scrambled face control stimuli for both (a) natural viewing and (b) visual modulation runs. The first 4 images were participant's faces at different angles, and the next 4 images were scrambled faces. Each image was presented for 3.6 s, with a brief gap of 0.7~0.8 s for changing the image. A fixation with duration of 12.2 s was shown after the stimuli. The presentation of participant's face and scrambled face stimuli was repeated six times in a single run. The stimuli for the visual modulation run (b) had a semi-transparent crosshair between the eyes of the participants' faces and in the center of the scrambled faces. For the visual modulation run, participants were required to maintain their gaze on the crosshair. The rationale was that fixating visual gaze on the crosshair would reduce scanning associated with piecemeal/detailed processing and enhance holistic/global visual processing. To ensure task compliance for viewing the photos and crosshairs, gaze location was continuously monitored with the camera by the experimenters during the scan.*

164 **2.4 MRI data acquisition and preprocessing**

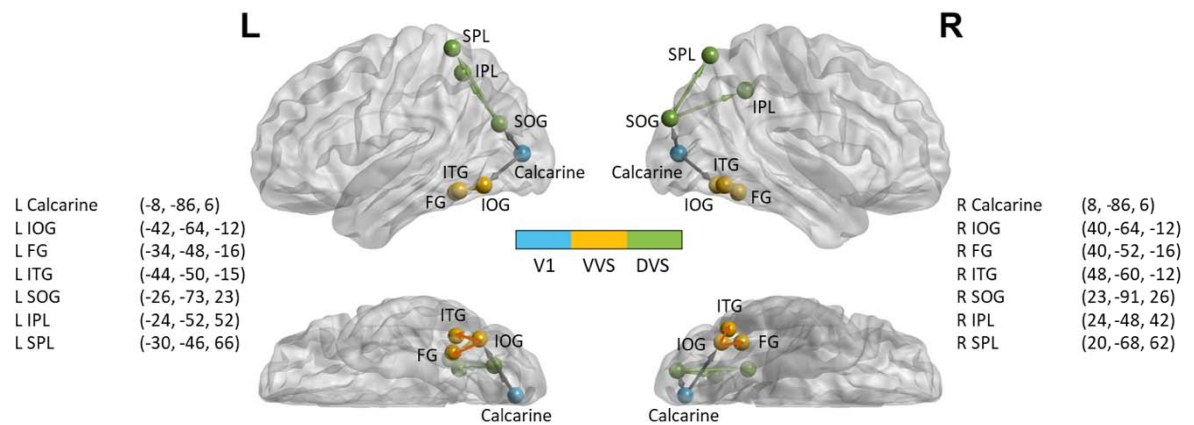
165 MRI data were acquired on a 3T Siemens Prisma scanner. Data preprocessing was done using fMRIPrep
166 1.4.0 (37). See Supplementary Material S3-S5 for details of data acquisition and preprocessing, including
167 quality control and motion correction.

168 **2.5 Brain activation analysis**

169 The preprocessed fMRI data were analyzed with a general linear model using FEAT in FSL 5.0.9 (38,39).
170 For lower-level analysis, two different levels of contrasts (1st level: unaltered face stimuli vs. fixation
171 (baseline); 2nd level: 1st NatV vs. 2nd NatV, 1st NatV vs. ModV) were used. For higher-level analysis,
172 group levels of contrasts (within-group level: BDD and CON; between-group level: BDD vs. CON) were
173 used. We used DVS and VVS masks to test hypotheses regarding activation in these systems. See
174 Supplementary Material S6 for more information.

175 **2.6 Brain connectivity analysis**

176 Fourteen regions-of-interest (ROIs) were derived from the Neurosynth (<https://neurosynth.org/>) functional
177 meta-analysis in DVS and VVS (Figure 2). Blind-deconvolution (40) was performed on the timeseries
178 extracted from these ROIs to minimize intra-subject variability in hemodynamic response function (HRF)
179 (41) and to improve estimation of effective connectivity (42). DEC, a time-varying measure of directional
180 connectivity between pairs of ROIs, was computed at each time point using time-varying Granger
181 causality (GC) (30). The deconvolved timeseries were fitted into a dynamic multivariate autoregressive
182 (dMVAR) model for estimating DEC between ROIs, which was solved in a Kalman-filter framework.
183 The dMVAR model coefficients vary as a function of time, whose lengths were identical to the number of
184 timepoints in the timeseries. See Supplementary Material S7 for more information. Twelve intra-
185 hemispheric connections were chosen and divided into 4 categories: 1) VVS_{Lower} (*Calcarine to IOG*), 2)
186 VVS_{Higher} (*IOG to FG; IOG to ITG*), 3) DVS_{Lower} (*Calcarine to SOG*), and 4) DVS_{Higher} (*SOG to IPL;*
187 *SOG to SPL*) (Figure 2). From these twelve connections, the timepoints associated with those trials of
188 viewing unaltered faces were extracted for subsequent statistical analysis.



189

190

191

192

193

194

195

196

197

198

199

200

201

202

2.7 Gaze analysis

203

204

205

206

207

Figure 2 Locations of the 14 spherical ROIs used for dynamic effective connectivity analysis, overlaid on a brain surface with lateral and ventral views. The ROIs in the visual areas were defined using Neurosynth (<https://neurosynth.org/>) with the search terms including “primary visual”, “ventral visual”, “visual stream”, and “dorsal visual” to obtain maps generated with association tests. Clusters in the visual areas included 2 ROIs in V1 [bilateral calcarine], 6 ROIs in VVS [bilateral inferior occipital gyrus (IOG), fusiform gyrus (FG), and inferior temporal gyrus (ITG)], and 6 ROIs in DVS [bilateral superior occipital gyrus (SOG), inferior parietal lobule (IPL), and superior parietal lobule (SPL)]. The nomenclature is based on Eickhoff-Zilles macro labels from N27, implemented in AFNI. All spheres had a radius of 5 mm and the center-of-mass coordinates obtained from the clusters are x, y and z in the MNI space. This figure was prepared using BrainNet Viewer (43).

Pupil data were filtered with default settings in the ViewPoint software. Blinks were removed using a blink detection algorithm for low-speed eye-tracking (44). Missing values of less than four consecutive data points (~133ms) were linearly interpolated, to correct for flicker and loss of contact, considering that saccades typically take 100-130ms to program (45,46). Gaze position values were then smoothed using a Savitzky-Golay filter (47), a simplified least square procedure which is suggested to perform well in low-

208 speed eye-tracking that contains saccade amplitude greater than 5° (48). Fixations were identified using a
209 velocity threshold algorithm (49) with a velocity threshold of 0.10°/s and a drift threshold of 0.30°/s.
210 Fixations of less than 100ms were excluded from the analysis. Mean fixation duration was the main
211 outcome variable to quantify fixation patterns when participants viewed their faces during the face
212 stimuli.

213 **2.8 Statistical analysis**

214 Linear mixed models (LMM) were used to study whether the DEC was significantly influenced by
215 experimental factors. Group (BDD or CON), order (NNM or NMN), run (1st or 2nd or 3rd run), level
216 (Lower or Higher), and their interactions were included in the model as fixed factors, with participant ID
217 as random factor. Pairwise comparisons with Bonferroni correction ($p < 0.05$) were performed afterwards
218 to determine which factors significantly differed from each other. The LMM analysis was done for the
219 separate DVS and VVS hypotheses. General linear model was used to analyze the mean fixation duration
220 from eye-tracking data (within-subjects factor: run; between-subjects factors: group and order). If a
221 significant three-way interaction effect was found, simple two-way interaction, simple-simple main effect,
222 and simple-simple pairwise comparisons were computed post-hoc. Pearson correlation was used as
223 exploratory follow-up analysis to determine associations between DEC, symptom severity measures of
224 BDD-YBOCS and BABS, and mean fixation duration. Statistical tests were done using SPSS and R.

225

226 **3 Results**

227 **3.1 Sample characteristics**

228 Forty-three BDD participants and 35 CON were eligible and scanned. Among these, we excluded one
229 BDD and one CON due to task noncompliance, four BDD and four CON due to excessive motion
230 artifacts, and one BDD due to fMRIPrep errors. Thirty-seven BDD and 30 CON were finally included in
231 the subsequent analyses (Table 1).

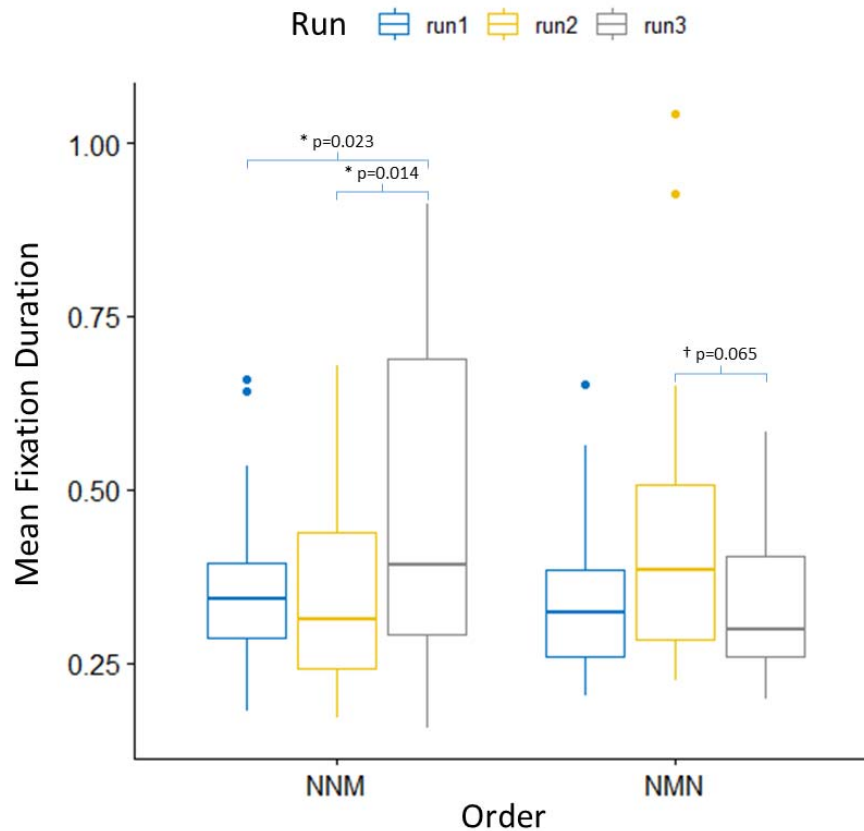
232 **Table 1** Sample characteristics

	BDD (n=37)	CON (n=30)	Between-group statistics		
			χ^2	t	p-value
Sex (Male/Female)	6/31	8/22	1.09		0.30
Age (Years)	24.8 ± 6.8	23.2 ± 6.8		1.00	0.32
Symptoms Severity					
HAMA	9.9 ± 7.2	2.5 ± 2.3		5.44	<0.001
MADRS	12.1 ± 9.1	1.1 ± 1.3		6.55	<0.001
BDD-YBOCS	26.8 ± 4.2	NA			
BABS	15.2 ± 4.5	NA			
Psychiatric Comorbidities					
Major depressive episode	6				
Persistent depressive disorder (dysthymia)	5				
Panic disorder with agoraphobia	2				
Agoraphobia without history of panic disorder	1				
Social phobia	5				
PTSD	2				
Generalized anxiety disorder	11				
No DSM comorbid disorder	18				

233 BDD = body dysmorphic disorder; CON = control; HAMA = Hamilton Anxiety Scale; MADRS =
 234 Montgomery-Asberg Depression Rating Scale; BDD-YBOCS = Yale-Brown Obsessive-Compulsive
 235 Scale Modified for BDD; BABS = Brown Assessment of Beliefs Scale; PTSD = Post-traumatic Stress
 236 Disorder; χ^2 = chi-square test; t = independent-samples t-test.

237 3.2 Gaze patterns

238 Nine participants were excluded for the eye-tracking analysis: three BDD due to device malfunction, two
239 BDD due to noncompliance, and two BDD and two CON due to poor data quality. A three-way mixed
240 ANOVA was performed to evaluate the effects of group, order and run on the mean fixation duration.
241 There was no significant three-way interaction between group, order and run, $F(1.74,83.62)=2.27$, $p=0.12$.
242 There was significant two-way interaction between order and run, $F(1.74,83.62)=16.03$, $p<0.001$.
243 Following this up by a simple main effect analysis with a Bonferroni adjustment (statistical significance
244 being accepted at $p<0.025$), there were significant simple main effects of run on the mean fixation
245 duration for the NMN order, $F(1.57,36.2)=7.74$, $p=0.003$, and for the NNM order, $F(1.44,38.9)=11.9$,
246 $p=0.0004$. Simple pairwise comparisons were computed between runs for the NMN and NNM orders,
247 with a Bonferroni adjustment. The mean fixation duration was significantly different between the 1st and
248 3rd runs (ModV > 1st NatV, $p=0.023$), and between the 2nd and 3rd runs (ModV > 2nd NatV, $p=0.014$) for
249 the NNM order. There was a trend between the 2nd and 3rd runs (ModV > 2nd NatV, $p=0.065$) for the
250 NMN order (Figure 3). In sum, across groups and for both NNM and NMN orders, as expected the mean
251 fixation duration lasted longer during ModV compared to NatV.



252

253 **Figure 3** Mean fixation duration across different orders and runs. Results are shown after
254 collapsing the group factor, as BDD and CON, had a common pattern of fixation duration across
255 the three runs for each order.

256

257 3.3 Brain activation patterns

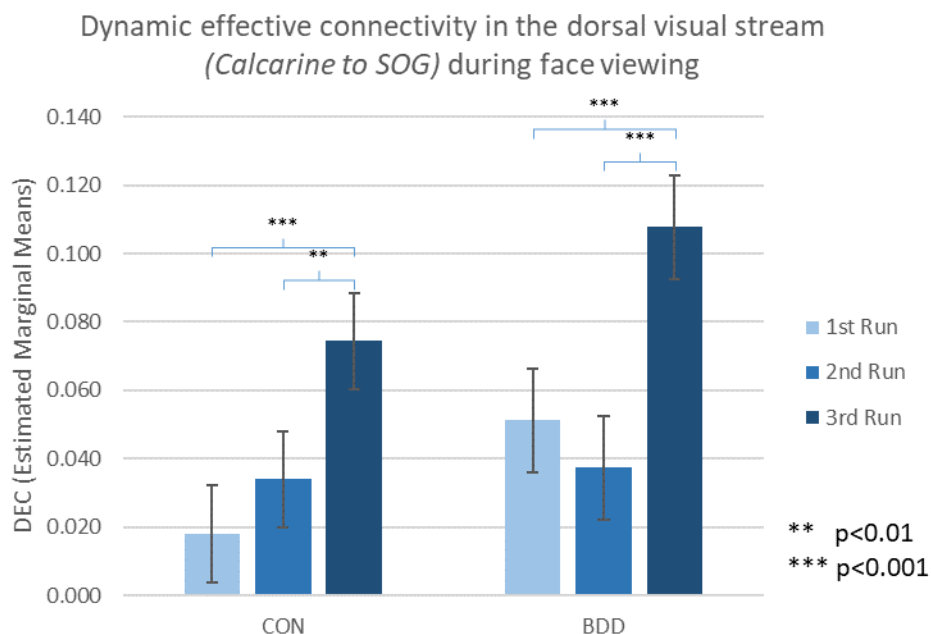
258 Activation in the DVS and VVS in response to unaltered face stimuli relative to baseline was greater
259 during 1st NatV compared with ModV for both BDD and CON (Figure S1). No significant difference was
260 found in the activation in response to unaltered face stimuli compared with baseline for the contrast of 1st
261 NatV vs. 2nd NatV, in BDD or CON. There was no significant difference for any contrasts between BDD
262 and CON. There were no significant associations between activation and mean fixation duration for any
263 condition, in BDD and CON.

264 3.4 Brain connectivity patterns

265 In the DVS, there were significant effects for ‘Level’ ($p < 0.001$), ‘Order x Run’ ($p < 0.001$), ‘Run x Level’
266 ($p < 0.001$), ‘Group x Order x Run’ ($p = 0.001$), ‘Group x Order x Level’ ($p < 0.001$), ‘Order x Run x Level’
267 ($p < 0.001$), and ‘Group x Order x Run x Level’ ($p = 0.018$). Pairwise comparisons were computed between
268 different runs, with a Bonferroni adjustment. For DVS_{Lower} , both BDD and CON with the NMN order
269 showed greater DEC during 2nd NatV compared to 1st NatV and ModV (Figure 4), while both BDD and
270 CON with the NNM order exhibited greater DEC during 1st NatV compared to 2nd NatV and ModV
271 (Figure S2a). For DVS_{Higher} , BDD with the NMN order showed greater DEC during ModV and 2nd NatV
272 compared to 1st NatV, while BDD with the NNM order only showed greater DEC during 2nd NatV
273 compared to 1st NatV. However, CON with the NNM order showed greater DEC during 2nd NatV and
274 ModV compared to 1st NatV, while CON with the NMN order only showed greater DEC during ModV
275 compared to 1st NatV (Figure S2a). All these differences were significant at $p < 0.05$, corrected.

276 In the VVS, there were significant effects for ‘Run’ ($p < 0.001$), ‘Level’ ($p < 0.001$), ‘Order x Run’
277 ($p < 0.001$), ‘Run x Level’ ($p < 0.001$), ‘Group x Order x Run’ ($p < 0.001$), ‘Group x Order x Level’
278 ($p = 0.050$), ‘Group x Run x Level’ ($p < 0.001$), ‘Order x Run x Level’ ($p = 0.017$), and ‘Group x Order x
279 Run x Level’ ($p < 0.001$). From pairwise comparisons between different runs ($p < 0.05$, Bonferroni
280 corrected), for both VVS_{Lower} and VVS_{Higher} , participants with the NNM order showed greater DEC during
281 1st NatV compared to 2nd NatV. There was no common pattern between BDD and CON with NMN order
282 (Figure S2b).

283



284

285 **Figure 4** Estimated marginal means of dynamic effective connectivity for the dorsal visual steam

286 (lower connections, bilateral VI to superior occipital gyrus - SOG) across CON and BDD groups

287 with the NMN order. The participants randomized to the NMN order received natural viewing

288 (N), modulated viewing (M), and then natural viewing (N) as the 1st, 2nd and 3rd runs. The p-

289 values were Bonferroni corrected.

290

291 3.5 Relationships between brain connectivity, visual fixation and clinical symptoms

292 For DVS_{Lower}, participants with the NNM order exhibited greater DEC during 1st NatV compared with the

293 2nd NatV and ModV, while participants with the NMN order showed greater DEC during the 2nd NatV

294 compared to the 1st NatV and ModV. Since a common pattern of DEC changes across the 3 runs was

295 discovered for DVS_{Lower} from the results of BDD and CON, the inter-relationships between DEC of

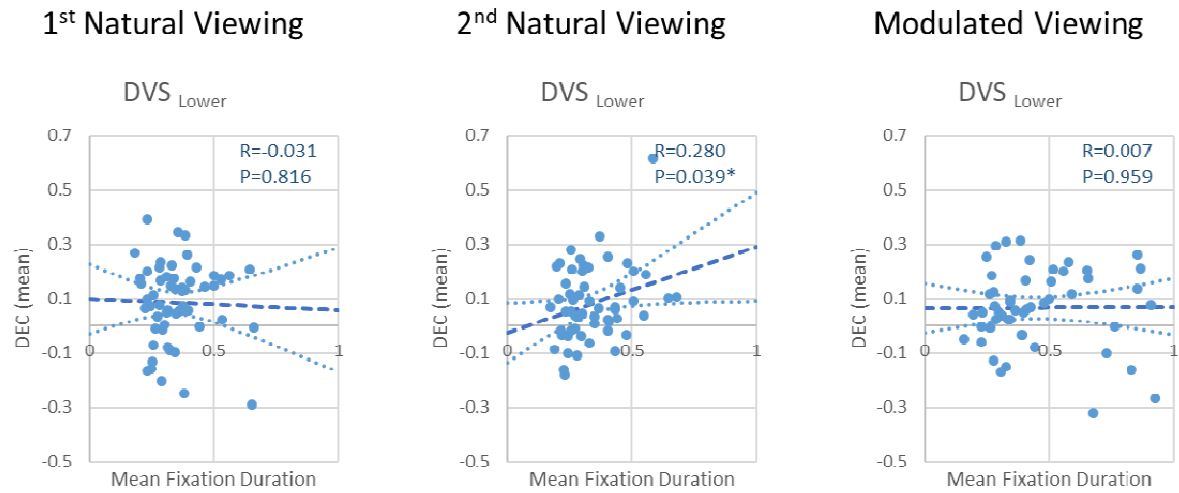
296 DVS_{Lower}, visual fixation duration and clinical symptoms (BDD-YBOCS and BABS) were further

297 explored with post hoc tests. Across groups, mean fixation duration positively correlated with DEC

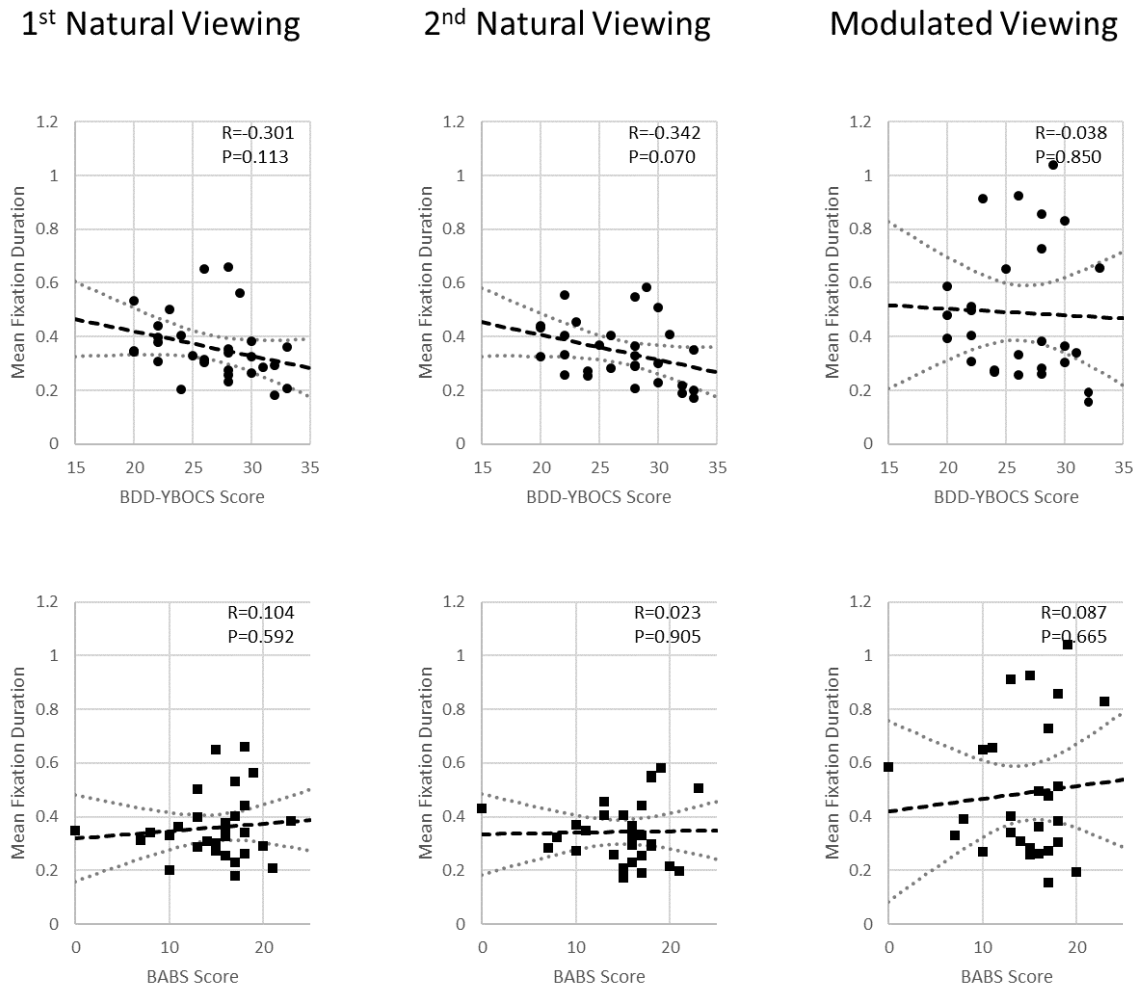
298 during the 2nd NatV for DVS_{Lower} (r=0.280, p=0.04) (Figure 5); those with shorter fixation duration had

299 weaker DEC for DVS_{Lower} during 2nd NatV. Negative trends were observed between BDD-YBOCS and

300 mean fixation duration during 1st and 2nd NatV in BDD (1st NatV: $r=-0.301$, $p=0.113$; 2nd NatV: $r=-0.342$,
301 $p=0.070$) (Figure 6); BDD individuals with more severe BDD symptom tended to have shorter fixation
302 duration during NatV.
303



304
305 **Figure 5** *Correlations between mean dynamic effective connectivity (DEC) and mean fixation*
306 *duration across all participants during 1st NatV, 2nd NatV, and ModV face viewing.*
307



308

309 **Figure 6** Correlations between mean fixation duration and BDD-YBOCS scores and BABS
310 scores across BDD participants during 1st NatV, 2nd NatV, and ModV.

311

312 4 Discussion

313 The goal of this study was to understand how brain activation, connectivity, and visual fixation patterns
314 when viewing one's face – the primary area of appearance concern for most with BDD – change under
315 conditions of modulated visual attention. We specifically investigated a) how brain activation,
316 connectivity, and visual fixation are influenced by visual-attention modulation, b) if there are subsequent
317 “carryover” effects when viewing one's face naturalistically after visual-attention modulation, and c)
318 whether these effects differ in individuals with BDD compared with CON. Visual-attention modulation

319 resulted in longer fixation duration and reduced activation in DVS and VVS in BDD and CON compared
320 with naturalistic viewing. Across groups, longer fixation duration was associated with greater dynamic
321 effective connectivity from V1 to early DVS during the second naturalistic viewing. There was stronger
322 connectivity from V1 to early DVS during the second naturalistic viewing following visual-attention
323 modulation, compared with the corresponding first naturalistic viewing. Those with more severe BDD
324 symptoms showed a trend for shorter fixation duration during naturalistic viewing. These findings shed
325 light on the inter-relationships between brain connectivity, eye behaviors and BDD symptoms.
326 Importantly, they demonstrate the mechanistic effects of a brief attention modulation intervention of
327 holding gaze constant on brain connectivity and visual fixation, which may have implications for novel
328 perceptual retraining treatment designs.

329 BDD and CON showed longer fixation duration during ModV compared with NatV. This was
330 expected due to the task nature that required them to fixate their gaze on a centered cross. It also
331 demonstrated overall compliance with the ModV instructions. No significant associations were found
332 between mean fixation duration and clinical scores during ModV. This suggests that, invariant to
333 symptom severity, BDD participants were able to visually fixate on the crosshair, which is an area of their
334 face for which they did not have significant appearance concerns (only one potential BDD participant was
335 deemed ineligible due to having a concern for the area corresponding to the fixation cross). Yet, there
336 were trends for negative associations between mean fixation duration and BDD-YBOCS scores during
337 both NatV conditions; those with more severe BDD symptoms had shorter fixation duration during NatV,
338 a trend that was stronger during the second NatV. Previous eye-tracking studies in BDD have shown
339 aberrant scan-paths when viewing stimuli such as faces. These scan-paths are generally characterized by
340 either a “focused” pattern – paying attention to areas of concern, or an “avoidant” pattern – avoiding
341 perceived defects (22,23,50,51). In these studies, BDD participants showed aberrant eye movements,
342 including enhanced selective visual attention to imagined defects, overfocus on negative attributes, or
343 atypical scanning behaviors with more blinks, fewer fixations, and less visual attention paid to prominent
344 facial features. Abnormalities in face-processing seem particularly evident in BDD when viewing own-

345 faces and faces showing negative or neutral emotional expressions (50,51). In a study examining attention
346 to attractive vs. unattractive parts of one's own and other's faces in participants with BDD, bulimia
347 nervosa (BN), and CON, BDD and BN participants spent less time looking at attractive parts of their *own*
348 face than CON, yet more time looking at attractive parts than unattractive parts of *other's* faces (52). This
349 suggests ignoring of positive aspects of one's face in BDD, and/or upward social comparison, either or
350 both of which could account for the increase in negative emotions observed in BDD after face viewing. In
351 the current study, shorter fixation duration during NatV, in those with more severe BDD symptoms,
352 suggests multiple short-duration fixation patterns interspersed with an increased number of saccades for
353 scanning multiple facial details. This could reflect heightened attention to multiple perceived appearance
354 flaws, or, alternatively, an unwillingness to fixate on any one area of their own faces more than briefly
355 due to a triggering of negative emotions.

356 Another important finding was a positive association between fixation duration and connectivity
357 from V1 to SOG during the second NatV, across participants. Thus, those with shorter fixation duration
358 had weaker connectivity during the second NatV. In general, eye-movement parameters, including
359 fixation duration and saccade amplitude, can be used to characterize distinct modes of visual processing
360 (53), which may indicate differential involvement of dorsal and ventral systems in saccade planning and
361 information processing. Although we did not directly quantify saccades (due to limitations of the data
362 from the google-mounted eye-tracker camera), fixation on a crosshair would be expected to be
363 accompanied by fewer saccades than naturalistic viewing.

364 Saccades have been found to suppress low spatial frequency (dorsal pathway) contrast sensitivity
365 (54), suggesting a reduction of global/configural processing. Moreover, the frontal eye fields for
366 controlling visual attention and eye movements have dense connections with the occipitoparietal network
367 (DVS) (55), such that reduction of eye scanning (also reduced occurrence of saccades) would enhance
368 DVS activity. Our findings corroborate this model, that longer fixation duration associates with stronger
369 effective connectivity in the early DVS. Thus, potential changes in attentional allocation in conjunction
370 with eye gaze behavior may have a modulatory effect on the early DVS, especially in later periods of face

371 viewing that were evident during the second NatV. Alternatively, previous studies of eye behaviors
372 describe a “pre-attentive” mode, in which scanning eye movements are predominant with brief fixations
373 and large saccades, while in an “attentive” mode, long fixations and small saccades are present, leading to
374 detailed inspection (53,56,57). In theory, pre-attentive scanning behavior could reflect dorsal pathway
375 processing, while attentive inspection behavior could reflect ventral pathway processing (53,58).
376 However, it is important to note that the studies characterizing these viewing modes were based on scene
377 viewing and may not apply to face processing, for which humans have high expertise and specialized
378 visual “templates,” and did not specifically examine dynamic connectivity patterns as in the current study.

379 Contrary to our hypothesis, there were no significant group differences in connectivity from V1
380 to DVS or V1 to VVS during the ModV or NatV conditions. Although, during the first NatV, the
381 magnitude of connectivity was slightly lower in early DVS, and slightly higher in early and later VVS
382 connectivity in BDD than CON (Figure S3). As the experiment was designed to test within-subject effects
383 of ModV as the primary goal, it is possible that the study was underpowered to detect group differences in
384 DEC owing to the number of main effects and interactions.

385 There are several important implications of these findings that could impact future translational
386 research. These results provide early evidence that changing eye-gaze behaviors might change the balance
387 of global vs. local processing mediated by the DVS. This has been suggested in other ongoing (59) or
388 planned (60) treatment protocols. The observation of increased DVS connectivity during the NatV
389 following the brief period of ModV (fixating on a non-concerning region of the face) suggests the
390 possibility of a persistent DVS effect that may enhance global/holistic processing. A similar phenomenon
391 was demonstrated in a study in which exposure to a Navon visual stimulus (61) – a large letter made of
392 smaller letters that was presented in a way to promote a global bias – induced global processing and
393 temporarily reversed visual processing biases in individuals with great body image concerns (62).

394 In this study, although there was no significant increase in visual fixation duration from ModV to
395 the following NatV, the DVS connectivity magnitude nevertheless scaled with the fixation duration
396 during this period. Thus, individuals with longer fixation duration, which may have persisted from the

397 preceding attention modulation, could have experienced enhanced DVS connectivity. In this second
398 NatV, there were no explicit instructions other than to view one's face naturalistically, so changes in gaze
399 patterns were likely implicit, although some participants might have willfully tried to reduce scanning
400 during this period.

401 There are several limitations to consider. The study population underrepresents the proportion of
402 males with BDD in the general population (63,64), thus findings may not generalize. Another limitation is
403 that we did not assess participants' emotional states during face viewing (in the interest of not interrupting
404 natural processes involved in face viewing that might be disrupted by self-reflection). Thus, we could not
405 investigate how degree of emotional arousal, such as anxiety (65), affects visual system activity.
406 Moreover, we were unable to use areas-of-interest on the face photographs due to limitations in positional
407 stability of the goggle-mounted eye-tracking camera that otherwise might be informative about viewing
408 patterns of areas of concern during NatV after ModV.

409 In conclusion, these findings provide evidence of enhanced dynamic connectivity from V1 to
410 early DVS when viewing faces naturalistically after visual-attention modulation. This suggests that
411 visual-attention modulation may have a subsequent carryover effect on the connectivity patterns during
412 natural viewing of one's face afterwards, which could enhance global/configural visual processing. The
413 clinical relevance is underscored by the observation that those with more severe BDD symptoms had
414 shorter fixation duration, and that longer visual fixation duration associated with greater DVS
415 connectivity. Visual-attention modulation thus holds promise for future studies of perceptual retraining
416 for BDD.

417

418

419 **Acknowledgments**

420 The authors declare no conflicts of interest.

421 This study was supported by the National Institute of Mental Health (R21MH110865 to JDF,
422 R01MH121520 to JDF), and the Nathan Cumming Foundation (JDF).

423

424 **Author Contributions**

425 WW, RD, JD, and NR were responsible for data analysis and paper writing. GH was responsible for
426 statistical modeling. JDF was responsible for clinical assessment, experimental design, and paper writing.

427 All authors read and approved the submitted manuscript.

428

429 **References**

430 1. Phillips KA (2005): *The Broken Mirror*. New York, NY: Oxford University Press.

431 2. Phillips KA, Menard W (2006): Suicidality in body dysmorphic disorder: a prospective study. *Am J*
432 *Psychiatry* 163: 1280–1282.

433 3. Phillips KA, McElroy SL, Keck PE Jr, Hudson JI, Pope HG Jr (1994): A comparison of delusional and
434 nondelusional body dysmorphic disorder in 100 cases. *Psychopharmacol Bull* 30: 179–186.

435 4. Phillips KA (2004): Psychosis in body dysmorphic disorder. *J Psychiatr Res* 38: 63–72.

436 5. Veale D, Gledhill LJ, Christodoulou P, Hodsoll J (2016): Body dysmorphic disorder in different
437 settings: A systematic review and estimated weighted prevalence. *Body Image* 18: 168–186.

438 6. Li W, Arienzo D, Feusner JD (2013): Body Dysmorphic Disorder: Neurobiological Features and an
439 Updated Model. *Zeitschrift Für Klinische Psychologie Und Psychotherapie*, vol. 42. pp 184–191.

440 7. Grace SA, Labuschagne I, Kaplan RA, Rossell SL (2017): The neurobiology of body dysmorphic
441 disorder: A systematic review and theoretical model. *Neuroscience & Biobehavioral Reviews*,
442 vol. 83. pp 83–96.

443 8. Beilharz F, Castle DJ, Grace S, Rossell SL (2017): A systematic review of visual processing and
444 associated treatments in body dysmorphic disorder. *Acta Psychiatr Scand* 136: 16–36.

- 445 9. Feusner JD, Moody T, Hembacher E, Townsend J, McKinley M, Moller H, Bookheimer S (2010):
446 Abnormalities of visual processing and frontostriatal systems in body dysmorphic disorder. *Arch*
447 *Gen Psychiatry* 67: 197–205.
- 448 10. Feusner JD, Townsend J, Bystritsky A, Bookheimer S (2007): Visual information processing of faces
449 in body dysmorphic disorder. *Arch Gen Psychiatry* 64: 1417–1425.
- 450 11. Feusner JD, Hembacher E, Moller H, Moody TD (2011): Abnormalities of object visual processing in
451 body dysmorphic disorder. *Psychol Med* 41: 2385–2397.
- 452 12. Li W, Lai TM, Bohon C, Loo SK, McCurdy D, Strober M, *et al.* (2015): Anorexia nervosa and body
453 dysmorphic disorder are associated with abnormalities in processing visual information. *Psychol*
454 *Med* 45: 2111–2122.
- 455 13. Li W, Lai TM, Loo SK, Strober M, Mohammad-Rezazadeh I, Khalsa S, Feusner J (2015): Aberrant
456 early visual neural activity and brain-behavior relationships in anorexia nervosa and body
457 dysmorphic disorder. *Front Hum Neurosci* 9: 301.
- 458 14. Deckersbach T, Savage CR, Phillips KA, Wilhelm S, Buhlmann U, Rauch SL, *et al.* (2000):
459 Characteristics of memory dysfunction in body dysmorphic disorder. *J Int Neuropsychol Soc* 6:
460 673–681.
- 461 15. Feusner JD, Moller H, Altstein L, Sugar C, Bookheimer S, Yoon J, Hembacher E (2010): Inverted
462 face processing in body dysmorphic disorder. *J Psychiatr Res* 44: 1088–1094.
- 463 16. Jefferies K, Laws KR, Fineberg NA (2012): Superior face recognition in Body Dysmorphic Disorder.
464 *J Obsessive Compuls Relat Disord* 1: 175–179.
- 465 17. Stangier U, Adam-Schwebe S, Müller T, Wolter M (2008): Discrimination of facial appearance
466 stimuli in body dysmorphic disorder. *J Abnorm Psychol* 117: 435–443.
- 467 18. Mundy E M, Sadusky A (2014): Abnormalities in visual processing amongst students with body
468 image concerns. *Adv Cogn Psychol* 10: 39–48.
- 469 19. Dhir S, Ryan HS, McKay EL, Mundy ME (2018): Parameters of visual processing abnormalities in
470 adults with body image concerns. *PLoS One* 13: e0207585.

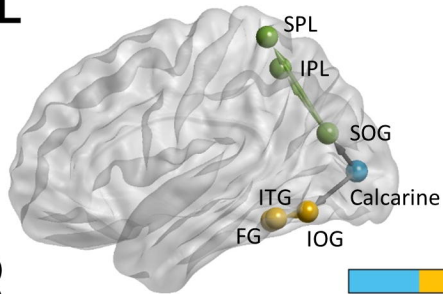
- 471 20. Johnson S, Williamson P, Wade TD (2018): A systematic review and meta-analysis of cognitive
472 processing deficits associated with body dysmorphic disorder. *Behav Res Ther* 107: 83–94.
- 473 21. Phillips KA (2009): *Understanding Body Dysmorphic Disorder*. New York, NY: Oxford University
474 Press.
- 475 22. Greenberg JL, Reuman L, Hartmann AS, Kasarskis I, Wilhelm S (2014): Visual hot spots: an eye
476 tracking study of attention bias in body dysmorphic disorder. *J Psychiatr Res* 57: 125–132.
- 477 23. Grocholewski A, Kliem S, Heinrichs N (2012): Selective attention to imagined facial ugliness is
478 specific to body dysmorphic disorder. *Body Image* 9: 261–269.
- 479 24. Moody TD, Sasaki MA, Bohon C, Strober MA, Bookheimer SY, Sheen CL, Feusner JD (2015):
480 Functional connectivity for face processing in individuals with body dysmorphic disorder and
481 anorexia nervosa. *Psychol Med* 45: 3491–3503.
- 482 25. Moody TD, Morfini F, Cheng G, Sheen CL, Kerr WT, Strober M, Feusner JD (2020): Brain
483 activation and connectivity in anorexia nervosa and body dysmorphic disorder when viewing
484 bodies: relationships to clinical symptoms and perception of appearance. *Brain Imaging Behav*.
485 <https://doi.org/10.1007/s11682-020-00323-5>
- 486 26. Wilhelm S, Phillips KA, Greenberg JL, O’Keefe SM, Hoepfner SS, Keshaviah A, *et al.* (2019):
487 Efficacy and posttreatment effects of therapist-delivered cognitive behavioral therapy vs
488 supportive psychotherapy for adults with body dysmorphic disorder: A randomized clinical trial.
489 *JAMA Psychiatry* 76: 363–373.
- 490 27. Johnson S, Egan SJ, Andersson G, Carlbring P, Shafran R, Wade TD (2019): Internet-delivered
491 cognitive behavioural therapy for perfectionism: Targeting dysmorphic concern. *Body Image* 30:
492 44–55.
- 493 28. Beilharz F, Rossell SL (2017): Treatment Modifications and Suggestions to Address Visual
494 Abnormalities in Body Dysmorphic Disorder. *J Cogn Psychother* 31: 272–284.
- 495 29. Feusner J, Deshpande R, Strober M (2017): A translational neuroscience approach to body image
496 disturbance and its remediation in anorexia nervosa. *Int J Eat Disord* 50: 1014–1017.

- 497 30. Büchel C, Friston KJ (1998): Dynamic changes in effective connectivity characterized by variable
498 parameter regression and Kalman filtering. *Hum Brain Mapp* 6: 403–408.
- 499 31. Eisen JL, Phillips KA, Coles ME, Rasmussen SA (2004): Insight in obsessive compulsive disorder
500 and body dysmorphic disorder. *Compr Psychiatry* 45: 10–15.
- 501 32. Rief W, Buhlmann U, Wilhelm S, Borkenhagen A, Brähler E (2006): The prevalence of body
502 dysmorphic disorder: a population-based survey. *Psychol Med* 36: 877–885.
- 503 33. Phillips KA, Hollander E, Rasmussen SA, Aronowitz BR, DeCaria C, Goodman WK (1997): A
504 severity rating scale for body dysmorphic disorder: development, reliability, and validity of a
505 modified version of the Yale-Brown Obsessive Compulsive Scale. *Psychopharmacol Bull* 33: 17–
506 22.
- 507 34. Montgomery SA, Asberg M (1979): A new depression scale designed to be sensitive to change. *Br J*
508 *Psychiatry* 134: 382–389.
- 509 35. Eisen JL, Phillips KA, Baer L, Beer DA, Atala KD, Rasmussen SA (1998): The Brown Assessment of
510 Beliefs Scale: reliability and validity. *Am J Psychiatry* 155: 102–108.
- 511 36. Hamilton M (1959): The assessment of anxiety states by rating. *Br J Med Psychol* 32: 50–55.
- 512 37. Esteban O, Markiewicz CJ, Blair RW, Moodie CA, Isik AI, Erramuzpe A, *et al.* (2019): fMRIPrep: a
513 robust preprocessing pipeline for functional MRI. *Nat Methods* 16: 111–116.
- 514 38. Woolrich MW, Ripley BD, Brady M, Smith SM (2001): Temporal autocorrelation in univariate linear
515 modeling of FMRI data. *Neuroimage* 14: 1370–1386.
- 516 39. Woolrich MW, Behrens TEJ, Beckmann CF, Jenkinson M, Smith SM (2004): Multilevel linear
517 modelling for FMRI group analysis using Bayesian inference. *Neuroimage* 21: 1732–1747.
- 518 40. Wu G-R, Liao W, Stramaglia S, Ding J-R, Chen H, Marinazzo D (2013): A blind deconvolution
519 approach to recover effective connectivity brain networks from resting state fMRI data. *Med*
520 *Image Anal* 17: 365–374.
- 521 41. Handwerker DA, Ollinger JM, D’Esposito M (2004): Variation of BOLD hemodynamic responses
522 across subjects and brain regions and their effects on statistical analyses. *Neuroimage* 21: 1639–

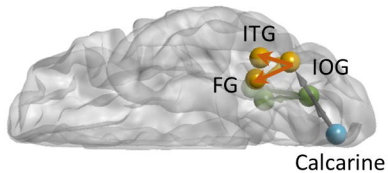
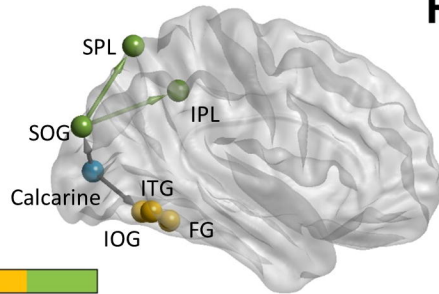
- 523 1651.
- 524 42. David O, Guillemain I, Sallet S, Reyt S, Deransart C, Segebarth C, Depaulis A (2008): Identifying
525 neural drivers with functional MRI: an electrophysiological validation. *PLoS Biol* 6: 2683–2697.
- 526 43. Xia M, Wang J, He Y (2013): BrainNet Viewer: a network visualization tool for human brain
527 connectomics. *PLoS One* 8: e68910.
- 528 44. Pedrotti M, Lei S, Dzaack J, Rötting M (2011): A data-driven algorithm for offline pupil signal
529 preprocessing and eyeblink detection in low-speed eye-tracking protocols. *Behav Res Methods*
530 43: 372–383.
- 531 45. Inhoff AW, Radach R (1998): Definition and computation of oculomotor measures in the study of
532 cognitive processes. *Eye Guidance in Reading and Scene Perception*. Elsevier, pp 29–53.
- 533 46. Radach R, Heller D, Inhoff A (1999): Occurrence and function of very short fixation durations in
534 reading. *Current Oculomotor Research*. Boston, MA: Springer US, pp 321–331.
- 535 47. Savitzky A, Golay MJE (1964): Smoothing and differentiation of data by simplified least squares
536 procedures. *Anal Chem* 36: 1627–1639.
- 537 48. Mack DJ, Belfanti S, Schwarz U (2017): The effect of sampling rate and lowpass filters on saccades -
538 A modeling approach. *Behav Res Methods* 49: 2146–2162.
- 539 49. Salvucci DD, Goldberg JH (2000): Identifying fixations and saccades in eye-tracking protocols.
540 *Proceedings of the Symposium on Eye Tracking Research & Applications - ETRA '00*. presented
541 at the the symposium, New York, New York, USA: ACM Press.
542 <https://doi.org/10.1145/355017.355028>
- 543 50. Toh WL, Castle DJ, Rossell SL (2015): Facial affect recognition in body dysmorphic disorder versus
544 obsessive-compulsive disorder: An eye-tracking study. *J Anxiety Disord* 35: 49–59.
- 545 51. Toh WL, Castle DJ, Rossell SL (2017): How individuals with body dysmorphic disorder (BDD)
546 process their own face: a quantitative and qualitative investigation based on an eye-tracking
547 paradigm. *Cogn Neuropsychiatry* 22: 213–232.
- 548 52. Kollei I, Horndasch S, Erim Y, Martin A (2017): Visual selective attention in body dysmorphic

- 549 disorder, bulimia nervosa and healthy controls. *J Psychosom Res* 92: 26–33.
- 550 53. Unema PJA, Pannasch S, Joos M, Velichkovsky BM (2005): Time course of information processing
551 during scene perception: The relationship between saccade amplitude and fixation duration. *Vis*
552 *cogn* 12: 473–494.
- 553 54. Burr DC, Morrone MC, Ross J (1994): Selective suppression of the magnocellular visual pathway
554 during saccadic eye movements. *Nature* 371: 511–513.
- 555 55. Schall JD, Morel A, King DJ, Bullier J (1995): Topography of visual cortex connections with frontal
556 eye field in macaque: convergence and segregation of processing streams. *J Neurosci* 15: 4464–
557 4487.
- 558 56. Antes JR (1974): The time course of picture viewing. *J Exp Psychol* 103: 62–70.
- 559 57. Over EAB, Hooge ITC, Vlaskamp BNS, Erkelens CJ (2007): Coarse-to-fine eye movement strategy
560 in visual search. *Vision Res* 47: 2272–2280.
- 561 58. Velichkovsky BM (2002): Heterarchy of cognition: the depths and the highs of a framework for
562 memory research. *Memory* 10: 405–419.
- 563 59. Wilhelm S, Phillips KA, Didie E, Buhlmann U, Greenberg JL, Fama JM, *et al.* (2014): Modular
564 cognitive-behavioral therapy for body dysmorphic disorder: a randomized controlled trial. *Behav*
565 *Ther* 45: 314–327.
- 566 60. Beilharz F, Castle DJ, Phillipou A, Rossell SL (2018): Visual training program for body dysmorphic
567 disorder: protocol for a novel intervention pilot and feasibility trial. *Pilot Feasibility Stud* 4: 189.
- 568 61. Navon D (1977): Forest before trees: The precedence of global features in visual perception. *Cogn*
569 *Psychol* 9: 353–383.
- 570 62. Beilharz FL, Atkins KJ, Duncum AJF, Mundy ME (2016): Altering visual perception abnormalities:
571 A marker for body image concern. *PLoS One* 11: e0151933.
- 572 63. Taqui AM, Shaikh M, Gowani SA, Shahid F, Khan A, Tayyeb SM, *et al.* (2008): Body Dysmorphic
573 Disorder: gender differences and prevalence in a Pakistani medical student population. *BMC*
574 *Psychiatry* 8: 20.

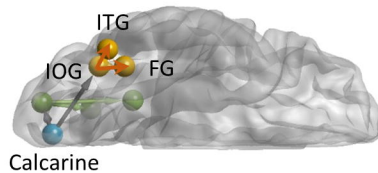
- 575 64. Koran LM, Abujaoude E, Large MD, Serpe RT (2008): The prevalence of body dysmorphic disorder
576 in the United States adult population. *CNS Spectr* 13: 316–322.
- 577 65. Bohon C, Hembacher E, Moller H, Moody TD, Feusner JD (2012): Nonlinear relationships between
578 anxiety and visual processing of own and others' faces in body dysmorphic disorder. *Psychiatry*
579 *Res* 204: 132–139.

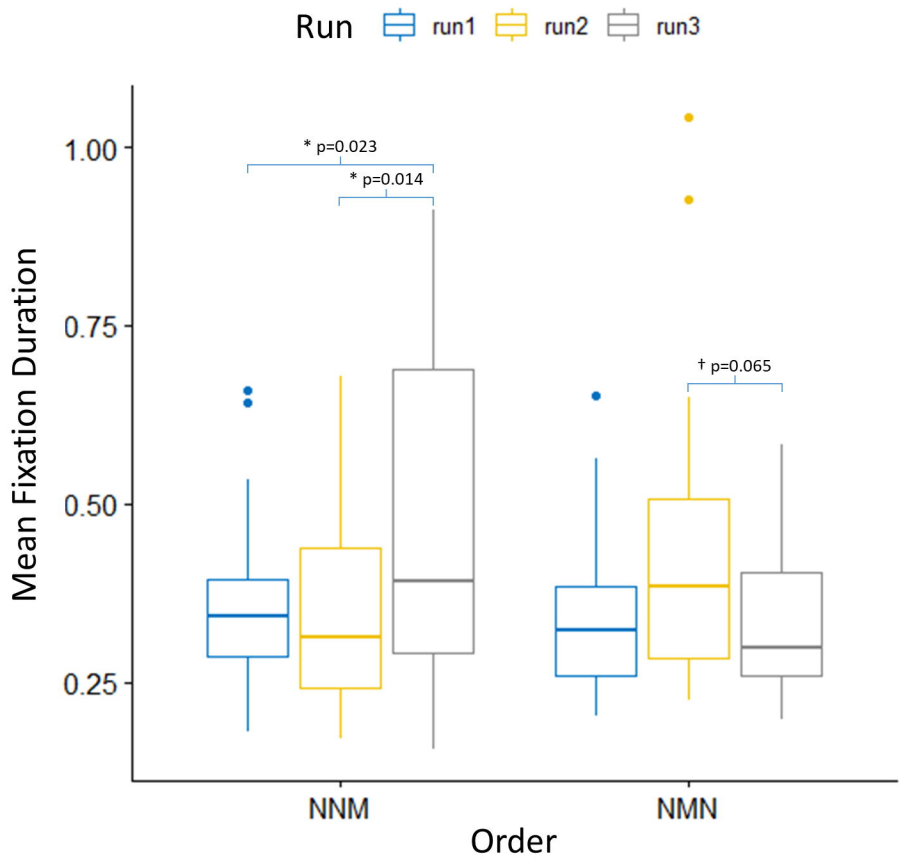
L

L Calcarine	(-8, -86, 6)
L IOG	(-42, -64, -12)
L FG	(-34, -48, -16)
L ITG	(-44, -50, -15)
L SOG	(-26, -73, 23)
L IPL	(-24, -52, 52)
L SPL	(-30, -46, 66)

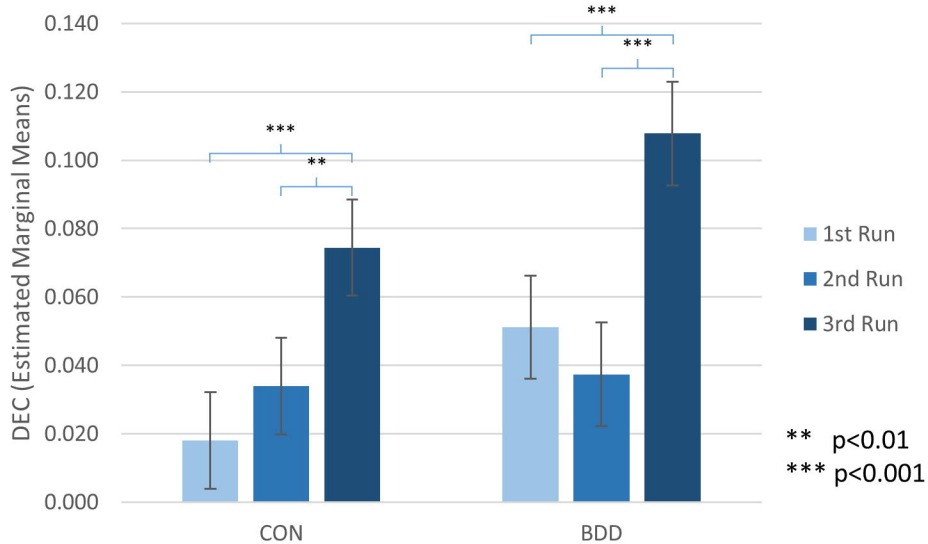
**R**

R Calcarine	(8, -86, 6)
R IOG	(40, -64, -12)
R FG	(40, -52, -16)
R ITG	(48, -60, -12)
R SOG	(23, -91, 26)
R IPL	(24, -48, 42)
R SPL	(20, -68, 62)

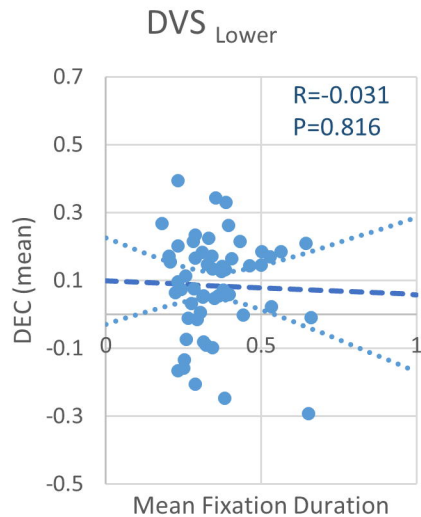




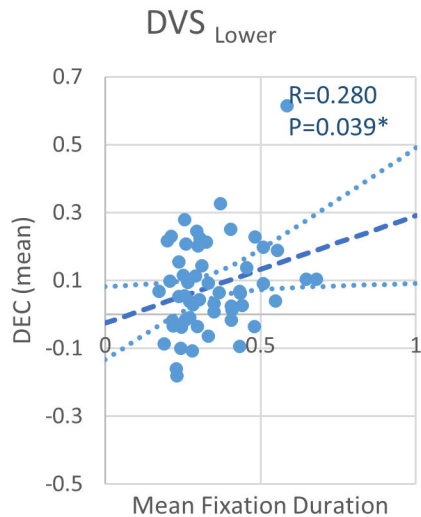
Dynamic effective connectivity in the dorsal visual stream (Calcarine to SOG) during face viewing



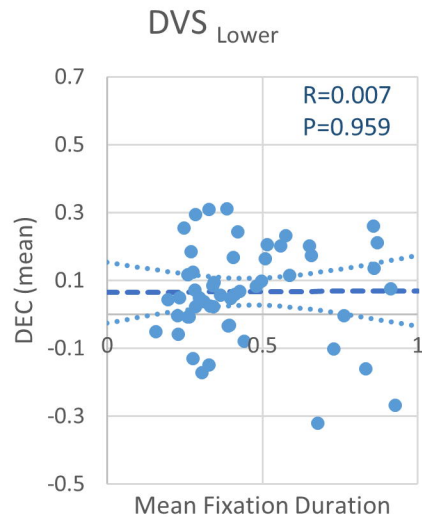
1st Natural Viewing



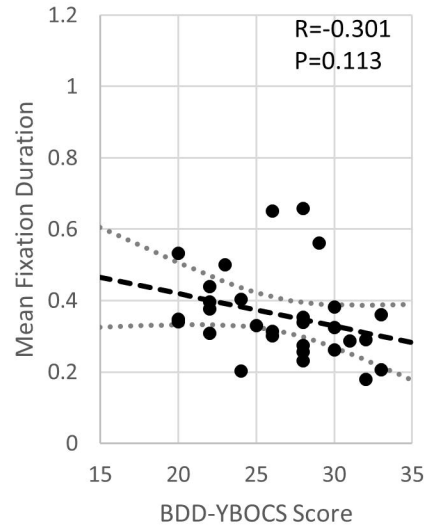
2nd Natural Viewing



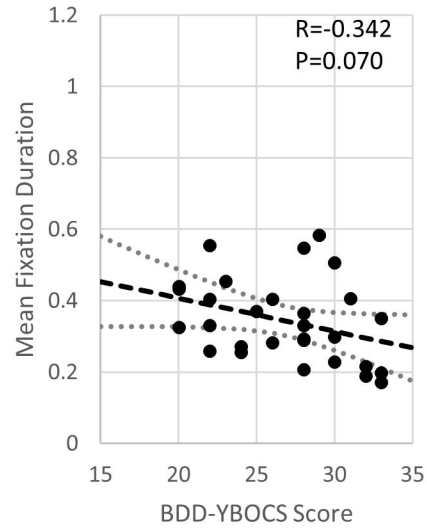
Modulated Viewing



1st Natural Viewing



2nd Natural Viewing



Modulated Viewing

