

Title: Excess Mortality in Suicide caused by COVID-19 in Japan

Junko Kurita<sup>1</sup>, Tamie Sugawara<sup>2</sup>, Yoshiyuki Sugishita<sup>2</sup>, Yasushi Ohkusa<sup>2</sup>

<sup>1</sup> Department of Nursing, Tokiwa University, Ibaraki, Japan

<sup>2</sup> Infectious Disease Surveillance Center, National Institute of Infectious Diseases,  
Shinjuku, Tokyo, Japan

\*<sup>1</sup> Correspondence to:

Infectious Disease Surveillance Center, National Institute of Infectious Diseases, 1-23-1

Toyama, Shinjuku-ku, Tokyo 162-8640, Japan

Tamie Sugawara [tammy@nih.go.jp](mailto:tammy@nih.go.jp)

### **ICMJE Statement**

Contributors TS was responsible for the organization and coordination of the study. JK was the chief investigator and responsible for the data setting. YO developed the estimation model and YS illustration the results. All authors contributed to the writing of the final manuscript.

Keywords: COVID-19; excess mortality; NIID model; stochastic frontier estimation; suicide

## **Abstract**

**Background:** Countermeasures against COVID-19 outbreak such as lockdown and voluntary restrictions against going out adversely affect human stress and economic activity. Particularly, this stress might lead to suicide.

**Object:** We examined excess mortality attributable to suicide caused by COVID-19.

**Method:** We applied the NIID model to suicide deaths from October 2009 through October, 2020 for the whole of Japan for both genders. Effects of the great earthquake that struck in eastern Japan on March 11, 2011 were incorporated into the estimation model.

**Results:** Significant excess mortality in suicide was found between July and October in 2020 for both genders. It was greater among females than among males. In total, 1599 excess cases of mortality were identified.

**Discussion and Conclusion:** Excess mortality during the four months was more than two times greater than the number of COVID-19 deaths confirmed by PCR testing.

Countermeasures against COVID-19 should be chosen carefully in light of suicide effects.

## **1. Introduction**

Since the emergence of COVID-19, excess mortality from all causes has been low in Japan [1]. Actually, data obtained throughout Japan show 12 and 104 cases of excess mortality in August and October, 2020. These very few cases of excess mortality in Japan might be attributable to the lower number of traffic accidents from voluntary restrictions against going out.

However, countermeasures against COVID-19 outbreak such as lockdowns or voluntary restrictions against going out can cause stress and can suppress economic activity. Countermeasures might lower incomes or cause job loss. Such economic stress might lead to suicide [2]. Such difficulties should be counted as part of the costs for countermeasures. Therefore, the present study examined excess mortality attributable to suicide caused by COVID-19.

## **2. Method**

The estimation procedure was almost identical to that used for an earlier study [1], except for some points. Excess mortality was defined as the difference between the actual number of deaths and an epidemiological threshold if the actual number of deaths exceeded an epidemiological threshold. The epidemiological threshold is defined as the upper bound of the 95% confidence interval (CI) of the baseline. The baseline is defined as the number of deaths that are likely to have occurred if an influenza outbreak had not occurred. Therefore, if the actual deaths were fewer than the epidemiological threshold, then excess mortality was not inferred. Additionally, we defined negative excess

mortality as the difference between the actual number of deaths and the lower bound of 95% CI if the actual deaths were fewer than the lower bound of 95% CI.

Data used for this study were those of monthly deaths from all causes, as reported from 2005 through October 2020 [3]. The NIID model, the Stochastic Frontier Estimation [4–10], is presented as

$$\log D_t = \alpha + \beta T_t + \gamma T_t^2 + \theta V_t + \lambda V_t T_t + \phi C_t + \xi C_t T_t + \sum \eta_i M_{it} + \varepsilon_t \quad (1)$$

and

$$\varepsilon_t = v_t + |\omega_t|, \quad (2)$$

where  $D_t$  represents suicide deaths in month/year  $t$ ,  $T_t$  denotes the linear time trend,  $V_t$  is a dummy variable for routine pneumococcal vaccination,  $C_t$  is a dummy variable for effect of the great earthquake in eastern Japan in March, 2011, and  $M_{it}$  is a dummy variable for the month. Also,  $V_t$  takes a value of one after October, 2014; otherwise, it is zero. Similarly,  $C_t$  takes a value of one in May, June, or July in 2011; otherwise, it is zero.  $M_{it}$  is one if  $t$  is the  $i$ -th month; otherwise, it is zero. Moreover,  $v_t$  and  $\omega_t$  are stochastic variables as  $v_t \sim N(0, \mu^2)$  and  $\omega_t \sim N(0, \xi^2)$ ; they are mutually independent.

Although  $v_t$  represents stochastic disturbances,  $\omega_t$  denotes non-negative deaths

attributable to influenza. These disturbance terms in this model are parameterized by two parameters:  $\xi/\mu$  and  $(\mu^2 + \xi^2)^{0.5}$ . If the null hypothesis  $\xi/\mu=0$  is not rejected, then the Stochastic Frontier Estimation model is inappropriate.

The study area encompassed the entire nation of Japan. The study period for estimation was October 2009 through October 2020 because of data availability. Suicide is defined as X60-X84 in ICD10. We adopted 5% as the level at which significance was inferred for results.

### 3. Results

Figure 1 presents observed suicide deaths, the estimated baseline, and its threshold for males. Figure 2 shows corresponding data for females. These figures showed that males are more numerous than females, but consistently decline is noted in the period for both genders. The sharpest spike occurred around May 2011, probably because of the great earthquake that struck eastern Japan on March 11, 2011. More than two months passed after the event before suicide increased. The second sharpest increase occurred probably in the latest period.

Because the estimated coefficients of the cross-term of routine vaccination initiation and time trend, earthquake dummy, and the cross-term of ICD10 revision and time trend were not found to be significant, we dropped these terms from the estimation equation (1). Table 1 presents estimation results without these variables. The estimated coefficients of the great earthquake in eastern Japan were 0.133 for males and 0.247 for

females. That result implies that the numbers of suicide deaths jumped respectively by 13% and 25% because of the earthquake. It is noteworthy that the effect on females was greater than on males, although the incidence of suicide death was much greater among males than among females.

Figure 3 presents excess mortality attributable to suicide in 2019 and 2020. Among females, clearly large excess mortality was found in the last three months. Among males, these were not greater than among females, but the two highest degrees of excess mortality were shown since 2019. In the three months, total excess mortality attributable to suicide was 810.

#### **4. Discussion**

This study applied the NIID model to suicide deaths to detect excess mortality attributable to COVID-19. Results showed that significant excess mortality attributable to suicide was found between July and October 2020, especially in October. It was estimated as 1599 for both genders. Especially, suicide in females was extremely high in October.

As described earlier, some excess mortality was found for August and October, 2020, respectively, as 12 and 104 cases. At least 12 cases of excess mortality among all causes in August might result from 304 cases of excess mortality attributable to suicide. At the same time, pneumonia deaths were recorded respectively as 178, 314, and 75

cases of negative excess mortality, in May, June, and July. Those figures were measured as the gap separating the observation and lower bound of 95% CI for baseline if the former was lower than the latter in May, June, and July [11]. In August, negative excess mortality attributable to pneumonia was not found, although the observation was below the baseline. Therefore, excess mortality attributable to suicide was cancelled out partially by negative excess mortality attributable to pneumonia. Therefore, no excess mortality was found for all causes of death. However, in August, negative excess mortality attributable to pneumonia was less than before. Therefore, excess mortality in suicide led to overall excess mortality for all causes, even though it was a very small number. In this sense, excess mortality attributable to suicide might be large in October, although data were not available because excess mortality from all causes was reported as a larger number than in August.

Throughout Japan, about 776 cases of mortality attributable to COVID-19 between July and October 2020, as confirmed by PCR testing, were reported to the Ministry of Health, Labour, and Welfare (MHLW) officially [1]. Therefore, excess mortality caused by suicide was more than two times greater than that reported for COVID-19 death. Pneumonia deaths sometimes lead to negative excess mortality. Therefore, the target of countermeasures for COVID-19 should reduce excess mortality attributable to suicide,

at least in Japan. In other words, economic activity should be less restricted if there are fewer infection opportunities.

Some researchers in Japan have emphasized considerable excess mortality from all causes of death through October of around 19 thousand at maximum due to COVID-19 [12] when using the Farrington algorithm [13] and EuroMOMO [14] , which was 11 times larger than the number of death confirmed by PCR test. This study measured excess mortality as the gap separating observations and baseline, not a threshold, as in prefectures where observations were higher than the threshold Therefore, their estimated too huge excess mortality might seriously mislead people into adopting greater risks of infection by COVID-19 among the general population.

The present study has some limitations. First, our results reflect data obtained through September, 2020 when the COVID-19 outbreak was not so widespread. Subsequently, and especially in winter, a severer COVID-19 outbreak occurred. The second state of emergency was declared on January 7, 2021. It required shortened business hours for restaurants. In the first state of emergency declaration in April and May, 2020, restaurants were required to shut down. Even though requirements of the second state of emergency were milder than the first, it might have increased suicide deaths several months after. Continuous monitoring is expected to be necessary.



Second, to ascertain the most appropriate countermeasures for COVID-19 in Japan, cost-effectiveness analysis is necessary. At that time, loss of quality of life in should be counted among the costs of restriction of economic activity as a major part of countermeasures. It remains as a subject for our next research challenge.

## **5. Conclusion**

The obtained results show excess mortality in suicide between July and October, 2020. Especially, suicide in female in October, 2020 was remarkable Continued careful monitoring of excess mortality attributable to suicide is expected to be necessary for evaluating countermeasures taken for the second state of emergency declaration.

The present study is based on the authors' opinions: it does not reflect any stance or policy of their professionally affiliated bodies.

## **6. Acknowledgement**

We acknowledge Dr. Nobuhiko Okabe, Kawasaki City Institute for Public Health, Dr.Kiyosu Taniguchi, National Hospital Organization Mie National Hospital, and Dr.Nahoko Shindo, WHO for their helpful support.

## 7. Conflict of interest

The authors have no conflict of interest to declare.

## 8. Ethical considerations

All information used for this study was published on the web site of MHLW [12].

Therefore, no ethical issue is presented.

## 9. References

- 1) Kurita J, Sugawara T, Sugishita Y, Ohkusa Y. Few Excess Mortality in Japan in August and October, 2020 since January, 2020. <https://www.medrxiv.org/content/10.1101/2020.07.09.20143164v9.article-info>
- 2) Japan times. Pandemic raises Japan suicide rate after decade of decline. <https://www.japantimes.co.jp/news/2021/01/22/national/japan-suicide-rate/> [accessed on February 3, 2021]
- 3) Ministry of Health, Labour and Welfare. Effect of revision in ICD10 to mortality statistics. [https://www.mhlw.go.jp/toukei/list/dl/icd\\_2013\\_eikyo.pdf](https://www.mhlw.go.jp/toukei/list/dl/icd_2013_eikyo.pdf) (in Japanese) [accessed on December 26, 2020]
- 4) Ministry of Health, Labour and Welfare. Preliminary statistics on demographics <https://www.mhlw.go.jp/toukei/list/81-1a.html> (in Japanese)

[accessed on December 26, 2020]

- 5) Aiger AD, Lovell K, Schmitdt P. Formulation and estimation of stochastic frontier production function models. *Journal of Econometrics* 1977; 21-37.
- 6) Jondrow J, Lovell K, Materov S, Schmidt P. On the estimation of technical inefficiency in the stochastic frontier production function model. *Journal of Econometrics* 1982; 233-9.
- 7) Li T, Rosenman R. Cost inefficiency in Washington Hospitals: A stochastic frontier approach using panel data, *Health Care Management Science* 2001; 4: 73-81.
- 8) Newhouse JP. Frontier Estimation: How useful a tool for health economics? *Journal of Health Economics* 1994; 13: 317-22.
- 9) Shelton Brown H. Managed care and technical efficiency. *Health Economics*. 2003; 12: 149-58.
- 10) Jacobs R. Alternative methods to examine hospital efficiency: Data envelopment analysis and stochastic frontier analysis. *Health Care Management Science*. 2001; 4: 103-15
- 11) Kurita J, Sugawara T, Sugishita Y, Ohkusa Y. Negative Excess Mortality in Pneumonia Death caused by COVID-19 in Japan.

<https://www.medrxiv.org/content/10.1101/2021.01.22.21250283v1>

doi:

<https://doi.org/10.1101/2021.01.22.21250283>

- 12) National Institute of Infectious Diseases, Excess mortality in Japan, on October 2020.

<https://www.niid.go.jp/niid/ja/from-idsc/493-guidelines/10150-excess-mortality-2>

1jan.html (in Japanese) [accessed on February 5, 2021]

- 13) Center of Disease Control and Prevention, Excess Deaths Associated with COVID-19

<https://data.cdc.gov/NCHS/Excess-Deaths-Associated-with-COVID-19/xkkf-xrst> [accessed on February 5, 2021]

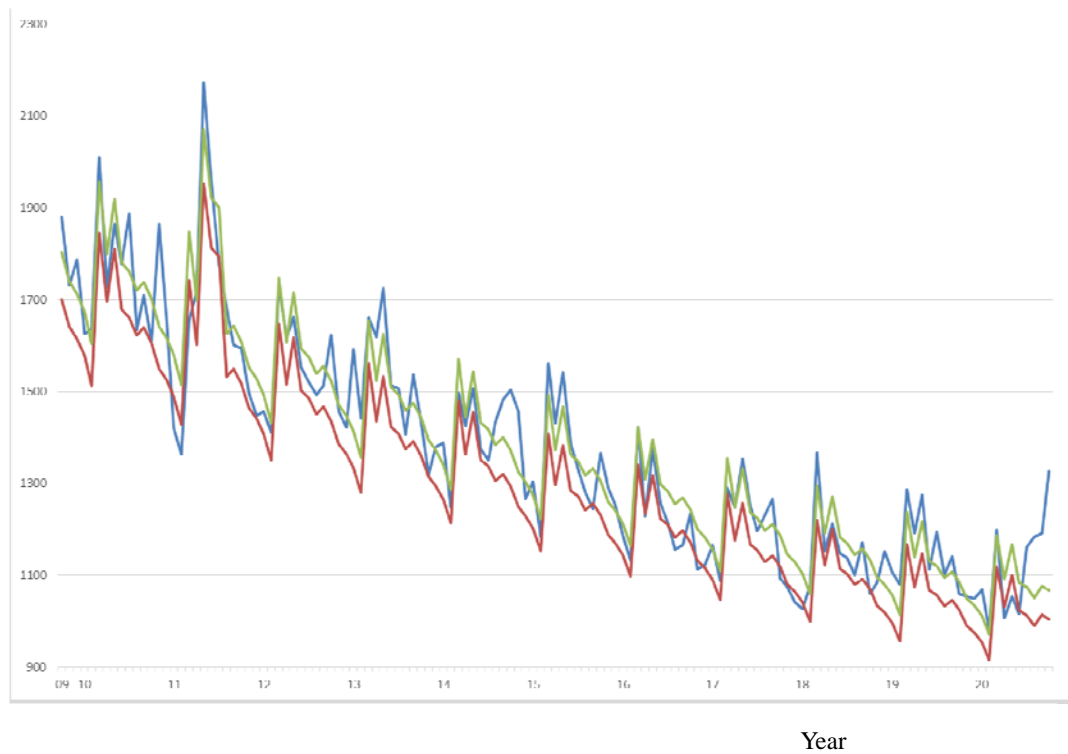
- 14) EUROMOMO,EUROMOMO, <https://www.euromomo.eu/> [accessed on February 5, 2021, 2020]

Table 1 NIID Model estimation results for suicide by gender from October, 2009 through September, 2020 in Japan

Explanatory variable	Male		Female	
	Estimated coefficient	<i>p</i> -value	Estimated coefficient	<i>p</i> -value
Constant	7.4022	<0.0004	6.4390	<0.0004
Time trend	-0.004910	<0.0004	-0.002571	0.001
Time trend <sup>2</sup>	0.00005637	0.114	0.000009346	0.094
Earthquake	0.1327	<0.0004	0.2474	<0.0004
January	-0.01859	0.377	0.0002747	0.993
February	-0.05574	0.008	-0.005012	0.140
March	0.1476	<0.0004	0.1208	<0.0004
April	0.06879	0.002	0.08281	0.002
May	0.1383	<0.0004	0.1605	<0.0004
June	0.06852	0.016	0.1104	0.001
July	0.06223	0.011	0.1319	<0.0004
August	0.04302	0.046	0.1105	<0.0004
September	0.05874	0.006	0.09846	0.002
October	0.04187	0.040	0.06022	0.025
November	0.01112	0.596	0.06072	0.026
$\xi/\mu$	2.079	<0.0004	2.068	<0.0004
$(\mu^2 + \xi^2)^{0.5}$	0.007422	<0.0004	0.1010	<0.0004
log likelihood	238.695		187.446	

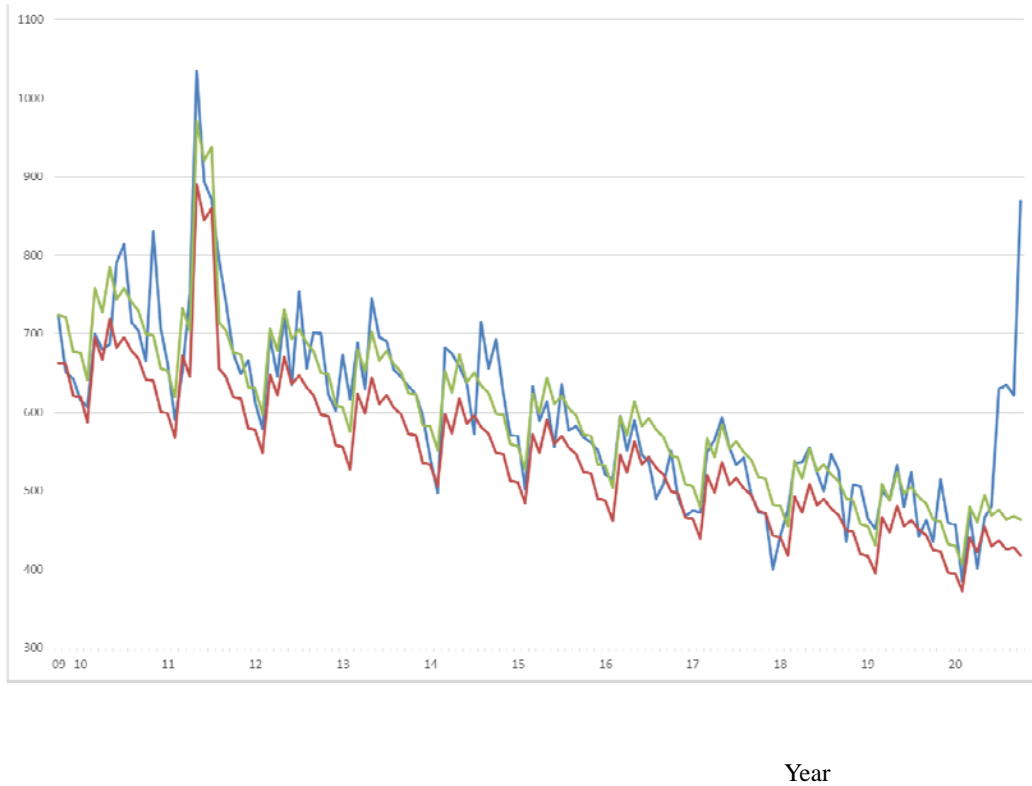
Note: Observations were 131.  $\xi^2$  denotes the variance of the non-negative disturbance term.  $\mu^2$  represents the variance of the disturbance term. “Earthquake” is a dummy variable for May–July, 2011, which was inferred to be caused by the great earthquake in eastern Japan occurred March 11, 2011.

Figure 1: Observations of the estimated baseline and threshold for suicide deaths from October 2009 through September 2020 among males.  
(persons)



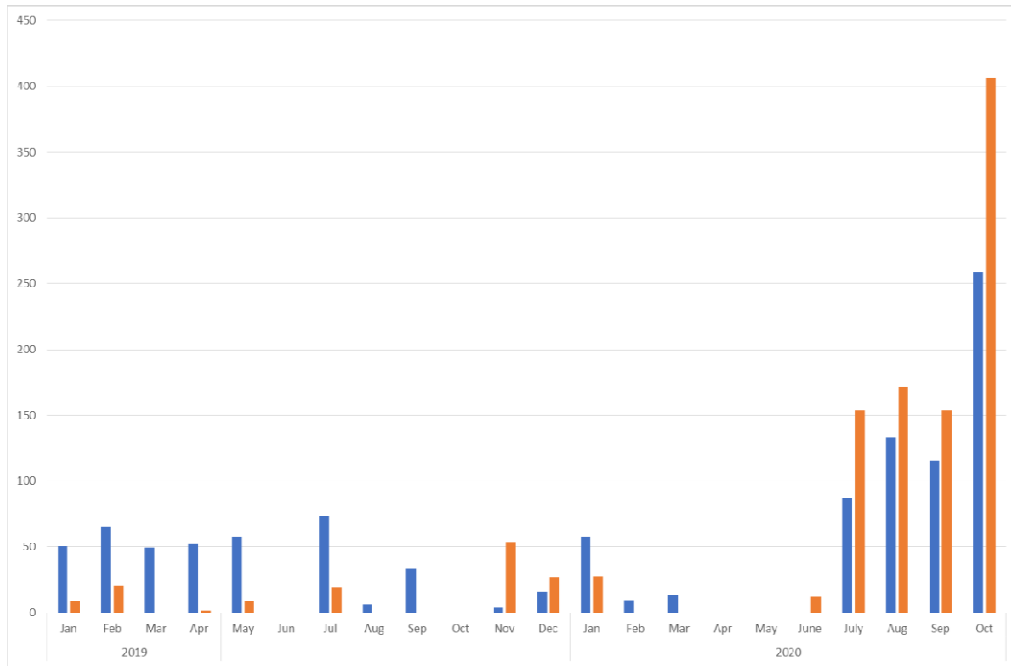
Note: The blue line represents observations. The red line represents the estimated baseline. The green line shows its threshold.

Figure 2: Observations of the estimated baseline and threshold for suicide from October 2009 through September 2020 among females.  
(persons)



Note: The blue line represents observations. The red line represents the estimated baseline. The green line shows its threshold.

Figure 3: Excess mortality in suicide by gender since 2019 by month in Japan.



Note: The blue bars represents excess mortality in suicide among males. Orange bars indicate that among females.